



## Full wwPDB EM Validation Report ⓘ

Nov 2, 2024 – 10:41 PM EDT

PDB ID : 6X9S  
EMDB ID : EMD-22109  
Title : HIV-1 Envelope Glycoprotein BG505 SOSIP.664 expressed in stable CHO cells  
in complex with RM20A3 Fab  
Authors : Berndsen, Z.T.; Ward, A.B.  
Deposited on : 2020-06-03  
Resolution : 3.10 Å(reported)

This is a Full wwPDB EM Validation Report for a publicly released PDB entry.

We welcome your comments at [validation@mail.wwpdb.org](mailto:validation@mail.wwpdb.org)

A user guide is available at

<https://www.wwpdb.org/validation/2017/EMValidationReportHelp>

with specific help available everywhere you see the ⓘ symbol.

The types of validation reports are described at

<http://www.wwpdb.org/validation/2017/FAQs#types>.

---

The following versions of software and data (see [references ⓘ](#)) were used in the production of this report:

EMDB validation analysis : 0.0.1.dev113  
Mogul : 2022.3.0, CSD as543be (2022)  
MolProbity : 4.02b-467  
Percentile statistics : 20231227.v01 (using entries in the PDB archive December 27th 2023)  
MapQ : 1.9.13  
Ideal geometry (proteins) : Engh & Huber (2001)  
Ideal geometry (DNA, RNA) : Parkinson et al. (1996)  
Validation Pipeline (wwPDB-VP) : 2.39

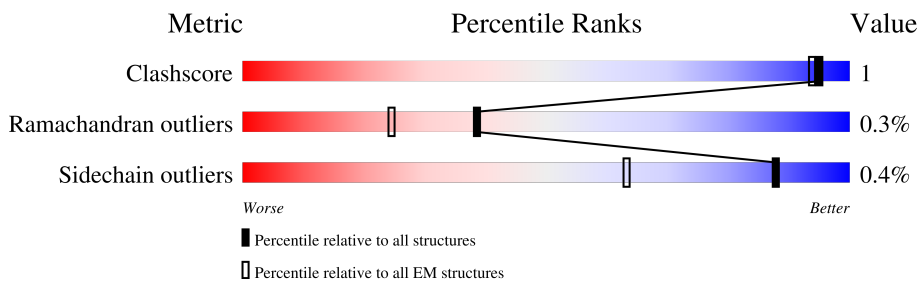
# 1 Overall quality at a glance i

The following experimental techniques were used to determine the structure:

*ELECTRON MICROSCOPY*

The reported resolution of this entry is 3.10 Å.

Percentile scores (ranging between 0-100) for global validation metrics of the entry are shown in the following graphic. The table shows the number of entries on which the scores are based.



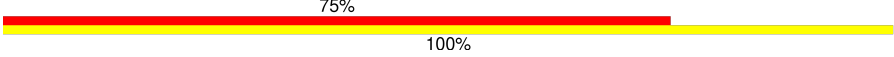
Metric	Whole archive (#Entries)	EM structures (#Entries)
Clashscore	210492	15764
Ramachandran outliers	207382	16835
Sidechain outliers	206894	16415

The table below summarises the geometric issues observed across the polymeric chains and their fit to the map. The red, orange, yellow and green segments of the bar indicate the fraction of residues that contain outliers for  $\geq 3$ , 2, 1 and 0 types of geometric quality criteria respectively. A grey segment represents the fraction of residues that are not modelled. The numeric value for each fraction is indicated below the corresponding segment, with a dot representing fractions  $\leq 5\%$ . The upper red bar (where present) indicates the fraction of residues that have poor fit to the EM map (all-atom inclusion  $< 40\%$ ). The numeric value is given above the bar.

Mol	Chain	Length	Quality of chain
1	A	516	
2	B	153	
3	H	125	
4	L	128	
5	C	2	
5	D	2	
5	F	2	
5	G	2	

Continued on next page...

*Continued from previous page...*

Mol	Chain	Length	Quality of chain
6	E	4	 A horizontal bar chart showing the quality of chain. The bar is divided into two segments: a red segment on the left and a yellow segment on the right. The red segment extends to the 75% mark, and the yellow segment extends to the 100% mark. The text '75%' is positioned above the red segment, and '100%' is positioned below the yellow segment.

## 2 Entry composition

There are 7 unique types of molecules in this entry. The entry contains 6530 atoms, of which 0 are hydrogens and 0 are deuteriums.

In the tables below, the AltConf column contains the number of residues with at least one atom in alternate conformation and the Trace column contains the number of residues modelled with at most 2 atoms.

- Molecule 1 is a protein called HIV-1 Envelope Glycoprotein BG505 SOSIP.664 gp120.

Mol	Chain	Residues	Atoms					AltConf	Trace
			Total	C	N	O	S		
1	A	432	3405	2142	600	635	28	0	0

There are 42 discrepancies between the modelled and reference sequences:

Chain	Residue	Modelled	Actual	Comment	Reference
A	-4	MET	-	expression tag	UNP Q2N0S6
A	-3	ASP	-	expression tag	UNP Q2N0S6
A	-2	ALA	-	expression tag	UNP Q2N0S6
A	-1	MET	-	expression tag	UNP Q2N0S6
A	0	LYS	-	expression tag	UNP Q2N0S6
A	1	ARG	-	expression tag	UNP Q2N0S6
A	2	GLY	-	expression tag	UNP Q2N0S6
A	3	LEU	-	expression tag	UNP Q2N0S6
A	4	CYS	-	expression tag	UNP Q2N0S6
A	5	CYS	-	expression tag	UNP Q2N0S6
A	6	VAL	-	expression tag	UNP Q2N0S6
A	7	LEU	-	expression tag	UNP Q2N0S6
A	8	LEU	-	expression tag	UNP Q2N0S6
A	9	LEU	-	expression tag	UNP Q2N0S6
A	10	CYS	-	expression tag	UNP Q2N0S6
A	11	GLY	-	expression tag	UNP Q2N0S6
A	12	ALA	-	expression tag	UNP Q2N0S6
A	13	VAL	-	expression tag	UNP Q2N0S6
A	14	PHE	-	expression tag	UNP Q2N0S6
A	15	VAL	-	expression tag	UNP Q2N0S6
A	16	SER	-	expression tag	UNP Q2N0S6
A	17	PRO	-	expression tag	UNP Q2N0S6
A	18	SER	-	expression tag	UNP Q2N0S6
A	19	GLN	-	expression tag	UNP Q2N0S6
A	20	GLU	-	expression tag	UNP Q2N0S6
A	21	ILE	-	expression tag	UNP Q2N0S6
A	22	HIS	-	expression tag	UNP Q2N0S6
A	23	ALA	-	expression tag	UNP Q2N0S6

*Continued on next page...*

Continued from previous page...

Chain	Residue	Modelled	Actual	Comment	Reference
A	24	ARG	-	expression tag	UNP Q2N0S6
A	25	PHE	-	expression tag	UNP Q2N0S6
A	26	ARG	-	expression tag	UNP Q2N0S6
A	27	ARG	-	expression tag	UNP Q2N0S6
A	28	GLY	-	expression tag	UNP Q2N0S6
A	29	ALA	-	expression tag	UNP Q2N0S6
A	30	ARG	-	expression tag	UNP Q2N0S6
A	332	ASN	THR	engineered mutation	UNP Q2N0S6
A	501	CYS	ALA	engineered mutation	UNP Q2N0S6
A	509	ARG	-	expression tag	UNP Q2N0S6
A	510	ARG	-	expression tag	UNP Q2N0S6
A	511	ARG	-	expression tag	UNP Q2N0S6
A	512	ARG	-	expression tag	UNP Q2N0S6
A	513	ARG	-	expression tag	UNP Q2N0S6

- Molecule 2 is a protein called HIV-1 Envelope Glycoprotein BG505 SOSIP.664 gp41.

Mol	Chain	Residues	Atoms					AltConf	Trace
			Total	C	N	O	S		
2	B	121	971	616	167	182	6	0	0

There are 2 discrepancies between the modelled and reference sequences:

Chain	Residue	Modelled	Actual	Comment	Reference
B	559	PRO	ILE	engineered mutation	UNP Q2N0S6
B	605	CYS	THR	engineered mutation	UNP Q2N0S6

- Molecule 3 is a protein called RM20A3 Fab Heavy Chain.

Mol	Chain	Residues	Atoms					AltConf	Trace
			Total	C	N	O	S		
3	H	124	943	595	161	182	5	0	0

- Molecule 4 is a protein called RM20A3 Fab Light Chain.

Mol	Chain	Residues	Atoms					AltConf	Trace
			Total	C	N	O	S		
4	L	109	811	505	136	167	3	0	0

- Molecule 5 is an oligosaccharide called 2-acetamido-2-deoxy-beta-D-glucopyranose-(1-4)-2-acetamido-2-deoxy-beta-D-glucopyranose.



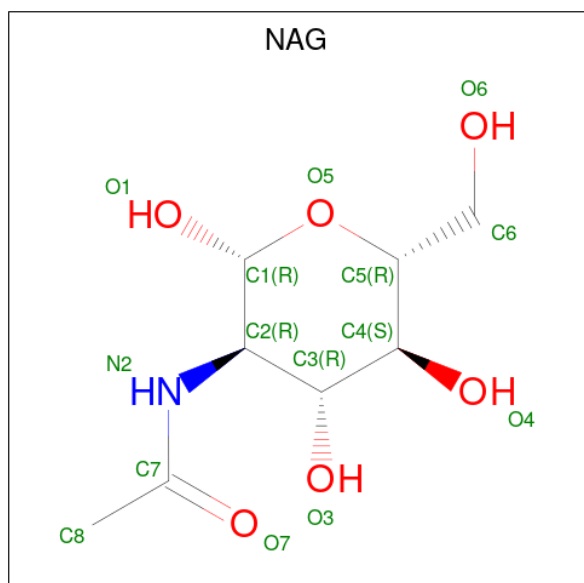
Mol	Chain	Residues	Atoms				AltConf	Trace
			Total	C	N	O		
5	C	2	28	16	2	10	0	0
5	D	2	28	16	2	10	0	0
5	F	2	28	16	2	10	0	0
5	G	2	28	16	2	10	0	0

- Molecule 6 is an oligosaccharide called alpha-D-mannopyranose-(1-3)-beta-D-mannopyranos e-(1-4)-2-acetamido-2-deoxy-beta-D-glucopyranose-(1-4)-2-acetamido-2-deoxy-beta-D-glucopyranose.



Mol	Chain	Residues	Atoms				AltConf	Trace
			Total	C	N	O		
6	E	4	50	28	2	20	0	0

- Molecule 7 is 2-acetamido-2-deoxy-beta-D-glucopyranose (three-letter code: NAG) (formula: C<sub>8</sub>H<sub>15</sub>NO<sub>6</sub>).

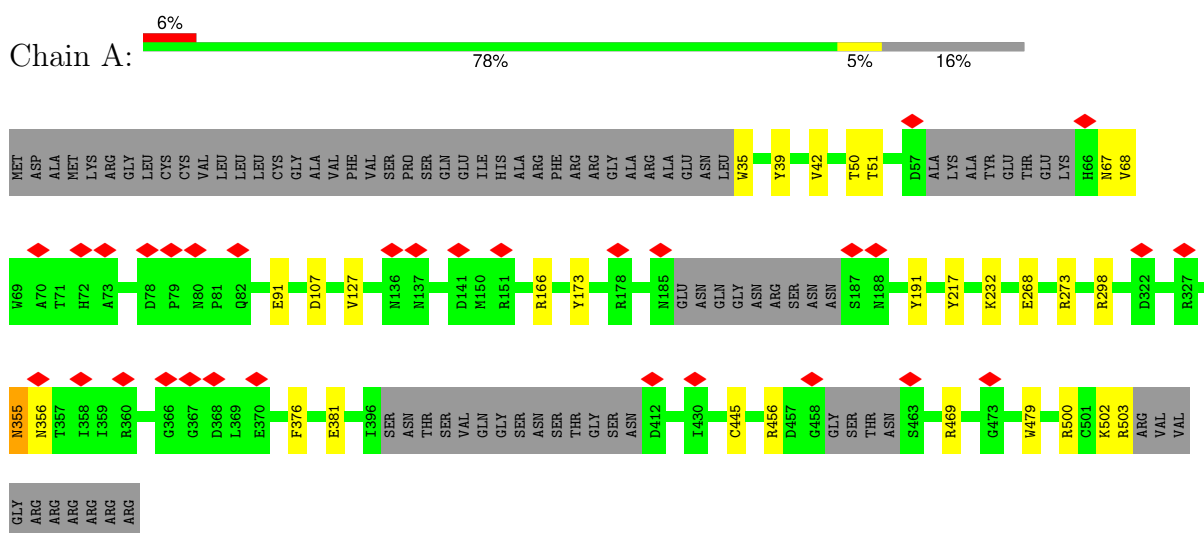


Mol	Chain	Residues	Atoms				AltConf
7	A	1	Total	C	N	O	0
			14	8	1	5	
7	A	1	Total	C	N	O	0
			14	8	1	5	
7	A	1	Total	C	N	O	0
			14	8	1	5	
7	A	1	Total	C	N	O	0
			14	8	1	5	
7	A	1	Total	C	N	O	0
			14	8	1	5	
7	A	1	Total	C	N	O	0
			14	8	1	5	
7	A	1	Total	C	N	O	0
			14	8	1	5	
7	A	1	Total	C	N	O	0
			14	8	1	5	
7	A	1	Total	C	N	O	0
			14	8	1	5	
7	A	1	Total	C	N	O	0
			14	8	1	5	
7	A	1	Total	C	N	O	0
			14	8	1	5	
7	B	1	Total	C	N	O	0
			14	8	1	5	
7	B	1	Total	C	N	O	0
			14	8	1	5	
7	B	1	Total	C	N	O	0
			14	8	1	5	
7	B	1	Total	C	N	O	0
			14	8	1	5	

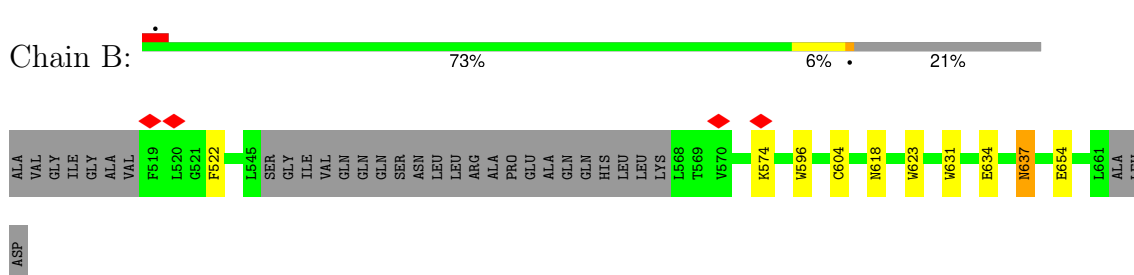
### 3 Residue-property plots [i](#)

These plots are drawn for all protein, RNA, DNA and oligosaccharide chains in the entry. The first graphic for a chain summarises the proportions of the various outlier classes displayed in the second graphic. The second graphic shows the sequence view annotated by issues in geometry and atom inclusion in map density. Residues are color-coded according to the number of geometric quality criteria for which they contain at least one outlier: green = 0, yellow = 1, orange = 2 and red = 3 or more. A red diamond above a residue indicates a poor fit to the EM map for this residue (all-atom inclusion < 40%). Stretches of 2 or more consecutive residues without any outlier are shown as a green connector. Residues present in the sample, but not in the model, are shown in grey.

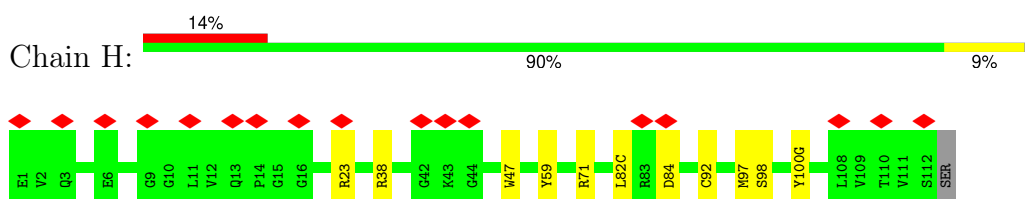
- Molecule 1: HIV-1 Envelope Glycoprotein BG505 SOSIP.664 gp120



- Molecule 2: HIV-1 Envelope Glycoprotein BG505 SOSIP.664 gp41

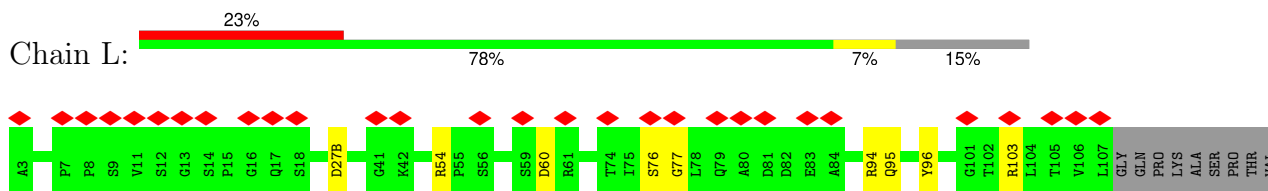


- Molecule 3: RM20A3 Fab Heavy Chain



- Molecule 4: RM20A3 Fab Light Chain





THR  
LEU  
PHE  
PRO  
PRO  
SER  
SER  
SER  
GLU  
LEU

- Molecule 5: 2-acetamido-2-deoxy-beta-D-glucopyranose-(1-4)-2-acetamido-2-deoxy-beta-D-glucopyranose



MAG1  
MAG2

- Molecule 5: 2-acetamido-2-deoxy-beta-D-glucopyranose-(1-4)-2-acetamido-2-deoxy-beta-D-glucopyranose



MAG1  
MAG2

- Molecule 5: 2-acetamido-2-deoxy-beta-D-glucopyranose-(1-4)-2-acetamido-2-deoxy-beta-D-glucopyranose



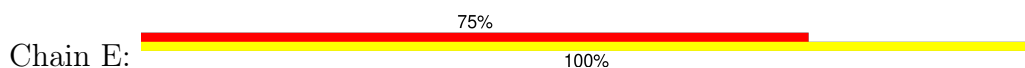
MAG1  
MAG2

- Molecule 5: 2-acetamido-2-deoxy-beta-D-glucopyranose-(1-4)-2-acetamido-2-deoxy-beta-D-glucopyranose



MAG1  
MAG2

- Molecule 6: alpha-D-mannopyranose-(1-3)-beta-D-mannopyranose-(1-4)-2-acetamido-2-deoxy-beta-D-glucopyranose-(1-4)-2-acetamido-2-deoxy-beta-D-glucopyranose





## 4 Experimental information

Property	Value	Source
EM reconstruction method	SINGLE PARTICLE	Depositor
Imposed symmetry	POINT, C3	Depositor
Number of particles used	67028	Depositor
Resolution determination method	FSC 0.143 CUT-OFF	Depositor
CTF correction method	PHASE FLIPPING AND AMPLITUDE CORRECTION	Depositor
Microscope	FEI TITAN KRIOS	Depositor
Voltage (kV)	300	Depositor
Electron dose ( $e^-/\text{\AA}^2$ )	50	Depositor
Minimum defocus (nm)	Not provided	
Maximum defocus (nm)	Not provided	
Magnification	Not provided	
Image detector	GATAN K2 SUMMIT (4k x 4k)	Depositor
Maximum map value	0.218	Depositor
Minimum map value	-0.128	Depositor
Average map value	0.000	Depositor
Map value standard deviation	0.007	Depositor
Recommended contour level	0.04	Depositor
Map size (Å)	288.4, 288.4, 288.4	wwPDB
Map dimensions	280, 280, 280	wwPDB
Map angles (°)	90.0, 90.0, 90.0	wwPDB
Pixel spacing (Å)	1.03, 1.03, 1.03	Depositor

## 5 Model quality [i](#)

### 5.1 Standard geometry [i](#)

Bond lengths and bond angles in the following residue types are not validated in this section: MAN, NAG, BMA

The Z score for a bond length (or angle) is the number of standard deviations the observed value is removed from the expected value. A bond length (or angle) with  $|Z| > 5$  is considered an outlier worth inspection. RMSZ is the root-mean-square of all Z scores of the bond lengths (or angles).

Mol	Chain	Bond lengths		Bond angles	
		RMSZ	# Z  >5	RMSZ	# Z  >5
1	A	1.20	12/3476 (0.3%)	0.91	11/4718 (0.2%)
2	B	1.38	9/989 (0.9%)	0.80	0/1341
3	H	1.31	7/963 (0.7%)	0.97	2/1300 (0.2%)
4	L	1.13	1/830 (0.1%)	0.97	2/1129 (0.2%)
All	All	1.24	29/6258 (0.5%)	0.91	15/8488 (0.2%)

All (29) bond length outliers are listed below:

Mol	Chain	Res	Type	Atoms	Z	Observed(Å)	Ideal(Å)
3	H	100(G)	TYR	CG-CD1	-7.91	1.28	1.39
1	A	42	VAL	CB-CG1	-6.34	1.39	1.52
2	B	634	GLU	CD-OE1	-6.25	1.18	1.25
2	B	522	PHE	CB-CG	-6.21	1.40	1.51
3	H	100(G)	TYR	CD1-CE1	-6.05	1.30	1.39
1	A	91	GLU	CD-OE1	-5.92	1.19	1.25
3	H	71	ARG	CD-NE	-5.87	1.36	1.46
2	B	604	CYS	CB-SG	-5.77	1.72	1.81
2	B	596	TRP	CZ3-CH2	-5.76	1.30	1.40
4	L	96	TYR	CB-CG	-5.72	1.43	1.51
1	A	500	ARG	CZ-NH2	-5.65	1.25	1.33
2	B	631	TRP	CD2-CE2	-5.64	1.34	1.41
2	B	596	TRP	CD2-CE2	-5.57	1.34	1.41
1	A	39	TYR	CE2-CZ	-5.55	1.31	1.38
1	A	191	TYR	CG-CD1	-5.54	1.31	1.39
1	A	127	VAL	CB-CG1	-5.51	1.41	1.52
2	B	623	TRP	NE1-CE2	-5.48	1.30	1.37
2	B	623	TRP	CZ3-CH2	-5.43	1.31	1.40
1	A	445	CYS	CB-SG	-5.43	1.73	1.81
3	H	38	ARG	CB-CG	-5.40	1.38	1.52
3	H	92	CYS	CB-SG	-5.28	1.73	1.81
1	A	35	TRP	CZ3-CH2	-5.28	1.31	1.40

*Continued on next page...*

Continued from previous page...

Mol	Chain	Res	Type	Atoms	Z	Observed(Å)	Ideal(Å)
1	A	376	PHE	CB-CG	-5.28	1.42	1.51
3	H	47	TRP	CD2-CE2	-5.24	1.35	1.41
2	B	654	GLU	CD-OE1	-5.13	1.20	1.25
3	H	59	TYR	CB-CG	-5.13	1.44	1.51
1	A	479	TRP	CE2-CZ2	-5.11	1.31	1.39
1	A	91	GLU	CD-OE2	-5.08	1.20	1.25
1	A	381	GLU	CD-OE1	-5.01	1.20	1.25

All (15) bond angle outliers are listed below:

Mol	Chain	Res	Type	Atoms	Z	Observed(°)	Ideal(°)
1	A	166	ARG	NE-CZ-NH2	-10.82	114.89	120.30
1	A	469	ARG	NE-CZ-NH2	-8.97	115.81	120.30
4	L	54	ARG	NE-CZ-NH2	-7.86	116.37	120.30
1	A	217	TYR	CB-CG-CD1	-6.99	116.81	121.00
1	A	273	ARG	NE-CZ-NH2	-6.29	117.16	120.30
1	A	173	TYR	CB-CG-CD2	-6.22	117.27	121.00
1	A	500	ARG	NE-CZ-NH2	-6.13	117.24	120.30
1	A	298	ARG	NE-CZ-NH2	-6.01	117.29	120.30
1	A	469	ARG	NE-CZ-NH1	5.80	123.20	120.30
1	A	166	ARG	NE-CZ-NH1	5.79	123.20	120.30
1	A	456	ARG	NE-CZ-NH2	-5.72	117.44	120.30
3	H	23	ARG	NE-CZ-NH1	5.54	123.07	120.30
4	L	103	ARG	NE-CZ-NH2	-5.52	117.54	120.30
1	A	500	ARG	NE-CZ-NH1	5.31	122.95	120.30
3	H	100(G)	TYR	CB-CG-CD1	-5.16	117.90	121.00

There are no chirality outliers.

There are no planarity outliers.

## 5.2 Too-close contacts [\(i\)](#)

In the following table, the Non-H and H(model) columns list the number of non-hydrogen atoms and hydrogen atoms in the chain respectively. The H(added) column lists the number of hydrogen atoms added and optimized by MolProbity. The Clashes column lists the number of clashes within the asymmetric unit, whereas Symm-Clashes lists symmetry-related clashes.

Mol	Chain	Non-H	H(model)	H(added)	Clashes	Symm-Clashes
1	A	3405	0	3343	7	0
2	B	971	0	948	2	0
3	H	943	0	915	2	0

Continued on next page...

Continued from previous page...

Mol	Chain	Non-H	H(model)	H(added)	Clashes	Symm-Clashes
4	L	811	0	767	3	0
5	C	28	0	25	0	0
5	D	28	0	25	0	0
5	F	28	0	25	0	0
5	G	28	0	25	0	0
6	E	50	0	41	0	0
7	A	182	0	169	0	0
7	B	56	0	52	0	0
All	All	6530	0	6335	13	0

The all-atom clashscore is defined as the number of clashes found per 1000 atoms (including hydrogen atoms). The all-atom clashscore for this structure is 1.

All (13) close contacts within the same asymmetric unit are listed below, sorted by their clash magnitude.

Atom-1	Atom-2	Interatomic distance (Å)	Clash overlap (Å)
1:A:355:ASN:OD1	1:A:355:ASN:N	2.33	0.60
3:H:84:ASP:OD1	3:H:84:ASP:N	2.34	0.59
2:B:637:ASN:OD1	2:B:637:ASN:N	2.43	0.51
1:A:232:LYS:NZ	1:A:268:GLU:OE1	2.45	0.49
1:A:502:LYS:O	1:A:503:ARG:C	2.50	0.48
4:L:76:SER:OG	4:L:77:GLY:N	2.47	0.47
3:H:97:MET:HG2	3:H:98:SER:H	1.81	0.46
1:A:356:ASN:OD1	1:A:356:ASN:N	2.47	0.46
1:A:107:ASP:OD1	2:B:574:LYS:NZ	2.49	0.46
4:L:94:ARG:O	4:L:95:GLN:HB2	2.19	0.42
1:A:67:ASN:OD1	1:A:68:VAL:N	2.52	0.42
4:L:60:ASP:N	4:L:60:ASP:OD1	2.44	0.41
1:A:50:THR:OG1	1:A:51:THR:N	2.54	0.41

There are no symmetry-related clashes.

## 5.3 Torsion angles [i](#)

### 5.3.1 Protein backbone [i](#)

In the following table, the Percentiles column shows the percent Ramachandran outliers of the chain as a percentile score with respect to all PDB entries followed by that with respect to all EM entries.

The Analysed column shows the number of residues for which the backbone conformation was analysed, and the total number of residues.

Mol	Chain	Analysed	Favoured	Allowed	Outliers	Percentiles	
1	A	422/516 (82%)	410 (97%)	12 (3%)	0	100	100
2	B	117/153 (76%)	115 (98%)	2 (2%)	0	100	100
3	H	122/125 (98%)	115 (94%)	6 (5%)	1 (1%)	16	48
4	L	107/128 (84%)	98 (92%)	8 (8%)	1 (1%)	14	45
All	All	768/922 (83%)	738 (96%)	28 (4%)	2 (0%)	38	68

All (2) Ramachandran outliers are listed below:

Mol	Chain	Res	Type
3	H	82(C)	LEU
4	L	27(B)	ASP

### 5.3.2 Protein sidechains [i](#)

In the following table, the Percentiles column shows the percent sidechain outliers of the chain as a percentile score with respect to all PDB entries followed by that with respect to all EM entries.

The Analysed column shows the number of residues for which the sidechain conformation was analysed, and the total number of residues.

Mol	Chain	Analysed	Rotameric	Outliers	Percentiles	
1	A	387/456 (85%)	386 (100%)	1 (0%)	91	95
2	B	105/129 (81%)	103 (98%)	2 (2%)	52	75
3	H	101/102 (99%)	101 (100%)	0	100	100
4	L	89/106 (84%)	89 (100%)	0	100	100
All	All	682/793 (86%)	679 (100%)	3 (0%)	88	94

All (3) residues with a non-rotameric sidechain are listed below:

Mol	Chain	Res	Type
1	A	355	ASN
2	B	618	ASN
2	B	637	ASN

Sometimes sidechains can be flipped to improve hydrogen bonding and reduce clashes. There are no such sidechains identified.

### 5.3.3 RNA [i](#)

There are no RNA molecules in this entry.

## 5.4 Non-standard residues in protein, DNA, RNA chains [i](#)

There are no non-standard protein/DNA/RNA residues in this entry.

## 5.5 Carbohydrates [i](#)

12 monosaccharides are modelled in this entry.

In the following table, the Counts columns list the number of bonds (or angles) for which Mogul statistics could be retrieved, the number of bonds (or angles) that are observed in the model and the number of bonds (or angles) that are defined in the Chemical Component Dictionary. The Link column lists molecule types, if any, to which the group is linked. The Z score for a bond length (or angle) is the number of standard deviations the observed value is removed from the expected value. A bond length (or angle) with  $|Z| > 2$  is considered an outlier worth inspection. RMSZ is the root-mean-square of all Z scores of the bond lengths (or angles).

Mol	Type	Chain	Res	Link	Bond lengths			Bond angles		
					Counts	RMSZ	# Z  > 2	Counts	RMSZ	# Z  > 2
5	NAG	C	1	1,5	14,14,15	1.97	2 (14%)	17,19,21	1.07	2 (11%)
5	NAG	C	2	5	14,14,15	2.13	2 (14%)	17,19,21	0.85	1 (5%)
5	NAG	D	1	1,5	14,14,15	2.10	2 (14%)	17,19,21	0.87	0
5	NAG	D	2	5	14,14,15	2.12	2 (14%)	17,19,21	0.76	0
6	NAG	E	1	1,6	14,14,15	1.93	2 (14%)	17,19,21	1.02	1 (5%)
6	NAG	E	2	6	14,14,15	2.03	3 (21%)	17,19,21	1.01	2 (11%)
6	BMA	E	3	6	11,11,12	1.81	2 (18%)	15,15,17	1.01	1 (6%)
6	MAN	E	4	6	11,11,12	1.73	2 (18%)	15,15,17	0.94	1 (6%)
5	NAG	F	1	1,5	14,14,15	1.96	3 (21%)	17,19,21	1.17	1 (5%)
5	NAG	F	2	5	14,14,15	2.07	2 (14%)	17,19,21	1.31	2 (11%)
5	NAG	G	1	1,5	14,14,15	2.00	3 (21%)	17,19,21	1.04	2 (11%)
5	NAG	G	2	5	14,14,15	2.13	2 (14%)	17,19,21	0.82	0

In the following table, the Chirals column lists the number of chiral outliers, the number of chiral centers analysed, the number of these observed in the model and the number defined in the Chemical Component Dictionary. Similar counts are reported in the Torsion and Rings columns. '2' means no outliers of that kind were identified.



Mol	Type	Chain	Res	Link	Chirals	Torsions	Rings
5	NAG	C	1	1,5	-	0/6/23/26	0/1/1/1
5	NAG	C	2	5	-	2/6/23/26	0/1/1/1
5	NAG	D	1	1,5	-	0/6/23/26	0/1/1/1
5	NAG	D	2	5	-	1/6/23/26	0/1/1/1
6	NAG	E	1	1,6	-	2/6/23/26	0/1/1/1
6	NAG	E	2	6	-	0/6/23/26	0/1/1/1
6	BMA	E	3	6	-	1/2/19/22	0/1/1/1
6	MAN	E	4	6	-	1/2/19/22	0/1/1/1
5	NAG	F	1	1,5	-	0/6/23/26	0/1/1/1
5	NAG	F	2	5	-	2/6/23/26	0/1/1/1
5	NAG	G	1	1,5	-	0/6/23/26	0/1/1/1
5	NAG	G	2	5	-	1/6/23/26	0/1/1/1

All (27) bond length outliers are listed below:

Mol	Chain	Res	Type	Atoms	Z	Observed(Å)	Ideal(Å)
5	G	2	NAG	O5-C1	6.74	1.55	1.43
5	D	2	NAG	O5-C1	6.70	1.54	1.43
5	C	2	NAG	O5-C1	6.64	1.54	1.43
5	F	2	NAG	O5-C1	6.47	1.54	1.43
5	D	1	NAG	O5-C1	6.33	1.54	1.43
6	E	2	NAG	O5-C1	6.10	1.53	1.43
5	C	1	NAG	O5-C1	6.10	1.53	1.43
5	G	1	NAG	O5-C1	6.04	1.53	1.43
6	E	1	NAG	O5-C1	6.03	1.53	1.43
5	F	1	NAG	O5-C1	5.67	1.53	1.43
6	E	3	BMA	O2-C2	-4.18	1.34	1.43
6	E	4	MAN	O2-C2	-4.11	1.34	1.43
5	D	1	NAG	C3-C2	-2.67	1.46	1.52
5	G	2	NAG	C3-C2	-2.55	1.47	1.52
5	F	1	NAG	C1-C2	-2.55	1.48	1.52
6	E	3	BMA	C2-C3	-2.49	1.48	1.52
6	E	2	NAG	C3-C2	-2.47	1.47	1.52
5	D	2	NAG	C3-C2	-2.44	1.47	1.52
5	C	2	NAG	C3-C2	-2.42	1.47	1.52
6	E	1	NAG	C3-C2	-2.42	1.47	1.52
5	F	1	NAG	C3-C2	-2.34	1.47	1.52
5	F	2	NAG	C3-C2	-2.29	1.47	1.52
6	E	2	NAG	C1-C2	-2.20	1.49	1.52
5	G	1	NAG	C3-C2	-2.19	1.47	1.52
5	C	1	NAG	C3-C2	-2.18	1.47	1.52
5	G	1	NAG	C4-C3	2.11	1.57	1.52
6	E	4	MAN	C2-C3	-2.08	1.49	1.52

All (13) bond angle outliers are listed below:

Mol	Chain	Res	Type	Atoms	Z	Observed(°)	Ideal(°)
5	F	1	NAG	C3-C4-C5	-3.30	104.25	110.23
5	F	2	NAG	C4-C3-C2	-3.30	106.19	111.02
6	E	1	NAG	C3-C4-C5	-3.11	104.59	110.23
5	C	1	NAG	C3-C4-C5	-2.98	104.83	110.23
6	E	3	BMA	C2-C3-C4	-2.68	106.15	110.86
5	F	2	NAG	O5-C1-C2	-2.44	107.52	111.29
6	E	2	NAG	O5-C5-C6	-2.34	103.11	107.66
5	C	2	NAG	C4-C3-C2	-2.30	107.64	111.02
5	G	1	NAG	C3-C4-C5	-2.29	106.07	110.23
6	E	2	NAG	C3-C4-C5	-2.25	106.15	110.23
5	G	1	NAG	O5-C5-C6	-2.21	103.36	107.66
5	C	1	NAG	C1-O5-C5	-2.15	109.30	112.19
6	E	4	MAN	C2-C3-C4	-2.15	107.09	110.86

There are no chirality outliers.

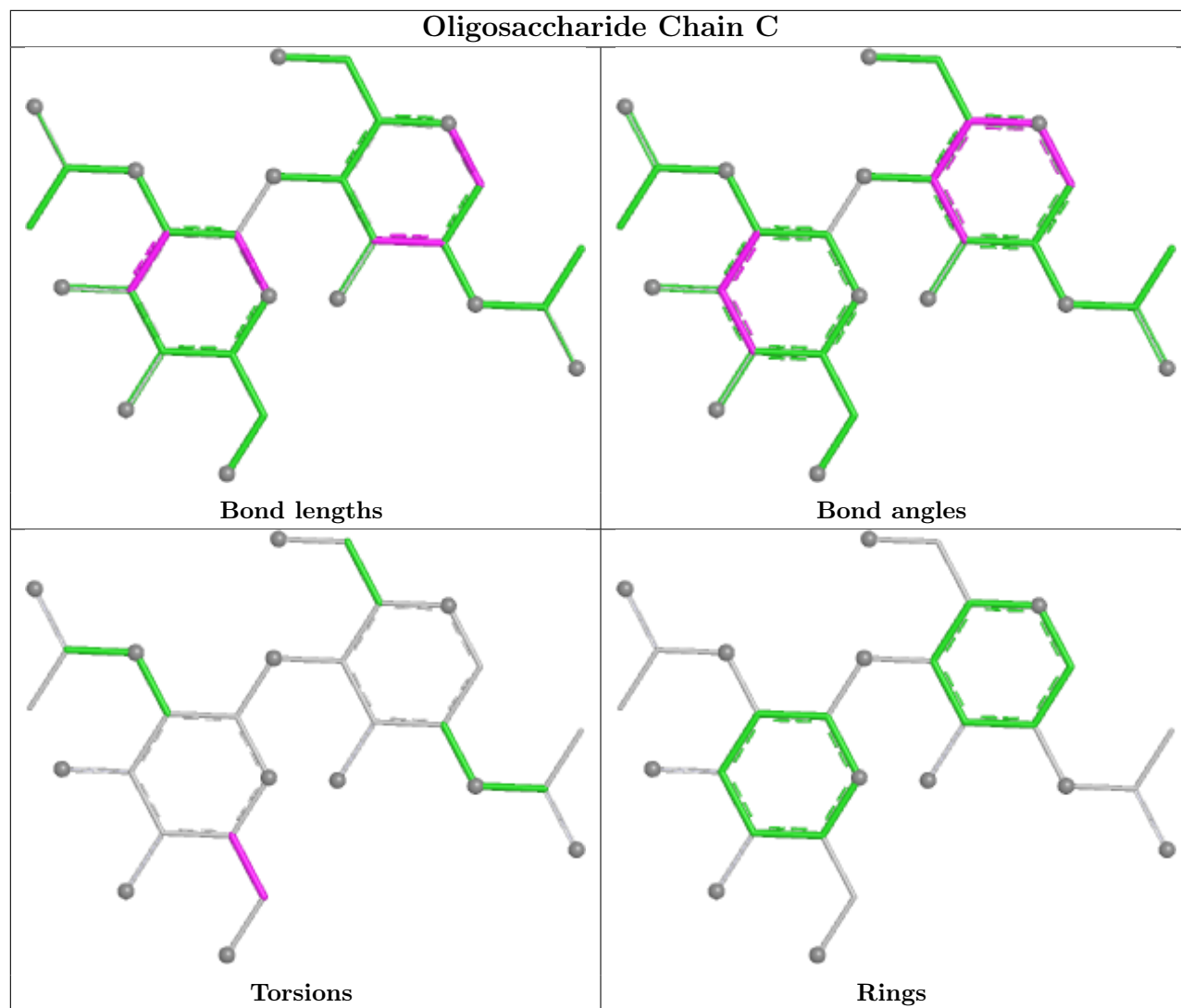
All (10) torsion outliers are listed below:

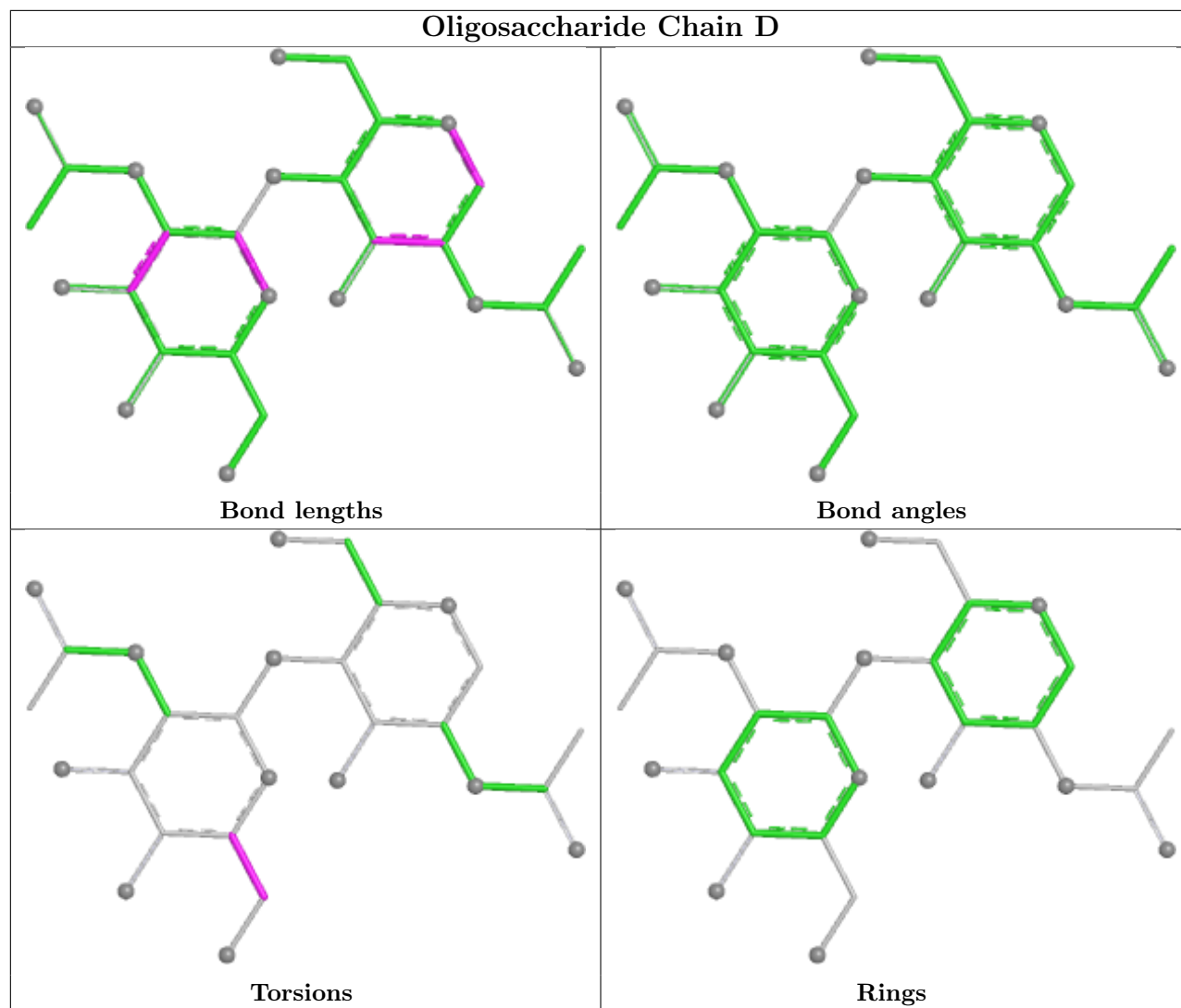
Mol	Chain	Res	Type	Atoms
6	E	1	NAG	O5-C5-C6-O6
5	F	2	NAG	C4-C5-C6-O6
6	E	1	NAG	C4-C5-C6-O6
5	C	2	NAG	O5-C5-C6-O6
5	F	2	NAG	O5-C5-C6-O6
5	G	2	NAG	O5-C5-C6-O6
6	E	4	MAN	O5-C5-C6-O6
5	C	2	NAG	C4-C5-C6-O6
5	D	2	NAG	O5-C5-C6-O6
6	E	3	BMA	O5-C5-C6-O6

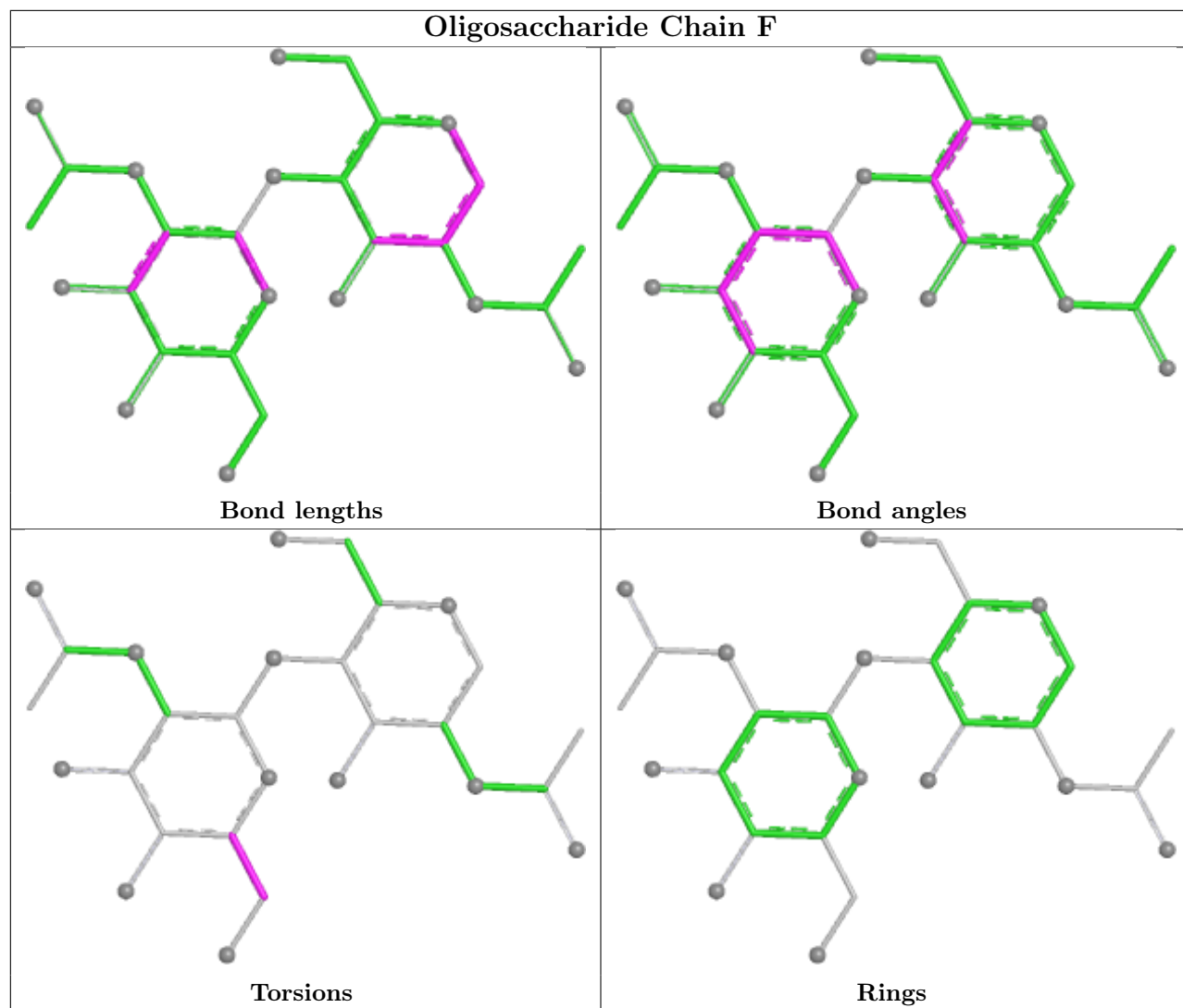
There are no ring outliers.

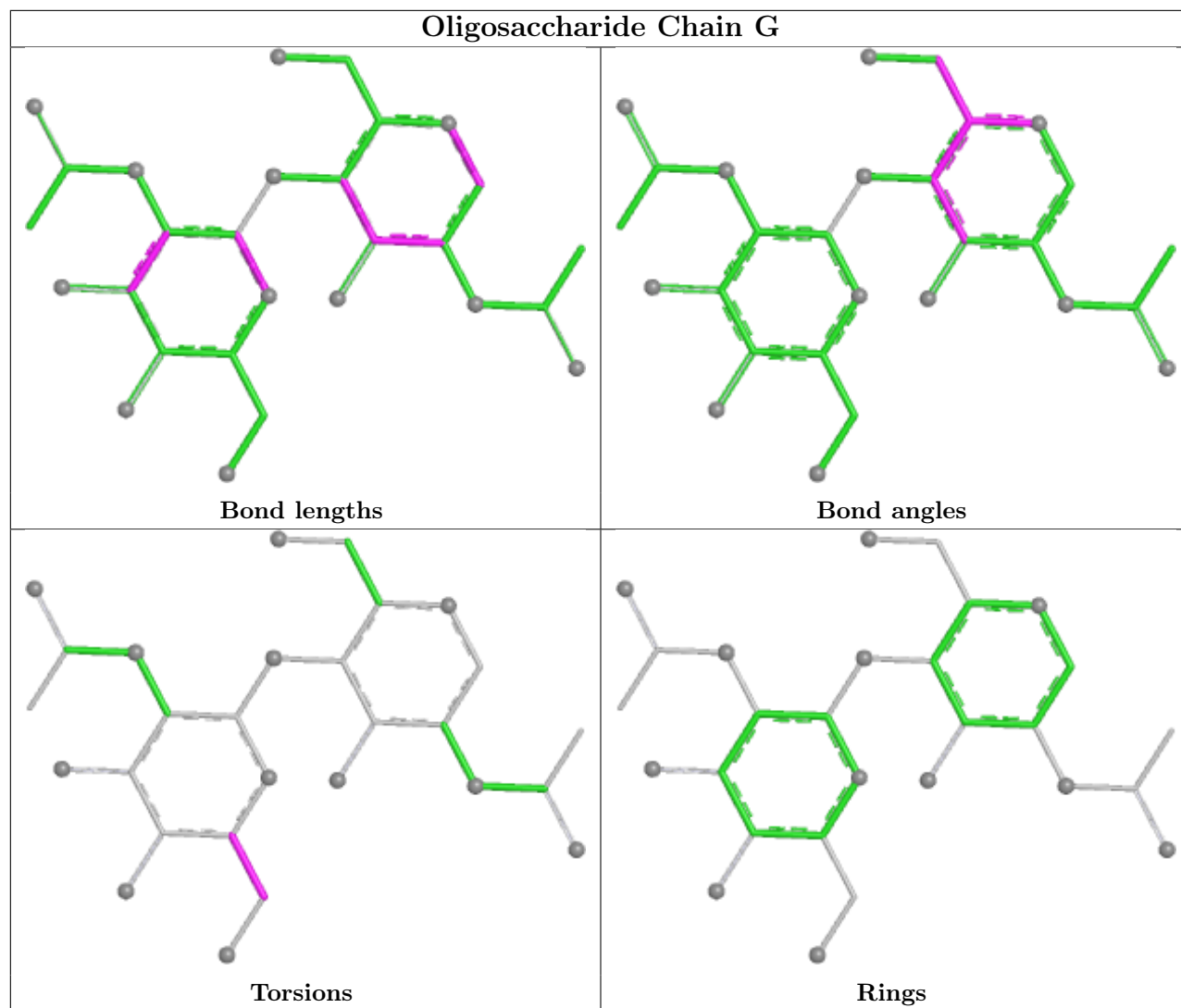
No monomer is involved in short contacts.

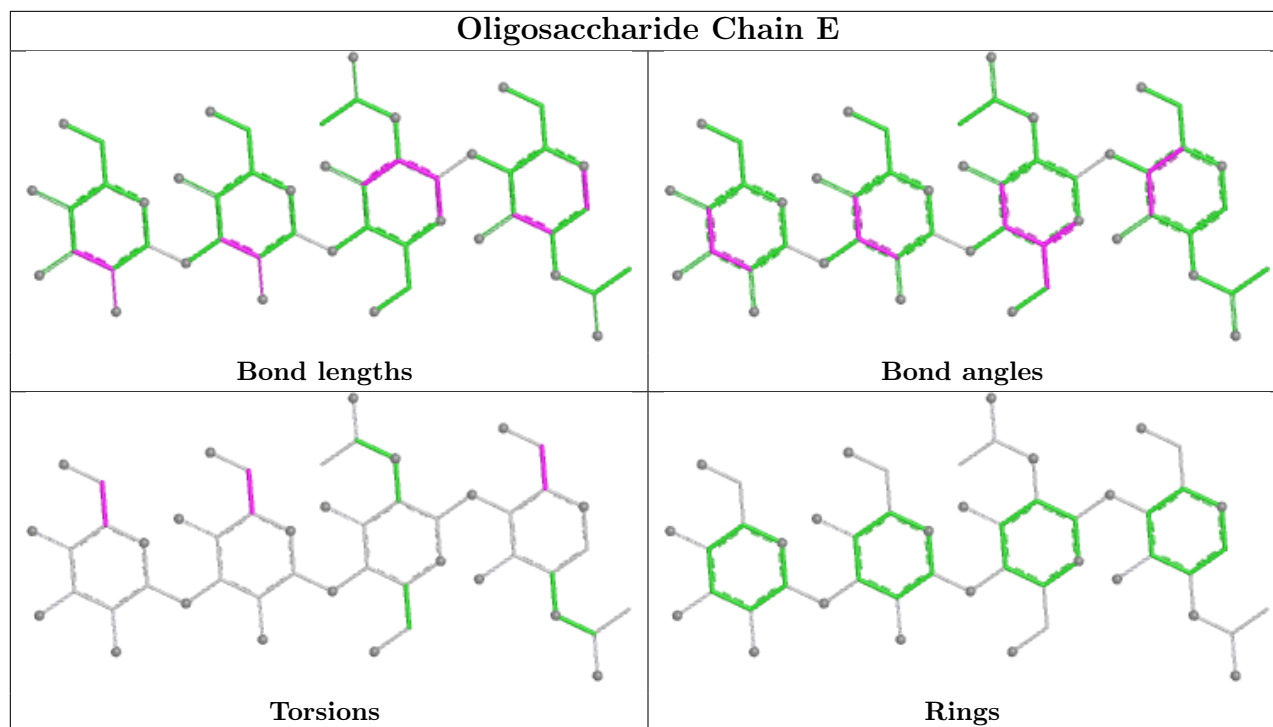
The following is a two-dimensional graphical depiction of Mogul quality analysis of bond lengths, bond angles, torsion angles, and ring geometry for oligosaccharide.











## 5.6 Ligand geometry [i](#)

17 ligands are modelled in this entry.

In the following table, the Counts columns list the number of bonds (or angles) for which Mogul statistics could be retrieved, the number of bonds (or angles) that are observed in the model and the number of bonds (or angles) that are defined in the Chemical Component Dictionary. The Link column lists molecule types, if any, to which the group is linked. The Z score for a bond length (or angle) is the number of standard deviations the observed value is removed from the expected value. A bond length (or angle) with  $|Z| > 2$  is considered an outlier worth inspection. RMSZ is the root-mean-square of all Z scores of the bond lengths (or angles).

Mol	Type	Chain	Res	Link	Bond lengths			Bond angles		
					Counts	RMSZ	# $ Z  > 2$	Counts	RMSZ	# $ Z  > 2$
7	NAG	A	623	1	14,14,15	2.07	2 (14%)	17,19,21	0.81	0
7	NAG	A	606	1	14,14,15	2.12	3 (21%)	17,19,21	0.72	0
7	NAG	A	617	1	14,14,15	2.00	2 (14%)	17,19,21	0.83	0
7	NAG	A	619	1	14,14,15	2.02	2 (14%)	17,19,21	0.75	1 (5%)
7	NAG	A	618	1	14,14,15	2.07	2 (14%)	17,19,21	0.67	0
7	NAG	B	701	2	14,14,15	2.07	2 (14%)	17,19,21	0.76	0
7	NAG	A	615	1	14,14,15	2.03	2 (14%)	17,19,21	0.86	0
7	NAG	A	616	1	14,14,15	2.02	2 (14%)	17,19,21	0.71	0
7	NAG	A	602	1	14,14,15	2.00	2 (14%)	17,19,21	0.67	0
7	NAG	A	603	1	14,14,15	2.06	2 (14%)	17,19,21	0.67	0

Mol	Type	Chain	Res	Link	Bond lengths			Bond angles		
					Counts	RMSZ	# Z  > 2	Counts	RMSZ	# Z  > 2
7	NAG	B	703	2	14,14,15	2.08	2 (14%)	17,19,21	0.77	0
7	NAG	B	704	2	14,14,15	2.06	2 (14%)	17,19,21	0.73	0
7	NAG	A	609	1	14,14,15	2.02	3 (21%)	17,19,21	0.85	1 (5%)
7	NAG	A	601	1	14,14,15	2.00	2 (14%)	17,19,21	0.95	1 (5%)
7	NAG	A	614	1	14,14,15	2.00	3 (21%)	17,19,21	0.87	1 (5%)
7	NAG	A	620	1	14,14,15	2.04	2 (14%)	17,19,21	0.66	0
7	NAG	B	702	2	14,14,15	1.94	2 (14%)	17,19,21	1.15	2 (11%)

In the following table, the Chirals column lists the number of chiral outliers, the number of chiral centers analysed, the number of these observed in the model and the number defined in the Chemical Component Dictionary. Similar counts are reported in the Torsion and Rings columns. '-' means no outliers of that kind were identified.

Mol	Type	Chain	Res	Link	Chirals	Torsions	Rings
7	NAG	A	623	1	-	1/6/23/26	0/1/1/1
7	NAG	A	606	1	-	1/6/23/26	0/1/1/1
7	NAG	A	617	1	-	2/6/23/26	0/1/1/1
7	NAG	A	619	1	-	1/6/23/26	0/1/1/1
7	NAG	A	618	1	-	1/6/23/26	0/1/1/1
7	NAG	B	701	2	-	2/6/23/26	0/1/1/1
7	NAG	A	615	1	-	0/6/23/26	0/1/1/1
7	NAG	A	616	1	-	2/6/23/26	0/1/1/1
7	NAG	A	602	1	-	1/6/23/26	0/1/1/1
7	NAG	A	603	1	-	2/6/23/26	0/1/1/1
7	NAG	B	703	2	-	1/6/23/26	0/1/1/1
7	NAG	B	704	2	-	2/6/23/26	0/1/1/1
7	NAG	A	609	1	-	2/6/23/26	0/1/1/1
7	NAG	A	601	1	-	1/6/23/26	0/1/1/1
7	NAG	A	614	1	-	2/6/23/26	0/1/1/1
7	NAG	A	620	1	-	1/6/23/26	0/1/1/1
7	NAG	B	702	2	-	1/6/23/26	0/1/1/1

All (37) bond length outliers are listed below:

Mol	Chain	Res	Type	Atoms	Z	Observed(Å)	Ideal(Å)
7	B	703	NAG	O5-C1	6.80	1.55	1.43
7	A	603	NAG	O5-C1	6.73	1.55	1.43
7	B	704	NAG	O5-C1	6.70	1.55	1.43
7	A	618	NAG	O5-C1	6.67	1.54	1.43

*Continued on next page...*



*Continued from previous page...*

Mol	Chain	Res	Type	Atoms	Z	Observed(Å)	Ideal(Å)
7	A	619	NAG	O5-C1	6.63	1.54	1.43
7	A	623	NAG	O5-C1	6.60	1.54	1.43
7	A	620	NAG	O5-C1	6.55	1.54	1.43
7	A	606	NAG	O5-C1	6.51	1.54	1.43
7	B	701	NAG	O5-C1	6.51	1.54	1.43
7	A	602	NAG	O5-C1	6.40	1.54	1.43
7	A	616	NAG	O5-C1	6.37	1.54	1.43
7	A	601	NAG	O5-C1	6.26	1.54	1.43
7	B	702	NAG	O5-C1	6.24	1.54	1.43
7	A	615	NAG	O5-C1	6.14	1.54	1.43
7	A	609	NAG	O5-C1	6.13	1.54	1.43
7	A	617	NAG	O5-C1	6.08	1.53	1.43
7	A	614	NAG	O5-C1	6.00	1.53	1.43
7	A	615	NAG	C3-C2	-2.79	1.46	1.52
7	A	617	NAG	C3-C2	-2.74	1.46	1.52
7	A	606	NAG	C3-C2	-2.62	1.47	1.52
7	A	623	NAG	C3-C2	-2.42	1.47	1.52
7	A	616	NAG	C3-C2	-2.38	1.47	1.52
7	B	704	NAG	C3-C2	-2.35	1.47	1.52
7	A	620	NAG	C3-C2	-2.32	1.47	1.52
7	A	614	NAG	C3-C2	-2.32	1.47	1.52
7	A	609	NAG	C3-C2	-2.32	1.47	1.52
7	A	602	NAG	C3-C2	-2.26	1.47	1.52
7	A	618	NAG	C3-C2	-2.25	1.47	1.52
7	A	609	NAG	C1-C2	-2.23	1.49	1.52
7	B	701	NAG	C3-C2	-2.20	1.47	1.52
7	B	703	NAG	C3-C2	-2.19	1.47	1.52
7	B	702	NAG	C4-C3	2.12	1.57	1.52
7	A	601	NAG	C3-C2	-2.11	1.48	1.52
7	A	619	NAG	C3-C2	-2.09	1.48	1.52
7	A	614	NAG	C1-C2	-2.07	1.49	1.52
7	A	606	NAG	C1-C2	-2.04	1.49	1.52
7	A	603	NAG	C3-C2	-2.00	1.48	1.52

All (6) bond angle outliers are listed below:

Mol	Chain	Res	Type	Atoms	Z	Observed(°)	Ideal(°)
7	B	702	NAG	C4-C3-C2	-3.18	106.36	111.02
7	B	702	NAG	C1-O5-C5	-3.07	108.07	112.19
7	A	601	NAG	C4-C3-C2	-2.49	107.37	111.02
7	A	619	NAG	C4-C3-C2	-2.12	107.92	111.02
7	A	609	NAG	C1-O5-C5	-2.07	109.41	112.19

*Continued on next page...*

*Continued from previous page...*

Mol	Chain	Res	Type	Atoms	Z	Observed(°)	Ideal(°)
7	A	614	NAG	C4-C3-C2	-2.06	108.00	111.02

There are no chirality outliers.

All (23) torsion outliers are listed below:

Mol	Chain	Res	Type	Atoms
7	A	616	NAG	O5-C5-C6-O6
7	A	614	NAG	C4-C5-C6-O6
7	A	603	NAG	O5-C5-C6-O6
7	A	609	NAG	O5-C5-C6-O6
7	A	617	NAG	O5-C5-C6-O6
7	B	704	NAG	O5-C5-C6-O6
7	A	614	NAG	O5-C5-C6-O6
7	A	601	NAG	O5-C5-C6-O6
7	A	618	NAG	O5-C5-C6-O6
7	A	609	NAG	C4-C5-C6-O6
7	B	703	NAG	O5-C5-C6-O6
7	A	619	NAG	O5-C5-C6-O6
7	A	616	NAG	C4-C5-C6-O6
7	B	702	NAG	O5-C5-C6-O6
7	A	602	NAG	O5-C5-C6-O6
7	A	620	NAG	O5-C5-C6-O6
7	A	606	NAG	O5-C5-C6-O6
7	A	623	NAG	O5-C5-C6-O6
7	A	603	NAG	C4-C5-C6-O6
7	B	701	NAG	O5-C5-C6-O6
7	A	617	NAG	C4-C5-C6-O6
7	B	704	NAG	C4-C5-C6-O6
7	B	701	NAG	C4-C5-C6-O6

There are no ring outliers.

No monomer is involved in short contacts.

## 5.7 Other polymers [i](#)

There are no such residues in this entry.

## 5.8 Polymer linkage issues [i](#)

There are no chain breaks in this entry.

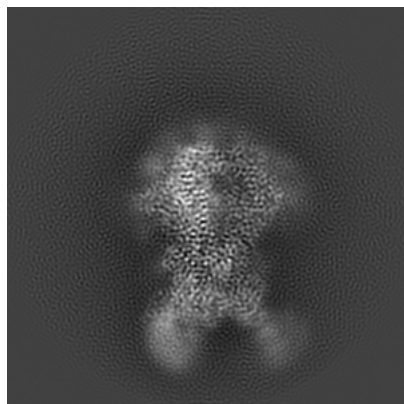
## 6 Map visualisation [i](#)

This section contains visualisations of the EMDB entry EMD-22109. These allow visual inspection of the internal detail of the map and identification of artifacts.

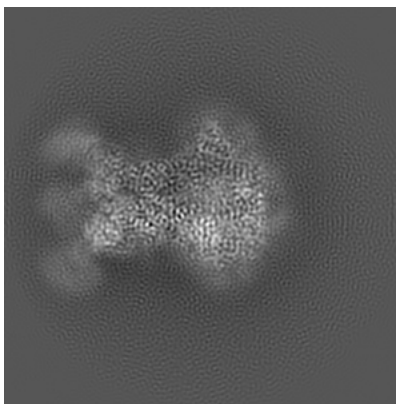
Images derived from a raw map, generated by summing the deposited half-maps, are presented below the corresponding image components of the primary map to allow further visual inspection and comparison with those of the primary map.

### 6.1 Orthogonal projections [i](#)

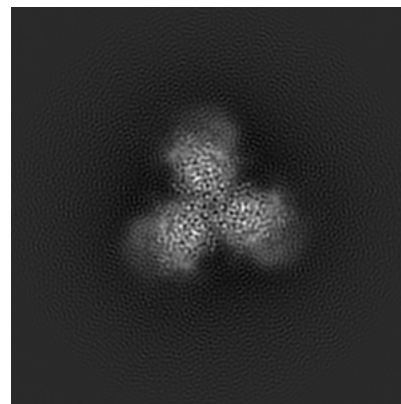
#### 6.1.1 Primary map



X

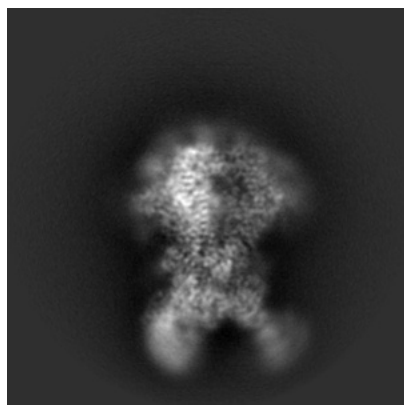


Y

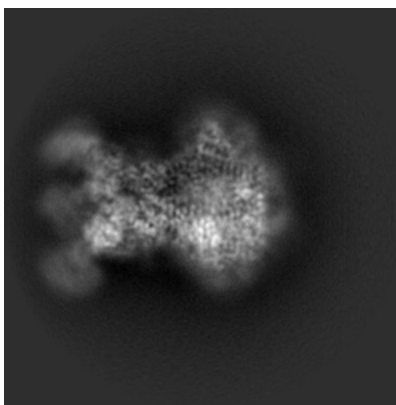


Z

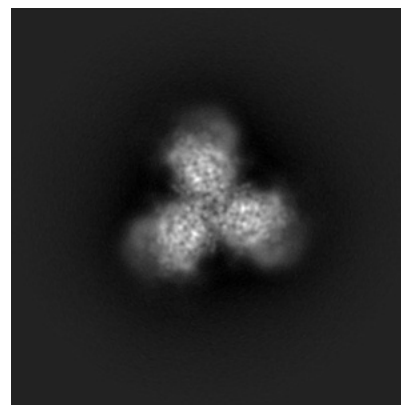
#### 6.1.2 Raw map



X



Y

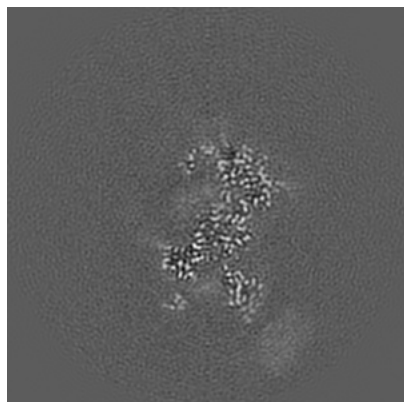


Z

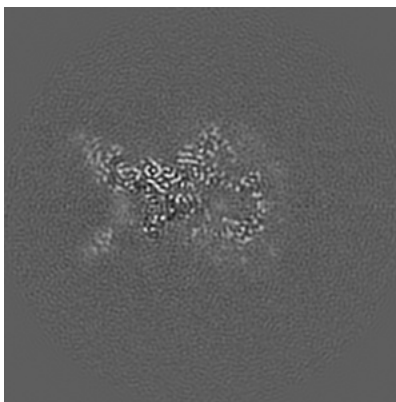
The images above show the map projected in three orthogonal directions.

## 6.2 Central slices [i](#)

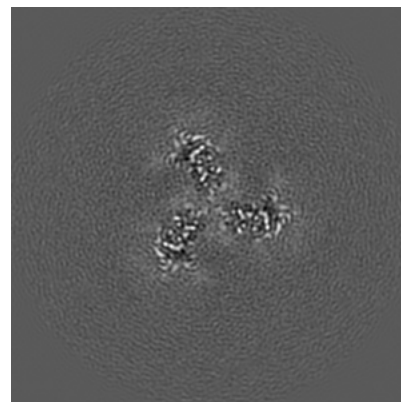
### 6.2.1 Primary map



X Index: 140

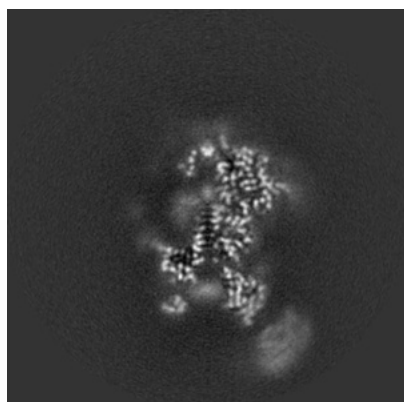


Y Index: 140

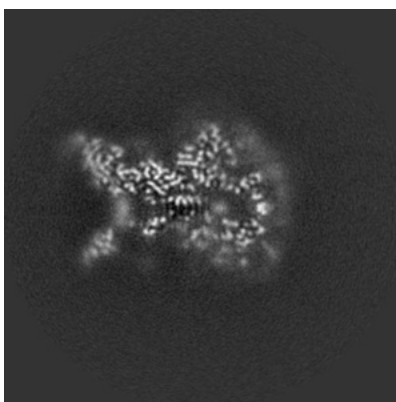


Z Index: 140

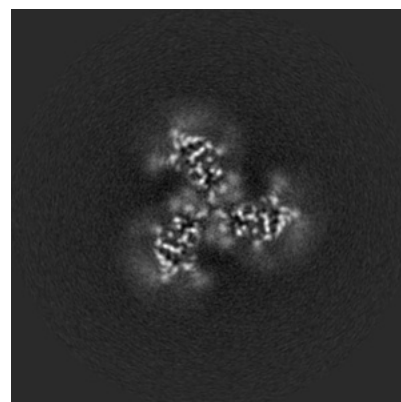
### 6.2.2 Raw map



X Index: 140



Y Index: 140

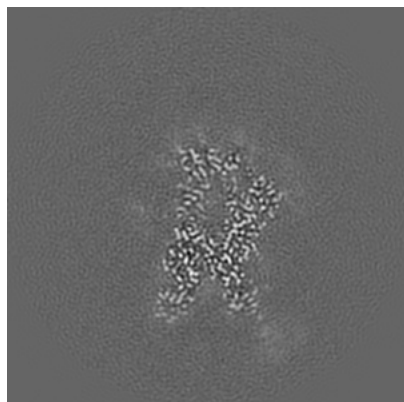


Z Index: 140

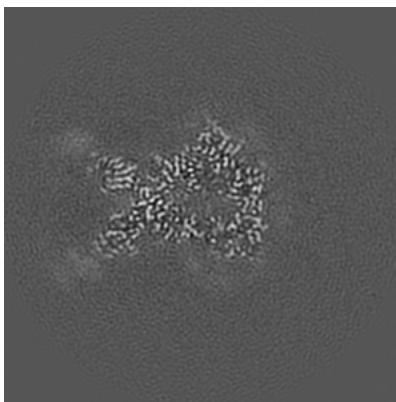
The images above show central slices of the map in three orthogonal directions.

## 6.3 Largest variance slices [i](#)

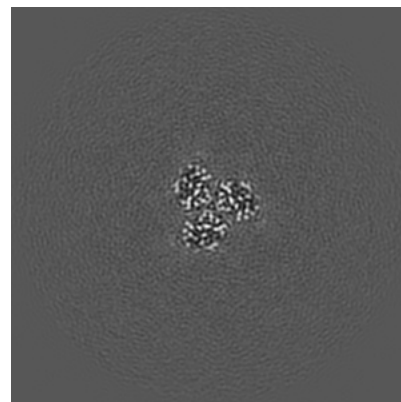
### 6.3.1 Primary map



X Index: 131

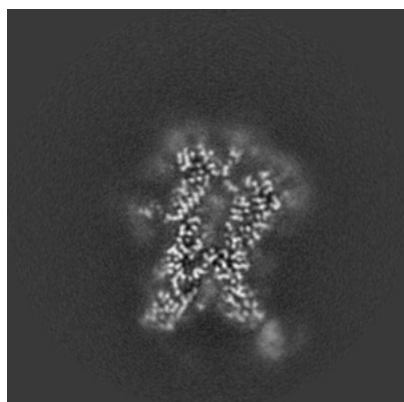


Y Index: 130

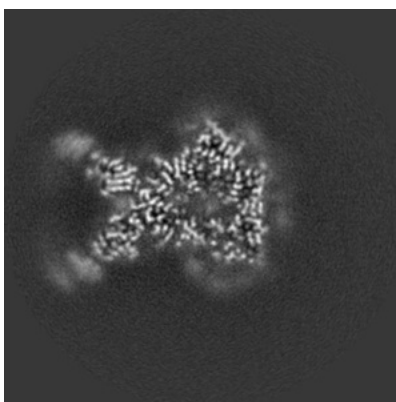


Z Index: 103

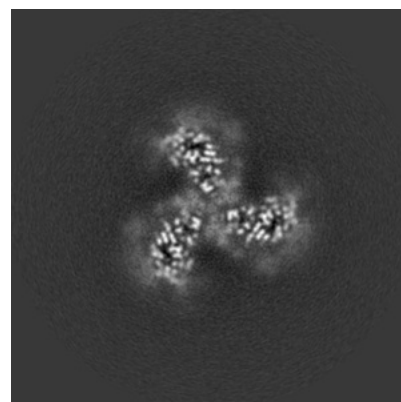
### 6.3.2 Raw map



X Index: 128



Y Index: 130

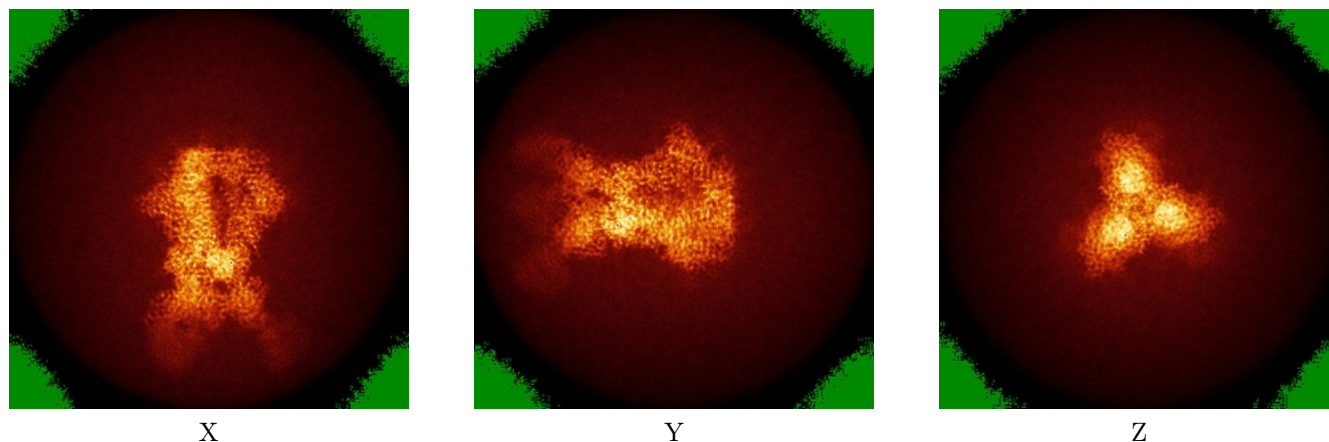


Z Index: 146

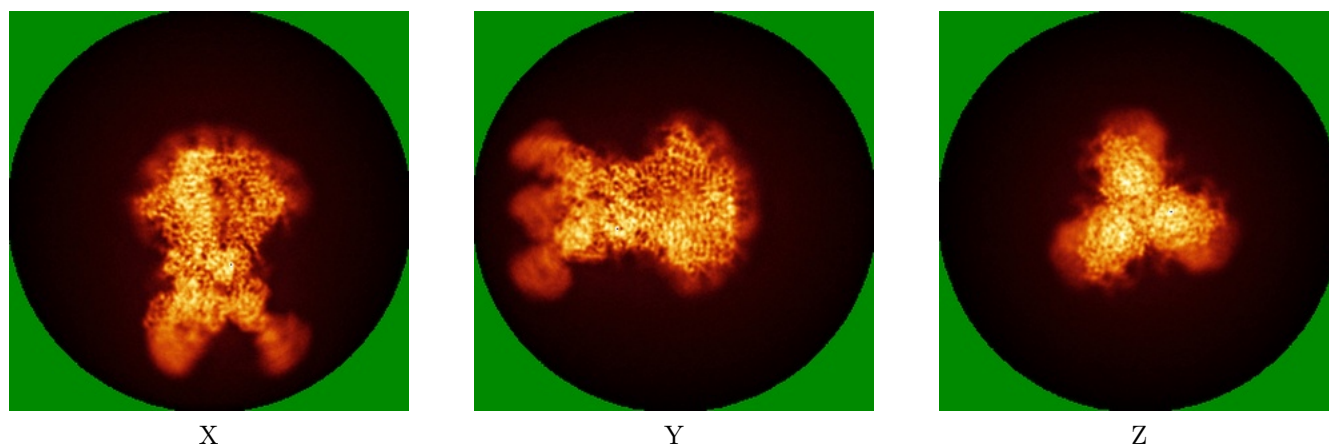
The images above show the largest variance slices of the map in three orthogonal directions.

## 6.4 Orthogonal standard-deviation projections (False-color) [i](#)

### 6.4.1 Primary map



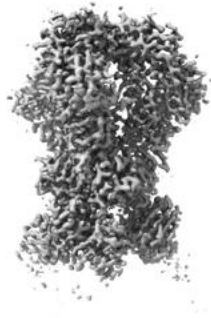
### 6.4.2 Raw map



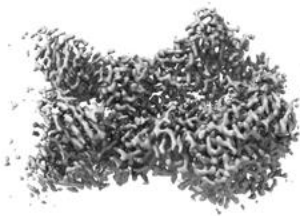
The images above show the map standard deviation projections with false color in three orthogonal directions. Minimum values are shown in green, max in blue, and dark to light orange shades represent small to large values respectively.

## 6.5 Orthogonal surface views [i](#)

### 6.5.1 Primary map



X



Y



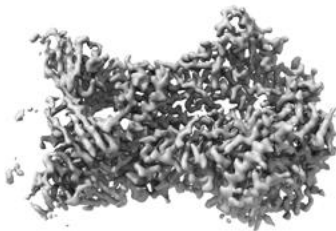
Z

The images above show the 3D surface view of the map at the recommended contour level 0.04. These images, in conjunction with the slice images, may facilitate assessment of whether an appropriate contour level has been provided.

### 6.5.2 Raw map



X



Y



Z

These images show the 3D surface of the raw map. The raw map's contour level was selected so that its surface encloses the same volume as the primary map does at its recommended contour level.

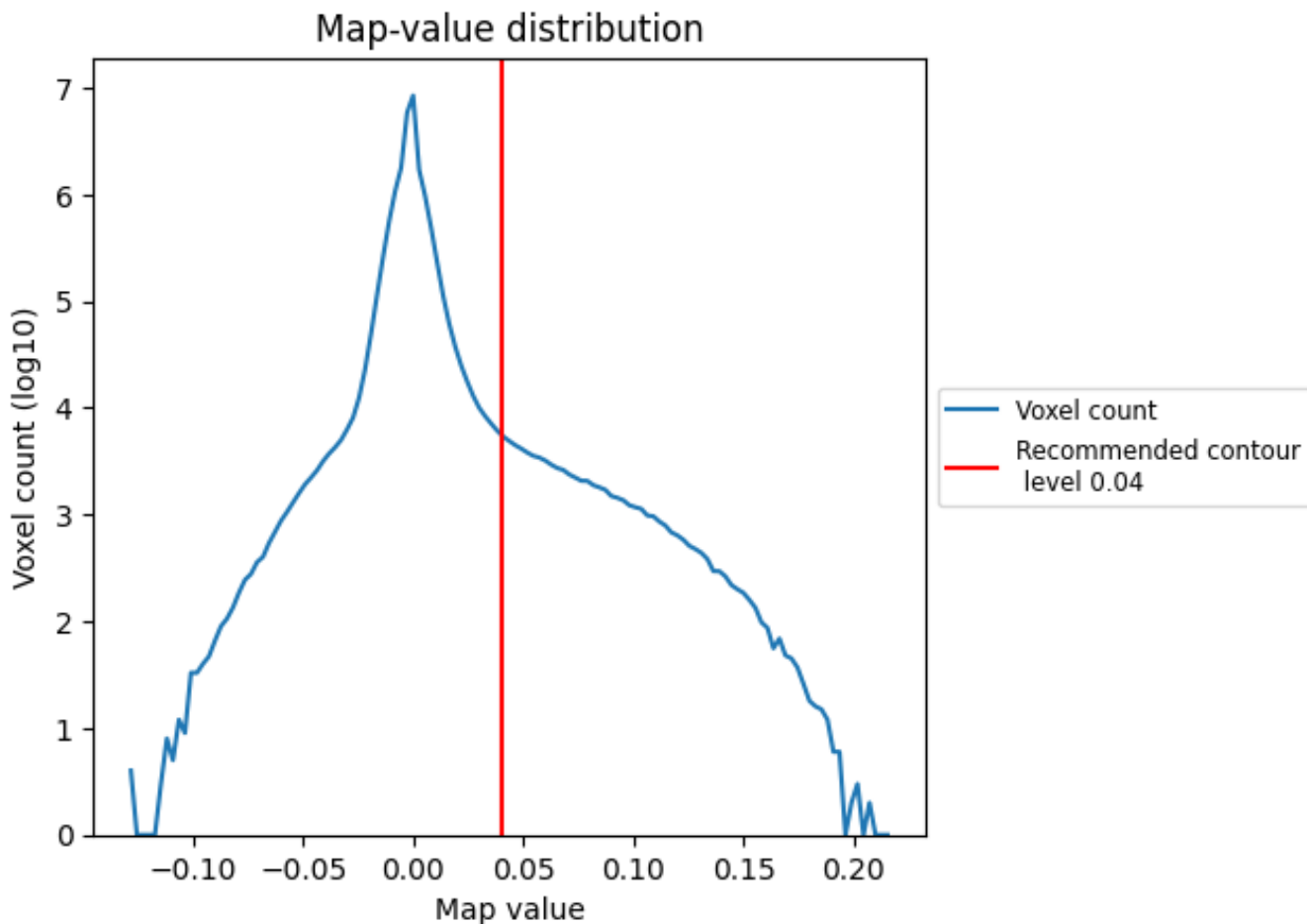
## 6.6 Mask visualisation [i](#)

This section was not generated. No masks/segmentation were deposited.

## 7 Map analysis [i](#)

This section contains the results of statistical analysis of the map.

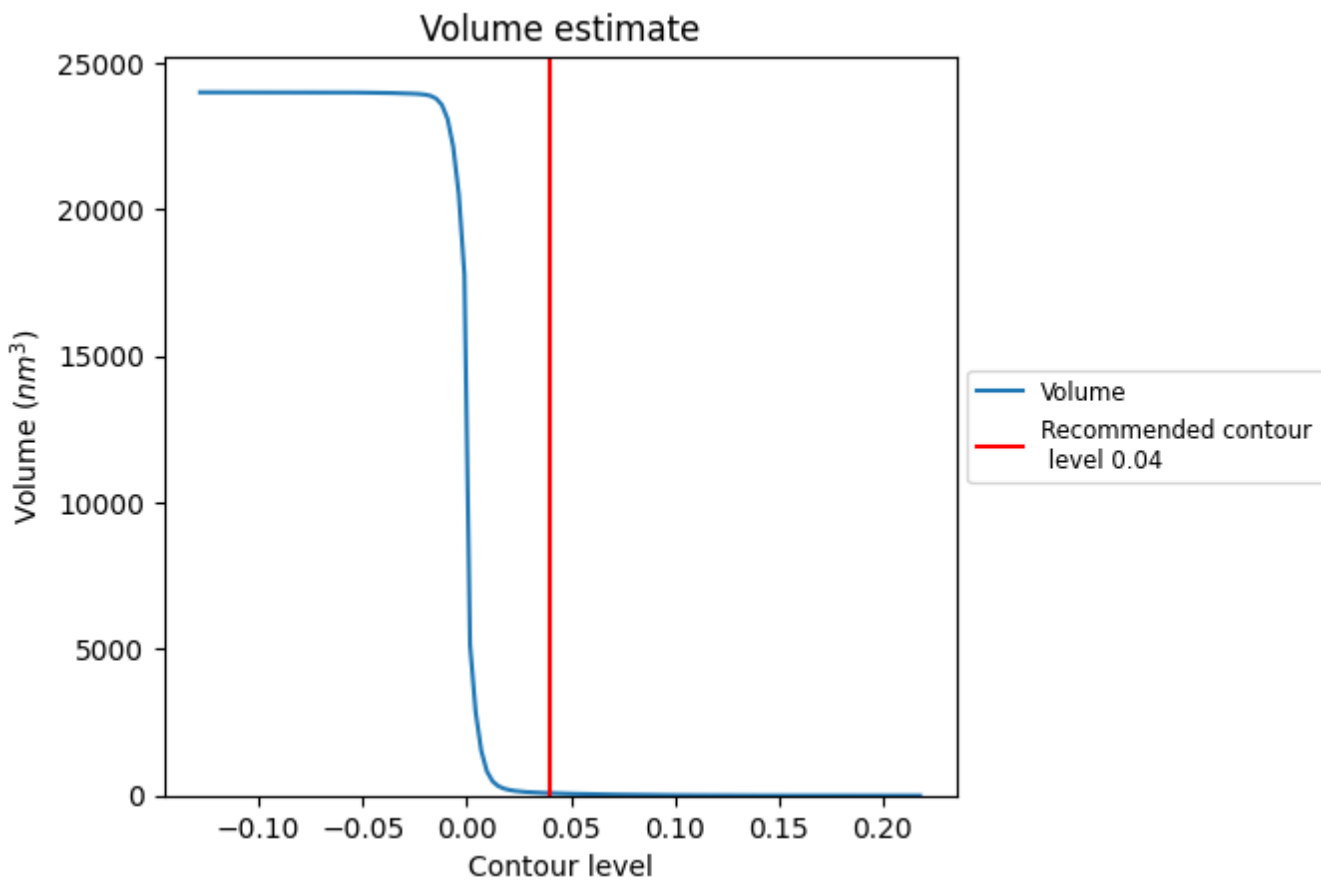
### 7.1 Map-value distribution [i](#)



The map-value distribution is plotted in 128 intervals along the x-axis. The y-axis is logarithmic. A spike in this graph at zero usually indicates that the volume has been masked.



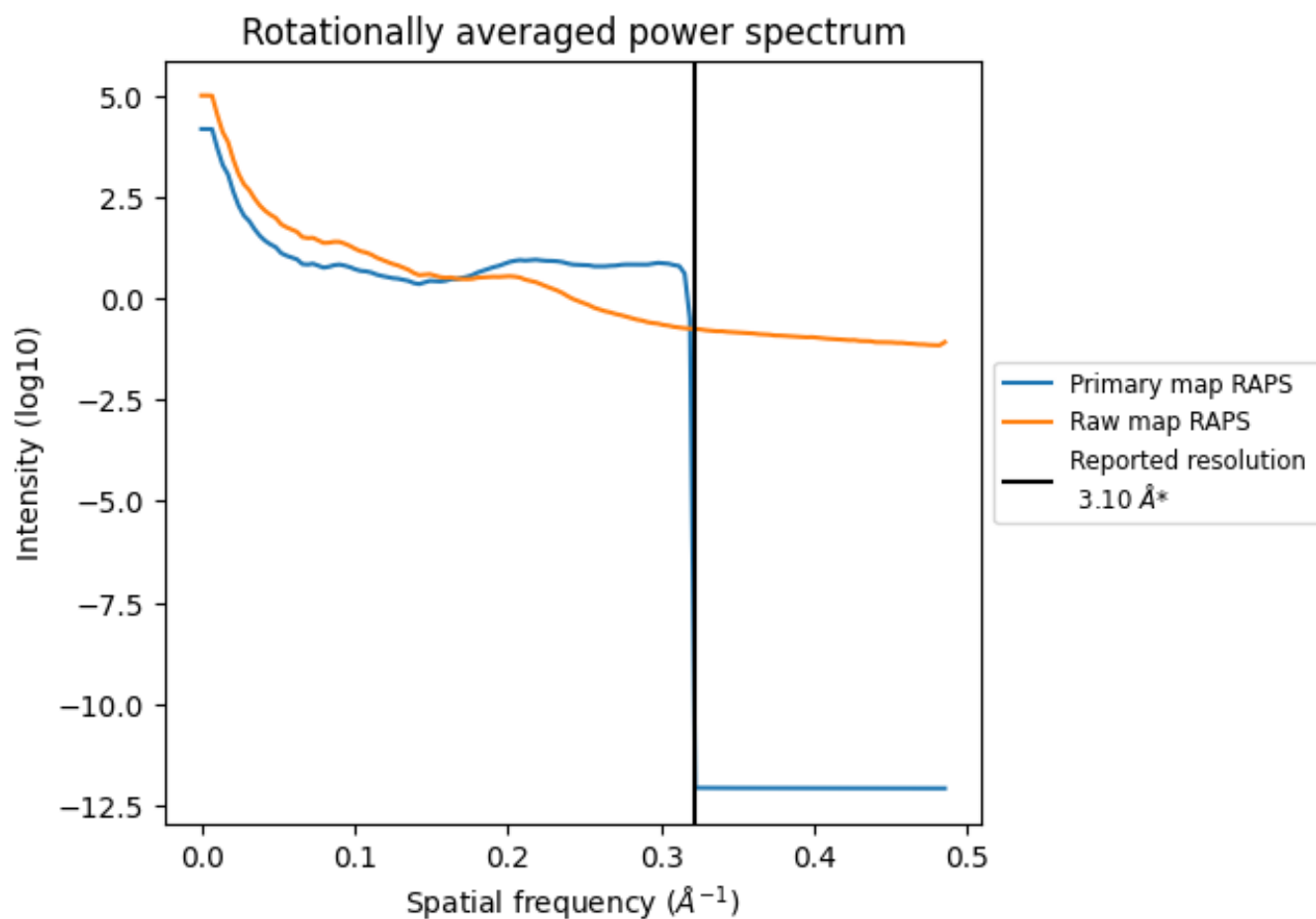
## 7.2 Volume estimate [i](#)



The volume at the recommended contour level is 81 nm<sup>3</sup>; this corresponds to an approximate mass of 74 kDa.

The volume estimate graph shows how the enclosed volume varies with the contour level. The recommended contour level is shown as a vertical line and the intersection between the line and the curve gives the volume of the enclosed surface at the given level.

### 7.3 Rotationally averaged power spectrum [i](#)

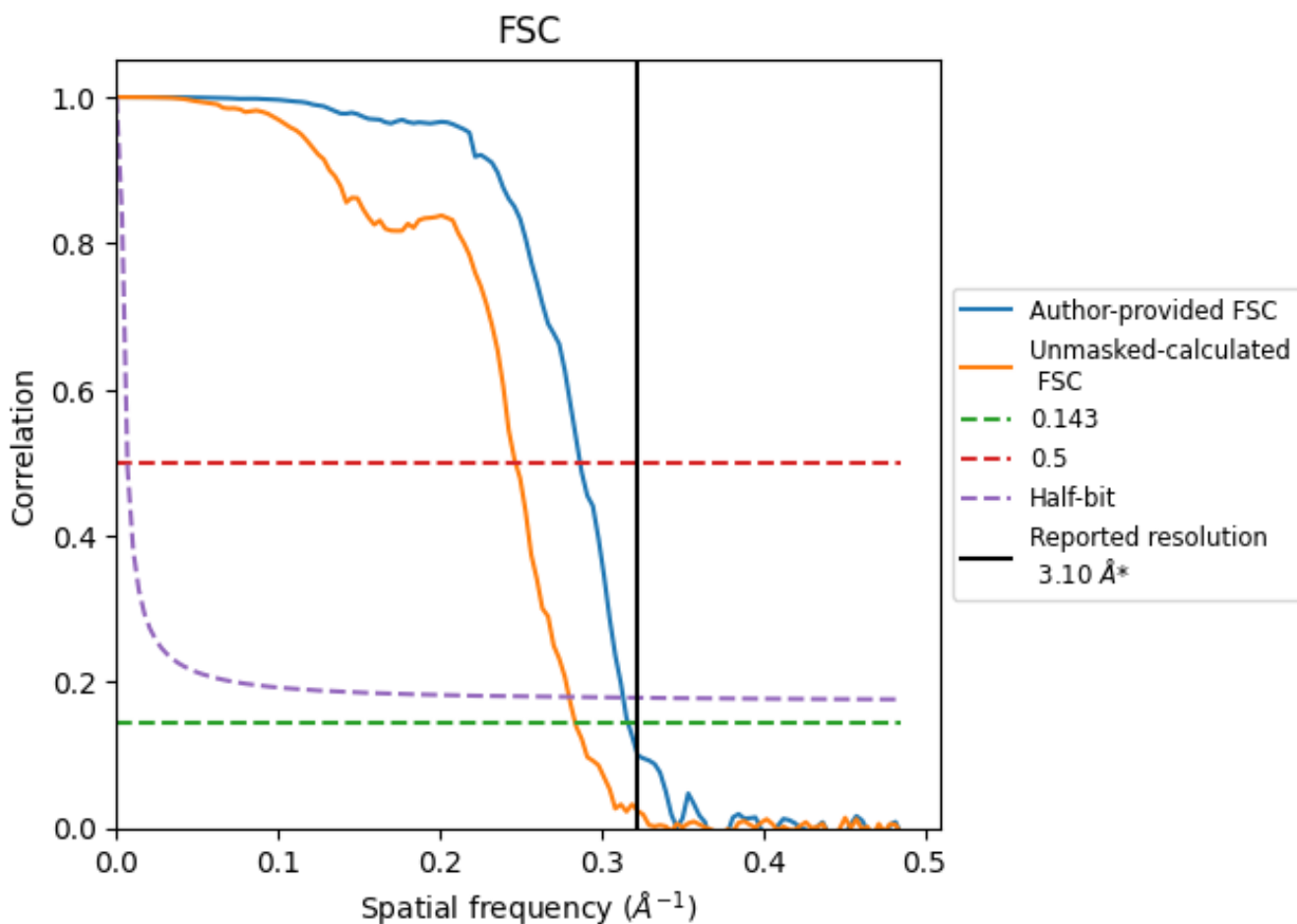


\*Reported resolution corresponds to spatial frequency of 0.323 Å<sup>-1</sup>

## 8 Fourier-Shell correlation [\(i\)](#)

Fourier-Shell Correlation (FSC) is the most commonly used method to estimate the resolution of single-particle and subtomogram-averaged maps. The shape of the curve depends on the imposed symmetry, mask and whether or not the two 3D reconstructions used were processed from a common reference. The reported resolution is shown as a black line. A curve is displayed for the half-bit criterion in addition to lines showing the 0.143 gold standard cut-off and 0.5 cut-off.

### 8.1 FSC [\(i\)](#)



\*Reported resolution corresponds to spatial frequency of 0.323 Å<sup>-1</sup>

## 8.2 Resolution estimates [i](#)

Resolution estimate (Å)	Estimation criterion (FSC cut-off)		
	0.143	0.5	Half-bit
Reported by author	3.10	-	-
Author-provided FSC curve	3.16	3.49	3.19
Unmasked-calculated*	3.52	4.05	3.57

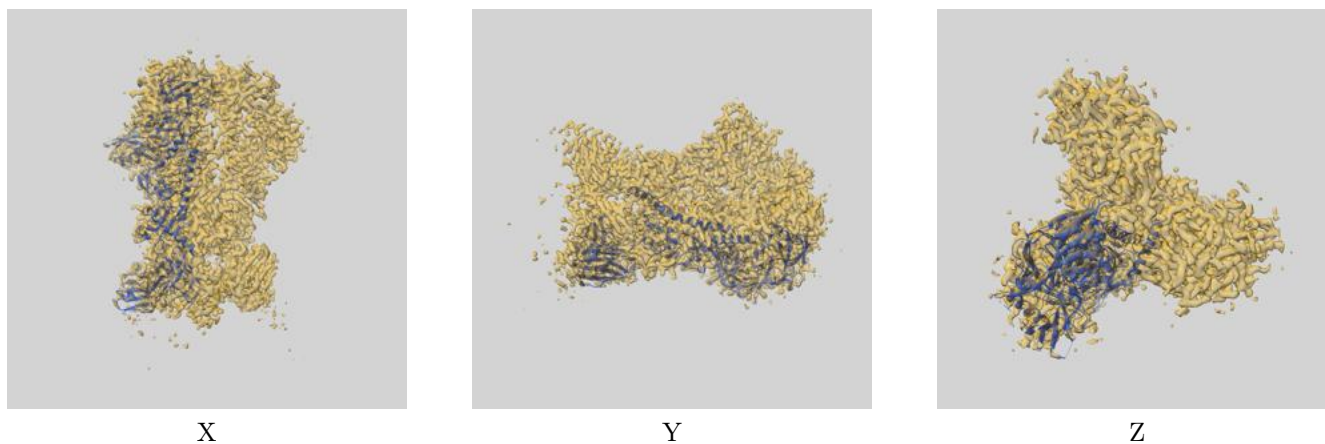
\*Resolution estimate based on FSC curve calculated by comparison of deposited half-maps. The value from deposited half-maps intersecting FSC 0.143 CUT-OFF 3.52 differs from the reported value 3.1 by more than 10 %

## 9 Map-model fit [i](#)

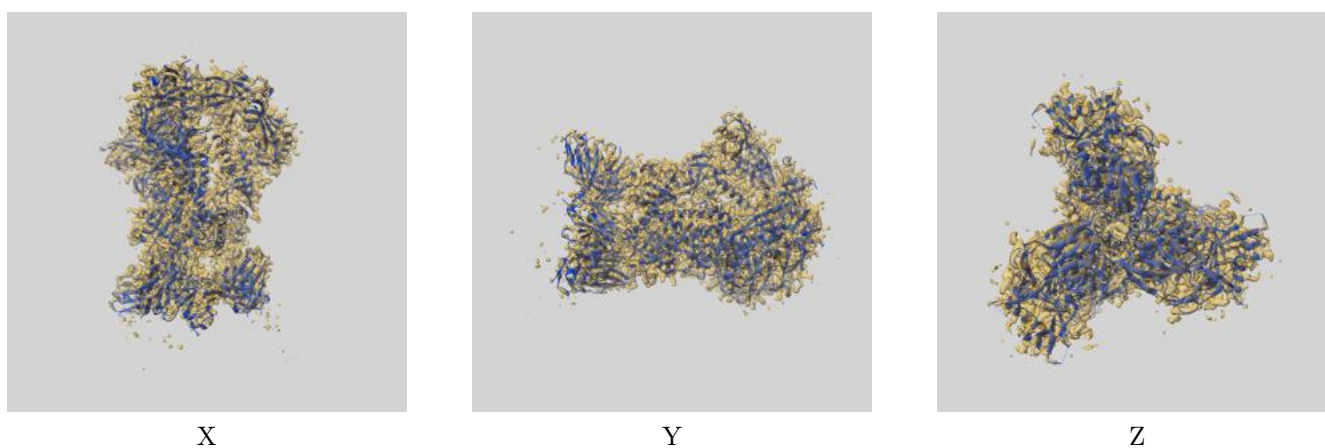
This section contains information regarding the fit between EMDB map EMD-22109 and PDB model 6X9S. Per-residue inclusion information can be found in section 3 on page 8.

### 9.1 Map-model overlays

#### 9.1.1 Map-model overlay [i](#)

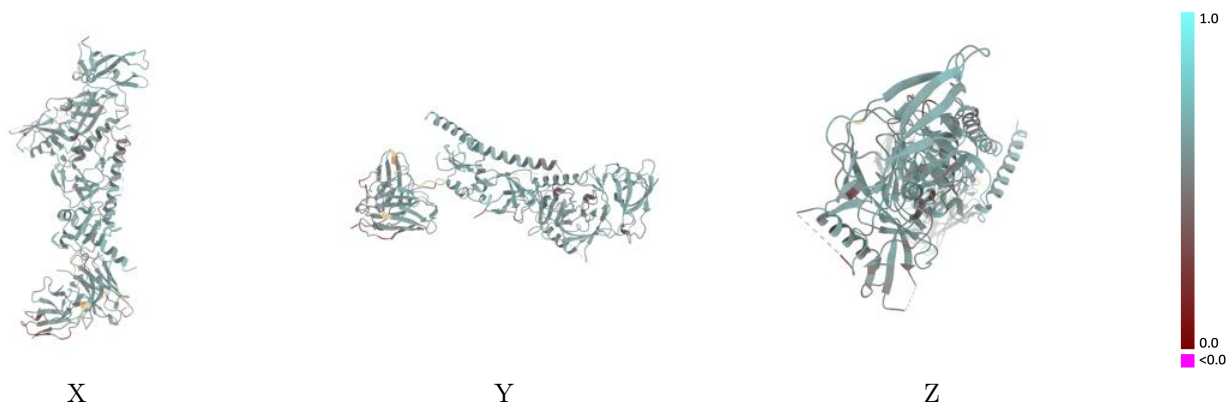


#### 9.1.2 Map-model assembly overlay [i](#)



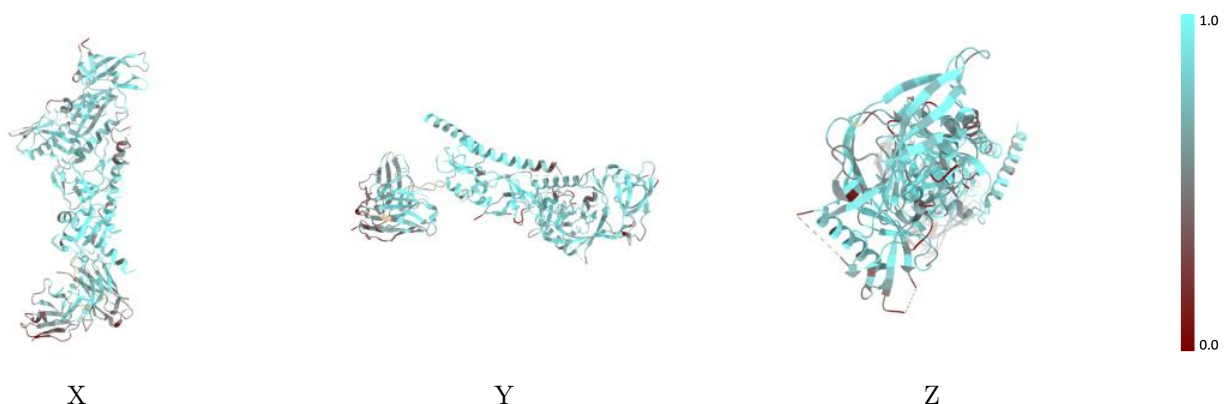
The images above show the 3D surface view of the map at the recommended contour level 0.04 at 50% transparency in yellow overlaid with a ribbon representation of the model coloured in blue. These images allow for the visual assessment of the quality of fit between the atomic model and the map.

## 9.2 Q-score mapped to coordinate model [\(i\)](#)



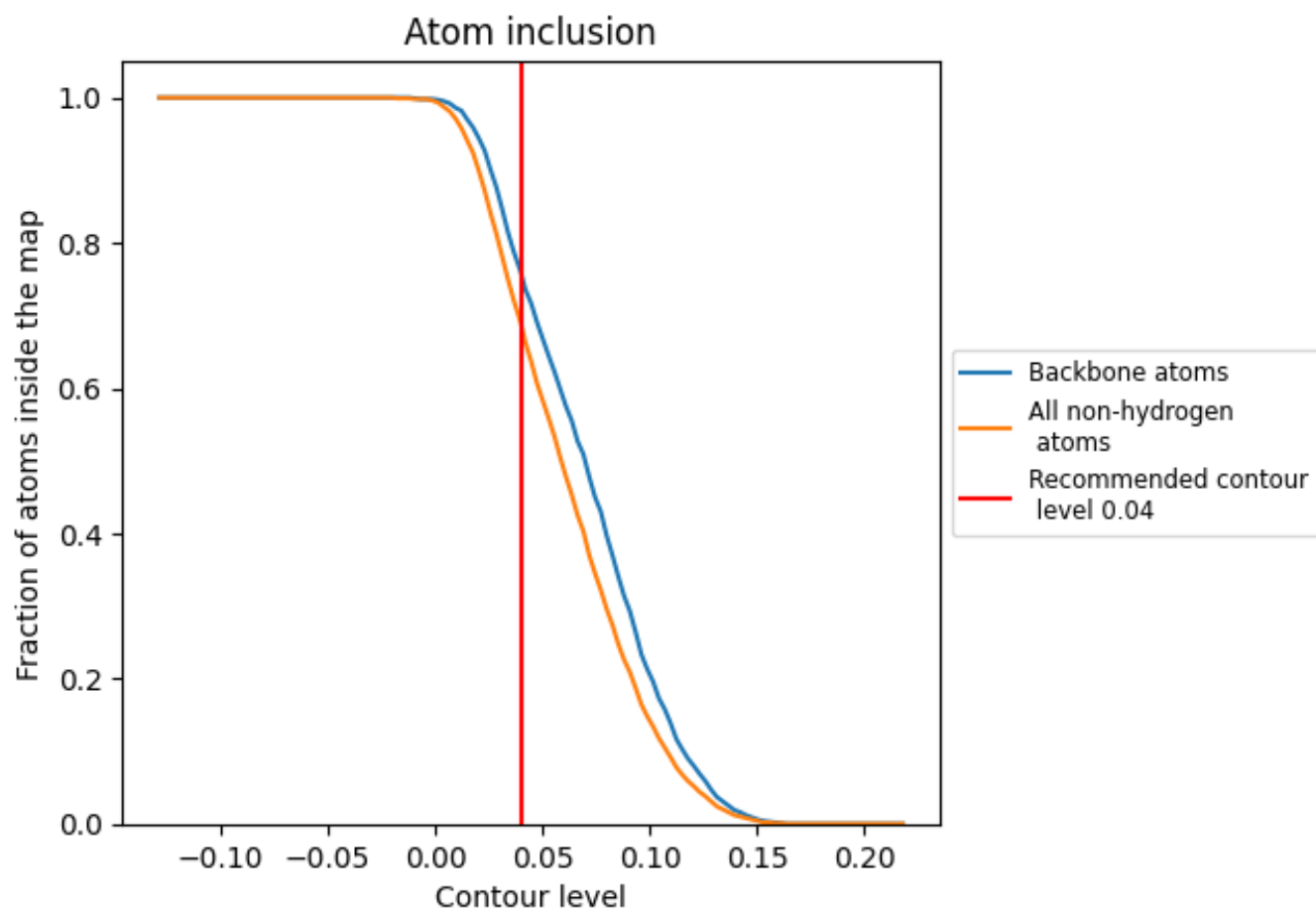
The images above show the model with each residue coloured according to its Q-score. This shows their resolvability in the map with higher Q-score values reflecting better resolvability. Please note: Q-score is calculating the resolvability of atoms, and thus high values are only expected at resolutions at which atoms can be resolved. Low Q-score values may therefore be expected for many entries.

## 9.3 Atom inclusion mapped to coordinate model [\(i\)](#)



The images above show the model with each residue coloured according to its atom inclusion. This shows to what extent they are inside the map at the recommended contour level (0.04).





















## 9.4 Atom inclusion [i](#)



At the recommended contour level, 76% of all backbone atoms, 69% of all non-hydrogen atoms, are inside the map.

## 9.5 Map-model fit summary [i](#)

The table lists the average atom inclusion at the recommended contour level (0.04) and Q-score for the entire model and for each chain.

Chain	Atom inclusion	Q-score
All	 0.6900	 0.5470
A	 0.7170	 0.5560
B	 0.7510	 0.5650
C	 0.3570	 0.5130
D	 0.3210	 0.5180
E	 0.4200	 0.4910
F	 0.5000	 0.5330
G	 0.3570	 0.4610
H	 0.6640	 0.5380
L	 0.5840	 0.5040

