



# Full wwPDB X-ray Structure Validation Report ⓘ

May 14, 2020 – 10:47 am BST

PDB ID : 2XBK  
Title : X-ray structure of the substrate-bound cytochrome P450 PimD - a polyene macrolide antibiotic pimaricin epoxidase  
Authors : Kells, P.M.; Ouellet, H.; Santos-Aberturas, J.; Aparicio, J.F.; Podust, L.M.  
Deposited on : 2010-04-12  
Resolution : 1.95 Å(reported)

This is a Full wwPDB X-ray Structure Validation Report for a publicly released PDB entry.

We welcome your comments at [validation@mail.wwpdb.org](mailto:validation@mail.wwpdb.org)

A user guide is available at

<https://www.wwpdb.org/validation/2017/XrayValidationReportHelp>

with specific help available everywhere you see the ⓘ symbol.

---

The following versions of software and data (see [references ⓘ](#)) were used in the production of this report:

MolProbity : 4.02b-467  
Mogul : 1.8.5 (274361), CSD as541be (2020)  
Xtriage (Phenix) : 1.13  
EDS : 2.11  
buster-report : 1.1.7 (2018)  
Percentile statistics : 20191225.v01 (using entries in the PDB archive December 25th 2019)  
Refmac : 5.8.0158  
CCP4 : 7.0.044 (Gargrove)  
Ideal geometry (proteins) : Engh & Huber (2001)  
Ideal geometry (DNA, RNA) : Parkinson et al. (1996)  
Validation Pipeline (wwPDB-VP) : 2.11

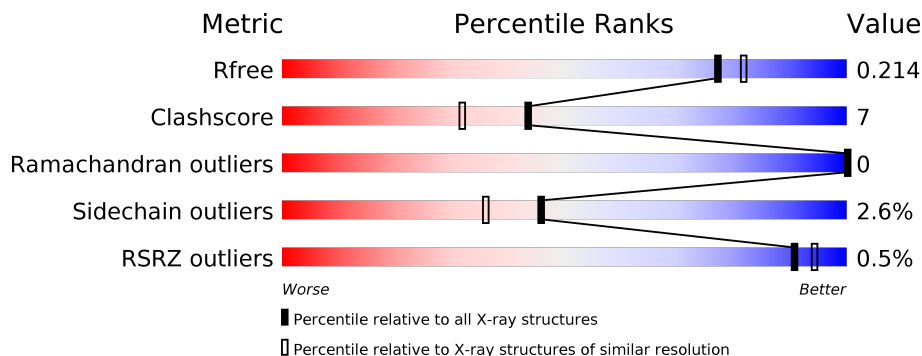
# 1 Overall quality at a glance

The following experimental techniques were used to determine the structure:

*X-RAY DIFFRACTION*

The reported resolution of this entry is 1.95 Å.

Percentile scores (ranging between 0-100) for global validation metrics of the entry are shown in the following graphic. The table shows the number of entries on which the scores are based.



Metric	Whole archive (#Entries)	Similar resolution (#Entries, resolution range(Å))
$R_{free}$	130704	2580 (1.96-1.96)
Clashscore	141614	2705 (1.96-1.96)
Ramachandran outliers	138981	2678 (1.96-1.96)
Sidechain outliers	138945	2678 (1.96-1.96)
RSRZ outliers	127900	2539 (1.96-1.96)

The table below summarises the geometric issues observed across the polymeric chains and their fit to the electron density. The red, orange, yellow and green segments on the lower bar indicate the fraction of residues that contain outliers for  $\geq 3$ , 2, 1 and 0 types of geometric quality criteria respectively. A grey segment represents the fraction of residues that are not modelled. The numeric value for each fraction is indicated below the corresponding segment, with a dot representing fractions  $\leq 5\%$ . The upper red bar (where present) indicates the fraction of residues that have poor fit to the electron density. The numeric value is given above the bar.

Mol	Chain	Length	Quality of chain
1	A	404	

## 2 Entry composition

There are 4 unique types of molecules in this entry. The entry contains 3508 atoms, of which 0 are hydrogens and 0 are deuteriums.

In the tables below, the ZeroOcc column contains the number of atoms modelled with zero occupancy, the AltConf column contains the number of residues with at least one atom in alternate conformation and the Trace column contains the number of residues modelled with at most 2 atoms.

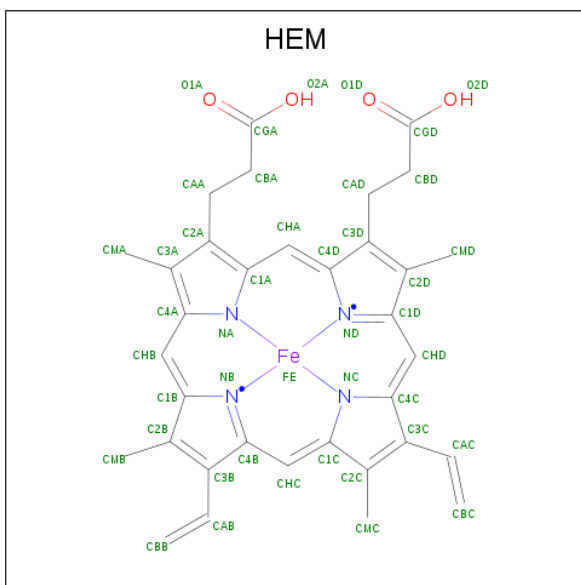
- Molecule 1 is a protein called PIMD PROTEIN.

Mol	Chain	Residues	Atoms					ZeroOcc	AltConf	Trace
			Total	C	N	O	S			
1	A	391	3147	1981	574	582	10	0	15	0

There are 11 discrepancies between the modelled and reference sequences:

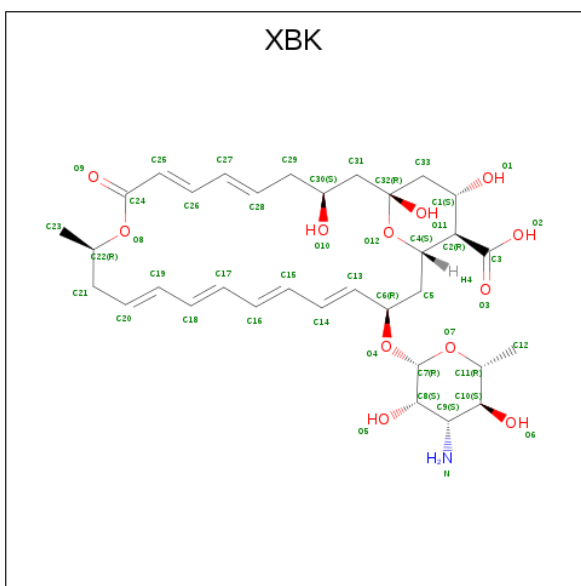
Chain	Residue	Modelled	Actual	Comment	Reference
A	-6	MET	-	expression tag	UNP Q9EW92
A	-5	ARG	-	expression tag	UNP Q9EW92
A	-4	GLY	-	expression tag	UNP Q9EW92
A	-3	SER	-	expression tag	UNP Q9EW92
A	-2	HIS	-	expression tag	UNP Q9EW92
A	-1	HIS	-	expression tag	UNP Q9EW92
A	0	HIS	-	expression tag	UNP Q9EW92
A	1	HIS	-	expression tag	UNP Q9EW92
A	2	HIS	-	expression tag	UNP Q9EW92
A	3	HIS	-	expression tag	UNP Q9EW92
A	4	GLY	-	expression tag	UNP Q9EW92

- Molecule 2 is PROTOPORPHYRIN IX CONTAINING FE (three-letter code: HEM) (formula:  $C_{34}H_{32}FeN_4O_4$ ).



Mol	Chain	Residues	Atoms				ZeroOcc	AltConf	
			Total	C	Fe	N			O
2	A	1	43	34	1	4	4	0	0

- Molecule 3 is 4,5-DE-EPOXYPIMARICIN (three-letter code: XBK) (formula:  $C_{33}H_{47}NO_{12}$ ).



Mol	Chain	Residues	Atoms				ZeroOcc	AltConf
			Total	C	N	O		
3	A	1	46	33	1	12	0	0


- Molecule 4 is water.

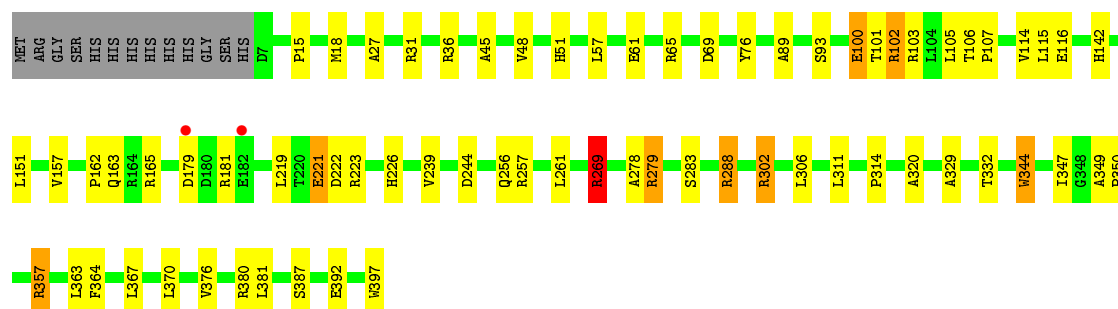
<b>Mol</b>	<b>Chain</b>	<b>Residues</b>	<b>Atoms</b>		<b>ZeroOcc</b>	<b>AltConf</b>
4	A	272	Total 272	O 272	0	0

### 3 Residue-property plots [i](#)

These plots are drawn for all protein, RNA and DNA chains in the entry. The first graphic for a chain summarises the proportions of the various outlier classes displayed in the second graphic. The second graphic shows the sequence view annotated by issues in geometry and electron density. Residues are color-coded according to the number of geometric quality criteria for which they contain at least one outlier: green = 0, yellow = 1, orange = 2 and red = 3 or more. A red dot above a residue indicates a poor fit to the electron density ( $RSRZ > 2$ ). Stretches of 2 or more consecutive residues without any outlier are shown as a green connector. Residues present in the sample, but not in the model, are shown in grey.

- Molecule 1: PIMD PROTEIN

Chain A:  79% 15%



## 4 Data and refinement statistics

Property	Value	Source
Space group	C 1 2 1	Depositor
Cell constants a, b, c, $\alpha$ , $\beta$ , $\gamma$	99.92Å 99.69Å 58.51Å 90.00° 111.92° 90.00°	Depositor
Resolution (Å)	67.88 – 1.95 17.01 – 1.95	Depositor EDS
% Data completeness (in resolution range)	99.8 (67.88-1.95) 99.9 (17.01-1.95)	Depositor EDS
$R_{merge}$	0.07	Depositor
$R_{sym}$	(Not available)	Depositor
$\langle I/\sigma(I) \rangle$ <sup>1</sup>	2.20 (at 1.96Å)	Xtrriage
Refinement program	REFMAC 5.5.0102	Depositor
R, $R_{free}$	0.150 , 0.214 0.151 , 0.214	Depositor DCC
$R_{free}$ test set	1912 reflections (4.95%)	wwPDB-VP
Wilson B-factor (Å <sup>2</sup> )	29.0	Xtrriage
Anisotropy	0.318	Xtrriage
Bulk solvent $k_{sol}$ (e/Å <sup>3</sup> ), $B_{sol}$ (Å <sup>2</sup> )	0.39 , 46.2	EDS
L-test for twinning <sup>2</sup>	$\langle  L  \rangle = 0.49$ , $\langle L^2 \rangle = 0.32$	Xtrriage
Estimated twinning fraction	No twinning to report.	Xtrriage
$F_o, F_c$ correlation	0.97	EDS
Total number of atoms	3508	wwPDB-VP
Average B, all atoms (Å <sup>2</sup> )	30.0	wwPDB-VP

Xtrriage's analysis on translational NCS is as follows: *The largest off-origin peak in the Patterson function is 5.43% of the height of the origin peak. No significant pseudotranslation is detected.*

<sup>1</sup>Intensities estimated from amplitudes.

<sup>2</sup>Theoretical values of  $\langle |L| \rangle$ ,  $\langle L^2 \rangle$  for acentric reflections are 0.5, 0.333 respectively for untwinned datasets, and 0.375, 0.2 for perfectly twinned datasets.

## 5 Model quality [i](#)

### 5.1 Standard geometry [i](#)

Bond lengths and bond angles in the following residue types are not validated in this section: HEM, XBK

The Z score for a bond length (or angle) is the number of standard deviations the observed value is removed from the expected value. A bond length (or angle) with  $|Z| > 5$  is considered an outlier worth inspection. RMSZ is the root-mean-square of all Z scores of the bond lengths (or angles).

Mol	Chain	Bond lengths		Bond angles	
		RMSZ	# Z  >5	RMSZ	# Z  >5
1	A	1.18	9/3213 (0.3%)	1.03	14/4367 (0.3%)

All (9) bond length outliers are listed below:

Mol	Chain	Res	Type	Atoms	Z	Observed(Å)	Ideal(Å)
1	A	221	GLU	CG-CD	7.66	1.63	1.51
1	A	157	VAL	CB-CG1	-6.00	1.40	1.52
1	A	221	GLU	CD-OE2	5.84	1.32	1.25
1	A	100	GLU	CG-CD	5.71	1.60	1.51
1	A	116	GLU	CG-CD	5.46	1.60	1.51
1	A	320	ALA	CA-CB	5.32	1.63	1.52
1	A	344	TRP	C-O	5.25	1.33	1.23
1	A	239	VAL	CB-CG1	5.15	1.63	1.52
1	A	357	ARG	CB-CG	-5.08	1.38	1.52

All (14) bond angle outliers are listed below:

Mol	Chain	Res	Type	Atoms	Z	Observed(°)	Ideal(°)
1	A	269	ARG	NE-CZ-NH2	-15.83	112.39	120.30
1	A	269	ARG	NE-CZ-NH1	9.38	124.99	120.30
1	A	302	ARG	NE-CZ-NH1	8.12	124.36	120.30
1	A	279[A]	ARG	NE-CZ-NH1	6.32	123.46	120.30
1	A	279[B]	ARG	NE-CZ-NH1	6.32	123.46	120.30
1	A	261	LEU	CB-CG-CD1	-6.04	100.73	111.00
1	A	288	ARG	CG-CD-NE	-5.86	99.49	111.80
1	A	302	ARG	NE-CZ-NH2	-5.75	117.43	120.30
1	A	115	LEU	CB-CG-CD2	-5.73	101.26	111.00
1	A	69	ASP	CB-CG-OD1	5.41	123.17	118.30
1	A	36	ARG	NE-CZ-NH2	-5.29	117.66	120.30
1	A	36	ARG	NE-CZ-NH1	5.19	122.90	120.30

*Continued on next page...*



Continued from previous page...

Mol	Chain	Res	Type	Atoms	Z	Observed(°)	Ideal(°)
1	A	102	ARG	NE-CZ-NH1	-5.12	117.74	120.30
1	A	311	LEU	CB-CG-CD2	5.05	119.59	111.00

There are no chirality outliers.

There are no planarity outliers.

## 5.2 Too-close contacts

In the following table, the Non-H and H(model) columns list the number of non-hydrogen atoms and hydrogen atoms in the chain respectively. The H(added) column lists the number of hydrogen atoms added and optimized by MolProbity. The Clashes column lists the number of clashes within the asymmetric unit, whereas Symm-Clashes lists symmetry related clashes.

Mol	Chain	Non-H	H(model)	H(added)	Clashes	Symm-Clashes
1	A	3147	0	3125	43	0
2	A	43	0	30	1	0
3	A	46	0	46	1	0
4	A	272	0	0	7	1
All	All	3508	0	3201	43	1

The all-atom clashscore is defined as the number of clashes found per 1000 atoms (including hydrogen atoms). The all-atom clashscore for this structure is 7.

All (43) close contacts within the same asymmetric unit are listed below, sorted by their clash magnitude.

Atom-1	Atom-2	Interatomic distance (Å)	Clash overlap (Å)
1:A:100:GLU:OE2	1:A:103[A]:ARG:NH2	1.79	1.15
1:A:100:GLU:OE1	1:A:103[B]:ARG:NH1	1.86	1.09
1:A:27:ALA:O	1:A:31[B]:ARG:HG2	1.62	0.99
1:A:380:ARG:NH1	1:A:392[B]:GLU:OE1	2.04	0.90
1:A:142:HIS:HD2	1:A:244:ASP:OD2	1.68	0.76
1:A:48:VAL:HG21	1:A:57:LEU:HD12	1.71	0.71
1:A:162:PRO:HG2	1:A:163:GLN:NE2	2.05	0.70
1:A:151:LEU:HD23	1:A:165:ARG:HG3	1.73	0.70
1:A:15:PRO:HB3	1:A:381:LEU:HD22	1.75	0.69
1:A:279[B]:ARG:HH11	1:A:381:LEU:HD21	1.60	0.66
1:A:269:ARG:HD2	1:A:332:THR:OG1	1.96	0.65
1:A:106[B]:THR:HG23	1:A:107:PRO:HD3	1.79	0.64
1:A:18:MET:HE3	1:A:376:VAL:HG21	1.79	0.64
1:A:102:ARG:O	1:A:106[B]:THR:HG22	1.98	0.63

Continued on next page...

Continued from previous page...

Atom-1	Atom-2	Interatomic distance (Å)	Clash overlap (Å)
1:A:380:ARG:CZ	1:A:392[B]:GLU:OE1	2.47	0.63
1:A:179:ASP:HB3	4:A:2134:HOH:O	1.98	0.62
1:A:219:LEU:HD22	1:A:223[B]:ARG:HG2	1.83	0.61
1:A:105:LEU:HB3	1:A:347:ILE:HD13	1.86	0.57
1:A:89:ALA:HB1	1:A:93[A]:SER:OG	2.03	0.57
1:A:367:LEU:HD22	1:A:397:TRP:CD1	2.39	0.57
1:A:142:HIS:CD2	1:A:244:ASP:OD2	2.57	0.51
1:A:344:TRP:HB3	2:A:1398:HEM:O2A	2.11	0.50
1:A:357:ARG:CG	4:A:2250:HOH:O	2.59	0.49
1:A:114:VAL:HG21	1:A:350:PRO:HB2	1.95	0.49
1:A:76:TYR:OH	4:A:2069:HOH:O	2.17	0.49
1:A:357:ARG:HG3	4:A:2250:HOH:O	2.14	0.48
1:A:162:PRO:HG2	1:A:163:GLN:HE21	1.74	0.47
1:A:256:GLN:HE21	1:A:329:ALA:H	1.60	0.47
1:A:279[B]:ARG:HD2	1:A:279[B]:ARG:HA	1.70	0.46
1:A:363:LEU:HD22	1:A:370:LEU:HD22	1.97	0.46
1:A:221:GLU:HG2	4:A:2161:HOH:O	2.15	0.45
1:A:45:ALA:HB2	1:A:306:LEU:HD23	1.99	0.45
1:A:100:GLU:OE2	1:A:103[A]:ARG:CZ	2.57	0.44
1:A:101:THR:OG1	1:A:223[B]:ARG:NH1	2.51	0.44
1:A:283:SER:HA	3:A:1399:XBK:H5	1.99	0.43
1:A:256:GLN:NE2	1:A:329:ALA:H	2.16	0.43
1:A:257:ARG:HD2	1:A:364:PHE:CD1	2.54	0.43
1:A:226:HIS:HE1	4:A:2163:HOH:O	2.01	0.43
1:A:51:HIS:HA	1:A:314:PRO:HB3	2.01	0.42
1:A:278:ALA:O	1:A:279[B]:ARG:HD2	2.18	0.42
1:A:269:ARG:CD	1:A:332:THR:OG1	2.67	0.41
1:A:221:GLU:HG3	4:A:2141:HOH:O	2.20	0.41
1:A:349:ALA:N	1:A:350:PRO:CD	2.84	0.40

All (1) symmetry-related close contacts are listed below. The label for Atom-2 includes the symmetry operator and encoded unit-cell translations to be applied.

Atom-1	Atom-2	Interatomic distance (Å)	Clash overlap (Å)
4:A:2043:HOH:O	4:A:2209:HOH:O[2_655]	2.17	0.03

## 5.3 Torsion angles [i](#)

### 5.3.1 Protein backbone [i](#)

In the following table, the Percentiles column shows the percent Ramachandran outliers of the chain as a percentile score with respect to all X-ray entries followed by that with respect to entries of similar resolution.

The Analysed column shows the number of residues for which the backbone conformation was analysed, and the total number of residues.

Mol	Chain	Analysed	Favoured	Allowed	Outliers	Percentiles
1	A	404/404 (100%)	396 (98%)	8 (2%)	0	100 100

There are no Ramachandran outliers to report.

### 5.3.2 Protein sidechains [i](#)

In the following table, the Percentiles column shows the percent sidechain outliers of the chain as a percentile score with respect to all X-ray entries followed by that with respect to entries of similar resolution.

The Analysed column shows the number of residues for which the sidechain conformation was analysed, and the total number of residues.

Mol	Chain	Analysed	Rotameric	Outliers	Percentiles
1	A	326/328 (99%)	317 (97%)	9 (3%)	43 33

All (9) residues with a non-rotameric sidechain are listed below:

Mol	Chain	Res	Type
1	A	61	GLU
1	A	65[A]	ARG
1	A	65[B]	ARG
1	A	181	ARG
1	A	222	ASP
1	A	269	ARG
1	A	288	ARG
1	A	302	ARG
1	A	387	SER

Some sidechains can be flipped to improve hydrogen bonding and reduce clashes. All (3) such sidechains are listed below:

Mol	Chain	Res	Type
1	A	142	HIS
1	A	163	GLN
1	A	256	GLN

### 5.3.3 RNA [i](#)

There are no RNA molecules in this entry.

### 5.4 Non-standard residues in protein, DNA, RNA chains [i](#)

There are no non-standard protein/DNA/RNA residues in this entry.

### 5.5 Carbohydrates [i](#)

There are no carbohydrates in this entry.

### 5.6 Ligand geometry [i](#)

2 ligands are modelled in this entry.

In the following table, the Counts columns list the number of bonds (or angles) for which Mogul statistics could be retrieved, the number of bonds (or angles) that are observed in the model and the number of bonds (or angles) that are defined in the Chemical Component Dictionary. The Link column lists molecule types, if any, to which the group is linked. The Z score for a bond length (or angle) is the number of standard deviations the observed value is removed from the expected value. A bond length (or angle) with  $|Z| > 2$  is considered an outlier worth inspection. RMSZ is the root-mean-square of all Z scores of the bond lengths (or angles).

Mol	Type	Chain	Res	Link	Bond lengths			Bond angles		
					Counts	RMSZ	# Z  > 2	Counts	RMSZ	# Z  > 2
3	XBK	A	1399	-	43,48,48	1.57	5 (11%)	49,66,66	2.24	16 (32%)
2	HEM	A	1398	1	27,50,50	2.34	10 (37%)	17,82,82	2.61	8 (47%)

In the following table, the Chirals column lists the number of chiral outliers, the number of chiral centers analysed, the number of these observed in the model and the number defined in the Chemical Component Dictionary. Similar counts are reported in the Torsion and Rings columns. '-' means no outliers of that kind were identified.

Mol	Type	Chain	Res	Link	Chirals	Torsions	Rings
3	XBK	A	1399	-	-	9/37/79/79	0/2/3/3
2	HEM	A	1398	1	-	0/6/54/54	-

All (15) bond length outliers are listed below:

Mol	Chain	Res	Type	Atoms	Z	Observed(Å)	Ideal(Å)
3	A	1399	XBK	C21-C22	7.28	1.58	1.52
2	A	1398	HEM	C3C-C2C	-5.25	1.33	1.40
2	A	1398	HEM	C3B-C2B	-4.55	1.34	1.40
2	A	1398	HEM	C3D-C2D	4.42	1.50	1.37
2	A	1398	HEM	C3B-CAB	3.72	1.55	1.47
2	A	1398	HEM	C3C-CAC	3.45	1.54	1.47
2	A	1398	HEM	CMA-C3A	3.19	1.58	1.51
2	A	1398	HEM	CMD-C2D	3.01	1.57	1.51
3	A	1399	XBK	O11-C32	2.99	1.44	1.40
2	A	1398	HEM	C1D-ND	2.73	1.41	1.36
2	A	1398	HEM	C1A-NA	2.56	1.41	1.36
3	A	1399	XBK	C9-N	-2.41	1.43	1.47
3	A	1399	XBK	O8-C24	2.22	1.39	1.34
3	A	1399	XBK	O8-C22	-2.16	1.43	1.47
2	A	1398	HEM	CMB-C2B	2.02	1.56	1.51

All (24) bond angle outliers are listed below:

Mol	Chain	Res	Type	Atoms	Z	Observed(°)	Ideal(°)
3	A	1399	XBK	C21-C20-C19	6.28	133.52	125.41
2	A	1398	HEM	C4C-C3C-C2C	5.36	110.64	106.90
3	A	1399	XBK	C7-O4-C6	-5.32	106.84	115.63
2	A	1398	HEM	CBD-CAD-C3D	-4.74	103.74	112.48
3	A	1399	XBK	C29-C28-C27	-4.74	119.29	125.41
3	A	1399	XBK	C22-O8-C24	-4.54	112.78	118.36
3	A	1399	XBK	O8-C22-C21	4.24	114.84	107.33
2	A	1398	HEM	CBA-CAA-C2A	-3.93	105.25	112.49
2	A	1398	HEM	C1D-C2D-C3D	-3.83	104.33	107.00
3	A	1399	XBK	O8-C24-O9	-3.40	117.81	123.35
3	A	1399	XBK	O12-C32-C33	3.19	112.73	108.92
3	A	1399	XBK	C23-C22-C21	3.11	117.59	113.26
3	A	1399	XBK	C8-C9-N	-2.80	105.32	111.05
3	A	1399	XBK	C17-C16-C15	-2.71	118.77	124.81
2	A	1398	HEM	CMB-C2B-C3B	2.64	129.62	124.68
3	A	1399	XBK	C22-C21-C20	2.56	118.65	113.92
2	A	1398	HEM	CAD-CBD-CGD	-2.53	108.42	112.67
3	A	1399	XBK	O7-C7-C8	2.37	115.37	110.35
2	A	1398	HEM	CMD-C2D-C3D	2.35	129.38	124.94
3	A	1399	XBK	O8-C22-C23	-2.29	102.69	107.93
3	A	1399	XBK	C14-C15-C16	-2.29	119.72	124.81
2	A	1398	HEM	CMC-C2C-C3C	2.17	128.73	124.68
3	A	1399	XBK	O10-C30-C31	2.11	114.10	108.68

*Continued on next page...*

*Continued from previous page...*

Mol	Chain	Res	Type	Atoms	Z	Observed(°)	Ideal(°)
3	A	1399	XBK	C15-C14-C13	-2.05	109.76	124.42

There are no chirality outliers.

All (9) torsion outliers are listed below:

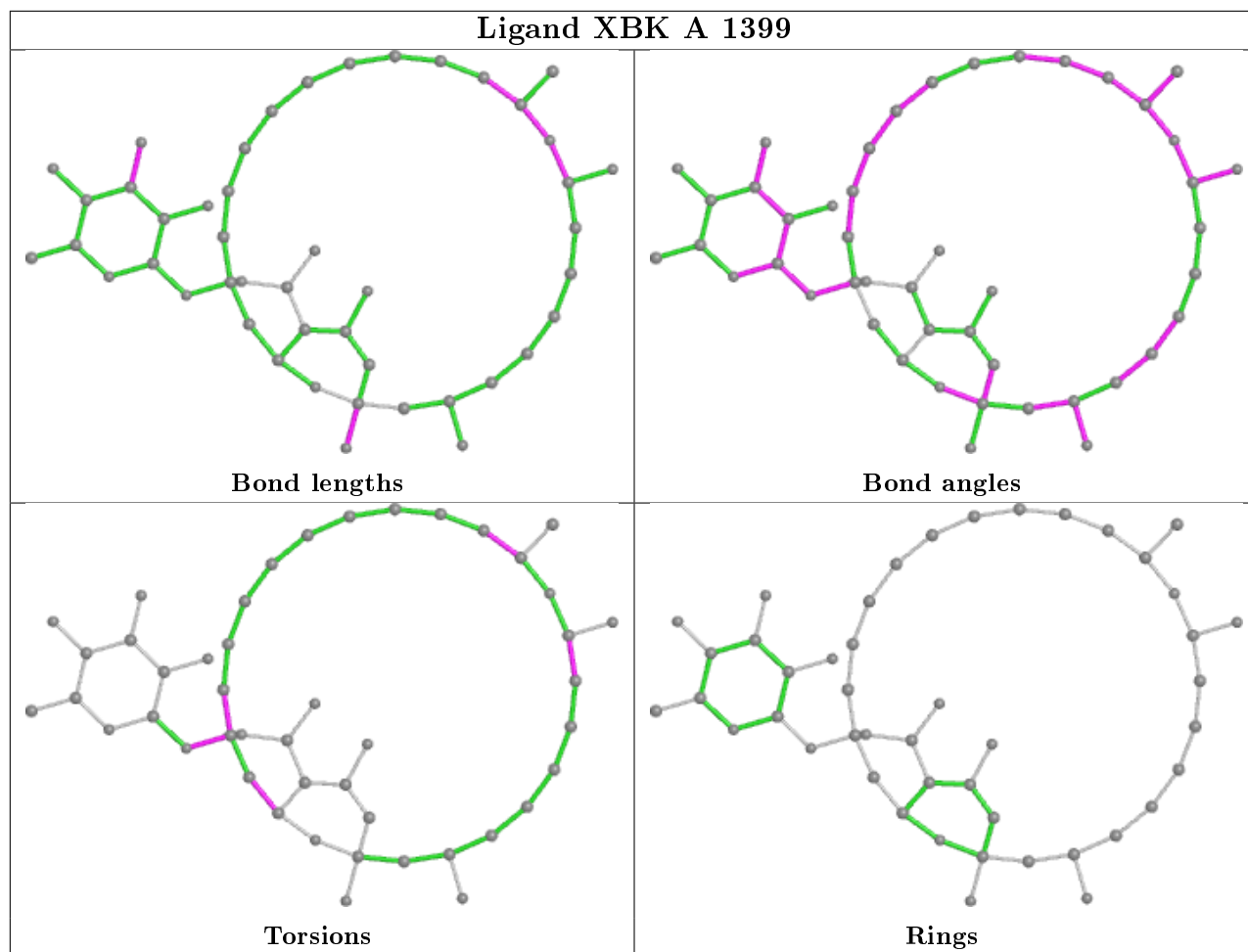
Mol	Chain	Res	Type	Atoms
3	A	1399	XBK	O12-C4-C5-C6
3	A	1399	XBK	C13-C6-O4-C7
3	A	1399	XBK	C20-C21-C22-O8
3	A	1399	XBK	C20-C21-C22-C23
3	A	1399	XBK	O8-C24-C25-C26
3	A	1399	XBK	O9-C24-C25-C26
3	A	1399	XBK	C14-C13-C6-O4
3	A	1399	XBK	C14-C13-C6-C5
3	A	1399	XBK	C2-C4-C5-C6

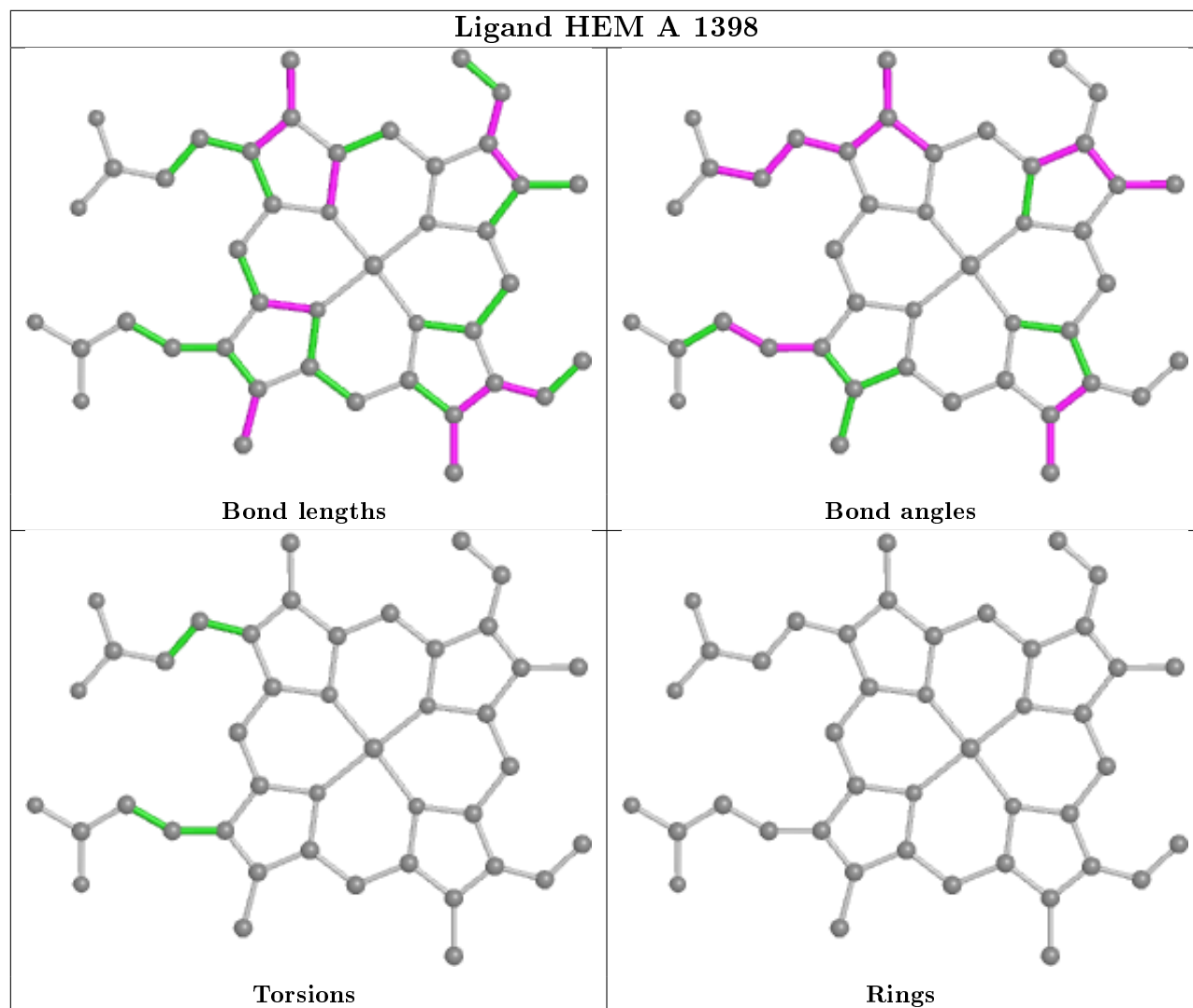
There are no ring outliers.

2 monomers are involved in 2 short contacts:

Mol	Chain	Res	Type	Clashes	Symm-Clashes
3	A	1399	XBK	1	0
2	A	1398	HEM	1	0

The following is a two-dimensional graphical depiction of Mogul quality analysis of bond lengths, bond angles, torsion angles, and ring geometry for all instances of the Ligand of Interest. In addition, ligands with molecular weight > 250 and outliers as shown on the validation Tables will also be included. For torsion angles, if less than 5% of the Mogul distribution of torsion angles is within 10 degrees of the torsion angle in question, then that torsion angle is considered an outlier. Any bond that is central to one or more torsion angles identified as an outlier by Mogul will be highlighted in the graph. For rings, the root-mean-square deviation (RMSD) between the ring in question and similar rings identified by Mogul is calculated over all ring torsion angles. If the average RMSD is greater than 60 degrees and the minimal RMSD between the ring in question and any Mogul-identified rings is also greater than 60 degrees, then that ring is considered an outlier. The outliers are highlighted in purple. The color gray indicates Mogul did not find sufficient equivalents in the CSD to analyse the geometry.





## 5.7 Other polymers [i](#)

There are no such residues in this entry.

## 5.8 Polymer linkage issues [i](#)

There are no chain breaks in this entry.



## 6 Fit of model and data [i](#)

### 6.1 Protein, DNA and RNA chains [i](#)

In the following table, the column labelled ‘#RSRZ> 2’ contains the number (and percentage) of RSRZ outliers, followed by percent RSRZ outliers for the chain as percentile scores relative to all X-ray entries and entries of similar resolution. The OWAB column contains the minimum, median, 95<sup>th</sup> percentile and maximum values of the occupancy-weighted average B-factor per residue. The column labelled ‘Q< 0.9’ lists the number of (and percentage) of residues with an average occupancy less than 0.9.

Mol	Chain	Analysed	<RSRZ>	#RSRZ>2	OWAB(Å <sup>2</sup> )	Q<0.9
1	A	391/404 (96%)	-0.36	2 (0%) 91 94	15, 29, 45, 56	0

All (2) RSRZ outliers are listed below:

Mol	Chain	Res	Type	RSRZ
1	A	179	ASP	3.3
1	A	182	GLU	2.1

### 6.2 Non-standard residues in protein, DNA, RNA chains [i](#)

There are no non-standard protein/DNA/RNA residues in this entry.

### 6.3 Carbohydrates [i](#)

There are no carbohydrates in this entry.

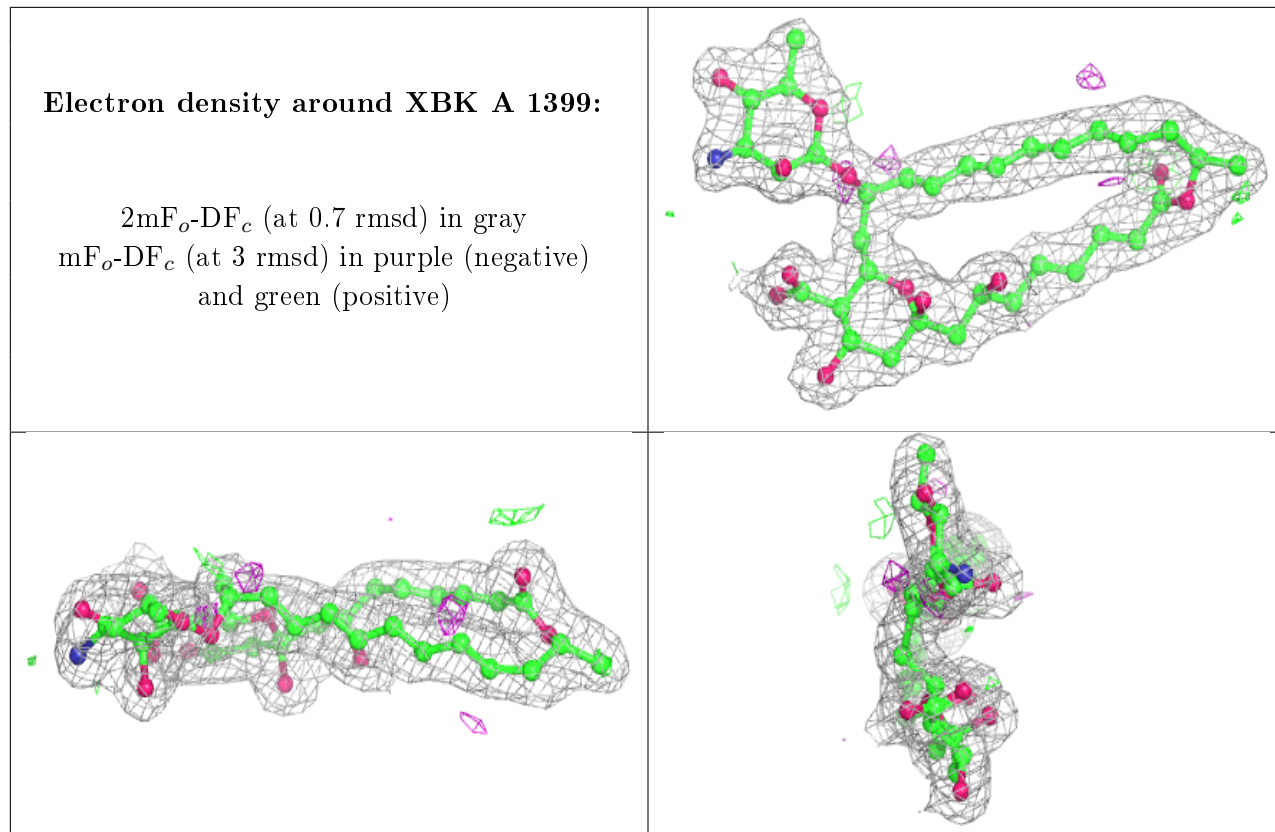
### 6.4 Ligands [i](#)

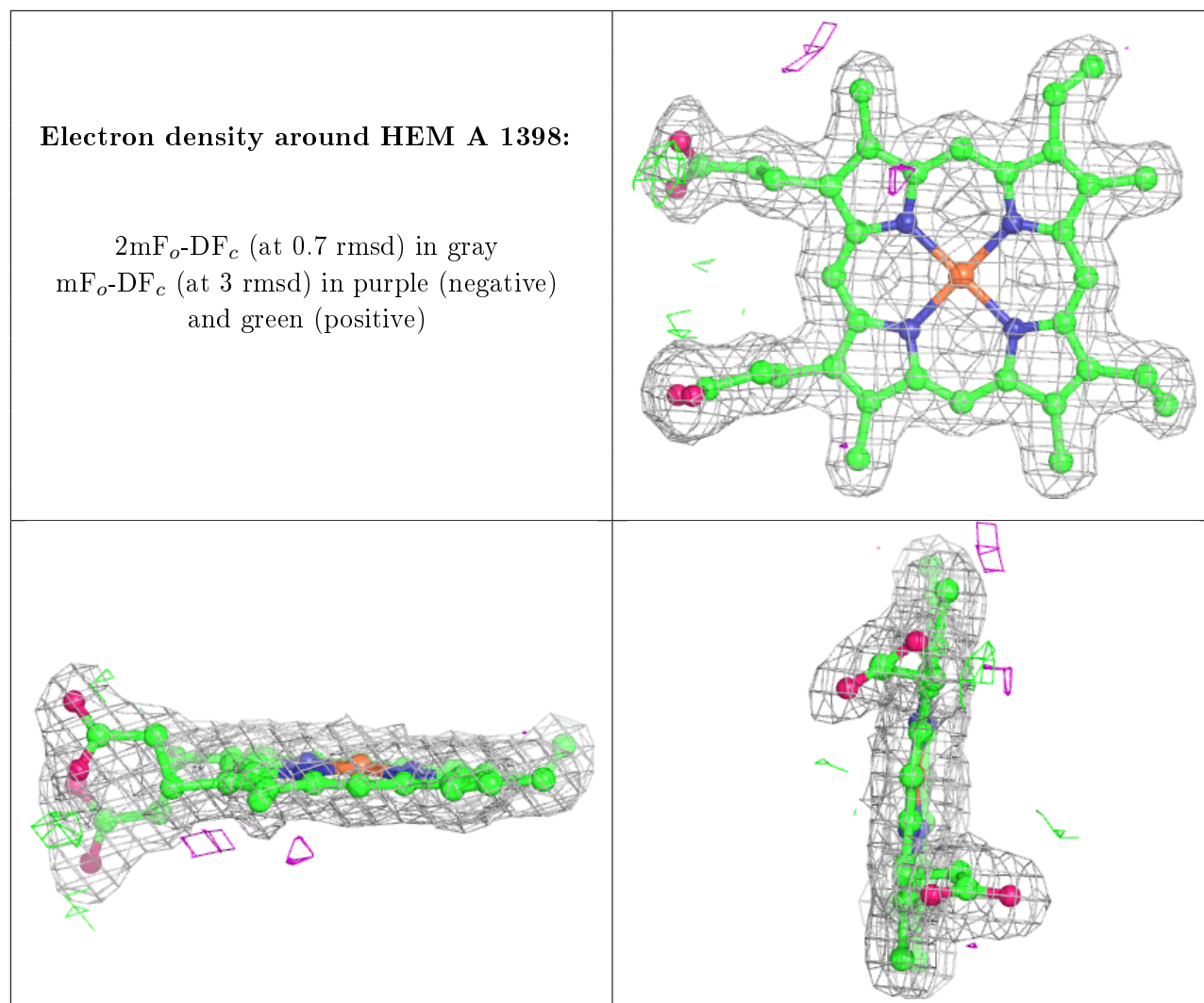
In the following table, the Atoms column lists the number of modelled atoms in the group and the number defined in the chemical component dictionary. The B-factors column lists the minimum, median, 95<sup>th</sup> percentile and maximum values of B factors of atoms in the group. The column labelled ‘Q< 0.9’ lists the number of atoms with occupancy less than 0.9.

Mol	Type	Chain	Res	Atoms	RSCC	RSR	B-factors(Å <sup>2</sup> )	Q<0.9
3	XBK	A	1399	46/46	0.97	0.07	19,26,39,42	0
2	HEM	A	1398	43/43	0.99	0.07	12,16,29,39	0

The following is a graphical depiction of the model fit to experimental electron density of all instances of the Ligand of Interest. In addition, ligands with molecular weight > 250 and outliers as shown on the geometry validation Tables will also be included. Each fit is shown from different

orientation to approximate a three-dimensional view.





## 6.5 Other polymers [i](#)

There are no such residues in this entry.