



wwPDB X-ray Structure Validation Summary Report ⓘ

Nov 22, 2023 – 06:21 PM JST

PDB ID : 7XCN
Title : Crystal structure of the MttB-MttC complex at 2.7 Å resolution
Authors : Li, J.; Chan, M.K.
Deposited on : 2022-03-24
Resolution : 2.70 Å (reported)

This is a wwPDB X-ray Structure Validation Summary Report for a publicly released PDB entry.

We welcome your comments at validation@mail.wwpdb.org

A user guide is available at

<https://www.wwpdb.org/validation/2017/XrayValidationReportHelp>

with specific help available everywhere you see the ⓘ symbol.

The types of validation reports are described at

<http://www.wwpdb.org/validation/2017/FAQs#types>.

The following versions of software and data (see [references ⓘ](#)) were used in the production of this report:

MolProbity : 4.02b-467
Mogul : 1.8.5 (274361), CSD as541be (2020)
Xtriage (Phenix) : 1.13
EDS : 2.36
buster-report : 1.1.7 (2018)
Percentile statistics : 20191225.v01 (using entries in the PDB archive December 25th 2019)
Refmac : 5.8.0158
CCP4 : 7.0.044 (Gargrove)
Ideal geometry (proteins) : Engh & Huber (2001)
Ideal geometry (DNA, RNA) : Parkinson et al. (1996)
Validation Pipeline (wwPDB-VP) : 2.36

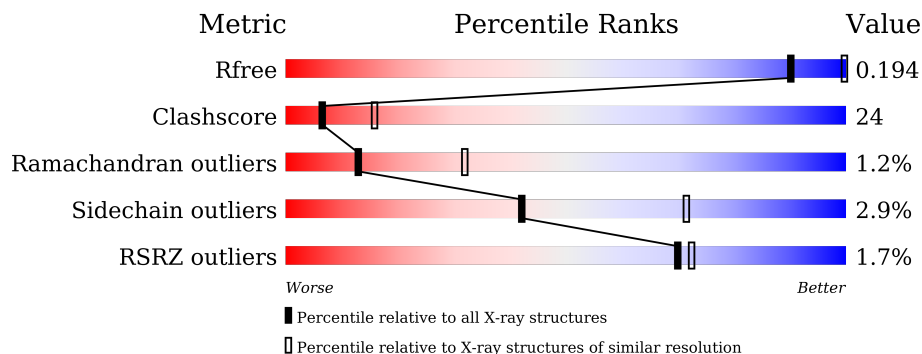
1 Overall quality at a glance

The following experimental techniques were used to determine the structure:

X-RAY DIFFRACTION

The reported resolution of this entry is 2.70 Å.

Percentile scores (ranging between 0-100) for global validation metrics of the entry are shown in the following graphic. The table shows the number of entries on which the scores are based.



Metric	Whole archive (#Entries)	Similar resolution (#Entries, resolution range(Å))
R_{free}	130704	2808 (2.70-2.70)
Clashscore	141614	3122 (2.70-2.70)
Ramachandran outliers	138981	3069 (2.70-2.70)
Sidechain outliers	138945	3069 (2.70-2.70)
RSRZ outliers	127900	2737 (2.70-2.70)

The table below summarises the geometric issues observed across the polymeric chains and their fit to the electron density. The red, orange, yellow and green segments of the lower bar indicate the fraction of residues that contain outliers for ≥ 3 , 2, 1 and 0 types of geometric quality criteria respectively. A grey segment represents the fraction of residues that are not modelled. The numeric value for each fraction is indicated below the corresponding segment, with a dot representing fractions $\leq 5\%$. The upper red bar (where present) indicates the fraction of residues that have poor fit to the electron density. The numeric value is given above the bar.

Mol	Chain	Length	Quality of chain
1	A	503	
1	B	503	
1	C	503	
1	D	503	
1	E	503	
1	F	503	

Continued on next page...

Continued from previous page...

Mol	Chain	Length	Quality of chain
2	M	224	<p>%</p> <p>48% 44%</p>
2	N	224	<p>%</p> <p>42% 49% 5%</p>
2	O	224	<p>4%</p> <p>51% 40%</p>
2	P	224	<p>2%</p> <p>52% 41%</p>
2	Q	224	<p>8%</p> <p>33% 52% 9% 6%</p>
2	R	224	<p>2%</p> <p>50% 42%</p>

2 Entry composition [i](#)

There are 5 unique types of molecules in this entry. The entry contains 33443 atoms, of which 0 are hydrogens and 0 are deuteriums.

In the tables below, the ZeroOcc column contains the number of atoms modelled with zero occupancy, the AltConf column contains the number of residues with at least one atom in alternate conformation and the Trace column contains the number of residues modelled with at most 2 atoms.

- Molecule 1 is a protein called Trimethylamine methyltransferase.

Mol	Chain	Residues	Atoms					ZeroOcc	AltConf	Trace
			Total	C	N	O	S			
1	A	491	3801	2424	633	722	22	0	5	0
1	B	494	3843	2446	641	734	22	0	8	0
1	C	494	3843	2446	641	734	22	0	8	0
1	D	491	3801	2424	633	722	22	0	5	0
1	E	494	3843	2446	641	734	22	0	8	0
1	F	494	3843	2446	641	734	22	0	8	0

There are 48 discrepancies between the modelled and reference sequences:

Chain	Residue	Modelled	Actual	Comment	Reference
A	496	GLY	-	expression tag	UNP A0A0E3QRM4
A	497	GLY	-	expression tag	UNP A0A0E3QRM4
A	498	HIS	-	expression tag	UNP A0A0E3QRM4
A	499	HIS	-	expression tag	UNP A0A0E3QRM4
A	500	HIS	-	expression tag	UNP A0A0E3QRM4
A	501	HIS	-	expression tag	UNP A0A0E3QRM4
A	502	HIS	-	expression tag	UNP A0A0E3QRM4
A	503	HIS	-	expression tag	UNP A0A0E3QRM4
B	496	GLY	-	expression tag	UNP A0A0E3QRM4
B	497	GLY	-	expression tag	UNP A0A0E3QRM4
B	498	HIS	-	expression tag	UNP A0A0E3QRM4
B	499	HIS	-	expression tag	UNP A0A0E3QRM4
B	500	HIS	-	expression tag	UNP A0A0E3QRM4
B	501	HIS	-	expression tag	UNP A0A0E3QRM4
B	502	HIS	-	expression tag	UNP A0A0E3QRM4
B	503	HIS	-	expression tag	UNP A0A0E3QRM4
C	496	GLY	-	expression tag	UNP A0A0E3QRM4

Continued on next page...

Continued from previous page...

Chain	Residue	Modelled	Actual	Comment	Reference
C	497	GLY	-	expression tag	UNP A0A0E3QRM4
C	498	HIS	-	expression tag	UNP A0A0E3QRM4
C	499	HIS	-	expression tag	UNP A0A0E3QRM4
C	500	HIS	-	expression tag	UNP A0A0E3QRM4
C	501	HIS	-	expression tag	UNP A0A0E3QRM4
C	502	HIS	-	expression tag	UNP A0A0E3QRM4
C	503	HIS	-	expression tag	UNP A0A0E3QRM4
D	496	GLY	-	expression tag	UNP A0A0E3QRM4
D	497	GLY	-	expression tag	UNP A0A0E3QRM4
D	498	HIS	-	expression tag	UNP A0A0E3QRM4
D	499	HIS	-	expression tag	UNP A0A0E3QRM4
D	500	HIS	-	expression tag	UNP A0A0E3QRM4
D	501	HIS	-	expression tag	UNP A0A0E3QRM4
D	502	HIS	-	expression tag	UNP A0A0E3QRM4
D	503	HIS	-	expression tag	UNP A0A0E3QRM4
E	496	GLY	-	expression tag	UNP A0A0E3QRM4
E	497	GLY	-	expression tag	UNP A0A0E3QRM4
E	498	HIS	-	expression tag	UNP A0A0E3QRM4
E	499	HIS	-	expression tag	UNP A0A0E3QRM4
E	500	HIS	-	expression tag	UNP A0A0E3QRM4
E	501	HIS	-	expression tag	UNP A0A0E3QRM4
E	502	HIS	-	expression tag	UNP A0A0E3QRM4
E	503	HIS	-	expression tag	UNP A0A0E3QRM4
F	496	GLY	-	expression tag	UNP A0A0E3QRM4
F	497	GLY	-	expression tag	UNP A0A0E3QRM4
F	498	HIS	-	expression tag	UNP A0A0E3QRM4
F	499	HIS	-	expression tag	UNP A0A0E3QRM4
F	500	HIS	-	expression tag	UNP A0A0E3QRM4
F	501	HIS	-	expression tag	UNP A0A0E3QRM4
F	502	HIS	-	expression tag	UNP A0A0E3QRM4
F	503	HIS	-	expression tag	UNP A0A0E3QRM4

- Molecule 2 is a protein called Trimethylamine methyltransferase corrinoid protein.

Mol	Chain	Residues	Atoms					ZeroOcc	AltConf	Trace
2	M	214	Total	C	N	O	S	0	0	0
			1595	1002	263	323	7			
2	N	212	Total	C	N	O	S	0	0	0
			1576	992	259	318	7			
2	O	214	Total	C	N	O	S	0	0	0
			1595	1002	263	323	7			
2	P	215	Total	C	N	O	S	0	0	0
			1600	1005	264	324	7			

Continued on next page...

Continued from previous page...

Mol	Chain	Residues	Atoms					ZeroOcc	AltConf	Trace
2	Q	211	Total	C	N	O	S	0	0	0
			1571	989	258	317	7			
2	R	214	Total	C	N	O	S	0	0	0
			1595	1002	263	323	7			

There are 42 discrepancies between the modelled and reference sequences:

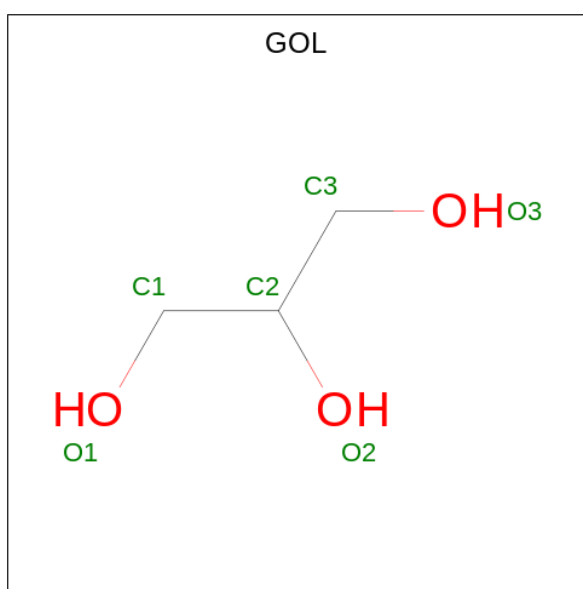
Chain	Residue	Modelled	Actual	Comment	Reference
M	218	GLY	-	expression tag	UNP A0A0E3QQC8
M	219	GLY	-	expression tag	UNP A0A0E3QQC8
M	220	HIS	-	expression tag	UNP A0A0E3QQC8
M	221	HIS	-	expression tag	UNP A0A0E3QQC8
M	222	HIS	-	expression tag	UNP A0A0E3QQC8
M	223	HIS	-	expression tag	UNP A0A0E3QQC8
M	224	HIS	-	expression tag	UNP A0A0E3QQC8
N	218	GLY	-	expression tag	UNP A0A0E3QQC8
N	219	GLY	-	expression tag	UNP A0A0E3QQC8
N	220	HIS	-	expression tag	UNP A0A0E3QQC8
N	221	HIS	-	expression tag	UNP A0A0E3QQC8
N	222	HIS	-	expression tag	UNP A0A0E3QQC8
N	223	HIS	-	expression tag	UNP A0A0E3QQC8
N	224	HIS	-	expression tag	UNP A0A0E3QQC8
O	218	GLY	-	expression tag	UNP A0A0E3QQC8
O	219	GLY	-	expression tag	UNP A0A0E3QQC8
O	220	HIS	-	expression tag	UNP A0A0E3QQC8
O	221	HIS	-	expression tag	UNP A0A0E3QQC8
O	222	HIS	-	expression tag	UNP A0A0E3QQC8
O	223	HIS	-	expression tag	UNP A0A0E3QQC8
O	224	HIS	-	expression tag	UNP A0A0E3QQC8
P	218	GLY	-	expression tag	UNP A0A0E3QQC8
P	219	GLY	-	expression tag	UNP A0A0E3QQC8
P	220	HIS	-	expression tag	UNP A0A0E3QQC8
P	221	HIS	-	expression tag	UNP A0A0E3QQC8
P	222	HIS	-	expression tag	UNP A0A0E3QQC8
P	223	HIS	-	expression tag	UNP A0A0E3QQC8
P	224	HIS	-	expression tag	UNP A0A0E3QQC8
Q	218	GLY	-	expression tag	UNP A0A0E3QQC8
Q	219	GLY	-	expression tag	UNP A0A0E3QQC8
Q	220	HIS	-	expression tag	UNP A0A0E3QQC8
Q	221	HIS	-	expression tag	UNP A0A0E3QQC8
Q	222	HIS	-	expression tag	UNP A0A0E3QQC8
Q	223	HIS	-	expression tag	UNP A0A0E3QQC8

Continued on next page...

Continued from previous page...

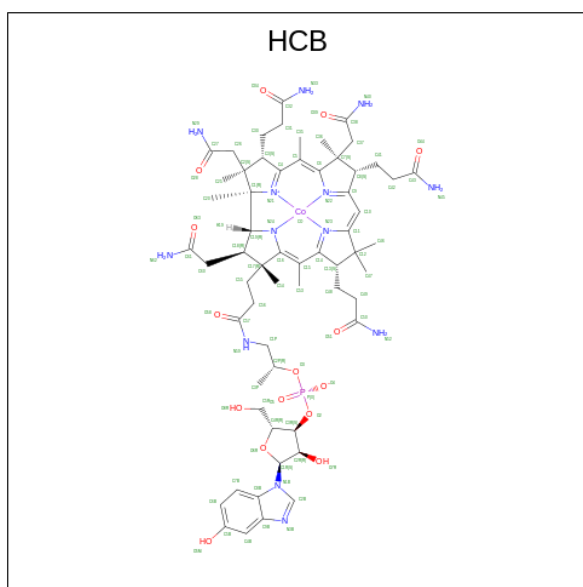
Chain	Residue	Modelled	Actual	Comment	Reference
Q	224	HIS	-	expression tag	UNP A0A0E3QQC8
R	218	GLY	-	expression tag	UNP A0A0E3QQC8
R	219	GLY	-	expression tag	UNP A0A0E3QQC8
R	220	HIS	-	expression tag	UNP A0A0E3QQC8
R	221	HIS	-	expression tag	UNP A0A0E3QQC8
R	222	HIS	-	expression tag	UNP A0A0E3QQC8
R	223	HIS	-	expression tag	UNP A0A0E3QQC8
R	224	HIS	-	expression tag	UNP A0A0E3QQC8

- Molecule 3 is GLYCEROL (three-letter code: GOL) (formula: C₃H₈O₃).



Mol	Chain	Residues	Atoms	ZeroOcc	AltConf
3	A	1	Total C O 6 3 3	0	0
3	C	1	Total C O 6 3 3	0	0
3	E	1	Total C O 6 3 3	0	0
3	F	1	Total C O 6 3 3	0	0

- Molecule 4 is 5-HYDROXYBENZIMIDAZOLYLCOBAMIDE (three-letter code: HCB) (formula: C₆₀H₈₄CoN₁₃O₁₅P).



Mol	Chain	Residues	Atoms					ZeroOcc	AltConf	
			Total	C	Co	N	O			P
4	M	1	Total 90	C 60	Co 1	N 13	O 15	P 1	0	0
4	N	1	Total 90	C 60	Co 1	N 13	O 15	P 1	0	0
4	O	1	Total 90	C 60	Co 1	N 13	O 15	P 1	0	0
4	P	1	Total 90	C 60	Co 1	N 13	O 15	P 1	0	0
4	Q	1	Total 90	C 60	Co 1	N 13	O 15	P 1	0	0
4	R	1	Total 90	C 60	Co 1	N 13	O 15	P 1	0	0

- Molecule 5 is water.

Mol	Chain	Residues	Atoms		ZeroOcc	AltConf
5	A	44	Total 44	O 44	0	0
5	B	63	Total 63	O 63	0	0
5	C	47	Total 47	O 47	0	0
5	D	62	Total 62	O 62	0	0
5	E	66	Total 66	O 66	0	0
5	F	47	Total 47	O 47	0	0

Continued on next page...

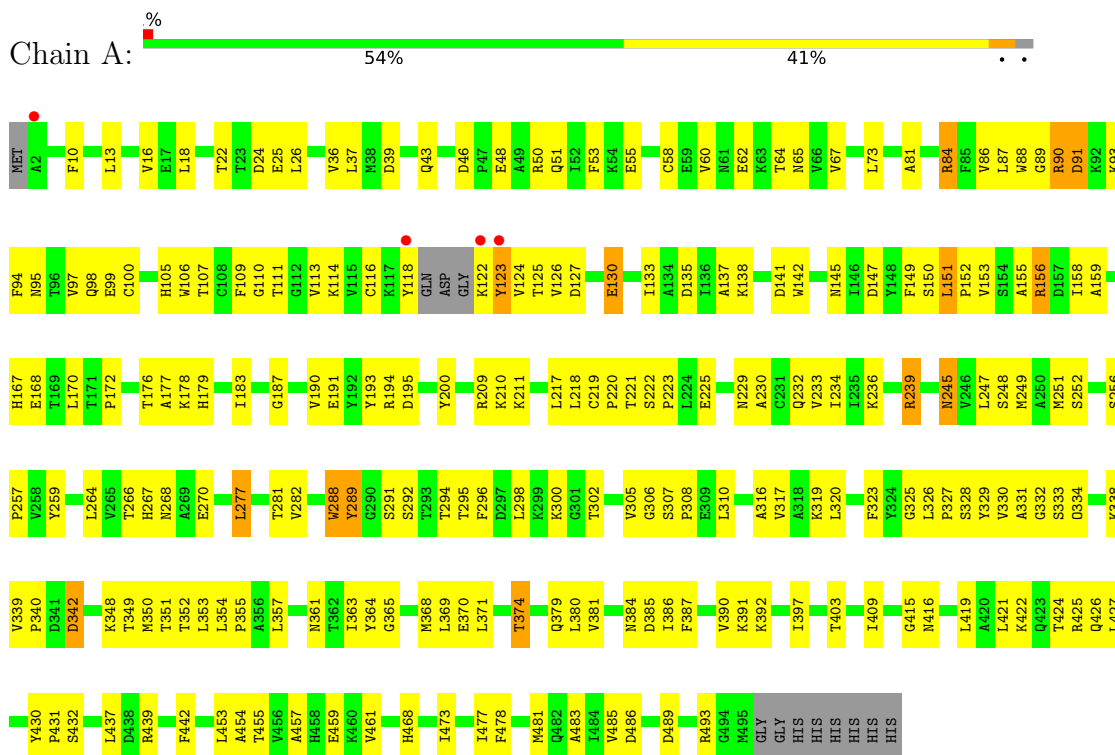
Continued from previous page...

Mol	Chain	Residues	Atoms	ZeroOcc	AltConf
5	M	5	Total O 5 5	0	0
5	N	13	Total O 13 13	0	0
5	O	5	Total O 5 5	0	0
5	P	6	Total O 6 6	0	0
5	Q	11	Total O 11 11	0	0
5	R	4	Total O 4 4	0	0

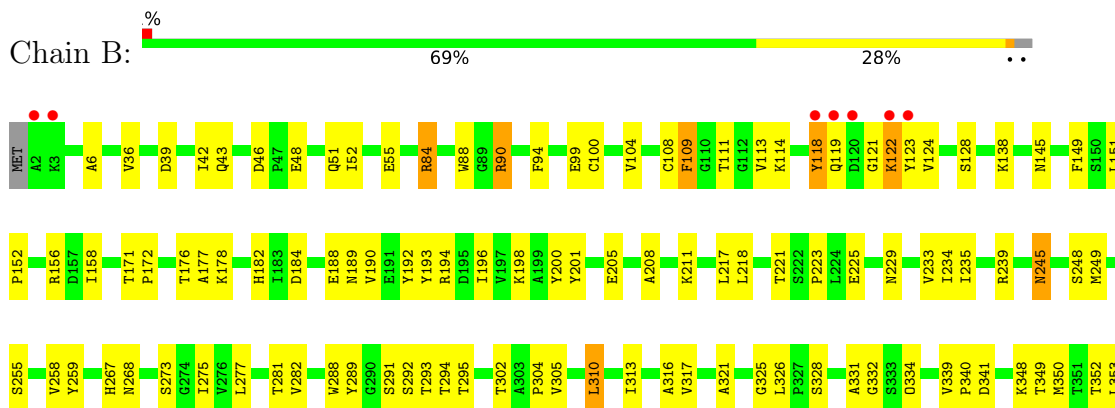
3 Residue-property plots i

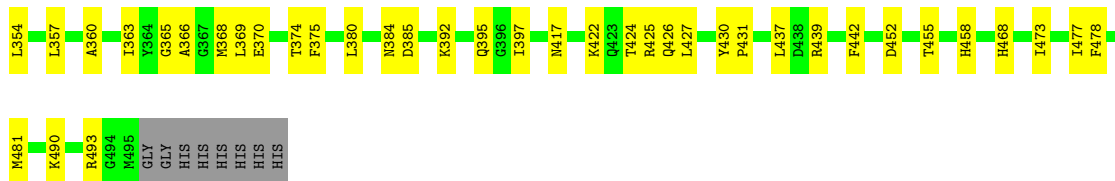
These plots are drawn for all protein, RNA, DNA and oligosaccharide chains in the entry. The first graphic for a chain summarises the proportions of the various outlier classes displayed in the second graphic. The second graphic shows the sequence view annotated by issues in geometry and electron density. Residues are color-coded according to the number of geometric quality criteria for which they contain at least one outlier: green = 0, yellow = 1, orange = 2 and red = 3 or more. A red dot above a residue indicates a poor fit to the electron density ($RSRZ > 2$). Stretches of 2 or more consecutive residues without any outlier are shown as a green connector. Residues present in the sample, but not in the model, are shown in grey.

- Molecule 1: Trimethylamine methyltransferase

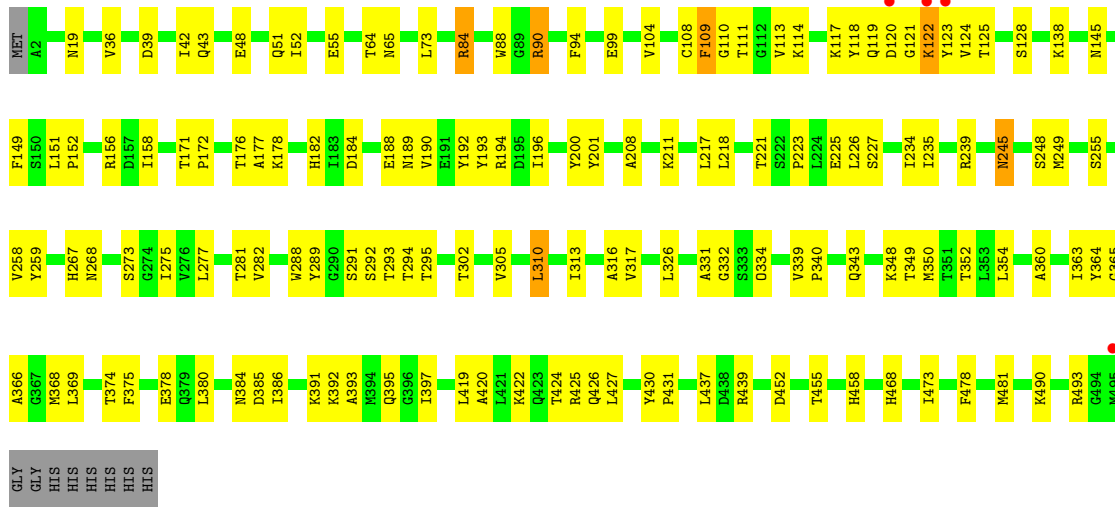


- Molecule 1: Trimethylamine methyltransferase

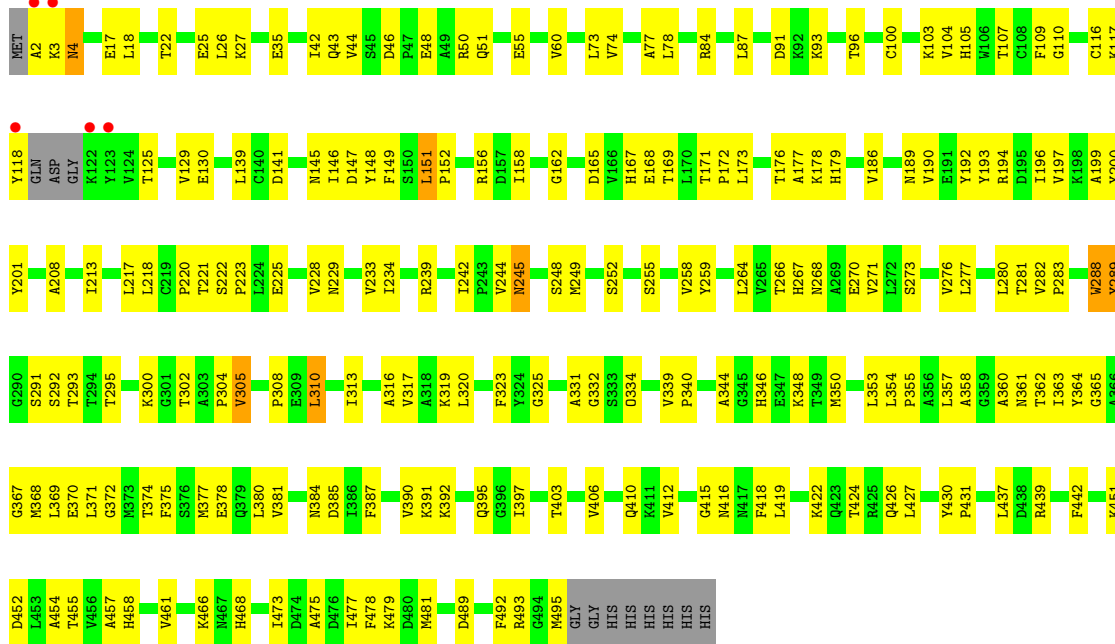




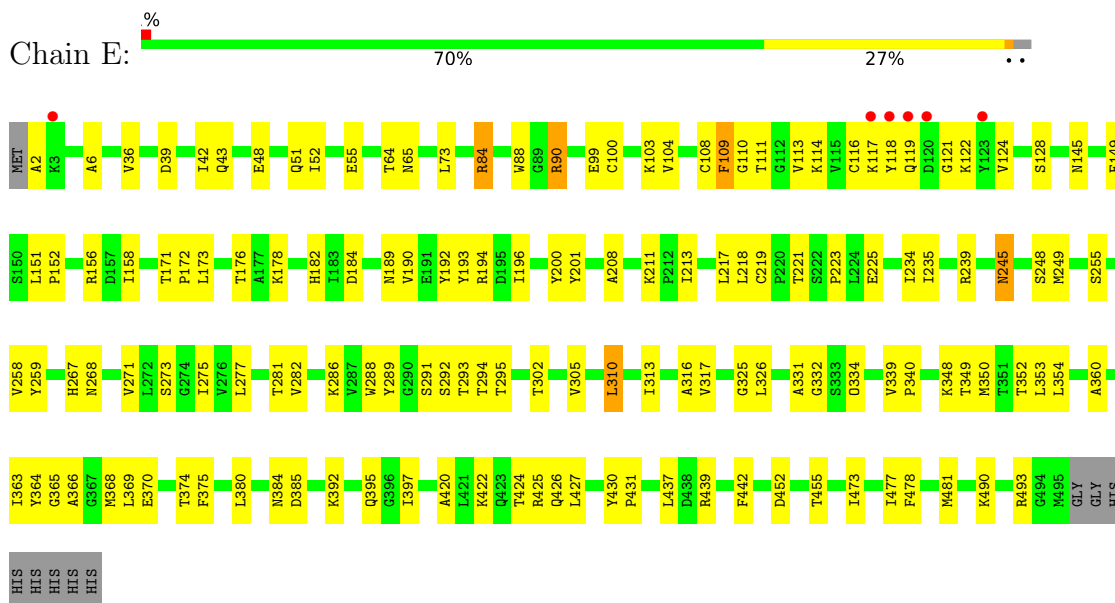
● Molecule 1: Trimethylamine methyltransferase



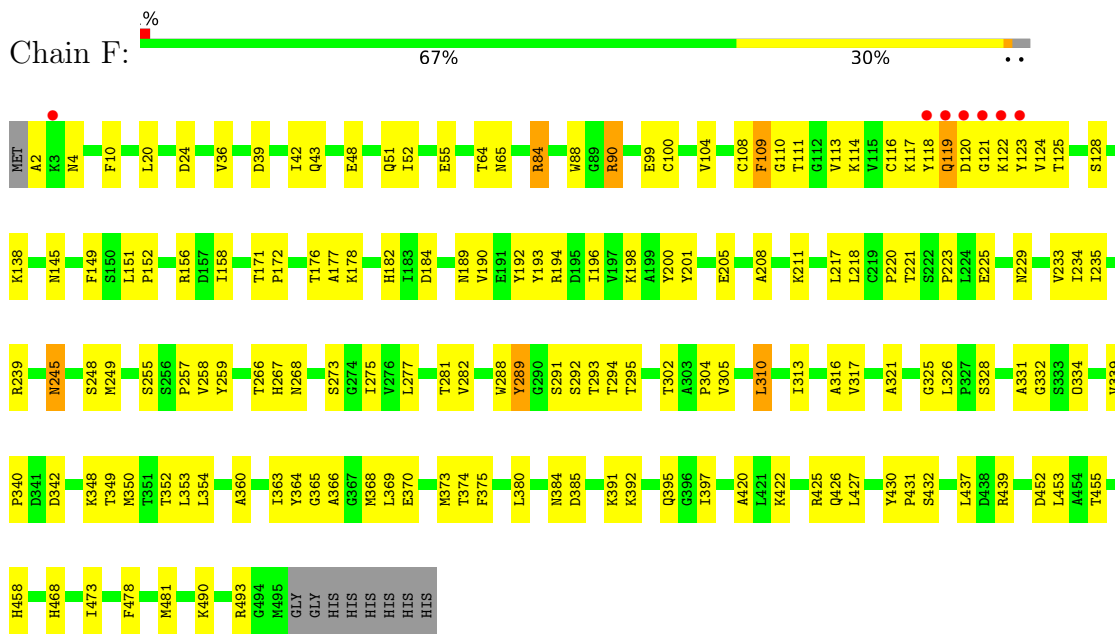
● Molecule 1: Trimethylamine methyltransferase



● Molecule 1: Trimethylamine methyltransferase



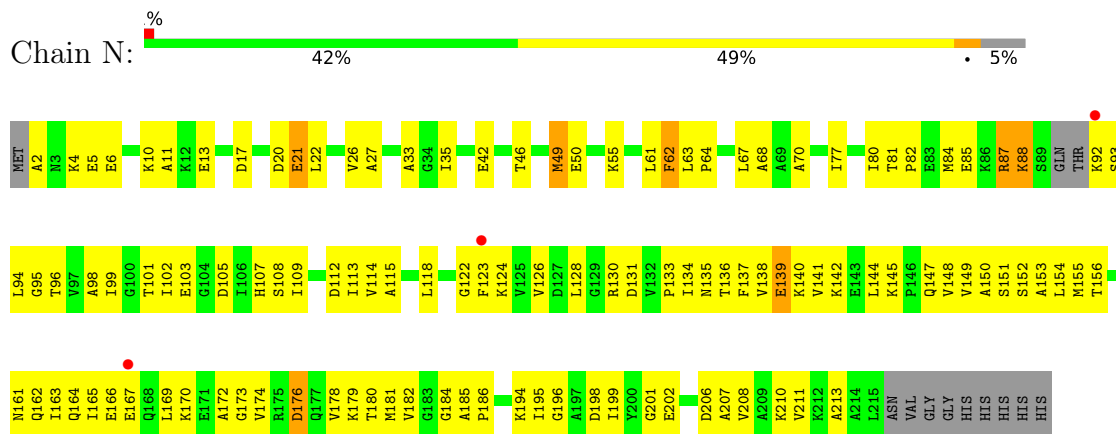
• Molecule 1: Trimethylamine methyltransferase



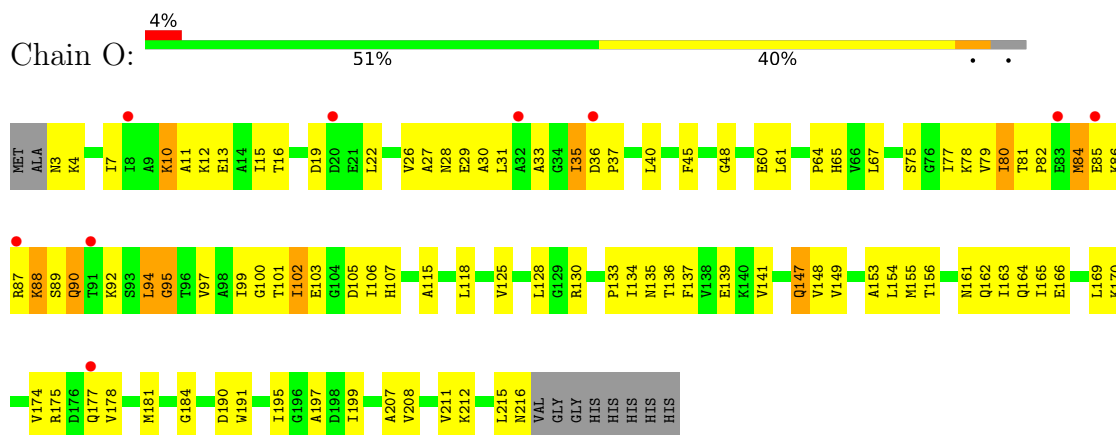
• Molecule 2: Trimethylamine methyltransferase corrinoid protein



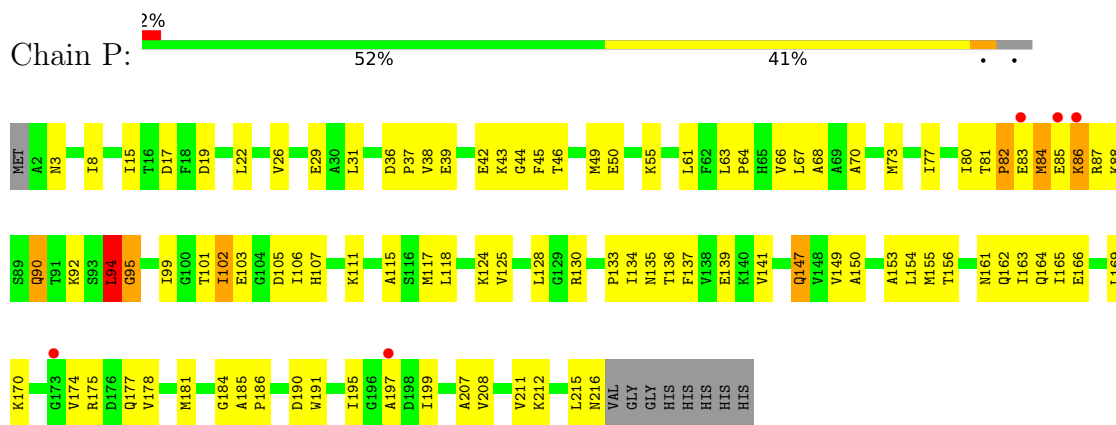
● Molecule 2: Trimethylamine methyltransferase corrinoid protein



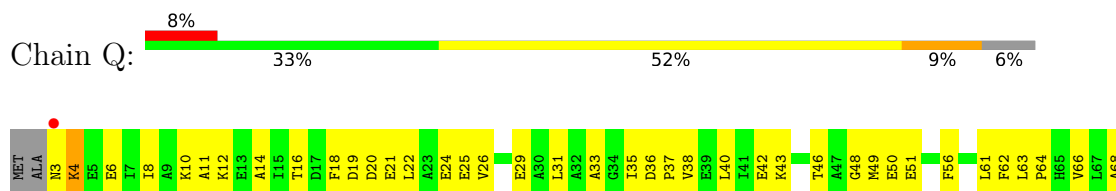
● Molecule 2: Trimethylamine methyltransferase corrinoid protein

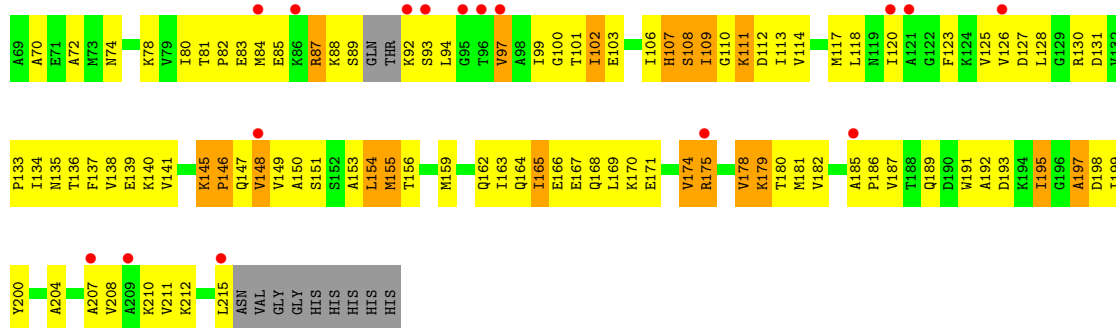


● Molecule 2: Trimethylamine methyltransferase corrinoid protein



● Molecule 2: Trimethylamine methyltransferase corrinoid protein





• Molecule 2: Trimethylamine methyltransferase corrinoid protein



4 Data and refinement statistics i

Property	Value	Source
Space group	P 1 21 1	Depositor
Cell constants a, b, c, α , β , γ	120.43Å 188.14Å 123.95Å 90.00° 119.25° 90.00°	Depositor
Resolution (Å)	20.00 – 2.70 19.93 – 2.69	Depositor EDS
% Data completeness (in resolution range)	95.0 (20.00-2.70) 94.1 (19.93-2.69)	Depositor EDS
R_{merge}	0.08	Depositor
R_{sym}	(Not available)	Depositor
$\langle I/\sigma(I) \rangle$ ¹	3.01 (at 2.71Å)	Xtriage
Refinement program	CNS	Depositor
R, R_{free}	0.192 , 0.238 0.190 , 0.194	Depositor DCC
R_{free} test set	6602 reflections (5.27%)	wwPDB-VP
Wilson B-factor (Å ²)	39.5	Xtriage
Anisotropy	0.062	Xtriage
Bulk solvent k_{sol} (e/Å ³), B_{sol} (Å ²)	0.29 , 10.9	EDS
L-test for twinning ²	$\langle L \rangle = 0.46$, $\langle L^2 \rangle = 0.28$	Xtriage
Estimated twinning fraction	0.025 for l,k,-h-l 0.025 for -h-l,k,h 0.277 for h,-k,-h-l 0.033 for l,-k,h 0.025 for -h-l,-k,l	Xtriage
F_o, F_c correlation	0.94	EDS
Total number of atoms	33443	wwPDB-VP
Average B, all atoms (Å ²)	47.0	wwPDB-VP

Xtriage's analysis on translational NCS is as follows: *The largest off-origin peak in the Patterson function is 2.91% of the height of the origin peak. No significant pseudotranslation is detected.*

¹Intensities estimated from amplitudes.

²Theoretical values of $\langle |L| \rangle$, $\langle L^2 \rangle$ for acentric reflections are 0.5, 0.333 respectively for untwinned datasets, and 0.375, 0.2 for perfectly twinned datasets.

5 Model quality [i](#)

5.1 Standard geometry [i](#)

Bond lengths and bond angles in the following residue types are not validated in this section: HCB, GOL, PYL

The Z score for a bond length (or angle) is the number of standard deviations the observed value is removed from the expected value. A bond length (or angle) with $|Z| > 5$ is considered an outlier worth inspection. RMSZ is the root-mean-square of all Z scores of the bond lengths (or angles).

Mol	Chain	Bond lengths		Bond angles	
		RMSZ	# Z >5	RMSZ	# Z >5
1	A	0.39	0/3858	0.63	1/5229 (0.0%)
1	B	0.37	0/3902	0.60	0/5291
1	C	0.36	0/3902	0.60	0/5291
1	D	0.40	0/3858	0.65	1/5229 (0.0%)
1	E	0.37	0/3902	0.60	0/5291
1	F	0.35	0/3902	0.60	1/5291 (0.0%)
2	M	0.31	0/1611	0.55	0/2174
2	N	0.35	0/1591	0.56	0/2145
2	O	0.29	0/1611	0.55	0/2174
2	P	0.31	0/1616	0.55	0/2181
2	Q	0.33	0/1586	0.55	0/2138
2	R	0.30	0/1611	0.55	0/2174
All	All	0.36	0/32950	0.60	3/44608 (0.0%)

There are no bond length outliers.

All (3) bond angle outliers are listed below:

Mol	Chain	Res	Type	Atoms	Z	Observed(°)	Ideal(°)
1	D	289	TYR	N-CA-C	-6.01	94.78	111.00
1	A	89	GLY	N-CA-C	-5.25	99.97	113.10
1	F	289	TYR	N-CA-C	-5.21	96.92	111.00

There are no chirality outliers.

There are no planarity outliers.

5.2 Too-close contacts [i](#)

In the following table, the Non-H and H(model) columns list the number of non-hydrogen atoms and hydrogen atoms in the chain respectively. The H(added) column lists the number of hydrogen

atoms added and optimized by MolProbity. The Clashes column lists the number of clashes within the asymmetric unit, whereas Symm-Clashes lists symmetry-related clashes.

Mol	Chain	Non-H	H(model)	H(added)	Clashes	Symm-Clashes
1	A	3801	0	3804	208	0
1	B	3843	0	3836	142	0
1	C	3843	0	3836	139	0
1	D	3801	0	3804	185	0
1	E	3843	0	3836	135	0
1	F	3843	0	3836	142	0
2	M	1595	0	1622	115	0
2	N	1576	0	1605	103	0
2	O	1595	0	1622	100	0
2	P	1600	0	1627	92	0
2	Q	1571	0	1600	162	0
2	R	1595	0	1622	104	0
3	A	6	0	8	0	0
3	C	6	0	8	0	0
3	E	6	0	8	3	0
3	F	6	0	8	0	0
4	M	90	0	84	15	0
4	N	90	0	84	10	0
4	O	90	0	84	14	0
4	P	90	0	84	15	0
4	Q	90	0	84	13	0
4	R	90	0	84	16	0
5	A	44	0	0	4	0
5	B	63	0	0	4	0
5	C	47	0	0	6	0
5	D	62	0	0	4	0
5	E	66	0	0	8	0
5	F	47	0	0	2	0
5	M	5	0	0	0	0
5	N	13	0	0	3	0
5	O	5	0	0	0	0
5	P	6	0	0	0	0
5	Q	11	0	0	2	0
5	R	4	0	0	0	0
All	All	33443	0	33186	1580	0

The all-atom clashscore is defined as the number of clashes found per 1000 atoms (including hydrogen atoms). The all-atom clashscore for this structure is 24.

The worst 5 of 1580 close contacts within the same asymmetric unit are listed below, sorted by their clash magnitude.

Atom-1	Atom-2	Interatomic distance (Å)	Clash overlap (Å)
2:P:37:PRO:HG2	2:P:90:GLN:HE22	1.13	1.12
1:F:473:ILE:HG21	1:F:481:MET:HE1	1.35	1.09
1:B:473:ILE:HG21	1:B:481:MET:HE1	1.36	1.08
2:Q:118:LEU:HD23	2:Q:208:VAL:HG22	1.37	1.07
2:R:94:LEU:HD12	2:R:95:GLY:H	1.11	1.06

There are no symmetry-related clashes.

5.3 Torsion angles [\(i\)](#)

5.3.1 Protein backbone [\(i\)](#)

In the following table, the Percentiles column shows the percent Ramachandran outliers of the chain as a percentile score with respect to all X-ray entries followed by that with respect to entries of similar resolution.

The Analysed column shows the number of residues for which the backbone conformation was analysed, and the total number of residues.

Mol	Chain	Analysed	Favoured	Allowed	Outliers	Percentiles	
1	A	489/503 (97%)	453 (93%)	35 (7%)	1 (0%)	47	73
1	B	499/503 (99%)	479 (96%)	20 (4%)	0	100	100
1	C	499/503 (99%)	482 (97%)	17 (3%)	0	100	100
1	D	489/503 (97%)	457 (94%)	30 (6%)	2 (0%)	34	60
1	E	499/503 (99%)	475 (95%)	24 (5%)	0	100	100
1	F	499/503 (99%)	469 (94%)	30 (6%)	0	100	100
2	M	212/224 (95%)	191 (90%)	14 (7%)	7 (3%)	4	8
2	N	208/224 (93%)	186 (89%)	15 (7%)	7 (3%)	3	8
2	O	212/224 (95%)	187 (88%)	18 (8%)	7 (3%)	4	8
2	P	213/224 (95%)	187 (88%)	20 (9%)	6 (3%)	5	11
2	Q	207/224 (92%)	155 (75%)	36 (17%)	16 (8%)	1	1
2	R	212/224 (95%)	185 (87%)	22 (10%)	5 (2%)	6	15
All	All	4238/4362 (97%)	3906 (92%)	281 (7%)	51 (1%)	13	32

5 of 51 Ramachandran outliers are listed below:

Mol	Chain	Res	Type
1	D	4	ASN

Continued on next page...

Continued from previous page...

Mol	Chain	Res	Type
2	M	85	GLU
2	O	94	LEU
2	O	95	GLY
2	P	84	MET

5.3.2 Protein sidechains [i](#)

In the following table, the Percentiles column shows the percent sidechain outliers of the chain as a percentile score with respect to all X-ray entries followed by that with respect to entries of similar resolution.

The Analysed column shows the number of residues for which the sidechain conformation was analysed, and the total number of residues.

Mol	Chain	Analysed	Rotameric	Outliers	Percentiles	
1	A	407/411 (99%)	391 (96%)	16 (4%)	32	61
1	B	411/411 (100%)	401 (98%)	10 (2%)	49	77
1	C	411/411 (100%)	402 (98%)	9 (2%)	52	79
1	D	407/411 (99%)	395 (97%)	12 (3%)	42	71
1	E	411/411 (100%)	404 (98%)	7 (2%)	60	84
1	F	411/411 (100%)	402 (98%)	9 (2%)	52	79
2	M	169/176 (96%)	163 (96%)	6 (4%)	35	64
2	N	166/176 (94%)	159 (96%)	7 (4%)	30	58
2	O	169/176 (96%)	162 (96%)	7 (4%)	30	59
2	P	169/176 (96%)	160 (95%)	9 (5%)	22	48
2	Q	166/176 (94%)	159 (96%)	7 (4%)	30	58
2	R	169/176 (96%)	163 (96%)	6 (4%)	35	64
All	All	3466/3522 (98%)	3361 (97%)	105 (3%)	42	70

5 of 105 residues with a non-rotameric sidechain are listed below:

Mol	Chain	Res	Type
1	F	119[A]	GLN
2	N	49	MET
2	R	3	ASN
1	F	245	ASN
2	M	90	GLN

Sometimes sidechains can be flipped to improve hydrogen bonding and reduce clashes. 5 of 104 such sidechains are listed below:

Mol	Chain	Res	Type
1	E	245	ASN
1	F	384	ASN
2	Q	177	GLN
1	E	384	ASN
1	F	51	GLN

5.3.3 RNA [i](#)

There are no RNA molecules in this entry.

5.4 Non-standard residues in protein, DNA, RNA chains [i](#)

There are no non-standard protein/DNA/RNA residues in this entry.

5.5 Carbohydrates [i](#)

There are no monosaccharides in this entry.

5.6 Ligand geometry [i](#)

10 ligands are modelled in this entry.

In the following table, the Counts columns list the number of bonds (or angles) for which Mogul statistics could be retrieved, the number of bonds (or angles) that are observed in the model and the number of bonds (or angles) that are defined in the Chemical Component Dictionary. The Link column lists molecule types, if any, to which the group is linked. The Z score for a bond length (or angle) is the number of standard deviations the observed value is removed from the expected value. A bond length (or angle) with $|Z| > 2$ is considered an outlier worth inspection. RMSZ is the root-mean-square of all Z scores of the bond lengths (or angles).

Mol	Type	Chain	Res	Link	Bond lengths			Bond angles		
					Counts	RMSZ	$\# Z > 2$	Counts	RMSZ	$\# Z > 2$
3	GOL	A	601	-	5,5,5	0.32	0	5,5,5	0.89	0
3	GOL	E	601	-	5,5,5	0.26	0	5,5,5	0.96	0
4	HCB	N	301	2	88,100,100	1.05	3 (3%)	138,164,164	1.48	18 (13%)
4	HCB	Q	301	2	88,100,100	1.00	3 (3%)	138,164,164	1.50	18 (13%)
3	GOL	C	601	-	5,5,5	0.34	0	5,5,5	0.49	0
4	HCB	O	301	2	88,100,100	1.02	4 (4%)	138,164,164	1.46	16 (11%)

Mol	Type	Chain	Res	Link	Bond lengths			Bond angles		
					Counts	RMSZ	# Z > 2	Counts	RMSZ	# Z > 2
4	HCB	R	301	2	88,100,100	1.02	2 (2%)	138,164,164	1.47	18 (13%)
4	HCB	P	301	2	88,100,100	0.99	4 (4%)	138,164,164	1.48	18 (13%)
4	HCB	M	301	2	88,100,100	1.00	4 (4%)	138,164,164	1.46	16 (11%)
3	GOL	F	601	-	5,5,5	0.37	0	5,5,5	0.61	0

In the following table, the Chirals column lists the number of chiral outliers, the number of chiral centers analysed, the number of these observed in the model and the number defined in the Chemical Component Dictionary. Similar counts are reported in the Torsion and Rings columns. '-' means no outliers of that kind were identified.

Mol	Type	Chain	Res	Link	Chirals	Torsions	Rings
3	GOL	A	601	-	-	0/4/4/4	-
3	GOL	E	601	-	-	0/4/4/4	-
4	HCB	N	301	2	-	14/52/223/223	0/3/11/11
4	HCB	Q	301	2	-	16/52/223/223	0/3/11/11
3	GOL	C	601	-	-	2/4/4/4	-
4	HCB	O	301	2	-	12/52/223/223	0/3/11/11
4	HCB	R	301	2	-	12/52/223/223	0/3/11/11
4	HCB	P	301	2	-	12/52/223/223	0/3/11/11
4	HCB	M	301	2	-	12/52/223/223	0/3/11/11
3	GOL	F	601	-	-	0/4/4/4	-

The worst 5 of 20 bond length outliers are listed below:

Mol	Chain	Res	Type	Atoms	Z	Observed(Å)	Ideal(Å)
4	Q	301	HCB	C14-N23	4.47	1.42	1.30
4	P	301	HCB	C14-N23	4.44	1.42	1.30
4	M	301	HCB	C14-N23	4.38	1.42	1.30
4	N	301	HCB	C14-N23	4.35	1.42	1.30
4	R	301	HCB	C14-N23	4.35	1.42	1.30

The worst 5 of 104 bond angle outliers are listed below:

Mol	Chain	Res	Type	Atoms	Z	Observed(°)	Ideal(°)
4	Q	301	HCB	C11-N23-C14	8.89	109.67	106.31
4	R	301	HCB	C11-N23-C14	8.74	109.62	106.31
4	P	301	HCB	C11-N23-C14	8.68	109.59	106.31
4	M	301	HCB	C11-N23-C14	8.39	109.48	106.31
4	N	301	HCB	C11-N23-C14	8.35	109.47	106.31

There are no chirality outliers.

5 of 80 torsion outliers are listed below:

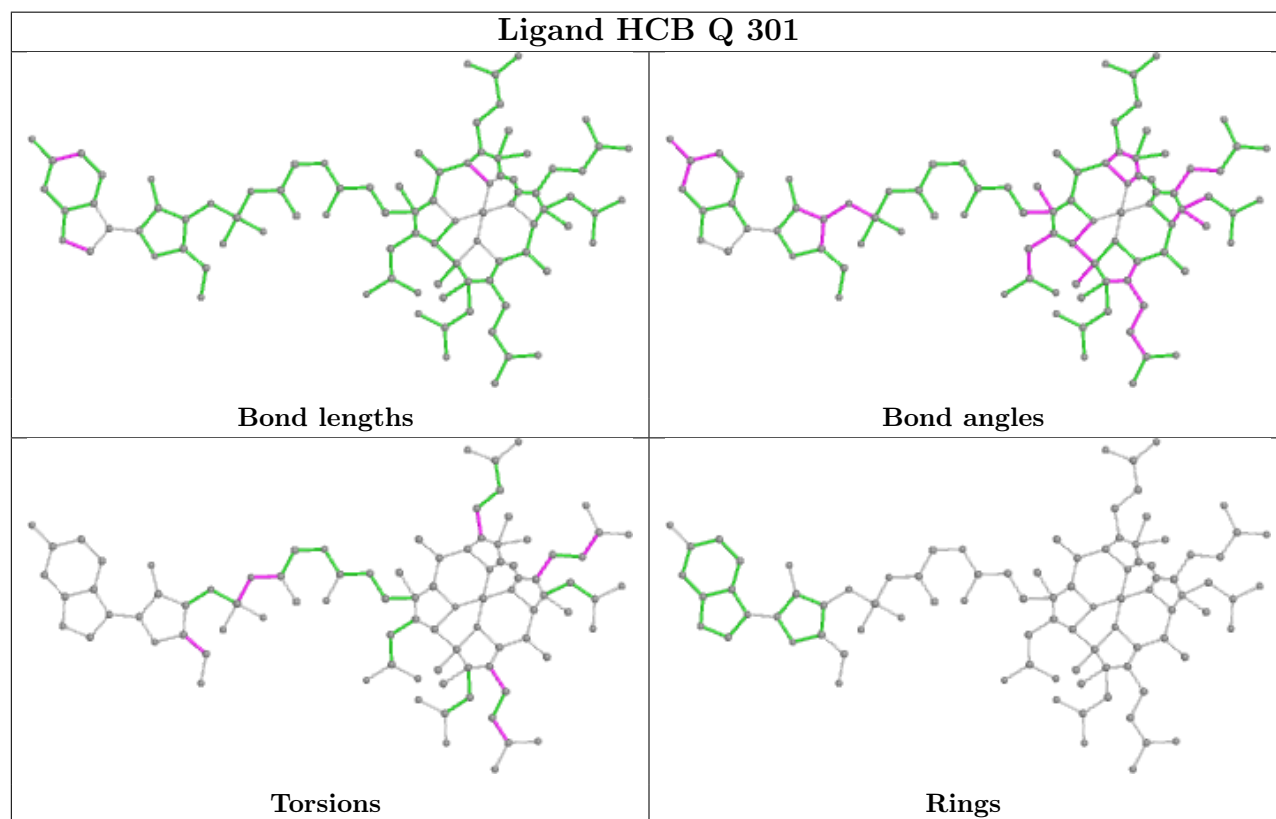
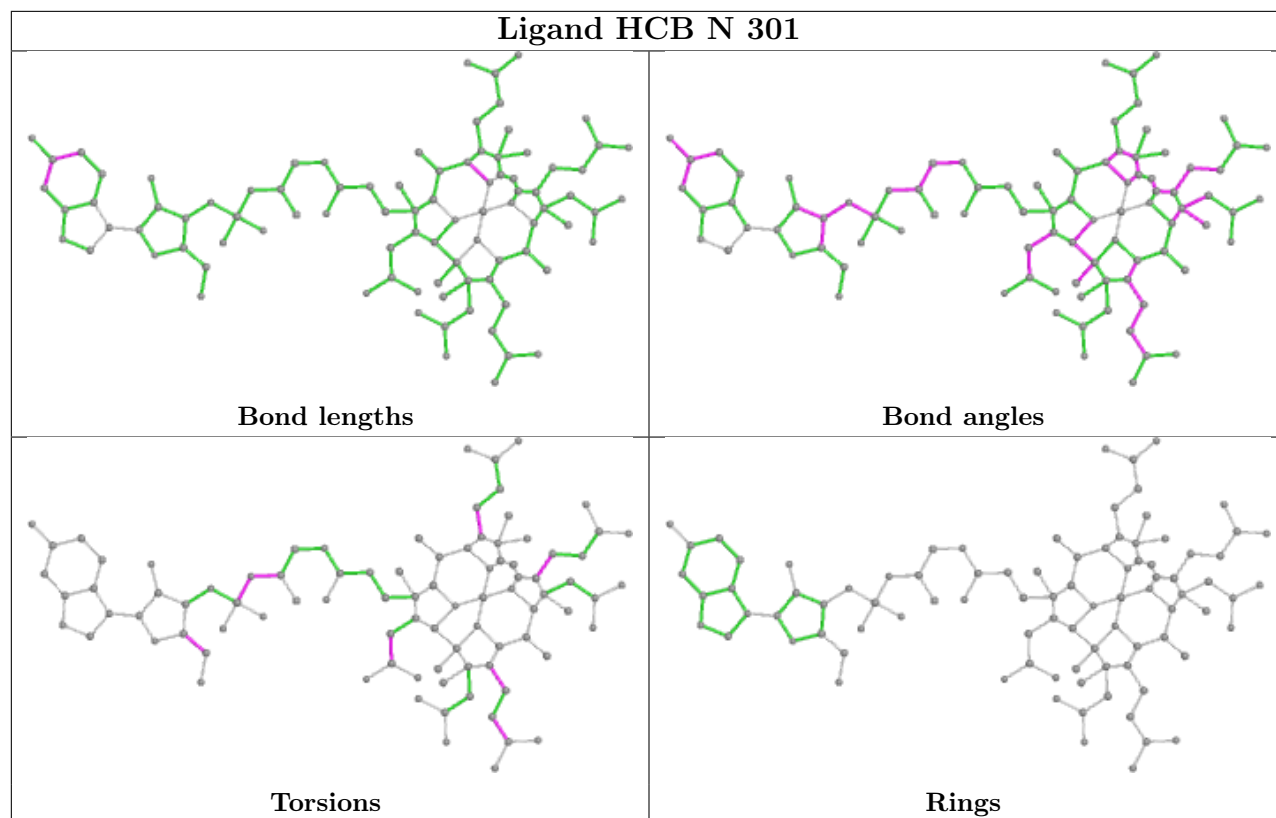
Mol	Chain	Res	Type	Atoms
4	M	301	HCB	C2-C3-C30-C31
4	M	301	HCB	C4-C3-C30-C31
4	M	301	HCB	C1P-C2P-O3-P
4	M	301	HCB	C3P-C2P-O3-P
4	M	301	HCB	C2P-O3-P-O4

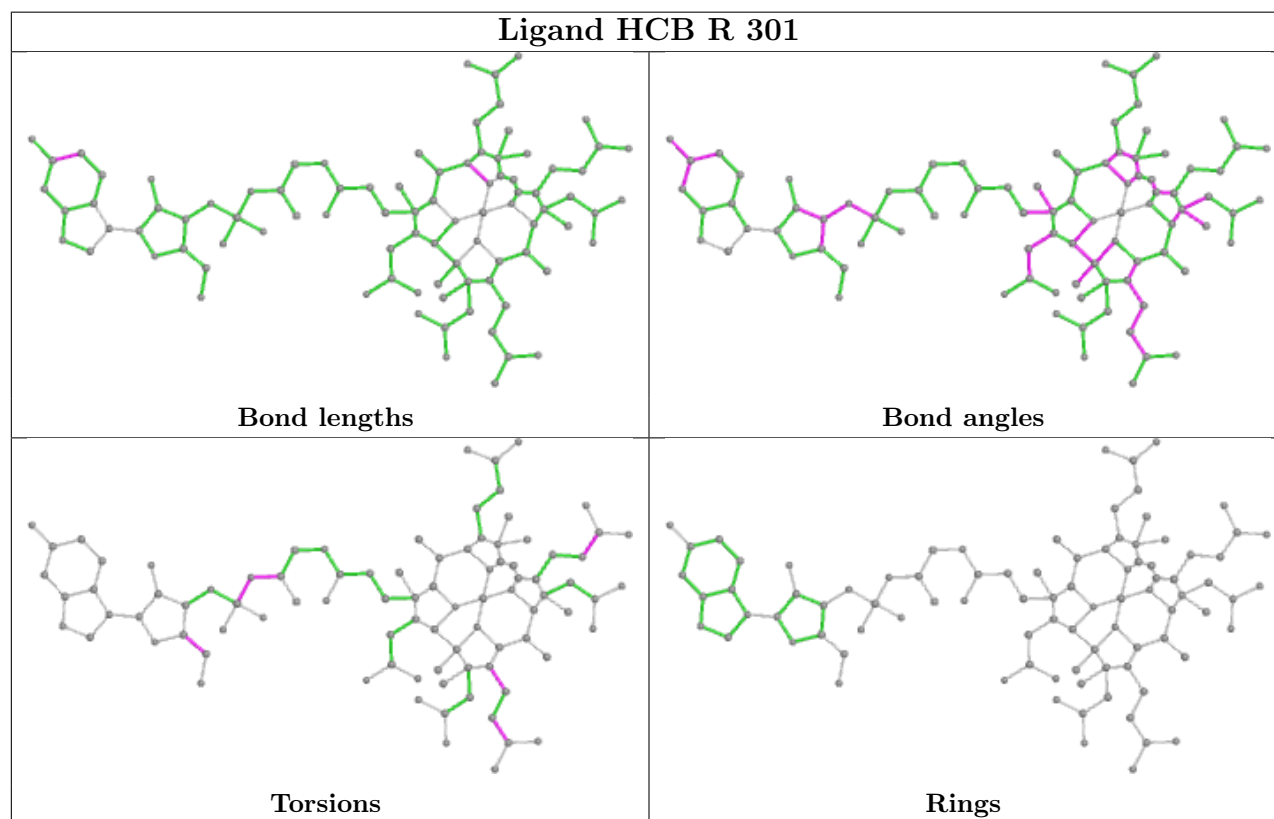
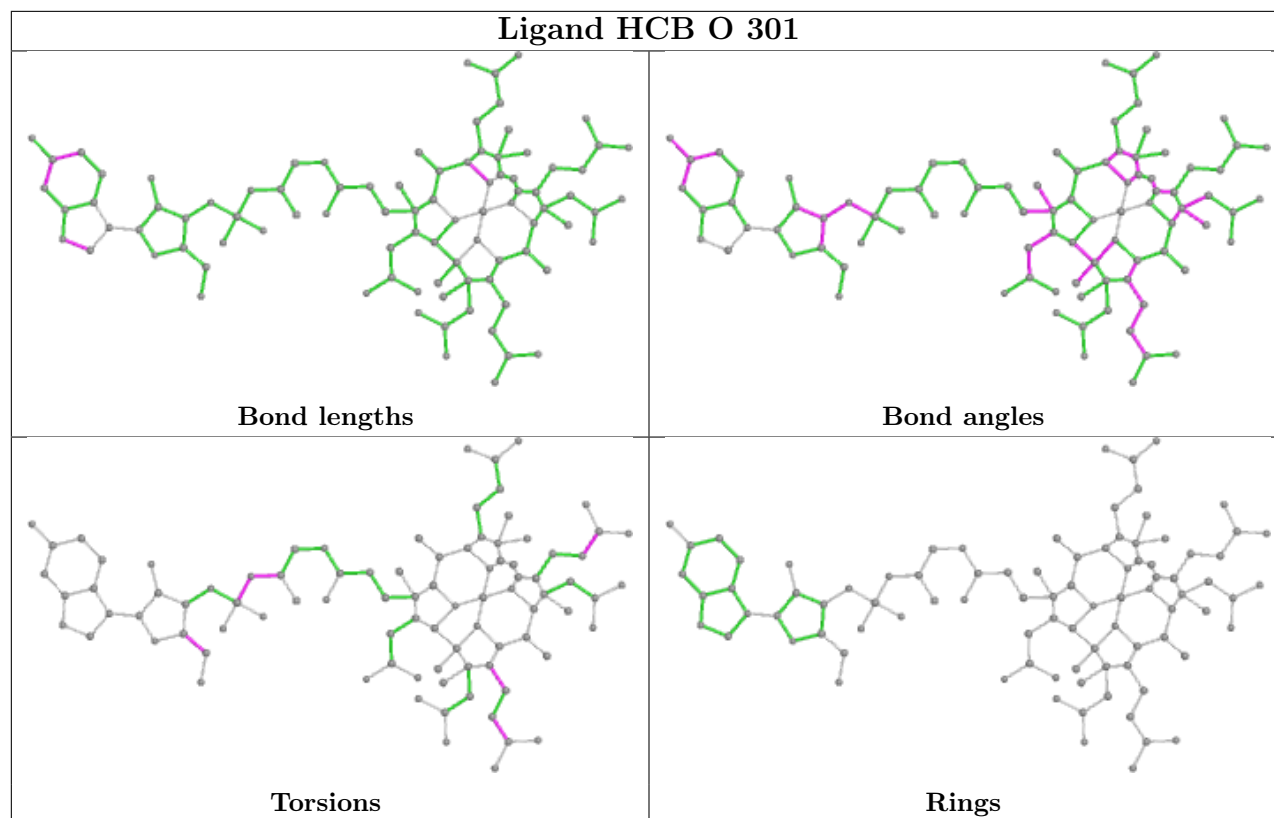
There are no ring outliers.

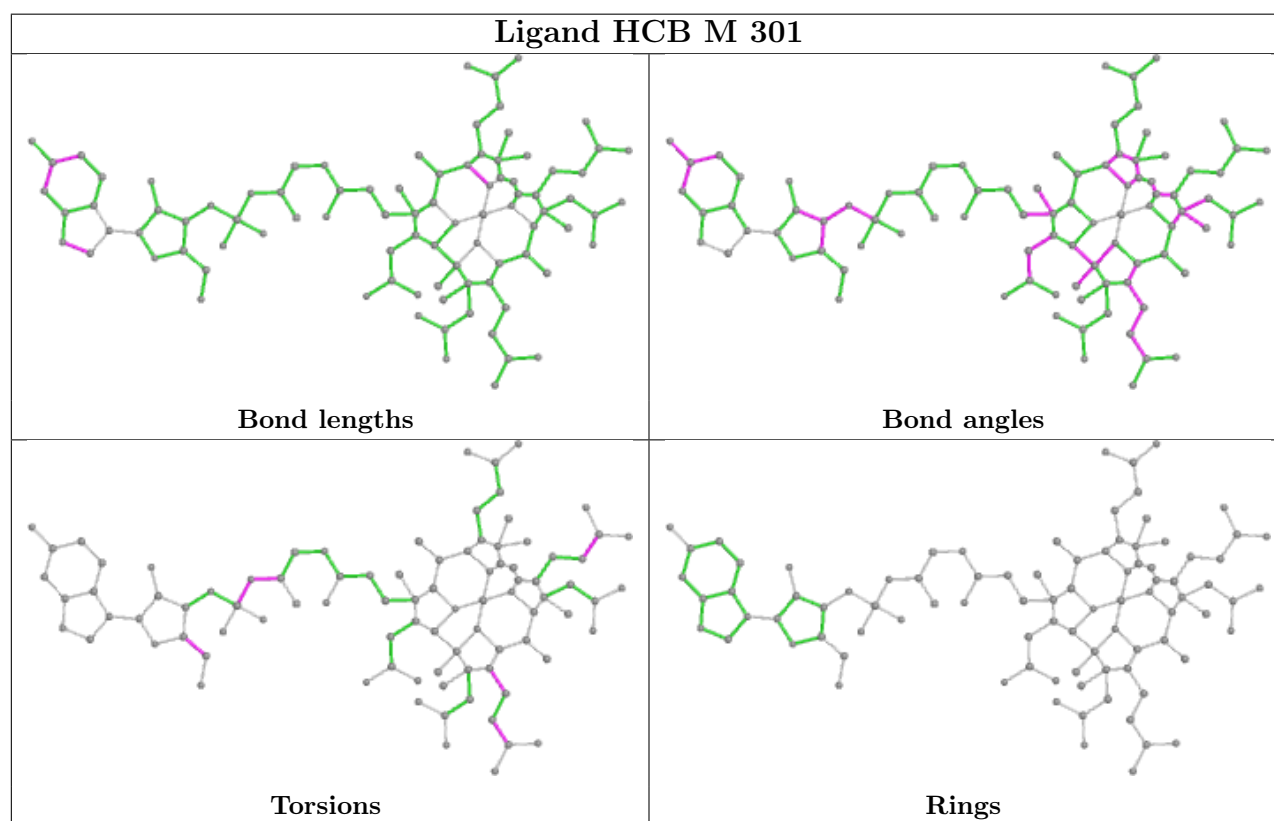
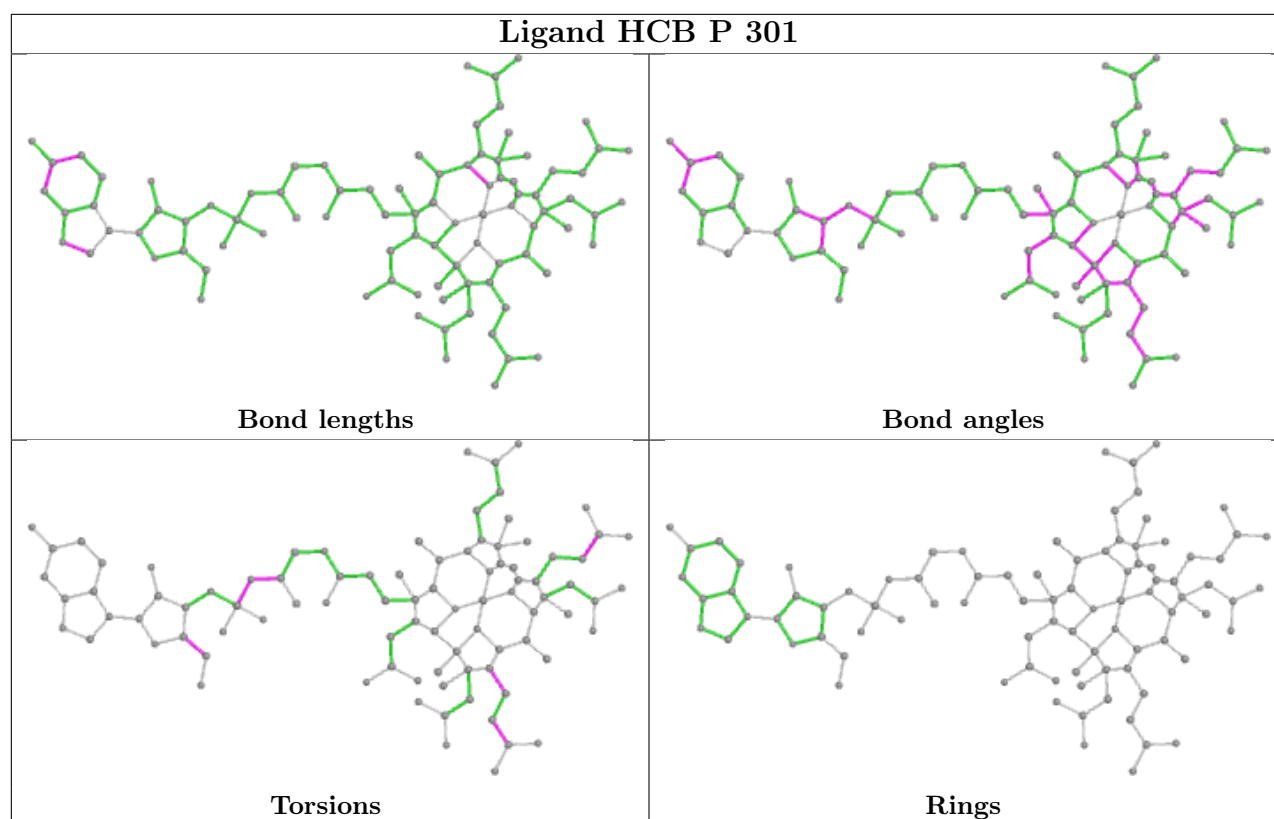
7 monomers are involved in 86 short contacts:

Mol	Chain	Res	Type	Clashes	Symm-Clashes
3	E	601	GOL	3	0
4	N	301	HCB	10	0
4	Q	301	HCB	13	0
4	O	301	HCB	14	0
4	R	301	HCB	16	0
4	P	301	HCB	15	0
4	M	301	HCB	15	0

The following is a two-dimensional graphical depiction of Mogul quality analysis of bond lengths, bond angles, torsion angles, and ring geometry for all instances of the Ligand of Interest. In addition, ligands with molecular weight > 250 and outliers as shown on the validation Tables will also be included. For torsion angles, if less than 5% of the Mogul distribution of torsion angles is within 10 degrees of the torsion angle in question, then that torsion angle is considered an outlier. Any bond that is central to one or more torsion angles identified as an outlier by Mogul will be highlighted in the graph. For rings, the root-mean-square deviation (RMSD) between the ring in question and similar rings identified by Mogul is calculated over all ring torsion angles. If the average RMSD is greater than 60 degrees and the minimal RMSD between the ring in question and any Mogul-identified rings is also greater than 60 degrees, then that ring is considered an outlier. The outliers are highlighted in purple. The color gray indicates Mogul did not find sufficient equivalents in the CSD to analyse the geometry.







5.7 Other polymers [i](#)

There are no such residues in this entry.

5.8 Polymer linkage issues [i](#)

There are no chain breaks in this entry.

6 Fit of model and data [i](#)

6.1 Protein, DNA and RNA chains [i](#)

In the following table, the column labelled '#RSRZ > 2' contains the number (and percentage) of RSRZ outliers, followed by percent RSRZ outliers for the chain as percentile scores relative to all X-ray entries and entries of similar resolution. The OWAB column contains the minimum, median, 95th percentile and maximum values of the occupancy-weighted average B-factor per residue. The column labelled 'Q < 0.9' lists the number of (and percentage) of residues with an average occupancy less than 0.9.

Mol	Chain	Analysed	<RSRZ>	#RSRZ>2	OWAB(Å ²)	Q<0.9
1	A	490/503 (97%)	-0.42	4 (0%) 86 87	16, 40, 63, 103	0
1	B	493/503 (98%)	-0.40	7 (1%) 75 77	11, 33, 59, 85	0
1	C	493/503 (98%)	-0.42	4 (0%) 86 87	15, 36, 62, 92	0
1	D	490/503 (97%)	-0.47	5 (1%) 82 83	13, 36, 59, 95	0
1	E	493/503 (98%)	-0.42	6 (1%) 79 80	12, 31, 56, 86	0
1	F	493/503 (98%)	-0.42	7 (1%) 75 77	15, 38, 64, 93	0
2	M	214/224 (95%)	0.02	3 (1%) 75 77	35, 66, 92, 129	0
2	N	212/224 (94%)	-0.18	3 (1%) 75 77	27, 60, 84, 95	0
2	O	214/224 (95%)	0.04	9 (4%) 36 35	33, 68, 98, 125	0
2	P	215/224 (95%)	-0.07	5 (2%) 60 62	31, 62, 90, 115	0
2	Q	211/224 (94%)	0.44	17 (8%) 12 10	31, 76, 111, 123	0
2	R	214/224 (95%)	-0.00	4 (1%) 66 69	36, 66, 93, 121	0
All	All	4232/4362 (97%)	-0.29	74 (1%) 70 72	11, 42, 85, 129	0

The worst 5 of 74 RSRZ outliers are listed below:

Mol	Chain	Res	Type	RSRZ
2	R	86	LYS	8.8
2	Q	97	VAL	8.8
2	M	85	GLU	8.0
1	F	120[A]	ASP	7.5
1	D	123[A]	TYR	7.1

6.2 Non-standard residues in protein, DNA, RNA chains [i](#)

There are no non-standard protein/DNA/RNA residues in this entry.

6.3 Carbohydrates [i](#)

There are no monosaccharides in this entry.

6.4 Ligands [i](#)

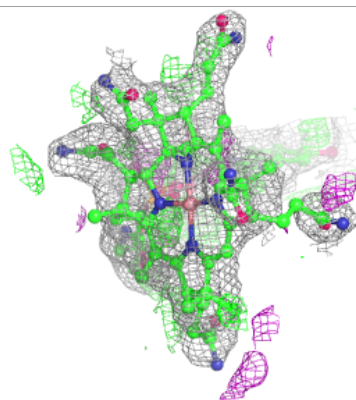
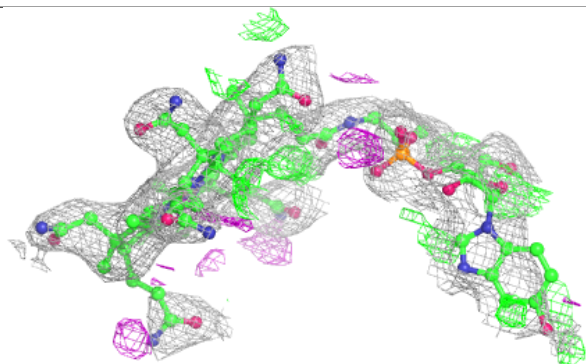
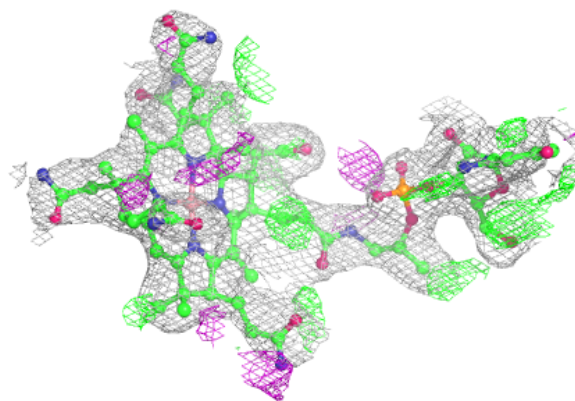
In the following table, the Atoms column lists the number of modelled atoms in the group and the number defined in the chemical component dictionary. The B-factors column lists the minimum, median, 95th percentile and maximum values of B factors of atoms in the group. The column labelled 'Q< 0.9' lists the number of atoms with occupancy less than 0.9.

Mol	Type	Chain	Res	Atoms	RSCC	RSR	B-factors(Å ²)	Q<0.9
3	GOL	F	601	6/6	0.76	0.26	53,66,72,80	0
3	GOL	C	601	6/6	0.79	0.33	59,73,74,74	0
3	GOL	A	601	6/6	0.79	0.26	64,76,82,90	0
3	GOL	E	601	6/6	0.89	0.28	56,61,70,74	0
4	HCB	Q	301	90/90	0.92	0.20	35,67,100,109	0
4	HCB	R	301	90/90	0.95	0.16	30,51,62,70	0
4	HCB	O	301	90/90	0.96	0.17	27,48,67,73	0
4	HCB	P	301	90/90	0.96	0.17	24,48,66,72	0
4	HCB	M	301	90/90	0.96	0.17	30,53,70,84	0
4	HCB	N	301	90/90	0.96	0.17	16,54,67,95	0

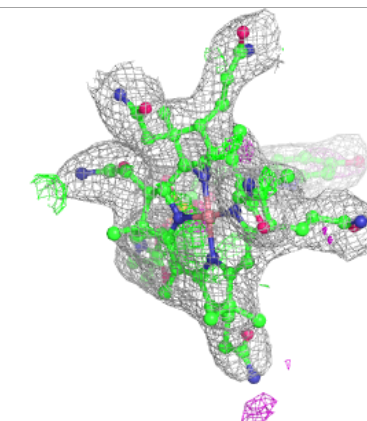
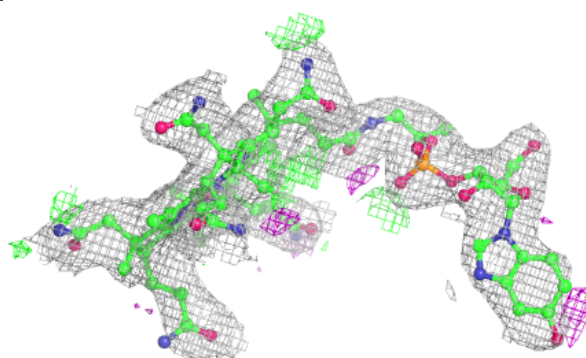
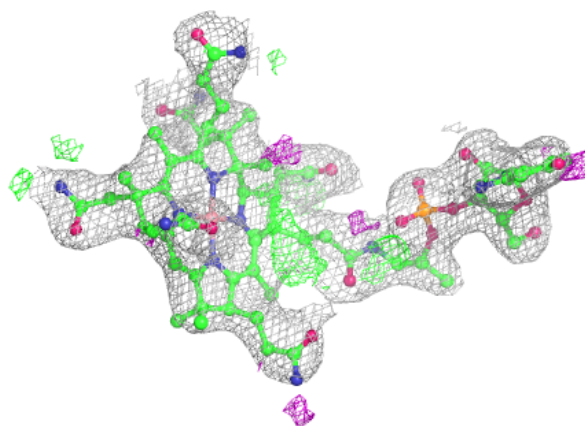
The following is a graphical depiction of the model fit to experimental electron density of all instances of the Ligand of Interest. In addition, ligands with molecular weight > 250 and outliers as shown on the geometry validation Tables will also be included. Each fit is shown from different orientation to approximate a three-dimensional view.

Electron density around HCB Q 301:

$2mF_o-DF_c$ (at 0.7 rmsd) in gray
 mF_o-DF_c (at 3 rmsd) in purple (negative)
and green (positive)

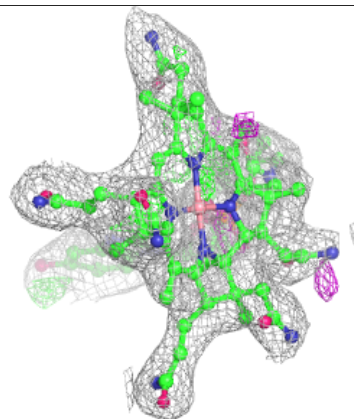
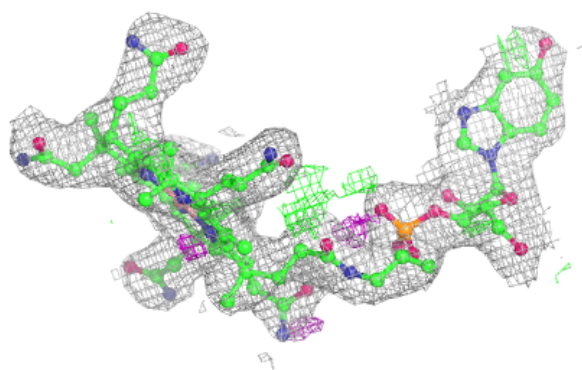
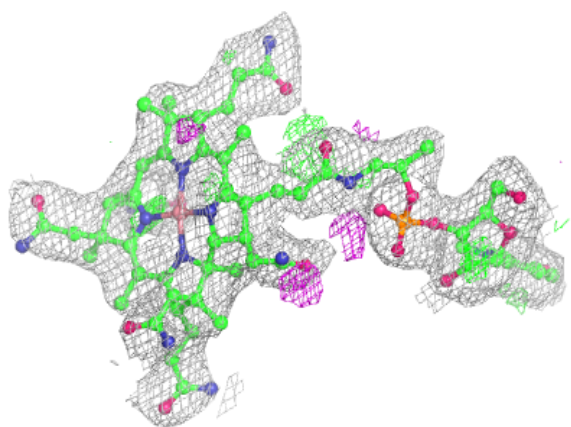
**Electron density around HCB R 301:**

$2mF_o-DF_c$ (at 0.7 rmsd) in gray
 mF_o-DF_c (at 3 rmsd) in purple (negative)
and green (positive)

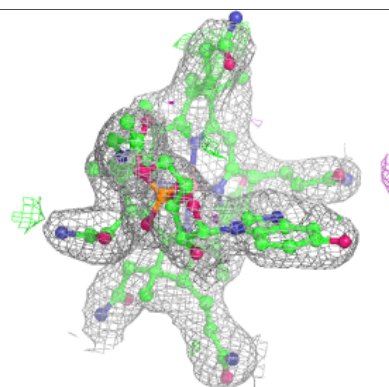
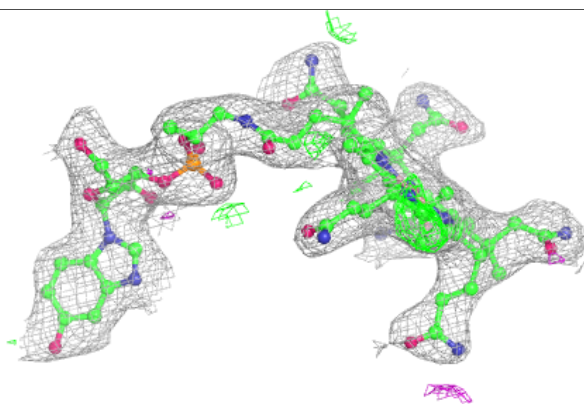
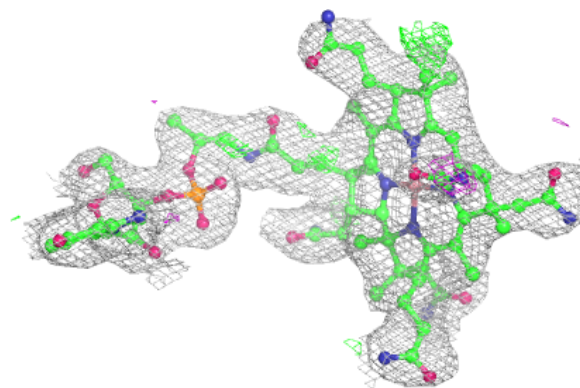


Electron density around HCB O 301:

$2mF_o-DF_c$ (at 0.7 rmsd) in gray
 mF_o-DF_c (at 3 rmsd) in purple (negative)
and green (positive)

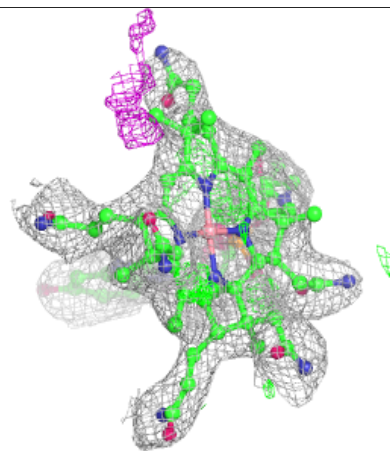
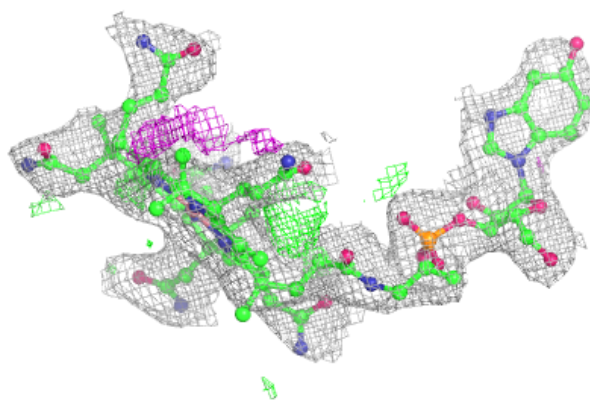
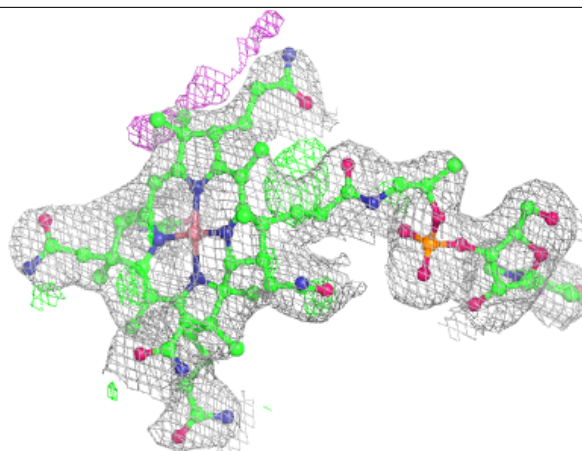
**Electron density around HCB P 301:**

$2mF_o-DF_c$ (at 0.7 rmsd) in gray
 mF_o-DF_c (at 3 rmsd) in purple (negative)
and green (positive)

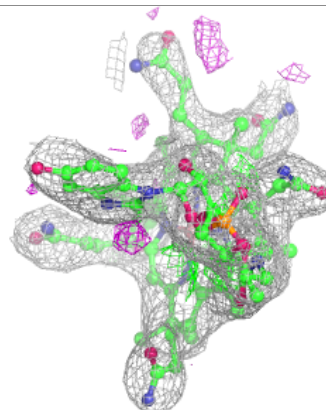
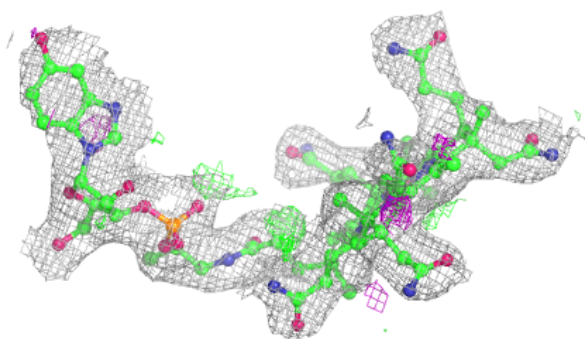
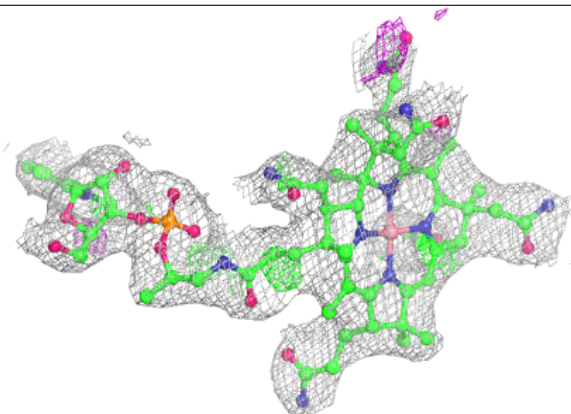


Electron density around HCB M 301:

$2mF_o-DF_c$ (at 0.7 rmsd) in gray
 mF_o-DF_c (at 3 rmsd) in purple (negative)
and green (positive)

**Electron density around HCB N 301:**

$2mF_o-DF_c$ (at 0.7 rmsd) in gray
 mF_o-DF_c (at 3 rmsd) in purple (negative)
and green (positive)



6.5 Other polymers [i](#)

There are no such residues in this entry.