



Full wwPDB X-ray Structure Validation Report ⓘ

Jun 17, 2024 – 09:15 PM EDT

PDB ID : 5XDG
Title : Crystal structure of tertiary complex of TdsC from *Paenibacillus* sp. A11-2 with FMN and dibenzothiophene sulfoxide
Authors : Hino, T.; Hamamoto, H.; Ohshiro, T.; Nagano, S.
Deposited on : 2017-03-28
Resolution : 1.75 Å (reported)

This is a Full wwPDB X-ray Structure Validation Report for a publicly released PDB entry.

We welcome your comments at validation@mail.wwpdb.org

A user guide is available at

<https://www.wwpdb.org/validation/2017/XrayValidationReportHelp>

with specific help available everywhere you see the ⓘ symbol.

The types of validation reports are described at

<http://www.wwpdb.org/validation/2017/FAQs#types>.

The following versions of software and data (see [references ⓘ](#)) were used in the production of this report:

MolProbity : 4.02b-467
Mogul : 1.8.5 (274361), CSD as541be (2020)
Xtriage (Phenix) : 1.13
EDS : 2.37.1
buster-report : 1.1.7 (2018)
Percentile statistics : 20191225.v01 (using entries in the PDB archive December 25th 2019)
Refmac : 5.8.0158
CCP4 : 7.0.044 (Gargrove)
Ideal geometry (proteins) : Engh & Huber (2001)
Ideal geometry (DNA, RNA) : Parkinson et al. (1996)
Validation Pipeline (wwPDB-VP) : 2.37.1

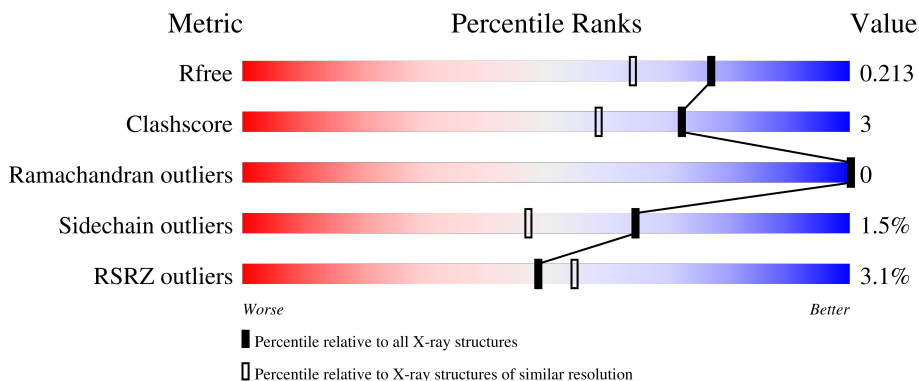
1 Overall quality at a glance

The following experimental techniques were used to determine the structure:

X-RAY DIFFRACTION

The reported resolution of this entry is 1.75 Å.

Percentile scores (ranging between 0-100) for global validation metrics of the entry are shown in the following graphic. The table shows the number of entries on which the scores are based.



Metric	Whole archive (#Entries)	Similar resolution (#Entries, resolution range(Å))
R_{free}	130704	3764 (1.76-1.72)
Clashscore	141614	3923 (1.76-1.72)
Ramachandran outliers	138981	3878 (1.76-1.72)
Sidechain outliers	138945	3878 (1.76-1.72)
RSRZ outliers	127900	3705 (1.76-1.72)

The table below summarises the geometric issues observed across the polymeric chains and their fit to the electron density. The red, orange, yellow and green segments of the lower bar indicate the fraction of residues that contain outliers for ≥ 3 , 2, 1 and 0 types of geometric quality criteria respectively. A grey segment represents the fraction of residues that are not modelled. The numeric value for each fraction is indicated below the corresponding segment, with a dot representing fractions $\leq 5\%$. The upper red bar (where present) indicates the fraction of residues that have poor fit to the electron density. The numeric value is given above the bar.

Mol	Chain	Length	Quality of chain
1	A	414	 6% 85% 11% .
1	B	414	 4% 89% 6% . .
1	C	414	 2% 89% 7% . .
1	D	414	 91% 5% .

2 Entry composition [i](#)

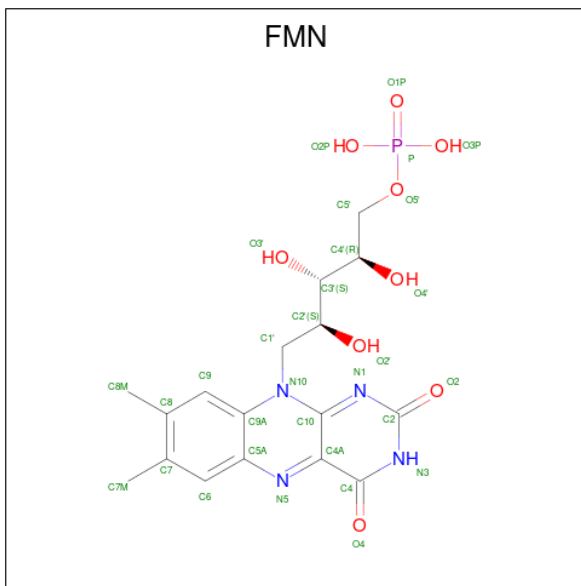
There are 6 unique types of molecules in this entry. The entry contains 14596 atoms, of which 124 are hydrogens and 0 are deuteriums.

In the tables below, the ZeroOcc column contains the number of atoms modelled with zero occupancy, the AltConf column contains the number of residues with at least one atom in alternate conformation and the Trace column contains the number of residues modelled with at most 2 atoms.

- Molecule 1 is a protein called Thermophilic dibenzothiophene desulfurization enzyme C.

Mol	Chain	Residues	Atoms					ZeroOcc	AltConf	Trace
			Total	C	N	O	S			
1	A	400	Total 3102	C 1964	N 557	O 577	S 4	0	0	0
1	B	400	Total 3111	C 1966	N 560	O 581	S 4	0	0	0
1	C	400	Total 3110	C 1967	N 560	O 579	S 4	0	0	0
1	D	400	Total 3118	C 1971	N 560	O 583	S 4	0	0	0

- Molecule 2 is FLAVIN MONONUCLEOTIDE (three-letter code: FMN) (formula: C₁₇H₂₁N₄O₉P).



Mol	Chain	Residues	Atoms					ZeroOcc	AltConf	
			Total	C	H	N	O			P
2	A	1	Total 50	C 17	H 19	N 4	O 9	P 1	0	0
2	B	1	Total 50	C 17	H 19	N 4	O 9	P 1	0	0

Continued on next page...

Continued from previous page...

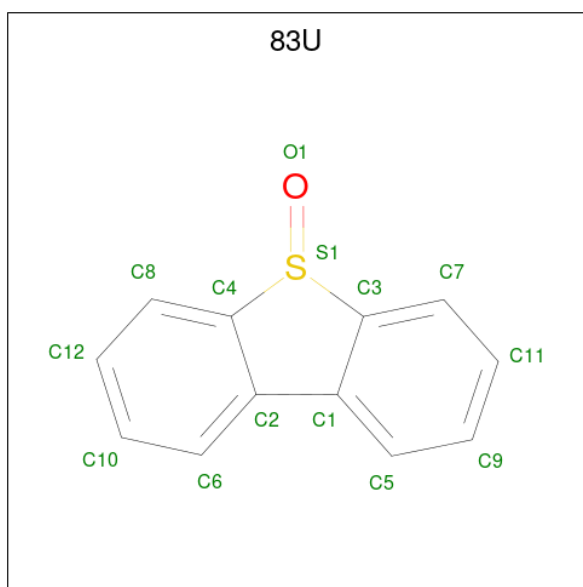
Mol	Chain	Residues	Atoms					ZeroOcc	AltConf	
2	C	1	Total	C	H	N	O	P	0	0
			50	17	19	4	9	1		
2	D	1	Total	C	H	N	O	P	0	0
			50	17	19	4	9	1		

- Molecule 3 is SULFATE ION (three-letter code: SO4) (formula: O₄S).



Mol	Chain	Residues	Atoms		ZeroOcc	AltConf
3	A	1	Total	O S	0	0
			5	4 1		
3	A	1	Total	O S	0	0
			5	4 1		
3	B	1	Total	O S	0	0
			5	4 1		
3	C	1	Total	O S	0	0
			5	4 1		
3	D	1	Total	O S	0	0
			5	4 1		

- Molecule 4 is dibenzothiophene 5-oxide (three-letter code: 83U) (formula: C₁₂H₈OS).



Mol	Chain	Residues	Atoms					ZeroOcc	AltConf
			Total	C	H	O	S		
4	A	1	Total	C	H	O	S	0	0
			22	12	8	1	1		
4	B	1	Total	C	H	O	S	0	0
			22	12	8	1	1		
4	C	1	Total	C	H	O	S	0	0
			22	12	8	1	1		
4	D	1	Total	C	H	O	S	0	0
			22	12	8	1	1		

- Molecule 5 is GLYCEROL (three-letter code: GOL) (formula: $C_3H_8O_3$).



Mol	Chain	Residues	Atoms				ZeroOcc	AltConf
5	B	1	Total	C	H	O	0	0
			14	3	8	3		
5	D	1	Total	C	H	O	0	0
			14	3	8	3		

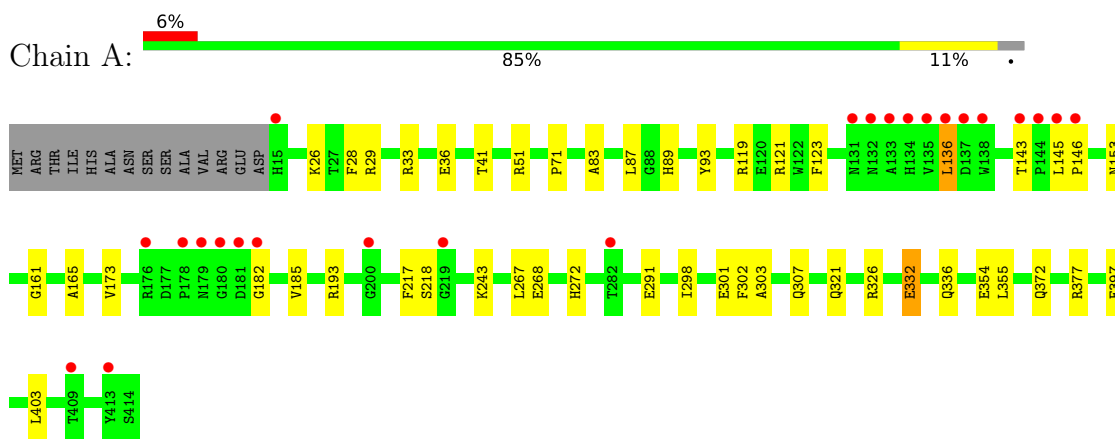
- Molecule 6 is water.

Mol	Chain	Residues	Atoms		ZeroOcc	AltConf
6	A	393	Total	O	0	0
			393	393		
6	B	465	Total	O	0	0
			465	465		
6	C	457	Total	O	0	0
			457	457		
6	D	499	Total	O	0	0
			499	499		

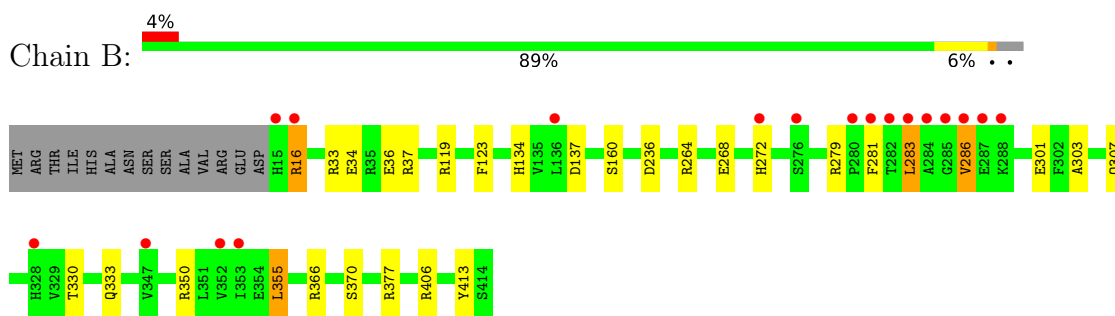
3 Residue-property plots [i](#)

These plots are drawn for all protein, RNA, DNA and oligosaccharide chains in the entry. The first graphic for a chain summarises the proportions of the various outlier classes displayed in the second graphic. The second graphic shows the sequence view annotated by issues in geometry and electron density. Residues are color-coded according to the number of geometric quality criteria for which they contain at least one outlier: green = 0, yellow = 1, orange = 2 and red = 3 or more. A red dot above a residue indicates a poor fit to the electron density ($RSRZ > 2$). Stretches of 2 or more consecutive residues without any outlier are shown as a green connector. Residues present in the sample, but not in the model, are shown in grey.

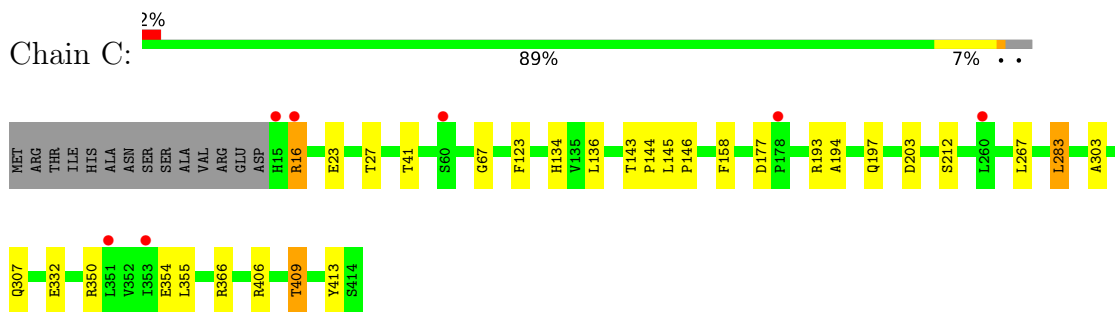
- Molecule 1: Thermophilic dibenzothiophene desulfurization enzyme C



- Molecule 1: Thermophilic dibenzothiophene desulfurization enzyme C

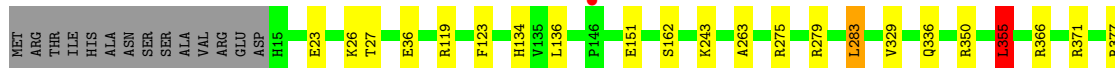


- Molecule 1: Thermophilic dibenzothiophene desulfurization enzyme C



- Molecule 1: Thermophilic dibenzothiophene desulfurization enzyme C

Chain D:  91% 5%



4 Data and refinement statistics

Property	Value	Source
Space group	P 41 21 2	Depositor
Cell constants a, b, c, α , β , γ	100.83Å 100.83Å 425.67Å 90.00° 90.00° 90.00°	Depositor
Resolution (Å)	47.51 – 1.75 47.51 – 1.75	Depositor EDS
% Data completeness (in resolution range)	98.2 (47.51-1.75) 98.2 (47.51-1.75)	Depositor EDS
R_{merge}	(Not available)	Depositor
R_{sym}	(Not available)	Depositor
$\langle I/\sigma(I) \rangle$ ¹	1.41 (at 1.75Å)	Xtrriage
Refinement program	PHENIX (1.10.1_2155)	Depositor
R, R_{free}	0.176 , 0.212 0.177 , 0.213	Depositor DCC
R_{free} test set	10911 reflections (5.00%)	wwPDB-VP
Wilson B-factor (Å ²)	22.2	Xtrriage
Anisotropy	0.031	Xtrriage
Bulk solvent k_{sol} (e/Å ³), B_{sol} (Å ²)	0.36 , 52.8	EDS
L-test for twinning ²	$\langle L \rangle = 0.42$, $\langle L^2 \rangle = 0.24$	Xtrriage
Estimated twinning fraction	No twinning to report.	Xtrriage
F_o, F_c correlation	0.96	EDS
Total number of atoms	14596	wwPDB-VP
Average B, all atoms (Å ²)	24.0	wwPDB-VP

Xtrriage's analysis on translational NCS is as follows: *The largest off-origin peak in the Patterson function is 2.73% of the height of the origin peak. No significant pseudotranslation is detected.*

¹Intensities estimated from amplitudes.

²Theoretical values of $\langle |L| \rangle$, $\langle L^2 \rangle$ for acentric reflections are 0.5, 0.333 respectively for untwinned datasets, and 0.375, 0.2 for perfectly twinned datasets.

5 Model quality [i](#)

5.1 Standard geometry [i](#)

Bond lengths and bond angles in the following residue types are not validated in this section: FMN, SO4, 83U, GOL

The Z score for a bond length (or angle) is the number of standard deviations the observed value is removed from the expected value. A bond length (or angle) with $|Z| > 5$ is considered an outlier worth inspection. RMSZ is the root-mean-square of all Z scores of the bond lengths (or angles).

Mol	Chain	Bond lengths		Bond angles	
		RMSZ	# Z >5	RMSZ	# Z >5
1	A	0.38	1/3179 (0.0%)	0.52	1/4325 (0.0%)
1	B	0.36	0/3188	0.53	1/4336 (0.0%)
1	C	0.36	1/3187 (0.0%)	0.54	2/4335 (0.0%)
1	D	0.35	0/3195	0.53	2/4345 (0.0%)
All	All	0.36	2/12749 (0.0%)	0.53	6/17341 (0.0%)

All (2) bond length outliers are listed below:

Mol	Chain	Res	Type	Atoms	Z	Observed(Å)	Ideal(Å)
1	A	41	THR	C-N	5.89	1.45	1.34
1	C	41	THR	C-N	5.16	1.44	1.34

All (6) bond angle outliers are listed below:

Mol	Chain	Res	Type	Atoms	Z	Observed(°)	Ideal(°)
1	B	355	LEU	CA-CB-CG	6.88	131.12	115.30
1	C	355	LEU	CA-CB-CG	6.59	130.45	115.30
1	D	283	LEU	CA-CB-CG	5.61	128.21	115.30
1	A	355	LEU	CA-CB-CG	5.52	128.00	115.30
1	D	355	LEU	CA-CB-CG	5.52	127.99	115.30
1	C	267	LEU	CA-CB-CG	5.01	126.81	115.30

There are no chirality outliers.

There are no planarity outliers.

5.2 Too-close contacts [i](#)

In the following table, the Non-H and H(model) columns list the number of non-hydrogen atoms and hydrogen atoms in the chain respectively. The H(added) column lists the number of hydrogen

atoms added and optimized by MolProbity. The Clashes column lists the number of clashes within the asymmetric unit, whereas Symm-Clashes lists symmetry-related clashes.

Mol	Chain	Non-H	H(model)	H(added)	Clashes	Symm-Clashes
1	A	3102	0	3008	30	0
1	B	3111	0	3014	21	0
1	C	3110	0	3019	22	0
1	D	3118	0	3027	20	0
2	A	31	19	19	0	0
2	B	31	19	19	1	0
2	C	31	19	19	0	0
2	D	31	19	19	1	0
3	A	10	0	0	0	0
3	B	5	0	0	0	0
3	C	5	0	0	0	0
3	D	5	0	0	0	0
4	A	14	8	0	0	0
4	B	14	8	0	0	0
4	C	14	8	0	0	0
4	D	14	8	0	0	0
5	B	6	8	8	0	0
5	D	6	8	8	0	0
6	A	393	0	0	11	0
6	B	465	0	0	9	1
6	C	457	0	0	8	0
6	D	499	0	0	7	1
All	All	14472	124	12160	85	1

The all-atom clashscore is defined as the number of clashes found per 1000 atoms (including hydrogen atoms). The all-atom clashscore for this structure is 3.

All (85) close contacts within the same asymmetric unit are listed below, sorted by their clash magnitude.

Atom-1	Atom-2	Interatomic distance (Å)	Clash overlap (Å)
1:C:366:ARG:HD3	2:D:501:FMN:O3P	1.83	0.77
1:C:145:LEU:HB3	1:C:146:PRO:HD2	1.69	0.75
1:B:119:ARG:NH1	6:B:602:HOH:O	2.19	0.73
1:A:119:ARG:HD3	6:A:857:HOH:O	1.87	0.73
1:B:350:ARG:NH2	6:B:605:HOH:O	2.24	0.71
1:D:162:SER:OG	6:D:601:HOH:O	2.01	0.70
1:B:34:GLU:HG3	6:B:750:HOH:O	1.94	0.68
1:C:303:ALA:O	1:C:307:GLN:HG2	1.95	0.67
1:C:67:GLY:O	6:C:603:HOH:O	2.13	0.65

Continued on next page...

Continued from previous page...

Atom-1	Atom-2	Interatomic distance (Å)	Clash overlap (Å)
1:C:350:ARG:NH1	6:C:601:HOH:O	2.08	0.65
1:A:119:ARG:NH1	6:A:606:HOH:O	2.29	0.65
1:D:151:GLU:OE2	6:D:603:HOH:O	2.14	0.65
1:A:173:VAL:CG1	1:A:182:GLY:HA2	2.28	0.63
1:A:291:GLU:HG3	6:A:953:HOH:O	1.98	0.62
1:A:298:ILE:HD11	6:A:920:HOH:O	2.01	0.60
1:A:143:THR:HG23	6:A:724:HOH:O	2.02	0.59
1:B:281:PHE:O	1:B:286:VAL:HG13	2.04	0.58
1:B:279:ARG:HD2	1:B:366:ARG:NH1	2.20	0.56
1:A:303:ALA:O	1:A:307:GLN:HG2	2.06	0.56
6:B:608:HOH:O	1:C:406:ARG:NH1	2.39	0.55
1:D:279:ARG:HG3	1:D:366:ARG:NH2	2.22	0.54
1:B:330:THR:OG1	1:B:333:GLN:HG3	2.06	0.54
1:B:36:GLU:HG2	1:B:377:ARG:HD3	1.89	0.54
1:A:161:GLY:O	1:A:165:ALA:HB2	2.07	0.53
1:B:350:ARG:HG3	6:C:620:HOH:O	2.07	0.53
1:B:301:GLU:HG2	6:B:972:HOH:O	2.09	0.52
1:D:36:GLU:HG2	1:D:377:ARG:HD3	1.92	0.51
1:A:33:ARG:HD2	1:A:372:GLN:O	2.10	0.51
1:B:236:ASP:OD2	6:B:603:HOH:O	2.19	0.51
1:C:366:ARG:NH2	6:C:616:HOH:O	2.43	0.51
1:A:272:HIS:ND1	6:A:607:HOH:O	2.30	0.51
1:B:272:HIS:HD2	6:B:751:HOH:O	1.93	0.50
1:C:23:GLU:O	1:C:27:THR:HG23	2.13	0.49
1:C:197:GLN:HG2	6:C:661:HOH:O	2.13	0.49
1:A:243:LYS:HE3	1:A:326:ARG:O	2.12	0.48
1:B:134:HIS:CE1	1:B:137:ASP:HB2	2.47	0.48
1:A:397:GLU:HG3	6:A:783:HOH:O	2.14	0.48
1:C:409:THR:HG22	6:C:693:HOH:O	2.13	0.48
1:B:33:ARG:O	1:B:37:ARG:HG3	2.14	0.48
6:A:872:HOH:O	1:D:350:ARG:HG3	2.13	0.48
1:A:302:PHE:CZ	1:A:354:GLU:HG2	2.49	0.47
1:B:303:ALA:O	1:B:307:GLN:HG2	2.14	0.46
1:C:283:LEU:CD1	1:D:136:LEU:HD21	2.44	0.46
1:A:301:GLU:OE2	6:A:601:HOH:O	2.20	0.46
1:A:36:GLU:HG2	1:A:377:ARG:HD3	1.97	0.46
1:A:267:LEU:HG	1:D:402:PHE:CE2	2.50	0.46
1:A:28:PHE:CE2	1:A:87:LEU:HD13	2.51	0.46
1:A:29:ARG:HG3	1:A:83:ALA:HB1	1.97	0.46
1:A:268:GLU:HG2	6:A:615:HOH:O	2.15	0.45
1:A:51:ARG:HG2	1:A:121:ARG:HH12	1.82	0.45

Continued on next page...

Continued from previous page...

Atom-1	Atom-2	Interatomic distance (Å)	Clash overlap (Å)
1:C:134:HIS:CE1	1:C:136:LEU:HB2	2.52	0.44
1:C:143:THR:HG23	6:C:707:HOH:O	2.17	0.44
1:A:89:HIS:CE1	1:A:93:TYR:CE2	3.05	0.44
1:A:332:GLU:O	1:A:336:GLN:HG3	2.17	0.44
1:B:413:TYR:OH	6:B:604:HOH:O	2.20	0.44
1:D:119:ARG:NH1	6:D:602:HOH:O	2.07	0.44
1:D:336:GLN:NE2	6:D:615:HOH:O	2.44	0.44
1:D:371:ARG:HD3	6:D:916:HOH:O	2.16	0.44
1:B:406:ARG:NH2	6:B:619:HOH:O	2.51	0.44
1:D:243:LYS:HG3	1:D:329:VAL:CG2	2.48	0.43
1:C:144:PRO:HG2	1:C:177:ASP:HA	2.00	0.43
1:C:413:TYR:CE2	1:D:283:LEU:HD21	2.54	0.43
1:D:26:LYS:HE2	6:D:983:HOH:O	2.17	0.43
1:A:136:LEU:HD11	1:B:283:LEU:CD2	2.47	0.43
1:D:23:GLU:O	1:D:27:THR:HG23	2.18	0.43
1:A:173:VAL:HG13	1:A:182:GLY:HA2	2.00	0.43
1:A:153:ASN:HA	1:A:217:PHE:O	2.20	0.42
1:A:71:PRO:HD3	1:A:321:GLN:HB2	2.01	0.42
1:C:193:ARG:HG3	1:C:194:ALA:N	2.34	0.42
1:A:145:LEU:HB3	1:A:146:PRO:HD2	2.02	0.42
1:A:26:LYS:NZ	6:A:627:HOH:O	2.53	0.42
1:A:403:LEU:O	1:D:275:ARG:HD3	2.20	0.41
1:D:134:HIS:CE1	1:D:136:LEU:HB2	2.55	0.41
1:B:16:ARG:HE	1:B:16:ARG:HB3	1.78	0.41
1:C:350:ARG:O	1:C:354:GLU:HG3	2.20	0.41
1:A:136:LEU:HD11	1:B:283:LEU:HD23	2.02	0.41
1:C:158:PHE:HA	1:C:212:SER:O	2.21	0.41
1:B:264:ARG:O	1:B:268:GLU:HG3	2.21	0.41
1:C:283:LEU:HD13	1:D:413:TYR:CD2	2.55	0.41
1:C:136:LEU:HA	1:C:136:LEU:HD23	1.74	0.40
1:D:119:ARG:HD3	6:D:602:HOH:O	2.21	0.40
1:C:203:ASP:OD2	1:D:371:ARG:NH2	2.55	0.40
1:C:16:ARG:NH1	6:C:628:HOH:O	2.53	0.40
1:B:160:SER:HB2	2:B:501:FMN:O4	2.21	0.40
1:D:263:ALA:HB1	1:D:355:LEU:HD21	2.03	0.40

All (1) symmetry-related close contacts are listed below. The label for Atom-2 includes the symmetry operator and encoded unit-cell translations to be applied.

Atom-1	Atom-2	Interatomic distance (Å)	Clash overlap (Å)
6:B:951:HOH:O	6:D:958:HOH:O[1_565]	2.15	0.05

5.3 Torsion angles [i](#)

5.3.1 Protein backbone [i](#)

In the following table, the Percentiles column shows the percent Ramachandran outliers of the chain as a percentile score with respect to all X-ray entries followed by that with respect to entries of similar resolution.

The Analysed column shows the number of residues for which the backbone conformation was analysed, and the total number of residues.

Mol	Chain	Analysed	Favoured	Allowed	Outliers	Percentiles	
1	A	398/414 (96%)	390 (98%)	8 (2%)	0	100	100
1	B	398/414 (96%)	393 (99%)	5 (1%)	0	100	100
1	C	398/414 (96%)	392 (98%)	6 (2%)	0	100	100
1	D	398/414 (96%)	392 (98%)	6 (2%)	0	100	100
All	All	1592/1656 (96%)	1567 (98%)	25 (2%)	0	100	100

There are no Ramachandran outliers to report.

5.3.2 Protein sidechains [i](#)

In the following table, the Percentiles column shows the percent sidechain outliers of the chain as a percentile score with respect to all X-ray entries followed by that with respect to entries of similar resolution.

The Analysed column shows the number of residues for which the sidechain conformation was analysed, and the total number of residues.

Mol	Chain	Analysed	Rotameric	Outliers	Percentiles	
1	A	313/331 (95%)	307 (98%)	6 (2%)	57	36
1	B	315/331 (95%)	309 (98%)	6 (2%)	57	36
1	C	315/331 (95%)	310 (98%)	5 (2%)	62	44
1	D	317/331 (96%)	315 (99%)	2 (1%)	86	79
All	All	1260/1324 (95%)	1241 (98%)	19 (2%)	65	47

All (19) residues with a non-rotameric sidechain are listed below:

Mol	Chain	Res	Type
1	A	123	PHE
1	A	136	LEU

Continued on next page...

Continued from previous page...

Mol	Chain	Res	Type
1	A	185	VAL
1	A	193	ARG
1	A	218	SER
1	A	332	GLU
1	B	16	ARG
1	B	123	PHE
1	B	283	LEU
1	B	286	VAL
1	B	355	LEU
1	B	370	SER
1	C	16	ARG
1	C	123	PHE
1	C	283	LEU
1	C	332	GLU
1	C	409	THR
1	D	123	PHE
1	D	355	LEU

Sometimes sidechains can be flipped to improve hydrogen bonding and reduce clashes. There are no such sidechains identified.

5.3.3 RNA [i](#)

There are no RNA molecules in this entry.

5.4 Non-standard residues in protein, DNA, RNA chains [i](#)

There are no non-standard protein/DNA/RNA residues in this entry.

5.5 Carbohydrates [i](#)

There are no monosaccharides in this entry.

5.6 Ligand geometry [i](#)

15 ligands are modelled in this entry.

In the following table, the Counts columns list the number of bonds (or angles) for which Mogul statistics could be retrieved, the number of bonds (or angles) that are observed in the model and the number of bonds (or angles) that are defined in the Chemical Component Dictionary. The

Link column lists molecule types, if any, to which the group is linked. The Z score for a bond length (or angle) is the number of standard deviations the observed value is removed from the expected value. A bond length (or angle) with $|Z| > 2$ is considered an outlier worth inspection. RMSZ is the root-mean-square of all Z scores of the bond lengths (or angles).

Mol	Type	Chain	Res	Link	Bond lengths			Bond angles		
					Counts	RMSZ	# Z > 2	Counts	RMSZ	# Z > 2
4	83U	D	503	-	14,16,16	6.58	2 (14%)	19,23,23	3.20	1 (5%)
4	83U	C	503	-	14,16,16	6.88	2 (14%)	19,23,23	3.43	1 (5%)
5	GOL	B	504	-	5,5,5	0.53	0	5,5,5	0.40	0
2	FMN	A	501	-	33,33,33	1.18	3 (9%)	48,50,50	1.46	9 (18%)
3	SO4	A	502	-	4,4,4	0.15	0	6,6,6	0.14	0
3	SO4	B	502	-	4,4,4	0.14	0	6,6,6	0.15	0
3	SO4	A	503	-	4,4,4	0.12	0	6,6,6	0.17	0
2	FMN	C	501	-	33,33,33	1.07	2 (6%)	48,50,50	1.28	6 (12%)
4	83U	B	503	-	14,16,16	6.70	2 (14%)	19,23,23	3.29	1 (5%)
2	FMN	B	501	-	33,33,33	1.01	2 (6%)	48,50,50	1.28	6 (12%)
3	SO4	D	502	-	4,4,4	0.12	0	6,6,6	0.17	0
4	83U	A	504	-	14,16,16	7.48	2 (14%)	19,23,23	3.88	1 (5%)
5	GOL	D	504	-	5,5,5	0.52	0	5,5,5	0.36	0
2	FMN	D	501	-	33,33,33	1.08	2 (6%)	48,50,50	1.27	6 (12%)
3	SO4	C	502	-	4,4,4	0.15	0	6,6,6	0.14	0

In the following table, the Chirals column lists the number of chiral outliers, the number of chiral centers analysed, the number of these observed in the model and the number defined in the Chemical Component Dictionary. Similar counts are reported in the Torsion and Rings columns. '-' means no outliers of that kind were identified.

Mol	Type	Chain	Res	Link	Chirals	Torsions	Rings
4	83U	D	503	-	-	-	0/3/3/3
5	GOL	B	504	-	-	0/4/4/4	-
4	83U	C	503	-	-	-	0/3/3/3
2	FMN	A	501	-	-	4/18/18/18	0/3/3/3
2	FMN	C	501	-	-	2/18/18/18	0/3/3/3
4	83U	B	503	-	-	-	0/3/3/3
2	FMN	B	501	-	-	0/18/18/18	0/3/3/3
4	83U	A	504	-	-	-	0/3/3/3
5	GOL	D	504	-	-	0/4/4/4	-
2	FMN	D	501	-	-	0/18/18/18	0/3/3/3

All (17) bond length outliers are listed below:

Mol	Chain	Res	Type	Atoms	Z	Observed(Å)	Ideal(Å)
4	A	504	83U	C3-S1	-19.84	1.43	1.79
4	A	504	83U	C4-S1	-19.64	1.43	1.79
4	C	503	83U	C4-S1	-18.34	1.45	1.79
4	C	503	83U	C3-S1	-17.94	1.46	1.79
4	B	503	83U	C4-S1	-17.94	1.46	1.79
4	D	503	83U	C4-S1	-17.79	1.46	1.79
4	B	503	83U	C3-S1	-17.35	1.47	1.79
4	D	503	83U	C3-S1	-16.86	1.48	1.79
2	A	501	FMN	C4A-N5	4.00	1.38	1.30
2	C	501	FMN	C4A-N5	3.96	1.38	1.30
2	D	501	FMN	C4A-N5	3.73	1.38	1.30
2	B	501	FMN	C4A-N5	3.20	1.37	1.30
2	A	501	FMN	C10-N1	2.67	1.38	1.33
2	B	501	FMN	C10-N1	2.31	1.37	1.33
2	C	501	FMN	C10-N1	2.24	1.37	1.33
2	D	501	FMN	C10-N1	2.23	1.37	1.33
2	A	501	FMN	C5'-C4'	2.16	1.54	1.51

All (31) bond angle outliers are listed below:

Mol	Chain	Res	Type	Atoms	Z	Observed(°)	Ideal(°)
4	A	504	83U	C3-S1-C4	16.59	100.10	89.45
4	C	503	83U	C3-S1-C4	14.58	98.81	89.45
4	B	503	83U	C3-S1-C4	13.93	98.39	89.45
4	D	503	83U	C3-S1-C4	13.56	98.15	89.45
2	A	501	FMN	C5A-C9A-N10	3.45	121.52	117.95
2	C	501	FMN	C4A-C10-N10	3.39	121.43	116.48
2	B	501	FMN	C4A-C10-N10	3.17	121.11	116.48
2	A	501	FMN	C4-N3-C2	-3.10	119.91	125.64
2	D	501	FMN	C4A-C10-N10	3.00	120.87	116.48
2	C	501	FMN	C4-N3-C2	-2.95	120.19	125.64
2	D	501	FMN	C4-N3-C2	-2.89	120.31	125.64
2	B	501	FMN	C4-N3-C2	-2.75	120.56	125.64
2	A	501	FMN	C4A-C10-N10	2.71	120.44	116.48
2	A	501	FMN	C9A-C5A-N5	-2.57	119.64	122.43
2	A	501	FMN	C4A-C4-N3	2.57	119.71	113.19
2	B	501	FMN	C4A-C4-N3	2.55	119.66	113.19
2	C	501	FMN	C4A-C4-N3	2.50	119.54	113.19
2	A	501	FMN	O4-C4-C4A	-2.49	120.00	126.60
2	B	501	FMN	C5A-C9A-N10	2.46	120.50	117.95
2	D	501	FMN	C4A-C4-N3	2.46	119.43	113.19
2	A	501	FMN	C4A-C10-N1	-2.41	119.14	124.73
2	B	501	FMN	C4A-C10-N1	-2.40	119.15	124.73

Continued on next page...

Continued from previous page...

Mol	Chain	Res	Type	Atoms	Z	Observed(°)	Ideal(°)
2	C	501	FMN	C10-C4A-N5	-2.36	119.84	124.86
2	D	501	FMN	C4A-C10-N1	-2.34	119.31	124.73
2	D	501	FMN	C10-C4A-N5	-2.24	120.10	124.86
2	B	501	FMN	C10-C4A-N5	-2.19	120.21	124.86
2	C	501	FMN	C4A-C10-N1	-2.11	119.84	124.73
2	C	501	FMN	O4-C4-C4A	-2.10	121.04	126.60
2	A	501	FMN	C4-C4A-C10	2.09	120.31	116.79
2	D	501	FMN	C4-C4A-C10	2.07	120.27	116.79
2	A	501	FMN	C10-C4A-N5	-2.01	120.58	124.86

There are no chirality outliers.

All (6) torsion outliers are listed below:

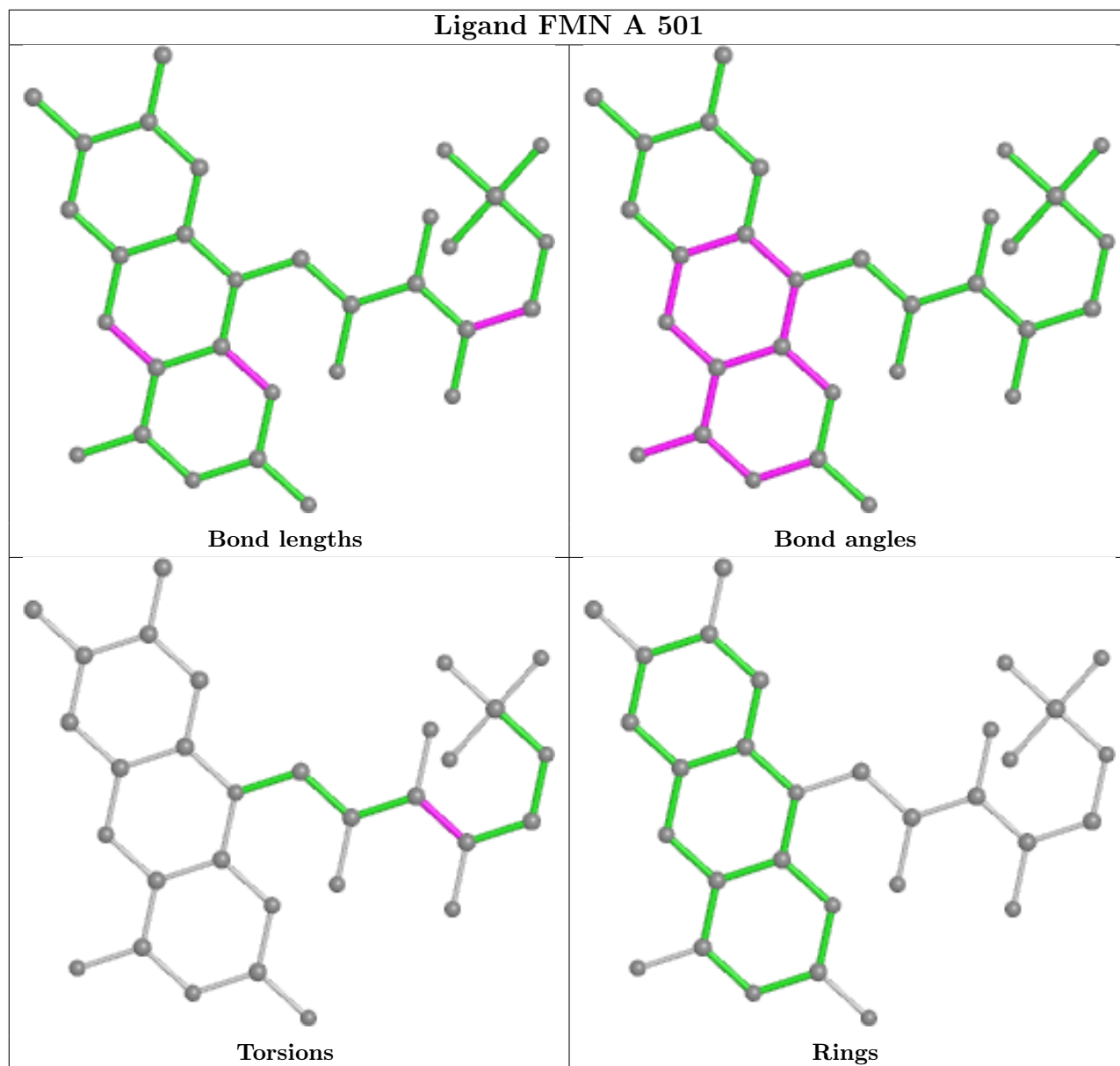
Mol	Chain	Res	Type	Atoms
2	A	501	FMN	C2'-C3'-C4'-O4'
2	A	501	FMN	O3'-C3'-C4'-O4'
2	A	501	FMN	O3'-C3'-C4'-C5'
2	A	501	FMN	C2'-C3'-C4'-C5'
2	C	501	FMN	C2'-C3'-C4'-O4'
2	C	501	FMN	C3'-C4'-C5'-O5'

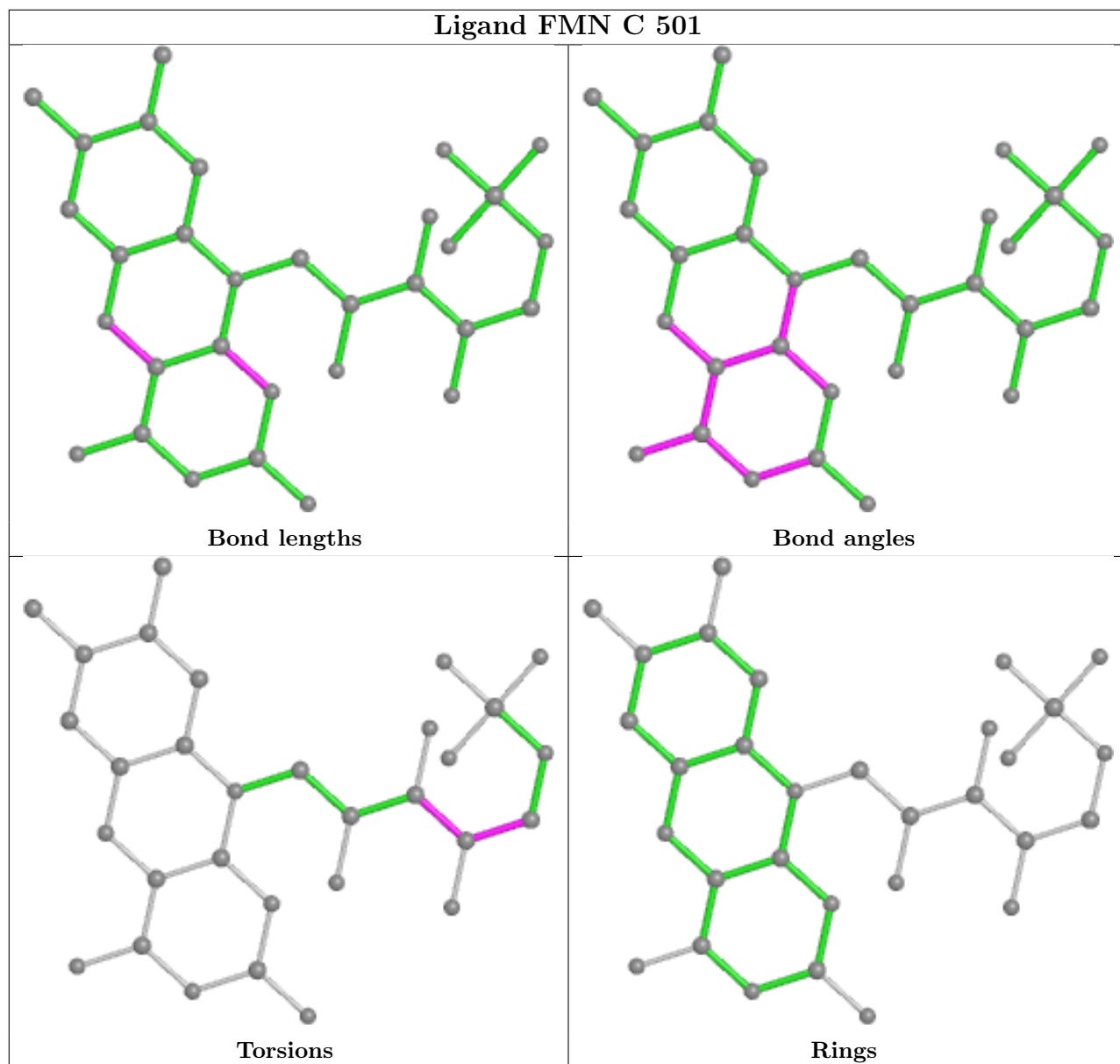
There are no ring outliers.

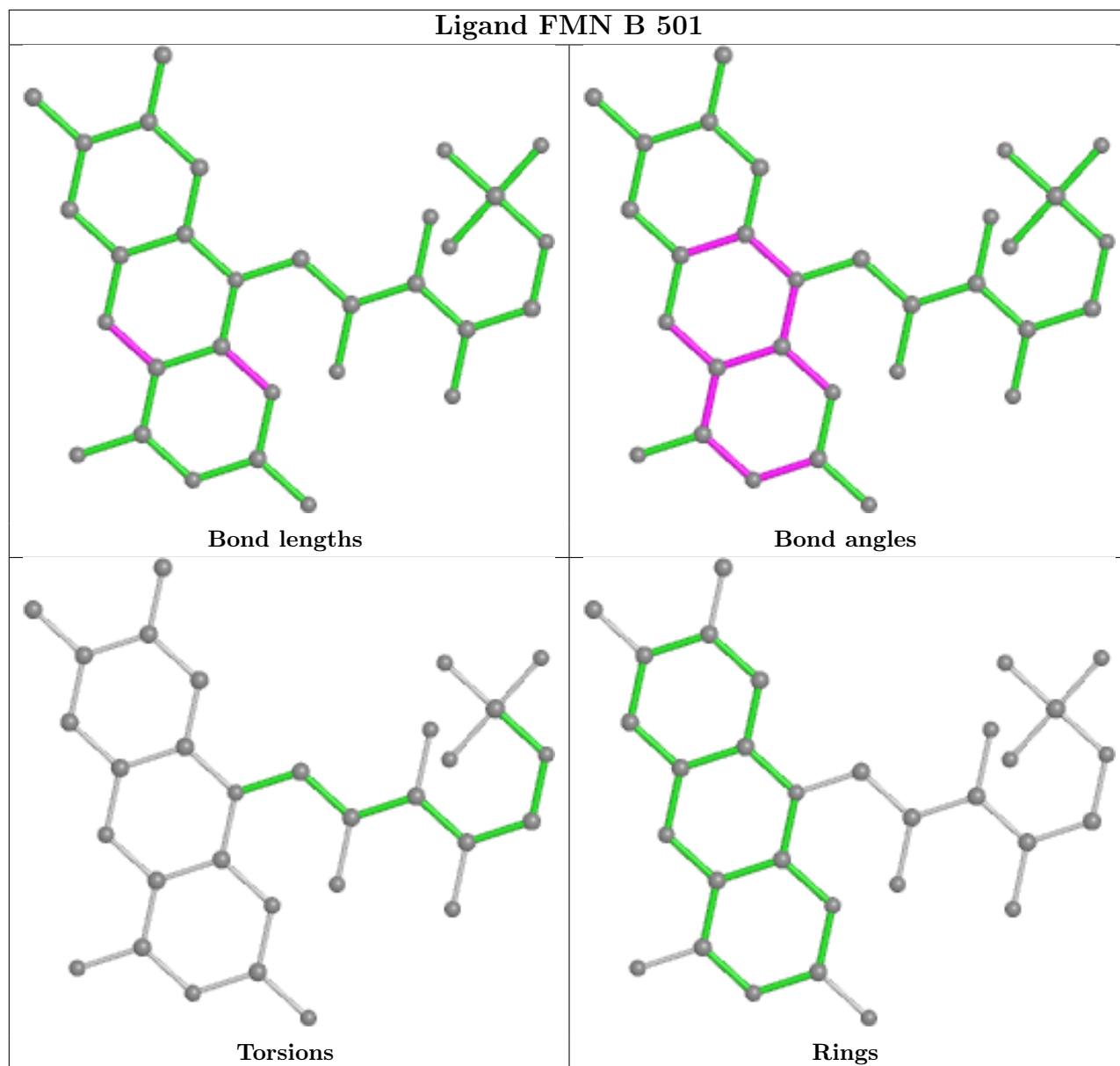
2 monomers are involved in 2 short contacts:

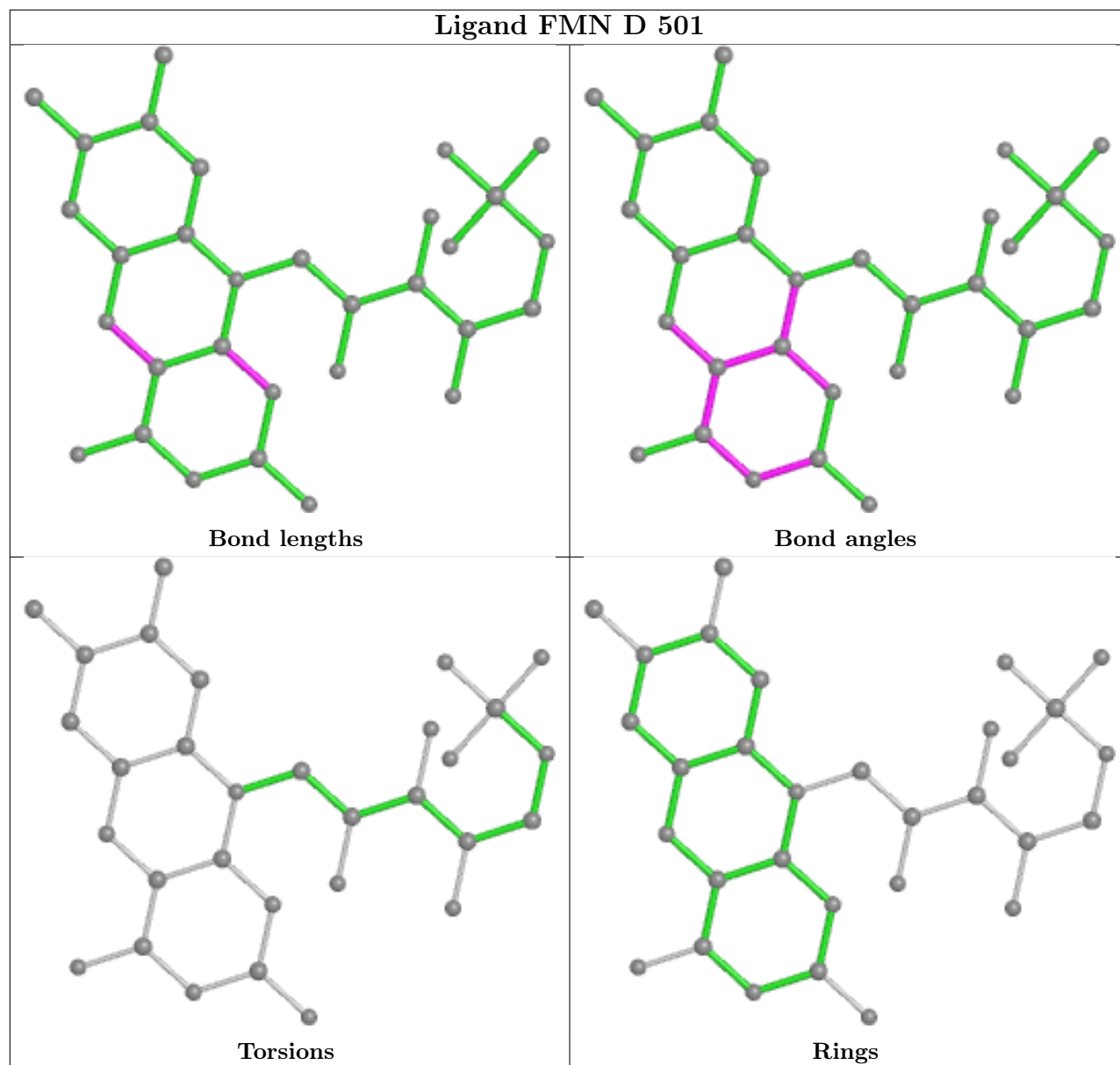
Mol	Chain	Res	Type	Clashes	Symm-Clashes
2	B	501	FMN	1	0
2	D	501	FMN	1	0

The following is a two-dimensional graphical depiction of Mogul quality analysis of bond lengths, bond angles, torsion angles, and ring geometry for all instances of the Ligand of Interest. In addition, ligands with molecular weight > 250 and outliers as shown on the validation Tables will also be included. For torsion angles, if less than 5% of the Mogul distribution of torsion angles is within 10 degrees of the torsion angle in question, then that torsion angle is considered an outlier. Any bond that is central to one or more torsion angles identified as an outlier by Mogul will be highlighted in the graph. For rings, the root-mean-square deviation (RMSD) between the ring in question and similar rings identified by Mogul is calculated over all ring torsion angles. If the average RMSD is greater than 60 degrees and the minimal RMSD between the ring in question and any Mogul-identified rings is also greater than 60 degrees, then that ring is considered an outlier. The outliers are highlighted in purple. The color gray indicates Mogul did not find sufficient equivalents in the CSD to analyse the geometry.









5.7 Other polymers [i](#)

There are no such residues in this entry.

5.8 Polymer linkage issues [i](#)

There are no chain breaks in this entry.

6 Fit of model and data [i](#)

6.1 Protein, DNA and RNA chains [i](#)

In the following table, the column labelled ‘#RSRZ > 2’ contains the number (and percentage) of RSRZ outliers, followed by percent RSRZ outliers for the chain as percentile scores relative to all X-ray entries and entries of similar resolution. The OWAB column contains the minimum, median, 95th percentile and maximum values of the occupancy-weighted average B-factor per residue. The column labelled ‘Q < 0.9’ lists the number of (and percentage) of residues with an average occupancy less than 0.9.

Mol	Chain	Analysed	<RSRZ>	#RSRZ>2	OWAB(Å ²)	Q<0.9
1	A	400/414 (96%)	0.28	24 (6%) 21 26	13, 23, 42, 64	0
1	B	400/414 (96%)	0.18	18 (4%) 33 38	12, 20, 40, 52	0
1	C	400/414 (96%)	0.16	7 (1%) 68 74	12, 22, 37, 56	0
1	D	400/414 (96%)	-0.07	1 (0%) 94 95	13, 20, 34, 49	0
All	All	1600/1656 (96%)	0.14	50 (3%) 49 55	12, 21, 38, 64	0

All (50) RSRZ outliers are listed below:

Mol	Chain	Res	Type	RSRZ
1	A	133	ALA	6.0
1	A	146	PRO	5.3
1	A	136	LEU	5.2
1	B	136	LEU	5.1
1	B	285	GLY	5.0
1	A	145	LEU	4.9
1	A	137	ASP	4.9
1	A	134	HIS	4.8
1	B	282	THR	4.8
1	B	284	ALA	4.4
1	C	15	HIS	4.4
1	B	15	HIS	4.3
1	B	286	VAL	4.3
1	A	138	TRP	4.0
1	D	146	PRO	4.0
1	A	132	ASN	4.0
1	A	131	ASN	3.9
1	C	16	ARG	3.8
1	A	178	PRO	3.8
1	B	283	LEU	3.7
1	B	287	GLU	3.7

Continued on next page...

Continued from previous page...

Mol	Chain	Res	Type	RSRZ
1	A	176	ARG	3.6
1	A	135	VAL	3.4
1	A	413	TYR	3.2
1	A	143	THR	3.2
1	B	353	ILE	2.9
1	B	281	PHE	2.9
1	B	280	PRO	2.9
1	A	144	PRO	2.8
1	B	16	ARG	2.7
1	C	351	LEU	2.6
1	A	179	ASN	2.6
1	B	328	HIS	2.6
1	A	409	THR	2.5
1	A	180	GLY	2.5
1	B	347	VAL	2.3
1	B	276	SER	2.2
1	A	219	GLY	2.2
1	B	352	VAL	2.2
1	B	272	HIS	2.1
1	A	200	GLY	2.1
1	A	15	HIS	2.1
1	A	182	GLY	2.1
1	C	60	SER	2.1
1	A	282	THR	2.0
1	B	288	LYS	2.0
1	C	178	PRO	2.0
1	C	260	LEU	2.0
1	C	353	ILE	2.0
1	A	181	ASP	2.0

6.2 Non-standard residues in protein, DNA, RNA chains [i](#)

There are no non-standard protein/DNA/RNA residues in this entry.

6.3 Carbohydrates [i](#)

There are no monosaccharides in this entry.

6.4 Ligands

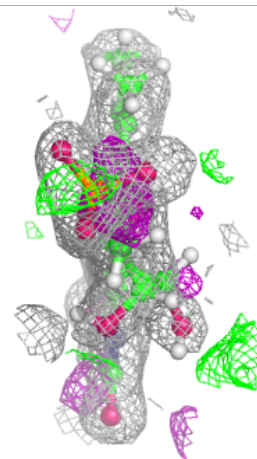
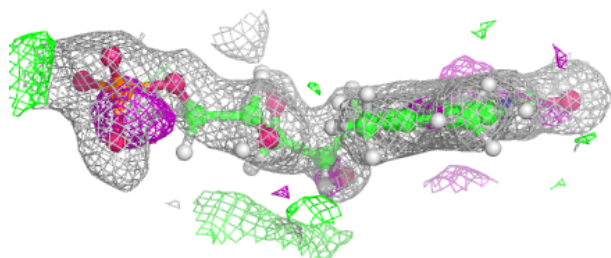
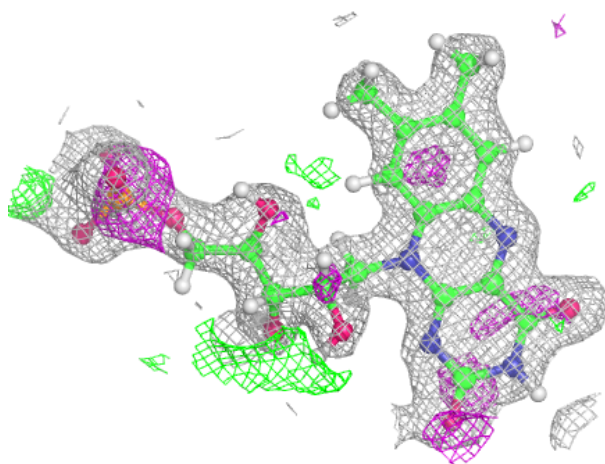
In the following table, the Atoms column lists the number of modelled atoms in the group and the number defined in the chemical component dictionary. The B-factors column lists the minimum, median, 95th percentile and maximum values of B factors of atoms in the group. The column labelled 'Q< 0.9' lists the number of atoms with occupancy less than 0.9.

Mol	Type	Chain	Res	Atoms	RSCC	RSR	B-factors(Å ²)	Q<0.9
4	83U	A	504	14/14	0.75	0.21	29,45,56,59	0
2	FMN	A	501	31/31	0.89	0.20	23,38,58,62	0
4	83U	C	503	14/14	0.89	0.12	17,27,32,34	0
4	83U	B	503	14/14	0.90	0.12	17,23,28,31	0
4	83U	D	503	14/14	0.92	0.11	15,23,29,31	0
5	GOL	B	504	6/6	0.92	0.10	25,31,38,40	0
2	FMN	D	501	31/31	0.95	0.08	16,20,28,31	0
2	FMN	B	501	31/31	0.95	0.08	13,21,35,38	0
5	GOL	D	504	6/6	0.95	0.10	27,33,37,43	0
2	FMN	C	501	31/31	0.96	0.08	17,22,29,33	0
3	SO4	D	502	5/5	0.97	0.15	39,40,43,44	0
3	SO4	C	502	5/5	0.98	0.12	38,38,44,47	0
3	SO4	A	502	5/5	0.98	0.07	35,38,43,49	0
3	SO4	A	503	5/5	0.98	0.09	39,44,46,50	0
3	SO4	B	502	5/5	0.98	0.19	40,40,44,48	0

The following is a graphical depiction of the model fit to experimental electron density of all instances of the Ligand of Interest. In addition, ligands with molecular weight > 250 and outliers as shown on the geometry validation Tables will also be included. Each fit is shown from different orientation to approximate a three-dimensional view.

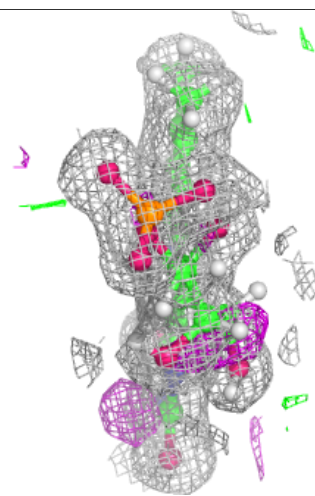
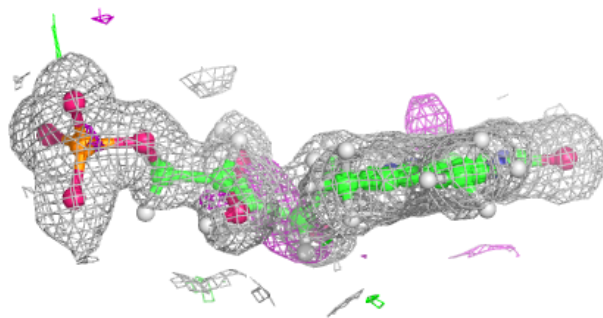
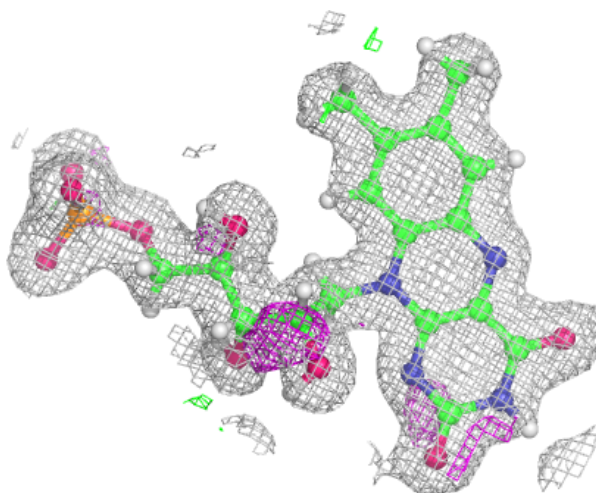
Electron density around FMN A 501:

$2mF_o-DF_c$ (at 0.7 rmsd) in gray
 mF_o-DF_c (at 3 rmsd) in purple (negative)
and green (positive)



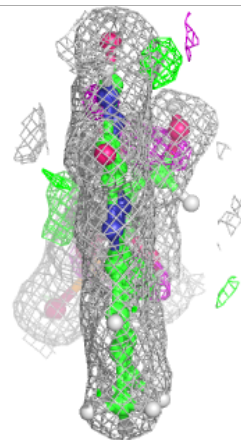
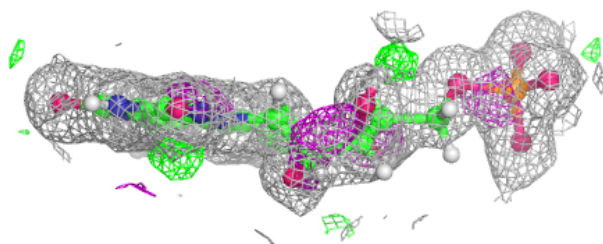
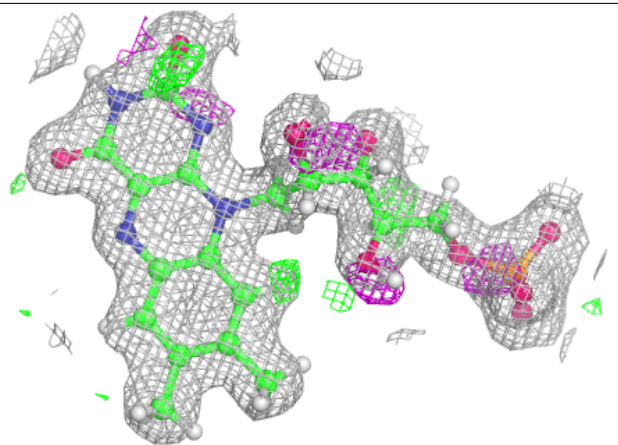
Electron density around FMN D 501:

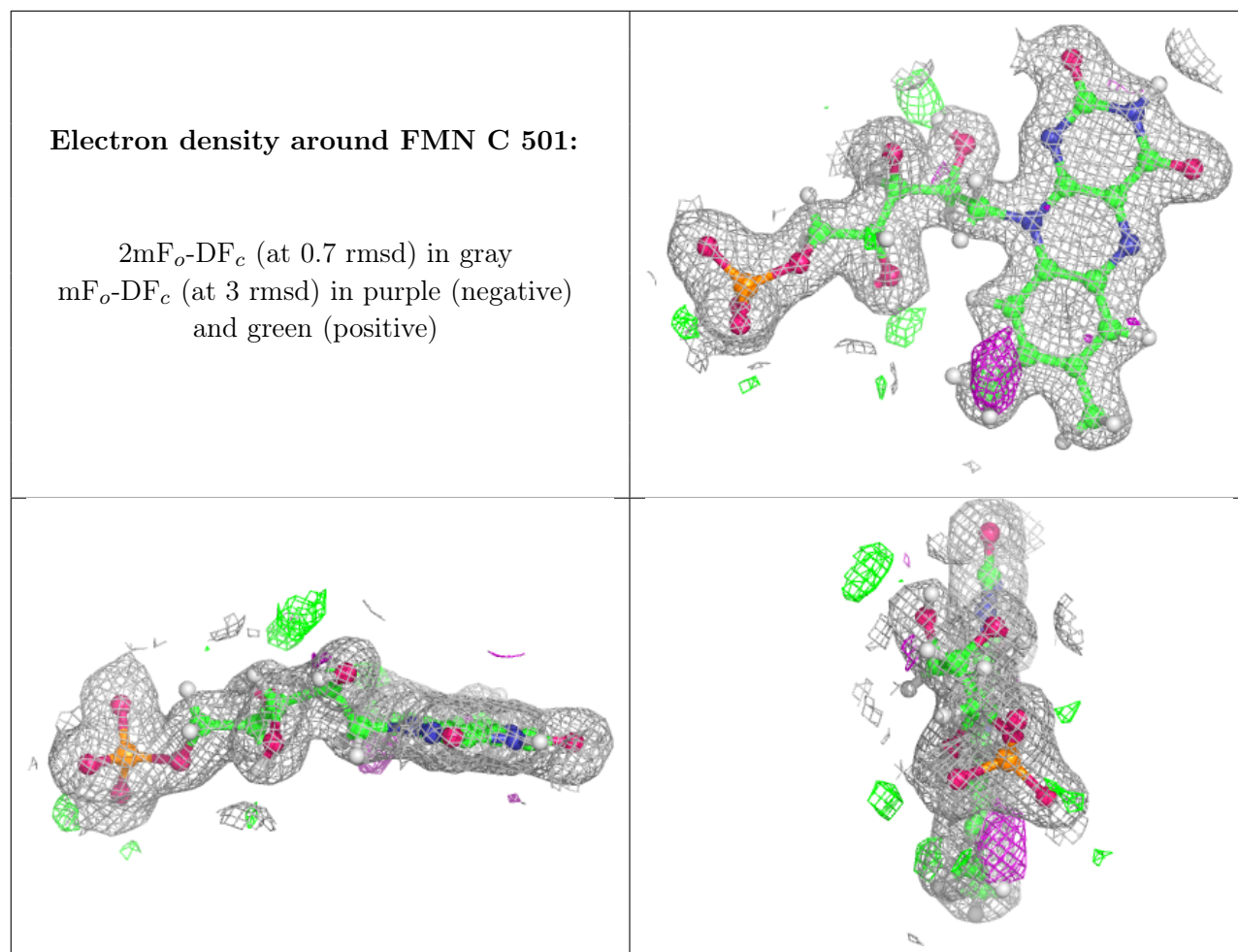
$2mF_o-DF_c$ (at 0.7 rmsd) in gray
 mF_o-DF_c (at 3 rmsd) in purple (negative)
and green (positive)



Electron density around FMN B 501:

$2mF_o-DF_c$ (at 0.7 rmsd) in gray
 mF_o-DF_c (at 3 rmsd) in purple (negative)
and green (positive)





6.5 Other polymers [i](#)

There are no such residues in this entry.