



# Full wwPDB X-ray Structure Validation Report ⓘ

Oct 10, 2023 – 01:31 PM JST

PDB ID : 7XDW  
Title : Crystal structure of a receptor like kinase from Arabidopsis  
Authors : Kong, Y.Q.; Ming, Z.H.  
Deposited on : 2022-03-29  
Resolution : 1.93 Å(reported)

This is a Full wwPDB X-ray Structure Validation Report for a publicly released PDB entry.

We welcome your comments at [validation@mail.wwpdb.org](mailto:validation@mail.wwpdb.org)

A user guide is available at

<https://www.wwpdb.org/validation/2017/XrayValidationReportHelp>

with specific help available everywhere you see the ⓘ symbol.

The types of validation reports are described at

<http://www.wwpdb.org/validation/2017/FAQs#types>.

---

The following versions of software and data (see [references ⓘ](#)) were used in the production of this report:

MolProbity : 4.02b-467  
Mogul : 1.8.5 (274361), CSD as541be (2020)  
Xtriage (Phenix) : 1.13  
EDS : 2.35.1  
buster-report : 1.1.7 (2018)  
Percentile statistics : 20191225.v01 (using entries in the PDB archive December 25th 2019)  
Refmac : 5.8.0158  
CCP4 : 7.0.044 (Gargrove)  
Ideal geometry (proteins) : Engh & Huber (2001)  
Ideal geometry (DNA, RNA) : Parkinson et al. (1996)  
Validation Pipeline (wwPDB-VP) : 2.35.1

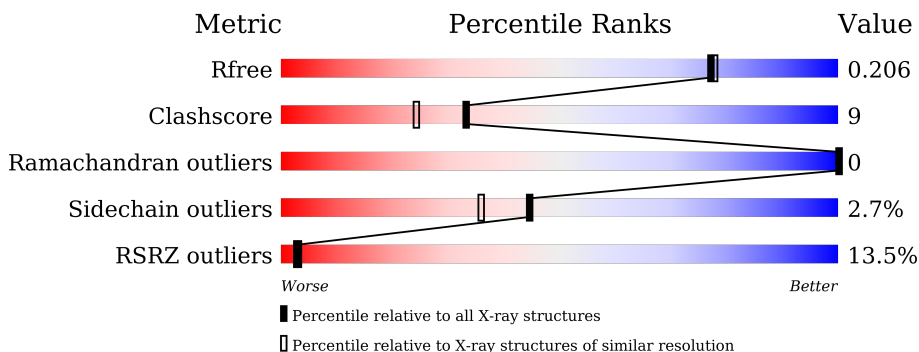
# 1 Overall quality at a glance

The following experimental techniques were used to determine the structure:

*X-RAY DIFFRACTION*

The reported resolution of this entry is 1.93 Å.

Percentile scores (ranging between 0-100) for global validation metrics of the entry are shown in the following graphic. The table shows the number of entries on which the scores are based.



Metric	Whole archive (#Entries)	Similar resolution (#Entries, resolution range(Å))
$R_{free}$	130704	7937 (1.94-1.90)
Clashscore	141614	8644 (1.94-1.90)
Ramachandran outliers	138981	8530 (1.94-1.90)
Sidechain outliers	138945	8530 (1.94-1.90)
RSRZ outliers	127900	7793 (1.94-1.90)

The table below summarises the geometric issues observed across the polymeric chains and their fit to the electron density. The red, orange, yellow and green segments of the lower bar indicate the fraction of residues that contain outliers for  $\geq 3$ , 2, 1 and 0 types of geometric quality criteria respectively. A grey segment represents the fraction of residues that are not modelled. The numeric value for each fraction is indicated below the corresponding segment, with a dot representing fractions  $\leq 5\%$ . The upper red bar (where present) indicates the fraction of residues that have poor fit to the electron density. The numeric value is given above the bar.

Mol	Chain	Length	Quality of chain
1	A	313	 14% 68% 19% • 10%
1	B	313	 10% 74% 15% • 10%

## 2 Entry composition [i](#)

There are 4 unique types of molecules in this entry. The entry contains 4724 atoms, of which 0 are hydrogens and 0 are deuteriums.

In the tables below, the ZeroOcc column contains the number of atoms modelled with zero occupancy, the AltConf column contains the number of residues with at least one atom in alternate conformation and the Trace column contains the number of residues modelled with at most 2 atoms.

- Molecule 1 is a protein called Receptor-like protein kinase FERONIA.

Mol	Chain	Residues	Atoms					ZeroOcc	AltConf	Trace
			Total	C	N	O	S			
1	A	281	2253	1439	389	409	16	0	0	0
1	B	281	2253	1439	389	410	15	0	0	0

There are 30 discrepancies between the modelled and reference sequences:

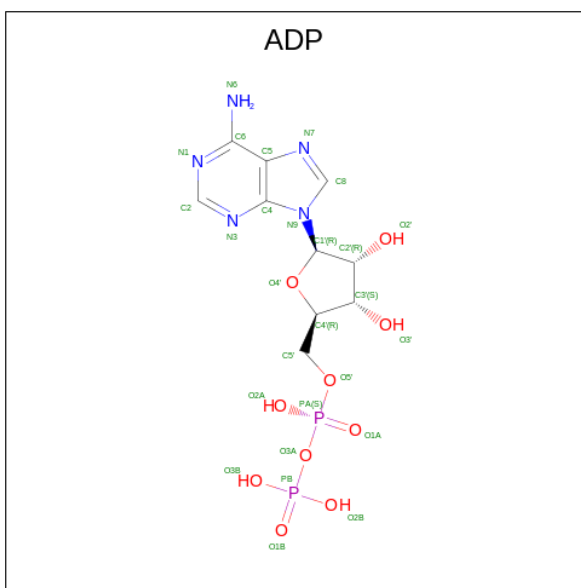
Chain	Residue	Modelled	Actual	Comment	Reference
A	504	MET	-	initiating methionine	UNP Q9SCZ4
A	505	GLY	-	expression tag	UNP Q9SCZ4
A	506	SER	-	expression tag	UNP Q9SCZ4
A	507	SER	-	expression tag	UNP Q9SCZ4
A	508	HIS	-	expression tag	UNP Q9SCZ4
A	509	HIS	-	expression tag	UNP Q9SCZ4
A	510	HIS	-	expression tag	UNP Q9SCZ4
A	511	HIS	-	expression tag	UNP Q9SCZ4
A	512	HIS	-	expression tag	UNP Q9SCZ4
A	513	HIS	-	expression tag	UNP Q9SCZ4
A	514	SER	-	expression tag	UNP Q9SCZ4
A	515	GLN	-	expression tag	UNP Q9SCZ4
A	516	GLY	-	expression tag	UNP Q9SCZ4
A	517	SER	-	expression tag	UNP Q9SCZ4
A	565	ARG	LYS	conflict	UNP Q9SCZ4
B	504	MET	-	initiating methionine	UNP Q9SCZ4
B	505	GLY	-	expression tag	UNP Q9SCZ4
B	506	SER	-	expression tag	UNP Q9SCZ4
B	507	SER	-	expression tag	UNP Q9SCZ4
B	508	HIS	-	expression tag	UNP Q9SCZ4
B	509	HIS	-	expression tag	UNP Q9SCZ4
B	510	HIS	-	expression tag	UNP Q9SCZ4
B	511	HIS	-	expression tag	UNP Q9SCZ4
B	512	HIS	-	expression tag	UNP Q9SCZ4
B	513	HIS	-	expression tag	UNP Q9SCZ4

*Continued on next page...*

Continued from previous page...

Chain	Residue	Modelled	Actual	Comment	Reference
B	514	SER	-	expression tag	UNP Q9SCZ4
B	515	GLN	-	expression tag	UNP Q9SCZ4
B	516	GLY	-	expression tag	UNP Q9SCZ4
B	517	SER	-	expression tag	UNP Q9SCZ4
B	565	ARG	LYS	conflict	UNP Q9SCZ4

- Molecule 2 is ADENOSINE-5'-DIPHOSPHATE (three-letter code: ADP) (formula:  $C_{10}H_{15}N_5O_{10}P_2$ ) (labeled as "Ligand of Interest" by depositor).



Mol	Chain	Residues	Atoms					ZeroOcc	AltConf
			Total	C	N	O	P		
2	A	1	27	10	5	10	2	0	0
2	B	1	27	10	5	10	2	0	0

- Molecule 3 is MAGNESIUM ION (three-letter code: MG) (formula: Mg) (labeled as "Ligand of Interest" by depositor).

Mol	Chain	Residues	Atoms		ZeroOcc	AltConf
3	A	1	Total	Mg	0	0
			1	1		

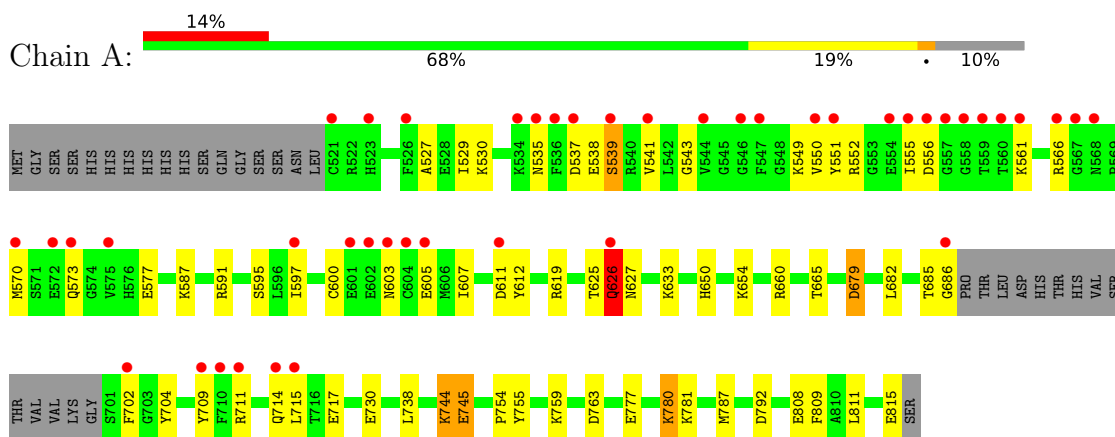
- Molecule 4 is water.

<b>Mol</b>	<b>Chain</b>	<b>Residues</b>	<b>Atoms</b>		<b>ZeroOcc</b>	<b>AltConf</b>
4	A	75	Total 75	O 75	0	0
4	B	88	Total 88	O 88	0	0

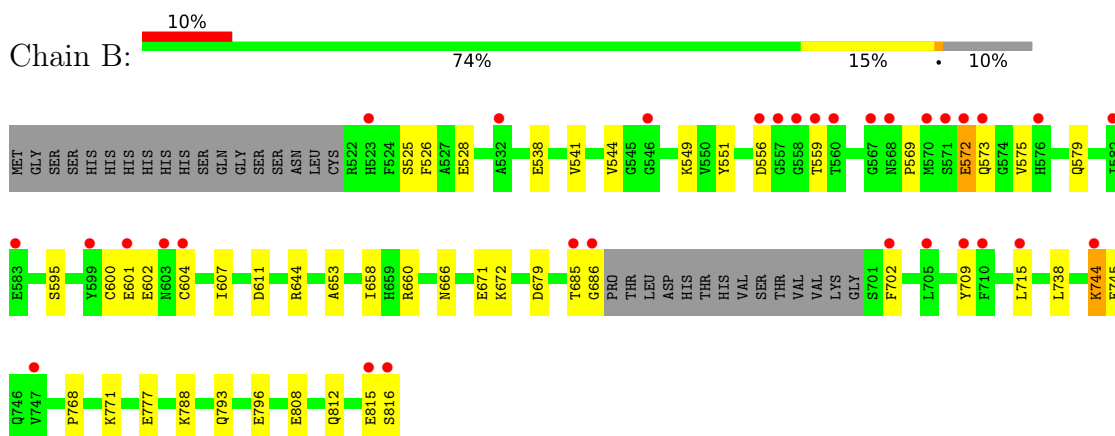
### 3 Residue-property plots [i](#)

These plots are drawn for all protein, RNA, DNA and oligosaccharide chains in the entry. The first graphic for a chain summarises the proportions of the various outlier classes displayed in the second graphic. The second graphic shows the sequence view annotated by issues in geometry and electron density. Residues are color-coded according to the number of geometric quality criteria for which they contain at least one outlier: green = 0, yellow = 1, orange = 2 and red = 3 or more. A red dot above a residue indicates a poor fit to the electron density ( $RSRZ > 2$ ). Stretches of 2 or more consecutive residues without any outlier are shown as a green connector. Residues present in the sample, but not in the model, are shown in grey.

- Molecule 1: Receptor-like protein kinase FERONIA



- Molecule 1: Receptor-like protein kinase FERONIA



## 4 Data and refinement statistics

Property	Value	Source
Space group	P 1 21 1	Depositor
Cell constants a, b, c, $\alpha$ , $\beta$ , $\gamma$	61.80Å 83.16Å 62.05Å 90.00° 93.14° 90.00°	Depositor
Resolution (Å)	61.71 – 1.93 61.71 – 1.93	Depositor EDS
% Data completeness (in resolution range)	90.1 (61.71-1.93) 90.1 (61.71-1.93)	Depositor EDS
$R_{merge}$	0.06	Depositor
$R_{sym}$	(Not available)	Depositor
$\langle I/\sigma(I) \rangle$ <sup>1</sup>	1.93 (at 1.92Å)	Xtrriage
Refinement program	PHENIX 1.15_3459	Depositor
R, $R_{free}$	0.187 , 0.207 0.186 , 0.206	Depositor DCC
$R_{free}$ test set	2107 reflections (4.92%)	wwPDB-VP
Wilson B-factor (Å <sup>2</sup> )	31.0	Xtrriage
Anisotropy	0.558	Xtrriage
Bulk solvent $k_{sol}$ (e/Å <sup>3</sup> ), $B_{sol}$ (Å <sup>2</sup> )	0.38 , 56.2	EDS
L-test for twinning <sup>2</sup>	$\langle  L  \rangle = 0.49$ , $\langle L^2 \rangle = 0.32$	Xtrriage
Estimated twinning fraction	0.025 for l,-k,h	Xtrriage
$F_o, F_c$ correlation	0.96	EDS
Total number of atoms	4724	wwPDB-VP
Average B, all atoms (Å <sup>2</sup> )	48.0	wwPDB-VP

Xtrriage's analysis on translational NCS is as follows: *The largest off-origin peak in the Patterson function is 8.33% of the height of the origin peak. No significant pseudotranslation is detected.*

<sup>1</sup>Intensities estimated from amplitudes.

<sup>2</sup>Theoretical values of  $\langle |L| \rangle$ ,  $\langle L^2 \rangle$  for acentric reflections are 0.5, 0.333 respectively for untwinned datasets, and 0.375, 0.2 for perfectly twinned datasets.

## 5 Model quality [i](#)

### 5.1 Standard geometry [i](#)

Bond lengths and bond angles in the following residue types are not validated in this section: ADP, MG

The Z score for a bond length (or angle) is the number of standard deviations the observed value is removed from the expected value. A bond length (or angle) with  $|Z| > 5$  is considered an outlier worth inspection. RMSZ is the root-mean-square of all Z scores of the bond lengths (or angles).

Mol	Chain	Bond lengths		Bond angles	
		RMSZ	# Z  >5	RMSZ	# Z  >5
1	A	0.52	2/2304 (0.1%)	0.76	6/3104 (0.2%)
1	B	0.49	1/2304 (0.0%)	0.68	4/3104 (0.1%)
All	All	0.51	3/4608 (0.1%)	0.72	10/6208 (0.2%)

All (3) bond length outliers are listed below:

Mol	Chain	Res	Type	Atoms	Z	Observed(Å)	Ideal(Å)
1	B	572	GLU	CD-OE2	-6.39	1.18	1.25
1	A	745	GLU	CD-OE1	-5.96	1.19	1.25
1	A	654	LYS	CD-CE	5.71	1.65	1.51

All (10) bond angle outliers are listed below:

Mol	Chain	Res	Type	Atoms	Z	Observed(°)	Ideal(°)
1	A	715	LEU	CB-CG-CD1	-8.56	96.45	111.00
1	B	744	LYS	CA-CB-CG	-8.40	94.92	113.40
1	B	744	LYS	CB-CG-CD	7.65	131.50	111.60
1	A	654	LYS	CD-CE-NZ	6.77	127.28	111.70
1	A	715	LEU	CB-CG-CD2	6.50	122.05	111.00
1	B	744	LYS	CG-CD-CE	-6.23	93.20	111.90
1	B	572	GLU	OE1-CD-OE2	5.95	130.44	123.30
1	A	626	GLN	CA-CB-CG	-5.52	101.26	113.40
1	A	715	LEU	CA-CB-CG	5.46	127.86	115.30
1	A	679	ASP	N-CA-C	5.36	125.46	111.00

There are no chirality outliers.

There are no planarity outliers.



## 5.2 Too-close contacts

In the following table, the Non-H and H(model) columns list the number of non-hydrogen atoms and hydrogen atoms in the chain respectively. The H(added) column lists the number of hydrogen atoms added and optimized by MolProbity. The Clashes column lists the number of clashes within the asymmetric unit, whereas Symm-Clashes lists symmetry-related clashes.

Mol	Chain	Non-H	H(model)	H(added)	Clashes	Symm-Clashes
1	A	2253	0	2240	45	7
1	B	2253	0	2240	34	7
2	A	27	0	12	1	0
2	B	27	0	12	1	0
3	A	1	0	0	0	0
4	A	75	0	0	6	0
4	B	88	0	0	2	0
All	All	4724	0	4504	78	7

The all-atom clashscore is defined as the number of clashes found per 1000 atoms (including hydrogen atoms). The all-atom clashscore for this structure is 9.

All (78) close contacts within the same asymmetric unit are listed below, sorted by their clash magnitude.

Atom-1	Atom-2	Interatomic distance (Å)	Clash overlap (Å)
1:A:597:ILE:HD11	1:A:611:ASP:OD1	1.29	1.31
1:B:644:ARG:NH1	4:B:1001:HOH:O	2.05	0.88
1:B:660:ARG:HD2	1:B:715:LEU:HD23	1.57	0.86
1:A:744:LYS:O	1:A:744:LYS:HD3	1.77	0.84
1:A:679:ASP:OD2	4:A:1001:HOH:O	2.07	0.73
1:A:763:ASP:OD1	4:A:1002:HOH:O	2.09	0.70
1:B:601:GLU:O	4:B:1002:HOH:O	2.09	0.70
1:A:597:ILE:CD1	1:A:611:ASP:OD1	2.24	0.69
1:B:575:VAL:O	1:B:579:GLN:HG3	1.93	0.69
1:B:744:LYS:O	1:B:744:LYS:HG2	1.93	0.68
1:A:555:ILE:CD1	1:A:556:ASP:CG	2.63	0.68
1:A:745:GLU:H	1:A:745:GLU:CD	1.99	0.66
1:A:808:GLU:OE2	4:A:1003:HOH:O	2.15	0.65
1:B:569:PRO:HG2	1:B:604:CYS:O	1.95	0.65
1:A:555:ILE:HD13	1:A:556:ASP:OD1	1.97	0.64
1:A:625:THR:C	1:A:626:GLN:HG2	2.19	0.63
1:A:573:GLN:O	1:A:577:GLU:HB2	1.99	0.62
1:A:555:ILE:C	1:A:555:ILE:HD12	2.20	0.62
1:A:543:GLY:O	1:A:550:VAL:HG12	2.00	0.62
1:B:660:ARG:HD2	1:B:715:LEU:CD2	2.31	0.61

*Continued on next page...*

*Continued from previous page...*

Atom-1	Atom-2	Interatomic distance (Å)	Clash overlap (Å)
1:A:529:ILE:HG21	1:A:607:ILE:HD13	1.82	0.61
1:A:538:GLU:HA	1:A:541:VAL:HG23	1.84	0.60
1:B:595:SER:HB3	1:B:611:ASP:OD2	2.02	0.60
1:B:572:GLU:HG3	1:B:573:GLN:H	1.67	0.59
1:A:600:CYS:HB3	1:A:607:ILE:HB	1.85	0.59
1:B:644:ARG:NH1	1:B:808:GLU:OE1	2.29	0.58
1:A:754:PRO:HA	1:A:787:MET:SD	2.44	0.58
1:A:555:ILE:HD12	1:A:556:ASP:CG	2.24	0.58
1:A:660:ARG:HD3	1:A:682:LEU:O	2.04	0.57
1:B:538:GLU:HA	1:B:541:VAL:HG23	1.87	0.57
1:B:600:CYS:HB3	1:B:607:ILE:HB	1.87	0.57
1:B:572:GLU:HG3	1:B:573:GLN:N	2.22	0.54
1:B:768:PRO:HA	1:B:771:LYS:HD2	1.90	0.54
1:A:702:PHE:HB3	1:A:738:LEU:HD22	1.89	0.53
1:A:685:THR:OG1	1:A:686:GLY:N	2.41	0.53
1:B:702:PHE:HB3	1:B:738:LEU:HD22	1.89	0.53
1:A:587:LYS:HG2	1:A:587:LYS:O	2.09	0.52
1:B:549:LYS:HE2	1:B:551:TYR:OH	2.09	0.52
1:A:597:ILE:HD11	1:A:611:ASP:CG	2.21	0.52
1:A:815:GLU:C	4:A:1006:HOH:O	2.48	0.52
1:B:556:ASP:O	1:B:559:THR:HG22	2.09	0.51
1:A:777:GLU:O	1:A:780:LYS:HG3	2.11	0.51
1:B:679:ASP:OD2	2:B:901:ADP:O2A	2.28	0.51
1:B:526:PHE:HB2	1:B:602:GLU:HG3	1.94	0.50
1:B:672:LYS:HD2	1:B:672:LYS:N	2.27	0.49
1:A:550:VAL:HG11	2:A:901:ADP:O4'	2.13	0.49
1:A:561:LYS:HE2	1:A:612:TYR:CD2	2.48	0.48
1:A:755:TYR:OH	1:A:759:LYS:HE3	2.13	0.48
1:B:709:TYR:CD1	1:B:715:LEU:HD13	2.49	0.48
1:B:793:GLN:HB2	1:B:796:GLU:HG2	1.95	0.48
1:A:591:ARG:NE	1:B:653:ALA:O	2.41	0.48
1:B:777:GLU:H	1:B:777:GLU:CD	2.19	0.47
1:A:633:LYS:HG3	1:A:811:LEU:HD11	1.97	0.46
1:A:543:GLY:O	1:A:550:VAL:CG1	2.64	0.46
1:A:619:ARG:CZ	1:A:665:THR:HG23	2.46	0.46
1:A:627:ASN:ND2	4:A:1005:HOH:O	2.23	0.46
1:B:745:GLU:CD	1:B:745:GLU:H	2.18	0.45
1:A:625:THR:O	1:A:626:GLN:HG2	2.15	0.45
1:A:704:TYR:OH	1:A:730:GLU:OE2	2.28	0.45
1:B:544:VAL:HG22	1:B:549:LYS:HG3	1.98	0.45
1:A:555:ILE:CD1	1:A:556:ASP:OD1	2.62	0.44

*Continued on next page...*

Continued from previous page...

Atom-1	Atom-2	Interatomic distance (Å)	Clash overlap (Å)
1:B:709:TYR:CG	1:B:715:LEU:HD13	2.53	0.43
1:B:788:LYS:HE2	1:B:788:LYS:HB3	1.78	0.43
1:B:658:ILE:HG22	1:B:660:ARG:HG2	1.99	0.43
1:B:525:SER:OG	1:B:528:GLU:N	2.45	0.43
1:B:685:THR:OG1	1:B:686:GLY:N	2.52	0.43
1:B:671:GLU:C	1:B:672:LYS:HD2	2.40	0.43
1:A:549:LYS:HD2	1:A:551:TYR:OH	2.19	0.42
1:A:754:PRO:HB3	1:A:787:MET:SD	2.59	0.42
1:A:537:ASP:CG	1:A:539:SER:HB3	2.39	0.42
1:A:527:ALA:HA	1:A:530:LYS:HG2	2.01	0.42
1:A:555:ILE:HD12	1:A:556:ASP:N	2.35	0.41
1:B:812:GLN:HA	1:B:815:GLU:HG2	2.01	0.41
1:A:650:HIS:CE1	1:A:717:GLU:HB2	2.56	0.41
1:A:781:LYS:HE3	1:A:809:PHE:CD2	2.56	0.41
1:B:666:ASN:OD1	1:B:679:ASP:OD2	2.39	0.41
1:A:603:ASN:HB2	1:A:605:GLU:HG3	2.02	0.41
1:A:685:THR:C	4:A:1011:HOH:O	2.59	0.40

All (7) symmetry-related close contacts are listed below. The label for Atom-2 includes the symmetry operator and encoded unit-cell translations to be applied.

Atom-1	Atom-2	Interatomic distance (Å)	Clash overlap (Å)
1:A:711:ARG:NH2	1:B:744:LYS:NZ[1_655]	1.29	0.91
1:A:711:ARG:NH2	1:B:744:LYS:CE[1_655]	1.65	0.55
1:A:711:ARG:CZ	1:B:744:LYS:NZ[1_655]	1.78	0.42
1:A:711:ARG:CD	1:B:744:LYS:NZ[1_655]	1.89	0.31
1:A:573:GLN:NE2	1:B:572:GLU:OE1[1_655]	1.93	0.27
1:A:711:ARG:NH2	1:B:744:LYS:CD[1_655]	1.93	0.27
1:A:711:ARG:NE	1:B:744:LYS:NZ[1_655]	1.96	0.24

## 5.3 Torsion angles [i](#)

### 5.3.1 Protein backbone [i](#)

In the following table, the Percentiles column shows the percent Ramachandran outliers of the chain as a percentile score with respect to all X-ray entries followed by that with respect to entries of similar resolution.

The Analysed column shows the number of residues for which the backbone conformation was analysed, and the total number of residues.

Mol	Chain	Analysed	Favoured	Allowed	Outliers	Percentiles	
1	A	277/313 (88%)	273 (99%)	4 (1%)	0	100	100
1	B	277/313 (88%)	274 (99%)	3 (1%)	0	100	100
All	All	554/626 (88%)	547 (99%)	7 (1%)	0	100	100

There are no Ramachandran outliers to report.

### 5.3.2 Protein sidechains [i](#)

In the following table, the Percentiles column shows the percent sidechain outliers of the chain as a percentile score with respect to all X-ray entries followed by that with respect to entries of similar resolution.

The Analysed column shows the number of residues for which the sidechain conformation was analysed, and the total number of residues.

Mol	Chain	Analysed	Rotameric	Outliers	Percentiles	
1	A	241/270 (89%)	229 (95%)	12 (5%)	24	13
1	B	241/270 (89%)	240 (100%)	1 (0%)	91	91
All	All	482/540 (89%)	469 (97%)	13 (3%)	44	36

All (13) residues with a non-rotameric sidechain are listed below:

Mol	Chain	Res	Type
1	A	535	ASN
1	A	539	SER
1	A	552	ARG
1	A	566	ARG
1	A	570	MET
1	A	595	SER
1	A	626	GLN
1	A	709	TYR
1	A	714	GLN
1	A	744	LYS
1	A	780	LYS
1	A	792	ASP
1	B	816	SER

Sometimes sidechains can be flipped to improve hydrogen bonding and reduce clashes. All (2) such sidechains are listed below:

Mol	Chain	Res	Type
1	A	535	ASN
1	B	535	ASN

### 5.3.3 RNA [i](#)

There are no RNA molecules in this entry.

## 5.4 Non-standard residues in protein, DNA, RNA chains [i](#)

There are no non-standard protein/DNA/RNA residues in this entry.

## 5.5 Carbohydrates [i](#)

There are no monosaccharides in this entry.

## 5.6 Ligand geometry [i](#)

Of 3 ligands modelled in this entry, 1 is monoatomic - leaving 2 for Mogul analysis.

In the following table, the Counts columns list the number of bonds (or angles) for which Mogul statistics could be retrieved, the number of bonds (or angles) that are observed in the model and the number of bonds (or angles) that are defined in the Chemical Component Dictionary. The Link column lists molecule types, if any, to which the group is linked. The Z score for a bond length (or angle) is the number of standard deviations the observed value is removed from the expected value. A bond length (or angle) with  $|Z| > 2$  is considered an outlier worth inspection. RMSZ is the root-mean-square of all Z scores of the bond lengths (or angles).

Mol	Type	Chain	Res	Link	Bond lengths			Bond angles		
					Counts	RMSZ	# Z  > 2	Counts	RMSZ	# Z  > 2
2	ADP	A	901	3	24,29,29	1.00	1 (4%)	29,45,45	1.39	5 (17%)
2	ADP	B	901	-	24,29,29	1.02	1 (4%)	29,45,45	1.22	4 (13%)

In the following table, the Chirals column lists the number of chiral outliers, the number of chiral centers analysed, the number of these observed in the model and the number defined in the Chemical Component Dictionary. Similar counts are reported in the Torsion and Rings columns. '-' means no outliers of that kind were identified.

Mol	Type	Chain	Res	Link	Chirals	Torsions	Rings
2	ADP	A	901	3	-	2/12/32/32	0/3/3/3
2	ADP	B	901	-	-	2/12/32/32	0/3/3/3

All (2) bond length outliers are listed below:

Mol	Chain	Res	Type	Atoms	Z	Observed(Å)	Ideal(Å)
2	B	901	ADP	C5-C4	2.57	1.47	1.40
2	A	901	ADP	C5-C4	2.49	1.47	1.40

All (9) bond angle outliers are listed below:

Mol	Chain	Res	Type	Atoms	Z	Observed(°)	Ideal(°)
2	A	901	ADP	PA-O3A-PB	-3.51	120.79	132.83
2	B	901	ADP	N3-C2-N1	-3.14	123.76	128.68
2	A	901	ADP	N3-C2-N1	-2.97	124.03	128.68
2	B	901	ADP	PA-O3A-PB	-2.73	123.47	132.83
2	A	901	ADP	C3'-C2'-C1'	2.47	104.70	100.98
2	A	901	ADP	C4-C5-N7	-2.44	106.85	109.40
2	A	901	ADP	O3B-PB-O2B	2.20	116.04	107.64
2	B	901	ADP	C4-C5-N7	-2.12	107.19	109.40
2	B	901	ADP	C3'-C2'-C1'	2.01	104.00	100.98

There are no chirality outliers.

All (4) torsion outliers are listed below:

Mol	Chain	Res	Type	Atoms
2	B	901	ADP	C3'-C4'-C5'-O5'
2	A	901	ADP	O4'-C4'-C5'-O5'
2	B	901	ADP	O4'-C4'-C5'-O5'
2	A	901	ADP	C3'-C4'-C5'-O5'

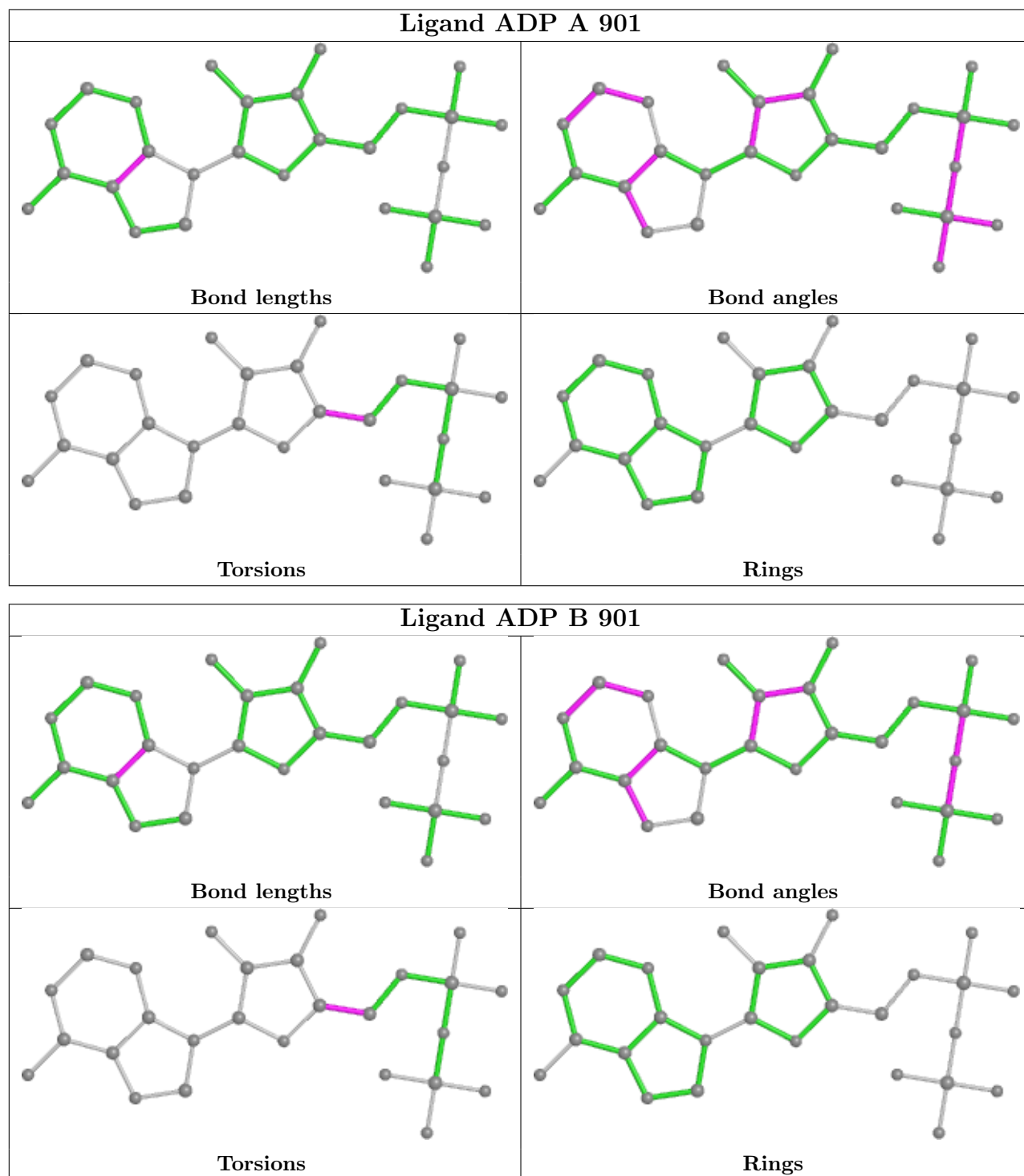
There are no ring outliers.

2 monomers are involved in 2 short contacts:

Mol	Chain	Res	Type	Clashes	Symm-Clashes
2	A	901	ADP	1	0
2	B	901	ADP	1	0

The following is a two-dimensional graphical depiction of Mogul quality analysis of bond lengths, bond angles, torsion angles, and ring geometry for all instances of the Ligand of Interest. In addition, ligands with molecular weight > 250 and outliers as shown on the validation Tables will also be included. For torsion angles, if less than 5% of the Mogul distribution of torsion angles is within 10 degrees of the torsion angle in question, then that torsion angle is considered an outlier. Any bond that is central to one or more torsion angles identified as an outlier by Mogul will be highlighted in the graph. For rings, the root-mean-square deviation (RMSD) between the ring in question and similar rings identified by Mogul is calculated over all ring torsion angles. If the

average RMSD is greater than 60 degrees and the minimal RMSD between the ring in question and any Mogul-identified rings is also greater than 60 degrees, then that ring is considered an outlier. The outliers are highlighted in purple. The color gray indicates Mogul did not find sufficient equivalents in the CSD to analyse the geometry.



## 5.7 Other polymers [i](#)

There are no such residues in this entry.

## 5.8 Polymer linkage issues [i](#)

There are no chain breaks in this entry.



## 6 Fit of model and data

### 6.1 Protein, DNA and RNA chains

In the following table, the column labelled ‘#RSRZ> 2’ contains the number (and percentage) of RSRZ outliers, followed by percent RSRZ outliers for the chain as percentile scores relative to all X-ray entries and entries of similar resolution. The OWAB column contains the minimum, median, 95<sup>th</sup> percentile and maximum values of the occupancy-weighted average B-factor per residue. The column labelled ‘Q< 0.9’ lists the number of (and percentage) of residues with an average occupancy less than 0.9.

Mol	Chain	Analysed	<RSRZ>	#RSRZ>2	OWAB(Å <sup>2</sup> )	Q<0.9
1	A	281/313 (89%)	0.90	44 (15%) <b>2</b>   <b>2</b>	21, 42, 89, 155	0
1	B	281/313 (89%)	0.78	32 (11%) <b>5</b>   <b>6</b>	21, 41, 84, 129	0
All	All	562/626 (89%)	0.84	76 (13%) <b>3</b>   <b>3</b>	21, 42, 89, 155	0

All (76) RSRZ outliers are listed below:

Mol	Chain	Res	Type	RSRZ
1	A	604	CYS	16.0
1	B	604	CYS	9.3
1	B	559	THR	8.1
1	A	686	GLY	7.8
1	A	558	GLY	5.7
1	B	686	GLY	5.3
1	A	715	LEU	4.8
1	B	568	ASN	4.7
1	B	556	ASP	4.7
1	B	572	GLU	4.6
1	B	603	ASN	4.6
1	A	573	GLN	4.6
1	A	557	GLY	4.5
1	B	546	GLY	4.3
1	B	702	PHE	4.2
1	B	816	SER	4.2
1	A	568	ASN	3.9
1	A	570	MET	3.8
1	A	626	GLN	3.8
1	A	521	CYS	3.8
1	A	710	PHE	3.8
1	A	526	PHE	3.7
1	A	611	ASP	3.7
1	A	544	VAL	3.7

*Continued on next page...*

*Continued from previous page...*

<b>Mol</b>	<b>Chain</b>	<b>Res</b>	<b>Type</b>	<b>RSRZ</b>
1	A	536	PHE	3.7
1	B	715	LEU	3.7
1	B	685	THR	3.6
1	A	537	ASP	3.4
1	B	744	LYS	3.3
1	B	599	TYR	3.3
1	A	572	GLU	3.2
1	A	523	HIS	3.2
1	B	523	HIS	3.1
1	B	576	HIS	3.1
1	A	547	PHE	3.1
1	B	570	MET	3.0
1	A	711	ARG	3.0
1	B	557	GLY	3.0
1	B	567	GLY	2.9
1	A	539	SER	2.9
1	A	605	GLU	2.9
1	A	534	LYS	2.9
1	A	601	GLU	2.8
1	B	560	THR	2.8
1	B	582	ILE	2.8
1	A	546	GLY	2.8
1	B	571	SER	2.8
1	A	566	ARG	2.7
1	A	535	ASN	2.7
1	B	709	TYR	2.6
1	A	567	GLY	2.6
1	B	573	GLN	2.6
1	A	702	PHE	2.5
1	A	603	ASN	2.5
1	B	583	GLU	2.5
1	A	575	VAL	2.5
1	A	551	TYR	2.5
1	A	559	THR	2.5
1	A	555	ILE	2.4
1	A	709	TYR	2.4
1	A	602	GLU	2.4
1	B	710	PHE	2.4
1	B	705	LEU	2.3
1	A	560	THR	2.3
1	B	558	GLY	2.3
1	B	815	GLU	2.3

*Continued on next page...*

*Continued from previous page...*

Mol	Chain	Res	Type	RSRZ
1	A	561	LYS	2.3
1	A	714	GLN	2.2
1	A	597	ILE	2.2
1	A	550	VAL	2.2
1	B	601	GLU	2.2
1	B	532	ALA	2.2
1	A	554	GLU	2.1
1	B	747	VAL	2.1
1	A	541	VAL	2.1
1	A	556	ASP	2.0

## 6.2 Non-standard residues in protein, DNA, RNA chains [i](#)

There are no non-standard protein/DNA/RNA residues in this entry.

## 6.3 Carbohydrates [i](#)

There are no monosaccharides in this entry.

## 6.4 Ligands [i](#)

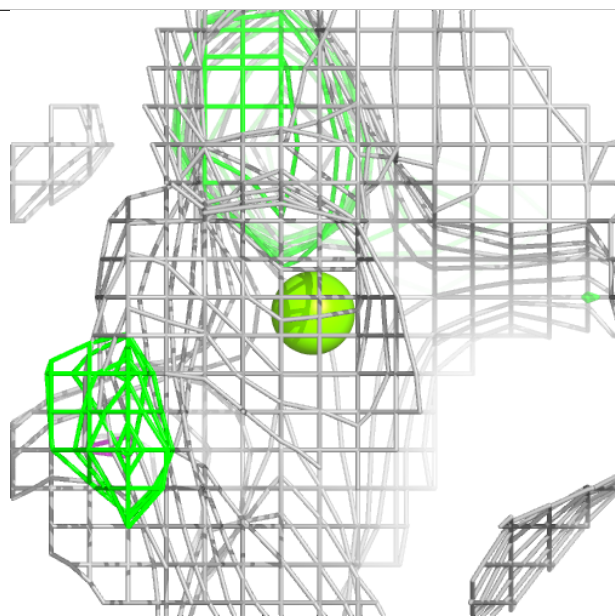
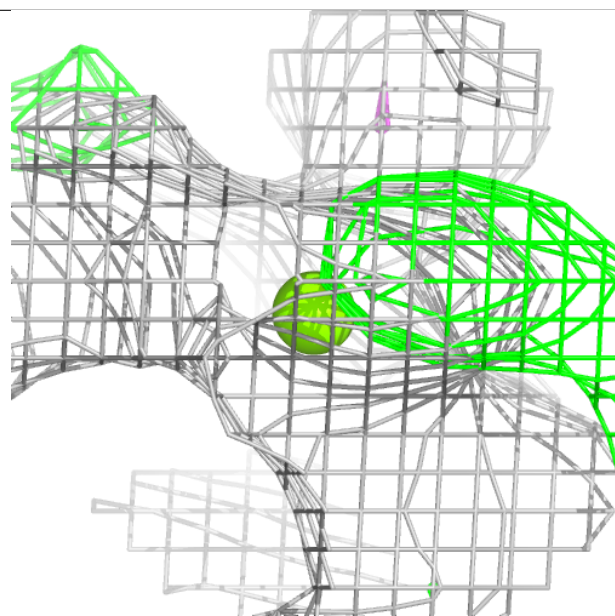
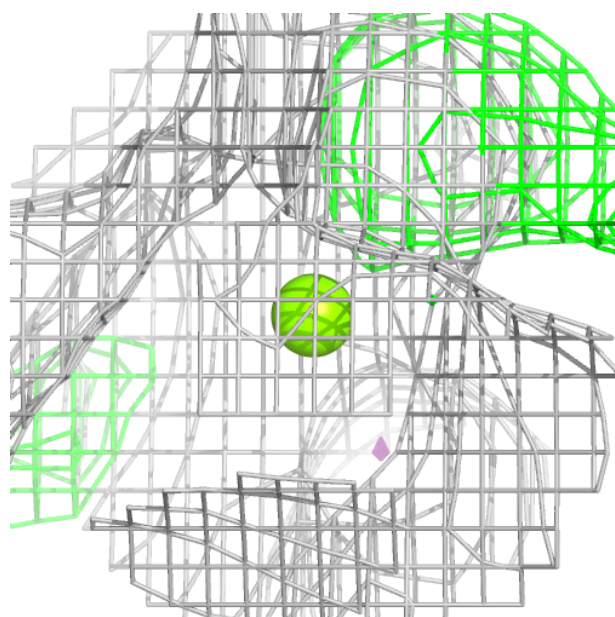
In the following table, the Atoms column lists the number of modelled atoms in the group and the number defined in the chemical component dictionary. The B-factors column lists the minimum, median, 95<sup>th</sup> percentile and maximum values of B factors of atoms in the group. The column labelled 'Q< 0.9' lists the number of atoms with occupancy less than 0.9.

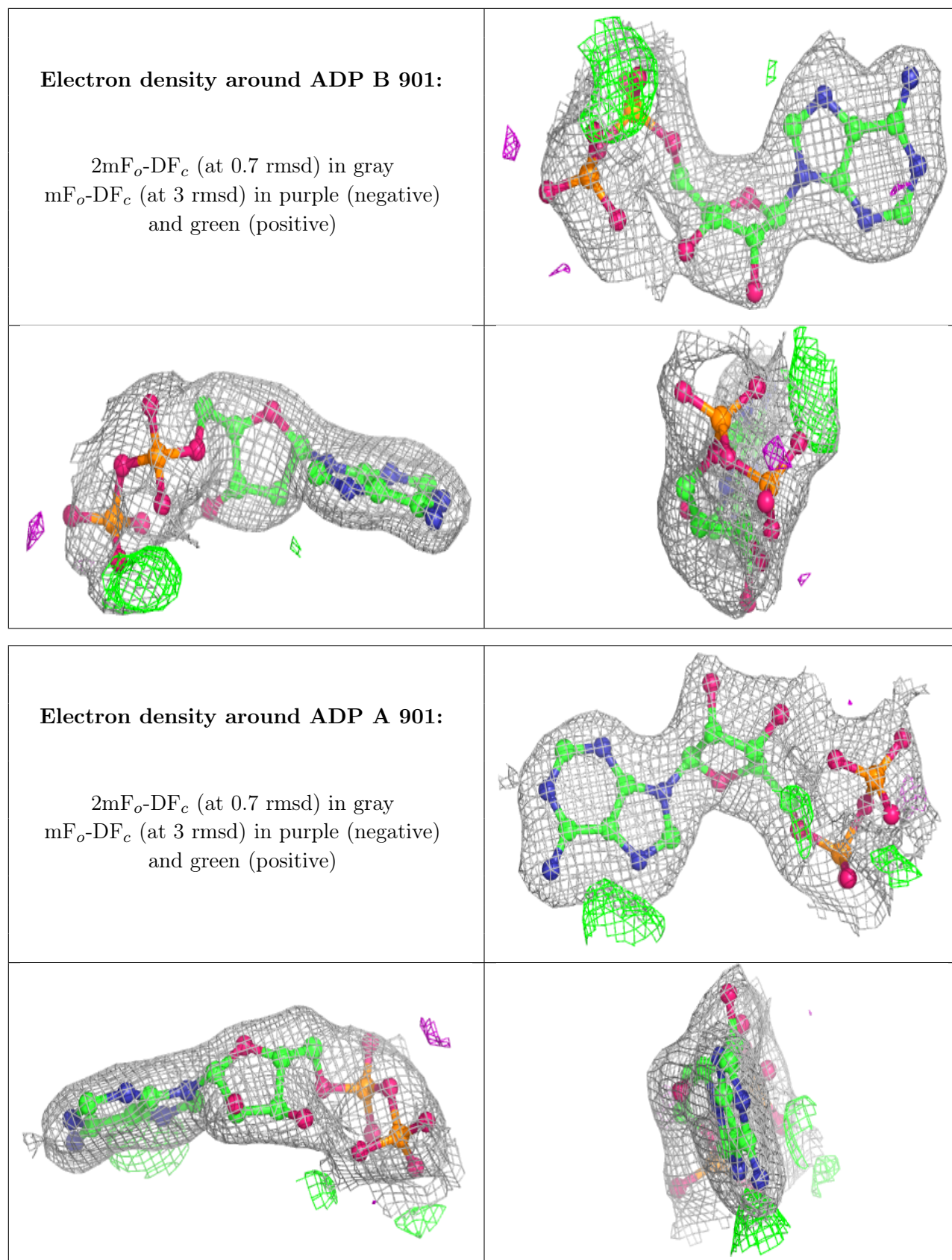
Mol	Type	Chain	Res	Atoms	RSCC	RSR	B-factors(Å <sup>2</sup> )	Q<0.9
3	MG	A	902	1/1	0.48	0.16	121,121,121,121	0
2	ADP	B	901	27/27	0.90	0.12	35,72,127,130	0
2	ADP	A	901	27/27	0.92	0.12	30,78,132,136	0

The following is a graphical depiction of the model fit to experimental electron density of all instances of the Ligand of Interest. In addition, ligands with molecular weight > 250 and outliers as shown on the geometry validation Tables will also be included. Each fit is shown from different orientation to approximate a three-dimensional view.

**Electron density around MG A 902:**

$2mF_o-DF_c$  (at 0.7 rmsd) in gray  
 $mF_o-DF_c$  (at 3 rmsd) in purple (negative)  
and green (positive)





## 6.5 Other polymers [i](#)

There are no such residues in this entry.