



# Full wwPDB X-ray Structure Validation Report ⓘ

Nov 13, 2023 – 02:21 PM JST

PDB ID : 5XEQ  
Title : Crystal Structure of human MDGA1 and human neuroligin-2 complex  
Authors : Kim, H.M.; Kim, J.A.; Kim, D.  
Deposited on : 2017-04-05  
Resolution : 3.14 Å(reported)

This is a Full wwPDB X-ray Structure Validation Report for a publicly released PDB entry.

We welcome your comments at [validation@mail.wwpdb.org](mailto:validation@mail.wwpdb.org)

A user guide is available at

<https://www.wwpdb.org/validation/2017/XrayValidationReportHelp>

with specific help available everywhere you see the ⓘ symbol.

The types of validation reports are described at

<http://www.wwpdb.org/validation/2017/FAQs#types>.

---

The following versions of software and data (see [references ⓘ](#)) were used in the production of this report:

MolProbity : 4.02b-467  
Mogul : 1.8.5 (274361), CSD as541be (2020)  
Xtriage (Phenix) : 1.13  
EDS : 2.36  
Percentile statistics : 20191225.v01 (using entries in the PDB archive December 25th 2019)  
Refmac : 5.8.0158  
CCP4 : 7.0.044 (Gargrove)  
Ideal geometry (proteins) : Engh & Huber (2001)  
Ideal geometry (DNA, RNA) : Parkinson et al. (1996)  
Validation Pipeline (wwPDB-VP) : 2.36

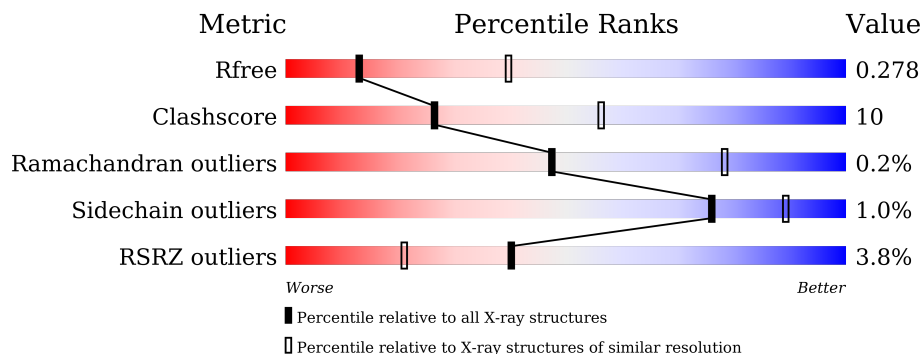
# 1 Overall quality at a glance

The following experimental techniques were used to determine the structure:

*X-RAY DIFFRACTION*

The reported resolution of this entry is 3.14 Å.

Percentile scores (ranging between 0-100) for global validation metrics of the entry are shown in the following graphic. The table shows the number of entries on which the scores are based.



Metric	Whole archive (#Entries)	Similar resolution (#Entries, resolution range(Å))
$R_{free}$	130704	1626 (3.18-3.10)
Clashscore	141614	1735 (3.18-3.10)
Ramachandran outliers	138981	1677 (3.18-3.10)
Sidechain outliers	138945	1677 (3.18-3.10)
RSRZ outliers	127900	1588 (3.18-3.10)

The table below summarises the geometric issues observed across the polymeric chains and their fit to the electron density. The red, orange, yellow and green segments of the lower bar indicate the fraction of residues that contain outliers for  $\geq 3$ , 2, 1 and 0 types of geometric quality criteria respectively. A grey segment represents the fraction of residues that are not modelled. The numeric value for each fraction is indicated below the corresponding segment, with a dot representing fractions  $\leq 5\%$ . The upper red bar (where present) indicates the fraction of residues that have poor fit to the electron density. The numeric value is given above the bar.

Mol	Chain	Length	Quality of chain
1	A	576	
2	B	319	
3	C	2	

## 2 Entry composition i

There are 4 unique types of molecules in this entry. The entry contains 6450 atoms, of which 0 are hydrogens and 0 are deuteriums.

In the tables below, the ZeroOcc column contains the number of atoms modelled with zero occupancy, the AltConf column contains the number of residues with at least one atom in alternate conformation and the Trace column contains the number of residues modelled with at most 2 atoms.

- Molecule 1 is a protein called Neuroligin-2.

Mol	Chain	Residues	Atoms					ZeroOcc	AltConf	Trace
			Total	C	N	O	S			
1	A	525	4126	2645	706	757	18	0	0	0

There are 7 discrepancies between the modelled and reference sequences:

Chain	Residue	Modelled	Actual	Comment	Reference
A	39	ALA	-	expression tag	UNP Q8NFZ4
A	40	ASP	-	expression tag	UNP Q8NFZ4
A	41	PRO	-	expression tag	UNP Q8NFZ4
A	98	GLN	ASN	engineered mutation	UNP Q8NFZ4
A	612	VAL	-	expression tag	UNP Q8NFZ4
A	613	PRO	-	expression tag	UNP Q8NFZ4
A	614	ARG	-	expression tag	UNP Q8NFZ4

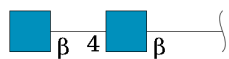
- Molecule 2 is a protein called MAM domain-containing glycosylphosphatidylinositol anchor protein 1.

Mol	Chain	Residues	Atoms					ZeroOcc	AltConf	Trace
			Total	C	N	O	S			
2	B	292	2254	1409	407	428	10	0	0	0

There are 7 discrepancies between the modelled and reference sequences:

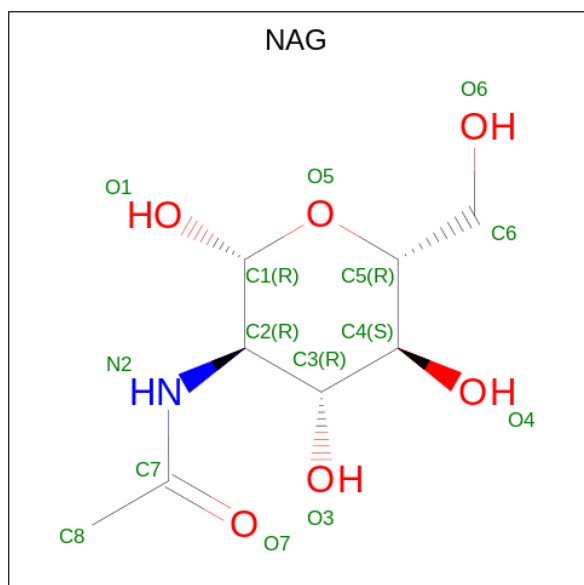
Chain	Residue	Modelled	Actual	Comment	Reference
B	16	ALA	-	expression tag	UNP Q8NFP4
B	17	ASP	-	expression tag	UNP Q8NFP4
B	18	PRO	-	expression tag	UNP Q8NFP4
B	331	LEU	-	expression tag	UNP Q8NFP4
B	332	VAL	-	expression tag	UNP Q8NFP4
B	333	PRO	-	expression tag	UNP Q8NFP4
B	334	ARG	-	expression tag	UNP Q8NFP4

- Molecule 3 is an oligosaccharide called 2-acetamido-2-deoxy-beta-D-glucopyranose-(1-4)-2-acetamido-2-deoxy-beta-D-glucopyranose.



Mol	Chain	Residues	Atoms				ZeroOcc	AltConf	Trace
			Total	C	N	O			
3	C	2	28	16	2	10	0	0	0

- Molecule 4 is 2-acetamido-2-deoxy-beta-D-glucopyranose (three-letter code: NAG) (formula:  $C_8H_{15}NO_6$ ).

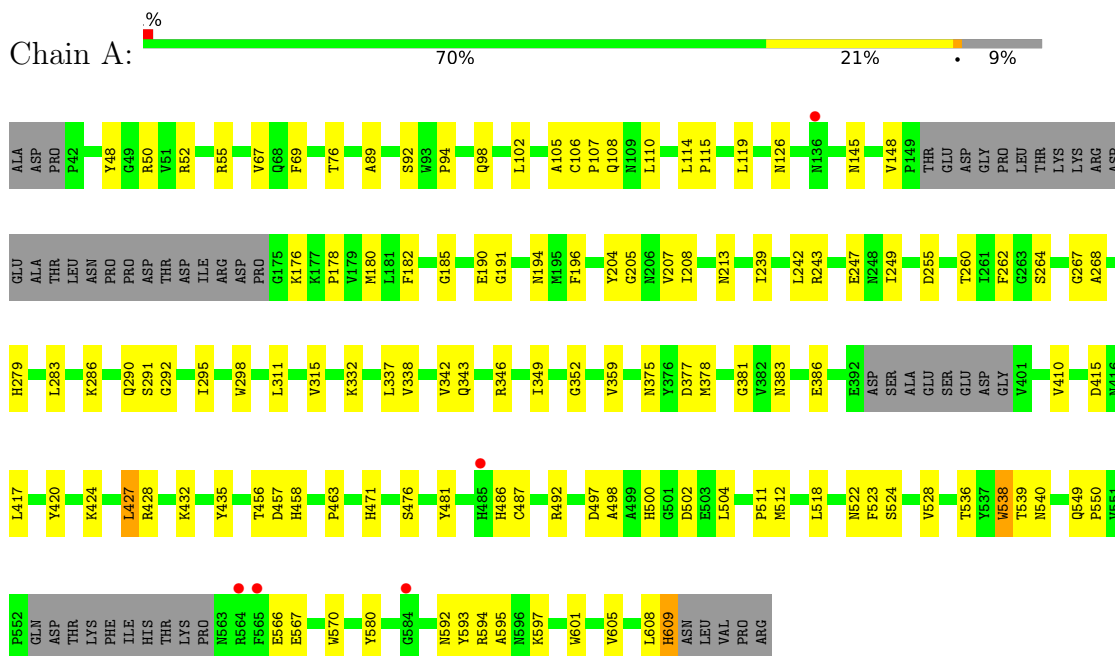


Mol	Chain	Residues	Atoms				ZeroOcc	AltConf
			Total	C	N	O		
4	A	1	14	8	1	5	0	0
4	B	1	14	8	1	5	0	0
4	B	1	14	8	1	5	0	0

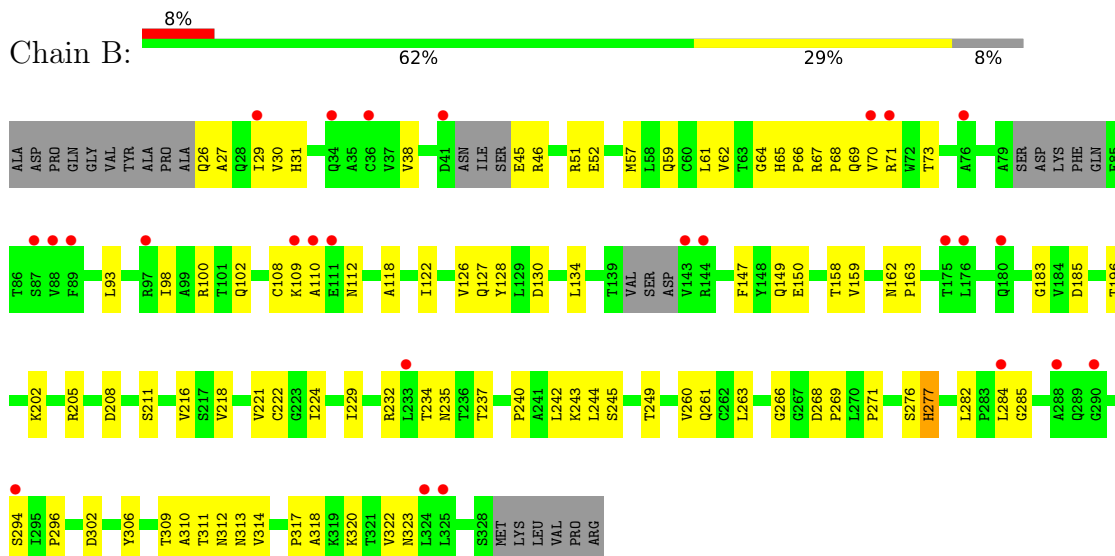
### 3 Residue-property plots [i](#)

These plots are drawn for all protein, RNA, DNA and oligosaccharide chains in the entry. The first graphic for a chain summarises the proportions of the various outlier classes displayed in the second graphic. The second graphic shows the sequence view annotated by issues in geometry and electron density. Residues are color-coded according to the number of geometric quality criteria for which they contain at least one outlier: green = 0, yellow = 1, orange = 2 and red = 3 or more. A red dot above a residue indicates a poor fit to the electron density ( $RSRZ > 2$ ). Stretches of 2 or more consecutive residues without any outlier are shown as a green connector. Residues present in the sample, but not in the model, are shown in grey.

- Molecule 1: Neuroligin-2



- Molecule 2: MAM domain-containing glycosylphosphatidylinositol anchor protein 1



- Molecule 3: 2-acetamido-2-deoxy-beta-D-glucopyranose-(1-4)-2-acetamido-2-deoxy-beta-D-glucopyranose

Chain C:

100%

MAG1  
MAG2

## 4 Data and refinement statistics

Property	Value	Source
Space group	C 1 2 1	Depositor
Cell constants a, b, c, $\alpha$ , $\beta$ , $\gamma$	154.88Å 69.13Å 108.84Å 90.00° 115.31° 90.00°	Depositor
Resolution (Å)	49.20 – 3.14 49.20 – 3.14	Depositor EDS
% Data completeness (in resolution range)	99.8 (49.20-3.14) 99.8 (49.20-3.14)	Depositor EDS
$R_{merge}$	0.07	Depositor
$R_{sym}$	(Not available)	Depositor
$\langle I/\sigma(I) \rangle$ <sup>1</sup>	6.80 (at 3.12Å)	Xtrriage
Refinement program	PHENIX 1.10.1_2155	Depositor
R, $R_{free}$	0.234 , 0.278 0.234 , 0.278	Depositor DCC
$R_{free}$ test set	1847 reflections (10.01%)	wwPDB-VP
Wilson B-factor (Å <sup>2</sup> )	78.4	Xtrriage
Anisotropy	0.408	Xtrriage
Bulk solvent $k_{sol}$ (e/Å <sup>3</sup> ), $B_{sol}$ (Å <sup>2</sup> )	0.30 , 43.5	EDS
L-test for twinning <sup>2</sup>	$\langle  L  \rangle = 0.49$ , $\langle L^2 \rangle = 0.32$	Xtrriage
Estimated twinning fraction	No twinning to report.	Xtrriage
$F_o, F_c$ correlation	0.91	EDS
Total number of atoms	6450	wwPDB-VP
Average B, all atoms (Å <sup>2</sup> )	75.0	wwPDB-VP

Xtrriage's analysis on translational NCS is as follows: *The largest off-origin peak in the Patterson function is 4.39% of the height of the origin peak. No significant pseudotranslation is detected.*

<sup>1</sup>Intensities estimated from amplitudes.

<sup>2</sup>Theoretical values of  $\langle |L| \rangle$ ,  $\langle L^2 \rangle$  for acentric reflections are 0.5, 0.333 respectively for untwinned datasets, and 0.375, 0.2 for perfectly twinned datasets.

## 5 Model quality [i](#)

### 5.1 Standard geometry [i](#)

Bond lengths and bond angles in the following residue types are not validated in this section: NAG

The Z score for a bond length (or angle) is the number of standard deviations the observed value is removed from the expected value. A bond length (or angle) with  $|Z| > 5$  is considered an outlier worth inspection. RMSZ is the root-mean-square of all Z scores of the bond lengths (or angles).

Mol	Chain	Bond lengths		Bond angles	
		RMSZ	# Z  >5	RMSZ	# Z  >5
1	A	0.29	1/4241 (0.0%)	0.43	0/5777
2	B	0.26	0/2296	0.47	0/3125
All	All	0.28	1/6537 (0.0%)	0.45	0/8902

All (1) bond length outliers are listed below:

Mol	Chain	Res	Type	Atoms	Z	Observed(Å)	Ideal(Å)
1	A	522	ASN	CB-CG	6.12	1.65	1.51

There are no bond angle outliers.

There are no chirality outliers.

There are no planarity outliers.

### 5.2 Too-close contacts [i](#)

In the following table, the Non-H and H(model) columns list the number of non-hydrogen atoms and hydrogen atoms in the chain respectively. The H(added) column lists the number of hydrogen atoms added and optimized by MolProbity. The Clashes column lists the number of clashes within the asymmetric unit, whereas Symm-Clashes lists symmetry-related clashes.

Mol	Chain	Non-H	H(model)	H(added)	Clashes	Symm-Clashes
1	A	4126	0	3989	76	0
2	B	2254	0	2249	60	0
3	C	28	0	25	0	0
4	A	14	0	13	1	0
4	B	28	0	26	0	0
All	All	6450	0	6302	131	0

The all-atom clashscore is defined as the number of clashes found per 1000 atoms (including



hydrogen atoms). The all-atom clashscore for this structure is 10.

All (131) close contacts within the same asymmetric unit are listed below, sorted by their clash magnitude.

Atom-1	Atom-2	Interatomic distance (Å)	Clash overlap (Å)
2:B:38:VAL:HG11	2:B:222:CYS:HA	1.61	0.80
1:A:378:MET:SD	1:A:471:HIS:ND1	2.55	0.80
2:B:311:THR:HG22	2:B:317:PRO:HB3	1.67	0.77
2:B:71:ARG:O	2:B:108:CYS:HA	1.92	0.70
1:A:608:LEU:O	1:A:609:HIS:ND1	2.24	0.70
1:A:427:LEU:HD21	1:A:605:VAL:HG13	1.74	0.68
2:B:66:PRO:HD2	2:B:112:ASN:HD21	1.58	0.68
1:A:383:ASN:HB2	1:A:386:GLU:HG3	1.78	0.66
1:A:492:ARG:NH1	1:A:502:ASP:OD2	2.28	0.66
2:B:51:ARG:HH21	2:B:224:ILE:HA	1.61	0.65
2:B:260:VAL:HG11	2:B:322:VAL:HG21	1.78	0.65
2:B:100:ARG:HG2	2:B:128:TYR:CE1	2.35	0.62
2:B:240:PRO:HA	2:B:266:GLY:O	2.00	0.61
1:A:55:ARG:HG2	1:A:67:VAL:HG22	1.82	0.61
1:A:119:LEU:HD21	1:A:190:GLU:OE2	2.02	0.60
2:B:98:ILE:HG23	2:B:102:GLN:HB2	1.84	0.59
2:B:126:VAL:O	2:B:162:ASN:ND2	2.35	0.59
2:B:309:THR:HA	2:B:318:ALA:O	2.02	0.59
2:B:284:LEU:HB3	2:B:296:PRO:HD2	1.85	0.59
1:A:386:GLU:O	1:A:456:THR:OG1	2.18	0.58
2:B:205:ARG:NH2	2:B:208:ASP:OD1	2.30	0.58
1:A:566:GLU:HG2	1:A:567:GLU:HG2	1.85	0.57
1:A:343:GLN:HB2	2:B:149:GLN:HB3	1.86	0.57
1:A:205:GLY:HA3	1:A:539:THR:HG21	1.88	0.56
1:A:108:GLN:NE2	1:A:191:GLY:O	2.38	0.56
1:A:290:GLN:OE1	1:A:538:TRP:NE1	2.36	0.56
2:B:243:LYS:HB3	2:B:263:LEU:HB2	1.87	0.56
2:B:162:ASN:HB3	2:B:163:PRO:HD3	1.87	0.56
1:A:126:ASN:ND2	1:A:518:LEU:O	2.38	0.55
1:A:512:MET:HG2	1:A:528:VAL:HG13	1.89	0.55
2:B:68:PRO:HB3	2:B:112:ASN:HB2	1.89	0.55
2:B:109:LYS:HA	2:B:118:ALA:O	2.06	0.55
2:B:128:TYR:CE1	2:B:162:ASN:HB2	2.41	0.55
2:B:159:VAL:HG11	2:B:216:VAL:HG11	1.89	0.54
1:A:540:ASN:HB3	1:A:550:PRO:HD2	1.89	0.54
2:B:26:GLN:O	2:B:64:GLY:HA2	2.09	0.53
1:A:386:GLU:HG2	1:A:500:HIS:HA	1.89	0.53
2:B:100:ARG:NH2	2:B:130:ASP:OD1	2.42	0.52

*Continued on next page...*

*Continued from previous page...*

Atom-1	Atom-2	Interatomic distance (Å)	Clash overlap (Å)
2:B:282:LEU:HD11	2:B:306:TYR:OH	2.09	0.52
1:A:524:SER:HB3	4:A:701:NAG:O7	2.10	0.52
2:B:312:ASN:O	2:B:314:VAL:N	2.43	0.52
2:B:62:VAL:HG11	2:B:70:VAL:HG22	1.92	0.52
2:B:302:ASP:O	2:B:306:TYR:OH	2.20	0.52
1:A:268:ALA:HB3	1:A:292:GLY:HA3	1.91	0.51
1:A:592:ASN:HB3	1:A:595:ALA:HB2	1.92	0.51
1:A:332:LYS:HB2	1:A:337:LEU:HD11	1.93	0.51
1:A:417:LEU:HD13	1:A:458:HIS:CE1	2.45	0.51
1:A:349:ILE:HD12	1:A:352:GLY:HA3	1.94	0.50
1:A:458:HIS:HD2	1:A:601:TRP:CE3	2.29	0.50
1:A:286:LYS:HG3	1:A:377:ASP:HB2	1.94	0.50
2:B:127:GLN:HA	2:B:162:ASN:HB3	1.93	0.49
1:A:106:CYS:O	1:A:108:GLN:HG3	2.11	0.49
2:B:29:ILE:HA	2:B:61:LEU:O	2.12	0.49
1:A:178:PRO:HG2	1:A:207:VAL:HG13	1.94	0.49
1:A:346:ARG:HG3	2:B:150:GLU:HG3	1.93	0.49
2:B:285:GLY:HA2	2:B:294:SER:O	2.13	0.48
1:A:204:TYR:OH	1:A:536:THR:OG1	2.29	0.48
1:A:239:ILE:HD13	1:A:279:HIS:HB2	1.94	0.48
1:A:486:HIS:HB3	1:A:498:ALA:HA	1.95	0.48
1:A:107:PRO:HB2	1:A:338:VAL:HG11	1.96	0.48
2:B:26:GLN:NE2	2:B:65:HIS:HB3	2.28	0.48
1:A:410:VAL:HG11	1:A:432:LYS:HG3	1.96	0.48
2:B:69:GLN:O	2:B:110:ALA:HA	2.13	0.48
2:B:271:PRO:HA	2:B:312:ASN:HB3	1.96	0.48
1:A:295:ILE:HG13	1:A:463:PRO:HB3	1.96	0.48
2:B:245:SER:HB3	2:B:261:GLN:HB2	1.96	0.47
2:B:237:THR:HA	2:B:268:ASP:HB3	1.96	0.47
1:A:291:SER:OG	1:A:386:GLU:OE2	2.20	0.47
2:B:218:VAL:O	2:B:221:VAL:HG23	2.15	0.47
1:A:48:TYR:O	1:A:92:SER:OG	2.23	0.47
1:A:76:THR:OG1	1:A:89:ALA:O	2.32	0.47
1:A:52:ARG:HH11	1:A:98:GLN:HG2	1.80	0.47
2:B:30:VAL:O	2:B:61:LEU:HB2	2.15	0.47
2:B:277:HIS:HD2	2:B:282:LEU:HG	1.80	0.47
1:A:178:PRO:HG2	1:A:207:VAL:HG22	1.97	0.46
1:A:102:LEU:HD22	1:A:194:ASN:HD22	1.80	0.46
2:B:65:HIS:HB3	2:B:66:PRO:HD3	1.97	0.46
2:B:158:THR:HG23	2:B:196:THR:HG22	1.98	0.46
1:A:52:ARG:HD2	1:A:98:GLN:HG2	1.97	0.46

*Continued on next page...*

*Continued from previous page...*

Atom-1	Atom-2	Interatomic distance (Å)	Clash overlap (Å)
2:B:183:GLY:HA2	2:B:202:LYS:HE2	1.98	0.46
1:A:110:LEU:HA	1:A:114:LEU:HD21	1.97	0.45
1:A:311:LEU:HB2	1:A:342:VAL:HG21	1.98	0.45
1:A:242:LEU:HB3	1:A:283:LEU:HB3	1.98	0.44
1:A:381:GLY:HA3	1:A:481:TYR:CD2	2.52	0.44
1:A:182:PHE:HA	1:A:262:PHE:O	2.17	0.44
1:A:549:GLN:HB3	1:A:550:PRO:HD3	1.98	0.44
2:B:276:SER:O	2:B:306:TYR:HA	2.17	0.44
1:A:315:VAL:HB	1:A:332:LYS:HE2	1.99	0.44
1:A:410:VAL:HG12	1:A:428:ARG:HG3	2.00	0.44
2:B:268:ASP:HB3	2:B:269:PRO:HD3	2.00	0.44
1:A:180:MET:HA	1:A:260:THR:O	2.17	0.44
1:A:243:ARG:O	1:A:247:GLU:HG2	2.18	0.44
1:A:102:LEU:HD13	1:A:194:ASN:HB3	1.99	0.43
1:A:511:PRO:HG3	1:A:523:PHE:CE1	2.52	0.43
1:A:492:ARG:NH2	1:A:497:ASP:O	2.42	0.43
2:B:31:HIS:HA	2:B:59:GLN:O	2.18	0.43
2:B:27:ALA:HB2	2:B:112:ASN:HB3	2.00	0.43
1:A:457:ASP:OD2	1:A:594:ARG:NH2	2.39	0.42
1:A:119:LEU:HD23	1:A:119:LEU:HA	1.88	0.42
1:A:279:HIS:HD2	1:A:359:VAL:HA	1.84	0.42
1:A:105:ALA:HA	1:A:213:ASN:ND2	2.34	0.42
1:A:424:LYS:HE2	2:B:185:ASP:CG	2.39	0.42
1:A:50:ARG:NH2	1:A:94:PRO:O	2.51	0.42
1:A:115:PRO:HB3	2:B:147:PHE:CZ	2.55	0.42
1:A:185:GLY:HA3	1:A:267:GLY:H	1.84	0.42
1:A:435:TYR:CZ	1:A:597:LYS:HD2	2.55	0.42
2:B:211:SER:HB3	2:B:232:ARG:HD3	2.01	0.42
1:A:148:VAL:HG22	1:A:208:ILE:HG23	2.02	0.42
2:B:234:THR:OG1	2:B:235:ASN:N	2.53	0.42
1:A:69:PHE:O	1:A:145:ASN:HA	2.20	0.42
1:A:196:PHE:HE1	1:A:504:LEU:HD13	1.85	0.42
1:A:375:ASN:OD1	1:A:476:SER:OG	2.31	0.41
2:B:29:ILE:CD1	2:B:110:ALA:HB2	2.49	0.41
2:B:244:LEU:HD22	2:B:320:LYS:HB3	2.01	0.41
1:A:279:HIS:CD2	1:A:359:VAL:HA	2.54	0.41
2:B:249:THR:HA	2:B:323:ASN:HB3	2.01	0.41
2:B:31:HIS:CE1	2:B:122:ILE:HD11	2.55	0.41
2:B:57:MET:HA	2:B:93:LEU:O	2.20	0.41
2:B:45:GLU:HB2	2:B:46:ARG:H	1.65	0.41
1:A:381:GLY:HA2	1:A:481:TYR:O	2.21	0.41

*Continued on next page...*

Continued from previous page...

Atom-1	Atom-2	Interatomic distance (Å)	Clash overlap (Å)
2:B:71:ARG:HG2	2:B:73:THR:HG23	2.03	0.41
1:A:176:LYS:HB3	1:A:255:ASP:HB2	2.03	0.40
1:A:249:ILE:HD12	1:A:249:ILE:HA	1.95	0.40
1:A:415:ASP:HB3	1:A:420:TYR:CE2	2.56	0.40
1:A:511:PRO:HB2	1:A:528:VAL:HA	2.03	0.40
1:A:580:TYR:CE1	1:A:593:TYR:HB2	2.56	0.40
2:B:134:LEU:H	2:B:229:ILE:HD13	1.86	0.40
2:B:52:GLU:OE2	2:B:100:ARG:NH1	2.55	0.40
2:B:242:LEU:HD21	2:B:310:ALA:HB2	2.02	0.40
1:A:264:SER:HA	1:A:290:GLN:O	2.21	0.40
1:A:420:TYR:CE2	2:B:202:LYS:HD3	2.56	0.40

There are no symmetry-related clashes.

## 5.3 Torsion angles [i](#)

### 5.3.1 Protein backbone [i](#)

In the following table, the Percentiles column shows the percent Ramachandran outliers of the chain as a percentile score with respect to all X-ray entries followed by that with respect to entries of similar resolution.

The Analysed column shows the number of residues for which the backbone conformation was analysed, and the total number of residues.

Mol	Chain	Analysed	Favoured	Allowed	Outliers	Percentiles	
1	A	517/576 (90%)	487 (94%)	29 (6%)	1 (0%)	47	78
2	B	284/319 (89%)	264 (93%)	19 (7%)	1 (0%)	34	67
All	All	801/895 (90%)	751 (94%)	48 (6%)	2 (0%)	47	78

All (2) Ramachandran outliers are listed below:

Mol	Chain	Res	Type
2	B	313	ASN
1	A	570	TRP

### 5.3.2 Protein sidechains [i](#)

In the following table, the Percentiles column shows the percent sidechain outliers of the chain as a percentile score with respect to all X-ray entries followed by that with respect to entries of similar resolution.

The Analysed column shows the number of residues for which the sidechain conformation was analysed, and the total number of residues.

Mol	Chain	Analysed	Rotameric	Outliers	Percentiles	
1	A	435/481 (90%)	430 (99%)	5 (1%)	73	88
2	B	251/274 (92%)	249 (99%)	2 (1%)	81	92
All	All	686/755 (91%)	679 (99%)	7 (1%)	76	89

All (7) residues with a non-rotameric sidechain are listed below:

Mol	Chain	Res	Type
1	A	298	TRP
1	A	427	LEU
1	A	487	CYS
1	A	538	TRP
1	A	609	HIS
2	B	67	ARG
2	B	277	HIS

Sometimes sidechains can be flipped to improve hydrogen bonding and reduce clashes. All (1) such sidechains are listed below:

Mol	Chain	Res	Type
2	B	26	GLN

### 5.3.3 RNA [i](#)

There are no RNA molecules in this entry.

## 5.4 Non-standard residues in protein, DNA, RNA chains [i](#)

There are no non-standard protein/DNA/RNA residues in this entry.

## 5.5 Carbohydrates [i](#)

2 monosaccharides are modelled in this entry.

In the following table, the Counts columns list the number of bonds (or angles) for which Mogul statistics could be retrieved, the number of bonds (or angles) that are observed in the model and the number of bonds (or angles) that are defined in the Chemical Component Dictionary. The Link column lists molecule types, if any, to which the group is linked. The Z score for a bond length (or angle) is the number of standard deviations the observed value is removed from the expected value. A bond length (or angle) with  $|Z| > 2$  is considered an outlier worth inspection. RMSZ is the root-mean-square of all Z scores of the bond lengths (or angles).

Mol	Type	Chain	Res	Link	Bond lengths			Bond angles		
					Counts	RMSZ	# Z  > 2	Counts	RMSZ	# Z  > 2
3	NAG	C	1	2,3	14,14,15	0.52	0	17,19,21	0.44	0
3	NAG	C	2	3	14,14,15	0.59	0	17,19,21	0.44	0

In the following table, the Chirals column lists the number of chiral outliers, the number of chiral centers analysed, the number of these observed in the model and the number defined in the Chemical Component Dictionary. Similar counts are reported in the Torsion and Rings columns. '-' means no outliers of that kind were identified.

Mol	Type	Chain	Res	Link	Chirals	Torsions	Rings
3	NAG	C	1	2,3	-	4/6/23/26	0/1/1/1
3	NAG	C	2	3	-	4/6/23/26	0/1/1/1

There are no bond length outliers.

There are no bond angle outliers.

There are no chirality outliers.

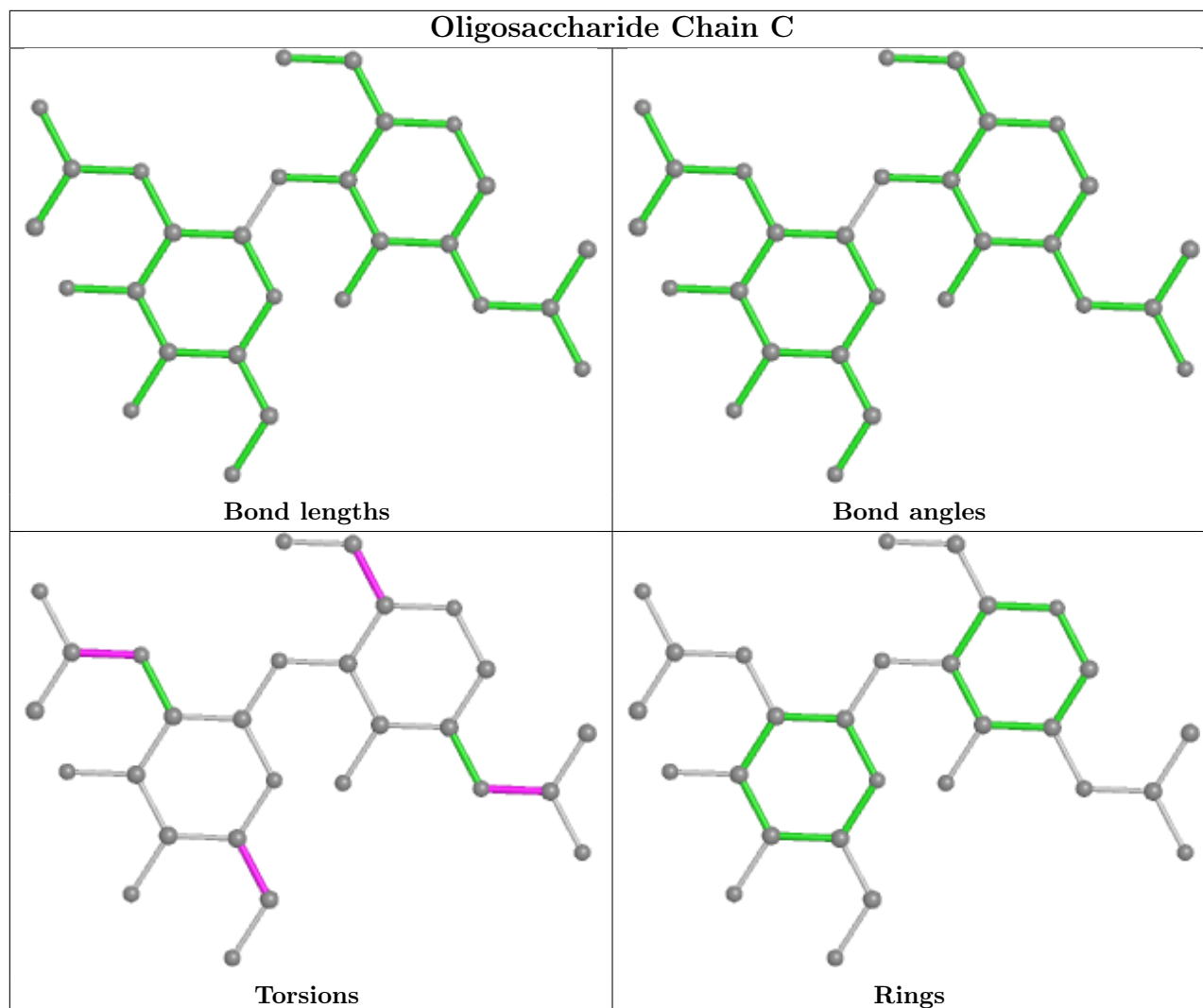
All (8) torsion outliers are listed below:

Mol	Chain	Res	Type	Atoms
3	C	2	NAG	O5-C5-C6-O6
3	C	1	NAG	O5-C5-C6-O6
3	C	2	NAG	C4-C5-C6-O6
3	C	1	NAG	C8-C7-N2-C2
3	C	1	NAG	O7-C7-N2-C2
3	C	2	NAG	C8-C7-N2-C2
3	C	2	NAG	O7-C7-N2-C2
3	C	1	NAG	C4-C5-C6-O6

There are no ring outliers.

No monomer is involved in short contacts.

The following is a two-dimensional graphical depiction of Mogul quality analysis of bond lengths, bond angles, torsion angles, and ring geometry for oligosaccharide.



## 5.6 Ligand geometry [i](#)

3 ligands are modelled in this entry.

In the following table, the Counts columns list the number of bonds (or angles) for which Mogul statistics could be retrieved, the number of bonds (or angles) that are observed in the model and the number of bonds (or angles) that are defined in the Chemical Component Dictionary. The Link column lists molecule types, if any, to which the group is linked. The Z score for a bond length (or angle) is the number of standard deviations the observed value is removed from the expected value. A bond length (or angle) with  $|Z| > 2$  is considered an outlier worth inspection. RMSZ is the root-mean-square of all Z scores of the bond lengths (or angles).

Mol	Type	Chain	Res	Link	Bond lengths			Bond angles		
					Counts	RMSZ	# $ Z  > 2$	Counts	RMSZ	# $ Z  > 2$
4	NAG	B	404	2	14,14,15	0.36	0	17,19,21	0.49	0
4	NAG	B	403	2	14,14,15	0.19	0	17,19,21	0.39	0
4	NAG	A	701	1	14,14,15	2.46	1 (7%)	17,19,21	1.03	1 (5%)

In the following table, the Chirals column lists the number of chiral outliers, the number of chiral centers analysed, the number of these observed in the model and the number defined in the Chemical Component Dictionary. Similar counts are reported in the Torsion and Rings columns. '-' means no outliers of that kind were identified.

Mol	Type	Chain	Res	Link	Chirals	Torsions	Rings
4	NAG	B	404	2	-	4/6/23/26	0/1/1/1
4	NAG	B	403	2	-	2/6/23/26	0/1/1/1
4	NAG	A	701	1	-	4/6/23/26	0/1/1/1

All (1) bond length outliers are listed below:

Mol	Chain	Res	Type	Atoms	Z	Observed(Å)	Ideal(Å)
4	A	701	NAG	O5-C1	8.95	1.58	1.43

All (1) bond angle outliers are listed below:

Mol	Chain	Res	Type	Atoms	Z	Observed(°)	Ideal(°)
4	A	701	NAG	O5-C5-C6	2.16	110.58	107.20

There are no chirality outliers.

All (10) torsion outliers are listed below:

Mol	Chain	Res	Type	Atoms
4	A	701	NAG	O5-C5-C6-O6
4	B	404	NAG	O5-C5-C6-O6
4	A	701	NAG	C4-C5-C6-O6
4	A	701	NAG	C8-C7-N2-C2
4	A	701	NAG	O7-C7-N2-C2
4	B	403	NAG	C8-C7-N2-C2
4	B	403	NAG	O7-C7-N2-C2
4	B	404	NAG	C8-C7-N2-C2
4	B	404	NAG	O7-C7-N2-C2
4	B	404	NAG	C4-C5-C6-O6

There are no ring outliers.

1 monomer is involved in 1 short contact:

Mol	Chain	Res	Type	Clashes	Symm-Clashes
4	A	701	NAG	1	0



## 5.7 Other polymers [i](#)

There are no such residues in this entry.

## 5.8 Polymer linkage issues [i](#)

There are no chain breaks in this entry.

## 6 Fit of model and data

### 6.1 Protein, DNA and RNA chains

In the following table, the column labelled ‘#RSRZ > 2’ contains the number (and percentage) of RSRZ outliers, followed by percent RSRZ outliers for the chain as percentile scores relative to all X-ray entries and entries of similar resolution. The OWAB column contains the minimum, median, 95<sup>th</sup> percentile and maximum values of the occupancy-weighted average B-factor per residue. The column labelled ‘Q < 0.9’ lists the number of (and percentage) of residues with an average occupancy less than 0.9.

Mol	Chain	Analysed	<RSRZ>	#RSRZ>2	OWAB(Å <sup>2</sup> )	Q<0.9
1	A	525/576 (91%)	0.05	5 (0%) <span style="border: 1px solid blue; padding: 2px;">82</span> <span style="border: 1px solid blue; padding: 2px;">70</span>	37, 68, 98, 130	0
2	B	292/319 (91%)	0.48	26 (8%) <span style="border: 1px solid red; padding: 2px;">9</span> <span style="border: 1px solid red; padding: 2px;">4</span>	51, 85, 115, 125	0
All	All	817/895 (91%)	0.20	31 (3%) <span style="border: 1px solid red; padding: 2px;">40</span> <span style="border: 1px solid red; padding: 2px;">21</span>	37, 74, 106, 130	0

All (31) RSRZ outliers are listed below:

Mol	Chain	Res	Type	RSRZ
2	B	144	ARG	4.8
2	B	71	ARG	4.5
2	B	34	GLN	3.7
2	B	290	GLY	3.5
2	B	176	LEU	3.3
2	B	76	ALA	3.2
2	B	88	VAL	3.2
2	B	111	GLU	3.0
1	A	564	ARG	3.0
2	B	70	VAL	3.0
2	B	325	LEU	2.9
2	B	29	ILE	2.9
2	B	110	ALA	2.9
1	A	584	GLY	2.8
2	B	175	THR	2.8
2	B	324	LEU	2.6
2	B	36	CYS	2.5
2	B	284	LEU	2.5
2	B	294	SER	2.5
1	A	136	ASN	2.5
2	B	97	ARG	2.5
2	B	288	ALA	2.5
2	B	41	ASP	2.4
2	B	180	GLN	2.4

*Continued on next page...*

*Continued from previous page...*

Mol	Chain	Res	Type	RSRZ
2	B	143	VAL	2.3
2	B	233	LEU	2.2
2	B	87	SER	2.2
1	A	485	HIS	2.2
1	A	565	PHE	2.1
2	B	89	PHE	2.1
2	B	109	LYS	2.0

## 6.2 Non-standard residues in protein, DNA, RNA chains [i](#)

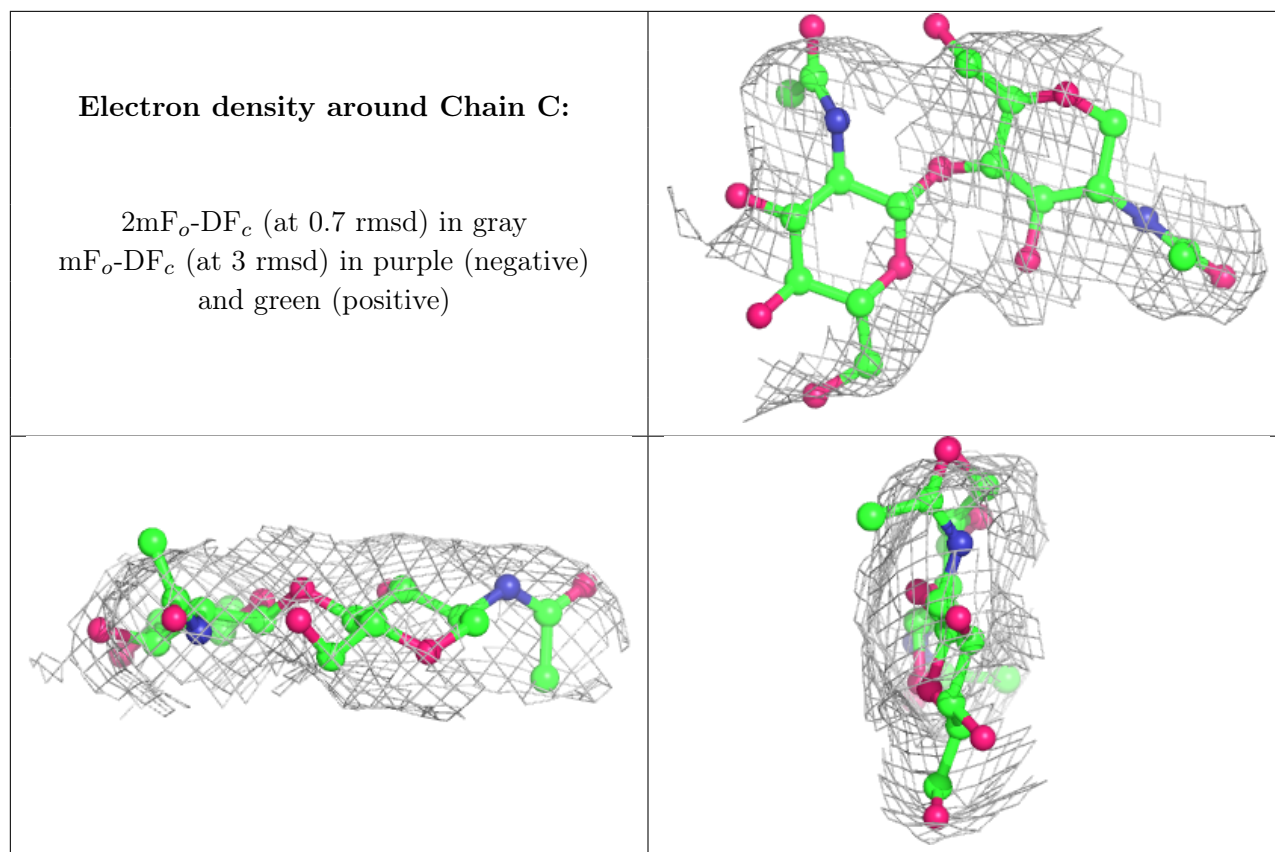
There are no non-standard protein/DNA/RNA residues in this entry.

## 6.3 Carbohydrates [i](#)

In the following table, the Atoms column lists the number of modelled atoms in the group and the number defined in the chemical component dictionary. The B-factors column lists the minimum, median, 95<sup>th</sup> percentile and maximum values of B factors of atoms in the group. The column labelled 'Q< 0.9' lists the number of atoms with occupancy less than 0.9.

Mol	Type	Chain	Res	Atoms	RSCC	RSR	B-factors(Å <sup>2</sup> )	Q<0.9
3	NAG	C	2	14/15	0.84	0.22	96,111,115,124	0
3	NAG	C	1	14/15	0.87	0.24	84,94,103,105	0

The following is a graphical depiction of the model fit to experimental electron density for oligosaccharide. Each fit is shown from different orientation to approximate a three-dimensional view.



## 6.4 Ligands [i](#)

In the following table, the Atoms column lists the number of modelled atoms in the group and the number defined in the chemical component dictionary. The B-factors column lists the minimum, median, 95<sup>th</sup> percentile and maximum values of B factors of atoms in the group. The column labelled 'Q < 0.9' lists the number of atoms with occupancy less than 0.9.

Mol	Type	Chain	Res	Atoms	RSCC	RSR	B-factors(Å <sup>2</sup> )	Q<0.9
4	NAG	B	403	14/15	0.73	0.31	114,128,136,140	0
4	NAG	A	701	14/15	0.74	0.22	111,120,127,129	0
4	NAG	B	404	14/15	0.82	0.40	116,120,125,128	0

## 6.5 Other polymers [i](#)

There are no such residues in this entry.