



Full wwPDB X-ray Structure Validation Report ⓘ

Mar 18, 2024 – 10:30 AM JST

PDB ID : 5XHP
Title : Transferase with ligands
Authors : Park, J.; Yoo, Y.; Kim, Y.H.; Cho, H.S.
Deposited on : 2017-04-22
Resolution : 2.80 Å(reported)

This is a Full wwPDB X-ray Structure Validation Report for a publicly released PDB entry.

We welcome your comments at validation@mail.wwpdb.org

A user guide is available at

<https://www.wwpdb.org/validation/2017/XrayValidationReportHelp>

with specific help available everywhere you see the ⓘ symbol.

The types of validation reports are described at

<http://www.wwpdb.org/validation/2017/FAQs#types>.

The following versions of software and data (see [references ⓘ](#)) were used in the production of this report:

MolProbity : 4.02b-467
Mogul : 1.8.5 (274361), CSD as541be (2020)
Xtriage (Phenix) : 1.13
EDS : 2.36
buster-report : 1.1.7 (2018)
Percentile statistics : 20191225.v01 (using entries in the PDB archive December 25th 2019)
Refmac : 5.8.0158
CCP4 : 7.0.044 (Gargrove)
Ideal geometry (proteins) : Engh & Huber (2001)
Ideal geometry (DNA, RNA) : Parkinson et al. (1996)
Validation Pipeline (wwPDB-VP) : 2.36

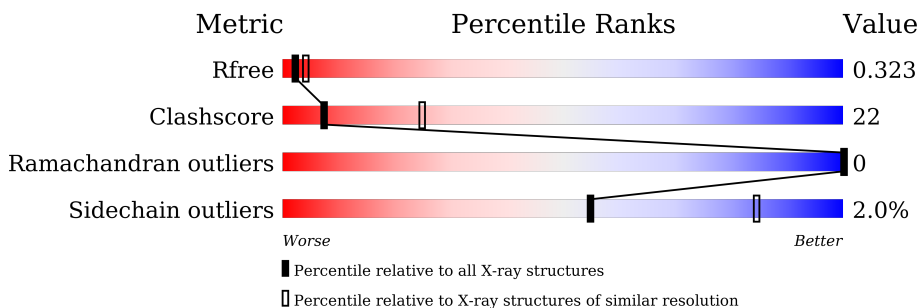
1 Overall quality at a glance

The following experimental techniques were used to determine the structure:

X-RAY DIFFRACTION

The reported resolution of this entry is 2.80 Å.

Percentile scores (ranging between 0-100) for global validation metrics of the entry are shown in the following graphic. The table shows the number of entries on which the scores are based.



Metric	Whole archive (#Entries)	Similar resolution (#Entries, resolution range(Å))
R_{free}	130704	3140 (2.80-2.80)
Clashscore	141614	3569 (2.80-2.80)
Ramachandran outliers	138981	3498 (2.80-2.80)
Sidechain outliers	138945	3500 (2.80-2.80)

The table below summarises the geometric issues observed across the polymeric chains and their fit to the electron density. The red, orange, yellow and green segments of the lower bar indicate the fraction of residues that contain outliers for ≥ 3 , 2, 1 and 0 types of geometric quality criteria respectively. A grey segment represents the fraction of residues that are not modelled. The numeric value for each fraction is indicated below the corresponding segment, with a dot representing fractions $\leq 5\%$.

Mol	Chain	Length	Quality of chain
1	E	348	 57% 29% • 13%
1	F	348	 54% 33% • 13%

The following table lists non-polymeric compounds, carbohydrate monomers and non-standard residues in protein, DNA, RNA chains that are outliers for geometric or electron-density-fit criteria:

Mol	Type	Chain	Res	Chirality	Geometry	Clashes	Electron density
2	ARG	F	401	-	-	X	-

2 Entry composition [i](#)

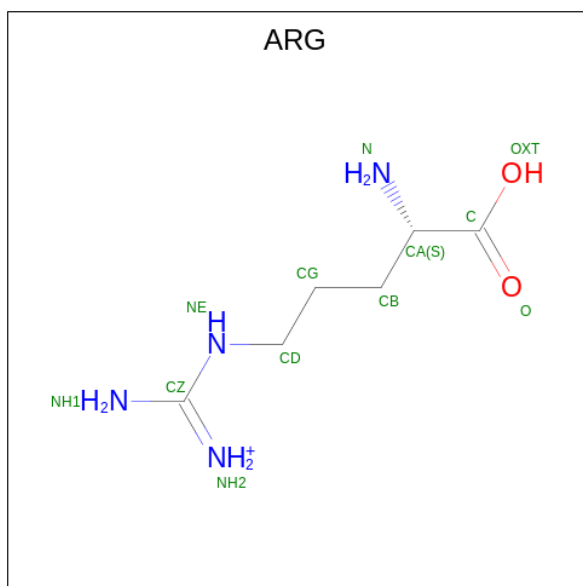
There are 4 unique types of molecules in this entry. The entry contains 4960 atoms, of which 0 are hydrogens and 0 are deuteriums.

In the tables below, the ZeroOcc column contains the number of atoms modelled with zero occupancy, the AltConf column contains the number of residues with at least one atom in alternate conformation and the Trace column contains the number of residues modelled with at most 2 atoms.

- Molecule 1 is a protein called Putative cytoplasmic protein.

Mol	Chain	Residues	Atoms					ZeroOcc	AltConf	Trace
			Total	C	N	O	S			
1	F	303	Total	C	N	O	S	0	0	0
			2442	1560	417	458	7			
1	E	303	Total	C	N	O	S	0	0	0
			2442	1560	417	458	7			

- Molecule 2 is ARGinine (three-letter code: ARG) (formula: $C_6H_{15}N_4O_2$).

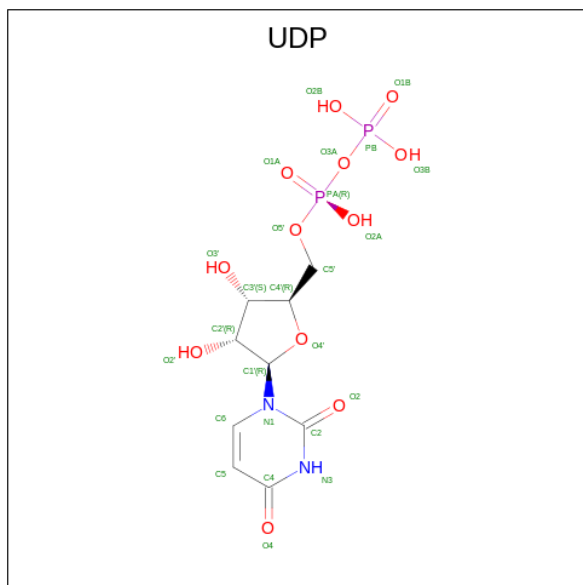


Mol	Chain	Residues	Atoms				ZeroOcc	AltConf
			Total	C	N	O		
2	F	1	Total	C	N	O	0	0
			12	6	4	2		
2	E	1	Total	C	N	O	0	0
			12	6	4	2		

- Molecule 3 is MANGANESE (II) ION (three-letter code: MN) (formula: Mn).

Mol	Chain	Residues	Atoms	ZeroOcc	AltConf
3	F	1	Total Mn 1 1	0	0
3	E	1	Total Mn 1 1	0	0

- Molecule 4 is URIDINE-5'-DIPHOSPHATE (three-letter code: UDP) (formula: C₉H₁₄N₂O₁₂P₂).



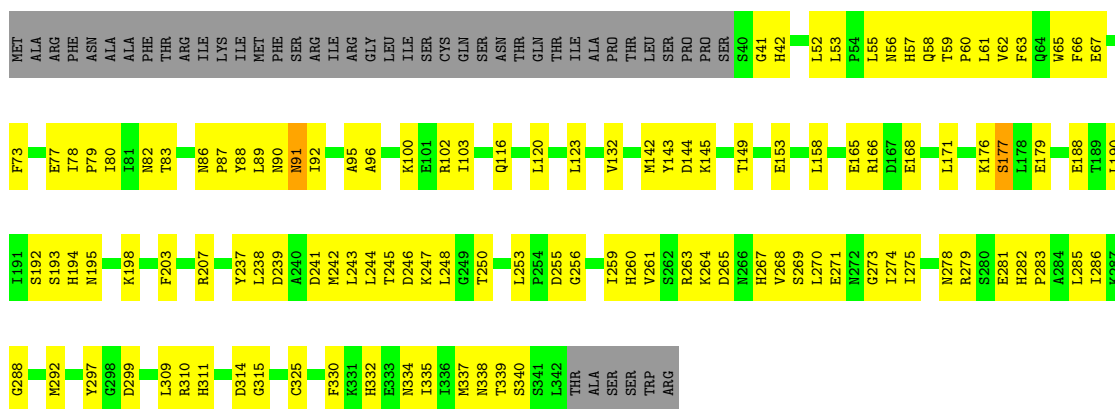
Mol	Chain	Residues	Atoms	ZeroOcc	AltConf
4	F	1	Total C N O P 25 9 2 12 2	0	0
4	E	1	Total C N O P 25 9 2 12 2	0	0

3 Residue-property plots

These plots are drawn for all protein, RNA, DNA and oligosaccharide chains in the entry. The first graphic for a chain summarises the proportions of the various outlier classes displayed in the second graphic. The second graphic shows the sequence view annotated by issues in geometry. Residues are color-coded according to the number of geometric quality criteria for which they contain at least one outlier: green = 0, yellow = 1, orange = 2 and red = 3 or more. Stretches of 2 or more consecutive residues without any outlier are shown as a green connector. Residues present in the sample, but not in the model, are shown in grey.

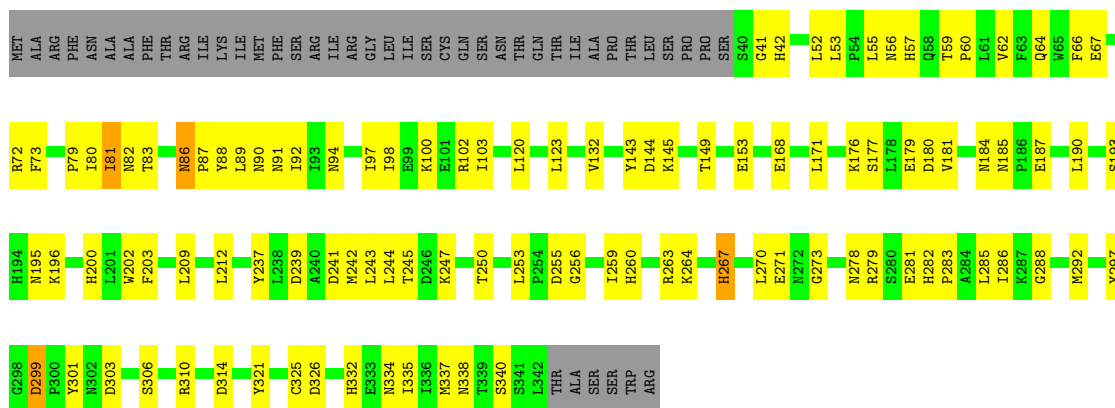
- Molecule 1: Putative cytoplasmic protein

Chain F: 



- Molecule 1: Putative cytoplasmic protein

Chain E: 



4 Data and refinement statistics i

Property	Value	Source
Space group	P 32	Depositor
Cell constants a, b, c, α , β , γ	50.12Å 50.12Å 201.70Å 90.00° 90.00° 120.00°	Depositor
Resolution (Å)	43.40 – 2.80 43.40 – 2.80	Depositor EDS
% Data completeness (in resolution range)	99.8 (43.40-2.80) 99.8 (43.40-2.80)	Depositor EDS
R_{merge}	(Not available)	Depositor
R_{sym}	(Not available)	Depositor
$\langle I/\sigma(I) \rangle$ ¹	2.57 (at 2.81Å)	Xtrriage
Refinement program	REFMAC 5.8.0158	Depositor
R, R_{free}	0.288 , 0.319 0.290 , 0.323	Depositor DCC
R_{free} test set	675 reflections (4.84%)	wwPDB-VP
Wilson B-factor (Å ²)	66.9	Xtrriage
Anisotropy	0.041	Xtrriage
Bulk solvent k_{sol} (e/Å ³), B_{sol} (Å ²)	0.33 , 34.7	EDS
L-test for twinning ²	$\langle L \rangle = 0.40$, $\langle L^2 \rangle = 0.23$	Xtrriage
Estimated twinning fraction	0.467 for -h,-k,l 0.477 for h,-h-k,-l 0.469 for -k,-h,-l	Xtrriage
F_o, F_c correlation	0.93	EDS
Total number of atoms	4960	wwPDB-VP
Average B, all atoms (Å ²)	68.0	wwPDB-VP

Xtrriage's analysis on translational NCS is as follows: *The largest off-origin peak in the Patterson function is 5.12% of the height of the origin peak. No significant pseudotranslation is detected.*

¹Intensities estimated from amplitudes.

²Theoretical values of $\langle |L| \rangle$, $\langle L^2 \rangle$ for acentric reflections are 0.5, 0.333 respectively for untwinned datasets, and 0.375, 0.2 for perfectly twinned datasets.

5 Model quality [i](#)

5.1 Standard geometry [i](#)

Bond lengths and bond angles in the following residue types are not validated in this section: MN, UDP

The Z score for a bond length (or angle) is the number of standard deviations the observed value is removed from the expected value. A bond length (or angle) with $|Z| > 5$ is considered an outlier worth inspection. RMSZ is the root-mean-square of all Z scores of the bond lengths (or angles).

Mol	Chain	Bond lengths		Bond angles	
		RMSZ	# Z >5	RMSZ	# Z >5
1	E	0.52	0/2501	0.73	0/3383
1	F	0.55	0/2501	0.74	0/3383
All	All	0.54	0/5002	0.73	0/6766

Chiral center outliers are detected by calculating the chiral volume of a chiral center and verifying if the center is modelled as a planar moiety or with the opposite hand. A planarity outlier is detected by checking planarity of atoms in a peptide group, atoms in a mainchain group or atoms of a sidechain that are expected to be planar.

Mol	Chain	#Chirality outliers	#Planarity outliers
1	F	0	1

There are no bond length outliers.

There are no bond angle outliers.

There are no chirality outliers.

All (1) planarity outliers are listed below:

Mol	Chain	Res	Type	Group
1	F	264	LYS	Peptide

5.2 Too-close contacts [i](#)

In the following table, the Non-H and H(model) columns list the number of non-hydrogen atoms and hydrogen atoms in the chain respectively. The H(added) column lists the number of hydrogen atoms added and optimized by MolProbity. The Clashes column lists the number of clashes within the asymmetric unit, whereas Symm-Clashes lists symmetry-related clashes.

Mol	Chain	Non-H	H(model)	H(added)	Clashes	Symm-Clashes
1	E	2442	0	2391	113	0
1	F	2442	0	2389	106	2
2	E	12	0	12	2	0
2	F	12	0	12	6	0
3	E	1	0	0	0	0
3	F	1	0	0	0	0
4	E	25	0	11	0	0
4	F	25	0	11	0	0
All	All	4960	0	4826	218	2

The all-atom clashscore is defined as the number of clashes found per 1000 atoms (including hydrogen atoms). The all-atom clashscore for this structure is 22.

All (218) close contacts within the same asymmetric unit are listed below, sorted by their clash magnitude.

Atom-1	Atom-2	Interatomic distance (Å)	Clash overlap (Å)
1:F:270:LEU:CD2	1:F:325:CYS:SG	2.10	1.40
1:E:80:ILE:C	1:E:89:LEU:HD21	1.07	1.39
1:E:80:ILE:O	1:E:89:LEU:CD2	1.73	1.37
1:E:80:ILE:CB	1:E:89:LEU:CD2	2.05	1.35
1:E:80:ILE:CG2	1:E:89:LEU:HD23	1.54	1.35
1:E:80:ILE:C	1:E:89:LEU:CD2	1.95	1.33
1:F:270:LEU:HD21	1:F:325:CYS:SG	1.67	1.33
1:E:80:ILE:HB	1:E:89:LEU:CD2	1.60	1.31
1:E:80:ILE:O	1:E:89:LEU:HD21	1.10	1.25
1:E:80:ILE:CA	1:E:89:LEU:HD21	1.65	1.25
1:E:80:ILE:O	1:E:89:LEU:CD1	1.90	1.19
1:E:80:ILE:O	1:E:89:LEU:CG	1.93	1.17
1:E:80:ILE:O	1:E:89:LEU:HD11	1.37	1.11
1:E:80:ILE:HB	1:E:89:LEU:HD22	1.17	1.09
1:F:270:LEU:HD23	1:F:325:CYS:SG	1.84	1.06
1:E:83:THR:HG23	1:E:86:ASN:H	1.19	1.04
1:E:80:ILE:HG22	1:E:89:LEU:HD23	1.02	1.00
1:E:80:ILE:CG2	1:E:89:LEU:CD2	2.34	0.98
1:E:80:ILE:HG22	1:E:89:LEU:CD2	1.92	0.96
1:E:190:LEU:O	1:E:193:SER:OG	1.85	0.95
1:F:338:ASN:HD21	2:F:401:ARG:HB2	1.33	0.94
1:E:338:ASN:HD21	2:E:401:ARG:HB2	1.33	0.94
1:E:82:ASN:ND2	1:E:89:LEU:HB2	1.83	0.93
1:F:259:ILE:HD13	1:F:309:LEU:HD11	1.51	0.92
1:F:261:VAL:HG13	1:F:269:SER:O	1.73	0.89
1:E:83:THR:HG21	1:E:86:ASN:HD22	1.32	0.89

Continued on next page...

Continued from previous page...

Atom-1	Atom-2	Interatomic distance (Å)	Clash overlap (Å)
1:E:270:LEU:HD12	1:E:325:CYS:SG	2.15	0.87
1:F:239:ASP:OD2	1:F:273:GLY:HA2	1.75	0.87
1:F:244:LEU:HD22	1:F:248:LEU:HD21	1.58	0.85
1:E:80:ILE:CA	1:E:89:LEU:CD2	2.39	0.85
1:E:80:ILE:CB	1:E:89:LEU:HD23	1.88	0.84
1:E:263:ARG:NH2	1:E:326:ASP:OD1	2.13	0.80
1:E:270:LEU:CD1	1:E:325:CYS:SG	2.70	0.80
1:E:83:THR:HG23	1:E:86:ASN:N	1.98	0.78
1:E:247:LYS:O	1:E:334:ASN:ND2	2.18	0.77
1:E:82:ASN:OD1	1:E:89:LEU:N	2.18	0.76
1:E:177:SER:OG	1:E:297:TYR:OH	2.03	0.76
1:E:59:THR:O	1:E:102:ARG:HD3	1.89	0.73
1:F:55:LEU:HD11	1:F:278:ASN:HB3	1.70	0.73
1:E:55:LEU:HD11	1:E:278:ASN:HB3	1.70	0.71
1:E:83:THR:CG2	1:E:86:ASN:HD22	2.05	0.70
1:F:244:LEU:CD2	1:F:248:LEU:HD21	2.21	0.70
1:F:190:LEU:O	1:F:193:SER:OG	2.09	0.69
1:F:239:ASP:CG	1:F:273:GLY:HA2	2.12	0.69
1:E:144:ASP:OD1	1:E:145:LYS:N	2.25	0.69
1:F:88:TYR:CE1	1:F:241:ASP:HB3	2.28	0.68
1:E:177:SER:HG	1:E:297:TYR:HH	1.40	0.68
1:F:144:ASP:OD1	1:F:145:LYS:N	2.26	0.67
1:F:65:TRP:NE1	1:F:67:GLU:OE2	2.28	0.67
1:E:81:ILE:C	1:E:89:LEU:HG	2.15	0.66
1:E:82:ASN:CG	1:E:89:LEU:HB2	2.16	0.66
1:F:338:ASN:ND2	2:F:401:ARG:HB2	2.09	0.66
1:E:264:LYS:O	1:E:267:HIS:ND1	2.29	0.65
1:F:239:ASP:OD2	1:F:273:GLY:CA	2.44	0.65
1:E:338:ASN:ND2	2:E:401:ARG:HB2	2.09	0.65
1:E:55:LEU:HD13	1:E:253:LEU:HD23	1.79	0.65
1:F:82:ASN:OD1	1:F:90:ASN:N	2.29	0.65
1:E:92:ILE:HD12	1:E:92:ILE:N	2.12	0.65
1:E:82:ASN:OD1	1:E:90:ASN:N	2.28	0.65
1:F:57:HIS:O	1:F:102:ARG:HG3	1.97	0.64
1:E:83:THR:HG21	1:E:86:ASN:ND2	2.09	0.64
1:F:59:THR:O	1:F:102:ARG:HD3	1.98	0.64
1:E:88:TYR:CE1	1:E:241:ASP:HB3	2.33	0.64
1:F:261:VAL:CG1	1:F:268:VAL:HG12	2.29	0.63
1:F:55:LEU:HD13	1:F:253:LEU:HD23	1.80	0.63
1:F:263:ARG:HA	1:F:267:HIS:O	2.00	0.62
1:E:181:VAL:O	1:E:185:ASN:O	2.17	0.62

Continued on next page...

Continued from previous page...

Atom-1	Atom-2	Interatomic distance (Å)	Clash overlap (Å)
1:E:57:HIS:O	1:E:102:ARG:HG3	1.99	0.62
1:F:95:ALA:HB1	1:F:244:LEU:HD12	1.80	0.61
1:F:259:ILE:CD1	1:F:309:LEU:HD11	2.27	0.61
1:F:190:LEU:O	1:F:194:HIS:CD2	2.53	0.61
1:F:80:ILE:O	1:F:89:LEU:HD22	2.01	0.61
1:F:247:LYS:O	1:F:334:ASN:ND2	2.33	0.61
1:E:83:THR:N	1:E:86:ASN:O	2.33	0.61
1:F:55:LEU:HD11	1:F:278:ASN:CB	2.31	0.61
1:E:239:ASP:HB3	1:E:241:ASP:OD1	2.01	0.61
1:E:282:HIS:HB3	1:E:285:LEU:HD23	1.83	0.61
1:F:282:HIS:HB3	1:F:285:LEU:HD23	1.83	0.60
1:F:61:LEU:CD1	1:F:244:LEU:HD11	2.31	0.60
1:F:246:ASP:OD1	1:F:247:LYS:N	2.35	0.60
1:E:82:ASN:HA	1:E:87:PRO:HA	1.82	0.59
1:E:92:ILE:HD12	1:E:92:ILE:H	1.65	0.59
1:F:207:ARG:HD3	1:F:237:TYR:CD2	2.37	0.59
1:E:55:LEU:HD11	1:E:278:ASN:CB	2.31	0.59
1:F:95:ALA:CB	1:F:244:LEU:HD12	2.33	0.59
1:F:310:ARG:O	1:F:314:ASP:N	2.30	0.59
1:F:243:LEU:HD11	1:F:339:THR:HG21	1.85	0.58
1:E:195:ASN:O	1:E:202:TRP:HB2	2.03	0.58
1:E:270:LEU:HD11	1:E:325:CYS:SG	2.43	0.58
1:F:78:ILE:HB	1:F:89:LEU:HD21	1.83	0.58
1:F:55:LEU:HD13	1:F:253:LEU:CD2	2.34	0.58
1:E:143:TYR:OH	1:E:281:GLU:OE1	2.13	0.57
1:F:83:THR:N	1:F:87:PRO:HA	2.20	0.57
1:E:55:LEU:HD13	1:E:253:LEU:CD2	2.34	0.57
1:E:310:ARG:O	1:E:314:ASP:N	2.33	0.57
1:F:82:ASN:HA	1:F:87:PRO:HA	1.87	0.56
1:F:168:GLU:HA	1:F:171:LEU:HB3	1.87	0.56
1:F:149:THR:O	1:F:153:GLU:HG3	2.05	0.56
1:E:245:THR:OG1	1:E:334:ASN:O	2.20	0.56
1:F:143:TYR:OH	1:F:281:GLU:OE1	2.10	0.55
1:E:149:THR:O	1:E:153:GLU:HG3	2.06	0.55
1:E:239:ASP:OD1	1:E:273:GLY:HA2	2.05	0.55
1:E:83:THR:HG22	1:E:86:ASN:O	2.06	0.55
1:F:259:ILE:HD13	1:F:309:LEU:CD1	2.33	0.54
1:E:97:ILE:O	1:E:100:LYS:HG3	2.07	0.54
1:E:196:LYS:HA	1:E:202:TRP:CD2	2.42	0.54
1:F:274:ILE:C	1:F:275:ILE:HG13	2.28	0.54
1:E:82:ASN:C	1:E:87:PRO:HA	2.28	0.54

Continued on next page...

Continued from previous page...

Atom-1	Atom-2	Interatomic distance (Å)	Clash overlap (Å)
1:E:56:ASN:HD21	1:E:57:HIS:CE1	2.27	0.53
1:E:168:GLU:HA	1:E:171:LEU:HB3	1.90	0.53
1:F:273:GLY:N	2:F:401:ARG:HH22	2.06	0.52
1:E:81:ILE:O	1:E:89:LEU:N	2.42	0.52
1:E:83:THR:HG22	1:E:86:ASN:HB2	1.92	0.51
1:E:98:ILE:HD12	1:E:244:LEU:HB3	1.92	0.51
1:E:253:LEU:HB2	1:E:256:GLY:HA2	1.91	0.51
1:F:242:MET:HE1	1:F:337:MET:HB3	1.93	0.51
1:F:95:ALA:CA	1:F:244:LEU:HD12	2.41	0.51
1:F:96:ALA:O	1:F:100:LYS:HD3	2.11	0.50
1:E:82:ASN:CA	1:E:87:PRO:HA	2.41	0.50
1:E:98:ILE:HG22	1:E:98:ILE:O	2.11	0.50
1:F:253:LEU:HB2	1:F:256:GLY:HA2	1.93	0.49
1:E:180:ASP:O	1:E:184:ASN:HB2	2.12	0.49
1:F:241:ASP:OD2	1:F:340:SER:OG	2.31	0.49
1:E:120:LEU:HB3	1:E:132:VAL:HG21	1.94	0.49
1:F:95:ALA:HA	1:F:244:LEU:HD12	1.94	0.49
1:F:243:LEU:CD1	1:F:339:THR:HG21	2.42	0.49
1:E:67:GLU:OE1	1:E:72:ARG:NH2	2.45	0.49
1:F:62:VAL:O	1:F:238:LEU:N	2.45	0.49
1:F:62:VAL:HB	1:F:237:TYR:HA	1.95	0.49
1:F:260:HIS:HB2	1:F:274:ILE:HB	1.94	0.49
1:F:311:HIS:O	1:F:315:GLY:HA2	2.13	0.49
1:E:88:TYR:HE1	1:E:241:ASP:HB3	1.77	0.49
1:F:259:ILE:CD1	1:F:309:LEU:CD1	2.89	0.49
1:E:81:ILE:O	1:E:89:LEU:HG	2.13	0.48
1:E:200:HIS:HA	1:E:203:PHE:CE1	2.48	0.48
1:F:242:MET:SD	1:F:338:ASN:N	2.87	0.48
1:E:94:ASN:O	1:E:98:ILE:HG13	2.13	0.48
1:F:207:ARG:HD3	1:F:237:TYR:CE2	2.48	0.48
1:E:259:ILE:HD11	1:E:270:LEU:HD23	1.94	0.48
1:F:239:ASP:OD1	1:F:273:GLY:HA2	2.12	0.48
1:F:188:GLU:OE1	1:F:192:SER:OG	2.22	0.47
1:E:239:ASP:HB2	1:E:242:MET:HG2	1.96	0.47
1:E:241:ASP:OD2	1:E:340:SER:OG	2.33	0.47
1:F:190:LEU:O	1:F:194:HIS:HD2	1.96	0.47
1:F:120:LEU:HB3	1:F:132:VAL:HG21	1.95	0.47
1:F:88:TYR:HE1	1:F:241:ASP:HB3	1.75	0.47
1:F:207:ARG:NH1	1:F:237:TYR:CE2	2.82	0.47
1:E:56:ASN:OD1	1:E:57:HIS:ND1	2.48	0.47
1:E:243:LEU:O	1:E:335:ILE:HA	2.15	0.47

Continued on next page...

Continued from previous page...

Atom-1	Atom-2	Interatomic distance (Å)	Clash overlap (Å)
1:F:79:PRO:HG3	1:F:116:GLN:HB3	1.96	0.47
1:E:242:MET:SD	1:E:338:ASN:N	2.87	0.47
1:F:195:ASN:OD1	1:F:198:LYS:HG2	2.15	0.47
1:F:245:THR:OG1	1:F:334:ASN:O	2.31	0.46
1:F:261:VAL:CG1	1:F:268:VAL:CG1	2.93	0.46
1:F:283:PRO:HA	1:F:286:ILE:HB	1.98	0.46
1:F:176:LYS:HA	1:F:179:GLU:HB3	1.98	0.46
1:F:278:ASN:HD21	1:F:279:ARG:HH12	1.64	0.46
1:F:78:ILE:O	1:F:80:ILE:N	2.41	0.46
1:F:61:LEU:HD11	1:F:244:LEU:HD11	1.97	0.45
1:F:177:SER:OG	1:F:297:TYR:OH	2.08	0.45
1:F:271:GLU:OE1	2:F:401:ARG:CZ	2.65	0.45
1:E:176:LYS:HA	1:E:179:GLU:HB3	1.97	0.45
1:E:283:PRO:HA	1:E:286:ILE:HB	1.98	0.45
1:F:61:LEU:HD22	1:F:238:LEU:HD11	1.98	0.45
1:F:239:ASP:HB3	1:F:241:ASP:OD1	2.17	0.45
1:F:56:ASN:OD1	1:F:58:GLN:HG3	2.17	0.45
1:E:120:LEU:O	1:E:123:LEU:HB3	2.17	0.45
1:E:72:ARG:HH12	1:E:81:ILE:HD12	1.81	0.44
1:F:311:HIS:O	1:F:315:GLY:CA	2.65	0.44
1:E:242:MET:HE1	1:E:337:MET:HB3	1.99	0.44
1:F:274:ILE:O	1:F:275:ILE:HG13	2.18	0.44
1:E:260:HIS:HB3	1:E:271:GLU:HB2	1.99	0.44
1:F:73:PHE:CD2	1:F:79:PRO:HA	2.53	0.44
1:E:200:HIS:HA	1:E:203:PHE:CZ	2.53	0.44
1:F:41:GLY:HA3	1:E:41:GLY:HA3	1.99	0.43
1:F:120:LEU:O	1:F:123:LEU:HB3	2.17	0.43
1:F:83:THR:HG22	1:F:86:ASN:O	2.18	0.43
1:E:270:LEU:HD13	1:E:321:TYR:OH	2.18	0.43
1:F:77:GLU:O	1:F:79:PRO:HD3	2.17	0.43
1:F:243:LEU:O	1:F:335:ILE:HA	2.18	0.43
1:F:61:LEU:HD13	1:F:238:LEU:CD1	2.49	0.43
1:E:278:ASN:HD21	1:E:279:ARG:HH12	1.66	0.43
1:E:73:PHE:CD2	1:E:79:PRO:HA	2.54	0.43
1:E:91:ASN:HD22	1:E:243:LEU:CD2	2.32	0.43
1:E:92:ILE:H	1:E:92:ILE:CD1	2.30	0.43
1:E:52:LEU:HA	1:E:253:LEU:O	2.19	0.42
1:E:288:GLY:O	1:E:292:MET:HG2	2.18	0.42
1:E:301:TYR:O	1:E:306:SER:OG	2.22	0.42
1:F:273:GLY:H	2:F:401:ARG:HH22	1.67	0.42
1:F:87:PRO:O	1:F:91:ASN:OD1	2.37	0.42

Continued on next page...

Continued from previous page...

Atom-1	Atom-2	Interatomic distance (Å)	Clash overlap (Å)
1:F:142:MET:SD	1:F:142:MET:N	2.82	0.42
1:E:53:LEU:HD12	1:E:255:ASP:HA	2.02	0.42
1:E:64:GLN:HB3	1:E:237:TYR:HE1	1.84	0.42
1:F:244:LEU:HD23	1:F:335:ILE:HG12	2.02	0.42
1:F:273:GLY:CA	2:F:401:ARG:HH22	2.33	0.42
1:F:42:HIS:HA	1:F:52:LEU:HG	2.02	0.42
1:E:56:ASN:HA	1:E:250:THR:HG23	2.02	0.42
1:E:60:PRO:HA	1:E:103:ILE:O	2.20	0.41
1:F:88:TYR:CZ	1:F:241:ASP:HB3	2.55	0.41
1:E:62:VAL:HB	1:E:237:TYR:HA	2.01	0.41
1:F:52:LEU:HA	1:F:253:LEU:O	2.20	0.41
1:F:274:ILE:HG21	1:F:330:PHE:CD2	2.55	0.41
1:F:193:SER:OG	1:F:194:HIS:N	2.53	0.41
1:F:288:GLY:O	1:F:292:MET:HG2	2.20	0.41
1:E:72:ARG:NH1	1:E:81:ILE:HD12	2.35	0.41
1:E:83:THR:CG2	1:E:86:ASN:ND2	2.76	0.41
1:F:158:LEU:HD13	1:F:171:LEU:HA	2.02	0.41
1:F:60:PRO:HA	1:F:103:ILE:O	2.21	0.41
1:E:209:LEU:O	1:E:212:LEU:HB2	2.20	0.41
1:F:53:LEU:HD12	1:F:255:ASP:HA	2.02	0.41
1:E:66:PHE:CD2	1:E:203:PHE:HB3	2.56	0.41
1:F:56:ASN:HA	1:F:250:THR:HG23	2.03	0.40
1:E:193:SER:O	1:E:195:ASN:N	2.53	0.40
1:F:63:PHE:CG	1:F:92:ILE:HG12	2.56	0.40
1:E:42:HIS:HA	1:E:52:LEU:HG	2.03	0.40
1:E:299:ASP:N	1:E:303:ASP:OD2	2.54	0.40
1:F:66:PHE:CD2	1:F:203:PHE:HB3	2.56	0.40
1:E:82:ASN:HD21	1:E:89:LEU:HB2	1.77	0.40

All (2) symmetry-related close contacts are listed below. The label for Atom-2 includes the symmetry operator and encoded unit-cell translations to be applied.

Atom-1	Atom-2	Interatomic distance (Å)	Clash overlap (Å)
1:F:166:ARG:NH1	1:F:265:ASP:OD1[1_455]	1.92	0.28
1:F:166:ARG:NH2	1:F:265:ASP:OD1[1_455]	2.17	0.03

5.3 Torsion angles [i](#)

5.3.1 Protein backbone [i](#)

In the following table, the Percentiles column shows the percent Ramachandran outliers of the chain as a percentile score with respect to all X-ray entries followed by that with respect to entries of similar resolution.

The Analysed column shows the number of residues for which the backbone conformation was analysed, and the total number of residues.

Mol	Chain	Analysed	Favoured	Allowed	Outliers	Percentiles	
1	E	301/348 (86%)	283 (94%)	18 (6%)	0	100	100
1	F	301/348 (86%)	282 (94%)	19 (6%)	0	100	100
All	All	602/696 (86%)	565 (94%)	37 (6%)	0	100	100

There are no Ramachandran outliers to report.

5.3.2 Protein sidechains [i](#)

In the following table, the Percentiles column shows the percent sidechain outliers of the chain as a percentile score with respect to all X-ray entries followed by that with respect to entries of similar resolution.

The Analysed column shows the number of residues for which the sidechain conformation was analysed, and the total number of residues.

Mol	Chain	Analysed	Rotameric	Outliers	Percentiles	
1	E	268/307 (87%)	262 (98%)	6 (2%)	52	83
1	F	268/307 (87%)	263 (98%)	5 (2%)	57	85
All	All	536/614 (87%)	525 (98%)	11 (2%)	55	84

All (11) residues with a non-rotameric sidechain are listed below:

Mol	Chain	Res	Type
1	F	91	ASN
1	F	165	GLU
1	F	177	SER
1	F	299	ASP
1	F	332	HIS
1	E	81	ILE
1	E	86	ASN
1	E	187	GLU

Continued on next page...

Continued from previous page...

Mol	Chain	Res	Type
1	E	267	HIS
1	E	299	ASP
1	E	332	HIS

Sometimes sidechains can be flipped to improve hydrogen bonding and reduce clashes. All (1) such sidechains are listed below:

Mol	Chain	Res	Type
1	E	86	ASN

5.3.3 RNA [i](#)

There are no RNA molecules in this entry.

5.4 Non-standard residues in protein, DNA, RNA chains [i](#)

There are no non-standard protein/DNA/RNA residues in this entry.

5.5 Carbohydrates [i](#)

There are no monosaccharides in this entry.

5.6 Ligand geometry [i](#)

Of 6 ligands modelled in this entry, 2 are monoatomic - leaving 4 for Mogul analysis.

In the following table, the Counts columns list the number of bonds (or angles) for which Mogul statistics could be retrieved, the number of bonds (or angles) that are observed in the model and the number of bonds (or angles) that are defined in the Chemical Component Dictionary. The Link column lists molecule types, if any, to which the group is linked. The Z score for a bond length (or angle) is the number of standard deviations the observed value is removed from the expected value. A bond length (or angle) with $|Z| > 2$ is considered an outlier worth inspection. RMSZ is the root-mean-square of all Z scores of the bond lengths (or angles).

Mol	Type	Chain	Res	Link	Bond lengths			Bond angles		
					Counts	RMSZ	$\# Z > 2$	Counts	RMSZ	$\# Z > 2$
4	UDP	E	403	3	24,26,26	1.17	4 (16%)	37,40,40	1.72	6 (16%)
4	UDP	F	403	3	24,26,26	1.24	4 (16%)	37,40,40	1.72	5 (13%)
2	ARG	F	401	-	10,11,11	0.79	0	11,13,13	1.21	1 (9%)
2	ARG	E	401	-	10,11,11	0.73	0	11,13,13	1.29	2 (18%)

In the following table, the Chirals column lists the number of chiral outliers, the number of chiral centers analysed, the number of these observed in the model and the number defined in the Chemical Component Dictionary. Similar counts are reported in the Torsion and Rings columns. '-' means no outliers of that kind were identified.

Mol	Type	Chain	Res	Link	Chirals	Torsions	Rings
4	UDP	E	403	3	-	6/16/32/32	0/2/2/2
4	UDP	F	403	3	-	5/16/32/32	0/2/2/2
2	ARG	F	401	-	-	6/11/11/11	-
2	ARG	E	401	-	-	6/11/11/11	-

All (8) bond length outliers are listed below:

Mol	Chain	Res	Type	Atoms	Z	Observed(Å)	Ideal(Å)
4	F	403	UDP	C2-N1	2.65	1.42	1.38
4	F	403	UDP	C4-N3	-2.50	1.34	1.38
4	E	403	UDP	C2-N1	2.46	1.42	1.38
4	F	403	UDP	C2-N3	-2.30	1.33	1.38
4	E	403	UDP	C4-N3	-2.30	1.34	1.38
4	F	403	UDP	C5-C4	-2.13	1.38	1.43
4	E	403	UDP	C2-N3	-2.08	1.34	1.38
4	E	403	UDP	C5-C4	-2.03	1.39	1.43

All (14) bond angle outliers are listed below:

Mol	Chain	Res	Type	Atoms	Z	Observed(°)	Ideal(°)
4	F	403	UDP	C4-N3-C2	-4.95	120.05	126.58
4	E	403	UDP	C4-N3-C2	-4.95	120.06	126.58
4	F	403	UDP	C5-C4-N3	4.81	122.03	114.84
4	E	403	UDP	C5-C4-N3	4.66	121.81	114.84
4	F	403	UDP	O4-C4-C5	-3.95	118.22	125.16
4	E	403	UDP	O4-C4-C5	-3.91	118.29	125.16
4	E	403	UDP	N3-C2-N1	3.57	119.63	114.89
4	F	403	UDP	N3-C2-N1	3.48	119.52	114.89
2	E	401	ARG	OXT-C-CA	2.80	122.93	113.38
2	E	401	ARG	OXT-C-O	-2.64	118.09	124.09
2	F	401	ARG	OXT-C-O	-2.45	118.53	124.09
4	E	403	UDP	O3A-PB-O1B	-2.38	97.99	111.19
4	E	403	UDP	PA-O3A-PB	-2.30	124.93	132.83
4	F	403	UDP	PA-O3A-PB	-2.11	125.59	132.83

There are no chirality outliers.

All (23) torsion outliers are listed below:

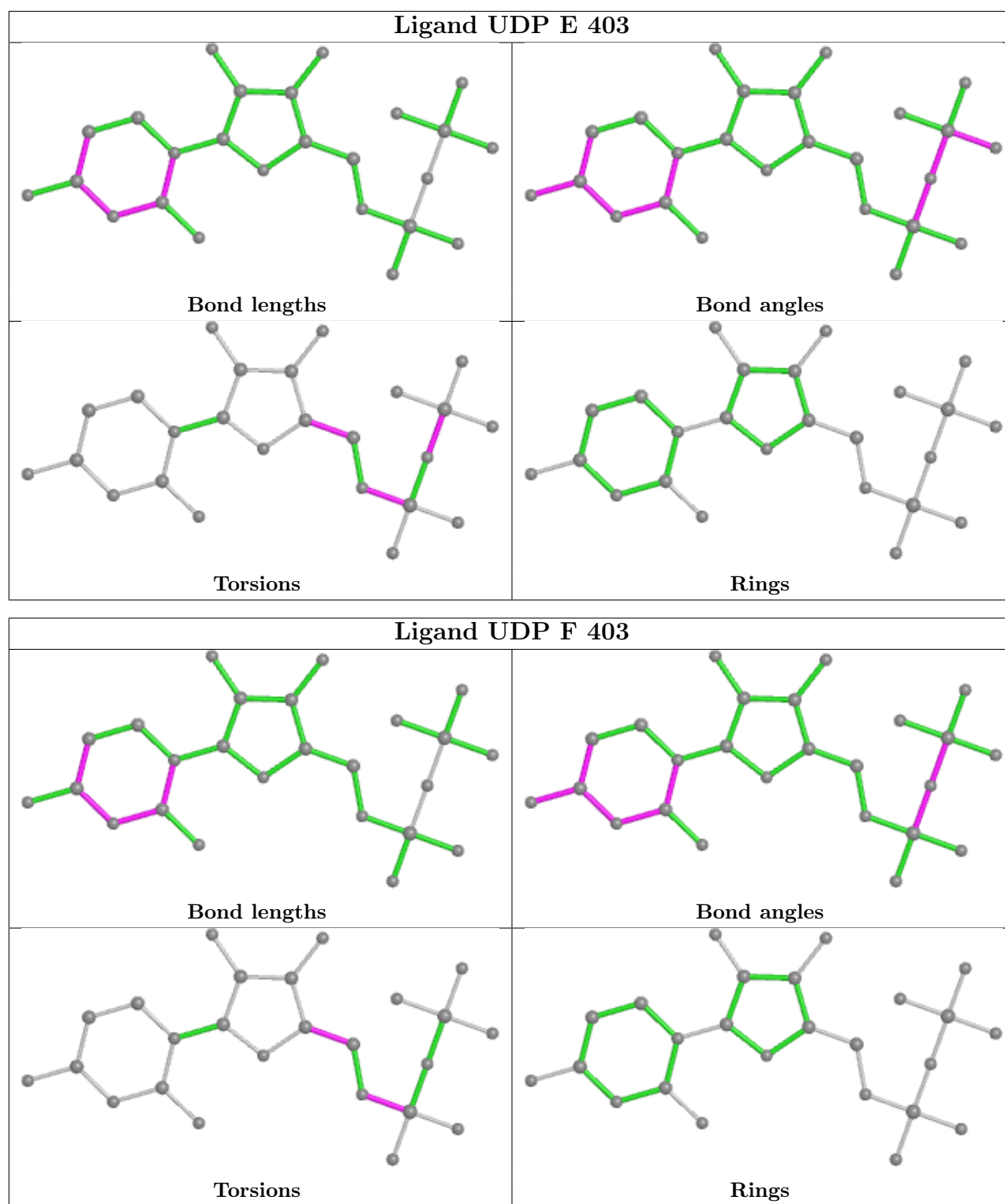
Mol	Chain	Res	Type	Atoms
2	F	401	ARG	O-C-CA-N
2	E	401	ARG	C-CA-CB-CG
4	F	403	UDP	C5'-O5'-PA-O1A
4	E	403	UDP	C5'-O5'-PA-O1A
4	E	403	UDP	C5'-O5'-PA-O2A
2	F	401	ARG	OXT-C-CA-N
2	E	401	ARG	OXT-C-CA-CB
4	E	403	UDP	O4'-C4'-C5'-O5'
2	E	401	ARG	O-C-CA-CB
2	E	401	ARG	OXT-C-CA-N
4	F	403	UDP	O4'-C4'-C5'-O5'
2	E	401	ARG	O-C-CA-N
2	F	401	ARG	C-CA-CB-CG
4	F	403	UDP	C5'-O5'-PA-O3A
4	F	403	UDP	C5'-O5'-PA-O2A
4	E	403	UDP	PA-O3A-PB-O1B
4	E	403	UDP	C3'-C4'-C5'-O5'
2	F	401	ARG	O-C-CA-CB
2	F	401	ARG	OXT-C-CA-CB
4	F	403	UDP	C3'-C4'-C5'-O5'
2	F	401	ARG	CA-CB-CG-CD
2	E	401	ARG	CA-CB-CG-CD
4	E	403	UDP	C5'-O5'-PA-O3A

There are no ring outliers.

2 monomers are involved in 8 short contacts:

Mol	Chain	Res	Type	Clashes	Symm-Clashes
2	F	401	ARG	6	0
2	E	401	ARG	2	0

The following is a two-dimensional graphical depiction of Mogul quality analysis of bond lengths, bond angles, torsion angles, and ring geometry for all instances of the Ligand of Interest. In addition, ligands with molecular weight > 250 and outliers as shown on the validation Tables will also be included. For torsion angles, if less than 5% of the Mogul distribution of torsion angles is within 10 degrees of the torsion angle in question, then that torsion angle is considered an outlier. Any bond that is central to one or more torsion angles identified as an outlier by Mogul will be highlighted in the graph. For rings, the root-mean-square deviation (RMSD) between the ring in question and similar rings identified by Mogul is calculated over all ring torsion angles. If the average RMSD is greater than 60 degrees and the minimal RMSD between the ring in question and any Mogul-identified rings is also greater than 60 degrees, then that ring is considered an outlier. The outliers are highlighted in purple. The color gray indicates Mogul did not find sufficient equivalents in the CSD to analyse the geometry.



5.7 Other polymers [i](#)

There are no such residues in this entry.

5.8 Polymer linkage issues

There are no chain breaks in this entry.

6 Fit of model and data

6.1 Protein, DNA and RNA chains

Unable to reproduce the depositors R factor - this section is therefore empty.

6.2 Non-standard residues in protein, DNA, RNA chains

Unable to reproduce the depositors R factor - this section is therefore empty.

6.3 Carbohydrates

Unable to reproduce the depositors R factor - this section is therefore empty.

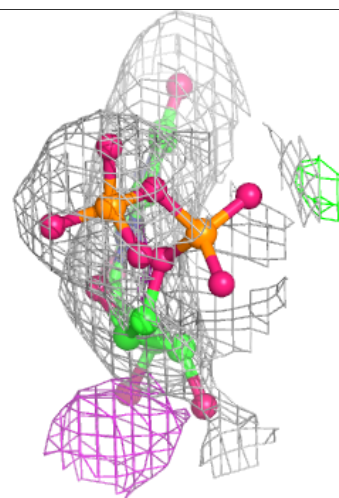
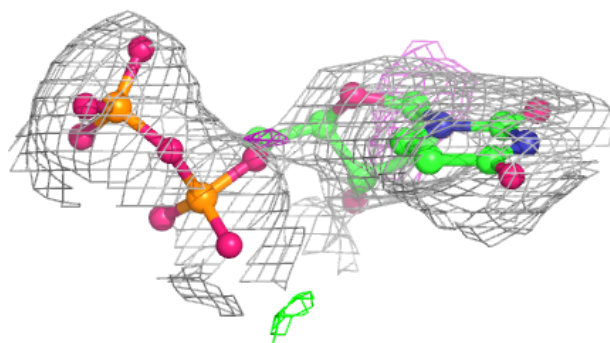
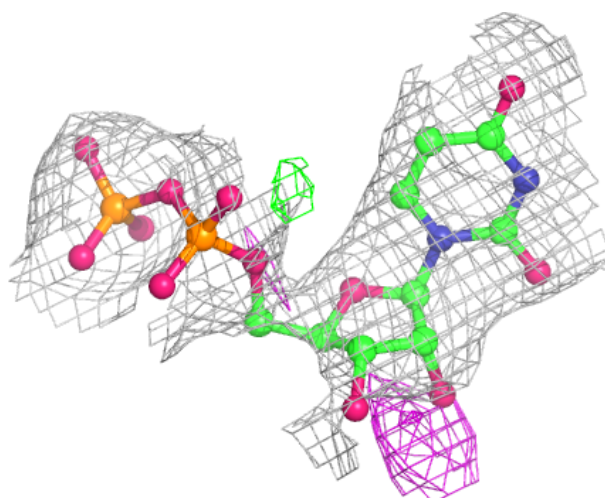
6.4 Ligands

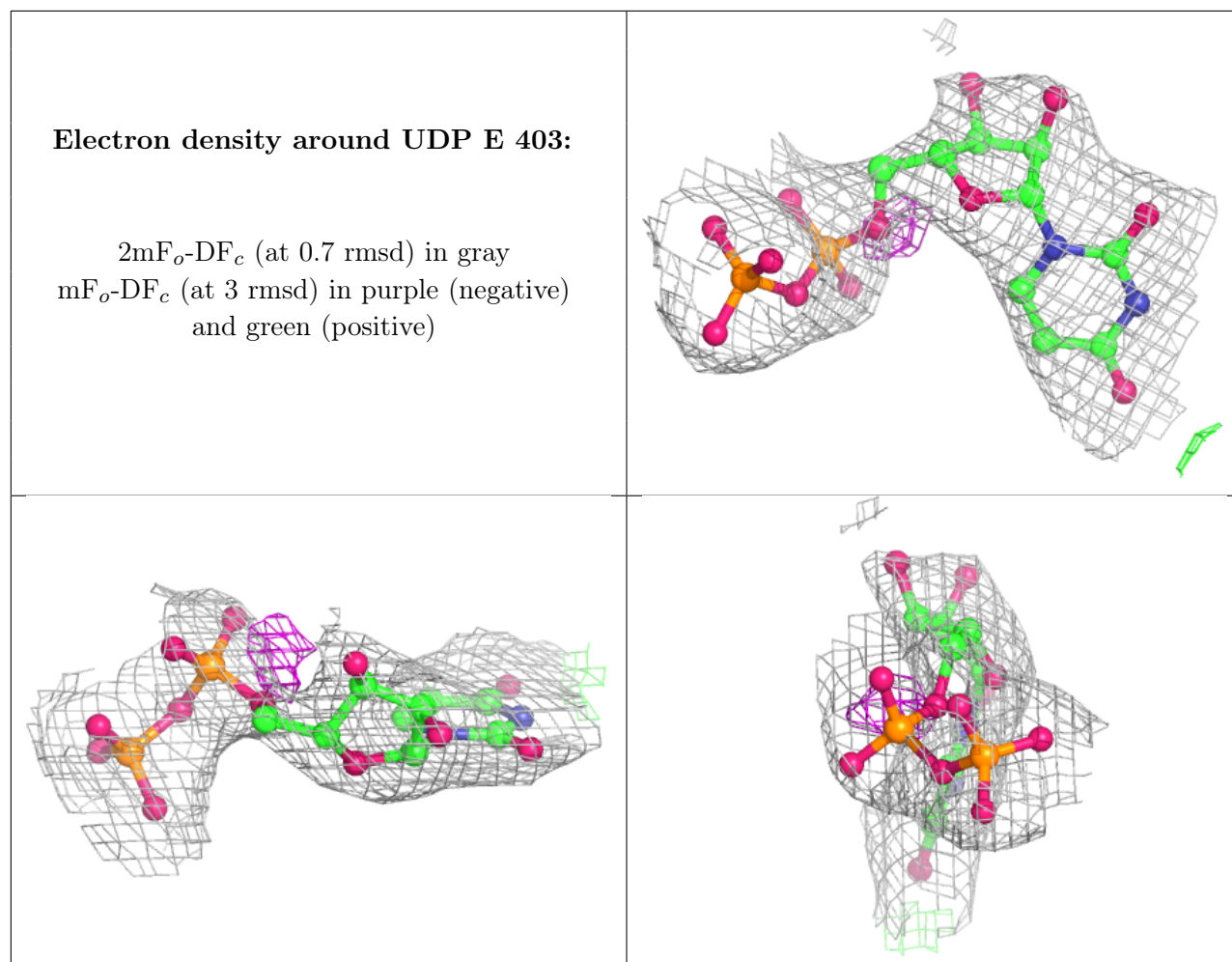
Unable to reproduce the depositors R factor - this section is therefore empty.

The following is a graphical depiction of the model fit to experimental electron density of all instances of the Ligand of Interest. In addition, ligands with molecular weight > 250 and outliers as shown on the geometry validation Tables will also be included. Each fit is shown from different orientation to approximate a three-dimensional view.

Electron density around UDP F 403:

$2mF_o-DF_c$ (at 0.7 rmsd) in gray
 mF_o-DF_c (at 3 rmsd) in purple (negative)
and green (positive)





6.5 Other polymers [i](#)

Unable to reproduce the depositors R factor - this section is therefore empty.