



# Full wwPDB X-ray Structure Validation Report ⓘ

Dec 13, 2023 – 06:44 am GMT

PDB ID : 2XIL  
Title : The structure of cytochrome c peroxidase Compound I  
Authors : Gumiero, A.; Raven, E.L.; Moody, P.C.E.  
Deposited on : 2010-06-30  
Resolution : 1.68 Å(reported)

This is a Full wwPDB X-ray Structure Validation Report for a publicly released PDB entry.

We welcome your comments at [validation@mail.wwpdb.org](mailto:validation@mail.wwpdb.org)

A user guide is available at

<https://www.wwpdb.org/validation/2017/XrayValidationReportHelp>

with specific help available everywhere you see the ⓘ symbol.

The types of validation reports are described at

<http://www.wwpdb.org/validation/2017/FAQs#types>.

---

The following versions of software and data (see [references ⓘ](#)) were used in the production of this report:

MolProbity : 4.02b-467  
Mogul : 1.8.4, CSD as541be (2020)  
Xtriage (Phenix) : 1.13  
EDS : 2.36  
buster-report : 1.1.7 (2018)  
Percentile statistics : 20191225.v01 (using entries in the PDB archive December 25th 2019)  
Refmac : 5.8.0158  
CCP4 : 7.0.044 (Gargrove)  
Ideal geometry (proteins) : Engh & Huber (2001)  
Ideal geometry (DNA, RNA) : Parkinson et al. (1996)  
Validation Pipeline (wwPDB-VP) : 2.36

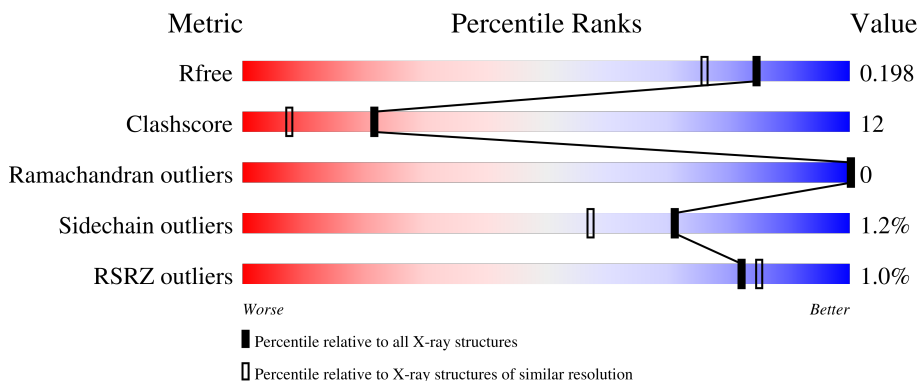
# 1 Overall quality at a glance

The following experimental techniques were used to determine the structure:

*X-RAY DIFFRACTION*

The reported resolution of this entry is 1.68 Å.

Percentile scores (ranging between 0-100) for global validation metrics of the entry are shown in the following graphic. The table shows the number of entries on which the scores are based.



Metric	Whole archive (#Entries)	Similar resolution (#Entries, resolution range(Å))
$R_{free}$	130704	6780 (1.70-1.66)
Clashscore	141614	7310 (1.70-1.66)
Ramachandran outliers	138981	7173 (1.70-1.66)
Sidechain outliers	138945	7172 (1.70-1.66)
RSRZ outliers	127900	6661 (1.70-1.66)

The table below summarises the geometric issues observed across the polymeric chains and their fit to the electron density. The red, orange, yellow and green segments of the lower bar indicate the fraction of residues that contain outliers for  $\geq 3$ , 2, 1 and 0 types of geometric quality criteria respectively. A grey segment represents the fraction of residues that are not modelled. The numeric value for each fraction is indicated below the corresponding segment, with a dot representing fractions  $\leq 5\%$ . The upper red bar (where present) indicates the fraction of residues that have poor fit to the electron density. The numeric value is given above the bar.

Mol	Chain	Length	Quality of chain
1	A	294	

The following table lists non-polymeric compounds, carbohydrate monomers and non-standard residues in protein, DNA, RNA chains that are outliers for geometric or electron-density-fit criteria:

Mol	Type	Chain	Res	Chirality	Geometry	Clashes	Electron density
2	MPD	A	1295	-	-	X	-

*Continued on next page...*

*Continued from previous page...*

Mol	Type	Chain	Res	Chirality	Geometry	Clashes	Electron density
2	MPD	A	1300	-	-	-	X

## 2 Entry composition i

There are 6 unique types of molecules in this entry. The entry contains 3207 atoms, of which 0 are hydrogens and 0 are deuteriums.

In the tables below, the ZeroOcc column contains the number of atoms modelled with zero occupancy, the AltConf column contains the number of residues with at least one atom in alternate conformation and the Trace column contains the number of residues modelled with at most 2 atoms.

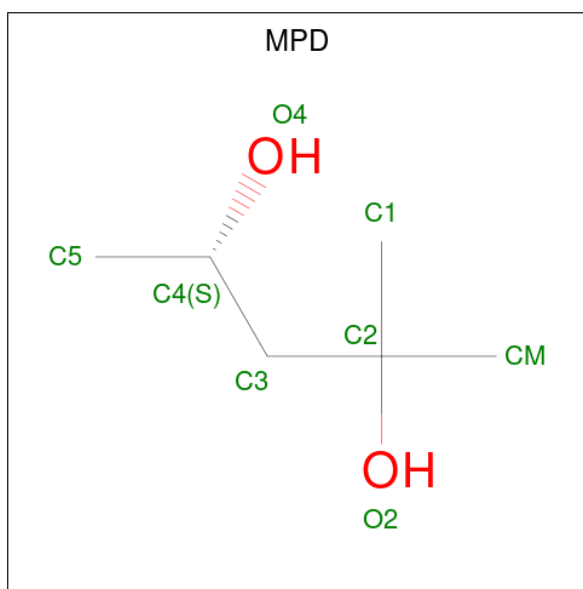
- Molecule 1 is a protein called CYTOCHROME C PEROXIDASE, MITOCHONDRIAL.

Mol	Chain	Residues	Atoms					ZeroOcc	AltConf	Trace
			Total	C	N	O	S			
1	A	293	2427	1551	406	464	6	0	7	0

There are 4 discrepancies between the modelled and reference sequences:

Chain	Residue	Modelled	Actual	Comment	Reference
A	1	MET	-	expression tag	UNP P00431
A	2	LYS	-	expression tag	UNP P00431
A	3	THR	-	expression tag	UNP P00431
A	210	ASN	ASP	conflict	UNP P00431

- Molecule 2 is (4S)-2-METHYL-2,4-PENTANEDIOL (three-letter code: MPD) (formula: C<sub>6</sub>H<sub>14</sub>O<sub>2</sub>).



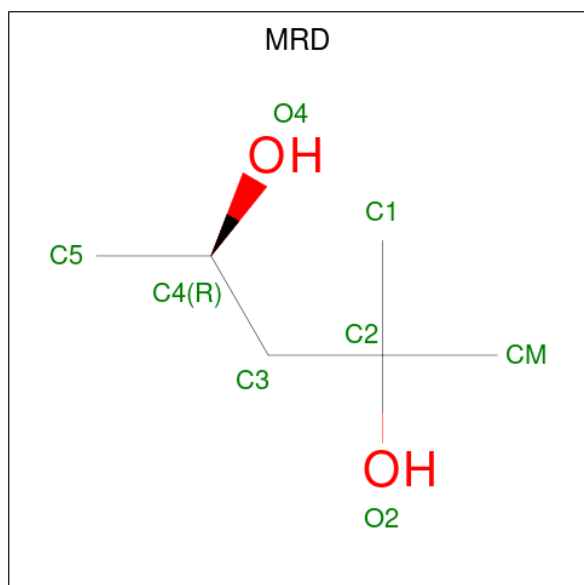
Mol	Chain	Residues	Atoms			ZeroOcc	AltConf
			Total	C	O		
2	A	1	8	6	2	0	0

*Continued on next page...*

Continued from previous page...

Mol	Chain	Residues	Atoms			ZeroOcc	AltConf
2	A	1	Total	C	O	0	0
			8	6	2		
2	A	1	Total	C	O	0	0
			8	6	2		

- Molecule 3 is (4R)-2-METHYLPENTANE-2,4-DIOL (three-letter code: MRD) (formula:  $C_6H_{14}O_2$ ).



Mol	Chain	Residues	Atoms			ZeroOcc	AltConf
3	A	1	Total	C	O	0	0
			8	6	2		
3	A	1	Total	C	O	0	0
			8	6	2		
3	A	1	Total	C	O	0	0
			8	6	2		

- Molecule 4 is PROTOPORPHYRIN IX CONTAINING FE (three-letter code: HEM) (formula:  $C_{34}H_{32}FeN_4O_4$ ).



Mol	Chain	Residues	Atoms		ZeroOcc	AltConf
6	A	684	Total 684	O 684	0	0





## 4 Data and refinement statistics

Property	Value	Source
Space group	P 21 21 21	Depositor
Cell constants a, b, c, $\alpha$ , $\beta$ , $\gamma$	51.04Å 75.04Å 106.80Å 90.00° 90.00° 90.00°	Depositor
Resolution (Å)	33.11 – 1.68 33.11 – 1.68	Depositor EDS
% Data completeness (in resolution range)	91.2 (33.11-1.68) 91.2 (33.11-1.68)	Depositor EDS
$R_{merge}$	0.07	Depositor
$R_{sym}$	(Not available)	Depositor
$\langle I/\sigma(I) \rangle$ <sup>1</sup>	2.60 (at 1.69Å)	Xtrriage
Refinement program	REFMAC 5.5.0109	Depositor
R, $R_{free}$	0.153 , 0.199 0.150 , 0.198	Depositor DCC
$R_{free}$ test set	2186 reflections (5.07%)	wwPDB-VP
Wilson B-factor (Å <sup>2</sup> )	14.3	Xtrriage
Anisotropy	0.052	Xtrriage
Bulk solvent $k_{sol}$ (e/Å <sup>3</sup> ), $B_{sol}$ (Å <sup>2</sup> )	0.30 , 92.9	EDS
L-test for twinning <sup>2</sup>	$\langle  L  \rangle = 0.49$ , $\langle L^2 \rangle = 0.32$	Xtrriage
Estimated twinning fraction	No twinning to report.	Xtrriage
$F_o, F_c$ correlation	0.97	EDS
Total number of atoms	3207	wwPDB-VP
Average B, all atoms (Å <sup>2</sup> )	22.0	wwPDB-VP

Xtrriage's analysis on translational NCS is as follows: *The largest off-origin peak in the Patterson function is 4.80% of the height of the origin peak. No significant pseudotranslation is detected.*

<sup>1</sup>Intensities estimated from amplitudes.

<sup>2</sup>Theoretical values of  $\langle |L| \rangle$ ,  $\langle L^2 \rangle$  for acentric reflections are 0.5, 0.333 respectively for untwinned datasets, and 0.375, 0.2 for perfectly twinned datasets.

## 5 Model quality [i](#)

### 5.1 Standard geometry [i](#)

Bond lengths and bond angles in the following residue types are not validated in this section: MRD, PO4, HEM, MPD

The Z score for a bond length (or angle) is the number of standard deviations the observed value is removed from the expected value. A bond length (or angle) with  $|Z| > 5$  is considered an outlier worth inspection. RMSZ is the root-mean-square of all Z scores of the bond lengths (or angles).

Mol	Chain	Bond lengths		Bond angles	
		RMSZ	# Z  >5	RMSZ	# Z  >5
1	A	0.49	0/2500	1.14	11/3379 (0.3%)

There are no bond length outliers.

All (11) bond angle outliers are listed below:

Mol	Chain	Res	Type	Atoms	Z	Observed(°)	Ideal(°)
1	A	160	ARG	NE-CZ-NH2	-9.83	115.39	120.30
1	A	23	TYR	CG-CD2-CE2	8.47	128.08	121.30
1	A	23	TYR	CB-CG-CD2	7.81	125.69	121.00
1	A	91	PHE	CB-CG-CD1	7.41	125.98	120.80
1	A	36	TYR	CB-CG-CD1	-6.93	116.84	121.00
1	A	34	ASP	CB-CG-OD1	6.62	124.25	118.30
1	A	17	GLU	CB-CG-CD	6.17	130.85	114.20
1	A	160	ARG	NE-CZ-NH1	6.15	123.37	120.30
1	A	48	ARG	NE-CZ-NH1	5.99	123.29	120.30
1	A	157	PHE	CB-CG-CD1	-5.96	116.63	120.80
1	A	23	TYR	CZ-CE2-CD2	-5.70	114.67	119.80

There are no chirality outliers.

There are no planarity outliers.

### 5.2 Too-close contacts [i](#)

In the following table, the Non-H and H(model) columns list the number of non-hydrogen atoms and hydrogen atoms in the chain respectively. The H(added) column lists the number of hydrogen atoms added and optimized by MolProbity. The Clashes column lists the number of clashes within the asymmetric unit, whereas Symm-Clashes lists symmetry-related clashes.

Mol	Chain	Non-H	H(model)	H(added)	Clashes	Symm-Clashes
1	A	2427	0	2315	46	0
2	A	24	0	42	11	0
3	A	24	0	42	7	0
4	A	43	0	30	0	0
5	A	5	0	0	0	0
6	A	684	0	0	30	0
All	All	3207	0	2429	59	0

The all-atom clashscore is defined as the number of clashes found per 1000 atoms (including hydrogen atoms). The all-atom clashscore for this structure is 12.

All (59) close contacts within the same asymmetric unit are listed below, sorted by their clash magnitude.

Atom-1	Atom-2	Interatomic distance (Å)	Clash overlap (Å)
2:A:1300:MPD:H11	6:A:2679:HOH:O	1.61	1.00
1:A:20:GLN:HE22	1:A:287[A]:LYS:H	1.21	0.85
1:A:20:GLN:HE22	1:A:287[B]:LYS:H	1.26	0.80
1:A:188:GLU:H	1:A:222:GLN:HE22	1.32	0.76
3:A:1298:MRD:O2	3:A:1298:MRD:H5C3	1.85	0.76
1:A:278:LYS:HB2	6:A:2643:HOH:O	1.87	0.73
1:A:17:GLU:HG2	6:A:2102:HOH:O	1.94	0.67
1:A:90[B]:LYS:HD2	6:A:2334:HOH:O	1.96	0.65
1:A:2:LYS:HA	6:A:2004:HOH:O	1.96	0.65
1:A:264:LYS:HE2	6:A:2618:HOH:O	1.97	0.64
1:A:74:LYS:HD3	6:A:2134:HOH:O	1.99	0.62
1:A:226[A]:LYS:HD3	6:A:2565:HOH:O	1.99	0.61
1:A:287[A]:LYS:HD2	6:A:2655:HOH:O	1.99	0.61
1:A:216:ASN:HD22	1:A:222:GLN:HE21	1.47	0.61
1:A:243:LYS:HE2	6:A:2242:HOH:O	2.01	0.61
1:A:20:GLN:HE22	1:A:287[A]:LYS:N	1.98	0.60
1:A:264:LYS:HD3	6:A:2619:HOH:O	2.02	0.60
1:A:90[B]:LYS:N	1:A:90[B]:LYS:HD3	2.15	0.59
1:A:212:LYS:HD2	1:A:226[A]:LYS:NZ	2.18	0.58
1:A:17:GLU:HG3	1:A:18:ASP:N	2.18	0.58
1:A:212:LYS:HD2	1:A:226[A]:LYS:HZ2	1.69	0.57
3:A:1299:MRD:H5C2	6:A:2628:HOH:O	2.04	0.57
1:A:6:HIS:HE1	6:A:2255:HOH:O	1.87	0.57
1:A:2:LYS:HG3	6:A:2001:HOH:O	2.03	0.57
1:A:216:ASN:HD22	1:A:222:GLN:NE2	2.03	0.57
1:A:204:LEU:HD21	6:A:2596:HOH:O	2.04	0.57
3:A:1298:MRD:H1C3	3:A:1298:MRD:H5C2	1.87	0.57
1:A:6:HIS:HD2	6:A:2027:HOH:O	1.86	0.56

*Continued on next page...*

Continued from previous page...

Atom-1	Atom-2	Interatomic distance (Å)	Clash overlap (Å)
1:A:90[A]:LYS:HE3	6:A:2202:HOH:O	2.06	0.55
1:A:260:LYS:HE2	2:A:1295:MPD:HM3	1.89	0.54
1:A:260:LYS:NZ	2:A:1295:MPD:H11	2.23	0.54
2:A:1300:MPD:C1	6:A:2679:HOH:O	2.38	0.52
3:A:1299:MRD:C5	6:A:2628:HOH:O	2.57	0.52
2:A:1297:MPD:H51	6:A:2564:HOH:O	2.09	0.52
1:A:3:THR:HA	6:A:2009:HOH:O	2.10	0.51
1:A:287[B]:LYS:HD3	6:A:2656:HOH:O	2.11	0.51
3:A:1299:MRD:H5C3	6:A:2348:HOH:O	2.11	0.50
2:A:1300:MPD:HM3	2:A:1300:MPD:H53	1.95	0.48
1:A:17:GLU:HG3	1:A:18:ASP:H	1.77	0.48
3:A:1296:MRD:H4	3:A:1296:MRD:H1C3	1.43	0.48
3:A:1299:MRD:H3C2	6:A:2348:HOH:O	2.13	0.48
1:A:2:LYS:O	1:A:3:THR:OG1	2.26	0.47
1:A:256:ASP:OD2	2:A:1295:MPD:HM3	2.14	0.47
1:A:260:LYS:HE2	2:A:1295:MPD:CM	2.47	0.45
1:A:123[A]:LYS:HE3	6:A:2392:HOH:O	2.17	0.44
1:A:260:LYS:NZ	6:A:2611:HOH:O	2.50	0.44
1:A:212:LYS:NZ	6:A:2542:HOH:O	2.50	0.44
1:A:3:THR:HB	1:A:4:LEU:H	1.63	0.43
1:A:90[B]:LYS:NZ	6:A:2334:HOH:O	2.51	0.43
1:A:86:GLN:O	1:A:90[B]:LYS:HE2	2.19	0.43
1:A:57:TRP:CD2	1:A:272:ASN:HB3	2.54	0.42
1:A:89:PHE:O	1:A:93:GLU:HG3	2.19	0.42
1:A:260:LYS:HZ3	2:A:1295:MPD:H11	1.83	0.42
1:A:99:PHE:O	1:A:102:ILE:HG22	2.20	0.41
1:A:224:ASP:HB3	6:A:2674:HOH:O	2.21	0.41
2:A:1295:MPD:HM3	2:A:1295:MPD:H4	1.44	0.41
1:A:20:GLN:NE2	1:A:287[A]:LYS:H	2.02	0.40
1:A:143:ARG:HH21	1:A:143:ARG:HD3	1.71	0.40
2:A:1297:MPD:C1	6:A:2498:HOH:O	2.68	0.40

There are no symmetry-related clashes.

## 5.3 Torsion angles

### 5.3.1 Protein backbone

In the following table, the Percentiles column shows the percent Ramachandran outliers of the chain as a percentile score with respect to all X-ray entries followed by that with respect to entries of similar resolution.

The Analysed column shows the number of residues for which the backbone conformation was analysed, and the total number of residues.

Mol	Chain	Analysed	Favoured	Allowed	Outliers	Percentiles	
1	A	298/294 (101%)	293 (98%)	5 (2%)	0	100	100

There are no Ramachandran outliers to report.

### 5.3.2 Protein sidechains [i](#)

In the following table, the Percentiles column shows the percent sidechain outliers of the chain as a percentile score with respect to all X-ray entries followed by that with respect to entries of similar resolution.

The Analysed column shows the number of residues for which the sidechain conformation was analysed, and the total number of residues.

Mol	Chain	Analysed	Rotameric	Outliers	Percentiles	
1	A	259/253 (102%)	255 (98%)	4 (2%)	65	48

All (4) residues with a non-rotameric sidechain are listed below:

Mol	Chain	Res	Type
1	A	51	TRP
1	A	226[A]	LYS
1	A	226[B]	LYS
1	A	278	LYS

Sometimes sidechains can be flipped to improve hydrogen bonding and reduce clashes. All (7) such sidechains are listed below:

Mol	Chain	Res	Type
1	A	6	HIS
1	A	20	GLN
1	A	24	ASN
1	A	159	GLN
1	A	208	ASN
1	A	222	GLN
1	A	292	GLN

### 5.3.3 RNA [i](#)

There are no RNA molecules in this entry.

## 5.4 Non-standard residues in protein, DNA, RNA chains [i](#)

There are no non-standard protein/DNA/RNA residues in this entry.

## 5.5 Carbohydrates [i](#)

There are no monosaccharides in this entry.

## 5.6 Ligand geometry [i](#)

8 ligands are modelled in this entry.

In the following table, the Counts columns list the number of bonds (or angles) for which Mogul statistics could be retrieved, the number of bonds (or angles) that are observed in the model and the number of bonds (or angles) that are defined in the Chemical Component Dictionary. The Link column lists molecule types, if any, to which the group is linked. The Z score for a bond length (or angle) is the number of standard deviations the observed value is removed from the expected value. A bond length (or angle) with  $|Z| > 2$  is considered an outlier worth inspection. RMSZ is the root-mean-square of all Z scores of the bond lengths (or angles).

Mol	Type	Chain	Res	Link	Bond lengths			Bond angles		
					Counts	RMSZ	# Z  > 2	Counts	RMSZ	# Z  > 2
3	MRD	A	1296	-	7,7,7	0.64	0	9,10,10	0.92	0
2	MPD	A	1295	-	7,7,7	0.68	0	9,10,10	1.10	1 (11%)
2	MPD	A	1300	-	7,7,7	0.41	0	9,10,10	0.85	0
3	MRD	A	1298	-	7,7,7	0.33	0	9,10,10	0.76	0
5	PO4	A	1302	-	4,4,4	1.62	0	6,6,6	0.44	0
4	HEM	A	1301	6,1	41,50,50	2.70	18 (43%)	45,82,82	3.10	26 (57%)
3	MRD	A	1299	-	7,7,7	0.53	0	9,10,10	1.50	1 (11%)
2	MPD	A	1297	-	7,7,7	0.56	0	9,10,10	1.04	0

In the following table, the Chirals column lists the number of chiral outliers, the number of chiral centers analysed, the number of these observed in the model and the number defined in the Chemical Component Dictionary. Similar counts are reported in the Torsion and Rings columns. '-' means no outliers of that kind were identified.

Mol	Type	Chain	Res	Link	Chirals	Torsions	Rings
3	MRD	A	1296	-	-	2/5/5/5	-
2	MPD	A	1295	-	-	3/5/5/5	-
2	MPD	A	1300	-	-	0/5/5/5	-
3	MRD	A	1298	-	-	4/5/5/5	-
4	HEM	A	1301	6,1	-	4/12/54/54	-

*Continued on next page...*

*Continued from previous page...*

Mol	Type	Chain	Res	Link	Chirals	Torsions	Rings
3	MRD	A	1299	-	-	0/5/5/5	-
2	MPD	A	1297	-	-	0/5/5/5	-

All (18) bond length outliers are listed below:

Mol	Chain	Res	Type	Atoms	Z	Observed(Å)	Ideal(Å)
4	A	1301	HEM	C4D-C3D	6.91	1.56	1.45
4	A	1301	HEM	C1A-CHA	-6.34	1.23	1.41
4	A	1301	HEM	O1A-CGA	5.64	1.40	1.22
4	A	1301	HEM	C3C-C2C	-4.84	1.33	1.40
4	A	1301	HEM	O2D-CGD	-4.10	1.16	1.30
4	A	1301	HEM	CHA-C4D	3.99	1.45	1.35
4	A	1301	HEM	CHB-C1B	3.42	1.43	1.35
4	A	1301	HEM	CBB-CAB	3.10	1.45	1.30
4	A	1301	HEM	CBA-CGA	3.03	1.57	1.50
4	A	1301	HEM	CHD-C1D	-2.93	1.32	1.41
4	A	1301	HEM	O1D-CGD	2.83	1.31	1.22
4	A	1301	HEM	CAB-C3B	2.58	1.54	1.47
4	A	1301	HEM	C1B-NB	-2.50	1.36	1.40
4	A	1301	HEM	C3C-CAC	2.33	1.52	1.47
4	A	1301	HEM	C1B-C2B	-2.32	1.40	1.44
4	A	1301	HEM	C4D-ND	-2.23	1.36	1.40
4	A	1301	HEM	CMB-C2B	2.15	1.55	1.50
4	A	1301	HEM	CMD-C2D	2.13	1.55	1.50

All (28) bond angle outliers are listed below:

Mol	Chain	Res	Type	Atoms	Z	Observed(°)	Ideal(°)
4	A	1301	HEM	CHD-C1D-ND	6.72	131.73	124.43
4	A	1301	HEM	C1B-NB-C4B	5.75	111.01	105.07
4	A	1301	HEM	C4B-C3B-C2B	5.70	111.64	107.11
4	A	1301	HEM	CAD-C3D-C2D	5.47	138.07	127.88
4	A	1301	HEM	CHD-C1D-C2D	-5.43	116.50	124.98
4	A	1301	HEM	CHB-C1B-NB	4.70	130.19	124.38
4	A	1301	HEM	CAD-C3D-C4D	-4.45	116.89	124.66
4	A	1301	HEM	O2A-CGA-CBA	4.40	128.17	114.03
4	A	1301	HEM	C4B-CHC-C1C	3.97	127.80	122.56
4	A	1301	HEM	O2A-CGA-O1A	-3.92	113.52	123.30
4	A	1301	HEM	CAA-CBA-CGA	-3.70	103.40	113.76
4	A	1301	HEM	C3D-C4D-ND	-3.62	106.14	110.17
4	A	1301	HEM	C4D-ND-C1D	3.61	108.81	105.07
4	A	1301	HEM	C3C-C4C-NC	-3.51	104.32	110.94

*Continued on next page...*

Continued from previous page...

Mol	Chain	Res	Type	Atoms	Z	Observed(°)	Ideal(°)
4	A	1301	HEM	CBA-CAA-C2A	-3.44	106.74	112.62
4	A	1301	HEM	CAA-C2A-C3A	3.40	137.03	127.25
4	A	1301	HEM	O1D-CGD-CBD	-3.40	112.16	123.08
3	A	1299	MRD	CM-C2-C1	-3.35	103.60	110.57
4	A	1301	HEM	CHB-C1B-C2B	-2.95	118.57	126.72
4	A	1301	HEM	CHC-C4B-C3B	2.83	128.91	124.57
4	A	1301	HEM	CHA-C4D-C3D	2.60	130.22	125.33
4	A	1301	HEM	C3B-C2B-C1B	-2.51	104.62	106.49
4	A	1301	HEM	C2C-C3C-C4C	-2.50	105.15	106.90
2	A	1295	MPD	CM-C2-C1	-2.48	105.41	110.57
4	A	1301	HEM	CAD-CBD-CGD	-2.46	108.31	113.60
4	A	1301	HEM	O2D-CGD-CBD	2.29	121.39	114.03
4	A	1301	HEM	CAB-C3B-C4B	-2.07	114.80	124.47
4	A	1301	HEM	CBD-CAD-C3D	-2.07	106.88	112.63

There are no chirality outliers.

All (13) torsion outliers are listed below:

Mol	Chain	Res	Type	Atoms
2	A	1295	MPD	CM-C2-C3-C4
3	A	1298	MRD	C2-C3-C4-O4
3	A	1298	MRD	C2-C3-C4-C5
2	A	1295	MPD	O2-C2-C3-C4
3	A	1298	MRD	CM-C2-C3-C4
4	A	1301	HEM	CAA-CBA-CGA-O2A
3	A	1298	MRD	O2-C2-C3-C4
4	A	1301	HEM	CAA-CBA-CGA-O1A
2	A	1295	MPD	C2-C3-C4-C5
3	A	1296	MRD	C2-C3-C4-C5
4	A	1301	HEM	CAD-CBD-CGD-O1D
3	A	1296	MRD	C2-C3-C4-O4
4	A	1301	HEM	CAD-CBD-CGD-O2D

There are no ring outliers.

6 monomers are involved in 18 short contacts:

Mol	Chain	Res	Type	Clashes	Symm-Clashes
3	A	1296	MRD	1	0
2	A	1295	MPD	6	0
2	A	1300	MPD	3	0
3	A	1298	MRD	2	0

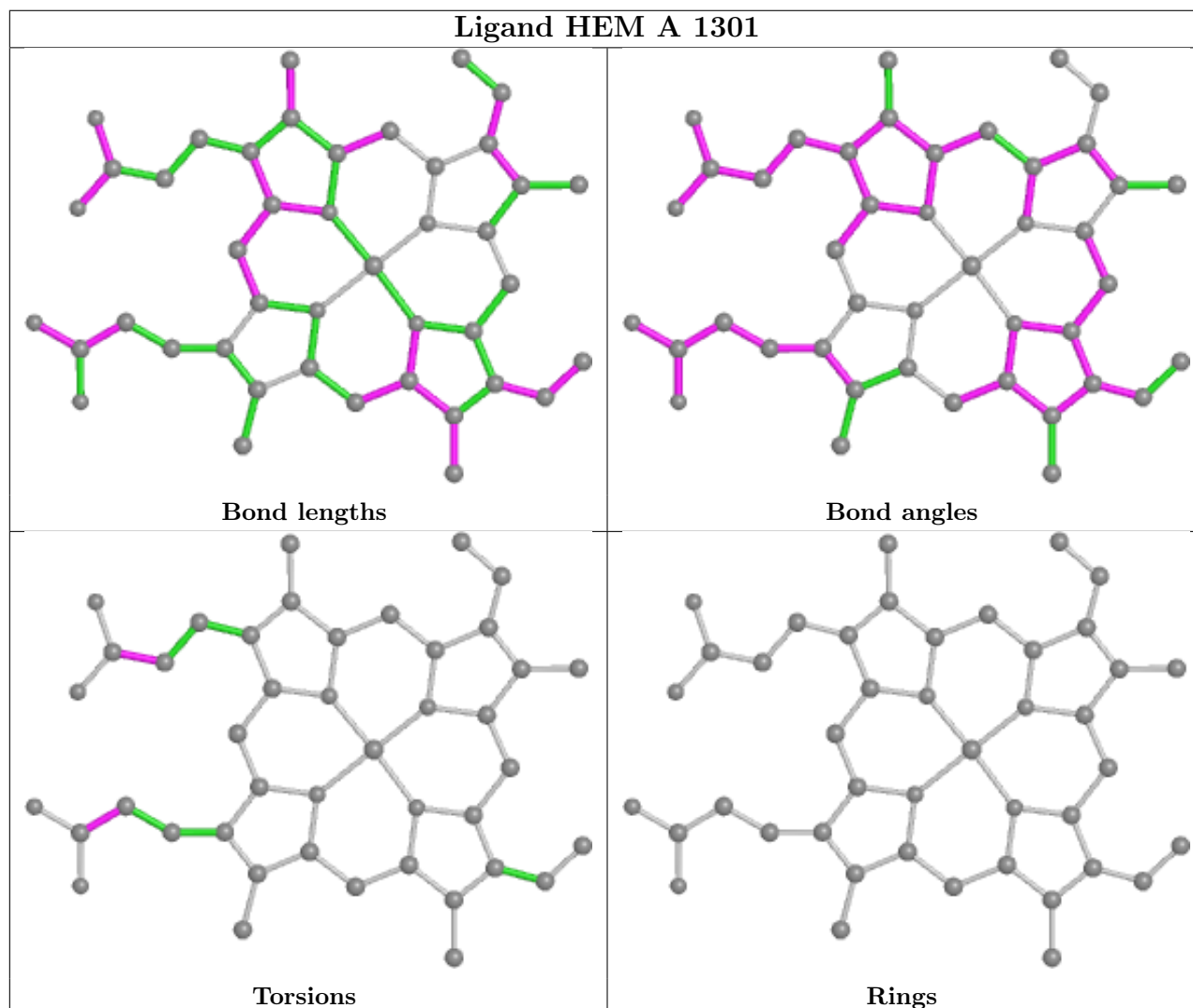
Continued on next page...



Continued from previous page...

Mol	Chain	Res	Type	Clashes	Symm-Clashes
3	A	1299	MRD	4	0
2	A	1297	MPD	2	0

The following is a two-dimensional graphical depiction of Mogul quality analysis of bond lengths, bond angles, torsion angles, and ring geometry for all instances of the Ligand of Interest. In addition, ligands with molecular weight > 250 and outliers as shown on the validation Tables will also be included. For torsion angles, if less than 5% of the Mogul distribution of torsion angles is within 10 degrees of the torsion angle in question, then that torsion angle is considered an outlier. Any bond that is central to one or more torsion angles identified as an outlier by Mogul will be highlighted in the graph. For rings, the root-mean-square deviation (RMSD) between the ring in question and similar rings identified by Mogul is calculated over all ring torsion angles. If the average RMSD is greater than 60 degrees and the minimal RMSD between the ring in question and any Mogul-identified rings is also greater than 60 degrees, then that ring is considered an outlier. The outliers are highlighted in purple. The color gray indicates Mogul did not find sufficient equivalents in the CSD to analyse the geometry.



## 5.7 Other polymers [i](#)

There are no such residues in this entry.

## 5.8 Polymer linkage issues [i](#)

There are no chain breaks in this entry.

## 6 Fit of model and data [i](#)

### 6.1 Protein, DNA and RNA chains [i](#)

In the following table, the column labelled ‘#RSRZ> 2’ contains the number (and percentage) of RSRZ outliers, followed by percent RSRZ outliers for the chain as percentile scores relative to all X-ray entries and entries of similar resolution. The OWAB column contains the minimum, median, 95<sup>th</sup> percentile and maximum values of the occupancy-weighted average B-factor per residue. The column labelled ‘Q< 0.9’ lists the number of (and percentage) of residues with an average occupancy less than 0.9.

Mol	Chain	Analysed	<RSRZ>	#RSRZ>2	OWAB(Å <sup>2</sup> )	Q<0.9
1	A	293/294 (99%)	-0.06	3 (1%) 82 85	10, 15, 26, 84	0

All (3) RSRZ outliers are listed below:

Mol	Chain	Res	Type	RSRZ
1	A	3	THR	9.1
1	A	2	LYS	7.0
1	A	226[A]	LYS	4.2

### 6.2 Non-standard residues in protein, DNA, RNA chains [i](#)

There are no non-standard protein/DNA/RNA residues in this entry.

### 6.3 Carbohydrates [i](#)

There are no monosaccharides in this entry.

### 6.4 Ligands [i](#)

In the following table, the Atoms column lists the number of modelled atoms in the group and the number defined in the chemical component dictionary. The B-factors column lists the minimum, median, 95<sup>th</sup> percentile and maximum values of B factors of atoms in the group. The column labelled ‘Q< 0.9’ lists the number of atoms with occupancy less than 0.9.

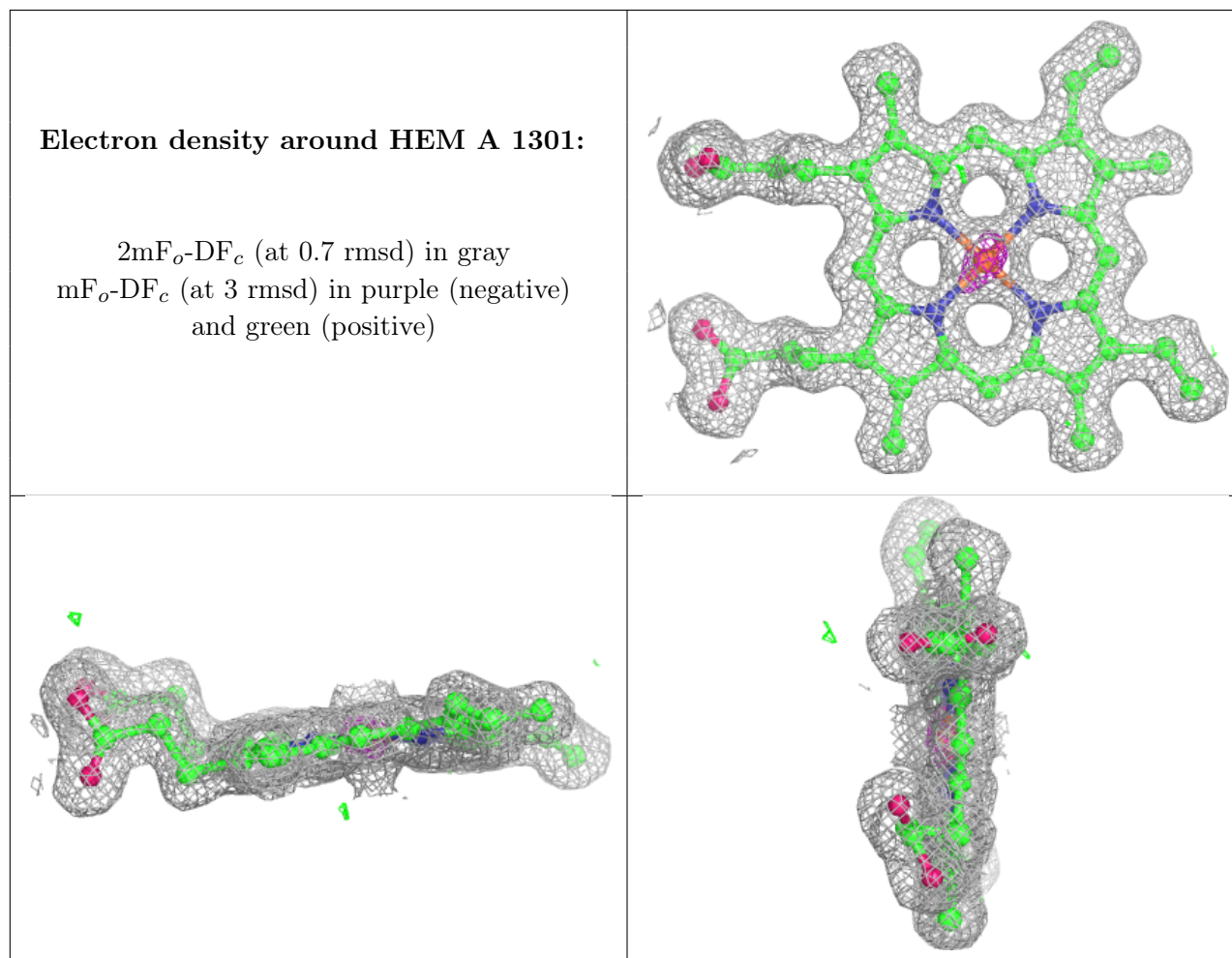
Mol	Type	Chain	Res	Atoms	RSCC	RSR	B-factors(Å <sup>2</sup> )	Q<0.9
2	MPD	A	1300	8/8	0.29	0.41	96,102,104,109	0
3	MRD	A	1299	8/8	0.70	0.28	31,46,57,65	0
5	PO4	A	1302	5/5	0.71	0.23	64,83,93,103	5
2	MPD	A	1297	8/8	0.74	0.22	17,28,30,37	8

*Continued on next page...*

Continued from previous page...

Mol	Type	Chain	Res	Atoms	RSCC	RSR	B-factors( $\text{\AA}^2$ )	Q<0.9
3	MRD	A	1298	8/8	0.76	0.17	40,57,63,68	0
3	MRD	A	1296	8/8	0.87	0.21	25,35,56,61	0
2	MPD	A	1295	8/8	0.95	0.13	17,19,42,44	0
4	HEM	A	1301	43/43	0.98	0.10	8,11,14,16	0

The following is a graphical depiction of the model fit to experimental electron density of all instances of the Ligand of Interest. In addition, ligands with molecular weight > 250 and outliers as shown on the geometry validation Tables will also be included. Each fit is shown from different orientation to approximate a three-dimensional view.



## 6.5 Other polymers [\(i\)](#)

There are no such residues in this entry.