



Full wwPDB X-ray Structure Validation Report ⓘ

Nov 13, 2023 – 04:05 PM JST

PDB ID : 5XLS
Title : Crystal structure of UraA in occluded conformation
Authors : Yu, X.Z.; Yang, G.H.; Yan, C.Y.; Yan, N.
Deposited on : 2017-05-11
Resolution : 2.50 Å(reported)

This is a Full wwPDB X-ray Structure Validation Report for a publicly released PDB entry.

We welcome your comments at validation@mail.wwpdb.org

A user guide is available at

<https://www.wwpdb.org/validation/2017/XrayValidationReportHelp>

with specific help available everywhere you see the ⓘ symbol.

The types of validation reports are described at

<http://www.wwpdb.org/validation/2017/FAQs#types>.

The following versions of software and data (see [references ⓘ](#)) were used in the production of this report:

MolProbity : 4.02b-467
Mogul : 1.8.5 (274361), CSD as541be (2020)
Xtriage (Phenix) : 1.13
EDS : 2.36
buster-report : 1.1.7 (2018)
Percentile statistics : 20191225.v01 (using entries in the PDB archive December 25th 2019)
Refmac : 5.8.0158
CCP4 : 7.0.044 (Gargrove)
Ideal geometry (proteins) : Engh & Huber (2001)
Ideal geometry (DNA, RNA) : Parkinson et al. (1996)
Validation Pipeline (wwPDB-VP) : 2.36

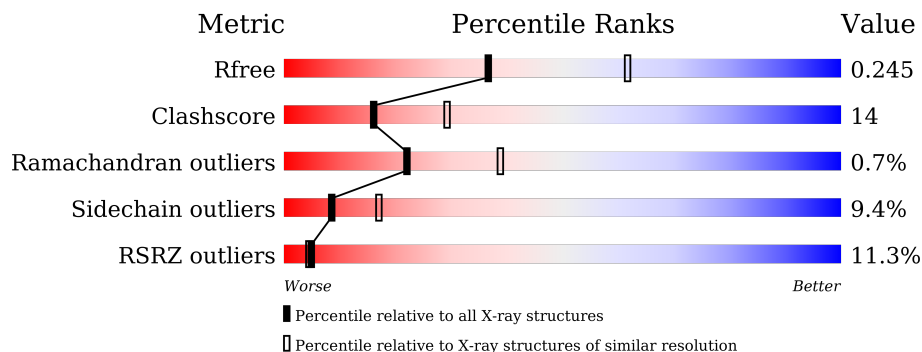
1 Overall quality at a glance

The following experimental techniques were used to determine the structure:

X-RAY DIFFRACTION

The reported resolution of this entry is 2.50 Å.

Percentile scores (ranging between 0-100) for global validation metrics of the entry are shown in the following graphic. The table shows the number of entries on which the scores are based.



Metric	Whole archive (#Entries)	Similar resolution (#Entries, resolution range(Å))
R_{free}	130704	4661 (2.50-2.50)
Clashscore	141614	5346 (2.50-2.50)
Ramachandran outliers	138981	5231 (2.50-2.50)
Sidechain outliers	138945	5233 (2.50-2.50)
RSRZ outliers	127900	4559 (2.50-2.50)

The table below summarises the geometric issues observed across the polymeric chains and their fit to the electron density. The red, orange, yellow and green segments of the lower bar indicate the fraction of residues that contain outliers for ≥ 3 , 2, 1 and 0 types of geometric quality criteria respectively. A grey segment represents the fraction of residues that are not modelled. The numeric value for each fraction is indicated below the corresponding segment, with a dot representing fractions $\leq 5\%$. The upper red bar (where present) indicates the fraction of residues that have poor fit to the electron density. The numeric value is given above the bar.

Mol	Chain	Length	Quality of chain
1	A	435	

The following table lists non-polymeric compounds, carbohydrate monomers and non-standard residues in protein, DNA, RNA chains that are outliers for geometric or electron-density-fit criteria:

Mol	Type	Chain	Res	Chirality	Geometry	Clashes	Electron density
2	URA	A	501	-	X	-	-
3	KEG	A	502	-	-	X	-

Continued on next page...

Continued from previous page...

Mol	Type	Chain	Res	Chirality	Geometry	Clashes	Electron density
3	KEG	A	503	-	-	X	-

2 Entry composition i

There are 4 unique types of molecules in this entry. The entry contains 3160 atoms, of which 0 are hydrogens and 0 are deuteriums.

In the tables below, the ZeroOcc column contains the number of atoms modelled with zero occupancy, the AltConf column contains the number of residues with at least one atom in alternate conformation and the Trace column contains the number of residues modelled with at most 2 atoms.

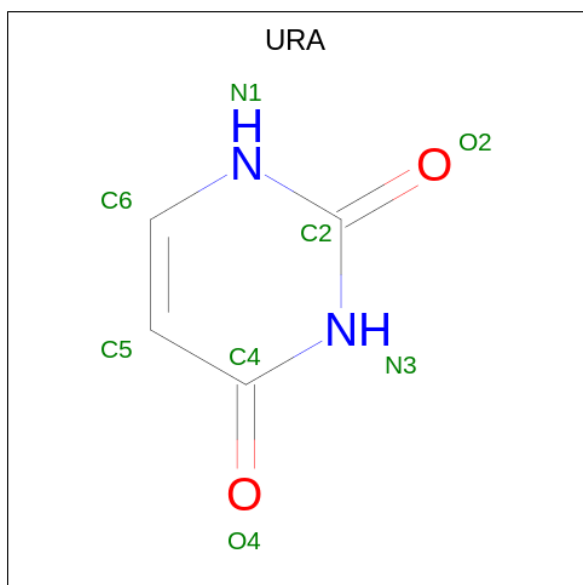
- Molecule 1 is a protein called Uracil permease.

Mol	Chain	Residues	Atoms					ZeroOcc	AltConf	Trace
			Total	C	N	O	S			
1	A	408	3006	2010	472	509	15	0	1	0

There are 8 discrepancies between the modelled and reference sequences:

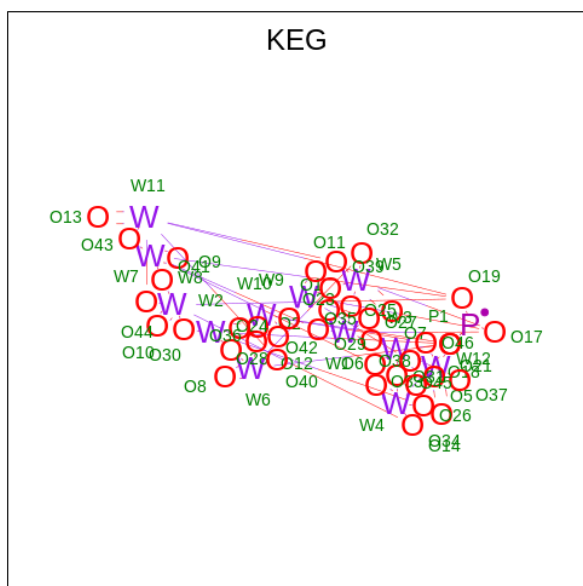
Chain	Residue	Modelled	Actual	Comment	Reference
A	421	GLU	ALA	conflict	UNP P0AGM8
A	422	VAL	GLU	conflict	UNP P0AGM8
A	430	HIS	-	expression tag	UNP P0AGM8
A	431	HIS	-	expression tag	UNP P0AGM8
A	432	HIS	-	expression tag	UNP P0AGM8
A	433	HIS	-	expression tag	UNP P0AGM8
A	434	HIS	-	expression tag	UNP P0AGM8
A	435	HIS	-	expression tag	UNP P0AGM8

- Molecule 2 is URACIL (three-letter code: URA) (formula: $C_4H_4N_2O_2$).



Mol	Chain	Residues	Atoms				ZeroOcc	AltConf
2	A	1	Total	C	N	O	0	0
			8	4	2	2		

- Molecule 3 is 12-TUNGSTOPHOSPHATE (three-letter code: KEG) (formula: $O_{40}PW_{12}$).



Mol	Chain	Residues	Atoms			ZeroOcc	AltConf
3	A	1	Total	O	W	0	0
			52	40	12		
3	A	1	Total	O	W	0	0
			52	40	12		

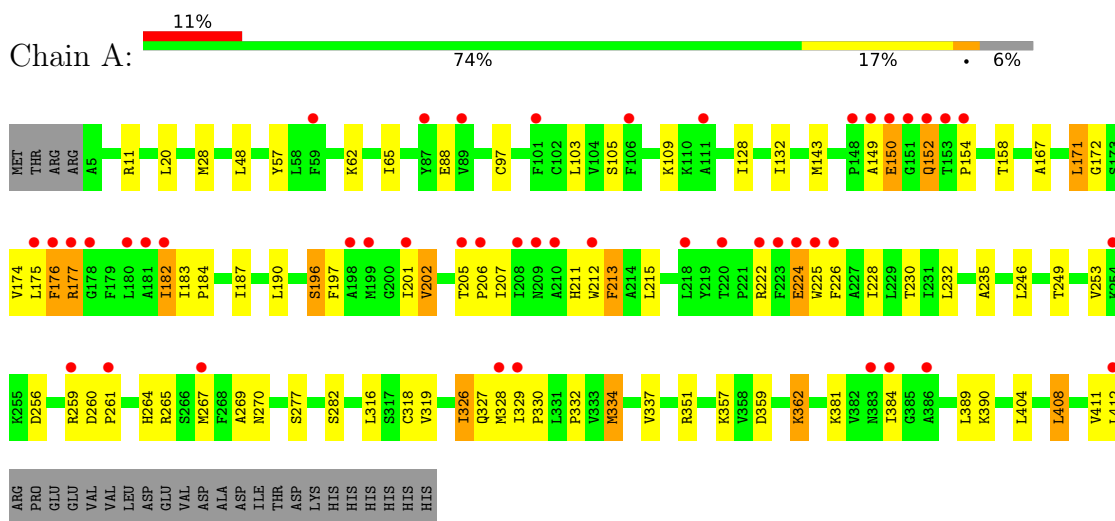
- Molecule 4 is water.

Mol	Chain	Residues	Atoms		ZeroOcc	AltConf
4	A	42	Total	O	0	0
			42	42		

3 Residue-property plots [i](#)

These plots are drawn for all protein, RNA, DNA and oligosaccharide chains in the entry. The first graphic for a chain summarises the proportions of the various outlier classes displayed in the second graphic. The second graphic shows the sequence view annotated by issues in geometry and electron density. Residues are color-coded according to the number of geometric quality criteria for which they contain at least one outlier: green = 0, yellow = 1, orange = 2 and red = 3 or more. A red dot above a residue indicates a poor fit to the electron density ($RSRZ > 2$). Stretches of 2 or more consecutive residues without any outlier are shown as a green connector. Residues present in the sample, but not in the model, are shown in grey.

- Molecule 1: Uracil permease



4 Data and refinement statistics i

Property	Value	Source
Space group	C 2 2 21	Depositor
Cell constants a, b, c, α , β , γ	74.72Å 134.73Å 143.45Å 90.00° 90.00° 90.00°	Depositor
Resolution (Å)	32.79 – 2.50 32.79 – 2.50	Depositor EDS
% Data completeness (in resolution range)	93.0 (32.79-2.50) 97.5 (32.79-2.50)	Depositor EDS
R_{merge}	(Not available)	Depositor
R_{sym}	0.12	Depositor
$\langle I/\sigma(I) \rangle$ ¹	2.34 (at 2.51Å)	Xtrriage
Refinement program	PHENIX 1.7.3_928	Depositor
R, R_{free}	0.226 , 0.247 0.220 , 0.245	Depositor DCC
R_{free} test set	1276 reflections (5.12%)	wwPDB-VP
Wilson B-factor (Å ²)	44.1	Xtrriage
Anisotropy	0.515	Xtrriage
Bulk solvent k_{sol} (e/Å ³), B_{sol} (Å ²)	0.33 , 47.5	EDS
L-test for twinning ²	$\langle L \rangle = 0.49$, $\langle L^2 \rangle = 0.32$	Xtrriage
Estimated twinning fraction	0.013 for 1/2*h-1/2*k,-3/2*h-1/2*k,-l 0.016 for 1/2*h+1/2*k,3/2*h-1/2*k,-l	Xtrriage
F_o, F_c correlation	0.94	EDS
Total number of atoms	3160	wwPDB-VP
Average B, all atoms (Å ²)	51.0	wwPDB-VP

Xtrriage's analysis on translational NCS is as follows: *The largest off-origin peak in the Patterson function is 8.17% of the height of the origin peak. No significant pseudotranslation is detected.*

¹Intensities estimated from amplitudes.

²Theoretical values of $\langle |L| \rangle$, $\langle L^2 \rangle$ for acentric reflections are 0.5, 0.333 respectively for untwinned datasets, and 0.375, 0.2 for perfectly twinned datasets.

5 Model quality [i](#)

5.1 Standard geometry [i](#)

Bond lengths and bond angles in the following residue types are not validated in this section: KEG, URA

The Z score for a bond length (or angle) is the number of standard deviations the observed value is removed from the expected value. A bond length (or angle) with $|Z| > 5$ is considered an outlier worth inspection. RMSZ is the root-mean-square of all Z scores of the bond lengths (or angles).

Mol	Chain	Bond lengths		Bond angles	
		RMSZ	# Z >5	RMSZ	# Z >5
1	A	0.35	0/3074	0.47	0/4200

Chiral center outliers are detected by calculating the chiral volume of a chiral center and verifying if the center is modelled as a planar moiety or with the opposite hand. A planarity outlier is detected by checking planarity of atoms in a peptide group, atoms in a mainchain group or atoms of a sidechain that are expected to be planar.

Mol	Chain	#Chirality outliers	#Planarity outliers
1	A	0	1

There are no bond length outliers.

There are no bond angle outliers.

There are no chirality outliers.

All (1) planarity outliers are listed below:

Mol	Chain	Res	Type	Group
1	A	334[B]	MET	Mainchain

5.2 Too-close contacts [i](#)

In the following table, the Non-H and H(model) columns list the number of non-hydrogen atoms and hydrogen atoms in the chain respectively. The H(added) column lists the number of hydrogen atoms added and optimized by MolProbity. The Clashes column lists the number of clashes within the asymmetric unit, whereas Symm-Clashes lists symmetry-related clashes.

Mol	Chain	Non-H	H(model)	H(added)	Clashes	Symm-Clashes
1	A	3006	0	3229	76	5
2	A	8	0	3	0	0

Continued on next page...

Continued from previous page...

Mol	Chain	Non-H	H(model)	H(added)	Clashes	Symm-Clashes
3	A	104	0	0	26	5
4	A	42	0	0	0	0
All	All	3160	0	3232	92	5

The all-atom clashscore is defined as the number of clashes found per 1000 atoms (including hydrogen atoms). The all-atom clashscore for this structure is 14.

All (92) close contacts within the same asymmetric unit are listed below, sorted by their clash magnitude.

Atom-1	Atom-2	Interatomic distance (Å)	Clash overlap (Å)
1:A:329:ILE:HD13	1:A:334[B]:MET:CE	1.79	1.13
1:A:176:PHE:HD1	1:A:177:ARG:NH2	1.51	1.06
1:A:177:ARG:HE	1:A:177:ARG:H	1.07	1.01
1:A:109:LYS:HE3	3:A:502:KEG:O35	1.59	1.00
1:A:176:PHE:CD1	1:A:177:ARG:NH2	2.30	0.96
1:A:177:ARG:HE	1:A:177:ARG:N	1.72	0.87
1:A:176:PHE:HD1	1:A:177:ARG:HH21	0.91	0.87
1:A:211:HIS:CD2	3:A:503:KEG:O29	2.29	0.85
1:A:20:LEU:HD21	1:A:182:ILE:CG2	2.07	0.84
1:A:197:PHE:HA	1:A:202:VAL:CG1	2.09	0.82
1:A:211:HIS:HD2	3:A:503:KEG:O29	1.60	0.82
1:A:329:ILE:HD13	1:A:334[B]:MET:HE3	1.60	0.82
1:A:177:ARG:H	1:A:177:ARG:NE	1.79	0.80
1:A:329:ILE:HD13	1:A:334[B]:MET:HE2	1.64	0.77
3:A:502:KEG:O32	3:A:502:KEG:O39	2.04	0.75
1:A:211:HIS:HD2	3:A:503:KEG:O25	1.71	0.74
1:A:329:ILE:CD1	1:A:334[B]:MET:CE	2.65	0.73
1:A:177:ARG:N	1:A:177:ARG:NE	2.37	0.73
1:A:411:VAL:HG12	1:A:412:LEU:N	2.05	0.70
1:A:213:PHE:HA	1:A:318:CYS:O	1.92	0.69
1:A:177:ARG:O	1:A:177:ARG:HD2	1.94	0.67
3:A:502:KEG:O45	3:A:502:KEG:O42	2.12	0.67
3:A:503:KEG:O31	3:A:503:KEG:O34	2.14	0.66
3:A:503:KEG:O32	3:A:503:KEG:O35	2.13	0.65
1:A:197:PHE:HA	1:A:202:VAL:HG11	1.76	0.65
1:A:222:ARG:NH2	1:A:224:GLU:HG3	2.13	0.64
1:A:20:LEU:HD21	1:A:182:ILE:HG23	1.79	0.64
1:A:329:ILE:CD1	1:A:334[B]:MET:HE3	2.24	0.63
1:A:265:ARG:NE	3:A:502:KEG:O27	2.29	0.63
1:A:62:LYS:NZ	3:A:502:KEG:O1	2.30	0.61
1:A:197:PHE:HD1	1:A:202:VAL:HG11	1.64	0.61

Continued on next page...

Continued from previous page...

Atom-1	Atom-2	Interatomic distance (Å)	Clash overlap (Å)
1:A:158:THR:HG23	1:A:332:PRO:HG3	1.83	0.59
3:A:502:KEG:O25	3:A:502:KEG:O29	2.21	0.58
1:A:197:PHE:CD1	1:A:202:VAL:HG11	2.40	0.57
1:A:212:TRP:O	1:A:319:VAL:HA	2.04	0.57
1:A:316:LEU:HD21	1:A:326:ILE:HG13	1.85	0.57
1:A:359:ASP:OD2	1:A:362:LYS:HE3	2.04	0.57
1:A:149:ALA:O	1:A:150:GLU:C	2.44	0.56
1:A:176:PHE:HA	1:A:177:ARG:NH2	2.22	0.54
1:A:152:GLN:O	1:A:154:PRO:HD3	2.07	0.54
1:A:109:LYS:NZ	3:A:502:KEG:O13	2.38	0.54
1:A:224:GLU:O	1:A:228:ILE:HG13	2.07	0.54
1:A:176:PHE:HA	1:A:177:ARG:HH21	1.72	0.54
1:A:277:SER:HB3	1:A:282:SER:HB3	1.90	0.54
1:A:167:ALA:O	1:A:171:LEU:HB2	2.08	0.53
3:A:503:KEG:O32	3:A:503:KEG:O39	2.27	0.53
1:A:65:ILE:HD13	1:A:246:LEU:HD11	1.91	0.52
3:A:503:KEG:O46	3:A:503:KEG:O21	2.27	0.52
1:A:224:GLU:OE2	1:A:226:PHE:CE1	2.63	0.52
3:A:503:KEG:O29	3:A:503:KEG:O39	2.28	0.51
3:A:502:KEG:O30	3:A:502:KEG:O40	2.28	0.51
1:A:62:LYS:NZ	3:A:502:KEG:O37	2.38	0.51
1:A:20:LEU:HD21	1:A:182:ILE:HG21	1.91	0.50
1:A:175:LEU:O	1:A:176:PHE:O	2.29	0.50
3:A:503:KEG:O30	3:A:503:KEG:O40	2.29	0.50
3:A:503:KEG:O34	3:A:503:KEG:O33	2.29	0.50
3:A:502:KEG:O33	3:A:502:KEG:O34	2.30	0.50
3:A:502:KEG:O46	3:A:502:KEG:O26	2.30	0.50
1:A:222:ARG:NH2	1:A:224:GLU:OE1	2.44	0.49
3:A:503:KEG:O14	3:A:503:KEG:O1	2.29	0.49
1:A:177:ARG:N	1:A:177:ARG:CD	2.73	0.49
1:A:202:VAL:HG22	1:A:202:VAL:O	2.12	0.49
1:A:329:ILE:CD1	1:A:334[B]:MET:HE2	2.39	0.49
1:A:57:TYR:HA	1:A:269:ALA:HB1	1.94	0.48
1:A:109:LYS:NZ	3:A:502:KEG:O32	2.45	0.48
1:A:381:LYS:HB3	1:A:390:LYS:HB2	1.95	0.48
1:A:226:PHE:O	1:A:230:THR:HG23	2.14	0.48
1:A:260:ASP:HA	1:A:261:PRO:C	2.34	0.48
1:A:381:LYS:CB	1:A:390:LYS:HB2	2.44	0.48
3:A:503:KEG:O32	3:A:503:KEG:O42	2.31	0.48
1:A:197:PHE:HA	1:A:202:VAL:HG12	1.94	0.47
1:A:105:SER:OG	1:A:264:HIS:O	2.32	0.47

Continued on next page...

Continued from previous page...

Atom-1	Atom-2	Interatomic distance (Å)	Clash overlap (Å)
1:A:128:ILE:O	1:A:132:ILE:HG13	2.15	0.47
1:A:172:GLY:O	1:A:176:PHE:HB2	2.15	0.47
1:A:326:ILE:HG22	1:A:327:GLN:N	2.29	0.46
1:A:211:HIS:CD2	3:A:503:KEG:O25	2.61	0.46
1:A:109:LYS:HG3	1:A:264:HIS:CD2	2.51	0.46
1:A:183:ILE:O	1:A:187:ILE:HG12	2.16	0.46
1:A:206:PRO:HG2	1:A:328:MET:HG3	1.98	0.46
1:A:177:ARG:HD2	1:A:177:ARG:C	2.36	0.46
1:A:182:ILE:C	1:A:184:PRO:HD3	2.37	0.44
3:A:502:KEG:O39	3:A:502:KEG:O29	2.35	0.44
1:A:389:LEU:HD12	1:A:389:LEU:HA	1.86	0.43
1:A:249:THR:O	1:A:253:VAL:HG22	2.18	0.43
1:A:182:ILE:HG22	1:A:183:ILE:HG23	2.00	0.43
1:A:97:CYS:SG	1:A:235:ALA:HB2	2.58	0.43
1:A:226:PHE:CD2	1:A:226:PHE:C	2.92	0.43
1:A:408:LEU:O	1:A:412:LEU:N	2.45	0.42
1:A:212:TRP:O	1:A:319:VAL:HG13	2.21	0.41
1:A:215:LEU:HD12	1:A:215:LEU:HA	1.91	0.41
1:A:232:LEU:HD12	1:A:232:LEU:HA	1.87	0.41
1:A:196:SER:OG	1:A:330:PRO:HG2	2.21	0.40

All (5) symmetry-related close contacts are listed below. The label for Atom-2 includes the symmetry operator and encoded unit-cell translations to be applied.

Atom-1	Atom-2	Interatomic distance (Å)	Clash overlap (Å)
1:A:224:GLU:OE2	3:A:502:KEG:O13[8_455]	1.76	0.44
1:A:224:GLU:CD	3:A:502:KEG:O13[8_455]	1.86	0.34
1:A:225:TRP:CD1	3:A:502:KEG:O9[8_455]	1.87	0.33
1:A:224:GLU:OE1	3:A:502:KEG:O13[8_455]	1.99	0.21
1:A:226:PHE:CD1	3:A:502:KEG:O40[8_455]	2.03	0.17

5.3 Torsion angles [i](#)

5.3.1 Protein backbone [i](#)

In the following table, the Percentiles column shows the percent Ramachandran outliers of the chain as a percentile score with respect to all X-ray entries followed by that with respect to entries of similar resolution.

The Analysed column shows the number of residues for which the backbone conformation was

analysed, and the total number of residues.

Mol	Chain	Analysed	Favoured	Allowed	Outliers	Percentiles
1	A	407/435 (94%)	391 (96%)	13 (3%)	3 (1%)	22 39

All (3) Ramachandran outliers are listed below:

Mol	Chain	Res	Type
1	A	176	PHE
1	A	150	GLU
1	A	256	ASP

5.3.2 Protein sidechains [i](#)

In the following table, the Percentiles column shows the percent sidechain outliers of the chain as a percentile score with respect to all X-ray entries followed by that with respect to entries of similar resolution.

The Analysed column shows the number of residues for which the sidechain conformation was analysed, and the total number of residues.

Mol	Chain	Analysed	Rotameric	Outliers	Percentiles
1	A	321/347 (92%)	291 (91%)	30 (9%)	9 17

All (30) residues with a non-rotameric sidechain are listed below:

Mol	Chain	Res	Type
1	A	11	ARG
1	A	28	MET
1	A	48	LEU
1	A	88	GLU
1	A	103	LEU
1	A	143	MET
1	A	152	GLN
1	A	171	LEU
1	A	174	VAL
1	A	177	ARG
1	A	182	ILE
1	A	190	LEU
1	A	196	SER
1	A	201	ILE
1	A	202	VAL
1	A	205	THR
1	A	207	ILE

Continued on next page...

Continued from previous page...

Mol	Chain	Res	Type
1	A	213	PHE
1	A	224	GLU
1	A	259	ARG
1	A	267	MET
1	A	270	ASN
1	A	326	ILE
1	A	337	VAL
1	A	351	ARG
1	A	357	LYS
1	A	362	LYS
1	A	384	ILE
1	A	404	LEU
1	A	408	LEU

Sometimes sidechains can be flipped to improve hydrogen bonding and reduce clashes. All (1) such sidechains are listed below:

Mol	Chain	Res	Type
1	A	211	HIS

5.3.3 RNA [i](#)

There are no RNA molecules in this entry.

5.4 Non-standard residues in protein, DNA, RNA chains [i](#)

There are no non-standard protein/DNA/RNA residues in this entry.

5.5 Carbohydrates [i](#)

There are no monosaccharides in this entry.

5.6 Ligand geometry [i](#)

3 ligands are modelled in this entry.

In the following table, the Counts columns list the number of bonds (or angles) for which Mogul statistics could be retrieved, the number of bonds (or angles) that are observed in the model and the number of bonds (or angles) that are defined in the Chemical Component Dictionary. The Link column lists molecule types, if any, to which the group is linked. The Z score for a bond

length (or angle) is the number of standard deviations the observed value is removed from the expected value. A bond length (or angle) with $|Z| > 2$ is considered an outlier worth inspection. RMSZ is the root-mean-square of all Z scores of the bond lengths (or angles).

Mol	Type	Chain	Res	Link	Bond lengths			Bond angles		
					Counts	RMSZ	# Z > 2	Counts	RMSZ	# Z > 2
3	KEG	A	503	1	72,72,76	5.53	56 (77%)	-		
2	URA	A	501	-	8,8,8	1.73	2 (25%)	9,10,10	3.11	6 (66%)
3	KEG	A	502	1	72,72,76	7.20	67 (93%)	-		

In the following table, the Chirals column lists the number of chiral outliers, the number of chiral centers analysed, the number of these observed in the model and the number defined in the Chemical Component Dictionary. Similar counts are reported in the Torsion and Rings columns. '-' means no outliers of that kind were identified.

Mol	Type	Chain	Res	Link	Chirals	Torsions	Rings
2	URA	A	501	-	-	-	0/1/1/1

All (125) bond length outliers are listed below:

Mol	Chain	Res	Type	Atoms	Z	Observed(Å)	Ideal(Å)
3	A	502	KEG	W10-O12	12.60	2.04	1.71
3	A	502	KEG	W12-O14	12.60	2.04	1.71
3	A	502	KEG	W3-O5	12.60	2.04	1.71
3	A	502	KEG	W2-O2	12.59	2.04	1.71
3	A	502	KEG	W1-O1	12.59	2.04	1.71
3	A	502	KEG	W7-O9	12.58	2.04	1.71
3	A	502	KEG	W5-O7	12.58	2.04	1.71
3	A	502	KEG	W9-O11	12.58	2.04	1.71
3	A	502	KEG	W4-O6	12.57	2.04	1.71
3	A	502	KEG	W8-O10	12.57	2.04	1.71
3	A	502	KEG	W6-O8	12.56	2.04	1.71
3	A	502	KEG	W11-O13	12.56	2.04	1.71
3	A	502	KEG	W7-O29	9.93	2.60	1.93
3	A	502	KEG	W1-O29	9.70	2.58	1.93
3	A	503	KEG	W12-O45	9.38	2.56	1.93
3	A	503	KEG	W1-O25	9.21	2.55	1.93
3	A	503	KEG	W11-O13	8.93	1.94	1.71
3	A	503	KEG	W8-O10	8.92	1.94	1.71
3	A	502	KEG	W6-O32	8.67	2.51	1.93
3	A	503	KEG	W2-O2	8.64	1.94	1.71
3	A	503	KEG	W6-O8	8.59	1.94	1.71
3	A	502	KEG	W5-O32	8.49	2.50	1.93
3	A	502	KEG	W12-O45	8.30	2.49	1.93

Continued on next page...

Continued from previous page...

Mol	Chain	Res	Type	Atoms	Z	Observed(Å)	Ideal(Å)
3	A	502	KEG	W2-O28	8.24	2.24	1.93
3	A	502	KEG	W9-O45	8.18	2.48	1.93
3	A	502	KEG	W5-O23	8.07	2.23	1.93
3	A	503	KEG	W9-O45	7.66	2.45	1.93
3	A	503	KEG	W10-O46	7.58	2.44	1.93
3	A	503	KEG	W7-O29	7.56	2.44	1.93
3	A	503	KEG	W6-O18	-7.53	1.87	2.25
3	A	502	KEG	W11-O43	7.52	2.21	1.93
3	A	503	KEG	W12-O46	7.41	2.43	1.93
3	A	503	KEG	W5-O17	-7.41	1.87	2.25
3	A	502	KEG	W6-O36	7.35	2.20	1.93
3	A	502	KEG	W9-O27	7.22	2.20	1.93
3	A	503	KEG	W3-O25	7.20	2.41	1.93
3	A	503	KEG	W5-O7	7.10	1.90	1.71
3	A	503	KEG	W8-O19	-7.09	1.89	2.25
3	A	503	KEG	W4-O21	-7.04	1.89	2.25
3	A	503	KEG	W4-O6	6.94	1.89	1.71
3	A	503	KEG	W7-O9	6.90	1.89	1.71
3	A	502	KEG	W10-O36	6.89	2.19	1.93
3	A	503	KEG	W5-O23	6.89	2.19	1.93
3	A	503	KEG	W1-O29	6.84	2.39	1.93
3	A	502	KEG	W9-O35	6.80	2.18	1.93
3	A	503	KEG	W3-O5	6.73	1.89	1.71
3	A	503	KEG	W3-O21	-6.73	1.91	2.25
3	A	503	KEG	W9-O11	6.65	1.89	1.71
3	A	503	KEG	W10-O18	-6.64	1.91	2.25
3	A	503	KEG	W10-O12	6.55	1.88	1.71
3	A	502	KEG	W8-O19	-6.44	1.92	2.25
3	A	502	KEG	W10-O28	6.44	2.17	1.93
3	A	503	KEG	W11-O43	6.40	2.17	1.93
3	A	502	KEG	W4-O31	6.37	2.17	1.93
3	A	503	KEG	W7-O19	-6.36	1.93	2.25
3	A	503	KEG	W9-O17	-6.30	1.93	2.25
3	A	502	KEG	W7-O43	6.26	2.16	1.93
3	A	503	KEG	W6-O32	6.25	2.35	1.93
3	A	503	KEG	W5-O32	6.24	2.35	1.93
3	A	503	KEG	W1-O17	-6.14	1.94	2.25
3	A	503	KEG	W12-O14	6.09	1.87	1.71
3	A	502	KEG	W8-O44	6.05	2.16	1.93
3	A	503	KEG	W2-O18	-6.05	1.94	2.25
3	A	503	KEG	W2-O28	6.02	2.15	1.93
3	A	502	KEG	W1-O27	5.98	2.15	1.93

Continued on next page...

Continued from previous page...

Mol	Chain	Res	Type	Atoms	Z	Observed(Å)	Ideal(Å)
3	A	503	KEG	W11-O19	-5.98	1.94	2.25
3	A	502	KEG	W1-O23	5.96	2.15	1.93
3	A	503	KEG	W8-O34	5.92	2.33	1.93
3	A	503	KEG	W9-O27	5.89	2.15	1.93
3	A	502	KEG	W4-O38	5.88	2.15	1.93
3	A	503	KEG	W4-O34	5.84	2.32	1.93
3	A	502	KEG	W5-O35	5.72	2.14	1.93
3	A	502	KEG	W9-O17	-5.61	1.96	2.25
3	A	502	KEG	W3-O37	5.59	2.14	1.93
3	A	503	KEG	W1-O1	5.59	1.86	1.71
3	A	502	KEG	W8-O41	5.53	2.14	1.93
3	A	502	KEG	W12-O38	5.51	2.13	1.93
3	A	502	KEG	W2-O24	5.48	2.13	1.93
3	A	502	KEG	W2-O18	-5.36	1.98	2.25
3	A	502	KEG	W1-O17	-5.36	1.98	2.25
3	A	502	KEG	W11-O44	5.29	2.13	1.93
3	A	503	KEG	W12-O21	-5.24	1.98	2.25
3	A	502	KEG	W11-O19	-5.23	1.98	2.25
3	A	502	KEG	W6-O24	5.22	2.12	1.93
3	A	502	KEG	W3-O31	5.22	2.12	1.93
3	A	502	KEG	W4-O21	-5.20	1.98	2.25
3	A	502	KEG	W12-O37	5.16	2.12	1.93
3	A	502	KEG	W7-O41	5.13	2.12	1.93
3	A	502	KEG	W5-O17	-5.02	1.99	2.25
3	A	503	KEG	W5-O35	4.90	2.11	1.93
3	A	503	KEG	W4-O31	4.81	2.11	1.93
3	A	502	KEG	W3-O21	-4.79	2.01	2.25
3	A	502	KEG	W12-O21	-4.74	2.01	2.25
3	A	503	KEG	W8-O44	4.37	2.09	1.93
3	A	502	KEG	W6-O18	-4.32	2.03	2.25
3	A	503	KEG	W11-O44	4.29	2.09	1.93
3	A	503	KEG	W12-O38	4.15	2.08	1.93
3	A	502	KEG	W7-O19	-4.03	2.04	2.25
3	A	503	KEG	W4-O38	4.03	2.08	1.93
3	A	503	KEG	W3-O37	3.80	2.07	1.93
3	A	503	KEG	W2-O24	3.69	2.07	1.93
3	A	502	KEG	W3-O33	3.61	2.17	1.93
3	A	502	KEG	W11-O39	3.46	2.16	1.93
3	A	503	KEG	W10-O28	3.39	2.05	1.93
3	A	502	KEG	W10-O18	-3.39	2.08	2.25
3	A	502	KEG	W10-O42	3.37	2.16	1.93
3	A	502	KEG	W3-O25	3.33	2.15	1.93

Continued on next page...

Continued from previous page...

Mol	Chain	Res	Type	Atoms	Z	Observed(Å)	Ideal(Å)
3	A	502	KEG	W7-O33	3.14	2.14	1.93
3	A	502	KEG	W5-O39	2.79	2.12	1.93
3	A	503	KEG	W6-O36	2.63	2.03	1.93
2	A	501	URA	C4-N3	-2.63	1.33	1.38
3	A	503	KEG	W6-O24	2.57	2.02	1.93
3	A	503	KEG	W7-O43	2.53	2.02	1.93
3	A	502	KEG	W4-O26	2.46	2.10	1.93
3	A	502	KEG	W2-O26	2.41	2.09	1.93
3	A	502	KEG	W8-O30	2.29	2.08	1.93
3	A	502	KEG	W8-O34	2.25	2.08	1.93
3	A	503	KEG	W6-O40	2.14	2.08	1.93
3	A	502	KEG	W4-O34	2.14	2.08	1.93
3	A	502	KEG	W2-O30	2.14	2.07	1.93
2	A	501	URA	C5-C4	-2.13	1.38	1.43
3	A	502	KEG	W6-O40	2.10	2.07	1.93
3	A	503	KEG	W9-O35	2.05	2.00	1.93
3	A	503	KEG	W8-O41	2.03	2.00	1.93
3	A	503	KEG	W8-O30	2.01	2.07	1.93

All (6) bond angle outliers are listed below:

Mol	Chain	Res	Type	Atoms	Z	Observed(°)	Ideal(°)
2	A	501	URA	C4-N3-C2	-5.15	120.59	125.70
2	A	501	URA	N1-C2-N3	4.73	120.49	115.13
2	A	501	URA	C5-C4-N3	3.49	120.06	114.84
2	A	501	URA	O4-C4-C5	-3.12	119.68	125.16
2	A	501	URA	O2-C2-N1	-2.83	119.67	122.79
2	A	501	URA	C6-N1-C2	-2.21	121.05	122.40

There are no chirality outliers.

There are no torsion outliers.

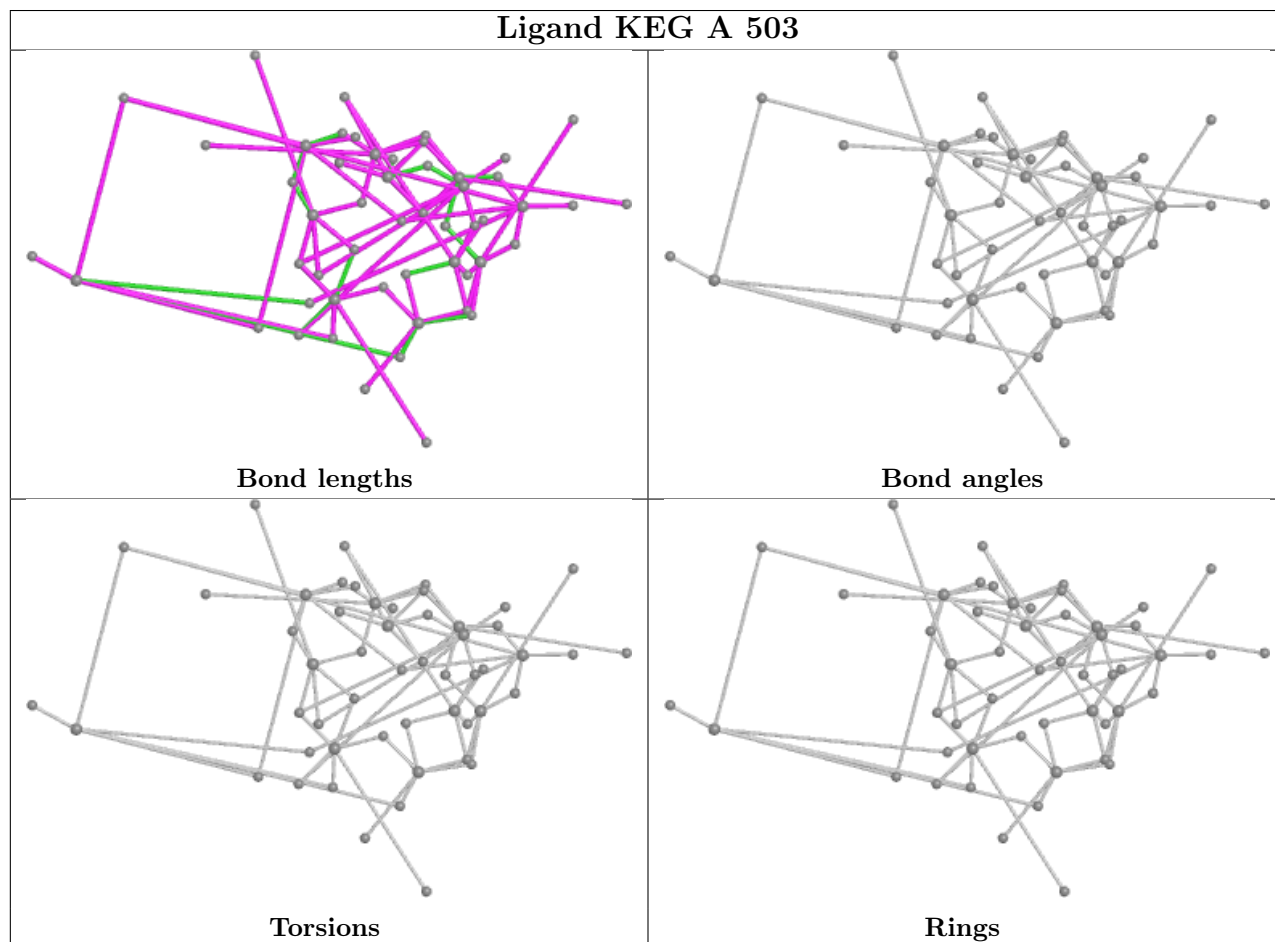
There are no ring outliers.

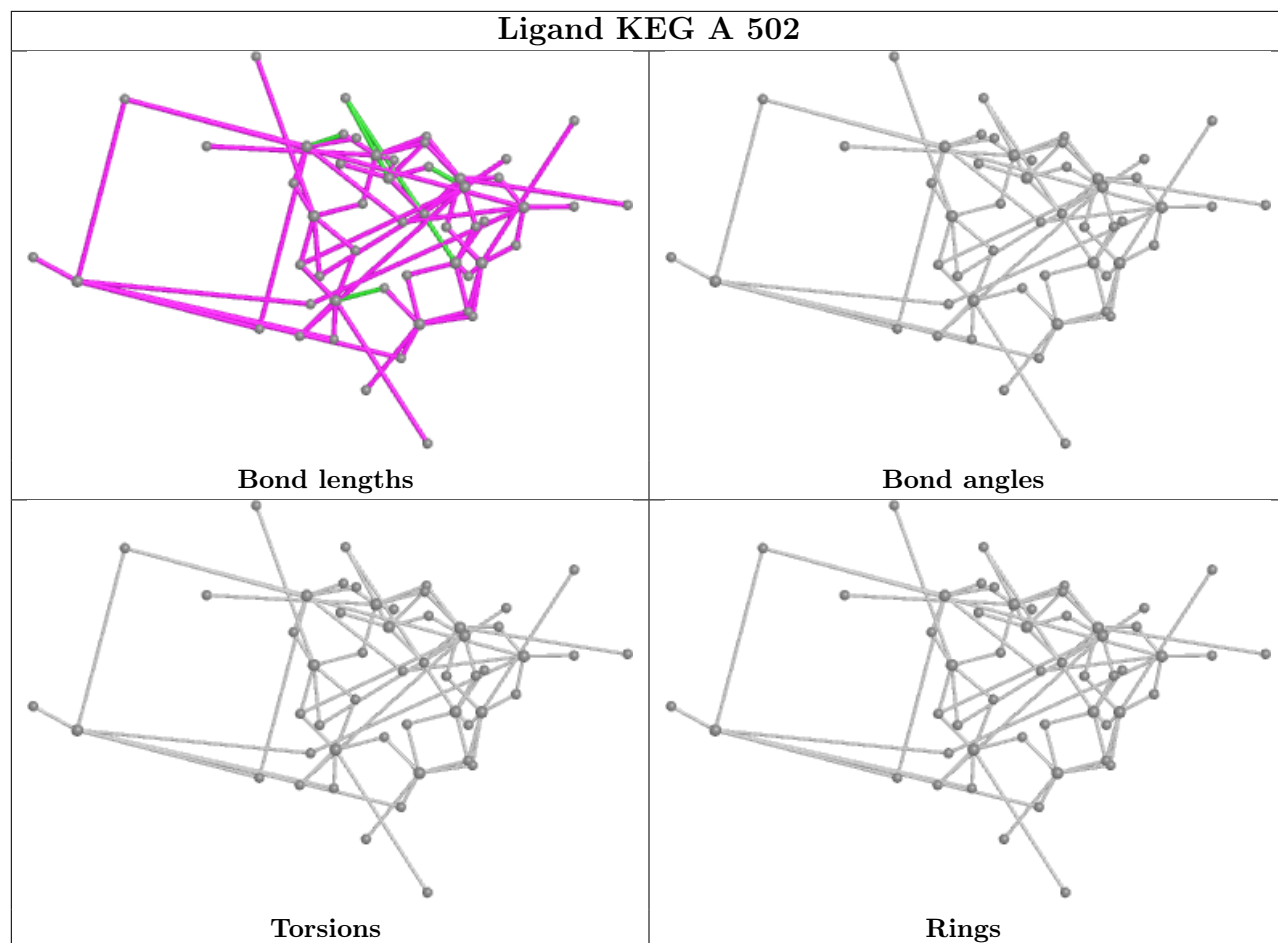
2 monomers are involved in 31 short contacts:

Mol	Chain	Res	Type	Clashes	Symm-Clashes
3	A	503	KEG	13	0
3	A	502	KEG	13	5

The following is a two-dimensional graphical depiction of Mogul quality analysis of bond lengths, bond angles, torsion angles, and ring geometry for all instances of the Ligand of Interest. In addition, ligands with molecular weight > 250 and outliers as shown on the validation Tables will

also be included. For torsion angles, if less than 5% of the Mogul distribution of torsion angles is within 10 degrees of the torsion angle in question, then that torsion angle is considered an outlier. Any bond that is central to one or more torsion angles identified as an outlier by Mogul will be highlighted in the graph. For rings, the root-mean-square deviation (RMSD) between the ring in question and similar rings identified by Mogul is calculated over all ring torsion angles. If the average RMSD is greater than 60 degrees and the minimal RMSD between the ring in question and any Mogul-identified rings is also greater than 60 degrees, then that ring is considered an outlier. The outliers are highlighted in purple. The color gray indicates Mogul did not find sufficient equivalents in the CSD to analyse the geometry.





5.7 Other polymers [i](#)

There are no such residues in this entry.

5.8 Polymer linkage issues [i](#)

There are no chain breaks in this entry.

6 Fit of model and data

6.1 Protein, DNA and RNA chains

In the following table, the column labelled ‘#RSRZ> 2’ contains the number (and percentage) of RSRZ outliers, followed by percent RSRZ outliers for the chain as percentile scores relative to all X-ray entries and entries of similar resolution. The OWAB column contains the minimum, median, 95th percentile and maximum values of the occupancy-weighted average B-factor per residue. The column labelled ‘Q< 0.9’ lists the number of (and percentage) of residues with an average occupancy less than 0.9.

Mol	Chain	Analysed	<RSRZ>	#RSRZ>2	OWAB(Å ²)	Q<0.9
1	A	408/435 (93%)	0.35	46 (11%) 5 4	26, 46, 88, 137	0

All (46) RSRZ outliers are listed below:

Mol	Chain	Res	Type	RSRZ
1	A	209	ASN	8.3
1	A	150	GLU	8.1
1	A	201	ILE	6.7
1	A	222	ARG	5.6
1	A	177	ARG	5.1
1	A	206	PRO	5.1
1	A	226	PHE	5.1
1	A	210	ALA	4.9
1	A	208	ILE	4.9
1	A	153	THR	4.9
1	A	212	TRP	4.8
1	A	225	TRP	4.5
1	A	178	GLY	4.4
1	A	149	ALA	4.3
1	A	329	ILE	4.2
1	A	412	LEU	4.1
1	A	254	LYS	4.0
1	A	181	ALA	3.6
1	A	154	PRO	3.5
1	A	224	GLU	3.5
1	A	152	GLN	3.4
1	A	223	PHE	3.4
1	A	261	PRO	3.3
1	A	259	ARG	3.2
1	A	384	ILE	3.1
1	A	267	MET	3.1
1	A	151	GLY	2.9

Continued on next page...

Continued from previous page...

Mol	Chain	Res	Type	RSRZ
1	A	106	PHE	2.8
1	A	175	LEU	2.8
1	A	386	ALA	2.8
1	A	89	VAL	2.5
1	A	218	LEU	2.5
1	A	220	THR	2.5
1	A	198	ALA	2.5
1	A	199	MET	2.4
1	A	383	ASN	2.3
1	A	148	PRO	2.2
1	A	59	PHE	2.2
1	A	111	ALA	2.2
1	A	205	THR	2.2
1	A	328	MET	2.1
1	A	101	PHE	2.1
1	A	176	PHE	2.1
1	A	87	TYR	2.1
1	A	182	ILE	2.1
1	A	180	LEU	2.1

6.2 Non-standard residues in protein, DNA, RNA chains [i](#)

There are no non-standard protein/DNA/RNA residues in this entry.

6.3 Carbohydrates [i](#)

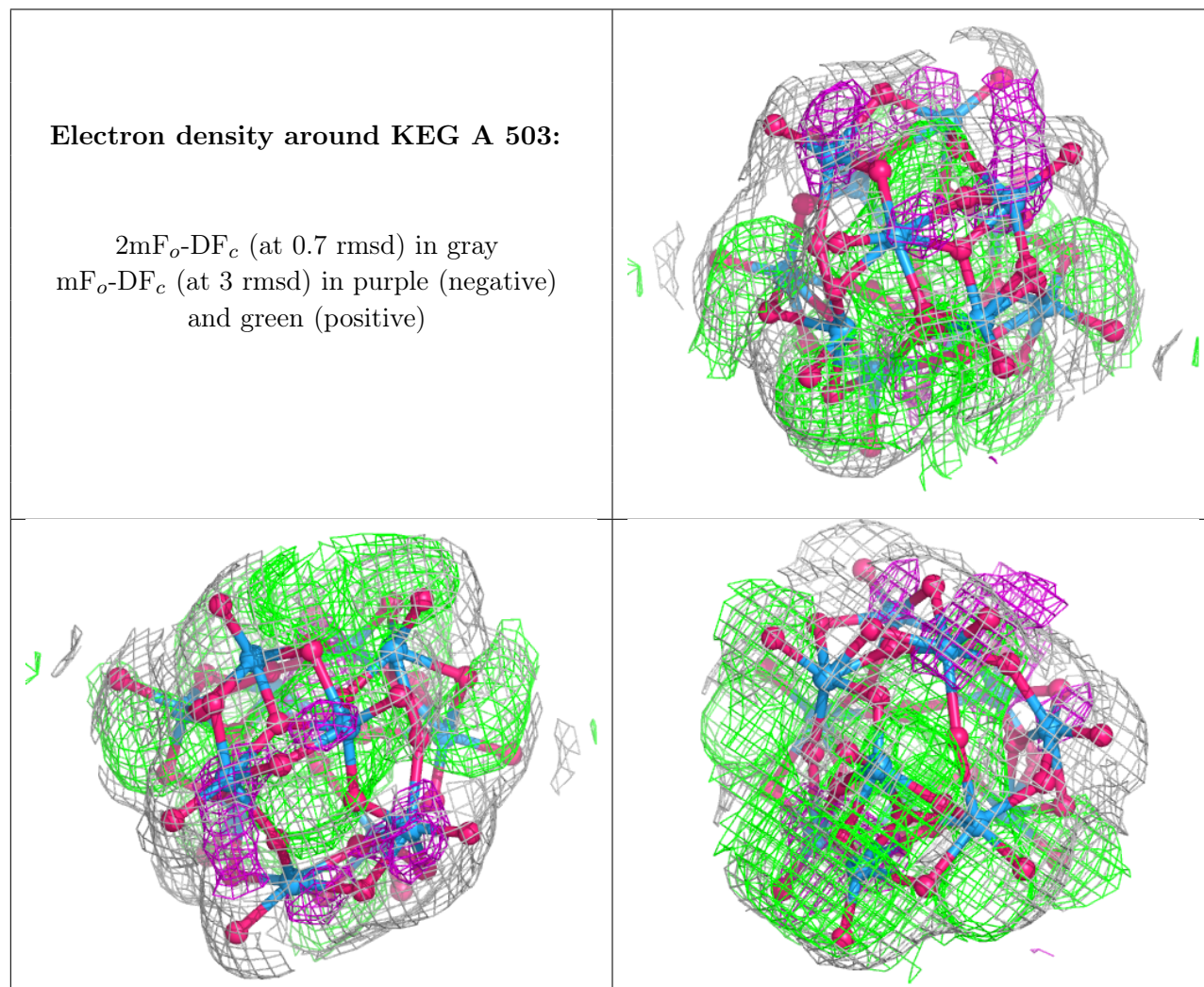
There are no monosaccharides in this entry.

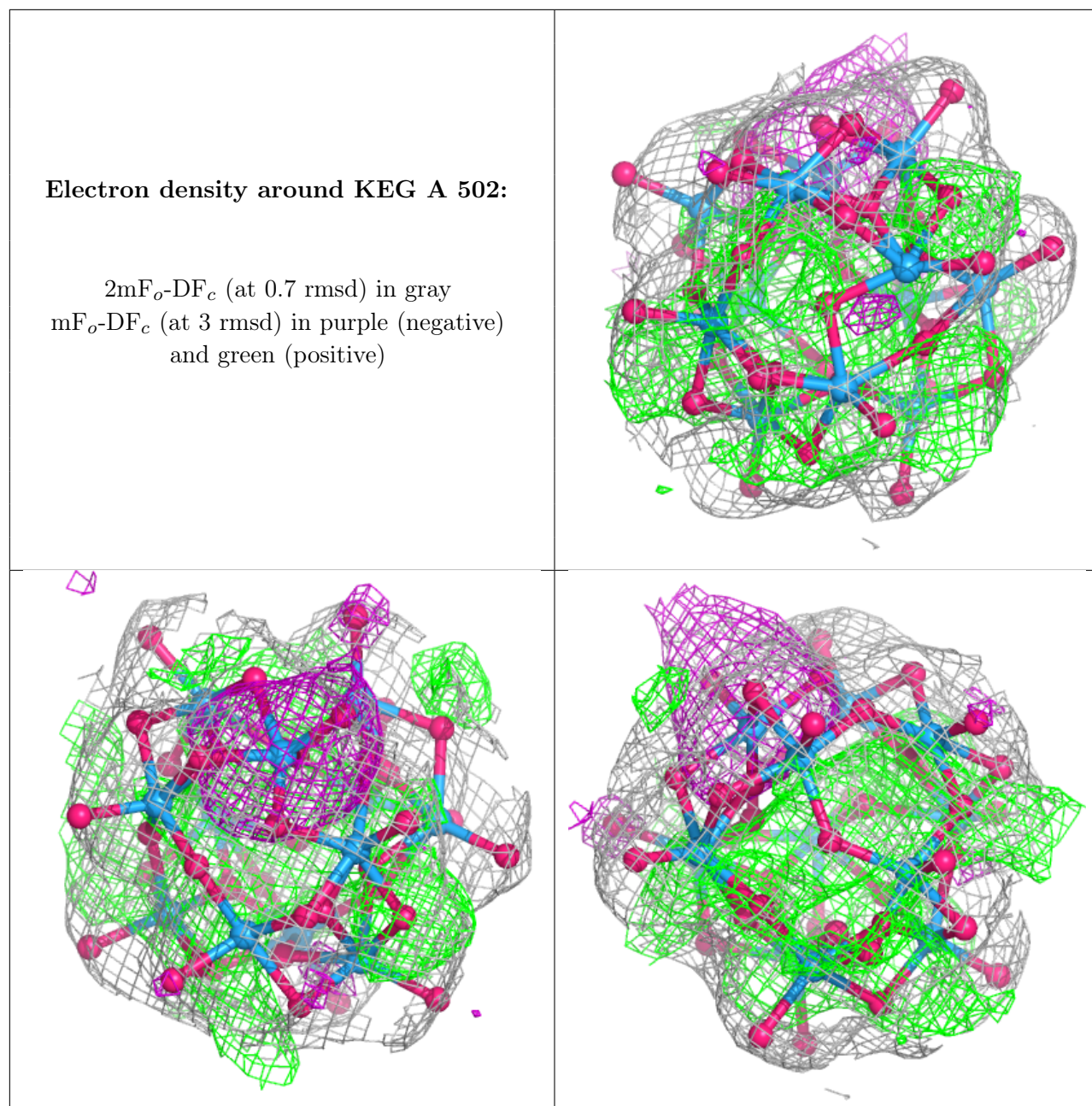
6.4 Ligands [i](#)

In the following table, the Atoms column lists the number of modelled atoms in the group and the number defined in the chemical component dictionary. The B-factors column lists the minimum, median, 95th percentile and maximum values of B factors of atoms in the group. The column labelled 'Q< 0.9' lists the number of atoms with occupancy less than 0.9.

Mol	Type	Chain	Res	Atoms	RSCC	RSR	B-factors(Å ²)	Q<0.9
3	KEG	A	503	52/53	0.96	0.09	69,80,91,93	52
3	KEG	A	502	52/53	0.97	0.12	47,55,63,83	0
2	URA	A	501	8/8	0.97	0.17	28,29,29,30	0

The following is a graphical depiction of the model fit to experimental electron density of all instances of the Ligand of Interest. In addition, ligands with molecular weight > 250 and outliers as shown on the geometry validation Tables will also be included. Each fit is shown from different orientation to approximate a three-dimensional view.





6.5 Other polymers [i](#)

There are no such residues in this entry.