



wwPDB X-ray Structure Validation Summary Report ⓘ

Oct 9, 2023 – 08:57 AM EDT

PDB ID : 6XL8
Title : Crystal structure of 3-O-Sulfotransferase isoform 3 in complex with 8mer oligosaccharide with no 6S sulfation
Authors : Pedersen, L.C.; Liu, J.; Wander, R.
Deposited on : 2020-06-28
Resolution : 2.34 Å(reported)

This is a wwPDB X-ray Structure Validation Summary Report for a publicly released PDB entry.

We welcome your comments at validation@mail.wwpdb.org

A user guide is available at

<https://www.wwpdb.org/validation/2017/XrayValidationReportHelp>

with specific help available everywhere you see the ⓘ symbol.

The types of validation reports are described at

<http://www.wwpdb.org/validation/2017/FAQs#types>.

The following versions of software and data (see [references ⓘ](#)) were used in the production of this report:

MolProbity : 4.02b-467
Mogul : 1.8.5 (274361), CSD as541be (2020)
Xtriage (Phenix) : 1.13
EDS : 2.35.1
buster-report : 1.1.7 (2018)
Percentile statistics : 20191225.v01 (using entries in the PDB archive December 25th 2019)
Refmac : 5.8.0158
CCP4 : 7.0.044 (Gargrove)
Ideal geometry (proteins) : Engh & Huber (2001)
Ideal geometry (DNA, RNA) : Parkinson et al. (1996)
Validation Pipeline (wwPDB-VP) : 2.35.1

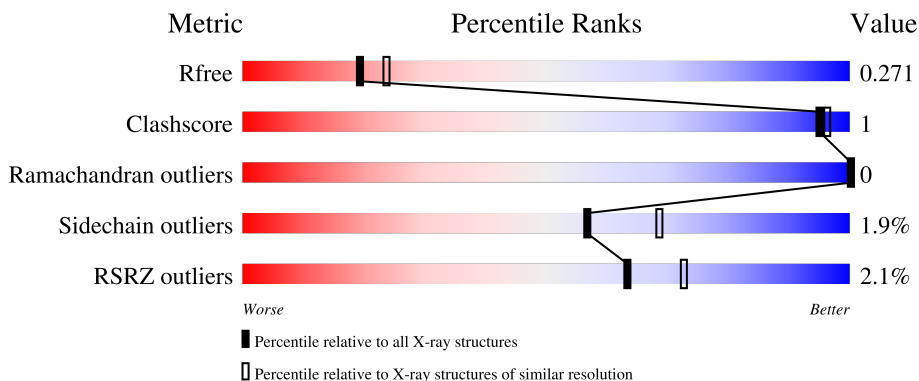
1 Overall quality at a glance

The following experimental techniques were used to determine the structure:

X-RAY DIFFRACTION

The reported resolution of this entry is 2.34 Å.

Percentile scores (ranging between 0-100) for global validation metrics of the entry are shown in the following graphic. The table shows the number of entries on which the scores are based.



Metric	Whole archive (#Entries)	Similar resolution (#Entries, resolution range(Å))
R_{free}	130704	2096 (2.36-2.32)
Clashscore	141614	2193 (2.36-2.32)
Ramachandran outliers	138981	2159 (2.36-2.32)
Sidechain outliers	138945	2160 (2.36-2.32)
RSRZ outliers	127900	2067 (2.36-2.32)

The table below summarises the geometric issues observed across the polymeric chains and their fit to the electron density. The red, orange, yellow and green segments of the lower bar indicate the fraction of residues that contain outliers for ≥ 3 , 2, 1 and 0 types of geometric quality criteria respectively. A grey segment represents the fraction of residues that are not modelled. The numeric value for each fraction is indicated below the corresponding segment, with a dot representing fractions $\leq 5\%$. The upper red bar (where present) indicates the fraction of residues that have poor fit to the electron density. The numeric value is given above the bar.

Mol	Chain	Length	Quality of chain
1	A	273	 3% (red), 91% (green), 5% (grey)
1	B	273	 % (red), 90% (green), 6% (grey)
2	C	6	 100% (yellow)
3	D	7	 14% (green), 86% (yellow)

2 Entry composition i

There are 8 unique types of molecules in this entry. The entry contains 4436 atoms, of which 0 are hydrogens and 0 are deuteriums.

In the tables below, the ZeroOcc column contains the number of atoms modelled with zero occupancy, the AltConf column contains the number of residues with at least one atom in alternate conformation and the Trace column contains the number of residues modelled with at most 2 atoms.

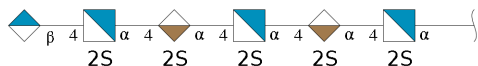
- Molecule 1 is a protein called Heparan sulfate glucosamine 3-O-sulfotransferase 3A1.

Mol	Chain	Residues	Atoms					ZeroOcc	AltConf	Trace
			Total	C	N	O	S			
1	A	258	Total	C	N	O	S	0	0	0
			2047	1316	362	362	7			
1	B	257	Total	C	N	O	S	0	0	0
			2062	1326	369	360	7			

There are 10 discrepancies between the modelled and reference sequences:

Chain	Residue	Modelled	Actual	Comment	Reference
A	134	GLY	-	expression tag	UNP Q9Y663
A	135	SER	-	expression tag	UNP Q9Y663
A	136	PRO	-	expression tag	UNP Q9Y663
A	137	ASN	-	expression tag	UNP Q9Y663
A	138	SER	-	expression tag	UNP Q9Y663
B	134	GLY	-	expression tag	UNP Q9Y663
B	135	SER	-	expression tag	UNP Q9Y663
B	136	PRO	-	expression tag	UNP Q9Y663
B	137	ASN	-	expression tag	UNP Q9Y663
B	138	SER	-	expression tag	UNP Q9Y663

- Molecule 2 is an oligosaccharide called beta-D-glucopyranuronic acid-(1-4)-2-deoxy-2-(sulfoamino)-alpha-D-glucopyranose-(1-4)-2-O-sulfo-alpha-L-idopyranuronic acid-(1-4)-2-deoxy-2-(sulfoamino)-alpha-D-glucopyranose-(1-4)-2-O-sulfo-alpha-L-idopyranuronic acid-(1-4)-2-deoxy-2-(sulfoamino)-alpha-D-glucopyranose.



Mol	Chain	Residues	Atoms					ZeroOcc	AltConf	Trace
			Total	C	N	O	S			
2	C	6	Total	C	N	O	S	0	0	0
			89	36	3	45	5			

- Molecule 3 is an oligosaccharide called beta-D-glucopyranuronic acid-(1-4)-2-deoxy-2-(sulfoamino)-alpha-D-glucopyranose-(1-4)-2-O-sulfo-alpha-L-idopyranuronic acid-(1-4)-2-deoxy-2-(sulfoamino)-alpha-D-glucopyranose-(1-4)-2-O-sulfo-alpha-L-idopyranuronic acid-(1-4)-2-deoxy-2-(sulfoamino)-alpha-D-glucopyranose-(1-4)-beta-D-glucopyranuronic acid.

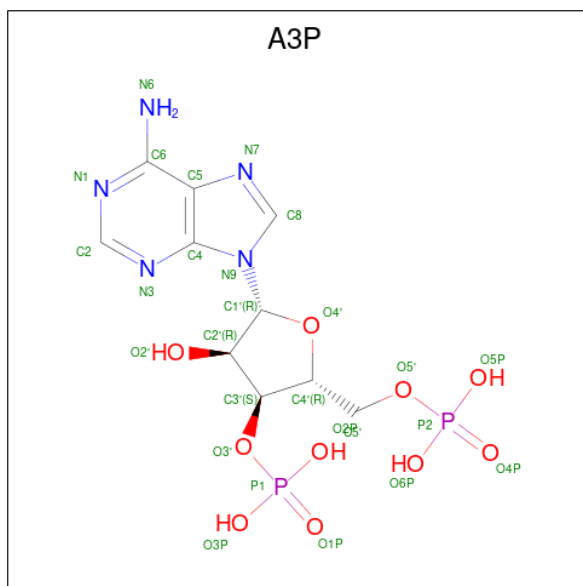


Mol	Chain	Residues	Atoms					ZeroOcc	AltConf	Trace
			Total	C	N	O	S			
3	D	7	101	42	3	51	5	0	0	0

- Molecule 4 is SODIUM ION (three-letter code: NA) (formula: Na).

Mol	Chain	Residues	Atoms		ZeroOcc	AltConf
			Total	Na		
4	A	1	1	1	0	0
4	B	1	1	1	0	0

- Molecule 5 is ADENOSINE-3'-5'-DIPHOSPHATE (three-letter code: A3P) (formula: C₁₀H₁₅N₅O₁₀P₂).



Mol	Chain	Residues	Atoms					ZeroOcc	AltConf
			Total	C	N	O	P		
5	A	1	27	10	5	10	2	0	0

Continued on next page...

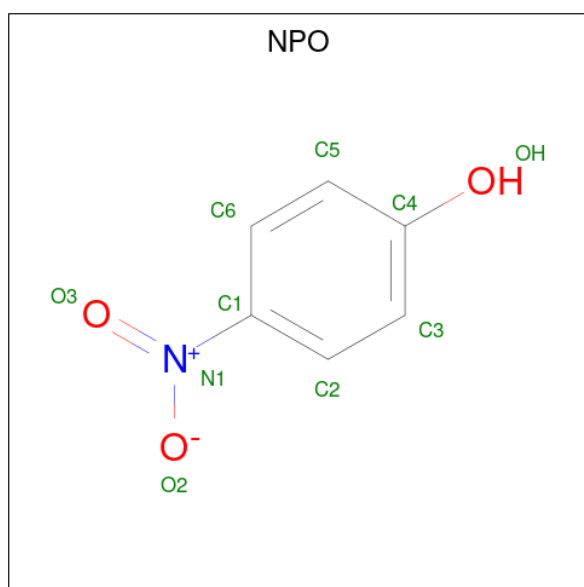
Continued from previous page...

Mol	Chain	Residues	Atoms					ZeroOcc	AltConf
			Total	C	N	O	P		
5	B	1	27	10	5	10	2	0	0

- Molecule 6 is IODIDE ION (three-letter code: IOD) (formula: I).

Mol	Chain	Residues	Atoms	ZeroOcc	AltConf
6	A	3	Total I 3 3	0	0
6	B	6	Total I 6 6	0	0

- Molecule 7 is P-NITROPHENOL (three-letter code: NPO) (formula: C₆H₅NO₃).



Mol	Chain	Residues	Atoms	ZeroOcc	AltConf
7	B	1	Total O 1 1	0	0

- Molecule 8 is water.

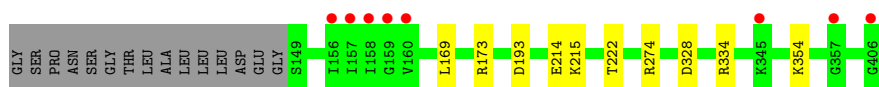
Mol	Chain	Residues	Atoms	ZeroOcc	AltConf
8	A	28	Total O 28 28	0	0
8	B	43	Total O 43 43	0	0

3 Residue-property plots [i](#)

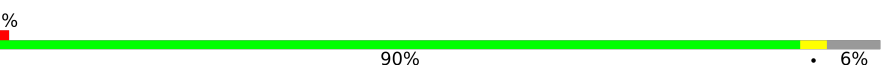
These plots are drawn for all protein, RNA, DNA and oligosaccharide chains in the entry. The first graphic for a chain summarises the proportions of the various outlier classes displayed in the second graphic. The second graphic shows the sequence view annotated by issues in geometry and electron density. Residues are color-coded according to the number of geometric quality criteria for which they contain at least one outlier: green = 0, yellow = 1, orange = 2 and red = 3 or more. A red dot above a residue indicates a poor fit to the electron density ($RSRZ > 2$). Stretches of 2 or more consecutive residues without any outlier are shown as a green connector. Residues present in the sample, but not in the model, are shown in grey.

- Molecule 1: Heparan sulfate glucosamine 3-O-sulfotransferase 3A1

Chain A: 



- Molecule 1: Heparan sulfate glucosamine 3-O-sulfotransferase 3A1

Chain B: 



- Molecule 2: beta-D-glucopyranuronic acid-(1-4)-2-deoxy-2-(sulfoamino)-alpha-D-glucopyranose-(1-4)-2-O-sulfo-alpha-L-idopyranuronic acid-(1-4)-2-deoxy-2-(sulfoamino)-alpha-D-glucopyranose-(1-4)-2-O-sulfo-alpha-L-idopyranuronic acid-(1-4)-2-deoxy-2-(sulfoamino)-alpha-D-glucopyranose

Chain C: 



- Molecule 3: beta-D-glucopyranuronic acid-(1-4)-2-deoxy-2-(sulfoamino)-alpha-D-glucopyranose-(1-4)-2-O-sulfo-alpha-L-idopyranuronic acid-(1-4)-2-deoxy-2-(sulfoamino)-alpha-D-glucopyranose-(1-4)-2-O-sulfo-alpha-L-idopyranuronic acid-(1-4)-2-deoxy-2-(sulfoamino)-alpha-D-glucopyranose-(1-4)-beta-D-glucopyranuronic acid

Chain D: 



4 Data and refinement statistics

Property	Value	Source
Space group	P 1 21 1	Depositor
Cell constants a, b, c, α , β , γ	38.22Å 147.47Å 51.04Å 90.00° 94.35° 90.00°	Depositor
Resolution (Å)	21.70 – 2.34 21.70 – 2.34	Depositor EDS
% Data completeness (in resolution range)	94.3 (21.70-2.34) 86.3 (21.70-2.34)	Depositor EDS
R_{merge}	(Not available)	Depositor
R_{sym}	0.14	Depositor
$\langle I/\sigma(I) \rangle$ ¹	2.48 (at 2.33Å)	Xtrriage
Refinement program	PHENIX 1.19.1_4122, PHENIX 1.19.1_4122	Depositor
R, R_{free}	0.216 , 0.271 0.216 , 0.271	Depositor DCC
R_{free} test set	1116 reflections (4.97%)	wwPDB-VP
Wilson B-factor (Å ²)	33.7	Xtrriage
Anisotropy	0.272	Xtrriage
Bulk solvent k_{sol} (e/Å ³), B_{sol} (Å ²)	0.35 , 37.4	EDS
L-test for twinning ²	$\langle L \rangle = 0.46$, $\langle L^2 \rangle = 0.29$	Xtrriage
Estimated twinning fraction	No twinning to report.	Xtrriage
F_o, F_c correlation	0.92	EDS
Total number of atoms	4436	wwPDB-VP
Average B, all atoms (Å ²)	40.0	wwPDB-VP

Xtrriage's analysis on translational NCS is as follows: *The largest off-origin peak in the Patterson function is 5.74% of the height of the origin peak. No significant pseudotranslation is detected.*

¹Intensities estimated from amplitudes.

²Theoretical values of $\langle |L| \rangle$, $\langle L^2 \rangle$ for acentric reflections are 0.5, 0.333 respectively for untwinned datasets, and 0.375, 0.2 for perfectly twinned datasets.

5 Model quality

5.1 Standard geometry

Bond lengths and bond angles in the following residue types are not validated in this section: GNS, IOD, NA, NPO, IDS, BDP, A3P

The Z score for a bond length (or angle) is the number of standard deviations the observed value is removed from the expected value. A bond length (or angle) with $|Z| > 5$ is considered an outlier worth inspection. RMSZ is the root-mean-square of all Z scores of the bond lengths (or angles).

Mol	Chain	Bond lengths		Bond angles	
		RMSZ	# Z >5	RMSZ	# Z >5
1	A	0.26	0/2102	0.44	0/2846
1	B	0.25	0/2117	0.43	0/2863
All	All	0.26	0/4219	0.44	0/5709

There are no bond length outliers.

There are no bond angle outliers.

There are no chirality outliers.

There are no planarity outliers.

5.2 Too-close contacts

In the following table, the Non-H and H(model) columns list the number of non-hydrogen atoms and hydrogen atoms in the chain respectively. The H(added) column lists the number of hydrogen atoms added and optimized by MolProbity. The Clashes column lists the number of clashes within the asymmetric unit, whereas Symm-Clashes lists symmetry-related clashes.

Mol	Chain	Non-H	H(model)	H(added)	Clashes	Symm-Clashes
1	A	2047	0	2009	5	0
1	B	2062	0	2050	5	0
2	C	89	0	38	0	0
3	D	101	0	44	0	0
4	A	1	0	0	0	0
4	B	1	0	0	0	0
5	A	27	0	11	1	0
5	B	27	0	11	1	0
6	A	3	0	0	0	0
6	B	6	0	0	0	0
7	B	1	0	0	0	0

Continued on next page...

Continued from previous page...

Mol	Chain	Non-H	H(model)	H(added)	Clashes	Symm-Clashes
8	A	28	0	0	0	0
8	B	43	0	0	0	0
All	All	4436	0	4163	10	0

The all-atom clashscore is defined as the number of clashes found per 1000 atoms (including hydrogen atoms). The all-atom clashscore for this structure is 1.

The worst 5 of 10 close contacts within the same asymmetric unit are listed below, sorted by their clash magnitude.

Atom-1	Atom-2	Interatomic distance (Å)	Clash overlap (Å)
1:B:170:GLU:OE2	1:B:173:ARG:NH1	2.40	0.55
1:B:328:ASP:OD2	1:B:334:ARG:NH2	2.39	0.51
1:A:354:LYS:NZ	1:B:173:ARG:O	2.46	0.48
1:A:354:LYS:NZ	1:B:178:VAL:O	2.47	0.47
1:A:169:LEU:O	1:A:173:ARG:HG3	2.16	0.45

There are no symmetry-related clashes.

5.3 Torsion angles [i](#)

5.3.1 Protein backbone [i](#)

In the following table, the Percentiles column shows the percent Ramachandran outliers of the chain as a percentile score with respect to all X-ray entries followed by that with respect to entries of similar resolution.

The Analysed column shows the number of residues for which the backbone conformation was analysed, and the total number of residues.

Mol	Chain	Analysed	Favoured	Allowed	Outliers	Percentiles	
1	A	256/273 (94%)	249 (97%)	7 (3%)	0	100	100
1	B	255/273 (93%)	249 (98%)	6 (2%)	0	100	100
All	All	511/546 (94%)	498 (98%)	13 (2%)	0	100	100

There are no Ramachandran outliers to report.

5.3.2 Protein sidechains [i](#)

In the following table, the Percentiles column shows the percent sidechain outliers of the chain as a percentile score with respect to all X-ray entries followed by that with respect to entries of similar resolution.

The Analysed column shows the number of residues for which the sidechain conformation was analysed, and the total number of residues.

Mol	Chain	Analysed	Rotameric	Outliers	Percentiles	
1	A	213/236 (90%)	209 (98%)	4 (2%)	57	68
1	B	217/236 (92%)	213 (98%)	4 (2%)	59	70
All	All	430/472 (91%)	422 (98%)	8 (2%)	57	68

5 of 8 residues with a non-rotameric sidechain are listed below:

Mol	Chain	Res	Type
1	B	377	ARG
1	B	215	LYS
1	B	173	ARG
1	A	274	ARG
1	B	214	GLU

Sometimes sidechains can be flipped to improve hydrogen bonding and reduce clashes. There are no such sidechains identified.

5.3.3 RNA [i](#)

There are no RNA molecules in this entry.

5.4 Non-standard residues in protein, DNA, RNA chains [i](#)

There are no non-standard protein/DNA/RNA residues in this entry.

5.5 Carbohydrates [i](#)

13 monosaccharides are modelled in this entry.

In the following table, the Counts columns list the number of bonds (or angles) for which Mogul statistics could be retrieved, the number of bonds (or angles) that are observed in the model and the number of bonds (or angles) that are defined in the Chemical Component Dictionary. The Link column lists molecule types, if any, to which the group is linked. The Z score for a bond length (or angle) is the number of standard deviations the observed value is removed from the

expected value. A bond length (or angle) with $|Z| > 2$ is considered an outlier worth inspection. RMSZ is the root-mean-square of all Z scores of the bond lengths (or angles).

Mol	Type	Chain	Res	Link	Bond lengths			Bond angles		
					Counts	RMSZ	# $ Z > 2$	Counts	RMSZ	# $ Z > 2$
2	GNS	C	1	2,4	14,15,16	1.48	2 (14%)	17,22,24	1.92	3 (17%)
2	IDS	C	2	2,4	16,16,17	0.70	0	17,24,26	1.30	1 (5%)
2	GNS	C	3	2	14,15,16	1.39	2 (14%)	17,22,24	1.71	4 (23%)
2	IDS	C	4	2	16,16,17	0.85	0	17,24,26	1.13	2 (11%)
2	GNS	C	5	2	14,15,16	1.18	2 (14%)	17,22,24	1.56	3 (17%)
2	BDP	C	6	2	12,12,13	0.81	0	14,17,19	1.08	1 (7%)
3	BDP	D	1	3,7	12,12,13	0.77	0	14,17,19	1.23	1 (7%)
3	GNS	D	2	3,4	14,15,16	0.79	0	17,22,24	1.86	4 (23%)
3	IDS	D	3	3,4	16,16,17	0.89	0	17,24,26	1.00	0
3	GNS	D	4	3	14,15,16	0.83	0	17,22,24	1.49	2 (11%)
3	IDS	D	5	3	16,16,17	0.87	1 (6%)	17,24,26	1.25	2 (11%)
3	GNS	D	6	3	14,15,16	1.08	2 (14%)	17,22,24	1.99	3 (17%)
3	BDP	D	7	3	12,12,13	1.05	2 (16%)	14,17,19	1.41	2 (14%)

In the following table, the Chirals column lists the number of chiral outliers, the number of chiral centers analysed, the number of these observed in the model and the number defined in the Chemical Component Dictionary. Similar counts are reported in the Torsion and Rings columns. '-' means no outliers of that kind were identified.

Mol	Type	Chain	Res	Link	Chirals	Torsions	Rings
2	GNS	C	1	2,4	-	1/7/24/27	0/1/1/1
2	IDS	C	2	2,4	-	0/9/26/29	0/1/1/1
2	GNS	C	3	2	-	1/7/24/27	0/1/1/1
2	IDS	C	4	2	-	3/9/26/29	0/1/1/1
2	GNS	C	5	2	-	4/7/24/27	0/1/1/1
2	BDP	C	6	2	-	2/4/21/24	0/1/1/1
3	BDP	D	1	3,7	-	0/4/21/24	0/1/1/1
3	GNS	D	2	3,4	-	0/7/24/27	0/1/1/1
3	IDS	D	3	3,4	-	0/9/26/29	0/1/1/1
3	GNS	D	4	3	-	3/7/24/27	0/1/1/1
3	IDS	D	5	3	-	3/9/26/29	0/1/1/1
3	GNS	D	6	3	-	0/7/24/27	0/1/1/1
3	BDP	D	7	3	-	0/4/21/24	0/1/1/1

The worst 5 of 11 bond length outliers are listed below:

Mol	Chain	Res	Type	Atoms	Z	Observed(Å)	Ideal(Å)
2	C	1	GNS	O3S-S1	3.94	1.46	1.42
2	C	3	GNS	O2S-S1	3.09	1.45	1.42
2	C	1	GNS	O2S-S1	2.91	1.45	1.42
2	C	3	GNS	C2-N2	-2.85	1.43	1.47
2	C	5	GNS	O2S-S1	2.73	1.45	1.42

The worst 5 of 28 bond angle outliers are listed below:

Mol	Chain	Res	Type	Atoms	Z	Observed(°)	Ideal(°)
2	C	1	GNS	O5-C1-C2	-5.27	102.96	111.29
3	D	6	GNS	O2S-S1-O3S	-4.95	108.45	120.16
3	D	2	GNS	O2S-S1-O3S	-4.77	108.88	120.16
2	C	5	GNS	O2S-S1-O3S	-4.57	109.36	120.16
2	C	3	GNS	O2S-S1-O3S	-4.49	109.54	120.16

There are no chirality outliers.

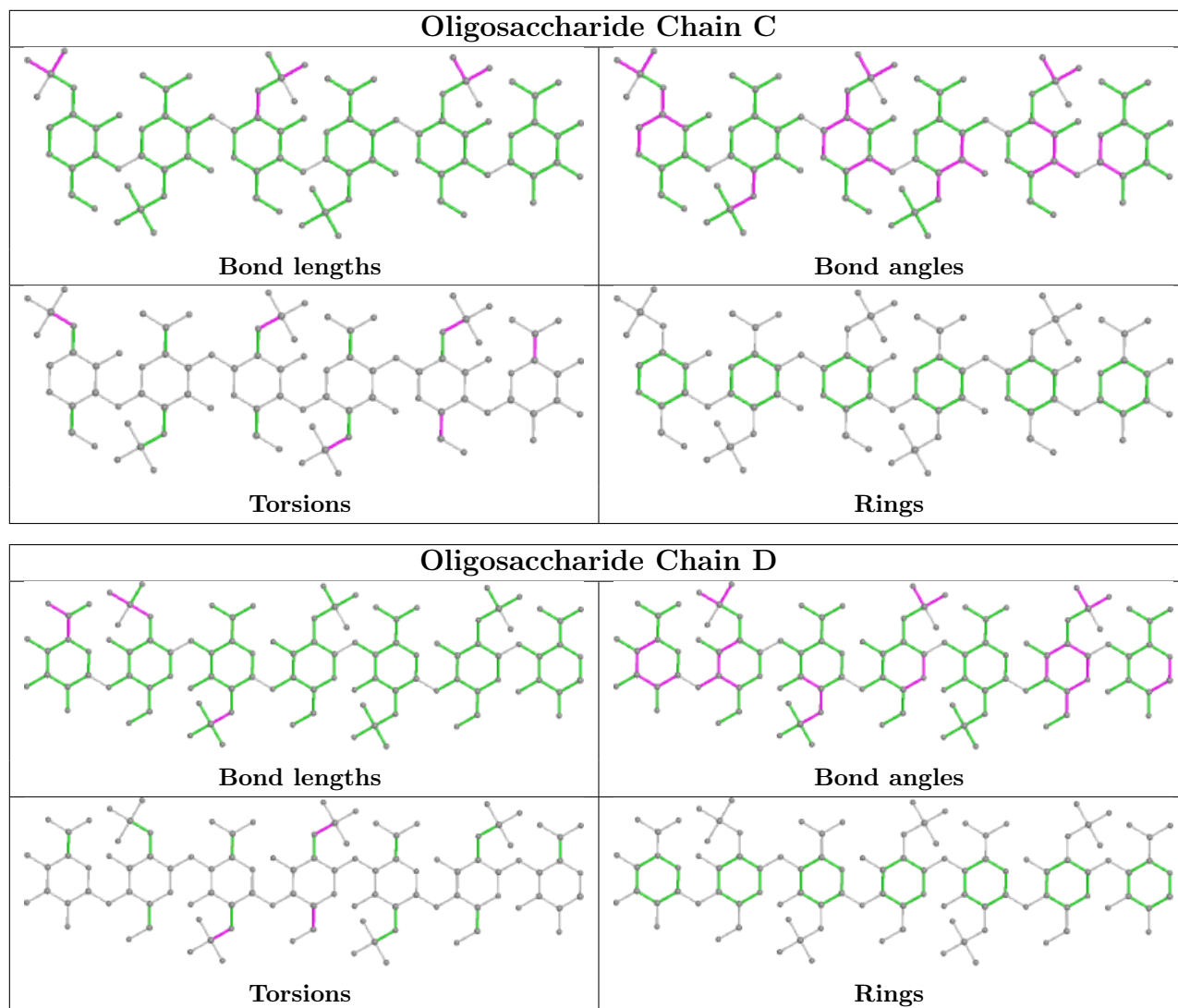
5 of 17 torsion outliers are listed below:

Mol	Chain	Res	Type	Atoms
2	C	4	IDS	C2-O2-S-O2S
2	C	4	IDS	C2-O2-S-O3S
2	C	5	GNS	C2-N2-S1-O1S
3	D	5	IDS	C2-O2-S-O2S
3	D	5	IDS	C2-O2-S-O3S

There are no ring outliers.

No monomer is involved in short contacts.

The following is a two-dimensional graphical depiction of Mogul quality analysis of bond lengths, bond angles, torsion angles, and ring geometry for oligosaccharide.



5.6 Ligand geometry [i](#)

Of 14 ligands modelled in this entry, 11 are monoatomic and 1 is modelled with single atom - leaving 2 for Mogul analysis.

In the following table, the Counts columns list the number of bonds (or angles) for which Mogul statistics could be retrieved, the number of bonds (or angles) that are observed in the model and the number of bonds (or angles) that are defined in the Chemical Component Dictionary. The Link column lists molecule types, if any, to which the group is linked. The Z score for a bond length (or angle) is the number of standard deviations the observed value is removed from the expected value. A bond length (or angle) with $|Z| > 2$ is considered an outlier worth inspection. RMSZ is the root-mean-square of all Z scores of the bond lengths (or angles).

Mol	Type	Chain	Res	Link	Bond lengths			Bond angles		
					Counts	RMSZ	# Z > 2	Counts	RMSZ	# Z > 2
5	A3P	A	502	-	26,29,29	0.65	0	31,45,45	1.01	3 (9%)
5	A3P	B	503	-	26,29,29	0.74	0	31,45,45	1.02	1 (3%)

In the following table, the Chirals column lists the number of chiral outliers, the number of chiral centers analysed, the number of these observed in the model and the number defined in the Chemical Component Dictionary. Similar counts are reported in the Torsion and Rings columns. '-' means no outliers of that kind were identified.

Mol	Type	Chain	Res	Link	Chirals	Torsions	Rings
5	A3P	A	502	-	-	2/11/31/31	0/3/3/3
5	A3P	B	503	-	-	4/11/31/31	0/3/3/3

There are no bond length outliers.

All (4) bond angle outliers are listed below:

Mol	Chain	Res	Type	Atoms	Z	Observed(°)	Ideal(°)
5	A	502	A3P	O5'-P2-O4P	2.42	113.26	106.47
5	A	502	A3P	C5-C6-N6	2.28	123.82	120.35
5	B	503	A3P	C5-C6-N6	2.23	123.75	120.35
5	A	502	A3P	C3'-C2'-C1'	2.08	104.51	99.89

There are no chirality outliers.

5 of 6 torsion outliers are listed below:

Mol	Chain	Res	Type	Atoms
5	B	503	A3P	C2'-C3'-O3'-P1
5	A	502	A3P	C4'-C3'-O3'-P1
5	A	502	A3P	C2'-C3'-O3'-P1
5	B	503	A3P	C4'-C3'-O3'-P1
5	B	503	A3P	C3'-O3'-P1-O1P

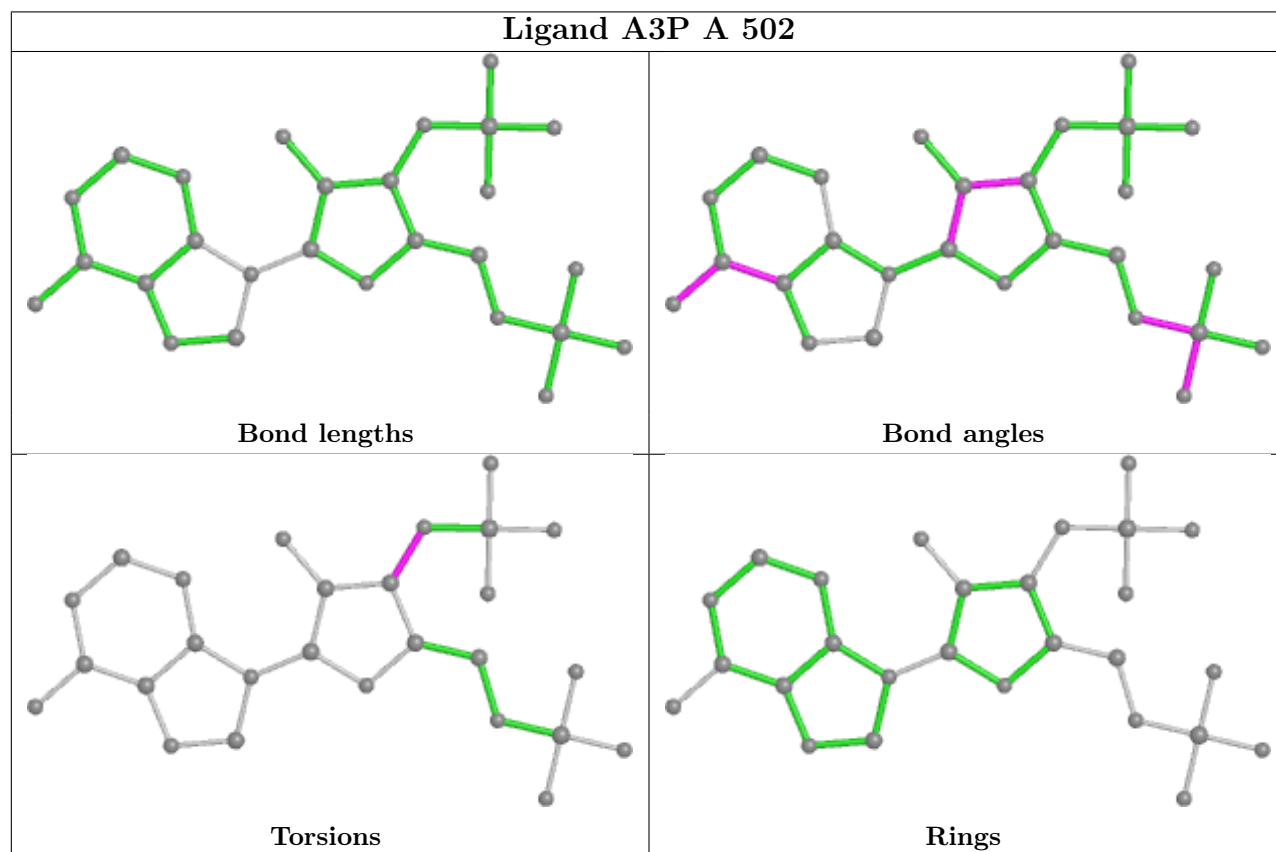
There are no ring outliers.

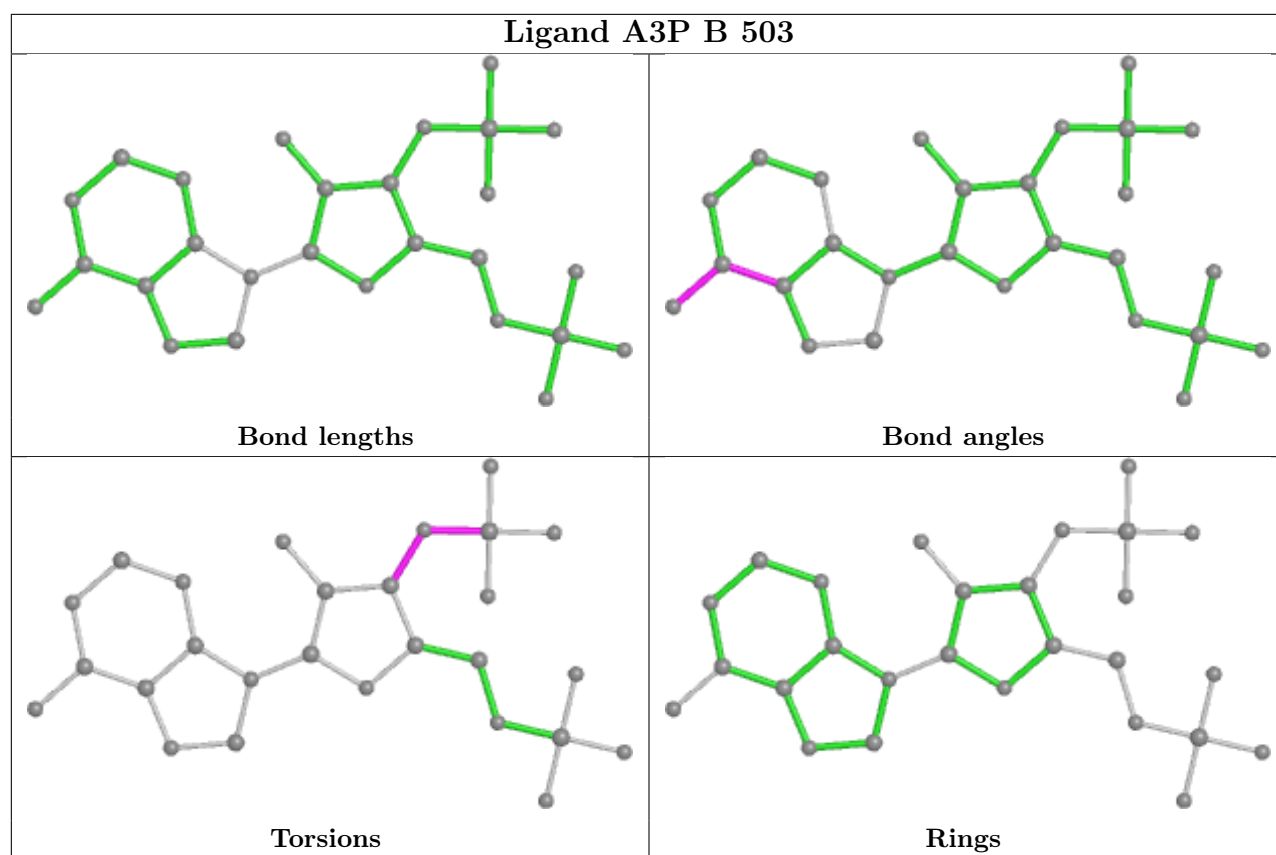
2 monomers are involved in 2 short contacts:

Mol	Chain	Res	Type	Clashes	Symm-Clashes
5	A	502	A3P	1	0
5	B	503	A3P	1	0

The following is a two-dimensional graphical depiction of Mogul quality analysis of bond lengths, bond angles, torsion angles, and ring geometry for all instances of the Ligand of Interest. In addition, ligands with molecular weight > 250 and outliers as shown on the validation Tables will also be included. For torsion angles, if less than 5% of the Mogul distribution of torsion angles is within 10 degrees of the torsion angle in question, then that torsion angle is considered an outlier. Any bond that is central to one or more torsion angles identified as an outlier by Mogul will be highlighted in the graph. For rings, the root-mean-square deviation (RMSD) between the ring in question and similar rings identified by Mogul is calculated over all ring torsion angles. If the

average RMSD is greater than 60 degrees and the minimal RMSD between the ring in question and any Mogul-identified rings is also greater than 60 degrees, then that ring is considered an outlier. The outliers are highlighted in purple. The color gray indicates Mogul did not find sufficient equivalents in the CSD to analyse the geometry.





5.7 Other polymers [i](#)

There are no such residues in this entry.

5.8 Polymer linkage issues [i](#)

There are no chain breaks in this entry.

6 Fit of model and data [i](#)

6.1 Protein, DNA and RNA chains [i](#)

In the following table, the column labelled ‘#RSRZ > 2’ contains the number (and percentage) of RSRZ outliers, followed by percent RSRZ outliers for the chain as percentile scores relative to all X-ray entries and entries of similar resolution. The OWAB column contains the minimum, median, 95th percentile and maximum values of the occupancy-weighted average B-factor per residue. The column labelled ‘Q < 0.9’ lists the number of (and percentage) of residues with an average occupancy less than 0.9.

Mol	Chain	Analysed	<RSRZ>	#RSRZ>2	OWAB(Å ²)	Q<0.9
1	A	258/273 (94%)	0.31	8 (3%) 49 59	31, 40, 51, 71	0
1	B	257/273 (94%)	0.21	3 (1%) 79 85	28, 38, 54, 71	0
All	All	515/546 (94%)	0.26	11 (2%) 63 73	28, 39, 53, 71	0

The worst 5 of 11 RSRZ outliers are listed below:

Mol	Chain	Res	Type	RSRZ
1	B	275	THR	4.8
1	A	406	GLY	4.2
1	A	357	GLY	3.0
1	A	156	ILE	3.0
1	A	157	ILE	2.9

6.2 Non-standard residues in protein, DNA, RNA chains [i](#)

There are no non-standard protein/DNA/RNA residues in this entry.

6.3 Carbohydrates [i](#)

In the following table, the Atoms column lists the number of modelled atoms in the group and the number defined in the chemical component dictionary. The B-factors column lists the minimum, median, 95th percentile and maximum values of B factors of atoms in the group. The column labelled ‘Q < 0.9’ lists the number of atoms with occupancy less than 0.9.

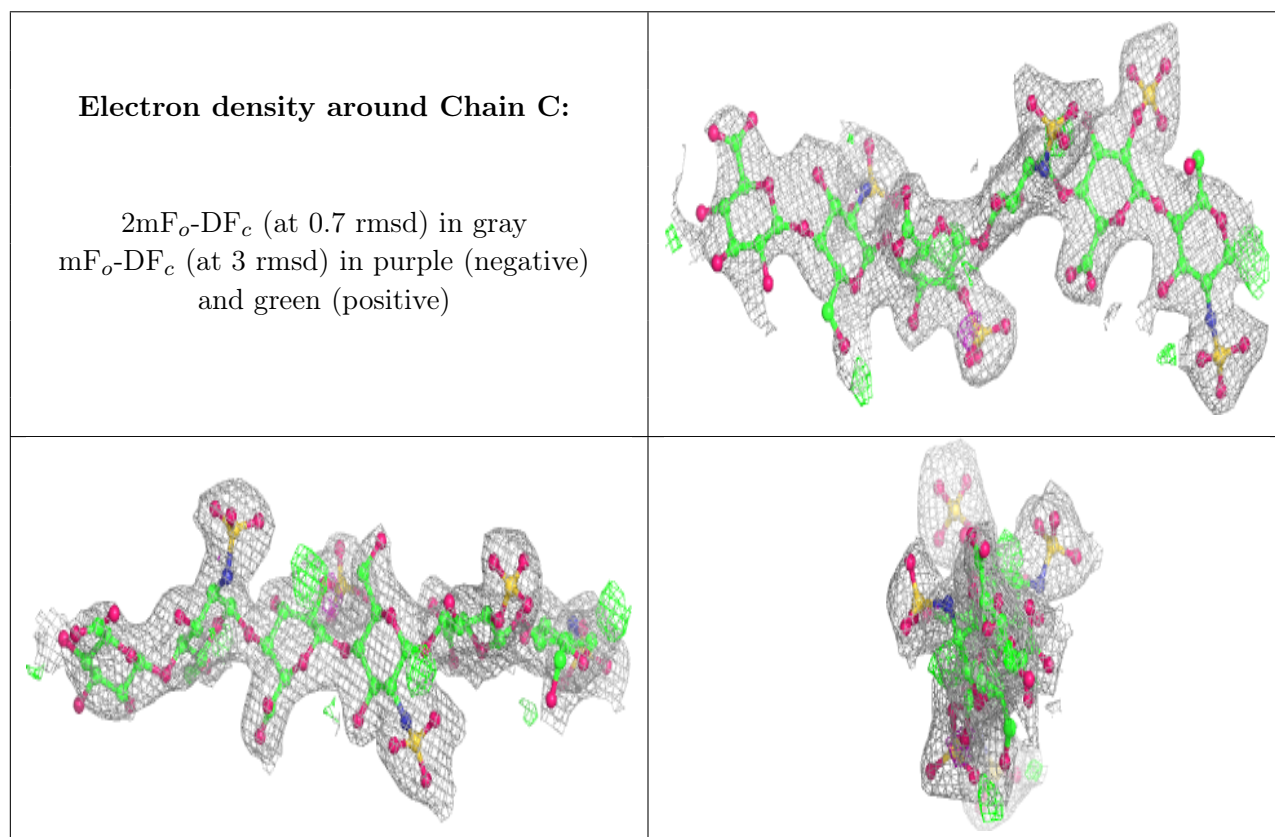
Mol	Type	Chain	Res	Atoms	RSCC	RSR	B-factors(Å ²)	Q<0.9
2	BDP	C	6	12/13	0.77	0.36	60,65,68,74	0
2	GNS	C	5	15/16	0.80	0.22	51,60,69,75	0
2	GNS	C	1	15/16	0.85	0.18	48,51,58,61	0
3	BDP	D	7	12/13	0.85	0.28	47,49,54,59	0
3	IDS	D	3	16/17	0.90	0.15	36,40,50,61	0

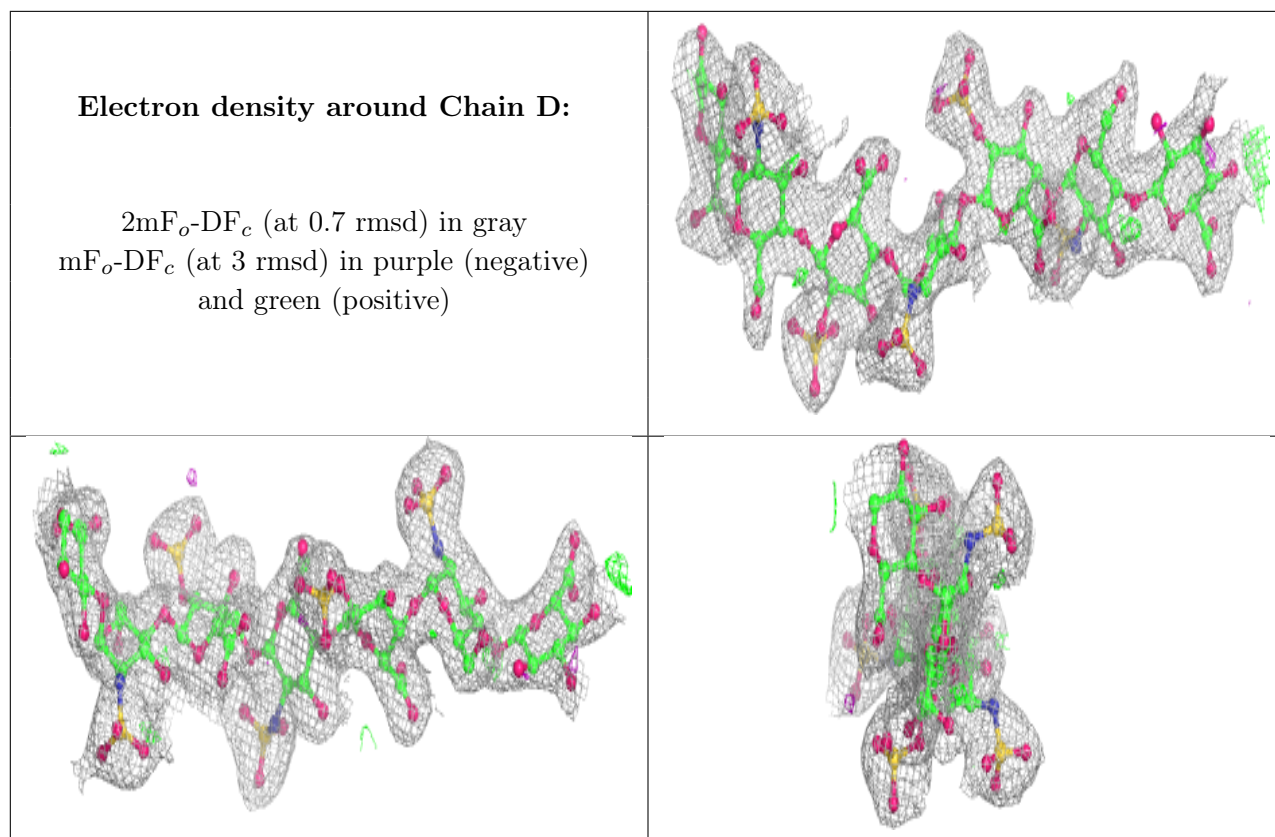
Continued on next page...

Continued from previous page...

Mol	Type	Chain	Res	Atoms	RSCC	RSR	B-factors(\AA^2)	Q<0.9
3	BDP	D	1	12/13	0.91	0.14	42,45,49,52	0
3	GNS	D	6	15/16	0.92	0.12	37,40,48,49	0
2	IDS	C	4	16/17	0.92	0.14	43,48,57,58	0
2	IDS	C	2	16/17	0.93	0.14	41,47,53,54	0
3	GNS	D	2	15/16	0.94	0.13	38,42,45,46	0
2	GNS	C	3	15/16	0.96	0.13	35,41,44,52	0
3	IDS	D	5	16/17	0.96	0.10	34,38,46,48	0
3	GNS	D	4	15/16	0.97	0.11	33,36,40,49	0

The following is a graphical depiction of the model fit to experimental electron density for oligosaccharide. Each fit is shown from different orientation to approximate a three-dimensional view.





6.4 Ligands [i](#)

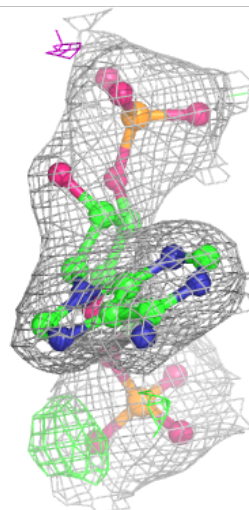
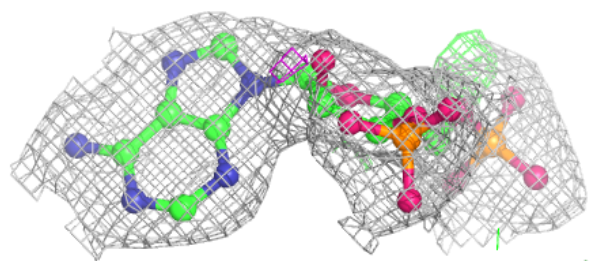
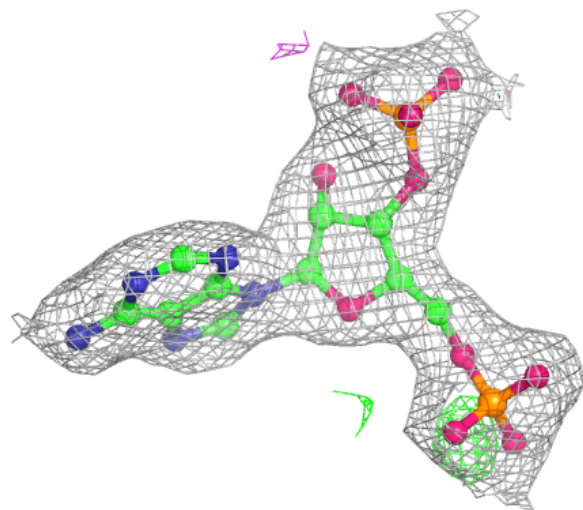
In the following table, the Atoms column lists the number of modelled atoms in the group and the number defined in the chemical component dictionary. The B-factors column lists the minimum, median, 95th percentile and maximum values of B factors of atoms in the group. The column labelled 'Q< 0.9' lists the number of atoms with occupancy less than 0.9.

Mol	Type	Chain	Res	Atoms	RSCC	RSR	B-factors(Å ²)	Q<0.9
7	NPO	B	502	1/10	0.81	0.17	43,43,43,43	0
4	NA	A	501	1/1	0.88	0.12	43,43,43,43	0
6	IOD	A	505	1/1	0.89	0.05	75,75,75,75	1
6	IOD	A	503	1/1	0.94	0.04	65,65,65,65	1
4	NA	B	501	1/1	0.96	0.16	26,26,26,26	0
5	A3P	A	502	27/27	0.96	0.12	29,36,39,39	0
5	A3P	B	503	27/27	0.96	0.11	28,32,40,41	0
6	IOD	B	507	1/1	0.97	0.07	63,63,63,63	1
6	IOD	B	508	1/1	0.98	0.04	59,59,59,59	1
6	IOD	B	505	1/1	0.98	0.04	54,54,54,54	1
6	IOD	B	504	1/1	0.99	0.05	49,49,49,49	1
6	IOD	A	504	1/1	0.99	0.04	59,59,59,59	1
6	IOD	B	509	1/1	0.99	0.04	79,79,79,79	1
6	IOD	B	506	1/1	0.99	0.04	65,65,65,65	1

The following is a graphical depiction of the model fit to experimental electron density of all instances of the Ligand of Interest. In addition, ligands with molecular weight > 250 and outliers as shown on the geometry validation Tables will also be included. Each fit is shown from different orientation to approximate a three-dimensional view.

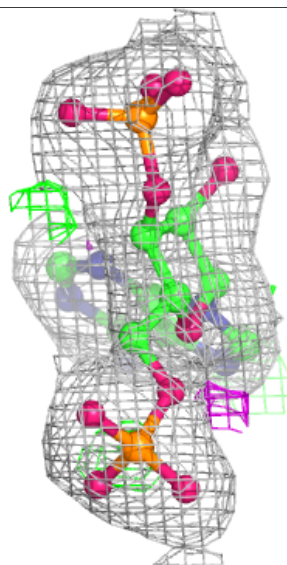
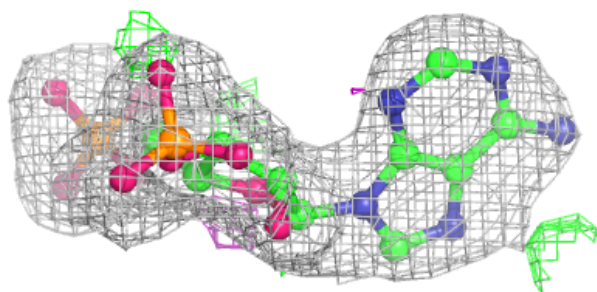
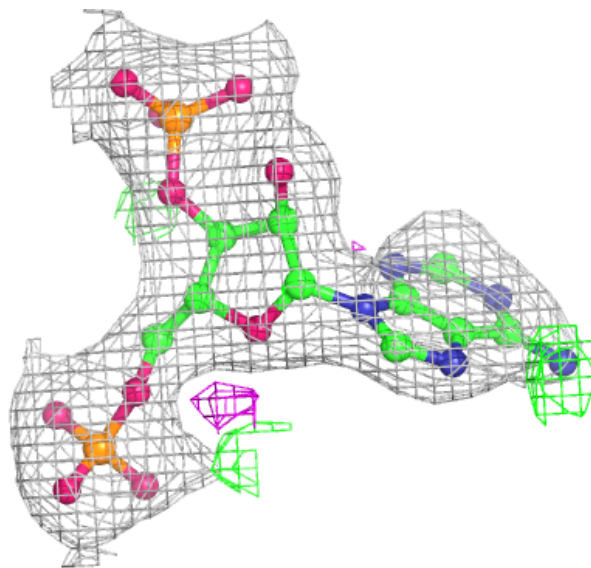
Electron density around A3P A 502:

$2mF_o-DF_c$ (at 0.7 rmsd) in gray
 mF_o-DF_c (at 3 rmsd) in purple (negative)
and green (positive)



Electron density around A3P B 503:

$2mF_o-DF_c$ (at 0.7 rmsd) in gray
 mF_o-DF_c (at 3 rmsd) in purple (negative)
and green (positive)



6.5 Other polymers [\(i\)](#)

There are no such residues in this entry.