



Full wwPDB EM Validation Report ⓘ

Dec 12, 2022 – 06:14 PM JST

PDB ID : 7XMC
EMDB ID : EMD-33293
Title : Cryo-EM structure of Cytochrome bo3 from Escherichia coli, apo structure with DMSO
Authors : Nishida, Y.; Shigematsu, H.; Iwamoto, T.; Takashima, S.; Shintani, Y.
Deposited on : 2022-04-25
Resolution : 3.09 Å(reported)

This is a Full wwPDB EM Validation Report for a publicly released PDB entry.

We welcome your comments at validation@mail.wwpdb.org

A user guide is available at

<https://www.wwpdb.org/validation/2017/EMValidationReportHelp>

with specific help available everywhere you see the ⓘ symbol.

The types of validation reports are described at

<http://www.wwpdb.org/validation/2017/FAQs#types>.

The following versions of software and data (see [references ⓘ](#)) were used in the production of this report:

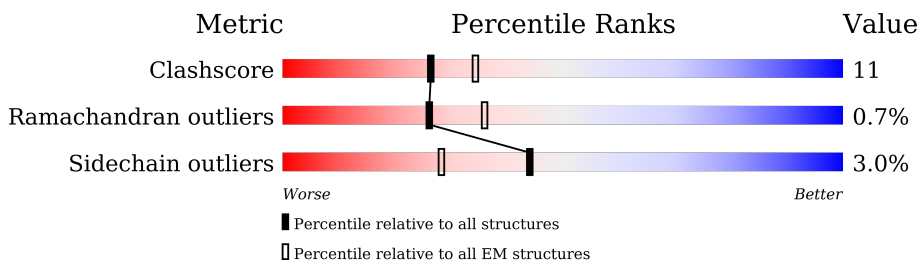
EMDB validation analysis : 0.0.1.dev43
Mogul : 1.8.5 (274361), CSD as541be (2020)
MolProbity : 4.02b-467
buster-report : 1.1.7 (2018)
Percentile statistics : 20191225.v01 (using entries in the PDB archive December 25th 2019)
MapQ : 1.9.9
Ideal geometry (proteins) : Engh & Huber (2001)
Ideal geometry (DNA, RNA) : Parkinson et al. (1996)
Validation Pipeline (wwPDB-VP) : 2.31.3

1 Overall quality at a glance

The following experimental techniques were used to determine the structure:
ELECTRON MICROSCOPY

The reported resolution of this entry is 3.09 Å.

Percentile scores (ranging between 0-100) for global validation metrics of the entry are shown in the following graphic. The table shows the number of entries on which the scores are based.



Metric	Whole archive (#Entries)	EM structures (#Entries)
Clashscore	158937	4297
Ramachandran outliers	154571	4023
Sidechain outliers	154315	3826

The table below summarises the geometric issues observed across the polymeric chains and their fit to the map. The red, orange, yellow and green segments of the bar indicate the fraction of residues that contain outliers for ≥ 3 , 2, 1 and 0 types of geometric quality criteria respectively. A grey segment represents the fraction of residues that are not modelled. The numeric value for each fraction is indicated below the corresponding segment, with a dot representing fractions $\leq 5\%$. The upper red bar (where present) indicates the fraction of residues that have poor fit to the EM map (all-atom inclusion $< 40\%$). The numeric value is given above the bar.

Mol	Chain	Length	Quality of chain
1	A	663	
2	B	324	
3	C	204	
4	D	109	

The following table lists non-polymeric compounds, carbohydrate monomers and non-standard residues in protein, DNA, RNA chains that are outliers for geometric or electron-density-fit criteria:

Mol	Type	Chain	Res	Chirality	Geometry	Clashes	Electron density
5	HEO	A	701	X	-	-	-

2 Entry composition

There are 9 unique types of molecules in this entry. The entry contains 9649 atoms, of which 0 are hydrogens and 0 are deuteriums.

In the tables below, the AltConf column contains the number of residues with at least one atom in alternate conformation and the Trace column contains the number of residues modelled with at most 2 atoms.

- Molecule 1 is a protein called Cytochrome bo(3) ubiquinol oxidase subunit 1.

Mol	Chain	Residues	Atoms					AltConf	Trace
			Total	C	N	O	S		
1	A	657	5218	3500	826	856	36	0	0

- Molecule 2 is a protein called Ubiquinol oxidase subunit 2.

Mol	Chain	Residues	Atoms					AltConf	Trace
			Total	C	N	O	S		
2	B	261	2039	1332	329	367	11	0	0

There are 9 discrepancies between the modelled and reference sequences:

Chain	Residue	Modelled	Actual	Comment	Reference
B	316	HIS	-	expression tag	UNP A0A024L5V9
B	317	HIS	-	expression tag	UNP A0A024L5V9
B	318	HIS	-	expression tag	UNP A0A024L5V9
B	319	HIS	-	expression tag	UNP A0A024L5V9
B	320	HIS	-	expression tag	UNP A0A024L5V9
B	321	HIS	-	expression tag	UNP A0A024L5V9
B	322	HIS	-	expression tag	UNP A0A024L5V9
B	323	HIS	-	expression tag	UNP A0A024L5V9
B	324	ARG	-	expression tag	UNP A0A024L5V9

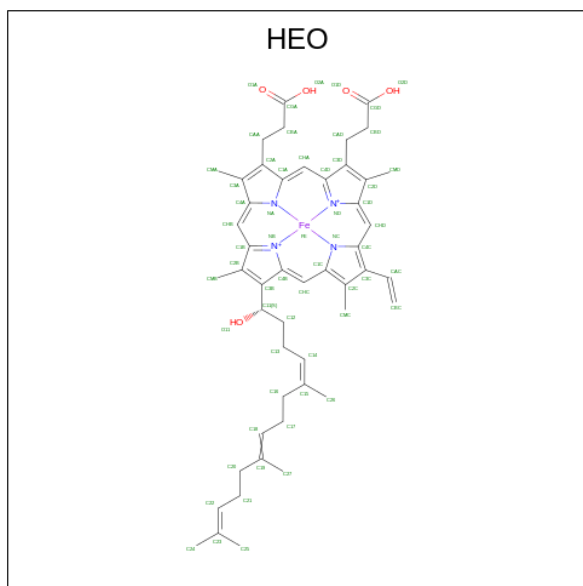
- Molecule 3 is a protein called Cytochrome bo(3) ubiquinol oxidase subunit 3.

Mol	Chain	Residues	Atoms					AltConf	Trace
			Total	C	N	O	S		
3	C	183	1437	962	225	237	13	0	0

- Molecule 4 is a protein called Cytochrome bo(3) ubiquinol oxidase subunit 4.

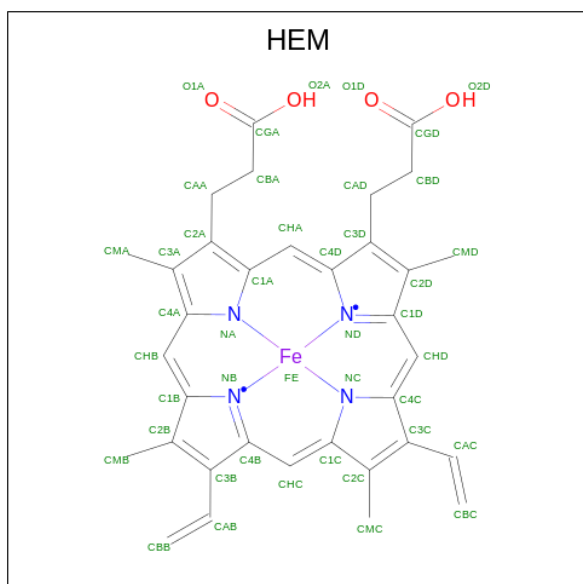
Mol	Chain	Residues	Atoms					AltConf	Trace
			Total	C	N	O	S		
4	D	96	749	503	114	121	11	0	0

- Molecule 5 is HEME O (three-letter code: HEO) (formula: $C_{49}H_{58}FeN_4O_5$).



Mol	Chain	Residues	Atoms				AltConf	
			Total	C	Fe	N		O
5	A	1	59	49	1	4	5	0

- Molecule 6 is PROTOPORPHYRIN IX CONTAINING FE (three-letter code: HEM) (formula: $C_{34}H_{32}FeN_4O_4$).

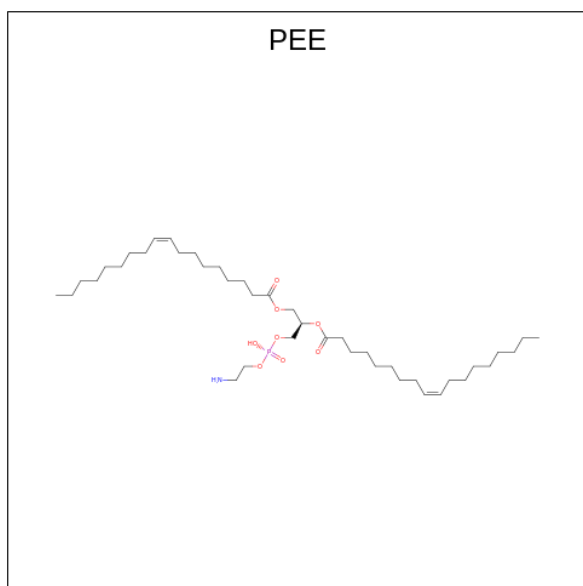


Mol	Chain	Residues	Atoms				AltConf	
			Total	C	Fe	N		O
6	A	1	43	34	1	4	4	0

- Molecule 7 is COPPER (II) ION (three-letter code: CU) (formula: Cu).

Mol	Chain	Residues	Atoms	AltConf
7	A	1	Total Cu 1 1	0

- Molecule 8 is 1,2-dioleoyl-sn-glycero-3-phosphoethanolamine (three-letter code: PEE) (formula: C₄₁H₇₈NO₈P).



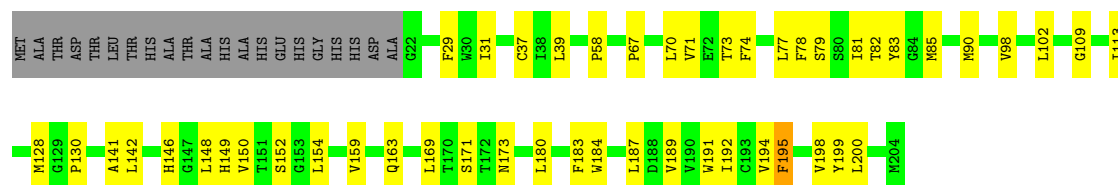
Mol	Chain	Residues	Atoms					AltConf
			Total	C	N	O	P	
8	A	1	51	41	1	8	1	0
8	C	1	51	41	1	8	1	0

- Molecule 9 is UNKNOWN ATOM OR ION (three-letter code: UNX) (formula: X).

Mol	Chain	Residues	Atoms	AltConf
9	B	1	Total X 1 1	0

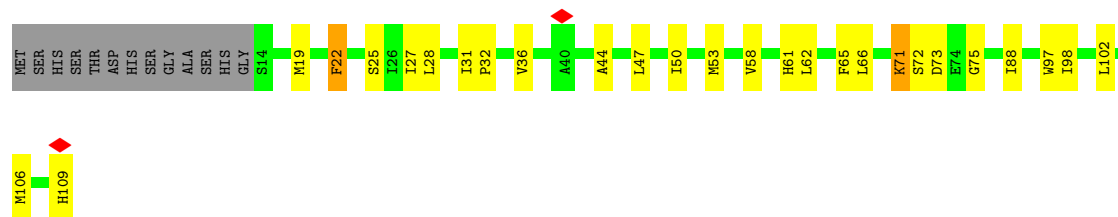
- Molecule 3: Cytochrome bo(3) ubiquinol oxidase subunit 3

Chain C:  66% 24% 10%



- Molecule 4: Cytochrome bo(3) ubiquinol oxidase subunit 4

Chain D:  63% 23% 12%



4 Experimental information

Property	Value	Source
EM reconstruction method	SINGLE PARTICLE	Depositor
Imposed symmetry	POINT, Not provided	
Number of particles used	43374	Depositor
Resolution determination method	FSC 0.143 CUT-OFF	Depositor
CTF correction method	PHASE FLIPPING AND AMPLITUDE CORRECTION	Depositor
Microscope	TFS GLACIOS	Depositor
Voltage (kV)	200	Depositor
Electron dose ($e^-/\text{\AA}^2$)	50.0	Depositor
Minimum defocus (nm)	500	Depositor
Maximum defocus (nm)	2000	Depositor
Magnification	Not provided	
Image detector	GATAN K2 SUMMIT (4k x 4k)	Depositor
Maximum map value	0.119	Depositor
Minimum map value	-0.050	Depositor
Average map value	0.000	Depositor
Map value standard deviation	0.003	Depositor
Recommended contour level	0.02	Depositor
Map size (Å)	355.599, 355.599, 355.599	wwPDB
Map dimensions	300, 300, 300	wwPDB
Map angles (°)	90.0, 90.0, 90.0	wwPDB
Pixel spacing (Å)	1.18533, 1.18533, 1.18533	Depositor

5 Model quality [i](#)

5.1 Standard geometry [i](#)

Bond lengths and bond angles in the following residue types are not validated in this section: HEM, HEO, PEE, CU, UNX

The Z score for a bond length (or angle) is the number of standard deviations the observed value is removed from the expected value. A bond length (or angle) with $|Z| > 5$ is considered an outlier worth inspection. RMSZ is the root-mean-square of all Z scores of the bond lengths (or angles).

Mol	Chain	Bond lengths		Bond angles	
		RMSZ	# Z >5	RMSZ	# Z >5
1	A	0.29	0/5394	0.47	0/7355
2	B	0.29	0/2098	0.46	0/2857
3	C	0.27	0/1479	0.45	0/2007
4	D	0.24	0/768	0.43	0/1049
All	All	0.28	0/9739	0.46	0/13268

There are no bond length outliers.

There are no bond angle outliers.

There are no chirality outliers.

There are no planarity outliers.

5.2 Too-close contacts [i](#)

In the following table, the Non-H and H(model) columns list the number of non-hydrogen atoms and hydrogen atoms in the chain respectively. The H(added) column lists the number of hydrogen atoms added and optimized by MolProbity. The Clashes column lists the number of clashes within the asymmetric unit, whereas Symm-Clashes lists symmetry-related clashes.

Mol	Chain	Non-H	H(model)	H(added)	Clashes	Symm-Clashes
1	A	5218	0	5225	136	0
2	B	2039	0	2035	46	0
3	C	1437	0	1451	38	0
4	D	749	0	785	21	0
5	A	59	0	56	8	0
6	A	43	0	30	2	0
7	A	1	0	0	0	0
8	A	51	0	82	10	0
8	C	51	0	82	7	0

Continued on next page...

Continued from previous page...

Mol	Chain	Non-H	H(model)	H(added)	Clashes	Symm-Clashes
9	B	1	0	0	0	0
All	All	9649	0	9746	216	0

The all-atom clashscore is defined as the number of clashes found per 1000 atoms (including hydrogen atoms). The all-atom clashscore for this structure is 11.

All (216) close contacts within the same asymmetric unit are listed below, sorted by their clash magnitude.

Atom-1	Atom-2	Interatomic distance (Å)	Clash overlap (Å)
1:A:374:ARG:HH12	2:B:80:PRO:HD3	1.51	0.75
1:A:626:ILE:HD12	3:C:159:VAL:HG21	1.70	0.74
1:A:374:ARG:HH11	2:B:78:TYR:HB3	1.51	0.73
3:C:37:CYS:HB3	4:D:88:ILE:HD11	1.72	0.71
1:A:16:ILE:HG23	1:A:18:MET:H	1.54	0.70
2:B:148:ALA:HB3	2:B:266:PHE:HB2	1.75	0.68
3:C:148:LEU:HD13	8:C:301:PEE:H41	1.75	0.68
1:A:396:MET:HB2	2:B:55:VAL:HG21	1.75	0.67
1:A:312:GLY:O	1:A:316:LEU:N	2.26	0.67
2:B:125:LYS:HD3	2:B:126:PRO:HD2	1.77	0.66
1:A:294:VAL:HG11	1:A:428:VAL:HA	1.78	0.65
2:B:147:ILE:HD11	2:B:239:LYS:HG2	1.78	0.64
1:A:299:SER:HB3	1:A:310:LEU:HD21	1.79	0.63
2:B:204:ASP:OD1	2:B:221:LYS:NZ	2.27	0.63
3:C:98:VAL:HG21	3:C:169:LEU:HD21	1.79	0.63
1:A:134:ARG:HA	1:A:551:ASN:ND2	2.13	0.63
3:C:142:LEU:HD21	3:C:194:VAL:HG22	1.81	0.63
1:A:286:GLU:HA	1:A:289:ILE:HD12	1.82	0.62
3:C:90:MET:HG2	3:C:169:LEU:HD23	1.82	0.62
1:A:288:TYR:HA	1:A:291:ILE:HG22	1.80	0.62
1:A:655:THR:HA	1:A:659:LEU:HB3	1.82	0.61
1:A:110:MET:HE2	1:A:114:VAL:HG11	1.81	0.61
1:A:417:ILE:HD13	1:A:420:PHE:HE2	1.66	0.60
2:B:95:VAL:HG12	2:B:96:PRO:HD3	1.84	0.60
1:A:80:ARG:NH2	1:A:83:GLN:OE1	2.35	0.59
1:A:130:GLN:HB3	1:A:226:PRO:HG2	1.85	0.59
1:A:424:ILE:HG21	6:A:702:HEM:CAC	2.33	0.59
2:B:32:PRO:HD3	2:B:41:ARG:HD3	1.84	0.59
1:A:605:ALA:HA	1:A:610:ILE:HG13	1.86	0.58
8:A:704:PEE:H10	8:C:301:PEE:H9	1.86	0.58
2:B:166:THR:HG21	2:B:278:ILE:HG12	1.85	0.57
3:C:83:TYR:OH	3:C:180:LEU:HB3	2.04	0.57

Continued on next page...

Continued from previous page...

Atom-1	Atom-2	Interatomic distance (Å)	Clash overlap (Å)
1:A:655:THR:HA	1:A:659:LEU:CB	2.34	0.57
1:A:416:LEU:HD11	5:A:701:HEO:HBD2	1.85	0.57
1:A:99:TYR:CD2	1:A:484:SER:HB3	2.39	0.57
1:A:100:ASP:HA	1:A:103:PHE:CE2	2.40	0.57
1:A:598:PHE:O	1:A:602:PHE:N	2.35	0.57
1:A:599:SER:OG	1:A:621:MET:SD	2.58	0.57
1:A:148:PHE:HA	1:A:151:VAL:HG12	1.85	0.56
3:C:74:PHE:HA	3:C:77:LEU:HB3	1.88	0.56
1:A:261:THR:HG22	3:C:130:PRO:HB2	1.88	0.56
2:B:130:GLU:HG2	2:B:164:LYS:HD2	1.86	0.56
1:A:174:PRO:HG3	1:A:275:TYR:HB3	1.87	0.55
5:A:701:HEO:H22	2:B:96:PRO:HB3	1.88	0.55
1:A:558:VAL:HG13	1:A:563:ALA:HB2	1.89	0.55
2:B:189:MET:HB3	4:D:106:MET:HB3	1.90	0.55
1:A:577:PRO:O	1:A:578:ASP:HB2	2.08	0.54
3:C:109:GLY:HA3	3:C:154:LEU:HD21	1.88	0.54
1:A:350:ILE:HA	1:A:353:MET:HE2	1.89	0.54
2:B:153:ILE:HG13	2:B:222:ALA:HA	1.89	0.54
1:A:374:ARG:HH22	2:B:80:PRO:HB3	1.73	0.54
1:A:419:HIS:O	1:A:423:VAL:HG22	2.07	0.54
1:A:50:THR:HG23	1:A:588:ASN:HB3	1.89	0.54
1:A:417:ILE:HA	1:A:420:PHE:CE2	2.43	0.54
1:A:141:LEU:HD13	8:A:704:PEE:H13	1.90	0.53
1:A:332:LEU:HB3	1:A:348:PHE:CG	2.43	0.53
1:A:174:PRO:HD3	1:A:275:TYR:CD2	2.44	0.53
1:A:367:LEU:HD21	1:A:388:ILE:HG21	1.89	0.53
1:A:337:THR:HG22	1:A:408:PHE:HA	1.91	0.52
1:A:436:MET:O	1:A:440:TRP:HB2	2.10	0.52
1:A:138:PHE:HB3	8:A:704:PEE:H2	1.91	0.52
3:C:189:VAL:HG13	4:D:58:VAL:HG22	1.92	0.52
2:B:32:PRO:HD2	2:B:38:LEU:HD23	1.92	0.52
3:C:149:HIS:CE1	8:C:301:PEE:H32	2.45	0.52
4:D:62:LEU:HD23	4:D:66:LEU:HD12	1.90	0.52
4:D:71:LYS:O	4:D:75:GLY:N	2.35	0.52
1:A:420:PHE:HB2	5:A:701:HEO:C2D	2.40	0.51
1:A:52:VAL:HB	1:A:139:PRO:HB2	1.90	0.51
1:A:209:PHE:HD2	3:C:31:ILE:HD13	1.76	0.51
1:A:45:TRP:CZ3	1:A:593:ILE:HD12	2.46	0.51
1:A:103:PHE:CE1	1:A:482:ARG:HD3	2.46	0.51
1:A:309:ARG:HD2	2:B:83:SER:HB2	1.92	0.51
3:C:142:LEU:HD22	3:C:198:VAL:HG11	1.92	0.51

Continued on next page...

Continued from previous page...

Atom-1	Atom-2	Interatomic distance (Å)	Clash overlap (Å)
1:A:299:SER:HG	1:A:366:TRP:HE1	1.55	0.51
1:A:412:ASN:O	1:A:481:ARG:HG3	2.11	0.51
1:A:76:ALA:HB2	1:A:106:HIS:CE1	2.46	0.50
1:A:441:PRO:HG3	1:A:447:LYS:HG2	1.92	0.50
2:B:69:TYR:O	2:B:78:TYR:OH	2.26	0.50
3:C:200:LEU:HG	4:D:36:VAL:HG21	1.94	0.50
4:D:27:ILE:HG23	4:D:28:LEU:HD12	1.93	0.50
1:A:266:ASN:O	2:B:281:PHE:HB3	2.12	0.49
1:A:477:MET:HA	2:B:27:SER:HB2	1.94	0.49
3:C:58:PRO:HG2	3:C:128:MET:HG3	1.94	0.49
4:D:61:HIS:HA	4:D:65:PHE:HD1	1.76	0.49
1:A:16:ILE:HG13	1:A:17:VAL:H	1.76	0.49
1:A:404:PRO:HD2	2:B:107:THR:HG23	1.95	0.49
1:A:515:GLN:HA	1:A:518:VAL:HG12	1.94	0.49
2:B:206:ILE:HG22	2:B:219:LYS:HG2	1.93	0.49
1:A:287:VAL:HG13	5:A:701:HEO:HBC1	1.93	0.49
2:B:136:TRP:CZ2	2:B:213:PRO:HD2	2.47	0.49
1:A:326:LEU:HD21	1:A:354:ILE:HG22	1.95	0.49
1:A:622:ILE:O	1:A:626:ILE:HG12	2.13	0.48
2:B:134:MET:HE3	2:B:137:LYS:HD2	1.95	0.48
2:B:50:LEU:HD21	2:B:102:PHE:HD2	1.78	0.48
4:D:19:MET:HA	4:D:22:PHE:HB3	1.94	0.48
2:B:199:GLU:O	2:B:203:TYR:OH	2.26	0.48
4:D:102:LEU:O	4:D:106:MET:HG2	2.13	0.48
1:A:344:VAL:HG12	4:D:97:TRP:CZ2	2.48	0.48
1:A:398:GLY:C	5:A:701:HEO:HMB3	2.33	0.48
1:A:399:VAL:HB	2:B:51:MET:SD	2.54	0.48
3:C:113:ILE:HD11	3:C:150:VAL:HB	1.95	0.48
1:A:353:MET:HG2	1:A:399:VAL:HG13	1.96	0.47
4:D:72:SER:OG	4:D:73:ASP:N	2.48	0.47
1:A:392:SER:HB2	2:B:55:VAL:HG13	1.95	0.47
1:A:40:LYS:HB3	1:A:43:TYR:HB3	1.97	0.47
1:A:110:MET:HA	1:A:114:VAL:HB	1.95	0.47
8:A:704:PEE:H79	8:C:301:PEE:H35	1.97	0.47
1:A:263:PHE:CZ	3:C:141:ALA:HB2	2.50	0.47
1:A:125:LEU:HD11	1:A:443:ALA:HB2	1.96	0.47
1:A:348:PHE:CZ	4:D:98:ILE:HD11	2.49	0.47
1:A:189:TYR:CD1	1:A:607:ILE:HD13	2.50	0.47
1:A:395:GLY:HA3	5:A:701:HEO:C15	2.45	0.46
1:A:316:LEU:O	1:A:320:THR:OG1	2.33	0.46
1:A:228:PHE:HA	1:A:296:GLY:HA3	1.96	0.46

Continued on next page...

Continued from previous page...

Atom-1	Atom-2	Interatomic distance (Å)	Clash overlap (Å)
1:A:329:ILE:HB	1:A:351:THR:HG21	1.98	0.46
1:A:103:PHE:CZ	1:A:482:ARG:HD3	2.50	0.46
1:A:353:MET:HB3	2:B:100:ILE:HD12	1.98	0.46
1:A:227:VAL:HG21	1:A:310:LEU:HD23	1.97	0.46
1:A:437:THR:HA	1:A:448:LEU:HD12	1.97	0.46
1:A:420:PHE:CD2	5:A:701:HEO:HBD1	2.51	0.46
2:B:225:THR:HB	2:B:230:ALA:HB3	1.98	0.45
2:B:67:TRP:O	2:B:70:ARG:HG3	2.17	0.45
1:A:138:PHE:O	1:A:207:ASN:ND2	2.50	0.45
4:D:32:PRO:HB3	4:D:50:ILE:HG22	1.99	0.45
1:A:245:ILE:O	1:A:249:THR:HG22	2.15	0.45
2:B:167:SER:OG	2:B:170:VAL:O	2.23	0.45
8:C:301:PEE:H67	8:C:301:PEE:H75	1.99	0.45
1:A:116:MET:HB2	1:A:117:PRO:HD3	1.99	0.45
3:C:146:HIS:NE2	3:C:191:TRP:HB2	2.31	0.45
3:C:192:ILE:HA	3:C:195:PHE:CD2	2.52	0.45
1:A:98:HIS:O	1:A:102:ILE:HG12	2.17	0.45
1:A:533:PRO:HD2	1:A:541:TRP:CE3	2.52	0.45
2:B:192:ARG:HD2	4:D:109:HIS:CE1	2.52	0.45
1:A:16:ILE:HG12	1:A:98:HIS:NE2	2.31	0.44
3:C:70:LEU:O	3:C:73:THR:HG22	2.16	0.44
1:A:323:ILE:HG13	1:A:358:PRO:HB2	1.98	0.44
1:A:625:TRP:CZ3	8:C:301:PEE:H59	2.53	0.44
1:A:6:SER:HB3	1:A:610:ILE:HG23	2.00	0.44
1:A:290:LEU:HB3	1:A:428:VAL:HG21	1.99	0.44
1:A:596:ALA:O	1:A:599:SER:HB2	2.17	0.44
1:A:564:PHE:HA	1:A:567:MET:HG2	2.00	0.44
1:A:545:SER:O	1:A:547:PRO:HD3	2.18	0.43
3:C:77:LEU:HD11	4:D:25:SER:HB2	1.99	0.43
1:A:100:ASP:OD2	2:B:210:TYR:OH	2.32	0.43
3:C:81:ILE:O	3:C:85:MET:HG2	2.18	0.43
1:A:352:THR:O	1:A:355:ILE:HG22	2.18	0.43
3:C:78:PHE:O	3:C:82:THR:HG22	2.18	0.43
1:A:174:PRO:HG2	1:A:175:PRO:HD3	2.00	0.43
3:C:194:VAL:O	3:C:198:VAL:HG22	2.18	0.43
1:A:352:THR:HG22	5:A:701:HEO:HMB2	2.01	0.43
2:B:140:PHE:O	2:B:148:ALA:HA	2.19	0.43
4:D:47:LEU:O	4:D:50:ILE:HG13	2.19	0.43
1:A:218:PRO:HD2	1:A:555:VAL:HG12	2.01	0.43
1:A:109:ILE:HD11	1:A:156:VAL:HB	2.01	0.42
1:A:263:PHE:HZ	3:C:141:ALA:HB2	1.84	0.42

Continued on next page...

Continued from previous page...

Atom-1	Atom-2	Interatomic distance (Å)	Clash overlap (Å)
8:A:704:PEE:H49	8:A:704:PEE:H7	1.21	0.42
1:A:16:ILE:HD12	1:A:16:ILE:HA	1.92	0.42
1:A:141:LEU:HG	1:A:203:LEU:HB3	2.01	0.42
1:A:357:ILE:HG12	1:A:358:PRO:HD3	1.99	0.42
3:C:70:LEU:HG	3:C:74:PHE:HE1	1.84	0.42
1:A:113:PHE:HA	1:A:117:PRO:HG2	2.02	0.42
3:C:67:PRO:O	3:C:71:VAL:HG12	2.18	0.42
3:C:171:SER:C	3:C:173:ASN:H	2.21	0.42
1:A:71:ARG:HH21	1:A:160:LEU:HB2	1.84	0.42
1:A:134:ARG:NH1	1:A:552:PHE:O	2.53	0.42
1:A:140:PHE:HB3	8:A:704:PEE:H3	2.02	0.42
3:C:29:PHE:CZ	3:C:183:PHE:HB2	2.54	0.42
3:C:152:SER:OG	8:C:301:PEE:H56	2.20	0.42
3:C:198:VAL:HG23	3:C:199:TYR:N	2.34	0.42
1:A:216:ARG:NH1	1:A:222:MET:SD	2.92	0.42
1:A:577:PRO:HD2	1:A:580:TYR:OH	2.20	0.42
1:A:413:SER:HA	1:A:480:THR:HA	2.00	0.42
1:A:487:ILE:HG22	1:A:491:PHE:HD2	1.85	0.42
2:B:91:VAL:HA	2:B:94:THR:HG1	1.84	0.42
3:C:192:ILE:HA	3:C:195:PHE:CE2	2.55	0.42
1:A:290:LEU:HD23	1:A:290:LEU:HA	1.89	0.42
3:C:149:HIS:HB3	3:C:187:LEU:HD21	2.02	0.42
1:A:482:ARG:HD2	2:B:210:TYR:HB2	2.02	0.41
3:C:200:LEU:HD21	4:D:50:ILE:HG21	2.02	0.41
1:A:48:TRP:C	1:A:50:THR:H	2.23	0.41
1:A:625:TRP:CZ2	8:A:704:PEE:H20	2.55	0.41
2:B:247:ASP:OD1	2:B:248:MET:N	2.54	0.41
4:D:58:VAL:O	4:D:62:LEU:HG	2.19	0.41
1:A:602:PHE:CZ	8:A:704:PEE:H47	2.56	0.41
1:A:134:ARG:HD3	1:A:583:ILE:HD12	2.02	0.41
1:A:168:THR:HG22	1:A:176:LEU:HG	2.02	0.41
1:A:417:ILE:HD13	1:A:420:PHE:CE2	2.51	0.41
2:B:142:TYR:N	2:B:142:TYR:CD1	2.87	0.41
1:A:122:LEU:HD11	1:A:432:CYS:HA	2.03	0.41
1:A:292:LEU:HD21	1:A:323:ILE:HG21	2.02	0.41
1:A:458:TRP:HA	1:A:461:ILE:HG22	2.02	0.41
1:A:528:ASP:OD2	1:A:545:SER:HB3	2.21	0.41
1:A:13:HIS:O	1:A:16:ILE:HG22	2.20	0.41
1:A:144:LEU:HD21	8:A:704:PEE:H22	2.02	0.41
1:A:462:ILE:O	1:A:466:VAL:HG22	2.21	0.41
1:A:482:ARG:HD2	2:B:210:TYR:CB	2.50	0.41

Continued on next page...

Continued from previous page...

Atom-1	Atom-2	Interatomic distance (Å)	Clash overlap (Å)
2:B:91:VAL:HA	2:B:94:THR:OG1	2.21	0.41
2:B:183:ILE:HD12	2:B:183:ILE:HA	1.92	0.41
1:A:203:LEU:HD21	8:A:704:PEE:H63	2.02	0.41
1:A:255:LEU:HB2	1:A:263:PHE:HE2	1.84	0.41
1:A:344:VAL:HG12	4:D:97:TRP:CE2	2.56	0.41
1:A:422:ASN:HA	1:A:464:PHE:CE1	2.56	0.41
1:A:613:LEU:HA	1:A:616:VAL:HG22	2.03	0.41
4:D:31:ILE:CG1	4:D:32:PRO:HD3	2.51	0.41
1:A:166:ALA:H	1:A:186:GLY:HA3	1.86	0.41
1:A:387:PHE:HD1	1:A:426:GLY:O	2.03	0.41
2:B:141:ILE:HG23	2:B:269:VAL:HG11	2.03	0.41
3:C:102:LEU:HD23	3:C:102:LEU:HA	1.95	0.40
1:A:45:TRP:HZ3	1:A:593:ILE:HD12	1.84	0.40
2:B:248:MET:HE1	2:B:277:VAL:HG22	2.04	0.40
3:C:79:SER:CB	3:C:184:TRP:HE1	2.34	0.40
1:A:73:PHE:CD1	6:A:702:HEM:HAB	2.56	0.40
1:A:125:LEU:O	1:A:129:LEU:HD12	2.21	0.40
2:B:52:LEU:O	2:B:56:ILE:HB	2.21	0.40
2:B:184:TYR:HD1	2:B:184:TYR:HA	1.68	0.40
3:C:198:VAL:HG23	3:C:199:TYR:H	1.87	0.40

There are no symmetry-related clashes.

5.3 Torsion angles [i](#)

5.3.1 Protein backbone [i](#)

In the following table, the Percentiles column shows the percent Ramachandran outliers of the chain as a percentile score with respect to all PDB entries followed by that with respect to all EM entries.

The Analysed column shows the number of residues for which the backbone conformation was analysed, and the total number of residues.

Mol	Chain	Analysed	Favoured	Allowed	Outliers	Percentiles	
1	A	655/663 (99%)	610 (93%)	39 (6%)	6 (1%)	17	52
2	B	259/324 (80%)	245 (95%)	13 (5%)	1 (0%)	34	69
3	C	181/204 (89%)	175 (97%)	6 (3%)	0	100	100
4	D	94/109 (86%)	91 (97%)	2 (2%)	1 (1%)	14	46
All	All	1189/1300 (92%)	1121 (94%)	60 (5%)	8 (1%)	26	57

All (8) Ramachandran outliers are listed below:

Mol	Chain	Res	Type
1	A	578	ASP
1	A	9	ALA
1	A	558	VAL
4	D	44	ALA
1	A	563	ALA
1	A	444	PHE
1	A	487	ILE
2	B	181	SER

5.3.2 Protein sidechains [i](#)

In the following table, the Percentiles column shows the percent sidechain outliers of the chain as a percentile score with respect to all PDB entries followed by that with respect to all EM entries.

The Analysed column shows the number of residues for which the sidechain conformation was analysed, and the total number of residues.

Mol	Chain	Analysed	Rotameric	Outliers	Percentiles	
1	A	543/547 (99%)	525 (97%)	18 (3%)	38	69
2	B	218/271 (80%)	212 (97%)	6 (3%)	43	73
3	C	151/166 (91%)	148 (98%)	3 (2%)	55	80
4	D	84/94 (89%)	81 (96%)	3 (4%)	35	67
All	All	996/1078 (92%)	966 (97%)	30 (3%)	44	71

All (30) residues with a non-rotameric sidechain are listed below:

Mol	Chain	Res	Type
1	A	10	VAL
1	A	118	PHE
1	A	124	ASN
1	A	320	THR
1	A	329	ILE
1	A	333	HIS
1	A	374	ARG
1	A	387	PHE
1	A	396	MET
1	A	488	ASP
1	A	525	GLN
1	A	545	SER

Continued on next page...

Continued from previous page...

Mol	Chain	Res	Type
1	A	551	ASN
1	A	594	VAL
1	A	600	THR
1	A	610	ILE
1	A	659	LEU
1	A	660	LYS
2	B	40	GLN
2	B	50	LEU
2	B	135	ASP
2	B	184	TYR
2	B	227	ASP
2	B	244	THR
3	C	39	LEU
3	C	163	GLN
3	C	195	PHE
4	D	22	PHE
4	D	53	MET
4	D	71	LYS

Sometimes sidechains can be flipped to improve hydrogen bonding and reduce clashes. There are no such sidechains identified.

5.3.3 RNA [i](#)

There are no RNA molecules in this entry.

5.4 Non-standard residues in protein, DNA, RNA chains [i](#)

There are no non-standard protein/DNA/RNA residues in this entry.

5.5 Carbohydrates [i](#)

There are no monosaccharides in this entry.

5.6 Ligand geometry [i](#)

Of 6 ligands modelled in this entry, 1 is monoatomic and 1 is unknown - leaving 4 for Mogul analysis.

In the following table, the Counts columns list the number of bonds (or angles) for which Mogul statistics could be retrieved, the number of bonds (or angles) that are observed in the model and

the number of bonds (or angles) that are defined in the Chemical Component Dictionary. The Link column lists molecule types, if any, to which the group is linked. The Z score for a bond length (or angle) is the number of standard deviations the observed value is removed from the expected value. A bond length (or angle) with $|Z| > 2$ is considered an outlier worth inspection. RMSZ is the root-mean-square of all Z scores of the bond lengths (or angles).

Mol	Type	Chain	Res	Link	Bond lengths			Bond angles		
					Counts	RMSZ	# Z > 2	Counts	RMSZ	# Z > 2
6	HEM	A	702	1	41,50,50	1.34	4 (9%)	45,82,82	1.83	13 (28%)
8	PEE	C	301	-	50,50,50	0.73	2 (4%)	53,55,55	0.51	0
8	PEE	A	704	-	50,50,50	0.73	2 (4%)	53,55,55	0.52	0
5	HEO	A	701	1	63,66,66	1.19	7 (11%)	71,102,102	1.88	23 (32%)

In the following table, the Chirals column lists the number of chiral outliers, the number of chiral centers analysed, the number of these observed in the model and the number defined in the Chemical Component Dictionary. Similar counts are reported in the Torsion and Rings columns. '-' means no outliers of that kind were identified.

Mol	Type	Chain	Res	Link	Chirals	Torsions	Rings
6	HEM	A	702	1	-	2/12/54/54	-
8	PEE	C	301	-	-	11/54/54/54	-
8	PEE	A	704	-	-	14/54/54/54	-
5	HEO	A	701	1	3/3/17/25	8/32/114/114	-

All (15) bond length outliers are listed below:

Mol	Chain	Res	Type	Atoms	Z	Observed(Å)	Ideal(Å)
6	A	702	HEM	C1B-NB	-3.43	1.34	1.40
8	C	301	PEE	C39-C38	3.41	1.51	1.31
8	C	301	PEE	C18-C19	3.38	1.51	1.31
8	A	704	PEE	C18-C19	3.36	1.51	1.31
8	A	704	PEE	C39-C38	3.34	1.51	1.31
6	A	702	HEM	C4D-ND	-3.33	1.34	1.40
5	A	701	HEO	C1D-ND	-3.32	1.34	1.40
5	A	701	HEO	C4B-NB	-3.17	1.34	1.40
6	A	702	HEM	FE-NB	2.89	2.11	1.96
5	A	701	HEO	FE-NB	2.57	2.11	1.97
5	A	701	HEO	C1A-C2A	-2.38	1.41	1.45
5	A	701	HEO	C4A-C3A	-2.23	1.40	1.45
6	A	702	HEM	C1D-ND	-2.09	1.34	1.38
5	A	701	HEO	C4B-C3B	2.09	1.48	1.44
5	A	701	HEO	C1B-NB	-2.06	1.34	1.38

All (36) bond angle outliers are listed below:

Mol	Chain	Res	Type	Atoms	Z	Observed(°)	Ideal(°)
6	A	702	HEM	CHC-C4B-NB	4.55	129.38	124.43
6	A	702	HEM	CHD-C1D-ND	4.40	129.22	124.43
5	A	701	HEO	CHC-C4B-NB	4.20	129.57	124.38
5	A	701	HEO	C4B-NB-C1B	3.96	109.17	105.07
5	A	701	HEO	CHA-C4D-ND	3.84	128.59	124.42
5	A	701	HEO	CHD-C1D-ND	3.64	128.88	124.38
6	A	702	HEM	C1B-NB-C4B	3.62	108.81	105.07
6	A	702	HEM	CHA-C4D-ND	3.59	128.82	124.38
6	A	702	HEM	CHB-C1B-NB	3.54	128.76	124.38
5	A	701	HEO	CHB-C1B-NB	3.54	128.26	124.42
5	A	701	HEO	C13-C12-C11	-3.10	109.69	114.35
5	A	701	HEO	CAD-CBD-CGD	-2.93	107.29	113.60
5	A	701	HEO	C13-C14-C15	-2.93	120.61	127.66
5	A	701	HEO	CHA-C1A-NA	2.86	127.54	124.44
6	A	702	HEM	CHD-C1D-C2D	-2.81	120.58	124.98
5	A	701	HEO	C27-C19-C20	2.77	119.93	115.27
5	A	701	HEO	C26-C15-C16	2.69	119.79	115.27
6	A	702	HEM	CAA-CBA-CGA	-2.67	106.26	113.76
5	A	701	HEO	CAA-CBA-CGA	-2.46	108.30	113.60
5	A	701	HEO	CHA-C4D-C3D	-2.42	121.28	124.84
6	A	702	HEM	CAD-CBD-CGD	-2.35	108.54	113.60
5	A	701	HEO	CAA-C2A-C3A	2.33	132.22	127.88
5	A	701	HEO	CAD-C3D-C4D	2.33	128.73	124.66
5	A	701	HEO	C25-C23-C24	2.30	119.69	114.60
5	A	701	HEO	CMC-C2C-C1C	-2.26	124.99	128.46
6	A	702	HEM	CHA-C4D-C3D	-2.26	121.09	125.33
5	A	701	HEO	CMB-C2B-C3B	-2.25	126.05	130.34
5	A	701	HEO	C21-C22-C23	-2.22	120.15	127.75
6	A	702	HEM	CHB-C1B-C2B	-2.13	120.83	126.72
6	A	702	HEM	C4D-ND-C1D	2.13	107.27	105.07
6	A	702	HEM	CMC-C2C-C3C	2.11	128.63	124.68
5	A	701	HEO	C1A-CHA-C4D	-2.11	121.50	126.06
6	A	702	HEM	CBA-CAA-C2A	-2.07	109.08	112.62
5	A	701	HEO	CHD-C1D-C2D	-2.06	121.02	126.72
5	A	701	HEO	C4A-NA-C1A	2.05	107.35	105.35
5	A	701	HEO	CAA-C2A-C1A	-2.04	121.06	124.89

All (3) chirality outliers are listed below:

Mol	Chain	Res	Type	Atom
5	A	701	HEO	NA
5	A	701	HEO	NB

Continued on next page...

Continued from previous page...

Mol	Chain	Res	Type	Atom
5	A	701	HEO	ND

All (35) torsion outliers are listed below:

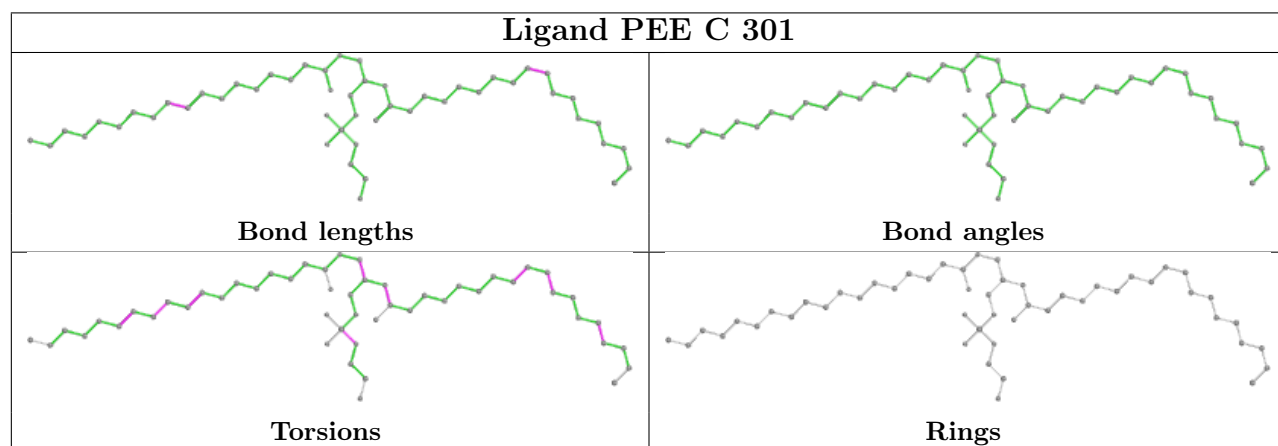
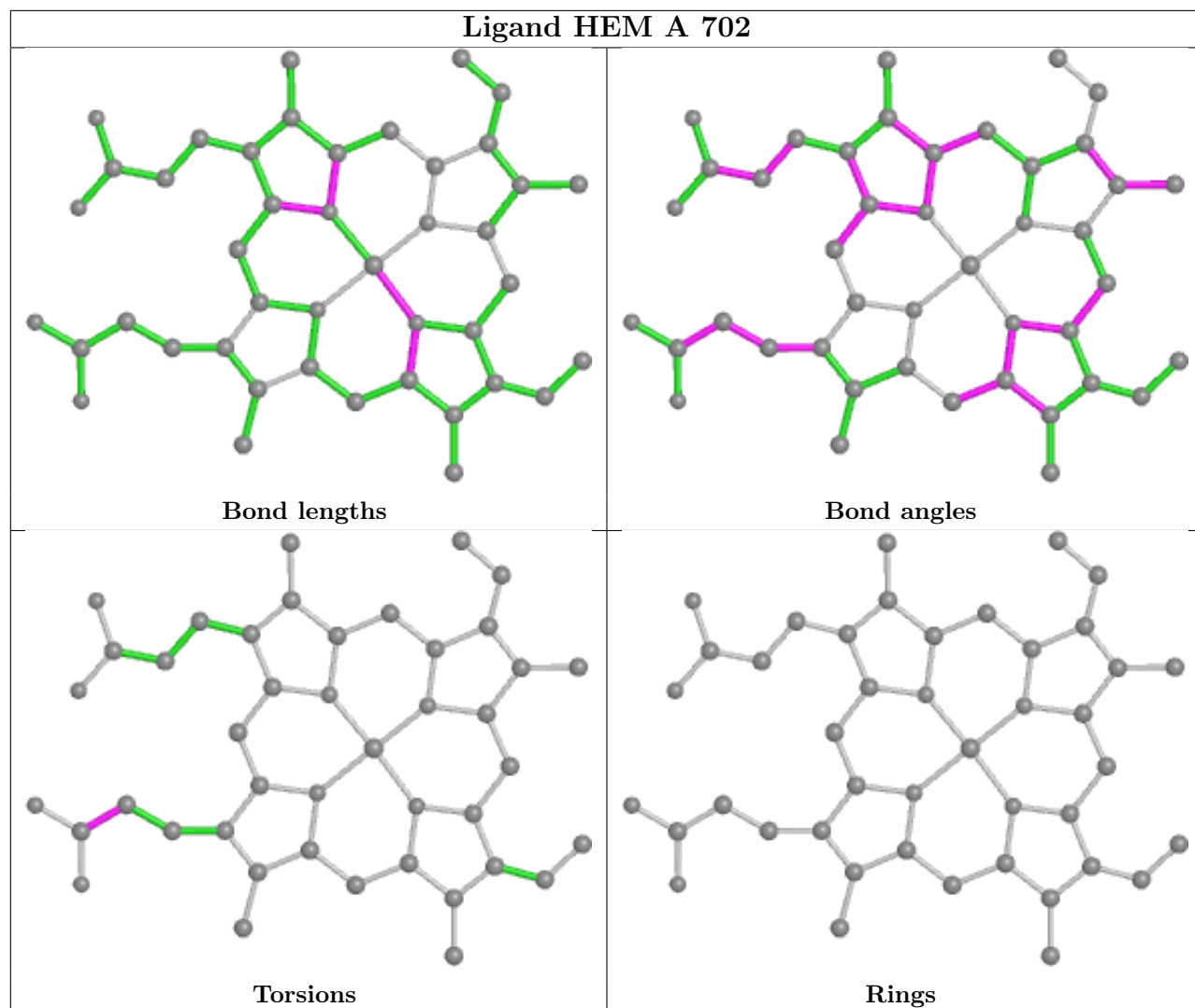
Mol	Chain	Res	Type	Atoms
5	A	701	HEO	C3A-C2A-CAA-CBA
8	A	704	PEE	O5-C30-O3-C3
8	A	704	PEE	C31-C30-O3-C3
8	C	301	PEE	C11-C10-O2-C2
8	C	301	PEE	O4-C10-O2-C2
5	A	701	HEO	C1A-C2A-CAA-CBA
5	A	701	HEO	C19-C20-C21-C22
8	A	704	PEE	C17-C18-C19-C20
5	A	701	HEO	C27-C19-C20-C21
8	A	704	PEE	C23-C24-C25-C26
8	A	704	PEE	C4-O4P-P-O3P
8	C	301	PEE	C1-C2-C3-O3
5	A	701	HEO	C18-C19-C20-C21
8	A	704	PEE	C2-C1-O3P-P
8	C	301	PEE	C40-C41-C42-C43
8	A	704	PEE	C5-C4-O4P-P
8	A	704	PEE	C36-C37-C38-C39
8	A	704	PEE	C38-C39-C40-C41
8	C	301	PEE	C36-C37-C38-C39
8	C	301	PEE	C38-C39-C40-C41
8	C	301	PEE	C4-O4P-P-O3P
6	A	702	HEM	CAA-CBA-CGA-O1A
5	A	701	HEO	CAD-CBD-CGD-O2D
8	C	301	PEE	C16-C17-C18-C19
5	A	701	HEO	CAD-CBD-CGD-O1D
8	C	301	PEE	O2-C2-C3-O3
6	A	702	HEM	CAA-CBA-CGA-O2A
8	A	704	PEE	C11-C12-C13-C14
8	A	704	PEE	C16-C17-C18-C19
8	A	704	PEE	C18-C19-C20-C21
8	C	301	PEE	C18-C19-C20-C21
5	A	701	HEO	C26-C15-C16-C17
8	C	301	PEE	C22-C23-C24-C25
8	A	704	PEE	C40-C41-C42-C43
8	A	704	PEE	C4-O4P-P-O2P

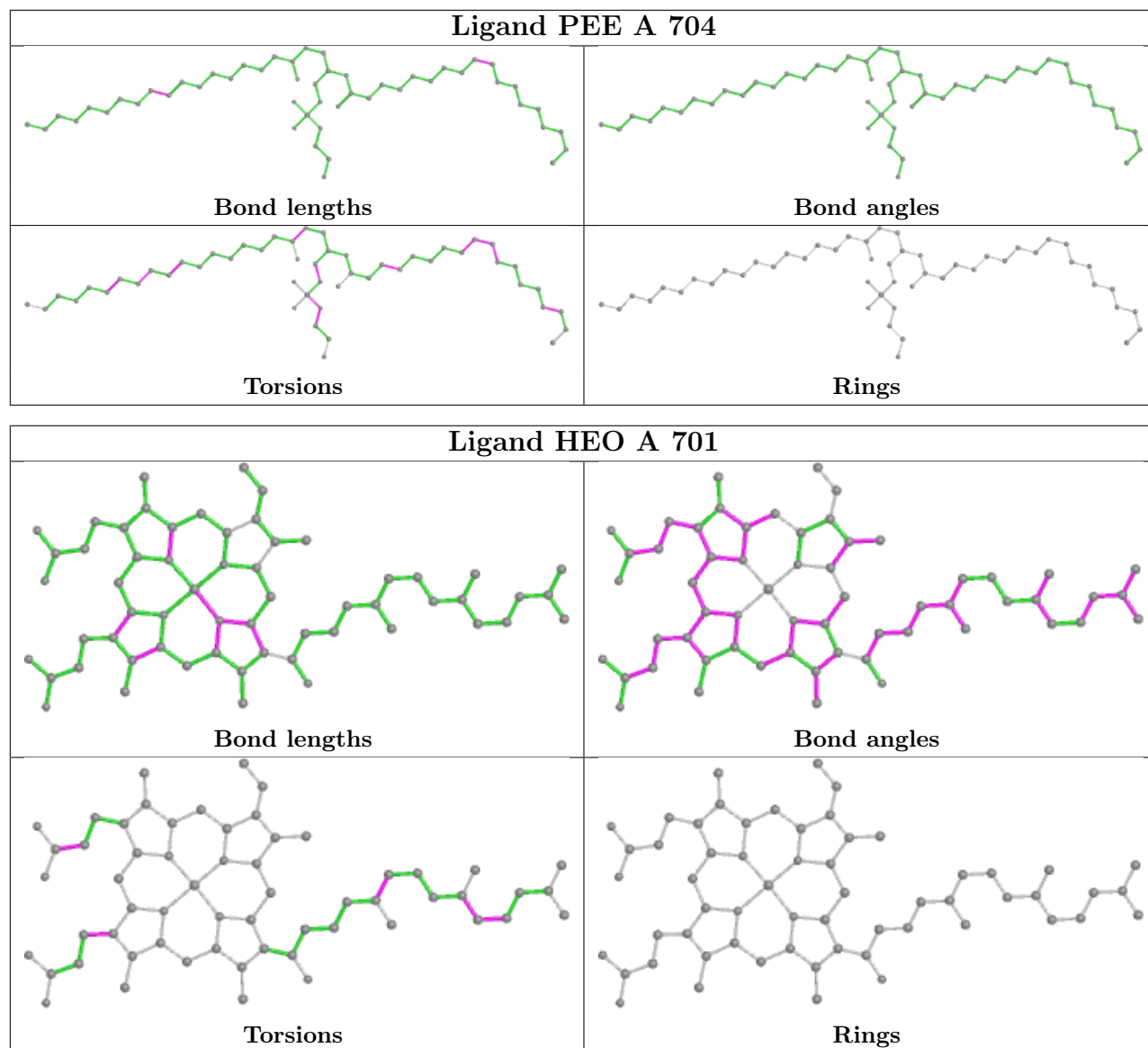
There are no ring outliers.

4 monomers are involved in 25 short contacts:

Mol	Chain	Res	Type	Clashes	Symm-Clashes
6	A	702	HEM	2	0
8	C	301	PEE	7	0
8	A	704	PEE	10	0
5	A	701	HEO	8	0

The following is a two-dimensional graphical depiction of Mogul quality analysis of bond lengths, bond angles, torsion angles, and ring geometry for all instances of the Ligand of Interest. In addition, ligands with molecular weight > 250 and outliers as shown on the validation Tables will also be included. For torsion angles, if less than 5% of the Mogul distribution of torsion angles is within 10 degrees of the torsion angle in question, then that torsion angle is considered an outlier. Any bond that is central to one or more torsion angles identified as an outlier by Mogul will be highlighted in the graph. For rings, the root-mean-square deviation (RMSD) between the ring in question and similar rings identified by Mogul is calculated over all ring torsion angles. If the average RMSD is greater than 60 degrees and the minimal RMSD between the ring in question and any Mogul-identified rings is also greater than 60 degrees, then that ring is considered an outlier. The outliers are highlighted in purple. The color gray indicates Mogul did not find sufficient equivalents in the CSD to analyse the geometry.





5.7 Other polymers [i](#)

There are no such residues in this entry.

5.8 Polymer linkage issues [i](#)

There are no chain breaks in this entry.

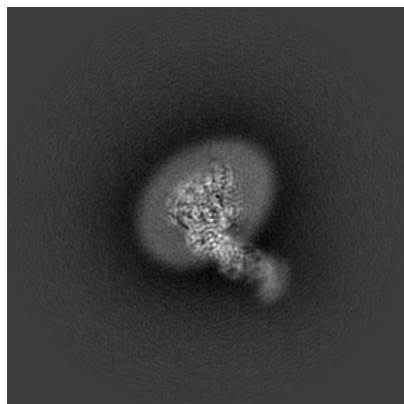
6 Map visualisation [i](#)

This section contains visualisations of the EMDB entry EMD-33293. These allow visual inspection of the internal detail of the map and identification of artifacts.

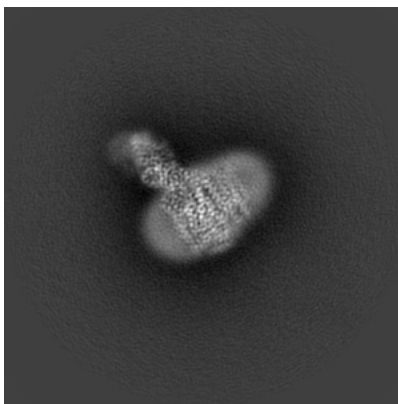
Images derived from a raw map, generated by summing the deposited half-maps, are presented below the corresponding image components of the primary map to allow further visual inspection and comparison with those of the primary map.

6.1 Orthogonal projections [i](#)

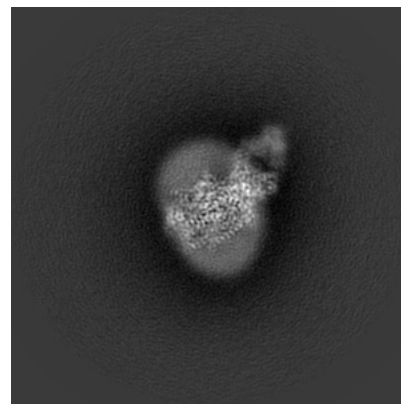
6.1.1 Primary map



X

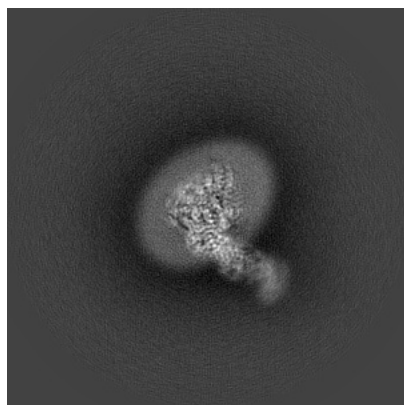


Y

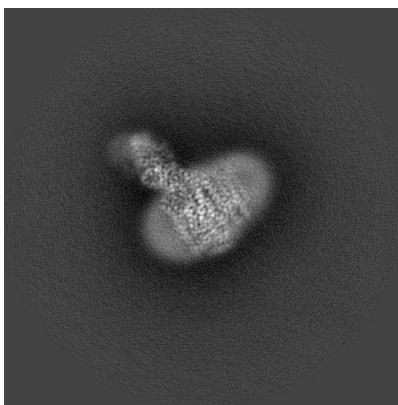


Z

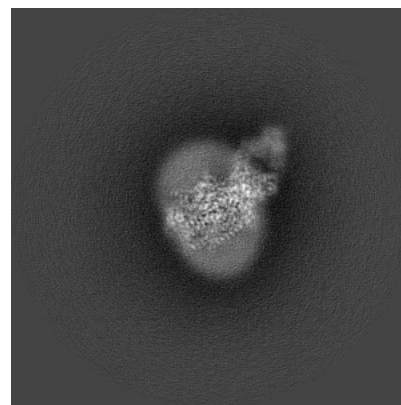
6.1.2 Raw map



X



Y

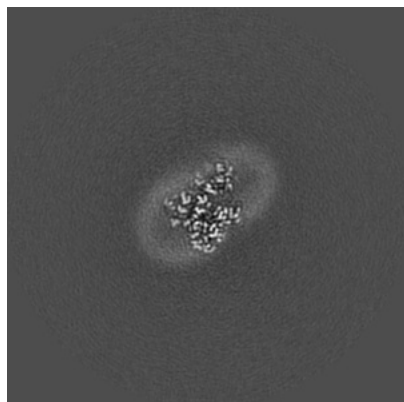


Z

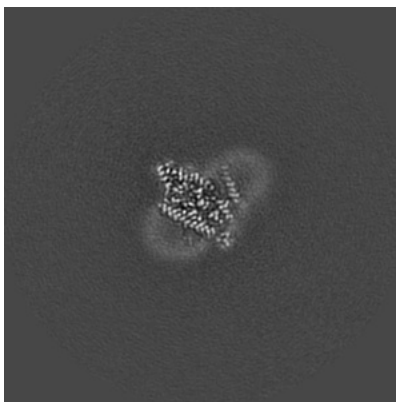
The images above show the map projected in three orthogonal directions.

6.2 Central slices [i](#)

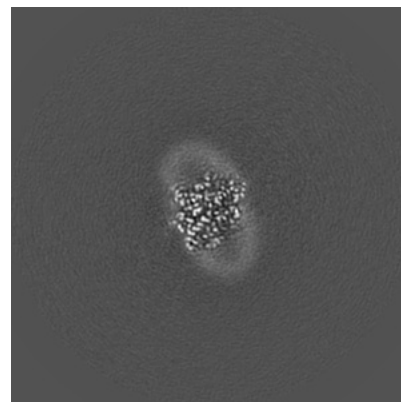
6.2.1 Primary map



X Index: 150

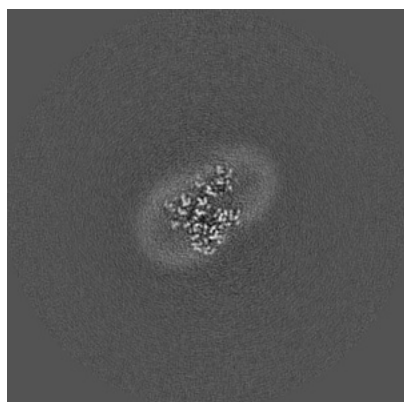


Y Index: 150

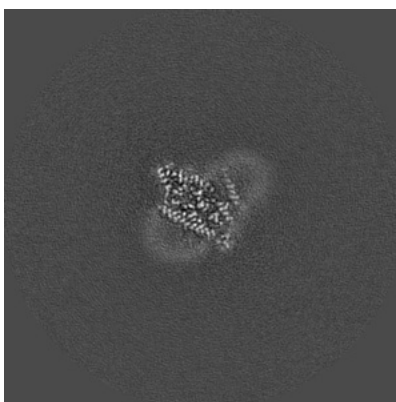


Z Index: 150

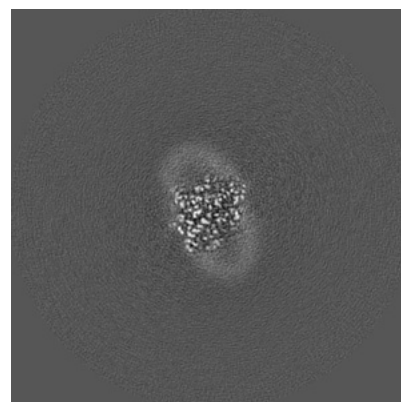
6.2.2 Raw map



X Index: 150



Y Index: 150

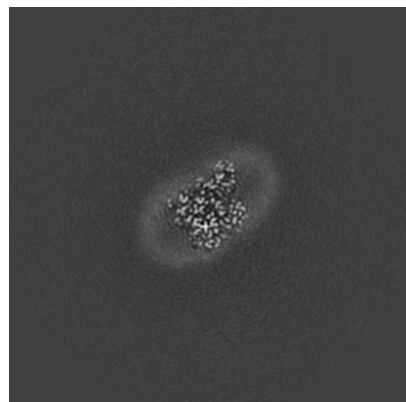


Z Index: 150

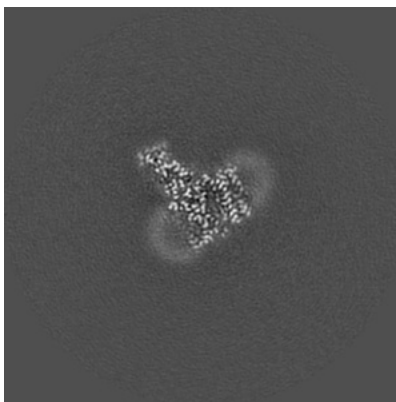
The images above show central slices of the map in three orthogonal directions.

6.3 Largest variance slices [i](#)

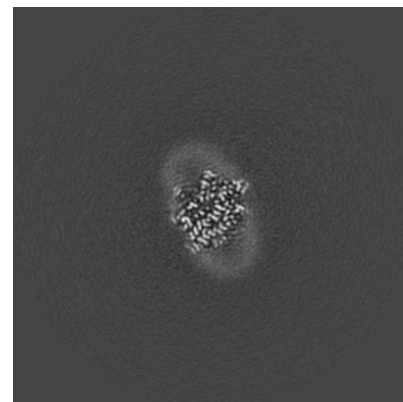
6.3.1 Primary map



X Index: 147

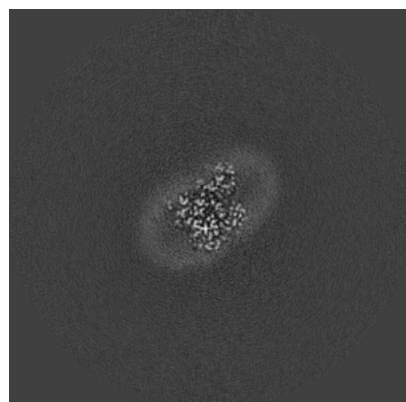


Y Index: 159

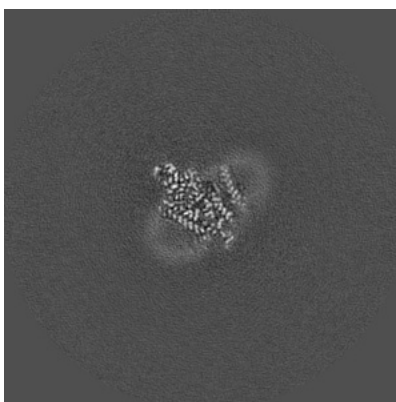


Z Index: 148

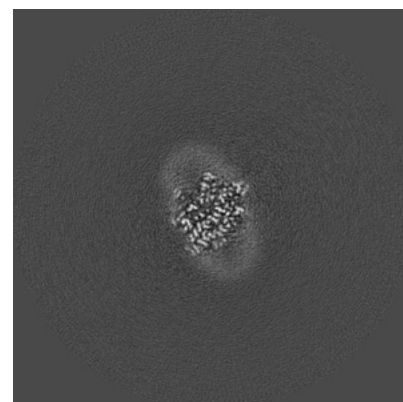
6.3.2 Raw map



X Index: 147



Y Index: 152

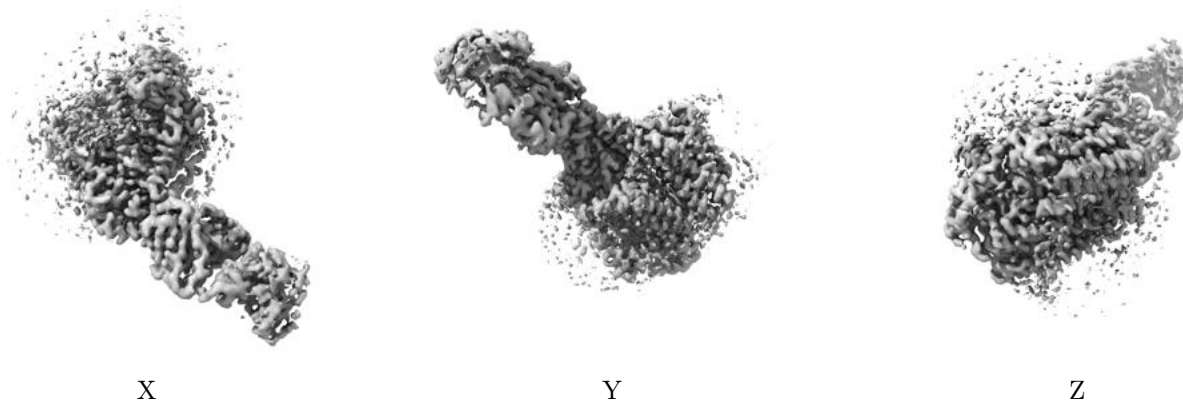


Z Index: 148

The images above show the largest variance slices of the map in three orthogonal directions.

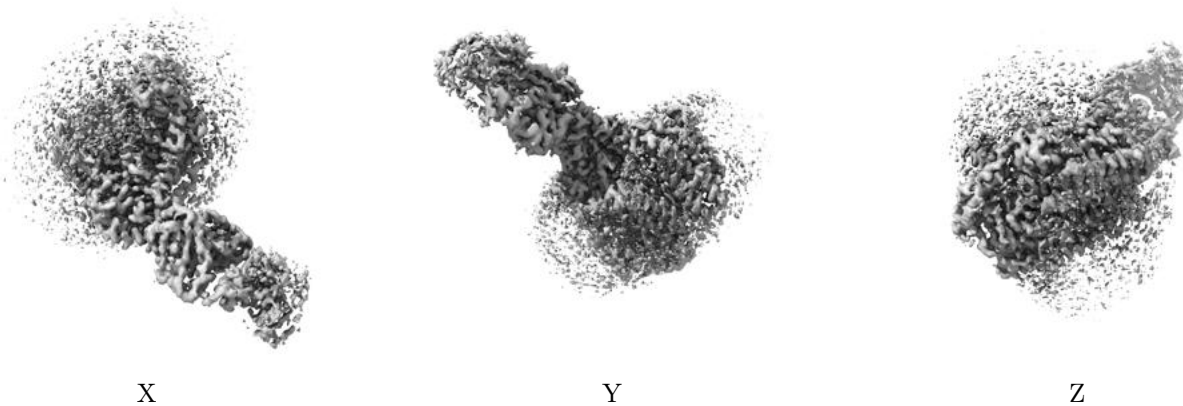
6.4 Orthogonal surface views [i](#)

6.4.1 Primary map



The images above show the 3D surface view of the map at the recommended contour level 0.02. These images, in conjunction with the slice images, may facilitate assessment of whether an appropriate contour level has been provided.

6.4.2 Raw map



These images show the 3D surface of the raw map. The raw map's contour level was selected so that its surface encloses the same volume as the primary map does at its recommended contour level.

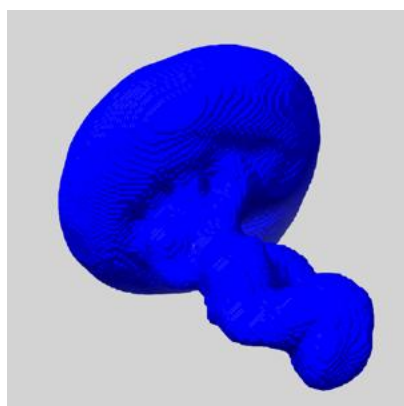
6.5 Mask visualisation [i](#)

This section shows the 3D surface view of the primary map at 50% transparency overlaid with the specified mask at 0% transparency

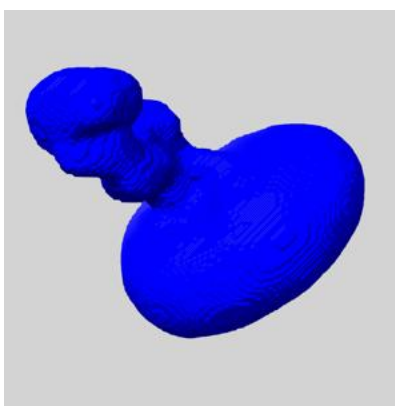
A mask typically either:

- Encompasses the whole structure
- Separates out a domain, a functional unit, a monomer or an area of interest from a larger structure

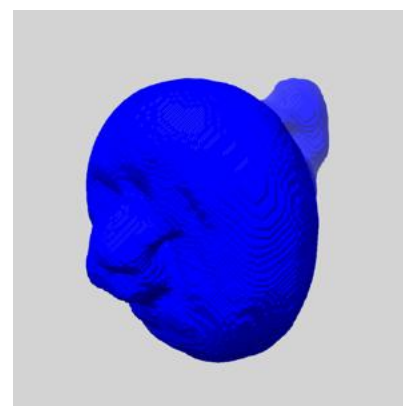
6.5.1 emd_33293_msk_1.map [i](#)



X



Y

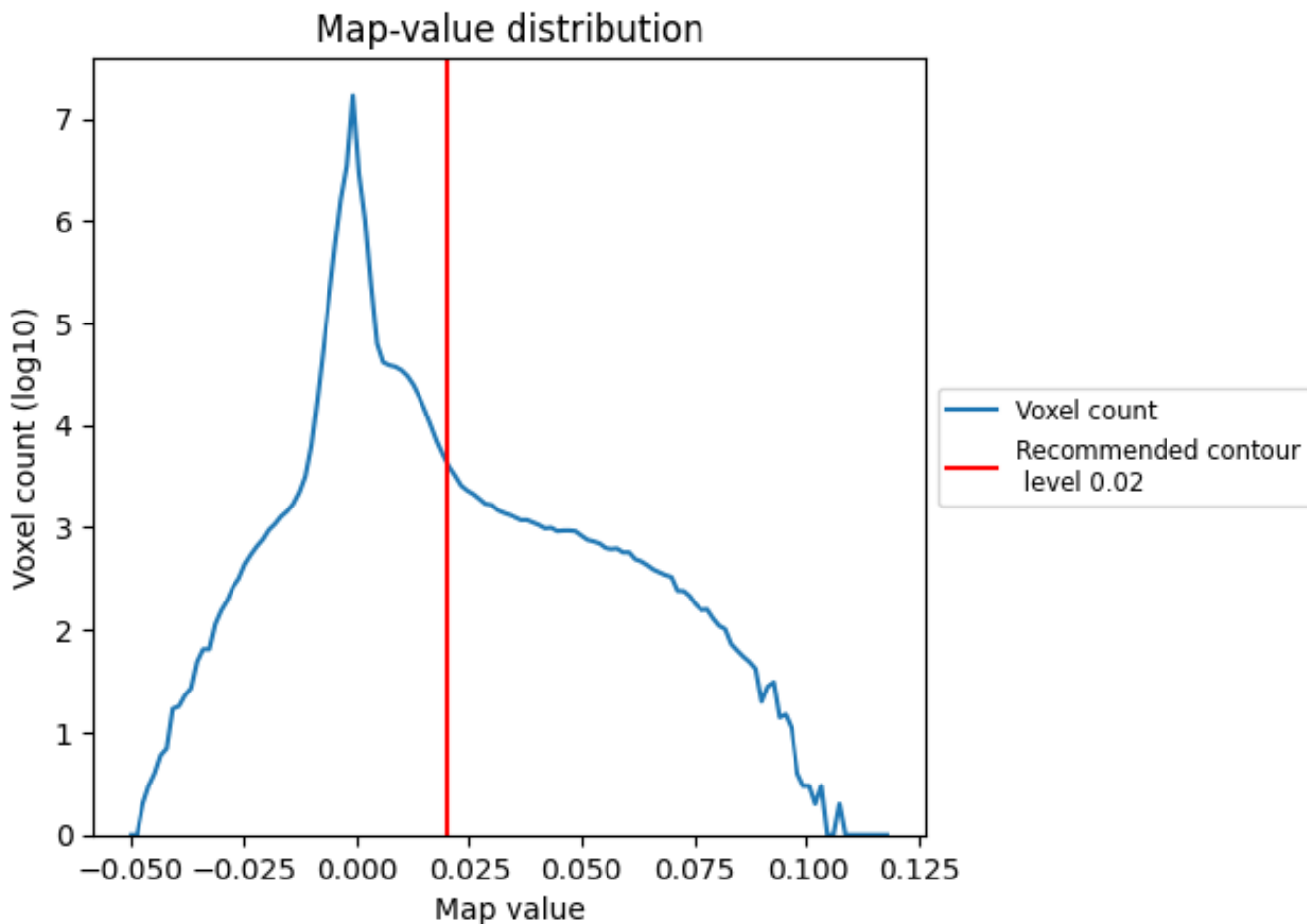


Z

7 Map analysis [i](#)

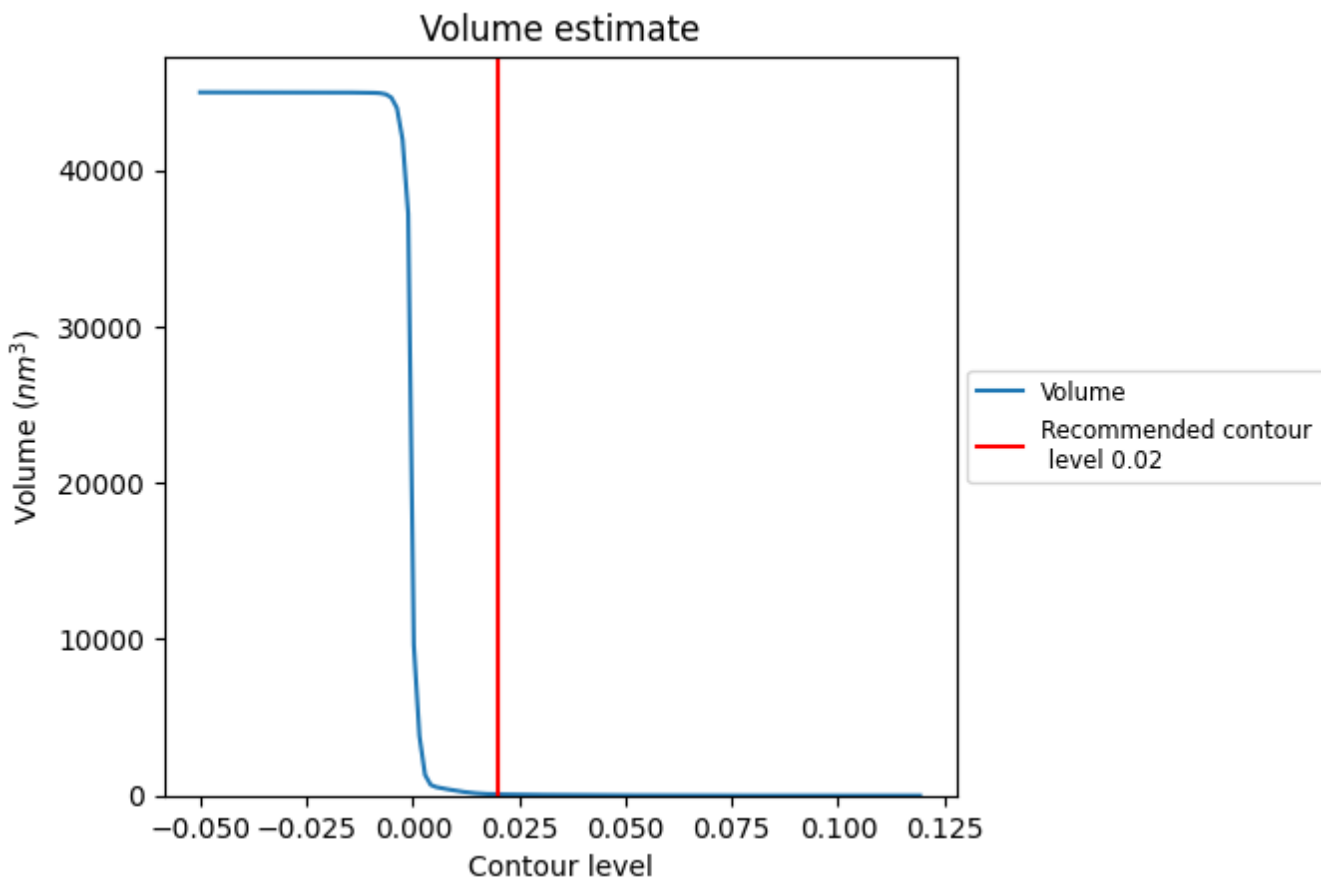
This section contains the results of statistical analysis of the map.

7.1 Map-value distribution [i](#)



The map-value distribution is plotted in 128 intervals along the x-axis. The y-axis is logarithmic. A spike in this graph at zero usually indicates that the volume has been masked.

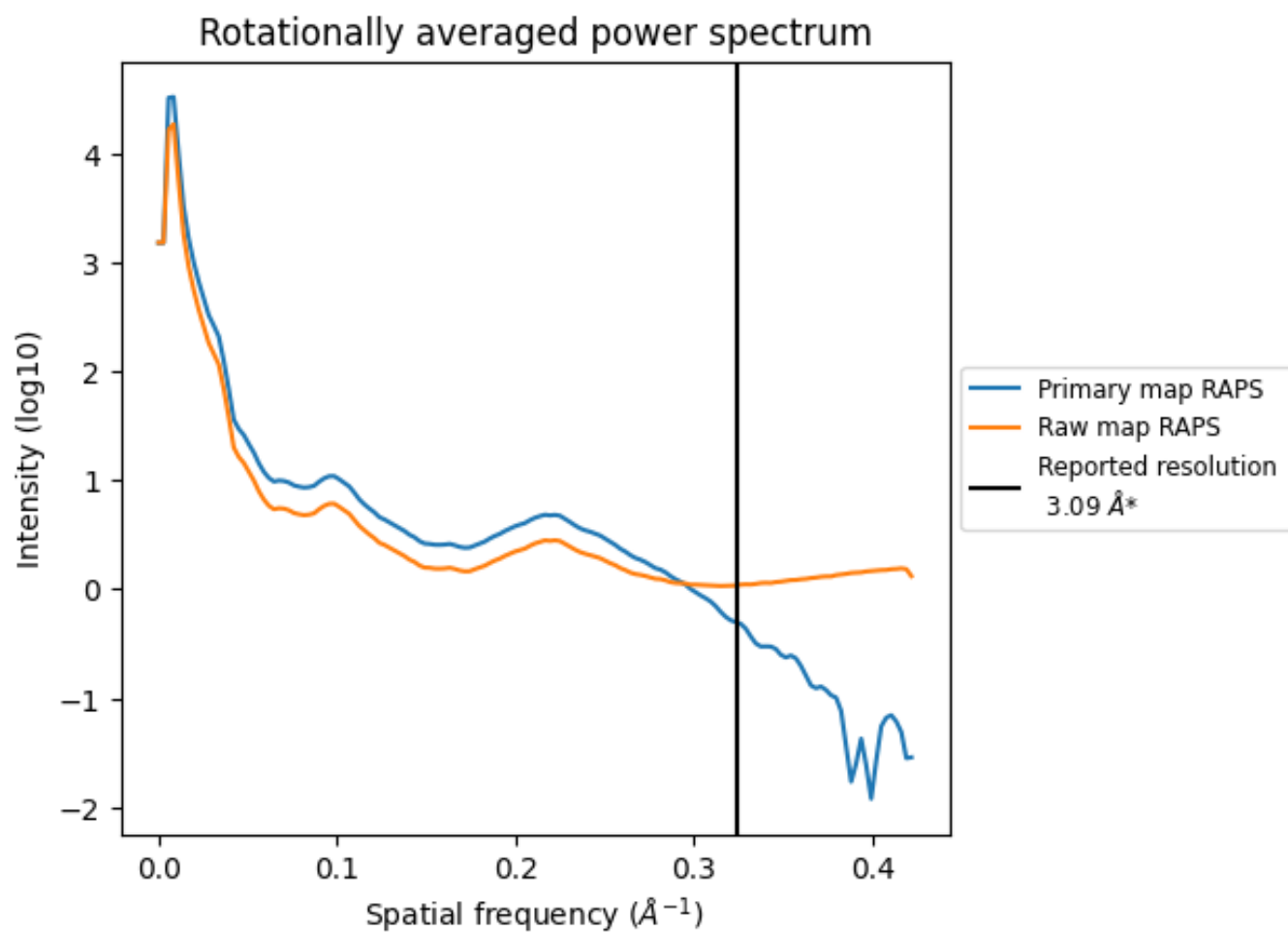
7.2 Volume estimate [\(i\)](#)



The volume at the recommended contour level is 81 nm³; this corresponds to an approximate mass of 73 kDa.

The volume estimate graph shows how the enclosed volume varies with the contour level. The recommended contour level is shown as a vertical line and the intersection between the line and the curve gives the volume of the enclosed surface at the given level.

7.3 Rotationally averaged power spectrum i

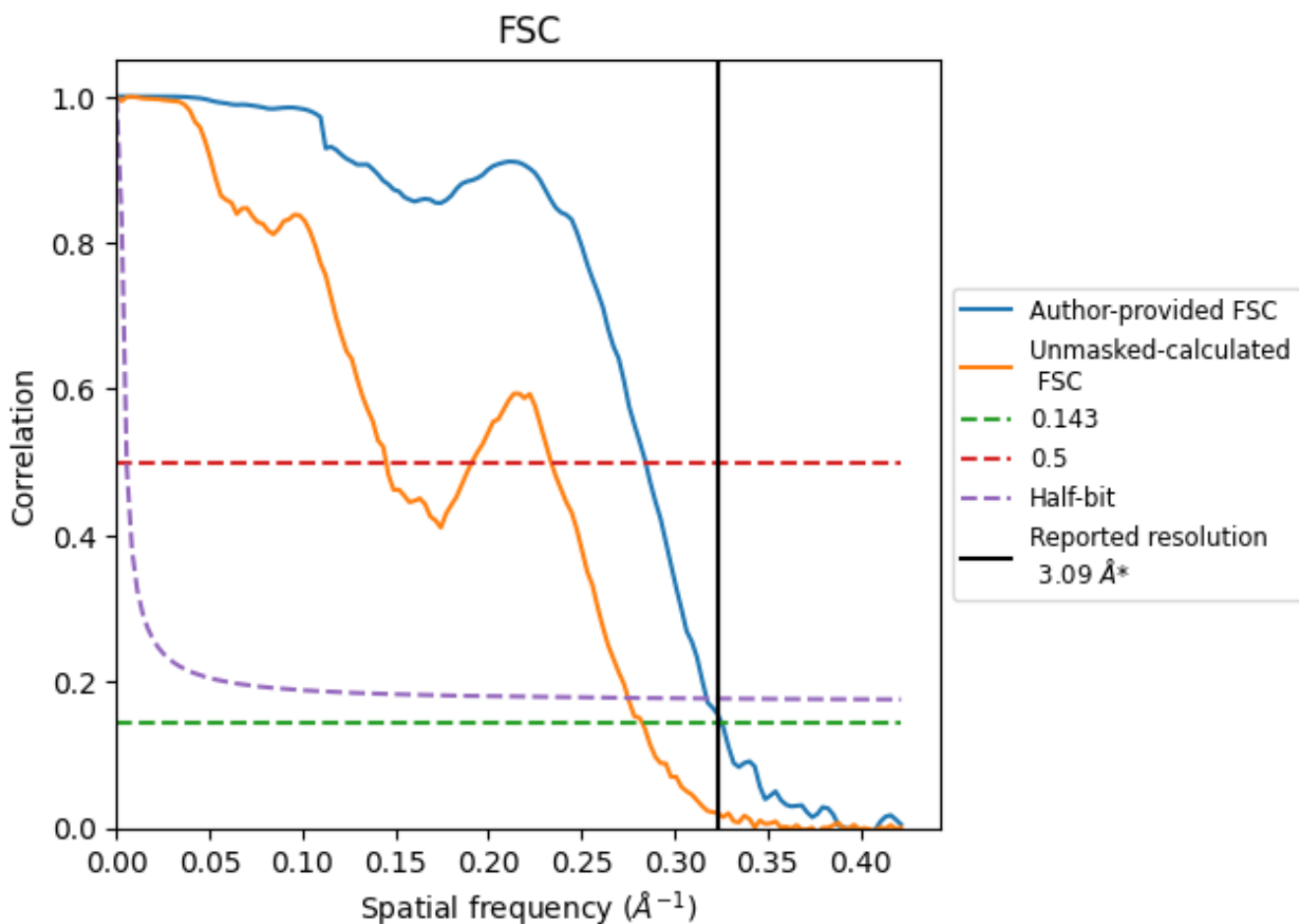


*Reported resolution corresponds to spatial frequency of 0.324 \AA^{-1}

8 Fourier-Shell correlation [i](#)

Fourier-Shell Correlation (FSC) is the most commonly used method to estimate the resolution of single-particle and subtomogram-averaged maps. The shape of the curve depends on the imposed symmetry, mask and whether or not the two 3D reconstructions used were processed from a common reference. The reported resolution is shown as a black line. A curve is displayed for the half-bit criterion in addition to lines showing the 0.143 gold standard cut-off and 0.5 cut-off.

8.1 FSC [i](#)



*Reported resolution corresponds to spatial frequency of 0.324 Å⁻¹

8.2 Resolution estimates [i](#)

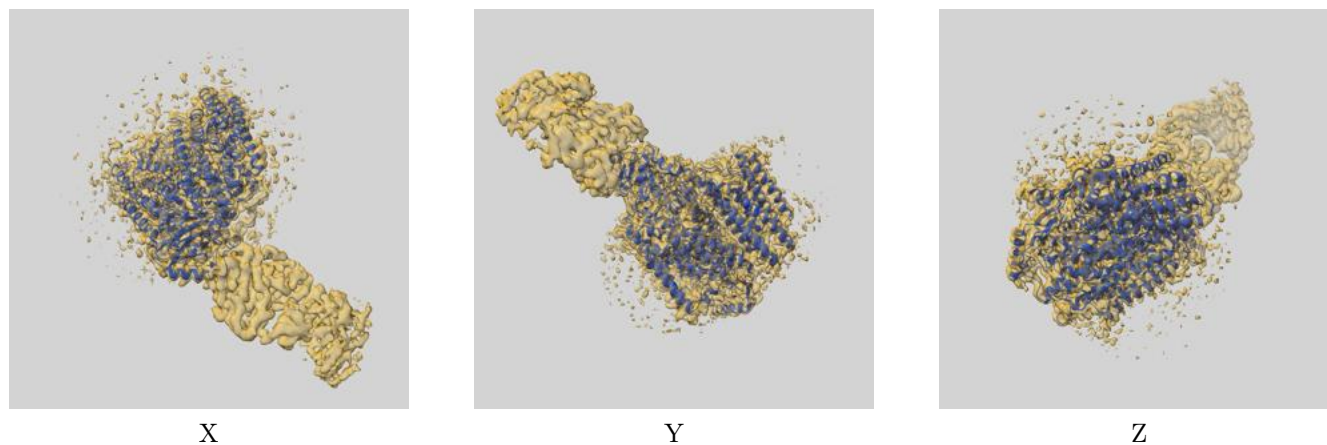
Resolution estimate (Å)	Estimation criterion (FSC cut-off)		
	0.143	0.5	Half-bit
Reported by author	3.09	-	-
Author-provided FSC curve	3.07	3.52	3.15
Unmasked-calculated*	3.54	6.90	3.64

*Resolution estimate based on FSC curve calculated by comparison of deposited half-maps. The value from deposited half-maps intersecting FSC 0.143 CUT-OFF 3.54 differs from the reported value 3.09 by more than 10 %

9 Map-model fit [i](#)

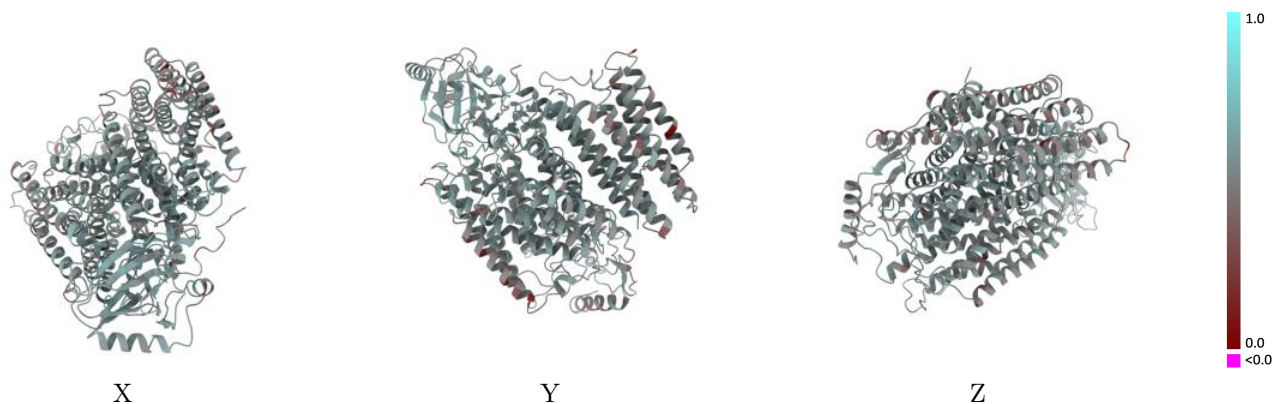
This section contains information regarding the fit between EMDB map EMD-33293 and PDB model 7XMC. Per-residue inclusion information can be found in section [3](#) on page [6](#).

9.1 Map-model overlay [i](#)



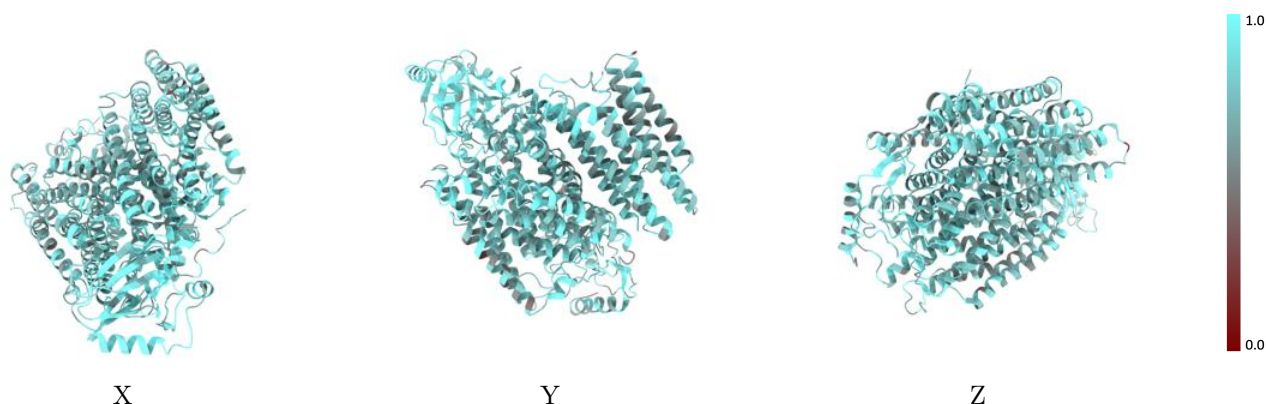
The images above show the 3D surface view of the map at the recommended contour level 0.02 at 50% transparency in yellow overlaid with a ribbon representation of the model coloured in blue. These images allow for the visual assessment of the quality of fit between the atomic model and the map.

9.2 Q-score mapped to coordinate model [\(i\)](#)



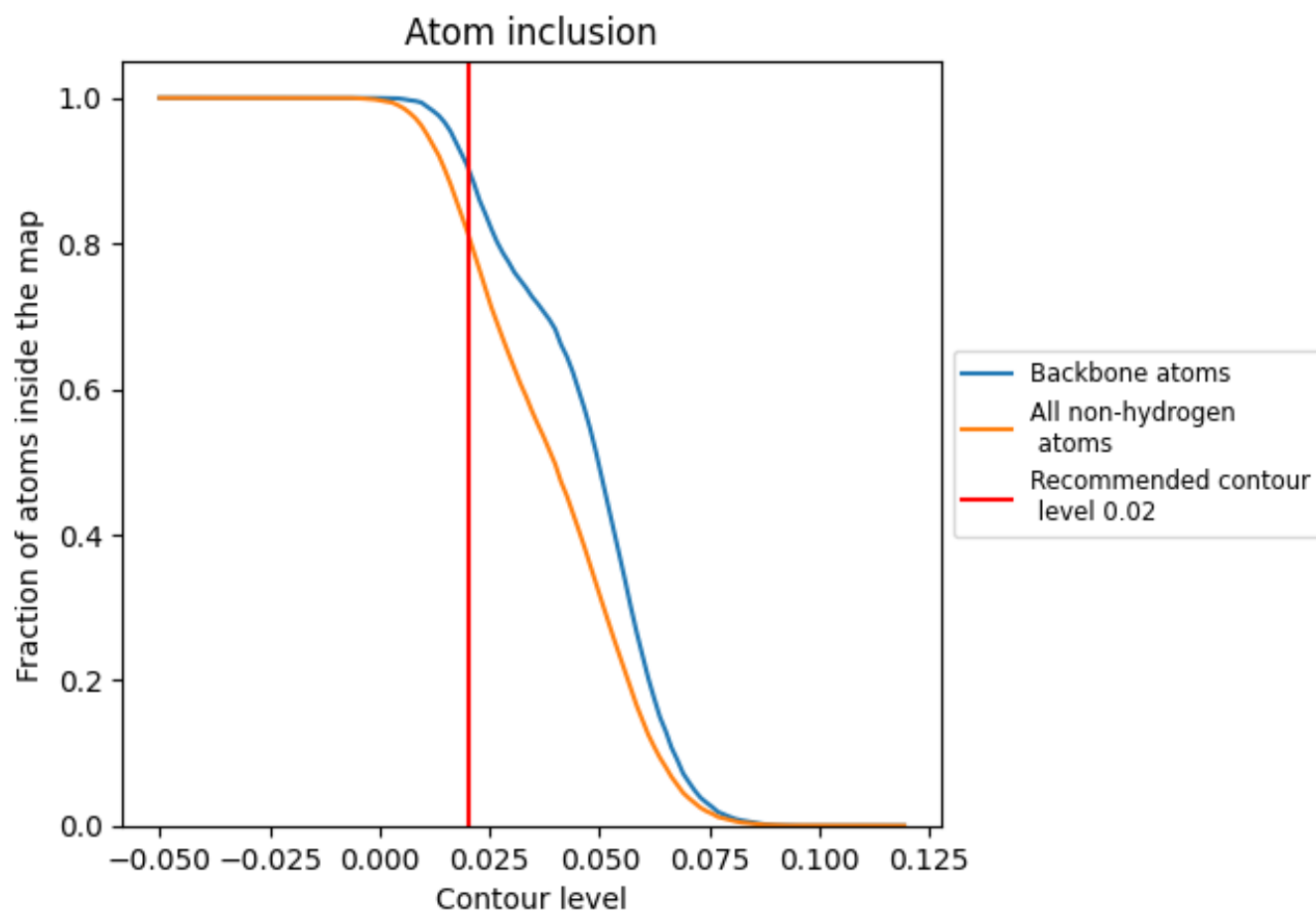
The images above show the model with each residue coloured according to its Q-score. This shows their resolvability in the map with higher Q-score values reflecting better resolvability. Please note: Q-score is calculating the resolvability of atoms, and thus high values are only expected at resolutions at which atoms can be resolved. Low Q-score values may therefore be expected for many entries.

9.3 Atom inclusion mapped to coordinate model [\(i\)](#)



The images above show the model with each residue coloured according to its atom inclusion. This shows to what extent they are inside the map at the recommended contour level (0.02).











9.4 Atom inclusion [i](#)



At the recommended contour level, 91% of all backbone atoms, 82% of all non-hydrogen atoms, are inside the map.

9.5 Map-model fit summary

The table lists the average atom inclusion at the recommended contour level (0.02) and Q-score for the entire model and for each chain.

Chain	Atom inclusion	Q-score
All	 0.8152	 0.5260
A	 0.8198	 0.5320
B	 0.8406	 0.5330
C	 0.7947	 0.5110
D	 0.7537	 0.4910

