



# Full wwPDB X-ray Structure Validation Report ⓘ

Nov 12, 2024 – 07:01 AM EST

PDB ID : 1XOE  
Title : N9 Tern influenza neuraminidase complexed with (2R,4R,5R)-5-(1-Acetylamino-3-methyl-butyl-pyrrolidine-2, 4-dicarboxylic acid 4-methyl ester) dase complexed with  
Authors : Wang, G.T.; Wang, S.; Gentles, R.; Sowin, T.; Maring, C.J.; Kempf, D.J.; Kati, W.M.; Stoll, V.; Stewart, K.D.; Laver, G.  
Deposited on : 2004-10-06  
Resolution : 2.20 Å (reported)

This is a Full wwPDB X-ray Structure Validation Report for a publicly released PDB entry.

We welcome your comments at [validation@mail.wwpdb.org](mailto:validation@mail.wwpdb.org)

A user guide is available at

<https://www.wwpdb.org/validation/2017/XrayValidationReportHelp>

with specific help available everywhere you see the ⓘ symbol.

The types of validation reports are described at

<http://www.wwpdb.org/validation/2017/FAQs#types>.

---

The following versions of software and data (see [references ⓘ](#)) were used in the production of this report:

MolProbity : 4.02b-467  
Mogul : 2022.3.0, CSD as543be (2022)  
Xtrriage (Phenix) : **NOT EXECUTED**  
EDS : **NOT EXECUTED**  
buster-report : 1.1.7 (2018)  
Percentile statistics : 20231227.v01 (using entries in the PDB archive December 27th 2023)  
Ideal geometry (proteins) : Engh & Huber (2001)  
Ideal geometry (DNA, RNA) : Parkinson et al. (1996)  
Validation Pipeline (wwPDB-VP) : 2.39

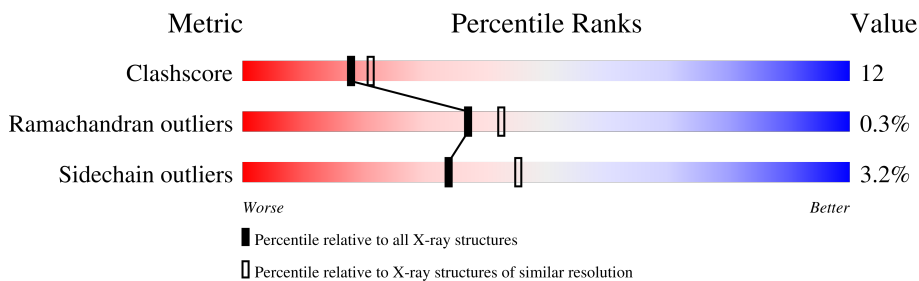
# 1 Overall quality at a glance

The following experimental techniques were used to determine the structure:

*X-RAY DIFFRACTION*

The reported resolution of this entry is 2.20 Å.

Percentile scores (ranging between 0-100) for global validation metrics of the entry are shown in the following graphic. The table shows the number of entries on which the scores are based.



Metric	Whole archive (#Entries)	Similar resolution (#Entries, resolution range(Å))
Clashscore	180529	6634 (2.20-2.20)
Ramachandran outliers	177936	6560 (2.20-2.20)
Sidechain outliers	177891	6561 (2.20-2.20)

The table below summarises the geometric issues observed across the polymeric chains and their fit to the electron density. The red, orange, yellow and green segments of the lower bar indicate the fraction of residues that contain outliers for  $\geq 3$ , 2, 1 and 0 types of geometric quality criteria respectively. A grey segment represents the fraction of residues that are not modelled. The numeric value for each fraction is indicated below the corresponding segment, with a dot representing fractions  $\leq 5\%$ .

Note EDS was not executed.

Mol	Chain	Length	Quality of chain
1	A	387	
2	B	6	

## 2 Entry composition [i](#)

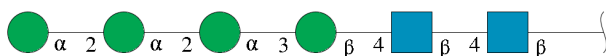
There are 6 unique types of molecules in this entry. The entry contains 3525 atoms, of which 0 are hydrogens and 0 are deuteriums.

In the tables below, the ZeroOcc column contains the number of atoms modelled with zero occupancy, the AltConf column contains the number of residues with at least one atom in alternate conformation and the Trace column contains the number of residues modelled with at most 2 atoms.

- Molecule 1 is a protein called Neuraminidase.

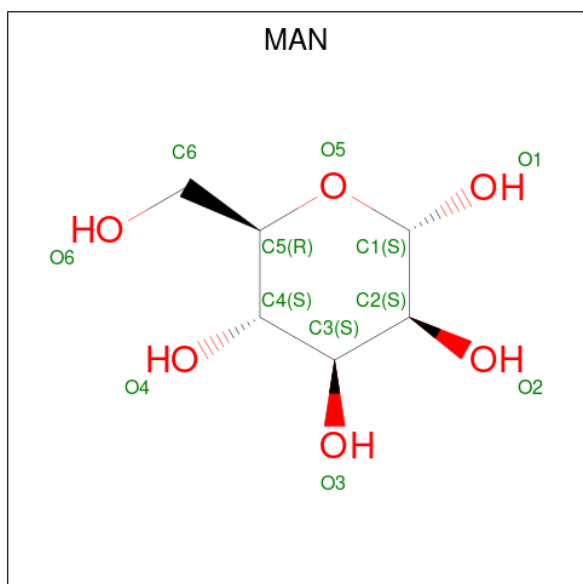
Mol	Chain	Residues	Atoms					ZeroOcc	AltConf	Trace
			Total	C	N	O	S			
1	A	387	3055	1908	534	590	23	0	0	0

- Molecule 2 is an oligosaccharide called alpha-D-mannopyranose-(1-2)-alpha-D-mannopyranose-(1-2)-alpha-D-mannopyranose-(1-3)-beta-D-mannopyranose-(1-4)-2-acetamido-2-deoxy-beta-D-glucopyranose-(1-4)-2-acetamido-2-deoxy-beta-D-glucopyranose.



Mol	Chain	Residues	Atoms				ZeroOcc	AltConf	Trace
			Total	C	N	O			
2	B	6	72	40	2	30	0	0	0

- Molecule 3 is alpha-D-mannopyranose (three-letter code: MAN) (formula: C<sub>6</sub>H<sub>12</sub>O<sub>6</sub>).



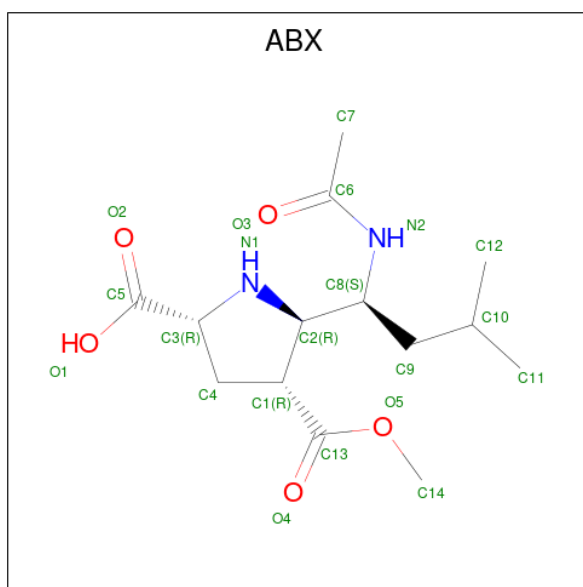
Mol	Chain	Residues	Atoms			ZeroOcc	AltConf
3	A	1	Total	C	O	0	0
			11	6	5		

- Molecule 4 is 2-acetamido-2-deoxy-beta-D-glucopyranose (three-letter code: NAG) (formula:  $C_8H_{15}NO_6$ ).



Mol	Chain	Residues	Atoms				ZeroOcc	AltConf
4	A	1	Total	C	N	O	0	0
			14	8	1	5		
4	A	1	Total	C	N	O	0	0
			14	8	1	5		

- Molecule 5 is 5-[1-(ACETYLAMINO)-3-METHYLBUTYL]-4-(METHOXYCARBONYL)P  
ROLINE (three-letter code: ABX) (formula:  $C_{14}H_{24}N_2O_5$ ).



Mol	Chain	Residues	Atoms				ZeroOcc	AltConf
			Total	C	N	O		
5	A	1	21	14	2	5	0	0

- Molecule 6 is water.

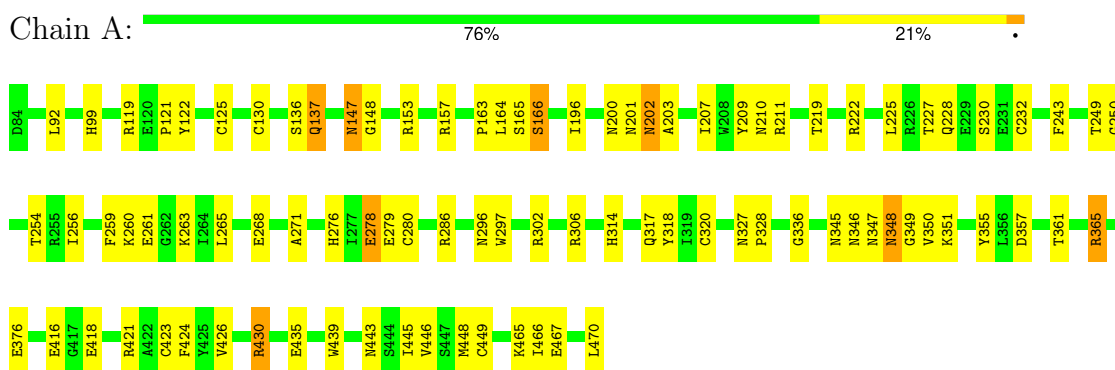
Mol	Chain	Residues	Atoms		ZeroOcc	AltConf
			Total	O		
6	A	338	338	338	0	0

### 3 Residue-property plots

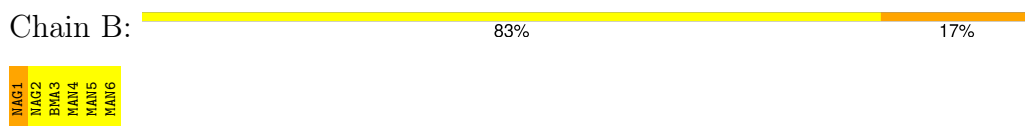
These plots are drawn for all protein, RNA, DNA and oligosaccharide chains in the entry. The first graphic for a chain summarises the proportions of the various outlier classes displayed in the second graphic. The second graphic shows the sequence view annotated by issues in geometry. Residues are color-coded according to the number of geometric quality criteria for which they contain at least one outlier: green = 0, yellow = 1, orange = 2 and red = 3 or more. Stretches of 2 or more consecutive residues without any outlier are shown as a green connector. Residues present in the sample, but not in the model, are shown in grey.

Note EDS was not executed.

- Molecule 1: Neuraminidase



- Molecule 2: alpha-D-mannopyranose-(1-2)-alpha-D-mannopyranose-(1-2)-alpha-D-mannopyranose-(1-3)-beta-D-mannopyranose-(1-4)-2-acetamido-2-deoxy-beta-D-glucopyranose-(1-4)-2-acetamido-2-deoxy-beta-D-glucopyranose



## 4 Data and refinement statistics

Xtrriage (Phenix) and EDS were not executed - this section is therefore incomplete.

Property	Value	Source
Space group	I 4 3 2	Depositor
Cell constants a, b, c, $\alpha$ , $\beta$ , $\gamma$	180.36Å 180.36Å 180.36Å 90.00° 90.00° 90.00°	Depositor
Resolution (Å)	9.99 – 2.20	Depositor
% Data completeness (in resolution range)	88.3 (9.99-2.20)	Depositor
$R_{merge}$	(Not available)	Depositor
$R_{sym}$	(Not available)	Depositor
Refinement program	CNX 2000	Depositor
R, $R_{free}$	0.265 , 0.315	Depositor
Estimated twinning fraction	No twinning to report.	Xtrriage
Total number of atoms	3525	wwPDB-VP
Average B, all atoms (Å <sup>2</sup> )	20.0	wwPDB-VP

## 5 Model quality [i](#)

### 5.1 Standard geometry [i](#)

Bond lengths and bond angles in the following residue types are not validated in this section: BMA, ABX, MAN, NAG

The Z score for a bond length (or angle) is the number of standard deviations the observed value is removed from the expected value. A bond length (or angle) with  $|Z| > 5$  is considered an outlier worth inspection. RMSZ is the root-mean-square of all Z scores of the bond lengths (or angles).

Mol	Chain	Bond lengths		Bond angles	
		RMSZ	# Z  >5	RMSZ	# Z  >5
1	A	0.37	0/3138	0.71	0/4276

There are no bond length outliers.

There are no bond angle outliers.

There are no chirality outliers.

There are no planarity outliers.

### 5.2 Too-close contacts [i](#)

In the following table, the Non-H and H(model) columns list the number of non-hydrogen atoms and hydrogen atoms in the chain respectively. The H(added) column lists the number of hydrogen atoms added and optimized by MolProbity. The Clashes column lists the number of clashes within the asymmetric unit, whereas Symm-Clashes lists symmetry-related clashes.

Mol	Chain	Non-H	H(model)	H(added)	Clashes	Symm-Clashes
1	A	3055	0	2883	75	0
2	B	72	0	61	2	0
3	A	11	0	10	0	0
4	A	28	0	26	1	0
5	A	21	0	23	0	0
6	A	338	0	0	1	0
All	All	3525	0	3003	75	0

The all-atom clashscore is defined as the number of clashes found per 1000 atoms (including hydrogen atoms). The all-atom clashscore for this structure is 12.

All (75) close contacts within the same asymmetric unit are listed below, sorted by their clash magnitude.



Atom-1	Atom-2	Interatomic distance (Å)	Clash overlap (Å)
1:A:348:ASN:HD22	1:A:349:GLY:H	1.28	0.82
1:A:317:GLN:HG2	1:A:318:TYR:H	1.46	0.80
1:A:348:ASN:ND2	1:A:349:GLY:H	1.83	0.76
1:A:430:ARG:HH12	1:A:466:ILE:HG12	1.53	0.72
1:A:250:GLY:HA2	1:A:297:TRP:CE3	2.25	0.70
1:A:136:SER:O	1:A:157:ARG:HD2	1.91	0.70
1:A:317:GLN:HG2	1:A:318:TYR:N	2.08	0.68
1:A:203:ALA:O	1:A:219:THR:HG23	1.94	0.67
1:A:430:ARG:HH11	1:A:430:ARG:HB3	1.61	0.66
1:A:196:ILE:HD13	1:A:225:LEU:HG	1.79	0.64
1:A:430:ARG:HH12	1:A:466:ILE:CG1	2.09	0.64
1:A:302:ARG:NH2	1:A:350:VAL:O	2.24	0.64
1:A:418:GLU:N	1:A:418:GLU:OE2	2.28	0.63
1:A:137:GLN:NE2	1:A:157:ARG:HD3	2.14	0.62
1:A:348:ASN:HD22	1:A:349:GLY:N	1.96	0.62
1:A:147:ASN:ND2	1:A:439:TRP:HB3	2.15	0.61
1:A:466:ILE:O	1:A:470:LEU:HD13	2.02	0.59
1:A:271:ALA:H	1:A:314:HIS:HE1	1.50	0.58
1:A:121:PRO:HB2	1:A:445:ILE:HD11	1.86	0.58
1:A:99:HIS:CE1	1:A:421:ARG:HH21	2.23	0.56
1:A:424:PHE:CZ	1:A:448:MET:HG3	2.41	0.56
1:A:268:GLU:OE2	1:A:314:HIS:HD2	1.89	0.56
1:A:201:ASN:O	1:A:222:ARG:NH2	2.39	0.55
1:A:348:ASN:ND2	1:A:349:GLY:N	2.55	0.55
1:A:263:LYS:HB2	1:A:263:LYS:NZ	2.22	0.53
1:A:202:ASN:ND2	2:B:1:NAG:C1	2.71	0.53
1:A:271:ALA:H	1:A:314:HIS:CE1	2.26	0.53
1:A:327:ASN:HA	1:A:328:PRO:C	2.27	0.53
1:A:228:GLN:HA	1:A:279:GLU:HA	1.90	0.53
1:A:465:LYS:HD3	1:A:467:GLU:HB2	1.91	0.52
1:A:122:TYR:CG	1:A:230:SER:HA	2.44	0.52
1:A:230:SER:HB3	1:A:351:LYS:HE2	1.91	0.52
1:A:163:PRO:O	1:A:166:SER:HB2	2.10	0.52
1:A:219:THR:HG22	1:A:225:LEU:HB2	1.92	0.51
1:A:99:HIS:CE1	1:A:449:CYS:HB2	2.46	0.51
1:A:153:ARG:HH21	1:A:200:ASN:HD21	1.58	0.51
1:A:92:LEU:HD12	1:A:357:ASP:HB2	1.93	0.50
1:A:99:HIS:HE1	1:A:421:ARG:HE	1.58	0.50
1:A:260:LYS:HB2	1:A:265:LEU:HD11	1.94	0.50
1:A:137:GLN:CD	1:A:157:ARG:HD3	2.31	0.50
1:A:430:ARG:HH11	1:A:430:ARG:CB	2.25	0.49
1:A:276:HIS:HB2	1:A:297:TRP:CD1	2.48	0.49

*Continued on next page...*

*Continued from previous page...*

Atom-1	Atom-2	Interatomic distance (Å)	Clash overlap (Å)
1:A:345:ASN:C	1:A:346:ASN:HD22	2.16	0.49
1:A:465:LYS:HZ2	1:A:467:GLU:HB2	1.79	0.47
1:A:426:VAL:HB	1:A:446:VAL:HG12	1.96	0.47
1:A:202:ASN:ND2	2:B:1:NAG:O5	2.48	0.47
1:A:423:CYS:HA	1:A:449:CYS:HA	1.96	0.46
1:A:243:PHE:O	1:A:254:THR:HG23	2.16	0.46
1:A:119:ARG:HA	1:A:443:ASN:ND2	2.30	0.45
1:A:365:ARG:HD2	1:A:376:GLU:OE1	2.16	0.45
1:A:250:GLY:HA2	1:A:297:TRP:CD2	2.51	0.45
1:A:125:CYS:HA	1:A:130:CYS:HA	2.00	0.44
1:A:228:GLN:HB3	1:A:280:CYS:O	2.17	0.44
1:A:430:ARG:NH1	1:A:466:ILE:HG12	2.28	0.44
1:A:430:ARG:HH12	1:A:466:ILE:CD1	2.31	0.44
1:A:320:CYS:O	1:A:336:GLY:HA3	2.17	0.44
1:A:211:ARG:HD2	6:A:637:HOH:O	2.17	0.43
1:A:467:GLU:N	1:A:467:GLU:CD	2.72	0.43
1:A:207:ILE:HG12	1:A:259:PHE:CE2	2.54	0.43
1:A:209:TYR:CZ	1:A:261:GLU:HA	2.54	0.42
1:A:430:ARG:NH1	1:A:435:GLU:OE1	2.51	0.42
1:A:147:ASN:C	1:A:147:ASN:HD22	2.22	0.42
1:A:286:ARG:HH11	1:A:286:ARG:HG2	1.84	0.42
1:A:164:LEU:O	1:A:165:SER:HB2	2.19	0.42
1:A:306:ARG:HH11	1:A:306:ARG:HG3	1.85	0.42
1:A:276:HIS:NE2	1:A:278:GLU:OE2	2.52	0.42
1:A:296:ASN:O	1:A:347:ASN:HA	2.19	0.42
1:A:347:ASN:O	1:A:348:ASN:HB2	2.19	0.42
1:A:147:ASN:OD1	4:A:508:NAG:N2	2.53	0.41
1:A:249:THR:HG22	1:A:347:ASN:HB3	2.02	0.41
1:A:355:TYR:O	1:A:361:THR:HG23	2.20	0.41
1:A:430:ARG:HA	1:A:430:ARG:HD2	1.62	0.41
1:A:467:GLU:N	1:A:467:GLU:OE1	2.52	0.41
1:A:256:ILE:HD12	1:A:256:ILE:N	2.36	0.40
1:A:147:ASN:HD22	1:A:148:GLY:N	2.19	0.40

There are no symmetry-related clashes.

## 5.3 Torsion angles [i](#)

### 5.3.1 Protein backbone [i](#)

In the following table, the Percentiles column shows the percent Ramachandran outliers of the chain as a percentile score with respect to all X-ray entries followed by that with respect to entries of similar resolution.

The Analysed column shows the number of residues for which the backbone conformation was analysed, and the total number of residues.

Mol	Chain	Analysed	Favoured	Allowed	Outliers	Percentiles
1	A	385/387 (100%)	355 (92%)	29 (8%)	1 (0%)	37 42

All (1) Ramachandran outliers are listed below:

Mol	Chain	Res	Type
1	A	202	ASN

### 5.3.2 Protein sidechains [i](#)

In the following table, the Percentiles column shows the percent sidechain outliers of the chain as a percentile score with respect to all X-ray entries followed by that with respect to entries of similar resolution.

The Analysed column shows the number of residues for which the sidechain conformation was analysed, and the total number of residues.

Mol	Chain	Analysed	Rotameric	Outliers	Percentiles
1	A	340/340 (100%)	329 (97%)	11 (3%)	34 45

All (11) residues with a non-rotameric sidechain are listed below:

Mol	Chain	Res	Type
1	A	137	GLN
1	A	147	ASN
1	A	166	SER
1	A	210	ASN
1	A	227	THR
1	A	232	CYS
1	A	278	GLU
1	A	348	ASN
1	A	365	ARG
1	A	416	GLU

*Continued on next page...*

*Continued from previous page...*

Mol	Chain	Res	Type
1	A	430	ARG

Sometimes sidechains can be flipped to improve hydrogen bonding and reduce clashes. All (9) such sidechains are listed below:

Mol	Chain	Res	Type
1	A	99	HIS
1	A	137	GLN
1	A	172	ASN
1	A	210	ASN
1	A	314	HIS
1	A	331	ASN
1	A	346	ASN
1	A	348	ASN
1	A	443	ASN

### 5.3.3 RNA [i](#)

There are no RNA molecules in this entry.

### 5.4 Non-standard residues in protein, DNA, RNA chains [i](#)

There are no non-standard protein/DNA/RNA residues in this entry.

### 5.5 Carbohydrates [i](#)

6 monosaccharides are modelled in this entry.

In the following table, the Counts columns list the number of bonds (or angles) for which Mogul statistics could be retrieved, the number of bonds (or angles) that are observed in the model and the number of bonds (or angles) that are defined in the Chemical Component Dictionary. The Link column lists molecule types, if any, to which the group is linked. The Z score for a bond length (or angle) is the number of standard deviations the observed value is removed from the expected value. A bond length (or angle) with  $|Z| > 2$  is considered an outlier worth inspection. RMSZ is the root-mean-square of all Z scores of the bond lengths (or angles).

Mol	Type	Chain	Res	Link	Bond lengths			Bond angles		
					Counts	RMSZ	# Z  > 2	Counts	RMSZ	# Z  > 2
2	NAG	B	1	2	14,14,15	1.47	2 (14%)	17,19,21	1.52	4 (23%)
2	NAG	B	2	2	14,14,15	1.08	1 (7%)	17,19,21	1.16	3 (17%)
2	BMA	B	3	2	11,11,12	0.84	0	15,15,17	1.11	1 (6%)

Mol	Type	Chain	Res	Link	Bond lengths			Bond angles		
					Counts	RMSZ	# Z  > 2	Counts	RMSZ	# Z  > 2
2	MAN	B	4	2	11,11,12	1.68	1 (9%)	15,15,17	2.00	4 (26%)
2	MAN	B	5	2	11,11,12	1.13	1 (9%)	15,15,17	1.15	1 (6%)
2	MAN	B	6	2	11,11,12	1.60	4 (36%)	15,15,17	1.19	1 (6%)

In the following table, the Chirals column lists the number of chiral outliers, the number of chiral centers analysed, the number of these observed in the model and the number defined in the Chemical Component Dictionary. Similar counts are reported in the Torsion and Rings columns. '-' means no outliers of that kind were identified.

Mol	Type	Chain	Res	Link	Chirals	Torsions	Rings
2	NAG	B	1	2	-	1/6/23/26	0/1/1/1
2	NAG	B	2	2	-	2/6/23/26	0/1/1/1
2	BMA	B	3	2	-	0/2/19/22	0/1/1/1
2	MAN	B	4	2	-	0/2/19/22	0/1/1/1
2	MAN	B	5	2	-	0/2/19/22	0/1/1/1
2	MAN	B	6	2	-	0/2/19/22	0/1/1/1

All (9) bond length outliers are listed below:

Mol	Chain	Res	Type	Atoms	Z	Observed(Å)	Ideal(Å)
2	B	4	MAN	C2-C3	4.58	1.59	1.52
2	B	1	NAG	C4-C5	4.49	1.62	1.53
2	B	5	MAN	O5-C1	2.78	1.48	1.43
2	B	2	NAG	C8-C7	2.54	1.55	1.50
2	B	6	MAN	O5-C5	2.50	1.48	1.43
2	B	6	MAN	C4-C3	2.49	1.58	1.52
2	B	6	MAN	O5-C1	2.49	1.47	1.43
2	B	6	MAN	C2-C3	2.44	1.56	1.52
2	B	1	NAG	C4-C3	2.02	1.57	1.52

All (14) bond angle outliers are listed below:

Mol	Chain	Res	Type	Atoms	Z	Observed(°)	Ideal(°)
2	B	4	MAN	C1-O5-C5	5.59	119.68	112.19
2	B	6	MAN	C1-O5-C5	4.03	117.59	112.19
2	B	1	NAG	C1-O5-C5	3.21	116.49	112.19
2	B	1	NAG	O7-C7-C8	-3.05	116.62	122.05
2	B	4	MAN	O2-C2-C1	-2.86	102.68	109.22
2	B	3	BMA	C1-C2-C3	-2.73	105.67	109.64
2	B	2	NAG	O7-C7-C8	-2.59	117.45	122.05
2	B	5	MAN	C2-C3-C4	-2.45	106.55	110.86

*Continued on next page...*

*Continued from previous page...*

Mol	Chain	Res	Type	Atoms	Z	Observed(°)	Ideal(°)
2	B	4	MAN	C3-C4-C5	-2.41	105.86	110.23
2	B	2	NAG	C4-C3-C2	-2.32	107.62	111.02
2	B	1	NAG	C4-C3-C2	-2.19	107.80	111.02
2	B	1	NAG	C2-N2-C7	-2.17	119.99	122.90
2	B	2	NAG	C8-C7-N2	2.09	119.59	116.12
2	B	4	MAN	O2-C2-C3	2.08	114.47	110.15

There are no chirality outliers.

All (3) torsion outliers are listed below:

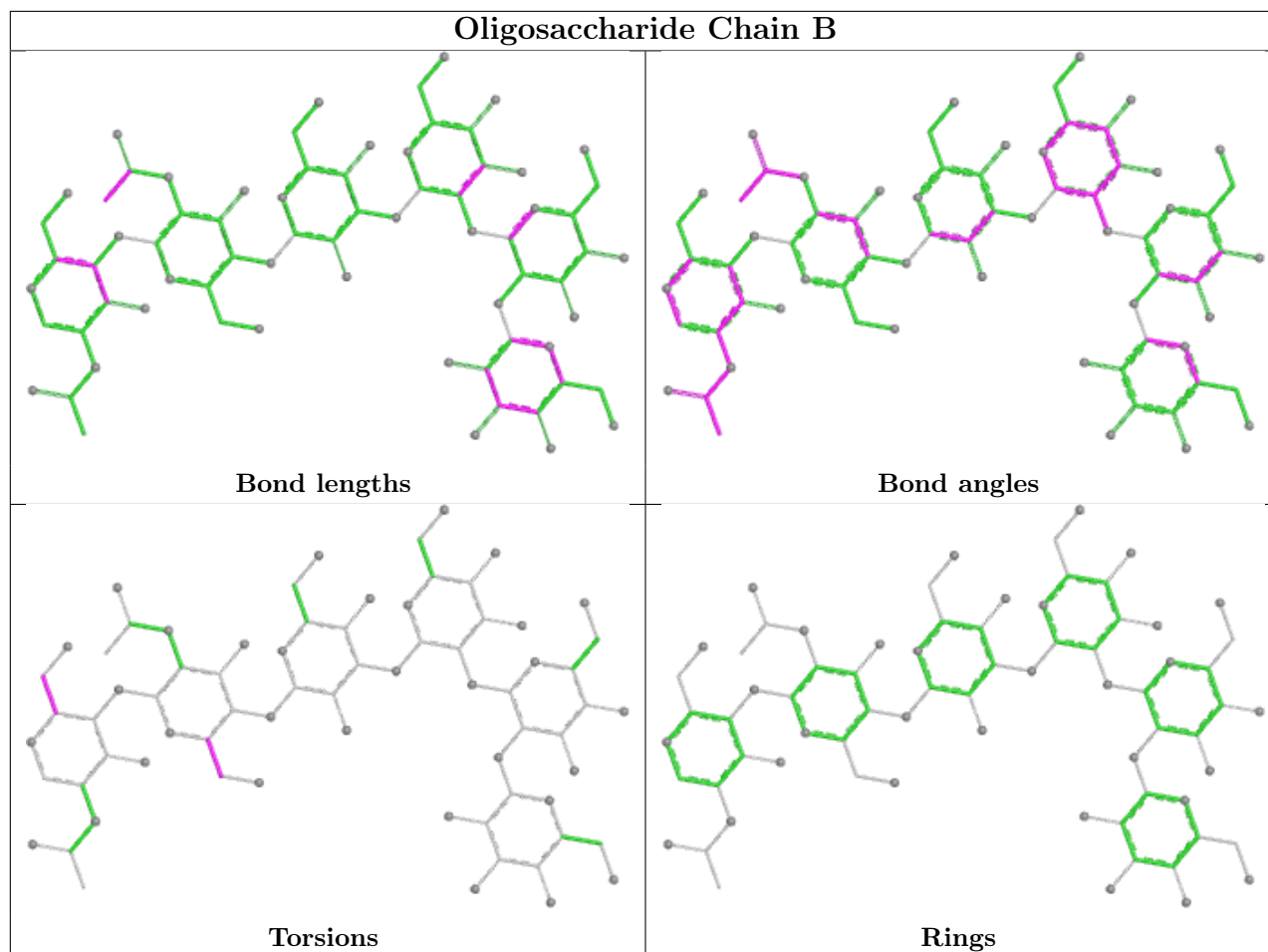
Mol	Chain	Res	Type	Atoms
2	B	2	NAG	C4-C5-C6-O6
2	B	1	NAG	C4-C5-C6-O6
2	B	2	NAG	O5-C5-C6-O6

There are no ring outliers.

1 monomer is involved in 2 short contacts:

Mol	Chain	Res	Type	Clashes	Symm-Clashes
2	B	1	NAG	2	0

The following is a two-dimensional graphical depiction of Mogul quality analysis of bond lengths, bond angles, torsion angles, and ring geometry for oligosaccharide.



## 5.6 Ligand geometry [i](#)

4 ligands are modelled in this entry.

In the following table, the Counts columns list the number of bonds (or angles) for which Mogul statistics could be retrieved, the number of bonds (or angles) that are observed in the model and the number of bonds (or angles) that are defined in the Chemical Component Dictionary. The Link column lists molecule types, if any, to which the group is linked. The Z score for a bond length (or angle) is the number of standard deviations the observed value is removed from the expected value. A bond length (or angle) with  $|Z| > 2$  is considered an outlier worth inspection. RMSZ is the root-mean-square of all Z scores of the bond lengths (or angles).

Mol	Type	Chain	Res	Link	Bond lengths			Bond angles		
					Counts	RMSZ	# Z  > 2	Counts	RMSZ	# Z  > 2
5	ABX	A	500	-	20,21,21	0.94	1 (5%)	24,29,29	1.06	2 (8%)
4	NAG	A	509	-	14,14,15	1.32	3 (21%)	17,19,21	0.96	1 (5%)
4	NAG	A	508	-	14,14,15	1.24	2 (14%)	17,19,21	1.10	1 (5%)
3	MAN	A	507	-	11,11,12	1.02	1 (9%)	15,15,17	1.78	2 (13%)

In the following table, the Chirals column lists the number of chiral outliers, the number of chiral centers analysed, the number of these observed in the model and the number defined in the Chemical Component Dictionary. Similar counts are reported in the Torsion and Rings columns. '-' means no outliers of that kind were identified.

Mol	Type	Chain	Res	Link	Chirals	Torsions	Rings
5	ABX	A	500	-	-	4/21/34/34	0/1/1/1
4	NAG	A	509	-	-	0/6/23/26	0/1/1/1
4	NAG	A	508	-	-	2/6/23/26	0/1/1/1
3	MAN	A	507	-	-	2/2/19/22	0/1/1/1

All (7) bond length outliers are listed below:

Mol	Chain	Res	Type	Atoms	Z	Observed(Å)	Ideal(Å)
4	A	509	NAG	C4-C5	2.41	1.58	1.53
4	A	508	NAG	O5-C5	2.35	1.48	1.43
3	A	507	MAN	O2-C2	-2.31	1.38	1.43
5	A	500	ABX	C9-C8	2.20	1.56	1.53
4	A	509	NAG	O5-C5	2.09	1.47	1.43
4	A	509	NAG	O4-C4	2.04	1.48	1.43
4	A	508	NAG	C4-C5	2.03	1.57	1.53

All (6) bond angle outliers are listed below:

Mol	Chain	Res	Type	Atoms	Z	Observed(°)	Ideal(°)
3	A	507	MAN	C1-O5-C5	5.43	119.46	112.19
4	A	508	NAG	C2-N2-C7	3.22	127.21	122.90
5	A	500	ABX	C10-C9-C8	-3.00	109.48	115.54
3	A	507	MAN	O2-C2-C1	-2.93	102.52	109.22
5	A	500	ABX	C14-O5-C13	2.20	120.91	115.92
4	A	509	NAG	C2-N2-C7	2.16	125.80	122.90

There are no chirality outliers.

All (8) torsion outliers are listed below:

Mol	Chain	Res	Type	Atoms
3	A	507	MAN	O5-C5-C6-O6
4	A	508	NAG	O5-C5-C6-O6
3	A	507	MAN	C4-C5-C6-O6
4	A	508	NAG	C4-C5-C6-O6
5	A	500	ABX	C2-C1-C13-O5
5	A	500	ABX	C4-C1-C13-O4
5	A	500	ABX	C4-C1-C13-O5

*Continued on next page...*



*Continued from previous page...*

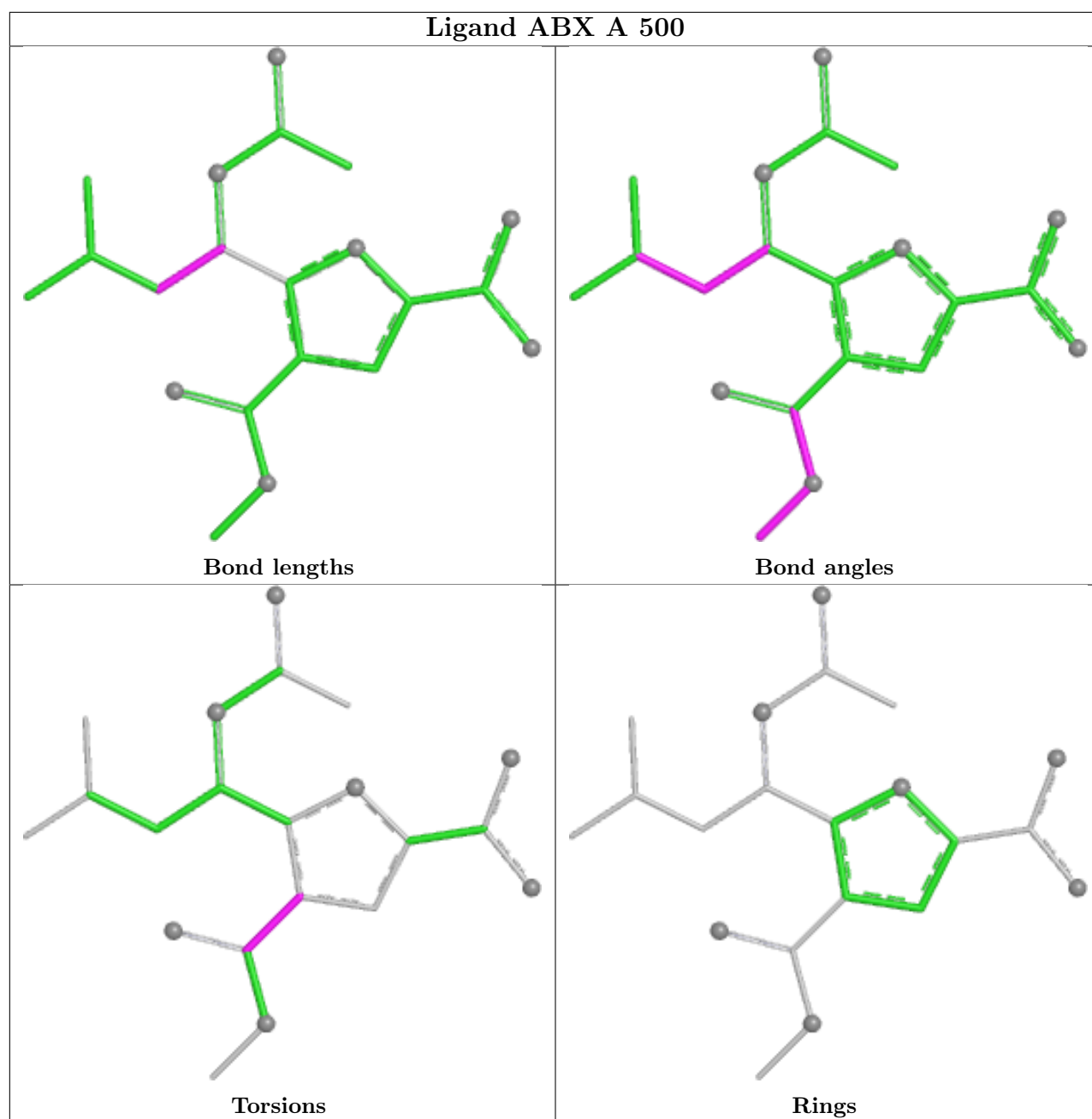
Mol	Chain	Res	Type	Atoms
5	A	500	ABX	C2-C1-C13-O4

There are no ring outliers.

1 monomer is involved in 1 short contact:

Mol	Chain	Res	Type	Clashes	Symm-Clashes
4	A	508	NAG	1	0

The following is a two-dimensional graphical depiction of Mogul quality analysis of bond lengths, bond angles, torsion angles, and ring geometry for all instances of the Ligand of Interest. In addition, ligands with molecular weight > 250 and outliers as shown on the validation Tables will also be included. For torsion angles, if less than 5% of the Mogul distribution of torsion angles is within 10 degrees of the torsion angle in question, then that torsion angle is considered an outlier. Any bond that is central to one or more torsion angles identified as an outlier by Mogul will be highlighted in the graph. For rings, the root-mean-square deviation (RMSD) between the ring in question and similar rings identified by Mogul is calculated over all ring torsion angles. If the average RMSD is greater than 60 degrees and the minimal RMSD between the ring in question and any Mogul-identified rings is also greater than 60 degrees, then that ring is considered an outlier. The outliers are highlighted in purple. The color gray indicates Mogul did not find sufficient equivalents in the CSD to analyse the geometry.



## 5.7 Other polymers [i](#)

There are no such residues in this entry.

## 5.8 Polymer linkage issues [i](#)

There are no chain breaks in this entry.

## 6 Fit of model and data

### 6.1 Protein, DNA and RNA chains

EDS was not executed - this section is therefore empty.

### 6.2 Non-standard residues in protein, DNA, RNA chains

EDS was not executed - this section is therefore empty.

### 6.3 Carbohydrates

EDS was not executed - this section is therefore empty.

### 6.4 Ligands

EDS was not executed - this section is therefore empty.

### 6.5 Other polymers

EDS was not executed - this section is therefore empty.