



Full wwPDB X-ray Structure Validation Report ⓘ

Sep 17, 2023 – 11:17 PM EDT

PDB ID : 4XP9
Title : X-ray structure of Drosophila dopamine transporter bound to psychostimulant D-amphetamine
Authors : Aravind, P.; Wang, K.; Gouaux, E.
Deposited on : 2015-01-16
Resolution : 2.80 Å(reported)

This is a Full wwPDB X-ray Structure Validation Report for a publicly released PDB entry.

We welcome your comments at validation@mail.wwpdb.org

A user guide is available at

<https://www.wwpdb.org/validation/2017/XrayValidationReportHelp>

with specific help available everywhere you see the ⓘ symbol.

The types of validation reports are described at

<http://www.wwpdb.org/validation/2017/FAQs#types>.

The following versions of software and data (see [references ⓘ](#)) were used in the production of this report:

MolProbity : 4.02b-467
Mogul : 1.8.5 (274361), CSD as541be (2020)
Xtriage (Phenix) : 1.13
EDS : 2.35.1
buster-report : 1.1.7 (2018)
Percentile statistics : 20191225.v01 (using entries in the PDB archive December 25th 2019)
Refmac : 5.8.0158
CCP4 : 7.0.044 (Gargrove)
Ideal geometry (proteins) : Engh & Huber (2001)
Ideal geometry (DNA, RNA) : Parkinson et al. (1996)
Validation Pipeline (wwPDB-VP) : 2.35.1

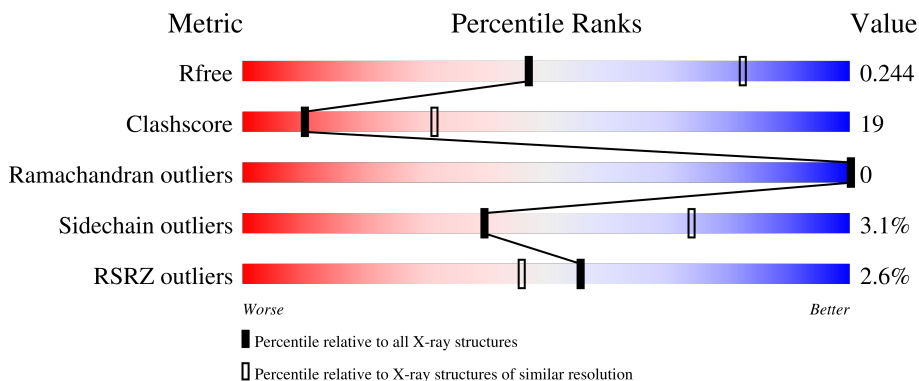
1 Overall quality at a glance i

The following experimental techniques were used to determine the structure:

X-RAY DIFFRACTION

The reported resolution of this entry is 2.80 Å.

Percentile scores (ranging between 0-100) for global validation metrics of the entry are shown in the following graphic. The table shows the number of entries on which the scores are based.



Metric	Whole archive (#Entries)	Similar resolution (#Entries, resolution range(Å))
R_{free}	130704	3140 (2.80-2.80)
Clashscore	141614	3569 (2.80-2.80)
Ramachandran outliers	138981	3498 (2.80-2.80)
Sidechain outliers	138945	3500 (2.80-2.80)
RSRZ outliers	127900	3078 (2.80-2.80)

The table below summarises the geometric issues observed across the polymeric chains and their fit to the electron density. The red, orange, yellow and green segments of the lower bar indicate the fraction of residues that contain outliers for ≥ 3 , 2, 1 and 0 types of geometric quality criteria respectively. A grey segment represents the fraction of residues that are not modelled. The numeric value for each fraction is indicated below the corresponding segment, with a dot representing fractions $\leq 5\%$. The upper red bar (where present) indicates the fraction of residues that have poor fit to the electron density. The numeric value is given above the bar.

Mol	Chain	Length	Quality of chain
1	C	541	<div style="display: flex; align-items: center;"> <div style="width: 2%; height: 10px; background-color: red; margin-right: 2px;"></div> <div style="width: 69%; height: 10px; background-color: green; margin-right: 2px;"></div> <div style="width: 29%; height: 10px; background-color: yellow; margin-right: 2px;"></div> <div style="width: 1%; height: 10px; background-color: grey; margin-right: 2px;"></div> </div> <p style="margin-left: 20px;">2% 69% 29% ..</p>
2	L	213	<div style="display: flex; align-items: center;"> <div style="width: 0%; height: 10px; background-color: red; margin-right: 2px;"></div> <div style="width: 69%; height: 10px; background-color: green; margin-right: 2px;"></div> <div style="width: 30%; height: 10px; background-color: yellow; margin-right: 2px;"></div> <div style="width: 1%; height: 10px; background-color: grey; margin-right: 2px;"></div> </div> <p style="margin-left: 20px;">% 69% 30% .</p>
3	H	219	<div style="display: flex; align-items: center;"> <div style="width: 5%; height: 10px; background-color: red; margin-right: 2px;"></div> <div style="width: 71%; height: 10px; background-color: green; margin-right: 2px;"></div> <div style="width: 28%; height: 10px; background-color: yellow; margin-right: 2px;"></div> <div style="width: 0%; height: 10px; background-color: grey; margin-right: 2px;"></div> </div> <p style="margin-left: 20px;">5% 71% 28%</p>
4	A	2	<div style="display: flex; align-items: center;"> <div style="width: 50%; height: 10px; background-color: yellow; margin-right: 2px;"></div> <div style="width: 50%; height: 10px; background-color: orange; margin-right: 2px;"></div> </div> <p style="margin-left: 20px;">50% 50%</p>

2 Entry composition

There are 13 unique types of molecules in this entry. The entry contains 7701 atoms, of which 36 are hydrogens and 0 are deuteriums.

In the tables below, the ZeroOcc column contains the number of atoms modelled with zero occupancy, the AltConf column contains the number of residues with at least one atom in alternate conformation and the Trace column contains the number of residues modelled with at most 2 atoms.

- Molecule 1 is a protein called Transporter.

Mol	Chain	Residues	Atoms					ZeroOcc	AltConf	Trace
			Total	C	N	O	S			
1	C	537	4229	2835	655	721	18	0	0	0

There are 48 discrepancies between the modelled and reference sequences:

Chain	Residue	Modelled	Actual	Comment	Reference
C	74	ALA	VAL	engineered mutation	UNP A0A0B4KEX2
C	?	-	SER	deletion	UNP A0A0B4KEX2
C	?	-	GLN	deletion	UNP A0A0B4KEX2
C	?	-	ASN	deletion	UNP A0A0B4KEX2
C	?	-	ALA	deletion	UNP A0A0B4KEX2
C	?	-	SER	deletion	UNP A0A0B4KEX2
C	?	-	ARG	deletion	UNP A0A0B4KEX2
C	?	-	VAL	deletion	UNP A0A0B4KEX2
C	?	-	PRO	deletion	UNP A0A0B4KEX2
C	?	-	VAL	deletion	UNP A0A0B4KEX2
C	?	-	ILE	deletion	UNP A0A0B4KEX2
C	?	-	GLY	deletion	UNP A0A0B4KEX2
C	?	-	ASN	deletion	UNP A0A0B4KEX2
C	?	-	TYR	deletion	UNP A0A0B4KEX2
C	?	-	SER	deletion	UNP A0A0B4KEX2
C	?	-	ASP	deletion	UNP A0A0B4KEX2
C	?	-	LEU	deletion	UNP A0A0B4KEX2
C	?	-	TYR	deletion	UNP A0A0B4KEX2
C	?	-	ALA	deletion	UNP A0A0B4KEX2
C	?	-	MET	deletion	UNP A0A0B4KEX2
C	?	-	GLY	deletion	UNP A0A0B4KEX2
C	?	-	ASN	deletion	UNP A0A0B4KEX2
C	?	-	GLN	deletion	UNP A0A0B4KEX2
C	?	-	SER	deletion	UNP A0A0B4KEX2
C	?	-	LEU	deletion	UNP A0A0B4KEX2
C	?	-	LEU	deletion	UNP A0A0B4KEX2
C	?	-	TYR	deletion	UNP A0A0B4KEX2

Continued on next page...

Continued from previous page...

Chain	Residue	Modelled	Actual	Comment	Reference
C	?	-	ASN	deletion	UNP A0A0B4KEX2
C	?	-	GLU	deletion	UNP A0A0B4KEX2
C	?	-	THR	deletion	UNP A0A0B4KEX2
C	?	-	TYR	deletion	UNP A0A0B4KEX2
C	?	-	MET	deletion	UNP A0A0B4KEX2
C	?	-	ASN	deletion	UNP A0A0B4KEX2
C	?	-	GLY	deletion	UNP A0A0B4KEX2
C	?	-	SER	deletion	UNP A0A0B4KEX2
C	?	-	SER	deletion	UNP A0A0B4KEX2
C	?	-	LEU	deletion	UNP A0A0B4KEX2
C	?	-	ASP	deletion	UNP A0A0B4KEX2
C	?	-	THR	deletion	UNP A0A0B4KEX2
C	?	-	SER	deletion	UNP A0A0B4KEX2
C	?	-	ALA	deletion	UNP A0A0B4KEX2
C	?	-	VAL	deletion	UNP A0A0B4KEX2
C	415	ALA	LEU	engineered mutation	UNP A0A0B4KEX2
C	602	LEU	-	expression tag	UNP A0A0B4KEX2
C	603	LEU	-	expression tag	UNP A0A0B4KEX2
C	604	VAL	-	expression tag	UNP A0A0B4KEX2
C	605	PRO	-	expression tag	UNP A0A0B4KEX2
C	606	ARG	-	expression tag	UNP A0A0B4KEX2

- Molecule 2 is a protein called ANTIBODY FRAGMENT HEAVY CHAIN-PROTEIN, 9D5-HEAVY CHAIN.

Mol	Chain	Residues	Atoms					ZeroOcc	AltConf	Trace
			Total	C	N	O	S			
2	L	213	1615	1005	267	335	8	0	0	0

- Molecule 3 is a protein called ANTIBODY FRAGMENT LIGHT CHAIN-PROTEIN, 9D5-LIGHT CHAIN.

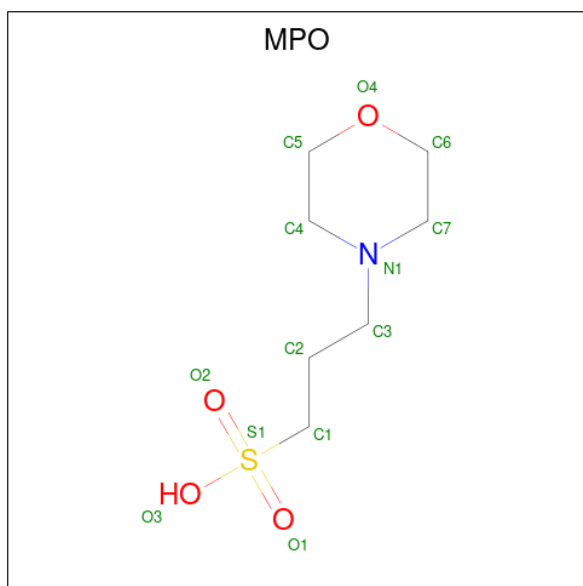
Mol	Chain	Residues	Atoms					ZeroOcc	AltConf	Trace
			Total	C	N	O	S			
3	H	219	1640	1031	277	324	8	0	0	0

- Molecule 4 is an oligosaccharide called alpha-D-glucopyranose-(1-4)-alpha-D-glucopyranose.



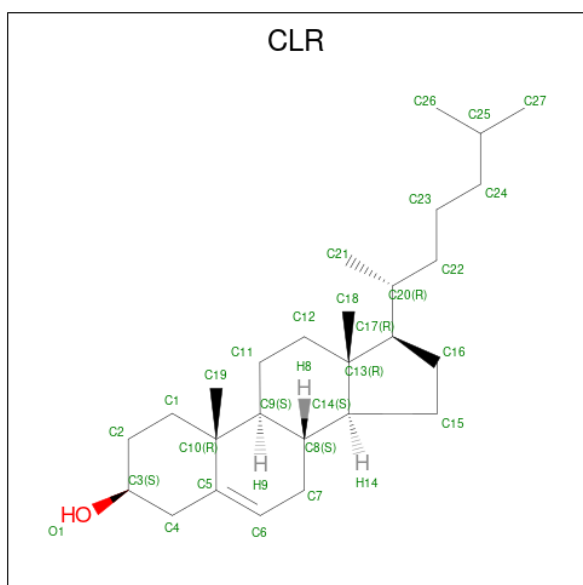
Mol	Chain	Residues	Atoms				ZeroOcc	AltConf
			Total	C	N	O		
6	C	1	14	8	1	5	0	0

- Molecule 7 is 3[N-MORPHOLINO]PROPANE SULFONIC ACID (three-letter code: MPO) (formula: C₇H₁₅NO₄S).



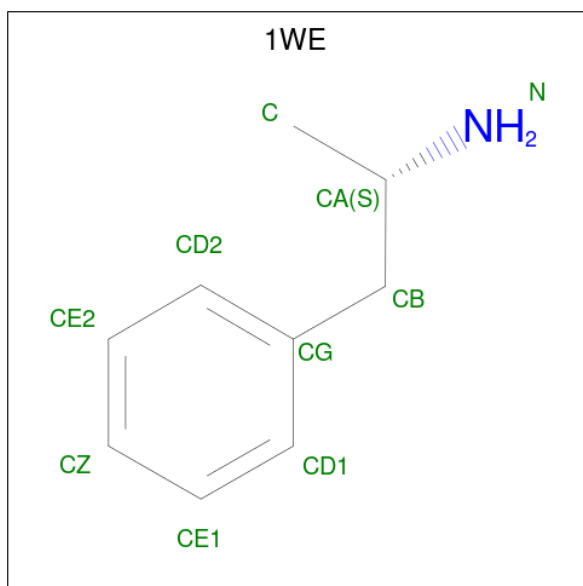
Mol	Chain	Residues	Atoms					ZeroOcc	AltConf
			Total	C	N	O	S		
7	C	1	13	7	1	4	1	0	0

- Molecule 8 is CHOLESTEROL (three-letter code: CLR) (formula: C₂₇H₄₆O).



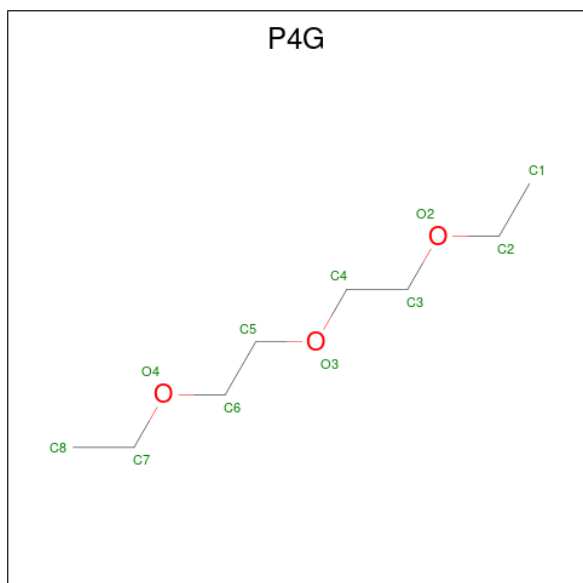
Mol	Chain	Residues	Atoms			ZeroOcc	AltConf
8	C	1	Total	C	O	0	0
			28	27	1		

- Molecule 9 is (2S)-1-phenylpropan-2-amine (three-letter code: 1WE) (formula: C₉H₁₃N).



Mol	Chain	Residues	Atoms			ZeroOcc	AltConf
9	C	1	Total	C	N	0	0
			10	9	1		

- Molecule 10 is 1-ETHOXY-2-(2-ETHOXYETHOXY)ETHANE (three-letter code: P4G) (formula: C₈H₁₈O₃).



Mol	Chain	Residues	Atoms			ZeroOcc	AltConf	
10	C	1	Total	C	H	O	0	0
			29	8	18	3		
10	C	1	Total	C	H	O	0	0
			29	8	18	3		

- Molecule 11 is SODIUM ION (three-letter code: NA) (formula: Na).

Mol	Chain	Residues	Atoms		ZeroOcc	AltConf
11	C	2	Total	Na	0	0
			2	2		

- Molecule 12 is CHLORIDE ION (three-letter code: CL) (formula: Cl).

Mol	Chain	Residues	Atoms		ZeroOcc	AltConf
12	C	1	Total	Cl	0	0
			1	1		

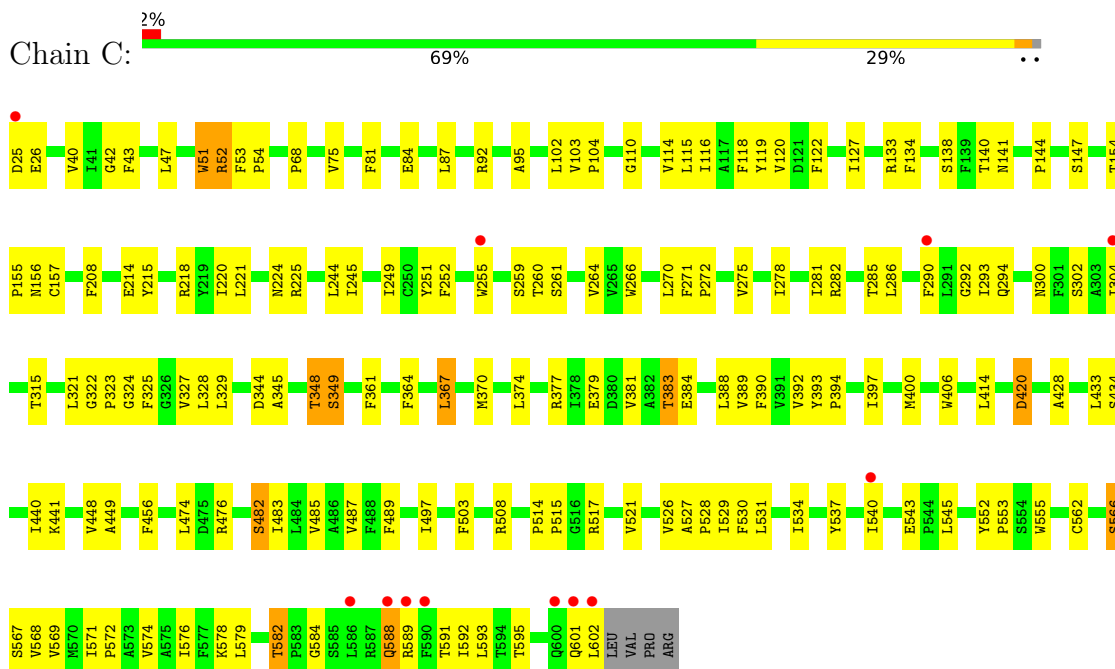
- Molecule 13 is water.

Mol	Chain	Residues	Atoms		ZeroOcc	AltConf
13	C	16	Total	O	0	0
			16	16		
13	L	9	Total	O	0	0
			9	9		
13	H	8	Total	O	0	0
			8	8		

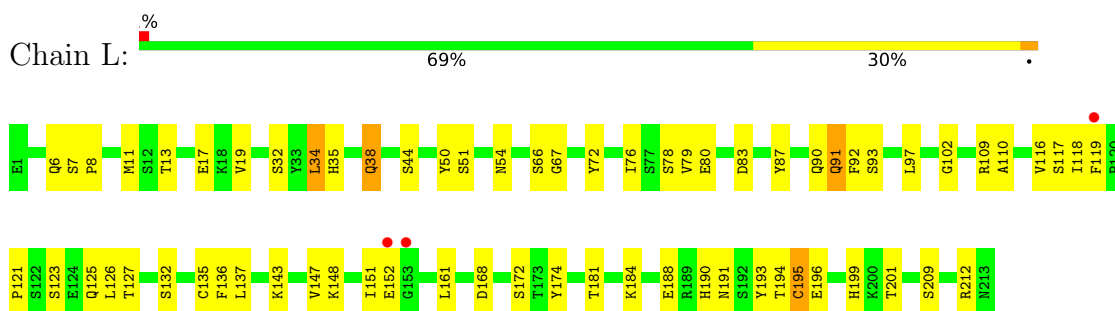
3 Residue-property plots i

These plots are drawn for all protein, RNA, DNA and oligosaccharide chains in the entry. The first graphic for a chain summarises the proportions of the various outlier classes displayed in the second graphic. The second graphic shows the sequence view annotated by issues in geometry and electron density. Residues are color-coded according to the number of geometric quality criteria for which they contain at least one outlier: green = 0, yellow = 1, orange = 2 and red = 3 or more. A red dot above a residue indicates a poor fit to the electron density ($RSRZ > 2$). Stretches of 2 or more consecutive residues without any outlier are shown as a green connector. Residues present in the sample, but not in the model, are shown in grey.

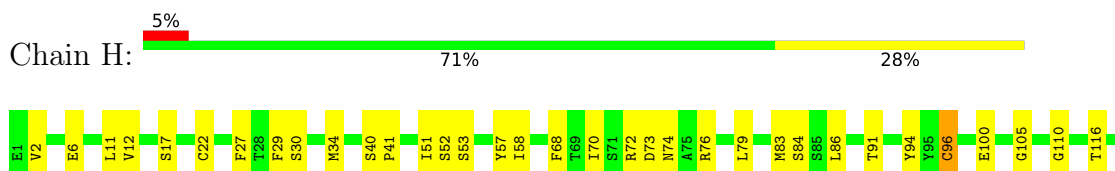
- Molecule 1: Transporter

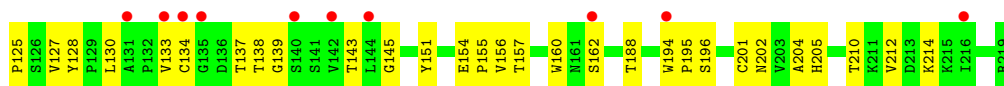


- Molecule 2: ANTIBODY FRAGMENT HEAVY CHAIN-PROTEIN, 9D5-HEAVY CHAIN



- Molecule 3: ANTIBODY FRAGMENT LIGHT CHAIN-PROTEIN, 9D5-LIGHT CHAIN





- Molecule 4: alpha-D-glucopyranose-(1-4)-alpha-D-glucopyranose

Chain A:  50% 50%

GLC1
GLC2

4 Data and refinement statistics

Property	Value	Source
Space group	P 21 21 21	Depositor
Cell constants a, b, c, α , β , γ	97.35Å 140.75Å 166.76Å 90.00° 90.00° 90.00°	Depositor
Resolution (Å)	46.72 – 2.80 46.72 – 2.80	Depositor EDS
% Data completeness (in resolution range)	96.8 (46.72-2.80) 96.6 (46.72-2.80)	Depositor EDS
R_{merge}	(Not available)	Depositor
R_{sym}	(Not available)	Depositor
$\langle I/\sigma(I) \rangle$ ¹	1.17 (at 2.81Å)	Xtrriage
Refinement program	PHENIX	Depositor
R, R_{free}	0.211 , 0.242 0.216 , 0.244	Depositor DCC
R_{free} test set	2700 reflections (4.87%)	wwPDB-VP
Wilson B-factor (Å ²)	86.2	Xtrriage
Anisotropy	0.049	Xtrriage
Bulk solvent k_{sol} (e/Å ³), B_{sol} (Å ²)	0.32 , 62.6	EDS
L-test for twinning ²	$\langle L \rangle = 0.50$, $\langle L^2 \rangle = 0.34$	Xtrriage
Estimated twinning fraction	No twinning to report.	Xtrriage
F_o, F_c correlation	0.93	EDS
Total number of atoms	7701	wwPDB-VP
Average B, all atoms (Å ²)	85.0	wwPDB-VP

Xtrriage's analysis on translational NCS is as follows: *The largest off-origin peak in the Patterson function is 4.29% of the height of the origin peak. No significant pseudotranslation is detected.*

¹Intensities estimated from amplitudes.

²Theoretical values of $\langle |L| \rangle$, $\langle L^2 \rangle$ for acentric reflections are 0.5, 0.333 respectively for untwinned datasets, and 0.375, 0.2 for perfectly twinned datasets.

5 Model quality

5.1 Standard geometry

Bond lengths and bond angles in the following residue types are not validated in this section: 1WE, MPO, CL, NAG, NA, P4G, Y01, GLC, CLR

The Z score for a bond length (or angle) is the number of standard deviations the observed value is removed from the expected value. A bond length (or angle) with $|Z| > 5$ is considered an outlier worth inspection. RMSZ is the root-mean-square of all Z scores of the bond lengths (or angles).

Mol	Chain	Bond lengths		Bond angles	
		RMSZ	# Z >5	RMSZ	# Z >5
1	C	0.40	0/4371	0.53	0/5977
2	L	0.39	0/1653	0.58	0/2248
3	H	0.40	0/1679	0.60	0/2289
All	All	0.40	0/7703	0.56	0/10514

There are no bond length outliers.

There are no bond angle outliers.

There are no chirality outliers.

There are no planarity outliers.

5.2 Too-close contacts

In the following table, the Non-H and H(model) columns list the number of non-hydrogen atoms and hydrogen atoms in the chain respectively. The H(added) column lists the number of hydrogen atoms added and optimized by MolProbity. The Clashes column lists the number of clashes within the asymmetric unit, whereas Symm-Clashes lists symmetry-related clashes.

Mol	Chain	Non-H	H(model)	H(added)	Clashes	Symm-Clashes
1	C	4229	0	4130	157	0
2	L	1615	0	1523	61	0
3	H	1640	0	1585	70	0
4	A	23	0	21	4	0
5	C	35	0	49	2	0
6	C	14	0	13	1	0
7	C	13	0	14	1	0
8	C	28	0	46	0	0
9	C	10	0	13	2	0
10	C	22	36	36	1	0

Continued on next page...

Continued from previous page...

Mol	Chain	Non-H	H(model)	H(added)	Clashes	Symm-Clashes
11	C	2	0	0	0	0
12	C	1	0	0	0	0
13	C	16	0	0	2	0
13	H	8	0	0	0	0
13	L	9	0	0	0	0
All	All	7665	36	7430	283	0

The all-atom clashscore is defined as the number of clashes found per 1000 atoms (including hydrogen atoms). The all-atom clashscore for this structure is 19.

All (283) close contacts within the same asymmetric unit are listed below, sorted by their clash magnitude.

Atom-1	Atom-2	Interatomic distance (Å)	Clash overlap (Å)
2:L:121:PRO:HB2	2:L:126:LEU:HD11	1.37	1.05
2:L:92:PHE:HE2	3:H:105:GLY:HA2	1.23	1.02
3:H:137:THR:HA	3:H:138:THR:HG23	1.48	0.96
3:H:138:THR:HB	3:H:139:GLY:HA3	1.48	0.94
1:C:133:ARG:HH22	4:A:1:GLC:H62	1.33	0.93
2:L:194:THR:HG23	2:L:209:SER:HB2	1.50	0.91
2:L:92:PHE:CE2	3:H:105:GLY:HA2	2.05	0.91
3:H:138:THR:HB	3:H:139:GLY:CA	2.02	0.88
1:C:102:LEU:HD23	1:C:103:VAL:HG23	1.56	0.86
1:C:315:THR:HG22	1:C:534:ILE:HG23	1.58	0.86
2:L:32:SER:HA	2:L:51:SER:HB2	1.56	0.86
1:C:154:THR:HG22	1:C:156:ASN:H	1.42	0.84
1:C:252:PHE:HA	1:C:255:TRP:CD1	2.13	0.84
1:C:278:ILE:HG22	1:C:406:TRP:HZ3	1.43	0.84
3:H:137:THR:CA	3:H:138:THR:HG23	2.09	0.83
3:H:83:MET:HB3	3:H:86:LEU:HD21	1.61	0.82
2:L:132:SER:HB3	2:L:181:THR:HG22	1.60	0.82
1:C:489:PHE:HD2	1:C:571:ILE:HD13	1.42	0.81
1:C:370:MET:HG2	1:C:374:LEU:HD12	1.63	0.79
3:H:51:ILE:HD13	3:H:72:ARG:HB2	1.66	0.78
3:H:137:THR:HG23	3:H:138:THR:OG1	1.84	0.76
1:C:43:PHE:HE2	1:C:322:GLY:HA3	1.50	0.75
3:H:29:PHE:O	3:H:72:ARG:NH2	2.20	0.75
1:C:134:PHE:CE1	1:C:220:ILE:HG13	2.22	0.74
1:C:487:VAL:HG12	1:C:531:LEU:HD11	1.68	0.74
1:C:133:ARG:NH2	4:A:1:GLC:H62	2.02	0.74
2:L:151:ILE:HB	2:L:190:HIS:CD2	2.24	0.72
3:H:137:THR:HA	3:H:138:THR:CG2	2.17	0.72

Continued on next page...

Continued from previous page...

Atom-1	Atom-2	Interatomic distance (Å)	Clash overlap (Å)
1:C:324:GLY:HA3	1:C:487:VAL:HG22	1.69	0.72
3:H:137:THR:CB	3:H:138:THR:HG23	2.19	0.72
1:C:134:PHE:HE1	1:C:220:ILE:HG13	1.55	0.72
1:C:251:TYR:CE1	1:C:448:VAL:HG23	2.25	0.72
1:C:370:MET:HE1	1:C:392:VAL:CG1	2.20	0.71
1:C:527:ALA:HB3	1:C:528:PRO:HD3	1.72	0.71
1:C:286:LEU:HD11	1:C:400:MET:HE1	1.71	0.71
2:L:188:GLU:HG2	2:L:212:ARG:HH22	1.55	0.70
1:C:154:THR:HG23	1:C:155:PRO:HD2	1.72	0.70
1:C:420:ASP:OD2	13:C:801:HOH:O	2.10	0.69
1:C:286:LEU:HD11	1:C:400:MET:CE	2.22	0.69
2:L:123:SER:O	2:L:127:THR:HG23	1.93	0.69
2:L:199:HIS:CE1	2:L:201:THR:HG23	2.27	0.69
1:C:364:PHE:HA	1:C:367:LEU:HB2	1.76	0.68
1:C:476:ARG:HD3	1:C:545:LEU:HD13	1.74	0.68
2:L:19:VAL:HG22	2:L:76:ILE:HB	1.76	0.68
1:C:476:ARG:NH2	1:C:543:GLU:O	2.22	0.68
1:C:43:PHE:CE2	1:C:322:GLY:HA3	2.30	0.66
3:H:154:GLU:HG3	3:H:155:PRO:HA	1.77	0.66
2:L:121:PRO:HB2	2:L:126:LEU:CD1	2.19	0.65
2:L:19:VAL:HG13	2:L:79:VAL:HG21	1.78	0.65
2:L:19:VAL:HG13	2:L:79:VAL:CG2	2.26	0.64
1:C:25:ASP:OD1	1:C:26:GLU:HA	1.98	0.64
1:C:115:LEU:HD11	1:C:567:SER:HB3	1.80	0.64
1:C:252:PHE:HA	1:C:255:TRP:HD1	1.60	0.64
1:C:115:LEU:HA	1:C:118:PHE:HB3	1.79	0.64
1:C:579:LEU:HD23	1:C:593:LEU:CD1	2.28	0.64
1:C:154:THR:HG22	1:C:156:ASN:N	2.12	0.64
2:L:17:GLU:O	2:L:79:VAL:HG23	1.97	0.63
1:C:293:ILE:HD12	1:C:361:PHE:HD1	1.62	0.63
2:L:143:LYS:HD2	2:L:174:TYR:CE1	2.34	0.63
1:C:42:GLY:O	1:C:420:ASP:HB2	1.99	0.62
3:H:162:SER:HA	3:H:202:ASN:HD21	1.63	0.62
1:C:292:GLY:HA3	1:C:364:PHE:O	2.00	0.62
1:C:293:ILE:HD12	1:C:361:PHE:CD1	2.35	0.62
3:H:138:THR:HB	3:H:139:GLY:O	2.00	0.62
1:C:537:TYR:HA	1:C:540:ILE:HG22	1.82	0.61
1:C:115:LEU:CD1	1:C:567:SER:HB3	2.31	0.61
1:C:393:TYR:HB3	1:C:394:PRO:HD3	1.81	0.61
1:C:487:VAL:HG12	1:C:531:LEU:CD1	2.30	0.61
1:C:154:THR:HB	1:C:214:GLU:OE2	2.00	0.61

Continued on next page...

Continued from previous page...

Atom-1	Atom-2	Interatomic distance (Å)	Clash overlap (Å)
1:C:315:THR:HG22	1:C:534:ILE:CG2	2.30	0.61
3:H:17:SER:HB3	3:H:84:SER:HA	1.83	0.61
1:C:224:ASN:OD1	1:C:225:ARG:HG3	2.01	0.60
1:C:517:ARG:O	1:C:521:VAL:HG23	2.01	0.60
3:H:30:SER:HA	3:H:74:ASN:OD1	2.01	0.60
3:H:91:THR:HG23	3:H:116:THR:HA	1.84	0.60
2:L:188:GLU:HA	2:L:212:ARG:NH1	2.16	0.59
1:C:579:LEU:HD23	1:C:593:LEU:HD12	1.84	0.59
2:L:19:VAL:CG1	2:L:79:VAL:HG21	2.33	0.59
1:C:47:LEU:HD13	1:C:127:ILE:HG21	1.84	0.59
1:C:53:PHE:HB3	1:C:54:PRO:HD3	1.84	0.59
2:L:136:PHE:C	2:L:137:LEU:HD12	2.23	0.59
1:C:87:LEU:HD11	1:C:102:LEU:CD1	2.32	0.58
2:L:126:LEU:O	2:L:184:LYS:HD3	2.03	0.58
1:C:434:SER:N	1:C:440:ILE:HD11	2.19	0.58
1:C:602:LEU:O	1:C:602:LEU:HD12	2.04	0.58
1:C:244:LEU:HB2	1:C:456:PHE:CE1	2.38	0.58
2:L:152:GLU:N	2:L:190:HIS:NE2	2.50	0.58
2:L:188:GLU:HG2	2:L:212:ARG:NH2	2.17	0.58
3:H:156:VAL:HG12	3:H:205:HIS:CD2	2.39	0.57
1:C:574:VAL:O	1:C:578:LYS:HG2	2.03	0.57
1:C:290:PHE:O	1:C:294:GLN:HG3	2.04	0.57
1:C:110:GLY:O	1:C:114:VAL:HG23	2.05	0.57
2:L:11:MET:CE	2:L:19:VAL:HB	2.35	0.56
2:L:125:GLN:HG3	3:H:128:TYR:CE2	2.41	0.56
3:H:133:VAL:HG12	3:H:134:CYS:N	2.20	0.56
3:H:157:THR:HB	3:H:204:ALA:HB3	1.86	0.56
1:C:134:PHE:HE2	1:C:390:PHE:HB3	1.71	0.56
3:H:52:SER:OG	3:H:57:TYR:HB2	2.06	0.56
3:H:83:MET:HE1	3:H:94:TYR:CZ	2.41	0.56
1:C:92:ARG:HG2	1:C:92:ARG:HH21	1.72	0.55
1:C:433:LEU:C	1:C:440:ILE:HD11	2.27	0.55
2:L:34:LEU:HD22	2:L:72:TYR:CD1	2.41	0.55
1:C:434:SER:HA	1:C:440:ILE:HD11	1.88	0.55
1:C:116:ILE:O	1:C:120:VAL:HG23	2.05	0.55
1:C:393:TYR:CE2	1:C:397:ILE:HD11	2.42	0.55
1:C:75:VAL:HB	1:C:526:VAL:HG11	1.89	0.54
1:C:282:ARG:HD2	1:C:282:ARG:O	2.08	0.54
3:H:130:LEU:HB2	3:H:145:GLY:C	2.27	0.54
1:C:489:PHE:CD2	1:C:571:ILE:HD13	2.33	0.54
1:C:562:CYS:O	1:C:566:SER:HB3	2.07	0.53

Continued on next page...

Continued from previous page...

Atom-1	Atom-2	Interatomic distance (Å)	Clash overlap (Å)
3:H:130:LEU:HB2	3:H:145:GLY:CA	2.38	0.53
2:L:132:SER:CB	2:L:181:THR:HG22	2.35	0.53
2:L:151:ILE:HB	2:L:190:HIS:HD2	1.69	0.53
1:C:589:ARG:HA	1:C:592:ILE:HG22	1.90	0.53
1:C:95:ALA:HA	1:C:329:LEU:HD23	1.90	0.53
1:C:574:VAL:HG22	10:C:707:P4G:H72	1.90	0.53
1:C:345:ALA:O	1:C:349:SER:OG	2.24	0.53
1:C:115:LEU:HA	1:C:118:PHE:CB	2.39	0.53
3:H:138:THR:HB	3:H:139:GLY:C	2.29	0.53
1:C:278:ILE:CG2	1:C:406:TRP:HZ3	2.19	0.53
1:C:43:PHE:CD1	1:C:327:VAL:HG11	2.43	0.53
2:L:91:GLN:HG3	2:L:93:SER:H	1.74	0.53
1:C:51:TRP:HH2	1:C:127:ILE:HD13	1.73	0.52
2:L:190:HIS:ND1	2:L:191:ASN:N	2.55	0.52
1:C:154:THR:CG2	1:C:156:ASN:H	2.17	0.52
1:C:244:LEU:HB2	1:C:456:PHE:HE1	1.74	0.52
1:C:133:ARG:HH12	4:A:1:GLC:C6	2.23	0.52
1:C:377:ARG:HD3	1:C:379:GLU:OE2	2.10	0.52
1:C:572:PRO:O	1:C:576:ILE:HG12	2.10	0.52
3:H:34:MET:HG2	3:H:72:ARG:HH12	1.74	0.52
1:C:508:ARG:NE	3:H:100:GLU:O	2.37	0.52
2:L:152:GLU:HG2	2:L:190:HIS:CE1	2.44	0.52
1:C:52:ARG:NH1	1:C:384:GLU:OE1	2.42	0.51
1:C:282:ARG:O	1:C:286:LEU:HG	2.10	0.51
2:L:11:MET:HE1	2:L:19:VAL:HB	1.91	0.51
2:L:109:ARG:NH1	2:L:110:ALA:O	2.43	0.51
3:H:143:THR:HA	3:H:188:THR:HG22	1.92	0.51
1:C:95:ALA:HA	1:C:329:LEU:CD2	2.41	0.51
3:H:127:VAL:CG2	3:H:212:VAL:HG11	2.41	0.51
1:C:251:TYR:CE1	1:C:449:ALA:HB2	2.45	0.51
2:L:152:GLU:CD	2:L:190:HIS:CE1	2.85	0.51
1:C:218:ARG:HG2	1:C:224:ASN:HD22	1.76	0.50
3:H:11:LEU:HD12	3:H:12:VAL:H	1.77	0.50
3:H:68:PHE:CE1	3:H:83:MET:HG2	2.47	0.50
1:C:40:VAL:HG11	1:C:348:THR:HG21	1.94	0.50
2:L:118:ILE:HD12	2:L:195:CYS:HB3	1.91	0.50
2:L:161:LEU:C	2:L:161:LEU:HD23	2.32	0.50
3:H:154:GLU:HG3	3:H:155:PRO:CA	2.42	0.50
1:C:315:THR:CG2	1:C:534:ILE:HG23	2.34	0.50
1:C:325:PHE:HD2	9:C:706:1WE:H13	1.76	0.50
1:C:133:ARG:HH12	4:A:1:GLC:H61	1.77	0.50

Continued on next page...

Continued from previous page...

Atom-1	Atom-2	Interatomic distance (Å)	Clash overlap (Å)
1:C:367:LEU:HD12	1:C:370:MET:CE	2.42	0.50
1:C:157:CYS:HB2	1:C:214:GLU:OE1	2.11	0.49
1:C:582:THR:CB	1:C:589:ARG:HD2	2.42	0.49
3:H:138:THR:CB	3:H:139:GLY:HA3	2.27	0.49
2:L:6:GLN:OE1	2:L:102:GLY:N	2.34	0.49
1:C:344:ASP:O	1:C:348:THR:HB	2.11	0.49
1:C:569:VAL:O	1:C:572:PRO:HD2	2.11	0.49
2:L:151:ILE:HG22	2:L:193:TYR:CD1	2.48	0.49
1:C:489:PHE:CD2	1:C:571:ILE:HG21	2.48	0.49
3:H:6:GLU:OE2	3:H:110:GLY:HA3	2.12	0.49
1:C:434:SER:CA	1:C:440:ILE:HD11	2.42	0.49
3:H:2:VAL:HG22	3:H:27:PHE:HB3	1.94	0.49
1:C:245:ILE:O	1:C:249:ILE:HG13	2.13	0.49
2:L:90:GLN:HG2	2:L:91:GLN:N	2.28	0.49
3:H:51:ILE:CD1	3:H:72:ARG:HB2	2.41	0.49
1:C:266:TRP:O	1:C:270:LEU:HB2	2.12	0.48
1:C:260:THR:O	1:C:264:VAL:HG23	2.13	0.48
1:C:482:SER:O	1:C:485:VAL:HG22	2.12	0.48
1:C:584:GLY:HA3	1:C:588:GLN:HG2	1.95	0.48
1:C:588:GLN:O	1:C:588:GLN:HG3	2.12	0.48
3:H:30:SER:O	3:H:53:SER:HB2	2.13	0.48
1:C:251:TYR:O	1:C:255:TRP:HD1	1.97	0.48
2:L:119:PHE:CD2	3:H:130:LEU:HB3	2.48	0.48
3:H:137:THR:OG1	3:H:138:THR:HG23	2.12	0.48
2:L:125:GLN:HG3	3:H:128:TYR:CZ	2.48	0.48
3:H:73:ASP:OD2	3:H:76:ARG:HB2	2.13	0.48
3:H:137:THR:HG23	3:H:138:THR:CG2	2.43	0.48
1:C:87:LEU:HD13	1:C:503:PHE:CE1	2.49	0.48
1:C:591:THR:O	1:C:595:THR:HG23	2.14	0.47
1:C:81:PHE:CZ	1:C:348:THR:CG2	2.97	0.47
1:C:545:LEU:HG	1:C:552:TYR:CD2	2.48	0.47
1:C:553:PRO:HB2	1:C:555:TRP:CD1	2.49	0.47
3:H:137:THR:HG23	3:H:138:THR:CB	2.43	0.47
2:L:168:ASP:O	2:L:172:SER:HA	2.14	0.47
3:H:51:ILE:HG13	3:H:58:ILE:CD1	2.45	0.47
1:C:68:PRO:HD3	1:C:304:ILE:HD12	1.95	0.47
1:C:325:PHE:CE1	1:C:483:ILE:HG12	2.50	0.47
2:L:13:THR:HG21	2:L:19:VAL:CG1	2.45	0.47
3:H:151:TYR:CE1	3:H:156:VAL:HG13	2.50	0.47
3:H:194:TRP:CG	3:H:195:PRO:HA	2.49	0.47
1:C:389:VAL:HB	1:C:414:LEU:HD11	1.96	0.46

Continued on next page...

Continued from previous page...

Atom-1	Atom-2	Interatomic distance (Å)	Clash overlap (Å)
1:C:51:TRP:CH2	1:C:127:ILE:HD13	2.49	0.46
1:C:119:TYR:HA	1:C:122:PHE:HD2	1.79	0.46
2:L:151:ILE:HD12	2:L:151:ILE:O	2.15	0.46
3:H:40:SER:HB2	3:H:41:PRO:HD2	1.96	0.46
1:C:569:VAL:C	1:C:572:PRO:HD2	2.36	0.46
1:C:271:PHE:N	1:C:272:PRO:CD	2.78	0.46
2:L:19:VAL:HG21	2:L:76:ILE:HD12	1.97	0.46
1:C:144:PRO:HB2	1:C:215:TYR:CE1	2.51	0.46
1:C:140:THR:OG1	1:C:141:ASN:N	2.48	0.46
5:C:701:Y01:HAQ1	5:C:701:Y01:HAE3	1.64	0.46
2:L:7:SER:HA	2:L:8:PRO:C	2.37	0.46
1:C:278:ILE:HG22	1:C:406:TRP:CZ3	2.35	0.45
1:C:81:PHE:HZ	1:C:348:THR:CG2	2.29	0.45
1:C:154:THR:HG23	1:C:155:PRO:CD	2.45	0.45
1:C:42:GLY:C	1:C:420:ASP:HB2	2.37	0.45
1:C:282:ARG:HG2	1:C:406:TRP:CZ2	2.51	0.45
3:H:22:CYS:HB3	3:H:79:LEU:HB3	1.97	0.45
3:H:17:SER:HB2	3:H:83:MET:O	2.16	0.45
1:C:84:GLU:OE1	1:C:324:GLY:N	2.36	0.45
1:C:104:PRO:HD2	1:C:593:LEU:O	2.16	0.45
1:C:381:VAL:O	1:C:383:THR:HG22	2.17	0.45
3:H:154:GLU:CG	3:H:155:PRO:HA	2.45	0.45
1:C:81:PHE:CZ	1:C:348:THR:HG22	2.52	0.45
1:C:286:LEU:HD11	1:C:400:MET:HE2	1.98	0.45
2:L:199:HIS:HE1	2:L:201:THR:HG23	1.77	0.45
3:H:127:VAL:HG23	3:H:214:LYS:HG3	1.99	0.45
1:C:325:PHE:CD2	9:C:706:1WE:H13	2.52	0.45
2:L:38:GLN:HB2	2:L:87:TYR:CE1	2.52	0.45
3:H:58:ILE:HD12	3:H:70:ILE:HG23	1.99	0.45
3:H:68:PHE:CZ	3:H:83:MET:HG2	2.51	0.45
3:H:143:THR:HG23	3:H:188:THR:CG2	2.47	0.45
1:C:571:ILE:HB	1:C:572:PRO:HD3	1.99	0.44
2:L:119:PHE:HD2	3:H:130:LEU:HD13	1.82	0.44
1:C:485:VAL:CG2	1:C:568:VAL:HG22	2.48	0.44
3:H:137:THR:HG23	3:H:138:THR:HG23	1.99	0.44
1:C:92:ARG:HG2	1:C:92:ARG:NH2	2.33	0.44
2:L:92:PHE:HE2	3:H:105:GLY:CA	2.12	0.44
1:C:300:ASN:OD1	1:C:302:SER:HB3	2.17	0.44
1:C:51:TRP:HA	1:C:388:LEU:HD23	2.00	0.44
1:C:281:ILE:O	1:C:285:THR:HG23	2.17	0.43
1:C:81:PHE:HZ	1:C:348:THR:HG21	1.81	0.43

Continued on next page...

Continued from previous page...

Atom-1	Atom-2	Interatomic distance (Å)	Clash overlap (Å)
1:C:327:VAL:HG22	1:C:428:ALA:HB2	2.00	0.43
3:H:143:THR:HG23	3:H:188:THR:HG22	2.00	0.43
1:C:251:TYR:HE1	1:C:449:ALA:HB2	1.83	0.43
1:C:508:ARG:HG2	1:C:508:ARG:HH11	1.84	0.43
1:C:81:PHE:CE2	1:C:348:THR:HG22	2.54	0.43
3:H:83:MET:CE	3:H:94:TYR:CZ	3.01	0.42
1:C:252:PHE:HA	1:C:255:TRP:NE1	2.33	0.42
2:L:117:SER:O	2:L:135:CYS:HA	2.20	0.42
3:H:11:LEU:HD12	3:H:12:VAL:N	2.33	0.42
1:C:321:LEU:C	1:C:323:PRO:HD3	2.40	0.42
2:L:67:GLY:HA3	2:L:72:TYR:HA	2.01	0.42
1:C:497:ILE:HD13	1:C:497:ILE:N	2.34	0.42
3:H:83:MET:HE1	3:H:94:TYR:CE1	2.55	0.42
2:L:34:LEU:HD22	2:L:72:TYR:CG	2.55	0.42
1:C:434:SER:O	1:C:441:LYS:HB2	2.20	0.42
7:C:704:MPO:O2	7:C:704:MPO:H32	2.18	0.42
3:H:130:LEU:N	3:H:145:GLY:O	2.50	0.42
2:L:152:GLU:CG	2:L:190:HIS:CE1	3.03	0.42
1:C:147:SER:HB2	13:C:803:HOH:O	2.20	0.42
3:H:6:GLU:HG3	3:H:96:CYS:HB3	2.02	0.42
3:H:137:THR:CG2	3:H:138:THR:HG23	2.49	0.42
1:C:393:TYR:HE2	1:C:397:ILE:HD11	1.85	0.41
1:C:527:ALA:O	1:C:530:PHE:HB3	2.19	0.41
2:L:80:GLU:O	2:L:83:ASP:HB2	2.21	0.41
1:C:81:PHE:CE1	1:C:328:LEU:HD11	2.56	0.41
1:C:325:PHE:CD1	1:C:325:PHE:N	2.89	0.41
3:H:210:THR:CG2	3:H:212:VAL:HG23	2.50	0.41
1:C:87:LEU:HD11	1:C:102:LEU:HD11	2.02	0.41
1:C:141:ASN:H	6:C:702:NAG:C1	2.33	0.41
3:H:2:VAL:HG13	3:H:27:PHE:CD2	2.56	0.41
1:C:514:PRO:HA	1:C:515:PRO:HD3	1.94	0.41
1:C:601:GLN:O	1:C:602:LEU:HG	2.20	0.41
2:L:92:PHE:CE1	2:L:97:LEU:HD13	2.56	0.41
2:L:35:HIS:CE1	2:L:51:SER:H	2.39	0.41
1:C:218:ARG:HG2	1:C:224:ASN:ND2	2.36	0.41
1:C:584:GLY:O	1:C:589:ARG:NH2	2.54	0.41
5:C:701:Y01:HAE2	5:C:701:Y01:HBB	1.68	0.41
1:C:582:THR:OG1	1:C:589:ARG:HD2	2.22	0.40
1:C:367:LEU:HD12	1:C:370:MET:HE2	2.03	0.40
1:C:434:SER:HA	1:C:440:ILE:CD1	2.51	0.40
1:C:474:LEU:HD23	1:C:474:LEU:HA	1.89	0.40

Continued on next page...

Continued from previous page...

Atom-1	Atom-2	Interatomic distance (Å)	Clash overlap (Å)
2:L:116:VAL:HG22	2:L:137:LEU:HG	2.04	0.40
1:C:156:ASN:HB3	1:C:208:PHE:CD1	2.57	0.40
1:C:271:PHE:CE2	1:C:275:VAL:HG21	2.56	0.40
2:L:50:TYR:O	2:L:54:ASN:HB2	2.22	0.40
3:H:125:PRO:HB3	3:H:151:TYR:HB3	2.03	0.40
3:H:160:TRP:CZ3	3:H:201:CYS:HB2	2.56	0.40
2:L:11:MET:HE2	2:L:19:VAL:HB	2.01	0.40
2:L:147:VAL:HG22	2:L:148:LYS:N	2.37	0.40
2:L:148:LYS:HD2	2:L:196:GLU:OE2	2.22	0.40

There are no symmetry-related clashes.

5.3 Torsion angles [i](#)

5.3.1 Protein backbone [i](#)

In the following table, the Percentiles column shows the percent Ramachandran outliers of the chain as a percentile score with respect to all X-ray entries followed by that with respect to entries of similar resolution.

The Analysed column shows the number of residues for which the backbone conformation was analysed, and the total number of residues.

Mol	Chain	Analysed	Favoured	Allowed	Outliers	Percentiles	
1	C	535/541 (99%)	523 (98%)	12 (2%)	0	100	100
2	L	211/213 (99%)	203 (96%)	8 (4%)	0	100	100
3	H	217/219 (99%)	210 (97%)	7 (3%)	0	100	100
All	All	963/973 (99%)	936 (97%)	27 (3%)	0	100	100

There are no Ramachandran outliers to report.

5.3.2 Protein sidechains [i](#)

In the following table, the Percentiles column shows the percent sidechain outliers of the chain as a percentile score with respect to all X-ray entries followed by that with respect to entries of similar resolution.

The Analysed column shows the number of residues for which the sidechain conformation was analysed, and the total number of residues.

Mol	Chain	Analysed	Rotameric	Outliers	Percentiles	
1	C	432/446 (97%)	416 (96%)	16 (4%)	34	68
2	L	182/186 (98%)	175 (96%)	7 (4%)	33	67
3	H	181/187 (97%)	179 (99%)	2 (1%)	73	92
All	All	795/819 (97%)	770 (97%)	25 (3%)	40	74

All (25) residues with a non-rotameric sidechain are listed below:

Mol	Chain	Res	Type
1	C	51	TRP
1	C	52	ARG
1	C	138	SER
1	C	221	LEU
1	C	259	SER
1	C	261	SER
1	C	348	THR
1	C	349	SER
1	C	367	LEU
1	C	383	THR
1	C	420	ASP
1	C	482	SER
1	C	529	ILE
1	C	566	SER
1	C	582	THR
1	C	588	GLN
2	L	34	LEU
2	L	38	GLN
2	L	44	SER
2	L	66	SER
2	L	78	SER
2	L	91	GLN
2	L	195	CYS
3	H	96	CYS
3	H	196	SER

Sometimes sidechains can be flipped to improve hydrogen bonding and reduce clashes. All (1) such sidechains are listed below:

Mol	Chain	Res	Type
2	L	54	ASN

5.3.3 RNA [i](#)

There are no RNA molecules in this entry.

5.4 Non-standard residues in protein, DNA, RNA chains [i](#)

There are no non-standard protein/DNA/RNA residues in this entry.

5.5 Carbohydrates [i](#)

2 monosaccharides are modelled in this entry.

In the following table, the Counts columns list the number of bonds (or angles) for which Mogul statistics could be retrieved, the number of bonds (or angles) that are observed in the model and the number of bonds (or angles) that are defined in the Chemical Component Dictionary. The Link column lists molecule types, if any, to which the group is linked. The Z score for a bond length (or angle) is the number of standard deviations the observed value is removed from the expected value. A bond length (or angle) with $|Z| > 2$ is considered an outlier worth inspection. RMSZ is the root-mean-square of all Z scores of the bond lengths (or angles).

Mol	Type	Chain	Res	Link	Bond lengths			Bond angles		
					Counts	RMSZ	# Z > 2	Counts	RMSZ	# Z > 2
4	GLC	A	1	4	12,12,12	0.64	0	17,17,17	0.92	1 (5%)
4	GLC	A	2	4	11,11,12	0.57	0	15,15,17	1.27	2 (13%)

In the following table, the Chirals column lists the number of chiral outliers, the number of chiral centers analysed, the number of these observed in the model and the number defined in the Chemical Component Dictionary. Similar counts are reported in the Torsion and Rings columns. '-' means no outliers of that kind were identified.

Mol	Type	Chain	Res	Link	Chirals	Torsions	Rings
4	GLC	A	1	4	-	1/2/22/22	0/1/1/1
4	GLC	A	2	4	-	2/2/19/22	0/1/1/1

There are no bond length outliers.

All (3) bond angle outliers are listed below:

Mol	Chain	Res	Type	Atoms	Z	Observed(°)	Ideal(°)
4	A	2	GLC	C1-O5-C5	3.59	117.05	112.19
4	A	2	GLC	O5-C5-C6	2.41	110.98	107.20
4	A	1	GLC	O1-C1-C2	2.02	114.72	109.03

There are no chirality outliers.

All (3) torsion outliers are listed below:

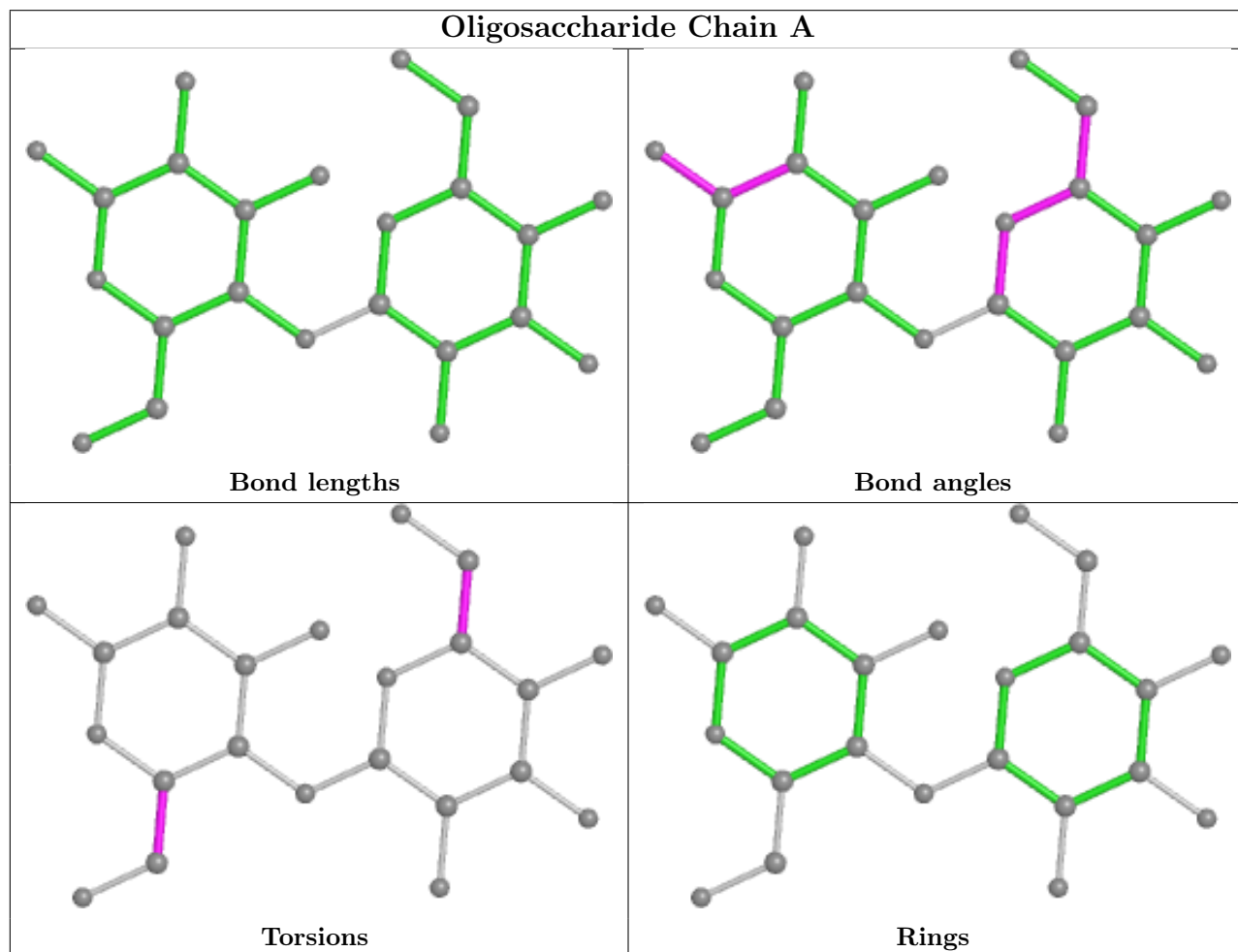
Mol	Chain	Res	Type	Atoms
4	A	2	GLC	C4-C5-C6-O6
4	A	1	GLC	O5-C5-C6-O6
4	A	2	GLC	O5-C5-C6-O6

There are no ring outliers.

1 monomer is involved in 4 short contacts:

Mol	Chain	Res	Type	Clashes	Symm-Clashes
4	A	1	GLC	4	0

The following is a two-dimensional graphical depiction of Mogul quality analysis of bond lengths, bond angles, torsion angles, and ring geometry for oligosaccharide.



5.6 Ligand geometry [i](#)

Of 10 ligands modelled in this entry, 3 are monoatomic - leaving 7 for Mogul analysis.

In the following table, the Counts columns list the number of bonds (or angles) for which Mogul statistics could be retrieved, the number of bonds (or angles) that are observed in the model and the number of bonds (or angles) that are defined in the Chemical Component Dictionary. The Link column lists molecule types, if any, to which the group is linked. The Z score for a bond length (or angle) is the number of standard deviations the observed value is removed from the expected value. A bond length (or angle) with $|Z| > 2$ is considered an outlier worth inspection. RMSZ is the root-mean-square of all Z scores of the bond lengths (or angles).

Mol	Type	Chain	Res	Link	Bond lengths			Bond angles		
					Counts	RMSZ	# Z > 2	Counts	RMSZ	# Z > 2
10	P4G	C	707	-	10,10,10	0.82	0	9,9,9	0.38	0
5	Y01	C	701	-	38,38,38	4.30	13 (34%)	57,57,57	1.98	16 (28%)
7	MPO	C	704	-	13,13,13	2.74	2 (15%)	17,17,17	1.48	3 (17%)
9	1WE	C	706	-	10,10,10	0.44	0	10,12,12	0.54	0
10	P4G	C	708	-	10,10,10	0.88	0	9,9,9	0.46	0
6	NAG	C	702	1	14,14,15	0.91	1 (7%)	17,19,21	0.68	0
8	CLR	C	705	-	31,31,31	0.68	0	48,48,48	1.41	7 (14%)

In the following table, the Chirals column lists the number of chiral outliers, the number of chiral centers analysed, the number of these observed in the model and the number defined in the Chemical Component Dictionary. Similar counts are reported in the Torsion and Rings columns. '-' means no outliers of that kind were identified.

Mol	Type	Chain	Res	Link	Chirals	Torsions	Rings
10	P4G	C	707	-	-	5/8/8/8	-
5	Y01	C	701	-	-	10/19/77/77	0/4/4/4
7	MPO	C	704	-	-	0/7/15/15	0/1/1/1
9	1WE	C	706	-	-	0/4/4/4	0/1/1/1
10	P4G	C	708	-	-	4/8/8/8	-
6	NAG	C	702	1	-	2/6/23/26	0/1/1/1
8	CLR	C	705	-	-	2/10/68/68	0/4/4/4

All (16) bond length outliers are listed below:

Mol	Chain	Res	Type	Atoms	Z	Observed(Å)	Ideal(Å)
5	C	701	Y01	CAI-CAZ	17.04	1.70	1.33
5	C	701	Y01	CBB-CBE	-10.02	1.36	1.54
5	C	701	Y01	CBH-CBF	8.11	1.69	1.56
7	C	704	MPO	O2-S1	7.46	1.67	1.45
5	C	701	Y01	CAU-CBI	-7.09	1.41	1.54
7	C	704	MPO	C1-S1	-6.00	1.69	1.77
5	C	701	Y01	CAP-CBE	5.99	1.66	1.54
5	C	701	Y01	CAU-CAS	5.53	1.65	1.53

Continued on next page...

Continued from previous page...

Mol	Chain	Res	Type	Atoms	Z	Observed(Å)	Ideal(Å)
5	C	701	Y01	CAK-CBD	5.38	1.62	1.53
5	C	701	Y01	CBI-CBE	4.55	1.63	1.55
5	C	701	Y01	CBH-CAZ	-4.34	1.44	1.52
5	C	701	Y01	OAW-CAY	3.63	1.44	1.34
6	C	702	NAG	O5-C1	3.04	1.48	1.43
5	C	701	Y01	CAQ-CBG	2.92	1.60	1.54
5	C	701	Y01	CAO-CBB	2.81	1.61	1.54
5	C	701	Y01	CAE-CBI	-2.09	1.50	1.54

All (26) bond angle outliers are listed below:

Mol	Chain	Res	Type	Atoms	Z	Observed(°)	Ideal(°)
8	C	705	CLR	C4-C5-C10	5.67	123.95	116.42
5	C	701	Y01	CAU-CBI-CBG	5.49	115.78	107.27
5	C	701	Y01	CAU-CBI-CBE	4.36	123.09	116.57
5	C	701	Y01	CBI-CBE-CBB	-4.07	113.12	119.49
5	C	701	Y01	CAK-CAI-CAZ	-3.95	117.77	125.06
5	C	701	Y01	CAE-CBI-CBE	-3.88	104.47	111.71
5	C	701	Y01	CBH-CAZ-CAI	-3.55	117.47	122.90
5	C	701	Y01	CAD-CBH-CBF	-3.50	107.50	111.68
5	C	701	Y01	CAE-CBI-CBG	-3.43	105.32	111.71
5	C	701	Y01	OAW-CAY-CAM	3.24	118.48	111.50
7	C	704	MPO	O2-S1-C1	3.16	110.72	106.92
5	C	701	Y01	CAV-CAZ-CBH	2.89	120.27	116.42
5	C	701	Y01	CAE-CBI-CAU	-2.73	106.28	110.59
8	C	705	CLR	C10-C5-C6	-2.71	118.75	122.90
5	C	701	Y01	CBF-CBD-CBG	2.60	112.57	109.09
8	C	705	CLR	C8-C7-C6	-2.59	109.01	112.73
7	C	704	MPO	C6-C7-N1	2.40	113.75	110.10
8	C	705	CLR	C4-C5-C6	-2.33	117.25	120.61
8	C	705	CLR	C7-C6-C5	-2.31	120.80	125.06
5	C	701	Y01	CAU-CAS-CBF	-2.30	109.13	113.11
8	C	705	CLR	C19-C10-C9	-2.25	109.00	111.68
5	C	701	Y01	CAK-CBD-CBG	-2.20	107.72	110.91
5	C	701	Y01	CAV-CAZ-CAI	-2.19	117.45	120.61
5	C	701	Y01	CAK-CBD-CBF	2.17	112.35	109.71
8	C	705	CLR	C2-C3-C4	-2.04	107.51	110.31
7	C	704	MPO	O3-S1-C1	2.01	109.01	105.77

There are no chirality outliers.

All (23) torsion outliers are listed below:

Mol	Chain	Res	Type	Atoms
10	C	708	P4G	O2-C3-C4-O3
10	C	707	P4G	C5-C6-O4-C7
5	C	701	Y01	CAM-CAY-OAW-CBC
6	C	702	NAG	C4-C5-C6-O6
5	C	701	Y01	CAN-CAJ-CAO-CBB
5	C	701	Y01	OAG-CAY-OAW-CBC
5	C	701	Y01	CAX-CAL-CAM-CAY
5	C	701	Y01	CAV-CBC-OAW-CAY
5	C	701	Y01	CAR-CBC-OAW-CAY
6	C	702	NAG	O5-C5-C6-O6
8	C	705	CLR	C21-C20-C22-C23
10	C	708	P4G	C6-C5-O3-C4
5	C	701	Y01	CAC-CBB-CBE-CBI
8	C	705	CLR	C22-C23-C24-C25
5	C	701	Y01	CAM-CAL-CAX-OAH
10	C	708	P4G	C4-C3-O2-C2
5	C	701	Y01	CAM-CAL-CAX-OAF
10	C	707	P4G	C6-C5-O3-C4
5	C	701	Y01	CAO-CAJ-CAN-CBA
10	C	707	P4G	C1-C2-O2-C3
10	C	707	P4G	C3-C4-O3-C5
10	C	708	P4G	O3-C5-C6-O4
10	C	707	P4G	O3-C5-C6-O4

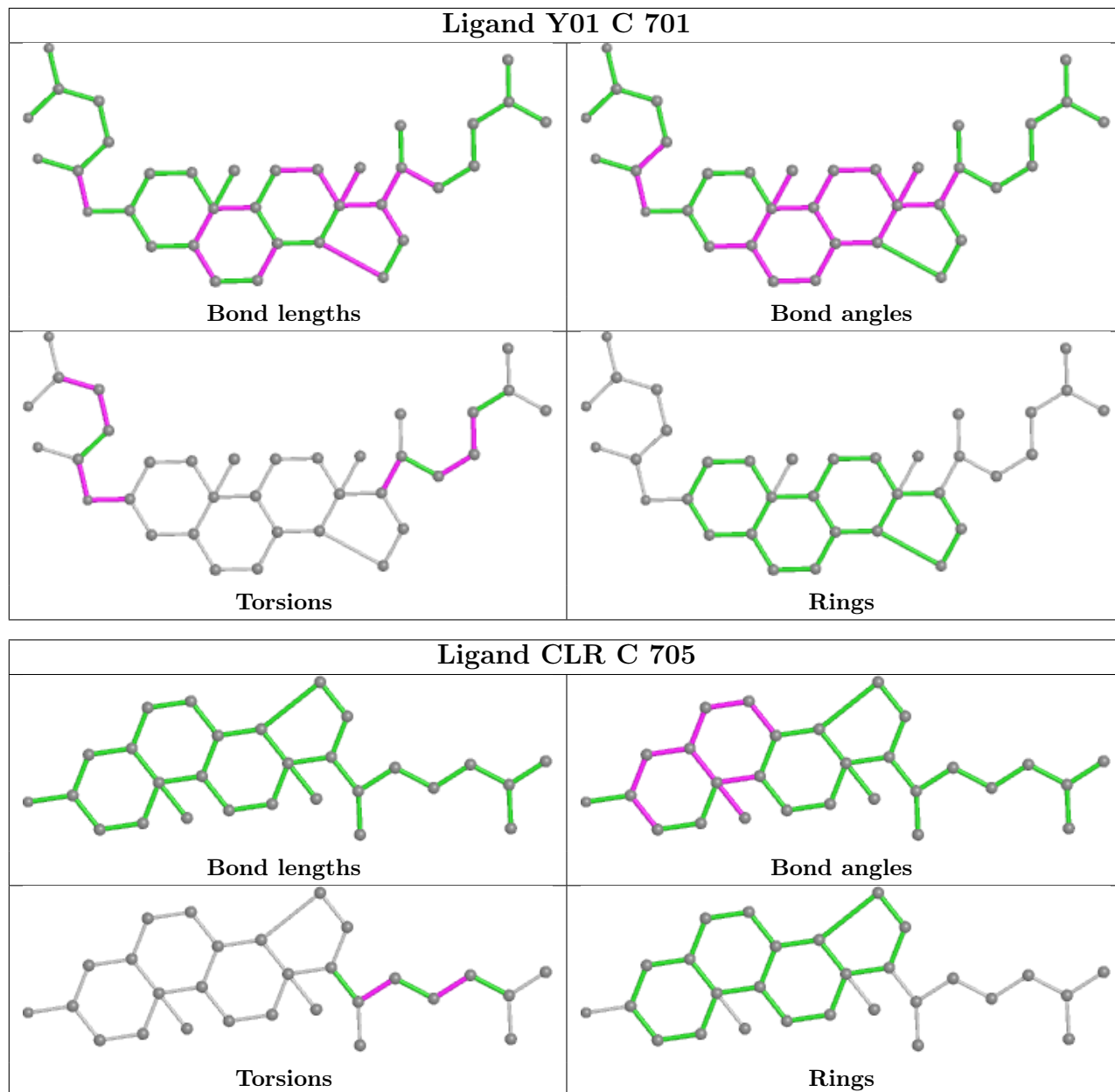
There are no ring outliers.

5 monomers are involved in 7 short contacts:

Mol	Chain	Res	Type	Clashes	Symm-Clashes
10	C	707	P4G	1	0
5	C	701	Y01	2	0
7	C	704	MPO	1	0
9	C	706	1WE	2	0
6	C	702	NAG	1	0

The following is a two-dimensional graphical depiction of Mogul quality analysis of bond lengths, bond angles, torsion angles, and ring geometry for all instances of the Ligand of Interest. In addition, ligands with molecular weight > 250 and outliers as shown on the validation Tables will also be included. For torsion angles, if less than 5% of the Mogul distribution of torsion angles is within 10 degrees of the torsion angle in question, then that torsion angle is considered an outlier. Any bond that is central to one or more torsion angles identified as an outlier by Mogul will be highlighted in the graph. For rings, the root-mean-square deviation (RMSD) between the ring in question and similar rings identified by Mogul is calculated over all ring torsion angles. If the average RMSD is greater than 60 degrees and the minimal RMSD between the ring in question and

any Mogul-identified rings is also greater than 60 degrees, then that ring is considered an outlier. The outliers are highlighted in purple. The color gray indicates Mogul did not find sufficient equivalents in the CSD to analyse the geometry.



5.7 Other polymers [i](#)

There are no such residues in this entry.

5.8 Polymer linkage issues [i](#)

There are no chain breaks in this entry.

6 Fit of model and data

6.1 Protein, DNA and RNA chains

In the following table, the column labelled ‘#RSRZ > 2’ contains the number (and percentage) of RSRZ outliers, followed by percent RSRZ outliers for the chain as percentile scores relative to all X-ray entries and entries of similar resolution. The OWAB column contains the minimum, median, 95th percentile and maximum values of the occupancy-weighted average B-factor per residue. The column labelled ‘Q < 0.9’ lists the number of (and percentage) of residues with an average occupancy less than 0.9.

Mol	Chain	Analysed	<RSRZ>	#RSRZ>2	OWAB(Å ²)	Q<0.9
1	C	537/541 (99%)	0.03	12 (2%) 62 52	65, 82, 109, 145	0
2	L	213/213 (100%)	-0.08	3 (1%) 75 70	63, 80, 109, 129	0
3	H	219/219 (100%)	0.11	10 (4%) 32 22	66, 81, 121, 161	0
All	All	969/973 (99%)	0.03	25 (2%) 56 46	63, 82, 111, 161	0

All (25) RSRZ outliers are listed below:

Mol	Chain	Res	Type	RSRZ
1	C	586	LEU	6.0
3	H	142	VAL	4.4
3	H	134	CYS	4.1
3	H	216	ILE	3.8
3	H	144	LEU	3.5
3	H	133	VAL	3.3
1	C	601	GLN	3.0
1	C	255	TRP	2.9
1	C	290	PHE	2.7
1	C	600	GLN	2.6
3	H	140	SER	2.6
1	C	304	ILE	2.6
2	L	153	GLY	2.6
1	C	602	LEU	2.6
1	C	590	PHE	2.5
3	H	131	ALA	2.4
1	C	588	GLN	2.4
2	L	152	GLU	2.4
3	H	135	GLY	2.4
1	C	589	ARG	2.1
2	L	119	PHE	2.1
3	H	162	SER	2.1
1	C	25	ASP	2.0

Continued on next page...

Continued from previous page...

Mol	Chain	Res	Type	RSRZ
1	C	540	ILE	2.0
3	H	194	TRP	2.0

6.2 Non-standard residues in protein, DNA, RNA chains [i](#)

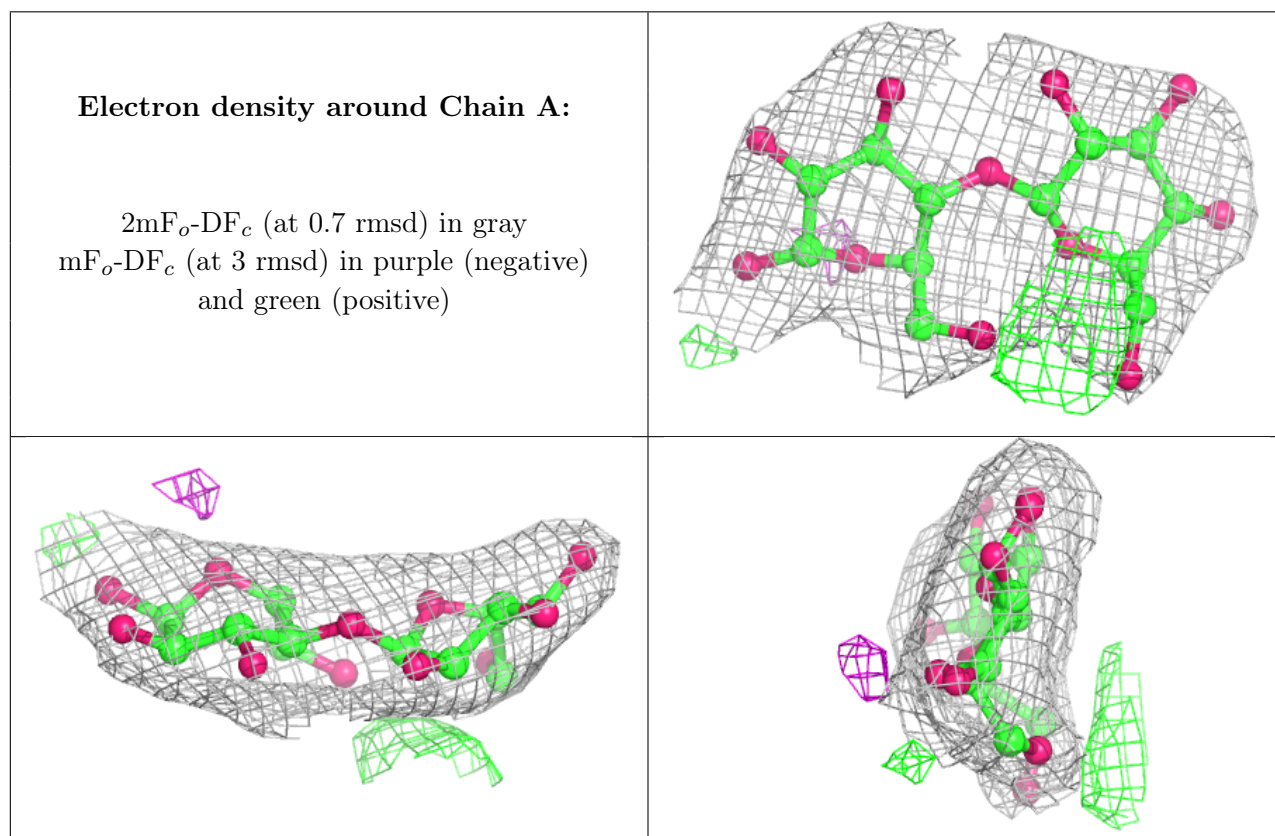
There are no non-standard protein/DNA/RNA residues in this entry.

6.3 Carbohydrates [i](#)

In the following table, the Atoms column lists the number of modelled atoms in the group and the number defined in the chemical component dictionary. The B-factors column lists the minimum, median, 95th percentile and maximum values of B factors of atoms in the group. The column labelled 'Q<0.9' lists the number of atoms with occupancy less than 0.9.

Mol	Type	Chain	Res	Atoms	RSCC	RSR	B-factors(Å ²)	Q<0.9
4	GLC	A	1	12/12	0.91	0.14	89,96,102,104	0
4	GLC	A	2	11/12	0.95	0.20	91,99,103,104	0

The following is a graphical depiction of the model fit to experimental electron density for oligosaccharide. Each fit is shown from different orientation to approximate a three-dimensional view.

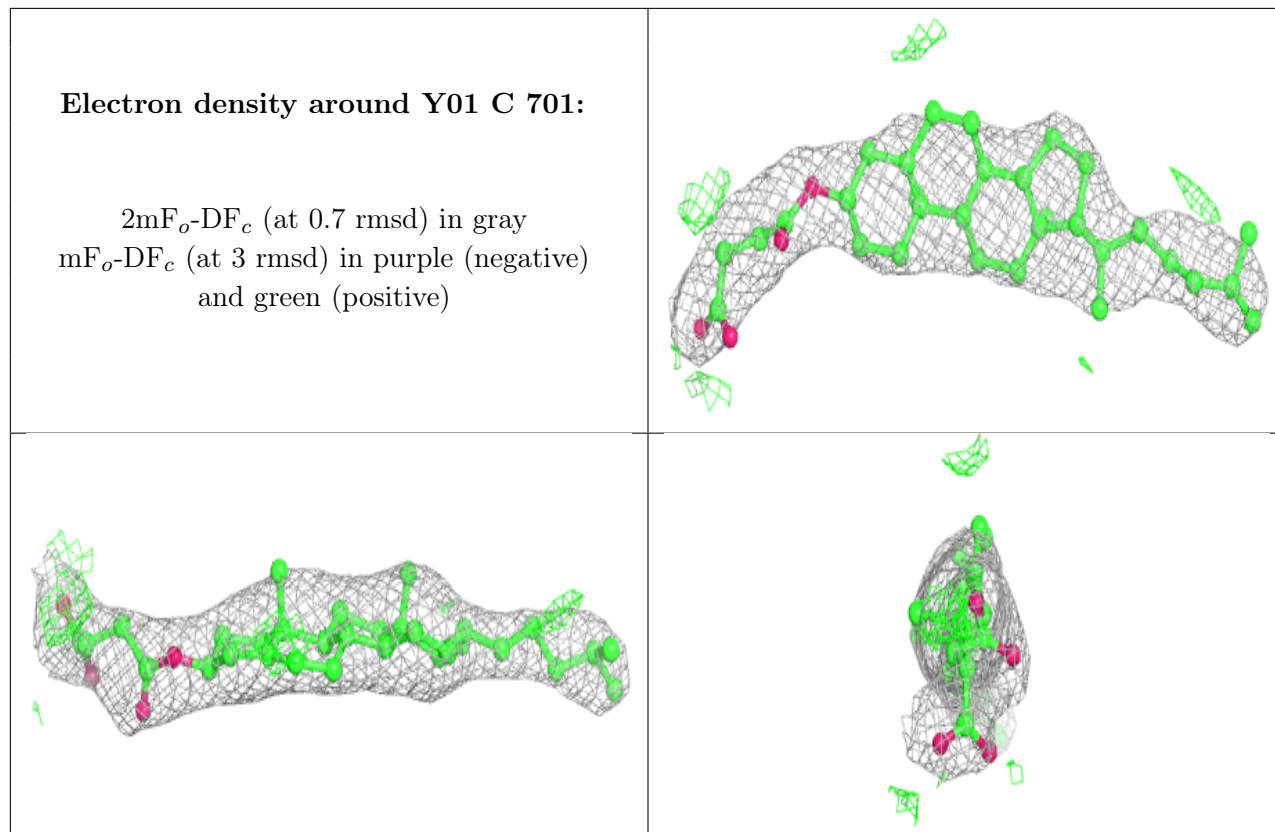


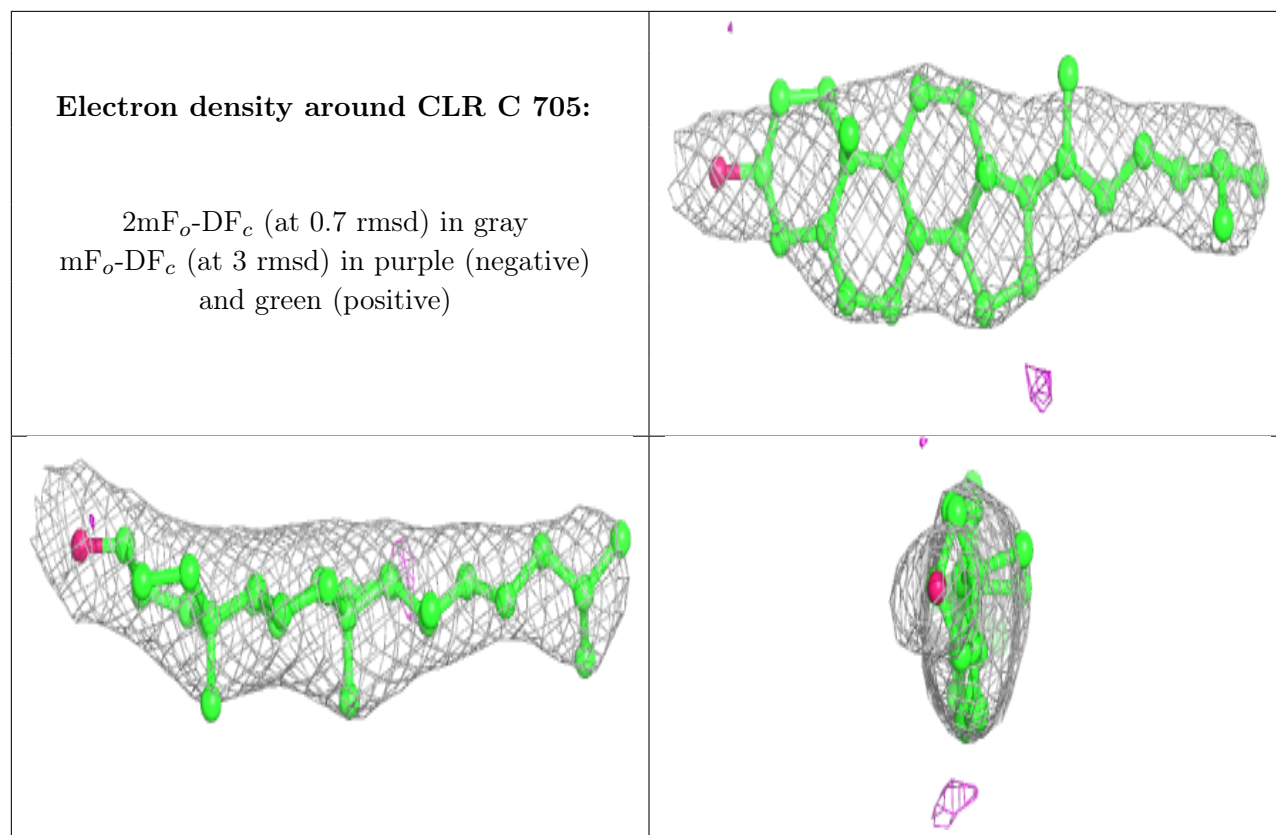
6.4 Ligands [i](#)

In the following table, the Atoms column lists the number of modelled atoms in the group and the number defined in the chemical component dictionary. The B-factors column lists the minimum, median, 95th percentile and maximum values of B factors of atoms in the group. The column labelled 'Q< 0.9' lists the number of atoms with occupancy less than 0.9.

Mol	Type	Chain	Res	Atoms	RSCC	RSR	B-factors(Å ²)	Q<0.9
10	P4G	C	708	11/11	0.59	0.25	109,133,139,140	0
6	NAG	C	702	14/15	0.79	0.34	114,118,122,122	0
7	MPO	C	704	13/13	0.83	0.19	94,108,136,150	0
10	P4G	C	707	11/11	0.89	0.15	111,133,145,149	0
5	Y01	C	701	35/35	0.93	0.20	75,95,111,117	0
8	CLR	C	705	28/28	0.94	0.27	75,89,94,98	0
11	NA	C	709	1/1	0.94	0.28	72,72,72,72	0
11	NA	C	710	1/1	0.94	0.29	70,70,70,70	0
12	CL	C	711	1/1	0.94	0.18	77,77,77,77	0
9	1WE	C	706	10/10	0.97	0.22	75,79,84,84	0

The following is a graphical depiction of the model fit to experimental electron density of all instances of the Ligand of Interest. In addition, ligands with molecular weight > 250 and outliers as shown on the geometry validation Tables will also be included. Each fit is shown from different orientation to approximate a three-dimensional view.





6.5 Other polymers [i](#)

There are no such residues in this entry.