



Full wwPDB X-ray Structure Validation Report ⓘ

Mar 14, 2018 – 10:17 am GMT

PDB ID : 2XUQ
Title : CRYSTAL STRUCTURE OF the MACHE-Y337A mutant in complex with soaked TZ2PA6 ANTI-SYN inhibitors
Authors : Bourne, Y.; Radic, Z.; Taylor, P.; Marchot, P.
Deposited on : 2010-10-20
Resolution : 2.70 Å(reported)

This is a Full wwPDB X-ray Structure Validation Report for a publicly released PDB entry.

We welcome your comments at validation@mail.wwpdb.org

A user guide is available at

<https://www.wwpdb.org/validation/2017/XrayValidationReportHelp>

with specific help available everywhere you see the ⓘ symbol.

The following versions of software and data (see [references ⓘ](#)) were used in the production of this report:

MolProbity : 4.02b-467
Mogul : 1.7.3 (157068), CSD as539be (2018)
Xtrriage (Phenix) : 1.13
EDS : trunk31020
Percentile statistics : 20171227.v01 (using entries in the PDB archive December 27th 2017)
Refmac : 5.8.0158
CCP4 : 7.0 (Gargrove)
Ideal geometry (proteins) : Engh & Huber (2001)
Ideal geometry (DNA, RNA) : Parkinson et al. (1996)
Validation Pipeline (wwPDB-VP) : trunk31020

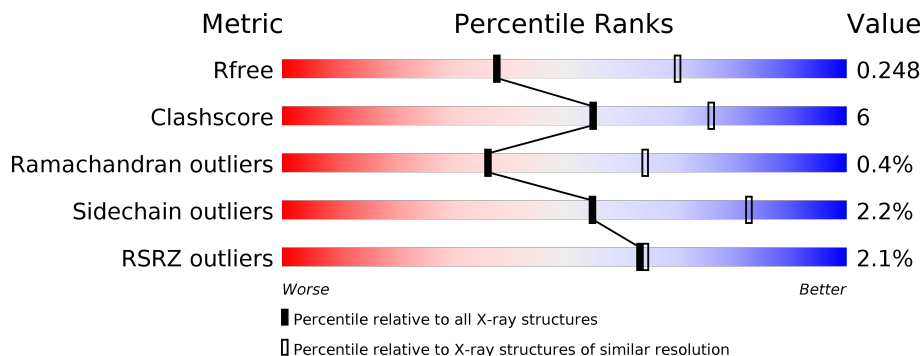
1 Overall quality at a glance

The following experimental techniques were used to determine the structure:

X-RAY DIFFRACTION

The reported resolution of this entry is 2.70 Å.

Percentile scores (ranging between 0-100) for global validation metrics of the entry are shown in the following graphic. The table shows the number of entries on which the scores are based.



Metric	Whole archive (#Entries)	Similar resolution (#Entries, resolution range(Å))
R_{free}	111664	2449 (2.70-2.70)
Clashscore	122126	2756 (2.70-2.70)
Ramachandran outliers	120053	2716 (2.70-2.70)
Sidechain outliers	120020	2716 (2.70-2.70)
RSRZ outliers	108989	2376 (2.70-2.70)

The table below summarises the geometric issues observed across the polymeric chains and their fit to the electron density. The red, orange, yellow and green segments on the lower bar indicate the fraction of residues that contain outliers for ≥ 3 , 2, 1 and 0 types of geometric quality criteria. A grey segment represents the fraction of residues that are not modelled. The numeric value for each fraction is indicated below the corresponding segment, with a dot representing fractions $\leq 5\%$. The upper red bar (where present) indicates the fraction of residues that have poor fit to the electron density. The numeric value is given above the bar.

Mol	Chain	Length	Quality of chain
1	A	543	<p>2% 86% 12% ..</p>
1	B	543	<p>2% 85% 12% ..</p>

2 Entry composition [i](#)

There are 4 unique types of molecules in this entry. The entry contains 8531 atoms, of which 0 are hydrogens and 0 are deuteriums.

In the tables below, the ZeroOcc column contains the number of atoms modelled with zero occupancy, the AltConf column contains the number of residues with at least one atom in alternate conformation and the Trace column contains the number of residues modelled with at most 2 atoms.

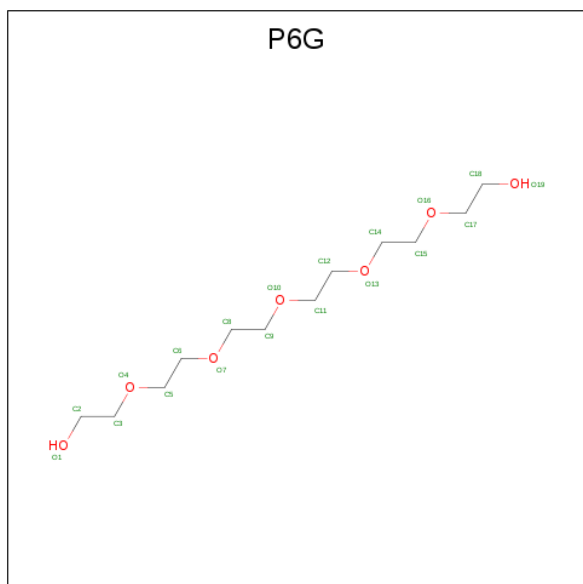
- Molecule 1 is a protein called ACETYLCHOLINESTERASE.

Mol	Chain	Residues	Atoms					ZeroOcc	AltConf	Trace
			Total	C	N	O	S			
1	A	536	4198	2695	730	759	14	0	2	0
1	B	532	4156	2668	718	756	14	0	2	0

There are 2 discrepancies between the modelled and reference sequences:

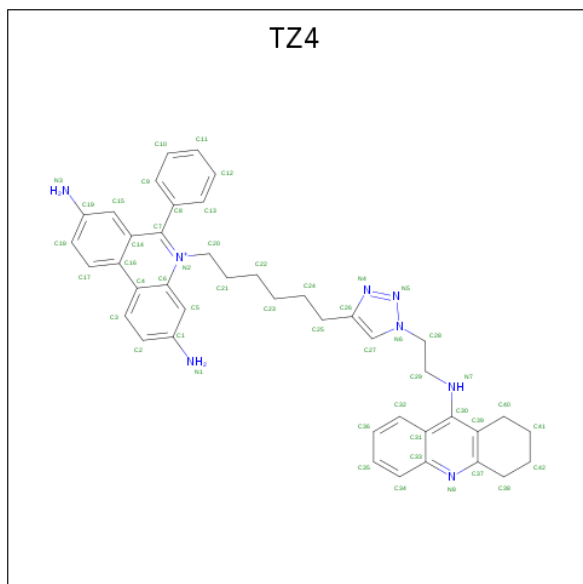
Chain	Residue	Modelled	Actual	Comment	Reference
A	337	ALA	TYR	engineered mutation	UNP P21836
B	337	ALA	TYR	engineered mutation	UNP P21836

- Molecule 2 is HEXAETHYLENE GLYCOL (three-letter code: P6G) (formula: C₁₂H₂₆O₇).



Mol	Chain	Residues	Atoms			ZeroOcc	AltConf
			Total	C	O		
2	A	1	19	12	7	0	0

- Molecule 3 is 3,8-DIAMINO-6-PHENYL-5-[6-[1-[2-[(1,2,3,4-TETRAHYDRO-9-ACRIDINYL)AMINO]ETHYL]-1H-1,2,3-TRIAZOL-4-YL]HEXYL]-PHENANTHRIDINIUM (three-letter code: TZ4) (formula: C₄₂H₄₅N₈).



Mol	Chain	Residues	Atoms			ZeroOcc	AltConf
3	A	1	Total	C	N	0	0
			50	42	8		
3	B	1	Total	C	N	0	0
			50	42	8		

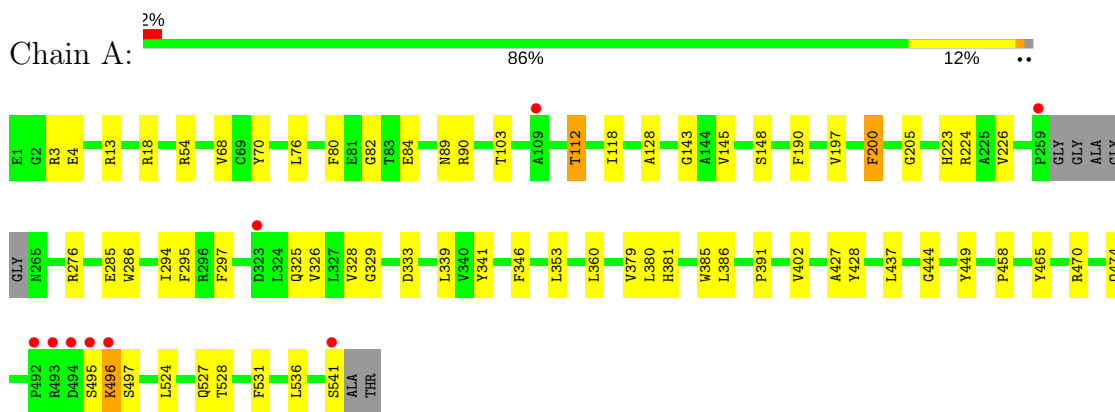
- Molecule 4 is water.

Mol	Chain	Residues	Atoms		ZeroOcc	AltConf
4	A	34	Total	O	0	0
			34	34		
4	B	24	Total	O	0	0
			24	24		

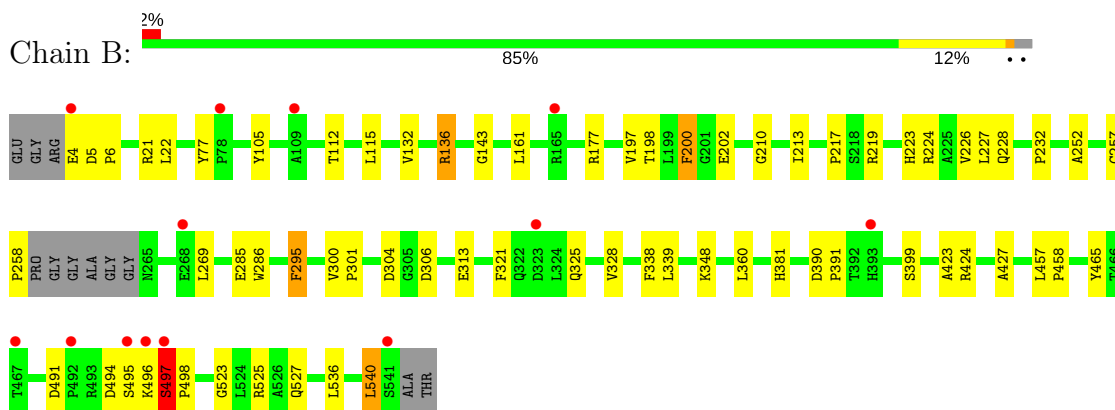
3 Residue-property plots i

These plots are drawn for all protein, RNA and DNA chains in the entry. The first graphic for a chain summarises the proportions of the various outlier classes displayed in the second graphic. The second graphic shows the sequence view annotated by issues in geometry and electron density. Residues are color-coded according to the number of geometric quality criteria for which they contain at least one outlier: green = 0, yellow = 1, orange = 2 and red = 3 or more. A red dot above a residue indicates a poor fit to the electron density ($RSRZ > 2$). Stretches of 2 or more consecutive residues without any outlier are shown as a green connector. Residues present in the sample, but not in the model, are shown in grey.

• Molecule 1: ACETYLCHOLINESTERASE



• Molecule 1: ACETYLCHOLINESTERASE



4 Data and refinement statistics

Property	Value	Source
Space group	P 21 21 21	Depositor
Cell constants a, b, c, α , β , γ	78.60Å 109.70Å 227.94Å 90.00° 90.00° 90.00°	Depositor
Resolution (Å)	20.00 – 2.70 19.95 – 2.70	Depositor EDS
% Data completeness (in resolution range)	99.6 (20.00-2.70) 99.6 (19.95-2.70)	Depositor EDS
R_{merge}	0.08	Depositor
R_{sym}	(Not available)	Depositor
$\langle I/\sigma(I) \rangle$ ¹	3.58 (at 2.71Å)	Xtrriage
Refinement program	REFMAC 5.5.0109	Depositor
R, R_{free}	0.201 , 0.245 0.203 , 0.248	Depositor DCC
R_{free} test set	1118 reflections (2.05%)	wwPDB-VP
Wilson B-factor (Å ²)	61.9	Xtrriage
Anisotropy	0.054	Xtrriage
Bulk solvent k_{sol} (e/Å ³), B_{sol} (Å ²)	0.31 , 40.6	EDS
L-test for twinning ²	$\langle L \rangle = 0.50$, $\langle L^2 \rangle = 0.34$	Xtrriage
Estimated twinning fraction	No twinning to report.	Xtrriage
F_o, F_c correlation	0.95	EDS
Total number of atoms	8531	wwPDB-VP
Average B, all atoms (Å ²)	58.0	wwPDB-VP

Xtrriage's analysis on translational NCS is as follows: *The largest off-origin peak in the Patterson function is 2.85% of the height of the origin peak. No significant pseudotranslation is detected.*

¹Intensities estimated from amplitudes.

²Theoretical values of $\langle |L| \rangle$, $\langle L^2 \rangle$ for acentric reflections are 0.5, 0.333 respectively for untwinned datasets, and 0.375, 0.2 for perfectly twinned datasets.

5 Model quality [i](#)

5.1 Standard geometry [i](#)

Bond lengths and bond angles in the following residue types are not validated in this section: TZ4, P6G

The Z score for a bond length (or angle) is the number of standard deviations the observed value is removed from the expected value. A bond length (or angle) with $|Z| > 5$ is considered an outlier worth inspection. RMSZ is the root-mean-square of all Z scores of the bond lengths (or angles).

Mol	Chain	Bond lengths		Bond angles	
		RMSZ	# Z >5	RMSZ	# Z >5
1	A	0.55	0/4330	0.65	0/5918
1	B	0.52	0/4287	0.63	1/5860 (0.0%)
All	All	0.54	0/8617	0.64	1/11778 (0.0%)

There are no bond length outliers.

All (1) bond angle outliers are listed below:

Mol	Chain	Res	Type	Atoms	Z	Observed(°)	Ideal(°)
1	B	360	LEU	CA-CB-CG	5.70	128.41	115.30

There are no chirality outliers.

There are no planarity outliers.

5.2 Too-close contacts [i](#)

In the following table, the Non-H and H(model) columns list the number of non-hydrogen atoms and hydrogen atoms in the chain respectively. The H(added) column lists the number of hydrogen atoms added and optimized by MolProbity. The Clashes column lists the number of clashes within the asymmetric unit, whereas Symm-Clashes lists symmetry related clashes.

Mol	Chain	Non-H	H(model)	H(added)	Clashes	Symm-Clashes
1	A	4198	0	4093	45	0
1	B	4156	0	4044	44	0
2	A	19	0	26	5	0
3	A	50	0	45	11	0
3	B	50	0	45	5	0
4	A	34	0	0	0	0
4	B	24	0	0	2	0
All	All	8531	0	8253	93	0

The all-atom clashscore is defined as the number of clashes found per 1000 atoms (including hydrogen atoms). The all-atom clashscore for this structure is 6.

All (93) close contacts within the same asymmetric unit are listed below, sorted by their clash magnitude.

Atom-1	Atom-2	Interatomic distance (Å)	Clash overlap (Å)
3:A:1543:TZ4:H402	3:A:1543:TZ4:H292	1.46	0.93
1:B:197:VAL:H	1:B:223:HIS:HD2	1.19	0.88
1:A:496:LYS:HA	1:A:497:SER:C	1.96	0.85
1:B:497:SER:HB2	1:B:498:PRO:C	1.98	0.83
1:A:4:GLU:OE1	1:A:18:ARG:HD3	1.80	0.80
1:A:496:LYS:HA	1:A:497:SER:O	1.88	0.74
1:B:497:SER:HB2	1:B:498:PRO:O	1.88	0.73
1:B:197:VAL:H	1:B:223:HIS:CD2	2.07	0.71
1:B:285:GLU:HG3	3:B:1542:TZ4:H2	1.72	0.70
3:B:1542:TZ4:H402	3:B:1542:TZ4:H292	1.73	0.70
1:B:161:LEU:HD11	1:B:269:LEU:HD22	1.75	0.68
3:A:1543:TZ4:C40	3:A:1543:TZ4:H292	2.22	0.66
1:A:197:VAL:H	1:A:223:HIS:HD2	1.43	0.65
1:A:76:LEU:HD13	3:A:1543:TZ4:H10	1.82	0.62
1:A:286[B]:TRP:CE3	1:A:286[B]:TRP:HA	2.35	0.62
1:A:380:LEU:HB3	2:A:1542:P6G:H52	1.80	0.62
1:A:385:TRP:HD1	1:B:527:GLN:OE1	1.83	0.61
1:A:458:PRO:HA	1:A:465:TYR:CD2	2.36	0.60
1:A:437:LEU:HD11	1:A:449:TYR:CD2	2.36	0.59
3:A:1543:TZ4:C29	3:A:1543:TZ4:H402	2.28	0.59
1:B:286:TRP:HB2	3:B:1542:TZ4:C3	2.33	0.59
1:A:381:HIS:HA	2:A:1542:P6G:H31	1.85	0.58
1:B:4:GLU:HB3	4:B:2001:HOH:O	2.03	0.58
1:B:112:THR:HG21	1:B:143:GLY:O	2.04	0.57
1:A:294:ILE:HD11	1:A:402:VAL:HG21	1.88	0.56
1:A:4:GLU:OE1	1:A:18:ARG:NH1	2.39	0.56
1:A:341:TYR:OH	3:A:1543:TZ4:H412	2.06	0.56
1:A:112:THR:HG21	1:A:143:GLY:O	2.05	0.55
1:A:326:VAL:HG12	1:A:328:VAL:HG13	1.88	0.55
1:A:286[A]:TRP:HB2	3:A:1543:TZ4:C3	2.37	0.54
1:A:527:GLN:HE21	2:A:1542:P6G:H171	1.74	0.53
1:A:380:LEU:CB	2:A:1542:P6G:H52	2.39	0.52
1:A:89:ASN:O	1:A:90:ARG:NH1	2.42	0.51
1:B:77:TYR:CZ	1:B:348:LYS:HG2	2.45	0.51
1:B:424:ARG:NH2	1:B:424:ARG:HG3	2.24	0.51
1:A:286[B]:TRP:CH2	1:A:297:PHE:HA	2.46	0.51
1:B:22:LEU:HD13	1:B:136:ARG:HH21	1.75	0.51

Continued on next page...

Continued from previous page...

Atom-1	Atom-2	Interatomic distance (Å)	Clash overlap (Å)
1:B:495:SER:O	1:B:497:SER:N	2.44	0.50
1:A:286[B]:TRP:HB2	3:A:1543:TZ4:C3	2.42	0.50
1:A:224:ARG:HG2	1:A:325:GLN:HB2	1.92	0.50
1:B:424:ARG:HG3	1:B:424:ARG:HH21	1.76	0.49
1:B:224:ARG:HG2	1:B:325:GLN:HB2	1.95	0.48
1:A:285:GLU:HG3	3:A:1543:TZ4:H2	1.96	0.47
1:A:103:THR:HG22	1:A:145:VAL:HG13	1.97	0.47
1:B:21:ARG:HD3	1:B:105:TYR:CE1	2.50	0.47
1:A:360:LEU:HD22	1:A:379:VAL:HG21	1.96	0.47
1:B:458:PRO:HA	1:B:465:TYR:CD2	2.49	0.47
1:B:210:GLY:HA3	1:B:232:PRO:HD3	1.97	0.47
2:A:1542:P6G:H182	1:B:381:HIS:CE1	2.49	0.47
1:B:300:VAL:HB	1:B:301:PRO:HD2	1.97	0.47
1:A:333:ASP:OD1	1:A:444:GLY:HA3	2.16	0.46
1:B:339:LEU:HD11	1:B:399:SER:HA	1.97	0.46
1:A:103:THR:HG21	1:A:190:PHE:HB3	1.97	0.46
1:B:213:ILE:O	1:B:219:ARG:HD3	2.15	0.46
3:B:1542:TZ4:H402	3:B:1542:TZ4:C29	2.43	0.46
1:A:80:PHE:CE2	1:A:82:GLY:HA3	2.52	0.45
1:B:200:PHE:HB2	1:B:226:VAL:HB	1.99	0.45
1:B:525:ARG:NH1	4:B:2024:HOH:O	2.49	0.45
1:B:115:LEU:HD23	1:B:198:THR:HB	1.99	0.44
1:B:227:LEU:HB2	1:B:328:VAL:HG12	2.00	0.44
1:B:295:PHE:CE2	1:B:338:PHE:CE1	3.05	0.44
1:B:202:GLU:HA	1:B:228:GLN:O	2.17	0.44
1:A:328:VAL:O	1:A:427:ALA:HA	2.17	0.43
1:B:491:ASP:HB3	1:B:494:ASP:HB3	2.00	0.43
1:B:304:ASP:OD2	1:B:306:ASP:HB3	2.19	0.43
1:A:329:GLY:HA3	1:A:428:TYR:CE2	2.53	0.43
1:B:321:PHE:HB3	1:B:423:ALA:HB2	2.01	0.43
1:B:197:VAL:N	1:B:223:HIS:HD2	2.00	0.43
1:B:497:SER:CB	1:B:498:PRO:C	2.80	0.43
1:A:386:LEU:HD21	1:B:523:GLY:HA3	2.00	0.43
3:B:1542:TZ4:C21	3:B:1542:TZ4:H5	2.48	0.43
1:A:528:THR:O	1:A:531:PHE:HB3	2.19	0.43
1:B:540:LEU:O	1:B:540:LEU:HD12	2.19	0.42
1:B:328:VAL:O	1:B:427:ALA:HA	2.20	0.42
1:A:285:GLU:CG	3:A:1543:TZ4:H2	2.50	0.42
1:A:286[B]:TRP:CZ2	3:A:1543:TZ4:H211	2.54	0.42
1:B:177:ARG:CZ	1:B:217:PRO:HB2	2.50	0.42
1:A:197:VAL:H	1:A:223:HIS:CD2	2.31	0.42

Continued on next page...

Continued from previous page...

Atom-1	Atom-2	Interatomic distance (Å)	Clash overlap (Å)
1:A:276:ARG:HD3	1:A:276:ARG:HA	1.81	0.42
1:B:390:ASP:HA	1:B:391:PRO:HD3	1.94	0.42
1:B:257:CYS:HA	1:B:258:PRO:HD3	1.89	0.41
1:B:5:ASP:HA	1:B:6:PRO:HD2	1.95	0.41
1:A:286[B]:TRP:CE3	3:A:1543:TZ4:C1	3.04	0.41
1:A:200:PHE:CB	1:A:226:VAL:HB	2.50	0.41
1:B:424:ARG:CG	1:B:424:ARG:HH21	2.32	0.41
1:B:252:ALA:HB2	1:B:269:LEU:HD21	2.01	0.41
1:B:457:LEU:N	1:B:458:PRO:CD	2.84	0.41
1:A:128:ALA:HB1	1:A:148:SER:OG	2.20	0.41
1:A:68:VAL:HG23	1:A:90:ARG:HB2	2.03	0.41
1:A:470:ARG:O	1:A:474:GLN:HG3	2.21	0.41
1:A:118:ILE:O	1:A:205:GLY:HA3	2.20	0.40
1:A:353:LEU:HB3	1:A:391:PRO:HB3	2.03	0.40
1:A:339:LEU:HD13	1:A:346:PHE:CE2	2.56	0.40

There are no symmetry-related clashes.

5.3 Torsion angles [i](#)

5.3.1 Protein backbone [i](#)

In the following table, the Percentiles column shows the percent Ramachandran outliers of the chain as a percentile score with respect to all X-ray entries followed by that with respect to entries of similar resolution.

The Analysed column shows the number of residues for which the backbone conformation was analysed, and the total number of residues.

Mol	Chain	Analysed	Favoured	Allowed	Outliers	Percentiles
1	A	534/543 (98%)	506 (95%)	27 (5%)	1 (0%)	49 77
1	B	530/543 (98%)	503 (95%)	24 (4%)	3 (1%)	27 54
All	All	1064/1086 (98%)	1009 (95%)	51 (5%)	4 (0%)	36 64

All (4) Ramachandran outliers are listed below:

Mol	Chain	Res	Type
1	B	136	ARG
1	B	496	LYS
1	B	497	SER

Continued on next page...

Continued from previous page...

Mol	Chain	Res	Type
1	A	496	LYS

5.3.2 Protein sidechains [i](#)

In the following table, the Percentiles column shows the percent sidechain outliers of the chain as a percentile score with respect to all X-ray entries followed by that with respect to entries of similar resolution.

The Analysed column shows the number of residues for which the sidechain conformation was analysed, and the total number of residues.

Mol	Chain	Analysed	Rotameric	Outliers	Percentiles	
1	A	442/442 (100%)	430 (97%)	12 (3%)	48	78
1	B	439/442 (99%)	432 (98%)	7 (2%)	65	87
All	All	881/884 (100%)	862 (98%)	19 (2%)	55	83

All (19) residues with a non-rotameric sidechain are listed below:

Mol	Chain	Res	Type
1	A	3	ARG
1	A	13	ARG
1	A	54	ARG
1	A	70	TYR
1	A	84	GLU
1	A	112	THR
1	A	200	PHE
1	A	295	PHE
1	A	495	SER
1	A	524	LEU
1	A	536	LEU
1	A	541	SER
1	B	132	VAL
1	B	200	PHE
1	B	295	PHE
1	B	313	GLU
1	B	497	SER
1	B	536	LEU
1	B	540	LEU

Some sidechains can be flipped to improve hydrogen bonding and reduce clashes. All (5) such sidechains are listed below:

Mol	Chain	Res	Type
1	A	223	HIS
1	A	509	GLN
1	A	527	GLN
1	B	223	HIS
1	B	265	ASN

5.3.3 RNA [i](#)

There are no RNA molecules in this entry.

5.4 Non-standard residues in protein, DNA, RNA chains [i](#)

There are no non-standard protein/DNA/RNA residues in this entry.

5.5 Carbohydrates [i](#)

There are no carbohydrates in this entry.

5.6 Ligand geometry [i](#)

3 ligands are modelled in this entry.

In the following table, the Counts columns list the number of bonds (or angles) for which Mogul statistics could be retrieved, the number of bonds (or angles) that are observed in the model and the number of bonds (or angles) that are defined in the Chemical Component Dictionary. The Link column lists molecule types, if any, to which the group is linked. The Z score for a bond length (or angle) is the number of standard deviations the observed value is removed from the expected value. A bond length (or angle) with $|Z| > 2$ is considered an outlier worth inspection. RMSZ is the root-mean-square of all Z scores of the bond lengths (or angles).

Mol	Type	Chain	Res	Link	Bond lengths			Bond angles		
					Counts	RMSZ	# $ Z > 2$	Counts	RMSZ	# $ Z > 2$
2	P6G	A	1542	-	18,18,18	2.19	6 (33%)	17,17,17	1.39	2 (11%)
3	TZ4	A	1543	-	56,57,57	1.66	14 (25%)	66,80,80	2.01	13 (19%)
3	TZ4	B	1542	-	56,57,57	1.73	14 (25%)	66,80,80	1.87	14 (21%)

In the following table, the Chirals column lists the number of chiral outliers, the number of chiral centers analysed, the number of these observed in the model and the number defined in the Chemical Component Dictionary. Similar counts are reported in the Torsion and Rings columns. '-' means no outliers of that kind were identified.

Mol	Type	Chain	Res	Link	Chirals	Torsions	Rings
2	P6G	A	1542	-	-	0/16/16/16	0/0/0/0
3	TZ4	A	1543	-	-	0/19/26/26	0/8/8/8
3	TZ4	B	1542	-	-	0/19/26/26	0/8/8/8

All (34) bond length outliers are listed below:

Mol	Chain	Res	Type	Atoms	Z	Observed(Å)	Ideal(Å)
3	B	1542	TZ4	C38-C37	-4.69	1.44	1.50
3	A	1543	TZ4	C38-C37	-4.60	1.44	1.50
3	A	1543	TZ4	C41-C40	-3.93	1.37	1.51
3	B	1542	TZ4	C41-C40	-3.87	1.37	1.51
3	B	1542	TZ4	C42-C38	-3.61	1.38	1.51
3	B	1542	TZ4	C40-C39	-3.61	1.45	1.51
3	A	1543	TZ4	C40-C39	-3.50	1.45	1.51
3	A	1543	TZ4	C42-C38	-3.44	1.38	1.51
3	B	1542	TZ4	C36-C35	2.00	1.42	1.38
3	A	1543	TZ4	C34-C33	2.01	1.45	1.41
3	B	1542	TZ4	C28-N6	2.02	1.51	1.47
3	A	1543	TZ4	C37-N8	2.03	1.34	1.32
3	A	1543	TZ4	C4-C6	2.05	1.45	1.41
3	A	1543	TZ4	C39-C37	2.05	1.43	1.40
3	B	1542	TZ4	C30-C39	2.07	1.42	1.39
3	B	1542	TZ4	C14-C16	2.07	1.45	1.42
3	B	1542	TZ4	C17-C16	2.12	1.45	1.41
3	A	1543	TZ4	C17-C16	2.17	1.45	1.41
3	A	1543	TZ4	C8-C7	2.21	1.51	1.49
3	B	1542	TZ4	C27-C26	2.22	1.39	1.36
3	A	1543	TZ4	C27-C26	2.24	1.39	1.36
3	A	1543	TZ4	C6-N2	2.24	1.43	1.40
3	B	1542	TZ4	C37-N8	2.31	1.35	1.32
3	B	1542	TZ4	C39-C37	2.47	1.44	1.40
3	A	1543	TZ4	C36-C35	2.48	1.44	1.38
3	A	1543	TZ4	C28-N6	2.54	1.52	1.47
3	B	1542	TZ4	C6-N2	2.59	1.43	1.40
2	A	1542	P6G	O13-C14	2.71	1.54	1.42
2	A	1542	P6G	O4-C5	3.34	1.57	1.42
3	B	1542	TZ4	C8-C7	3.43	1.52	1.49
2	A	1542	P6G	O1-C2	3.44	1.60	1.42
2	A	1542	P6G	O7-C8	3.65	1.58	1.42
2	A	1542	P6G	O16-C17	3.66	1.58	1.42
2	A	1542	P6G	O10-C11	4.39	1.61	1.42

All (29) bond angle outliers are listed below:

Mol	Chain	Res	Type	Atoms	Z	Observed(°)	Ideal(°)
3	A	1543	TZ4	C28-N6-C27	-4.76	118.63	129.82
3	A	1543	TZ4	C25-C26-C27	-4.72	122.07	129.65
3	B	1542	TZ4	C28-N6-C27	-3.54	121.49	129.82
3	B	1542	TZ4	C40-C39-C37	-3.15	118.27	121.11
3	B	1542	TZ4	C5-C6-C4	-2.93	116.42	120.65
3	A	1543	TZ4	C40-C39-C37	-2.66	118.71	121.11
3	A	1543	TZ4	C5-C6-C4	-2.49	117.07	120.65
3	B	1542	TZ4	C25-C26-C27	-2.42	125.76	129.65
3	A	1543	TZ4	C8-C7-C14	-2.38	116.31	121.36
3	B	1542	TZ4	C20-N2-C6	-2.24	116.86	118.97
3	B	1542	TZ4	C32-C31-C33	-2.23	116.03	118.35
3	A	1543	TZ4	C15-C14-C7	-2.01	119.14	122.86
3	A	1543	TZ4	C34-C33-C31	2.16	121.66	119.11
2	A	1542	P6G	O7-C8-C9	2.21	120.56	110.37
3	B	1542	TZ4	C19-C15-C14	2.21	122.92	120.81
3	B	1542	TZ4	C2-C3-C4	2.21	124.68	121.57
3	B	1542	TZ4	C39-C30-N7	2.32	124.01	119.54
3	A	1543	TZ4	C42-C38-C37	2.36	117.53	113.55
3	B	1542	TZ4	C8-C7-N2	2.40	123.33	120.46
3	A	1543	TZ4	C19-C15-C14	3.01	123.67	120.81
3	A	1543	TZ4	C8-C7-N2	3.06	124.13	120.46
3	A	1543	TZ4	C41-C40-C39	3.16	119.31	112.85
3	B	1542	TZ4	C42-C38-C37	3.17	118.91	113.55
3	B	1542	TZ4	C41-C40-C39	3.38	119.76	112.85
2	A	1542	P6G	O19-C18-C17	3.77	133.99	111.91
3	A	1543	TZ4	N4-N5-N6	5.91	111.77	107.31
3	B	1542	TZ4	C29-C28-N6	6.50	121.86	110.92
3	B	1542	TZ4	N4-N5-N6	6.86	112.48	107.31
3	A	1543	TZ4	C29-C28-N6	8.30	124.88	110.92

There are no chirality outliers.

There are no torsion outliers.

There are no ring outliers.

3 monomers are involved in 21 short contacts:

Mol	Chain	Res	Type	Clashes	Symm-Clashes
2	A	1542	P6G	5	0
3	A	1543	TZ4	11	0
3	B	1542	TZ4	5	0

5.7 Other polymers [i](#)

There are no such residues in this entry.

5.8 Polymer linkage issues [i](#)

There are no chain breaks in this entry.

6 Fit of model and data

6.1 Protein, DNA and RNA chains

In the following table, the column labelled ‘#RSRZ > 2’ contains the number (and percentage) of RSRZ outliers, followed by percent RSRZ outliers for the chain as percentile scores relative to all X-ray entries and entries of similar resolution. The OWAB column contains the minimum, median, 95th percentile and maximum values of the occupancy-weighted average B-factor per residue. The column labelled ‘Q < 0.9’ lists the number of (and percentage) of residues with an average occupancy less than 0.9.

Mol	Chain	Analysed	<RSRZ>	#RSRZ>2	OWAB(Å ²)	Q<0.9
1	A	536/543 (98%)	-0.32	9 (1%) 70 71	36, 54, 76, 106	0
1	B	532/543 (97%)	-0.31	13 (2%) 59 59	41, 59, 82, 99	0
All	All	1068/1086 (98%)	-0.31	22 (2%) 63 64	36, 56, 80, 106	0

All (22) RSRZ outliers are listed below:

Mol	Chain	Res	Type	RSRZ
1	A	493	ARG	5.9
1	A	259	PRO	5.1
1	A	541	SER	5.0
1	A	496	LYS	3.9
1	B	497	SER	3.8
1	B	109	ALA	3.2
1	A	494	ASP	3.0
1	A	323	ASP	3.0
1	B	496	LYS	3.0
1	B	541	SER	3.0
1	B	78	PRO	3.0
1	B	323	ASP	2.9
1	A	492	PRO	2.9
1	A	495	SER	2.8
1	B	165	ARG	2.5
1	B	268	GLU	2.4
1	A	109	ALA	2.3
1	B	393	HIS	2.3
1	B	467	THR	2.2
1	B	492	PRO	2.1
1	B	495	SER	2.1
1	B	4	GLU	2.0

6.2 Non-standard residues in protein, DNA, RNA chains [i](#)

There are no non-standard protein/DNA/RNA residues in this entry.

6.3 Carbohydrates [i](#)

There are no carbohydrates in this entry.

6.4 Ligands [i](#)

In the following table, the Atoms column lists the number of modelled atoms in the group and the number defined in the chemical component dictionary. The B-factors column lists the minimum, median, 95th percentile and maximum values of B factors of atoms in the group. The column labelled 'Q< 0.9' lists the number of atoms with occupancy less than 0.9.

Mol	Type	Chain	Res	Atoms	RSCC	RSR	B-factors(\AA^2)	Q<0.9
3	TZ4	B	1542	50/50	0.81	0.25	54,84,102,103	0
3	TZ4	A	1543	50/50	0.82	0.26	47,65,83,83	0
2	P6G	A	1542	19/19	0.84	0.29	64,69,79,79	0

6.5 Other polymers [i](#)

There are no such residues in this entry.