



Full wwPDB X-ray Structure Validation Report ⓘ

Aug 15, 2023 – 10:49 AM EDT

PDB ID : 1XXM
Title : The modular architecture of protein-protein binding site
Authors : Reichmann, D.; Rahat, O.; Albeck, S.; Meged, R.; Dym, O.; Schreiber, G.;
Israel Structural Proteomics Center (ISPC)
Deposited on : 2004-11-07
Resolution : 1.90 Å(reported)

This is a Full wwPDB X-ray Structure Validation Report for a publicly released PDB entry.

We welcome your comments at validation@mail.wwpdb.org

A user guide is available at

<https://www.wwpdb.org/validation/2017/XrayValidationReportHelp>

with specific help available everywhere you see the ⓘ symbol.

The types of validation reports are described at

<http://www.wwpdb.org/validation/2017/FAQs#types>.

The following versions of software and data (see [references ⓘ](#)) were used in the production of this report:

MolProbity : 4.02b-467
Xtriage (Phenix) : 1.13
EDS : 2.35
Percentile statistics : 20191225.v01 (using entries in the PDB archive December 25th 2019)
Refmac : 5.8.0158
CCP4 : 7.0.044 (Gargrove)
Ideal geometry (proteins) : Engh & Huber (2001)
Ideal geometry (DNA, RNA) : Parkinson et al. (1996)
Validation Pipeline (wwPDB-VP) : 2.35

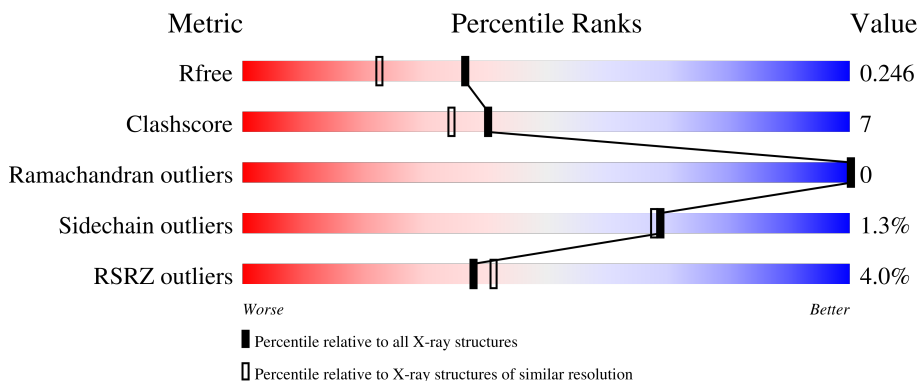
1 Overall quality at a glance i

The following experimental techniques were used to determine the structure:

X-RAY DIFFRACTION

The reported resolution of this entry is 1.90 Å.

Percentile scores (ranging between 0-100) for global validation metrics of the entry are shown in the following graphic. The table shows the number of entries on which the scores are based.



Metric	Whole archive (#Entries)	Similar resolution (#Entries, resolution range(Å))
R_{free}	130704	6207 (1.90-1.90)
Clashscore	141614	6847 (1.90-1.90)
Ramachandran outliers	138981	6760 (1.90-1.90)
Sidechain outliers	138945	6760 (1.90-1.90)
RSRZ outliers	127900	6082 (1.90-1.90)

The table below summarises the geometric issues observed across the polymeric chains and their fit to the electron density. The red, orange, yellow and green segments of the lower bar indicate the fraction of residues that contain outliers for ≥ 3 , 2, 1 and 0 types of geometric quality criteria respectively. A grey segment represents the fraction of residues that are not modelled. The numeric value for each fraction is indicated below the corresponding segment, with a dot representing fractions $\leq 5\%$. The upper red bar (where present) indicates the fraction of residues that have poor fit to the electron density. The numeric value is given above the bar.

Mol	Chain	Length	Quality of chain
1	A	263	 84% 16%
1	B	263	 82% 17%
2	C	165	 88% 12%
2	D	165	 88% 11%

2 Entry composition [i](#)

There are 4 unique types of molecules in this entry. The entry contains 6887 atoms, of which 0 are hydrogens and 0 are deuteriums.

In the tables below, the ZeroOcc column contains the number of atoms modelled with zero occupancy, the AltConf column contains the number of residues with at least one atom in alternate conformation and the Trace column contains the number of residues modelled with at most 2 atoms.

- Molecule 1 is a protein called Beta-lactamase TEM.

Mol	Chain	Residues	Atoms					ZeroOcc	AltConf	Trace
			Total	C	N	O	S			
1	A	263	2016	1258	360	387	11	0	0	0
1	B	263	2016	1258	360	387	11	0	0	0

There are 6 discrepancies between the modelled and reference sequences:

Chain	Residue	Modelled	Actual	Comment	Reference
A	84	ILE	VAL	engineered mutation	UNP P62593
A	104	ALA	GLU	engineered mutation	UNP P62593
A	105	ALA	TYR	engineered mutation	UNP P62593
B	84	ILE	VAL	engineered mutation	UNP P62593
B	104	ALA	GLU	engineered mutation	UNP P62593
B	105	ALA	TYR	engineered mutation	UNP P62593

- Molecule 2 is a protein called Beta-lactamase inhibitory protein.

Mol	Chain	Residues	Atoms					ZeroOcc	AltConf	Trace
			Total	C	N	O	S			
2	C	165	1218	763	206	242	7	0	0	0
2	D	165	1218	763	206	242	7	0	0	0

There are 6 discrepancies between the modelled and reference sequences:

Chain	Residue	Modelled	Actual	Comment	Reference
C	1074	ALA	LYS	engineered mutation	UNP P35804
C	1142	ALA	PHE	engineered mutation	UNP P35804
C	1143	ALA	TYR	engineered mutation	UNP P35804
D	1074	ALA	LYS	engineered mutation	UNP P35804
D	1142	ALA	PHE	engineered mutation	UNP P35804
D	1143	ALA	TYR	engineered mutation	UNP P35804

- Molecule 3 is CALCIUM ION (three-letter code: CA) (formula: Ca).

Mol	Chain	Residues	Atoms		ZeroOcc	AltConf
3	C	1	Total 1	Ca 1	0	0
3	D	1	Total 1	Ca 1	0	0

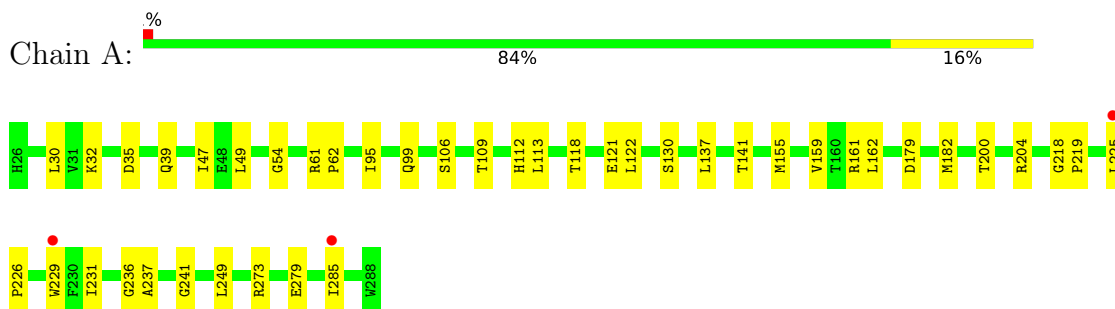
- Molecule 4 is water.

Mol	Chain	Residues	Atoms		ZeroOcc	AltConf
4	A	100	Total 100	O 100	0	0
4	C	120	Total 120	O 120	0	0
4	B	92	Total 92	O 92	0	0
4	D	105	Total 105	O 105	0	0

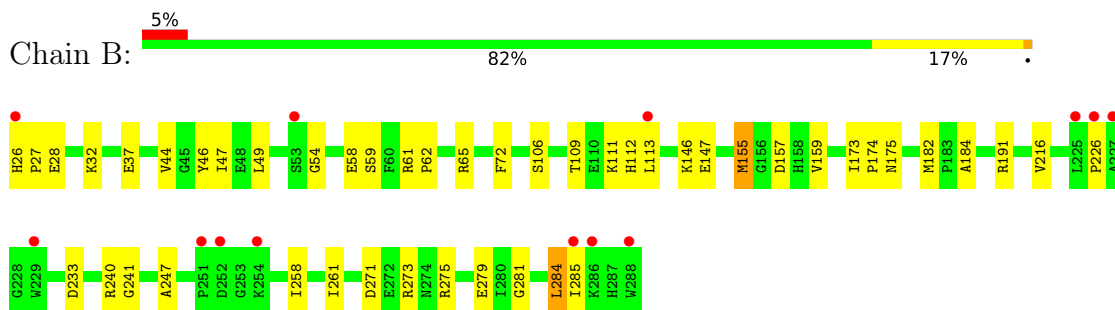
3 Residue-property plots [i](#)

These plots are drawn for all protein, RNA, DNA and oligosaccharide chains in the entry. The first graphic for a chain summarises the proportions of the various outlier classes displayed in the second graphic. The second graphic shows the sequence view annotated by issues in geometry and electron density. Residues are color-coded according to the number of geometric quality criteria for which they contain at least one outlier: green = 0, yellow = 1, orange = 2 and red = 3 or more. A red dot above a residue indicates a poor fit to the electron density ($RSRZ > 2$). Stretches of 2 or more consecutive residues without any outlier are shown as a green connector. Residues present in the sample, but not in the model, are shown in grey.

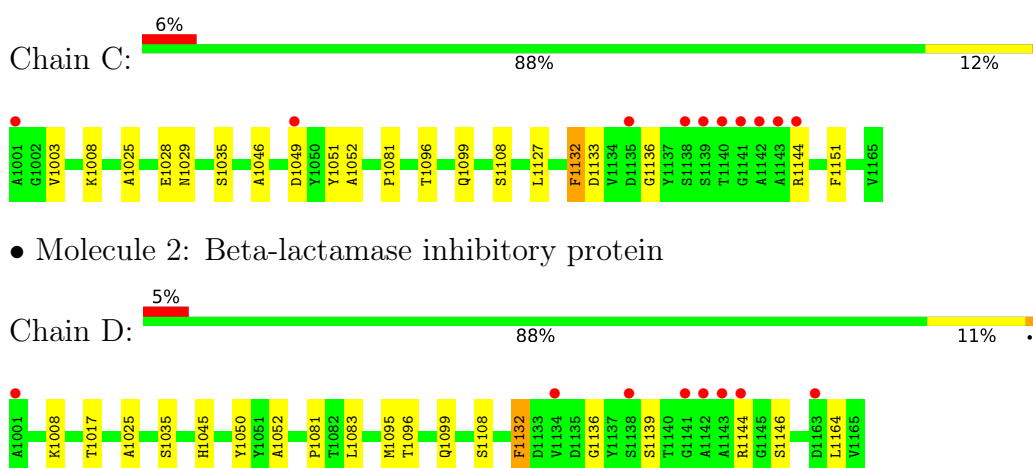
- Molecule 1: Beta-lactamase TEM



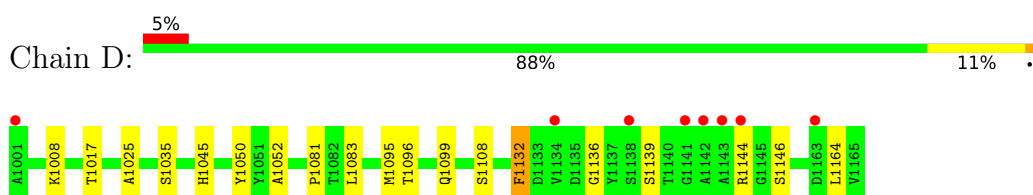
- Molecule 1: Beta-lactamase TEM



- Molecule 2: Beta-lactamase inhibitory protein



- Molecule 2: Beta-lactamase inhibitory protein



4 Data and refinement statistics

Property	Value	Source
Space group	P 21 21 21	Depositor
Cell constants a, b, c, α , β , γ	45.71Å 124.47Å 156.95Å 90.00° 90.00° 90.00°	Depositor
Resolution (Å)	40.00 – 1.90 39.24 – 1.90	Depositor EDS
% Data completeness (in resolution range)	99.7 (40.00-1.90) 99.8 (39.24-1.90)	Depositor EDS
R_{merge}	0.06	Depositor
R_{sym}	0.04	Depositor
$\langle I/\sigma(I) \rangle$ ¹	3.69 (at 1.89Å)	Xtrriage
Refinement program	CNS 1.1	Depositor
R, R_{free}	0.219 , 0.247 0.216 , 0.246	Depositor DCC
R_{free} test set	7231 reflections (10.12%)	wwPDB-VP
Wilson B-factor (Å ²)	22.7	Xtrriage
Anisotropy	0.207	Xtrriage
Bulk solvent k_{sol} (e/Å ³), B_{sol} (Å ²)	0.34 , 42.9	EDS
L-test for twinning ²	$\langle L \rangle = 0.46$, $\langle L^2 \rangle = 0.28$	Xtrriage
Estimated twinning fraction	No twinning to report.	Xtrriage
F_o, F_c correlation	0.94	EDS
Total number of atoms	6887	wwPDB-VP
Average B, all atoms (Å ²)	24.0	wwPDB-VP

Xtrriage's analysis on translational NCS is as follows: *The largest off-origin peak in the Patterson function is 4.13% of the height of the origin peak. No significant pseudotranslation is detected.*

¹Intensities estimated from amplitudes.

²Theoretical values of $\langle |L| \rangle$, $\langle L^2 \rangle$ for acentric reflections are 0.5, 0.333 respectively for untwinned datasets, and 0.375, 0.2 for perfectly twinned datasets.

5 Model quality [i](#)

5.1 Standard geometry [i](#)

Bond lengths and bond angles in the following residue types are not validated in this section: CA

The Z score for a bond length (or angle) is the number of standard deviations the observed value is removed from the expected value. A bond length (or angle) with $|Z| > 5$ is considered an outlier worth inspection. RMSZ is the root-mean-square of all Z scores of the bond lengths (or angles).

Mol	Chain	Bond lengths		Bond angles	
		RMSZ	# Z >5	RMSZ	# Z >5
1	A	0.29	0/2049	0.59	0/2775
1	B	0.29	0/2049	0.59	0/2775
2	C	0.33	0/1245	0.63	1/1691 (0.1%)
2	D	0.32	0/1245	0.62	1/1691 (0.1%)
All	All	0.31	0/6588	0.61	2/8932 (0.0%)

There are no bond length outliers.

All (2) bond angle outliers are listed below:

Mol	Chain	Res	Type	Atoms	Z	Observed(°)	Ideal(°)
2	C	1052	ALA	N-CA-C	-5.98	94.86	111.00
2	D	1052	ALA	N-CA-C	-5.31	96.66	111.00

There are no chirality outliers.

There are no planarity outliers.

5.2 Too-close contacts [i](#)

In the following table, the Non-H and H(model) columns list the number of non-hydrogen atoms and hydrogen atoms in the chain respectively. The H(added) column lists the number of hydrogen atoms added and optimized by MolProbity. The Clashes column lists the number of clashes within the asymmetric unit, whereas Symm-Clashes lists symmetry-related clashes.

Mol	Chain	Non-H	H(model)	H(added)	Clashes	Symm-Clashes
1	A	2016	0	2031	27	0
1	B	2016	0	2031	44	0
2	C	1218	0	1154	13	0
2	D	1218	0	1152	15	0
3	C	1	0	0	0	0

Continued on next page...

Continued from previous page...

Mol	Chain	Non-H	H(model)	H(added)	Clashes	Symm-Clashes
3	D	1	0	0	0	0
4	A	100	0	0	0	0
4	B	92	0	0	1	0
4	C	120	0	0	0	0
4	D	105	0	0	4	0
All	All	6887	0	6368	93	0

The all-atom clashscore is defined as the number of clashes found per 1000 atoms (including hydrogen atoms). The all-atom clashscore for this structure is 7.

All (93) close contacts within the same asymmetric unit are listed below, sorted by their clash magnitude.

Atom-1	Atom-2	Interatomic distance (Å)	Clash overlap (Å)
1:B:155:MET:HE1	1:B:157:ASP:HB2	1.49	0.95
2:D:1136:GLY:HA2	2:D:1144:ARG:O	1.81	0.81
2:D:1083:LEU:HD23	4:D:2007:HOH:O	1.91	0.70
2:D:1096:THR:H	2:D:1099:GLN:HE21	1.46	0.62
2:C:1096:THR:H	2:C:1099:GLN:HE21	1.47	0.62
1:B:155:MET:HE1	1:B:157:ASP:CB	2.28	0.62
1:B:26:HIS:CE1	1:B:28:GLU:HG2	2.37	0.60
1:B:281:GLY:HA2	1:B:284:LEU:HD12	1.84	0.59
1:B:173:ILE:HD13	1:B:240:ARG:HH22	1.68	0.59
1:B:47:ILE:HD12	1:B:184:ALA:HA	1.85	0.58
1:B:159:VAL:HG11	1:B:182:MET:HG3	1.85	0.58
1:A:99:GLN:NE2	1:A:113:LEU:HD21	2.18	0.58
1:B:106:SER:HB3	1:B:109:THR:OG1	2.05	0.56
1:B:155:MET:HE2	1:B:157:ASP:H	1.70	0.56
2:D:1164:LEU:HD21	4:D:2007:HOH:O	2.04	0.56
1:B:26:HIS:N	1:B:58:GLU:OE1	2.38	0.56
2:C:1028:GLU:H	2:C:1028:GLU:CD	2.08	0.56
1:B:173:ILE:CD1	1:B:240:ARG:HH22	2.19	0.56
1:A:200:THR:O	1:A:204:ARG:HG3	2.06	0.55
2:C:1136:GLY:HA2	2:C:1144:ARG:O	2.07	0.54
1:A:226:PRO:HD3	1:A:285:ILE:HD13	1.90	0.54
1:B:113:LEU:HD23	1:B:113:LEU:O	2.06	0.53
1:B:226:PRO:HD3	1:B:285:ILE:HD13	1.91	0.53
1:B:240:ARG:NH1	4:B:2183:HOH:O	2.41	0.53
1:B:47:ILE:HD12	1:B:184:ALA:CA	2.39	0.53
1:B:271:ASP:HB3	1:B:275:ARG:NH1	2.24	0.53
1:A:32:LYS:HE2	1:A:279:GLU:HB2	1.91	0.52
1:B:146:LYS:HG3	1:B:147:GLU:N	2.25	0.52

Continued on next page...

Continued from previous page...

Atom-1	Atom-2	Interatomic distance (Å)	Clash overlap (Å)
1:B:281:GLY:O	1:B:284:LEU:HD13	2.10	0.52
1:B:32:LYS:HE2	1:B:279:GLU:HB2	1.92	0.51
1:B:32:LYS:HE2	1:B:279:GLU:CB	2.40	0.51
1:A:32:LYS:HE2	1:A:279:GLU:CB	2.41	0.50
1:B:49:LEU:HD11	1:B:54:GLY:O	2.11	0.50
1:A:241:GLY:HA2	1:A:273:ARG:NH1	2.28	0.49
1:B:281:GLY:HA2	1:B:284:LEU:CD1	2.42	0.49
2:D:1096:THR:H	2:D:1099:GLN:NE2	2.11	0.49
1:A:226:PRO:HB2	1:A:229:TRP:CD1	2.49	0.48
2:D:1008:LYS:HD3	2:D:1025:ALA:HA	1.95	0.48
1:A:61:ARG:N	1:A:62:PRO:CD	2.77	0.48
2:D:1132:PHE:CD1	2:D:1132:PHE:N	2.81	0.48
1:A:35:ASP:O	1:A:39:GLN:HG2	2.14	0.48
1:B:61:ARG:N	1:B:62:PRO:CD	2.77	0.47
1:B:284:LEU:HD22	1:B:284:LEU:C	2.35	0.47
1:B:271:ASP:HB3	1:B:275:ARG:HH12	1.79	0.47
2:C:1046:ALA:HA	2:C:1051:TYR:CD2	2.49	0.47
1:B:241:GLY:HA2	1:B:273:ARG:NH1	2.29	0.47
1:B:191:ARG:HB2	1:B:258:ILE:HD12	1.97	0.46
1:A:112:HIS:HE1	2:C:1035:SER:O	1.99	0.46
1:A:118:THR:OG1	1:A:121:GLU:HG3	2.15	0.46
1:B:281:GLY:O	1:B:285:ILE:HG13	2.16	0.46
1:B:216:VAL:HG11	2:D:1050:TYR:HD1	1.81	0.45
2:D:1081:PRO:HA	2:D:1108:SER:HA	1.98	0.45
2:C:1003:VAL:HA	2:C:1029:ASN:OD1	2.16	0.45
2:D:1017:THR:HB	4:D:2059:HOH:O	2.15	0.45
1:A:99:GLN:NE2	1:A:113:LEU:CD2	2.79	0.45
1:A:218:GLY:N	1:A:219:PRO:HD2	2.31	0.45
1:A:106:SER:HB3	1:A:109:THR:OG1	2.16	0.45
1:B:216:VAL:CG1	2:D:1050:TYR:HD1	2.29	0.45
2:C:1081:PRO:HA	2:C:1108:SER:HA	1.99	0.44
1:B:46:TYR:HD1	1:B:261:ILE:HG12	1.82	0.44
1:B:281:GLY:O	1:B:284:LEU:CD1	2.66	0.43
2:D:1146:SER:HA	4:D:2007:HOH:O	2.17	0.43
1:A:161:ARG:O	1:A:179:ASP:HA	2.19	0.43
1:B:111:LYS:C	1:B:111:LYS:HD3	2.39	0.43
1:A:49:LEU:HD11	1:A:54:GLY:O	2.19	0.43
1:A:249:LEU:H	1:A:249:LEU:HD23	1.84	0.42
1:B:174:PRO:O	1:B:175:ASN:HB2	2.19	0.42
1:A:162:LEU:HD12	1:A:162:LEU:HA	1.85	0.42
2:C:1008:LYS:HD3	2:C:1025:ALA:HA	2.01	0.42

Continued on next page...

Continued from previous page...

Atom-1	Atom-2	Interatomic distance (Å)	Clash overlap (Å)
1:A:237:ALA:N	2:C:1049:ASP:OD2	2.53	0.42
1:A:236:GLY:HA2	2:C:1049:ASP:OD2	2.19	0.42
1:B:155:MET:HE2	1:B:157:ASP:N	2.33	0.42
2:C:1132:PHE:CD1	2:C:1132:PHE:N	2.88	0.41
1:B:37:GLU:HG2	1:B:44:VAL:HG23	2.02	0.41
1:B:26:HIS:ND1	1:B:28:GLU:HG2	2.35	0.41
1:B:65:ARG:NH1	1:B:182:MET:HE3	2.35	0.41
1:A:225:LEU:HA	1:A:226:PRO:HD3	1.94	0.41
1:B:112:HIS:HE1	2:D:1035:SER:O	2.02	0.41
1:A:32:LYS:HA	1:A:32:LYS:HD2	1.91	0.41
1:A:95:ILE:HD12	1:A:122:LEU:CD1	2.51	0.41
1:A:137:LEU:O	1:A:141:THR:HG23	2.21	0.41
1:B:155:MET:CE	1:B:157:ASP:N	2.84	0.41
2:C:1151:PHE:CD1	2:C:1151:PHE:N	2.89	0.41
1:B:28:GLU:OE1	1:B:28:GLU:HA	2.21	0.41
1:B:47:ILE:HG12	1:B:59:SER:HB3	2.03	0.41
2:D:1045:HIS:NE2	2:D:1139:SER:O	2.53	0.41
1:A:47:ILE:HD11	1:A:62:PRO:HB3	2.03	0.40
1:A:225:LEU:HD22	1:A:231:ILE:CG2	2.51	0.40
2:C:1133:ASP:OD1	2:C:1136:GLY:N	2.54	0.40
1:B:26:HIS:HA	1:B:27:PRO:HD3	1.93	0.40
1:B:233:ASP:HB3	1:B:247:ALA:HB2	2.03	0.40
1:A:159:VAL:HG11	1:A:182:MET:HG3	2.03	0.40
2:D:1095:MET:HA	2:D:1099:GLN:NE2	2.36	0.40

There are no symmetry-related clashes.

5.3 Torsion angles [\(i\)](#)

5.3.1 Protein backbone [\(i\)](#)

In the following table, the Percentiles column shows the percent Ramachandran outliers of the chain as a percentile score with respect to all X-ray entries followed by that with respect to entries of similar resolution.

The Analysed column shows the number of residues for which the backbone conformation was analysed, and the total number of residues.

Mol	Chain	Analysed	Favoured	Allowed	Outliers	Percentiles
1	A	261/263 (99%)	258 (99%)	3 (1%)	0	100 100

Continued on next page...

Continued from previous page...

Mol	Chain	Analysed	Favoured	Allowed	Outliers	Percentiles	
1	B	261/263 (99%)	252 (97%)	9 (3%)	0	100	100
2	C	163/165 (99%)	159 (98%)	4 (2%)	0	100	100
2	D	163/165 (99%)	158 (97%)	5 (3%)	0	100	100
All	All	848/856 (99%)	827 (98%)	21 (2%)	0	100	100

There are no Ramachandran outliers to report.

5.3.2 Protein sidechains [i](#)

In the following table, the Percentiles column shows the percent sidechain outliers of the chain as a percentile score with respect to all X-ray entries followed by that with respect to entries of similar resolution.

The Analysed column shows the number of residues for which the sidechain conformation was analysed, and the total number of residues.

Mol	Chain	Analysed	Rotameric	Outliers	Percentiles	
1	A	215/215 (100%)	212 (99%)	3 (1%)	67	65
1	B	215/215 (100%)	212 (99%)	3 (1%)	67	65
2	C	123/123 (100%)	121 (98%)	2 (2%)	62	60
2	D	123/123 (100%)	122 (99%)	1 (1%)	81	82
All	All	676/676 (100%)	667 (99%)	9 (1%)	69	68

All (9) residues with a non-rotameric sidechain are listed below:

Mol	Chain	Res	Type
1	A	30	LEU
1	A	130	SER
1	A	155	MET
2	C	1127	LEU
2	C	1132	PHE
1	B	72	PHE
1	B	155	MET
1	B	284	LEU
2	D	1132	PHE

Sometimes sidechains can be flipped to improve hydrogen bonding and reduce clashes. All (10) such sidechains are listed below:

Mol	Chain	Res	Type
1	A	112	HIS
1	A	132	ASN
1	A	206	GLN
2	C	1089	ASN
2	C	1099	GLN
1	B	88	GLN
1	B	112	HIS
1	B	132	ASN
2	D	1089	ASN
2	D	1099	GLN

5.3.3 RNA [i](#)

There are no RNA molecules in this entry.

5.4 Non-standard residues in protein, DNA, RNA chains [i](#)

There are no non-standard protein/DNA/RNA residues in this entry.

5.5 Carbohydrates [i](#)

There are no monosaccharides in this entry.

5.6 Ligand geometry [i](#)

Of 2 ligands modelled in this entry, 2 are monoatomic - leaving 0 for Mogul analysis.

There are no bond length outliers.

There are no bond angle outliers.

There are no chirality outliers.

There are no torsion outliers.

There are no ring outliers.

No monomer is involved in short contacts.

5.7 Other polymers [i](#)

There are no such residues in this entry.

5.8 Polymer linkage issues

There are no chain breaks in this entry.

6 Fit of model and data

6.1 Protein, DNA and RNA chains

In the following table, the column labelled ‘#RSRZ > 2’ contains the number (and percentage) of RSRZ outliers, followed by percent RSRZ outliers for the chain as percentile scores relative to all X-ray entries and entries of similar resolution. The OWAB column contains the minimum, median, 95th percentile and maximum values of the occupancy-weighted average B-factor per residue. The column labelled ‘Q < 0.9’ lists the number of (and percentage) of residues with an average occupancy less than 0.9.

Mol	Chain	Analysed	<RSRZ>	#RSRZ>2	OWAB(Å ²)	Q<0.9
1	A	263/263 (100%)	0.27	3 (1%) 80 82	13, 22, 35, 45	0
1	B	263/263 (100%)	0.45	13 (4%) 29 33	11, 25, 41, 51	0
2	C	165/165 (100%)	0.28	10 (6%) 21 24	15, 21, 36, 55	0
2	D	165/165 (100%)	0.25	8 (4%) 30 33	15, 23, 38, 50	0
All	All	856/856 (100%)	0.32	34 (3%) 38 41	11, 23, 39, 55	0

All (34) RSRZ outliers are listed below:

Mol	Chain	Res	Type	RSRZ
2	C	1143	ALA	6.4
2	C	1140	THR	6.0
1	B	229	TRP	5.1
2	D	1001	ALA	5.1
1	B	252	ASP	4.6
2	C	1139	SER	4.3
2	C	1001	ALA	4.0
2	C	1144	ARG	3.8
2	C	1141	GLY	3.7
1	B	226	PRO	3.6
2	C	1138	SER	3.5
2	D	1134	VAL	3.3
1	B	251	PRO	3.2
1	B	285	ILE	3.2
2	D	1144	ARG	3.1
1	B	26	HIS	3.0
2	D	1138	SER	2.9
1	B	288	TRP	2.9
1	B	225	LEU	2.8
2	C	1142	ALA	2.8
1	B	254	LYS	2.8

Continued on next page...

Continued from previous page...

Mol	Chain	Res	Type	RSRZ
2	D	1141	GLY	2.6
1	A	229	TRP	2.6
1	B	286	LYS	2.5
1	A	225	LEU	2.4
1	A	285	ILE	2.4
1	B	53	SER	2.3
1	B	113	LEU	2.3
2	C	1135	ASP	2.2
1	B	227	ALA	2.2
2	C	1049	ASP	2.1
2	D	1142	ALA	2.1
2	D	1143	ALA	2.1
2	D	1163	ASP	2.0

6.2 Non-standard residues in protein, DNA, RNA chains [i](#)

There are no non-standard protein/DNA/RNA residues in this entry.

6.3 Carbohydrates [i](#)

There are no monosaccharides in this entry.

6.4 Ligands [i](#)

In the following table, the Atoms column lists the number of modelled atoms in the group and the number defined in the chemical component dictionary. The B-factors column lists the minimum, median, 95th percentile and maximum values of B factors of atoms in the group. The column labelled 'Q< 0.9' lists the number of atoms with occupancy less than 0.9.

Mol	Type	Chain	Res	Atoms	RSCC	RSR	B-factors(\AA^2)	Q<0.9
3	CA	D	2001	1/1	0.13	0.26	98,98,98,98	0
3	CA	C	2002	1/1	0.85	0.14	79,79,79,79	0

6.5 Other polymers [i](#)

There are no such residues in this entry.