



## Full wwPDB EM Validation Report ⓘ

Nov 11, 2024 – 09:32 PM JST

PDB ID : 7XYA  
EMDB ID : EMD-33515  
Title : The cryo-EM structure of an AlpA-loading complex  
Authors : Wen, A.; Feng, Y.  
Deposited on : 2022-06-01  
Resolution : 3.30 Å (reported)

This is a Full wwPDB EM Validation Report for a publicly released PDB entry.

We welcome your comments at [validation@mail.wwpdb.org](mailto:validation@mail.wwpdb.org)

A user guide is available at

<https://www.wwpdb.org/validation/2017/EMValidationReportHelp>

with specific help available everywhere you see the ⓘ symbol.

The types of validation reports are described at

<http://www.wwpdb.org/validation/2017/FAQs#types>.

---

The following versions of software and data (see [references ⓘ](#)) were used in the production of this report:

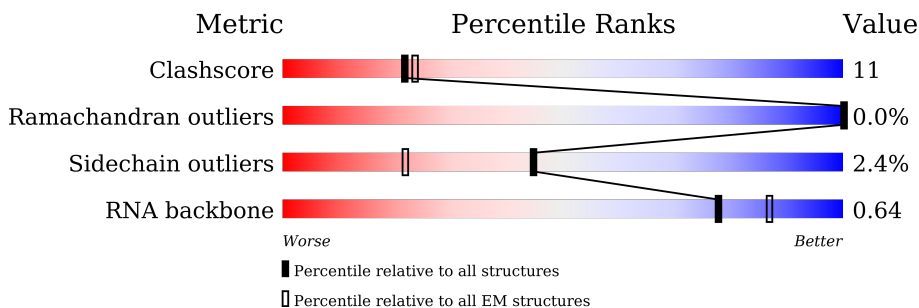
EMDB validation analysis : 0.0.1.dev113  
MolProbity : 4.02b-467  
Percentile statistics : 20231227.v01 (using entries in the PDB archive December 27th 2023)  
MapQ : 1.9.13  
Ideal geometry (proteins) : Engh & Huber (2001)  
Ideal geometry (DNA, RNA) : Parkinson et al. (1996)  
Validation Pipeline (wwPDB-VP) : 2.39

# 1 Overall quality at a glance

The following experimental techniques were used to determine the structure:  
*ELECTRON MICROSCOPY*

The reported resolution of this entry is 3.30 Å.

Percentile scores (ranging between 0-100) for global validation metrics of the entry are shown in the following graphic. The table shows the number of entries on which the scores are based.






Metric	Whole archive (#Entries)	EM structures (#Entries)
Clashscore	210492	15764
Ramachandran outliers	207382	16835
Sidechain outliers	206894	16415
RNA backbone	6643	2191

The table below summarises the geometric issues observed across the polymeric chains and their fit to the map. The red, orange, yellow and green segments of the bar indicate the fraction of residues that contain outliers for  $\geq 3$ , 2, 1 and 0 types of geometric quality criteria respectively. A grey segment represents the fraction of residues that are not modelled. The numeric value for each fraction is indicated below the corresponding segment, with a dot representing fractions  $\leq 5\%$ . The upper red bar (where present) indicates the fraction of residues that have poor fit to the EM map (all-atom inclusion  $< 40\%$ ). The numeric value is given above the bar.

Mol	Chain	Length	Quality of chain
1	A	333	50% 13% 35%
1	B	333	49% 13% 37%
2	C	1357	70% 17% 12%
3	D	1399	5% 72% 23% 10%
4	E	88	10% 50% 26% 24%
5	F	617	13% 31% 18% 51%
6	N	62	45% 48% 6%

Continued on next page...

*Continued from previous page...*

Mol	Chain	Length	Quality of chain
7	R	12	
8	T	62	
9	G	176	

## 2 Entry composition [i](#)

There are 10 unique types of molecules in this entry. The entry contains 26550 atoms, of which 0 are hydrogens and 0 are deuteriums.

In the tables below, the AltConf column contains the number of residues with at least one atom in alternate conformation and the Trace column contains the number of residues modelled with at most 2 atoms.

- Molecule 1 is a protein called DNA-directed RNA polymerase subunit alpha.

Mol	Chain	Residues	Atoms					AltConf	Trace
			Total	C	N	O	S		
1	A	215	Total	C	N	O	S	0	0
			1583	997	290	293	3		
1	B	209	Total	C	N	O	S	0	0
			1499	944	269	283	3		

- Molecule 2 is a protein called DNA-directed RNA polymerase subunit beta.

Mol	Chain	Residues	Atoms					AltConf	Trace
			Total	C	N	O	S		
2	C	1190	Total	C	N	O	S	0	0
			7936	4925	1476	1503	32		

- Molecule 3 is a protein called DNA-directed RNA polymerase subunit beta'.

Mol	Chain	Residues	Atoms					AltConf	Trace
			Total	C	N	O	S		
3	D	1338	Total	C	N	O	S	0	0
			9270	5845	1693	1698	34		

- Molecule 4 is a protein called DNA-directed RNA polymerase subunit omega.

Mol	Chain	Residues	Atoms					AltConf	Trace
			Total	C	N	O	S		
4	E	67	Total	C	N	O	S	0	0
			460	289	87	83	1		

- Molecule 5 is a protein called RNA polymerase sigma factor RpoD.

Mol	Chain	Residues	Atoms					AltConf	Trace
			Total	C	N	O	S		
5	F	302	Total	C	N	O	S	0	0
			2418	1522	437	448	11		

- Molecule 6 is a DNA chain called nontemplate strand DNA.

Mol	Chain	Residues	Atoms					AltConf	Trace
6	N	58	Total	C	N	O	P	0	0
			1196	568	224	346	58		

- Molecule 7 is a RNA chain called RNA.

Mol	Chain	Residues	Atoms					AltConf	Trace
7	R	10	Total	C	N	O	P	0	0
			209	94	36	69	10		

- Molecule 8 is a DNA chain called template strand DNA.

Mol	Chain	Residues	Atoms					AltConf	Trace
8	T	58	Total	C	N	O	P	0	0
			1195	568	221	348	58		

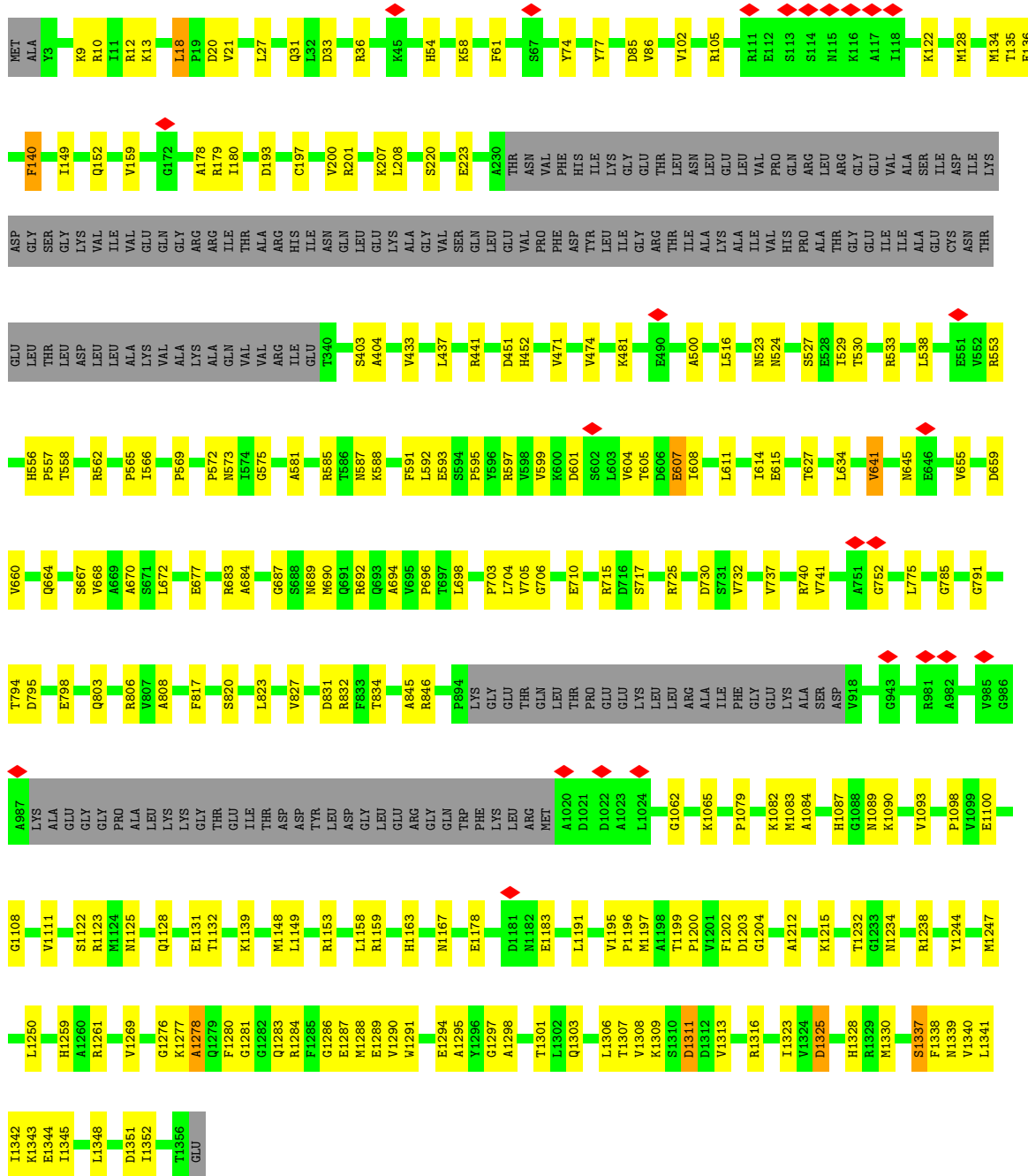
- Molecule 9 is a protein called AlpA.

Mol	Chain	Residues	Atoms				AltConf	Trace
9	G	158	Total	C	N	O	0	0
			783	467	158	158		

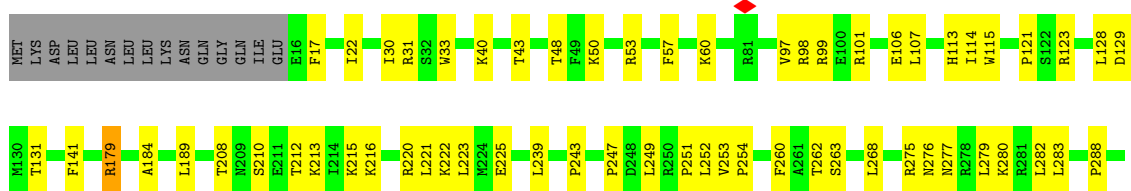
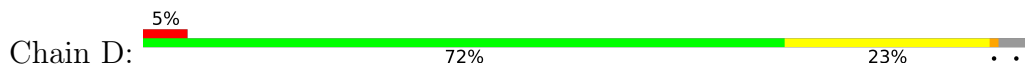
- Molecule 10 is MAGNESIUM ION (three-letter code: MG) (formula: Mg).

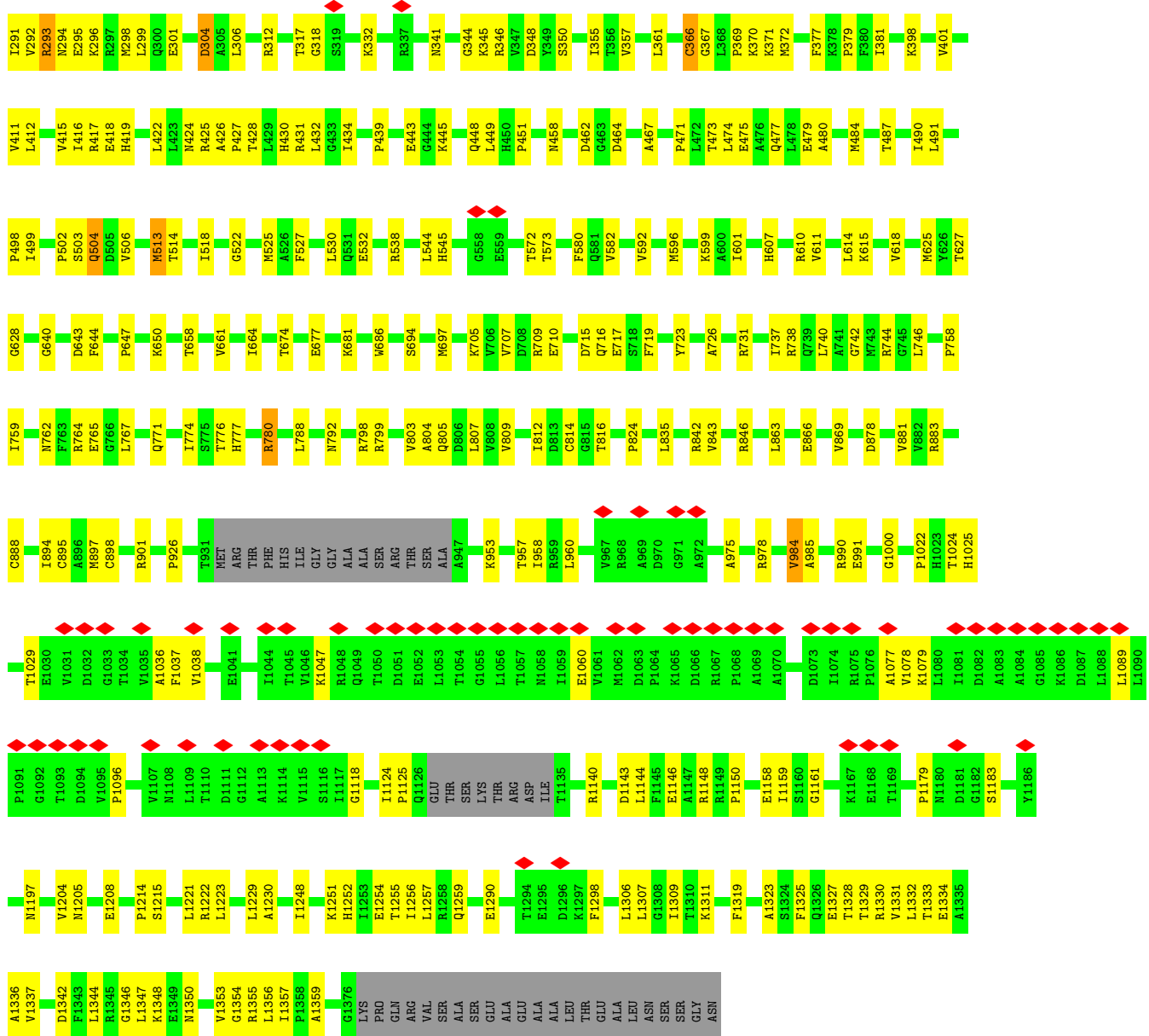
Mol	Chain	Residues	Atoms		AltConf
10	D	1	Total	Mg	0
			1	1	



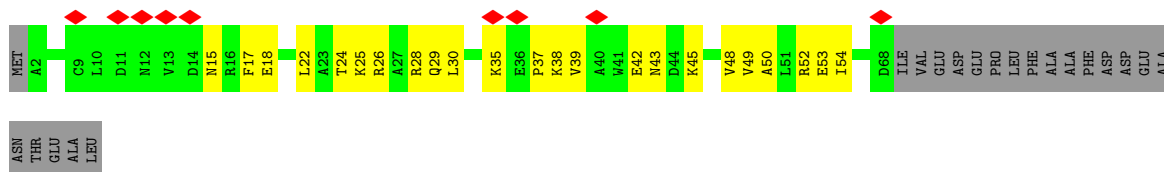


● Molecule 3: DNA-directed RNA polymerase subunit beta'

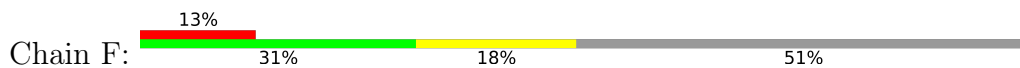




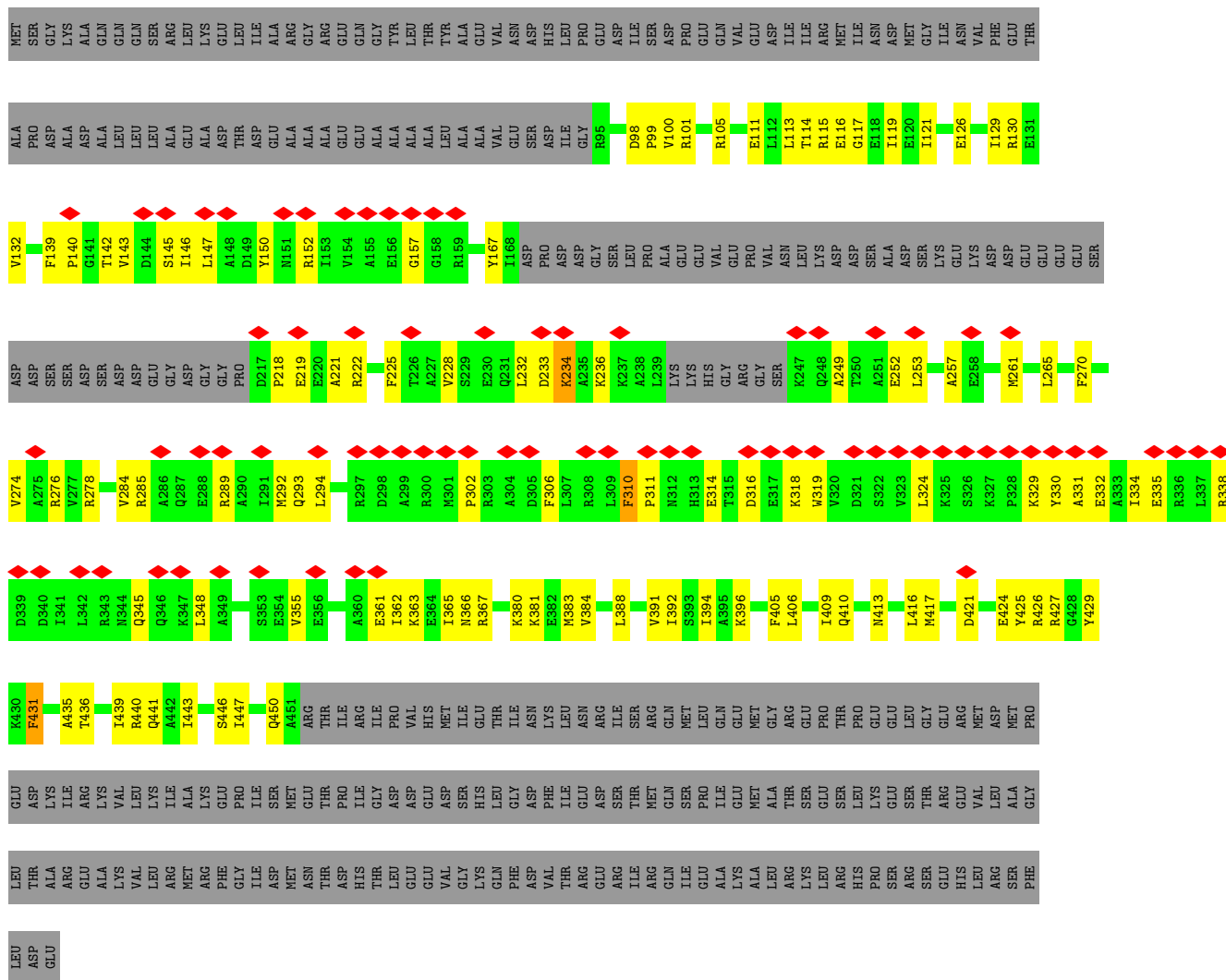
• Molecule 4: DNA-directed RNA polymerase subunit omega



• Molecule 5: RNA polymerase sigma factor RpoD



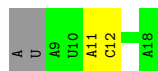




• Molecule 6: nontemplate strand DNA

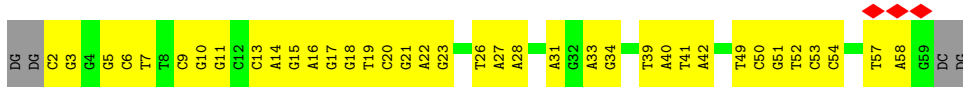


• Molecule 7: RNA

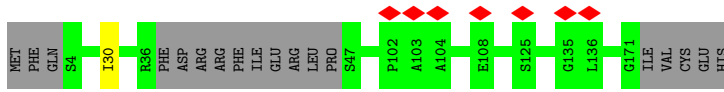
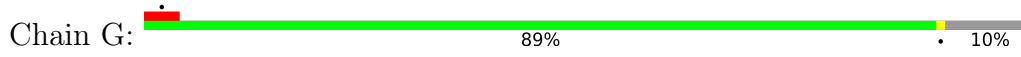


• Molecule 8: template strand DNA





● Molecule 9: AlpA



## 4 Experimental information

Property	Value	Source
EM reconstruction method	SINGLE PARTICLE	Depositor
Imposed symmetry	POINT, Not provided	
Number of particles used	64002	Depositor
Resolution determination method	FSC 0.143 CUT-OFF	Depositor
CTF correction method	PHASE FLIPPING AND AMPLITUDE CORRECTION	Depositor
Microscope	FEI TITAN KRIOS	Depositor
Voltage (kV)	300	Depositor
Electron dose ( $e^-/\text{\AA}^2$ )	62	Depositor
Minimum defocus (nm)	1000	Depositor
Maximum defocus (nm)	2000	Depositor
Magnification	Not provided	
Image detector	FEI FALCON IV (4k x 4k)	Depositor
Maximum map value	0.029	Depositor
Minimum map value	-0.011	Depositor
Average map value	0.000	Depositor
Map value standard deviation	0.001	Depositor
Recommended contour level	0.005	Depositor
Map size ( $\text{\AA}$ )	260.4, 260.4, 260.4	wwPDB
Map dimensions	280, 280, 280	wwPDB
Map angles ( $^\circ$ )	90.0, 90.0, 90.0	wwPDB
Pixel spacing ( $\text{\AA}$ )	0.93, 0.93, 0.93	Depositor

## 5 Model quality

### 5.1 Standard geometry

Bond lengths and bond angles in the following residue types are not validated in this section: MG

The Z score for a bond length (or angle) is the number of standard deviations the observed value is removed from the expected value. A bond length (or angle) with  $|Z| > 5$  is considered an outlier worth inspection. RMSZ is the root-mean-square of all Z scores of the bond lengths (or angles).

Mol	Chain	Bond lengths		Bond angles	
		RMSZ	# Z  >5	RMSZ	# Z  >5
1	A	0.26	0/1600	0.53	0/2171
1	B	0.26	0/1509	0.56	0/2052
2	C	0.29	0/8040	0.54	0/10949
3	D	0.27	0/9401	0.51	0/12780
4	E	0.26	0/463	0.54	0/628
5	F	0.26	0/2447	0.55	0/3285
6	N	0.50	0/1343	0.91	0/2072
7	R	0.24	0/232	0.82	0/358
8	T	0.50	0/1341	0.92	0/2069
9	G	0.24	0/781	0.35	0/1086
All	All	0.30	0/27157	0.58	0/37450

There are no bond length outliers.

There are no bond angle outliers.

There are no chirality outliers.

There are no planarity outliers.

### 5.2 Too-close contacts

In the following table, the Non-H and H(model) columns list the number of non-hydrogen atoms and hydrogen atoms in the chain respectively. The H(added) column lists the number of hydrogen atoms added and optimized by MolProbity. The Clashes column lists the number of clashes within the asymmetric unit, whereas Symm-Clashes lists symmetry-related clashes.

Mol	Chain	Non-H	H(model)	H(added)	Clashes	Symm-Clashes
1	A	1583	0	1592	32	0
1	B	1499	0	1469	31	0
2	C	7936	0	6781	170	0

*Continued on next page...*

*Continued from previous page...*

Mol	Chain	Non-H	H(model)	H(added)	Clashes	Symm-Clashes
3	D	9270	0	8577	229	0
4	E	460	0	423	22	0
5	F	2418	0	2495	82	0
6	N	1196	0	653	22	0
7	R	209	0	108	2	0
8	T	1195	0	654	27	0
9	G	783	0	381	1	0
10	D	1	0	0	0	0
All	All	26550	0	23133	560	0

The all-atom clashscore is defined as the number of clashes found per 1000 atoms (including hydrogen atoms). The all-atom clashscore for this structure is 11.

All (560) close contacts within the same asymmetric unit are listed below, sorted by their clash magnitude.

Atom-1	Atom-2	Interatomic distance (Å)	Clash overlap (Å)
2:C:1276:GLY:HA2	8:T:22:DA:OP1	1.45	1.15
2:C:569:PRO:HA	2:C:689:ASN:HD21	1.39	0.87
3:D:805:GLN:HE22	3:D:1348:LYS:HB2	1.46	0.80
1:A:104:LYS:HD3	1:A:110:VAL:HG12	1.62	0.80
3:D:1357:ILE:HG22	3:D:1359:ALA:H	1.47	0.78
2:C:1303:GLN:O	2:C:1307:THR:HB	1.83	0.77
3:D:1327:GLU:HB3	3:D:1330:ARG:HD3	1.68	0.76
2:C:134:MET:HA	2:C:140:PHE:HB3	1.69	0.75
2:C:1082:LYS:NZ	3:D:462:ASP:O	2.20	0.74
3:D:422:LEU:HD23	3:D:434:ILE:HD11	1.70	0.73
2:C:524:ASN:HD21	2:C:694:ALA:HB3	1.53	0.72
2:C:823:LEU:HD23	2:C:827:VAL:HG11	1.70	0.72
2:C:159:VAL:HG12	2:C:180:ILE:HG12	1.69	0.72
2:C:1087:HIS:NE2	2:C:1131:GLU:OE1	2.20	0.72
2:C:140:PHE:HZ	2:C:149:ILE:HG12	1.54	0.71
2:C:1284:ARG:NE	8:T:20:DC:OP1	2.22	0.71
3:D:824:PRO:HD3	3:D:835:LEU:HB2	1.72	0.71
2:C:179:ARG:NH1	6:N:44:DG:OP1	2.23	0.71
3:D:430:HIS:CD2	3:D:432:LEU:HB2	2.26	0.71
5:F:441:GLN:OE1	8:T:31:DA:N6	2.24	0.71
3:D:1221:LEU:HB2	3:D:1229:LEU:HD22	1.73	0.70
3:D:799:ARG:NH1	3:D:1146:GLU:OE2	2.24	0.70
5:F:361:GLU:O	5:F:365:ILE:HG13	1.93	0.69
3:D:129:ASP:OD2	3:D:220:ARG:NH1	2.26	0.69
4:E:39:VAL:HG12	4:E:53:GLU:HG2	1.74	0.69

*Continued on next page...*

*Continued from previous page...*

Atom-1	Atom-2	Interatomic distance (Å)	Clash overlap (Å)
2:C:1342:ILE:HD12	2:C:1352:ILE:HG21	1.73	0.69
1:B:32:GLU:HB2	1:B:35:PHE:HD1	1.57	0.69
1:A:11:PRO:HA	1:A:30:PRO:HG2	1.75	0.68
2:C:33:ASP:OD1	2:C:36:ARG:NH2	2.28	0.67
5:F:234:LYS:HE3	5:F:252:GLU:HG2	1.76	0.67
2:C:1328:HIS:HB3	3:D:473:THR:HA	1.75	0.67
1:B:47:LEU:HD13	1:B:204:LEU:HD21	1.77	0.67
2:C:1269:VAL:O	3:D:99:ARG:NH2	2.28	0.67
3:D:527:PHE:HD2	3:D:532:GLU:HG2	1.60	0.67
3:D:842:ARG:NH2	3:D:1254:GLU:OE1	2.29	0.66
3:D:1230:ALA:HA	3:D:1257:LEU:HD21	1.77	0.66
2:C:1090:LYS:HE2	3:D:462:ASP:HB2	1.78	0.66
3:D:726:ALA:HB2	3:D:737:ILE:HD11	1.77	0.66
2:C:1286:GLY:N	2:C:1289:GLU:OE1	2.28	0.66
3:D:978:ARG:NH2	3:D:1197:ASN:O	2.23	0.66
2:C:565:PRO:HB2	3:D:776:THR:HG21	1.78	0.66
3:D:807:LEU:HD12	3:D:1259:GLN:HE21	1.61	0.66
2:C:725:ARG:HH21	2:C:741:VAL:HG21	1.62	0.65
2:C:732:VAL:HG23	2:C:737:VAL:HG22	1.78	0.65
3:D:179:ARG:HB3	3:D:184:ALA:HB2	1.78	0.65
2:C:556:HIS:HB2	2:C:558:THR:HG22	1.79	0.65
3:D:799:ARG:HG2	3:D:1325:PHE:HZ	1.62	0.65
3:D:807:LEU:HD13	3:D:1255:THR:HG23	1.78	0.65
3:D:490:ILE:HD11	3:D:618:VAL:HG12	1.79	0.65
3:D:254:PRO:HG3	9:G:30:ILE:HA	1.77	0.65
5:F:380:LYS:NZ	5:F:421:ASP:OD1	2.29	0.65
3:D:506:VAL:HG23	3:D:628:GLY:HA3	1.79	0.64
3:D:644:PHE:O	3:D:764:ARG:NH1	2.30	0.64
2:C:1311:ASP:OD1	2:C:1337:SER:N	2.29	0.64
3:D:491:LEU:HD13	3:D:610:ARG:HH21	1.62	0.64
2:C:533:ARG:NH2	2:C:581:ALA:O	2.30	0.64
2:C:817:PHE:HZ	3:D:503:SER:HB3	1.62	0.64
5:F:100:VAL:HG22	5:F:406:LEU:HD21	1.80	0.63
8:T:16:DA:H2'	8:T:17:DG:C8	2.34	0.63
3:D:268:LEU:HD13	3:D:306:LEU:HA	1.80	0.62
3:D:426:ALA:HB3	3:D:427:PRO:HD3	1.82	0.62
1:A:12:ARG:HH21	1:B:229:ALA:HB2	1.64	0.62
3:D:788:LEU:O	3:D:792:ASN:ND2	2.29	0.62
2:C:441:ARG:O	2:C:441:ARG:NH1	2.31	0.62
5:F:152:ARG:O	5:F:157:GLY:N	2.32	0.62
2:C:599:VAL:HG12	2:C:604:VAL:HG13	1.82	0.62

*Continued on next page...*

Continued from previous page...

Atom-1	Atom-2	Interatomic distance (Å)	Clash overlap (Å)
4:E:30:LEU:HD11	4:E:37:PRO:HG3	1.82	0.62
2:C:845:ALA:HB3	2:C:1065:LYS:H	1.65	0.61
1:A:217:ARG:O	1:A:221:THR:HG23	2.00	0.61
3:D:746:LEU:HD13	3:D:758:PRO:HB3	1.80	0.61
2:C:1286:GLY:HA2	3:D:344:GLY:HA2	1.81	0.61
2:C:12:ARG:NE	2:C:798:GLU:OE2	2.32	0.61
2:C:31:GLN:NE2	2:C:149:ILE:O	2.32	0.61
2:C:10:ARG:NH2	2:C:795:ASP:OD1	2.34	0.60
3:D:416:ILE:HG23	3:D:439:PRO:HG2	1.82	0.60
2:C:659:ASP:OD1	2:C:664:GLN:NE2	2.34	0.60
2:C:1163:HIS:CE1	2:C:1167:ASN:HD22	2.19	0.60
5:F:219:GLU:HA	5:F:222:ARG:HE	1.66	0.60
5:F:285:ARG:O	5:F:289:ARG:HG2	2.03	0.59
3:D:504:GLN:HG2	3:D:731:ARG:HE	1.67	0.59
3:D:288:PRO:HB3	5:F:381:LYS:HG2	1.83	0.59
3:D:417:ARG:NH2	4:E:43:ASN:OD1	2.35	0.59
5:F:225:PHE:HA	5:F:228:VAL:HG12	1.85	0.59
4:E:50:ALA:O	4:E:54:ILE:HG12	2.03	0.59
5:F:257:ALA:O	5:F:261:MET:HB2	2.03	0.59
3:D:208:THR:HG21	3:D:213:LYS:HD3	1.83	0.58
3:D:705:LYS:HE2	3:D:716:GLN:HE21	1.67	0.58
2:C:1232:THR:HG21	2:C:1234:ASN:HD21	1.68	0.58
3:D:487:THR:HB	3:D:618:VAL:HG11	1.85	0.58
5:F:443:ILE:O	5:F:447:ILE:HG13	2.03	0.58
1:A:102:LEU:HD12	1:A:115:ILE:HG12	1.85	0.58
5:F:310:PHE:HE1	5:F:314:GLU:HA	1.69	0.58
3:D:480:ALA:HA	3:D:484:MET:HG3	1.84	0.58
1:B:47:LEU:HA	1:B:51:MET:HG3	1.86	0.58
3:D:774:ILE:HA	3:D:777:HIS:HD2	1.68	0.58
2:C:452:HIS:HA	2:C:558:THR:HG21	1.86	0.58
3:D:48:THR:OG1	3:D:50:LYS:NZ	2.35	0.58
2:C:1125:ASN:HD21	2:C:1128:GLN:HE21	1.51	0.58
5:F:335:GLU:HA	5:F:338:ARG:HG3	1.86	0.58
1:B:104:LYS:O	1:B:139:LEU:N	2.36	0.58
2:C:715:ARG:NH2	2:C:785:GLY:O	2.34	0.58
2:C:1295:ALA:HB3	3:D:431:ARG:HB3	1.85	0.58
3:D:475:GLU:OE1	4:E:28:ARG:NH2	2.37	0.58
3:D:279:LEU:O	3:D:283:LEU:HG	2.04	0.57
5:F:410:GLN:HA	5:F:413:ASN:HD22	1.68	0.57
2:C:152:GLN:NE2	2:C:538:LEU:O	2.32	0.57
2:C:687:GLY:HA2	2:C:690:MET:HE2	1.86	0.57

Continued on next page...

*Continued from previous page...*

Atom-1	Atom-2	Interatomic distance (Å)	Clash overlap (Å)
1:A:97:GLU:N	1:A:97:GLU:OE1	2.38	0.57
3:D:883:ARG:HB3	3:D:898:CYS:SG	2.44	0.57
2:C:1232:THR:HG21	2:C:1234:ASN:ND2	2.18	0.57
3:D:812:ILE:O	3:D:897:MET:HG2	2.04	0.57
1:B:100:LEU:HD21	1:B:121:VAL:HG21	1.87	0.57
5:F:425:TYR:OH	5:F:426:ARG:NH2	2.38	0.57
2:C:659:ASP:OD1	2:C:660:VAL:N	2.38	0.57
3:D:1290:GLU:HB3	3:D:1298:PHE:HB2	1.86	0.57
2:C:12:ARG:NH2	2:C:703:PRO:O	2.38	0.57
3:D:254:PRO:HA	3:D:260:PHE:HA	1.85	0.56
3:D:572:THR:OG1	3:D:573:THR:N	2.38	0.56
8:T:19:DT:H2'	8:T:20:DC:C6	2.40	0.56
3:D:901:ARG:O	3:D:1251:LYS:NZ	2.38	0.56
3:D:30:ILE:HD12	3:D:243:PRO:HG3	1.88	0.56
6:N:11:DC:H2''	6:N:12:DG:C8	2.40	0.56
5:F:391:VAL:HG11	5:F:413:ASN:OD1	2.06	0.56
2:C:1284:ARG:HA	3:D:346:ARG:HA	1.87	0.56
5:F:413:ASN:O	5:F:417:MET:HG3	2.05	0.56
5:F:446:SER:O	5:F:450:GLN:NE2	2.39	0.56
1:B:104:LYS:NZ	1:B:105:LYS:O	2.38	0.56
2:C:1339:ASN:O	2:C:1343:LYS:HG2	2.06	0.56
3:D:17:PHE:O	3:D:1355:ARG:NH2	2.25	0.56
3:D:381:ILE:HD11	3:D:412:LEU:HD13	1.88	0.56
3:D:888:CYS:HB2	3:D:898:CYS:SG	2.46	0.55
1:B:23:ARG:HG2	1:B:205:GLU:HB2	1.88	0.55
2:C:1297:GLY:HA3	4:E:17:PHE:CE1	2.40	0.55
3:D:418:GLU:HB2	4:E:45:LYS:HD3	1.88	0.55
3:D:53:ARG:HH21	3:D:60:LYS:HG3	1.70	0.55
4:E:42:GLU:OE1	4:E:42:GLU:N	2.40	0.55
2:C:1079:PRO:HA	2:C:1093:VAL:HG23	1.88	0.55
8:T:6:DC:H2''	8:T:7:DT:H72	1.88	0.55
3:D:121:PRO:O	3:D:123:ARG:NH1	2.39	0.55
8:T:18:DG:H2'	8:T:19:DT:C6	2.42	0.55
1:B:56:VAL:HG12	1:B:145:VAL:HG22	1.87	0.55
2:C:740:ARG:HE	2:C:752:GLY:HA3	1.71	0.55
2:C:1139:LYS:HG2	2:C:1244:TYR:CZ	2.42	0.55
3:D:1329:THR:O	3:D:1333:THR:HG23	2.07	0.55
2:C:1261:ARG:NH1	3:D:348:ASP:OD1	2.40	0.54
3:D:22:ILE:HG22	3:D:1336:ALA:HA	1.89	0.54
3:D:275:ARG:HD3	3:D:298:MET:HB3	1.89	0.54
8:T:39:DT:H2''	8:T:40:DA:C8	2.42	0.54

*Continued on next page...*



*Continued from previous page...*

Atom-1	Atom-2	Interatomic distance (Å)	Clash overlap (Å)
3:D:798:ARG:NH2	3:D:1325:PHE:O	2.40	0.54
6:N:9:DG:H2''	6:N:10:DA:H8	1.72	0.54
4:E:26:ARG:HH22	4:E:35:LYS:HB2	1.72	0.54
3:D:759:ILE:HG21	3:D:767:LEU:HD23	1.89	0.54
3:D:804:ALA:HA	3:D:1259:GLN:HG3	1.88	0.54
4:E:48:VAL:O	4:E:52:ARG:HG3	2.08	0.54
3:D:975:ALA:O	3:D:1000:GLY:N	2.40	0.54
3:D:503:SER:OG	3:D:504:GLN:OE1	2.25	0.54
3:D:1344:LEU:HD13	3:D:1353:VAL:HG11	1.89	0.54
2:C:599:VAL:HG21	2:C:655:VAL:HG12	1.90	0.54
2:C:698:LEU:HB2	2:C:834:THR:HG23	1.90	0.54
3:D:208:THR:HG22	3:D:210:SER:H	1.72	0.54
3:D:425:ARG:NH1	3:D:458:ASN:O	2.41	0.54
1:A:95:ARG:NH1	1:A:120:ASP:OD2	2.40	0.53
2:C:1200:PRO:HD2	2:C:1204:GLY:HA2	1.90	0.53
3:D:1350:ASN:HA	3:D:1353:VAL:HG12	1.90	0.53
8:T:57:DT:H2''	8:T:58:DA:N7	2.23	0.53
1:B:29:GLU:HA	1:B:199:LYS:HG3	1.91	0.53
2:C:54:HIS:HB2	2:C:77:TYR:HE1	1.73	0.53
4:E:49:VAL:O	4:E:53:GLU:HG3	2.08	0.53
6:N:33:DT:H6	6:N:33:DT:H5'	1.73	0.53
1:B:92:LEU:O	1:B:147:ARG:NH2	2.34	0.53
3:D:107:LEU:HD23	3:D:299:LEU:HD21	1.91	0.53
3:D:1143:ASP:OD1	3:D:1148:ARG:NH1	2.42	0.53
4:E:38:LYS:N	4:E:53:GLU:OE1	2.41	0.53
5:F:431:PHE:CE2	5:F:435:ALA:HB2	2.43	0.53
2:C:817:PHE:CZ	3:D:503:SER:HB3	2.42	0.53
4:E:25:LYS:O	4:E:29:GLN:HG3	2.09	0.53
5:F:427:ARG:HG3	5:F:429:TYR:HD1	1.74	0.53
2:C:140:PHE:CZ	2:C:149:ILE:HG12	2.39	0.53
3:D:1161:GLY:O	3:D:1204:VAL:N	2.38	0.53
5:F:335:GLU:HG2	5:F:338:ARG:HH21	1.73	0.53
2:C:1238:ARG:NH2	3:D:719:PHE:O	2.42	0.53
3:D:277:ASN:HA	3:D:280:LYS:HE2	1.91	0.53
5:F:143:VAL:O	5:F:147:LEU:HG	2.09	0.53
5:F:147:LEU:HD11	5:F:232:LEU:HD13	1.91	0.53
2:C:1082:LYS:HD3	2:C:1250:LEU:HD12	1.91	0.52
3:D:985:ALA:HA	3:D:991:GLU:HA	1.91	0.52
3:D:1025:HIS:N	3:D:1124:ILE:O	2.42	0.52
5:F:101:ARG:O	5:F:105:ARG:HG3	2.09	0.52
5:F:319:TRP:HE1	5:F:345:GLN:NE2	2.07	0.52

*Continued on next page...*

*Continued from previous page...*

Atom-1	Atom-2	Interatomic distance (Å)	Clash overlap (Å)
5:F:388:LEU:O	5:F:392:ILE:HG12	2.09	0.52
1:A:183:SER:HB2	1:A:203:ASP:HB3	1.91	0.52
3:D:294:ASN:OD1	5:F:410:GLN:NE2	2.42	0.52
6:N:14:DT:H2"	6:N:15:DA:C8	2.44	0.52
2:C:1232:THR:CG2	2:C:1234:ASN:ND2	2.73	0.52
3:D:762:ASN:ND2	3:D:765:GLU:OE1	2.42	0.52
2:C:1159:ARG:NH2	2:C:1178:GLU:O	2.43	0.52
2:C:1328:HIS:O	4:E:28:ARG:NH1	2.31	0.52
2:C:220:SER:HB3	2:C:223:GLU:HB3	1.91	0.52
2:C:573:ASN:OD1	2:C:573:ASN:N	2.42	0.52
2:C:672:LEU:HD22	2:C:710:GLU:HG3	1.91	0.52
3:D:251:PRO:O	3:D:263:SER:OG	2.27	0.52
8:T:49:DT:H2"	8:T:50:DC:C6	2.44	0.52
1:A:58:GLU:OE2	1:A:144:LYS:HE2	2.10	0.52
2:C:1283:GLN:HG2	3:D:350:SER:OG	2.09	0.52
3:D:843:VAL:HG13	3:D:883:ARG:HB2	1.91	0.52
3:D:1038:VAL:N	3:D:1077:ALA:O	2.42	0.52
3:D:1047:LYS:N	3:D:1060:GLU:O	2.43	0.52
3:D:814:CYS:SG	3:D:816:THR:HG22	2.50	0.51
5:F:218:PRO:O	5:F:222:ARG:HG3	2.10	0.51
5:F:249:ALA:O	5:F:253:LEU:HG	2.10	0.51
2:C:667:SER:OG	2:C:668:VAL:N	2.44	0.51
2:C:1311:ASP:OD2	3:D:345:LYS:NZ	2.43	0.51
1:B:32:GLU:HB2	1:B:35:PHE:CD1	2.43	0.51
5:F:388:LEU:O	5:F:391:VAL:HG12	2.11	0.51
2:C:1306:LEU:HD11	3:D:1354:GLY:HA2	1.93	0.51
2:C:575:GLY:HA2	3:D:780:ARG:HH21	1.75	0.51
5:F:113:LEU:HG	5:F:117:GLY:HA3	1.91	0.51
2:C:641:VAL:HG11	2:C:655:VAL:HG22	1.93	0.51
3:D:57:PHE:CD2	3:D:247:PRO:HB3	2.45	0.51
6:N:9:DG:H2"	6:N:10:DA:C8	2.46	0.51
1:B:11:PRO:HB3	1:B:30:PRO:HG2	1.93	0.51
3:D:644:PHE:HB2	3:D:764:ARG:HD2	1.93	0.51
5:F:316:ASP:HB2	5:F:318:LYS:HG2	1.93	0.50
1:A:230:PHE:CE2	1:B:43:LEU:HD11	2.46	0.50
2:C:587:ASN:OD1	2:C:588:LYS:N	2.44	0.50
5:F:143:VAL:O	5:F:146:ILE:HG22	2.11	0.50
5:F:150:TYR:OH	5:F:222:ARG:HG2	2.12	0.50
1:A:23:ARG:NH1	1:A:203:ASP:OD1	2.44	0.50
1:A:85:LEU:HA	1:A:88:LEU:HD23	1.93	0.50
2:C:1191:LEU:HD13	2:C:1195:VAL:HG22	1.93	0.50

*Continued on next page...*

*Continued from previous page...*

Atom-1	Atom-2	Interatomic distance (Å)	Clash overlap (Å)
3:D:341:ASN:O	3:D:345:LYS:NZ	2.39	0.50
8:T:22:DA:H2'	8:T:23:DG:C8	2.46	0.50
5:F:394:ILE:HD11	5:F:440:ARG:HG3	1.94	0.50
2:C:553:ARG:NH2	2:C:572:PRO:O	2.45	0.50
3:D:846:ARG:HG3	3:D:881:VAL:HG11	1.92	0.50
2:C:1323:ILE:HG21	3:D:379:PRO:HB2	1.93	0.50
3:D:398:LYS:HA	3:D:401:VAL:HG12	1.94	0.50
1:A:230:PHE:HE2	1:B:43:LEU:HD11	1.77	0.50
3:D:957:THR:O	3:D:985:ALA:N	2.45	0.50
3:D:958:ILE:HA	3:D:984:VAL:HA	1.94	0.50
7:R:11:A:H2'	7:R:12:C:C6	2.47	0.50
2:C:1311:ASP:OD2	2:C:1337:SER:HB2	2.11	0.50
3:D:686:TRP:CD2	3:D:758:PRO:HG3	2.47	0.50
3:D:1333:THR:O	3:D:1337:VAL:HG22	2.12	0.50
4:E:15:ASN:ND2	4:E:18:GLU:HB2	2.28	0.49
5:F:394:ILE:HG21	5:F:439:ILE:HG21	1.94	0.49
3:D:1205:ASN:O	3:D:1208:GLU:N	2.36	0.49
3:D:1319:PHE:CD1	3:D:1342:ASP:HB2	2.47	0.49
2:C:705:VAL:HG11	2:C:1131:GLU:HG3	1.94	0.49
2:C:1125:ASN:HD21	2:C:1128:GLN:NE2	2.10	0.49
3:D:128:LEU:HD21	3:D:189:LEU:HD23	1.94	0.49
1:B:187:GLU:O	1:B:199:LYS:N	2.44	0.49
3:D:580:PHE:HB2	3:D:592:VAL:HG11	1.95	0.49
2:C:21:VAL:HG11	2:C:597:ARG:HD2	1.95	0.49
2:C:178:ALA:HB2	2:C:437:LEU:HD13	1.94	0.49
3:D:742:GLY:O	3:D:762:ASN:HB3	2.13	0.49
3:D:114:ILE:HD13	3:D:304:ASP:HB2	1.93	0.49
2:C:527:SER:OG	2:C:692:ARG:O	2.31	0.49
3:D:276:ASN:O	3:D:280:LYS:HG3	2.13	0.49
3:D:1346:GLY:O	3:D:1350:ASN:ND2	2.43	0.48
5:F:139:PHE:HD1	5:F:140:PRO:HD2	1.78	0.48
3:D:424:ASN:HB3	3:D:434:ILE:HB	1.95	0.48
3:D:803:VAL:HG21	3:D:1309:ILE:HA	1.95	0.48
3:D:1029:THR:O	3:D:1118:GLY:N	2.35	0.48
2:C:61:PHE:HA	2:C:74:TYR:CD2	2.49	0.48
8:T:26:DT:H2''	8:T:27:DA:H5''	1.95	0.48
2:C:200:VAL:N	2:C:208:LEU:O	2.38	0.48
3:D:1037:PHE:HA	3:D:1078:VAL:HA	1.95	0.48
3:D:1323:ALA:O	3:D:1328:THR:OG1	2.24	0.48
3:D:1158:GLU:HB3	3:D:1159:ILE:HD12	1.95	0.48
8:T:9:DC:H2''	8:T:10:DG:C8	2.49	0.48

*Continued on next page...*

Continued from previous page...

Atom-1	Atom-2	Interatomic distance (Å)	Clash overlap (Å)
8:T:28:DA:H2'	8:T:28:DA:N3	2.28	0.48
3:D:428:THR:O	3:D:428:THR:OG1	2.32	0.48
3:D:674:THR:HB	3:D:677:GLU:HG2	1.95	0.48
2:C:587:ASN:N	2:C:591:PHE:O	2.33	0.48
3:D:506:VAL:HG21	3:D:625:MET:HA	1.94	0.48
4:E:15:ASN:HD22	4:E:18:GLU:HB2	1.77	0.48
1:B:179:VAL:HG21	1:B:182:VAL:HG22	1.95	0.48
2:C:1122:SER:HB3	3:D:731:ARG:HG3	1.96	0.48
3:D:582:VAL:HG21	3:D:627:THR:HG21	1.95	0.48
2:C:10:ARG:HD2	2:C:1196:PRO:HG3	1.95	0.47
2:C:846:ARG:HA	2:C:1062:GLY:O	2.14	0.47
1:A:118:ASP:OD1	1:A:119:HIS:N	2.45	0.47
2:C:1328:HIS:HB2	3:D:474:LEU:HD12	1.96	0.47
2:C:451:ASP:OD1	2:C:451:ASP:N	2.46	0.47
2:C:1287:GLU:OE1	2:C:1287:GLU:N	2.38	0.47
3:D:114:ILE:HD11	3:D:312:ARG:HD3	1.96	0.47
3:D:599:LYS:H	3:D:599:LYS:HD3	1.79	0.47
5:F:145:SER:OG	5:F:276:ARG:NH1	2.46	0.47
6:N:33:DT:H2''	6:N:34:DA:C8	2.49	0.47
8:T:41:DT:H2''	8:T:42:DA:H8	1.78	0.47
1:A:202:LEU:HD23	1:A:216:ILE:HD11	1.95	0.47
2:C:9:LYS:NZ	2:C:775:LEU:O	2.46	0.47
3:D:212:THR:O	3:D:216:LYS:HG2	2.14	0.47
3:D:522:GLY:O	3:D:525:MET:HE3	2.15	0.47
2:C:1297:GLY:HA3	4:E:17:PHE:HE1	1.80	0.47
3:D:502:PRO:HG2	3:D:601:ILE:HG21	1.95	0.47
1:A:224:GLN:OE1	1:B:224:GLN:HG2	2.15	0.47
3:D:647:PRO:HG3	3:D:697:MET:HB2	1.97	0.47
3:D:709:ARG:NH1	3:D:710:GLU:HB2	2.30	0.47
3:D:744:ARG:HB2	3:D:759:ILE:HB	1.96	0.47
3:D:863:LEU:HD21	3:D:901:ARG:HB2	1.97	0.47
5:F:126:GLU:HG3	5:F:130:ARG:NE	2.30	0.47
8:T:41:DT:H2''	8:T:42:DA:C8	2.49	0.47
2:C:566:ILE:HD12	2:C:684:ALA:HB1	1.96	0.47
3:D:1222:ARG:HG3	3:D:1223:LEU:HG	1.97	0.47
5:F:284:VAL:HG22	5:F:348:LEU:HD11	1.96	0.47
6:N:21:DA:H2''	6:N:22:DT:H5'	1.97	0.47
2:C:791:GLY:O	2:C:794:THR:OG1	2.33	0.47
2:C:1212:ALA:HA	2:C:1215:LYS:HG2	1.96	0.47
5:F:409:ILE:O	5:F:413:ASN:ND2	2.47	0.47
5:F:431:PHE:HD2	5:F:431:PHE:O	1.98	0.47

Continued on next page...

Continued from previous page...

Atom-1	Atom-2	Interatomic distance (Å)	Clash overlap (Å)
2:C:193:ASP:N	2:C:197:CYS:O	2.41	0.47
2:C:730:ASP:HB2	2:C:740:ARG:HG2	1.96	0.47
3:D:367:GLY:HA3	3:D:448:GLN:HB2	1.98	0.47
3:D:369:PRO:HG2	3:D:372:MET:HE3	1.97	0.47
3:D:926:PRO:HG3	3:D:1248:ILE:HD11	1.97	0.46
5:F:98:ASP:HB3	5:F:101:ARG:HB2	1.97	0.46
1:B:22:THR:O	1:B:205:GLU:HA	2.16	0.46
2:C:803:GLN:NE2	2:C:832:ARG:O	2.48	0.46
2:C:1128:GLN:O	2:C:1132:THR:OG1	2.29	0.46
6:N:31:DT:H2''	6:N:32:DA:H5'	1.98	0.46
3:D:106:GLU:O	3:D:276:ASN:ND2	2.44	0.46
6:N:4:DT:H2''	6:N:5:DA:C8	2.50	0.46
1:B:116:GLN:C	1:B:116:GLN:NE2	2.69	0.46
2:C:201:ARG:HB3	2:C:207:LYS:HA	1.98	0.46
2:C:585:ARG:O	2:C:593:GLU:N	2.47	0.46
2:C:601:ASP:N	2:C:601:ASP:OD1	2.46	0.46
3:D:514:THR:OG1	3:D:596:MET:HB2	2.15	0.46
3:D:809:VAL:HG12	3:D:894:ILE:HG23	1.96	0.46
3:D:1146:GLU:HB2	3:D:1148:ARG:HG3	1.97	0.46
3:D:640:GLY:N	3:D:643:ASP:OD2	2.39	0.46
3:D:1140:ARG:O	3:D:1144:LEU:HG	2.15	0.46
4:E:15:ASN:ND2	4:E:18:GLU:H	2.14	0.46
1:A:13:HIS:CG	1:A:13:HIS:O	2.69	0.46
4:E:42:GLU:OE1	4:E:52:ARG:NH2	2.49	0.46
1:B:77:ASP:OD1	1:B:79:ILE:HG22	2.16	0.46
2:C:77:TYR:HA	2:C:102:VAL:HA	1.97	0.46
3:D:1036:ALA:O	3:D:1079:LYS:N	2.42	0.46
3:D:1229:LEU:HD21	3:D:1306:LEU:HD22	1.98	0.46
5:F:143:VAL:HG12	5:F:232:LEU:HD11	1.98	0.46
2:C:706:GLY:O	2:C:1199:THR:N	2.43	0.46
2:C:611:LEU:HG	2:C:615:GLU:HB2	1.97	0.46
3:D:895:CYS:SG	3:D:898:CYS:HB2	2.56	0.46
3:D:1089:LEU:HA	3:D:1096:PRO:HA	1.98	0.46
1:A:27:THR:HG22	1:A:201:VAL:HG22	1.97	0.45
2:C:565:PRO:CB	3:D:776:THR:HG21	2.45	0.45
8:T:13:DC:C2	8:T:14:DA:N7	2.84	0.45
3:D:717:GLU:OE2	3:D:723:TYR:OH	2.34	0.45
1:B:111:THR:HG23	1:B:113:ALA:H	1.81	0.45
3:D:1024:THR:HA	3:D:1125:PRO:HA	1.98	0.45
6:N:41:DG:H2'	6:N:42:DC:C4	2.51	0.45
3:D:298:MET:SD	5:F:406:LEU:HB3	2.55	0.45

Continued on next page...

*Continued from previous page...*

Atom-1	Atom-2	Interatomic distance (Å)	Clash overlap (Å)
3:D:658:THR:HA	3:D:661:VAL:HG12	1.98	0.45
5:F:355:VAL:HG21	5:F:362:ILE:HD11	1.99	0.45
5:F:366:ASN:OD1	5:F:367:ARG:N	2.49	0.45
5:F:394:ILE:HD12	5:F:436:THR:HG23	1.98	0.45
2:C:562:ARG:HG2	2:C:592:LEU:HB3	1.99	0.45
2:C:1341:LEU:O	2:C:1345:ILE:HG12	2.17	0.45
2:C:1351:ASP:HA	3:D:33:TRP:HH2	1.82	0.45
3:D:98:ARG:HE	3:D:247:PRO:HG2	1.81	0.45
3:D:361:LEU:HD13	3:D:366:CYS:HA	1.99	0.45
6:N:6:DT:H2''	6:N:7:DG:C8	2.52	0.45
8:T:5:DG:H1'	8:T:6:DC:H5'	1.99	0.45
2:C:13:LYS:HB3	2:C:1197:MET:HG3	1.99	0.45
2:C:27:LEU:HD13	2:C:529:ILE:HG21	1.99	0.45
3:D:1347:LEU:HD22	3:D:1357:ILE:HG23	1.98	0.45
5:F:130:ARG:HB3	5:F:261:MET:SD	2.57	0.45
3:D:473:THR:O	3:D:477:GLN:HG3	2.17	0.45
5:F:139:PHE:HB3	5:F:142:THR:OG1	2.16	0.45
5:F:310:PHE:HD1	5:F:310:PHE:O	2.00	0.45
5:F:129:ILE:HA	5:F:132:VAL:HG22	1.98	0.45
5:F:293:GLN:HG3	5:F:294:LEU:N	2.32	0.45
8:T:15:DG:H2''	8:T:16:DA:C8	2.52	0.45
5:F:302:PRO:HD3	5:F:330:TYR:HD2	1.81	0.45
1:A:213:GLU:O	1:A:217:ARG:HG3	2.17	0.44
2:C:614:ILE:HD12	2:C:614:ILE:H	1.81	0.44
3:D:222:LYS:HE3	3:D:222:LYS:HB3	1.80	0.44
2:C:1289:GLU:HG3	3:D:428:THR:HG21	1.99	0.44
2:C:1352:ILE:HG12	3:D:22:ILE:HD13	2.00	0.44
3:D:221:LEU:O	3:D:225:GLU:HG3	2.18	0.44
3:D:960:LEU:HD23	3:D:960:LEU:HA	1.88	0.44
2:C:1298:ALA:HB1	2:C:1301:THR:CG2	2.47	0.44
3:D:744:ARG:HD3	3:D:767:LEU:HD21	2.00	0.44
2:C:403:SER:OG	2:C:404:ALA:N	2.50	0.44
2:C:471:VAL:O	2:C:474:VAL:HG12	2.18	0.44
2:C:1098:PRO:HB2	2:C:1100:GLU:OE1	2.17	0.44
3:D:878:ASP:HB3	3:D:990:ARG:HG2	1.99	0.44
1:B:20:SER:HB2	1:B:23:ARG:HB2	2.00	0.44
2:C:58:LYS:HA	2:C:58:LYS:HD3	1.82	0.44
2:C:566:ILE:HD11	2:C:670:ALA:HB1	2.00	0.44
3:D:113:HIS:CE1	3:D:115:TRP:HB2	2.53	0.44
5:F:329:LYS:HA	5:F:332:GLU:HG2	2.00	0.44
6:N:21:DA:H2'	6:N:22:DT:H71	1.99	0.44

*Continued on next page...*

*Continued from previous page...*

Atom-1	Atom-2	Interatomic distance (Å)	Clash overlap (Å)
8:T:10:DG:H2''	8:T:11:DG:C8	2.52	0.44
2:C:557:PRO:HB2	2:C:645:ASN:HB3	1.99	0.44
1:B:27:THR:HG23	1:B:201:VAL:HG22	2.00	0.44
3:D:292:VAL:O	3:D:296:LYS:HG2	2.18	0.44
1:B:57:VAL:HG12	1:B:174:ALA:HB2	1.99	0.44
2:C:677:GLU:HB3	2:C:1202:PHE:HD1	1.82	0.44
3:D:298:MET:HE1	5:F:410:GLN:HG3	1.99	0.44
8:T:20:DC:H2'	8:T:21:DG:O4'	2.18	0.44
1:A:216:ILE:HD13	1:A:216:ILE:HA	1.83	0.44
2:C:683:ARG:HA	2:C:683:ARG:HD3	1.74	0.44
3:D:43:THR:HB	3:D:57:PHE:CD1	2.53	0.44
3:D:223:LEU:HD23	3:D:223:LEU:HA	1.85	0.44
5:F:363:LYS:HA	5:F:366:ASN:ND2	2.32	0.44
1:A:67:GLU:HG3	1:A:79:ILE:HD11	2.00	0.43
2:C:152:GLN:HB2	2:C:516:LEU:HD11	2.00	0.43
2:C:1309:LYS:HB3	3:D:348:ASP:H	1.81	0.43
3:D:1307:LEU:HD23	3:D:1311:LYS:HG3	2.00	0.43
3:D:530:LEU:HD11	3:D:580:PHE:HD2	1.83	0.43
1:B:12:ARG:NE	1:B:12:ARG:HA	2.32	0.43
3:D:123:ARG:HH21	3:D:1334:GLU:HG2	1.83	0.43
3:D:1252:HIS:O	3:D:1256:ILE:HG12	2.18	0.43
2:C:128:MET:HA	2:C:500:ALA:HB1	2.00	0.43
2:C:1313:VAL:HA	2:C:1316:ARG:HH21	1.84	0.43
3:D:121:PRO:HG2	3:D:123:ARG:NH1	2.33	0.43
3:D:1332:LEU:HD23	3:D:1332:LEU:HA	1.82	0.43
1:A:58:GLU:OE1	1:A:169:ARG:NE	2.51	0.43
2:C:529:ILE:HD11	2:C:717:SER:HB2	2.01	0.43
5:F:331:ALA:HA	5:F:334:ILE:HD12	2.00	0.43
1:A:91:LYS:HE3	1:A:124:ILE:HD11	1.99	0.43
2:C:1089:ASN:HB3	2:C:1128:GLN:NE2	2.34	0.43
3:D:371:LYS:HE3	3:D:445:LYS:HZ3	1.83	0.43
3:D:1022:PRO:O	3:D:1024:THR:HG22	2.18	0.43
5:F:396:LYS:HD3	6:N:38:DG:OP1	2.19	0.43
2:C:85:ASP:OD1	2:C:86:VAL:N	2.52	0.43
2:C:105:ARG:HA	2:C:122:LYS:HA	2.01	0.43
3:D:419:HIS:NE2	3:D:471:PRO:O	2.50	0.43
3:D:1230:ALA:HA	3:D:1257:LEU:CD2	2.47	0.43
5:F:405:PHE:O	5:F:409:ILE:HG23	2.19	0.43
6:N:45:DC:H2''	6:N:46:DT:C6	2.53	0.43
2:C:806:ARG:HB2	2:C:1244:TYR:CZ	2.53	0.43
2:C:1351:ASP:HA	3:D:33:TRP:CH2	2.53	0.43

*Continued on next page...*



*Continued from previous page...*

Atom-1	Atom-2	Interatomic distance (Å)	Clash overlap (Å)
3:D:370:LYS:HE3	3:D:443:GLU:HG3	2.00	0.43
2:C:1261:ARG:HE	2:C:1281:GLY:H	1.67	0.43
2:C:1284:ARG:HB3	3:D:346:ARG:HG2	2.00	0.43
2:C:1340:VAL:HG22	3:D:249:LEU:HD22	2.01	0.43
3:D:371:LYS:HE2	3:D:371:LYS:HB2	1.73	0.43
3:D:518:ILE:HB	3:D:707:VAL:HG21	2.00	0.43
3:D:355:ILE:HD11	3:D:464:ASP:HB2	2.00	0.43
2:C:595:PRO:HB2	2:C:608:ILE:HD11	2.00	0.42
2:C:1301:THR:HG22	3:D:479:GLU:OE1	2.19	0.42
2:C:1308:VAL:HG21	2:C:1330:MET:HG2	2.00	0.42
3:D:888:CYS:SG	3:D:895:CYS:CB	3.05	0.42
3:D:1323:ALA:HA	3:D:1331:VAL:HG11	2.01	0.42
5:F:139:PHE:HE1	5:F:355:VAL:HG12	1.83	0.42
1:A:54:CYS:SG	1:A:90:ILE:HG13	2.60	0.42
1:A:94:GLY:H	1:A:120:ASP:HB2	1.85	0.42
3:D:650:LYS:NZ	3:D:765:GLU:OE1	2.52	0.42
8:T:53:DC:H2''	8:T:54:DC:C5	2.55	0.42
1:B:48:LEU:HD12	1:B:48:LEU:HA	1.76	0.42
2:C:1338:PHE:O	2:C:1342:ILE:HG12	2.20	0.42
4:E:45:LYS:O	4:E:49:VAL:HG12	2.18	0.42
5:F:324:LEU:HA	5:F:331:ALA:HB1	2.00	0.42
2:C:1122:SER:OG	2:C:1123:ARG:N	2.53	0.42
2:C:1123:ARG:O	2:C:1125:ASN:N	2.50	0.42
3:D:317:THR:OG1	3:D:318:GLY:N	2.52	0.42
2:C:523:ASN:O	2:C:696:PRO:HD3	2.18	0.42
2:C:530:THR:HG21	2:C:692:ARG:HG3	2.01	0.42
2:C:1284:ARG:NH2	3:D:344:GLY:HA3	2.34	0.42
3:D:1179:PRO:HD2	3:D:1183:SER:HA	2.01	0.42
5:F:424:GLU:OE1	6:N:32:DA:N6	2.51	0.42
6:N:54:DA:H2''	6:N:55:DA:C8	2.54	0.42
3:D:491:LEU:HA	3:D:498:PRO:HA	2.01	0.42
3:D:615:LYS:HE2	3:D:615:LYS:HB3	1.81	0.42
2:C:1259:HIS:HE1	2:C:1280:PHE:HA	1.85	0.42
3:D:215:LYS:HE2	3:D:215:LYS:HB3	1.74	0.42
5:F:310:PHE:N	5:F:311:PRO:HD2	2.35	0.42
6:N:51:DC:H2''	6:N:52:DC:H5''	2.00	0.42
1:B:77:ASP:OD1	1:B:77:ASP:C	2.58	0.42
2:C:1290:VAL:HG12	2:C:1294:GLU:OE1	2.20	0.42
2:C:1340:VAL:O	2:C:1344:GLU:HG3	2.20	0.42
5:F:115:ARG:O	5:F:119:ILE:HG12	2.20	0.42
5:F:310:PHE:CD1	5:F:310:PHE:C	2.92	0.42

*Continued on next page...*



*Continued from previous page...*

Atom-1	Atom-2	Interatomic distance (Å)	Clash overlap (Å)
8:T:33:DA:C6	8:T:34:DG:C6	3.07	0.42
2:C:1348:LEU:HA	2:C:1348:LEU:HD23	1.84	0.42
3:D:288:PRO:HG2	3:D:291:ILE:HG22	2.01	0.42
3:D:759:ILE:HG23	3:D:771:GLN:HB3	2.01	0.42
3:D:1150:PRO:HG3	3:D:1214:PRO:HG2	2.01	0.42
1:A:49:SER:OG	1:A:50:SER:N	2.53	0.42
2:C:1291:TRP:HH2	3:D:798:ARG:HG3	1.84	0.42
3:D:282:LEU:HD21	3:D:295:GLU:HG2	2.01	0.42
3:D:1353:VAL:HG13	3:D:1355:ARG:HG3	2.02	0.42
2:C:595:PRO:HB2	2:C:660:VAL:HG21	2.02	0.41
2:C:1178:GLU:HB3	2:C:1183:GLU:HB3	2.02	0.41
2:C:1261:ARG:HD2	2:C:1281:GLY:C	2.40	0.41
3:D:357:VAL:HG23	3:D:451:PRO:HG3	2.01	0.41
3:D:432:LEU:CD1	3:D:499:ILE:HG21	2.49	0.41
3:D:614:LEU:O	3:D:618:VAL:HG13	2.20	0.41
5:F:413:ASN:O	5:F:416:LEU:HG	2.19	0.41
1:A:31:LEU:HD23	1:A:31:LEU:HA	1.92	0.41
3:D:301:GLU:OE2	5:F:99:PRO:HG2	2.21	0.41
3:D:866:GLU:HA	3:D:869:VAL:HG12	2.02	0.41
5:F:274:VAL:O	5:F:278:ARG:HG2	2.19	0.41
2:C:18:LEU:HD21	2:C:1203:ASP:HB3	2.01	0.41
3:D:411:VAL:O	3:D:415:VAL:HG13	2.19	0.41
3:D:607:HIS:CE1	3:D:611:VAL:HG21	2.55	0.41
6:N:49:DG:C2	8:T:14:DA:C2	3.08	0.41
8:T:51:DG:H2''	8:T:52:DT:H5'	2.02	0.41
1:A:118:ASP:HB3	1:A:121:VAL:HB	2.02	0.41
1:B:11:PRO:HB3	1:B:30:PRO:HD2	2.02	0.41
1:B:56:VAL:HG23	1:B:172:LEU:HD11	2.03	0.41
3:D:298:MET:CE	5:F:410:GLN:HG3	2.51	0.41
5:F:111:GLU:N	5:F:111:GLU:OE1	2.53	0.41
2:C:1083:MET:HE3	2:C:1083:MET:HB3	1.94	0.41
2:C:1277:LYS:O	2:C:1278:ALA:HB2	2.20	0.41
5:F:265:LEU:HD11	5:F:270:PHE:HD1	1.85	0.41
6:N:55:DA:H2''	6:N:56:DG:C8	2.56	0.41
1:A:50:SER:HB3	1:A:149:ARG:HD2	2.02	0.41
2:C:605:THR:HG22	2:C:607:GLU:H	1.85	0.41
2:C:1148:MET:HG3	2:C:1153:ARG:HG3	2.01	0.41
2:C:1288:MET:HA	2:C:1291:TRP:CE3	2.56	0.41
3:D:239:LEU:O	3:D:239:LEU:HD12	2.20	0.41
3:D:740:LEU:HD12	3:D:740:LEU:HA	1.89	0.41
5:F:302:PRO:HD3	5:F:330:TYR:CD2	2.56	0.41

*Continued on next page...*

Continued from previous page...

Atom-1	Atom-2	Interatomic distance (Å)	Clash overlap (Å)
3:D:513:MET:HG3	3:D:544:LEU:HD11	2.03	0.41
3:D:694:SER:HB2	3:D:738:ARG:HG3	2.03	0.41
3:D:953:LYS:HE3	3:D:953:LYS:HB3	1.85	0.41
3:D:1221:LEU:HD22	3:D:1306:LEU:HB2	2.01	0.41
5:F:114:THR:OG1	5:F:116:GLU:HG3	2.20	0.41
5:F:121:ILE:HG21	5:F:383:MET:HB2	2.02	0.41
5:F:233:ASP:HA	5:F:236:LYS:HE3	2.02	0.41
2:C:569:PRO:HG2	2:C:573:ASN:O	2.21	0.41
2:C:627:THR:O	2:C:634:LEU:HA	2.21	0.41
2:C:1325:ASP:OD2	2:C:1325:ASP:N	2.54	0.41
3:D:141:PHE:CD2	3:D:293:ARG:HB2	2.56	0.41
3:D:332:LYS:HE3	3:D:332:LYS:HB2	1.90	0.41
5:F:221:ALA:HB1	5:F:225:PHE:CE2	2.56	0.41
6:N:4:DT:H2''	6:N:5:DA:N7	2.36	0.41
1:B:125:ASN:OD1	1:B:125:ASN:N	2.51	0.41
2:C:180:ILE:HD11	2:C:433:VAL:HG21	2.03	0.41
2:C:704:LEU:HD23	2:C:704:LEU:HA	1.91	0.41
3:D:97:VAL:O	3:D:101:ARG:HG3	2.21	0.41
3:D:449:LEU:HD23	3:D:449:LEU:HA	1.91	0.41
8:T:51:DG:H1'	8:T:52:DT:H5'	2.02	0.41
1:A:120:ASP:OD1	1:A:120:ASP:N	2.47	0.40
3:D:252:LEU:HG	3:D:252:LEU:O	2.22	0.40
3:D:475:GLU:HG3	4:E:24:THR:HG21	2.02	0.40
3:D:1356:LEU:HD23	3:D:1356:LEU:HA	1.97	0.40
1:A:44:ARG:HA	1:A:182:VAL:HG11	2.02	0.40
2:C:135:THR:HG22	2:C:136:GLU:H	1.86	0.40
2:C:690:MET:CE	2:C:1084:ALA:HB1	2.51	0.40
4:E:22:LEU:HD11	4:E:54:ILE:HD12	2.03	0.40
5:F:319:TRP:HE1	5:F:345:GLN:HE22	1.69	0.40
6:N:27:DT:H2''	6:N:28:DC:H5'	2.02	0.40
8:T:2:DC:H2''	8:T:3:DG:N7	2.35	0.40
3:D:288:PRO:HG3	5:F:384:VAL:HG21	2.03	0.40
3:D:377:PHE:HE2	3:D:419:HIS:CD2	2.40	0.40
3:D:424:ASN:OD1	3:D:467:ALA:HB3	2.21	0.40
5:F:365:ILE:HG13	5:F:365:ILE:H	1.72	0.40
2:C:808:ALA:HB2	2:C:1111:VAL:HG21	2.03	0.40
2:C:1149:LEU:HD13	2:C:1158:LEU:HD11	2.03	0.40
3:D:664:ILE:HD12	3:D:681:LYS:NZ	2.37	0.40
5:F:126:GLU:HA	5:F:129:ILE:HG22	2.03	0.40
7:R:11:A:H2'	7:R:12:C:H6	1.83	0.40
1:A:183:SER:OG	2:C:1108:GLY:HA3	2.22	0.40

Continued on next page...

Continued from previous page...

Atom-1	Atom-2	Interatomic distance (Å)	Clash overlap (Å)
2:C:677:GLU:O	3:D:767:LEU:HD12	2.21	0.40
3:D:432:LEU:HD11	3:D:499:ILE:HG21	2.03	0.40

There are no symmetry-related clashes.

## 5.3 Torsion angles [i](#)

### 5.3.1 Protein backbone [i](#)

In the following table, the Percentiles column shows the percent Ramachandran outliers of the chain as a percentile score with respect to all PDB entries followed by that with respect to all EM entries.

The Analysed column shows the number of residues for which the backbone conformation was analysed, and the total number of residues.

Mol	Chain	Analysed	Favoured	Allowed	Outliers	Percentiles	
1	A	211/333 (63%)	205 (97%)	6 (3%)	0	100	100
1	B	201/333 (60%)	193 (96%)	8 (4%)	0	100	100
2	C	1182/1357 (87%)	1125 (95%)	56 (5%)	1 (0%)	48	76
3	D	1332/1399 (95%)	1275 (96%)	57 (4%)	0	100	100
4	E	65/88 (74%)	62 (95%)	3 (5%)	0	100	100
5	F	296/617 (48%)	289 (98%)	7 (2%)	0	100	100
9	G	154/176 (88%)	152 (99%)	2 (1%)	0	100	100
All	All	3441/4303 (80%)	3301 (96%)	139 (4%)	1 (0%)	100	100

All (1) Ramachandran outliers are listed below:

Mol	Chain	Res	Type
2	C	1278	ALA

### 5.3.2 Protein sidechains [i](#)

In the following table, the Percentiles column shows the percent sidechain outliers of the chain as a percentile score with respect to all PDB entries followed by that with respect to all EM entries.

The Analysed column shows the number of residues for which the sidechain conformation was

analysed, and the total number of residues.

Mol	Chain	Analysed	Rotameric	Outliers	Percentiles	
1	A	158/284 (56%)	152 (96%)	6 (4%)	28	56
1	B	144/284 (51%)	137 (95%)	7 (5%)	21	49
2	C	612/1143 (54%)	600 (98%)	12 (2%)	50	71
3	D	789/1169 (68%)	772 (98%)	17 (2%)	47	69
4	E	37/74 (50%)	37 (100%)	0	100	100
5	F	253/524 (48%)	247 (98%)	6 (2%)	44	68
All	All	1993/3478 (57%)	1945 (98%)	48 (2%)	45	68

All (48) residues with a non-rotameric sidechain are listed below:

Mol	Chain	Res	Type
1	A	8	PHE
1	A	49	SER
1	A	107	SER
1	A	119	HIS
1	A	166	SER
1	A	224	GLN
1	B	69	SER
1	B	77	ASP
1	B	116	GLN
1	B	117	LEU
1	B	141	MET
1	B	143	LEU
1	B	203	ASP
2	C	18	LEU
2	C	20	ASP
2	C	140	PHE
2	C	481	LYS
2	C	607	GLU
2	C	641	VAL
2	C	820	SER
2	C	831	ASP
2	C	1247	MET
2	C	1311	ASP
2	C	1325	ASP
2	C	1337	SER
3	D	31	ARG
3	D	40	LYS
3	D	131	THR

*Continued on next page...*

*Continued from previous page...*

Mol	Chain	Res	Type
3	D	179	ARG
3	D	253	VAL
3	D	262	THR
3	D	293	ARG
3	D	304	ASP
3	D	366	CYS
3	D	504	GLN
3	D	513	MET
3	D	538	ARG
3	D	545	HIS
3	D	715	ASP
3	D	780	ARG
3	D	984	VAL
3	D	1215	SER
5	F	167	TYR
5	F	234	LYS
5	F	292	MET
5	F	306	PHE
5	F	310	PHE
5	F	431	PHE

Sometimes sidechains can be flipped to improve hydrogen bonding and reduce clashes. All (10) such sidechains are listed below:

Mol	Chain	Res	Type
1	B	116	GLN
2	C	524	ASN
2	C	1125	ASN
2	C	1163	HIS
3	D	277	ASN
3	D	477	GLN
3	D	777	HIS
3	D	1218	HIS
4	E	15	ASN
5	F	413	ASN

### 5.3.3 RNA [i](#)

Mol	Chain	Analysed	Backbone Outliers	Pucker Outliers
7	R	9/12 (75%)	0	0

There are no RNA backbone outliers to report.

There are no RNA pucker outliers to report.

#### 5.4 Non-standard residues in protein, DNA, RNA chains [i](#)

There are no non-standard protein/DNA/RNA residues in this entry.

#### 5.5 Carbohydrates [i](#)

There are no oligosaccharides in this entry.

#### 5.6 Ligand geometry [i](#)

Of 1 ligands modelled in this entry, 1 is monoatomic - leaving 0 for Mogul analysis.

There are no bond length outliers.

There are no bond angle outliers.

There are no chirality outliers.

There are no torsion outliers.

There are no ring outliers.

No monomer is involved in short contacts.

#### 5.7 Other polymers [i](#)

There are no such residues in this entry.

#### 5.8 Polymer linkage issues [i](#)

There are no chain breaks in this entry.

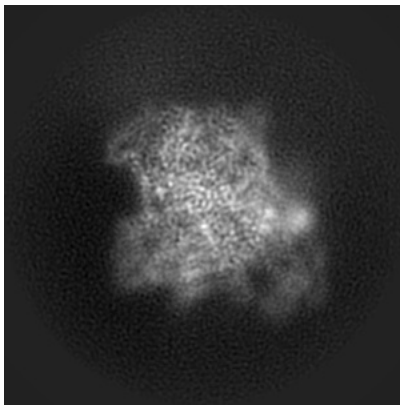
## 6 Map visualisation [i](#)

This section contains visualisations of the EMDB entry EMD-33515. These allow visual inspection of the internal detail of the map and identification of artifacts.

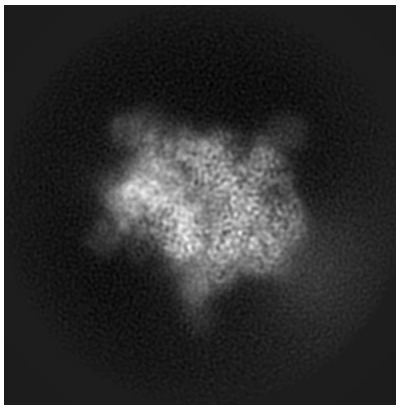
Images derived from a raw map, generated by summing the deposited half-maps, are presented below the corresponding image components of the primary map to allow further visual inspection and comparison with those of the primary map.

### 6.1 Orthogonal projections [i](#)

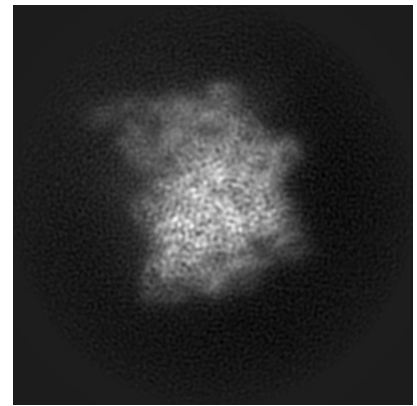
#### 6.1.1 Primary map



X

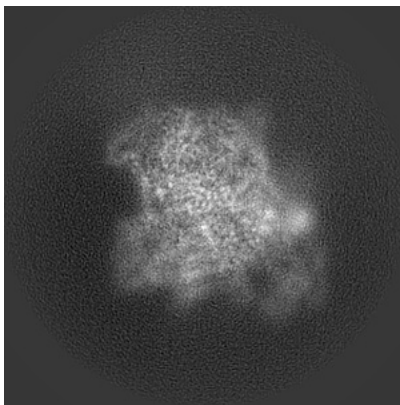


Y

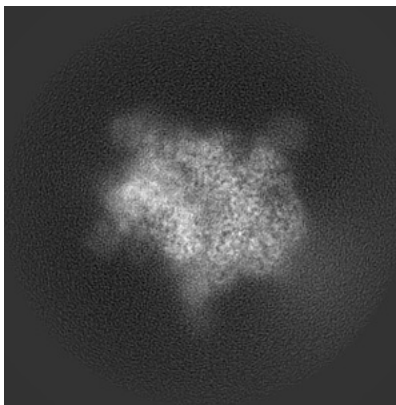


Z

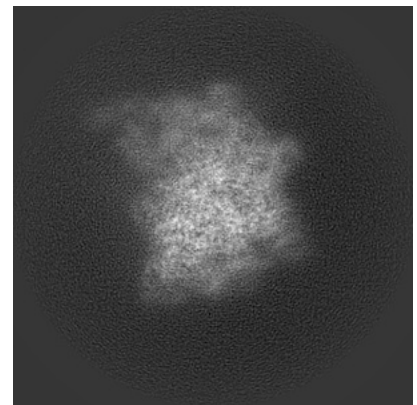
#### 6.1.2 Raw map



X



Y



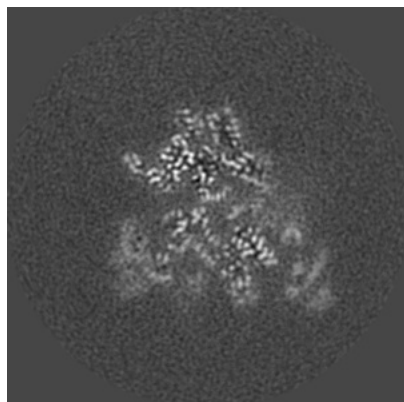
Z

The images above show the map projected in three orthogonal directions.

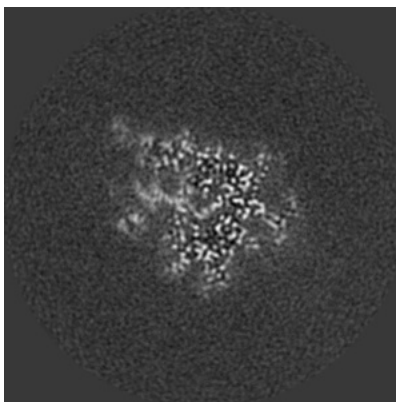


## 6.2 Central slices [i](#)

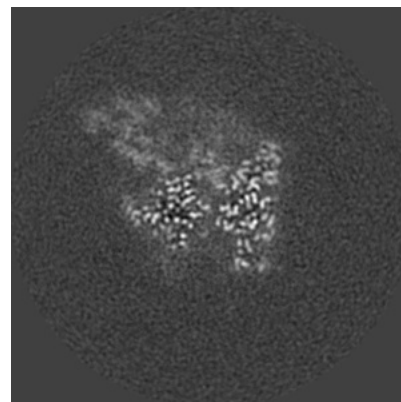
### 6.2.1 Primary map



X Index: 140

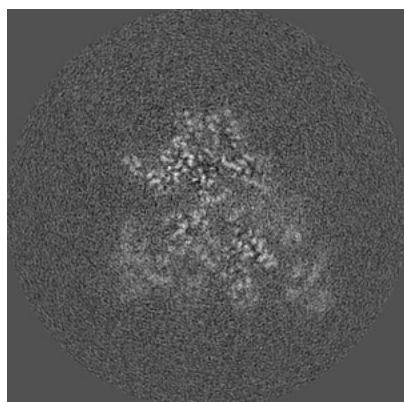


Y Index: 140

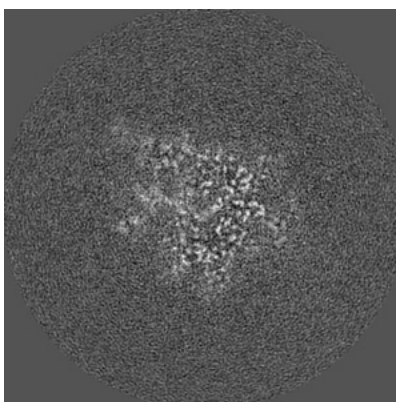


Z Index: 140

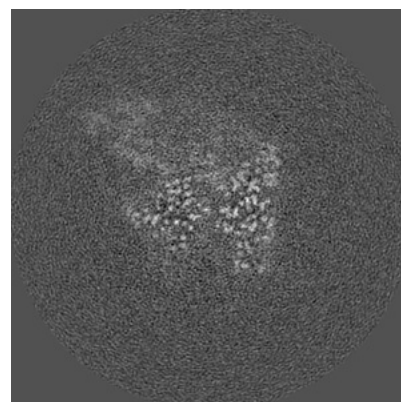
### 6.2.2 Raw map



X Index: 140



Y Index: 140



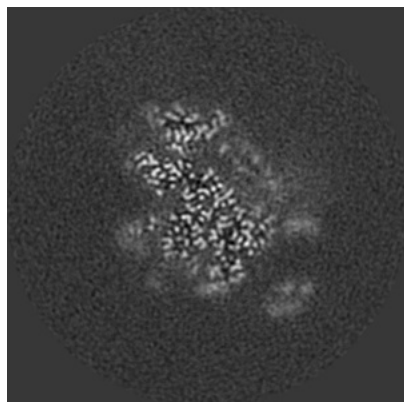
Z Index: 140

The images above show central slices of the map in three orthogonal directions.

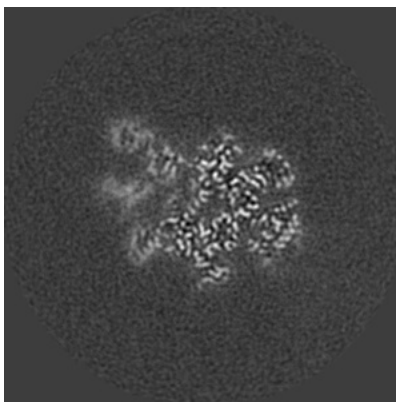


## 6.3 Largest variance slices [i](#)

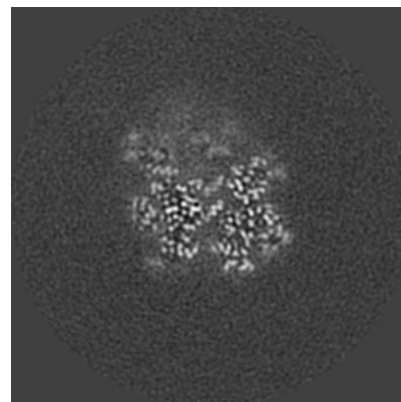
### 6.3.1 Primary map



X Index: 126

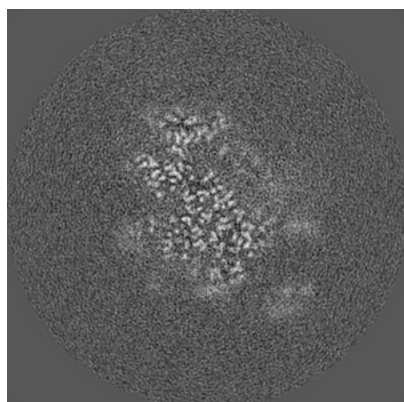


Y Index: 129

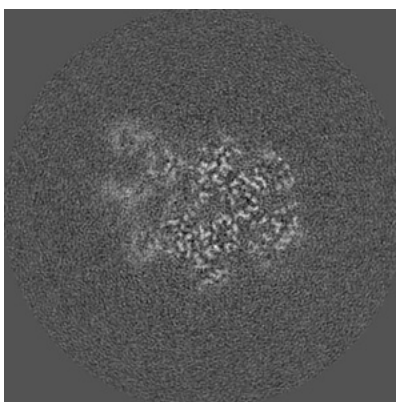


Z Index: 151

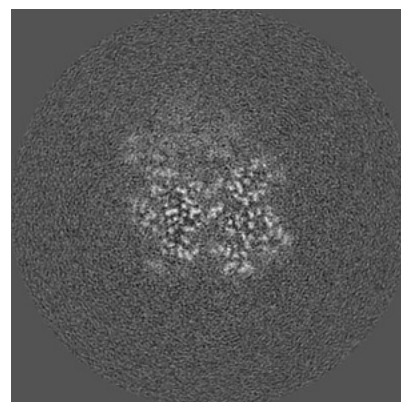
### 6.3.2 Raw map



X Index: 126



Y Index: 129

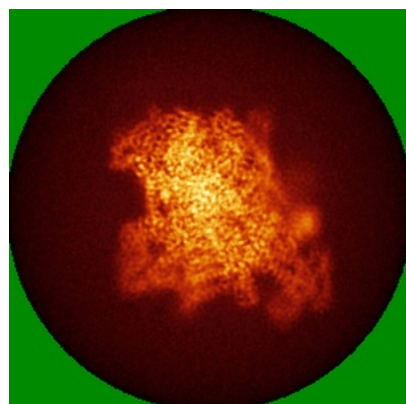


Z Index: 151

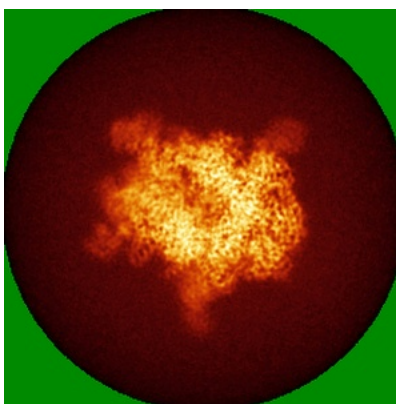
The images above show the largest variance slices of the map in three orthogonal directions.

## 6.4 Orthogonal standard-deviation projections (False-color) [i](#)

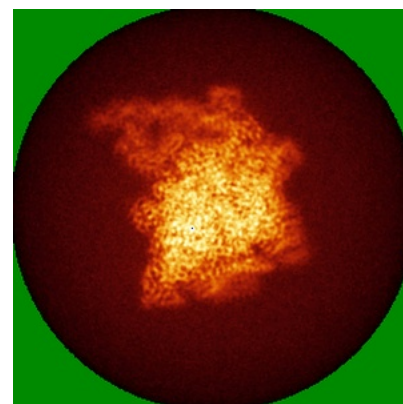
### 6.4.1 Primary map



X

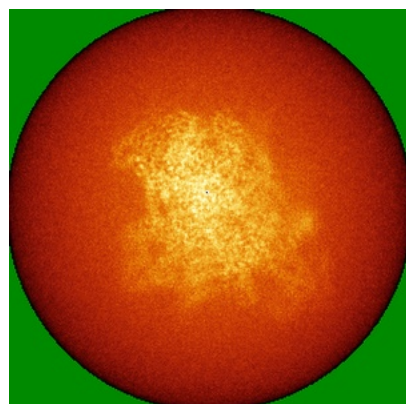


Y

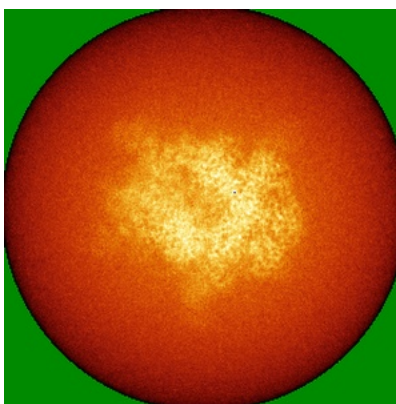


Z

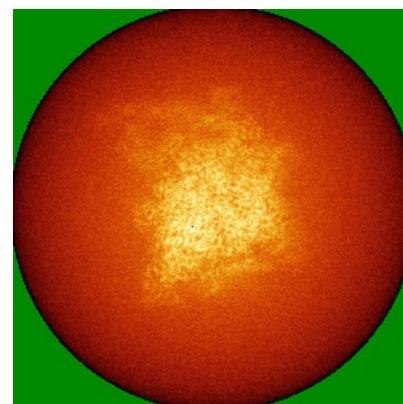
### 6.4.2 Raw map



X



Y



Z

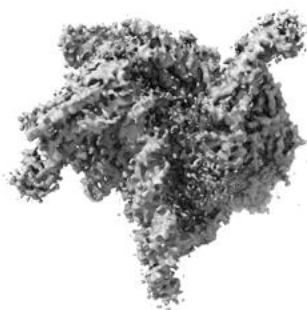
The images above show the map standard deviation projections with false color in three orthogonal directions. Minimum values are shown in green, max in blue, and dark to light orange shades represent small to large values respectively.

## 6.5 Orthogonal surface views [i](#)

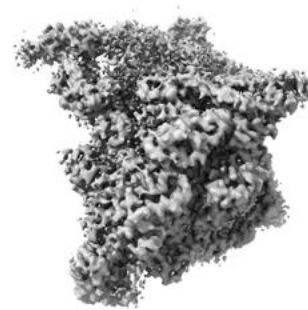
### 6.5.1 Primary map



X



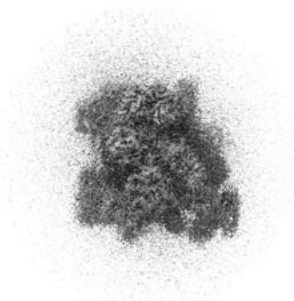
Y



Z

The images above show the 3D surface view of the map at the recommended contour level 0.005. These images, in conjunction with the slice images, may facilitate assessment of whether an appropriate contour level has been provided.

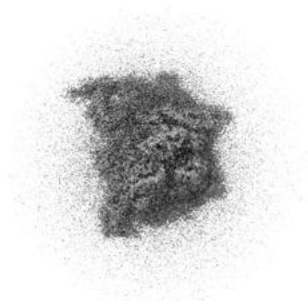
### 6.5.2 Raw map



X



Y



Z

These images show the 3D surface of the raw map. The raw map's contour level was selected so that its surface encloses the same volume as the primary map does at its recommended contour level.

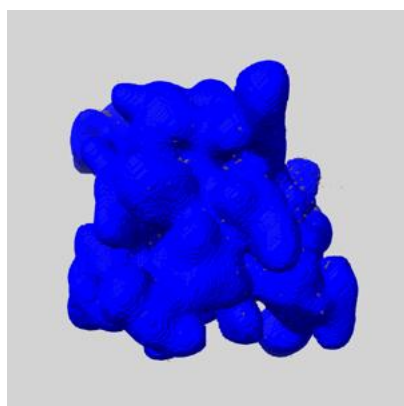
## 6.6 Mask visualisation [i](#)

This section shows the 3D surface view of the primary map at 50% transparency overlaid with the specified mask at 0% transparency

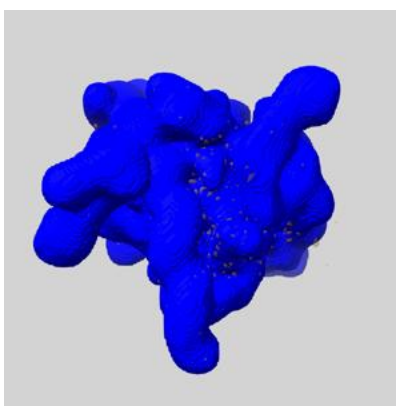
A mask typically either:

- Encompasses the whole structure
- Separates out a domain, a functional unit, a monomer or an area of interest from a larger structure

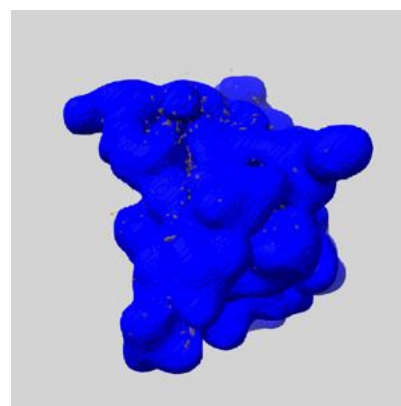
### 6.6.1 emd\_33515\_msk\_1.map [i](#)



X



Y

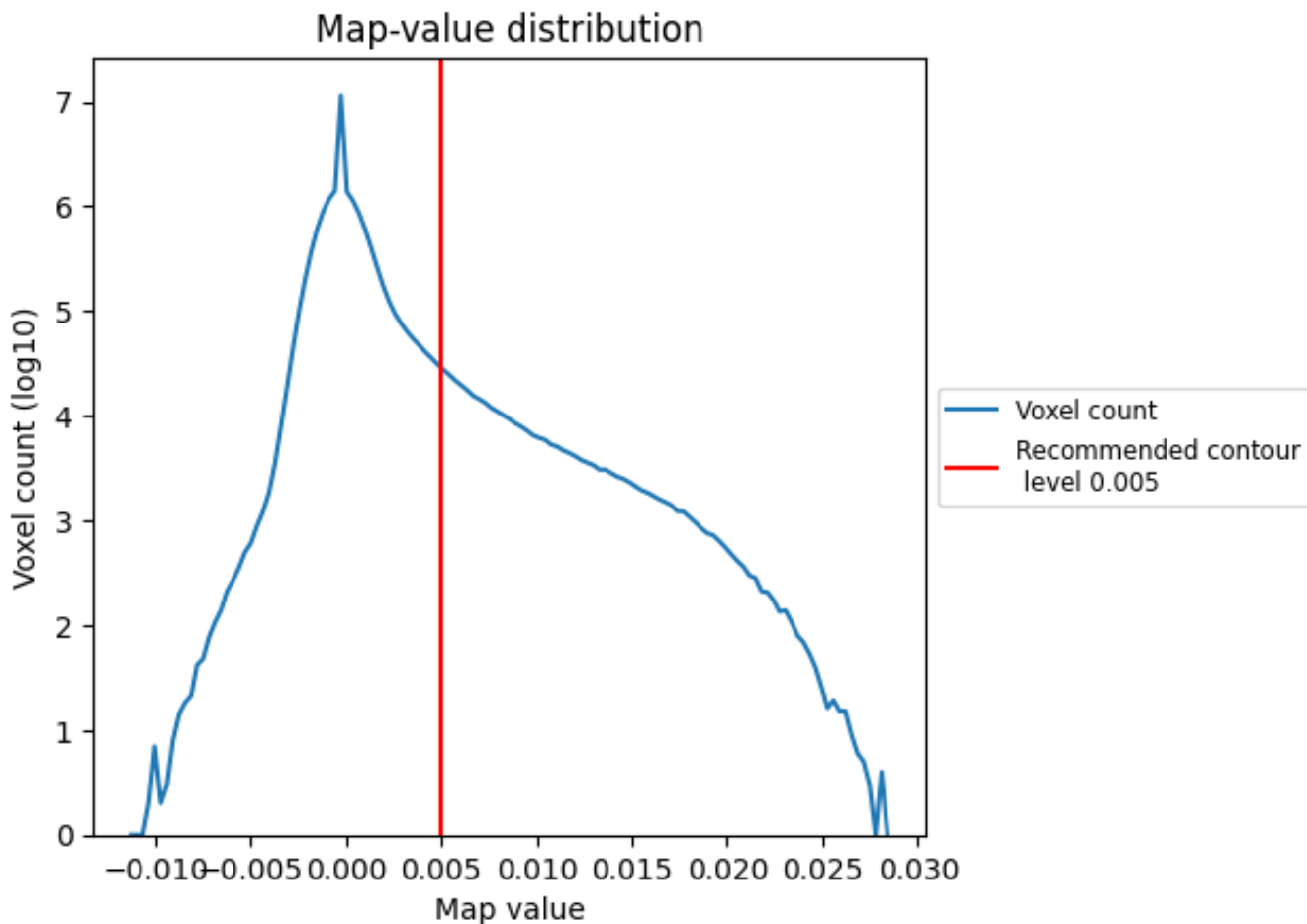


Z

## 7 Map analysis [i](#)

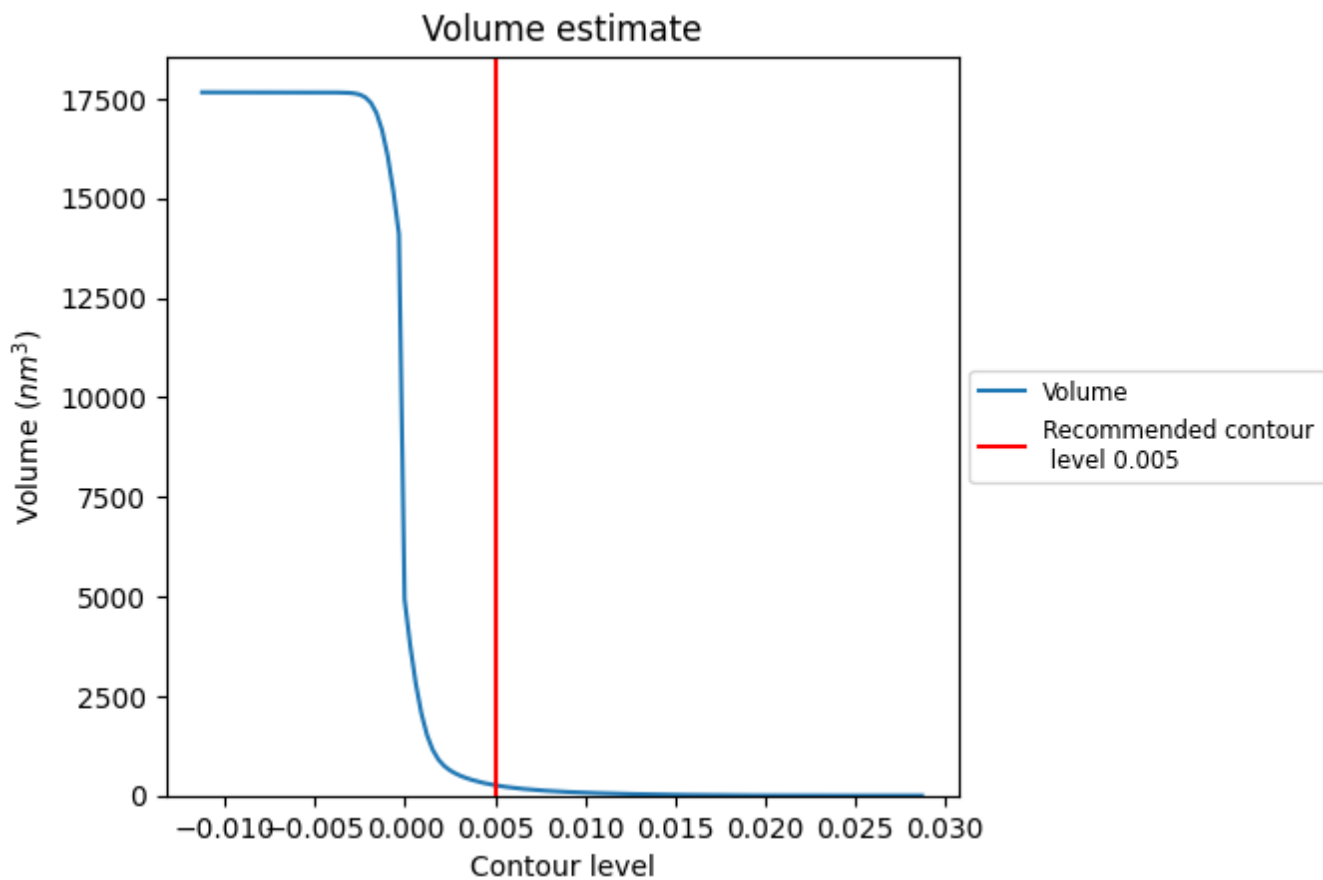
This section contains the results of statistical analysis of the map.

### 7.1 Map-value distribution [i](#)



The map-value distribution is plotted in 128 intervals along the x-axis. The y-axis is logarithmic. A spike in this graph at zero usually indicates that the volume has been masked.

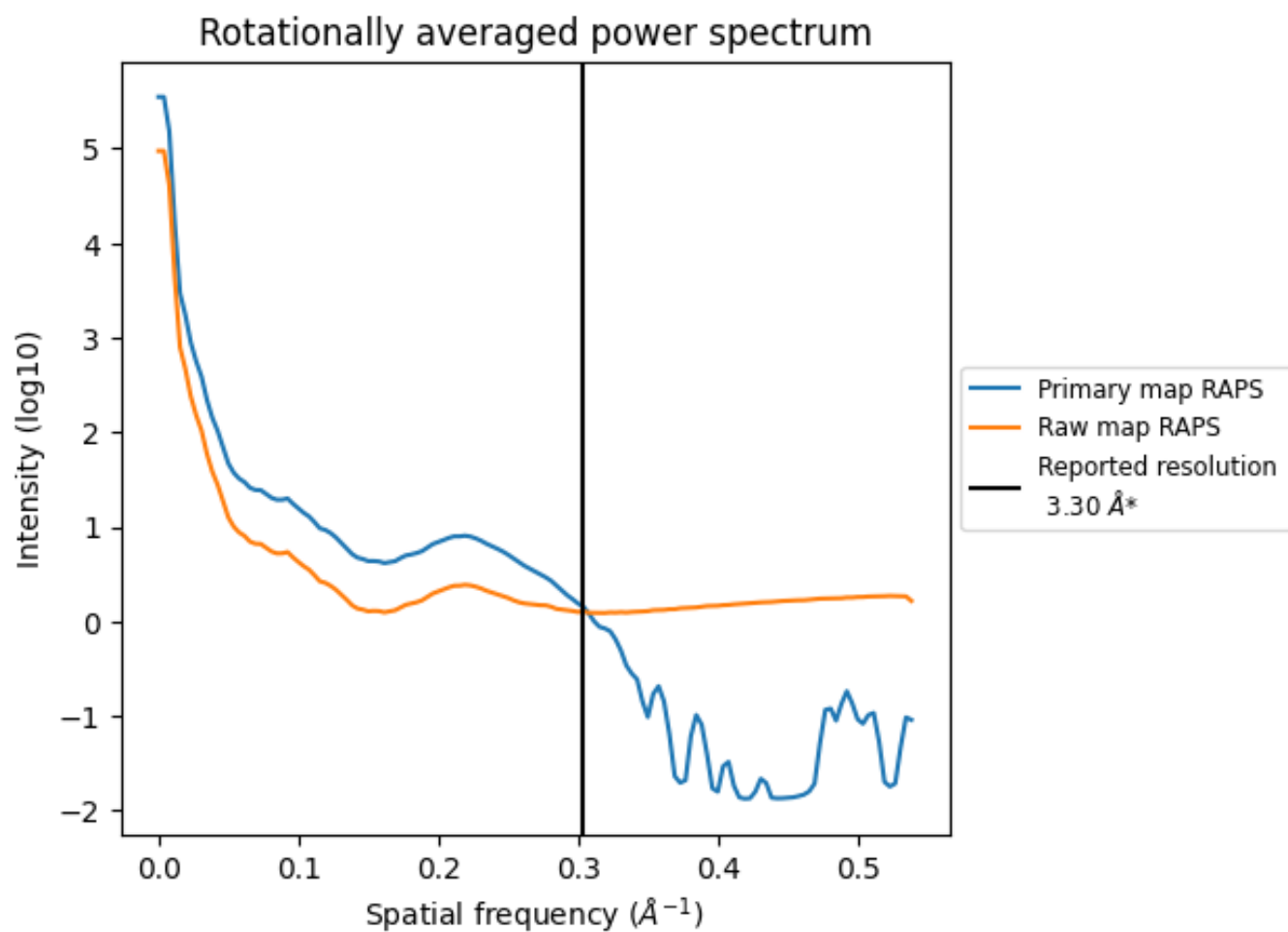
## 7.2 Volume estimate [i](#)



The volume at the recommended contour level is 261  $\text{nm}^3$ ; this corresponds to an approximate mass of 235 kDa.

The volume estimate graph shows how the enclosed volume varies with the contour level. The recommended contour level is shown as a vertical line and the intersection between the line and the curve gives the volume of the enclosed surface at the given level.

### 7.3 Rotationally averaged power spectrum [\(i\)](#)



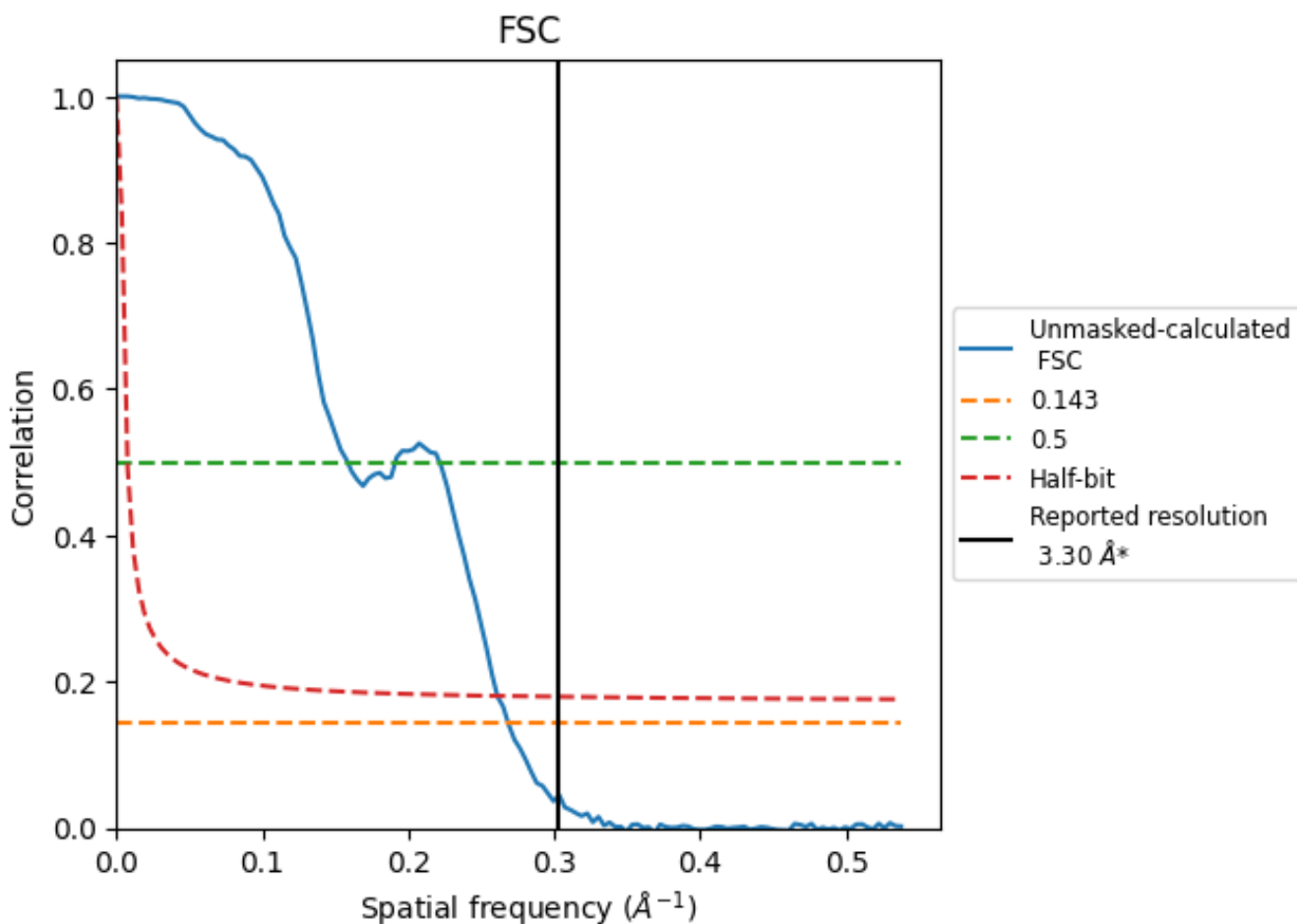
\*Reported resolution corresponds to spatial frequency of 0.303 Å<sup>-1</sup>



## 8 Fourier-Shell correlation [i](#)

Fourier-Shell Correlation (FSC) is the most commonly used method to estimate the resolution of single-particle and subtomogram-averaged maps. The shape of the curve depends on the imposed symmetry, mask and whether or not the two 3D reconstructions used were processed from a common reference. The reported resolution is shown as a black line. A curve is displayed for the half-bit criterion in addition to lines showing the 0.143 gold standard cut-off and 0.5 cut-off.

### 8.1 FSC [i](#)



\*Reported resolution corresponds to spatial frequency of  $0.303 \text{\AA}^{-1}$



## 8.2 Resolution estimates [i](#)

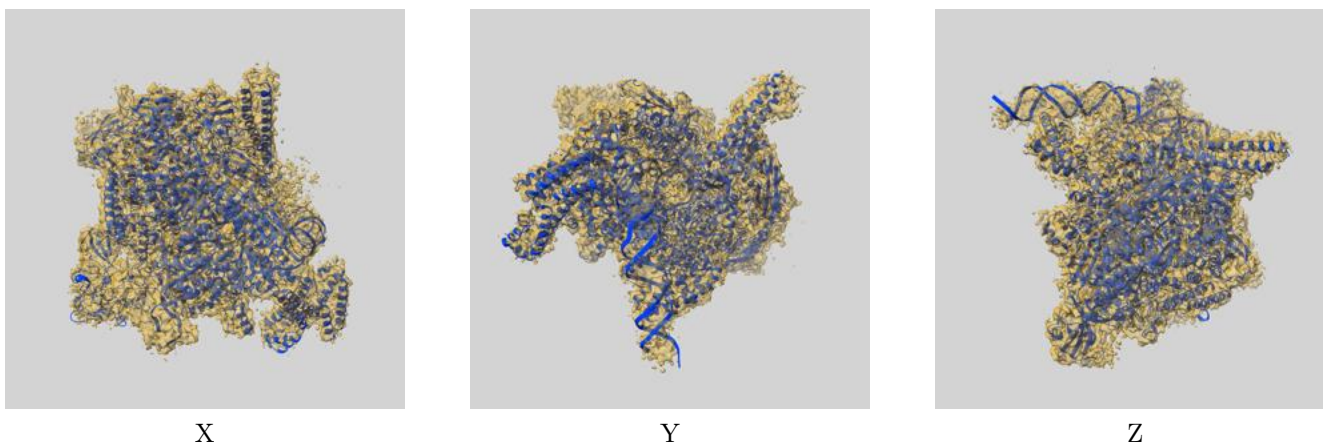
Resolution estimate (Å)	Estimation criterion (FSC cut-off)		
	0.143	0.5	Half-bit
Reported by author	3.30	-	-
Author-provided FSC curve	-	-	-
Unmasked-calculated*	3.72	6.32	3.83

\*Resolution estimate based on FSC curve calculated by comparison of deposited half-maps. The value from deposited half-maps intersecting FSC 0.143 CUT-OFF 3.72 differs from the reported value 3.3 by more than 10 %

## 9 Map-model fit [i](#)

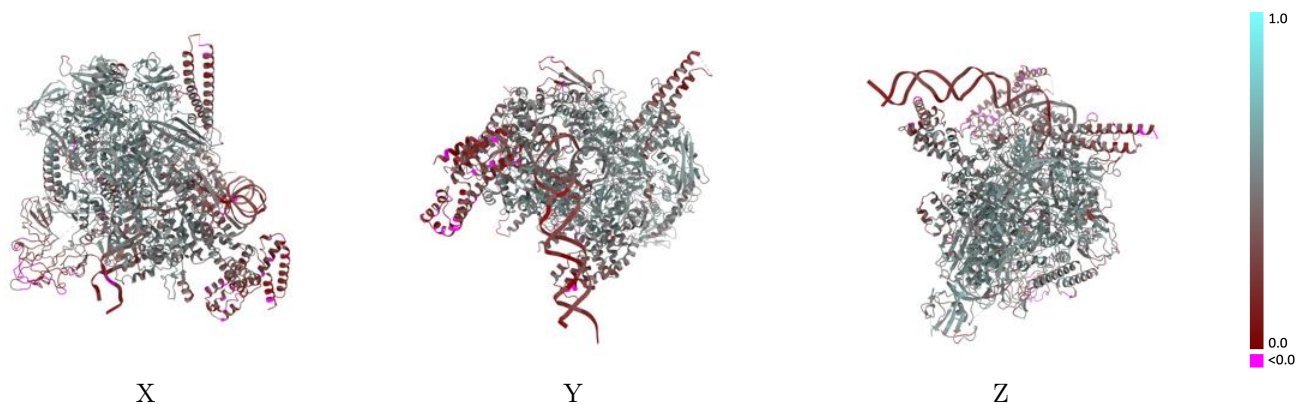
This section contains information regarding the fit between EMDB map EMD-33515 and PDB model 7XYA. Per-residue inclusion information can be found in section 3 on page 6.

### 9.1 Map-model overlay [i](#)



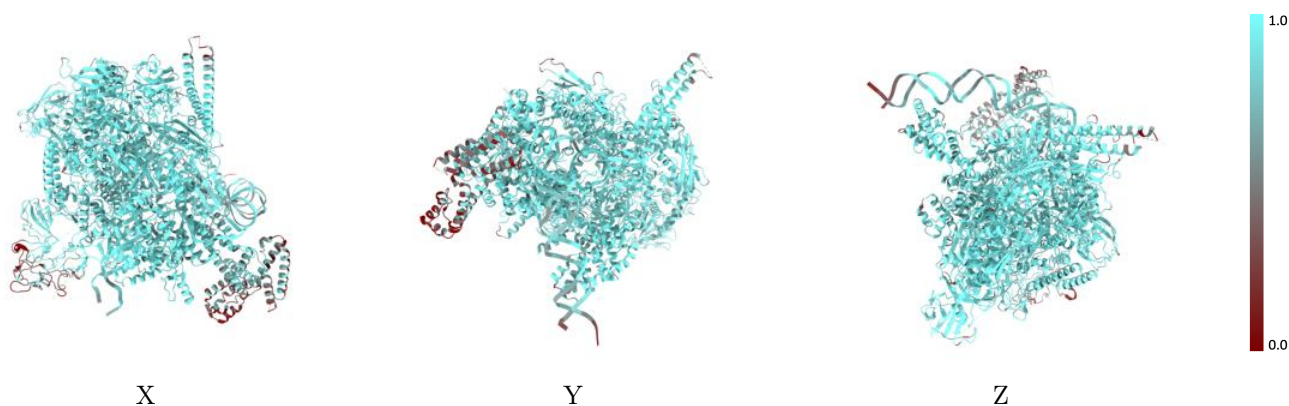
The images above show the 3D surface view of the map at the recommended contour level 0.005 at 50% transparency in yellow overlaid with a ribbon representation of the model coloured in blue. These images allow for the visual assessment of the quality of fit between the atomic model and the map.

## 9.2 Q-score mapped to coordinate model [\(i\)](#)



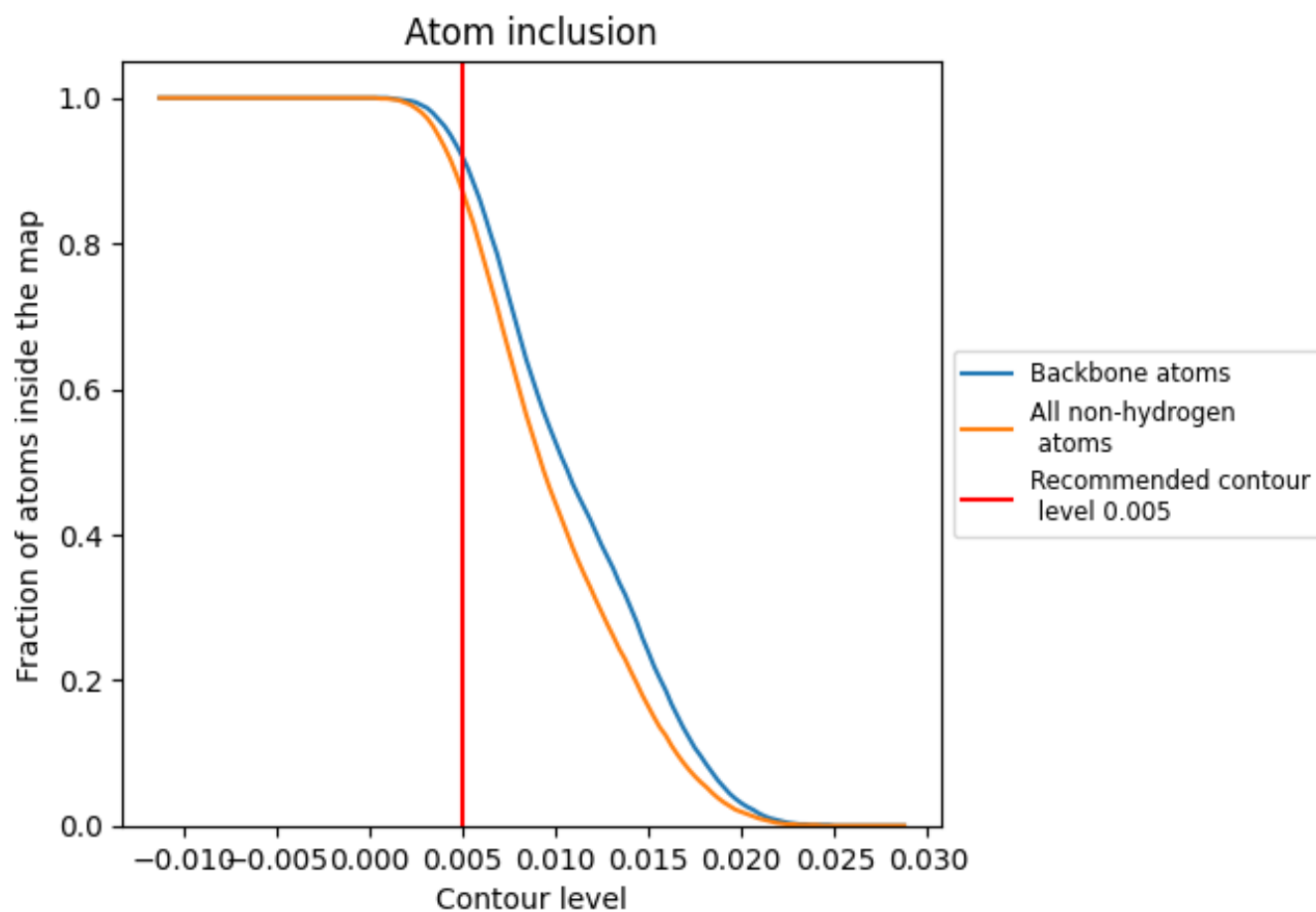
The images above show the model with each residue coloured according to its Q-score. This shows their resolvability in the map with higher Q-score values reflecting better resolvability. Please note: Q-score is calculating the resolvability of atoms, and thus high values are only expected at resolutions at which atoms can be resolved. Low Q-score values may therefore be expected for many entries.

## 9.3 Atom inclusion mapped to coordinate model [\(i\)](#)



The images above show the model with each residue coloured according to its atom inclusion. This shows to what extent they are inside the map at the recommended contour level (0.005).























## 9.4 Atom inclusion [i](#)



At the recommended contour level, 92% of all backbone atoms, 87% of all non-hydrogen atoms, are inside the map.

## 9.5 Map-model fit summary

The table lists the average atom inclusion at the recommended contour level (0.005) and Q-score for the entire model and for each chain.

Chain	Atom inclusion	Q-score
All	 0.8720	 0.4470
A	 0.9220	 0.5230
B	 0.9020	 0.5000
C	 0.9230	 0.4920
D	 0.8950	 0.4750
E	 0.8030	 0.3930
F	 0.6360	 0.3010
G	 0.8810	 0.3920
N	 0.8110	 0.2780
R	 0.9900	 0.4730
T	 0.7940	 0.2750

