



## Full wwPDB EM Validation Report ⓘ

Sep 2, 2024 – 12:15 PM JST

PDB ID : 8Y3M  
EMDB ID : EMD-38889  
Title : Cryo-EM structure of DSR2-DSAD1 complex (cross-linked)  
Authors : Wang, R.W.; Xu, Q.; Wu, Z.X.; Li, J.L.; Shi, Z.B.; Li, F.X.  
Deposited on : 2024-01-29  
Resolution : 3.25 Å (reported)

This is a Full wwPDB EM Validation Report for a publicly released PDB entry.

We welcome your comments at [validation@mail.wwpdb.org](mailto:validation@mail.wwpdb.org)

A user guide is available at

<https://www.wwpdb.org/validation/2017/EMValidationReportHelp>

with specific help available everywhere you see the ⓘ symbol.

The types of validation reports are described at

<http://www.wwpdb.org/validation/2017/FAQs#types>.

---

The following versions of software and data (see [references ⓘ](#)) were used in the production of this report:

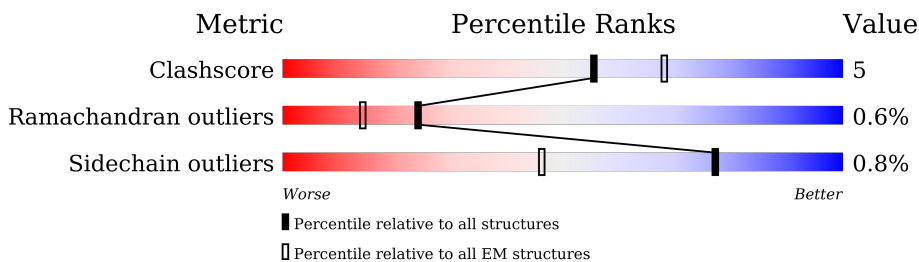
EMDB validation analysis : 0.0.1.dev112  
MolProbity : 4.02b-467  
Percentile statistics : 20231227.v01 (using entries in the PDB archive December 27th 2023)  
MapQ : 1.9.13  
Ideal geometry (proteins) : Engh & Huber (2001)  
Ideal geometry (DNA, RNA) : Parkinson et al. (1996)  
Validation Pipeline (wwPDB-VP) : 2.38.2

# 1 Overall quality at a glance i

The following experimental techniques were used to determine the structure:  
*ELECTRON MICROSCOPY*

The reported resolution of this entry is 3.25 Å.

Percentile scores (ranging between 0-100) for global validation metrics of the entry are shown in the following graphic. The table shows the number of entries on which the scores are based.



Metric	Whole archive (#Entries)	EM structures (#Entries)
Clashscore	210492	15764
Ramachandran outliers	207382	16835
Sidechain outliers	206894	16415

The table below summarises the geometric issues observed across the polymeric chains and their fit to the map. The red, orange, yellow and green segments of the bar indicate the fraction of residues that contain outliers for  $\geq 3$ , 2, 1 and 0 types of geometric quality criteria respectively. A grey segment represents the fraction of residues that are not modelled. The numeric value for each fraction is indicated below the corresponding segment, with a dot representing fractions  $\leq 5\%$ . The upper red bar (where present) indicates the fraction of residues that have poor fit to the EM map (all-atom inclusion  $< 40\%$ ). The numeric value is given above the bar.

Mol	Chain	Length	Quality of chain
1	A	1005	
1	B	1005	
2	C	120	

## 2 Entry composition

There are 2 unique types of molecules in this entry. The entry contains 16793 atoms, of which 0 are hydrogens and 0 are deuteriums.

In the tables below, the AltConf column contains the number of residues with at least one atom in alternate conformation and the Trace column contains the number of residues modelled with at most 2 atoms.

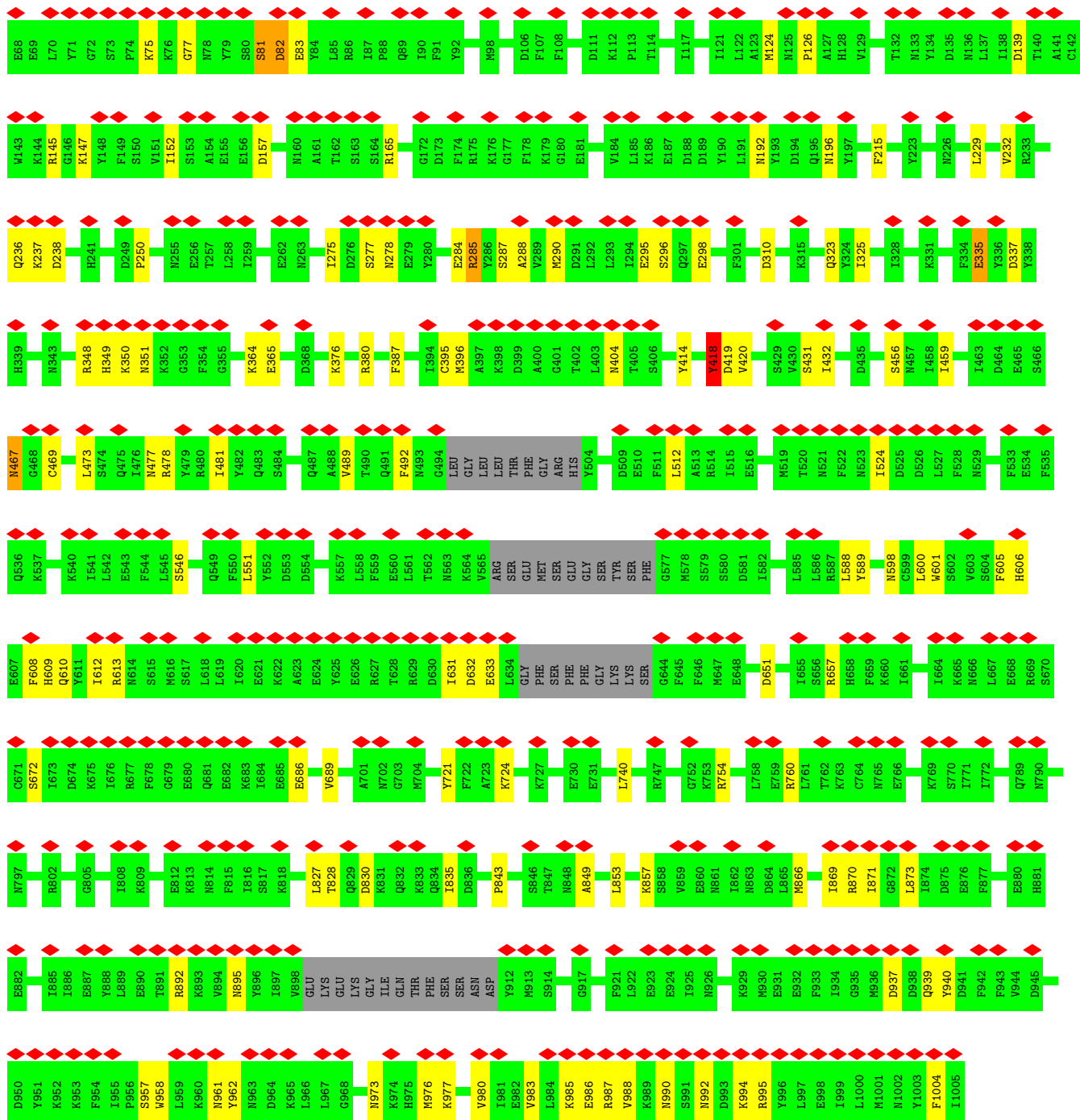
- Molecule 1 is a protein called SIR2-like domain-containing protein.

Mol	Chain	Residues	Atoms					AltConf	Trace
			Total	C	N	O	S		
1	A	957	Total	C	N	O	S	0	0
			7968	5155	1282	1499	32		
1	B	958	Total	C	N	O	S	0	0
			7996	5178	1290	1497	31		

- Molecule 2 is a protein called DSR anti-defence 1.

Mol	Chain	Residues	Atoms					AltConf	Trace
			Total	C	N	O	S		
2	C	102	Total	C	N	O	S	0	0
			829	544	133	150	2		





• Molecule 2: DSR anti-defence 1



## 4 Experimental information

Property	Value	Source
EM reconstruction method	SINGLE PARTICLE	Depositor
Imposed symmetry	POINT, Not provided	
Number of particles used	428814	Depositor
Resolution determination method	FSC 0.143 CUT-OFF	Depositor
CTF correction method	NONE	Depositor
Microscope	TFS KRIOS	Depositor
Voltage (kV)	300	Depositor
Electron dose ( $e^-/\text{\AA}^2$ )	50	Depositor
Minimum defocus (nm)	1000	Depositor
Maximum defocus (nm)	1500	Depositor
Magnification	13000	Depositor
Image detector	GATAN K3 (6k x 4k)	Depositor
Maximum map value	6.052	Depositor
Minimum map value	-2.246	Depositor
Average map value	0.016	Depositor
Map value standard deviation	0.079	Depositor
Recommended contour level	0.7	Depositor
Map size ( $\text{\AA}$ )	430.91998, 430.91998, 430.91998	wwPDB
Map dimensions	400, 400, 400	wwPDB
Map angles ( $^\circ$ )	90.0, 90.0, 90.0	wwPDB
Pixel spacing ( $\text{\AA}$ )	1.0773, 1.0773, 1.0773	Depositor

## 5 Model quality [i](#)

### 5.1 Standard geometry [i](#)

The Z score for a bond length (or angle) is the number of standard deviations the observed value is removed from the expected value. A bond length (or angle) with  $|Z| > 5$  is considered an outlier worth inspection. RMSZ is the root-mean-square of all Z scores of the bond lengths (or angles).

Mol	Chain	Bond lengths		Bond angles	
		RMSZ	# Z  >5	RMSZ	# Z  >5
1	A	0.35	0/8150	0.57	0/10979
1	B	0.35	0/8178	0.57	0/11014
2	C	0.47	0/847	0.74	0/1144
All	All	0.36	0/17175	0.58	0/23137

Chiral center outliers are detected by calculating the chiral volume of a chiral center and verifying if the center is modelled as a planar moiety or with the opposite hand. A planarity outlier is detected by checking planarity of atoms in a peptide group, atoms in a mainchain group or atoms of a sidechain that are expected to be planar.

Mol	Chain	#Chirality outliers	#Planarity outliers
1	A	0	7
1	B	0	10
All	All	0	17

There are no bond length outliers.

There are no bond angle outliers.

There are no chirality outliers.

All (17) planarity outliers are listed below:

Mol	Chain	Res	Type	Group
1	A	238	ASP	Peptide
1	A	290	MET	Peptide
1	A	335	GLU	Peptide
1	A	364	LYS	Peptide
1	A	418	TYR	Peptide
1	A	869	ILE	Peptide
1	A	873	LEU	Peptide
1	B	238	ASP	Peptide
1	B	290	MET	Peptide
1	B	335	GLU	Peptide

*Continued on next page...*

*Continued from previous page...*

Mol	Chain	Res	Type	Group
1	B	364	LYS	Peptide
1	B	418	TYR	Peptide
1	B	631	ILE	Peptide
1	B	632	ASP	Peptide
1	B	633	GLU	Peptide
1	B	869	ILE	Peptide
1	B	873	LEU	Peptide

## 5.2 Too-close contacts [\(i\)](#)

In the following table, the Non-H and H(model) columns list the number of non-hydrogen atoms and hydrogen atoms in the chain respectively. The H(added) column lists the number of hydrogen atoms added and optimized by MolProbity. The Clashes column lists the number of clashes within the asymmetric unit, whereas Symm-Clashes lists symmetry-related clashes.

Mol	Chain	Non-H	H(model)	H(added)	Clashes	Symm-Clashes
1	A	7968	0	7798	72	0
1	B	7996	0	7845	81	0
2	C	829	0	820	17	0
All	All	16793	0	16463	159	0

The all-atom clashscore is defined as the number of clashes found per 1000 atoms (including hydrogen atoms). The all-atom clashscore for this structure is 5.

All (159) close contacts within the same asymmetric unit are listed below, sorted by their clash magnitude.

Atom-1	Atom-2	Interatomic distance (Å)	Clash overlap (Å)
1:A:976:MET:O	1:A:980:VAL:HB	1.87	0.75
1:B:976:MET:O	1:B:980:VAL:HB	1.87	0.75
1:B:939:GLN:HE22	2:C:61:VAL:HG23	1.61	0.66
1:A:988:VAL:HG12	1:B:988:VAL:HG12	1.79	0.65
1:A:1000:LEU:HG	1:B:985:LYS:HE3	1.79	0.64
1:A:250:PRO:HA	1:A:285:ARG:HH12	1.63	0.64
1:B:467:ASN:ND2	1:B:469:CYS:SG	2.71	0.63
1:B:11:TYR:O	1:B:15:LEU:HB2	1.99	0.63
1:B:250:PRO:HA	1:B:285:ARG:HH12	1.63	0.62
1:A:467:ASN:ND2	1:A:469:CYS:SG	2.71	0.62
1:A:395:CYS:SG	1:A:396:MET:N	2.74	0.60
1:A:957:SER:OG	1:A:958:TRP:N	2.33	0.60
1:B:610:GLN:OE1	1:B:613:ARG:NH1	2.35	0.60

*Continued on next page...*



*Continued from previous page...*

Atom-1	Atom-2	Interatomic distance (Å)	Clash overlap (Å)
1:A:610:GLN:OE1	1:A:613:ARG:NH1	2.35	0.60
1:B:395:CYS:SG	1:B:396:MET:N	2.74	0.59
2:C:31:ILE:HG22	2:C:83:ILE:HG22	1.84	0.59
2:C:44:PHE:HB3	2:C:64:ILE:HD11	1.85	0.59
1:A:939:GLN:NE2	1:A:962:TYR:OH	2.36	0.59
1:B:418:TYR:O	1:B:420:VAL:N	2.36	0.58
1:A:418:TYR:O	1:A:420:VAL:N	2.36	0.58
1:B:10:ARG:O	1:B:14:LYS:HB3	2.04	0.58
2:C:16:TYR:OH	2:C:21:ASN:ND2	2.37	0.58
1:B:939:GLN:NE2	1:B:962:TYR:OH	2.36	0.57
1:A:721:TYR:O	1:A:760:ARG:NH1	2.37	0.57
1:B:721:TYR:O	1:B:760:ARG:NH1	2.37	0.57
1:A:827:LEU:HD21	1:A:835:ILE:HG12	1.86	0.56
1:B:827:LEU:HD21	1:B:835:ILE:HG12	1.86	0.56
1:B:10:ARG:O	1:B:14:LYS:CB	2.54	0.56
1:B:995:ARG:NE	2:C:51:TYR:OH	2.35	0.56
1:A:192:ASN:O	1:A:196:ASN:ND2	2.38	0.56
1:B:192:ASN:O	1:B:196:ASN:ND2	2.38	0.56
2:C:44:PHE:H	2:C:114:LYS:HD3	1.70	0.55
1:A:724:LYS:HE2	1:A:760:ARG:HH21	1.71	0.55
1:B:866:MET:O	1:B:870:ARG:NE	2.39	0.55
1:B:724:LYS:HE2	1:B:760:ARG:HH21	1.71	0.55
1:A:1005:ILE:HB	1:B:985:LYS:HZ2	1.72	0.54
2:C:92:SER:OG	2:C:93:LYS:N	2.41	0.54
1:B:606:HIS:HA	1:B:609:HIS:HD2	1.72	0.54
1:A:866:MET:O	1:A:870:ARG:NE	2.39	0.54
1:A:606:HIS:HA	1:A:609:HIS:HD2	1.72	0.54
1:A:284:GLU:HA	1:A:287:SER:HB2	1.91	0.53
1:B:284:GLU:HA	1:B:287:SER:HB2	1.91	0.53
1:B:524:ILE:HG13	1:B:546:SER:HB2	1.91	0.52
1:A:477:ASN:OD1	1:A:601:TRP:N	2.38	0.52
1:A:524:ILE:HG13	1:A:546:SER:HB2	1.91	0.52
1:B:983:VAL:HG13	1:B:987:ARG:HH11	1.73	0.52
1:A:310:ASP:OD1	1:A:380:ARG:NH1	2.42	0.52
1:B:477:ASN:OD1	1:B:601:TRP:N	2.38	0.52
1:A:348:ARG:NH2	1:A:351:ASN:O	2.41	0.51
1:B:277:SER:OG	1:B:278:ASN:N	2.43	0.51
1:A:456:SER:HA	1:A:459:ILE:HG12	1.93	0.51
1:B:489:VAL:HG11	1:B:512:LEU:HD11	1.93	0.51
2:C:33:LEU:HA	2:C:80:ASN:HB2	1.93	0.51
1:B:937:ASP:HB3	1:B:940:TYR:HB3	1.93	0.51

*Continued on next page...*

*Continued from previous page...*

Atom-1	Atom-2	Interatomic distance (Å)	Clash overlap (Å)
1:B:310:ASP:OD1	1:B:380:ARG:NH1	2.42	0.51
1:A:489:VAL:HG11	1:A:512:LEU:HD11	1.93	0.51
1:A:277:SER:OG	1:A:278:ASN:N	2.43	0.50
1:A:686:GLU:HA	1:A:689:VAL:HG22	1.94	0.50
1:B:456:SER:HA	1:B:459:ILE:HG12	1.93	0.50
1:B:348:ARG:NH2	1:B:351:ASN:O	2.41	0.50
1:B:686:GLU:HA	1:B:689:VAL:HG22	1.94	0.50
1:A:145:ARG:HD3	1:A:147:LYS:HD2	1.94	0.49
2:C:32:VAL:HG12	2:C:82:LYS:H	1.77	0.49
1:A:588:LEU:HD11	1:A:612:ILE:HG12	1.94	0.49
1:B:145:ARG:HD3	1:B:147:LYS:HD2	1.94	0.49
1:B:957:SER:OG	1:B:958:TRP:N	2.33	0.49
1:A:937:ASP:HB3	1:A:940:TYR:HB3	1.93	0.49
1:B:588:LEU:HD11	1:B:612:ILE:HG12	1.94	0.49
1:A:589:TYR:OH	1:A:651:ASP:OD1	2.31	0.48
1:B:284:GLU:O	1:B:288:ALA:HB2	2.13	0.48
1:B:958:TRP:CD1	2:C:61:VAL:HG21	2.48	0.48
1:B:589:TYR:OH	1:B:651:ASP:OD1	2.31	0.48
1:A:284:GLU:O	1:A:288:ALA:HB2	2.13	0.47
1:A:295:GLU:HB2	1:A:298:GLU:HB2	1.96	0.47
1:B:295:GLU:HB2	1:B:298:GLU:HB2	1.96	0.47
1:A:325:ILE:HD12	1:A:387:PHE:HZ	1.80	0.47
1:B:892:ARG:HA	1:B:895:ASN:HD22	1.79	0.47
1:B:335:GLU:O	1:B:337:ASP:N	2.40	0.47
1:B:849:ALA:O	1:B:853:LEU:HB2	2.15	0.47
2:C:32:VAL:HA	2:C:38:GLU:HA	1.97	0.47
1:A:414:TYR:O	1:A:657:ARG:NH2	2.40	0.47
1:A:473:LEU:HD13	1:A:600:LEU:HD21	1.97	0.47
1:A:892:ARG:HA	1:A:895:ASN:HD22	1.79	0.47
1:A:849:ALA:O	1:A:853:LEU:HB2	2.15	0.46
1:B:325:ILE:HD12	1:B:387:PHE:HZ	1.80	0.46
1:B:473:LEU:HD13	1:B:600:LEU:HD21	1.96	0.46
1:B:348:ARG:HE	1:B:351:ASN:HB3	1.80	0.46
1:A:348:ARG:HE	1:A:351:ASN:HB3	1.80	0.46
2:C:30:ASP:HB2	2:C:85:LYS:HB3	1.98	0.46
1:A:828:THR:OG1	1:A:830:ASP:OD1	2.30	0.46
1:B:236:GLN:HB3	1:B:237:LYS:H	1.58	0.46
1:B:870:ARG:O	2:C:54:ASN:ND2	2.49	0.46
1:A:58:GLN:OE1	1:A:60:TRP:NE1	2.38	0.45
1:B:139:ASP:N	1:B:139:ASP:OD1	2.49	0.45
1:B:849:ALA:O	1:B:853:LEU:CB	2.64	0.45

*Continued on next page...*

*Continued from previous page...*

Atom-1	Atom-2	Interatomic distance (Å)	Clash overlap (Å)
1:A:977:LYS:NZ	1:A:1004:PHE:O	2.50	0.45
1:B:45:PHE:HB3	1:B:215:PHE:HD1	1.82	0.45
1:B:977:LYS:NZ	1:B:1004:PHE:O	2.50	0.45
1:A:335:GLU:O	1:A:337:ASP:N	2.41	0.45
1:B:672:SER:HB3	1:B:994:LYS:HE3	1.99	0.45
1:A:431:SER:OG	1:A:432:ILE:N	2.50	0.45
1:A:849:ALA:O	1:A:853:LEU:CB	2.64	0.45
1:B:828:THR:OG1	1:B:830:ASP:OD1	2.30	0.45
1:A:45:PHE:HB3	1:A:215:PHE:HD1	1.82	0.45
1:B:75:LYS:NZ	1:B:77:GLY:O	2.41	0.44
1:B:835:ILE:HG22	1:B:857:LYS:HD2	1.99	0.44
1:B:323:GLN:H	1:B:598:ASN:HD21	1.66	0.44
1:B:431:SER:OG	1:B:432:ILE:N	2.50	0.44
1:A:672:SER:HB3	1:A:994:LYS:HE3	1.98	0.44
1:A:37:SER:OG	1:A:124:MET:O	2.36	0.44
1:A:323:GLN:H	1:A:598:ASN:HD21	1.66	0.44
1:A:835:ILE:HG22	1:A:857:LYS:HD2	1.99	0.44
1:A:236:GLN:HB3	1:A:237:LYS:H	1.58	0.44
1:A:229:LEU:HA	1:A:232:VAL:HG12	2.00	0.43
1:A:81:SER:OG	1:A:82:ASP:N	2.50	0.43
1:A:139:ASP:N	1:A:139:ASP:OD1	2.49	0.43
1:B:229:LEU:HA	1:B:232:VAL:HG12	2.00	0.43
1:B:349:HIS:CD2	1:B:350:LYS:HG3	2.54	0.43
1:A:551:LEU:HD11	1:A:608:PHE:HD1	1.83	0.43
1:B:740:LEU:O	1:B:754:ARG:NH2	2.52	0.43
1:B:937:ASP:HA	2:C:108:SER:HA	2.01	0.43
1:A:152:ILE:HG23	1:A:157:ASP:HB2	2.01	0.43
1:B:152:ILE:HG23	1:B:157:ASP:HB2	2.01	0.43
1:B:724:LYS:HD3	1:B:760:ARG:HE	1.84	0.42
1:A:38:ARG:NH2	1:A:296:SER:O	2.39	0.42
1:A:349:HIS:CD2	1:A:350:LYS:HG3	2.54	0.42
1:A:724:LYS:HD3	1:A:760:ARG:HE	1.84	0.42
1:B:81:SER:OG	1:B:82:ASP:N	2.50	0.42
1:B:551:LEU:HD11	1:B:608:PHE:HD1	1.83	0.42
1:B:58:GLN:OE1	1:B:60:TRP:NE1	2.38	0.42
1:B:275:ILE:HD11	1:B:285:ARG:HG3	2.02	0.42
1:B:843:PRO:HD3	1:B:871:ILE:HB	2.02	0.42
1:A:275:ILE:HD11	1:A:285:ARG:HG3	2.02	0.42
1:B:6:LEU:O	1:B:10:ARG:N	2.52	0.42
1:B:961:ASN:OD1	2:C:50:PRO:HA	2.20	0.41
2:C:49:ASN:HA	2:C:119:LEU:HB2	2.01	0.41

*Continued on next page...*

Continued from previous page...

Atom-1	Atom-2	Interatomic distance (Å)	Clash overlap (Å)
1:A:323:GLN:H	1:A:598:ASN:ND2	2.18	0.41
1:A:997:LEU:HD21	1:B:986:GLU:HG2	2.02	0.41
1:A:843:PRO:HD3	1:A:871:ILE:HB	2.02	0.41
1:A:740:LEU:O	1:A:754:ARG:NH2	2.52	0.41
1:A:27:VAL:HA	1:A:30:ILE:HD12	2.03	0.41
1:A:101:ASP:OD1	1:A:180:GLY:N	2.50	0.41
1:A:605:PHE:CZ	1:A:608:PHE:HB2	2.56	0.41
1:A:955:ILE:HD13	1:A:955:ILE:HA	1.92	0.41
1:A:1005:ILE:HB	1:B:985:LYS:NZ	2.34	0.41
1:B:37:SER:OG	1:B:124:MET:O	2.36	0.41
1:B:38:ARG:NH2	1:B:296:SER:O	2.39	0.41
1:B:414:TYR:O	1:B:657:ARG:NH2	2.40	0.41
1:A:374:SER:OG	1:A:375:LYS:N	2.53	0.41
1:A:958:TRP:HA	1:A:961:ASN:HD22	1.86	0.41
1:B:605:PHE:CZ	1:B:608:PHE:HB2	2.56	0.40
2:C:48:PHE:HB3	2:C:118:TYR:HA	2.02	0.40
1:B:126:PRO:O	1:B:165:ARG:NH2	2.42	0.40
1:B:478:ARG:HA	1:B:481:ILE:HG22	2.04	0.40
1:B:27:VAL:HA	1:B:30:ILE:HD12	2.03	0.40
1:B:81:SER:O	1:B:83:GLU:N	2.54	0.40
1:A:81:SER:O	1:A:83:GLU:N	2.54	0.40
1:A:281:ASP:O	1:A:285:ARG:NE	2.55	0.40
1:B:489:VAL:HA	1:B:492:PHE:HB2	2.03	0.40

There are no symmetry-related clashes.

## 5.3 Torsion angles [i](#)

### 5.3.1 Protein backbone [i](#)

In the following table, the Percentiles column shows the percent Ramachandran outliers of the chain as a percentile score with respect to all PDB entries followed by that with respect to all EM entries.

The Analysed column shows the number of residues for which the backbone conformation was analysed, and the total number of residues.

Mol	Chain	Analysed	Favoured	Allowed	Outliers	Percentiles
1	A	949/1005 (94%)	848 (89%)	96 (10%)	5 (0%)	25 56
1	B	948/1005 (94%)	843 (89%)	100 (10%)	5 (0%)	25 56

Continued on next page...

Continued from previous page...

Mol	Chain	Analysed	Favoured	Allowed	Outliers	Percentiles	
2	C	94/120 (78%)	67 (71%)	25 (27%)	2 (2%)	5	26
All	All	1991/2130 (94%)	1758 (88%)	221 (11%)	12 (1%)	24	52

All (12) Ramachandran outliers are listed below:

Mol	Chain	Res	Type
1	A	82	ASP
1	A	419	ASP
1	B	82	ASP
1	B	419	ASP
1	A	81	SER
1	A	365	GLU
1	B	81	SER
1	B	365	GLU
2	C	92	SER
2	C	94	ASP
1	A	418	TYR
1	B	418	TYR

### 5.3.2 Protein sidechains [i](#)

In the following table, the Percentiles column shows the percent sidechain outliers of the chain as a percentile score with respect to all PDB entries followed by that with respect to all EM entries.

The Analysed column shows the number of residues for which the sidechain conformation was analysed, and the total number of residues.

Mol	Chain	Analysed	Rotameric	Outliers	Percentiles	
1	A	879/923 (95%)	872 (99%)	7 (1%)	79	86
1	B	881/923 (95%)	874 (99%)	7 (1%)	79	86
2	C	94/113 (83%)	93 (99%)	1 (1%)	70	81
All	All	1854/1959 (95%)	1839 (99%)	15 (1%)	77	86

All (15) residues with a non-rotameric sidechain are listed below:

Mol	Chain	Res	Type
1	A	285	ARG
1	A	376	LYS
1	A	404	ASN

Continued on next page...

*Continued from previous page...*

Mol	Chain	Res	Type
1	A	467	ASN
1	A	973	ASN
1	A	990	ASN
1	A	992	ASN
1	B	285	ARG
1	B	376	LYS
1	B	404	ASN
1	B	467	ASN
1	B	973	ASN
1	B	990	ASN
1	B	992	ASN
2	C	21	ASN

Sometimes sidechains can be flipped to improve hydrogen bonding and reduce clashes. All (37) such sidechains are listed below:

Mol	Chain	Res	Type
1	A	195	GLN
1	A	351	ASN
1	A	404	ASN
1	A	457	ASN
1	A	467	ASN
1	A	563	ASN
1	A	591	ASN
1	A	598	ASN
1	A	609	HIS
1	A	658	HIS
1	A	881	HIS
1	A	895	ASN
1	A	939	GLN
1	A	961	ASN
1	A	973	ASN
1	A	978	HIS
1	A	990	ASN
1	A	992	ASN
1	B	195	GLN
1	B	351	ASN
1	B	404	ASN
1	B	457	ASN
1	B	467	ASN
1	B	591	ASN
1	B	598	ASN
1	B	609	HIS

*Continued on next page...*

*Continued from previous page...*

Mol	Chain	Res	Type
1	B	658	HIS
1	B	881	HIS
1	B	895	ASN
1	B	939	GLN
1	B	973	ASN
1	B	978	HIS
1	B	990	ASN
1	B	992	ASN
2	C	17	HIS
2	C	21	ASN
2	C	88	HIS

### 5.3.3 RNA [i](#)

There are no RNA molecules in this entry.

### 5.4 Non-standard residues in protein, DNA, RNA chains [i](#)

There are no non-standard protein/DNA/RNA residues in this entry.

### 5.5 Carbohydrates [i](#)

There are no oligosaccharides in this entry.

### 5.6 Ligand geometry [i](#)

There are no ligands in this entry.

### 5.7 Other polymers [i](#)

There are no such residues in this entry.

### 5.8 Polymer linkage issues [i](#)

There are no chain breaks in this entry.

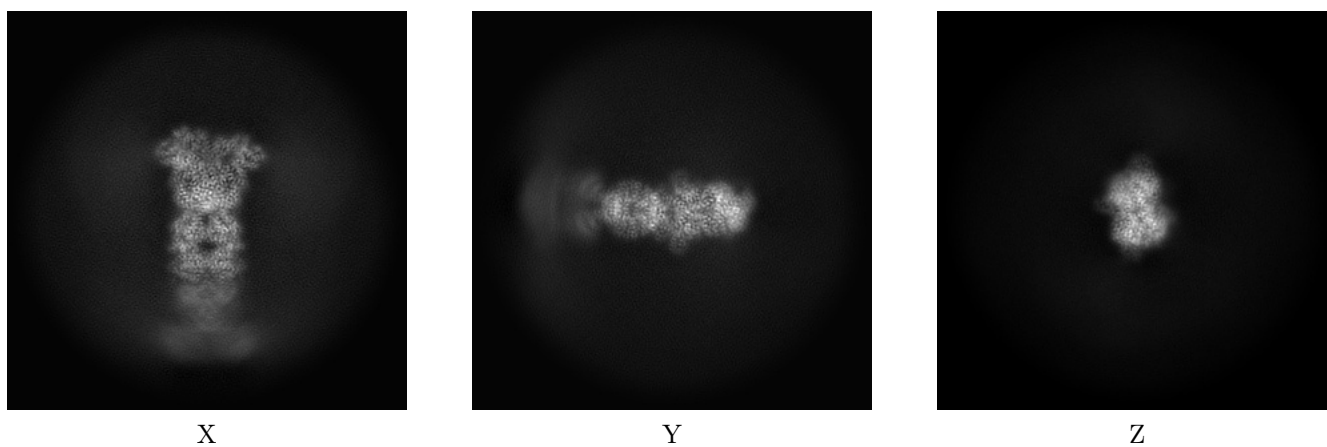
## 6 Map visualisation [i](#)

This section contains visualisations of the EMDB entry EMD-38889. These allow visual inspection of the internal detail of the map and identification of artifacts.

No raw map or half-maps were deposited for this entry and therefore no images, graphs, etc. pertaining to the raw map can be shown.

### 6.1 Orthogonal projections [i](#)

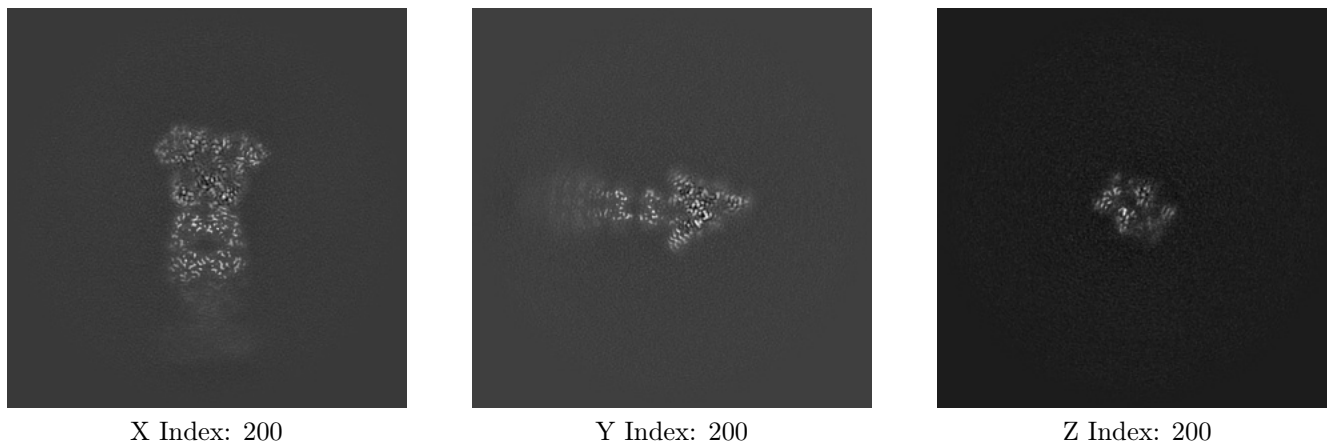
#### 6.1.1 Primary map



The images above show the map projected in three orthogonal directions.

### 6.2 Central slices [i](#)

#### 6.2.1 Primary map





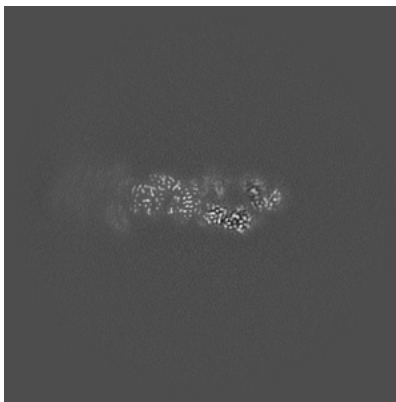
The images above show central slices of the map in three orthogonal directions.

## 6.3 Largest variance slices [i](#)

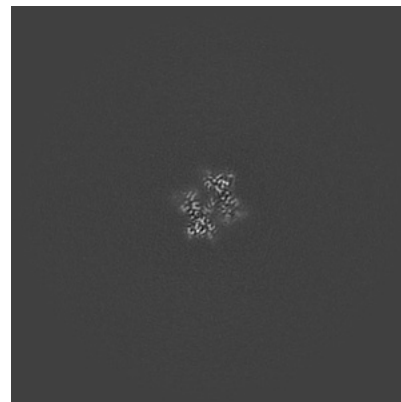
### 6.3.1 Primary map



X Index: 193



Y Index: 185

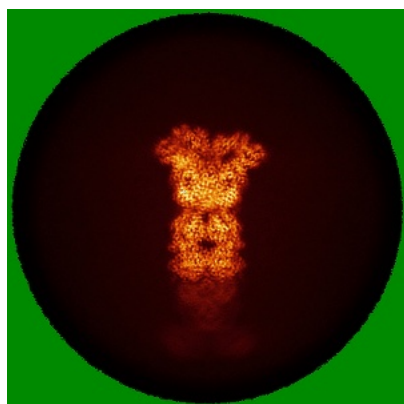


Z Index: 216

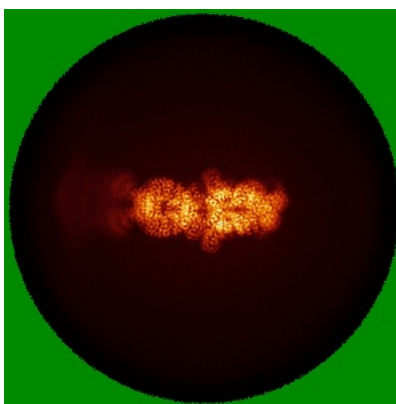
The images above show the largest variance slices of the map in three orthogonal directions.

## 6.4 Orthogonal standard-deviation projections (False-color) [i](#)

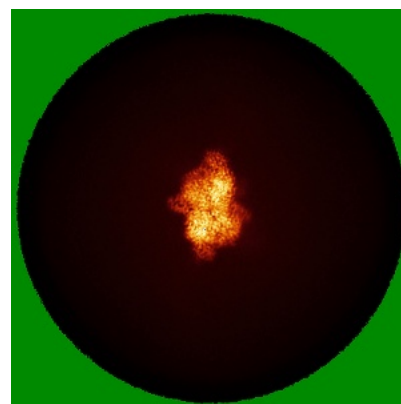
### 6.4.1 Primary map



X



Y



Z

The images above show the map standard deviation projections with false color in three orthogonal directions. Minimum values are shown in green, max in blue, and dark to light orange shades represent small to large values respectively.

## 6.5 Orthogonal surface views [i](#)

### 6.5.1 Primary map



The images above show the 3D surface view of the map at the recommended contour level 0.7. These images, in conjunction with the slice images, may facilitate assessment of whether an appropriate contour level has been provided.

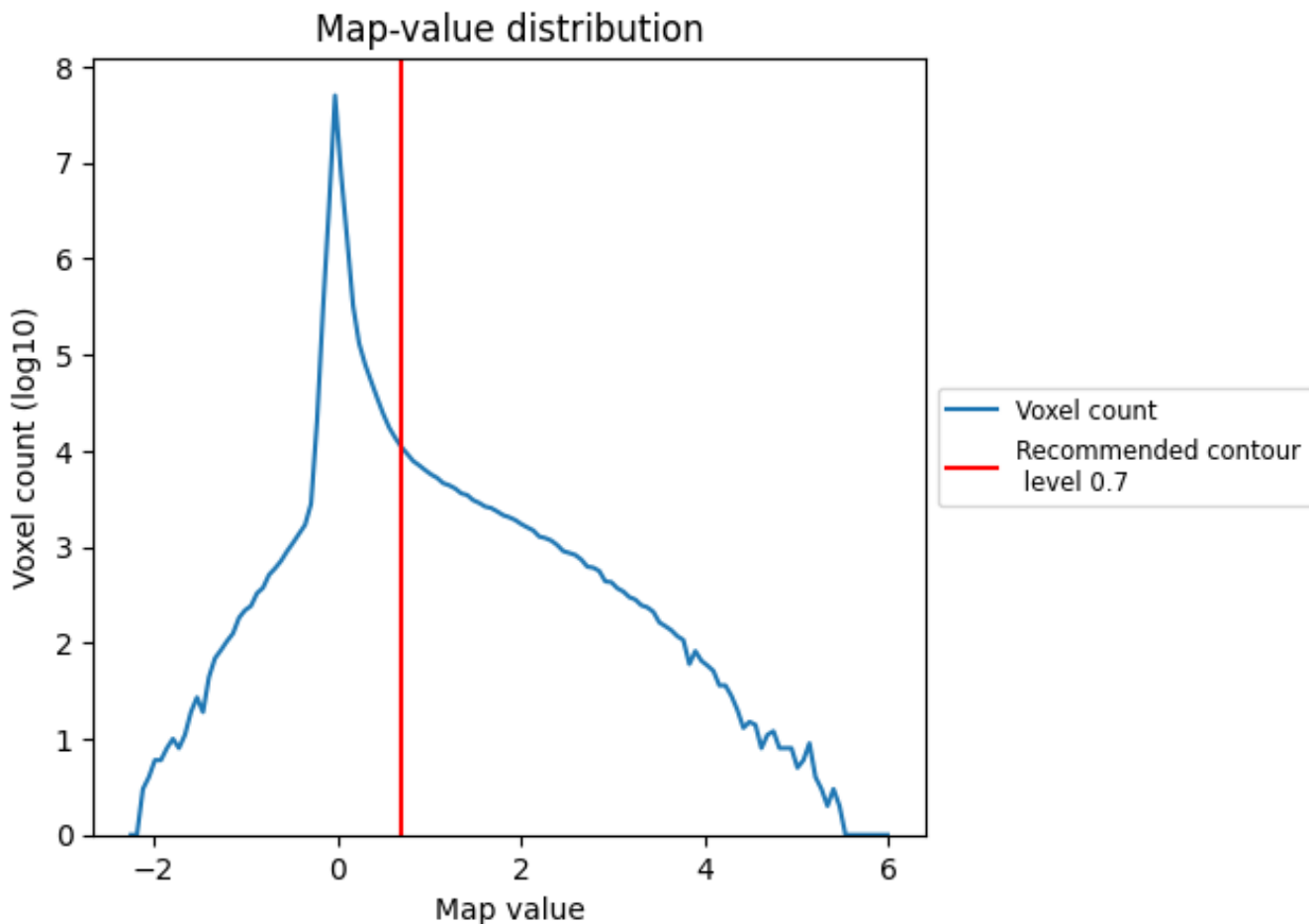
## 6.6 Mask visualisation [i](#)

This section was not generated. No masks/segmentation were deposited.

## 7 Map analysis [i](#)

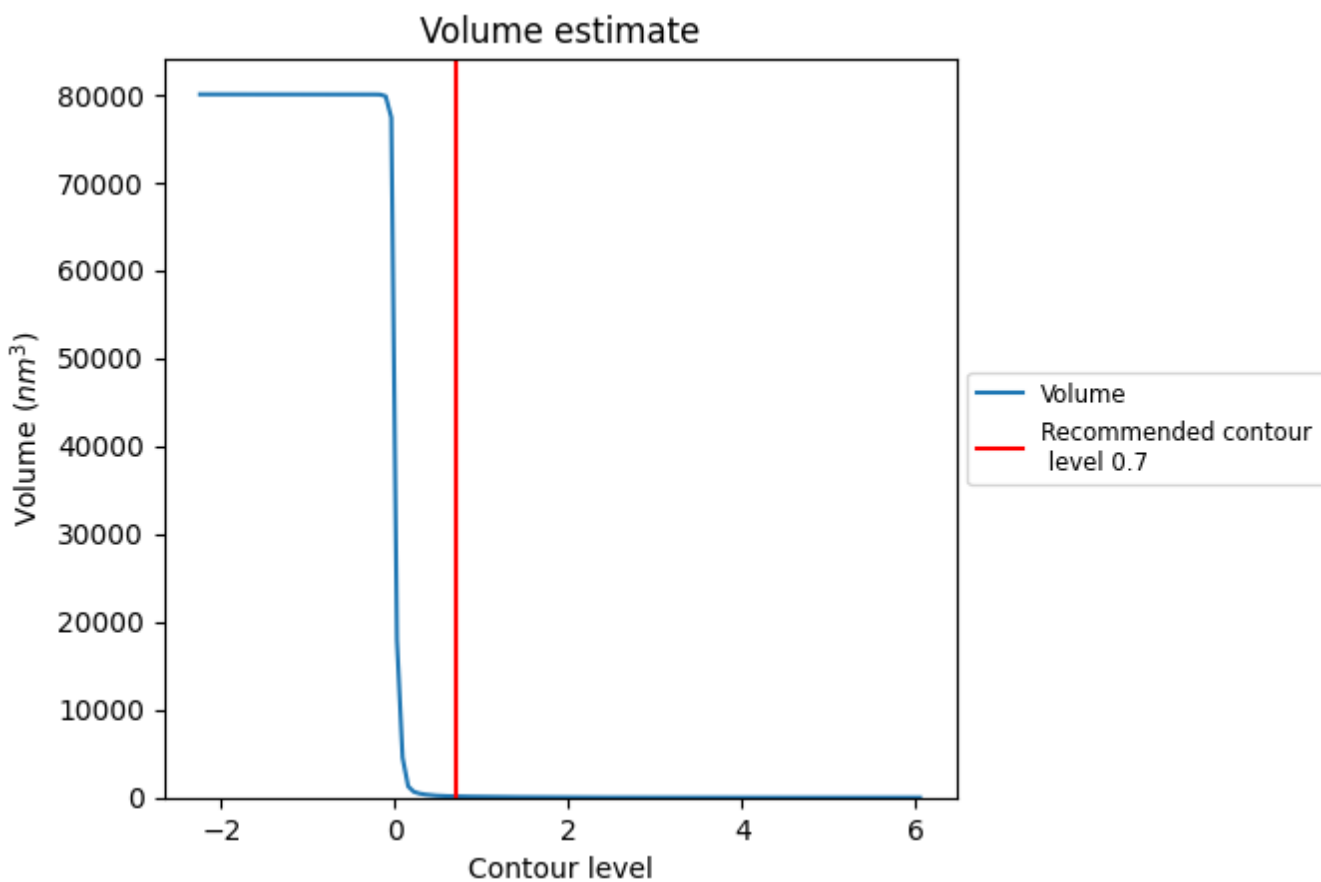
This section contains the results of statistical analysis of the map.

### 7.1 Map-value distribution [i](#)



The map-value distribution is plotted in 128 intervals along the x-axis. The y-axis is logarithmic. A spike in this graph at zero usually indicates that the volume has been masked.

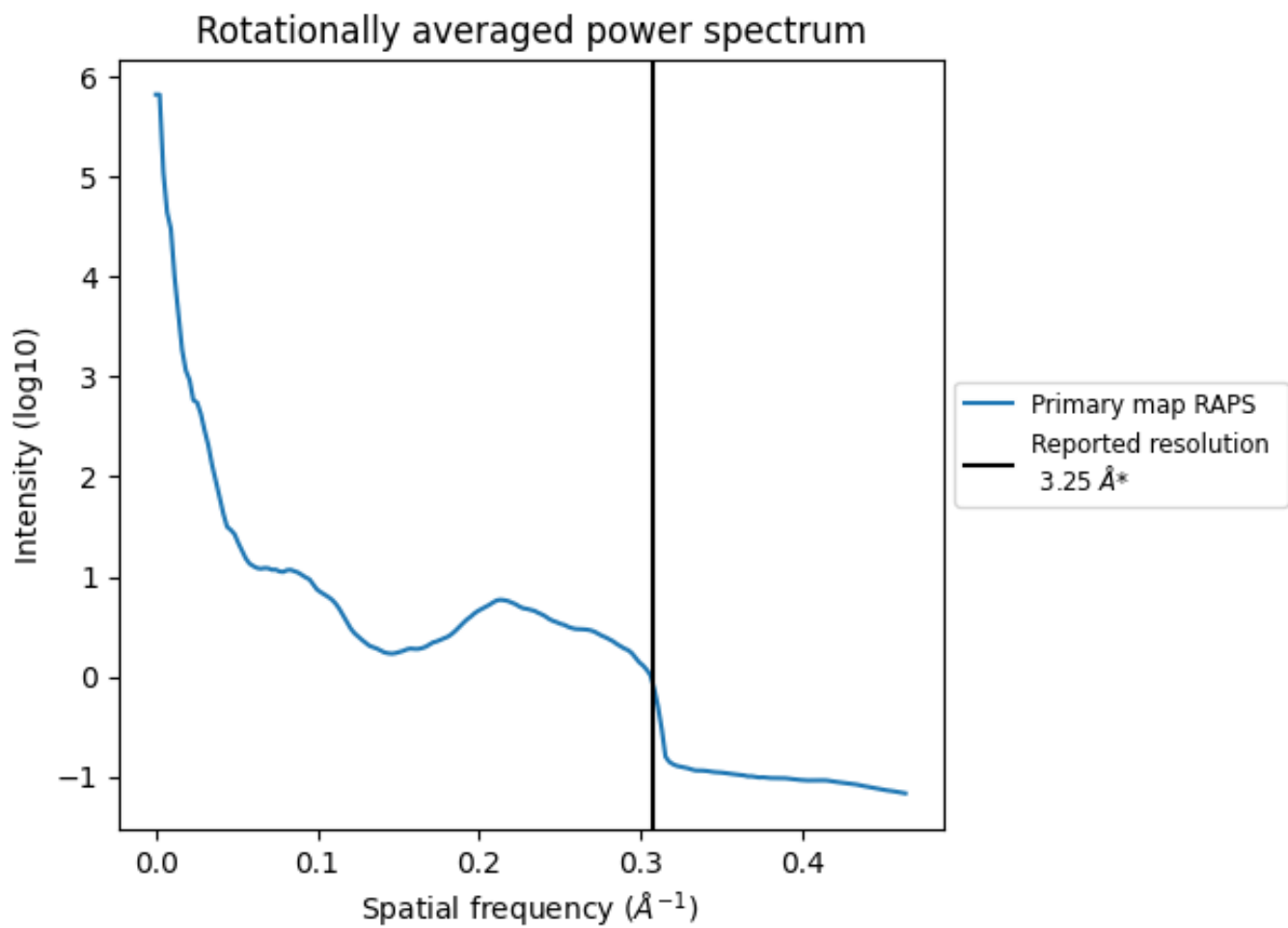
## 7.2 Volume estimate [i](#)



The volume at the recommended contour level is 137 nm<sup>3</sup>; this corresponds to an approximate mass of 124 kDa.

The volume estimate graph shows how the enclosed volume varies with the contour level. The recommended contour level is shown as a vertical line and the intersection between the line and the curve gives the volume of the enclosed surface at the given level.

### 7.3 Rotationally averaged power spectrum i



\*Reported resolution corresponds to spatial frequency of 0.308 Å<sup>-1</sup>

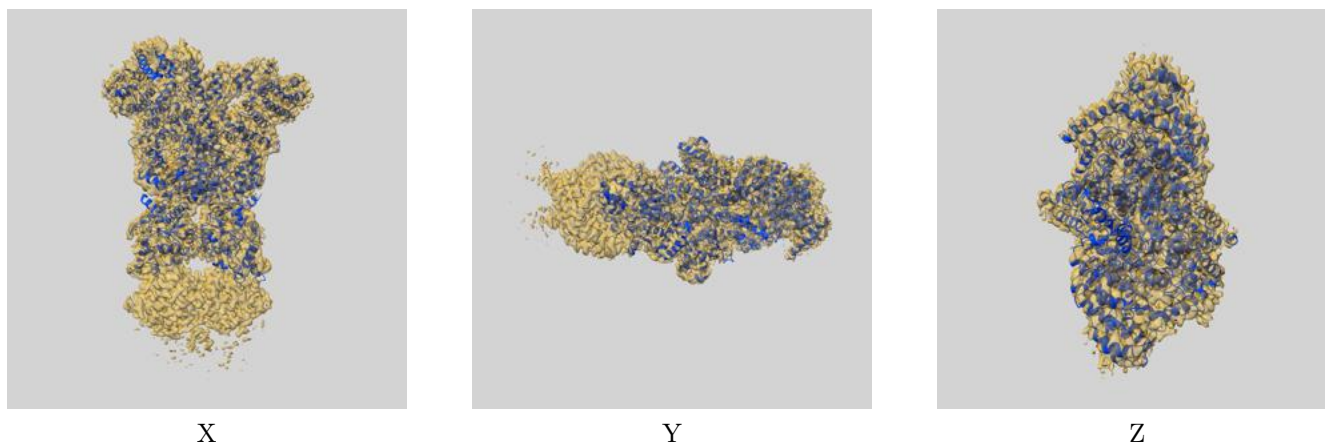
## 8 Fourier-Shell correlation

This section was not generated. No FSC curve or half-maps provided.

## 9 Map-model fit [i](#)

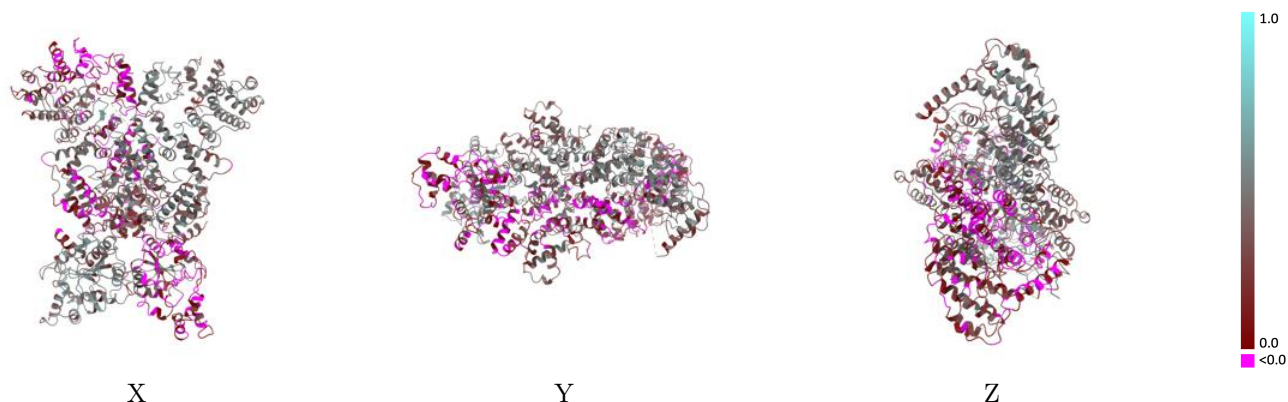
This section contains information regarding the fit between EMDB map EMD-38889 and PDB model 8Y3M. Per-residue inclusion information can be found in section 3 on page 4.

### 9.1 Map-model overlay [i](#)



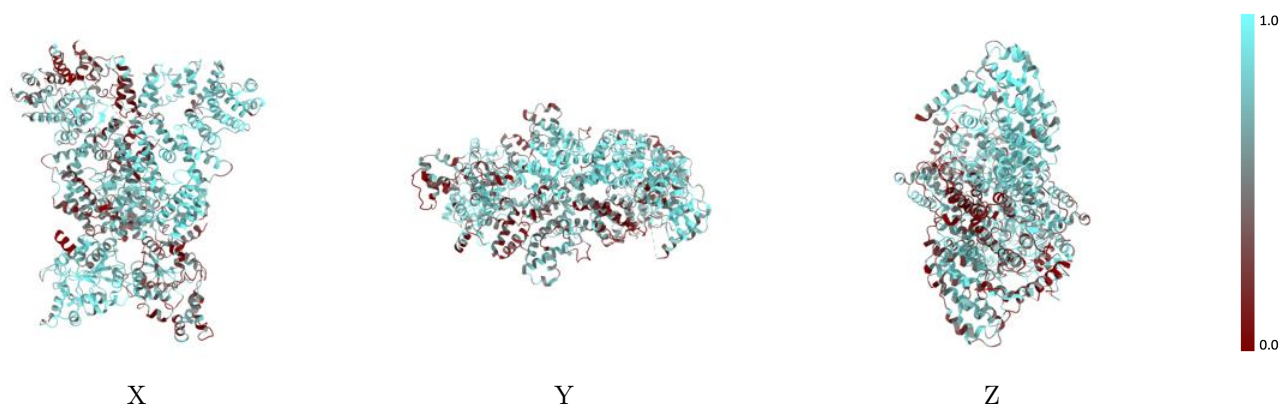
The images above show the 3D surface view of the map at the recommended contour level 0.7 at 50% transparency in yellow overlaid with a ribbon representation of the model coloured in blue. These images allow for the visual assessment of the quality of fit between the atomic model and the map.

## 9.2 Q-score mapped to coordinate model [i](#)



The images above show the model with each residue coloured according to its Q-score. This shows their resolvability in the map with higher Q-score values reflecting better resolvability. Please note: Q-score is calculating the resolvability of atoms, and thus high values are only expected at resolutions at which atoms can be resolved. Low Q-score values may therefore be expected for many entries.

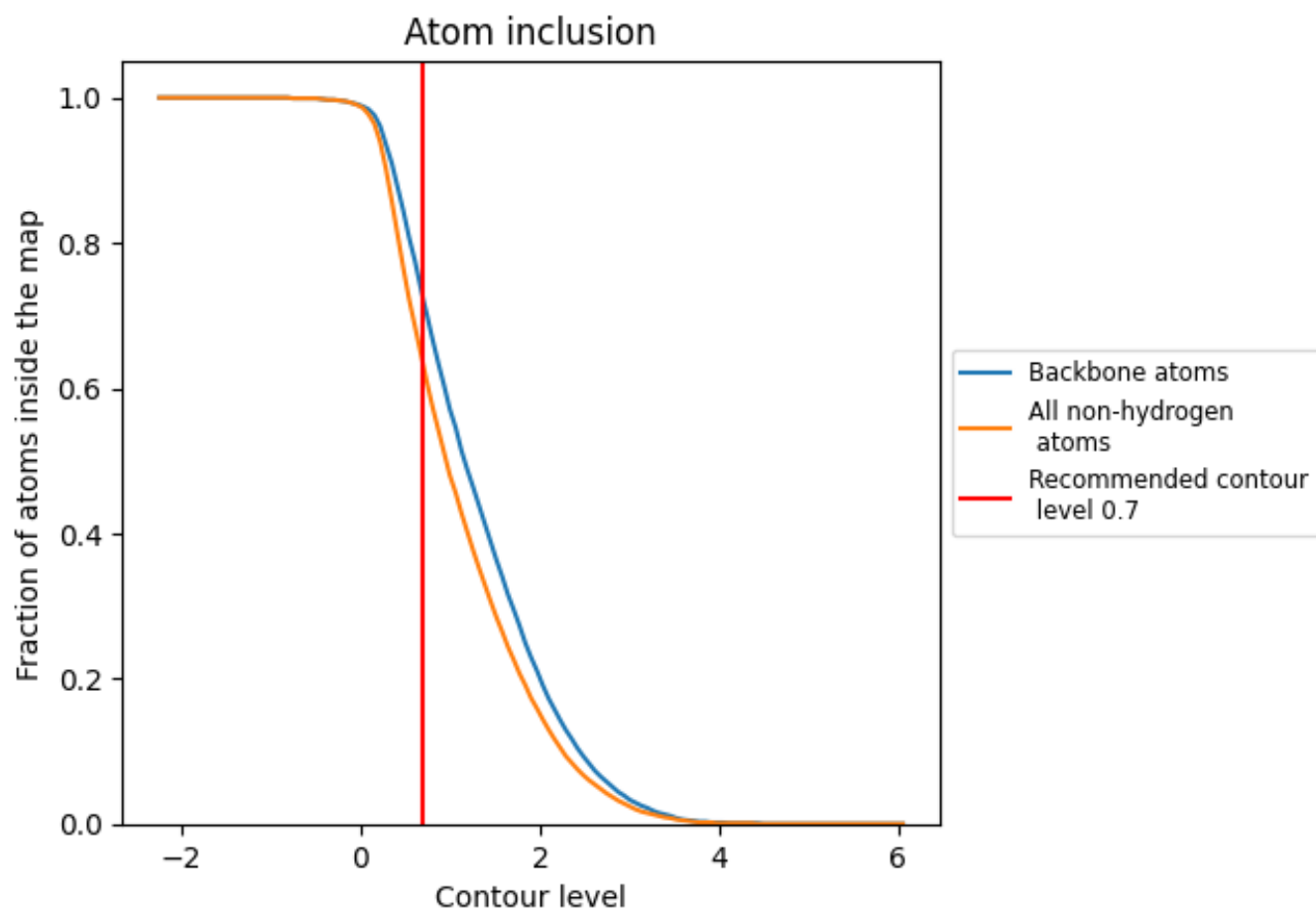
## 9.3 Atom inclusion mapped to coordinate model [i](#)



The images above show the model with each residue coloured according to its atom inclusion. This shows to what extent they are inside the map at the recommended contour level (0.7).











## 9.4 Atom inclusion [i](#)



At the recommended contour level, 72% of all backbone atoms, 63% of all non-hydrogen atoms, are inside the map.

## 9.5 Map-model fit summary [i](#)

The table lists the average atom inclusion at the recommended contour level (0.7) and Q-score for the entire model and for each chain.

Chain	Atom inclusion	Q-score
All	 0.6300	 0.2870
A	 0.7690	 0.4280
B	 0.4800	 0.1320
C	 0.7410	 0.4260

