



# Full wwPDB X-ray Structure Validation Report ⓘ

Mar 14, 2018 – 05:36 am GMT

PDB ID : 4Y5Q  
Title : Activated Calcium-Dependent Protein Kinase 1 from *Cryptosporidium parvum* (CpCDPK1) in complex with AMP  
Authors : Merritt, E.A.; Larson, E.T.; Medical Structural Genomics of Pathogenic Protozoa (MSGPP)  
Deposited on : 2015-02-11  
Resolution : 2.00 Å(reported)

This is a Full wwPDB X-ray Structure Validation Report for a publicly released PDB entry.

We welcome your comments at [validation@mail.wwpdb.org](mailto:validation@mail.wwpdb.org)

A user guide is available at

<https://www.wwpdb.org/validation/2017/XrayValidationReportHelp>

with specific help available everywhere you see the ⓘ symbol.

---

The following versions of software and data (see [references ⓘ](#)) were used in the production of this report:

MolProbity : 4.02b-467  
Mogul : 1.7.3 (157068), CSD as539be (2018)  
Xtriage (Phenix) : 1.13  
EDS : trunk31020  
Percentile statistics : 20171227.v01 (using entries in the PDB archive December 27th 2017)  
Refmac : 5.8.0158  
CCP4 : 7.0 (Gargrove)  
Ideal geometry (proteins) : Engh & Huber (2001)  
Ideal geometry (DNA, RNA) : Parkinson et al. (1996)  
Validation Pipeline (wwPDB-VP) : trunk31020

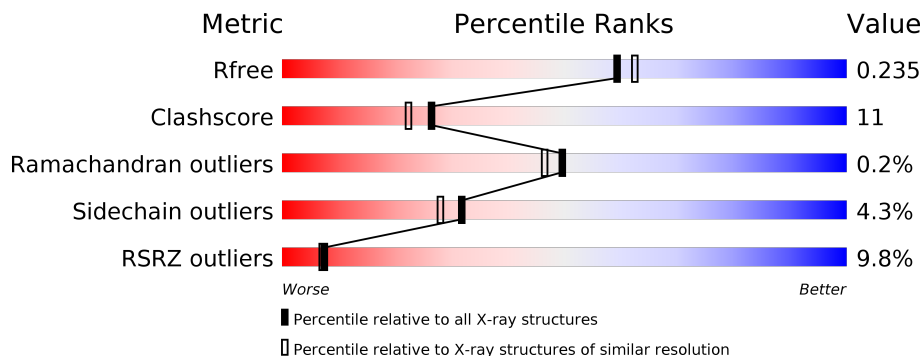
# 1 Overall quality at a glance

The following experimental techniques were used to determine the structure:

*X-RAY DIFFRACTION*

The reported resolution of this entry is 2.00 Å.

Percentile scores (ranging between 0-100) for global validation metrics of the entry are shown in the following graphic. The table shows the number of entries on which the scores are based.



Metric	Whole archive (#Entries)	Similar resolution (#Entries, resolution range(Å))
$R_{free}$	111664	7193 (2.00-2.00)
Clashscore	122126	8267 (2.00-2.00)
Ramachandran outliers	120053	8166 (2.00-2.00)
Sidechain outliers	120020	8165 (2.00-2.00)
RSRZ outliers	108989	7011 (2.00-2.00)

The table below summarises the geometric issues observed across the polymeric chains and their fit to the electron density. The red, orange, yellow and green segments on the lower bar indicate the fraction of residues that contain outliers for  $\geq 3$ , 2, 1 and 0 types of geometric quality criteria. A grey segment represents the fraction of residues that are not modelled. The numeric value for each fraction is indicated below the corresponding segment, with a dot representing fractions  $\leq 5\%$ . The upper red bar (where present) indicates the fraction of residues that have poor fit to the electron density. The numeric value is given above the bar.

Mol	Chain	Length	Quality of chain
1	A	486	

## 2 Entry composition [i](#)

There are 4 unique types of molecules in this entry. The entry contains 3760 atoms, of which 0 are hydrogens and 0 are deuteriums.

In the tables below, the ZeroOcc column contains the number of atoms modelled with zero occupancy, the AltConf column contains the number of residues with at least one atom in alternate conformation and the Trace column contains the number of residues modelled with at most 2 atoms.

- Molecule 1 is a protein called Calmodulin-domain protein kinase 1, putative.

Mol	Chain	Residues	Atoms					ZeroOcc	AltConf	Trace
			Total	C	N	O	S			
1	A	449	3618	2301	600	696	21	0	3	0

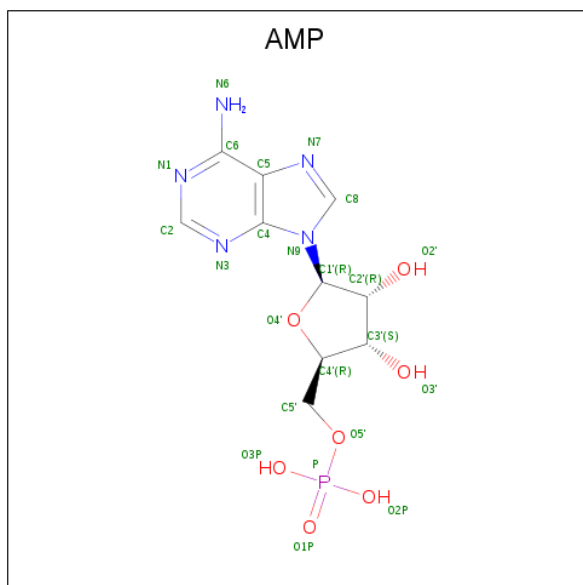
There are 17 discrepancies between the modelled and reference sequences:

Chain	Residue	Modelled	Actual	Comment	Reference
A	-16	MET	-	expression tag	UNP A3FQ16
A	-15	HIS	-	expression tag	UNP A3FQ16
A	-14	HIS	-	expression tag	UNP A3FQ16
A	-13	HIS	-	expression tag	UNP A3FQ16
A	-12	HIS	-	expression tag	UNP A3FQ16
A	-11	HIS	-	expression tag	UNP A3FQ16
A	-10	HIS	-	expression tag	UNP A3FQ16
A	-9	SER	-	expression tag	UNP A3FQ16
A	-8	SER	-	expression tag	UNP A3FQ16
A	-7	GLY	-	expression tag	UNP A3FQ16
A	-6	ARG	-	expression tag	UNP A3FQ16
A	-5	GLU	-	expression tag	UNP A3FQ16
A	-4	ASN	-	expression tag	UNP A3FQ16
A	-3	LEU	-	expression tag	UNP A3FQ16
A	-2	TYR	-	expression tag	UNP A3FQ16
A	-1	PHE	-	expression tag	UNP A3FQ16
A	0	GLN	-	expression tag	UNP A3FQ16

- Molecule 2 is CALCIUM ION (three-letter code: CA) (formula: Ca).

Mol	Chain	Residues	Atoms		ZeroOcc	AltConf
2	A	4	Total	Ca	0	0
			4	4		

- Molecule 3 is ADENOSINE MONOPHOSPHATE (three-letter code: AMP) (formula: C<sub>10</sub>H<sub>14</sub>N<sub>5</sub>O<sub>7</sub>P).



Mol	Chain	Residues	Atoms					ZeroOcc	AltConf
			Total	C	N	O	P		
3	A	1	23	10	5	7	1	0	0

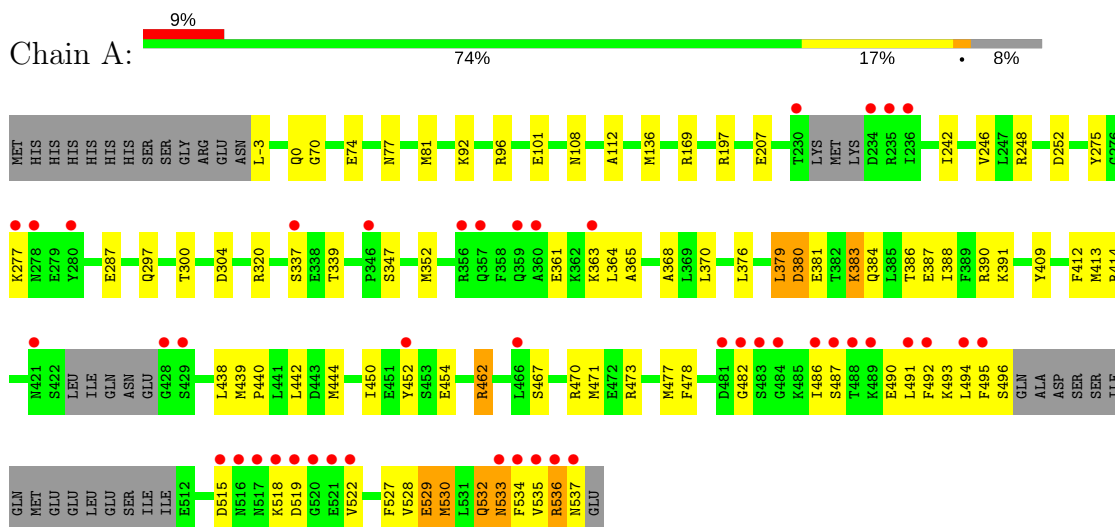
- Molecule 4 is water.

Mol	Chain	Residues	Atoms		ZeroOcc	AltConf
4	A	115	Total	O	0	0
			115	115		

### 3 Residue-property plots [i](#)

These plots are drawn for all protein, RNA and DNA chains in the entry. The first graphic for a chain summarises the proportions of the various outlier classes displayed in the second graphic. The second graphic shows the sequence view annotated by issues in geometry and electron density. Residues are color-coded according to the number of geometric quality criteria for which they contain at least one outlier: green = 0, yellow = 1, orange = 2 and red = 3 or more. A red dot above a residue indicates a poor fit to the electron density ( $RSRZ > 2$ ). Stretches of 2 or more consecutive residues without any outlier are shown as a green connector. Residues present in the sample, but not in the model, are shown in grey.

- Molecule 1: Calmodulin-domain protein kinase 1, putative



## 4 Data and refinement statistics

Property	Value	Source
Space group	P 1 21 1	Depositor
Cell constants a, b, c, $\alpha$ , $\beta$ , $\gamma$	60.07Å 55.89Å 81.45Å 90.00° 104.79° 90.00°	Depositor
Resolution (Å)	39.38 – 2.00 39.38 – 1.99	Depositor EDS
% Data completeness (in resolution range)	96.7 (39.38-2.00) 96.7 (39.38-1.99)	Depositor EDS
$R_{merge}$	(Not available)	Depositor
$R_{sym}$	0.06	Depositor
$\langle I/\sigma(I) \rangle$ <sup>1</sup>	1.77 (at 2.00Å)	Xtrriage
Refinement program	REFMAC 5.8.0073	Depositor
R, $R_{free}$	0.183 , 0.230 0.193 , 0.235	Depositor DCC
$R_{free}$ test set	1735 reflections (5.00%)	wwPDB-VP
Wilson B-factor (Å <sup>2</sup> )	35.6	Xtrriage
Anisotropy	0.278	Xtrriage
Bulk solvent $k_{sol}$ (e/Å <sup>3</sup> ), $B_{sol}$ (Å <sup>2</sup> )	0.33 , 57.4	EDS
L-test for twinning <sup>2</sup>	$\langle  L  \rangle = 0.49$ , $\langle L^2 \rangle = 0.33$	Xtrriage
Estimated twinning fraction	No twinning to report.	Xtrriage
$F_o, F_c$ correlation	0.96	EDS
Total number of atoms	3760	wwPDB-VP
Average B, all atoms (Å <sup>2</sup> )	62.0	wwPDB-VP

Xtrriage's analysis on translational NCS is as follows: *The largest off-origin peak in the Patterson function is 6.81% of the height of the origin peak. No significant pseudotranslation is detected.*

<sup>1</sup>Intensities estimated from amplitudes.

<sup>2</sup>Theoretical values of  $\langle |L| \rangle$ ,  $\langle L^2 \rangle$  for acentric reflections are 0.5, 0.333 respectively for untwinned datasets, and 0.375, 0.2 for perfectly twinned datasets.

## 5 Model quality [i](#)

### 5.1 Standard geometry [i](#)

Bond lengths and bond angles in the following residue types are not validated in this section: AMP, CA

The Z score for a bond length (or angle) is the number of standard deviations the observed value is removed from the expected value. A bond length (or angle) with  $|Z| > 5$  is considered an outlier worth inspection. RMSZ is the root-mean-square of all Z scores of the bond lengths (or angles).

Mol	Chain	Bond lengths		Bond angles	
		RMSZ	# Z  >5	RMSZ	# Z  >5
1	A	0.87	1/3686 (0.0%)	0.92	6/4959 (0.1%)

All (1) bond length outliers are listed below:

Mol	Chain	Res	Type	Atoms	Z	Observed(Å)	Ideal(Å)
1	A	0	GLN	C-N	7.05	1.45	1.33

All (6) bond angle outliers are listed below:

Mol	Chain	Res	Type	Atoms	Z	Observed(°)	Ideal(°)
1	A	169	ARG	NE-CZ-NH2	-8.14	116.23	120.30
1	A	454	GLU	OE1-CD-OE2	-6.16	115.91	123.30
1	A	390	ARG	NE-CZ-NH1	5.86	123.23	120.30
1	A	320	ARG	NE-CZ-NH2	-5.46	117.57	120.30
1	A	414	ARG	NE-CZ-NH1	5.32	122.96	120.30
1	A	169	ARG	NE-CZ-NH1	5.31	122.95	120.30

There are no chirality outliers.

There are no planarity outliers.

### 5.2 Too-close contacts [i](#)

In the following table, the Non-H and H(model) columns list the number of non-hydrogen atoms and hydrogen atoms in the chain respectively. The H(added) column lists the number of hydrogen atoms added and optimized by MolProbity. The Clashes column lists the number of clashes within the asymmetric unit, whereas Symm-Clashes lists symmetry related clashes.

Mol	Chain	Non-H	H(model)	H(added)	Clashes	Symm-Clashes
1	A	3618	0	3582	80	0

*Continued on next page...*

*Continued from previous page...*

Mol	Chain	Non-H	H(model)	H(added)	Clashes	Symm-Clashes
2	A	4	0	0	0	0
3	A	23	0	12	0	0
4	A	115	0	0	4	0
All	All	3760	0	3594	80	0

The all-atom clashscore is defined as the number of clashes found per 1000 atoms (including hydrogen atoms). The all-atom clashscore for this structure is 11.

All (80) close contacts within the same asymmetric unit are listed below, sorted by their clash magnitude.

Atom-1	Atom-2	Interatomic distance (Å)	Clash overlap (Å)
1:A:478:PHE:CE2	1:A:494:LEU:HD12	1.58	1.37
1:A:462:ARG:HG2	1:A:535:VAL:HG22	1.17	1.16
1:A:478:PHE:CE2	1:A:494:LEU:CD1	2.30	1.14
1:A:347:SER:HB3	1:A:388:ILE:HD11	1.17	1.14
1:A:478:PHE:HE2	1:A:494:LEU:CD1	1.70	1.00
1:A:384:GLN:OE1	1:A:384:GLN:N	1.96	0.99
1:A:491:LEU:HD21	1:A:495:PHE:HE2	1.29	0.97
1:A:478:PHE:CZ	1:A:494:LEU:HB2	1.99	0.96
1:A:347:SER:CB	1:A:388:ILE:HD11	1.96	0.95
1:A:478:PHE:CZ	1:A:494:LEU:HD12	2.02	0.94
1:A:491:LEU:HD21	1:A:495:PHE:CE2	2.13	0.82
1:A:515:ASP:OD2	1:A:518:LYS:HA	1.81	0.81
1:A:462:ARG:CG	1:A:535:VAL:HG22	2.08	0.79
1:A:478:PHE:HE2	1:A:494:LEU:HD12	1.02	0.76
1:A:491:LEU:HD23	1:A:491:LEU:O	1.85	0.76
1:A:515:ASP:OD2	1:A:518:LYS:CA	2.34	0.76
1:A:347:SER:HB3	1:A:388:ILE:CD1	2.07	0.75
1:A:462:ARG:HG2	1:A:535:VAL:CG2	2.08	0.74
1:A:478:PHE:CZ	1:A:494:LEU:CB	2.74	0.70
1:A:252:ASP:OD1	4:A:800:HOH:O	2.09	0.70
1:A:478:PHE:CE2	1:A:494:LEU:HB2	2.27	0.69
1:A:136:MET:HE2	4:A:801:HOH:O	1.94	0.68
1:A:492:PHE:CE2	1:A:496:SER:HB2	2.33	0.63
1:A:207:GLU:CD	1:A:379:LEU:HD11	2.20	0.62
1:A:515:ASP:OD2	1:A:519:ASP:N	2.33	0.61
1:A:77:ASN:HB2	1:A:96:ARG:NH2	2.18	0.58
1:A:478:PHE:CZ	1:A:494:LEU:CD1	2.79	0.57
1:A:337:SER:OG	4:A:766:HOH:O	2.17	0.56
1:A:478:PHE:CE2	1:A:494:LEU:HD13	2.36	0.56
1:A:491:LEU:CD2	1:A:495:PHE:HE2	2.09	0.56

*Continued on next page...*



*Continued from previous page...*

Atom-1	Atom-2	Interatomic distance (Å)	Clash overlap (Å)
1:A:491:LEU:CD2	1:A:495:PHE:CE2	2.86	0.56
1:A:478:PHE:CE1	1:A:494:LEU:HB2	2.41	0.55
1:A:136:MET:HE3	4:A:791:HOH:O	2.07	0.55
1:A:486:ILE:HA	1:A:490:GLU:OE1	2.08	0.53
1:A:491:LEU:HD23	1:A:491:LEU:C	2.28	0.53
1:A:383:LYS:O	1:A:386:THR:HB	2.09	0.52
1:A:275:TYR:CD2	1:A:275:TYR:N	2.77	0.52
1:A:442:LEU:HB3	1:A:450:ILE:HD12	1.91	0.52
1:A:376:LEU:HD11	1:A:477[B]:MET:HE3	1.93	0.51
1:A:515:ASP:CG	1:A:518:LYS:H	2.13	0.51
1:A:381:GLU:CD	1:A:470:ARG:HH22	2.14	0.51
1:A:370:LEU:HD22	1:A:444:MET:HE3	1.93	0.51
1:A:368:ALA:CB	1:A:494:LEU:HD21	2.42	0.50
1:A:528:VAL:O	1:A:532:GLN:HB2	2.12	0.49
1:A:242[A]:ILE:HG22	1:A:246:VAL:HB	1.94	0.49
1:A:368:ALA:HB2	1:A:494:LEU:HD21	1.95	0.48
1:A:386:THR:OG1	1:A:452:TYR:OH	2.26	0.47
1:A:536:ARG:HH21	1:A:536:ARG:CG	2.29	0.46
1:A:473:ARG:HG3	1:A:477[B]:MET:HE3	1.98	0.46
1:A:478:PHE:CZ	1:A:494:LEU:CG	2.99	0.45
1:A:486:ILE:HG22	1:A:487:SER:O	2.17	0.45
1:A:92:LYS:HE2	1:A:101:GLU:CD	2.37	0.45
1:A:412:PHE:CD2	1:A:413:MET:HE2	2.52	0.45
1:A:-3:LEU:HD11	1:A:482:GLY:HA3	1.99	0.44
1:A:438:LEU:HD21	1:A:442:LEU:HD11	1.99	0.44
1:A:522:VAL:CG1	1:A:527:PHE:HB2	2.48	0.44
1:A:530:MET:HE2	1:A:534:PHE:CE2	2.53	0.44
1:A:380:ASP:O	1:A:383:LYS:HG3	2.18	0.43
1:A:297:GLN:O	1:A:300:THR:HG22	2.18	0.43
1:A:439:MET:HB2	1:A:440:PRO:HD3	2.01	0.43
1:A:522:VAL:HG12	1:A:527:PHE:HB2	2.00	0.43
1:A:387:GLU:O	1:A:391:LYS:HG3	2.19	0.43
1:A:515:ASP:OD2	1:A:518:LYS:C	2.57	0.43
1:A:471:MET:CE	1:A:528:VAL:HA	2.49	0.42
1:A:70:GLY:O	1:A:74:GLU:HB2	2.20	0.42
1:A:361:GLU:HB3	1:A:365:ALA:HB3	2.00	0.42
1:A:439:MET:N	1:A:440:PRO:CD	2.83	0.42
1:A:530:MET:HA	1:A:533:ASN:HD22	1.85	0.42
1:A:536:ARG:HD3	1:A:537:ASN:H	1.84	0.42
1:A:438:LEU:HG	1:A:442:LEU:CD1	2.50	0.41
1:A:364:LEU:O	1:A:495:PHE:HE1	2.02	0.41

*Continued on next page...*

Continued from previous page...

Atom-1	Atom-2	Interatomic distance (Å)	Clash overlap (Å)
1:A:92:LYS:CE	1:A:101:GLU:OE1	2.68	0.41
1:A:529:GLU:O	1:A:533:ASN:HB3	2.21	0.41
1:A:383:LYS:HG3	1:A:383:LYS:H	1.68	0.41
1:A:492:PHE:O	1:A:493:LYS:C	2.58	0.41
1:A:248:ARG:NH2	1:A:287:GLU:OE2	2.53	0.40
1:A:108:ASN:O	1:A:112:ALA:HB3	2.22	0.40
1:A:471:MET:HE2	1:A:528:VAL:HA	2.03	0.40
1:A:492:PHE:CD2	1:A:496:SER:HB2	2.55	0.40
1:A:207:GLU:OE2	1:A:379:LEU:HD11	2.21	0.40

There are no symmetry-related clashes.

## 5.3 Torsion angles [i](#)

### 5.3.1 Protein backbone [i](#)

In the following table, the Percentiles column shows the percent Ramachandran outliers of the chain as a percentile score with respect to all X-ray entries followed by that with respect to entries of similar resolution.

The Analysed column shows the number of residues for which the backbone conformation was analysed, and the total number of residues.

Mol	Chain	Analysed	Favoured	Allowed	Outliers	Percentiles
1	A	444/486 (91%)	431 (97%)	12 (3%)	1 (0%)	49 46

All (1) Ramachandran outliers are listed below:

Mol	Chain	Res	Type
1	A	197	ARG

### 5.3.2 Protein sidechains [i](#)

In the following table, the Percentiles column shows the percent sidechain outliers of the chain as a percentile score with respect to all X-ray entries followed by that with respect to entries of similar resolution.

The Analysed column shows the number of residues for which the sidechain conformation was analysed, and the total number of residues.

Mol	Chain	Analysed	Rotameric	Outliers	Percentiles
1	A	399/439 (91%)	382 (96%)	17 (4%)	32 28

All (17) residues with a non-rotameric sidechain are listed below:

Mol	Chain	Res	Type
1	A	81	MET
1	A	277	LYS
1	A	304	ASP
1	A	339	THR
1	A	352	MET
1	A	363	LYS
1	A	379	LEU
1	A	380	ASP
1	A	383	LYS
1	A	409	TYR
1	A	462	ARG
1	A	467	SER
1	A	529	GLU
1	A	530	MET
1	A	532	GLN
1	A	533	ASN
1	A	536	ARG

Some sidechains can be flipped to improve hydrogen bonding and reduce clashes. All (2) such sidechains are listed below:

Mol	Chain	Res	Type
1	A	99	GLN
1	A	227	GLN

### 5.3.3 RNA [i](#)

There are no RNA molecules in this entry.

### 5.4 Non-standard residues in protein, DNA, RNA chains [i](#)

There are no non-standard protein/DNA/RNA residues in this entry.

### 5.5 Carbohydrates [i](#)

There are no carbohydrates in this entry.

## 5.6 Ligand geometry

Of 5 ligands modelled in this entry, 4 are monoatomic - leaving 1 for Mogul analysis.

In the following table, the Counts columns list the number of bonds (or angles) for which Mogul statistics could be retrieved, the number of bonds (or angles) that are observed in the model and the number of bonds (or angles) that are defined in the Chemical Component Dictionary. The Link column lists molecule types, if any, to which the group is linked. The Z score for a bond length (or angle) is the number of standard deviations the observed value is removed from the expected value. A bond length (or angle) with  $|Z| > 2$  is considered an outlier worth inspection. RMSZ is the root-mean-square of all Z scores of the bond lengths (or angles).

Mol	Type	Chain	Res	Link	Bond lengths			Bond angles		
					Counts	RMSZ	# Z  > 2	Counts	RMSZ	# Z  > 2
3	AMP	A	605	-	22,25,25	1.38	3 (13%)	23,38,38	2.22	4 (17%)

In the following table, the Chirals column lists the number of chiral outliers, the number of chiral centers analysed, the number of these observed in the model and the number defined in the Chemical Component Dictionary. Similar counts are reported in the Torsion and Rings columns. '-' means no outliers of that kind were identified.

Mol	Type	Chain	Res	Link	Chirals	Torsions	Rings
3	AMP	A	605	-	-	0/6/26/26	0/3/3/3

All (3) bond length outliers are listed below:

Mol	Chain	Res	Type	Atoms	Z	Observed(Å)	Ideal(Å)
3	A	605	AMP	C4-N3	-3.29	1.30	1.35
3	A	605	AMP	C8-N9	-2.13	1.34	1.36
3	A	605	AMP	C5-C4	2.34	1.45	1.40

All (4) bond angle outliers are listed below:

Mol	Chain	Res	Type	Atoms	Z	Observed(°)	Ideal(°)
3	A	605	AMP	N3-C2-N1	-8.31	121.75	128.86
3	A	605	AMP	O3'-C3'-C2'	-4.48	97.49	111.83
3	A	605	AMP	C2-N1-C6	2.35	122.74	118.75
3	A	605	AMP	O3P-P-O1P	2.45	120.15	110.60

There are no chirality outliers.

There are no torsion outliers.

There are no ring outliers.

No monomer is involved in short contacts.

## 5.7 Other polymers [i](#)

There are no such residues in this entry.

## 5.8 Polymer linkage issues [i](#)

There are no chain breaks in this entry.

## 6 Fit of model and data

### 6.1 Protein, DNA and RNA chains

In the following table, the column labelled ‘#RSRZ> 2’ contains the number (and percentage) of RSRZ outliers, followed by percent RSRZ outliers for the chain as percentile scores relative to all X-ray entries and entries of similar resolution. The OWAB column contains the minimum, median, 95<sup>th</sup> percentile and maximum values of the occupancy-weighted average B-factor per residue. The column labelled ‘Q< 0.9’ lists the number of (and percentage) of residues with an average occupancy less than 0.9.

Mol	Chain	Analysed	<RSRZ>	#RSRZ>2	OWAB(Å <sup>2</sup> )	Q<0.9
1	A	449/486 (92%)	0.44	44 (9%) <b>7</b> <b>7</b>	34, 57, 116, 151	0

All (44) RSRZ outliers are listed below:

Mol	Chain	Res	Type	RSRZ
1	A	360	ALA	8.9
1	A	495	PHE	8.1
1	A	537	ASN	7.1
1	A	491	LEU	6.1
1	A	536	ARG	5.7
1	A	234	ASP	5.4
1	A	487	SER	5.3
1	A	492	PHE	5.3
1	A	494	LEU	5.3
1	A	428	GLY	5.1
1	A	516	ASN	5.1
1	A	518	LYS	4.9
1	A	517	ASN	4.6
1	A	236	ILE	4.4
1	A	429	SER	4.3
1	A	519	ASP	4.2
1	A	359	GLN	4.2
1	A	522	VAL	4.2
1	A	488	THR	4.1
1	A	483	SER	3.8
1	A	337	SER	3.7
1	A	520	GLY	3.7
1	A	280	TYR	3.6
1	A	533	ASN	3.3
1	A	357	GLN	3.1
1	A	421	ASN	3.1
1	A	521	GLU	3.1

*Continued on next page...*

*Continued from previous page...*

Mol	Chain	Res	Type	RSRZ
1	A	482	GLY	2.9
1	A	534	PHE	2.9
1	A	230	THR	2.8
1	A	489	LYS	2.8
1	A	363	LYS	2.8
1	A	535	VAL	2.7
1	A	466	LEU	2.6
1	A	481	ASP	2.6
1	A	235	ARG	2.6
1	A	452	TYR	2.5
1	A	278	ASN	2.5
1	A	486	ILE	2.5
1	A	277	LYS	2.4
1	A	484	GLY	2.3
1	A	346	PRO	2.3
1	A	356	ARG	2.1
1	A	515	ASP	2.0

## 6.2 Non-standard residues in protein, DNA, RNA chains [i](#)

There are no non-standard protein/DNA/RNA residues in this entry.

## 6.3 Carbohydrates [i](#)

There are no carbohydrates in this entry.

## 6.4 Ligands [i](#)

In the following table, the Atoms column lists the number of modelled atoms in the group and the number defined in the chemical component dictionary. The B-factors column lists the minimum, median, 95<sup>th</sup> percentile and maximum values of B factors of atoms in the group. The column labelled 'Q< 0.9' lists the number of atoms with occupancy less than 0.9.

Mol	Type	Chain	Res	Atoms	RSCC	RSR	B-factors(Å <sup>2</sup> )	Q<0.9
2	CA	A	604	1/1	0.08	0.19	120,120,120,120	0
2	CA	A	603	1/1	0.83	0.17	100,100,100,100	0
3	AMP	A	605	23/23	0.97	0.10	32,42,60,64	0
2	CA	A	602	1/1	0.98	0.08	54,54,54,54	0
2	CA	A	601	1/1	0.99	0.09	42,42,42,42	0

## 6.5 Other polymers [i](#)

There are no such residues in this entry.