



Full wwPDB X-ray Structure Validation Report ⓘ

Nov 13, 2023 – 10:07 PM JST

PDB ID : 5Y7P
Title : Bile salt hydrolase from lactobacillus salivarius complex with glycocholic acid and cholic acid
Authors : Hu, X.-J.
Deposited on : 2017-08-17
Resolution : 2.10 Å(reported)

This is a Full wwPDB X-ray Structure Validation Report for a publicly released PDB entry.

We welcome your comments at validation@mail.wwpdb.org

A user guide is available at

<https://www.wwpdb.org/validation/2017/XrayValidationReportHelp>

with specific help available everywhere you see the ⓘ symbol.

The types of validation reports are described at

<http://www.wwpdb.org/validation/2017/FAQs#types>.

The following versions of software and data (see [references ⓘ](#)) were used in the production of this report:

MolProbity : 4.02b-467
Mogul : 1.8.5 (274361), CSD as541be (2020)
Xtrriage (Phenix) : 1.13
EDS : 2.36
buster-report : 1.1.7 (2018)
Percentile statistics : 20191225.v01 (using entries in the PDB archive December 25th 2019)
Refmac : 5.8.0158
CCP4 : 7.0.044 (Gargrove)
Ideal geometry (proteins) : Engh & Huber (2001)
Ideal geometry (DNA, RNA) : Parkinson et al. (1996)
Validation Pipeline (wwPDB-VP) : 2.36

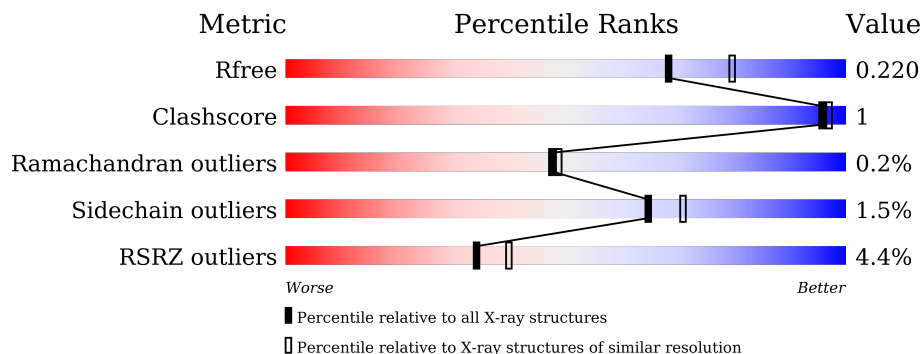
1 Overall quality at a glance

The following experimental techniques were used to determine the structure:

X-RAY DIFFRACTION

The reported resolution of this entry is 2.10 Å.

Percentile scores (ranging between 0-100) for global validation metrics of the entry are shown in the following graphic. The table shows the number of entries on which the scores are based.



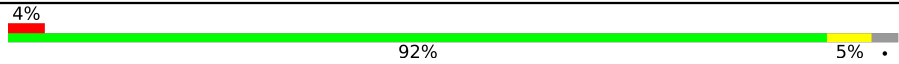
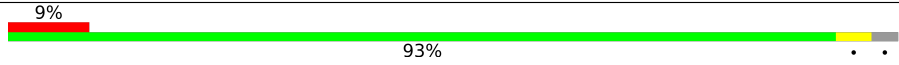
Metric	Whole archive (#Entries)	Similar resolution (#Entries, resolution range(Å))
R_{free}	130704	5197 (2.10-2.10)
Clashscore	141614	5710 (2.10-2.10)
Ramachandran outliers	138981	5647 (2.10-2.10)
Sidechain outliers	138945	5648 (2.10-2.10)
RSRZ outliers	127900	5083 (2.10-2.10)

The table below summarises the geometric issues observed across the polymeric chains and their fit to the electron density. The red, orange, yellow and green segments of the lower bar indicate the fraction of residues that contain outliers for ≥ 3 , 2, 1 and 0 types of geometric quality criteria respectively. A grey segment represents the fraction of residues that are not modelled. The numeric value for each fraction is indicated below the corresponding segment, with a dot representing fractions $\leq 5\%$. The upper red bar (where present) indicates the fraction of residues that have poor fit to the electron density. The numeric value is given above the bar.

Mol	Chain	Length	Quality of chain
1	A	333	 2% 96%
1	B	333	 5% 93%
1	C	333	 4% 94%
1	D	333	 4% 93%
1	E	333	 5% 94%
1	F	333	 3% 94%

Continued on next page...

Continued from previous page...

Mol	Chain	Length	Quality of chain
1	G	333	
1	H	333	

2 Entry composition i

There are 8 unique types of molecules in this entry. The entry contains 21964 atoms, of which 0 are hydrogens and 0 are deuteriums.

In the tables below, the ZeroOcc column contains the number of atoms modelled with zero occupancy, the AltConf column contains the number of residues with at least one atom in alternate conformation and the Trace column contains the number of residues modelled with at most 2 atoms.

- Molecule 1 is a protein called Bile salt hydrolase.

Mol	Chain	Residues	Atoms					ZeroOcc	AltConf	Trace
			Total	C	N	O	S			
1	A	327	Total 2617	C 1662	N 433	O 516	S 6	0	0	0
1	B	323	Total 2579	C 1639	N 424	O 510	S 6	0	0	0
1	C	322	Total 2580	C 1640	N 424	O 510	S 6	0	1	0
1	D	322	Total 2571	C 1635	N 422	O 508	S 6	0	0	0
1	E	322	Total 2580	C 1641	N 424	O 509	S 6	0	1	0
1	F	322	Total 2580	C 1640	N 423	O 511	S 6	0	1	0
1	G	322	Total 2571	C 1635	N 422	O 508	S 6	0	0	0
1	H	323	Total 2588	C 1645	N 426	O 511	S 6	0	1	0

There are 72 discrepancies between the modelled and reference sequences:

Chain	Residue	Modelled	Actual	Comment	Reference
A	325	LEU	-	expression tag	UNP J7H3P9
A	326	GLU	-	expression tag	UNP J7H3P9
A	327	ARG	-	expression tag	UNP J7H3P9
A	328	HIS	-	expression tag	UNP J7H3P9
A	329	HIS	-	expression tag	UNP J7H3P9
A	330	HIS	-	expression tag	UNP J7H3P9
A	331	HIS	-	expression tag	UNP J7H3P9
A	332	HIS	-	expression tag	UNP J7H3P9
A	333	HIS	-	expression tag	UNP J7H3P9
B	325	LEU	-	expression tag	UNP J7H3P9
B	326	GLU	-	expression tag	UNP J7H3P9
B	327	ARG	-	expression tag	UNP J7H3P9
B	328	HIS	-	expression tag	UNP J7H3P9

Continued on next page...

Continued from previous page...

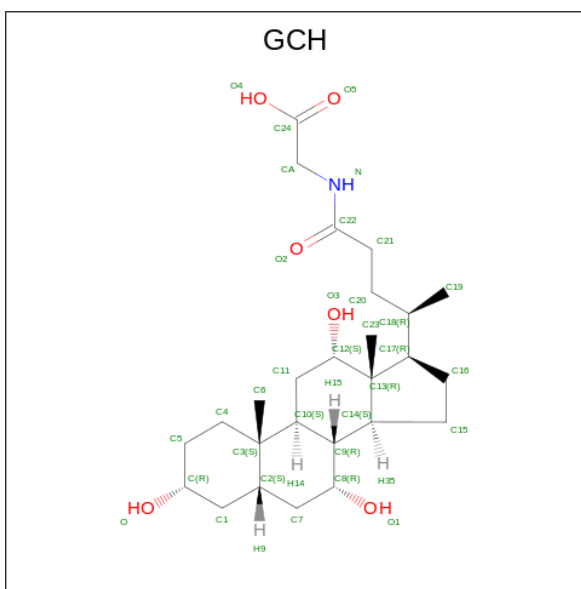
Chain	Residue	Modelled	Actual	Comment	Reference
B	329	HIS	-	expression tag	UNP J7H3P9
B	330	HIS	-	expression tag	UNP J7H3P9
B	331	HIS	-	expression tag	UNP J7H3P9
B	332	HIS	-	expression tag	UNP J7H3P9
B	333	HIS	-	expression tag	UNP J7H3P9
C	325	LEU	-	expression tag	UNP J7H3P9
C	326	GLU	-	expression tag	UNP J7H3P9
C	327	ARG	-	expression tag	UNP J7H3P9
C	328	HIS	-	expression tag	UNP J7H3P9
C	329	HIS	-	expression tag	UNP J7H3P9
C	330	HIS	-	expression tag	UNP J7H3P9
C	331	HIS	-	expression tag	UNP J7H3P9
C	332	HIS	-	expression tag	UNP J7H3P9
C	333	HIS	-	expression tag	UNP J7H3P9
D	325	LEU	-	expression tag	UNP J7H3P9
D	326	GLU	-	expression tag	UNP J7H3P9
D	327	ARG	-	expression tag	UNP J7H3P9
D	328	HIS	-	expression tag	UNP J7H3P9
D	329	HIS	-	expression tag	UNP J7H3P9
D	330	HIS	-	expression tag	UNP J7H3P9
D	331	HIS	-	expression tag	UNP J7H3P9
D	332	HIS	-	expression tag	UNP J7H3P9
D	333	HIS	-	expression tag	UNP J7H3P9
E	325	LEU	-	expression tag	UNP J7H3P9
E	326	GLU	-	expression tag	UNP J7H3P9
E	327	ARG	-	expression tag	UNP J7H3P9
E	328	HIS	-	expression tag	UNP J7H3P9
E	329	HIS	-	expression tag	UNP J7H3P9
E	330	HIS	-	expression tag	UNP J7H3P9
E	331	HIS	-	expression tag	UNP J7H3P9
E	332	HIS	-	expression tag	UNP J7H3P9
E	333	HIS	-	expression tag	UNP J7H3P9
F	325	LEU	-	expression tag	UNP J7H3P9
F	326	GLU	-	expression tag	UNP J7H3P9
F	327	ARG	-	expression tag	UNP J7H3P9
F	328	HIS	-	expression tag	UNP J7H3P9
F	329	HIS	-	expression tag	UNP J7H3P9
F	330	HIS	-	expression tag	UNP J7H3P9
F	331	HIS	-	expression tag	UNP J7H3P9
F	332	HIS	-	expression tag	UNP J7H3P9
F	333	HIS	-	expression tag	UNP J7H3P9
G	325	LEU	-	expression tag	UNP J7H3P9

Continued on next page...

Continued from previous page...

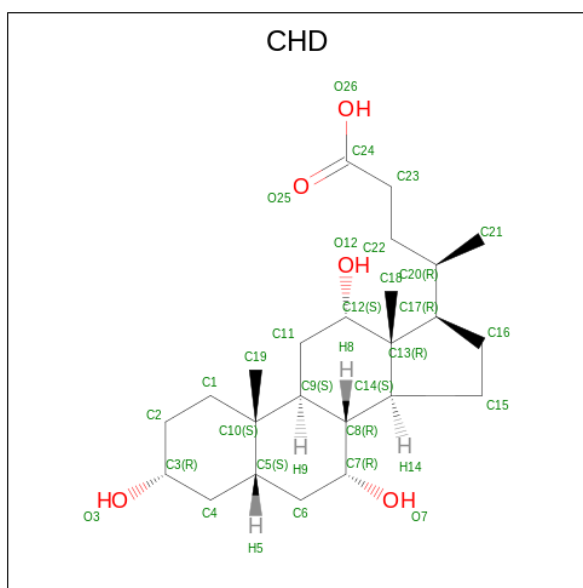
Chain	Residue	Modelled	Actual	Comment	Reference
G	326	GLU	-	expression tag	UNP J7H3P9
G	327	ARG	-	expression tag	UNP J7H3P9
G	328	HIS	-	expression tag	UNP J7H3P9
G	329	HIS	-	expression tag	UNP J7H3P9
G	330	HIS	-	expression tag	UNP J7H3P9
G	331	HIS	-	expression tag	UNP J7H3P9
G	332	HIS	-	expression tag	UNP J7H3P9
G	333	HIS	-	expression tag	UNP J7H3P9
H	325	LEU	-	expression tag	UNP J7H3P9
H	326	GLU	-	expression tag	UNP J7H3P9
H	327	ARG	-	expression tag	UNP J7H3P9
H	328	HIS	-	expression tag	UNP J7H3P9
H	329	HIS	-	expression tag	UNP J7H3P9
H	330	HIS	-	expression tag	UNP J7H3P9
H	331	HIS	-	expression tag	UNP J7H3P9
H	332	HIS	-	expression tag	UNP J7H3P9
H	333	HIS	-	expression tag	UNP J7H3P9

- Molecule 2 is GLYCOCHOLIC ACID (three-letter code: GCH) (formula: $C_{26}H_{43}NO_6$).



Mol	Chain	Residues	Atoms				ZeroOcc	AltConf
2	A	1	Total	C	N	O	0	0
			33	26	1	6		
2	A	1	Total	C	N	O	0	0
			33	26	1	6		
2	F	1	Total	C	N	O	0	0
			33	26	1	6		

- Molecule 3 is CHOLIC ACID (three-letter code: CHD) (formula: $C_{24}H_{40}O_5$).



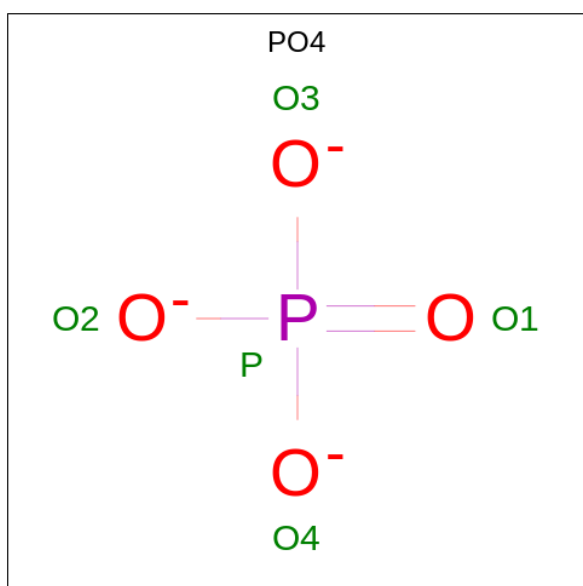
Mol	Chain	Residues	Atoms	ZeroOcc	AltConf
3	B	1	Total C O 29 24 5	0	0
3	C	1	Total C O 29 24 5	0	0
3	D	1	Total C O 29 24 5	0	0
3	E	1	Total C O 29 24 5	0	0
3	G	1	Total C O 29 24 5	0	0
3	H	1	Total C O 29 24 5	0	0

- Molecule 4 is GLYCEROL (three-letter code: GOL) (formula: $C_3H_8O_3$).



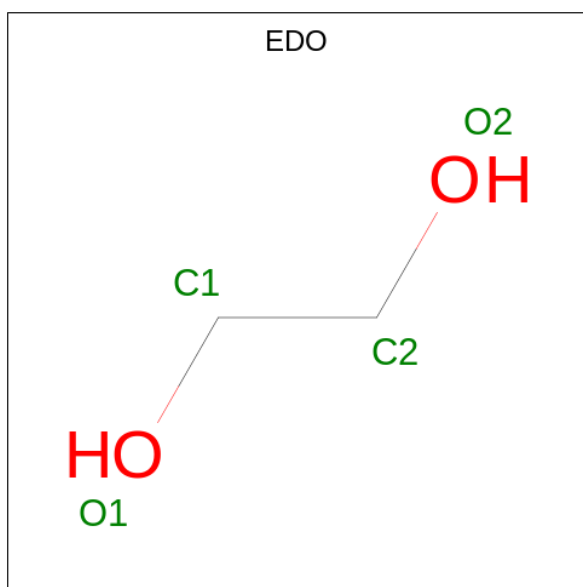
Mol	Chain	Residues	Atoms	ZeroOcc	AltConf
4	B	1	Total C O 6 3 3	0	0
4	E	1	Total C O 6 3 3	0	0

- Molecule 5 is PHOSPHATE ION (three-letter code: PO4) (formula: O_4P).



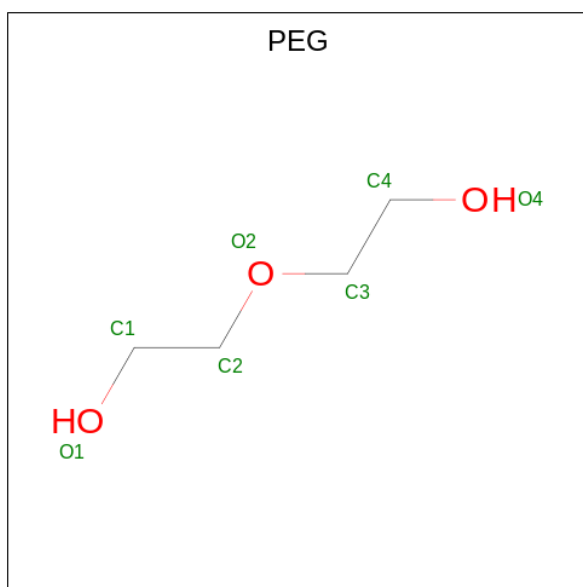
Mol	Chain	Residues	Atoms	ZeroOcc	AltConf
5	B	1	Total O P 5 4 1	0	0

- Molecule 6 is 1,2-ETHANEDIOL (three-letter code: EDO) (formula: $C_2H_6O_2$).



Mol	Chain	Residues	Atoms			ZeroOcc	AltConf
6	D	1	Total	C	O	0	0
			4	2	2		
6	G	1	Total	C	O	0	0
			4	2	2		
6	H	1	Total	C	O	0	0
			4	2	2		

- Molecule 7 is DI(HYDROXYETHYL)ETHER (three-letter code: PEG) (formula: C₄H₁₀O₃).



Mol	Chain	Residues	Atoms			ZeroOcc	AltConf
7	F	1	Total	C	O	0	0
			7	4	3		

- Molecule 8 is water.

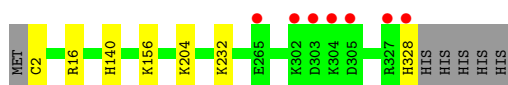
Mol	Chain	Residues	Atoms		ZeroOcc	AltConf
8	A	161	Total 161	O 161	0	0
8	B	128	Total 128	O 128	0	0
8	C	110	Total 110	O 110	0	0
8	D	132	Total 132	O 132	0	0
8	E	113	Total 113	O 113	0	0
8	F	140	Total 140	O 140	0	0
8	G	108	Total 108	O 108	0	0
8	H	97	Total 97	O 97	0	0

3 Residue-property plots i

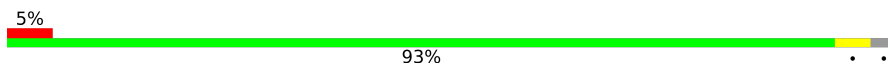
These plots are drawn for all protein, RNA, DNA and oligosaccharide chains in the entry. The first graphic for a chain summarises the proportions of the various outlier classes displayed in the second graphic. The second graphic shows the sequence view annotated by issues in geometry and electron density. Residues are color-coded according to the number of geometric quality criteria for which they contain at least one outlier: green = 0, yellow = 1, orange = 2 and red = 3 or more. A red dot above a residue indicates a poor fit to the electron density ($RSRZ > 2$). Stretches of 2 or more consecutive residues without any outlier are shown as a green connector. Residues present in the sample, but not in the model, are shown in grey.

- Molecule 1: Bile salt hydrolase

Chain A: 



- Molecule 1: Bile salt hydrolase

Chain B: 

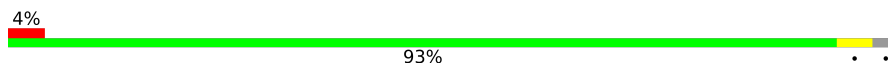


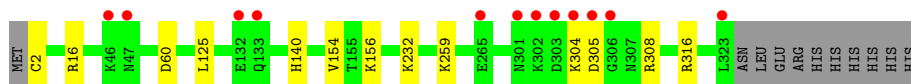
- Molecule 1: Bile salt hydrolase

Chain C: 

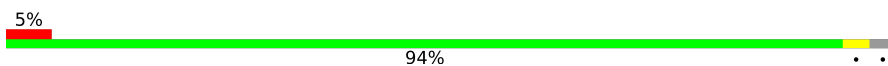


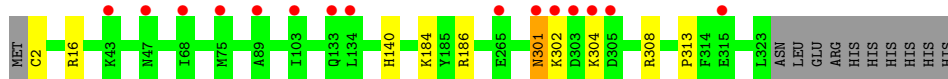
- Molecule 1: Bile salt hydrolase

Chain D: 



- Molecule 1: Bile salt hydrolase

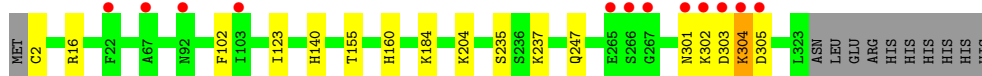
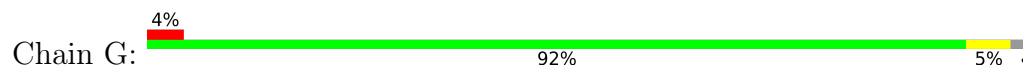
Chain E: 



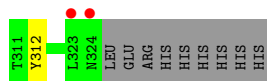
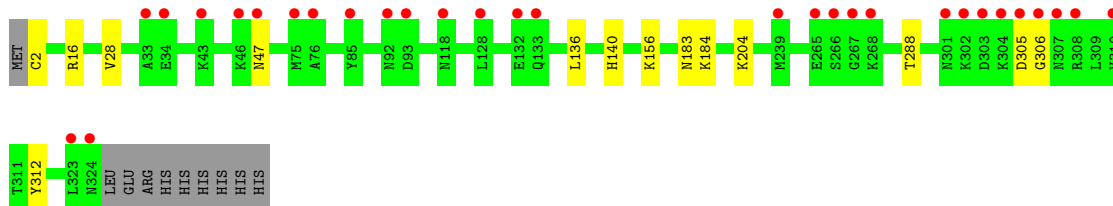
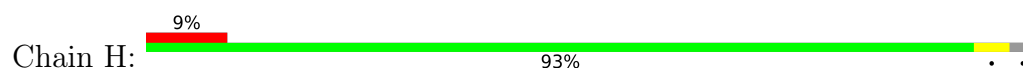
- Molecule 1: Bile salt hydrolase



- Molecule 1: Bile salt hydrolase



- Molecule 1: Bile salt hydrolase



4 Data and refinement statistics i

Property	Value	Source
Space group	P 1 21 1	Depositor
Cell constants a, b, c, α , β , γ	84.01Å 94.09Å 166.97Å 90.00° 90.64° 90.00°	Depositor
Resolution (Å)	28.50 – 2.10 28.39 – 2.10	Depositor EDS
% Data completeness (in resolution range)	94.5 (28.50-2.10) 94.6 (28.39-2.10)	Depositor EDS
R_{merge}	0.07	Depositor
R_{sym}	(Not available)	Depositor
$\langle I/\sigma(I) \rangle$ ¹	7.10 (at 2.10Å)	Xtrriage
Refinement program	REFMAC 5.8.0158	Depositor
R, R_{free}	0.160 , 0.213 0.180 , 0.220	Depositor DCC
R_{free} test set	7338 reflections (5.12%)	wwPDB-VP
Wilson B-factor (Å ²)	24.4	Xtrriage
Anisotropy	0.048	Xtrriage
Bulk solvent k_{sol} (e/Å ³), B_{sol} (Å ²)	0.39 , 47.8	EDS
L-test for twinning ²	$\langle L \rangle = 0.50$, $\langle L^2 \rangle = 0.33$	Xtrriage
Estimated twinning fraction	0.017 for h,-k,-l	Xtrriage
F_o, F_c correlation	0.95	EDS
Total number of atoms	21964	wwPDB-VP
Average B, all atoms (Å ²)	28.0	wwPDB-VP

Xtrriage's analysis on translational NCS is as follows: *The largest off-origin peak in the Patterson function is 2.80% of the height of the origin peak. No significant pseudotranslation is detected.*

¹Intensities estimated from amplitudes.

²Theoretical values of $\langle |L| \rangle$, $\langle L^2 \rangle$ for acentric reflections are 0.5, 0.333 respectively for untwinned datasets, and 0.375, 0.2 for perfectly twinned datasets.

5 Model quality [i](#)

5.1 Standard geometry [i](#)

Bond lengths and bond angles in the following residue types are not validated in this section: CHD, GOL, EDO, OCS, PO4, GCH, PEG

The Z score for a bond length (or angle) is the number of standard deviations the observed value is removed from the expected value. A bond length (or angle) with $|Z| > 5$ is considered an outlier worth inspection. RMSZ is the root-mean-square of all Z scores of the bond lengths (or angles).

Mol	Chain	Bond lengths		Bond angles	
		RMSZ	# Z >5	RMSZ	# Z >5
1	A	0.34	0/2663	0.58	0/3610
1	B	0.34	0/2624	0.57	0/3558
1	C	0.34	0/2625	0.57	0/3559
1	D	0.35	0/2616	0.58	0/3547
1	E	0.34	0/2625	0.56	0/3558
1	F	0.34	0/2625	0.57	0/3559
1	G	0.39	0/2616	0.61	0/3547
1	H	0.34	0/2633	0.56	0/3569
All	All	0.35	0/21027	0.57	0/28507

There are no bond length outliers.

There are no bond angle outliers.

There are no chirality outliers.

There are no planarity outliers.

5.2 Too-close contacts [i](#)

In the following table, the Non-H and H(model) columns list the number of non-hydrogen atoms and hydrogen atoms in the chain respectively. The H(added) column lists the number of hydrogen atoms added and optimized by MolProbity. The Clashes column lists the number of clashes within the asymmetric unit, whereas Symm-Clashes lists symmetry-related clashes.

Mol	Chain	Non-H	H(model)	H(added)	Clashes	Symm-Clashes
1	A	2617	0	2544	1	0
1	B	2579	0	2507	7	0
1	C	2580	0	2507	5	0
1	D	2571	0	2501	5	0
1	E	2580	0	2512	3	0

Continued on next page...

Continued from previous page...

Mol	Chain	Non-H	H(model)	H(added)	Clashes	Symm-Clashes
1	F	2580	0	2505	5	0
1	G	2571	0	2500	6	0
1	H	2588	0	2518	6	0
2	A	66	0	84	0	0
2	F	33	0	42	3	0
3	B	29	0	39	4	0
3	C	29	0	39	1	0
3	D	29	0	39	2	0
3	E	29	0	39	0	0
3	G	29	0	39	1	0
3	H	29	0	39	1	0
4	B	6	0	8	0	0
4	E	6	0	8	0	0
5	B	5	0	0	0	0
6	D	4	0	6	0	0
6	G	4	0	6	0	0
6	H	4	0	6	0	0
7	F	7	0	10	2	0
8	A	161	0	0	4	0
8	B	128	0	0	1	0
8	C	110	0	0	1	0
8	D	132	0	0	3	0
8	E	113	0	0	2	0
8	F	140	0	0	4	0
8	G	108	0	0	1	0
8	H	97	0	0	5	0
All	All	21964	0	20498	47	0

The all-atom clashscore is defined as the number of clashes found per 1000 atoms (including hydrogen atoms). The all-atom clashscore for this structure is 1.

All (47) close contacts within the same asymmetric unit are listed below, sorted by their clash magnitude.

Atom-1	Atom-2	Interatomic distance (Å)	Clash overlap (Å)
1:C:156:LYS:NZ	8:C:501:HOH:O	1.73	1.17
1:D:316:ARG:NH1	8:D:501:HOH:O	1.95	0.99
1:G:301:ASN:HB2	1:G:304:LYS:HE3	1.56	0.86
2:F:401:GCH:H20	2:F:401:GCH:H40	1.77	0.65
8:A:632:HOH:O	1:C:184:LYS:CE	2.45	0.65
1:B:79:ASN:HB2	3:B:401:CHD:H232	1.80	0.64
1:B:32:PRO:HB3	1:B:305:ASP:HB2	1.81	0.63

Continued on next page...

Continued from previous page...

Atom-1	Atom-2	Interatomic distance (Å)	Clash overlap (Å)
1:F:43:LYS:HD2	8:F:626:HOH:O	2.00	0.61
1:G:184:LYS:HE3	8:G:558:HOH:O	2.01	0.61
1:A:156:LYS:HG3	8:A:544:HOH:O	2.00	0.60
8:F:509:HOH:O	1:H:184:LYS:HE2	2.02	0.59
8:A:632:HOH:O	1:C:184:LYS:HE2	2.02	0.58
3:H:401:CHD:H212	3:H:401:CHD:H12	1.86	0.57
3:D:401:CHD:O26	3:D:401:CHD:H211	2.06	0.56
3:B:401:CHD:H212	3:B:401:CHD:H12	1.87	0.56
1:D:60:ASP:OD1	1:D:308:ARG:NH2	2.40	0.55
1:H:183:ASN:ND2	8:H:503:HOH:O	2.37	0.55
8:A:632:HOH:O	1:C:184:LYS:HE3	2.08	0.53
1:E:184:LYS:HE3	8:E:564:HOH:O	2.07	0.53
1:F:79:ASN:HB2	2:F:401:GCH:H26	1.91	0.52
3:C:401:CHD:H12	3:C:401:CHD:H212	1.93	0.50
7:F:402:PEG:H42	8:H:564:HOH:O	2.10	0.50
1:D:156:LYS:HG2	8:D:518:HOH:O	2.10	0.49
1:B:79:ASN:HB2	3:B:401:CHD:C23	2.43	0.47
1:D:125:LEU:HD12	1:D:154:VAL:HG21	1.96	0.47
1:F:117:ARG:NH2	1:F:163:ASP:OD1	2.46	0.46
1:F:184:LYS:NZ	8:F:509:HOH:O	2.49	0.46
7:F:402:PEG:C4	8:H:564:HOH:O	2.64	0.46
1:B:20:LEU:HD13	3:B:401:CHD:H211	1.98	0.45
1:G:302:LYS:H	1:G:302:LYS:HG3	1.54	0.45
1:H:288:THR:HA	8:H:501:HOH:O	2.16	0.45
1:F:79:ASN:HB2	2:F:401:GCH:C21	2.47	0.45
1:H:28:VAL:HB	1:H:312:TYR:HB2	1.98	0.45
1:B:3:THR:HG21	1:B:255:VAL:HG21	2.00	0.44
1:G:155:THR:HG22	1:G:160:HIS:CD2	2.52	0.44
8:F:509:HOH:O	1:H:184:LYS:CE	2.64	0.43
1:E:186:ARG:HD2	8:E:553:HOH:O	2.18	0.43
1:H:136:LEU:HD23	8:H:526:HOH:O	2.18	0.43
1:B:125:LEU:HD12	1:B:154:VAL:HG21	2.00	0.43
1:C:125:LEU:HD12	1:C:154:VAL:HG21	2.00	0.43
1:E:301:ASN:OD1	1:E:302:LYS:N	2.53	0.42
1:D:259:LYS:NZ	8:D:502:HOH:O	2.35	0.42
1:G:235:SER:HB2	1:G:247:GLN:HE21	1.85	0.42
1:B:186:ARG:HD2	8:B:519:HOH:O	2.19	0.41
3:G:401:CHD:O26	3:G:401:CHD:H211	2.20	0.41
3:D:401:CHD:H212	3:D:401:CHD:H12	2.03	0.41
1:G:102:PHE:CE1	1:G:123:ILE:HD13	2.56	0.40

There are no symmetry-related clashes.

5.3 Torsion angles [i](#)

5.3.1 Protein backbone [i](#)

In the following table, the Percentiles column shows the percent Ramachandran outliers of the chain as a percentile score with respect to all X-ray entries followed by that with respect to entries of similar resolution.

The Analysed column shows the number of residues for which the backbone conformation was analysed, and the total number of residues.

Mol	Chain	Analysed	Favoured	Allowed	Outliers	Percentiles	
1	A	325/333 (98%)	314 (97%)	11 (3%)	0	100	100
1	B	321/333 (96%)	309 (96%)	12 (4%)	0	100	100
1	C	321/333 (96%)	313 (98%)	8 (2%)	0	100	100
1	D	320/333 (96%)	308 (96%)	11 (3%)	1 (0%)	41	41
1	E	321/333 (96%)	313 (98%)	7 (2%)	1 (0%)	41	41
1	F	321/333 (96%)	312 (97%)	9 (3%)	0	100	100
1	G	320/333 (96%)	307 (96%)	12 (4%)	1 (0%)	41	41
1	H	322/333 (97%)	309 (96%)	12 (4%)	1 (0%)	41	41
All	All	2571/2664 (96%)	2485 (97%)	82 (3%)	4 (0%)	47	49

All (4) Ramachandran outliers are listed below:

Mol	Chain	Res	Type
1	D	305	ASP
1	H	306	GLY
1	E	301	ASN
1	G	304	LYS

5.3.2 Protein sidechains [i](#)

In the following table, the Percentiles column shows the percent sidechain outliers of the chain as a percentile score with respect to all X-ray entries followed by that with respect to entries of similar resolution.

The Analysed column shows the number of residues for which the sidechain conformation was analysed, and the total number of residues.

Mol	Chain	Analysed	Rotameric	Outliers	Percentiles	
1	A	289/295 (98%)	284 (98%)	5 (2%)	60	67

Continued on next page...

Continued from previous page...

Mol	Chain	Analysed	Rotameric	Outliers	Percentiles	
1	B	285/295 (97%)	283 (99%)	2 (1%)	84	88
1	C	285/295 (97%)	281 (99%)	4 (1%)	67	73
1	D	284/295 (96%)	280 (99%)	4 (1%)	67	73
1	E	285/295 (97%)	280 (98%)	5 (2%)	59	65
1	F	285/295 (97%)	282 (99%)	3 (1%)	73	79
1	G	284/295 (96%)	278 (98%)	6 (2%)	53	59
1	H	286/295 (97%)	279 (98%)	7 (2%)	49	53
All	All	2283/2360 (97%)	2247 (98%)	36 (2%)	65	69

All (36) residues with a non-rotameric sidechain are listed below:

Mol	Chain	Res	Type
1	A	16	ARG
1	A	140	HIS
1	A	204	LYS
1	A	232	LYS
1	A	328	HIS
1	B	16	ARG
1	B	140	HIS
1	C	16	ARG
1	C	133[A]	GLN
1	C	133[B]	GLN
1	C	140	HIS
1	D	16	ARG
1	D	140	HIS
1	D	232	LYS
1	D	304	LYS
1	E	16	ARG
1	E	140	HIS
1	E	304	LYS
1	E	308	ARG
1	E	313	PRO
1	F	16	ARG
1	F	140	HIS
1	F	232	LYS
1	G	16	ARG
1	G	140	HIS
1	G	204	LYS
1	G	237	LYS
1	G	303	ASP

Continued on next page...

Continued from previous page...

Mol	Chain	Res	Type
1	G	305	ASP
1	H	16	ARG
1	H	47	ASN
1	H	140	HIS
1	H	156	LYS
1	H	204[A]	LYS
1	H	204[B]	LYS
1	H	305	ASP

Sometimes sidechains can be flipped to improve hydrogen bonding and reduce clashes. All (7) such sidechains are listed below:

Mol	Chain	Res	Type
1	A	247	GLN
1	B	187	ASN
1	B	247	GLN
1	C	187	ASN
1	D	194	GLN
1	H	247	GLN
1	H	321	ASN

5.3.3 RNA [i](#)

There are no RNA molecules in this entry.

5.4 Non-standard residues in protein, DNA, RNA chains [i](#)

8 non-standard protein/DNA/RNA residues are modelled in this entry.

In the following table, the Counts columns list the number of bonds (or angles) for which Mogul statistics could be retrieved, the number of bonds (or angles) that are observed in the model and the number of bonds (or angles) that are defined in the Chemical Component Dictionary. The Link column lists molecule types, if any, to which the group is linked. The Z score for a bond length (or angle) is the number of standard deviations the observed value is removed from the expected value. A bond length (or angle) with $|Z| > 2$ is considered an outlier worth inspection. RMSZ is the root-mean-square of all Z scores of the bond lengths (or angles).

Mol	Type	Chain	Res	Link	Bond lengths			Bond angles		
					Counts	RMSZ	$\# Z > 2$	Counts	RMSZ	$\# Z > 2$
1	OCS	G	2	1	7,8,9	2.68	2 (28%)	6,11,13	1.92	2 (33%)
1	OCS	C	2	1	7,8,9	2.68	2 (28%)	6,11,13	2.04	3 (50%)
1	OCS	B	2	1	7,8,9	2.09	2 (28%)	6,11,13	1.91	2 (33%)

Mol	Type	Chain	Res	Link	Bond lengths			Bond angles		
					Counts	RMSZ	# Z > 2	Counts	RMSZ	# Z > 2
1	OCS	A	2	1	7,8,9	2.08	2 (28%)	6,11,13	2.03	3 (50%)
1	OCS	E	2	1	7,8,9	2.65	2 (28%)	6,11,13	1.97	2 (33%)
1	OCS	H	2	1	7,8,9	2.69	2 (28%)	6,11,13	1.84	2 (33%)
1	OCS	F	2	1	7,8,9	2.71	2 (28%)	6,11,13	1.90	2 (33%)
1	OCS	D	2	1	7,8,9	2.08	2 (28%)	6,11,13	1.95	3 (50%)

In the following table, the Chirals column lists the number of chiral outliers, the number of chiral centers analysed, the number of these observed in the model and the number defined in the Chemical Component Dictionary. Similar counts are reported in the Torsion and Rings columns. '-' means no outliers of that kind were identified.

Mol	Type	Chain	Res	Link	Chirals	Torsions	Rings
1	OCS	G	2	1	-	0/4/7/9	-
1	OCS	C	2	1	-	0/4/7/9	-
1	OCS	B	2	1	-	0/4/7/9	-
1	OCS	A	2	1	-	0/4/7/9	-
1	OCS	E	2	1	-	0/4/7/9	-
1	OCS	H	2	1	-	0/4/7/9	-
1	OCS	F	2	1	-	0/4/7/9	-
1	OCS	D	2	1	-	0/4/7/9	-

All (16) bond length outliers are listed below:

Mol	Chain	Res	Type	Atoms	Z	Observed(Å)	Ideal(Å)
1	F	2	OCS	OD1-SG	6.37	1.63	1.45
1	C	2	OCS	OD3-SG	6.34	1.63	1.45
1	H	2	OCS	OD1-SG	6.32	1.63	1.45
1	G	2	OCS	OD3-SG	6.31	1.63	1.45
1	E	2	OCS	OD3-SG	6.22	1.63	1.45
1	A	2	OCS	OD2-SG	4.62	1.64	1.47
1	D	2	OCS	OD2-SG	4.57	1.63	1.47
1	B	2	OCS	OD2-SG	4.55	1.63	1.47
1	B	2	OCS	CB-SG	-2.87	1.66	1.77
1	H	2	OCS	CB-SG	-2.86	1.66	1.77
1	F	2	OCS	CB-SG	-2.85	1.66	1.77
1	D	2	OCS	CB-SG	-2.82	1.67	1.77
1	E	2	OCS	CB-SG	-2.82	1.67	1.77
1	G	2	OCS	CB-SG	-2.80	1.67	1.77
1	C	2	OCS	CB-SG	-2.75	1.67	1.77
1	A	2	OCS	CB-SG	-2.73	1.67	1.77

All (19) bond angle outliers are listed below:

Mol	Chain	Res	Type	Atoms	Z	Observed(°)	Ideal(°)
1	A	2	OCS	OD2-SG-CB	3.20	110.85	105.74
1	F	2	OCS	OD1-SG-CB	3.20	110.75	106.94
1	B	2	OCS	OD3-SG-CB	3.00	110.51	106.94
1	B	2	OCS	OD2-SG-CB	2.90	110.37	105.74
1	G	2	OCS	OD2-SG-CB	2.89	110.35	105.74
1	E	2	OCS	OD2-SG-CB	2.88	110.33	105.74
1	C	2	OCS	OD3-SG-CB	2.86	110.34	106.94
1	H	2	OCS	OD2-SG-CB	2.86	110.30	105.74
1	C	2	OCS	OD2-SG-CB	2.83	110.25	105.74
1	E	2	OCS	OD3-SG-CB	2.83	110.30	106.94
1	D	2	OCS	OD3-SG-CB	2.80	110.27	106.94
1	H	2	OCS	OD1-SG-CB	2.68	110.12	106.94
1	F	2	OCS	OD2-SG-CB	2.57	109.84	105.74
1	G	2	OCS	OD3-SG-CB	2.51	109.92	106.94
1	D	2	OCS	OD2-SG-CB	2.43	109.61	105.74
1	A	2	OCS	OD1-SG-CB	2.39	109.78	106.94
1	D	2	OCS	OD1-SG-CB	2.33	109.71	106.94
1	C	2	OCS	OD1-SG-CB	2.17	109.51	106.94
1	A	2	OCS	OD3-SG-CB	2.15	109.50	106.94

There are no chirality outliers.

There are no torsion outliers.

There are no ring outliers.

No monomer is involved in short contacts.

5.5 Carbohydrates [i](#)

There are no monosaccharides in this entry.

5.6 Ligand geometry [i](#)

16 ligands are modelled in this entry.

In the following table, the Counts columns list the number of bonds (or angles) for which Mogul statistics could be retrieved, the number of bonds (or angles) that are observed in the model and the number of bonds (or angles) that are defined in the Chemical Component Dictionary. The Link column lists molecule types, if any, to which the group is linked. The Z score for a bond length (or angle) is the number of standard deviations the observed value is removed from the expected value. A bond length (or angle) with $|Z| > 2$ is considered an outlier worth inspection. RMSZ is the root-mean-square of all Z scores of the bond lengths (or angles).

Mol	Type	Chain	Res	Link	Bond lengths			Bond angles		
					Counts	RMSZ	# Z > 2	Counts	RMSZ	# Z > 2
4	GOL	B	402	-	5,5,5	0.54	0	5,5,5	0.71	0
5	PO4	B	403	-	4,4,4	0.94	0	6,6,6	1.34	1 (16%)
3	CHD	D	401	-	32,32,32	0.85	1 (3%)	51,51,51	1.70	8 (15%)
2	GCH	F	401	-	36,36,36	0.87	1 (2%)	56,56,56	1.91	11 (19%)
6	EDO	G	402	-	3,3,3	0.60	0	2,2,2	0.55	0
7	PEG	F	402	-	6,6,6	0.64	0	5,5,5	0.79	0
6	EDO	H	402	-	3,3,3	0.40	0	2,2,2	0.35	0
4	GOL	E	402	-	5,5,5	0.54	0	5,5,5	0.58	0
3	CHD	E	401	-	32,32,32	0.98	2 (6%)	51,51,51	1.75	14 (27%)
6	EDO	D	402	-	3,3,3	0.52	0	2,2,2	0.57	0
2	GCH	A	402	-	36,36,36	0.75	0	56,56,56	1.46	9 (16%)
3	CHD	H	401	-	32,32,32	0.80	0	51,51,51	1.44	9 (17%)
3	CHD	B	401	-	32,32,32	0.96	1 (3%)	51,51,51	1.88	11 (21%)
2	GCH	A	401	-	36,36,36	0.93	1 (2%)	56,56,56	1.38	10 (17%)
3	CHD	G	401	-	32,32,32	0.84	0	51,51,51	1.79	10 (19%)
3	CHD	C	401	-	32,32,32	0.85	1 (3%)	51,51,51	1.86	12 (23%)

In the following table, the Chirals column lists the number of chiral outliers, the number of chiral centers analysed, the number of these observed in the model and the number defined in the Chemical Component Dictionary. Similar counts are reported in the Torsion and Rings columns. '-' means no outliers of that kind were identified.

Mol	Type	Chain	Res	Link	Chirals	Torsions	Rings
4	GOL	B	402	-	-	0/4/4/4	-
6	EDO	G	402	-	-	1/1/1/1	-
3	CHD	D	401	-	-	5/9/74/74	0/4/4/4
2	GCH	F	401	-	-	6/14/79/79	0/4/4/4
7	PEG	F	402	-	-	4/4/4/4	-
6	EDO	H	402	-	-	0/1/1/1	-
4	GOL	E	402	-	-	3/4/4/4	-
3	CHD	E	401	-	-	2/9/74/74	0/4/4/4
6	EDO	D	402	-	-	0/1/1/1	-
2	GCH	A	402	-	-	0/14/79/79	0/4/4/4
3	CHD	H	401	-	-	1/9/74/74	0/4/4/4
3	CHD	B	401	-	-	6/9/74/74	0/4/4/4
2	GCH	A	401	-	-	5/14/79/79	0/4/4/4
3	CHD	G	401	-	-	5/9/74/74	0/4/4/4
3	CHD	C	401	-	-	4/9/74/74	0/4/4/4

All (7) bond length outliers are listed below:

Mol	Chain	Res	Type	Atoms	Z	Observed(Å)	Ideal(Å)
2	F	401	GCH	C3-C2	-2.58	1.51	1.55
3	C	401	CHD	C10-C9	-2.52	1.51	1.56
3	E	401	CHD	C20-C17	2.45	1.58	1.54
2	A	401	GCH	C18-C17	2.39	1.58	1.54
3	B	401	CHD	C13-C14	-2.12	1.51	1.55
3	D	401	CHD	O25-C24	2.10	1.29	1.22
3	E	401	CHD	C13-C12	2.05	1.57	1.54

All (95) bond angle outliers are listed below:

Mol	Chain	Res	Type	Atoms	Z	Observed(°)	Ideal(°)
2	F	401	GCH	C13-C17-C18	-7.98	109.97	119.50
3	C	401	CHD	C14-C13-C12	6.84	113.77	107.40
3	G	401	CHD	C16-C17-C20	6.34	121.96	112.15
3	D	401	CHD	C13-C17-C20	-6.17	112.13	119.50
3	B	401	CHD	C13-C17-C20	-5.31	113.16	119.50
3	D	401	CHD	C16-C17-C20	4.65	119.34	112.15
3	G	401	CHD	C13-C17-C20	-4.64	113.96	119.50
3	B	401	CHD	C10-C9-C8	4.48	116.63	111.82
2	F	401	GCH	C11-C10-C3	-4.40	109.19	113.73
2	F	401	GCH	C16-C17-C18	4.08	118.46	112.15
3	B	401	CHD	C22-C23-C24	4.03	123.19	112.51
3	C	401	CHD	C11-C9-C10	-3.95	109.66	113.73
3	C	401	CHD	C17-C13-C14	-3.85	96.21	100.09
3	B	401	CHD	C16-C17-C20	3.74	117.93	112.15
3	C	401	CHD	C21-C20-C17	3.72	118.62	112.92
3	G	401	CHD	C17-C13-C12	-3.63	114.35	117.67
2	A	401	GCH	C19-C18-C17	3.63	118.48	112.92
3	B	401	CHD	C22-C20-C17	3.61	117.75	110.28
2	A	402	GCH	C1-C-C5	3.52	114.75	110.55
3	B	401	CHD	C17-C13-C14	3.48	103.61	100.09
3	E	401	CHD	C6-C5-C4	-3.45	107.22	111.19
3	E	401	CHD	C21-C20-C22	-3.45	104.96	110.36
2	A	402	GCH	C20-C21-C22	-3.43	105.38	113.04
3	B	401	CHD	C15-C14-C8	3.34	123.01	118.33
3	E	401	CHD	C5-C4-C3	3.31	117.61	112.76
3	E	401	CHD	C14-C13-C12	3.27	110.44	107.40
3	E	401	CHD	C15-C14-C13	3.22	106.71	103.55
2	F	401	GCH	C3-C10-C9	3.21	115.27	111.82
3	H	401	CHD	C19-C10-C1	-3.19	103.12	108.26
2	A	402	GCH	C23-C13-C12	3.16	112.29	109.07
3	C	401	CHD	C21-C20-C22	-3.12	105.48	110.36

Continued on next page...

Continued from previous page...

Mol	Chain	Res	Type	Atoms	Z	Observed(°)	Ideal(°)
2	F	401	GCH	O4-C24-CA	3.11	123.53	112.74
3	D	401	CHD	C11-C9-C10	-3.06	110.58	113.73
3	B	401	CHD	C19-C10-C1	-3.05	103.34	108.26
3	G	401	CHD	C19-C10-C1	-3.04	103.36	108.26
2	A	402	GCH	C4-C5-C	-3.03	106.57	110.47
2	A	402	GCH	C21-C20-C18	2.98	119.97	114.52
3	E	401	CHD	C16-C15-C14	-2.98	99.22	105.13
3	E	401	CHD	C9-C10-C5	2.96	112.73	108.58
3	E	401	CHD	C6-C7-C8	2.87	114.55	111.48
3	G	401	CHD	C14-C13-C12	2.83	110.04	107.40
3	E	401	CHD	C21-C20-C17	2.81	117.23	112.92
2	F	401	GCH	C14-C13-C12	2.78	109.99	107.40
2	A	401	GCH	C20-C18-C17	2.73	115.93	110.28
3	H	401	CHD	C13-C17-C20	-2.73	116.24	119.50
3	E	401	CHD	C15-C16-C17	2.68	110.45	105.13
2	F	401	GCH	C20-C18-C17	2.64	115.73	110.28
2	A	401	GCH	C20-C21-C22	2.61	118.86	113.04
3	E	401	CHD	C11-C12-C13	2.59	113.91	111.24
2	A	402	GCH	O4-C24-CA	2.57	121.66	112.74
3	C	401	CHD	C18-C13-C12	-2.54	106.48	109.07
3	G	401	CHD	C11-C9-C10	-2.50	111.15	113.73
3	G	401	CHD	C1-C10-C9	2.49	115.26	111.35
3	D	401	CHD	C19-C10-C9	2.46	114.58	111.18
3	H	401	CHD	C9-C11-C12	-2.45	111.06	114.30
2	A	401	GCH	O3-C12-C11	-2.45	104.14	109.12
2	F	401	GCH	C13-C14-C9	-2.43	111.63	114.74
2	A	401	GCH	C21-C20-C18	-2.42	110.10	114.52
3	H	401	CHD	C18-C13-C12	2.37	111.48	109.07
3	E	401	CHD	C9-C8-C7	2.36	114.69	111.88
3	D	401	CHD	C6-C5-C4	-2.35	108.48	111.19
3	G	401	CHD	C10-C9-C8	2.35	114.34	111.82
3	C	401	CHD	O12-C12-C13	2.35	115.00	111.03
2	A	401	GCH	O4-C24-CA	2.34	120.86	112.74
2	A	401	GCH	C17-C13-C12	2.34	119.80	117.67
3	D	401	CHD	C9-C8-C7	2.33	114.66	111.88
2	F	401	GCH	C21-C20-C18	-2.31	110.29	114.52
3	D	401	CHD	C21-C20-C22	2.31	113.98	110.36
3	B	401	CHD	C11-C12-C13	2.29	113.60	111.24
3	H	401	CHD	C9-C8-C7	2.29	114.61	111.88
3	E	401	CHD	C9-C11-C12	-2.27	111.30	114.30
3	H	401	CHD	C10-C9-C8	2.27	114.26	111.82
2	A	401	GCH	C19-C18-C20	-2.22	106.88	110.36

Continued on next page...

Continued from previous page...

Mol	Chain	Res	Type	Atoms	Z	Observed(°)	Ideal(°)
3	G	401	CHD	C4-C3-C2	-2.22	107.91	110.55
3	C	401	CHD	C14-C8-C9	-2.20	106.69	109.71
3	B	401	CHD	C17-C13-C12	-2.20	115.66	117.67
2	A	402	GCH	C19-C18-C20	-2.19	106.93	110.36
3	H	401	CHD	C4-C3-C2	2.17	113.14	110.55
3	E	401	CHD	C17-C13-C12	2.16	119.64	117.67
2	A	401	GCH	O1-C8-C9	2.13	114.19	109.43
2	F	401	GCH	C20-C21-C22	2.13	117.79	113.04
2	F	401	GCH	O2-C22-C21	-2.12	118.14	122.02
2	A	402	GCH	O2-C22-C21	-2.12	118.14	122.02
3	C	401	CHD	O7-C7-C8	2.10	114.12	109.43
2	A	401	GCH	C11-C12-C13	2.10	113.40	111.24
3	C	401	CHD	C22-C23-C24	-2.10	106.94	112.51
3	C	401	CHD	C9-C10-C5	2.07	111.49	108.58
2	A	402	GCH	C7-C2-C1	-2.06	108.81	111.19
3	B	401	CHD	O7-C7-C8	2.06	114.02	109.43
3	D	401	CHD	C21-C20-C17	-2.06	109.77	112.92
5	B	403	PO4	O2-P-O1	-2.05	103.41	110.89
3	H	401	CHD	C11-C9-C10	-2.03	111.63	113.73
3	C	401	CHD	C16-C17-C20	2.03	115.28	112.15
3	G	401	CHD	O12-C12-C13	-2.02	107.61	111.03
3	H	401	CHD	C15-C14-C13	2.01	105.53	103.55

There are no chirality outliers.

All (42) torsion outliers are listed below:

Mol	Chain	Res	Type	Atoms
3	C	401	CHD	C20-C22-C23-C24
4	E	402	GOL	C1-C2-C3-O3
3	B	401	CHD	C17-C20-C22-C23
2	A	401	GCH	C13-C17-C18-C20
2	F	401	GCH	C17-C18-C20-C21
7	F	402	PEG	O1-C1-C2-O2
2	A	401	GCH	C16-C17-C18-C20
2	A	401	GCH	C16-C17-C18-C19
3	G	401	CHD	C13-C17-C20-C22
3	B	401	CHD	C21-C20-C22-C23
3	D	401	CHD	C13-C17-C20-C22
3	G	401	CHD	C16-C17-C20-C21
3	H	401	CHD	C20-C22-C23-C24
3	G	401	CHD	C16-C17-C20-C22
3	G	401	CHD	C13-C17-C20-C21

Continued on next page...

Continued from previous page...

Mol	Chain	Res	Type	Atoms
7	F	402	PEG	O2-C3-C4-O4
3	D	401	CHD	C16-C17-C20-C22
4	E	402	GOL	O2-C2-C3-O3
2	F	401	GCH	C18-C20-C21-C22
2	A	401	GCH	C19-C18-C20-C21
3	D	401	CHD	C13-C17-C20-C21
2	F	401	GCH	C13-C17-C18-C20
7	F	402	PEG	C1-C2-O2-C3
3	D	401	CHD	C16-C17-C20-C21
2	F	401	GCH	C16-C17-C18-C20
7	F	402	PEG	C4-C3-O2-C2
6	G	402	EDO	O1-C1-C2-O2
2	F	401	GCH	C20-C21-C22-O2
3	C	401	CHD	C17-C20-C22-C23
3	C	401	CHD	C22-C23-C24-O26
3	C	401	CHD	C22-C23-C24-O25
3	B	401	CHD	C22-C23-C24-O25
3	E	401	CHD	C22-C23-C24-O25
2	A	401	GCH	C13-C17-C18-C19
3	E	401	CHD	C22-C23-C24-O26
3	B	401	CHD	C22-C23-C24-O26
2	F	401	GCH	C20-C21-C22-N
4	E	402	GOL	O1-C1-C2-O2
3	B	401	CHD	C16-C17-C20-C22
3	G	401	CHD	C20-C22-C23-C24
3	D	401	CHD	C20-C22-C23-C24
3	B	401	CHD	C13-C17-C20-C22

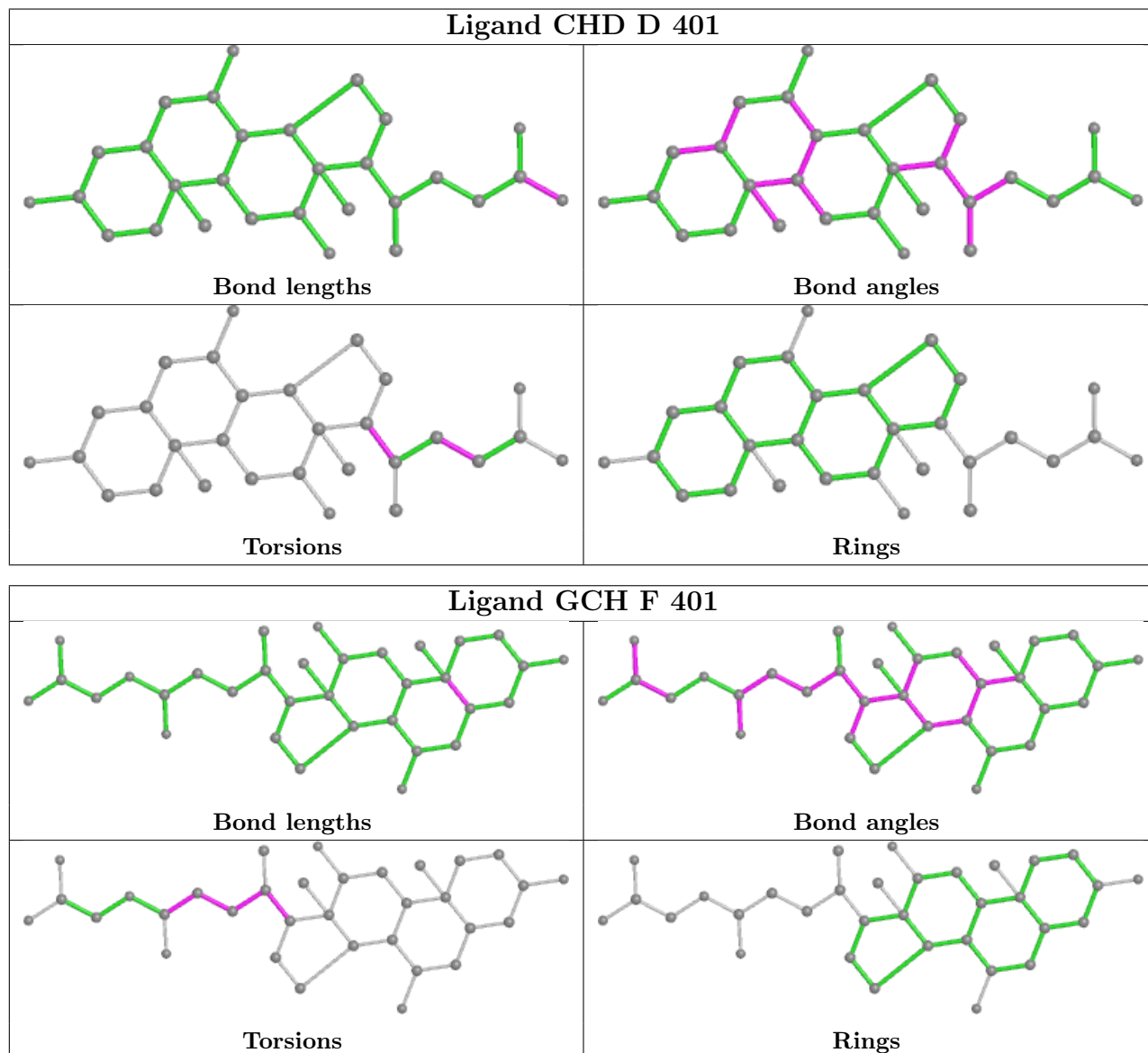
There are no ring outliers.

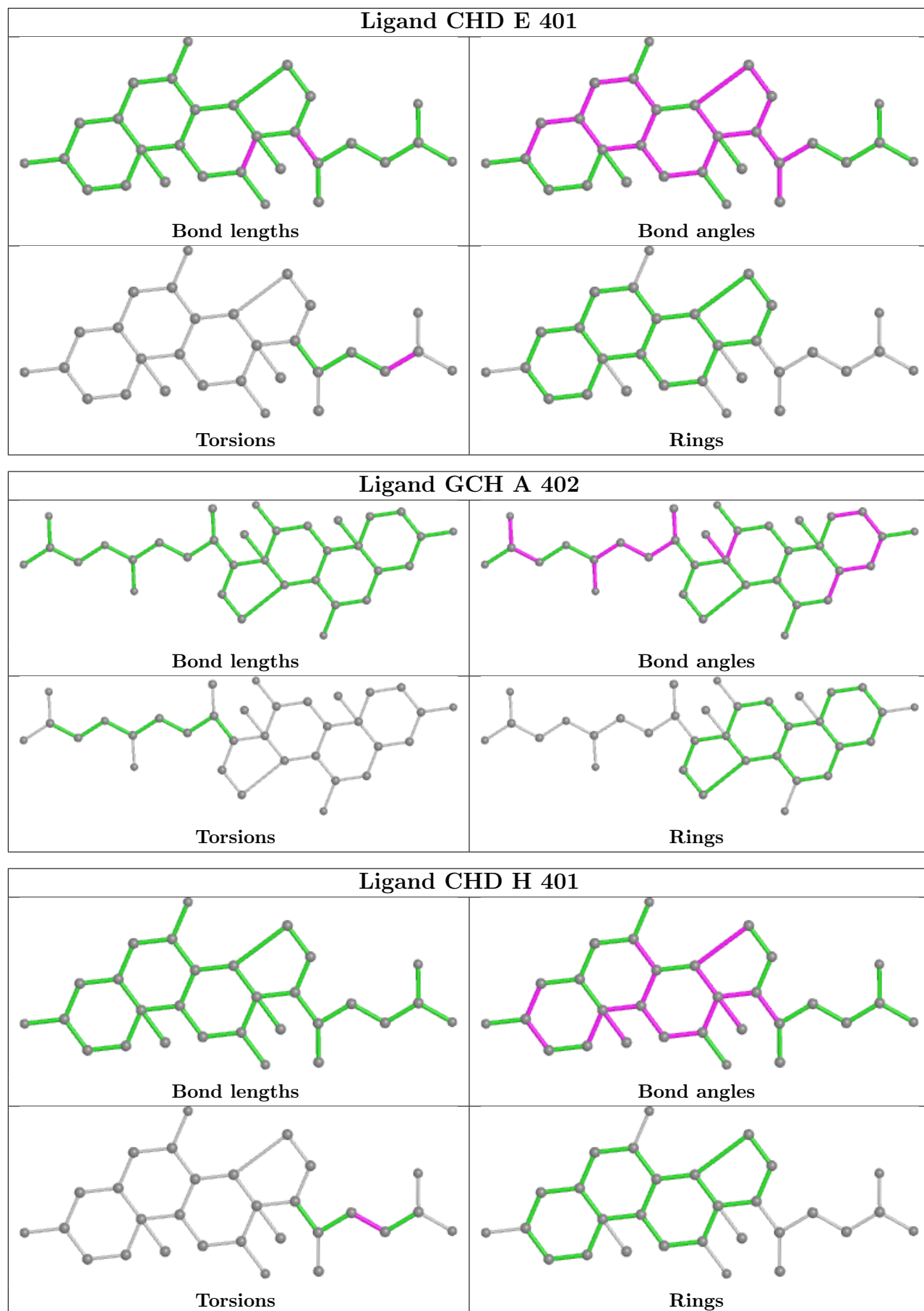
7 monomers are involved in 14 short contacts:

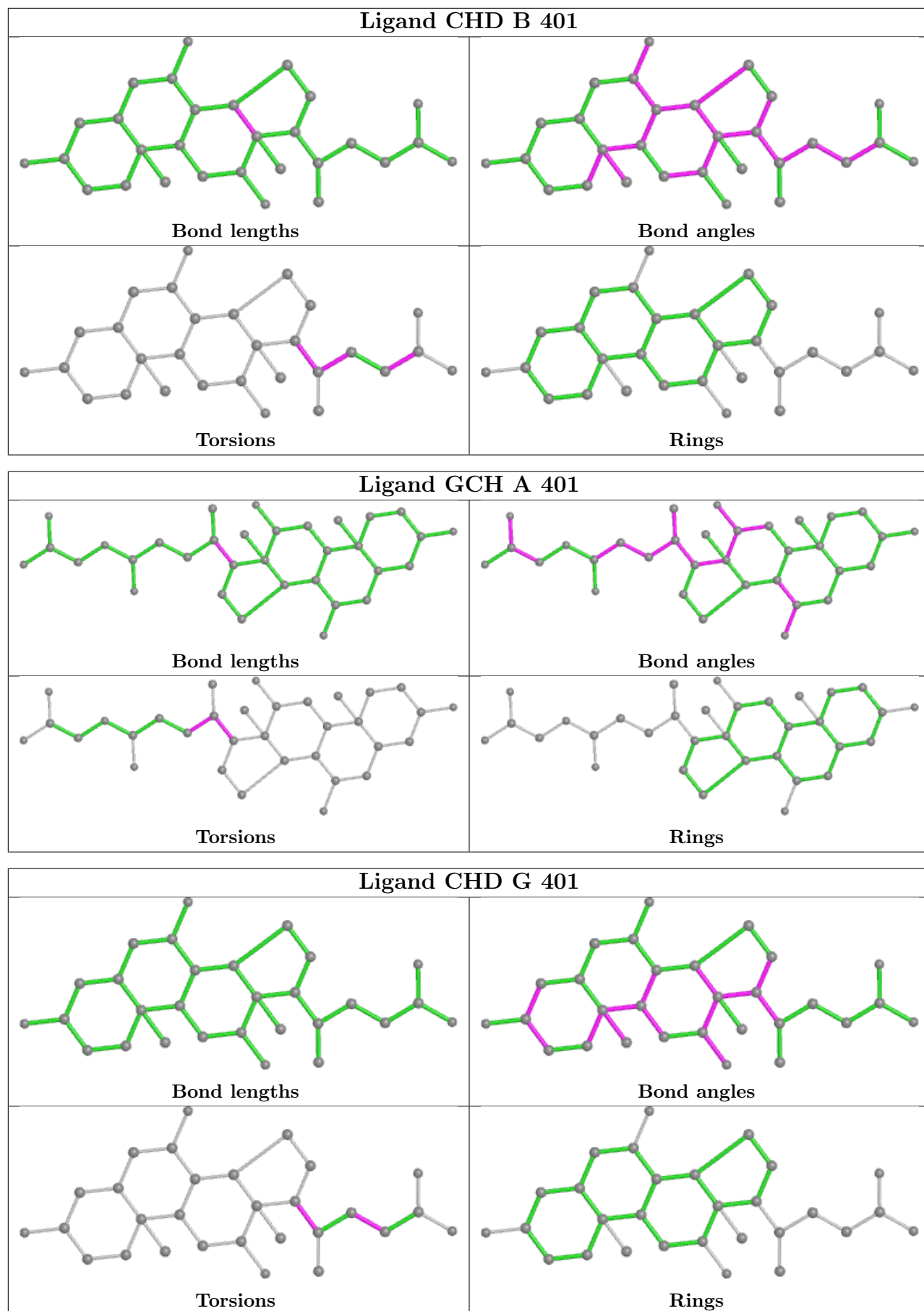
Mol	Chain	Res	Type	Clashes	Symm-Clashes
3	D	401	CHD	2	0
2	F	401	GCH	3	0
7	F	402	PEG	2	0
3	H	401	CHD	1	0
3	B	401	CHD	4	0
3	G	401	CHD	1	0
3	C	401	CHD	1	0

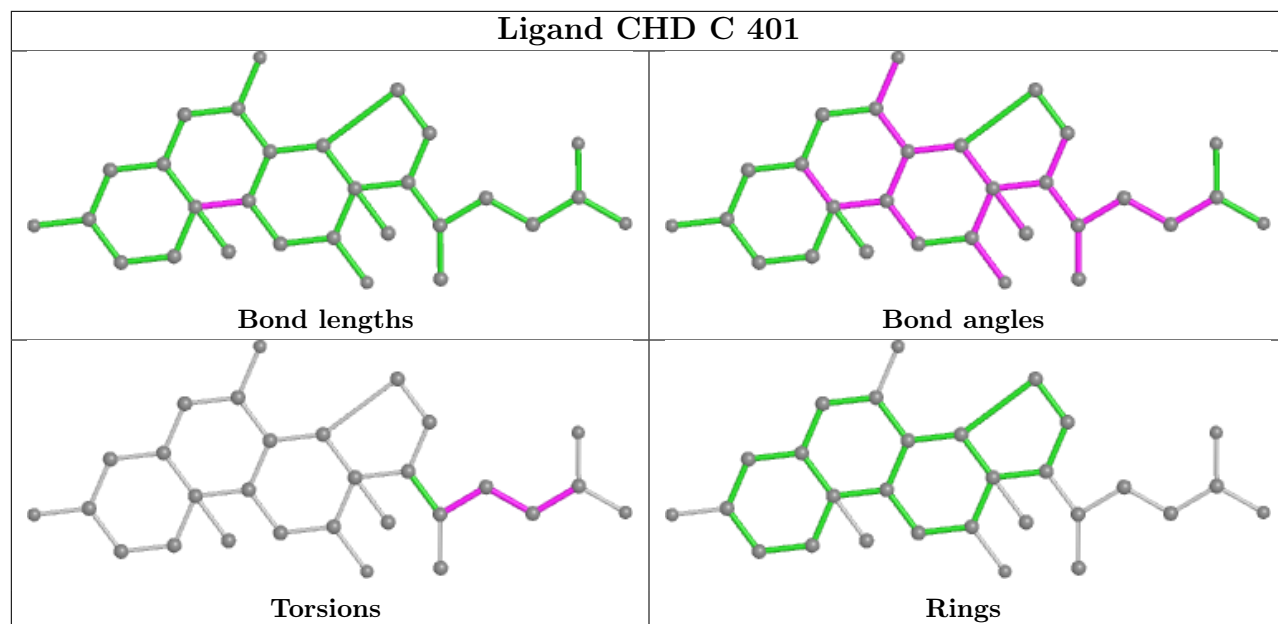
The following is a two-dimensional graphical depiction of Mogul quality analysis of bond lengths, bond angles, torsion angles, and ring geometry for all instances of the Ligand of Interest. In

addition, ligands with molecular weight > 250 and outliers as shown on the validation Tables will also be included. For torsion angles, if less than 5% of the Mogul distribution of torsion angles is within 10 degrees of the torsion angle in question, then that torsion angle is considered an outlier. Any bond that is central to one or more torsion angles identified as an outlier by Mogul will be highlighted in the graph. For rings, the root-mean-square deviation (RMSD) between the ring in question and similar rings identified by Mogul is calculated over all ring torsion angles. If the average RMSD is greater than 60 degrees and the minimal RMSD between the ring in question and any Mogul-identified rings is also greater than 60 degrees, then that ring is considered an outlier. The outliers are highlighted in purple. The color gray indicates Mogul did not find sufficient equivalents in the CSD to analyse the geometry.









5.7 Other polymers [i](#)

There are no such residues in this entry.

5.8 Polymer linkage issues [i](#)

There are no chain breaks in this entry.

6 Fit of model and data

6.1 Protein, DNA and RNA chains

In the following table, the column labelled ‘#RSRZ > 2’ contains the number (and percentage) of RSRZ outliers, followed by percent RSRZ outliers for the chain as percentile scores relative to all X-ray entries and entries of similar resolution. The OWAB column contains the minimum, median, 95th percentile and maximum values of the occupancy-weighted average B-factor per residue. The column labelled ‘Q < 0.9’ lists the number of (and percentage) of residues with an average occupancy less than 0.9.

Mol	Chain	Analysed	<RSRZ>	#RSRZ>2	OWAB(Å ²)	Q<0.9
1	A	326/333 (97%)	-0.11	7 (2%) 63 68	14, 21, 37, 67	0
1	B	322/333 (96%)	0.12	15 (4%) 31 37	16, 24, 42, 90	0
1	C	321/333 (96%)	0.13	14 (4%) 34 40	17, 27, 48, 76	0
1	D	321/333 (96%)	0.05	12 (3%) 41 48	15, 24, 42, 86	0
1	E	321/333 (96%)	0.06	15 (4%) 31 37	16, 26, 42, 65	0
1	F	321/333 (96%)	-0.02	9 (2%) 53 59	16, 23, 40, 84	0
1	G	321/333 (96%)	0.06	12 (3%) 41 48	18, 27, 44, 94	0
1	H	322/333 (96%)	0.38	30 (9%) 8 11	17, 31, 55, 92	0
All	All	2575/2664 (96%)	0.08	114 (4%) 34 40	14, 25, 45, 94	0

All (114) RSRZ outliers are listed below:

Mol	Chain	Res	Type	RSRZ
1	B	302	LYS	8.9
1	C	302	LYS	8.3
1	D	305	ASP	8.0
1	H	305	ASP	7.8
1	B	305	ASP	7.8
1	H	303	ASP	7.5
1	D	303	ASP	7.4
1	G	302	LYS	7.0
1	G	303	ASP	6.6
1	D	304	LYS	6.3
1	H	304	LYS	5.9
1	C	303	ASP	5.8
1	F	303	ASP	5.6
1	B	304	LYS	5.6
1	A	328	HIS	5.5
1	H	302	LYS	5.5

Continued on next page...

Continued from previous page...

Mol	Chain	Res	Type	RSRZ
1	F	302	LYS	5.3
1	B	303	ASP	5.3
1	F	305	ASP	5.1
1	A	305	ASP	5.1
1	H	306	GLY	4.8
1	G	305	ASP	4.5
1	D	302	LYS	4.5
1	A	303	ASP	4.4
1	F	304	LYS	4.4
1	H	266	SER	4.3
1	C	301	ASN	4.1
1	D	301	ASN	4.0
1	H	308	ARG	3.9
1	A	265	GLU	3.9
1	H	46	LYS	3.9
1	E	302	LYS	3.9
1	H	133	GLN	3.8
1	F	265	GLU	3.8
1	E	303	ASP	3.8
1	A	304	LYS	3.8
1	H	85	TYR	3.8
1	H	93	ASP	3.8
1	C	305	ASP	3.8
1	C	323	LEU	3.7
1	F	323	LEU	3.7
1	H	265	GLU	3.7
1	B	324	ASN	3.6
1	H	307	ASN	3.6
1	H	324	ASN	3.6
1	D	323	LEU	3.5
1	B	133	GLN	3.3
1	A	302	LYS	3.3
1	H	301	ASN	3.3
1	G	304	LYS	3.1
1	G	267	GLY	3.1
1	B	268	LYS	3.0
1	B	103	ILE	3.0
1	B	265	GLU	3.0
1	E	305	ASP	3.0
1	B	76	ALA	2.9
1	H	132	GLU	2.9
1	H	268	LYS	2.9

Continued on next page...

Continued from previous page...

Mol	Chain	Res	Type	RSRZ
1	G	301	ASN	2.8
1	F	266	SER	2.8
1	A	327	ARG	2.8
1	C	103	ILE	2.7
1	C	67	ALA	2.7
1	E	304	LYS	2.7
1	D	265	GLU	2.7
1	D	46	LYS	2.7
1	C	308	ARG	2.6
1	H	323	LEU	2.6
1	C	133[A]	GLN	2.5
1	B	85	TYR	2.5
1	E	68	ILE	2.5
1	H	43	LYS	2.5
1	H	33	ALA	2.5
1	G	92	ASN	2.4
1	D	132	GLU	2.4
1	H	267	GLY	2.4
1	E	134	LEU	2.4
1	E	265	GLU	2.4
1	H	76	ALA	2.4
1	H	239	MET	2.4
1	F	301	ASN	2.4
1	E	315	GLU	2.4
1	B	141	TRP	2.3
1	C	92	ASN	2.3
1	H	128	LEU	2.3
1	E	43	LYS	2.3
1	H	75	MET	2.3
1	H	34	GLU	2.3
1	E	89	ALA	2.2
1	B	132	GLU	2.2
1	G	67	ALA	2.2
1	D	47	ASN	2.2
1	E	301	ASN	2.2
1	D	306	GLY	2.2
1	H	118	ASN	2.2
1	G	266	SER	2.2
1	H	310	VAL	2.2
1	E	75	MET	2.2
1	E	47	ASN	2.1
1	C	46	LYS	2.1

Continued on next page...

Continued from previous page...

Mol	Chain	Res	Type	RSRZ
1	G	103	ILE	2.1
1	C	132	GLU	2.1
1	C	93	ASP	2.1
1	F	306	GLY	2.1
1	E	133	GLN	2.1
1	G	265	GLU	2.1
1	G	22	PHE	2.1
1	B	78	LEU	2.1
1	H	47	ASN	2.1
1	H	92	ASN	2.0
1	D	133	GLN	2.0
1	E	103	ILE	2.0
1	C	304	LYS	2.0
1	B	306	GLY	2.0

6.2 Non-standard residues in protein, DNA, RNA chains [i](#)

In the following table, the Atoms column lists the number of modelled atoms in the group and the number defined in the chemical component dictionary. The B-factors column lists the minimum, median, 95th percentile and maximum values of B factors of atoms in the group. The column labelled 'Q<0.9' lists the number of atoms with occupancy less than 0.9.

Mol	Type	Chain	Res	Atoms	RSCC	RSR	B-factors(Å ²)	Q<0.9
1	OCS	A	2	9/10	0.95	0.12	19,20,26,31	0
1	OCS	F	2	9/10	0.95	0.15	18,23,27,33	0
1	OCS	G	2	9/10	0.95	0.13	21,23,30,30	0
1	OCS	C	2	9/10	0.96	0.11	19,24,31,32	0
1	OCS	E	2	9/10	0.96	0.14	18,24,32,37	0
1	OCS	H	2	9/10	0.96	0.12	20,22,27,35	0
1	OCS	B	2	9/10	0.97	0.13	19,21,30,31	0
1	OCS	D	2	9/10	0.97	0.12	15,22,31,32	0

6.3 Carbohydrates [i](#)

There are no monosaccharides in this entry.

6.4 Ligands [i](#)

In the following table, the Atoms column lists the number of modelled atoms in the group and the number defined in the chemical component dictionary. The B-factors column lists the minimum,

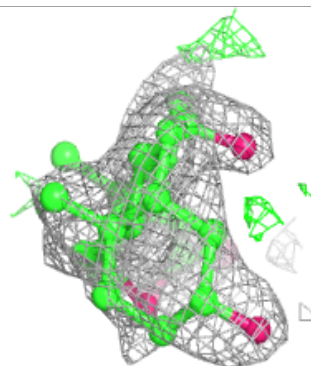
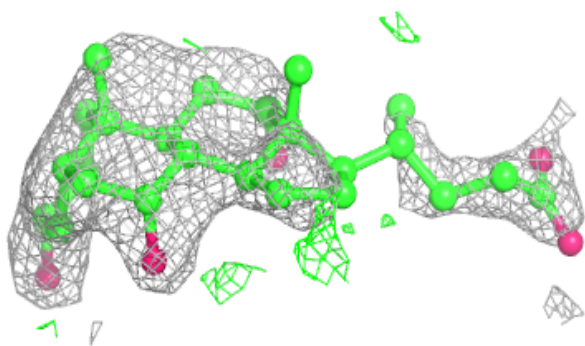
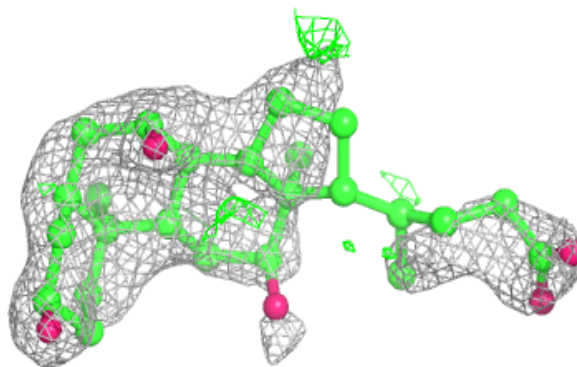
median, 95th percentile and maximum values of B factors of atoms in the group. The column labelled 'Q< 0.9' lists the number of atoms with occupancy less than 0.9.

Mol	Type	Chain	Res	Atoms	RSCC	RSR	B-factors(Å ²)	Q<0.9
3	CHD	C	401	29/29	0.72	0.25	35,49,65,66	29
4	GOL	E	402	6/6	0.77	0.28	51,54,56,56	0
3	CHD	E	401	29/29	0.80	0.17	40,48,60,63	0
5	PO4	B	403	5/5	0.80	0.20	30,30,33,43	5
6	EDO	G	402	4/4	0.80	0.18	51,52,52,55	0
4	GOL	B	402	6/6	0.84	0.22	41,47,50,51	0
2	GCH	A	401	33/33	0.84	0.17	17,21,49,56	0
2	GCH	A	402	33/33	0.87	0.13	21,26,35,38	0
2	GCH	F	401	33/33	0.87	0.16	22,26,47,49	0
3	CHD	G	401	29/29	0.88	0.14	27,29,50,53	29
3	CHD	H	401	29/29	0.88	0.13	34,38,45,46	0
7	PEG	F	402	7/7	0.88	0.12	31,35,42,43	0
3	CHD	B	401	29/29	0.91	0.12	27,31,44,45	0
3	CHD	D	401	29/29	0.91	0.12	21,23,42,43	0
6	EDO	H	402	4/4	0.93	0.09	35,42,42,47	0
6	EDO	D	402	4/4	0.94	0.08	30,31,37,41	0

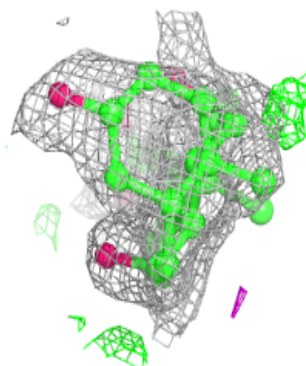
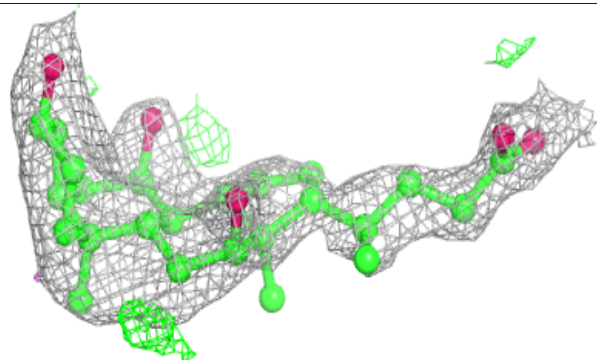
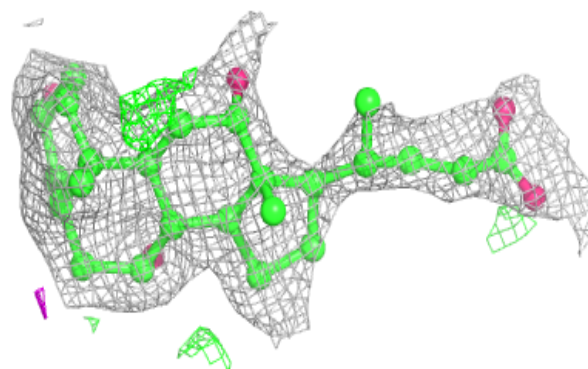
The following is a graphical depiction of the model fit to experimental electron density of all instances of the Ligand of Interest. In addition, ligands with molecular weight > 250 and outliers as shown on the geometry validation Tables will also be included. Each fit is shown from different orientation to approximate a three-dimensional view.

Electron density around CHD C 401:

$2mF_o-DF_c$ (at 0.7 rmsd) in gray
 mF_o-DF_c (at 3 rmsd) in purple (negative)
and green (positive)

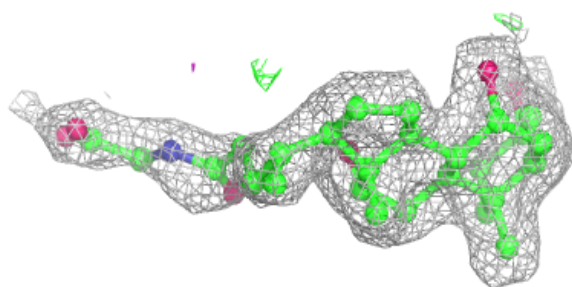
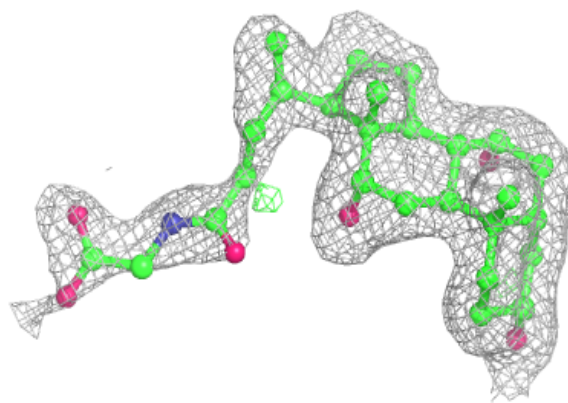
**Electron density around CHD E 401:**

$2mF_o-DF_c$ (at 0.7 rmsd) in gray
 mF_o-DF_c (at 3 rmsd) in purple (negative)
and green (positive)

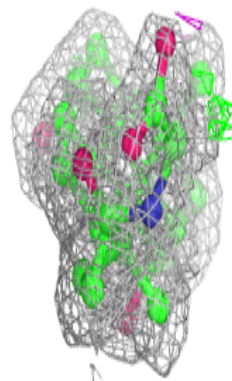
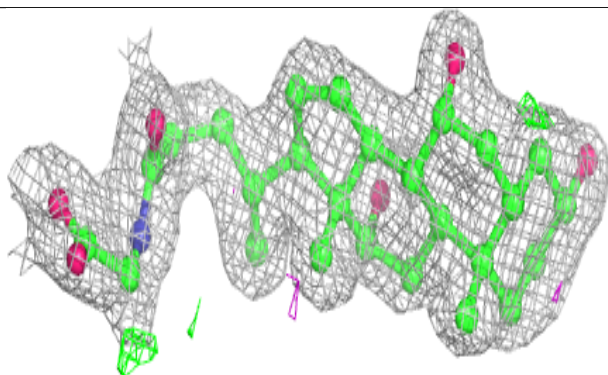
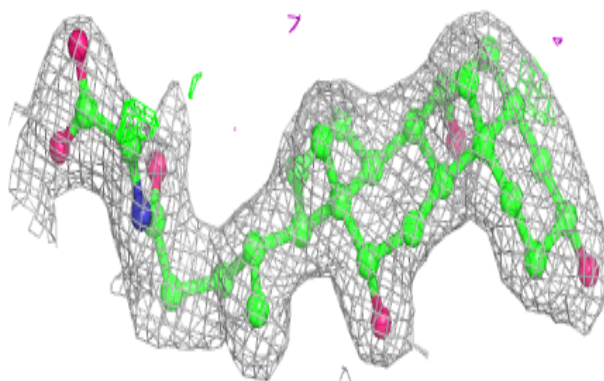


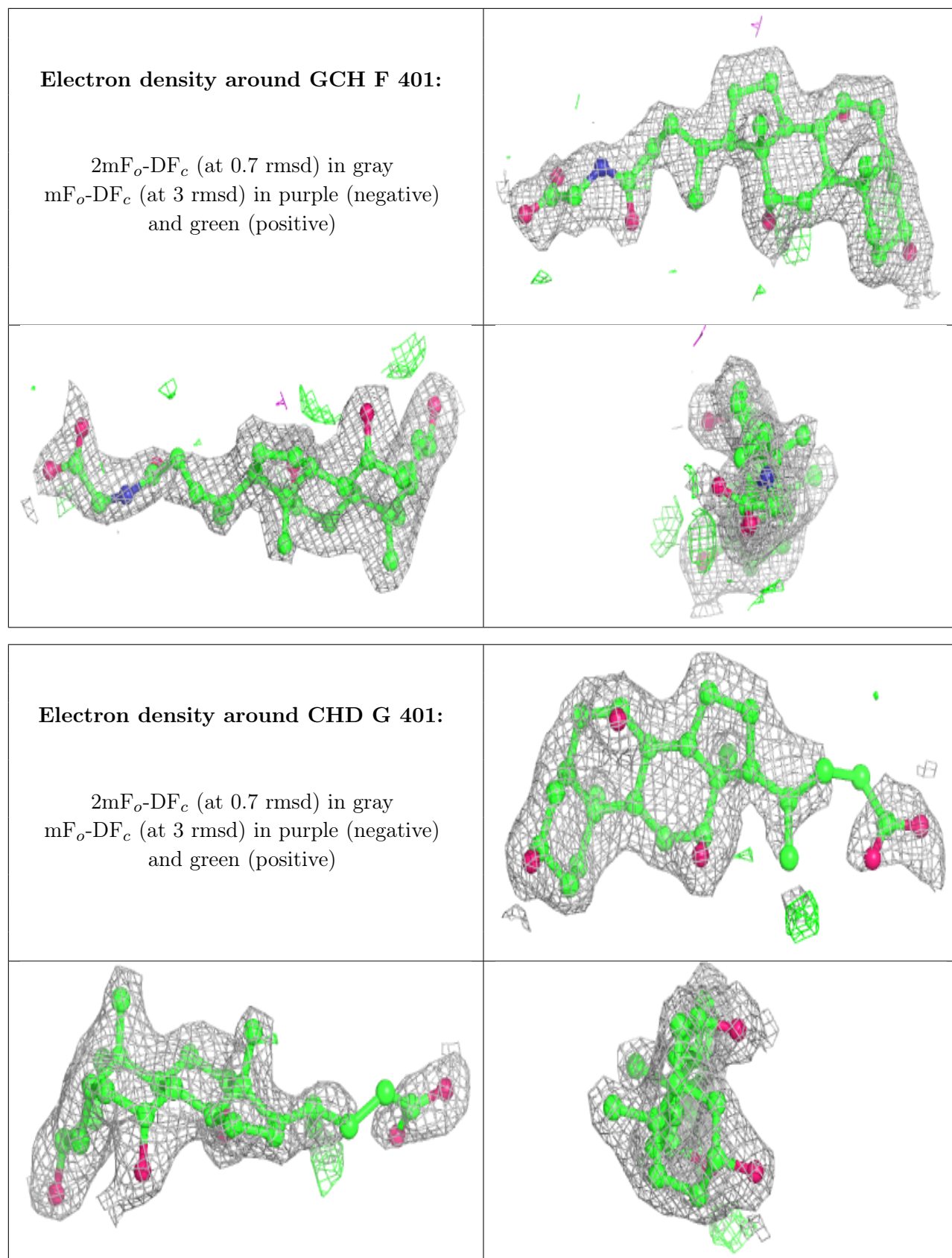
Electron density around GCH A 401:

$2mF_o-DF_c$ (at 0.7 rmsd) in gray
 mF_o-DF_c (at 3 rmsd) in purple (negative)
and green (positive)

**Electron density around GCH A 402:**

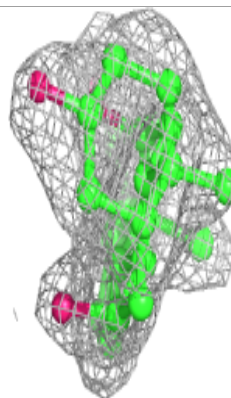
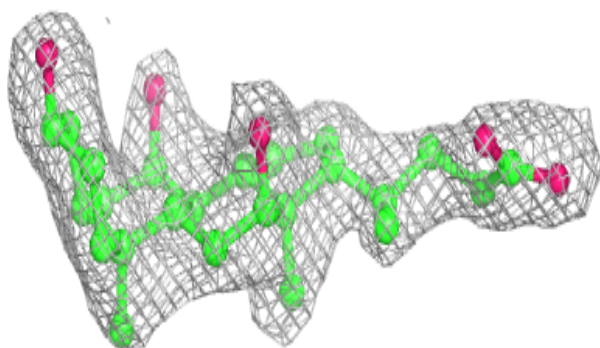
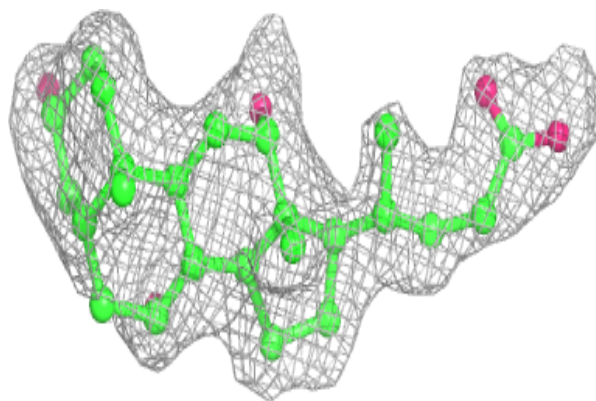
$2mF_o-DF_c$ (at 0.7 rmsd) in gray
 mF_o-DF_c (at 3 rmsd) in purple (negative)
and green (positive)



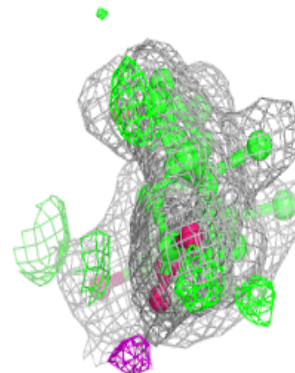
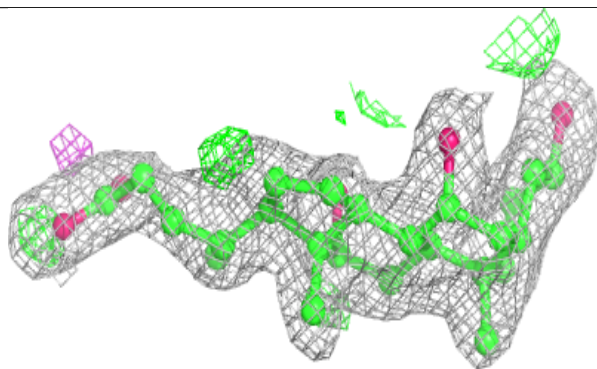
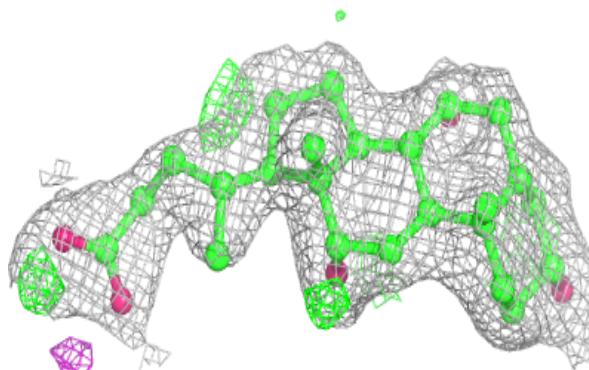


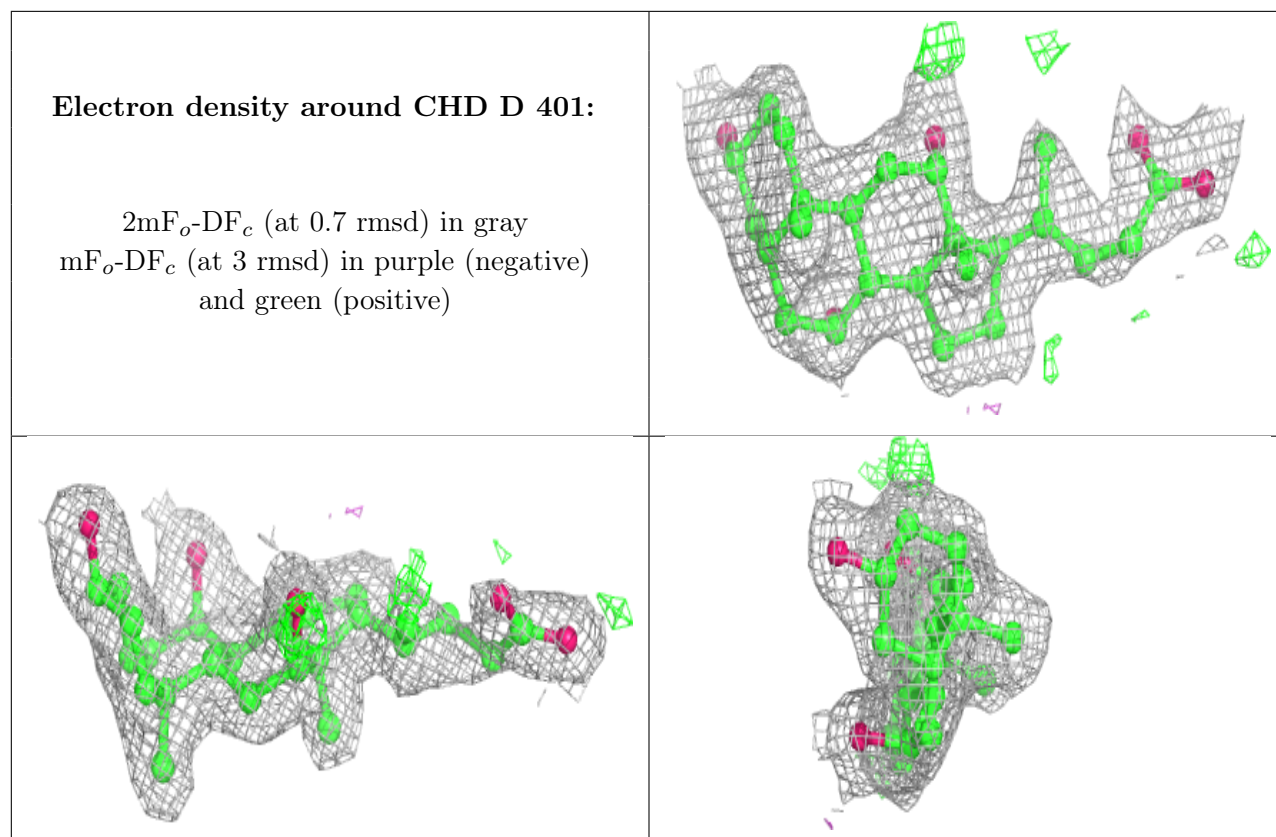
Electron density around CHD H 401:

$2mF_o-DF_c$ (at 0.7 rmsd) in gray
 mF_o-DF_c (at 3 rmsd) in purple (negative)
and green (positive)

**Electron density around CHD B 401:**

$2mF_o-DF_c$ (at 0.7 rmsd) in gray
 mF_o-DF_c (at 3 rmsd) in purple (negative)
and green (positive)





6.5 Other polymers [i](#)

There are no such residues in this entry.