



Full wwPDB X-ray Structure Validation Report ⓘ

Nov 28, 2024 – 12:10 PM JST

PDB ID : 8Y9O
Title : Crystal structure of AtKAI2 in complex with KK181N1
Authors : Wang, J.W.; Miyakawa, T.; Asami, T.
Deposited on : 2024-02-07
Resolution : 1.90 Å(reported)

This is a Full wwPDB X-ray Structure Validation Report for a publicly released PDB entry.

We welcome your comments at validation@mail.wwpdb.org

A user guide is available at

<https://www.wwpdb.org/validation/2017/XrayValidationReportHelp>

with specific help available everywhere you see the ⓘ symbol.

The types of validation reports are described at

<http://www.wwpdb.org/validation/2017/FAQs#types>.

The following versions of software and data (see [references ⓘ](#)) were used in the production of this report:

MolProbity : 4.02b-467
Mogul : 1.8.5 (274361), CSD as541be (2020)
Xtriage (Phenix) : 1.21
EDS : 3.0
buster-report : 1.1.7 (2018)
Percentile statistics : 20231227.v01 (using entries in the PDB archive December 27th 2023)
CCP4 : 9.0.004 (Gargrove)
Density-Fitness : 1.0.11
Ideal geometry (proteins) : Engh & Huber (2001)
Ideal geometry (DNA, RNA) : Parkinson et al. (1996)
Validation Pipeline (wwPDB-VP) : 2.40

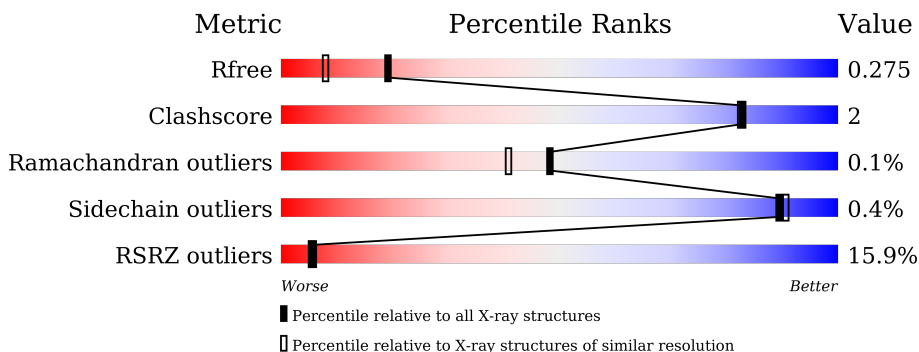
1 Overall quality at a glance

The following experimental techniques were used to determine the structure:

X-RAY DIFFRACTION

The reported resolution of this entry is 1.90 Å.

Percentile scores (ranging between 0-100) for global validation metrics of the entry are shown in the following graphic. The table shows the number of entries on which the scores are based.



Metric	Whole archive (#Entries)	Similar resolution (#Entries, resolution range(Å))
R_{free}	164625	7293 (1.90-1.90)
Clashscore	180529	8090 (1.90-1.90)
Ramachandran outliers	177936	8022 (1.90-1.90)
Sidechain outliers	177891	8022 (1.90-1.90)
RSRZ outliers	164620	7292 (1.90-1.90)

The table below summarises the geometric issues observed across the polymeric chains and their fit to the electron density. The red, orange, yellow and green segments of the lower bar indicate the fraction of residues that contain outliers for ≥ 3 , 2, 1 and 0 types of geometric quality criteria respectively. A grey segment represents the fraction of residues that are not modelled. The numeric value for each fraction is indicated below the corresponding segment, with a dot representing fractions $\leq 5\%$. The upper red bar (where present) indicates the fraction of residues that have poor fit to the electron density. The numeric value is given above the bar.

Mol	Chain	Length	Quality of chain
1	A	277	
1	B	277	
1	C	277	

2 Entry composition

There are 3 unique types of molecules in this entry. The entry contains 6852 atoms, of which 0 are hydrogens and 0 are deuteriums.

In the tables below, the ZeroOcc column contains the number of atoms modelled with zero occupancy, the AltConf column contains the number of residues with at least one atom in alternate conformation and the Trace column contains the number of residues modelled with at most 2 atoms.

- Molecule 1 is a protein called Probable esterase KAI2.

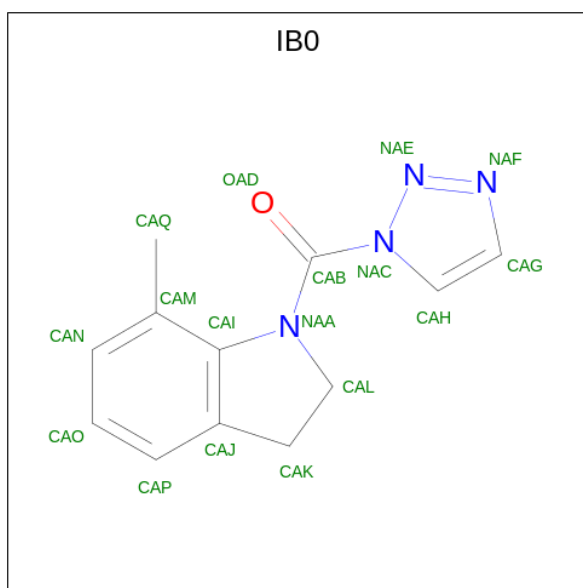
Mol	Chain	Residues	Atoms					ZeroOcc	AltConf	Trace
			Total	C	N	O	S			
1	A	267	2074	1325	344	395	10	0	0	0
1	B	267	2074	1325	344	395	10	0	0	0
1	C	260	2027	1292	337	388	10	0	0	0

There are 21 discrepancies between the modelled and reference sequences:

Chain	Residue	Modelled	Actual	Comment	Reference
A	-6	GLY	-	expression tag	UNP Q9SZU7
A	-5	PRO	-	expression tag	UNP Q9SZU7
A	-4	GLY	-	expression tag	UNP Q9SZU7
A	-3	TYR	-	expression tag	UNP Q9SZU7
A	-2	GLN	-	expression tag	UNP Q9SZU7
A	-1	ASP	-	expression tag	UNP Q9SZU7
A	0	PRO	-	expression tag	UNP Q9SZU7
B	-6	GLY	-	expression tag	UNP Q9SZU7
B	-5	PRO	-	expression tag	UNP Q9SZU7
B	-4	GLY	-	expression tag	UNP Q9SZU7
B	-3	TYR	-	expression tag	UNP Q9SZU7
B	-2	GLN	-	expression tag	UNP Q9SZU7
B	-1	ASP	-	expression tag	UNP Q9SZU7
B	0	PRO	-	expression tag	UNP Q9SZU7
C	-6	GLY	-	expression tag	UNP Q9SZU7
C	-5	PRO	-	expression tag	UNP Q9SZU7
C	-4	GLY	-	expression tag	UNP Q9SZU7
C	-3	TYR	-	expression tag	UNP Q9SZU7
C	-2	GLN	-	expression tag	UNP Q9SZU7
C	-1	ASP	-	expression tag	UNP Q9SZU7
C	0	PRO	-	expression tag	UNP Q9SZU7

- Molecule 2 is (7-methyl-2,3-dihydroindol-1-yl)-(1,2,3-triazol-1-yl)methanone (three-letter

code: IB0) (formula: C₁₂H₁₂N₄O) (labeled as "Ligand of Interest" by depositor).



Mol	Chain	Residues	Atoms			ZeroOcc	AltConf	
2	A	1	Total	C	N	O	0	0
			17	12	4	1		
2	B	1	Total	C	N	O	0	0
			17	12	4	1		
2	C	1	Total	C	N	O	0	0
			17	12	4	1		

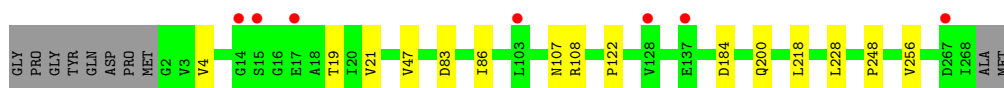
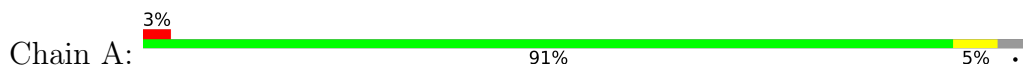
- Molecule 3 is water.

Mol	Chain	Residues	Atoms		ZeroOcc	AltConf
3	A	273	Total	O	0	0
			273	273		
3	B	265	Total	O	0	0
			265	265		
3	C	88	Total	O	0	0
			88	88		

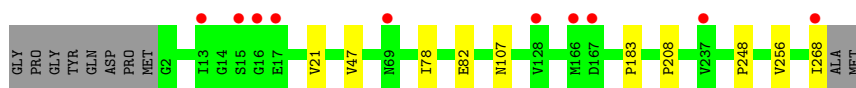
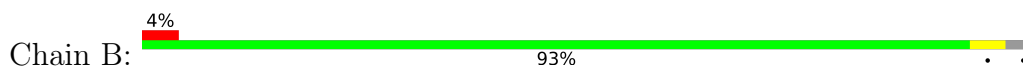
3 Residue-property plots [i](#)

These plots are drawn for all protein, RNA, DNA and oligosaccharide chains in the entry. The first graphic for a chain summarises the proportions of the various outlier classes displayed in the second graphic. The second graphic shows the sequence view annotated by issues in geometry and electron density. Residues are color-coded according to the number of geometric quality criteria for which they contain at least one outlier: green = 0, yellow = 1, orange = 2 and red = 3 or more. A red dot above a residue indicates a poor fit to the electron density ($RSRZ > 2$). Stretches of 2 or more consecutive residues without any outlier are shown as a green connector. Residues present in the sample, but not in the model, are shown in grey.

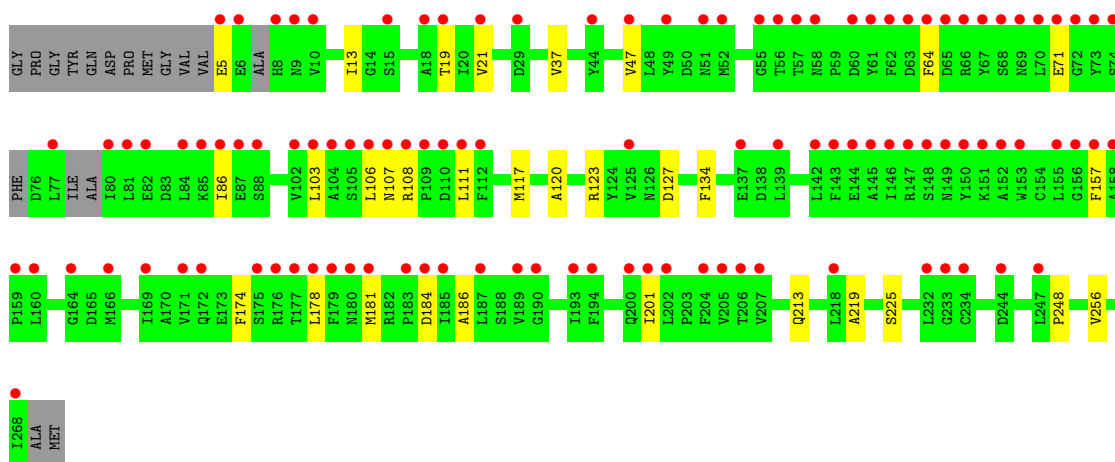
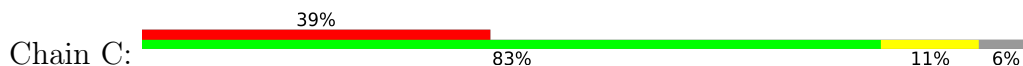
- Molecule 1: Probable esterase KAI2



- Molecule 1: Probable esterase KAI2



- Molecule 1: Probable esterase KAI2



4 Data and refinement statistics

Property	Value	Source
Space group	P 1 21 1	Depositor
Cell constants a, b, c, α , β , γ	85.31Å 64.04Å 114.96Å 90.00° 104.79° 90.00°	Depositor
Resolution (Å)	42.35 – 1.90 42.35 – 1.90	Depositor EDS
% Data completeness (in resolution range)	99.4 (42.35-1.90) 99.3 (42.35-1.90)	Depositor EDS
R_{merge}	(Not available)	Depositor
R_{sym}	0.11	Depositor
$\langle I/\sigma(I) \rangle$ ¹	1.92 (at 1.89Å)	Xtrriage
Refinement program	PHENIX 1.21.5419	Depositor
R, R_{free}	0.239 , 0.275 0.239 , 0.275	Depositor DCC
R_{free} test set	4688 reflections (4.95%)	wwPDB-VP
Wilson B-factor (Å ²)	24.4	Xtrriage
Anisotropy	0.331	Xtrriage
Bulk solvent k_{sol} (e/Å ³), B_{sol} (Å ²)	0.36 , 45.2	EDS
L-test for twinning ²	$\langle L \rangle = 0.44$, $\langle L^2 \rangle = 0.27$	Xtrriage
Estimated twinning fraction	No twinning to report.	Xtrriage
F_o, F_c correlation	0.91	EDS
Total number of atoms	6852	wwPDB-VP
Average B, all atoms (Å ²)	31.0	wwPDB-VP

Xtrriage's analysis on translational NCS is as follows: *The largest off-origin peak in the Patterson function is 17.52% of the height of the origin peak. No significant pseudotranslation is detected.*

¹Intensities estimated from amplitudes.

²Theoretical values of $\langle |L| \rangle$, $\langle L^2 \rangle$ for acentric reflections are 0.5, 0.333 respectively for untwinned datasets, and 0.375, 0.2 for perfectly twinned datasets.

5 Model quality [i](#)

5.1 Standard geometry [i](#)

Bond lengths and bond angles in the following residue types are not validated in this section: IB0

The Z score for a bond length (or angle) is the number of standard deviations the observed value is removed from the expected value. A bond length (or angle) with $|Z| > 5$ is considered an outlier worth inspection. RMSZ is the root-mean-square of all Z scores of the bond lengths (or angles).

Mol	Chain	Bond lengths		Bond angles	
		RMSZ	# Z >5	RMSZ	# Z >5
1	A	0.43	0/2121	0.59	0/2889
1	B	0.38	0/2121	0.56	0/2889
1	C	0.29	0/2070	0.50	0/2814
All	All	0.37	0/6312	0.55	0/8592

There are no bond length outliers.

There are no bond angle outliers.

There are no chirality outliers.

There are no planarity outliers.

5.2 Too-close contacts [i](#)

In the following table, the Non-H and H(model) columns list the number of non-hydrogen atoms and hydrogen atoms in the chain respectively. The H(added) column lists the number of hydrogen atoms added and optimized by MolProbity. The Clashes column lists the number of clashes within the asymmetric unit, whereas Symm-Clashes lists symmetry-related clashes.

Mol	Chain	Non-H	H(model)	H(added)	Clashes	Symm-Clashes
1	A	2074	0	2031	8	0
1	B	2074	0	2031	5	0
1	C	2027	0	1977	16	0
2	A	17	0	0	1	0
2	B	17	0	0	0	0
2	C	17	0	0	0	0
3	A	273	0	0	0	0
3	B	265	0	0	0	0
3	C	88	0	0	0	0
All	All	6852	0	6039	28	0

The all-atom clashscore is defined as the number of clashes found per 1000 atoms (including hydrogen atoms). The all-atom clashscore for this structure is 2.

All (28) close contacts within the same asymmetric unit are listed below, sorted by their clash magnitude.

Atom-1	Atom-2	Interatomic distance (Å)	Clash overlap (Å)
1:A:248:PRO:HB2	1:A:256:VAL:HG21	1.65	0.76
1:C:248:PRO:HB2	1:C:256:VAL:HG21	1.72	0.70
1:B:248:PRO:HB2	1:B:256:VAL:HG21	1.75	0.68
1:C:71:GLU:HG3	1:C:103:LEU:HD21	1.79	0.65
1:C:19:THR:HG21	1:C:86:ILE:HD13	1.82	0.62
1:C:108:ARG:HB3	1:C:111:LEU:HD13	1.83	0.59
1:A:19:THR:HG21	1:A:86:ILE:HD13	1.86	0.58
1:C:157:PHE:HD2	1:C:178:LEU:HD21	1.73	0.54
1:B:21:VAL:HG22	1:B:47:VAL:HB	1.90	0.53
1:C:181:MET:HG3	1:C:186:ALA:HB2	1.90	0.53
1:C:123:ARG:HH12	1:C:127:ASP:HB2	1.74	0.52
1:C:21:VAL:HG22	1:C:47:VAL:HB	1.93	0.50
1:C:134:PHE:CZ	1:C:219:ALA:HA	2.47	0.49
1:C:117:MET:HB3	1:C:120:ALA:HB2	1.94	0.49
1:B:208:PRO:HB3	1:B:268:ILE:HD12	1.94	0.49
1:C:106:LEU:HD11	1:C:201:ILE:HB	1.95	0.48
1:B:78:ILE:O	1:B:82:GLU:HG3	2.13	0.48
1:C:213:GLN:OE1	1:C:225:SER:HB3	2.16	0.46
1:A:21:VAL:HG22	1:A:47:VAL:HB	1.98	0.45
1:C:178:LEU:O	1:C:181:MET:HG2	2.17	0.45
1:A:122:PRO:HD3	1:A:228:LEU:HD21	1.99	0.45
1:A:218:LEU:HD23	2:A:301:IB0:CAO	2.46	0.45
1:C:13:ILE:HD11	1:C:37:VAL:HG11	2.00	0.44
1:C:174:PHE:O	1:C:178:LEU:HB2	2.18	0.44
1:A:184:ASP:OD1	1:B:183:PRO:HG2	2.19	0.43
1:A:107:ASN:HD22	1:A:108:ARG:HG2	1.84	0.42
1:A:4:VAL:HG11	1:A:83:ASP:OD2	2.20	0.41
1:C:64:PHE:HZ	1:C:184:ASP:OD2	2.04	0.41

There are no symmetry-related clashes.

5.3 Torsion angles [i](#)

5.3.1 Protein backbone [i](#)

In the following table, the Percentiles column shows the percent Ramachandran outliers of the chain as a percentile score with respect to all X-ray entries followed by that with respect to entries

of similar resolution.

The Analysed column shows the number of residues for which the backbone conformation was analysed, and the total number of residues.

Mol	Chain	Analysed	Favoured	Allowed	Outliers	Percentiles	
1	A	265/277 (96%)	258 (97%)	7 (3%)	0	100	100
1	B	265/277 (96%)	257 (97%)	8 (3%)	0	100	100
1	C	252/277 (91%)	246 (98%)	5 (2%)	1 (0%)	30	22
All	All	782/831 (94%)	761 (97%)	20 (3%)	1 (0%)	48	41

All (1) Ramachandran outliers are listed below:

Mol	Chain	Res	Type
1	C	107	ASN

5.3.2 Protein sidechains [i](#)

In the following table, the Percentiles column shows the percent sidechain outliers of the chain as a percentile score with respect to all X-ray entries followed by that with respect to entries of similar resolution.

The Analysed column shows the number of residues for which the sidechain conformation was analysed, and the total number of residues.

Mol	Chain	Analysed	Rotameric	Outliers	Percentiles	
1	A	233/240 (97%)	232 (100%)	1 (0%)	89	90
1	B	233/240 (97%)	232 (100%)	1 (0%)	89	90
1	C	229/240 (95%)	228 (100%)	1 (0%)	89	90
All	All	695/720 (96%)	692 (100%)	3 (0%)	89	90

All (3) residues with a non-rotameric sidechain are listed below:

Mol	Chain	Res	Type
1	A	200	GLN
1	B	107	ASN
1	C	5	GLU

Sometimes sidechains can be flipped to improve hydrogen bonding and reduce clashes. All (2) such sidechains are listed below:

Mol	Chain	Res	Type
1	A	107	ASN
1	A	195	GLN

5.3.3 RNA [i](#)

There are no RNA molecules in this entry.

5.4 Non-standard residues in protein, DNA, RNA chains [i](#)

There are no non-standard protein/DNA/RNA residues in this entry.

5.5 Carbohydrates [i](#)

There are no oligosaccharides in this entry.

5.6 Ligand geometry [i](#)

3 ligands are modelled in this entry.

In the following table, the Counts columns list the number of bonds (or angles) for which Mogul statistics could be retrieved, the number of bonds (or angles) that are observed in the model and the number of bonds (or angles) that are defined in the Chemical Component Dictionary. The Link column lists molecule types, if any, to which the group is linked. The Z score for a bond length (or angle) is the number of standard deviations the observed value is removed from the expected value. A bond length (or angle) with $|Z| > 2$ is considered an outlier worth inspection. RMSZ is the root-mean-square of all Z scores of the bond lengths (or angles).

Mol	Type	Chain	Res	Link	Bond lengths			Bond angles		
					Counts	RMSZ	# Z > 2	Counts	RMSZ	# Z > 2
2	IB0	C	301	-	18,19,19	2.86	5 (27%)	21,27,27	2.31	5 (23%)
2	IB0	A	301	-	18,19,19	2.74	4 (22%)	21,27,27	2.75	6 (28%)
2	IB0	B	301	-	18,19,19	2.69	5 (27%)	21,27,27	2.51	6 (28%)

In the following table, the Chirals column lists the number of chiral outliers, the number of chiral centers analysed, the number of these observed in the model and the number defined in the Chemical Component Dictionary. Similar counts are reported in the Torsion and Rings columns. '-' means no outliers of that kind were identified.

Mol	Type	Chain	Res	Link	Chirals	Torsions	Rings
2	IB0	C	301	-	-	0/4/17/17	0/3/3/3
2	IB0	A	301	-	-	0/4/17/17	0/3/3/3

Continued on next page...

Continued from previous page...

Mol	Type	Chain	Res	Link	Chirals	Torsions	Rings
2	IB0	B	301	-	-	0/4/17/17	0/3/3/3

All (14) bond length outliers are listed below:

Mol	Chain	Res	Type	Atoms	Z	Observed(Å)	Ideal(Å)
2	C	301	IB0	CAB-NAA	8.50	1.48	1.38
2	B	301	IB0	CAB-NAA	8.43	1.48	1.38
2	A	301	IB0	CAB-NAA	8.30	1.48	1.38
2	C	301	IB0	CAI-NAA	6.39	1.53	1.40
2	A	301	IB0	CAI-NAA	5.75	1.51	1.40
2	B	301	IB0	CAI-NAA	5.73	1.51	1.40
2	C	301	IB0	OAD-CAB	-3.06	1.18	1.22
2	A	301	IB0	OAD-CAB	-2.99	1.18	1.22
2	A	301	IB0	CAH-NAC	-2.80	1.32	1.36
2	C	301	IB0	CAL-CAK	-2.74	1.49	1.53
2	C	301	IB0	CAH-NAC	-2.72	1.33	1.36
2	B	301	IB0	OAD-CAB	-2.63	1.19	1.22
2	B	301	IB0	CAH-NAC	-2.11	1.33	1.36
2	B	301	IB0	CAL-CAK	-2.01	1.50	1.53

All (17) bond angle outliers are listed below:

Mol	Chain	Res	Type	Atoms	Z	Observed(°)	Ideal(°)
2	A	301	IB0	CAL-NAA-CAB	7.51	129.81	118.64
2	A	301	IB0	CAK-CAL-NAA	-6.98	98.84	104.94
2	B	301	IB0	CAL-NAA-CAB	6.74	128.67	118.64
2	B	301	IB0	CAK-CAL-NAA	-5.93	99.76	104.94
2	C	301	IB0	CAL-NAA-CAB	5.75	127.19	118.64
2	C	301	IB0	CAH-NAC-NAE	-4.92	107.71	112.72
2	B	301	IB0	CAL-NAA-CAI	-4.33	103.54	109.41
2	A	301	IB0	CAL-NAA-CAI	-4.12	103.83	109.41
2	C	301	IB0	CAK-CAL-NAA	-4.09	101.37	104.94
2	C	301	IB0	CAL-NAA-CAI	-3.93	104.08	109.41
2	A	301	IB0	CAH-NAC-NAE	-3.54	109.12	112.72
2	B	301	IB0	CAH-NAC-NAE	-3.27	109.39	112.72
2	C	301	IB0	CAJ-CAI-NAA	-2.41	106.19	111.53
2	A	301	IB0	CAJ-CAI-NAA	-2.39	106.23	111.53
2	A	301	IB0	CAK-CAJ-CAI	-2.31	106.10	109.07
2	B	301	IB0	CAJ-CAI-NAA	-2.20	106.64	111.53
2	B	301	IB0	CAK-CAJ-CAI	-2.14	106.33	109.07

There are no chirality outliers.

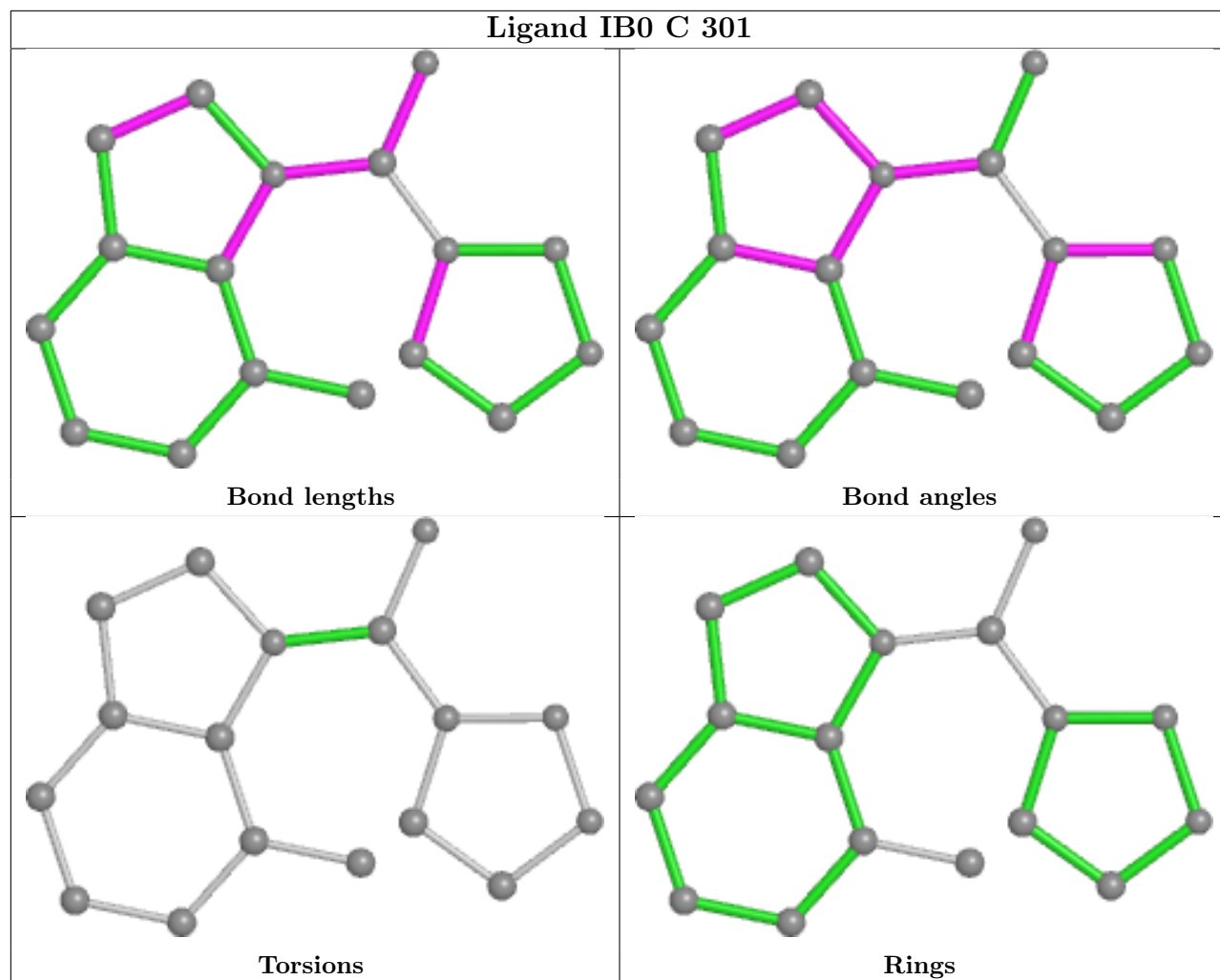
There are no torsion outliers.

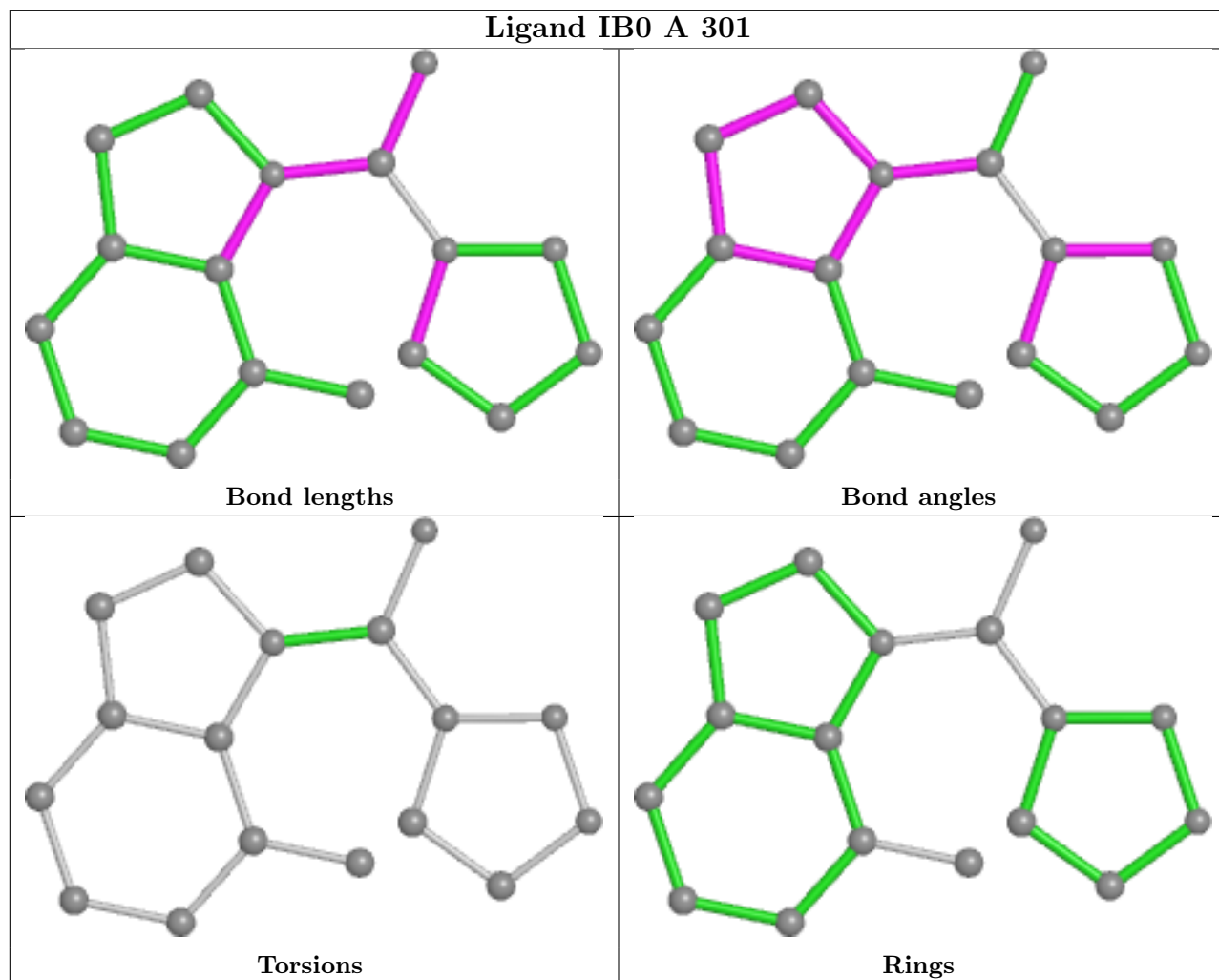
There are no ring outliers.

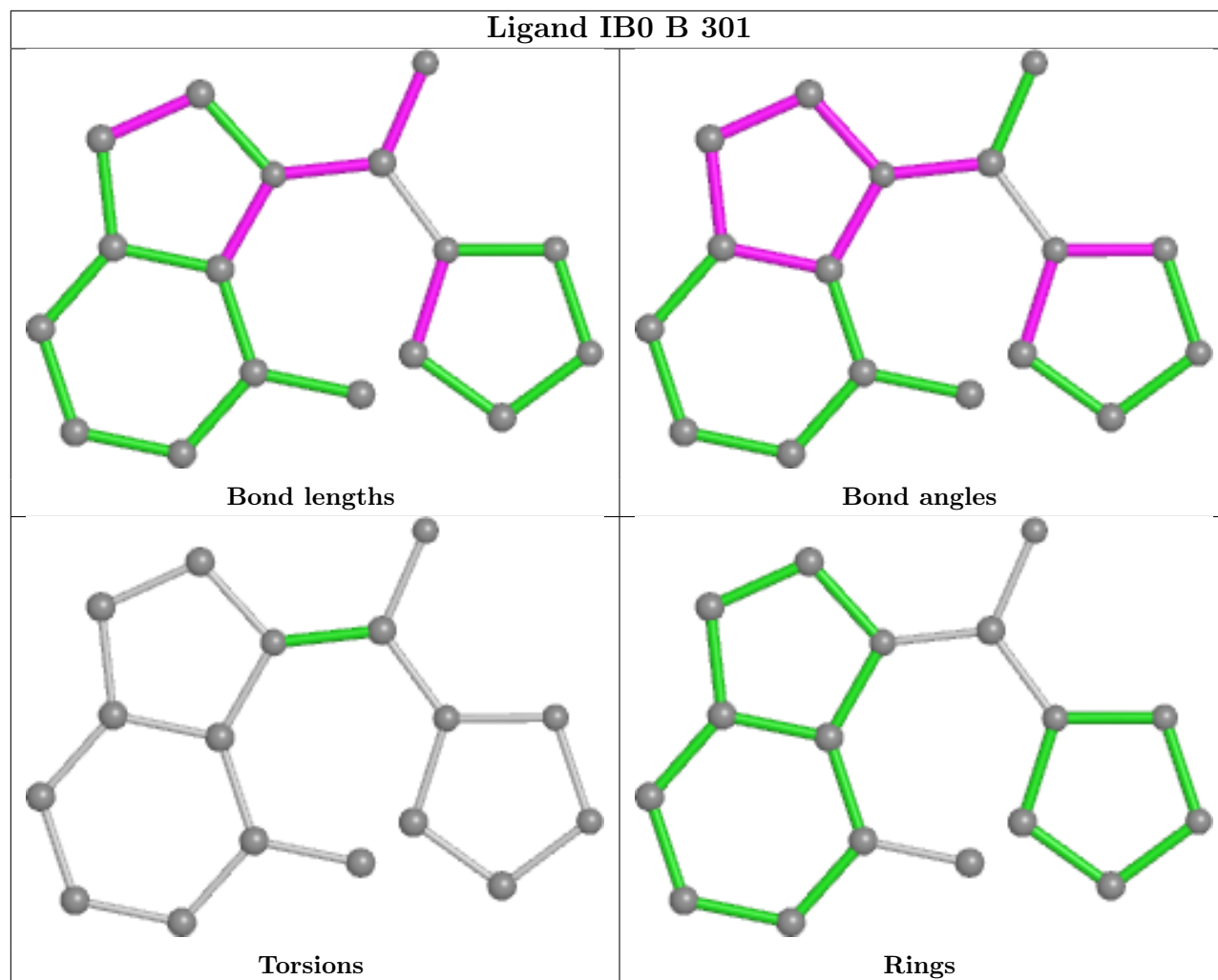
1 monomer is involved in 1 short contact:

Mol	Chain	Res	Type	Clashes	Symm-Clashes
2	A	301	IB0	1	0

The following is a two-dimensional graphical depiction of Mogul quality analysis of bond lengths, bond angles, torsion angles, and ring geometry for all instances of the Ligand of Interest. In addition, ligands with molecular weight > 250 and outliers as shown on the validation Tables will also be included. For torsion angles, if less than 5% of the Mogul distribution of torsion angles is within 10 degrees of the torsion angle in question, then that torsion angle is considered an outlier. Any bond that is central to one or more torsion angles identified as an outlier by Mogul will be highlighted in the graph. For rings, the root-mean-square deviation (RMSD) between the ring in question and similar rings identified by Mogul is calculated over all ring torsion angles. If the average RMSD is greater than 60 degrees and the minimal RMSD between the ring in question and any Mogul-identified rings is also greater than 60 degrees, then that ring is considered an outlier. The outliers are highlighted in purple. The color gray indicates Mogul did not find sufficient equivalents in the CSD to analyse the geometry.







5.7 Other polymers [i](#)

There are no such residues in this entry.

5.8 Polymer linkage issues [i](#)

There are no chain breaks in this entry.

6 Fit of model and data

6.1 Protein, DNA and RNA chains

In the following table, the column labelled ‘#RSRZ> 2’ contains the number (and percentage) of RSRZ outliers, followed by percent RSRZ outliers for the chain as percentile scores relative to all X-ray entries and entries of similar resolution. The OWAB column contains the minimum, median, 95th percentile and maximum values of the occupancy-weighted average B-factor per residue. The column labelled ‘Q< 0.9’ lists the number of (and percentage) of residues with an average occupancy less than 0.9.

Mol	Chain	Analysed	<RSRZ>	#RSRZ>2	OWAB(Å ²)	Q<0.9
1	A	267/277 (96%)	0.20	7 (2%) 57 59	11, 20, 34, 57	0
1	B	267/277 (96%)	0.44	10 (3%) 45 47	16, 24, 40, 67	0
1	C	260/277 (93%)	1.83	109 (41%) 1 1	24, 43, 63, 73	0
All	All	794/831 (95%)	0.82	126 (15%) 6 5	11, 27, 56, 73	0

All (126) RSRZ outliers are listed below:

Mol	Chain	Res	Type	RSRZ
1	C	107	ASN	4.9
1	C	62	PHE	4.8
1	C	67	TYR	4.7
1	C	77	LEU	4.6
1	C	81	LEU	4.5
1	B	17	GLU	4.4
1	C	72	GLY	4.3
1	C	185	ILE	4.3
1	B	128	VAL	4.3
1	C	109	PRO	4.2
1	C	111	LEU	4.2
1	C	189	VAL	4.2
1	C	18	ALA	4.1
1	C	103	LEU	4.1
1	C	84	LEU	4.0
1	A	17	GLU	4.0
1	C	145	ALA	3.9
1	C	61	TYR	3.8
1	B	268	ILE	3.8
1	B	16	GLY	3.8
1	C	151	LYS	3.7
1	C	153	TRP	3.7
1	C	187	LEU	3.7

Continued on next page...

Continued from previous page...

Mol	Chain	Res	Type	RSRZ
1	C	73	TYR	3.6
1	C	8	HIS	3.6
1	C	80	ILE	3.5
1	C	150	TYR	3.5
1	C	106	LEU	3.4
1	C	155	LEU	3.4
1	C	159	PRO	3.4
1	C	181	MET	3.3
1	C	179	PHE	3.3
1	C	70	LEU	3.3
1	C	142	LEU	3.3
1	C	68	SER	3.2
1	C	200	GLN	3.2
1	C	207	VAL	3.2
1	C	146	ILE	3.2
1	C	137	GLU	3.2
1	C	104	ALA	3.2
1	C	9	ASN	3.1
1	C	56	THR	3.1
1	C	15	SER	3.1
1	C	64	PHE	3.1
1	C	6	GLU	3.1
1	C	149	ASN	3.1
1	C	110	ASP	3.1
1	C	183	PRO	3.1
1	C	108	ARG	3.1
1	C	204	PHE	3.0
1	C	178	LEU	3.0
1	C	268	ILE	3.0
1	C	10	VAL	3.0
1	C	57	THR	2.9
1	C	143	PHE	2.9
1	C	152	ALA	2.8
1	C	193	ILE	2.8
1	C	218	LEU	2.8
1	C	112	PHE	2.8
1	C	205	VAL	2.8
1	C	47	VAL	2.8
1	C	147	ARG	2.8
1	C	86	ILE	2.8
1	C	65	ASP	2.7
1	C	88	SER	2.7

Continued on next page...

Continued from previous page...

Mol	Chain	Res	Type	RSRZ
1	C	202	LEU	2.7
1	C	71	GLU	2.7
1	C	87	GLU	2.7
1	B	13	ILE	2.7
1	C	66	ARG	2.7
1	C	63	ASP	2.7
1	C	52	MET	2.6
1	A	15	SER	2.6
1	B	15	SER	2.6
1	C	105	SER	2.6
1	C	49	TYR	2.6
1	C	156	GLY	2.6
1	C	244	ASP	2.6
1	B	69	ASN	2.6
1	C	164	GLY	2.6
1	C	21	VAL	2.6
1	C	82	GLU	2.6
1	C	177	THR	2.6
1	C	58	ASN	2.5
1	C	74	SER	2.5
1	C	158	ALA	2.5
1	C	234	CYS	2.5
1	C	51	ASN	2.5
1	C	175	SER	2.5
1	C	144	GLU	2.5
1	C	85	LYS	2.4
1	A	267	ASP	2.4
1	C	169	ILE	2.4
1	C	184	ASP	2.4
1	B	237	VAL	2.4
1	C	55	GLY	2.4
1	C	125	VAL	2.4
1	C	19	THR	2.4
1	C	29	ASP	2.3
1	C	180	ASN	2.3
1	C	44	TYR	2.3
1	C	160	LEU	2.3
1	C	190	GLY	2.2
1	B	166	MET	2.2
1	C	171	VAL	2.2
1	B	167	ASP	2.2
1	C	60	ASP	2.2

Continued on next page...

Continued from previous page...

Mol	Chain	Res	Type	RSRZ
1	C	194	PHE	2.2
1	C	176	ARG	2.2
1	C	69	ASN	2.2
1	C	172	GLN	2.2
1	C	102	VAL	2.2
1	C	148	SER	2.2
1	C	157	PHE	2.2
1	C	139	LEU	2.2
1	C	247	LEU	2.2
1	C	206	THR	2.1
1	A	103	LEU	2.1
1	A	137	GLU	2.1
1	A	14	GLY	2.1
1	C	232	LEU	2.1
1	C	233	GLY	2.1
1	A	128	VAL	2.0
1	C	166	MET	2.0
1	C	201	ILE	2.0
1	C	5	GLU	2.0

6.2 Non-standard residues in protein, DNA, RNA chains [i](#)

There are no non-standard protein/DNA/RNA residues in this entry.

6.3 Carbohydrates [i](#)

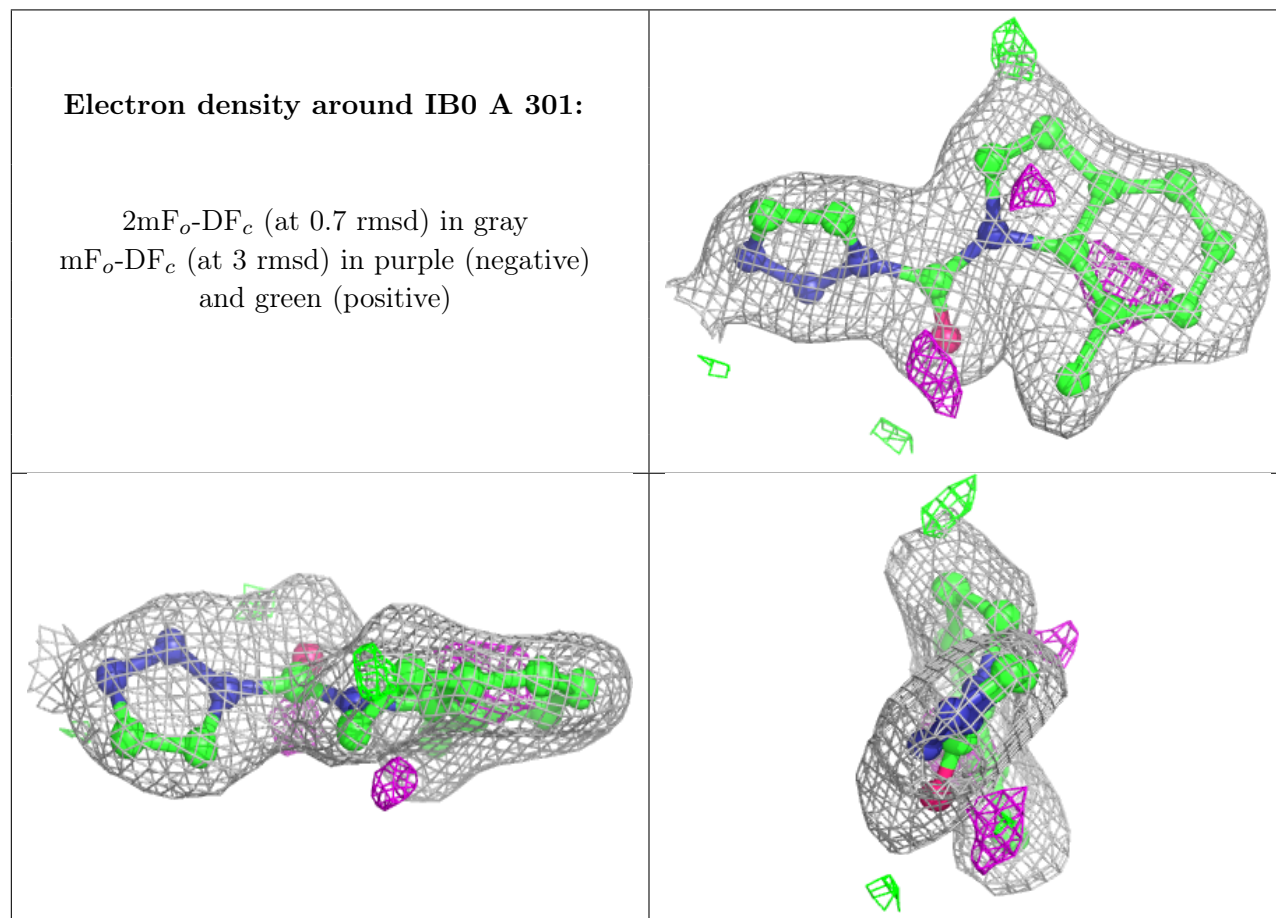
There are no monosaccharides in this entry.

6.4 Ligands [i](#)

In the following table, the Atoms column lists the number of modelled atoms in the group and the number defined in the chemical component dictionary. The B-factors column lists the minimum, median, 95th percentile and maximum values of B factors of atoms in the group. The column labelled 'Q< 0.9' lists the number of atoms with occupancy less than 0.9.

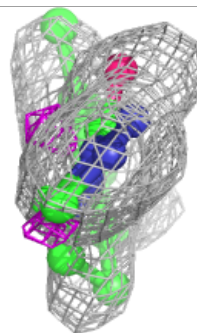
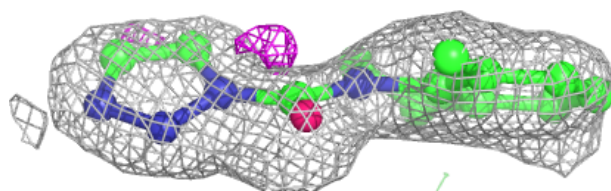
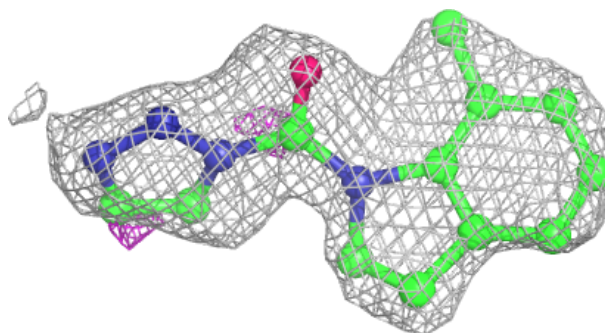
Mol	Type	Chain	Res	Atoms	RSCC	RSR	B-factors(Å ²)	Q<0.9
2	IB0	A	301	17/17	0.83	0.13	25,28,30,32	0
2	IB0	C	301	17/17	0.83	0.15	39,45,49,50	0
2	IB0	B	301	17/17	0.87	0.11	23,29,33,35	0

The following is a graphical depiction of the model fit to experimental electron density of all instances of the Ligand of Interest. In addition, ligands with molecular weight > 250 and outliers as shown on the geometry validation Tables will also be included. Each fit is shown from different orientation to approximate a three-dimensional view.

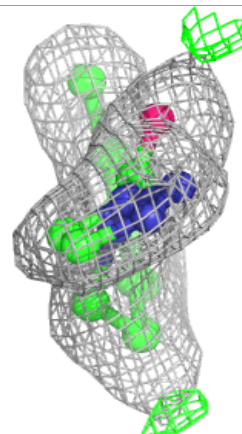
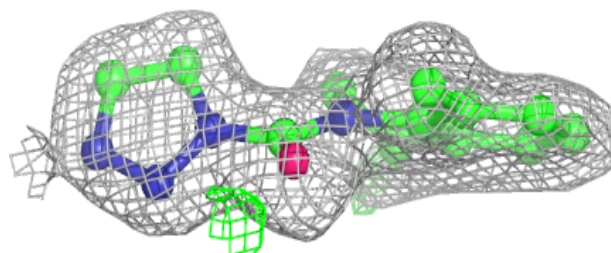
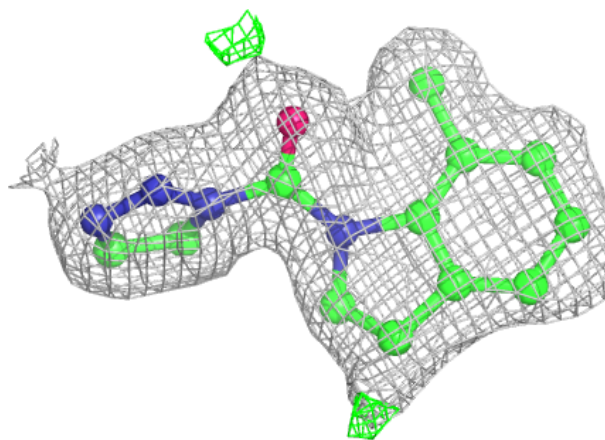


Electron density around IB0 C 301:

$2mF_o-DF_c$ (at 0.7 rmsd) in gray
 mF_o-DF_c (at 3 rmsd) in purple (negative)
and green (positive)

**Electron density around IB0 B 301:**

$2mF_o-DF_c$ (at 0.7 rmsd) in gray
 mF_o-DF_c (at 3 rmsd) in purple (negative)
and green (positive)



6.5 Other polymers [i](#)

There are no such residues in this entry.