



# Full wwPDB X-ray Structure Validation Report

Mar 13, 2018 – 07:06 pm GMT

PDB ID : 4YAK  
Title : Ca. Korarchaeum cryptofilum dinucleotide forming Acetyl-coenzyme A synthetase 1 in complex with coenzyme A, acetyl-coenzyme A and with phosphorylated phosphohistidine segment (site I orientation)  
Authors : Weisse, R.H.-J.; Scheidig, A.J.  
Deposited on : 2015-02-17  
Resolution : 2.46 Å(reported)

This is a Full wwPDB X-ray Structure Validation Report for a publicly released PDB entry.

We welcome your comments at [validation@mail.wwpdb.org](mailto:validation@mail.wwpdb.org)

A user guide is available at

<https://www.wwpdb.org/validation/2017/XrayValidationReportHelp>

with specific help available everywhere you see the  symbol.

---

The following versions of software and data (see [references](#) ) were used in the production of this report:

MolProbity : 4.02b-467  
Mogul : 1.7.3 (157068), CSD as539be (2018)  
Xtriage (Phenix) : 1.13  
EDS : trunk31020  
Percentile statistics : 20171227.v01 (using entries in the PDB archive December 27th 2017)  
Refmac : 5.8.0158  
CCP4 : 7.0 (Gargrove)  
Ideal geometry (proteins) : Engh & Huber (2001)  
Ideal geometry (DNA, RNA) : Parkinson et al. (1996)  
Validation Pipeline (wwPDB-VP) : trunk31020

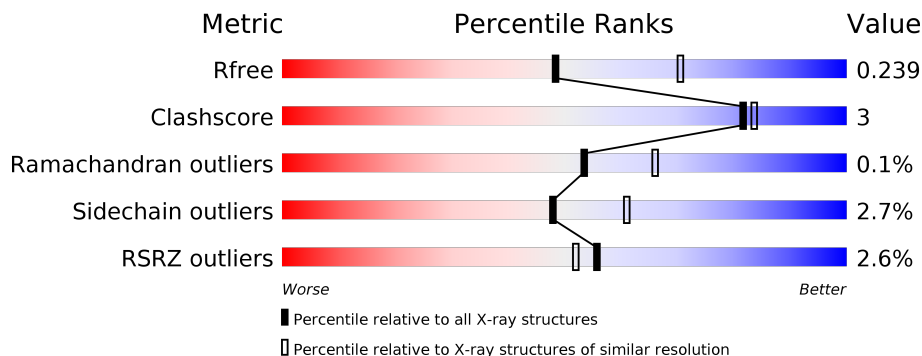
# 1 Overall quality at a glance

The following experimental techniques were used to determine the structure:

*X-RAY DIFFRACTION*

The reported resolution of this entry is 2.46 Å.

Percentile scores (ranging between 0-100) for global validation metrics of the entry are shown in the following graphic. The table shows the number of entries on which the scores are based.



Metric	Whole archive (#Entries)	Similar resolution (#Entries, resolution range(Å))
$R_{free}$	111664	1259 (2.48-2.44)
Clashscore	122126	1323 (2.48-2.44)
Ramachandran outliers	120053	1314 (2.48-2.44)
Sidechain outliers	120020	1314 (2.48-2.44)
RSRZ outliers	108989	1238 (2.48-2.44)

The table below summarises the geometric issues observed across the polymeric chains and their fit to the electron density. The red, orange, yellow and green segments on the lower bar indicate the fraction of residues that contain outliers for  $\geq 3$ , 2, 1 and 0 types of geometric quality criteria. A grey segment represents the fraction of residues that are not modelled. The numeric value for each fraction is indicated below the corresponding segment, with a dot representing fractions  $\leq 5\%$ . The upper red bar (where present) indicates the fraction of residues that have poor fit to the electron density. The numeric value is given above the bar.

Mol	Chain	Length	Quality of chain
1	A	464	
1	C	464	
2	B	230	
2	D	230	

## 2 Entry composition [i](#)

There are 5 unique types of molecules in this entry. The entry contains 21245 atoms, of which 10686 are hydrogens and 0 are deuteriums.

In the tables below, the ZeroOcc column contains the number of atoms modelled with zero occupancy, the AltConf column contains the number of residues with at least one atom in alternate conformation and the Trace column contains the number of residues modelled with at most 2 atoms.

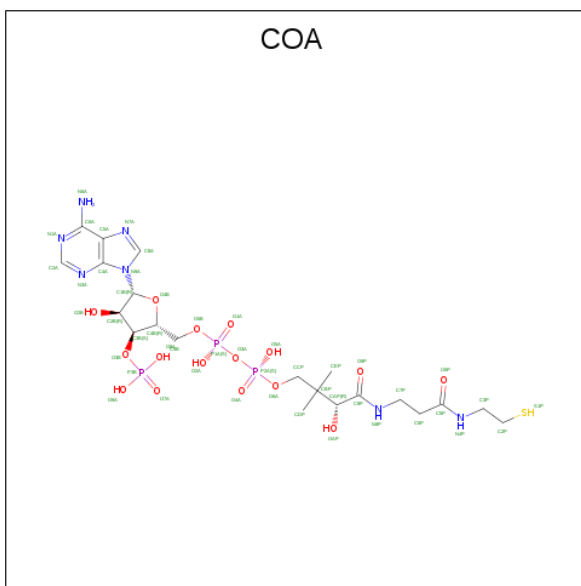
- Molecule 1 is a protein called alpha subunit of Acyl-CoA synthetase (NDP forming).

Mol	Chain	Residues	Atoms								ZeroOcc	AltConf	Trace
			Total	C	H	N	O	P	S				
1	A	463	Total	C	H	N	O	P	S	0	0	0	
			6973	2211	3508	577	662	1	14				
1	C	463	Total	C	H	N	O	P	S	0	0	0	
			6958	2208	3497	576	662	1	14				

- Molecule 2 is a protein called beta subunit of Acyl-CoA synthetase (NDP forming).

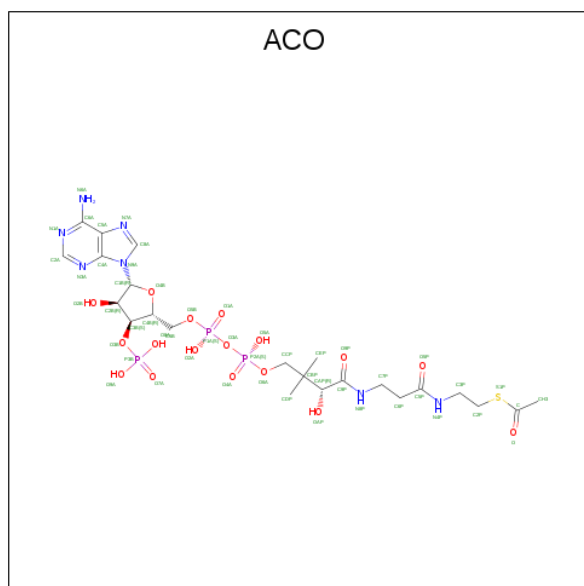
Mol	Chain	Residues	Atoms						ZeroOcc	AltConf	Trace
			Total	C	H	N	O	S			
2	B	229	Total	C	H	N	O	S	0	0	0
			3603	1138	1825	308	328	4			
2	D	224	Total	C	H	N	O	S	0	0	0
			3528	1114	1790	300	320	4			

- Molecule 3 is COENZYME A (three-letter code: COA) (formula: C<sub>21</sub>H<sub>36</sub>N<sub>7</sub>O<sub>16</sub>P<sub>3</sub>S).



Mol	Chain	Residues	Atoms							ZeroOcc	AltConf
			Total	C	H	N	O	P	S		
3	A	1	80	21	32	7	16	3	1	0	0

- Molecule 4 is ACETYL COENZYME \*A (three-letter code: ACO) (formula:  $C_{23}H_{38}N_7O_{17}P_3S$ ).



Mol	Chain	Residues	Atoms							ZeroOcc	AltConf
			Total	C	H	N	O	P	S		
4	C	1	85	23	34	7	17	3	1	0	0

- Molecule 5 is water.

Mol	Chain	Residues	Atoms	ZeroOcc	AltConf
5	A	9	Total O 9 9	0	0
5	C	7	Total O 7 7	0	0
5	D	2	Total O 2 2	0	0

### 3 Residue-property plots [i](#)

These plots are drawn for all protein, RNA and DNA chains in the entry. The first graphic for a chain summarises the proportions of the various outlier classes displayed in the second graphic. The second graphic shows the sequence view annotated by issues in geometry and electron density. Residues are color-coded according to the number of geometric quality criteria for which they contain at least one outlier: green = 0, yellow = 1, orange = 2 and red = 3 or more. A red dot above a residue indicates a poor fit to the electron density ( $RSRZ > 2$ ). Stretches of 2 or more consecutive residues without any outlier are shown as a green connector. Residues present in the sample, but not in the model, are shown in grey.

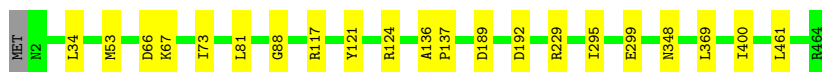
- Molecule 1: alpha subunit of Acyl-CoA synthetase (NDP forming)

Chain A: 




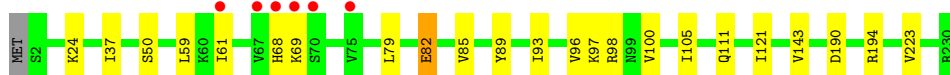
- Molecule 1: alpha subunit of Acyl-CoA synthetase (NDP forming)

Chain C: 



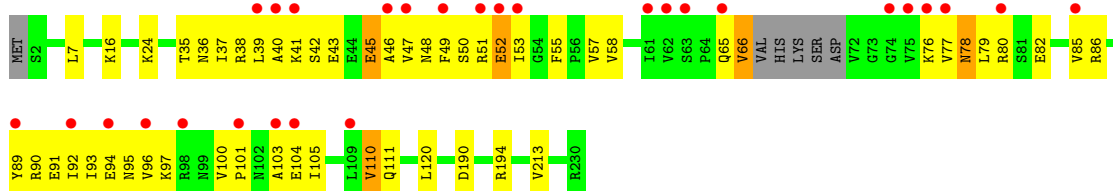
- Molecule 2: beta subunit of Acyl-CoA synthetase (NDP forming)

Chain B: 



- Molecule 2: beta subunit of Acyl-CoA synthetase (NDP forming)

Chain D: 



## 4 Data and refinement statistics

Property	Value	Source
Space group	P 21 21 21	Depositor
Cell constants a, b, c, $\alpha$ , $\beta$ , $\gamma$	106.41Å 111.69Å 125.97Å 90.00° 90.00° 90.00°	Depositor
Resolution (Å)	83.57 – 2.46 83.57 – 2.46	Depositor EDS
% Data completeness (in resolution range)	97.6 (83.57-2.46) 98.1 (83.57-2.46)	Depositor EDS
$R_{merge}$	0.22	Depositor
$R_{sym}$	(Not available)	Depositor
$\langle I/\sigma(I) \rangle$ <sup>1</sup>	1.00 (at 2.45Å)	Xtrriage
Refinement program	PHENIX (phenix.refine: 1.8.4_1496)	Depositor
R, $R_{free}$	0.194 , 0.238 0.198 , 0.239	Depositor DCC
$R_{free}$ test set	2734 reflections (5.06%)	wwPDB-VP
Wilson B-factor (Å <sup>2</sup> )	51.1	Xtrriage
Anisotropy	0.408	Xtrriage
Bulk solvent $k_{sol}$ (e/Å <sup>3</sup> ), $B_{sol}$ (Å <sup>2</sup> )	0.34 , 28.0	EDS
L-test for twinning <sup>2</sup>	$\langle  L  \rangle = 0.47$ , $\langle L^2 \rangle = 0.30$	Xtrriage
Estimated twinning fraction	0.043 for k,h,-l	Xtrriage
$F_o, F_c$ correlation	0.95	EDS
Total number of atoms	21245	wwPDB-VP
Average B, all atoms (Å <sup>2</sup> )	70.0	wwPDB-VP

Xtrriage's analysis on translational NCS is as follows: *The largest off-origin peak in the Patterson function is 3.28% of the height of the origin peak. No significant pseudotranslation is detected.*

<sup>1</sup>Intensities estimated from amplitudes.

<sup>2</sup>Theoretical values of  $\langle |L| \rangle$ ,  $\langle L^2 \rangle$  for acentric reflections are 0.5, 0.333 respectively for untwinned datasets, and 0.375, 0.2 for perfectly twinned datasets.

## 5 Model quality [i](#)

### 5.1 Standard geometry [i](#)

Bond lengths and bond angles in the following residue types are not validated in this section: COA, ACO, NEP

The Z score for a bond length (or angle) is the number of standard deviations the observed value is removed from the expected value. A bond length (or angle) with  $|Z| > 5$  is considered an outlier worth inspection. RMSZ is the root-mean-square of all Z scores of the bond lengths (or angles).

Mol	Chain	Bond lengths		Bond angles	
		RMSZ	# Z  >5	RMSZ	# Z  >5
1	A	0.31	0/3517	0.44	0/4774
1	C	0.30	0/3513	0.44	0/4770
2	B	0.30	0/1806	0.47	0/2437
2	D	0.33	0/1764	0.54	0/2380
All	All	0.31	0/10600	0.46	0/14361

There are no bond length outliers.

There are no bond angle outliers.

There are no chirality outliers.

There are no planarity outliers.

### 5.2 Too-close contacts [i](#)

In the following table, the Non-H and H(model) columns list the number of non-hydrogen atoms and hydrogen atoms in the chain respectively. The H(added) column lists the number of hydrogen atoms added and optimized by MolProbity. The Clashes column lists the number of clashes within the asymmetric unit, whereas Symm-Clashes lists symmetry related clashes.

Mol	Chain	Non-H	H(model)	H(added)	Clashes	Symm-Clashes
1	A	3465	3508	3509	4	0
1	C	3461	3497	3498	10	0
2	B	1778	1825	1827	10	0
2	D	1738	1790	1791	35	0
3	A	48	32	32	0	0
4	C	51	34	34	0	0
5	A	9	0	0	0	0
5	C	7	0	0	0	0
5	D	2	0	0	0	0
All	All	10559	10686	10691	59	0

The all-atom clashscore is defined as the number of clashes found per 1000 atoms (including hydrogen atoms). The all-atom clashscore for this structure is 3.

All (59) close contacts within the same asymmetric unit are listed below, sorted by their clash magnitude.

Atom-1	Atom-2	Interatomic distance (Å)	Clash overlap (Å)
1:A:85:ASP:OD2	1:A:117:ARG:NH2	2.24	0.71
2:D:57:VAL:HG11	2:D:110:VAL:HG22	1.78	0.65
2:D:43:GLU:HG2	2:D:89:TYR:CG	2.34	0.63
1:A:200:ASP:OD1	1:A:233:ARG:NH2	2.32	0.63
1:C:299:GLU:N	1:C:299:GLU:OE1	2.34	0.61
2:D:97:LYS:NZ	2:D:101:PRO:O	2.27	0.60
2:D:42:SER:OG	2:D:43:GLU:N	2.35	0.59
2:D:47:VAL:HG22	2:D:85:VAL:HB	1.87	0.56
2:D:24:LYS:NZ	2:D:35:THR:OG1	2.39	0.56
2:D:43:GLU:HG2	2:D:89:TYR:CD1	2.44	0.53
2:D:79:LEU:HD23	2:D:85:VAL:HG13	1.90	0.52
2:D:51:ARG:HA	2:D:55:PHE:CE1	2.47	0.50
2:D:190:ASP:O	2:D:194:ARG:HG3	2.13	0.49
2:D:77:VAL:HG12	2:D:78:ASN:HB2	1.94	0.49
2:D:38:ARG:HB2	2:D:53:ILE:HD11	1.95	0.48
2:D:76:LYS:HG2	2:D:92:ILE:HD11	1.96	0.48
1:C:124:ARG:NH1	1:C:189:ASP:OD1	2.47	0.48
2:D:79:LEU:HD23	2:D:85:VAL:HA	1.96	0.48
2:D:58:VAL:CG1	2:D:111:GLN:HB3	2.44	0.47
2:D:40:ALA:HB1	2:D:46:ALA:HB2	1.95	0.47
1:C:369:LEU:HD11	1:C:400:ILE:HD13	1.95	0.47
2:D:65:GLN:O	2:D:66:VAL:HG12	2.15	0.47
2:D:58:VAL:HG13	2:D:111:GLN:HB3	1.96	0.47
2:D:48:ASN:O	2:D:52:GLU:N	2.48	0.47
2:D:42:SER:HB3	2:D:45:GLU:HG2	1.97	0.47
1:C:295:ILE:HD12	1:C:295:ILE:N	2.31	0.46
2:B:190:ASP:O	2:B:194:ARG:HG3	2.16	0.46
2:B:121:ILE:HD12	2:B:143:VAL:HG11	1.97	0.46
2:D:91:GLU:O	2:D:95:ASN:N	2.44	0.45
2:D:86:ARG:HB3	2:D:90:ARG:HH12	1.82	0.45
1:C:136:ALA:N	1:C:137:PRO:CD	2.80	0.44
2:B:93:ILE:O	2:B:97:LYS:HG2	2.18	0.44
2:D:51:ARG:HA	2:D:55:PHE:CZ	2.53	0.44
2:D:89:TYR:CZ	2:D:93:ILE:HD12	2.52	0.44
2:D:58:VAL:HG23	2:D:76:LYS:O	2.17	0.44
2:B:85:VAL:O	2:B:89:TYR:N	2.44	0.44
2:D:41:LYS:HB2	2:D:45:GLU:HG3	1.99	0.43

*Continued on next page...*



Continued from previous page...

Atom-1	Atom-2	Interatomic distance (Å)	Clash overlap (Å)
2:B:59:LEU:HD13	2:B:79:LEU:HD12	2.00	0.43
1:C:66:ASP:OD1	1:C:67:LYS:N	2.51	0.43
1:C:73:ILE:N	1:C:73:ILE:HD12	2.33	0.43
2:D:120:LEU:N	2:D:213:VAL:O	2.46	0.43
2:D:96:VAL:HG13	2:D:97:LYS:N	2.33	0.43
1:A:136:ALA:N	1:A:137:PRO:CD	2.81	0.43
2:B:105:ILE:HD12	2:B:105:ILE:N	2.34	0.42
2:B:37:ILE:HG22	2:B:111:GLN:HG2	2.01	0.42
2:B:82:GLU:OE1	2:B:82:GLU:N	2.47	0.42
2:D:40:ALA:CB	2:D:46:ALA:HB2	2.49	0.42
2:D:43:GLU:CD	2:D:86:ARG:HA	2.39	0.42
2:B:96:VAL:HG13	2:B:97:LYS:N	2.35	0.42
1:A:124:ARG:NH1	1:A:189:ASP:OD1	2.53	0.41
2:D:37:ILE:HG22	2:D:111:GLN:HA	2.01	0.41
2:D:82:GLU:HA	2:D:85:VAL:HG23	2.01	0.41
1:C:34:LEU:HD12	1:C:53:MET:HG2	2.03	0.41
2:B:24:LYS:NZ	2:B:223:VAL:O	2.49	0.41
1:C:88:GLY:HA3	1:C:121:TYR:CG	2.55	0.41
2:D:103:ALA:HB3	2:D:105:ILE:HD11	2.03	0.41
2:D:46:ALA:O	2:D:50:SER:N	2.40	0.41
1:C:81:LEU:HD22	1:C:117:ARG:HD3	2.03	0.41
2:D:90:ARG:O	2:D:94:GLU:HB2	2.22	0.41

There are no symmetry-related clashes.

## 5.3 Torsion angles [i](#)

### 5.3.1 Protein backbone [i](#)

In the following table, the Percentiles column shows the percent Ramachandran outliers of the chain as a percentile score with respect to all X-ray entries followed by that with respect to entries of similar resolution.

The Analysed column shows the number of residues for which the backbone conformation was analysed, and the total number of residues.

Mol	Chain	Analysed	Favoured	Allowed	Outliers	Percentiles
1	A	460/464 (99%)	447 (97%)	12 (3%)	1 (0%)	49 59
1	C	460/464 (99%)	448 (97%)	11 (2%)	1 (0%)	49 59
2	B	227/230 (99%)	223 (98%)	4 (2%)	0	100 100

Continued on next page...

Continued from previous page...

Mol	Chain	Analysed	Favoured	Allowed	Outliers	Percentiles	
2	D	220/230 (96%)	211 (96%)	9 (4%)	0	100	100
All	All	1367/1388 (98%)	1329 (97%)	36 (3%)	2 (0%)	53	66

All (2) Ramachandran outliers are listed below:

Mol	Chain	Res	Type
1	A	348	ASN
1	C	348	ASN

### 5.3.2 Protein sidechains [i](#)

In the following table, the Percentiles column shows the percent sidechain outliers of the chain as a percentile score with respect to all X-ray entries followed by that with respect to entries of similar resolution.

The Analysed column shows the number of residues for which the sidechain conformation was analysed, and the total number of residues.

Mol	Chain	Analysed	Rotameric	Outliers	Percentiles	
1	A	368/369 (100%)	361 (98%)	7 (2%)	60	72
1	C	367/369 (100%)	364 (99%)	3 (1%)	83	89
2	B	190/197 (96%)	183 (96%)	7 (4%)	37	49
2	D	186/197 (94%)	173 (93%)	13 (7%)	16	21
All	All	1111/1132 (98%)	1081 (97%)	30 (3%)	48	61

All (30) residues with a non-rotameric sidechain are listed below:

Mol	Chain	Res	Type
1	A	39	LYS
1	A	67	LYS
1	A	93	LYS
1	A	192	ASP
1	A	326	SER
1	A	359	ASP
1	A	428	LYS
2	B	50	SER
2	B	61	ILE
2	B	68	HIS
2	B	69	LYS
2	B	82	GLU

Continued on next page...

*Continued from previous page...*

Mol	Chain	Res	Type
2	B	98	ARG
2	B	100	VAL
1	C	192	ASP
1	C	229	ARG
1	C	461	LEU
2	D	7	LEU
2	D	16	LYS
2	D	36	ASN
2	D	39	LEU
2	D	45	GLU
2	D	49	PHE
2	D	52	GLU
2	D	66	VAL
2	D	78	ASN
2	D	80	ARG
2	D	100	VAL
2	D	104	GLU
2	D	110	VAL

Some sidechains can be flipped to improve hydrogen bonding and reduce clashes. All (1) such sidechains are listed below:

Mol	Chain	Res	Type
2	B	99	ASN

### 5.3.3 RNA [i](#)

There are no RNA molecules in this entry.

## 5.4 Non-standard residues in protein, DNA, RNA chains [i](#)

2 non-standard protein/DNA/RNA residues are modelled in this entry.

In the following table, the Counts columns list the number of bonds (or angles) for which Mogul statistics could be retrieved, the number of bonds (or angles) that are observed in the model and the number of bonds (or angles) that are defined in the Chemical Component Dictionary. The Link column lists molecule types, if any, to which the group is linked. The Z score for a bond length (or angle) is the number of standard deviations the observed value is removed from the expected value. A bond length (or angle) with  $|Z| > 2$  is considered an outlier worth inspection. RMSZ is the root-mean-square of all Z scores of the bond lengths (or angles).

Mol	Type	Chain	Res	Link	Bond lengths			Bond angles		
					Counts	RMSZ	# Z  > 2	Counts	RMSZ	# Z  > 2
1	NEP	A	254	1	11,14,15	2.03	3 (27%)	7,20,22	1.26	1 (14%)
1	NEP	C	254	1	11,14,15	4.41	5 (45%)	7,20,22	1.60	1 (14%)

In the following table, the Chirals column lists the number of chiral outliers, the number of chiral centers analysed, the number of these observed in the model and the number defined in the Chemical Component Dictionary. Similar counts are reported in the Torsion and Rings columns. '-' means no outliers of that kind were identified.

Mol	Type	Chain	Res	Link	Chirals	Torsions	Rings
1	NEP	A	254	1	-	0/4/12/14	0/1/1/1
1	NEP	C	254	1	-	0/4/12/14	0/1/1/1

All (8) bond length outliers are listed below:

Mol	Chain	Res	Type	Atoms	Z	Observed(Å)	Ideal(Å)
1	C	254	NEP	P-O2P	-4.28	1.45	1.54
1	C	254	NEP	P-O1P	2.27	1.59	1.54
1	A	254	NEP	CD2-NE2	2.33	1.43	1.39
1	A	254	NEP	P-O1P	2.56	1.60	1.54
1	C	254	NEP	CD2-NE2	2.57	1.44	1.39
1	C	254	NEP	CA-C	3.15	1.54	1.50
1	A	254	NEP	CA-C	4.79	1.56	1.50
1	C	254	NEP	P-O3P	13.03	1.58	1.47

All (2) bond angle outliers are listed below:

Mol	Chain	Res	Type	Atoms	Z	Observed(°)	Ideal(°)
1	C	254	NEP	O1P-P-O3P	-3.04	102.94	112.42
1	A	254	NEP	CG-CD2-NE2	-2.08	106.25	108.97

There are no chirality outliers.

There are no torsion outliers.

There are no ring outliers.

No monomer is involved in short contacts.

## 5.5 Carbohydrates [i](#)

There are no carbohydrates in this entry.

## 5.6 Ligand geometry [i](#)

2 ligands are modelled in this entry.

In the following table, the Counts columns list the number of bonds (or angles) for which Mogul statistics could be retrieved, the number of bonds (or angles) that are observed in the model and the number of bonds (or angles) that are defined in the Chemical Component Dictionary. The Link column lists molecule types, if any, to which the group is linked. The Z score for a bond length (or angle) is the number of standard deviations the observed value is removed from the expected value. A bond length (or angle) with  $|Z| > 2$  is considered an outlier worth inspection. RMSZ is the root-mean-square of all Z scores of the bond lengths (or angles).

Mol	Type	Chain	Res	Link	Bond lengths			Bond angles		
					Counts	RMSZ	# Z  > 2	Counts	RMSZ	# Z  > 2
3	COA	A	500	-	41,50,50	0.46	0	51,75,75	0.63	1 (1%)
4	ACO	C	500	-	45,53,53	0.51	0	56,79,79	0.57	0

In the following table, the Chirals column lists the number of chiral outliers, the number of chiral centers analysed, the number of these observed in the model and the number defined in the Chemical Component Dictionary. Similar counts are reported in the Torsion and Rings columns. '-' means no outliers of that kind were identified.

Mol	Type	Chain	Res	Link	Chirals	Torsions	Rings
3	COA	A	500	-	-	0/44/64/64	0/3/3/3
4	ACO	C	500	-	-	0/47/67/67	0/3/3/3

There are no bond length outliers.

All (1) bond angle outliers are listed below:

Mol	Chain	Res	Type	Atoms	Z	Observed( $^{\circ}$ )	Ideal( $^{\circ}$ )
3	A	500	COA	C4A-C5A-N7A	2.06	111.40	109.41

There are no chirality outliers.

There are no torsion outliers.

There are no ring outliers.

No monomer is involved in short contacts.

## 5.7 Other polymers [i](#)

There are no such residues in this entry.

## 5.8 Polymer linkage issues

There are no chain breaks in this entry.

## 6 Fit of model and data [i](#)

### 6.1 Protein, DNA and RNA chains [i](#)

In the following table, the column labelled ‘#RSRZ > 2’ contains the number (and percentage) of RSRZ outliers, followed by percent RSRZ outliers for the chain as percentile scores relative to all X-ray entries and entries of similar resolution. The OWAB column contains the minimum, median, 95<sup>th</sup> percentile and maximum values of the occupancy-weighted average B-factor per residue. The column labelled ‘Q < 0.9’ lists the number of (and percentage) of residues with an average occupancy less than 0.9.

Mol	Chain	Analysed	<RSRZ>	#RSRZ>2	OWAB(Å <sup>2</sup> )	Q<0.9
1	A	462/464 (99%)	-0.15	2 (0%) 92 93	36, 52, 75, 104	0
1	C	462/464 (99%)	-0.15	0 100 100	39, 54, 78, 111	0
2	B	229/230 (99%)	0.02	6 (2%) 56 52	47, 66, 112, 141	0
2	D	224/230 (97%)	0.54	28 (12%) 4 2	46, 67, 164, 194	0
All	All	1377/1388 (99%)	-0.01	36 (2%) 56 52	36, 56, 120, 194	0

All (36) RSRZ outliers are listed below:

Mol	Chain	Res	Type	RSRZ
2	D	76	LYS	7.1
2	D	103	ALA	6.5
2	D	101	PRO	6.5
2	D	75	VAL	6.3
2	D	98	ARG	5.3
2	D	89	TYR	4.8
2	D	53	ILE	4.7
2	D	52	GLU	4.2
2	B	70	SER	4.1
2	D	40	ALA	3.7
2	D	74	GLY	3.5
1	A	404	GLY	3.2
2	D	104	GLU	3.1
2	D	41	LYS	3.1
2	B	67	VAL	3.1
2	B	69	LYS	3.1
2	D	51	ARG	3.0
2	D	49	PHE	3.0
2	D	47	VAL	2.8
2	D	77	VAL	2.7
2	D	92	ILE	2.7

*Continued on next page...*

*Continued from previous page...*

Mol	Chain	Res	Type	RSRZ
2	D	62	VAL	2.6
2	D	94	GLU	2.6
2	D	80	ARG	2.5
2	D	39	LEU	2.4
2	D	46	ALA	2.4
2	D	109	LEU	2.2
2	D	96	VAL	2.2
2	B	61	ILE	2.2
2	D	65	GLN	2.1
2	B	75	VAL	2.1
1	A	463	VAL	2.1
2	D	63	SER	2.1
2	D	61	ILE	2.0
2	D	85	VAL	2.0
2	B	68	HIS	2.0

## 6.2 Non-standard residues in protein, DNA, RNA chains [i](#)

In the following table, the Atoms column lists the number of modelled atoms in the group and the number defined in the chemical component dictionary. The B-factors column lists the minimum, median, 95<sup>th</sup> percentile and maximum values of B factors of atoms in the group. The column labelled 'Q< 0.9' lists the number of atoms with occupancy less than 0.9.

Mol	Type	Chain	Res	Atoms	RSCC	RSR	B-factors(Å <sup>2</sup> )	Q<0.9
1	NEP	A	254	14/15	0.95	0.12	67,75,86,88	0
1	NEP	C	254	14/15	0.97	0.11	63,72,87,87	0

## 6.3 Carbohydrates [i](#)

There are no carbohydrates in this entry.

## 6.4 Ligands [i](#)

In the following table, the Atoms column lists the number of modelled atoms in the group and the number defined in the chemical component dictionary. The B-factors column lists the minimum, median, 95<sup>th</sup> percentile and maximum values of B factors of atoms in the group. The column labelled 'Q< 0.9' lists the number of atoms with occupancy less than 0.9.

Mol	Type	Chain	Res	Atoms	RSCC	RSR	B-factors(Å <sup>2</sup> )	Q<0.9
3	COA	A	500	48/48	0.96	0.14	52,61,74,84	0

*Continued on next page...*



*Continued from previous page...*

Mol	Type	Chain	Res	Atoms	RSCC	RSR	B-factors( $\text{\AA}^2$ )	Q<0.9
4	ACO	C	500	51/51	0.97	0.13	54,64,80,85	0

## 6.5 Other polymers [i](#)

There are no such residues in this entry.