



Full wwPDB EM Validation Report ⓘ

Sep 29, 2024 – 12:12 AM JST

PDB ID : 8YB4
EMDB ID : EMD-39108
Title : Pfr conformer of Arabidopsis thaliana phytochrome B in complex with phytochrome-interacting factor 6
Authors : Wang, Z.; Wang, W.; Zhao, D.; Song, Y.; Xu, B.; Zhao, J.; Wang, J.
Deposited on : 2024-02-11
Resolution : 3.10 Å(reported)
Based on initial model : .

This is a Full wwPDB EM Validation Report for a publicly released PDB entry.

We welcome your comments at validation@mail.wwpdb.org

A user guide is available at

<https://www.wwpdb.org/validation/2017/EMValidationReportHelp>

with specific help available everywhere you see the ⓘ symbol.

The types of validation reports are described at

<http://www.wwpdb.org/validation/2017/FAQs#types>.

The following versions of software and data (see [references ⓘ](#)) were used in the production of this report:

EMDB validation analysis : 0.0.1.dev113
Mogul : 1.8.5 (274361), CSD as541be (2020)
MolProbity : 4.02b-467
buster-report : 1.1.7 (2018)
Percentile statistics : 20231227.v01 (using entries in the PDB archive December 27th 2023)
MapQ : 1.9.13
Ideal geometry (proteins) : Engh & Huber (2001)
Ideal geometry (DNA, RNA) : Parkinson et al. (1996)
Validation Pipeline (wwPDB-VP) : 2.39

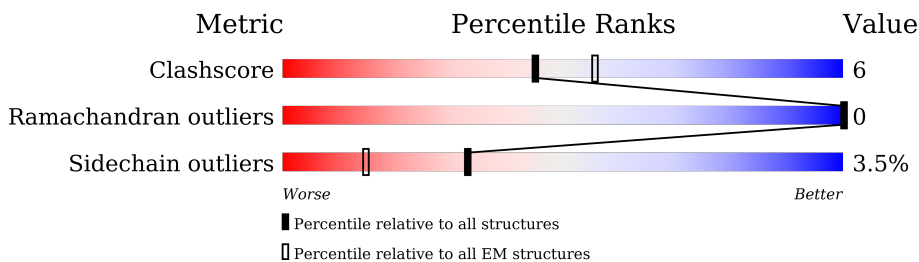
1 Overall quality at a glance

The following experimental techniques were used to determine the structure:

ELECTRON MICROSCOPY

The reported resolution of this entry is 3.10 Å.

Percentile scores (ranging between 0-100) for global validation metrics of the entry are shown in the following graphic. The table shows the number of entries on which the scores are based.



Metric	Whole archive (#Entries)	EM structures (#Entries)
Clashscore	210492	15764
Ramachandran outliers	207382	16835
Sidechain outliers	206894	16415

The table below summarises the geometric issues observed across the polymeric chains and their fit to the map. The red, orange, yellow and green segments of the bar indicate the fraction of residues that contain outliers for ≥ 3 , 2, 1 and 0 types of geometric quality criteria respectively. A grey segment represents the fraction of residues that are not modelled. The numeric value for each fraction is indicated below the corresponding segment, with a dot representing fractions $\leq 5\%$. The upper red bar (where present) indicates the fraction of residues that have poor fit to the EM map (all-atom inclusion $< 40\%$). The numeric value is given above the bar.

Mol	Chain	Length	Quality of chain
1	A	1177	
1	B	1177	
2	C	105	

2 Entry composition i

There are 3 unique types of molecules in this entry. The entry contains 8400 atoms, of which 0 are hydrogens and 0 are deuteriums.

In the tables below, the AltConf column contains the number of residues with at least one atom in alternate conformation and the Trace column contains the number of residues modelled with at most 2 atoms.

- Molecule 1 is a protein called phytochrome B.

Mol	Chain	Residues	Atoms					AltConf	Trace
			Total	C	N	O	S		
1	B	542	Total	C	N	O	S	0	0
			4211	2661	728	791	31		
1	A	477	Total	C	N	O	S	0	0
			3701	2347	641	683	30		

There are 10 discrepancies between the modelled and reference sequences:

Chain	Residue	Modelled	Actual	Comment	Reference
B	-4	GLY	-	expression tag	UNP P14713
B	-3	PRO	-	expression tag	UNP P14713
B	-2	LEU	-	expression tag	UNP P14713
B	-1	GLY	-	expression tag	UNP P14713
B	0	SER	-	expression tag	UNP P14713
A	-4	GLY	-	expression tag	UNP P14713
A	-3	PRO	-	expression tag	UNP P14713
A	-2	LEU	-	expression tag	UNP P14713
A	-1	GLY	-	expression tag	UNP P14713
A	0	SER	-	expression tag	UNP P14713

- Molecule 2 is a protein called phytochrome-interacting factor 6.

Mol	Chain	Residues	Atoms					AltConf	Trace
			Total	C	N	O	S		
2	C	48	Total	C	N	O	S	0	0
			402	247	70	81	4		

There are 5 discrepancies between the modelled and reference sequences:

Chain	Residue	Modelled	Actual	Comment	Reference
C	-4	GLY	-	expression tag	UNP Q8L5W7
C	-3	PRO	-	expression tag	UNP Q8L5W7
C	-2	LEU	-	expression tag	UNP Q8L5W7
C	-1	GLY	-	expression tag	UNP Q8L5W7
C	0	SER	-	expression tag	UNP Q8L5W7

LEU ASP
GLN ILE
ARG ILE
ASP ARG
MET ILE
PHE GLN
HIS GLN
SER LEU
SER LEU
ALA ALA
TRP GLU
PHE THR
SER LEU
LEU LEU
SER SER
GLU ILE
ILE ILE
ILE ARG
TYR ARG
SER LEU
ALA ALA
PRO VAL
SER CYS
SER ARG
GLN GLU
LYS LYS
ILE ILE
TRP TRP
VAL VAL
GLU ILE
ILE ILE
HIS HIS
SER LEU
ASN LEU
SER SER
GLN GLN
LEU LEU
SER SER
GLN GLN
LYS LYS
TYR TYR
ILE ILE
ARG ARG
MET MET
ALA ALA
SER ASP
GLY ILE
PHE ARG
SER ALA
TYR ALA
ILE ILE
ARG ARG
THR THR
GLN GLN
PHE PHE
LEU LEU
ARG ARG
MET MET
ALA ALA
PRO PRO
VAL VAL
CYS CYS
SER SER
GLY GLY
THR THR

LEU VAL
ARG ASP
SER ASP
MET PHE
HIS HIS
SER SER
SER ARG
TRP TRP
THR THR
SER LEU
PRO PRO
LEU LEU
SER SER
VAL VAL
CYS CYS
SER ARG
GLN GLU
LYS LYS
ILE ILE
TRP TRP
VAL VAL
GLU ILE
ILE ILE
HIS HIS
SER LEU
ASN LEU
SER SER
GLN GLN
LEU LEU
SER SER
GLY GLY
TYR TYR
ILE ILE
ARG ARG
MET MET
ALA ALA
SER ASP
GLY ILE
PHE ARG
SER ALA
TYR ALA
ILE ILE
ARG ARG
THR THR
GLN GLN
PHE PHE
LEU LEU
ARG ARG
MET MET
ALA ALA
PRO PRO
VAL VAL
CYS CYS
SER SER
GLY GLY
THR THR

ALA
SER
GLY
SER
GLY
MET
ASP
MET
MET
MET
MET
PRO
TYR

• Molecule 2: phytochrome-interacting factor 6



GLY PRO
LEU LEU
SER SER
MET MET
PHE PHE
LEU LEU
PRO PRO
THR THR
ASP ASP
TYR TYR
CYS CYS
C10
S54
N35
VAL VAL
SER SER
LEU LEU
H39
M40
L49
E53
K60
SER SER
ILE ILE
ILE ILE
HIS HIS
GLY GLY
GLY GLY
GLY GLY
ALA ALA
ILE ILE
THR THR
ASN ASN
LEU LEU
GLY GLY
ASP ASP
THR THR
GLN GLN
VAL VAL
VAL VAL
PRO PRO
GLN GLN
SER SER
HIS HIS
VAL VAL
ALA ALA
ALA ALA
ALA ALA
HIS HIS
GLU GLU
THR THR
ASN ASN

MET
LEU
GLU
SER
ASN
LYS
HIS
VAL
ASP

4 Experimental information

Property	Value	Source
EM reconstruction method	SINGLE PARTICLE	Depositor
Imposed symmetry	POINT, C1	Depositor
Number of particles used	325483	Depositor
Resolution determination method	FSC 0.143 CUT-OFF	Depositor
CTF correction method	PHASE FLIPPING AND AMPLITUDE CORRECTION	Depositor
Microscope	FEI TITAN KRIOS	Depositor
Voltage (kV)	300	Depositor
Electron dose ($e^-/\text{\AA}^2$)	50	Depositor
Minimum defocus (nm)	1000	Depositor
Maximum defocus (nm)	2000	Depositor
Magnification	105000	Depositor
Image detector	GATAN K3 (6k x 4k)	Depositor
Maximum map value	0.942	Depositor
Minimum map value	-0.629	Depositor
Average map value	0.001	Depositor
Map value standard deviation	0.027	Depositor
Recommended contour level	0.105	Depositor
Map size (Å)	204.0, 204.0, 204.0	wwPDB
Map dimensions	240, 240, 240	wwPDB
Map angles (°)	90.0, 90.0, 90.0	wwPDB
Pixel spacing (Å)	0.85, 0.85, 0.85	Depositor

5 Model quality [i](#)

5.1 Standard geometry [i](#)

Bond lengths and bond angles in the following residue types are not validated in this section: O6E

The Z score for a bond length (or angle) is the number of standard deviations the observed value is removed from the expected value. A bond length (or angle) with $|Z| > 5$ is considered an outlier worth inspection. RMSZ is the root-mean-square of all Z scores of the bond lengths (or angles).

Mol	Chain	Bond lengths		Bond angles	
		RMSZ	# Z >5	RMSZ	# Z >5
1	A	0.26	0/3775	0.51	1/5110 (0.0%)
1	B	0.25	0/4295	0.49	1/5812 (0.0%)
2	C	0.25	0/406	0.51	0/539
All	All	0.25	0/8476	0.50	2/11461 (0.0%)

There are no bond length outliers.

All (2) bond angle outliers are listed below:

Mol	Chain	Res	Type	Atoms	Z	Observed(°)	Ideal(°)
1	A	614	LEU	CA-CB-CG	5.88	128.81	115.30
1	B	453	ASP	CB-CG-OD1	5.15	122.94	118.30

There are no chirality outliers.

There are no planarity outliers.

5.2 Too-close contacts [i](#)

In the following table, the Non-H and H(model) columns list the number of non-hydrogen atoms and hydrogen atoms in the chain respectively. The H(added) column lists the number of hydrogen atoms added and optimized by MolProbity. The Clashes column lists the number of clashes within the asymmetric unit, whereas Symm-Clashes lists symmetry-related clashes.

Mol	Chain	Non-H	H(model)	H(added)	Clashes	Symm-Clashes
1	A	3701	0	3699	62	0
1	B	4211	0	4185	40	0
2	C	402	0	377	2	0
3	A	43	0	0	0	0
3	B	43	0	0	0	0
All	All	8400	0	8261	101	0

The all-atom clashscore is defined as the number of clashes found per 1000 atoms (including hydrogen atoms). The all-atom clashscore for this structure is 6.

All (101) close contacts within the same asymmetric unit are listed below, sorted by their clash magnitude.

Atom-1	Atom-2	Interatomic distance (Å)	Clash overlap (Å)
1:A:497:VAL:HA	1:A:500:LYS:HE2	1.59	0.82
1:B:275:VAL:HG22	1:B:400:VAL:HG22	1.62	0.81
1:A:205:LEU:HG	1:A:214:ILE:HG22	1.72	0.71
1:A:455:LEU:HD12	1:A:463:ILE:HD11	1.73	0.69
1:B:448:GLN:NE2	1:B:452:CYS:SG	2.65	0.68
1:A:580:HIS:CE1	1:A:582:ARG:HG3	2.30	0.66
1:B:177:ARG:NH1	2:C:53:GLU:O	2.29	0.65
1:A:611:GLN:O	1:A:615:ARG:HG2	1.98	0.63
1:B:129:ARG:NH1	1:B:160:GLY:O	2.31	0.63
1:A:475:LYS:NZ	1:A:597:GLN:OE1	2.35	0.59
1:B:480:ALA:HB3	1:B:551:PHE:HB2	1.84	0.59
1:A:474:VAL:HG13	1:A:603:GLU:HG2	1.83	0.59
1:B:379:GLY:O	1:B:393:SER:OG	2.21	0.58
1:A:586:GLN:O	1:A:590:GLU:HG3	2.03	0.58
1:B:544:ILE:HG22	1:B:545:THR:HG23	1.86	0.58
1:A:163:VAL:HA	1:A:166:LEU:HD12	1.86	0.57
1:B:189:PRO:HB3	1:B:204:ILE:HG13	1.85	0.57
1:A:134:SER:OG	1:A:136:ASN:OD1	2.21	0.57
1:A:323:MET:SD	1:A:415:ARG:NH1	2.78	0.56
1:A:320:ARG:HD3	1:A:376:ILE:HD12	1.87	0.56
1:A:336:GLN:HE22	1:A:343:SER:HA	1.71	0.56
1:A:185:THR:HG22	1:A:186:LEU:H	1.71	0.55
1:A:392:SER:OG	1:A:393:SER:N	2.39	0.55
1:A:563:TRP:HD1	1:A:585:PHE:CD2	2.25	0.54
1:A:182:ARG:O	1:A:207:ARG:NH1	2.37	0.54
1:B:431:MET:SD	1:A:431:MET:HA	2.48	0.53
1:A:580:HIS:HE1	1:A:582:ARG:HG3	1.73	0.53
1:A:284:GLY:HA3	1:A:303:TYR:CZ	2.45	0.52
1:A:377:ILE:HD11	1:A:395:ARG:HH21	1.72	0.52
1:B:60:GLN:CD	1:B:310:GLN:HE21	2.13	0.52
1:B:136:ASN:OD1	1:B:136:ASN:N	2.43	0.52
1:A:543:TYR:HA	1:A:549:PHE:HD1	1.75	0.52
1:A:546:LYS:HB2	1:A:547:ARG:NH1	2.24	0.52
1:B:428:GLN:O	1:B:431:MET:HB3	2.10	0.51
1:B:229:ALA:HA	1:B:232:VAL:HG22	1.92	0.51
1:B:125:GLU:HG2	1:B:212:VAL:HG23	1.92	0.51
1:A:118:GLY:HA3	1:A:351:LEU:HD21	1.92	0.51

Continued on next page...

Continued from previous page...

Atom-1	Atom-2	Interatomic distance (Å)	Clash overlap (Å)
1:A:271:ASP:HB2	1:A:404:HIS:HA	1.92	0.50
1:A:317:LYS:O	1:A:320:ARG:NH1	2.45	0.50
1:A:604:MET:O	1:A:608:HIS:ND1	2.45	0.50
1:A:293:ASP:OD1	1:A:293:ASP:N	2.39	0.50
1:A:497:VAL:HA	1:A:500:LYS:CE	2.37	0.50
1:A:129:ARG:HH22	1:A:160:GLY:CA	2.24	0.50
1:A:409:CYS:O	1:A:410:ILE:HG22	2.12	0.49
1:B:54:MET:SD	1:B:54:MET:N	2.80	0.49
1:B:500:LYS:O	1:B:504:GLU:HG2	2.14	0.48
1:A:208:ILE:C	1:A:210:VAL:H	2.17	0.48
1:B:519:ASP:OD1	1:B:598:PRO:HA	2.13	0.48
1:A:320:ARG:O	1:A:321:VAL:HG23	2.13	0.48
1:A:611:GLN:HA	1:A:614:LEU:HD23	1.96	0.47
1:B:79:LYS:HB3	1:B:79:LYS:HE3	1.71	0.47
1:A:467:SER:HB2	1:A:468:PRO:HD3	1.96	0.47
1:A:610:LEU:O	1:A:614:LEU:HD22	2.15	0.47
1:A:274:MET:HG2	1:A:289:GLU:HG3	1.98	0.46
1:B:442:LYS:HB2	1:B:442:LYS:HE3	1.65	0.46
1:A:586:GLN:HA	1:A:589:LEU:HB2	1.96	0.46
1:B:224:PRO:O	1:B:228:ILE:HG13	2.16	0.46
1:B:542:ALA:HB3	1:B:550:LEU:HB2	1.96	0.46
1:A:291:LYS:HE3	1:A:297:PRO:HB3	1.97	0.45
1:A:495:SER:OG	1:A:496:GLU:N	2.49	0.45
1:B:526:TYR:HD1	1:B:527:PRO:HD2	1.81	0.45
1:A:115:GLN:HE22	1:A:324:ILE:HA	1.82	0.45
1:B:252:ASP:N	1:B:252:ASP:OD1	2.48	0.45
1:A:275:VAL:HG22	1:A:400:VAL:HG22	1.98	0.45
1:B:83:TYR:OH	1:B:307:ASP:OD1	2.34	0.45
1:A:268:THR:HB	1:A:270:TYR:HD1	1.82	0.45
1:A:281:ASP:OD1	1:A:283:HIS:ND1	2.39	0.45
1:A:260:VAL:HG21	1:A:425:PHE:CD1	2.52	0.45
1:A:516:LEU:HB3	1:A:541:VAL:HG12	1.99	0.45
1:B:580:HIS:CD2	1:B:581:PRO:HD2	2.52	0.45
1:A:585:PHE:O	1:A:586:GLN:HG2	2.17	0.44
1:A:129:ARG:HH22	1:A:160:GLY:HA2	1.82	0.44
1:A:326:ASP:HB3	1:A:329:ALA:HB2	1.98	0.44
1:B:373:MET:SD	1:B:418:CYS:HB3	2.58	0.43
1:B:561:ILE:HG21	1:B:589:LEU:HD21	2.00	0.43
1:B:133:TYR:HE1	1:B:159:MET:HG2	1.82	0.43
1:A:470:ILE:HG22	1:A:552:TRP:HE1	1.83	0.43
1:B:336:GLN:HE22	1:B:343:SER:HA	1.83	0.43

Continued on next page...

Continued from previous page...

Atom-1	Atom-2	Interatomic distance (Å)	Clash overlap (Å)
1:B:161:THR:OG1	1:B:162:ASP:N	2.51	0.43
1:A:252:ASP:OD1	1:A:252:ASP:N	2.52	0.43
1:B:556:HIS:CE1	1:B:558:ALA:HB3	2.53	0.43
1:A:264:VAL:O	1:A:268:THR:OG1	2.32	0.42
1:B:186:LEU:C	1:A:233:GLN:HE21	2.23	0.42
1:B:535:ALA:O	1:B:555:SER:OG	2.21	0.42
1:B:452:CYS:SG	1:B:613:ILE:HG21	2.59	0.42
1:A:175:LEU:HD23	1:A:175:LEU:HA	1.93	0.42
1:A:470:ILE:H	1:A:470:ILE:HG13	1.73	0.41
1:B:197:THR:OG1	1:B:198:GLY:N	2.53	0.41
1:A:178:ALA:HA	1:A:187:LEU:HD13	2.02	0.41
1:A:268:THR:O	1:A:408:ARG:NH1	2.53	0.41
1:B:138:ARG:HG3	1:B:157:LEU:HD23	2.02	0.41
1:B:321:VAL:HG11	1:B:415:ARG:HG2	2.01	0.41
1:A:609:SER:O	1:A:613:ILE:HG12	2.20	0.41
2:C:49:LEU:HD23	2:C:49:LEU:HA	1.83	0.41
1:B:451:LEU:HD12	1:B:463:ILE:HB	2.03	0.40
1:B:461:ALA:O	1:B:464:VAL:HG22	2.21	0.40
1:B:521:LEU:HD13	1:B:526:TYR:HD2	1.85	0.40
1:A:208:ILE:HG13	1:A:210:VAL:H	1.87	0.40
1:A:454:MET:HE1	1:A:468:PRO:HB2	2.03	0.40
1:A:522:GLY:C	1:A:524:ALA:H	2.25	0.40
1:A:228:ILE:O	1:A:232:VAL:HG23	2.22	0.40

There are no symmetry-related clashes.

5.3 Torsion angles [i](#)

5.3.1 Protein backbone [i](#)

In the following table, the Percentiles column shows the percent Ramachandran outliers of the chain as a percentile score with respect to all PDB entries followed by that with respect to all EM entries.

The Analysed column shows the number of residues for which the backbone conformation was analysed, and the total number of residues.

Mol	Chain	Analysed	Favoured	Allowed	Outliers	Percentiles	
1	A	469/1177 (40%)	442 (94%)	27 (6%)	0	100	100
1	B	534/1177 (45%)	515 (96%)	19 (4%)	0	100	100

Continued on next page...

Continued from previous page...

Mol	Chain	Analysed	Favoured	Allowed	Outliers	Percentiles	
2	C	44/105 (42%)	42 (96%)	2 (4%)	0	100	100
All	All	1047/2459 (43%)	999 (95%)	48 (5%)	0	100	100

There are no Ramachandran outliers to report.

5.3.2 Protein sidechains [i](#)

In the following table, the Percentiles column shows the percent sidechain outliers of the chain as a percentile score with respect to all PDB entries followed by that with respect to all EM entries.

The Analysed column shows the number of residues for which the sidechain conformation was analysed, and the total number of residues.

Mol	Chain	Analysed	Rotameric	Outliers	Percentiles	
1	A	403/997 (40%)	384 (95%)	19 (5%)	22	52
1	B	460/997 (46%)	448 (97%)	12 (3%)	41	68
2	C	44/90 (49%)	43 (98%)	1 (2%)	45	70
All	All	907/2084 (44%)	875 (96%)	32 (4%)	33	61

All (32) residues with a non-rotameric sidechain are listed below:

Mol	Chain	Res	Type
1	B	92	TYR
1	B	109	GLN
1	B	129	ARG
1	B	138	ARG
1	B	179	PHE
1	B	182	ARG
1	B	291	LYS
1	B	322	ARG
1	B	323	MET
1	B	327	CYS
1	B	361	TYR
1	B	548	ASP
1	A	183	GLU
1	A	209	ASP
1	A	265	ARG
1	A	294	ASP
1	A	339	ARG

Continued on next page...

Continued from previous page...

Mol	Chain	Res	Type
1	A	365	MET
1	A	380	ASN
1	A	412	PHE
1	A	457	ARG
1	A	458	ASP
1	A	500	LYS
1	A	543	TYR
1	A	556	HIS
1	A	562	LYS
1	A	583	SER
1	A	593	LYS
1	A	605	ASP
1	A	616	ASP
1	A	619	LYS
2	C	60	LYS

Sometimes sidechains can be flipped to improve hydrogen bonding and reduce clashes. All (6) such sidechains are listed below:

Mol	Chain	Res	Type
1	B	109	GLN
1	B	310	GLN
1	B	448	GLN
1	B	580	HIS
1	A	115	GLN
1	A	336	GLN

5.3.3 RNA [i](#)

There are no RNA molecules in this entry.

5.4 Non-standard residues in protein, DNA, RNA chains [i](#)

There are no non-standard protein/DNA/RNA residues in this entry.

5.5 Carbohydrates [i](#)

There are no oligosaccharides in this entry.

5.6 Ligand geometry

2 ligands are modelled in this entry.

In the following table, the Counts columns list the number of bonds (or angles) for which Mogul statistics could be retrieved, the number of bonds (or angles) that are observed in the model and the number of bonds (or angles) that are defined in the Chemical Component Dictionary. The Link column lists molecule types, if any, to which the group is linked. The Z score for a bond length (or angle) is the number of standard deviations the observed value is removed from the expected value. A bond length (or angle) with $|Z| > 2$ is considered an outlier worth inspection. RMSZ is the root-mean-square of all Z scores of the bond lengths (or angles).

Mol	Type	Chain	Res	Link	Bond lengths			Bond angles		
					Counts	RMSZ	# Z > 2	Counts	RMSZ	# Z > 2
3	O6E	B	1201	1	42,46,46	0.99	3 (7%)	50,67,67	1.15	4 (8%)
3	O6E	A	1201	1	42,46,46	0.99	3 (7%)	50,67,67	1.15	4 (8%)

In the following table, the Chirals column lists the number of chiral outliers, the number of chiral centers analysed, the number of these observed in the model and the number defined in the Chemical Component Dictionary. Similar counts are reported in the Torsion and Rings columns. '-' means no outliers of that kind were identified.

Mol	Type	Chain	Res	Link	Chirals	Torsions	Rings
3	O6E	B	1201	1	-	10/25/74/74	0/4/4/4
3	O6E	A	1201	1	-	10/25/74/74	0/4/4/4

All (6) bond length outliers are listed below:

Mol	Chain	Res	Type	Atoms	Z	Observed(Å)	Ideal(Å)
3	B	1201	O6E	CAO-CAV	3.09	1.37	1.35
3	A	1201	O6E	CAO-CAV	3.01	1.37	1.35
3	B	1201	O6E	CAB-CBI	-3.01	1.39	1.47
3	A	1201	O6E	CAB-CBI	-2.97	1.39	1.47
3	A	1201	O6E	CBI-CBC	2.18	1.41	1.37
3	B	1201	O6E	CBI-CBC	2.15	1.41	1.37

All (8) bond angle outliers are listed below:

Mol	Chain	Res	Type	Atoms	Z	Observed(°)	Ideal(°)
3	B	1201	O6E	CAW-CAP-CBL	3.18	135.86	128.08
3	A	1201	O6E	CAO-CAV-NAE	-3.08	124.55	128.83
3	B	1201	O6E	CAO-CAV-NAE	-2.75	125.02	128.83
3	A	1201	O6E	CAW-CAP-CBL	2.68	134.63	128.08
3	B	1201	O6E	CAP-CAW-CBC	2.67	132.24	126.95

Continued on next page...

Continued from previous page...

Mol	Chain	Res	Type	Atoms	Z	Observed(°)	Ideal(°)
3	A	1201	O6E	CAP-CAW-CBC	2.46	131.83	126.95
3	B	1201	O6E	CBD-CBJ-CBN	2.25	104.71	101.34
3	A	1201	O6E	CBD-CBJ-CBN	2.19	104.61	101.34

There are no chirality outliers.

All (20) torsion outliers are listed below:

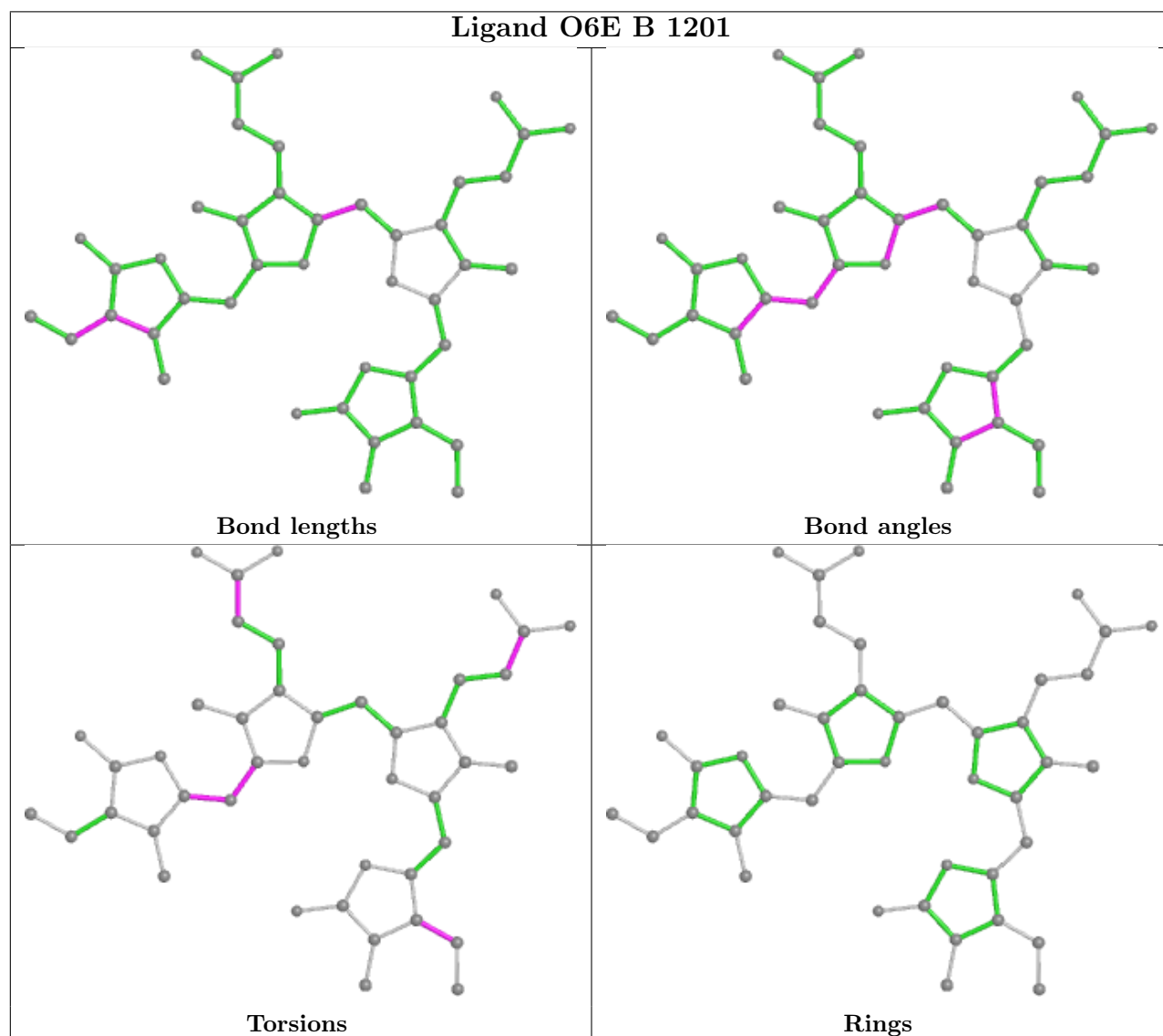
Mol	Chain	Res	Type	Atoms
3	B	1201	O6E	CAH-CAC-CBJ-CBN
3	A	1201	O6E	CAH-CAC-CBJ-CBN
3	B	1201	O6E	CBL-CAP-CAW-CBC
3	A	1201	O6E	CBL-CAP-CAW-CBC
3	B	1201	O6E	CBL-CAP-CAW-NAJ
3	A	1201	O6E	CBL-CAP-CAW-NAJ
3	B	1201	O6E	CAW-CAP-CBL-NAE
3	A	1201	O6E	CAW-CAP-CBL-NAE
3	B	1201	O6E	CAW-CAP-CBL-CBH
3	A	1201	O6E	CAW-CAP-CBL-CBH
3	B	1201	O6E	CAH-CAC-CBJ-CBD
3	A	1201	O6E	CAH-CAC-CBJ-CBD
3	A	1201	O6E	CAA-CAF-CAL-OBF
3	A	1201	O6E	CAD-CAI-CAM-OBA
3	A	1201	O6E	CAA-CAF-CAL-OAZ
3	A	1201	O6E	CAD-CAI-CAM-OBG
3	B	1201	O6E	CAA-CAF-CAL-OAZ
3	B	1201	O6E	CAD-CAI-CAM-OBG
3	B	1201	O6E	CAA-CAF-CAL-OBF
3	B	1201	O6E	CAD-CAI-CAM-OBA

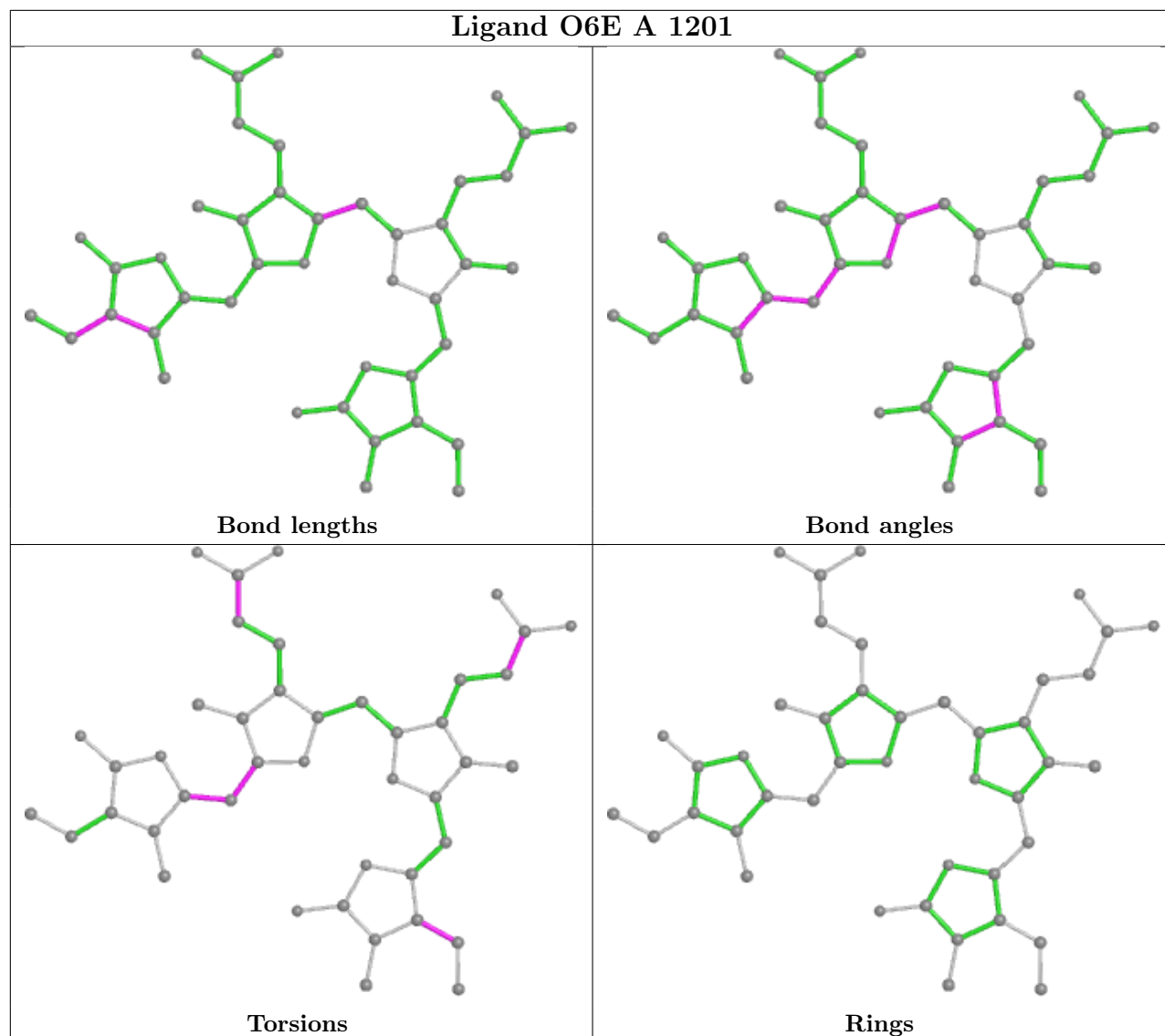
There are no ring outliers.

No monomer is involved in short contacts.

The following is a two-dimensional graphical depiction of Mogul quality analysis of bond lengths, bond angles, torsion angles, and ring geometry for all instances of the Ligand of Interest. In addition, ligands with molecular weight > 250 and outliers as shown on the validation Tables will also be included. For torsion angles, if less than 5% of the Mogul distribution of torsion angles is within 10 degrees of the torsion angle in question, then that torsion angle is considered an outlier. Any bond that is central to one or more torsion angles identified as an outlier by Mogul will be highlighted in the graph. For rings, the root-mean-square deviation (RMSD) between the ring in question and similar rings identified by Mogul is calculated over all ring torsion angles. If the average RMSD is greater than 60 degrees and the minimal RMSD between the ring in question and any Mogul-identified rings is also greater than 60 degrees, then that ring is considered an outlier.

The outliers are highlighted in purple. The color gray indicates Mogul did not find sufficient equivalents in the CSD to analyse the geometry.





5.7 Other polymers [i](#)

There are no such residues in this entry.

5.8 Polymer linkage issues [i](#)

There are no chain breaks in this entry.

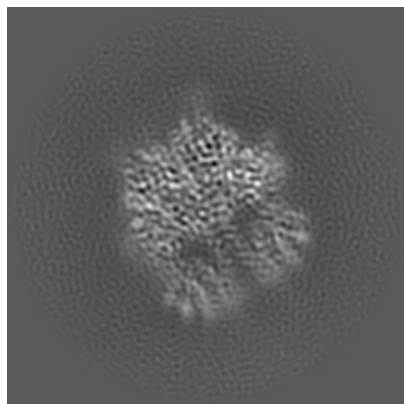
6 Map visualisation [i](#)

This section contains visualisations of the EMDB entry EMD-39108. These allow visual inspection of the internal detail of the map and identification of artifacts.

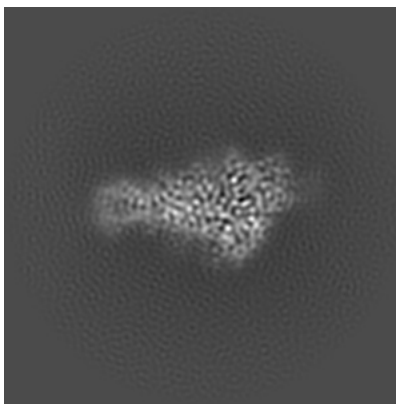
Images derived from a raw map, generated by summing the deposited half-maps, are presented below the corresponding image components of the primary map to allow further visual inspection and comparison with those of the primary map.

6.1 Orthogonal projections [i](#)

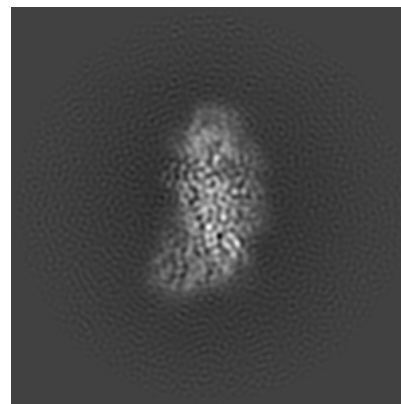
6.1.1 Primary map



X

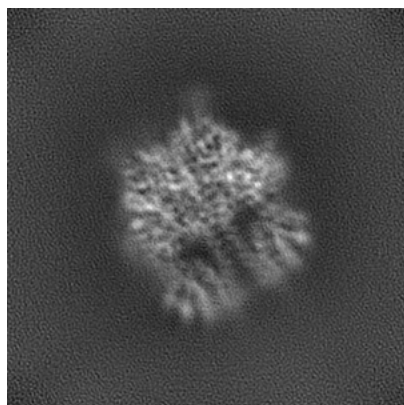


Y

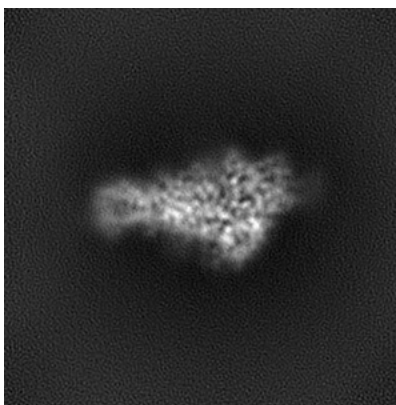


Z

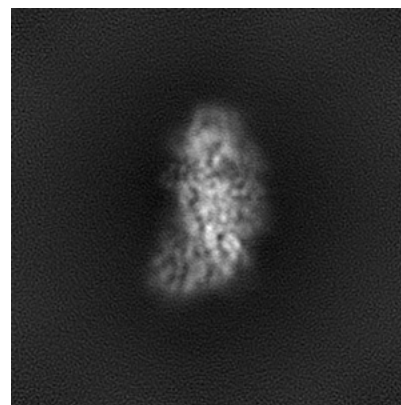
6.1.2 Raw map



X



Y

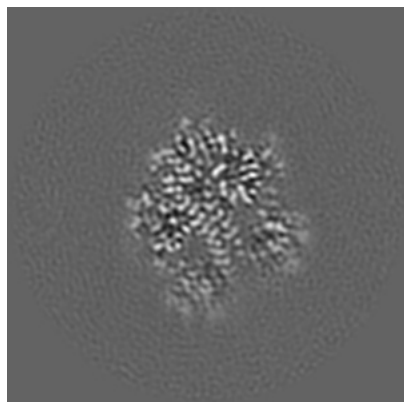


Z

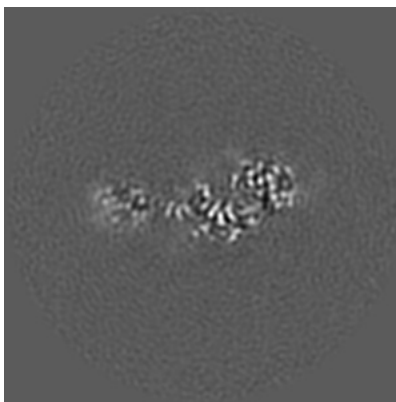
The images above show the map projected in three orthogonal directions.

6.2 Central slices [i](#)

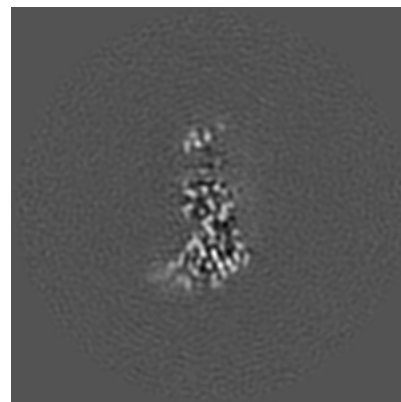
6.2.1 Primary map



X Index: 120

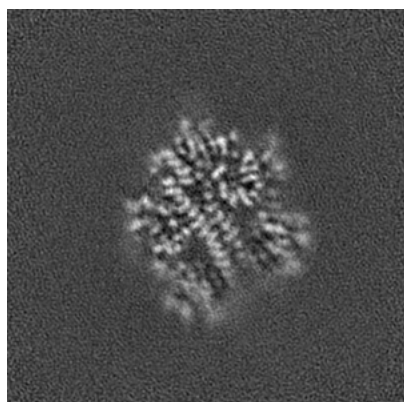


Y Index: 120

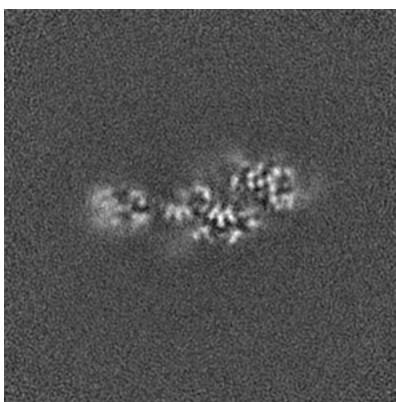


Z Index: 120

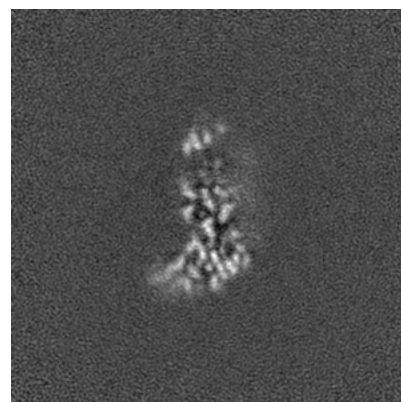
6.2.2 Raw map



X Index: 120



Y Index: 120

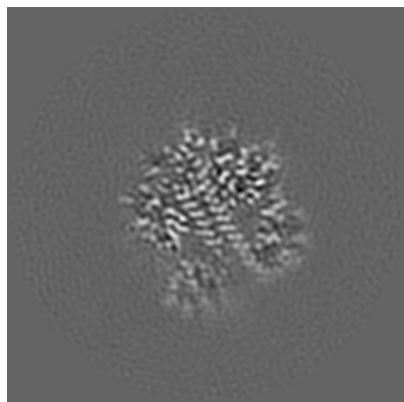


Z Index: 120

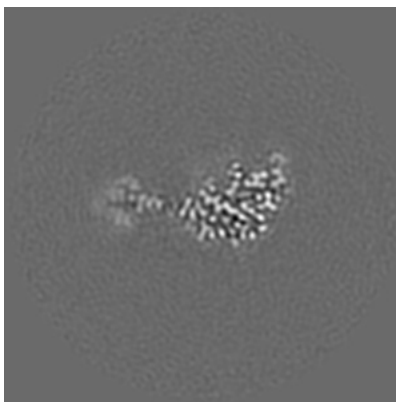
The images above show central slices of the map in three orthogonal directions.

6.3 Largest variance slices [i](#)

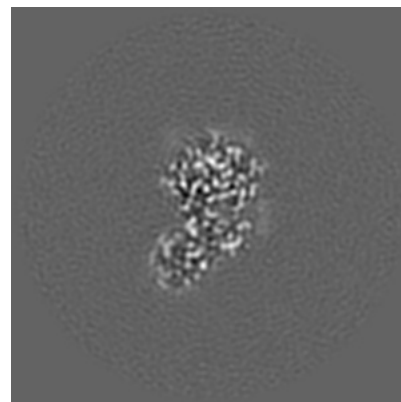
6.3.1 Primary map



X Index: 117

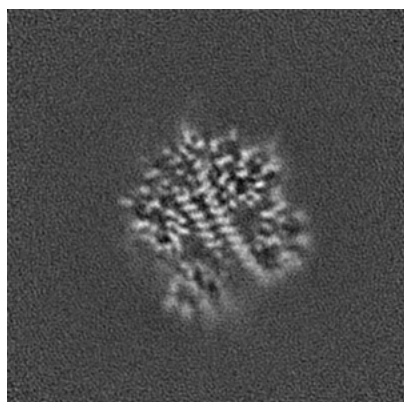


Y Index: 129

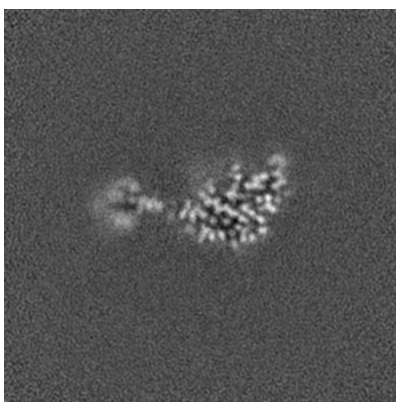


Z Index: 139

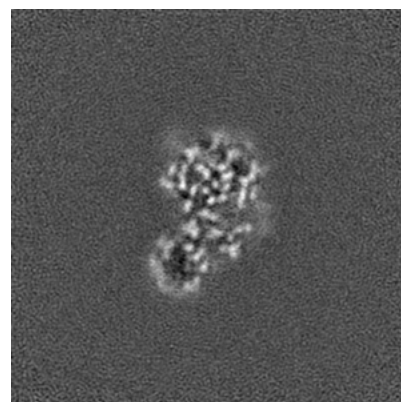
6.3.2 Raw map



X Index: 117



Y Index: 129

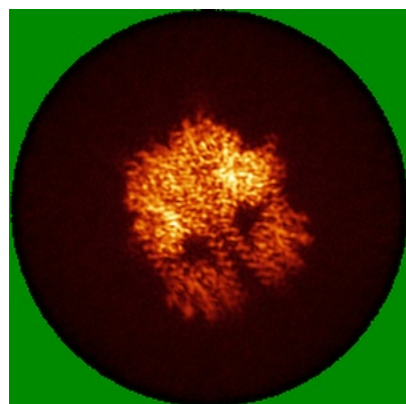


Z Index: 140

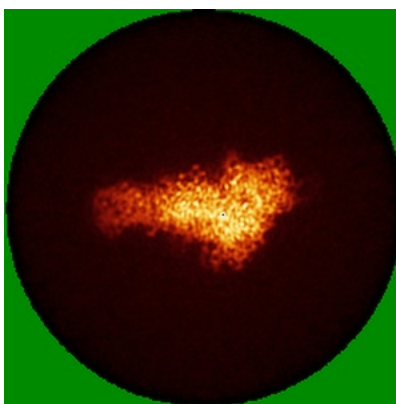
The images above show the largest variance slices of the map in three orthogonal directions.

6.4 Orthogonal standard-deviation projections (False-color) [i](#)

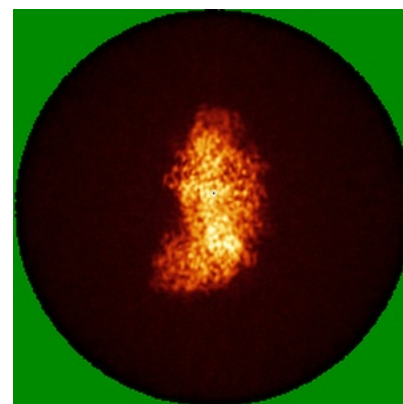
6.4.1 Primary map



X

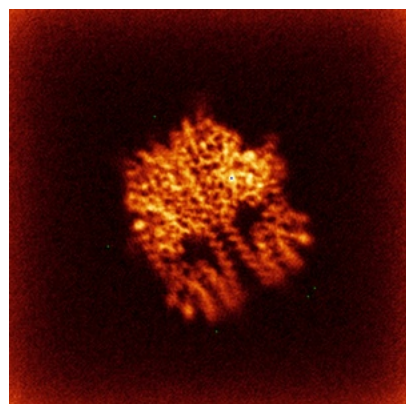


Y

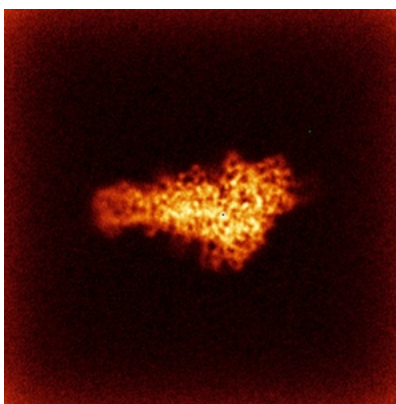


Z

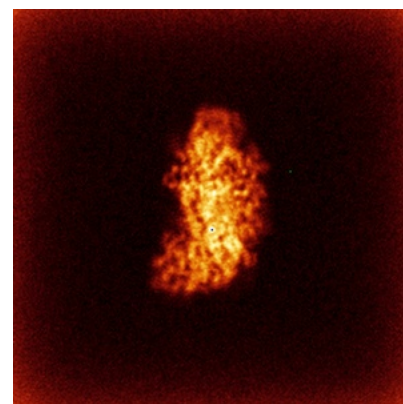
6.4.2 Raw map



X



Y

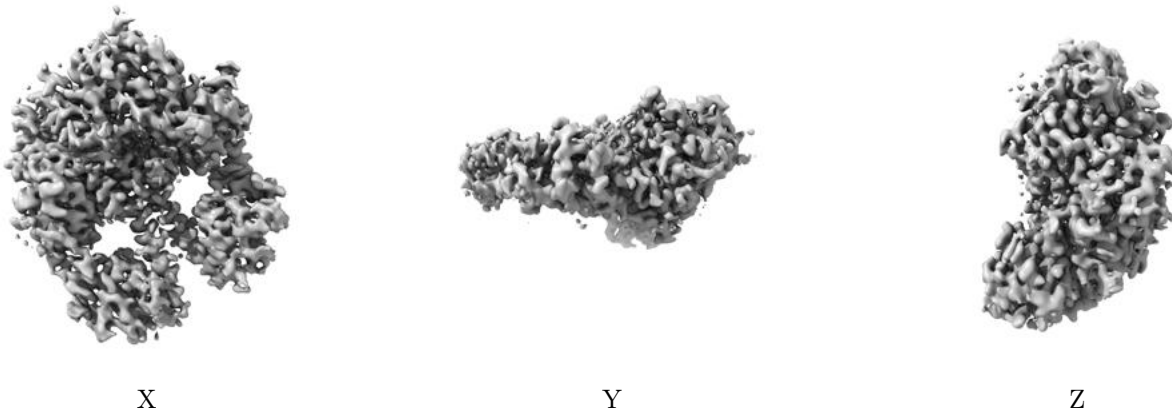


Z

The images above show the map standard deviation projections with false color in three orthogonal directions. Minimum values are shown in green, max in blue, and dark to light orange shades represent small to large values respectively.

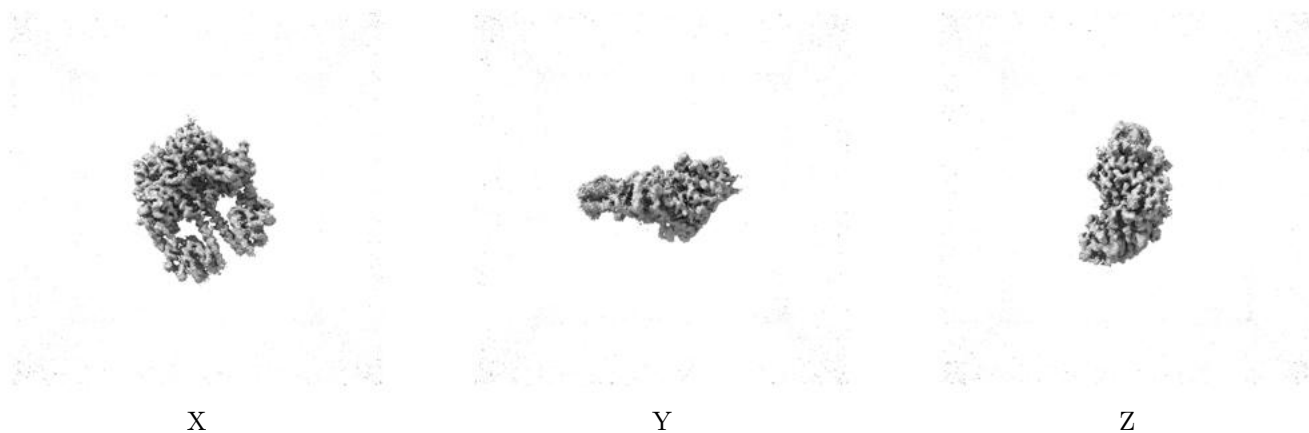
6.5 Orthogonal surface views [i](#)

6.5.1 Primary map



The images above show the 3D surface view of the map at the recommended contour level 0.105. These images, in conjunction with the slice images, may facilitate assessment of whether an appropriate contour level has been provided.

6.5.2 Raw map



These images show the 3D surface of the raw map. The raw map's contour level was selected so that its surface encloses the same volume as the primary map does at its recommended contour level.

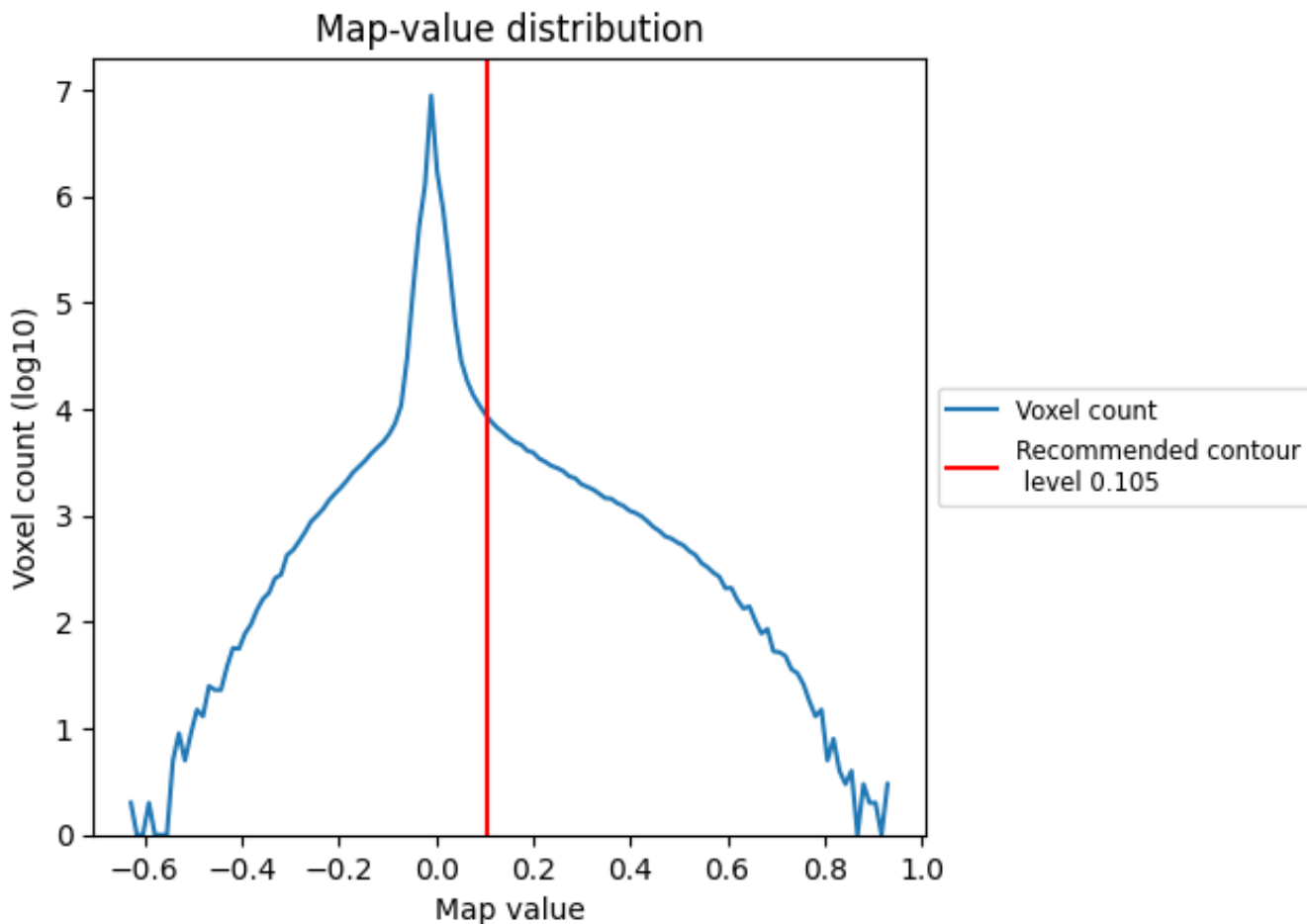
6.6 Mask visualisation [i](#)

This section was not generated. No masks/segmentation were deposited.

7 Map analysis [i](#)

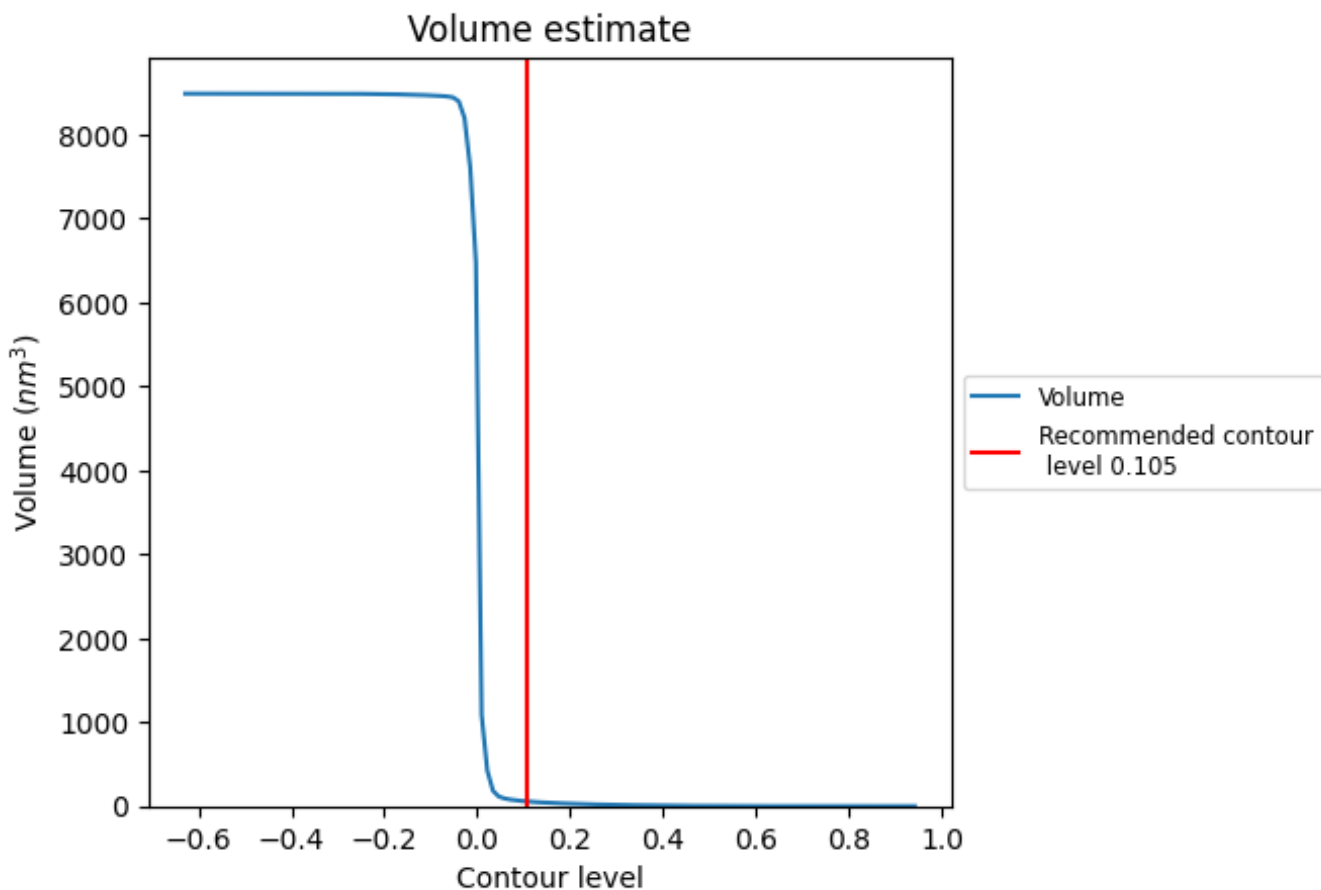
This section contains the results of statistical analysis of the map.

7.1 Map-value distribution [i](#)



The map-value distribution is plotted in 128 intervals along the x-axis. The y-axis is logarithmic. A spike in this graph at zero usually indicates that the volume has been masked.

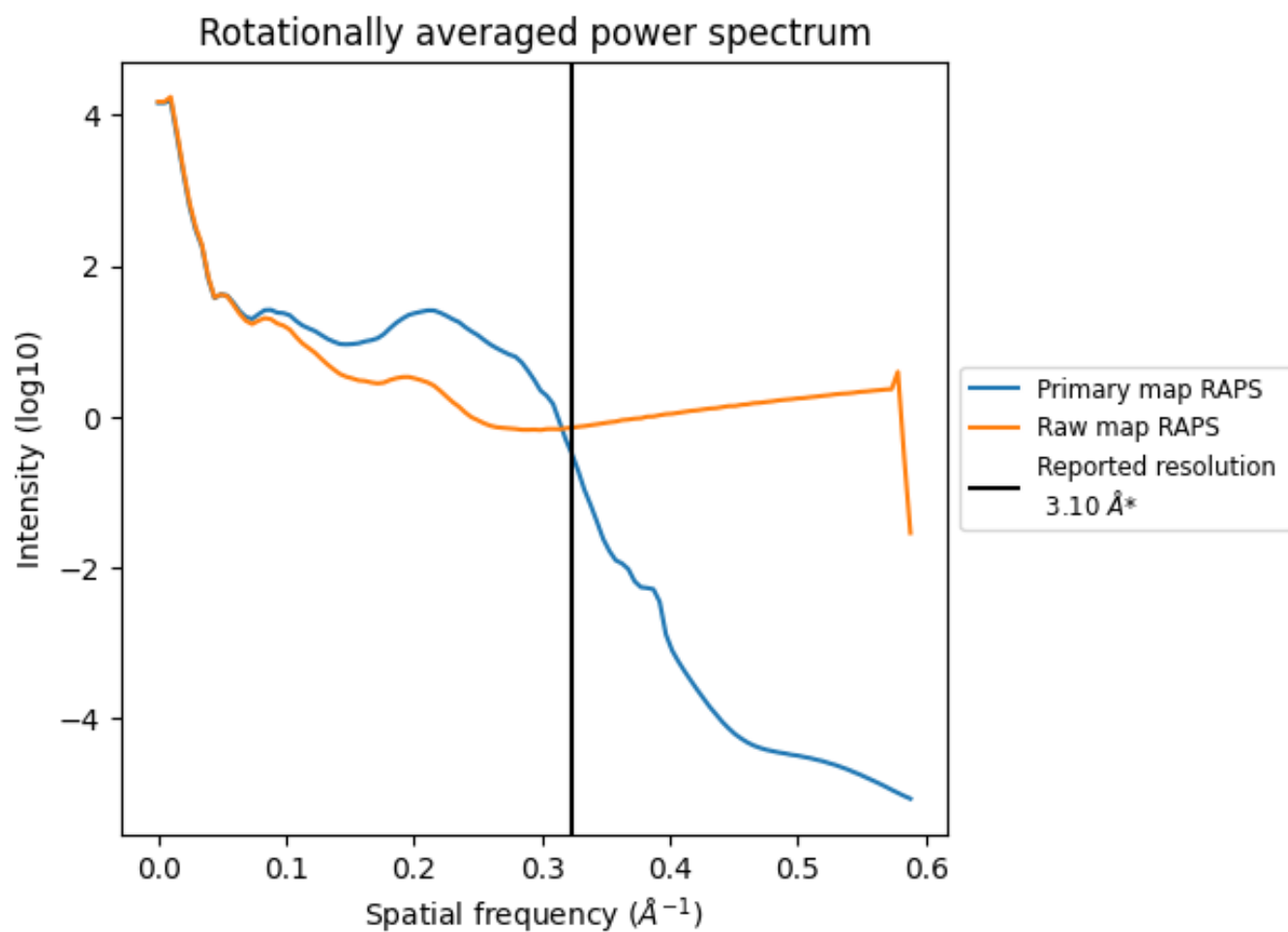
7.2 Volume estimate [i](#)



The volume at the recommended contour level is 57 nm^3 ; this corresponds to an approximate mass of 52 kDa.

The volume estimate graph shows how the enclosed volume varies with the contour level. The recommended contour level is shown as a vertical line and the intersection between the line and the curve gives the volume of the enclosed surface at the given level.

7.3 Rotationally averaged power spectrum i

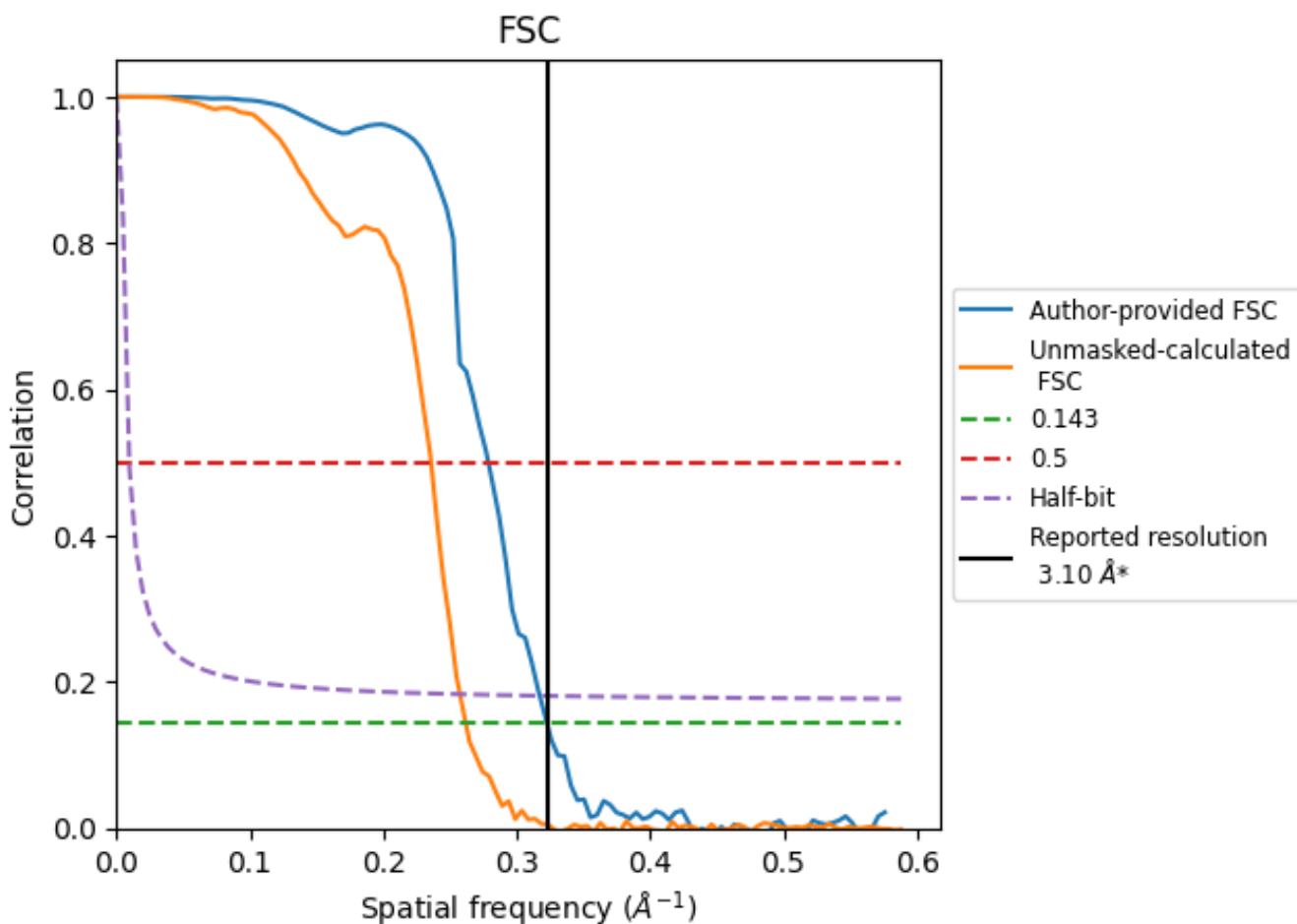


*Reported resolution corresponds to spatial frequency of 0.323 Å⁻¹

8 Fourier-Shell correlation [i](#)

Fourier-Shell Correlation (FSC) is the most commonly used method to estimate the resolution of single-particle and subtomogram-averaged maps. The shape of the curve depends on the imposed symmetry, mask and whether or not the two 3D reconstructions used were processed from a common reference. The reported resolution is shown as a black line. A curve is displayed for the half-bit criterion in addition to lines showing the 0.143 gold standard cut-off and 0.5 cut-off.

8.1 FSC [i](#)



*Reported resolution corresponds to spatial frequency of 0.323 \AA^{-1}

8.2 Resolution estimates [i](#)

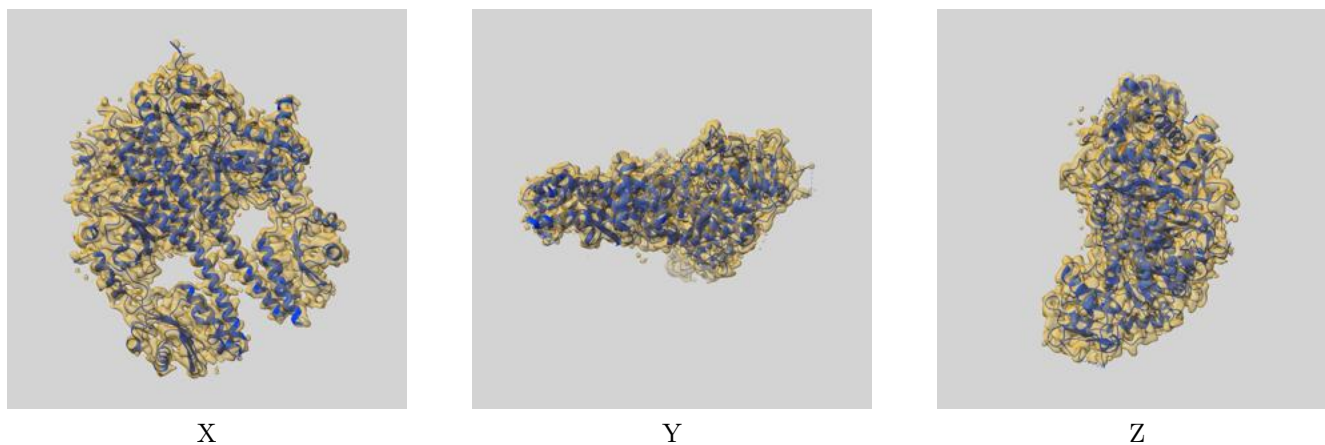
Resolution estimate (Å)	Estimation criterion (FSC cut-off)		
	0.143	0.5	Half-bit
Reported by author	3.10	-	-
Author-provided FSC curve	3.10	3.59	3.15
Unmasked-calculated*	3.82	4.24	3.88

*Resolution estimate based on FSC curve calculated by comparison of deposited half-maps. The value from deposited half-maps intersecting FSC 0.143 CUT-OFF 3.82 differs from the reported value 3.1 by more than 10 %

9 Map-model fit [i](#)

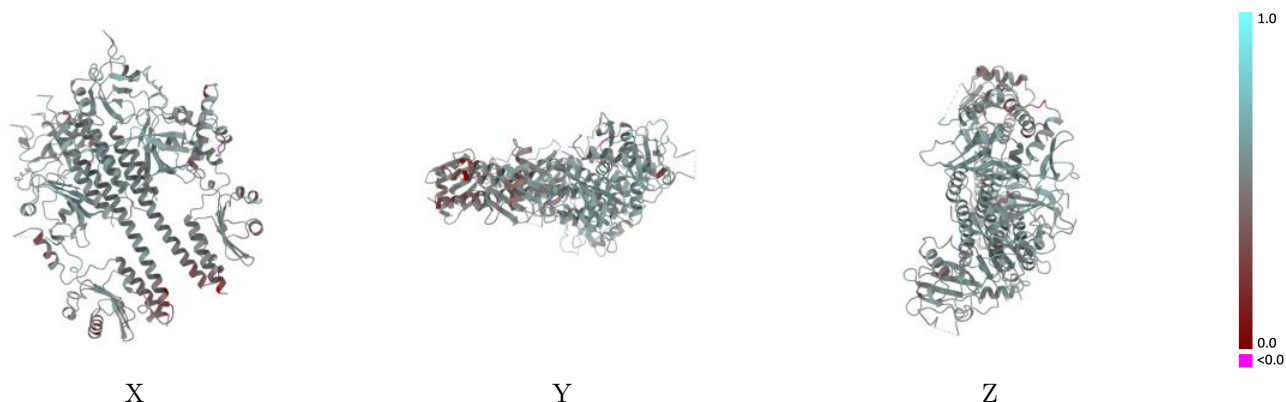
This section contains information regarding the fit between EMDB map EMD-39108 and PDB model 8YB4. Per-residue inclusion information can be found in section 3 on page 5.

9.1 Map-model overlay [i](#)



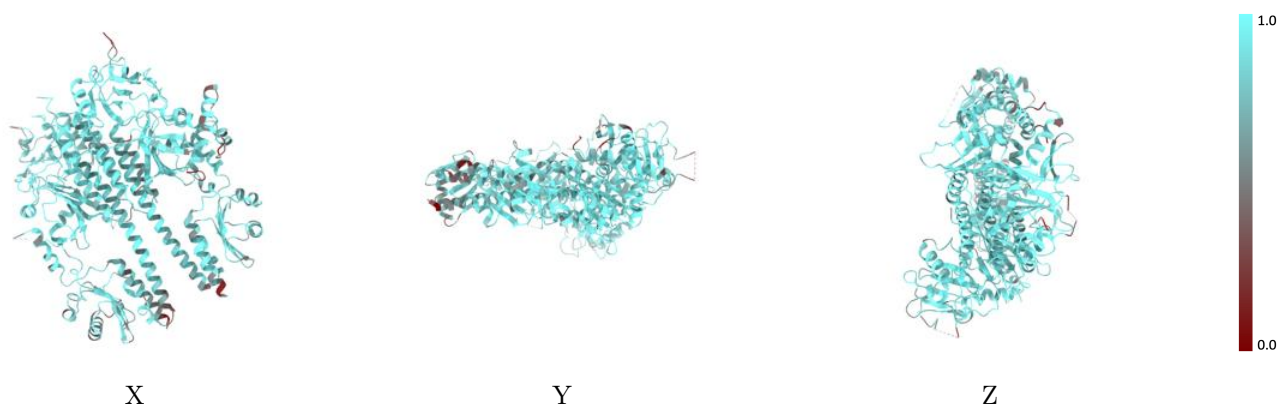
The images above show the 3D surface view of the map at the recommended contour level 0.105 at 50% transparency in yellow overlaid with a ribbon representation of the model coloured in blue. These images allow for the visual assessment of the quality of fit between the atomic model and the map.

9.2 Q-score mapped to coordinate model [i](#)



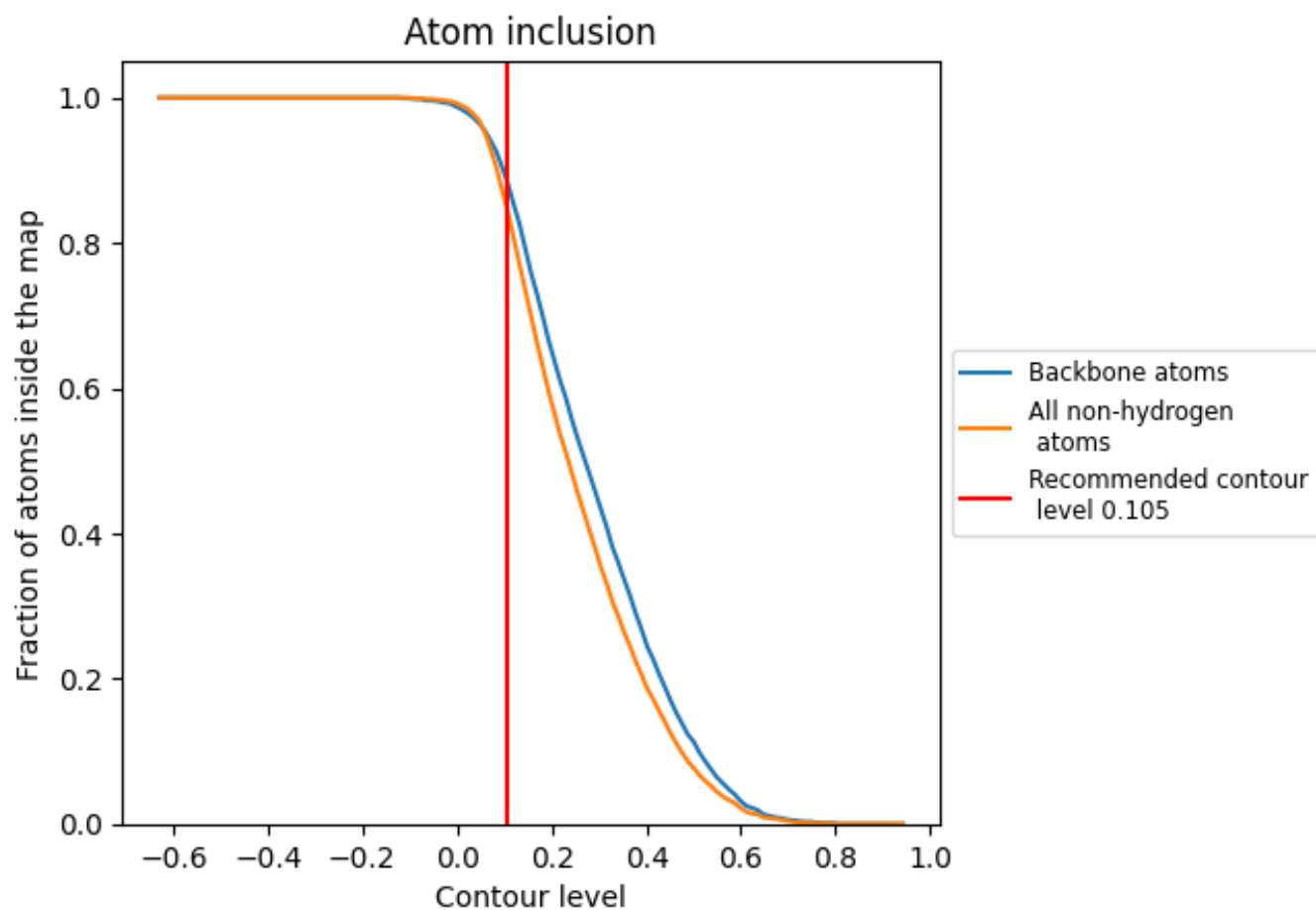
The images above show the model with each residue coloured according to its Q-score. This shows their resolvability in the map with higher Q-score values reflecting better resolvability. Please note: Q-score is calculating the resolvability of atoms, and thus high values are only expected at resolutions at which atoms can be resolved. Low Q-score values may therefore be expected for many entries.

9.3 Atom inclusion mapped to coordinate model [i](#)



The images above show the model with each residue coloured according to its atom inclusion. This shows to what extent they are inside the map at the recommended contour level (0.105).









9.4 Atom inclusion [i](#)



At the recommended contour level, 89% of all backbone atoms, 85% of all non-hydrogen atoms, are inside the map.

9.5 Map-model fit summary [i](#)

The table lists the average atom inclusion at the recommended contour level (0.105) and Q-score for the entire model and for each chain.

Chain	Atom inclusion	Q-score
All	 0.8490	 0.5220
A	 0.8370	 0.5110
B	 0.8600	 0.5290
C	 0.8370	 0.5510

