



Full wwPDB EM Validation Report ⓘ

Nov 13, 2024 – 10:45 AM JST

PDB ID : 8YF2
EMDB ID : EMD-39208
Title : Cryo-EM structure of SARS-CoV-2 prototype RBD in complex with raccoon dog ACE2 (local refinement)
Authors : Li, L.J.; Luo, C.L.; Qi, J.X.; Gao, G.F.
Deposited on : 2024-02-23
Resolution : 2.64 Å(reported)

This is a Full wwPDB EM Validation Report for a publicly released PDB entry.

We welcome your comments at validation@mail.wwpdb.org

A user guide is available at

<https://www.wwpdb.org/validation/2017/EMValidationReportHelp>

with specific help available everywhere you see the ⓘ symbol.

The types of validation reports are described at

<http://www.wwpdb.org/validation/2017/FAQs#types>.

The following versions of software and data (see [references ⓘ](#)) were used in the production of this report:

EMDB validation analysis : **FAILED**
Mogul : 1.8.5 (274361), CSD as541be (2020)
MolProbity : 4.02b-467
buster-report : 1.1.7 (2018)
Percentile statistics : 20231227.v01 (using entries in the PDB archive December 27th 2023)
MapQ : **FAILED**
Ideal geometry (proteins) : Engh & Huber (2001)
Ideal geometry (DNA, RNA) : Parkinson et al. (1996)
Validation Pipeline (wwPDB-VP) : 2.39

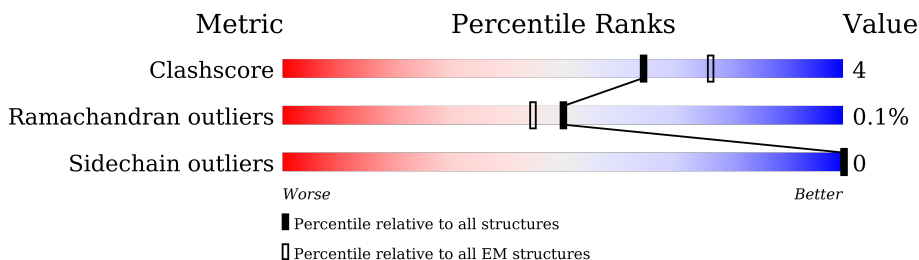
1 Overall quality at a glance i

The following experimental techniques were used to determine the structure:

ELECTRON MICROSCOPY

The reported resolution of this entry is 2.64 Å.

Percentile scores (ranging between 0-100) for global validation metrics of the entry are shown in the following graphic. The table shows the number of entries on which the scores are based.



Metric	Whole archive (#Entries)	EM structures (#Entries)
Clashscore	210492	15764
Ramachandran outliers	207382	16835
Sidechain outliers	206894	16415

The table below summarises the geometric issues observed across the polymeric chains and their fit to the map. The red, orange, yellow and green segments of the bar indicate the fraction of residues that contain outliers for ≥ 3 , 2, 1 and 0 types of geometric quality criteria respectively. A grey segment represents the fraction of residues that are not modelled. The numeric value for each fraction is indicated below the corresponding segment, with a dot representing fractions $\leq 5\%$.

Mol	Chain	Length	Quality of chain
1	B	229	78% (Green), 7% (Yellow), 15% (Grey)
2	A	605	86% (Green), 11% (Yellow), 3% (Grey)
3	C	2	50% (Green), 50% (Yellow)
3	D	2	100% (Green)
3	E	2	100% (Green)
3	F	2	50% (Green), 50% (Yellow)

2 Entry composition

There are 5 unique types of molecules in this entry. The entry contains 6504 atoms, of which 0 are hydrogens and 0 are deuteriums.

In the tables below, the AltConf column contains the number of residues with at least one atom in alternate conformation and the Trace column contains the number of residues modelled with at most 2 atoms.

- Molecule 1 is a protein called Spike protein S1.

Mol	Chain	Residues	Atoms					AltConf	Trace
			Total	C	N	O	S		
1	B	194	1537	987	256	286	8	0	0

There are 6 discrepancies between the modelled and reference sequences:

Chain	Residue	Modelled	Actual	Comment	Reference
B	542	HIS	-	expression tag	UNP P0DTC2
B	543	HIS	-	expression tag	UNP P0DTC2
B	544	HIS	-	expression tag	UNP P0DTC2
B	545	HIS	-	expression tag	UNP P0DTC2
B	546	HIS	-	expression tag	UNP P0DTC2
B	547	HIS	-	expression tag	UNP P0DTC2

- Molecule 2 is a protein called Angiotensin-converting enzyme.

Mol	Chain	Residues	Atoms					AltConf	Trace
			Total	C	N	O	S		
2	A	589	4840	3100	801	911	28	0	0

There are 6 discrepancies between the modelled and reference sequences:

Chain	Residue	Modelled	Actual	Comment	Reference
A	618	HIS	-	expression tag	UNP B4XEP4
A	619	HIS	-	expression tag	UNP B4XEP4
A	620	HIS	-	expression tag	UNP B4XEP4
A	621	HIS	-	expression tag	UNP B4XEP4
A	622	HIS	-	expression tag	UNP B4XEP4
A	623	HIS	-	expression tag	UNP B4XEP4

- Molecule 3 is an oligosaccharide called 2-acetamido-2-deoxy-beta-D-glucopyranose-(1-4)-2-acetamido-2-deoxy-beta-D-glucopyranose.

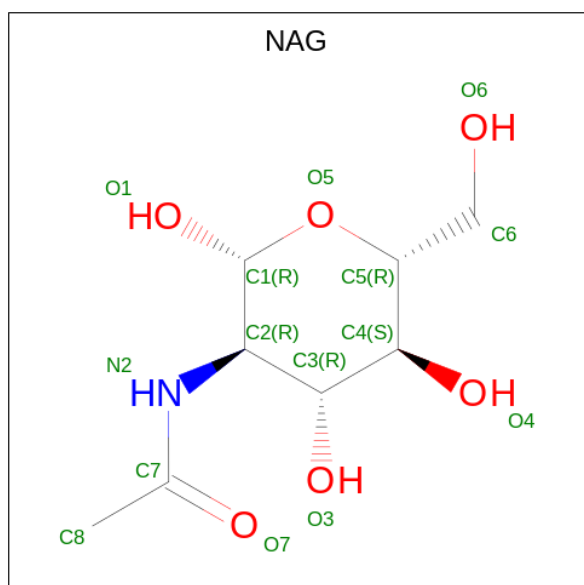


Mol	Chain	Residues	Atoms				AltConf	Trace
			Total	C	N	O		
3	C	2	28	16	2	10	0	0
3	D	2	28	16	2	10	0	0
3	E	2	28	16	2	10	0	0
3	F	2	28	16	2	10	0	0

- Molecule 4 is ZINC ION (three-letter code: ZN) (formula: Zn) (labeled as "Ligand of Interest" by depositor).

Mol	Chain	Residues	Atoms		AltConf
			Total	Zn	
4	A	1	1	1	0

- Molecule 5 is 2-acetamido-2-deoxy-beta-D-glucopyranose (three-letter code: NAG) (formula: C₈H₁₅NO₆) (labeled as "Ligand of Interest" by depositor).



Mol	Chain	Residues	Atoms				AltConf
			Total	C	N	O	
5	A	1	14	8	1	5	0

- Molecule 3: 2-acetamido-2-deoxy-beta-D-glucofuranose-(1-4)-2-acetamido-2-deoxy-beta-D-glucofuranose

Chain E:  100%

MAG1
MAG2

- Molecule 3: 2-acetamido-2-deoxy-beta-D-glucofuranose-(1-4)-2-acetamido-2-deoxy-beta-D-glucofuranose

Chain F:  50% 50%

MAG1
MAG2

4 Experimental information

Property	Value	Source
EM reconstruction method	SINGLE PARTICLE	Depositor
Imposed symmetry	POINT, Not provided	
Number of particles used	392889	Depositor
Resolution determination method	FSC 0.143 CUT-OFF	Depositor
CTF correction method	PHASE FLIPPING AND AMPLITUDE CORRECTION	Depositor
Microscope	TFS KRIOS	Depositor
Voltage (kV)	300	Depositor
Electron dose ($e^-/\text{\AA}^2$)	60	Depositor
Minimum defocus (nm)	1000	Depositor
Maximum defocus (nm)	2000	Depositor
Magnification	Not provided	
Image detector	GATAN K3 (6k x 4k)	Depositor

5 Model quality

5.1 Standard geometry

Bond lengths and bond angles in the following residue types are not validated in this section: NAG, ZN

The Z score for a bond length (or angle) is the number of standard deviations the observed value is removed from the expected value. A bond length (or angle) with $|Z| > 5$ is considered an outlier worth inspection. RMSZ is the root-mean-square of all Z scores of the bond lengths (or angles).

Mol	Chain	Bond lengths		Bond angles	
		RMSZ	# Z >5	RMSZ	# Z >5
1	B	0.27	0/1581	0.51	0/2151
2	A	0.26	0/4981	0.45	0/6767
All	All	0.26	0/6562	0.47	0/8918

There are no bond length outliers.

There are no bond angle outliers.

There are no chirality outliers.

There are no planarity outliers.

5.2 Too-close contacts

In the following table, the Non-H and H(model) columns list the number of non-hydrogen atoms and hydrogen atoms in the chain respectively. The H(added) column lists the number of hydrogen atoms added and optimized by MolProbity. The Clashes column lists the number of clashes within the asymmetric unit, whereas Symm-Clashes lists symmetry-related clashes.

Mol	Chain	Non-H	H(model)	H(added)	Clashes	Symm-Clashes
1	B	1537	0	1459	9	0
2	A	4840	0	4602	41	0
3	C	28	0	25	0	0
3	D	28	0	25	0	0
3	E	28	0	25	0	0
3	F	28	0	25	0	0
4	A	1	0	0	0	0
5	A	14	0	13	0	0
All	All	6504	0	6174	49	0

The all-atom clashscore is defined as the number of clashes found per 1000 atoms (including hydrogen atoms). The all-atom clashscore for this structure is 4.

All (49) close contacts within the same asymmetric unit are listed below, sorted by their clash magnitude.

Atom-1	Atom-2	Interatomic distance (Å)	Clash overlap (Å)
2:A:169:ARG:HH22	2:A:478:TRP:HE1	1.36	0.73
1:B:361:CYS:SG	1:B:362:VAL:N	2.64	0.71
2:A:157:ASP:HB3	2:A:160:GLU:HB2	1.79	0.64
1:B:350:VAL:HG21	1:B:418:ILE:HD11	1.80	0.63
2:A:177:ARG:NH1	2:A:495:GLU:O	2.31	0.62
2:A:243:TYR:HA	2:A:246:THR:HG22	1.86	0.57
2:A:98:ARG:NH2	2:A:210:GLU:OE1	2.38	0.54
2:A:243:TYR:O	2:A:247:LYS:HG2	2.08	0.53
2:A:318:VAL:HG23	2:A:320:LEU:HD13	1.92	0.52
2:A:156:LYS:HE2	2:A:281:LEU:HD21	1.92	0.51
2:A:95:ARG:NH2	2:A:565:PRO:HD3	2.25	0.51
2:A:132:ALA:HA	2:A:171:GLU:OE1	2.11	0.50
1:B:362:VAL:HB	1:B:526:GLY:HA2	1.94	0.49
1:B:403:ARG:NH2	1:B:405:ASP:OD2	2.45	0.49
1:B:493:GLN:HE22	2:A:34:TYR:HB3	1.79	0.48
2:A:378:HIS:HD1	2:A:401:HIS:CE1	2.32	0.48
2:A:111:ASP:OD1	2:A:112:LYS:N	2.47	0.47
2:A:201:ASP:OD2	2:A:219:ARG:NH2	2.47	0.47
2:A:95:ARG:HH12	2:A:211:TRP:HZ3	1.62	0.47
1:B:422:ASN:HD21	1:B:454:ARG:H	1.60	0.47
2:A:263:PRO:HG2	2:A:266:LEU:HD12	1.96	0.46
1:B:395:VAL:HG12	1:B:515:PHE:HD1	1.79	0.46
2:A:245:ARG:NH2	2:A:603:PHE:O	2.49	0.46
2:A:25:VAL:HG21	2:A:88:ILE:HD11	1.99	0.45
2:A:284:PRO:HD3	2:A:440:LEU:HD23	1.98	0.45
2:A:313:LYS:HA	2:A:316:VAL:HG12	1.99	0.45
2:A:54:ILE:HD13	2:A:342:VAL:HA	1.97	0.45
2:A:160:GLU:HA	2:A:163:TRP:CD1	2.51	0.44
2:A:509:ASP:N	2:A:509:ASP:OD1	2.50	0.44
1:B:526:GLY:HA3	1:B:527:PRO:HD3	1.88	0.44
2:A:532:ILE:HD13	2:A:553:LYS:HD3	2.00	0.44
1:B:485:GLY:H	1:B:488:CYS:HB2	1.83	0.43
2:A:168:TRP:HE1	2:A:502:SER:HB2	1.83	0.43
2:A:244:VAL:O	2:A:245:ARG:C	2.56	0.43
2:A:367:ASP:OD1	2:A:368:ASP:N	2.52	0.43
2:A:570:LEU:O	2:A:574:VAL:HG12	2.19	0.42
2:A:344:CYS:HA	2:A:359:LYS:HD3	2.02	0.42
2:A:524:GLN:HG3	2:A:574:VAL:HG21	2.01	0.42
2:A:302:TRP:HA	2:A:306:LYS:HD2	2.01	0.42
2:A:211:TRP:NE1	2:A:568:TYR:OH	2.50	0.42

Continued on next page...

Continued from previous page...

Atom-1	Atom-2	Interatomic distance (Å)	Clash overlap (Å)
2:A:421:ILE:HD13	2:A:421:ILE:HA	1.91	0.42
2:A:414:THR:HG23	2:A:417:HIS:H	1.86	0.41
2:A:307:ILE:HD12	2:A:369:PHE:HD1	1.85	0.41
2:A:184:VAL:HG23	2:A:464:PHE:HD1	1.84	0.41
2:A:450:LEU:HB2	2:A:451:PRO:HD3	2.02	0.41
2:A:145:GLU:HB3	2:A:146:PRO:HD3	2.03	0.41
2:A:143:LEU:HD23	2:A:144:LEU:N	2.36	0.41
2:A:243:TYR:O	2:A:246:THR:HG22	2.21	0.40
2:A:95:ARG:HH22	2:A:565:PRO:HD3	1.84	0.40

There are no symmetry-related clashes.

5.3 Torsion angles [i](#)

5.3.1 Protein backbone [i](#)

In the following table, the Percentiles column shows the percent Ramachandran outliers of the chain as a percentile score with respect to all PDB entries followed by that with respect to all EM entries.

The Analysed column shows the number of residues for which the backbone conformation was analysed, and the total number of residues.

Mol	Chain	Analysed	Favoured	Allowed	Outliers	Percentiles	
1	B	192/229 (84%)	182 (95%)	10 (5%)	0	100	100
2	A	585/605 (97%)	567 (97%)	17 (3%)	1 (0%)	44	59
All	All	777/834 (93%)	749 (96%)	27 (4%)	1 (0%)	50	65

All (1) Ramachandran outliers are listed below:

Mol	Chain	Res	Type
2	A	54	ILE

5.3.2 Protein sidechains [i](#)

In the following table, the Percentiles column shows the percent sidechain outliers of the chain as a percentile score with respect to all PDB entries followed by that with respect to all EM entries.

The Analysed column shows the number of residues for which the sidechain conformation was

analysed, and the total number of residues.

Mol	Chain	Analysed	Rotameric	Outliers	Percentiles	
1	B	167/202 (83%)	167 (100%)	0	100	100
2	A	523/539 (97%)	523 (100%)	0	100	100
All	All	690/741 (93%)	690 (100%)	0	100	100

There are no protein residues with a non-rotameric sidechain to report.

Sometimes sidechains can be flipped to improve hydrogen bonding and reduce clashes. All (1) such sidechains are listed below:

Mol	Chain	Res	Type
2	A	599	ASN

5.3.3 RNA [i](#)

There are no RNA molecules in this entry.

5.4 Non-standard residues in protein, DNA, RNA chains [i](#)

There are no non-standard protein/DNA/RNA residues in this entry.

5.5 Carbohydrates [i](#)

8 monosaccharides are modelled in this entry.

In the following table, the Counts columns list the number of bonds (or angles) for which Mogul statistics could be retrieved, the number of bonds (or angles) that are observed in the model and the number of bonds (or angles) that are defined in the Chemical Component Dictionary. The Link column lists molecule types, if any, to which the group is linked. The Z score for a bond length (or angle) is the number of standard deviations the observed value is removed from the expected value. A bond length (or angle) with $|Z| > 2$ is considered an outlier worth inspection. RMSZ is the root-mean-square of all Z scores of the bond lengths (or angles).

Mol	Type	Chain	Res	Link	Bond lengths			Bond angles		
					Counts	RMSZ	$\# Z > 2$	Counts	RMSZ	$\# Z > 2$
3	NAG	C	1	3,1	14,14,15	0.47	0	17,19,21	0.80	1 (5%)
3	NAG	C	2	3	14,14,15	0.35	0	17,19,21	0.53	0
3	NAG	D	1	2,3	14,14,15	0.19	0	17,19,21	0.42	0
3	NAG	D	2	3	14,14,15	0.24	0	17,19,21	0.41	0
3	NAG	E	1	2,3	14,14,15	0.19	0	17,19,21	0.47	0
3	NAG	E	2	3	14,14,15	0.24	0	17,19,21	0.43	0

Mol	Type	Chain	Res	Link	Bond lengths			Bond angles		
					Counts	RMSZ	# Z > 2	Counts	RMSZ	# Z > 2
3	NAG	F	1	2,3	14,14,15	0.43	0	17,19,21	0.95	1 (5%)
3	NAG	F	2	3	14,14,15	0.39	0	17,19,21	0.42	0

In the following table, the Chirals column lists the number of chiral outliers, the number of chiral centers analysed, the number of these observed in the model and the number defined in the Chemical Component Dictionary. Similar counts are reported in the Torsion and Rings columns. '-' means no outliers of that kind were identified.

Mol	Type	Chain	Res	Link	Chirals	Torsions	Rings
3	NAG	C	1	3,1	-	2/6/23/26	0/1/1/1
3	NAG	C	2	3	-	1/6/23/26	0/1/1/1
3	NAG	D	1	2,3	-	2/6/23/26	0/1/1/1
3	NAG	D	2	3	-	1/6/23/26	0/1/1/1
3	NAG	E	1	2,3	-	1/6/23/26	0/1/1/1
3	NAG	E	2	3	-	0/6/23/26	0/1/1/1
3	NAG	F	1	2,3	-	5/6/23/26	0/1/1/1
3	NAG	F	2	3	-	0/6/23/26	0/1/1/1

There are no bond length outliers.

All (2) bond angle outliers are listed below:

Mol	Chain	Res	Type	Atoms	Z	Observed(°)	Ideal(°)
3	C	1	NAG	C1-O5-C5	2.55	115.64	112.19
3	F	1	NAG	C4-C3-C2	2.54	114.75	111.02

There are no chirality outliers.

All (12) torsion outliers are listed below:

Mol	Chain	Res	Type	Atoms
3	F	1	NAG	C3-C2-N2-C7
3	F	1	NAG	C8-C7-N2-C2
3	F	1	NAG	O7-C7-N2-C2
3	F	1	NAG	C4-C5-C6-O6
3	D	1	NAG	O5-C5-C6-O6
3	C	1	NAG	C8-C7-N2-C2
3	C	1	NAG	O7-C7-N2-C2
3	F	1	NAG	O5-C5-C6-O6
3	D	1	NAG	C4-C5-C6-O6
3	E	1	NAG	O5-C5-C6-O6
3	D	2	NAG	O5-C5-C6-O6

Continued on next page...

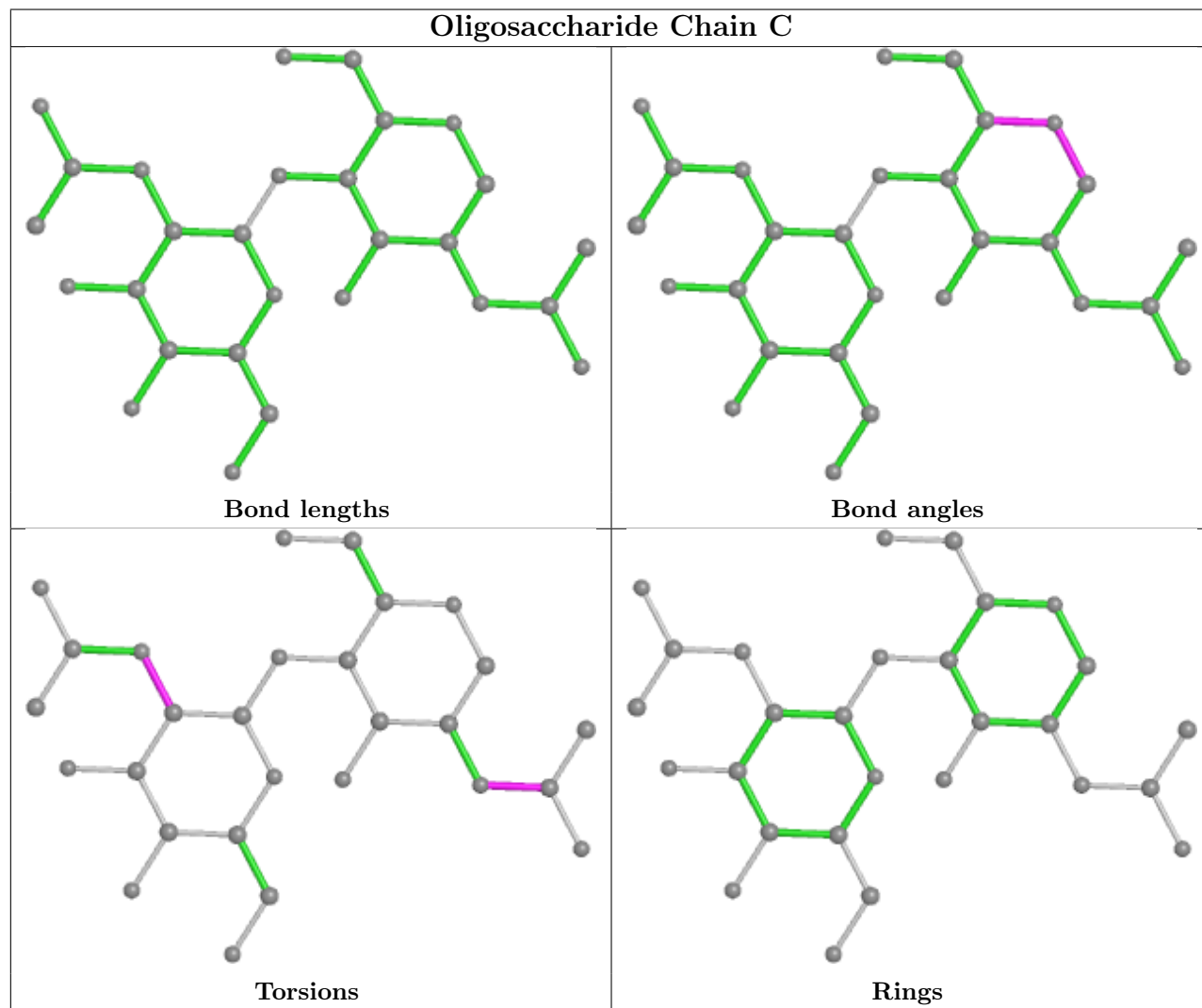
Continued from previous page...

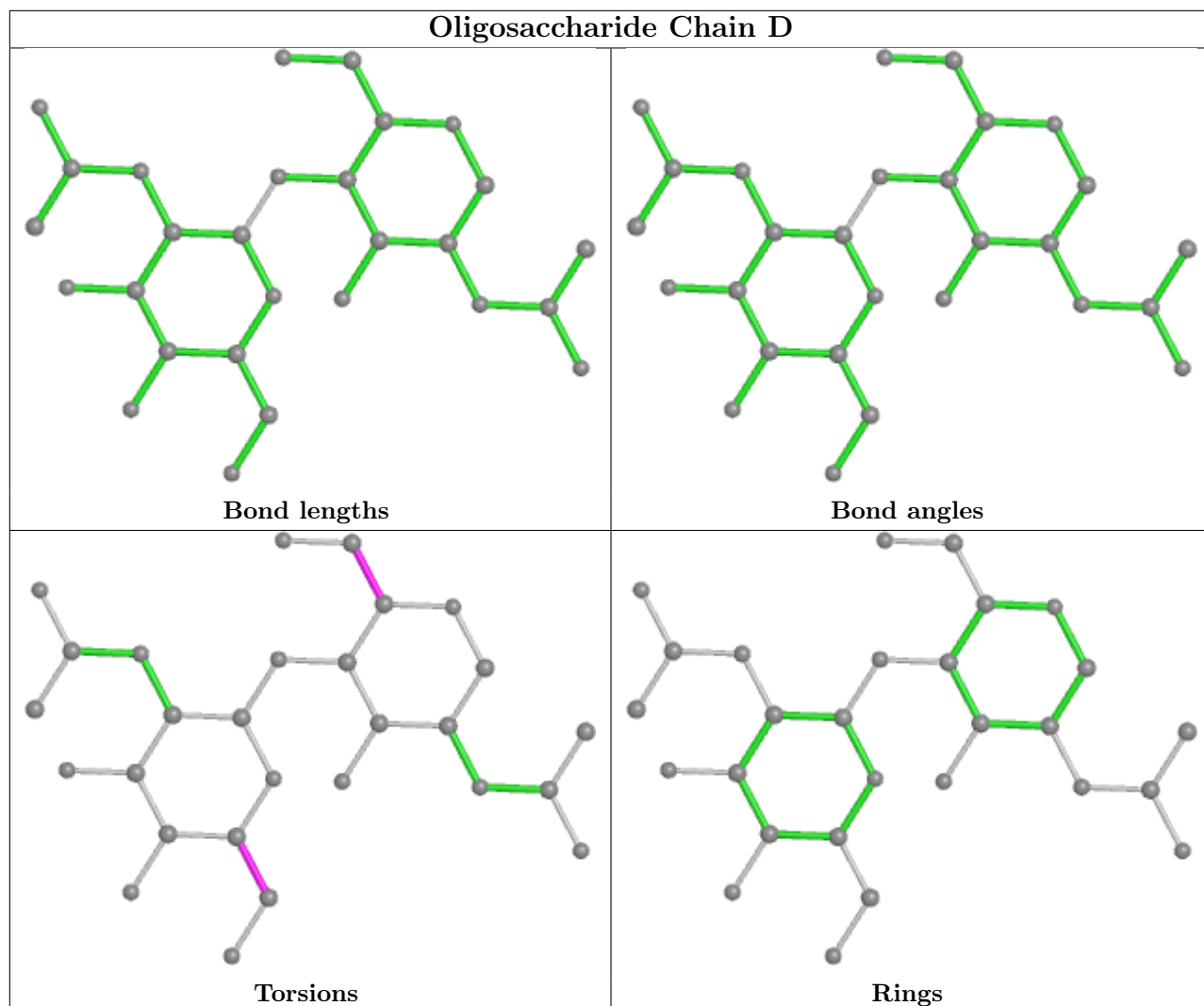
Mol	Chain	Res	Type	Atoms
3	C	2	NAG	C3-C2-N2-C7

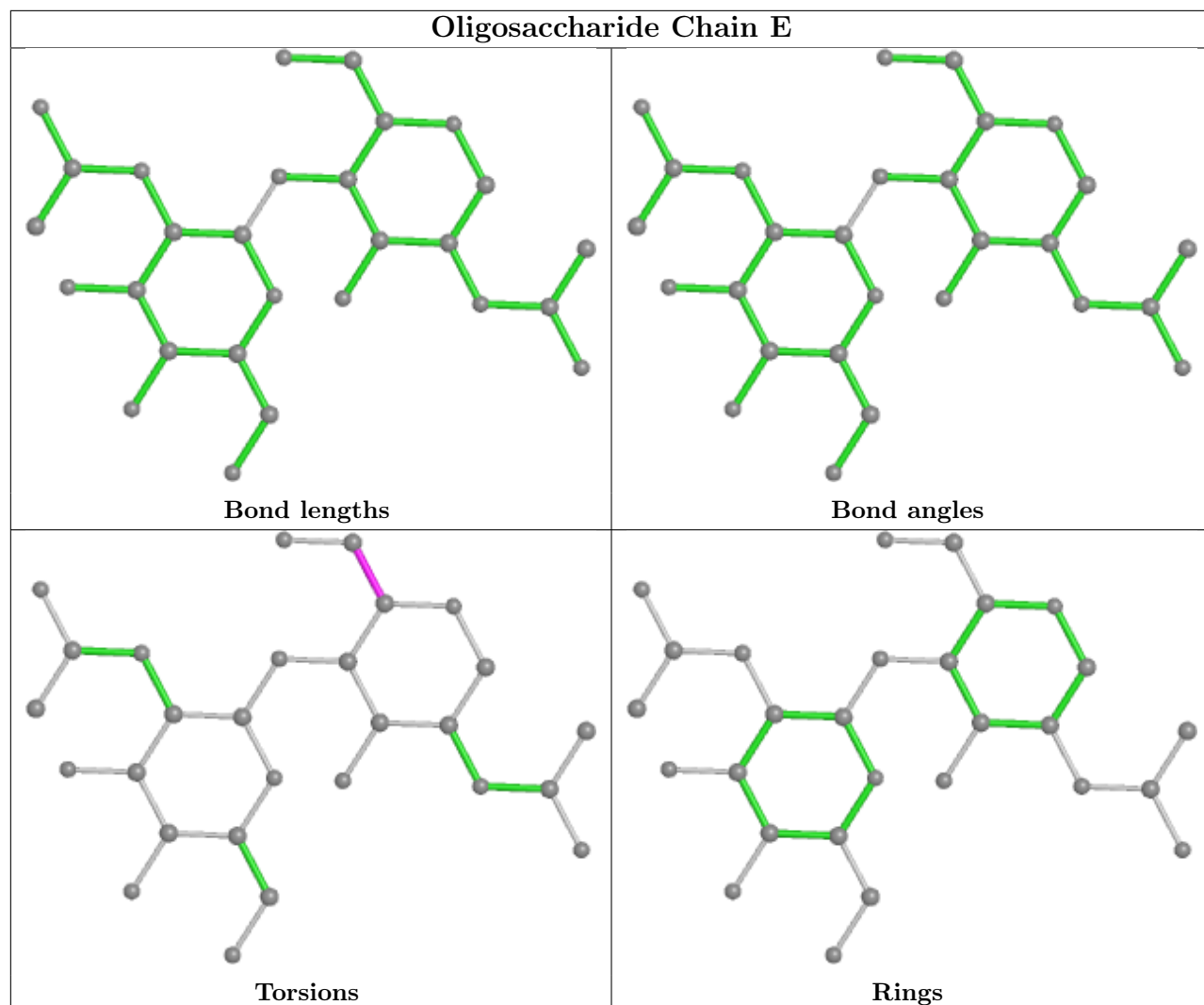
There are no ring outliers.

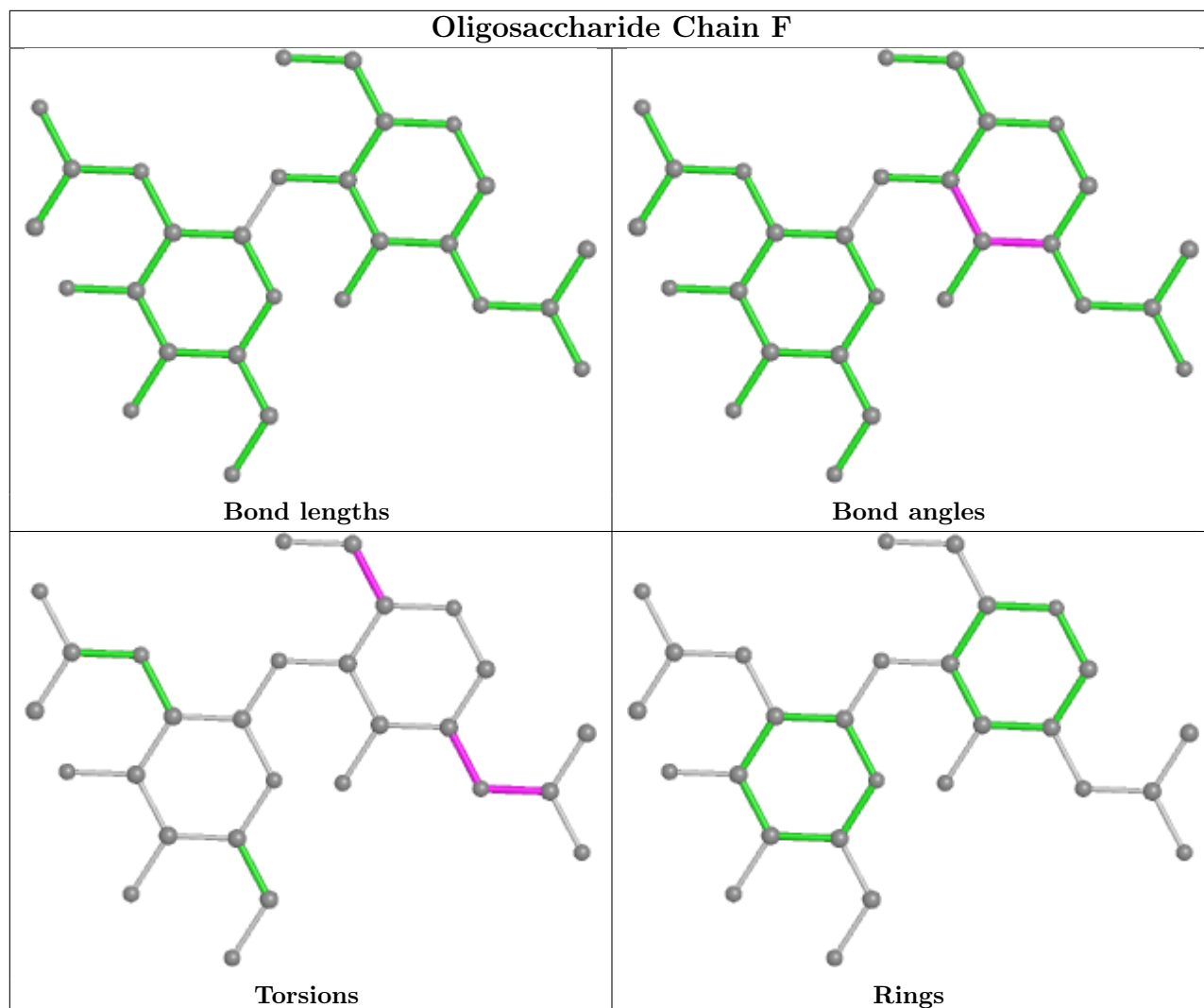
No monomer is involved in short contacts.

The following is a two-dimensional graphical depiction of Mogul quality analysis of bond lengths, bond angles, torsion angles, and ring geometry for oligosaccharide.









5.6 Ligand geometry [i](#)

Of 2 ligands modelled in this entry, 1 is monoatomic - leaving 1 for Mogul analysis.

In the following table, the Counts columns list the number of bonds (or angles) for which Mogul statistics could be retrieved, the number of bonds (or angles) that are observed in the model and the number of bonds (or angles) that are defined in the Chemical Component Dictionary. The Link column lists molecule types, if any, to which the group is linked. The Z score for a bond length (or angle) is the number of standard deviations the observed value is removed from the expected value. A bond length (or angle) with $|Z| > 2$ is considered an outlier worth inspection. RMSZ is the root-mean-square of all Z scores of the bond lengths (or angles).

Mol	Type	Chain	Res	Link	Bond lengths			Bond angles		
					Counts	RMSZ	$\# Z > 2$	Counts	RMSZ	$\# Z > 2$
5	NAG	A	702	2	14,14,15	0.29	0	17,19,21	0.44	0

In the following table, the Chirals column lists the number of chiral outliers, the number of chiral

centers analysed, the number of these observed in the model and the number defined in the Chemical Component Dictionary. Similar counts are reported in the Torsion and Rings columns. '-' means no outliers of that kind were identified.

Mol	Type	Chain	Res	Link	Chirals	Torsions	Rings
5	NAG	A	702	2	-	2/6/23/26	0/1/1/1

There are no bond length outliers.

There are no bond angle outliers.

There are no chirality outliers.

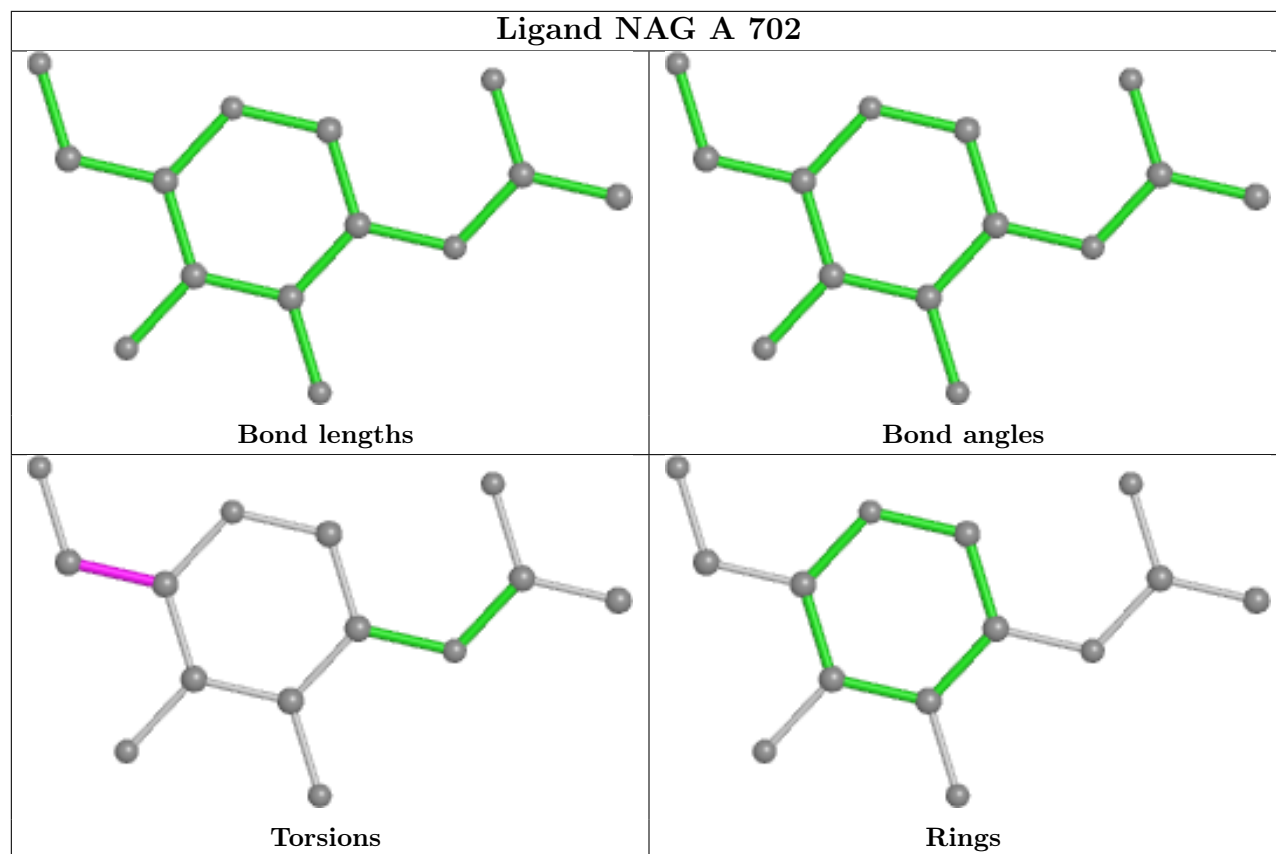
All (2) torsion outliers are listed below:

Mol	Chain	Res	Type	Atoms
5	A	702	NAG	O5-C5-C6-O6
5	A	702	NAG	C4-C5-C6-O6

There are no ring outliers.

No monomer is involved in short contacts.

The following is a two-dimensional graphical depiction of Mogul quality analysis of bond lengths, bond angles, torsion angles, and ring geometry for all instances of the Ligand of Interest. In addition, ligands with molecular weight > 250 and outliers as shown on the validation Tables will also be included. For torsion angles, if less than 5% of the Mogul distribution of torsion angles is within 10 degrees of the torsion angle in question, then that torsion angle is considered an outlier. Any bond that is central to one or more torsion angles identified as an outlier by Mogul will be highlighted in the graph. For rings, the root-mean-square deviation (RMSD) between the ring in question and similar rings identified by Mogul is calculated over all ring torsion angles. If the average RMSD is greater than 60 degrees and the minimal RMSD between the ring in question and any Mogul-identified rings is also greater than 60 degrees, then that ring is considered an outlier. The outliers are highlighted in purple. The color gray indicates Mogul did not find sufficient equivalents in the CSD to analyse the geometry.



5.7 Other polymers [i](#)

There are no such residues in this entry.

5.8 Polymer linkage issues [i](#)

There are no chain breaks in this entry.