



Full wwPDB X-ray Structure Validation Report ⓘ

Mar 8, 2018 – 08:10 pm GMT

PDB ID : 1YHS
Title : Crystal structure of Pim-1 bound to staurosporine
Authors : Jacobs, M.D.; Black, J.; Futer, O.; Swenson, L.; Hare, B.; Fleming, M.; Saxena, K.
Deposited on : 2005-01-10
Resolution : 2.15 Å(reported)

This is a Full wwPDB X-ray Structure Validation Report for a publicly released PDB entry.

We welcome your comments at validation@mail.wwpdb.org

A user guide is available at

<https://www.wwpdb.org/validation/2017/XrayValidationReportHelp>

with specific help available everywhere you see the ⓘ symbol.

The following versions of software and data (see [references ⓘ](#)) were used in the production of this report:

MolProbity : 4.02b-467
Mogul : 1.7.3 (157068), CSD as539be (2018)
Xtriage (Phenix) : 1.13
EDS : trunk30967
Percentile statistics : 20171227.v01 (using entries in the PDB archive December 27th 2017)
Refmac : 5.8.0158
CCP4 : 7.0 (Gargrove)
Ideal geometry (proteins) : Engh & Huber (2001)
Ideal geometry (DNA, RNA) : Parkinson et al. (1996)
Validation Pipeline (wwPDB-VP) : trunk30967

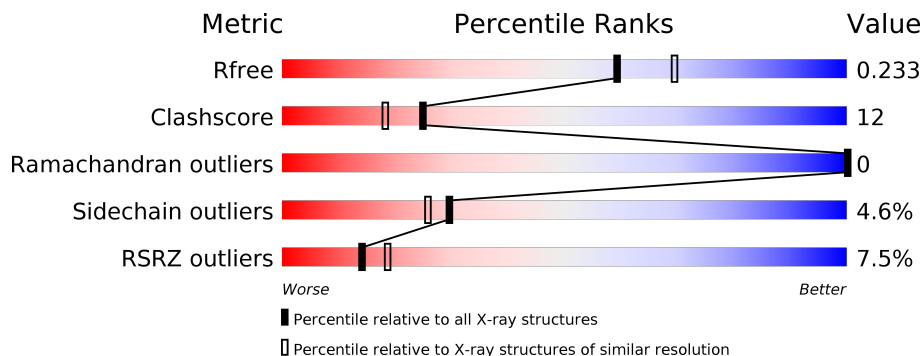
1 Overall quality at a glance

The following experimental techniques were used to determine the structure:

X-RAY DIFFRACTION

The reported resolution of this entry is 2.15 Å.

Percentile scores (ranging between 0-100) for global validation metrics of the entry are shown in the following graphic. The table shows the number of entries on which the scores are based.



Metric	Whole archive (#Entries)	Similar resolution (#Entries, resolution range(Å))
R_{free}	111664	1287 (2.16-2.16)
Clashscore	122126	1390 (2.16-2.16)
Ramachandran outliers	120053	1368 (2.16-2.16)
Sidechain outliers	120020	1367 (2.16-2.16)
RSRZ outliers	108989	1262 (2.16-2.16)

The table below summarises the geometric issues observed across the polymeric chains and their fit to the electron density. The red, orange, yellow and green segments on the lower bar indicate the fraction of residues that contain outliers for ≥ 3 , 2, 1 and 0 types of geometric quality criteria. A grey segment represents the fraction of residues that are not modelled. The numeric value for each fraction is indicated below the corresponding segment, with a dot representing fractions $\leq 5\%$. The upper red bar (where present) indicates the fraction of residues that have poor fit to the electron density. The numeric value is given above the bar.

Mol	Chain	Length	Quality of chain
1	A	273	

2 Entry composition [i](#)

There are 3 unique types of molecules in this entry. The entry contains 2388 atoms, of which 0 are hydrogens and 0 are deuteriums.

In the tables below, the ZeroOcc column contains the number of atoms modelled with zero occupancy, the AltConf column contains the number of residues with at least one atom in alternate conformation and the Trace column contains the number of residues modelled with at most 2 atoms.

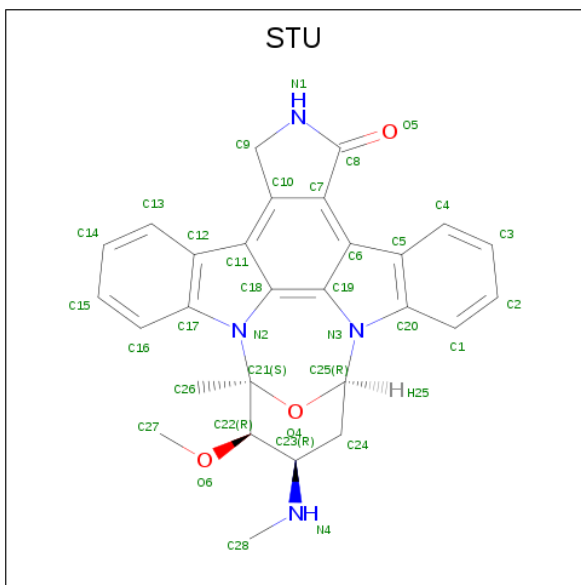
- Molecule 1 is a protein called Proto-oncogene serine/threonine-protein kinase Pim-1.

Mol	Chain	Residues	Atoms						ZeroOcc	AltConf	Trace
			Total	C	N	O	P	S			
1	A	269	2202	1406	384	402	1	9	0	0	0

There are 2 discrepancies between the modelled and reference sequences:

Chain	Residue	Modelled	Actual	Comment	Reference
A	161	CME	CYS	MODIFIED RESIDUE	UNP P11309
A	261	SEP	SER	MODIFIED RESIDUE	UNP P11309

- Molecule 2 is STAUROSPORINE (three-letter code: STU) (formula: $C_{28}H_{26}N_4O_3$).



Mol	Chain	Residues	Atoms				ZeroOcc	AltConf
			Total	C	N	O		
2	A	1	35	28	4	3	0	0

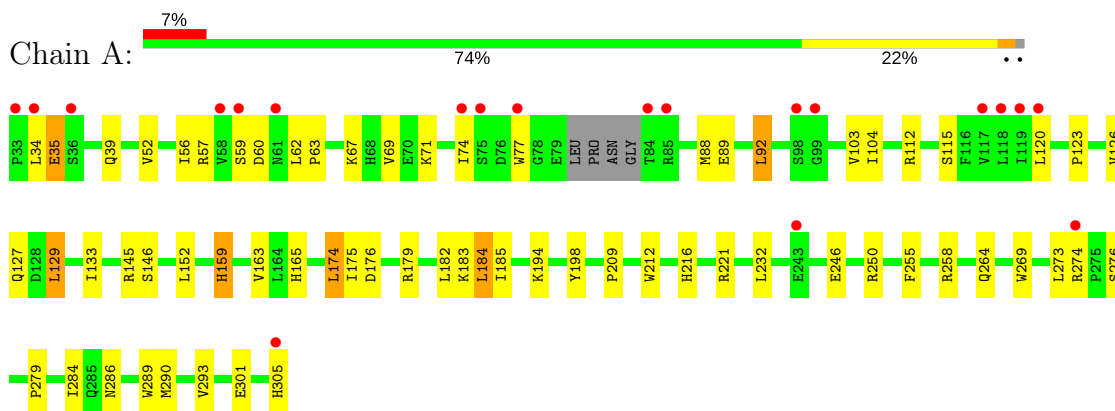
- Molecule 3 is water.

Mol	Chain	Residues	Atoms		ZeroOcc	AltConf
3	A	151	Total 151	O 151	0	0

3 Residue-property plots [i](#)

These plots are drawn for all protein, RNA and DNA chains in the entry. The first graphic for a chain summarises the proportions of the various outlier classes displayed in the second graphic. The second graphic shows the sequence view annotated by issues in geometry and electron density. Residues are color-coded according to the number of geometric quality criteria for which they contain at least one outlier: green = 0, yellow = 1, orange = 2 and red = 3 or more. A red dot above a residue indicates a poor fit to the electron density ($RSRZ > 2$). Stretches of 2 or more consecutive residues without any outlier are shown as a green connector. Residues present in the sample, but not in the model, are shown in grey.

- Molecule 1: Proto-oncogene serine/threonine-protein kinase Pim-1



4 Data and refinement statistics

Property	Value	Source
Space group	P 65	Depositor
Cell constants a, b, c, α , β , γ	97.73Å 97.73Å 80.51Å 90.00° 90.00° 120.00°	Depositor
Resolution (Å)	19.44 – 2.15 19.44 – 2.15	Depositor EDS
% Data completeness (in resolution range)	94.4 (19.44-2.15) 94.6 (19.44-2.15)	Depositor EDS
R_{merge}	(Not available)	Depositor
R_{sym}	(Not available)	Depositor
$\langle I/\sigma(I) \rangle$ ¹	2.31 (at 2.15Å)	Xtrriage
Refinement program	CNS	Depositor
R, R_{free}	0.205 , 0.233 0.205 , 0.233	Depositor DCC
R_{free} test set	1745 reflections (7.61%)	wwPDB-VP
Wilson B-factor (Å ²)	30.9	Xtrriage
Anisotropy	0.132	Xtrriage
Bulk solvent k_{sol} (e/Å ³), B_{sol} (Å ²)	0.38 , 44.1	EDS
L-test for twinning ²	$\langle L \rangle = 0.50$, $\langle L^2 \rangle = 0.33$	Xtrriage
Estimated twinning fraction	0.041 for h,-h-k,-l	Xtrriage
F_o, F_c correlation	0.94	EDS
Total number of atoms	2388	wwPDB-VP
Average B, all atoms (Å ²)	33.0	wwPDB-VP

Xtrriage's analysis on translational NCS is as follows: *The largest off-origin peak in the Patterson function is 3.65% of the height of the origin peak. No significant pseudotranslation is detected.*

¹Intensities estimated from amplitudes.

²Theoretical values of $\langle |L| \rangle$, $\langle L^2 \rangle$ for acentric reflections are 0.5, 0.333 respectively for untwinned datasets, and 0.375, 0.2 for perfectly twinned datasets.

5 Model quality [i](#)

5.1 Standard geometry [i](#)

Bond lengths and bond angles in the following residue types are not validated in this section: STU, CME, SEP

The Z score for a bond length (or angle) is the number of standard deviations the observed value is removed from the expected value. A bond length (or angle) with $|Z| > 5$ is considered an outlier worth inspection. RMSZ is the root-mean-square of all Z scores of the bond lengths (or angles).

Mol	Chain	Bond lengths		Bond angles	
		RMSZ	# Z >5	RMSZ	# Z >5
1	A	0.43	0/2238	0.67	2/3031 (0.1%)

There are no bond length outliers.

All (2) bond angle outliers are listed below:

Mol	Chain	Res	Type	Atoms	Z	Observed($^{\circ}$)	Ideal($^{\circ}$)
1	A	250	ARG	NE-CZ-NH1	6.45	123.52	120.30
1	A	250	ARG	NE-CZ-NH2	-5.61	117.50	120.30

There are no chirality outliers.

There are no planarity outliers.

5.2 Too-close contacts [i](#)

In the following table, the Non-H and H(model) columns list the number of non-hydrogen atoms and hydrogen atoms in the chain respectively. The H(added) column lists the number of hydrogen atoms added and optimized by MolProbity. The Clashes column lists the number of clashes within the asymmetric unit, whereas Symm-Clashes lists symmetry related clashes.

Mol	Chain	Non-H	H(model)	H(added)	Clashes	Symm-Clashes
1	A	2202	0	2140	51	0
2	A	35	0	26	0	0
3	A	151	0	0	4	0
All	All	2388	0	2166	51	0

The all-atom clashscore is defined as the number of clashes found per 1000 atoms (including hydrogen atoms). The all-atom clashscore for this structure is 12.

All (51) close contacts within the same asymmetric unit are listed below, sorted by their clash

magnitude.

Atom-1	Atom-2	Interatomic distance (Å)	Clash overlap (Å)
1:A:67:LYS:HE2	1:A:89:GLU:OE1	1.76	0.85
1:A:152:LEU:CD1	1:A:290:MET:CE	2.61	0.79
1:A:152:LEU:HD12	1:A:290:MET:HE1	1.65	0.77
1:A:123:PRO:HG2	1:A:126:VAL:HG21	1.67	0.74
1:A:57:ARG:HD2	1:A:60:ASP:OD1	1.93	0.69
1:A:221:ARG:HG3	3:A:319:HOH:O	1.94	0.67
1:A:152:LEU:HD12	1:A:290:MET:CE	2.25	0.65
1:A:246:GLU:CD	1:A:246:GLU:H	1.99	0.64
1:A:152:LEU:CD1	1:A:290:MET:HE2	2.31	0.59
1:A:152:LEU:HD11	1:A:290:MET:HE2	1.85	0.59
1:A:39:GLN:HB3	1:A:56:ILE:HG13	1.84	0.59
1:A:274:ARG:HH11	1:A:274:ARG:CB	2.16	0.59
1:A:176:ASP:OD1	1:A:179:ARG:HG3	2.04	0.57
1:A:39:GLN:OE1	1:A:56:ILE:HD11	2.05	0.56
1:A:57:ARG:HD3	1:A:59:SER:HB3	1.89	0.54
1:A:126:VAL:HG11	1:A:174:LEU:HG	1.89	0.54
1:A:92:LEU:HG	1:A:163:VAL:HG13	1.92	0.52
1:A:175:ILE:HG12	1:A:182:LEU:HD22	1.90	0.52
1:A:183:LYS:NZ	3:A:421:HOH:O	2.42	0.52
1:A:88:MET:HG3	1:A:92:LEU:HD22	1.90	0.52
1:A:274:ARG:NH1	1:A:274:ARG:HB2	2.24	0.52
1:A:145:ARG:HD3	1:A:289:TRP:O	2.12	0.50
1:A:129:LEU:HD22	1:A:133:ILE:CD1	2.43	0.49
1:A:39:GLN:HB3	1:A:56:ILE:CG1	2.43	0.48
1:A:152:LEU:CD1	1:A:290:MET:HE1	2.32	0.48
1:A:69:VAL:O	1:A:115:SER:HB2	2.13	0.48
1:A:258:ARG:HD3	1:A:258:ARG:C	2.34	0.46
1:A:52:VAL:HG22	1:A:67:LYS:HG3	1.98	0.46
1:A:159:HIS:HE1	3:A:310:HOH:O	1.97	0.46
1:A:255:PHE:CZ	1:A:264:GLN:HG2	2.50	0.46
1:A:62:LEU:HD12	1:A:63:PRO:HD2	1.99	0.45
1:A:123:PRO:HG2	1:A:126:VAL:CG2	2.45	0.44
1:A:274:ARG:HD3	1:A:276:SER:OG	2.17	0.44
1:A:165:HIS:CD2	1:A:184:LEU:HD12	2.54	0.43
1:A:194:LYS:HE2	1:A:198:TYR:CE1	2.53	0.43
1:A:104:ILE:HA	1:A:104:ILE:HD13	1.87	0.43
1:A:274:ARG:NH1	1:A:274:ARG:CB	2.81	0.43
1:A:274:ARG:HH11	1:A:274:ARG:HB2	1.82	0.43
1:A:209:PRO:HD3	3:A:366:HOH:O	2.18	0.43
1:A:301:GLU:HA	1:A:305:HIS:CD2	2.54	0.42
1:A:286:ASN:HD22	1:A:286:ASN:HA	1.70	0.42

Continued on next page...

Continued from previous page...

Atom-1	Atom-2	Interatomic distance (Å)	Clash overlap (Å)
1:A:284:ILE:O	1:A:290:MET:HG3	2.20	0.42
1:A:126:VAL:CG1	1:A:127:GLN:N	2.82	0.42
1:A:269:TRP:CD1	1:A:279:PRO:HD3	2.55	0.42
1:A:35:GLU:HG2	1:A:35:GLU:H	1.40	0.42
1:A:126:VAL:HG12	1:A:127:GLN:N	2.33	0.41
1:A:71:LYS:HE3	1:A:112:ARG:O	2.21	0.41
1:A:212:TRP:CE3	1:A:216:HIS:HA	2.56	0.41
1:A:146:SER:HA	1:A:293:VAL:CG2	2.50	0.41
1:A:74:ILE:HG13	1:A:77:TRP:CZ2	2.56	0.41
1:A:174:LEU:HD22	1:A:185:ILE:HG21	2.02	0.41

There are no symmetry-related clashes.

5.3 Torsion angles [i](#)

5.3.1 Protein backbone [i](#)

In the following table, the Percentiles column shows the percent Ramachandran outliers of the chain as a percentile score with respect to all X-ray entries followed by that with respect to entries of similar resolution.

The Analysed column shows the number of residues for which the backbone conformation was analysed, and the total number of residues.

Mol	Chain	Analysed	Favoured	Allowed	Outliers	Percentiles
1	A	263/273 (96%)	258 (98%)	5 (2%)	0	100 100

There are no Ramachandran outliers to report.

5.3.2 Protein sidechains [i](#)

In the following table, the Percentiles column shows the percent sidechain outliers of the chain as a percentile score with respect to all X-ray entries followed by that with respect to entries of similar resolution.

The Analysed column shows the number of residues for which the sidechain conformation was analysed, and the total number of residues.

Mol	Chain	Analysed	Rotameric	Outliers	Percentiles
1	A	238/242 (98%)	227 (95%)	11 (5%)	29 26

All (11) residues with a non-rotameric sidechain are listed below:

Mol	Chain	Res	Type
1	A	34	LEU
1	A	35	GLU
1	A	92	LEU
1	A	103	VAL
1	A	120	LEU
1	A	129	LEU
1	A	159	HIS
1	A	174	LEU
1	A	184	LEU
1	A	232	LEU
1	A	273	LEU

Some sidechains can be flipped to improve hydrogen bonding and reduce clashes. All (8) such sidechains are listed below:

Mol	Chain	Res	Type
1	A	127	GLN
1	A	140	GLN
1	A	159	HIS
1	A	160	ASN
1	A	178	ASN
1	A	286	ASN
1	A	297	GLN
1	A	305	HIS

5.3.3 RNA [i](#)

There are no RNA molecules in this entry.

5.4 Non-standard residues in protein, DNA, RNA chains [i](#)

2 non-standard protein/DNA/RNA residues are modelled in this entry.

In the following table, the Counts columns list the number of bonds (or angles) for which Mogul statistics could be retrieved, the number of bonds (or angles) that are observed in the model and the number of bonds (or angles) that are defined in the Chemical Component Dictionary. The Link column lists molecule types, if any, to which the group is linked. The Z score for a bond length (or angle) is the number of standard deviations the observed value is removed from the expected value. A bond length (or angle) with $|Z| > 2$ is considered an outlier worth inspection. RMSZ is the root-mean-square of all Z scores of the bond lengths (or angles).

Mol	Type	Chain	Res	Link	Bond lengths			Bond angles		
					Counts	RMSZ	# Z > 2	Counts	RMSZ	# Z > 2
1	CME	A	161	1	9,9,10	0.97	0	6,9,11	0.99	0
1	SEP	A	261	1	9,9,10	2.68	3 (33%)	9,12,14	1.86	4 (44%)

In the following table, the Chirals column lists the number of chiral outliers, the number of chiral centers analysed, the number of these observed in the model and the number defined in the Chemical Component Dictionary. Similar counts are reported in the Torsion and Rings columns. '-' means no outliers of that kind were identified.

Mol	Type	Chain	Res	Link	Chirals	Torsions	Rings
1	CME	A	161	1	-	0/5/8/10	0/0/0/0
1	SEP	A	261	1	-	0/5/8/10	0/0/0/0

All (3) bond length outliers are listed below:

Mol	Chain	Res	Type	Atoms	Z	Observed(Å)	Ideal(Å)
1	A	261	SEP	P-O2P	2.47	1.64	1.54
1	A	261	SEP	CA-C	2.85	1.54	1.50
1	A	261	SEP	P-OG	6.62	1.81	1.60

All (4) bond angle outliers are listed below:

Mol	Chain	Res	Type	Atoms	Z	Observed(°)	Ideal(°)
1	A	261	SEP	O2P-P-OG	-2.22	100.81	106.73
1	A	261	SEP	OG-CB-CA	2.06	110.20	108.17
1	A	261	SEP	P-OG-CB	2.81	126.03	118.30
1	A	261	SEP	OG-P-O1P	2.89	114.58	106.47

There are no chirality outliers.

There are no torsion outliers.

There are no ring outliers.

No monomer is involved in short contacts.

5.5 Carbohydrates [i](#)

There are no carbohydrates in this entry.

5.6 Ligand geometry [i](#)

1 ligand is modelled in this entry.

In the following table, the Counts columns list the number of bonds (or angles) for which Mogul statistics could be retrieved, the number of bonds (or angles) that are observed in the model and the number of bonds (or angles) that are defined in the Chemical Component Dictionary. The Link column lists molecule types, if any, to which the group is linked. The Z score for a bond length (or angle) is the number of standard deviations the observed value is removed from the expected value. A bond length (or angle) with $|Z| > 2$ is considered an outlier worth inspection. RMSZ is the root-mean-square of all Z scores of the bond lengths (or angles).

Mol	Type	Chain	Res	Link	Bond lengths			Bond angles		
					Counts	RMSZ	$\# Z > 2$	Counts	RMSZ	$\# Z > 2$
2	STU	A	306	-	30,42,42	3.13	23 (76%)	30,68,68	1.28	2 (6%)

In the following table, the Chirals column lists the number of chiral outliers, the number of chiral centers analysed, the number of these observed in the model and the number defined in the Chemical Component Dictionary. Similar counts are reported in the Torsion and Rings columns. '-' means no outliers of that kind were identified.

Mol	Type	Chain	Res	Link	Chirals	Torsions	Rings
2	STU	A	306	-	-	0/4/42/42	0/0/8/8

All (23) bond length outliers are listed below:

Mol	Chain	Res	Type	Atoms	Z	Observed(Å)	Ideal(Å)
2	A	306	STU	C7-C8	-2.67	1.44	1.49
2	A	306	STU	C7-C10	2.14	1.43	1.39
2	A	306	STU	C19-C18	2.33	1.47	1.42
2	A	306	STU	C11-C18	2.37	1.45	1.42
2	A	306	STU	C6-C19	2.39	1.45	1.42
2	A	306	STU	C13-C12	2.49	1.46	1.41
2	A	306	STU	C9-N1	2.53	1.48	1.45
2	A	306	STU	C22-C23	2.93	1.55	1.52
2	A	306	STU	C24-C25	2.97	1.56	1.51
2	A	306	STU	C7-C6	3.00	1.48	1.42
2	A	306	STU	C26-C21	3.14	1.55	1.51
2	A	306	STU	C4-C5	3.38	1.48	1.41
2	A	306	STU	C16-C17	3.53	1.48	1.41
2	A	306	STU	C5-C20	3.72	1.47	1.41
2	A	306	STU	C14-C15	3.73	1.47	1.38
2	A	306	STU	C10-C11	3.78	1.49	1.42
2	A	306	STU	C12-C17	3.99	1.47	1.41
2	A	306	STU	C1-C20	4.06	1.49	1.41
2	A	306	STU	C3-C2	4.37	1.48	1.38
2	A	306	STU	C14-C13	4.43	1.46	1.36
2	A	306	STU	C15-C16	4.47	1.47	1.36

Continued on next page...

Continued from previous page...

Mol	Chain	Res	Type	Atoms	Z	Observed(Å)	Ideal(Å)
2	A	306	STU	C2-C1	5.10	1.48	1.36
2	A	306	STU	C3-C4	5.55	1.49	1.36

All (2) bond angle outliers are listed below:

Mol	Chain	Res	Type	Atoms	Z	Observed(°)	Ideal(°)
2	A	306	STU	O5-C8-C7	-4.25	124.27	129.32
2	A	306	STU	C26-C21-C22	-2.66	107.39	112.66

There are no chirality outliers.

There are no torsion outliers.

There are no ring outliers.

No monomer is involved in short contacts.

5.7 Other polymers [i](#)

There are no such residues in this entry.

5.8 Polymer linkage issues [i](#)

There are no chain breaks in this entry.

6 Fit of model and data [i](#)

6.1 Protein, DNA and RNA chains [i](#)

In the following table, the column labelled ‘#RSRZ> 2’ contains the number (and percentage) of RSRZ outliers, followed by percent RSRZ outliers for the chain as percentile scores relative to all X-ray entries and entries of similar resolution. The OWAB column contains the minimum, median, 95th percentile and maximum values of the occupancy-weighted average B-factor per residue. The column labelled ‘Q< 0.9’ lists the number of (and percentage) of residues with an average occupancy less than 0.9.

Mol	Chain	Analysed	<RSRZ>	#RSRZ>2	OWAB(Å ²)	Q<0.9
1	A	267/273 (97%)	0.29	20 (7%) 14 19	20, 31, 53, 69	0

All (20) RSRZ outliers are listed below:

Mol	Chain	Res	Type	RSRZ
1	A	84	THR	4.1
1	A	75	SER	3.8
1	A	58	VAL	3.6
1	A	33	PRO	3.4
1	A	118	LEU	3.4
1	A	85	ARG	3.3
1	A	59	SER	3.2
1	A	98	SER	3.1
1	A	99	GLY	2.9
1	A	74	ILE	2.8
1	A	34	LEU	2.8
1	A	120	LEU	2.8
1	A	77	TRP	2.6
1	A	119	ILE	2.6
1	A	305	HIS	2.5
1	A	36	SER	2.3
1	A	274	ARG	2.3
1	A	243	GLU	2.3
1	A	117	VAL	2.1
1	A	61	ASN	2.0

6.2 Non-standard residues in protein, DNA, RNA chains [i](#)

In the following table, the Atoms column lists the number of modelled atoms in the group and the number defined in the chemical component dictionary. The B-factors column lists the minimum, median, 95th percentile and maximum values of B factors of atoms in the group. The column

labelled 'Q< 0.9' lists the number of atoms with occupancy less than 0.9.

Mol	Type	Chain	Res	Atoms	RSCC	RSR	B-factors(\AA^2)	Q<0.9
1	SEP	A	261	10/11	0.79	0.18	28,31,36,37	0
1	CME	A	161	10/11	0.92	0.14	27,31,39,40	0

6.3 Carbohydrates [i](#)

There are no carbohydrates in this entry.

6.4 Ligands [i](#)

In the following table, the Atoms column lists the number of modelled atoms in the group and the number defined in the chemical component dictionary. The B-factors column lists the minimum, median, 95th percentile and maximum values of B factors of atoms in the group. The column labelled 'Q< 0.9' lists the number of atoms with occupancy less than 0.9.

Mol	Type	Chain	Res	Atoms	RSCC	RSR	B-factors(\AA^2)	Q<0.9
2	STU	A	306	35/35	0.95	0.10	23,24,25,26	0

6.5 Other polymers [i](#)

There are no such residues in this entry.