



# Full wwPDB X-ray Structure Validation Report ⓘ

Aug 20, 2020 – 03:56 PM BST

PDB ID : 5YID  
Title : Crystal Structure of KNI-10395 bound Plasmepsin II (PMII) from Plasmodium falciparum  
Authors : Mishra, V.; Rathore, I.; Bhaumik, P.  
Deposited on : 2017-10-04  
Resolution : 2.10 Å(reported)

This is a Full wwPDB X-ray Structure Validation Report for a publicly released PDB entry.

We welcome your comments at [validation@mail.wwpdb.org](mailto:validation@mail.wwpdb.org)

A user guide is available at

<https://www.wwpdb.org/validation/2017/XrayValidationReportHelp>

with specific help available everywhere you see the ⓘ symbol.

---

The following versions of software and data (see [references ⓘ](#)) were used in the production of this report:

MolProbity : 4.02b-467  
Mogul : 1.8.5 (274361), CSD as541be (2020)  
Xtriage (Phenix) : 1.13  
EDS : 2.13.1  
buster-report : 1.1.7 (2018)  
Percentile statistics : 20191225.v01 (using entries in the PDB archive December 25th 2019)  
Refmac : 5.8.0158  
CCP4 : 7.0.044 (Gargrove)  
Ideal geometry (proteins) : Engh & Huber (2001)  
Ideal geometry (DNA, RNA) : Parkinson et al. (1996)  
Validation Pipeline (wwPDB-VP) : 2.13.1

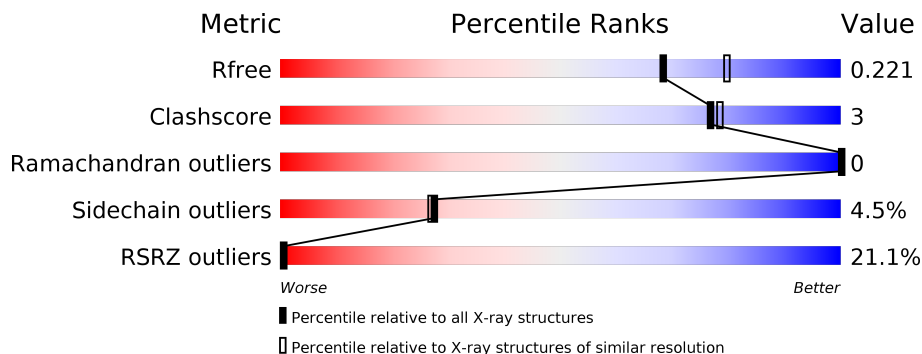
# 1 Overall quality at a glance

The following experimental techniques were used to determine the structure:

*X-RAY DIFFRACTION*

The reported resolution of this entry is 2.10 Å.

Percentile scores (ranging between 0-100) for global validation metrics of the entry are shown in the following graphic. The table shows the number of entries on which the scores are based.



Metric	Whole archive (#Entries)	Similar resolution (#Entries, resolution range(Å))
$R_{free}$	130704	5197 (2.10-2.10)
Clashscore	141614	5710 (2.10-2.10)
Ramachandran outliers	138981	5647 (2.10-2.10)
Sidechain outliers	138945	5648 (2.10-2.10)
RSRZ outliers	127900	5083 (2.10-2.10)

The table below summarises the geometric issues observed across the polymeric chains and their fit to the electron density. The red, orange, yellow and green segments on the lower bar indicate the fraction of residues that contain outliers for  $\geq 3$ , 2, 1 and 0 types of geometric quality criteria respectively. A grey segment represents the fraction of residues that are not modelled. The numeric value for each fraction is indicated below the corresponding segment, with a dot representing fractions  $\leq 5\%$ . The upper red bar (where present) indicates the fraction of residues that have poor fit to the electron density. The numeric value is given above the bar.

Mol	Chain	Length	Quality of chain
1	A	327	

## 2 Entry composition [i](#)

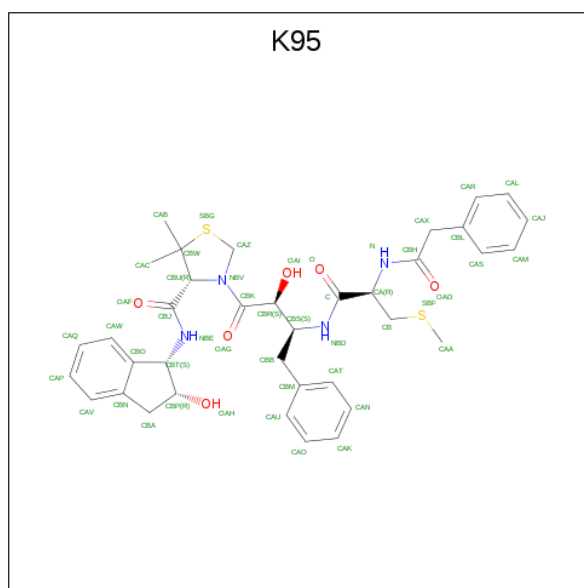
There are 5 unique types of molecules in this entry. The entry contains 2848 atoms, of which 0 are hydrogens and 0 are deuteriums.

In the tables below, the ZeroOcc column contains the number of atoms modelled with zero occupancy, the AltConf column contains the number of residues with at least one atom in alternate conformation and the Trace column contains the number of residues modelled with at most 2 atoms.

- Molecule 1 is a protein called Plasmepsin II.

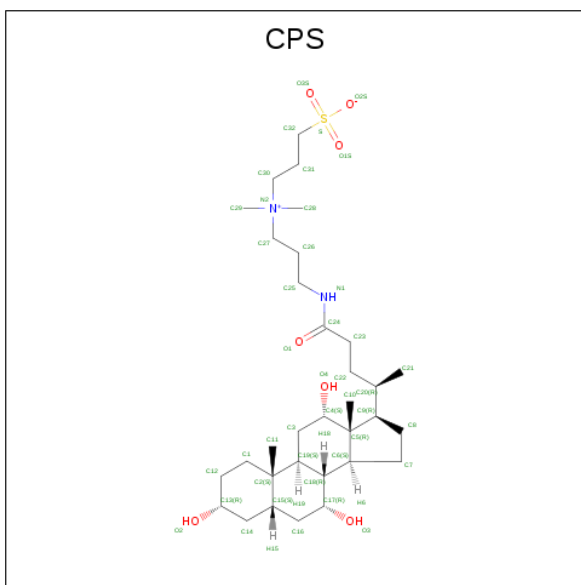
Mol	Chain	Residues	Atoms					ZeroOcc	AltConf	Trace
			Total	C	N	O	S			
1	A	327	2643	1714	406	511	12	0	11	0

- Molecule 2 is (4R)-N-[(1S,2R)-2-hydroxy-2,3-dihydro-1H-inden-1-yl]-3-[(2S,3S)-2-hydroxy-3-[[S-methyl-N-(phenylacetyl)-L-cysteinyl]amino]-4-phenylbutanoyl]-5,5-dimethyl-1,3-thiazolidine-4-carboxamide (three-letter code: K95) (formula: C<sub>37</sub>H<sub>44</sub>N<sub>4</sub>O<sub>6</sub>S<sub>2</sub>) (labeled as "Ligand of Interest" by author).



Mol	Chain	Residues	Atoms					ZeroOcc	AltConf
			Total	C	N	O	S		
2	A	1	49	37	4	6	2	0	0

- Molecule 3 is 3-[(3-CHOLAMIDOPROPYL)DIMETHYLAMMONIO]-1-PROPANESULFONATE (three-letter code: CPS) (formula: C<sub>32</sub>H<sub>58</sub>N<sub>2</sub>O<sub>7</sub>S).



Mol	Chain	Residues	Atoms					ZeroOcc	AltConf
			Total	C	N	O	S		
3	A	1	42	32	2	7	1	0	0

- Molecule 4 is SODIUM ION (three-letter code: NA) (formula: Na).

Mol	Chain	Residues	Atoms		ZeroOcc	AltConf
			Total	Na		
4	A	1	1	1	0	0

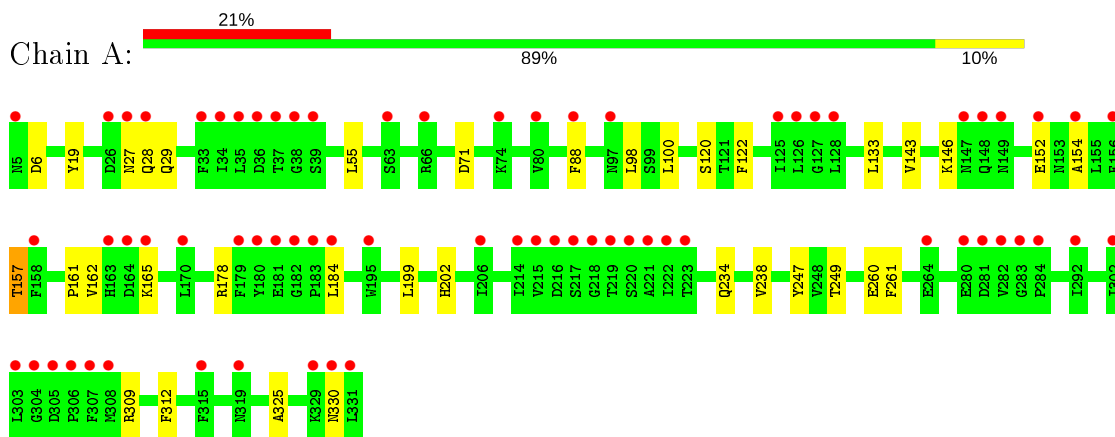
- Molecule 5 is water.

Mol	Chain	Residues	Atoms		ZeroOcc	AltConf
			Total	O		
5	A	113	113	113	0	0

### 3 Residue-property plots [i](#)

These plots are drawn for all protein, RNA, DNA and oligosaccharide chains in the entry. The first graphic for a chain summarises the proportions of the various outlier classes displayed in the second graphic. The second graphic shows the sequence view annotated by issues in geometry and electron density. Residues are color-coded according to the number of geometric quality criteria for which they contain at least one outlier: green = 0, yellow = 1, orange = 2 and red = 3 or more. A red dot above a residue indicates a poor fit to the electron density ( $RSRZ > 2$ ). Stretches of 2 or more consecutive residues without any outlier are shown as a green connector. Residues present in the sample, but not in the model, are shown in grey.

- Molecule 1: Plasmepsin II



## 4 Data and refinement statistics

Property	Value	Source
Space group	I 4	Depositor
Cell constants a, b, c, $\alpha$ , $\beta$ , $\gamma$	107.60Å 107.60Å 72.56Å 90.00° 90.00° 90.00°	Depositor
Resolution (Å)	38.00 – 2.10 34.03 – 2.10	Depositor EDS
% Data completeness (in resolution range)	99.8 (38.00-2.10) 99.8 (34.03-2.10)	Depositor EDS
$R_{merge}$	0.06	Depositor
$R_{sym}$	(Not available)	Depositor
$\langle I/\sigma(I) \rangle$ <sup>1</sup>	1.37 (at 2.10Å)	Xtrriage
Refinement program	REFMAC 5.8.0103	Depositor
R, $R_{free}$	0.188 , 0.225 0.196 , 0.221	Depositor DCC
$R_{free}$ test set	1212 reflections (5.00%)	wwPDB-VP
Wilson B-factor (Å <sup>2</sup> )	49.1	Xtrriage
Anisotropy	0.303	Xtrriage
Bulk solvent $k_{sol}$ (e/Å <sup>3</sup> ), $B_{sol}$ (Å <sup>2</sup> )	0.37 , 61.9	EDS
L-test for twinning <sup>2</sup>	$\langle  L  \rangle = 0.48$ , $\langle L^2 \rangle = 0.31$	Xtrriage
Estimated twinning fraction	0.043 for -k,-h,-l	Xtrriage
$F_o, F_c$ correlation	0.96	EDS
Total number of atoms	2848	wwPDB-VP
Average B, all atoms (Å <sup>2</sup> )	65.0	wwPDB-VP

Xtrriage's analysis on translational NCS is as follows: *The largest off-origin peak in the Patterson function is 5.08% of the height of the origin peak. No significant pseudotranslation is detected.*

<sup>1</sup>Intensities estimated from amplitudes.

<sup>2</sup>Theoretical values of  $\langle |L| \rangle$ ,  $\langle L^2 \rangle$  for acentric reflections are 0.5, 0.333 respectively for untwinned datasets, and 0.375, 0.2 for perfectly twinned datasets.

## 5 Model quality [i](#)

### 5.1 Standard geometry [i](#)

Bond lengths and bond angles in the following residue types are not validated in this section: NA, CPS, K95

The Z score for a bond length (or angle) is the number of standard deviations the observed value is removed from the expected value. A bond length (or angle) with  $|Z| > 5$  is considered an outlier worth inspection. RMSZ is the root-mean-square of all Z scores of the bond lengths (or angles).

Mol	Chain	Bond lengths		Bond angles	
		RMSZ	# Z  >5	RMSZ	# Z  >5
1	A	0.53	0/2742	0.74	0/3729

There are no bond length outliers.

There are no bond angle outliers.

There are no chirality outliers.

There are no planarity outliers.

### 5.2 Too-close contacts [i](#)

In the following table, the Non-H and H(model) columns list the number of non-hydrogen atoms and hydrogen atoms in the chain respectively. The H(added) column lists the number of hydrogen atoms added and optimized by MolProbity. The Clashes column lists the number of clashes within the asymmetric unit, whereas Symm-Clashes lists symmetry related clashes.

Mol	Chain	Non-H	H(model)	H(added)	Clashes	Symm-Clashes
1	A	2643	0	2593	13	0
2	A	49	0	43	3	0
3	A	42	0	58	0	0
4	A	1	0	0	0	0
5	A	113	0	0	0	0
All	All	2848	0	2694	16	0

The all-atom clashscore is defined as the number of clashes found per 1000 atoms (including hydrogen atoms). The all-atom clashscore for this structure is 3.

All (16) close contacts within the same asymmetric unit are listed below, sorted by their clash magnitude.

Atom-1	Atom-2	Interatomic distance (Å)	Clash overlap (Å)
2:A:401:K95:CBU	2:A:401:K95:NBV	1.69	1.28
2:A:401:K95:CBK	2:A:401:K95:CBU	2.73	0.66
2:A:401:K95:CBJ	2:A:401:K95:NBV	2.60	0.58
1:A:71:ASP:O	1:A:88:PHE:O	2.23	0.57
1:A:157:THR:HG23	1:A:312:PHE:CE1	2.39	0.56
1:A:162:VAL:HG23	1:A:165:LYS:HB2	1.89	0.54
1:A:162:VAL:CG2	1:A:165:LYS:HB2	2.39	0.52
1:A:202:HIS:HB2	1:A:260:GLU:HB2	1.92	0.51
1:A:238:VAL:HG22	1:A:249:THR:HB	1.93	0.49
1:A:161:PRO:O	1:A:309[A]:ARG:NH1	2.49	0.46
1:A:184:LEU:HA	1:A:325:ALA:HB2	2.01	0.42
1:A:146:LYS:HG2	1:A:154:ALA:HB2	2.02	0.41
1:A:27:ASN:HB3	1:A:29:GLN:HG3	2.02	0.41
1:A:19:TYR:CE1	1:A:122:PHE:HB3	2.56	0.41
1:A:238:VAL:HG13	1:A:247:TYR:HB3	2.02	0.40
1:A:199:LEU:HD13	1:A:261:PHE:HB3	2.04	0.40

There are no symmetry-related clashes.

## 5.3 Torsion angles [i](#)

### 5.3.1 Protein backbone [i](#)

In the following table, the Percentiles column shows the percent Ramachandran outliers of the chain as a percentile score with respect to all X-ray entries followed by that with respect to entries of similar resolution.

The Analysed column shows the number of residues for which the backbone conformation was analysed, and the total number of residues.

Mol	Chain	Analysed	Favoured	Allowed	Outliers	Percentiles
1	A	336/327 (103%)	324 (96%)	12 (4%)	0	<b>100</b> <b>100</b>

There are no Ramachandran outliers to report.

### 5.3.2 Protein sidechains [i](#)

In the following table, the Percentiles column shows the percent sidechain outliers of the chain as a percentile score with respect to all X-ray entries followed by that with respect to entries of similar resolution.

The Analysed column shows the number of residues for which the sidechain conformation was



analysed, and the total number of residues.

Mol	Chain	Analysed	Rotameric	Outliers	Percentiles
1	A	303/292 (104%)	289 (95%)	14 (5%)	27 26

All (14) residues with a non-rotameric sidechain are listed below:

Mol	Chain	Res	Type
1	A	6	ASP
1	A	28	GLN
1	A	55	LEU
1	A	98	LEU
1	A	100	LEU
1	A	120[A]	SER
1	A	120[B]	SER
1	A	133	LEU
1	A	143	VAL
1	A	152	GLU
1	A	157	THR
1	A	178	ARG
1	A	234	GLN
1	A	330	ASN

Some sidechains can be flipped to improve hydrogen bonding and reduce clashes. There are no such sidechains identified.

### 5.3.3 RNA [i](#)

There are no RNA molecules in this entry.

## 5.4 Non-standard residues in protein, DNA, RNA chains [i](#)

There are no non-standard protein/DNA/RNA residues in this entry.

## 5.5 Carbohydrates [i](#)

There are no monosaccharides in this entry.

## 5.6 Ligand geometry [i](#)

Of 3 ligands modelled in this entry, 1 is monoatomic - leaving 2 for Mogul analysis.

In the following table, the Counts columns list the number of bonds (or angles) for which Mogul statistics could be retrieved, the number of bonds (or angles) that are observed in the model and the number of bonds (or angles) that are defined in the Chemical Component Dictionary. The Link column lists molecule types, if any, to which the group is linked. The Z score for a bond length (or angle) is the number of standard deviations the observed value is removed from the expected value. A bond length (or angle) with  $|Z| > 2$  is considered an outlier worth inspection. RMSZ is the root-mean-square of all Z scores of the bond lengths (or angles).

Mol	Type	Chain	Res	Link	Bond lengths			Bond angles		
					Counts	RMSZ	# Z  > 2	Counts	RMSZ	# Z  > 2
2	K95	A	401	4	53,53,53	4.88	18 (33%)	68,75,75	1.57	12 (17%)
3	CPS	A	402	-	45,45,45	1.29	1 (2%)	69,70,70	0.95	1 (1%)

In the following table, the Chirals column lists the number of chiral outliers, the number of chiral centers analysed, the number of these observed in the model and the number defined in the Chemical Component Dictionary. Similar counts are reported in the Torsion and Rings columns. '-' means no outliers of that kind were identified.

Mol	Type	Chain	Res	Link	Chirals	Torsions	Rings
2	K95	A	401	4	-	0/43/71/71	0/5/5/5
3	CPS	A	402	-	-	6/25/90/90	0/4/4/4

All (19) bond length outliers are listed below:

Mol	Chain	Res	Type	Atoms	Z	Observed(Å)	Ideal(Å)
2	A	401	K95	CBU-NBV	26.42	1.69	1.46
2	A	401	K95	CAZ-SBG	-14.57	1.48	1.83
2	A	401	K95	CBW-CBU	-9.07	1.37	1.56
3	A	402	CPS	C32-S	-7.65	1.66	1.77
2	A	401	K95	CBH-N	6.24	1.47	1.34
2	A	401	K95	CAZ-NBV	5.35	1.55	1.46
2	A	401	K95	C-NBD	5.30	1.45	1.34
2	A	401	K95	CBJ-NBE	5.22	1.45	1.34
2	A	401	K95	CBP-CBT	-4.95	1.50	1.55
2	A	401	K95	CBW-SBG	-4.79	1.75	1.85
2	A	401	K95	CBK-NBV	4.18	1.44	1.34
2	A	401	K95	CBO-CBT	3.88	1.55	1.51
2	A	401	K95	CBN-CBO	2.59	1.44	1.39
2	A	401	K95	OAF-CBJ	-2.49	1.18	1.23
2	A	401	K95	O-C	-2.49	1.18	1.23
2	A	401	K95	CBA-CBN	2.47	1.55	1.50
2	A	401	K95	CAX-CBL	2.38	1.55	1.51
2	A	401	K95	OAD-CBH	-2.26	1.18	1.23
2	A	401	K95	CAP-CAQ	2.04	1.43	1.38

All (13) bond angle outliers are listed below:

Mol	Chain	Res	Type	Atoms	Z	Observed(°)	Ideal(°)
2	A	401	K95	CAZ-NBV-CBU	-4.41	104.64	114.95
2	A	401	K95	CBW-CBU-NBV	-4.36	99.94	106.48
2	A	401	K95	CA-CB-SBF	-4.03	107.52	114.04
2	A	401	K95	CAA-SBF-CB	3.25	107.28	101.30
2	A	401	K95	CBO-CBT-CBP	3.23	104.88	102.58
3	A	402	CPS	O3S-S-C32	2.77	110.25	106.92
2	A	401	K95	CBN-CBO-CBT	-2.64	108.02	110.22
2	A	401	K95	CAX-CBH-N	2.62	120.09	115.88
2	A	401	K95	OAG-CBK-NBV	-2.57	116.81	121.38
2	A	401	K95	CBA-CBP-CBT	2.50	105.91	103.78
2	A	401	K95	CBW-CBU-CBJ	2.49	118.41	113.28
2	A	401	K95	CBA-CBN-CBO	-2.23	108.22	110.99
2	A	401	K95	CAW-CBO-CBT	2.10	131.78	128.99

There are no chirality outliers.

All (6) torsion outliers are listed below:

Mol	Chain	Res	Type	Atoms
3	A	402	CPS	N2-C30-C31-C32
3	A	402	CPS	C31-C30-N2-C28
3	A	402	CPS	C31-C30-N2-C29
3	A	402	CPS	C31-C30-N2-C27
3	A	402	CPS	C31-C32-S-O1S
3	A	402	CPS	C31-C32-S-O2S

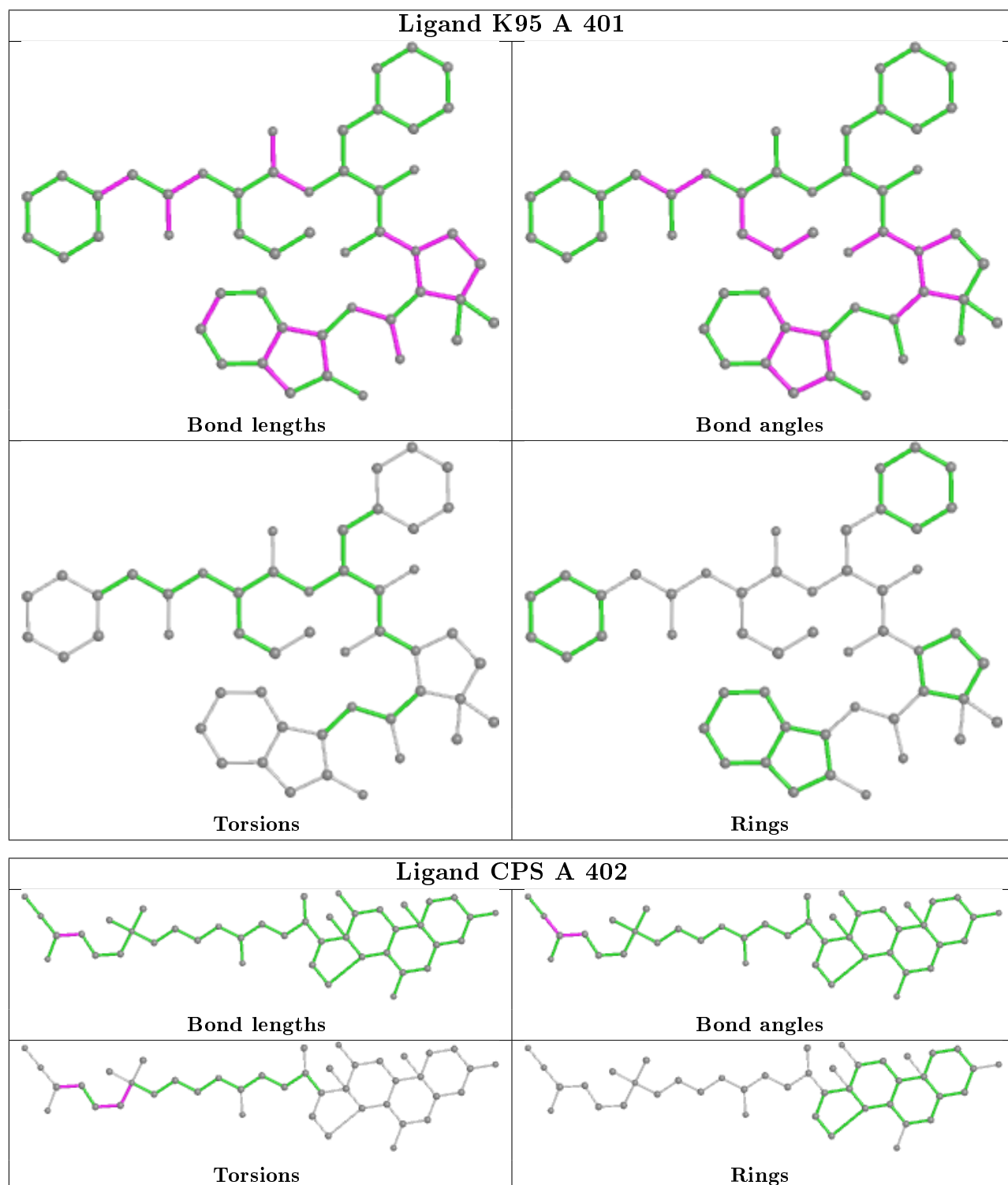
There are no ring outliers.

1 monomer is involved in 3 short contacts:

Mol	Chain	Res	Type	Clashes	Symm-Clashes
2	A	401	K95	3	0

The following is a two-dimensional graphical depiction of Mogul quality analysis of bond lengths, bond angles, torsion angles, and ring geometry for all instances of the Ligand of Interest. In addition, ligands with molecular weight > 250 and outliers as shown on the validation Tables will also be included. For torsion angles, if less than 5% of the Mogul distribution of torsion angles is within 10 degrees of the torsion angle in question, then that torsion angle is considered an outlier. Any bond that is central to one or more torsion angles identified as an outlier by Mogul will be highlighted in the graph. For rings, the root-mean-square deviation (RMSD) between the ring in question and similar rings identified by Mogul is calculated over all ring torsion angles. If the average RMSD is greater than 60 degrees and the minimal RMSD between the ring in question and any Mogul-identified rings is also greater than 60 degrees, then that ring is considered an outlier.

The outliers are highlighted in purple. The color gray indicates Mogul did not find sufficient equivalents in the CSD to analyse the geometry.



## 5.7 Other polymers [i](#)

There are no such residues in this entry.

## 5.8 Polymer linkage issues

There are no chain breaks in this entry.

## 6 Fit of model and data

### 6.1 Protein, DNA and RNA chains

In the following table, the column labelled ‘#RSRZ> 2’ contains the number (and percentage) of RSRZ outliers, followed by percent RSRZ outliers for the chain as percentile scores relative to all X-ray entries and entries of similar resolution. The OWAB column contains the minimum, median, 95<sup>th</sup> percentile and maximum values of the occupancy-weighted average B-factor per residue. The column labelled ‘Q< 0.9’ lists the number of (and percentage) of residues with an average occupancy less than 0.9.

Mol	Chain	Analysed	<RSRZ>	#RSRZ>2	OWAB(Å <sup>2</sup> )	Q<0.9
1	A	327/327 (100%)	1.06	69 (21%) <b>1</b> <b>0</b>	36, 63, 96, 117	0

All (69) RSRZ outliers are listed below:

Mol	Chain	Res	Type	RSRZ
1	A	282	VAL	8.0
1	A	217	SER	6.0
1	A	35	LEU	5.6
1	A	331	LEU	5.5
1	A	330	ASN	5.4
1	A	37	THR	5.3
1	A	218	GLY	5.1
1	A	126	LEU	5.1
1	A	303	LEU	4.9
1	A	164	ASP	4.6
1	A	219	THR	4.5
1	A	66	ARG	4.4
1	A	128	LEU	4.3
1	A	281	ASP	4.3
1	A	165	LYS	4.3
1	A	28	GLN	4.3
1	A	26	ASP	4.2
1	A	184	LEU	4.2
1	A	34	ILE	3.9
1	A	158	PHE	3.8
1	A	302	ILE	3.6
1	A	38	GLY	3.6
1	A	305[A]	ASP	3.6
1	A	181	GLU	3.5
1	A	183	PRO	3.5
1	A	36	ASP	3.4
1	A	163	HIS	3.2

*Continued on next page...*

*Continued from previous page...*

<b>Mol</b>	<b>Chain</b>	<b>Res</b>	<b>Type</b>	<b>RSRZ</b>
1	A	308	MET	3.2
1	A	216	ASP	3.2
1	A	127	GLY	3.2
1	A	80	VAL	3.1
1	A	304	GLY	3.1
1	A	214	ILE	3.1
1	A	195	TRP	3.1
1	A	63	SER	3.0
1	A	170	LEU	3.0
1	A	125	ILE	3.0
1	A	149	ASN	3.0
1	A	329	LYS	2.9
1	A	88	PHE	2.9
1	A	221	ALA	2.9
1	A	223	THR	2.9
1	A	156	PHE	2.9
1	A	283	GLY	2.8
1	A	39	SER	2.8
1	A	315	PHE	2.8
1	A	215	VAL	2.7
1	A	154	ALA	2.7
1	A	284	PRO	2.7
1	A	280	GLU	2.6
1	A	220[A]	SER	2.6
1	A	152	GLU	2.6
1	A	182	GLY	2.6
1	A	222	ILE	2.6
1	A	33	PHE	2.4
1	A	292	ILE	2.4
1	A	179	PHE	2.4
1	A	148	GLN	2.3
1	A	27	ASN	2.3
1	A	180	TYR	2.2
1	A	74	LYS	2.2
1	A	206	ILE	2.2
1	A	319	ASN	2.2
1	A	306	PRO	2.1
1	A	5	ASN	2.1
1	A	264	GLU	2.1
1	A	307	PHE	2.1
1	A	97	ASN	2.0
1	A	147	ASN	2.0

## 6.2 Non-standard residues in protein, DNA, RNA chains [i](#)

There are no non-standard protein/DNA/RNA residues in this entry.

## 6.3 Carbohydrates [i](#)

There are no monosaccharides in this entry.

## 6.4 Ligands [i](#)

In the following table, the Atoms column lists the number of modelled atoms in the group and the number defined in the chemical component dictionary. The B-factors column lists the minimum, median, 95<sup>th</sup> percentile and maximum values of B factors of atoms in the group. The column labelled 'Q< 0.9' lists the number of atoms with occupancy less than 0.9.

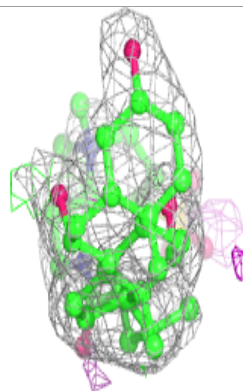
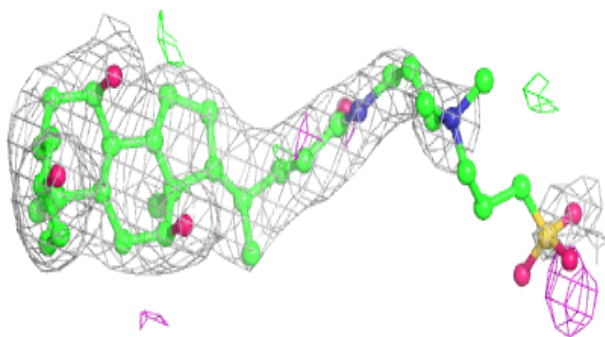
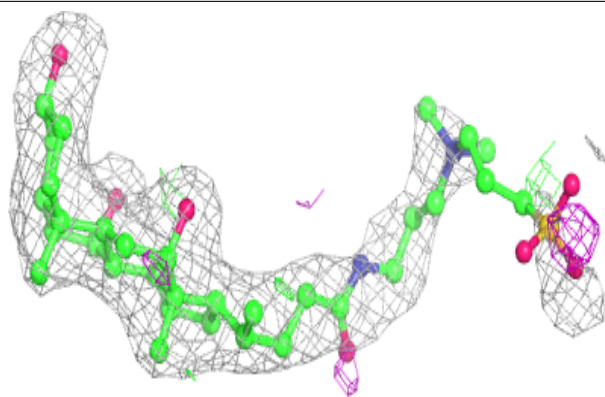
Mol	Type	Chain	Res	Atoms	RSCC	RSR	B-factors(Å <sup>2</sup> )	Q<0.9
3	CPS	A	402	42/42	0.85	0.25	45,55,163,167	0
2	K95	A	401	49/49	0.93	0.24	37,43,64,68	0
4	NA	A	403	1/1	0.97	0.50	42,42,42,42	1

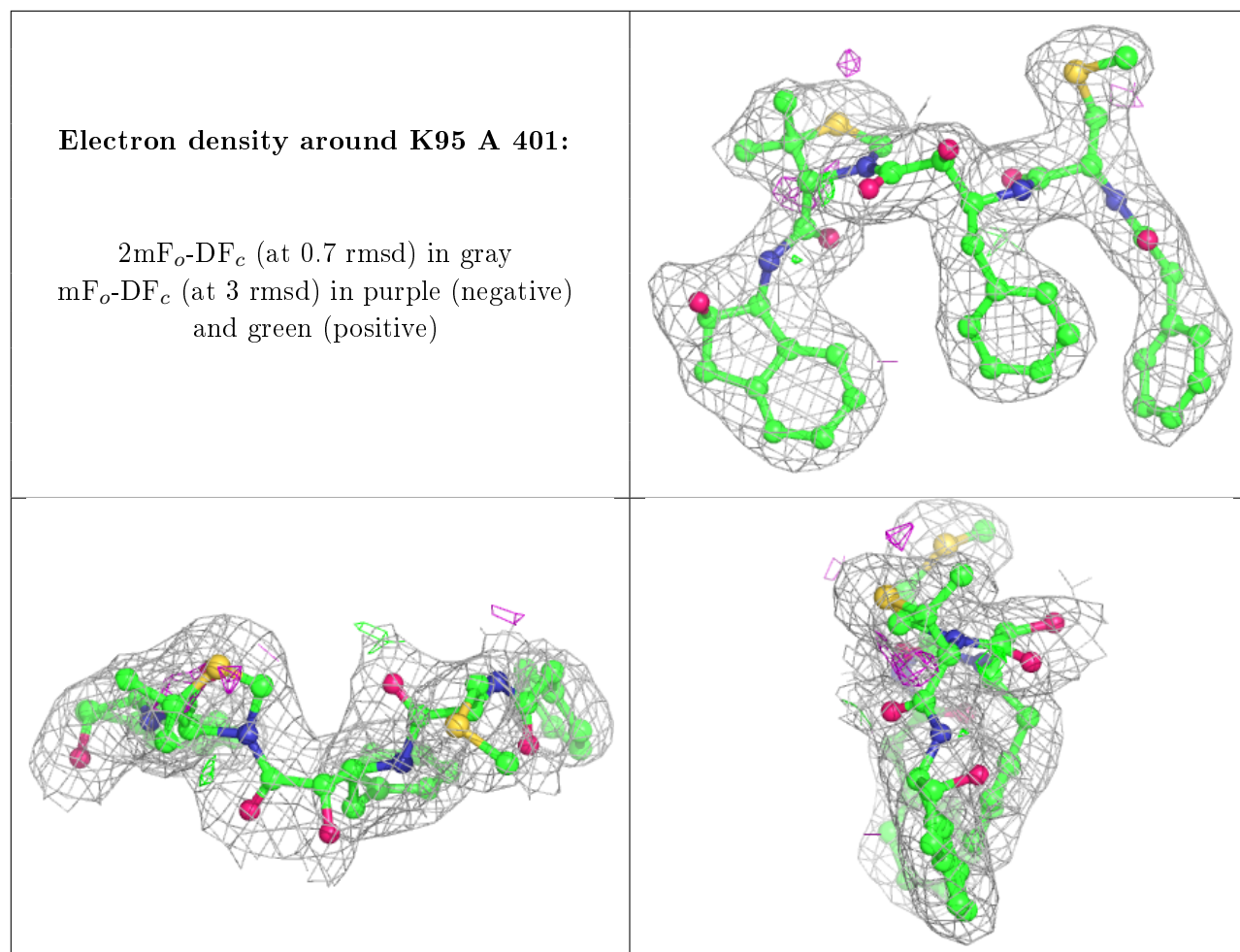
The following is a graphical depiction of the model fit to experimental electron density of all instances of the Ligand of Interest. In addition, ligands with molecular weight > 250 and outliers as shown on the geometry validation Tables will also be included. Each fit is shown from different orientation to approximate a three-dimensional view.



**Electron density around CPS A 402:**

$2mF_o-DF_c$  (at 0.7 rmsd) in gray  
 $mF_o-DF_c$  (at 3 rmsd) in purple (negative)  
and green (positive)





## 6.5 Other polymers [i](#)

There are no such residues in this entry.