



Full wwPDB X-ray Structure Validation Report ⓘ

Jun 25, 2024 – 02:09 AM EDT

PDB ID : 6YIK
Title : Crystal structure of the CREBBP bromodomain in complex with a tetrahydroquinoxaline ligand
Authors : Picaud, S.; Brand, M.; Tobias, K.; von Delft, F.; Arrowsmith, C.H.; Edwards, A.M.; Bountra, C.; Conway, S.; Filippakopoulos, P.
Deposited on : 2020-04-01
Resolution : 1.70 Å(reported)

This is a Full wwPDB X-ray Structure Validation Report for a publicly released PDB entry.

We welcome your comments at validation@mail.wwpdb.org

A user guide is available at

<https://www.wwpdb.org/validation/2017/XrayValidationReportHelp>

with specific help available everywhere you see the ⓘ symbol.

The types of validation reports are described at

<http://www.wwpdb.org/validation/2017/FAQs#types>.

The following versions of software and data (see [references ⓘ](#)) were used in the production of this report:

MolProbity : 4.02b-467
Mogul : 2022.3.0, CSD as543be (2022)
Xtriage (Phenix) : 1.20.1
EDS : 2.37.1
buster-report : 1.1.7 (2018)
Percentile statistics : 20191225.v01 (using entries in the PDB archive December 25th 2019)
Refmac : 5.8.0158
CCP4 : 7.0.044 (Gargrove)
Ideal geometry (proteins) : Engh & Huber (2001)
Ideal geometry (DNA, RNA) : Parkinson et al. (1996)
Validation Pipeline (wwPDB-VP) : 2.37.1

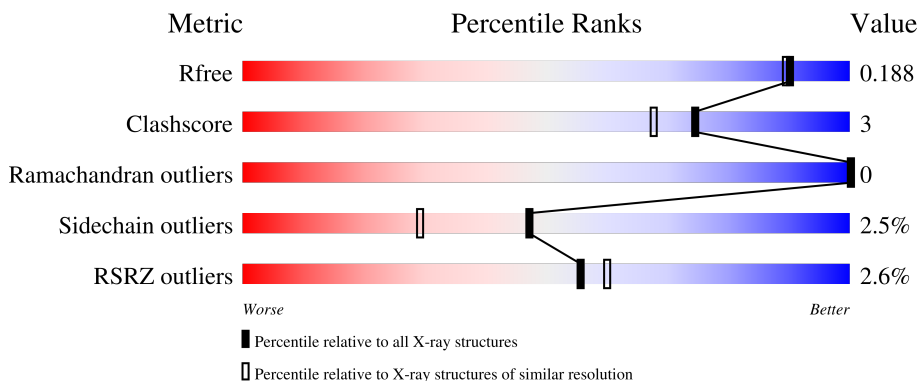
1 Overall quality at a glance

The following experimental techniques were used to determine the structure:

X-RAY DIFFRACTION

The reported resolution of this entry is 1.70 Å.

Percentile scores (ranging between 0-100) for global validation metrics of the entry are shown in the following graphic. The table shows the number of entries on which the scores are based.



Metric	Whole archive (#Entries)	Similar resolution (#Entries, resolution range(Å))
R_{free}	130704	4298 (1.70-1.70)
Clashscore	141614	4695 (1.70-1.70)
Ramachandran outliers	138981	4610 (1.70-1.70)
Sidechain outliers	138945	4610 (1.70-1.70)
RSRZ outliers	127900	4222 (1.70-1.70)

The table below summarises the geometric issues observed across the polymeric chains and their fit to the electron density. The red, orange, yellow and green segments of the lower bar indicate the fraction of residues that contain outliers for ≥ 3 , 2, 1 and 0 types of geometric quality criteria respectively. A grey segment represents the fraction of residues that are not modelled. The numeric value for each fraction is indicated below the corresponding segment, with a dot representing fractions $\leq 5\%$. The upper red bar (where present) indicates the fraction of residues that have poor fit to the electron density. The numeric value is given above the bar.

Mol	Chain	Length	Quality of chain
1	A	119	 82% 13% . .
1	B	119	 85% 9% . .
1	C	119	 87% 8% 5%

2 Entry composition

There are 3 unique types of molecules in this entry. The entry contains 3453 atoms, of which 0 are hydrogens and 0 are deuteriums.

In the tables below, the ZeroOcc column contains the number of atoms modelled with zero occupancy, the AltConf column contains the number of residues with at least one atom in alternate conformation and the Trace column contains the number of residues modelled with at most 2 atoms.

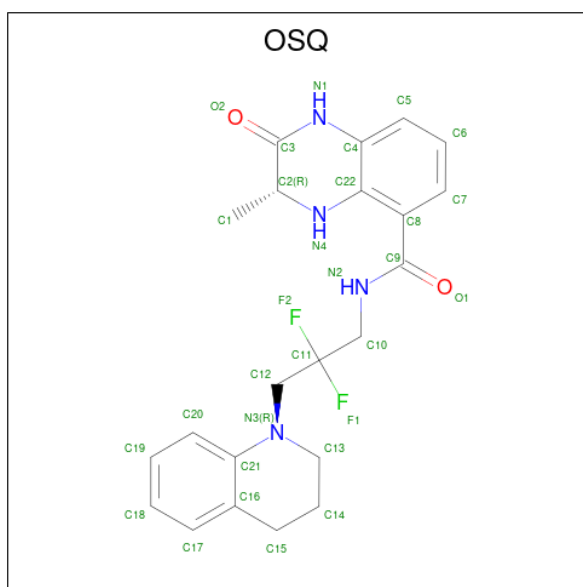
- Molecule 1 is a protein called CREBBP.

Mol	Chain	Residues	Atoms					ZeroOcc	AltConf	Trace
			Total	C	N	O	S			
1	A	114	986	645	158	178	5	0	3	0
1	B	114	962	625	158	174	5	0	1	0
1	C	113	940	612	152	171	5	0	1	0

There are 6 discrepancies between the modelled and reference sequences:

Chain	Residue	Modelled	Actual	Comment	Reference
A	1079	SER	-	expression tag	UNP Q92793
A	1080	MET	-	expression tag	UNP Q92793
B	1079	SER	-	expression tag	UNP Q92793
B	1080	MET	-	expression tag	UNP Q92793
C	1079	SER	-	expression tag	UNP Q92793
C	1080	MET	-	expression tag	UNP Q92793

- Molecule 2 is (3 {R})- {N}-[3-(3,4-dihydro-2 {H}-quinolin-1-yl)-2,2-bis(fluoranyl)propyl]-3-methyl-2-oxidanylidene-3,4-dihydro-1 {H}-quinoxaline-5-carboxamide (three-letter code: OSQ) (formula: C₂₂H₂₄F₂N₄O₂) (labeled as "Ligand of Interest" by depositor).



Mol	Chain	Residues	Atoms					ZeroOcc	AltConf
			Total	C	F	N	O		
2	A	1	Total	C	F	N	O	0	0
			30	22	2	4	2		
2	A	1	Total	C	F	N	O	0	1
			60	44	4	8	4		
2	B	1	Total	C	F	N	O	0	0
			30	22	2	4	2		
2	C	1	Total	C	F	N	O	0	0
			30	22	2	4	2		
2	C	1	Total	C	F	N	O	0	0
			30	22	2	4	2		


- Molecule 3 is water.

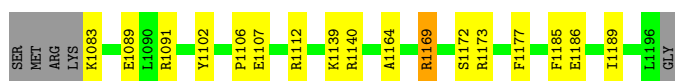
Mol	Chain	Residues	Atoms		ZeroOcc	AltConf
3	A	150	Total	O	0	0
			150	150		
3	B	143	Total	O	0	0
			143	143		
3	C	92	Total	O	0	0
			92	92		

3 Residue-property plots [i](#)


These plots are drawn for all protein, RNA, DNA and oligosaccharide chains in the entry. The first graphic for a chain summarises the proportions of the various outlier classes displayed in the second graphic. The second graphic shows the sequence view annotated by issues in geometry and electron density. Residues are color-coded according to the number of geometric quality criteria for which they contain at least one outlier: green = 0, yellow = 1, orange = 2 and red = 3 or more. A red dot above a residue indicates a poor fit to the electron density ($RSRZ > 2$). Stretches of 2 or more consecutive residues without any outlier are shown as a green connector. Residues present in the sample, but not in the model, are shown in grey.

- Molecule 1: CREBBP

Chain A: 




- Molecule 1: CREBBP

Chain B: 



- Molecule 1: CREBBP

Chain C: 



4 Data and refinement statistics

Property	Value	Source
Space group	P 1 21 1	Depositor
Cell constants a, b, c, α , β , γ	80.23Å 43.91Å 88.27Å 90.00° 110.06° 90.00°	Depositor
Resolution (Å)	48.15 – 1.70 48.15 – 1.70	Depositor EDS
% Data completeness (in resolution range)	99.3 (48.15-1.70) 98.9 (48.15-1.70)	Depositor EDS
R_{merge}	(Not available)	Depositor
R_{sym}	0.05	Depositor
$\langle I/\sigma(I) \rangle$ ¹	2.12 (at 1.70Å)	Xtrriage
Refinement program	REFMAC 5.8.0258	Depositor
R, R_{free}	0.156 , 0.184 0.169 , 0.188	Depositor DCC
R_{free} test set	1958 reflections (3.07%)	wwPDB-VP
Wilson B-factor (Å ²)	26.3	Xtrriage
Anisotropy	0.235	Xtrriage
Bulk solvent k_{sol} (e/Å ³), B_{sol} (Å ²)	0.34 , 47.7	EDS
L-test for twinning ²	$\langle L \rangle = 0.49$, $\langle L^2 \rangle = 0.32$	Xtrriage
Estimated twinning fraction	No twinning to report.	Xtrriage
F_o, F_c correlation	0.97	EDS
Total number of atoms	3453	wwPDB-VP
Average B, all atoms (Å ²)	35.0	wwPDB-VP

Xtrriage's analysis on translational NCS is as follows: *The largest off-origin peak in the Patterson function is 5.47% of the height of the origin peak. No significant pseudotranslation is detected.*

¹Intensities estimated from amplitudes.

²Theoretical values of $\langle |L| \rangle$, $\langle L^2 \rangle$ for acentric reflections are 0.5, 0.333 respectively for untwinned datasets, and 0.375, 0.2 for perfectly twinned datasets.

5 Model quality i

5.1 Standard geometry i

Bond lengths and bond angles in the following residue types are not validated in this section: OSQ

The Z score for a bond length (or angle) is the number of standard deviations the observed value is removed from the expected value. A bond length (or angle) with $|Z| > 5$ is considered an outlier worth inspection. RMSZ is the root-mean-square of all Z scores of the bond lengths (or angles).

Mol	Chain	Bond lengths		Bond angles	
		RMSZ	# Z >5	RMSZ	# Z >5
1	A	1.06	3/1027 (0.3%)	1.34	8/1396 (0.6%)
1	B	1.06	1/993 (0.1%)	1.15	3/1349 (0.2%)
1	C	1.01	1/967 (0.1%)	1.06	3/1318 (0.2%)
All	All	1.04	5/2987 (0.2%)	1.19	14/4063 (0.3%)

Chiral center outliers are detected by calculating the chiral volume of a chiral center and verifying if the center is modelled as a planar moiety or with the opposite hand. A planarity outlier is detected by checking planarity of atoms in a peptide group, atoms in a mainchain group or atoms of a sidechain that are expected to be planar.

Mol	Chain	#Chirality outliers	#Planarity outliers
1	A	0	1

All (5) bond length outliers are listed below:

Mol	Chain	Res	Type	Atoms	Z	Observed(Å)	Ideal(Å)
1	A	1186	GLU	CD-OE2	-8.48	1.16	1.25
1	A	1172	SER	CB-OG	-6.72	1.33	1.42
1	B	1088	GLU	CD-OE1	6.43	1.32	1.25
1	A	1172	SER	CA-CB	-6.22	1.43	1.52
1	C	1107	GLU	CD-OE1	-5.24	1.19	1.25

All (14) bond angle outliers are listed below:

Mol	Chain	Res	Type	Atoms	Z	Observed(°)	Ideal(°)
1	A	1091	ARG	NE-CZ-NH2	-11.23	114.69	120.30
1	A	1102[A]	TYR	CB-CA-C	-8.37	93.66	110.40
1	A	1102[B]	TYR	CB-CA-C	-8.37	93.66	110.40
1	A	1173	ARG	NE-CZ-NH1	7.07	123.83	120.30
1	A	1169	ARG	CB-CG-CD	6.62	128.82	111.60

Continued on next page...

Continued from previous page...

Mol	Chain	Res	Type	Atoms	Z	Observed(°)	Ideal(°)
1	B	1112	ARG	NE-CZ-NH2	6.54	123.57	120.30
1	A	1169	ARG	CD-NE-CZ	6.39	132.55	123.60
1	C	1127	ASP	CB-CG-OD2	-6.27	112.66	118.30
1	A	1091	ARG	NE-CZ-NH1	6.04	123.32	120.30
1	C	1103	ARG	NE-CZ-NH1	5.72	123.16	120.30
1	B	1103	ARG	CB-CG-CD	5.58	126.10	111.60
1	B	1113	GLN	CB-CG-CD	5.38	125.59	111.60
1	A	1169	ARG	NE-CZ-NH2	5.23	122.91	120.30
1	C	1134	ASP	CB-CG-OD1	5.03	122.82	118.30

There are no chirality outliers.

All (1) planarity outliers are listed below:

Mol	Chain	Res	Type	Group
1	A	1112	ARG	Mainchain

5.2 Too-close contacts

In the following table, the Non-H and H(model) columns list the number of non-hydrogen atoms and hydrogen atoms in the chain respectively. The H(added) column lists the number of hydrogen atoms added and optimized by MolProbity. The Clashes column lists the number of clashes within the asymmetric unit, whereas Symm-Clashes lists symmetry-related clashes.

Mol	Chain	Non-H	H(model)	H(added)	Clashes	Symm-Clashes
1	A	986	0	969	7	0
1	B	962	0	946	7	0
1	C	940	0	904	2	0
2	A	90	0	0	5	0
2	B	30	0	0	0	0
2	C	60	0	0	1	0
3	A	150	0	0	2	3
3	B	143	0	0	3	3
3	C	92	0	0	1	0
All	All	3453	0	2819	19	3

The all-atom clashscore is defined as the number of clashes found per 1000 atoms (including hydrogen atoms). The all-atom clashscore for this structure is 3.

All (19) close contacts within the same asymmetric unit are listed below, sorted by their clash magnitude.

Atom-1	Atom-2	Interatomic distance (Å)	Clash overlap (Å)
1:A:1140:ARG:HD3	3:A:1429:HOH:O	1.78	0.83
1:B:1183:GLU:CG	3:B:1415:HOH:O	2.34	0.74
1:A:1139:LYS:CE	2:A:1202[A]:OSQ:C12	2.68	0.71
1:A:1164:ALA:HB2	3:A:1407:HOH:O	1.92	0.68
1:B:1190:ASP:N	1:B:1191:PRO:HD2	2.12	0.65
1:B:1092:GLN:NE2	3:B:1302:HOH:O	2.31	0.63
1:A:1139:LYS:HE2	2:A:1202[A]:OSQ:C12	2.32	0.59
1:C:1115:VAL:HG23	3:C:1320:HOH:O	2.02	0.59
1:A:1185:PHE:O	1:A:1189:ILE:HG22	2.10	0.52
1:B:1190:ASP:N	1:B:1191:PRO:CD	2.75	0.49
1:A:1139:LYS:HE3	2:A:1202[A]:OSQ:C12	2.41	0.49
1:B:1140[A]:ARG:HD3	3:B:1342:HOH:O	2.12	0.48
2:A:1202[B]:OSQ:N2	2:A:1202[B]:OSQ:N4	2.65	0.44
1:B:1099:GLU:O	1:B:1103:ARG:HG3	2.19	0.43
2:C:1202:OSQ:N4	2:C:1202:OSQ:O1	2.49	0.43
1:A:1107:GLU:HA	1:A:1177:PHE:CD2	2.53	0.43
2:A:1202[B]:OSQ:F2	2:A:1202[B]:OSQ:C20	2.58	0.42
1:B:1095:MET:N	1:B:1096:PRO:CD	2.83	0.41
1:C:1090:LEU:HD21	1:C:1150:PRO:HD3	2.02	0.41

All (3) symmetry-related close contacts are listed below. The label for Atom-2 includes the symmetry operator and encoded unit-cell translations to be applied.

Atom-1	Atom-2	Interatomic distance (Å)	Clash overlap (Å)
3:A:1423:HOH:O	3:B:1375:HOH:O[2_645]	1.85	0.35
3:A:1334:HOH:O	3:B:1417:HOH:O[2_645]	1.86	0.34
3:A:1414:HOH:O	3:B:1417:HOH:O[2_645]	1.86	0.34

5.3 Torsion angles [i](#)

5.3.1 Protein backbone [i](#)

In the following table, the Percentiles column shows the percent Ramachandran outliers of the chain as a percentile score with respect to all X-ray entries followed by that with respect to entries of similar resolution.

The Analysed column shows the number of residues for which the backbone conformation was analysed, and the total number of residues.

Mol	Chain	Analysed	Favoured	Allowed	Outliers	Percentiles
1	A	115/119 (97%)	115 (100%)	0	0	100 100

Continued on next page...

Continued from previous page...

Mol	Chain	Analysed	Favoured	Allowed	Outliers	Percentiles	
1	B	113/119 (95%)	113 (100%)	0	0	100	100
1	C	112/119 (94%)	112 (100%)	0	0	100	100
All	All	340/357 (95%)	340 (100%)	0	0	100	100

There are no Ramachandran outliers to report.

5.3.2 Protein sidechains [i](#)

In the following table, the Percentiles column shows the percent sidechain outliers of the chain as a percentile score with respect to all X-ray entries followed by that with respect to entries of similar resolution.

The Analysed column shows the number of residues for which the sidechain conformation was analysed, and the total number of residues.

Mol	Chain	Analysed	Rotameric	Outliers	Percentiles	
1	A	111/112 (99%)	107 (96%)	4 (4%)	35	16
1	B	107/112 (96%)	105 (98%)	2 (2%)	57	41
1	C	101/112 (90%)	99 (98%)	2 (2%)	55	38
All	All	319/336 (95%)	311 (98%)	8 (2%)	47	29

All (8) residues with a non-rotameric sidechain are listed below:

Mol	Chain	Res	Type
1	A	1083	LYS
1	A	1089	GLU
1	A	1106	PRO
1	A	1169	ARG
1	B	1084	ILE
1	B	1113	GLN
1	C	1140	ARG
1	C	1148	GLN

Sometimes sidechains can be flipped to improve hydrogen bonding and reduce clashes. All (2) such sidechains are listed below:

Mol	Chain	Res	Type
1	B	1113	GLN
1	C	1162	ASN

5.3.3 RNA [i](#)

There are no RNA molecules in this entry.

5.4 Non-standard residues in protein, DNA, RNA chains [i](#)

There are no non-standard protein/DNA/RNA residues in this entry.

5.5 Carbohydrates [i](#)

There are no monosaccharides in this entry.

5.6 Ligand geometry [i](#)

6 ligands are modelled in this entry.

In the following table, the Counts columns list the number of bonds (or angles) for which Mogul statistics could be retrieved, the number of bonds (or angles) that are observed in the model and the number of bonds (or angles) that are defined in the Chemical Component Dictionary. The Link column lists molecule types, if any, to which the group is linked. The Z score for a bond length (or angle) is the number of standard deviations the observed value is removed from the expected value. A bond length (or angle) with $|Z| > 2$ is considered an outlier worth inspection. RMSZ is the root-mean-square of all Z scores of the bond lengths (or angles).

Mol	Type	Chain	Res	Link	Bond lengths			Bond angles		
					Counts	RMSZ	# Z > 2	Counts	RMSZ	# Z > 2
2	OSQ	A	1202[B]	-	33,33,33	2.37	7 (21%)	43,48,48	2.88	9 (20%)
2	OSQ	C	1202	-	33,33,33	2.32	8 (24%)	43,48,48	2.36	10 (23%)
2	OSQ	A	1201	-	33,33,33	1.81	7 (21%)	43,48,48	2.25	11 (25%)
2	OSQ	C	1201	-	33,33,33	2.02	6 (18%)	43,48,48	1.74	7 (16%)
2	OSQ	B	1201	-	33,33,33	2.27	10 (30%)	43,48,48	2.63	17 (39%)
2	OSQ	A	1202[A]	-	33,33,33	2.62	8 (24%)	43,48,48	3.13	14 (32%)

In the following table, the Chirals column lists the number of chiral outliers, the number of chiral centers analysed, the number of these observed in the model and the number defined in the Chemical Component Dictionary. Similar counts are reported in the Torsion and Rings columns. '-' means no outliers of that kind were identified.

Mol	Type	Chain	Res	Link	Chirals	Torsions	Rings
2	OSQ	A	1202[B]	-	-	5/13/37/37	0/4/4/4
2	OSQ	C	1202	-	-	2/13/37/37	0/4/4/4

Continued on next page...

Continued from previous page...

Mol	Type	Chain	Res	Link	Chirals	Torsions	Rings
2	OSQ	A	1201	-	-	1/13/37/37	0/4/4/4
2	OSQ	C	1201	-	-	0/13/37/37	0/4/4/4
2	OSQ	B	1201	-	-	1/13/37/37	0/4/4/4
2	OSQ	A	1202[A]	-	-	2/13/37/37	0/4/4/4

All (46) bond length outliers are listed below:

Mol	Chain	Res	Type	Atoms	Z	Observed(Å)	Ideal(Å)
2	B	1201	OSQ	C3-N1	8.57	1.44	1.34
2	A	1202[A]	OSQ	C12-N3	8.27	1.56	1.46
2	A	1202[B]	OSQ	C3-N1	8.06	1.43	1.34
2	A	1202[A]	OSQ	C3-N1	7.91	1.43	1.34
2	C	1202	OSQ	C12-N3	7.74	1.56	1.46
2	C	1202	OSQ	C3-N1	6.01	1.41	1.34
2	C	1201	OSQ	C3-N1	5.96	1.41	1.34
2	C	1201	OSQ	C22-N4	5.69	1.51	1.38
2	A	1202[B]	OSQ	C9-N2	5.34	1.45	1.33
2	C	1201	OSQ	C9-N2	5.22	1.45	1.33
2	C	1202	OSQ	C13-N3	4.98	1.55	1.46
2	A	1202[B]	OSQ	C12-N3	4.65	1.52	1.46
2	A	1202[A]	OSQ	C22-N4	4.55	1.48	1.38
2	A	1201	OSQ	C3-N1	4.46	1.39	1.34
2	A	1202[A]	OSQ	C9-N2	4.34	1.43	1.33
2	A	1201	OSQ	C9-N2	4.31	1.43	1.33
2	A	1202[B]	OSQ	C22-N4	4.21	1.48	1.38
2	A	1202[A]	OSQ	C13-N3	3.97	1.53	1.46
2	A	1202[B]	OSQ	C13-N3	3.88	1.53	1.46
2	C	1202	OSQ	C22-N4	3.81	1.47	1.38
2	B	1201	OSQ	C22-N4	3.70	1.46	1.38
2	A	1201	OSQ	C13-N3	3.56	1.52	1.46
2	A	1201	OSQ	C12-N3	3.52	1.50	1.46
2	A	1202[B]	OSQ	C4-N1	3.47	1.45	1.39
2	B	1201	OSQ	C8-C22	-3.34	1.36	1.41
2	C	1201	OSQ	C12-N3	3.31	1.50	1.46
2	C	1202	OSQ	C9-N2	3.18	1.40	1.33
2	A	1202[A]	OSQ	C4-N1	3.01	1.45	1.39
2	B	1201	OSQ	C19-C20	2.93	1.43	1.38
2	B	1201	OSQ	C21-C16	-2.81	1.36	1.40
2	B	1201	OSQ	O1-C9	2.72	1.29	1.23
2	A	1201	OSQ	C5-C4	-2.60	1.35	1.39
2	A	1202[A]	OSQ	C22-C4	-2.58	1.37	1.40
2	C	1202	OSQ	C8-C22	-2.51	1.37	1.41

Continued on next page...

Continued from previous page...

Mol	Chain	Res	Type	Atoms	Z	Observed(Å)	Ideal(Å)
2	B	1201	OSQ	C2-C3	-2.50	1.49	1.51
2	A	1201	OSQ	C4-N1	2.43	1.44	1.39
2	B	1201	OSQ	C4-N1	2.42	1.44	1.39
2	C	1201	OSQ	C4-N1	2.33	1.43	1.39
2	C	1202	OSQ	C4-N1	2.31	1.43	1.39
2	A	1201	OSQ	C21-C16	-2.30	1.37	1.40
2	B	1201	OSQ	C13-N3	2.22	1.50	1.46
2	A	1202[A]	OSQ	C10-N2	-2.20	1.40	1.45
2	A	1202[B]	OSQ	C22-C4	-2.20	1.38	1.40
2	B	1201	OSQ	C6-C7	2.09	1.42	1.38
2	C	1201	OSQ	C2-N4	-2.02	1.43	1.46
2	C	1202	OSQ	C7-C8	-2.00	1.36	1.39

All (68) bond angle outliers are listed below:

Mol	Chain	Res	Type	Atoms	Z	Observed(°)	Ideal(°)
2	A	1202[A]	OSQ	F2-C11-F1	13.12	113.19	104.16
2	A	1202[B]	OSQ	C12-N3-C21	-9.66	107.38	121.94
2	A	1202[B]	OSQ	C16-C21-N3	9.10	128.61	121.60
2	B	1201	OSQ	F2-C11-F1	8.61	110.08	104.16
2	A	1202[B]	OSQ	F2-C11-F1	8.47	109.99	104.16
2	A	1201	OSQ	F2-C11-F1	8.38	109.93	104.16
2	C	1202	OSQ	F2-C11-F1	7.74	109.49	104.16
2	C	1201	OSQ	F2-C11-F1	7.31	109.19	104.16
2	A	1202[A]	OSQ	C16-C21-N3	7.22	127.16	121.60
2	C	1202	OSQ	C12-N3-C21	-6.94	111.48	121.94
2	A	1201	OSQ	C16-C21-N3	6.70	126.76	121.60
2	A	1202[A]	OSQ	C11-C12-N3	-6.66	94.79	111.62
2	B	1201	OSQ	O2-C3-C2	6.13	128.96	120.05
2	B	1201	OSQ	O2-C3-N1	-5.48	115.98	122.16
2	C	1202	OSQ	C10-N2-C9	-5.16	114.72	122.88
2	A	1202[A]	OSQ	C12-N3-C21	-4.81	114.69	121.94
2	A	1202[A]	OSQ	C22-C8-C9	4.56	125.46	120.85
2	C	1202	OSQ	C11-C12-N3	-4.46	100.34	111.62
2	B	1201	OSQ	C8-C22-C4	4.24	123.55	119.01
2	A	1202[B]	OSQ	C13-N3-C21	-4.03	103.84	117.99
2	A	1202[A]	OSQ	C1-C2-N4	-3.95	105.94	110.33
2	B	1201	OSQ	C4-C22-N4	-3.92	115.02	119.31
2	A	1202[B]	OSQ	C11-C12-N3	-3.68	102.33	111.62
2	A	1202[B]	OSQ	C20-C21-N3	-3.48	113.55	119.11
2	A	1201	OSQ	O1-C9-N2	-3.43	115.91	122.59
2	C	1202	OSQ	C1-C2-N4	-3.41	106.54	110.33

Continued on next page...

Continued from previous page...

Mol	Chain	Res	Type	Atoms	Z	Observed(°)	Ideal(°)
2	B	1201	OSQ	C22-C4-N1	3.37	121.82	118.59
2	B	1201	OSQ	C18-C19-C20	-3.34	116.12	120.24
2	A	1202[A]	OSQ	F2-C11-C12	-3.26	102.56	111.15
2	B	1201	OSQ	C14-C15-C16	-3.24	104.69	112.43
2	A	1202[A]	OSQ	C1-C2-C3	-3.08	107.10	111.17
2	B	1201	OSQ	C11-C12-N3	-3.07	103.88	111.62
2	C	1202	OSQ	O2-C3-N1	-3.06	118.70	122.16
2	A	1201	OSQ	C22-C4-N1	3.05	121.51	118.59
2	A	1202[A]	OSQ	C5-C4-C22	3.03	121.18	117.55
2	A	1202[A]	OSQ	C20-C21-N3	-2.99	114.33	119.11
2	A	1201	OSQ	C4-C22-N4	-2.97	116.06	119.31
2	C	1201	OSQ	C4-C22-N4	-2.91	116.13	119.31
2	C	1201	OSQ	C10-N2-C9	-2.84	118.39	122.88
2	C	1201	OSQ	C5-C4-C22	2.83	120.94	117.55
2	A	1201	OSQ	C5-C4-C22	2.74	120.83	117.55
2	C	1202	OSQ	C16-C21-N3	2.72	123.70	121.60
2	A	1202[A]	OSQ	O2-C3-N1	-2.65	119.17	122.16
2	B	1201	OSQ	C22-C8-C9	2.65	123.53	120.85
2	B	1201	OSQ	C1-C2-C3	-2.62	107.71	111.17
2	C	1202	OSQ	C14-C13-N3	2.61	116.00	111.06
2	C	1202	OSQ	F1-C11-C12	-2.56	104.39	111.15
2	B	1201	OSQ	C15-C16-C17	-2.53	115.77	121.05
2	A	1202[B]	OSQ	C17-C16-C21	2.52	121.59	118.27
2	B	1201	OSQ	C4-N1-C3	-2.44	121.31	124.83
2	B	1201	OSQ	C20-C21-N3	-2.39	115.29	119.11
2	C	1201	OSQ	O2-C3-C2	2.38	123.52	120.05
2	B	1201	OSQ	C5-C4-C22	2.38	120.40	117.55
2	C	1202	OSQ	C22-C8-C9	-2.34	118.48	120.85
2	A	1201	OSQ	C1-C2-N4	-2.34	107.73	110.33
2	A	1202[B]	OSQ	C5-C4-C22	2.29	120.29	117.55
2	A	1202[B]	OSQ	C1-C2-N4	-2.27	107.81	110.33
2	A	1201	OSQ	C8-C22-C4	2.22	121.39	119.01
2	A	1201	OSQ	C4-N1-C3	-2.20	121.66	124.83
2	B	1201	OSQ	C12-N3-C21	-2.18	118.65	121.94
2	A	1201	OSQ	C20-C21-N3	-2.17	115.65	119.11
2	C	1201	OSQ	O2-C3-N1	-2.14	119.74	122.16
2	A	1202[A]	OSQ	C7-C8-C9	-2.14	112.83	118.53
2	A	1202[A]	OSQ	C14-C15-C16	-2.13	107.35	112.43
2	C	1201	OSQ	C8-C22-C4	2.13	121.29	119.01
2	A	1201	OSQ	C10-N2-C9	-2.07	119.60	122.88
2	B	1201	OSQ	C10-N2-C9	-2.04	119.66	122.88
2	A	1202[A]	OSQ	C7-C8-C22	2.03	121.65	118.71

There are no chirality outliers.

All (11) torsion outliers are listed below:

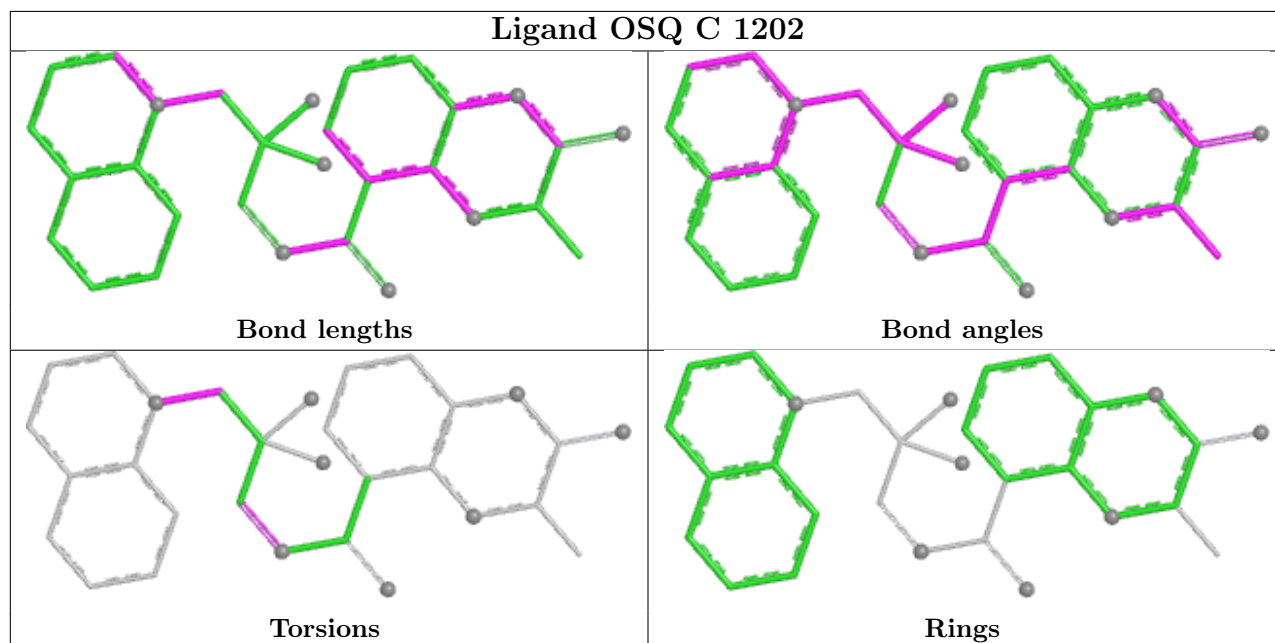
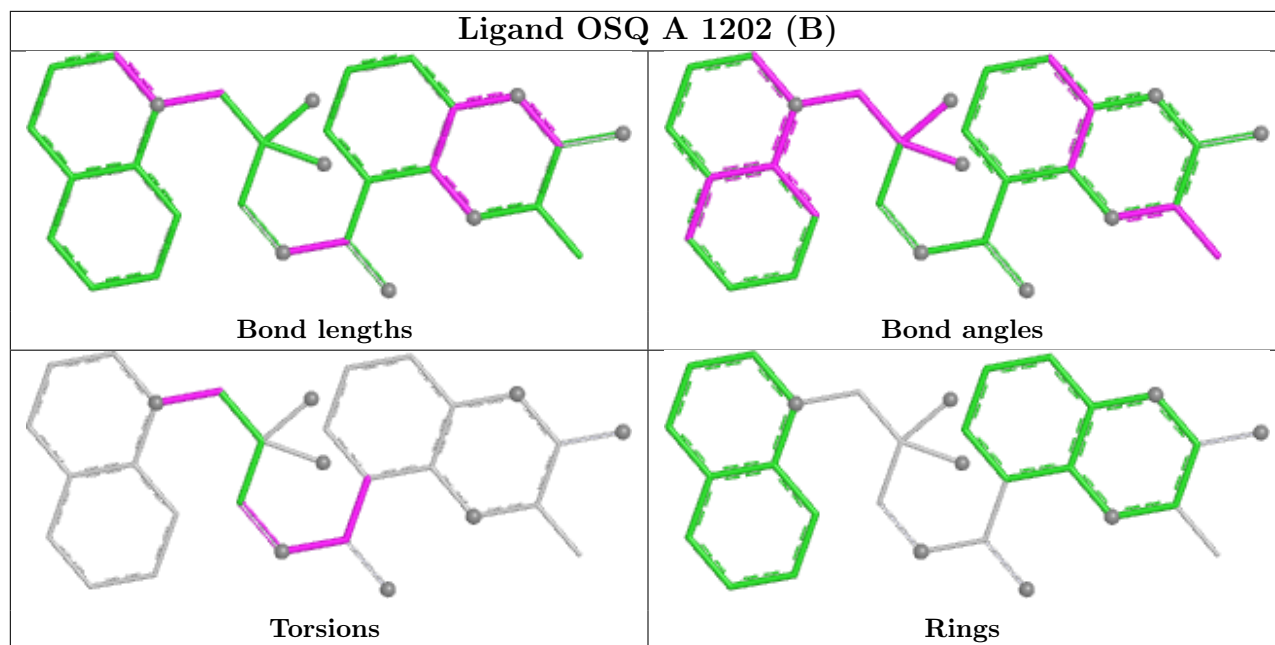
Mol	Chain	Res	Type	Atoms
2	A	1202[A]	OSQ	F1-C11-C12-N3
2	A	1202[A]	OSQ	F2-C11-C12-N3
2	C	1202	OSQ	C11-C10-N2-C9
2	C	1202	OSQ	C11-C12-N3-C21
2	A	1202[B]	OSQ	O1-C9-N2-C10
2	A	1201	OSQ	C11-C12-N3-C21
2	A	1202[B]	OSQ	C22-C8-C9-N2
2	A	1202[B]	OSQ	C22-C8-C9-O1
2	A	1202[B]	OSQ	C11-C10-N2-C9
2	A	1202[B]	OSQ	C11-C12-N3-C21
2	B	1201	OSQ	C11-C12-N3-C21

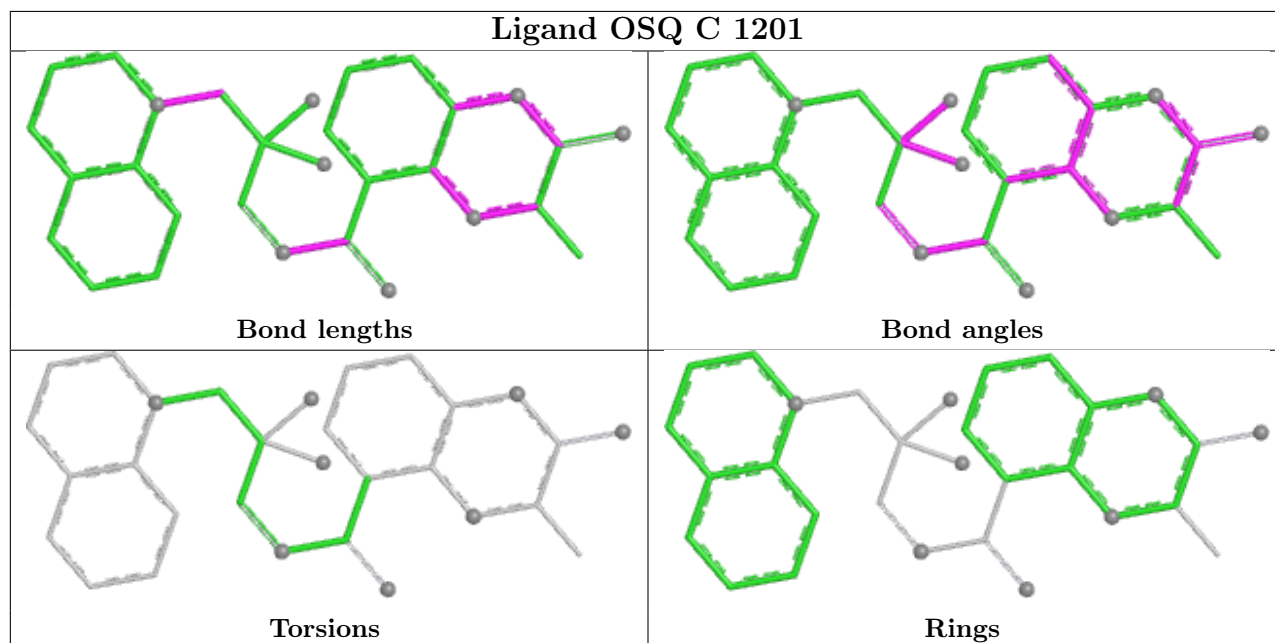
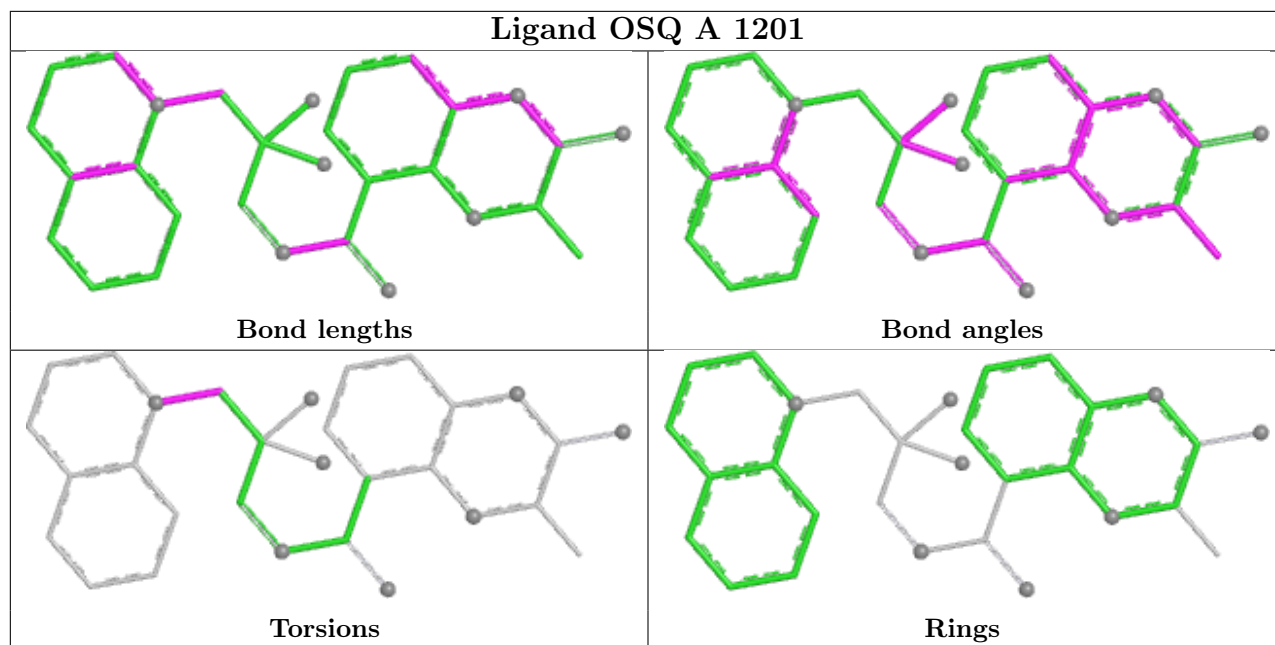
There are no ring outliers.

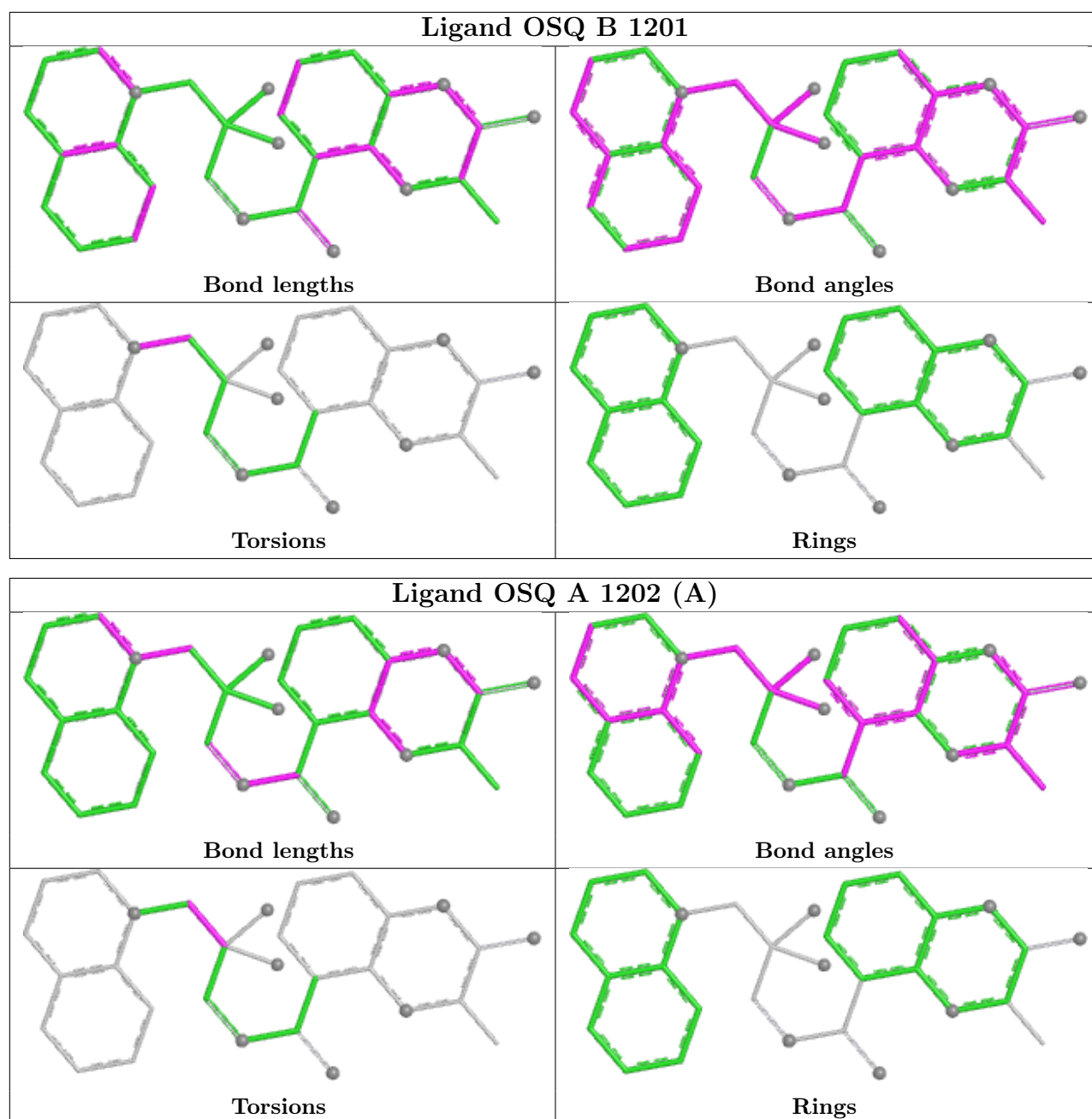
3 monomers are involved in 6 short contacts:

Mol	Chain	Res	Type	Clashes	Symm-Clashes
2	A	1202[B]	OSQ	2	0
2	C	1202	OSQ	1	0
2	A	1202[A]	OSQ	3	0

The following is a two-dimensional graphical depiction of Mogul quality analysis of bond lengths, bond angles, torsion angles, and ring geometry for all instances of the Ligand of Interest. In addition, ligands with molecular weight > 250 and outliers as shown on the validation Tables will also be included. For torsion angles, if less than 5% of the Mogul distribution of torsion angles is within 10 degrees of the torsion angle in question, then that torsion angle is considered an outlier. Any bond that is central to one or more torsion angles identified as an outlier by Mogul will be highlighted in the graph. For rings, the root-mean-square deviation (RMSD) between the ring in question and similar rings identified by Mogul is calculated over all ring torsion angles. If the average RMSD is greater than 60 degrees and the minimal RMSD between the ring in question and any Mogul-identified rings is also greater than 60 degrees, then that ring is considered an outlier. The outliers are highlighted in purple. The color gray indicates Mogul did not find sufficient equivalents in the CSD to analyse the geometry.







5.7 Other polymers [i](#)

There are no such residues in this entry.

5.8 Polymer linkage issues [i](#)

There are no chain breaks in this entry.

6 Fit of model and data [i](#)

6.1 Protein, DNA and RNA chains [i](#)

In the following table, the column labelled ‘#RSRZ > 2’ contains the number (and percentage) of RSRZ outliers, followed by percent RSRZ outliers for the chain as percentile scores relative to all X-ray entries and entries of similar resolution. The OWAB column contains the minimum, median, 95th percentile and maximum values of the occupancy-weighted average B-factor per residue. The column labelled ‘Q < 0.9’ lists the number of (and percentage) of residues with an average occupancy less than 0.9.

Mol	Chain	Analysed	<RSRZ>	#RSRZ>2	OWAB(Å ²)	Q<0.9
1	A	114/119 (95%)	-0.51	0 100 100	18, 25, 52, 75	0
1	B	114/119 (95%)	-0.40	3 (2%) 56 60	21, 28, 58, 84	0
1	C	113/119 (94%)	-0.26	6 (5%) 26 29	25, 36, 72, 94	0
All	All	341/357 (95%)	-0.39	9 (2%) 56 60	18, 30, 60, 94	0

All (9) RSRZ outliers are listed below:

Mol	Chain	Res	Type	RSRZ
1	C	1196	LEU	3.4
1	C	1085	PHE	3.4
1	C	1145	GLY	3.3
1	B	1194	GLN	2.8
1	B	1151	TRP	2.4
1	C	1090	LEU	2.2
1	C	1087	PRO	2.2
1	C	1084	ILE	2.1
1	B	1190	ASP	2.0

6.2 Non-standard residues in protein, DNA, RNA chains [i](#)

There are no non-standard protein/DNA/RNA residues in this entry.

6.3 Carbohydrates [i](#)

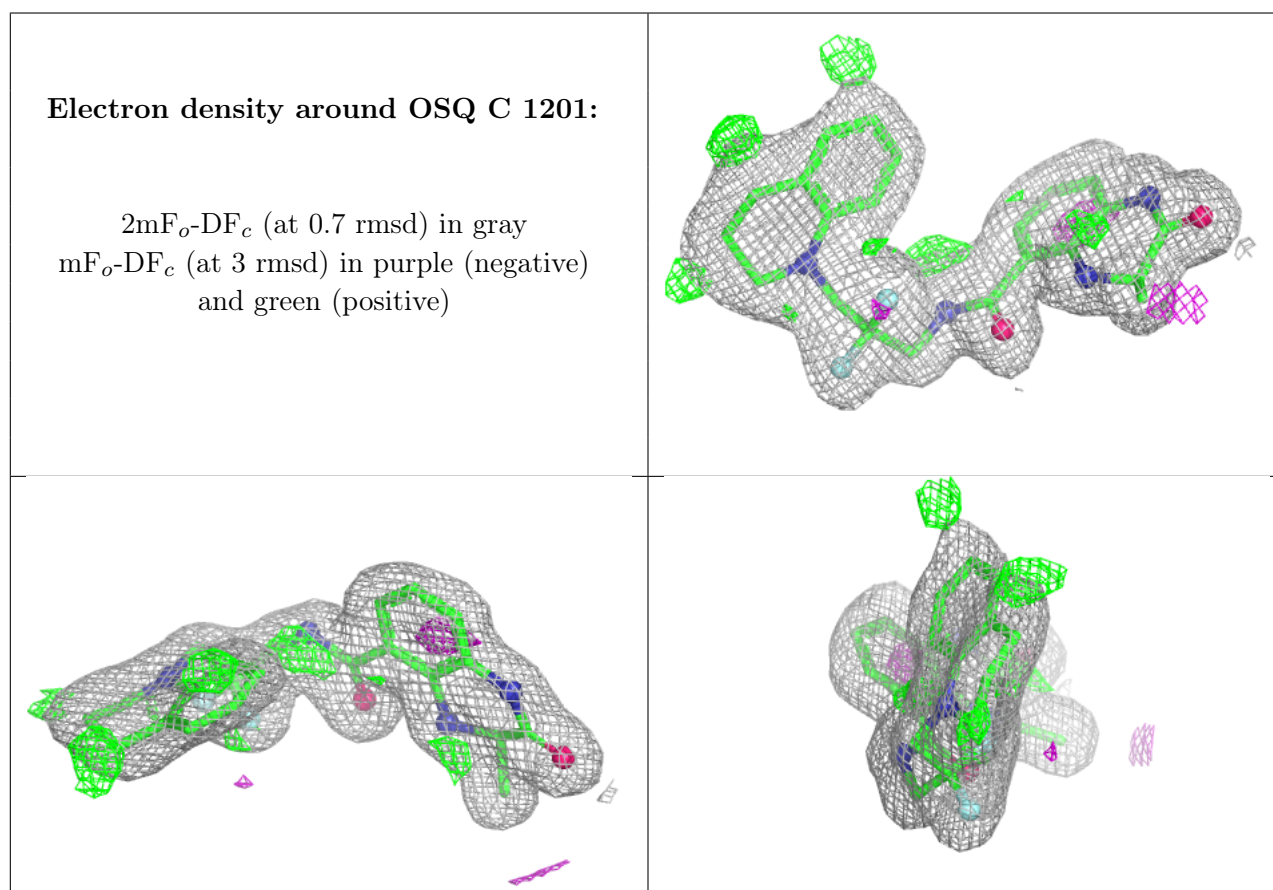
There are no monosaccharides in this entry.

6.4 Ligands [i](#)

In the following table, the Atoms column lists the number of modelled atoms in the group and the number defined in the chemical component dictionary. The B-factors column lists the minimum, median, 95th percentile and maximum values of B factors of atoms in the group. The column labelled 'Q<0.9' lists the number of atoms with occupancy less than 0.9.

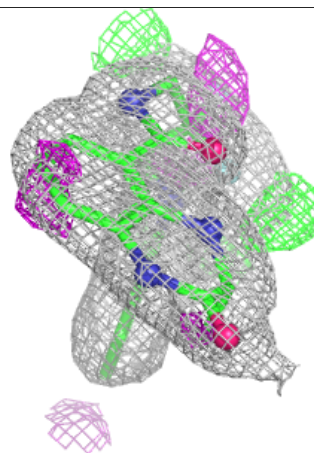
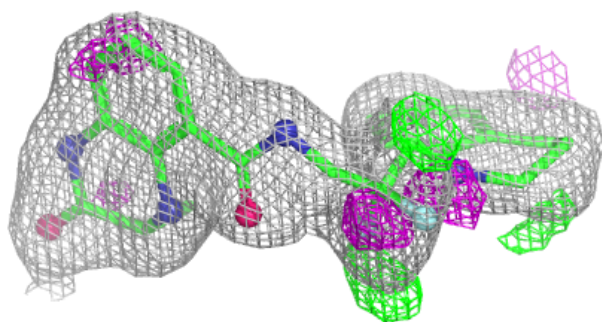
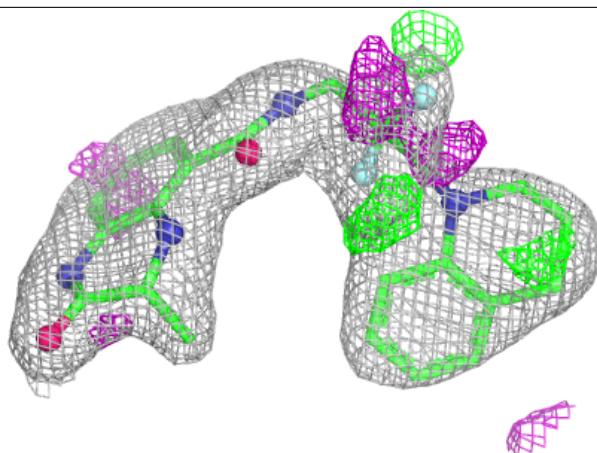
Mol	Type	Chain	Res	Atoms	RSCC	RSR	B-factors(Å ²)	Q<0.9
2	OSQ	C	1201	30/30	0.93	0.08	24,38,49,52	0
2	OSQ	C	1202	30/30	0.93	0.15	30,47,71,76	0
2	OSQ	B	1201	30/30	0.96	0.07	18,23,34,38	0
2	OSQ	A	1202[B]	30/30	0.97	0.08	23,31,43,45	30
2	OSQ	A	1202[A]	30/30	0.97	0.08	19,27,44,53	30
2	OSQ	A	1201	30/30	0.98	0.06	18,23,31,34	0

The following is a graphical depiction of the model fit to experimental electron density of all instances of the Ligand of Interest. In addition, ligands with molecular weight > 250 and outliers as shown on the geometry validation Tables will also be included. Each fit is shown from different orientation to approximate a three-dimensional view.

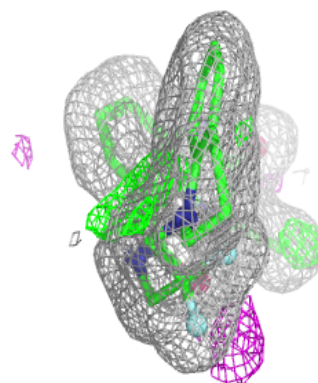
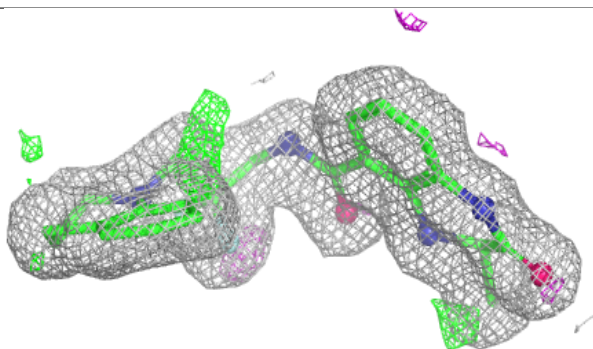
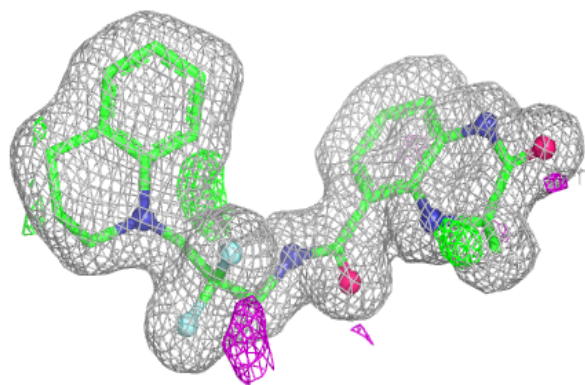


Electron density around OSQ C 1202:

$2mF_o-DF_c$ (at 0.7 rmsd) in gray
 mF_o-DF_c (at 3 rmsd) in purple (negative)
and green (positive)

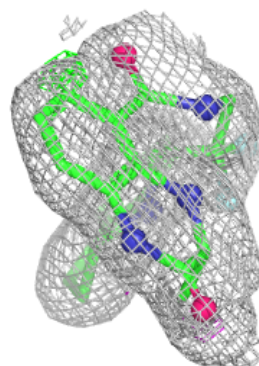
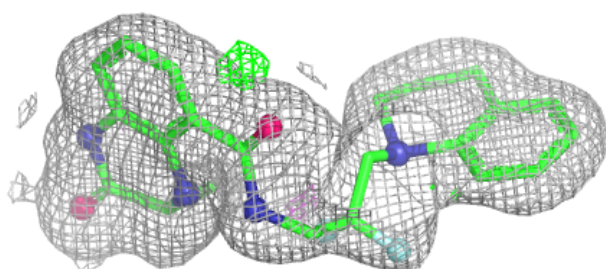
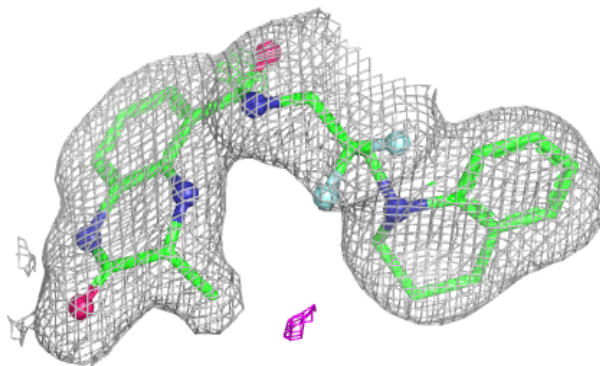
**Electron density around OSQ B 1201:**

$2mF_o-DF_c$ (at 0.7 rmsd) in gray
 mF_o-DF_c (at 3 rmsd) in purple (negative)
and green (positive)

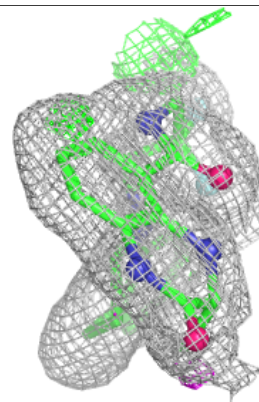
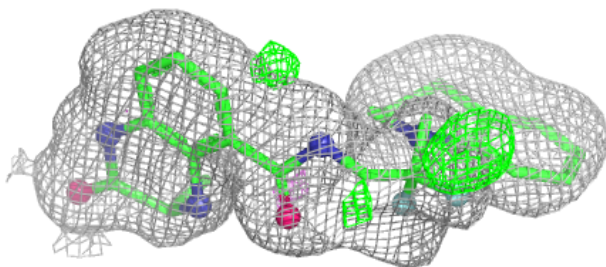
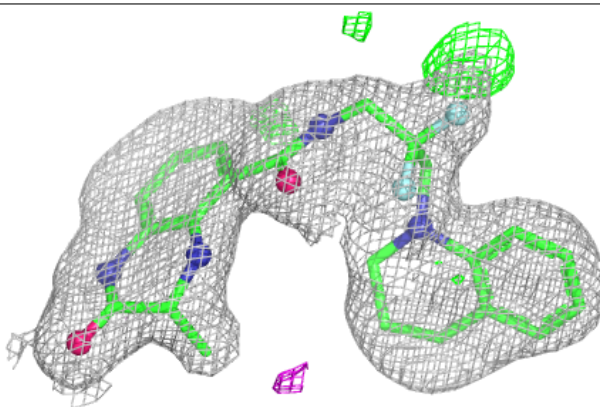


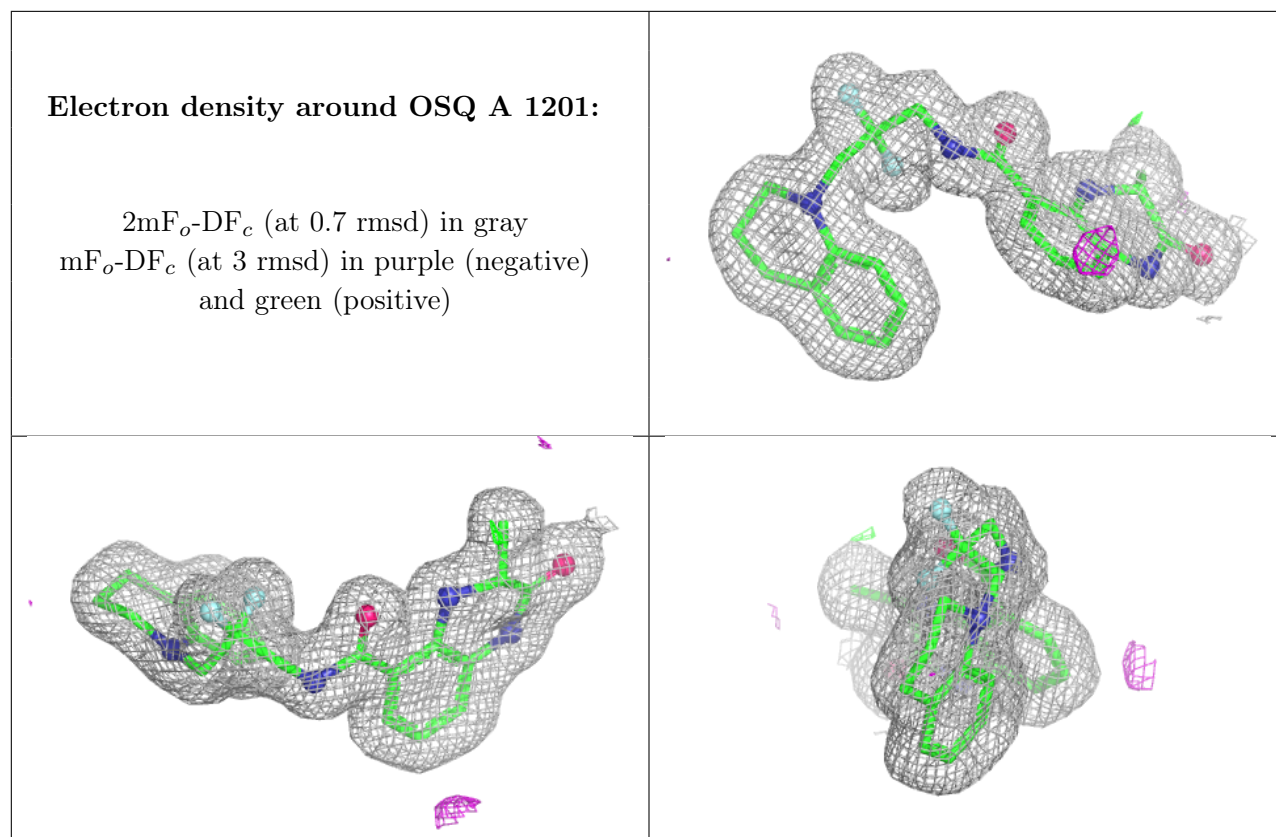
Electron density around OSQ A 1202 (B):

$2mF_o-DF_c$ (at 0.7 rmsd) in gray
 mF_o-DF_c (at 3 rmsd) in purple (negative)
and green (positive)

**Electron density around OSQ A 1202 (A):**

$2mF_o-DF_c$ (at 0.7 rmsd) in gray
 mF_o-DF_c (at 3 rmsd) in purple (negative)
and green (positive)





6.5 Other polymers [i](#)

There are no such residues in this entry.