



# Full wwPDB X-ray Structure Validation Report ⓘ

Nov 23, 2023 – 12:58 AM JST

PDB ID : 7YMK  
Title : Estrogen Receptor Alpha Ligand Binding Domain C381S C417S Y537S Mutant in Complex with an Covalent Selective Estrogen Receptor Degradar 29c and GRIP Peptide  
Authors : Min, J.; Hu, H.B.; Yang, Y.; Dong, C.E.; Zhou, H.B.; Chen, C.-C.; Guo, R.-T.  
Deposited on : 2022-07-28  
Resolution : 2.25 Å(reported)

This is a Full wwPDB X-ray Structure Validation Report for a publicly released PDB entry.

We welcome your comments at [validation@mail.wwpdb.org](mailto:validation@mail.wwpdb.org)

A user guide is available at

<https://www.wwpdb.org/validation/2017/XrayValidationReportHelp>

with specific help available everywhere you see the ⓘ symbol.

The types of validation reports are described at

<http://www.wwpdb.org/validation/2017/FAQs#types>.

---

The following versions of software and data (see [references ⓘ](#)) were used in the production of this report:

MolProbity : 4.02b-467  
Mogul : 1.8.5 (274361), CSD as541be (2020)  
Xtriage (Phenix) : 1.13  
EDS : 2.36  
buster-report : 1.1.7 (2018)  
Percentile statistics : 20191225.v01 (using entries in the PDB archive December 25th 2019)  
Refmac : 5.8.0158  
CCP4 : 7.0.044 (Gargrove)  
Ideal geometry (proteins) : Engh & Huber (2001)  
Ideal geometry (DNA, RNA) : Parkinson et al. (1996)  
Validation Pipeline (wwPDB-VP) : 2.36

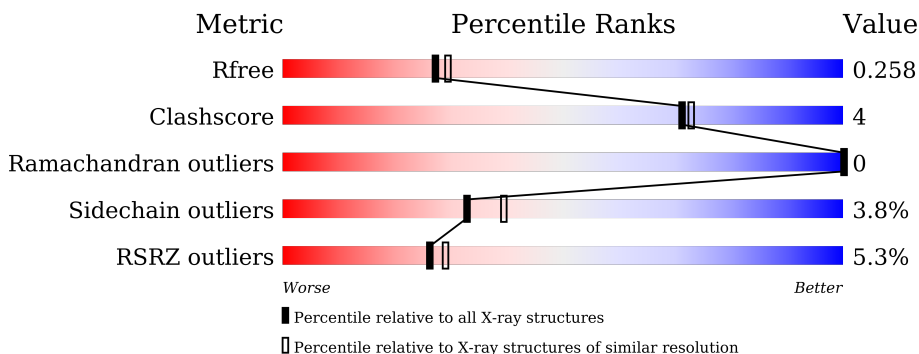
# 1 Overall quality at a glance

The following experimental techniques were used to determine the structure:

*X-RAY DIFFRACTION*

The reported resolution of this entry is 2.25 Å.

Percentile scores (ranging between 0-100) for global validation metrics of the entry are shown in the following graphic. The table shows the number of entries on which the scores are based.



Metric	Whole archive (#Entries)	Similar resolution (#Entries, resolution range(Å))
$R_{free}$	130704	1377 (2.26-2.26)
Clashscore	141614	1487 (2.26-2.26)
Ramachandran outliers	138981	1449 (2.26-2.26)
Sidechain outliers	138945	1450 (2.26-2.26)
RSRZ outliers	127900	1356 (2.26-2.26)

The table below summarises the geometric issues observed across the polymeric chains and their fit to the electron density. The red, orange, yellow and green segments of the lower bar indicate the fraction of residues that contain outliers for  $\geq 3$ , 2, 1 and 0 types of geometric quality criteria respectively. A grey segment represents the fraction of residues that are not modelled. The numeric value for each fraction is indicated below the corresponding segment, with a dot representing fractions  $\leq 5\%$ . The upper red bar (where present) indicates the fraction of residues that have poor fit to the electron density. The numeric value is given above the bar.

Mol	Chain	Length	Quality of chain
1	A	260	<p>3% 82% 9% 9%</p>
1	B	260	<p>4% 73% 10% 15%</p>
2	C	8	<p>100%</p>
2	D	8	<p>62% 75% 25%</p>

## 2 Entry composition i

There are 6 unique types of molecules in this entry. The entry contains 3965 atoms, of which 0 are hydrogens and 0 are deuteriums.

In the tables below, the ZeroOcc column contains the number of atoms modelled with zero occupancy, the AltConf column contains the number of residues with at least one atom in alternate conformation and the Trace column contains the number of residues modelled with at most 2 atoms.

- Molecule 1 is a protein called Estrogen receptor.

Mol	Chain	Residues	Atoms					ZeroOcc	AltConf	Trace
			Total	C	N	O	S			
1	A	237	1875	1197	325	336	17	0	1	0
1	B	220	1748	1118	300	316	14	0	0	0

There are 26 discrepancies between the modelled and reference sequences:

Chain	Residue	Modelled	Actual	Comment	Reference
A	295	ALA	-	linker	UNP P03372
A	296	GLY	-	linker	UNP P03372
A	297	ALA	-	linker	UNP P03372
A	298	GLY	-	linker	UNP P03372
A	299	ALA	-	linker	UNP P03372
A	300	GLY	-	linker	UNP P03372
A	301	ALA	-	linker	UNP P03372
A	302	GLY	-	linker	UNP P03372
A	303	ALA	-	linker	UNP P03372
A	304	GLY	-	linker	UNP P03372
A	381	SER	CYS	engineered mutation	UNP P03372
A	417	SER	CYS	engineered mutation	UNP P03372
A	537	SER	TYR	engineered mutation	UNP P03372
B	295	ALA	-	linker	UNP P03372
B	296	GLY	-	linker	UNP P03372
B	297	ALA	-	linker	UNP P03372
B	298	GLY	-	linker	UNP P03372
B	299	ALA	-	linker	UNP P03372
B	300	GLY	-	linker	UNP P03372
B	301	ALA	-	linker	UNP P03372
B	302	GLY	-	linker	UNP P03372
B	303	ALA	-	linker	UNP P03372
B	304	GLY	-	linker	UNP P03372
B	381	SER	CYS	engineered mutation	UNP P03372
B	417	SER	CYS	engineered mutation	UNP P03372

*Continued on next page...*

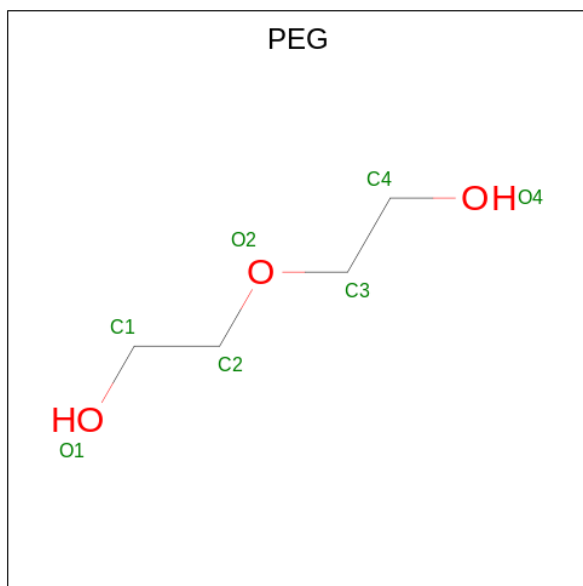
Continued from previous page...

Chain	Residue	Modelled	Actual	Comment	Reference
B	537	SER	TYR	engineered mutation	UNP P03372

- Molecule 2 is a protein called Grip peptide.

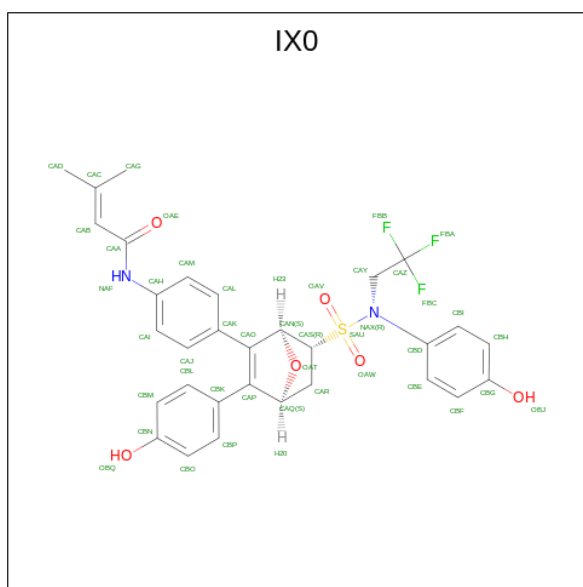
Mol	Chain	Residues	Atoms				ZeroOcc	AltConf	Trace
2	C	8	Total	C	N	O	0	0	0
			67	44	14	9			
2	D	8	Total	C	N	O	0	0	0
			67	44	14	9			

- Molecule 3 is DI(HYDROXYETHYL)ETHER (three-letter code: PEG) (formula: C<sub>4</sub>H<sub>10</sub>O<sub>3</sub>).



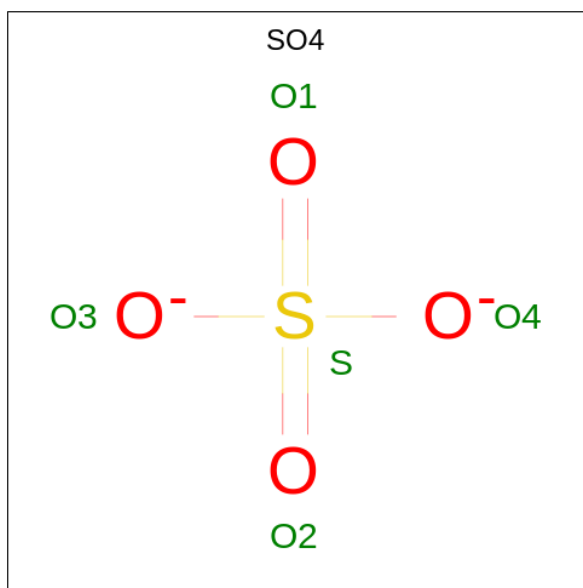
Mol	Chain	Residues	Atoms			ZeroOcc	AltConf
3	A	1	Total	C	O	0	0
			7	4	3		

- Molecule 4 is N-(4-((1S,4S,6R)-3-(4-hydroxyphenyl)-6-(N-(4-hydroxyphenyl)-N-(2,2,2-trifluoroethyl)sulfamoyl)-7-oxabicyclo[2.2.1]hept-2-en-2-yl)phenyl)-3-methylbut-2-enamide (three-letter code: IX0) (formula: C<sub>31</sub>H<sub>29</sub>F<sub>3</sub>N<sub>2</sub>O<sub>6</sub>S) (labeled as "Ligand of Interest" by depositor).



Mol	Chain	Residues	Atoms					ZeroOcc	AltConf	
			Total	C	F	N	O			S
4	B	1	43	31	3	2	6	1	0	0

- Molecule 5 is SULFATE ION (three-letter code: SO4) (formula: O<sub>4</sub>S).



Mol	Chain	Residues	Atoms		ZeroOcc	AltConf
			Total	O S		
5	B	1	5	4 1	0	0

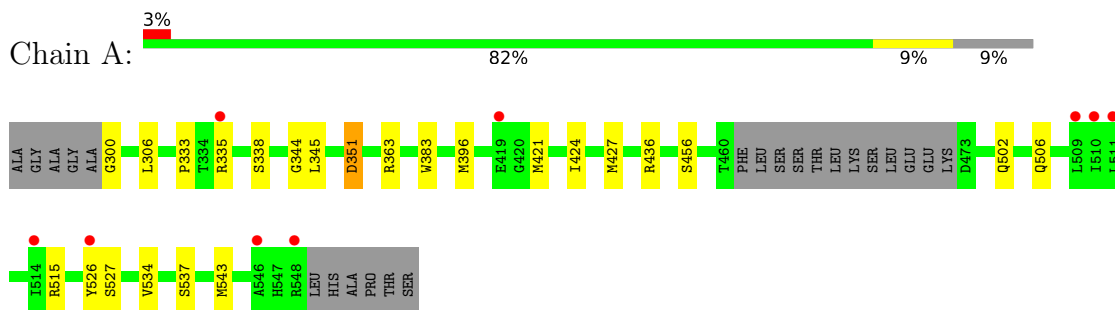
- Molecule 6 is water.

Mol	Chain	Residues	Atoms	ZeroOcc	AltConf
6	A	88	Total O 88 88	0	0
6	C	3	Total O 3 3	0	0
6	B	60	Total O 60 60	0	0
6	D	2	Total O 2 2	0	0

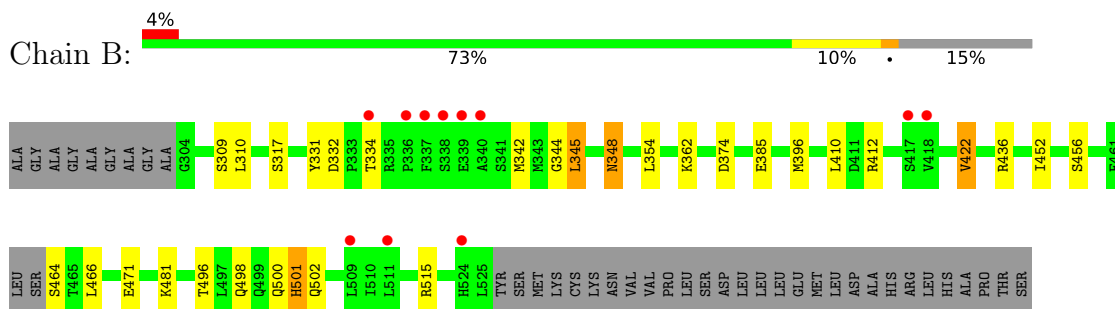
### 3 Residue-property plots [i](#)

These plots are drawn for all protein, RNA, DNA and oligosaccharide chains in the entry. The first graphic for a chain summarises the proportions of the various outlier classes displayed in the second graphic. The second graphic shows the sequence view annotated by issues in geometry and electron density. Residues are color-coded according to the number of geometric quality criteria for which they contain at least one outlier: green = 0, yellow = 1, orange = 2 and red = 3 or more. A red dot above a residue indicates a poor fit to the electron density ( $RSRZ > 2$ ). Stretches of 2 or more consecutive residues without any outlier are shown as a green connector. Residues present in the sample, but not in the model, are shown in grey.

- Molecule 1: Estrogen receptor



- Molecule 1: Estrogen receptor

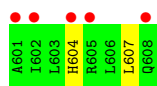
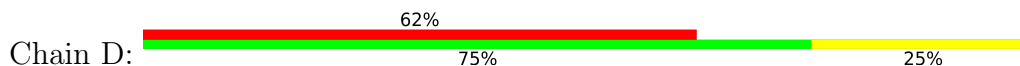


- Molecule 2: Grip peptide



There are no outlier residues recorded for this chain.

- Molecule 2: Grip peptide



## 4 Data and refinement statistics

Property	Value	Source
Space group	C 2 2 21	Depositor
Cell constants a, b, c, $\alpha$ , $\beta$ , $\gamma$	52.48Å 101.48Å 195.81Å 90.00° 90.00° 90.00°	Depositor
Resolution (Å)	33.78 – 2.25 33.76 – 2.25	Depositor EDS
% Data completeness (in resolution range)	99.8 (33.78-2.25) 99.8 (33.76-2.25)	Depositor EDS
$R_{merge}$	0.09	Depositor
$R_{sym}$	(Not available)	Depositor
$\langle I/\sigma(I) \rangle$ <sup>1</sup>	1.68 (at 2.24Å)	Xtrriage
Refinement program	REFMAC 5.8.0258	Depositor
R, $R_{free}$	0.194 , 0.253 0.199 , 0.258	Depositor DCC
$R_{free}$ test set	1268 reflections (5.01%)	wwPDB-VP
Wilson B-factor (Å <sup>2</sup> )	35.8	Xtrriage
Anisotropy	0.695	Xtrriage
Bulk solvent $k_{sol}$ (e/Å <sup>3</sup> ), $B_{sol}$ (Å <sup>2</sup> )	0.34 , 38.1	EDS
L-test for twinning <sup>2</sup>	$\langle  L  \rangle = 0.47$ , $\langle L^2 \rangle = 0.30$	Xtrriage
Estimated twinning fraction	No twinning to report.	Xtrriage
$F_o, F_c$ correlation	0.95	EDS
Total number of atoms	3965	wwPDB-VP
Average B, all atoms (Å <sup>2</sup> )	47.0	wwPDB-VP

Xtrriage's analysis on translational NCS is as follows: *The largest off-origin peak in the Patterson function is 6.32% of the height of the origin peak. No significant pseudotranslation is detected.*

<sup>1</sup>Intensities estimated from amplitudes.

<sup>2</sup>Theoretical values of  $\langle |L| \rangle$ ,  $\langle L^2 \rangle$  for acentric reflections are 0.5, 0.333 respectively for untwinned datasets, and 0.375, 0.2 for perfectly twinned datasets.



## 5 Model quality [i](#)

### 5.1 Standard geometry [i](#)

Bond lengths and bond angles in the following residue types are not validated in this section: PEG, IX0, SO4

The Z score for a bond length (or angle) is the number of standard deviations the observed value is removed from the expected value. A bond length (or angle) with  $|Z| > 5$  is considered an outlier worth inspection. RMSZ is the root-mean-square of all Z scores of the bond lengths (or angles).

Mol	Chain	Bond lengths		Bond angles	
		RMSZ	# Z  >5	RMSZ	# Z  >5
1	A	0.75	0/1913	0.82	0/2585
1	B	0.74	0/1780	0.84	0/2404
2	C	0.74	0/67	0.70	0/89
2	D	0.76	0/67	0.85	0/89
All	All	0.74	0/3827	0.83	0/5167

There are no bond length outliers.

There are no bond angle outliers.

There are no chirality outliers.

There are no planarity outliers.

### 5.2 Too-close contacts [i](#)

In the following table, the Non-H and H(model) columns list the number of non-hydrogen atoms and hydrogen atoms in the chain respectively. The H(added) column lists the number of hydrogen atoms added and optimized by MolProbity. The Clashes column lists the number of clashes within the asymmetric unit, whereas Symm-Clashes lists symmetry-related clashes.

Mol	Chain	Non-H	H(model)	H(added)	Clashes	Symm-Clashes
1	A	1875	0	1920	12	0
1	B	1748	0	1790	15	0
2	C	67	0	76	0	0
2	D	67	0	76	1	0
3	A	7	0	10	0	0
4	B	43	0	0	0	0
5	B	5	0	0	0	0
6	A	88	0	0	3	0
6	B	60	0	0	0	0

*Continued on next page...*

*Continued from previous page...*

Mol	Chain	Non-H	H(model)	H(added)	Clashes	Symm-Clashes
6	C	3	0	0	0	0
6	D	2	0	0	0	0
All	All	3965	0	3872	27	0

The all-atom clashscore is defined as the number of clashes found per 1000 atoms (including hydrogen atoms). The all-atom clashscore for this structure is 4.

All (27) close contacts within the same asymmetric unit are listed below, sorted by their clash magnitude.

Atom-1	Atom-2	Interatomic distance (Å)	Clash overlap (Å)
1:B:332:ASP:OD2	1:B:334:THR:HB	1.79	0.81
1:B:396:MET:O	1:B:436:ARG:NH2	2.22	0.69
1:B:331:TYR:CD2	1:B:345:LEU:HD23	2.32	0.64
1:B:498:GLN:HA	1:B:501:HIS:CE1	2.40	0.56
1:B:362:LYS:HE3	2:D:607:LEU:HD23	1.90	0.54
1:B:342:MET:HE1	1:B:410:LEU:HD13	1.91	0.53
1:B:310:LEU:O	1:B:481:LYS:NZ	2.30	0.50
1:A:363:ARG:NH1	6:A:705:HOH:O	2.44	0.50
1:A:396:MET:O	1:A:436:ARG:HD3	2.11	0.49
1:A:333:PRO:HB3	1:A:345:LEU:HD11	1.95	0.49
1:B:456:SER:HA	1:B:515:ARG:NH2	2.27	0.48
1:B:385:GLU:HB3	1:B:452:ILE:HG21	1.96	0.48
1:A:383:TRP:NE1	1:A:543:MET:HB3	2.31	0.46
1:A:351:ASP:OD2	1:A:537:SER:HB3	2.15	0.45
1:B:374:ASP:OD2	1:B:471:GLU:OE1	2.35	0.45
1:A:502:GLN:O	1:A:506:GLN:HG3	2.17	0.45
1:B:498:GLN:O	1:B:502:GLN:HG3	2.16	0.45
1:B:496:THR:O	1:B:500:GLN:HG3	2.17	0.44
1:A:300:GLY:N	6:A:709:HOH:O	2.51	0.44
1:B:412:ARG:NH2	1:B:422:VAL:CG2	2.82	0.43
1:A:421:MET:HE1	6:A:702:HOH:O	2.19	0.42
1:B:344:GLY:O	1:B:348:ASN:HB2	2.20	0.42
1:A:344:GLY:HA2	1:A:534:VAL:HG21	2.02	0.41
1:A:456:SER:HA	1:A:515:ARG:NH2	2.35	0.41
1:A:383:TRP:CE2	1:A:543:MET:HB3	2.55	0.41
1:A:424:ILE:HD13	1:A:427:MET:HE2	2.03	0.40
1:B:332:ASP:OD2	1:B:334:THR:CB	2.61	0.40

There are no symmetry-related clashes.

## 5.3 Torsion angles [i](#)

### 5.3.1 Protein backbone [i](#)

In the following table, the Percentiles column shows the percent Ramachandran outliers of the chain as a percentile score with respect to all X-ray entries followed by that with respect to entries of similar resolution.

The Analysed column shows the number of residues for which the backbone conformation was analysed, and the total number of residues.

Mol	Chain	Analysed	Favoured	Allowed	Outliers	Percentiles	
1	A	234/260 (90%)	229 (98%)	5 (2%)	0	100	100
1	B	216/260 (83%)	208 (96%)	8 (4%)	0	100	100
2	C	6/8 (75%)	6 (100%)	0	0	100	100
2	D	6/8 (75%)	6 (100%)	0	0	100	100
All	All	462/536 (86%)	449 (97%)	13 (3%)	0	100	100

There are no Ramachandran outliers to report.

### 5.3.2 Protein sidechains [i](#)

In the following table, the Percentiles column shows the percent sidechain outliers of the chain as a percentile score with respect to all X-ray entries followed by that with respect to entries of similar resolution.

The Analysed column shows the number of residues for which the sidechain conformation was analysed, and the total number of residues.

Mol	Chain	Analysed	Rotameric	Outliers	Percentiles	
1	A	209/225 (93%)	203 (97%)	6 (3%)	42	51
1	B	196/225 (87%)	187 (95%)	9 (5%)	27	30
2	C	7/7 (100%)	7 (100%)	0	100	100
2	D	7/7 (100%)	6 (86%)	1 (14%)	3	2
All	All	419/464 (90%)	403 (96%)	16 (4%)	33	39

All (16) residues with a non-rotameric sidechain are listed below:

Mol	Chain	Res	Type
1	A	306	LEU
1	A	335	ARG

*Continued on next page...*

*Continued from previous page...*

Mol	Chain	Res	Type
1	A	338	SER
1	A	351	ASP
1	A	526	TYR
1	A	527	SER
1	B	309	SER
1	B	317	SER
1	B	345	LEU
1	B	348	ASN
1	B	354	LEU
1	B	422	VAL
1	B	464	SER
1	B	466	LEU
1	B	501	HIS
2	D	604	HIS

Sometimes sidechains can be flipped to improve hydrogen bonding and reduce clashes. All (1) such sidechains are listed below:

Mol	Chain	Res	Type
1	A	398	HIS

### 5.3.3 RNA [i](#)

There are no RNA molecules in this entry.

### 5.4 Non-standard residues in protein, DNA, RNA chains [i](#)

There are no non-standard protein/DNA/RNA residues in this entry.

### 5.5 Carbohydrates [i](#)

There are no monosaccharides in this entry.

### 5.6 Ligand geometry [i](#)

3 ligands are modelled in this entry.

In the following table, the Counts columns list the number of bonds (or angles) for which Mogul statistics could be retrieved, the number of bonds (or angles) that are observed in the model and the number of bonds (or angles) that are defined in the Chemical Component Dictionary. The

Link column lists molecule types, if any, to which the group is linked. The Z score for a bond length (or angle) is the number of standard deviations the observed value is removed from the expected value. A bond length (or angle) with  $|Z| > 2$  is considered an outlier worth inspection. RMSZ is the root-mean-square of all Z scores of the bond lengths (or angles).

Mol	Type	Chain	Res	Link	Bond lengths			Bond angles		
					Counts	RMSZ	# Z  > 2	Counts	RMSZ	# Z  > 2
5	SO4	B	602	-	4,4,4	0.36	0	6,6,6	0.19	0
3	PEG	A	601	-	6,6,6	0.45	0	5,5,5	0.30	0
4	IX0	B	601	-	44,47,47	4.39	13 (29%)	57,71,71	2.42	13 (22%)

In the following table, the Chirals column lists the number of chiral outliers, the number of chiral centers analysed, the number of these observed in the model and the number defined in the Chemical Component Dictionary. Similar counts are reported in the Torsion and Rings columns. '-' means no outliers of that kind were identified.

Mol	Type	Chain	Res	Link	Chirals	Torsions	Rings
3	PEG	A	601	-	-	1/4/4/4	-
4	IX0	B	601	-	-	7/35/61/61	0/6/5/5

All (13) bond length outliers are listed below:

Mol	Chain	Res	Type	Atoms	Z	Observed(Å)	Ideal(Å)
4	B	601	IX0	OAV-SAU	13.39	1.54	1.43
4	B	601	IX0	OAW-SAU	11.88	1.53	1.43
4	B	601	IX0	CAB-CAC	10.47	1.54	1.33
4	B	601	IX0	CAN-CAO	-9.96	1.39	1.50
4	B	601	IX0	CAK-CAO	-8.87	1.31	1.48
4	B	601	IX0	CBD-NAX	-7.84	1.33	1.44
4	B	601	IX0	CBK-CAP	-7.72	1.33	1.48
4	B	601	IX0	CAB-CAA	5.58	1.58	1.47
4	B	601	IX0	CAQ-CAP	-5.04	1.44	1.51
4	B	601	IX0	CAH-NAF	-4.33	1.32	1.41
4	B	601	IX0	SAU-NAX	-2.97	1.61	1.67
4	B	601	IX0	FBC-CAZ	-2.56	1.23	1.33
4	B	601	IX0	CAA-NAF	-2.37	1.31	1.35

All (13) bond angle outliers are listed below:

Mol	Chain	Res	Type	Atoms	Z	Observed(°)	Ideal(°)
4	B	601	IX0	OAV-SAU-OAV	-11.28	111.97	119.22
4	B	601	IX0	CAY-NAX-CBD	7.04	127.00	117.59
4	B	601	IX0	FBC-CAZ-CAY	-4.66	104.49	112.13
4	B	601	IX0	OAV-SAU-NAX	3.64	112.02	107.56

*Continued on next page...*

*Continued from previous page...*

Mol	Chain	Res	Type	Atoms	Z	Observed(°)	Ideal(°)
4	B	601	IX0	CAH-NAF-CAA	-3.46	123.03	128.26
4	B	601	IX0	CAQ-CAR-CAS	-3.44	97.57	100.61
4	B	601	IX0	CAJ-CAI-CAH	-3.11	116.70	120.30
4	B	601	IX0	OAT-CAQ-CAR	-3.09	98.55	104.64
4	B	601	IX0	CAL-CAK-CAO	-2.85	117.22	120.91
4	B	601	IX0	CAM-CAH-NAF	-2.80	110.99	120.40
4	B	601	IX0	CAI-CAH-NAF	2.26	128.01	120.40
4	B	601	IX0	CAM-CAL-CAK	-2.22	118.20	120.78
4	B	601	IX0	CAG-CAC-CAD	2.04	119.12	114.60

There are no chirality outliers.

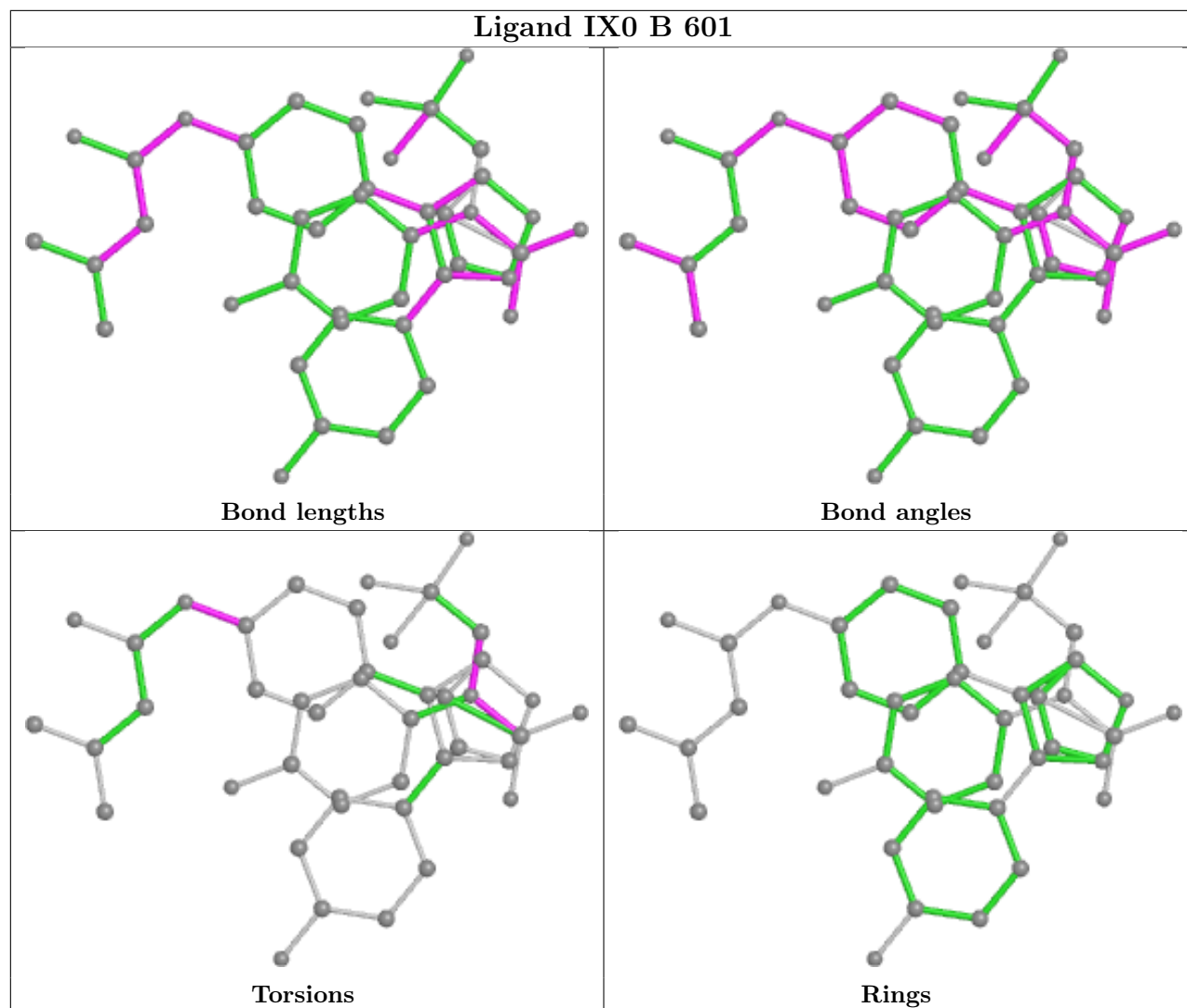
All (8) torsion outliers are listed below:

Mol	Chain	Res	Type	Atoms
4	B	601	IX0	CBD-NAX-SAU-CAS
4	B	601	IX0	CAY-NAX-SAU-OAW
4	B	601	IX0	CBD-NAX-SAU-OAW
4	B	601	IX0	CAZ-CAY-NAX-SAU
4	B	601	IX0	CAI-CAH-NAF-CAA
4	B	601	IX0	CAY-NAX-SAU-CAS
4	B	601	IX0	CAM-CAH-NAF-CAA
3	A	601	PEG	O2-C3-C4-O4

There are no ring outliers.

No monomer is involved in short contacts.

The following is a two-dimensional graphical depiction of Mogul quality analysis of bond lengths, bond angles, torsion angles, and ring geometry for all instances of the Ligand of Interest. In addition, ligands with molecular weight > 250 and outliers as shown on the validation Tables will also be included. For torsion angles, if less than 5% of the Mogul distribution of torsion angles is within 10 degrees of the torsion angle in question, then that torsion angle is considered an outlier. Any bond that is central to one or more torsion angles identified as an outlier by Mogul will be highlighted in the graph. For rings, the root-mean-square deviation (RMSD) between the ring in question and similar rings identified by Mogul is calculated over all ring torsion angles. If the average RMSD is greater than 60 degrees and the minimal RMSD between the ring in question and any Mogul-identified rings is also greater than 60 degrees, then that ring is considered an outlier. The outliers are highlighted in purple. The color gray indicates Mogul did not find sufficient equivalents in the CSD to analyse the geometry.



## 5.7 Other polymers [i](#)

There are no such residues in this entry.

## 5.8 Polymer linkage issues [i](#)

There are no chain breaks in this entry.

## 6 Fit of model and data

### 6.1 Protein, DNA and RNA chains

In the following table, the column labelled ‘#RSRZ > 2’ contains the number (and percentage) of RSRZ outliers, followed by percent RSRZ outliers for the chain as percentile scores relative to all X-ray entries and entries of similar resolution. The OWAB column contains the minimum, median, 95<sup>th</sup> percentile and maximum values of the occupancy-weighted average B-factor per residue. The column labelled ‘Q < 0.9’ lists the number of (and percentage) of residues with an average occupancy less than 0.9.

Mol	Chain	Analysed	<RSRZ>	#RSRZ>2	OWAB(Å <sup>2</sup> )	Q<0.9
1	A	237/260 (91%)	0.08	9 (3%) 40 43	24, 41, 80, 102	0
1	B	220/260 (84%)	0.08	11 (5%) 28 31	27, 43, 78, 95	0
2	C	8/8 (100%)	-0.50	0 100 100	36, 40, 50, 54	0
2	D	8/8 (100%)	2.18	5 (62%) 0 0	70, 82, 102, 105	0
All	All	473/536 (88%)	0.10	25 (5%) 26 29	24, 43, 81, 105	0

All (25) RSRZ outliers are listed below:

Mol	Chain	Res	Type	RSRZ
2	D	604	HIS	4.4
2	D	605	ARG	4.2
1	A	511	LEU	3.5
1	B	339	GLU	3.4
1	A	510	ILE	3.2
1	B	509	LEU	3.2
1	B	340	ALA	3.1
1	B	338	SER	2.9
1	A	514	ILE	2.9
2	D	608	GLN	2.9
2	D	602	ILE	2.8
1	A	548	ARG	2.8
1	B	417	SER	2.7
1	B	511	LEU	2.7
1	A	509	LEU	2.7
1	A	419	GLU	2.7
1	A	335	ARG	2.5
2	D	601	ALA	2.5
1	B	337	PHE	2.5
1	A	526	TYR	2.4
1	B	418	VAL	2.4

*Continued on next page...*



*Continued from previous page...*

Mol	Chain	Res	Type	RSRZ
1	A	546	ALA	2.3
1	B	336	PRO	2.3
1	B	334	THR	2.2
1	B	524	HIS	2.0

## 6.2 Non-standard residues in protein, DNA, RNA chains [i](#)

There are no non-standard protein/DNA/RNA residues in this entry.

## 6.3 Carbohydrates [i](#)

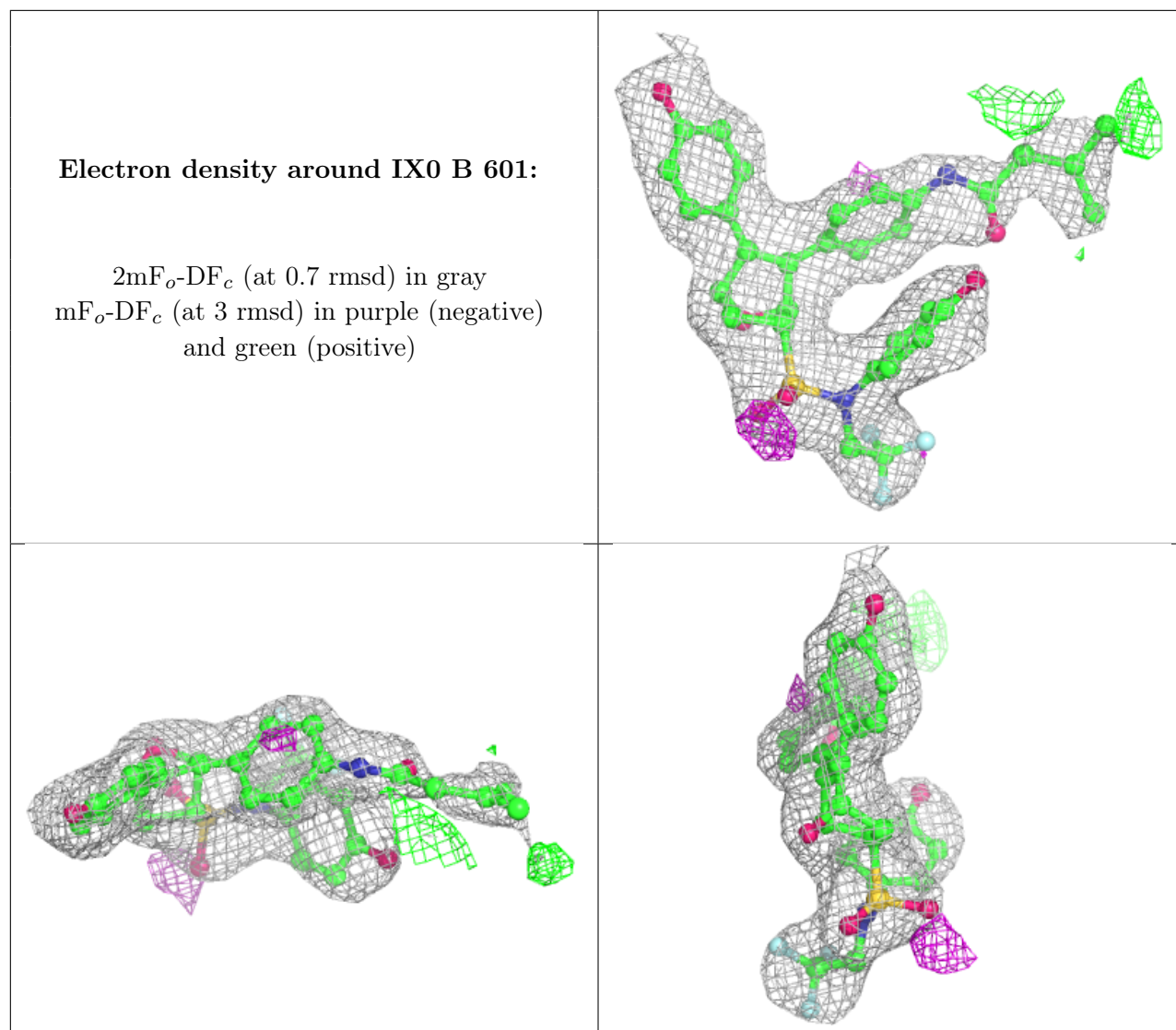
There are no monosaccharides in this entry.

## 6.4 Ligands [i](#)

In the following table, the Atoms column lists the number of modelled atoms in the group and the number defined in the chemical component dictionary. The B-factors column lists the minimum, median, 95<sup>th</sup> percentile and maximum values of B factors of atoms in the group. The column labelled 'Q < 0.9' lists the number of atoms with occupancy less than 0.9.

Mol	Type	Chain	Res	Atoms	RSCC	RSR	B-factors(Å <sup>2</sup> )	Q<0.9
3	PEG	A	601	7/7	0.78	0.34	47,57,62,65	0
5	SO4	B	602	5/5	0.90	0.26	71,77,99,100	0
4	IX0	B	601	43/43	0.92	0.17	35,56,75,94	0

The following is a graphical depiction of the model fit to experimental electron density of all instances of the Ligand of Interest. In addition, ligands with molecular weight > 250 and outliers as shown on the geometry validation Tables will also be included. Each fit is shown from different orientation to approximate a three-dimensional view.



## 6.5 Other polymers [i](#)

There are no such residues in this entry.