



Full wwPDB EM Validation Report ⓘ

Sep 23, 2024 – 02:18 PM JST

PDB ID : 8YMM
EMDB ID : EMD-39399
Title : OSCA1.1-F516A open
Authors : Zhang, M.F.
Deposited on : 2024-03-09
Resolution : 2.80 Å(reported)

This is a Full wwPDB EM Validation Report for a publicly released PDB entry.

We welcome your comments at validation@mail.wwpdb.org

A user guide is available at

<https://www.wwpdb.org/validation/2017/EMValidationReportHelp>

with specific help available everywhere you see the ⓘ symbol.

The types of validation reports are described at

<http://www.wwpdb.org/validation/2017/FAQs#types>.

The following versions of software and data (see [references ⓘ](#)) were used in the production of this report:

EMDB validation analysis : 0.0.1.dev112
Mogul : 1.8.5 (274361), CSD as541be (2020)
MolProbity : 4.02b-467
buster-report : 1.1.7 (2018)
Percentile statistics : 20231227.v01 (using entries in the PDB archive December 27th 2023)
MapQ : 1.9.13
Ideal geometry (proteins) : Engh & Huber (2001)
Ideal geometry (DNA, RNA) : Parkinson et al. (1996)
Validation Pipeline (wwPDB-VP) : 2.38.2

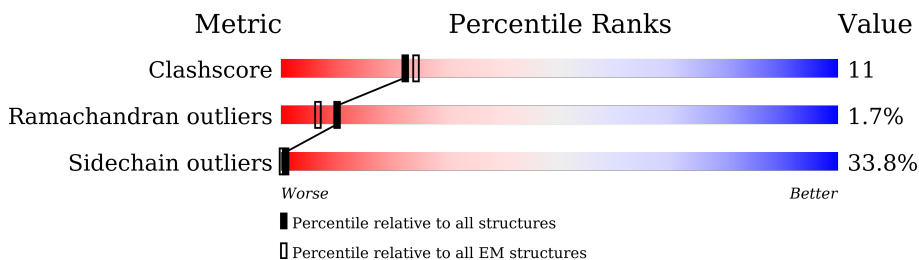
1 Overall quality at a glance

The following experimental techniques were used to determine the structure:

ELECTRON MICROSCOPY

The reported resolution of this entry is 2.80 Å.

Percentile scores (ranging between 0-100) for global validation metrics of the entry are shown in the following graphic. The table shows the number of entries on which the scores are based.



Metric	Whole archive (#Entries)	EM structures (#Entries)
Clashscore	210492	15764
Ramachandran outliers	207382	16835
Sidechain outliers	206894	16415

The table below summarises the geometric issues observed across the polymeric chains and their fit to the map. The red, orange, yellow and green segments of the bar indicate the fraction of residues that contain outliers for ≥ 3 , 2, 1 and 0 types of geometric quality criteria respectively. A grey segment represents the fraction of residues that are not modelled. The numeric value for each fraction is indicated below the corresponding segment, with a dot representing fractions $\leq 5\%$. The upper red bar (where present) indicates the fraction of residues that have poor fit to the EM map (all-atom inclusion $< 40\%$). The numeric value is given above the bar.

Mol	Chain	Length	Quality of chain
1	A	772	
1	B	772	

2 Entry composition [i](#)

There are 2 unique types of molecules in this entry. The entry contains 10710 atoms, of which 0 are hydrogens and 0 are deuteriums.

In the tables below, the AltConf column contains the number of residues with at least one atom in alternate conformation and the Trace column contains the number of residues modelled with at most 2 atoms.

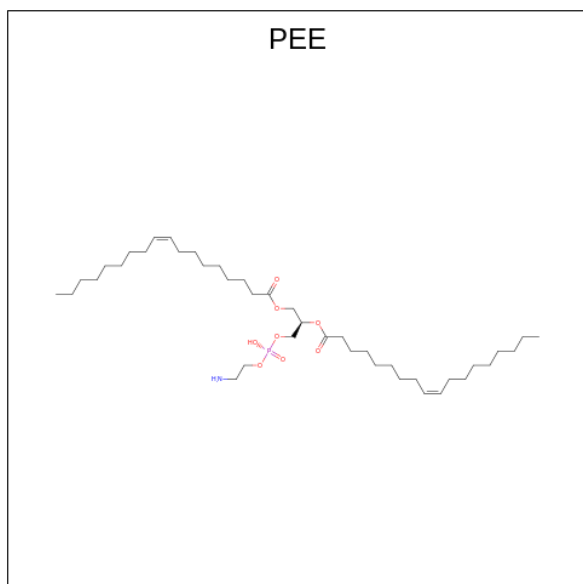
- Molecule 1 is a protein called Protein OSCA1.

Mol	Chain	Residues	Atoms					AltConf	Trace
			Total	C	N	O	S		
1	A	664	5346	3526	879	915	26	0	0
1	B	664	5346	3526	879	915	26	0	0

There are 2 discrepancies between the modelled and reference sequences:

Chain	Residue	Modelled	Actual	Comment	Reference
A	516	ALA	PHE	engineered mutation	UNP Q9XEA1
B	516	ALA	PHE	engineered mutation	UNP Q9XEA1

- Molecule 2 is 1,2-dioleoyl-sn-glycero-3-phosphoethanolamine (three-letter code: PEE) (formula: $C_{41}H_{78}NO_8P$) (labeled as "Ligand of Interest" by depositor).



Mol	Chain	Residues	Atoms	AltConf
2	A	1	Total C 9 9	0

Continued on next page...

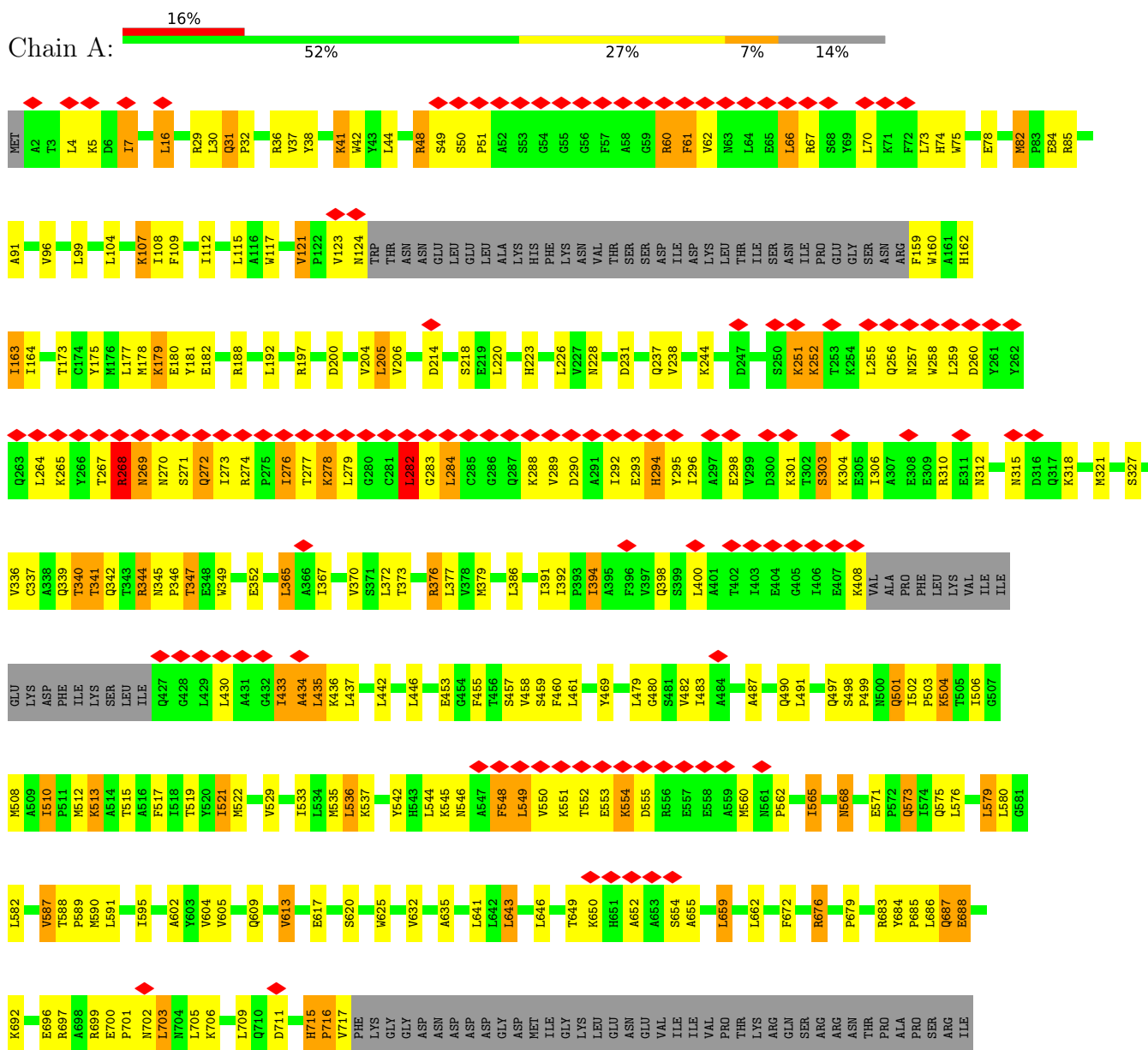
Continued from previous page...

Mol	Chain	Residues	Atoms		AltConf
2	B	1	Total	C	0
			9	9	

3 Residue-property plots [i](#)

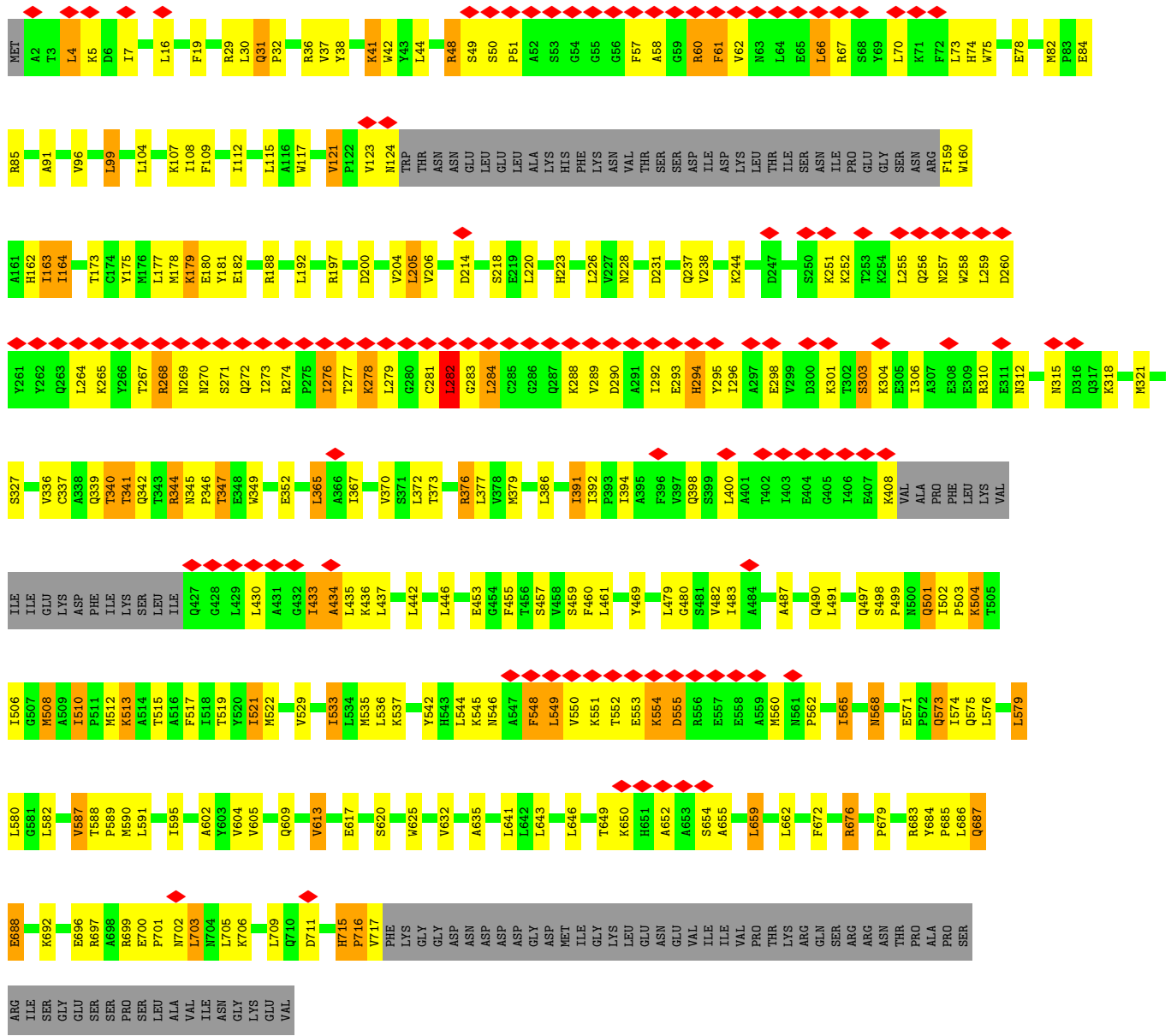
These plots are drawn for all protein, RNA, DNA and oligosaccharide chains in the entry. The first graphic for a chain summarises the proportions of the various outlier classes displayed in the second graphic. The second graphic shows the sequence view annotated by issues in geometry and atom inclusion in map density. Residues are color-coded according to the number of geometric quality criteria for which they contain at least one outlier: green = 0, yellow = 1, orange = 2 and red = 3 or more. A red diamond above a residue indicates a poor fit to the EM map for this residue (all-atom inclusion < 40%). Stretches of 2 or more consecutive residues without any outlier are shown as a green connector. Residues present in the sample, but not in the model, are shown in grey.

• Molecule 1: Protein OSCA1



SER	GLY
GLU	SER
SER	PRO
SER	LEU
ALA	VAL
ILE	ASN
GLY	LYS
GLU	VAL

Molecule 1: Protein OSCA1



4 Experimental information

Property	Value	Source
EM reconstruction method	SINGLE PARTICLE	Depositor
Imposed symmetry	POINT, Not provided	
Number of particles used	54900	Depositor
Resolution determination method	FSC 0.143 CUT-OFF	Depositor
CTF correction method	NONE	Depositor
Microscope	FEI TITAN KRIOS	Depositor
Voltage (kV)	300	Depositor
Electron dose ($e^-/\text{\AA}^2$)	40	Depositor
Minimum defocus (nm)	1200	Depositor
Maximum defocus (nm)	2000	Depositor
Magnification	Not provided	
Image detector	FEI FALCON IV (4k x 4k)	Depositor
Maximum map value	0.269	Depositor
Minimum map value	-0.156	Depositor
Average map value	0.000	Depositor
Map value standard deviation	0.007	Depositor
Recommended contour level	0.03	Depositor
Map size (\AA)	252.0, 252.0, 252.0	wwPDB
Map dimensions	720, 720, 720	wwPDB
Map angles ($^\circ$)	90.0, 90.0, 90.0	wwPDB
Pixel spacing (\AA)	0.35, 0.35, 0.35	Depositor

5 Model quality [i](#)

5.1 Standard geometry [i](#)

Bond lengths and bond angles in the following residue types are not validated in this section: PEE

The Z score for a bond length (or angle) is the number of standard deviations the observed value is removed from the expected value. A bond length (or angle) with $|Z| > 5$ is considered an outlier worth inspection. RMSZ is the root-mean-square of all Z scores of the bond lengths (or angles).

Mol	Chain	Bond lengths		Bond angles	
		RMSZ	# Z >5	RMSZ	# Z >5
1	A	0.38	0/5493	0.58	1/7469 (0.0%)
1	B	0.38	0/5493	0.58	1/7469 (0.0%)
All	All	0.38	0/10986	0.58	2/14938 (0.0%)

There are no bond length outliers.

All (2) bond angle outliers are listed below:

Mol	Chain	Res	Type	Atoms	Z	Observed(°)	Ideal(°)
1	A	703	LEU	CA-CB-CG	6.45	130.13	115.30
1	B	703	LEU	CA-CB-CG	6.45	130.13	115.30

There are no chirality outliers.

There are no planarity outliers.

5.2 Too-close contacts [i](#)

In the following table, the Non-H and H(model) columns list the number of non-hydrogen atoms and hydrogen atoms in the chain respectively. The H(added) column lists the number of hydrogen atoms added and optimized by MolProbity. The Clashes column lists the number of clashes within the asymmetric unit, whereas Symm-Clashes lists symmetry-related clashes.

Mol	Chain	Non-H	H(model)	H(added)	Clashes	Symm-Clashes
1	A	5346	0	5419	168	0
1	B	5346	0	5419	164	0
2	A	9	0	17	0	0
2	B	9	0	17	0	0
All	All	10710	0	10872	241	0

The all-atom clashscore is defined as the number of clashes found per 1000 atoms (including

hydrogen atoms). The all-atom clashscore for this structure is 11.

All (241) close contacts within the same asymmetric unit are listed below, sorted by their clash magnitude.

Atom-1	Atom-2	Interatomic distance (Å)	Clash overlap (Å)
1:A:345:ASN:OD1	1:B:676:ARG:NH1	1.77	1.18
1:A:676:ARG:NH1	1:B:345:ASN:OD1	1.77	1.18
1:A:347:THR:HG21	1:B:676:ARG:HG2	1.17	1.15
1:A:679:PRO:HG2	1:B:346:PRO:HG3	1.28	1.14
1:A:676:ARG:HG2	1:B:347:THR:HG21	1.17	1.14
1:A:683:ARG:HH11	1:B:341:THR:HG22	1.15	1.10
1:A:341:THR:HG22	1:B:683:ARG:HH11	1.15	1.09
1:A:346:PRO:HG3	1:B:679:PRO:HG2	1.28	1.09
1:A:676:ARG:HG2	1:B:347:THR:CG2	1.82	1.09
1:A:347:THR:CG2	1:B:676:ARG:HG2	1.82	1.08
1:A:686:LEU:CD2	1:B:340:THR:HG21	1.88	1.04
1:A:340:THR:HG21	1:B:686:LEU:CD2	1.88	1.03
1:A:345:ASN:OD1	1:B:676:ARG:CZ	2.07	1.02
1:A:676:ARG:CZ	1:B:345:ASN:OD1	2.07	1.01
1:A:340:THR:CG2	1:B:686:LEU:HD22	1.91	1.00
1:A:686:LEU:HD22	1:B:340:THR:CG2	1.91	1.00
1:A:341:THR:HG22	1:B:683:ARG:NH1	1.80	0.97
1:A:346:PRO:CG	1:B:679:PRO:HG2	1.95	0.95
1:A:679:PRO:HG2	1:B:346:PRO:CG	1.95	0.95
1:A:683:ARG:NH1	1:B:341:THR:HG22	1.80	0.94
1:A:686:LEU:HD22	1:B:340:THR:HG21	1.48	0.93
1:A:676:ARG:CG	1:B:347:THR:HG21	2.01	0.89
1:A:347:THR:HG21	1:B:676:ARG:CG	2.01	0.88
1:A:340:THR:HG21	1:B:686:LEU:HD22	1.48	0.87
1:A:686:LEU:HD21	1:B:340:THR:HG21	1.59	0.82
1:A:340:THR:HG21	1:B:686:LEU:HD21	1.59	0.81
1:A:497:GLN:O	1:B:499:PRO:HD3	1.82	0.80
1:A:346:PRO:HG3	1:B:679:PRO:CG	2.11	0.79
1:A:679:PRO:CG	1:B:346:PRO:HG3	2.11	0.79
1:A:499:PRO:HD3	1:B:497:GLN:O	1.82	0.78
1:A:497:GLN:O	1:B:499:PRO:CD	2.35	0.74
1:A:679:PRO:HG2	1:B:346:PRO:CB	2.17	0.74
1:A:679:PRO:CG	1:B:346:PRO:CB	2.66	0.74
1:A:676:ARG:O	1:B:346:PRO:CD	2.36	0.74
1:A:499:PRO:CD	1:B:497:GLN:O	2.35	0.74
1:A:346:PRO:CB	1:B:679:PRO:HG2	2.17	0.73
1:A:346:PRO:CD	1:B:676:ARG:O	2.36	0.73
1:A:346:PRO:CB	1:B:679:PRO:CG	2.66	0.73

Continued on next page...

Continued from previous page...

Atom-1	Atom-2	Interatomic distance (Å)	Clash overlap (Å)
1:A:340:THR:HG23	1:B:686:LEU:HD22	1.70	0.72
1:A:340:THR:OG1	1:B:339:GLN:HG3	1.90	0.72
1:A:339:GLN:HG3	1:B:340:THR:OG1	1.90	0.71
1:A:686:LEU:HD22	1:B:340:THR:HG23	1.70	0.71
1:A:683:ARG:HH11	1:B:341:THR:CG2	2.00	0.70
1:A:676:ARG:O	1:B:346:PRO:HD2	1.91	0.70
1:A:679:PRO:CG	1:B:346:PRO:CG	2.69	0.70
1:A:259:LEU:HB2	1:A:294:HIS:H	1.56	0.69
1:B:274:ARG:H	1:B:284:LEU:H	1.40	0.69
1:A:346:PRO:HD2	1:B:676:ARG:O	1.91	0.69
1:B:259:LEU:HB2	1:B:294:HIS:H	1.56	0.69
1:A:346:PRO:CG	1:B:679:PRO:CG	2.69	0.69
1:A:676:ARG:O	1:B:346:PRO:CG	2.41	0.69
1:A:346:PRO:CG	1:B:676:ARG:O	2.41	0.68
1:A:341:THR:HG23	1:B:339:GLN:HE22	1.59	0.68
1:A:274:ARG:H	1:A:284:LEU:H	1.40	0.68
1:B:502:ILE:HB	1:B:503:PRO:CD	2.24	0.67
1:A:341:THR:CG2	1:B:683:ARG:HH11	2.00	0.67
1:A:502:ILE:HB	1:A:503:PRO:CD	2.24	0.66
1:A:257:ASN:HA	1:A:260:ASP:HB2	1.78	0.66
1:A:339:GLN:HE22	1:B:341:THR:HG23	1.59	0.66
1:B:257:ASN:HA	1:B:260:ASP:HB2	1.78	0.66
1:A:339:GLN:NE2	1:B:341:THR:HG23	2.13	0.63
1:A:345:ASN:CG	1:B:676:ARG:NH1	2.52	0.63
1:A:341:THR:HG23	1:B:339:GLN:NE2	2.13	0.62
1:A:676:ARG:NH1	1:B:345:ASN:CG	2.52	0.61
1:A:339:GLN:O	1:B:339:GLN:O	2.18	0.61
1:A:41:LYS:HE3	1:A:91:ALA:HA	1.82	0.60
1:A:109:PHE:HA	1:A:112:ILE:HG12	1.83	0.60
1:A:42:TRP:HB3	1:A:48:ARG:HB2	1.84	0.60
1:B:41:LYS:HE3	1:B:91:ALA:HA	1.82	0.60
1:B:109:PHE:HA	1:B:112:ILE:HG12	1.83	0.60
1:A:228:ASN:HD21	1:B:687:GLN:CA	2.14	0.59
1:A:339:GLN:HE21	1:B:341:THR:H	1.49	0.59
1:B:42:TRP:HB3	1:B:48:ARG:HB2	1.84	0.59
1:A:687:GLN:CA	1:B:228:ASN:HD21	2.14	0.59
1:A:687:GLN:CB	1:B:228:ASN:HD21	2.16	0.59
1:A:341:THR:H	1:B:339:GLN:HE21	1.49	0.58
1:A:228:ASN:HD21	1:B:687:GLN:CB	2.16	0.58
1:A:679:PRO:HG3	1:B:346:PRO:CB	2.35	0.56
1:B:519:THR:HA	1:B:522:MET:HE2	1.88	0.56

Continued on next page...

Continued from previous page...

Atom-1	Atom-2	Interatomic distance (Å)	Clash overlap (Å)
1:A:346:PRO:CB	1:B:679:PRO:HG3	2.35	0.56
1:A:519:THR:HA	1:A:522:MET:HE2	1.88	0.56
1:A:497:GLN:O	1:B:499:PRO:HD2	2.07	0.55
1:A:340:THR:CG2	1:B:686:LEU:CD2	2.62	0.55
1:B:117:TRP:HA	1:B:121:VAL:HG13	1.88	0.55
1:A:117:TRP:HA	1:A:121:VAL:HG13	1.88	0.55
1:A:339:GLN:CG	1:B:340:THR:OG1	2.55	0.54
1:A:346:PRO:HB2	1:B:679:PRO:HG3	1.90	0.54
1:B:205:LEU:HD11	1:B:365:LEU:HD11	1.90	0.54
1:A:340:THR:OG1	1:B:339:GLN:CG	2.55	0.54
1:A:679:PRO:HG3	1:B:346:PRO:HB2	1.90	0.54
1:A:205:LEU:HD11	1:A:365:LEU:HD11	1.90	0.53
1:A:228:ASN:HD21	1:B:687:GLN:HA	1.73	0.53
1:B:502:ILE:CB	1:B:503:PRO:CD	2.87	0.53
1:A:499:PRO:HD2	1:B:497:GLN:O	2.07	0.52
1:A:502:ILE:CB	1:A:503:PRO:CD	2.87	0.52
1:A:228:ASN:ND2	1:B:687:GLN:HA	2.24	0.52
1:B:562:PRO:HG3	1:B:613:VAL:HG12	1.92	0.52
1:A:687:GLN:HA	1:B:228:ASN:HD21	1.73	0.51
1:A:687:GLN:HA	1:B:228:ASN:ND2	2.24	0.51
1:A:342:GLN:O	1:B:687:GLN:HB2	2.11	0.50
1:A:347:THR:CG2	1:B:676:ARG:HA	2.42	0.50
1:A:562:PRO:HG3	1:A:613:VAL:HG12	1.92	0.50
1:A:602:ALA:HA	1:A:605:VAL:HG22	1.93	0.50
1:B:715:HIS:HB3	1:B:716:PRO:HD3	1.94	0.50
1:A:715:HIS:HB3	1:A:716:PRO:HD3	1.94	0.50
1:A:206:VAL:HG21	1:A:349:TRP:HE3	1.77	0.50
1:A:479:LEU:HA	1:A:482:VAL:HG22	1.94	0.50
1:A:609:GLN:HA	1:A:613:VAL:HG23	1.94	0.49
1:B:602:ALA:HA	1:B:605:VAL:HG22	1.93	0.49
1:A:687:GLN:HB2	1:B:342:GLN:O	2.11	0.49
1:A:346:PRO:HB3	1:B:679:PRO:CG	2.42	0.49
1:B:479:LEU:HA	1:B:482:VAL:HG22	1.94	0.49
1:A:346:PRO:HB3	1:B:679:PRO:HG2	1.93	0.49
1:A:676:ARG:HA	1:B:347:THR:CG2	2.42	0.49
1:A:398:GLN:HE21	1:A:434:ALA:HB2	1.77	0.49
1:B:206:VAL:HG21	1:B:349:TRP:HE3	1.77	0.49
1:A:341:THR:CG2	1:B:339:GLN:NE2	2.76	0.48
1:B:609:GLN:HA	1:B:613:VAL:HG23	1.94	0.48
1:A:676:ARG:HA	1:B:347:THR:HG22	1.94	0.48
1:B:502:ILE:HB	1:B:503:PRO:HD2	1.95	0.48

Continued on next page...

Continued from previous page...

Atom-1	Atom-2	Interatomic distance (Å)	Clash overlap (Å)
1:A:347:THR:HG22	1:B:676:ARG:HA	1.94	0.48
1:A:75:TRP:HH2	1:A:605:VAL:HG12	1.79	0.48
1:A:575:GLN:HE22	1:A:632:VAL:HG22	1.78	0.48
1:B:502:ILE:HB	1:B:503:PRO:HD3	1.94	0.48
1:A:339:GLN:NE2	1:B:341:THR:CG2	2.76	0.47
1:A:529:VAL:HB	1:A:605:VAL:HG21	1.96	0.47
1:A:679:PRO:HG2	1:B:346:PRO:HB3	1.93	0.47
1:A:548:PHE:HB3	1:A:549:LEU:H	1.56	0.47
1:B:398:GLN:HE21	1:B:434:ALA:HB2	1.78	0.47
1:B:529:VAL:HB	1:B:605:VAL:HG21	1.96	0.47
1:B:575:GLN:HE22	1:B:632:VAL:HG22	1.78	0.47
1:B:66:LEU:HD22	1:B:66:LEU:HA	1.73	0.47
1:B:365:LEU:HD13	1:B:365:LEU:HA	1.66	0.47
1:B:75:TRP:HH2	1:B:605:VAL:HG12	1.79	0.47
1:A:502:ILE:HB	1:A:503:PRO:HD2	1.95	0.46
1:A:31:GLN:H	1:A:31:GLN:HG2	1.58	0.46
1:B:565:ILE:H	1:B:565:ILE:HG13	1.36	0.46
1:A:502:ILE:HB	1:A:503:PRO:HD3	1.94	0.46
1:A:336:VAL:HG13	1:B:336:VAL:HG13	1.97	0.46
1:A:270:ASN:HB3	1:A:271:SER:H	1.53	0.46
1:A:679:PRO:CG	1:B:346:PRO:HB3	2.42	0.46
1:A:175:TYR:CE1	1:A:179:LYS:HD3	2.51	0.46
1:A:278:LYS:HZ1	1:A:282:LEU:HD23	1.81	0.46
1:A:344:ARG:HE	1:A:344:ARG:HB2	1.66	0.45
1:B:121:VAL:HG12	1:B:589:PRO:HG2	1.99	0.45
1:B:175:TYR:CE1	1:B:179:LYS:HD3	2.51	0.45
1:B:508:MET:HE3	1:B:508:MET:HB3	1.66	0.45
1:B:4:LEU:H	1:B:4:LEU:HG	1.48	0.45
1:A:304:LYS:HA	1:A:304:LYS:HD3	1.75	0.45
1:A:565:ILE:H	1:A:565:ILE:HG13	1.36	0.45
1:B:32:PRO:HD2	1:B:60:ARG:HG2	1.99	0.45
1:B:568:ASN:H	1:B:568:ASN:HD22	1.64	0.45
1:A:32:PRO:HD2	1:A:60:ARG:HG2	1.99	0.45
1:B:255:LEU:HD22	1:B:294:HIS:ND1	2.32	0.45
1:A:251:LYS:HB3	1:A:251:LYS:HE3	1.51	0.45
1:B:270:ASN:HB3	1:B:271:SER:H	1.53	0.45
1:A:121:VAL:HG12	1:A:589:PRO:HG2	1.99	0.44
1:B:579:LEU:HD23	1:B:635:ALA:HA	1.99	0.44
1:A:435:LEU:HD23	1:A:435:LEU:HA	1.73	0.44
1:B:57:PHE:HB3	1:B:58:ALA:H	1.63	0.44
1:B:391:ILE:H	1:B:391:ILE:HG12	1.33	0.44

Continued on next page...

Continued from previous page...

Atom-1	Atom-2	Interatomic distance (Å)	Clash overlap (Å)
1:B:533:ILE:HD12	1:B:533:ILE:HA	1.71	0.44
1:A:344:ARG:H	1:A:344:ARG:HG3	1.36	0.44
1:B:31:GLN:H	1:B:31:GLN:HG2	1.58	0.44
1:B:513:LYS:HZ2	1:B:513:LYS:HG2	1.51	0.44
1:B:282:LEU:HB3	1:B:283:GLY:H	1.66	0.44
1:A:163:ILE:HG21	1:A:655:ALA:HB1	2.00	0.44
1:A:255:LEU:HD22	1:A:294:HIS:ND1	2.32	0.44
1:A:568:ASN:HD22	1:A:568:ASN:H	1.64	0.44
1:B:482:VAL:HG23	1:B:483:ILE:HG12	2.00	0.44
1:A:276:ILE:HB	1:A:278:LYS:HZ2	1.82	0.44
1:B:163:ILE:HG21	1:B:655:ALA:HB1	2.00	0.44
1:A:579:LEU:HD23	1:A:635:ALA:HA	1.99	0.44
1:A:659:LEU:HD22	1:A:659:LEU:HA	1.79	0.44
1:A:687:GLN:CA	1:B:228:ASN:ND2	2.79	0.43
1:B:273:ILE:HA	1:B:284:LEU:HD13	2.00	0.43
1:A:643:LEU:HD13	1:A:643:LEU:HA	1.90	0.43
1:B:521:ILE:H	1:B:521:ILE:HG12	1.58	0.43
1:A:513:LYS:HZ2	1:A:513:LYS:HG2	1.53	0.43
1:B:304:LYS:HA	1:B:304:LYS:HD3	1.75	0.43
1:A:273:ILE:HA	1:A:284:LEU:HD13	2.00	0.43
1:B:344:ARG:H	1:B:344:ARG:HG3	1.36	0.43
1:B:554:LYS:HB3	1:B:555:ASP:H	1.66	0.43
1:B:659:LEU:HD22	1:B:659:LEU:HA	1.79	0.43
1:A:252:LYS:HB3	1:A:252:LYS:HE2	1.21	0.42
1:B:480:GLY:HA2	1:B:490:GLN:HE22	1.84	0.42
1:A:501:GLN:HA	1:A:504:LYS:HB2	2.01	0.42
1:B:501:GLN:HA	1:B:504:LYS:HB2	2.01	0.42
1:A:82:MET:HE3	1:A:82:MET:HB3	1.84	0.42
1:A:303:SER:HA	1:A:306:ILE:HD12	2.02	0.42
1:B:548:PHE:HB3	1:B:549:LEU:H	1.56	0.42
1:A:365:LEU:HD13	1:A:365:LEU:HA	1.66	0.42
1:A:482:VAL:HG23	1:A:483:ILE:HG12	2.00	0.42
1:B:282:LEU:HD13	1:B:282:LEU:HA	1.77	0.42
1:B:303:SER:HA	1:B:306:ILE:HD12	2.02	0.42
1:A:662:LEU:HD12	1:A:662:LEU:HA	1.79	0.42
1:B:99:LEU:HD12	1:B:99:LEU:HA	1.88	0.42
1:A:228:ASN:ND2	1:B:687:GLN:CA	2.79	0.42
1:B:284:LEU:HD12	1:B:284:LEU:HA	1.88	0.42
1:B:662:LEU:HD12	1:B:662:LEU:HA	1.79	0.42
1:B:276:ILE:HB	1:B:278:LYS:HZ2	1.85	0.42
1:A:60:ARG:HB2	1:A:61:PHE:H	1.51	0.41

Continued on next page...

Continued from previous page...

Atom-1	Atom-2	Interatomic distance (Å)	Clash overlap (Å)
1:A:204:VAL:HG11	1:A:337:CYS:HB3	2.02	0.41
1:A:536:LEU:HD12	1:A:536:LEU:HA	1.69	0.41
1:B:60:ARG:HB2	1:B:61:PHE:H	1.51	0.41
1:B:573:GLN:HE21	1:B:573:GLN:HB3	1.57	0.41
1:A:107:LYS:HE3	1:A:107:LYS:HB2	1.71	0.41
1:B:19:PHE:HD1	1:B:19:PHE:HA	1.75	0.41
1:B:204:VAL:HG11	1:B:337:CYS:HB3	2.02	0.41
1:A:480:GLY:HA2	1:A:490:GLN:HE22	1.84	0.41
1:A:521:ILE:H	1:A:521:ILE:HG12	1.58	0.41
1:A:685:PRO:HB2	1:A:688:GLU:HB2	2.03	0.41
1:B:70:LEU:HD23	1:B:70:LEU:HA	1.82	0.41
1:A:70:LEU:HD23	1:A:70:LEU:HA	1.82	0.41
1:A:394:ILE:HA	1:A:394:ILE:HD12	1.75	0.41
1:A:268:ARG:HB2	1:A:269:ASN:H	1.57	0.41
1:A:272:GLN:H	1:A:272:GLN:HG2	1.39	0.41
1:B:568:ASN:HD22	1:B:568:ASN:N	2.19	0.41
1:A:549:LEU:H	1:A:549:LEU:HG	1.47	0.41
1:B:281:CYS:HB3	1:B:282:LEU:H	1.67	0.41
1:A:376:ARG:HA	1:A:453:GLU:HG2	2.03	0.41
1:A:458:VAL:HA	1:A:461:LEU:HD12	2.03	0.41
1:A:482:VAL:HA	1:A:513:LYS:HD2	2.03	0.41
1:B:31:GLN:HA	1:B:32:PRO:HD2	1.89	0.41
1:B:455:PHE:HB2	1:B:461:LEU:HD23	2.03	0.41
1:B:574:ILE:H	1:B:574:ILE:HG13	1.71	0.41
1:A:554:LYS:HE2	1:A:554:LYS:HB3	1.89	0.41
1:A:282:LEU:HB3	1:A:283:GLY:H	1.66	0.40
1:A:573:GLN:HE21	1:A:573:GLN:HB3	1.57	0.40
1:A:455:PHE:HB2	1:A:461:LEU:HD23	2.03	0.40
1:B:685:PRO:HB2	1:B:688:GLU:HB2	2.03	0.40
1:A:510:ILE:HD12	1:A:587:VAL:HG21	2.03	0.40
1:A:568:ASN:HD22	1:A:568:ASN:N	2.19	0.40
1:B:376:ARG:HA	1:B:453:GLU:HG2	2.03	0.40
1:A:7:ILE:HD13	1:A:7:ILE:HA	1.82	0.40
1:A:16:LEU:HD22	1:A:16:LEU:HA	1.68	0.40
1:A:66:LEU:HD22	1:A:66:LEU:HA	1.73	0.40
1:B:108:ILE:HD13	1:B:173:THR:HG23	2.04	0.40
1:B:164:ILE:HA	1:B:164:ILE:HD13	1.71	0.40
1:B:510:ILE:HD12	1:B:587:VAL:HG21	2.03	0.40
1:A:108:ILE:HD13	1:A:173:THR:HG23	2.04	0.40

There are no symmetry-related clashes.

5.3 Torsion angles [i](#)

5.3.1 Protein backbone [i](#)

In the following table, the Percentiles column shows the percent Ramachandran outliers of the chain as a percentile score with respect to all PDB entries followed by that with respect to all EM entries.

The Analysed column shows the number of residues for which the backbone conformation was analysed, and the total number of residues.

Mol	Chain	Analysed	Favoured	Allowed	Outliers	Percentiles	
1	A	658/772 (85%)	583 (89%)	64 (10%)	11 (2%)	7	26
1	B	658/772 (85%)	583 (89%)	64 (10%)	11 (2%)	7	26
All	All	1316/1544 (85%)	1166 (89%)	128 (10%)	22 (2%)	10	26

All (22) Ramachandran outliers are listed below:

Mol	Chain	Res	Type
1	A	51	PRO
1	A	296	ILE
1	A	434	ALA
1	B	51	PRO
1	B	296	ILE
1	B	434	ALA
1	A	487	ALA
1	A	587	VAL
1	A	715	HIS
1	B	487	ALA
1	B	587	VAL
1	B	715	HIS
1	A	433	ILE
1	B	433	ILE
1	A	652	ALA
1	A	716	PRO
1	B	652	ALA
1	B	716	PRO
1	A	268	ARG
1	A	282	LEU
1	B	268	ARG
1	B	282	LEU

5.3.2 Protein sidechains [i](#)

In the following table, the Percentiles column shows the percent sidechain outliers of the chain as a percentile score with respect to all PDB entries followed by that with respect to all EM entries.

The Analysed column shows the number of residues for which the sidechain conformation was analysed, and the total number of residues.

Mol	Chain	Analysed	Rotameric	Outliers	Percentiles	
1	A	568/665 (85%)	376 (66%)	192 (34%)	0	0
1	B	568/665 (85%)	376 (66%)	192 (34%)	0	0
All	All	1136/1330 (85%)	752 (66%)	384 (34%)	1	0

All (384) residues with a non-rotameric sidechain are listed below:

Mol	Chain	Res	Type
1	A	4	LEU
1	A	5	LYS
1	A	7	ILE
1	A	16	LEU
1	A	29	ARG
1	A	30	LEU
1	A	31	GLN
1	A	36	ARG
1	A	37	VAL
1	A	38	TYR
1	A	41	LYS
1	A	44	LEU
1	A	48	ARG
1	A	49	SER
1	A	50	SER
1	A	60	ARG
1	A	61	PHE
1	A	62	VAL
1	A	66	LEU
1	A	67	ARG
1	A	73	LEU
1	A	74	HIS
1	A	78	GLU
1	A	82	MET
1	A	84	GLU
1	A	85	ARG
1	A	96	VAL

Continued on next page...

Continued from previous page...

Mol	Chain	Res	Type
1	A	99	LEU
1	A	104	LEU
1	A	107	LYS
1	A	115	LEU
1	A	121	VAL
1	A	123	VAL
1	A	124	ASN
1	A	159	PHE
1	A	160	TRP
1	A	162	HIS
1	A	163	ILE
1	A	164	ILE
1	A	177	LEU
1	A	178	MET
1	A	179	LYS
1	A	180	GLU
1	A	181	TYR
1	A	182	GLU
1	A	188	ARG
1	A	192	LEU
1	A	197	ARG
1	A	200	ASP
1	A	205	LEU
1	A	214	ASP
1	A	218	SER
1	A	220	LEU
1	A	223	HIS
1	A	226	LEU
1	A	231	ASP
1	A	237	GLN
1	A	238	VAL
1	A	244	LYS
1	A	251	LYS
1	A	252	LYS
1	A	256	GLN
1	A	258	TRP
1	A	264	LEU
1	A	265	LYS
1	A	267	THR
1	A	268	ARG
1	A	269	ASN
1	A	272	GLN

Continued on next page...

Continued from previous page...

Mol	Chain	Res	Type
1	A	276	ILE
1	A	277	THR
1	A	278	LYS
1	A	279	LEU
1	A	282	LEU
1	A	284	LEU
1	A	288	LYS
1	A	289	VAL
1	A	290	ASP
1	A	292	ILE
1	A	293	GLU
1	A	294	HIS
1	A	295	TYR
1	A	298	GLU
1	A	301	LYS
1	A	303	SER
1	A	310	ARG
1	A	312	ASN
1	A	315	ASN
1	A	318	LYS
1	A	321	MET
1	A	327	SER
1	A	340	THR
1	A	341	THR
1	A	344	ARG
1	A	347	THR
1	A	352	GLU
1	A	365	LEU
1	A	367	ILE
1	A	370	VAL
1	A	372	LEU
1	A	373	THR
1	A	376	ARG
1	A	377	LEU
1	A	379	MET
1	A	386	LEU
1	A	391	ILE
1	A	392	ILE
1	A	394	ILE
1	A	400	LEU
1	A	408	LYS
1	A	430	LEU

Continued on next page...

Continued from previous page...

Mol	Chain	Res	Type
1	A	433	ILE
1	A	435	LEU
1	A	436	LYS
1	A	437	LEU
1	A	442	LEU
1	A	446	LEU
1	A	457	SER
1	A	459	SER
1	A	460	PHE
1	A	469	TYR
1	A	491	LEU
1	A	498	SER
1	A	501	GLN
1	A	504	LYS
1	A	506	ILE
1	A	508	MET
1	A	510	ILE
1	A	512	MET
1	A	513	LYS
1	A	515	THR
1	A	517	PHE
1	A	521	ILE
1	A	533	ILE
1	A	535	MET
1	A	536	LEU
1	A	537	LYS
1	A	542	TYR
1	A	544	LEU
1	A	545	LYS
1	A	546	ASN
1	A	548	PHE
1	A	549	LEU
1	A	550	VAL
1	A	551	LYS
1	A	552	THR
1	A	553	GLU
1	A	554	LYS
1	A	555	ASP
1	A	560	MET
1	A	565	ILE
1	A	568	ASN
1	A	571	GLU

Continued on next page...

Continued from previous page...

Mol	Chain	Res	Type
1	A	573	GLN
1	A	576	LEU
1	A	579	LEU
1	A	580	LEU
1	A	582	LEU
1	A	588	THR
1	A	590	MET
1	A	591	LEU
1	A	595	ILE
1	A	604	VAL
1	A	613	VAL
1	A	617	GLU
1	A	620	SER
1	A	625	TRP
1	A	641	LEU
1	A	643	LEU
1	A	646	LEU
1	A	649	THR
1	A	650	LYS
1	A	654	SER
1	A	659	LEU
1	A	672	PHE
1	A	676	ARG
1	A	684	TYR
1	A	687	GLN
1	A	688	GLU
1	A	692	LYS
1	A	696	GLU
1	A	697	ARG
1	A	699	ARG
1	A	700	GLU
1	A	701	PRO
1	A	702	ASN
1	A	703	LEU
1	A	705	LEU
1	A	706	LYS
1	A	709	LEU
1	A	711	ASP
1	A	717	VAL
1	B	4	LEU
1	B	5	LYS
1	B	7	ILE

Continued on next page...

Continued from previous page...

Mol	Chain	Res	Type
1	B	16	LEU
1	B	29	ARG
1	B	30	LEU
1	B	31	GLN
1	B	36	ARG
1	B	37	VAL
1	B	38	TYR
1	B	41	LYS
1	B	44	LEU
1	B	48	ARG
1	B	49	SER
1	B	50	SER
1	B	60	ARG
1	B	61	PHE
1	B	62	VAL
1	B	66	LEU
1	B	67	ARG
1	B	73	LEU
1	B	74	HIS
1	B	78	GLU
1	B	82	MET
1	B	84	GLU
1	B	85	ARG
1	B	96	VAL
1	B	99	LEU
1	B	104	LEU
1	B	107	LYS
1	B	115	LEU
1	B	121	VAL
1	B	123	VAL
1	B	124	ASN
1	B	159	PHE
1	B	160	TRP
1	B	162	HIS
1	B	163	ILE
1	B	164	ILE
1	B	177	LEU
1	B	178	MET
1	B	179	LYS
1	B	180	GLU
1	B	181	TYR
1	B	182	GLU

Continued on next page...

Continued from previous page...

Mol	Chain	Res	Type
1	B	188	ARG
1	B	192	LEU
1	B	197	ARG
1	B	200	ASP
1	B	205	LEU
1	B	214	ASP
1	B	218	SER
1	B	220	LEU
1	B	223	HIS
1	B	226	LEU
1	B	231	ASP
1	B	237	GLN
1	B	238	VAL
1	B	244	LYS
1	B	251	LYS
1	B	252	LYS
1	B	256	GLN
1	B	258	TRP
1	B	264	LEU
1	B	265	LYS
1	B	267	THR
1	B	268	ARG
1	B	269	ASN
1	B	272	GLN
1	B	276	ILE
1	B	277	THR
1	B	278	LYS
1	B	279	LEU
1	B	282	LEU
1	B	284	LEU
1	B	288	LYS
1	B	289	VAL
1	B	290	ASP
1	B	292	ILE
1	B	293	GLU
1	B	294	HIS
1	B	295	TYR
1	B	298	GLU
1	B	301	LYS
1	B	303	SER
1	B	310	ARG
1	B	312	ASN

Continued on next page...

Continued from previous page...

Mol	Chain	Res	Type
1	B	315	ASN
1	B	318	LYS
1	B	321	MET
1	B	327	SER
1	B	340	THR
1	B	341	THR
1	B	344	ARG
1	B	347	THR
1	B	352	GLU
1	B	365	LEU
1	B	367	ILE
1	B	370	VAL
1	B	372	LEU
1	B	373	THR
1	B	376	ARG
1	B	377	LEU
1	B	379	MET
1	B	386	LEU
1	B	391	ILE
1	B	392	ILE
1	B	394	ILE
1	B	400	LEU
1	B	408	LYS
1	B	430	LEU
1	B	433	ILE
1	B	435	LEU
1	B	436	LYS
1	B	437	LEU
1	B	442	LEU
1	B	446	LEU
1	B	457	SER
1	B	459	SER
1	B	460	PHE
1	B	469	TYR
1	B	491	LEU
1	B	498	SER
1	B	501	GLN
1	B	504	LYS
1	B	506	ILE
1	B	508	MET
1	B	510	ILE
1	B	512	MET

Continued on next page...

Continued from previous page...

Mol	Chain	Res	Type
1	B	513	LYS
1	B	515	THR
1	B	517	PHE
1	B	521	ILE
1	B	533	ILE
1	B	535	MET
1	B	536	LEU
1	B	537	LYS
1	B	542	TYR
1	B	544	LEU
1	B	545	LYS
1	B	546	ASN
1	B	548	PHE
1	B	549	LEU
1	B	550	VAL
1	B	551	LYS
1	B	552	THR
1	B	553	GLU
1	B	554	LYS
1	B	555	ASP
1	B	560	MET
1	B	565	ILE
1	B	568	ASN
1	B	571	GLU
1	B	573	GLN
1	B	576	LEU
1	B	579	LEU
1	B	580	LEU
1	B	582	LEU
1	B	588	THR
1	B	590	MET
1	B	591	LEU
1	B	595	ILE
1	B	604	VAL
1	B	613	VAL
1	B	617	GLU
1	B	620	SER
1	B	625	TRP
1	B	641	LEU
1	B	643	LEU
1	B	646	LEU
1	B	649	THR

Continued on next page...

Continued from previous page...

Mol	Chain	Res	Type
1	B	650	LYS
1	B	654	SER
1	B	659	LEU
1	B	672	PHE
1	B	676	ARG
1	B	684	TYR
1	B	687	GLN
1	B	688	GLU
1	B	692	LYS
1	B	696	GLU
1	B	697	ARG
1	B	699	ARG
1	B	700	GLU
1	B	701	PRO
1	B	702	ASN
1	B	703	LEU
1	B	705	LEU
1	B	706	LYS
1	B	709	LEU
1	B	711	ASP
1	B	717	VAL

Sometimes sidechains can be flipped to improve hydrogen bonding and reduce clashes. All (31) such sidechains are listed below:

Mol	Chain	Res	Type
1	A	14	ASN
1	A	63	ASN
1	A	124	ASN
1	A	223	HIS
1	A	228	ASN
1	A	272	GLN
1	A	339	GLN
1	A	398	GLN
1	A	500	ASN
1	A	568	ASN
1	A	573	GLN
1	A	575	GLN
1	A	609	GLN
1	A	616	GLN
1	A	687	GLN
1	B	14	ASN
1	B	63	ASN

Continued on next page...

Continued from previous page...

Mol	Chain	Res	Type
1	B	124	ASN
1	B	223	HIS
1	B	228	ASN
1	B	272	GLN
1	B	339	GLN
1	B	398	GLN
1	B	490	GLN
1	B	500	ASN
1	B	568	ASN
1	B	573	GLN
1	B	575	GLN
1	B	609	GLN
1	B	616	GLN
1	B	687	GLN

5.3.3 RNA [i](#)

There are no RNA molecules in this entry.

5.4 Non-standard residues in protein, DNA, RNA chains [i](#)

There are no non-standard protein/DNA/RNA residues in this entry.

5.5 Carbohydrates [i](#)

There are no oligosaccharides in this entry.

5.6 Ligand geometry [i](#)

2 ligands are modelled in this entry.

In the following table, the Counts columns list the number of bonds (or angles) for which Mogul statistics could be retrieved, the number of bonds (or angles) that are observed in the model and the number of bonds (or angles) that are defined in the Chemical Component Dictionary. The Link column lists molecule types, if any, to which the group is linked. The Z score for a bond length (or angle) is the number of standard deviations the observed value is removed from the expected value. A bond length (or angle) with $|Z| > 2$ is considered an outlier worth inspection. RMSZ is the root-mean-square of all Z scores of the bond lengths (or angles).

Mol	Type	Chain	Res	Link	Bond lengths			Bond angles		
					Counts	RMSZ	# Z > 2	Counts	RMSZ	# Z > 2
2	PEE	A	801	-	8,8,50	0.23	0	7,7,55	0.54	0
2	PEE	B	801	-	8,8,50	0.23	0	7,7,55	0.54	0

In the following table, the Chirals column lists the number of chiral outliers, the number of chiral centers analysed, the number of these observed in the model and the number defined in the Chemical Component Dictionary. Similar counts are reported in the Torsion and Rings columns. '-' means no outliers of that kind were identified.

Mol	Type	Chain	Res	Link	Chirals	Torsions	Rings
2	PEE	A	801	-	-	2/6/6/54	-
2	PEE	B	801	-	-	2/6/6/54	-

There are no bond length outliers.

There are no bond angle outliers.

There are no chirality outliers.

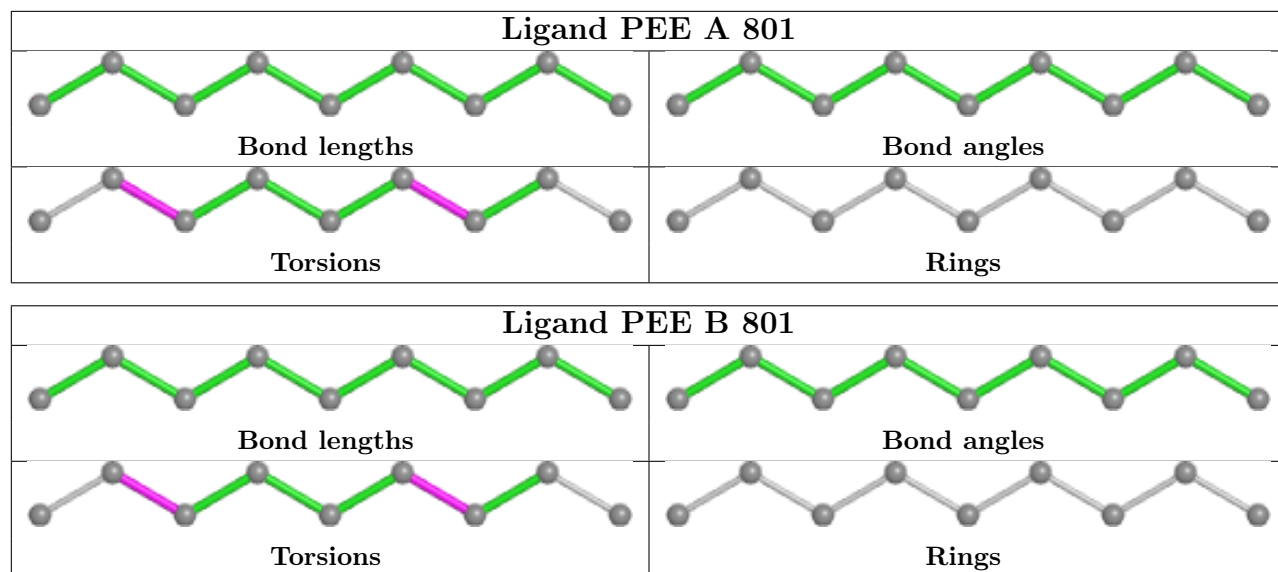
All (4) torsion outliers are listed below:

Mol	Chain	Res	Type	Atoms
2	A	801	PEE	C43-C44-C45-C46
2	B	801	PEE	C43-C44-C45-C46
2	A	801	PEE	C39-C40-C41-C42
2	B	801	PEE	C39-C40-C41-C42

There are no ring outliers.

No monomer is involved in short contacts.

The following is a two-dimensional graphical depiction of Mogul quality analysis of bond lengths, bond angles, torsion angles, and ring geometry for all instances of the Ligand of Interest. In addition, ligands with molecular weight > 250 and outliers as shown on the validation Tables will also be included. For torsion angles, if less than 5% of the Mogul distribution of torsion angles is within 10 degrees of the torsion angle in question, then that torsion angle is considered an outlier. Any bond that is central to one or more torsion angles identified as an outlier by Mogul will be highlighted in the graph. For rings, the root-mean-square deviation (RMSD) between the ring in question and similar rings identified by Mogul is calculated over all ring torsion angles. If the average RMSD is greater than 60 degrees and the minimal RMSD between the ring in question and any Mogul-identified rings is also greater than 60 degrees, then that ring is considered an outlier. The outliers are highlighted in purple. The color gray indicates Mogul did not find sufficient equivalents in the CSD to analyse the geometry.



5.7 Other polymers [i](#)

There are no such residues in this entry.

5.8 Polymer linkage issues [i](#)

There are no chain breaks in this entry.

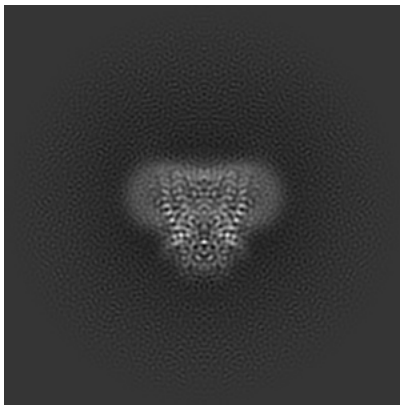
6 Map visualisation [i](#)

This section contains visualisations of the EMDB entry EMD-39399. These allow visual inspection of the internal detail of the map and identification of artifacts.

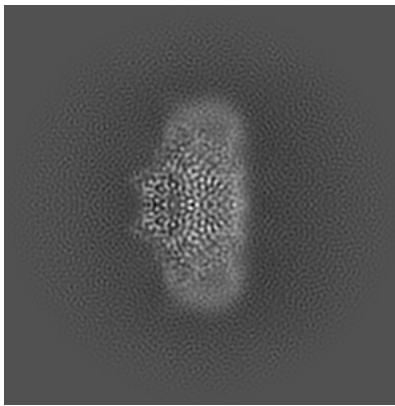
Images derived from a raw map, generated by summing the deposited half-maps, are presented below the corresponding image components of the primary map to allow further visual inspection and comparison with those of the primary map.

6.1 Orthogonal projections [i](#)

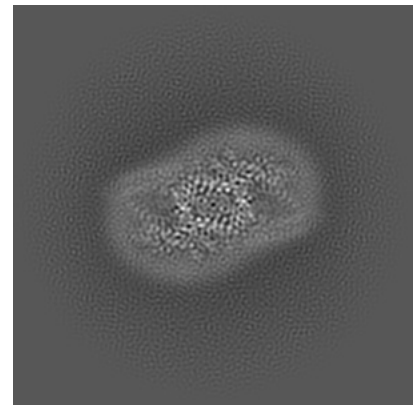
6.1.1 Primary map



X

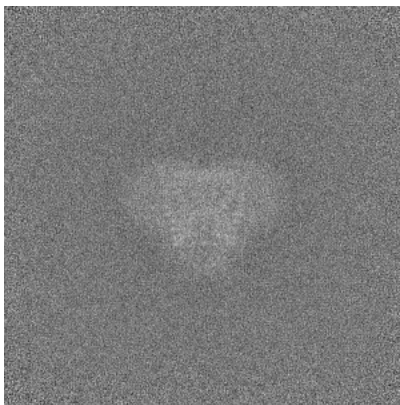


Y

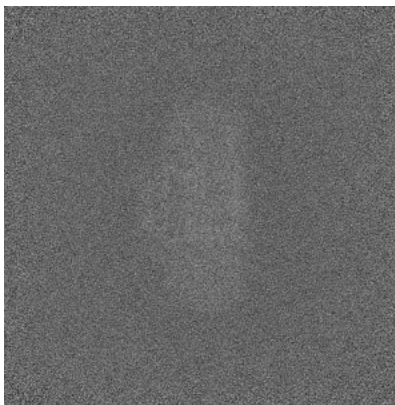


Z

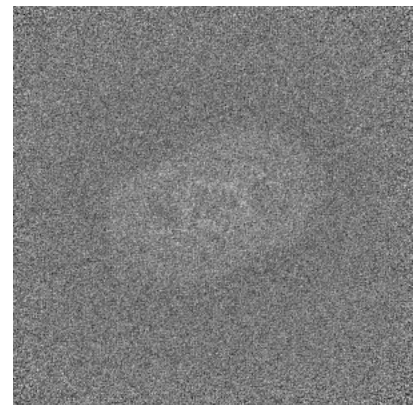
6.1.2 Raw map



X



Y

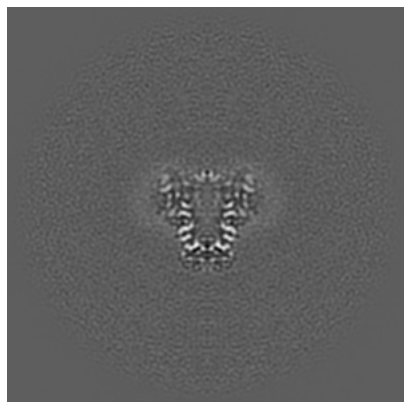


Z

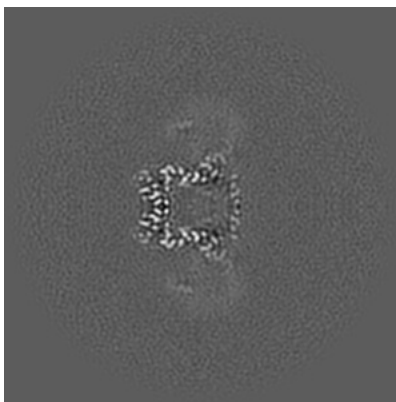
The images above show the map projected in three orthogonal directions.

6.2 Central slices [i](#)

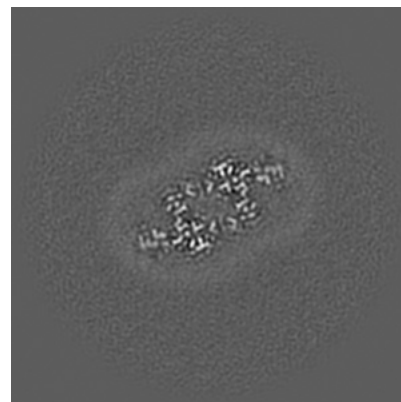
6.2.1 Primary map



X Index: 360

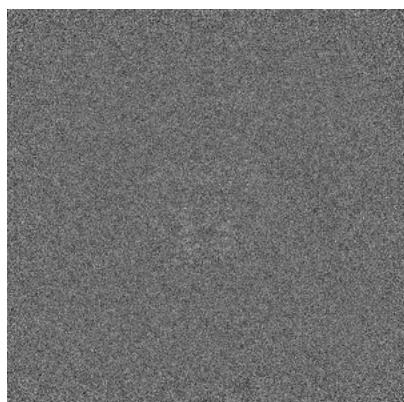


Y Index: 360

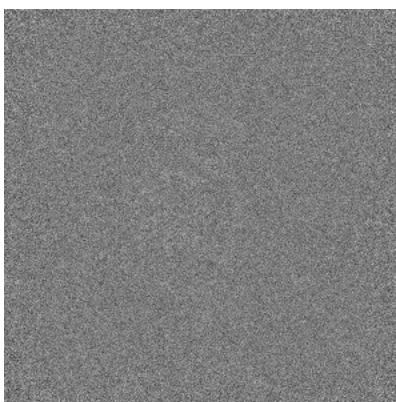


Z Index: 360

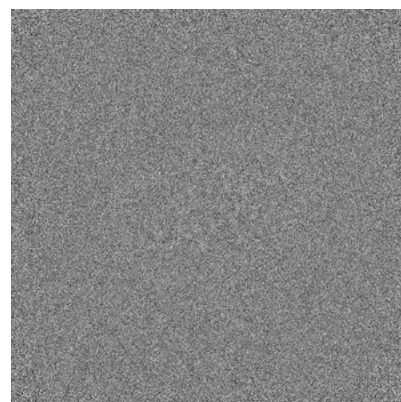
6.2.2 Raw map



X Index: 360



Y Index: 360

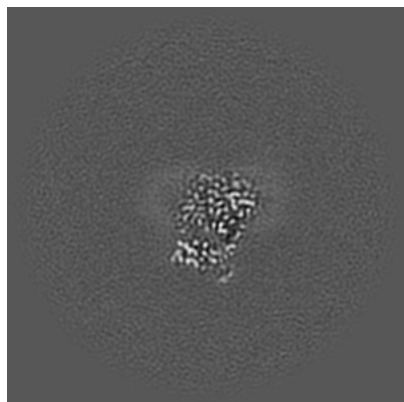


Z Index: 360

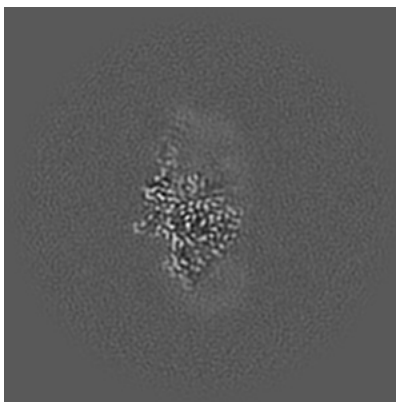
The images above show central slices of the map in three orthogonal directions.

6.3 Largest variance slices [i](#)

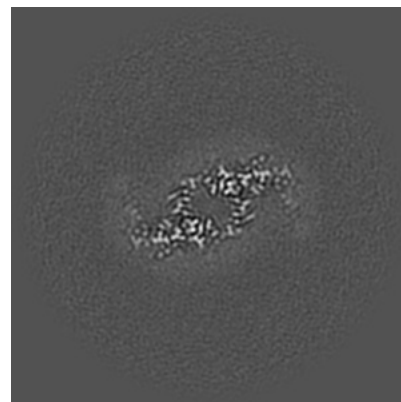
6.3.1 Primary map



X Index: 402

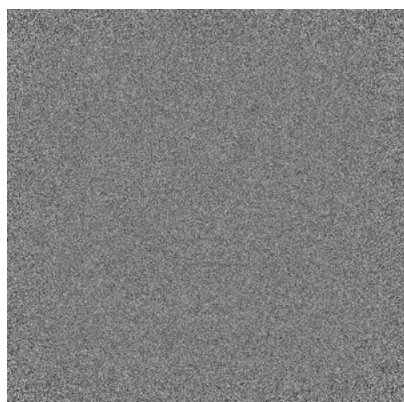


Y Index: 319

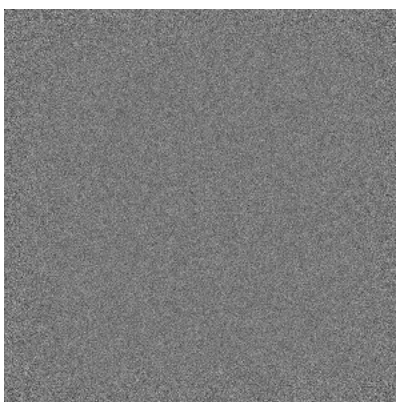


Z Index: 331

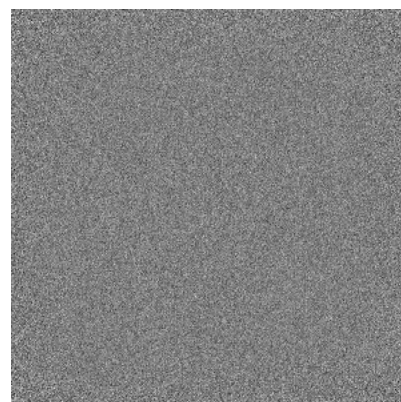
6.3.2 Raw map



X Index: 0



Y Index: 0

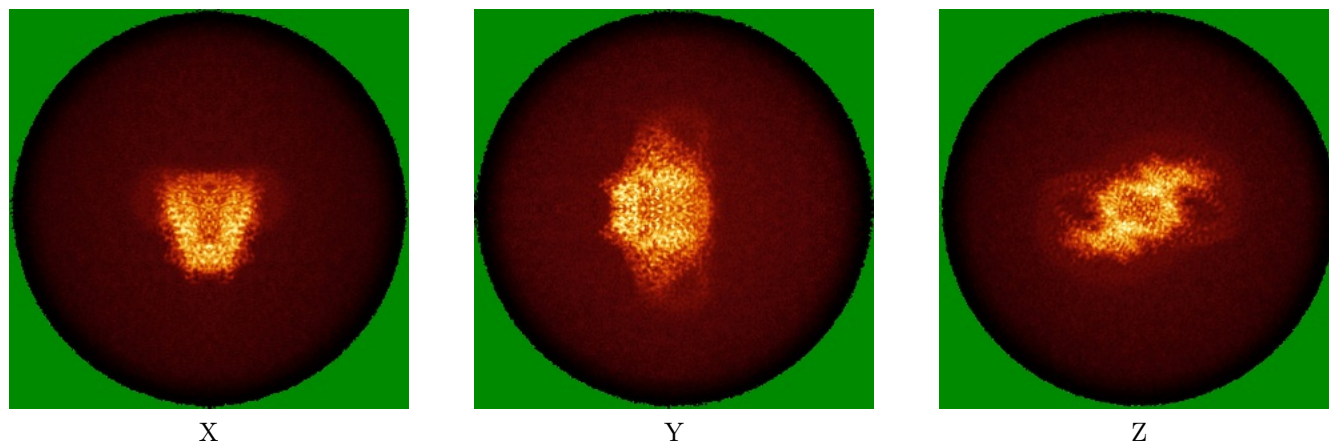


Z Index: 0

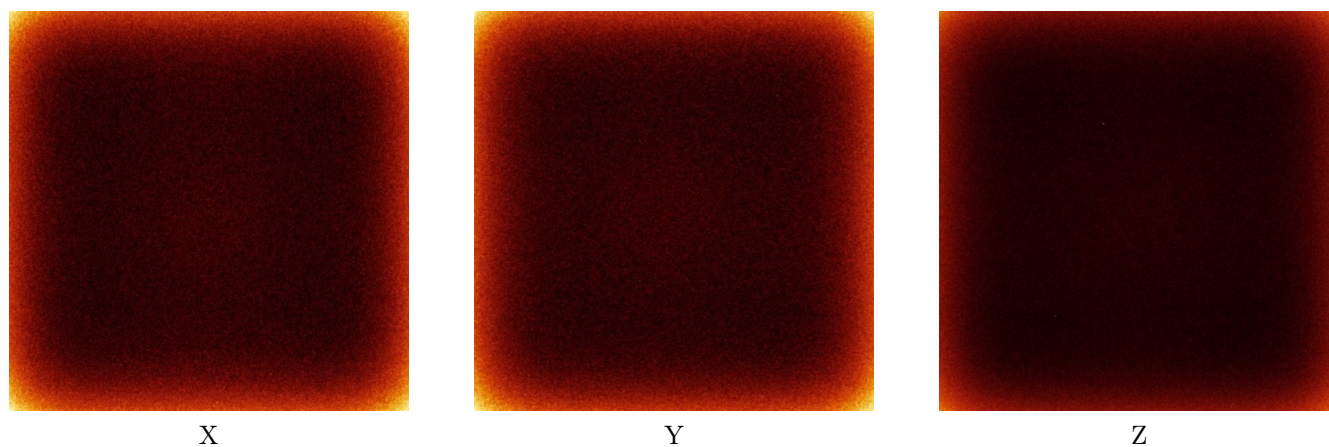
The images above show the largest variance slices of the map in three orthogonal directions.

6.4 Orthogonal standard-deviation projections (False-color) [i](#)

6.4.1 Primary map



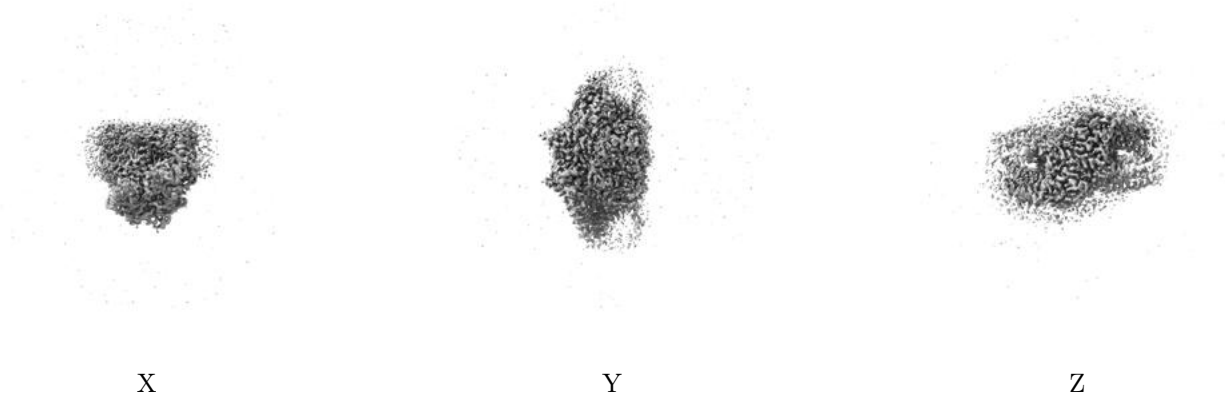
6.4.2 Raw map



The images above show the map standard deviation projections with false color in three orthogonal directions. Minimum values are shown in green, max in blue, and dark to light orange shades represent small to large values respectively.

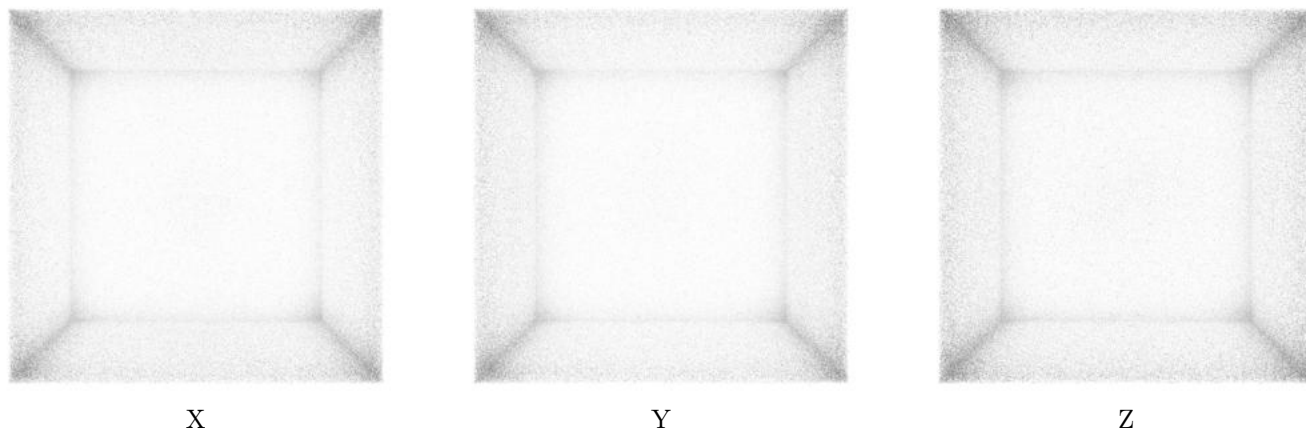
6.5 Orthogonal surface views [i](#)

6.5.1 Primary map



The images above show the 3D surface view of the map at the recommended contour level 0.03. These images, in conjunction with the slice images, may facilitate assessment of whether an appropriate contour level has been provided.

6.5.2 Raw map



These images show the 3D surface of the raw map. The raw map's contour level was selected so that its surface encloses the same volume as the primary map does at its recommended contour level.

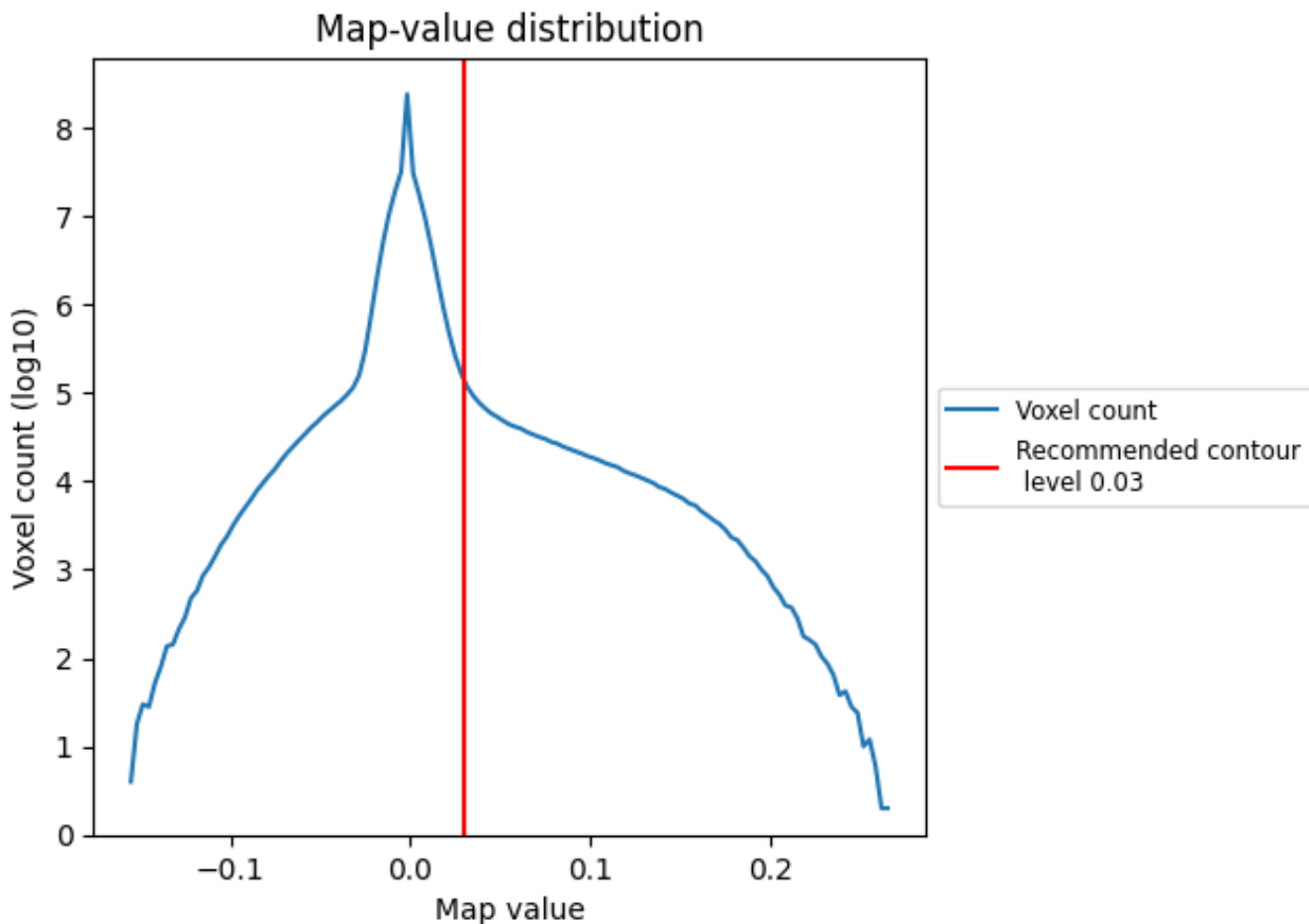
6.6 Mask visualisation [i](#)

This section was not generated. No masks/segmentation were deposited.

7 Map analysis [i](#)

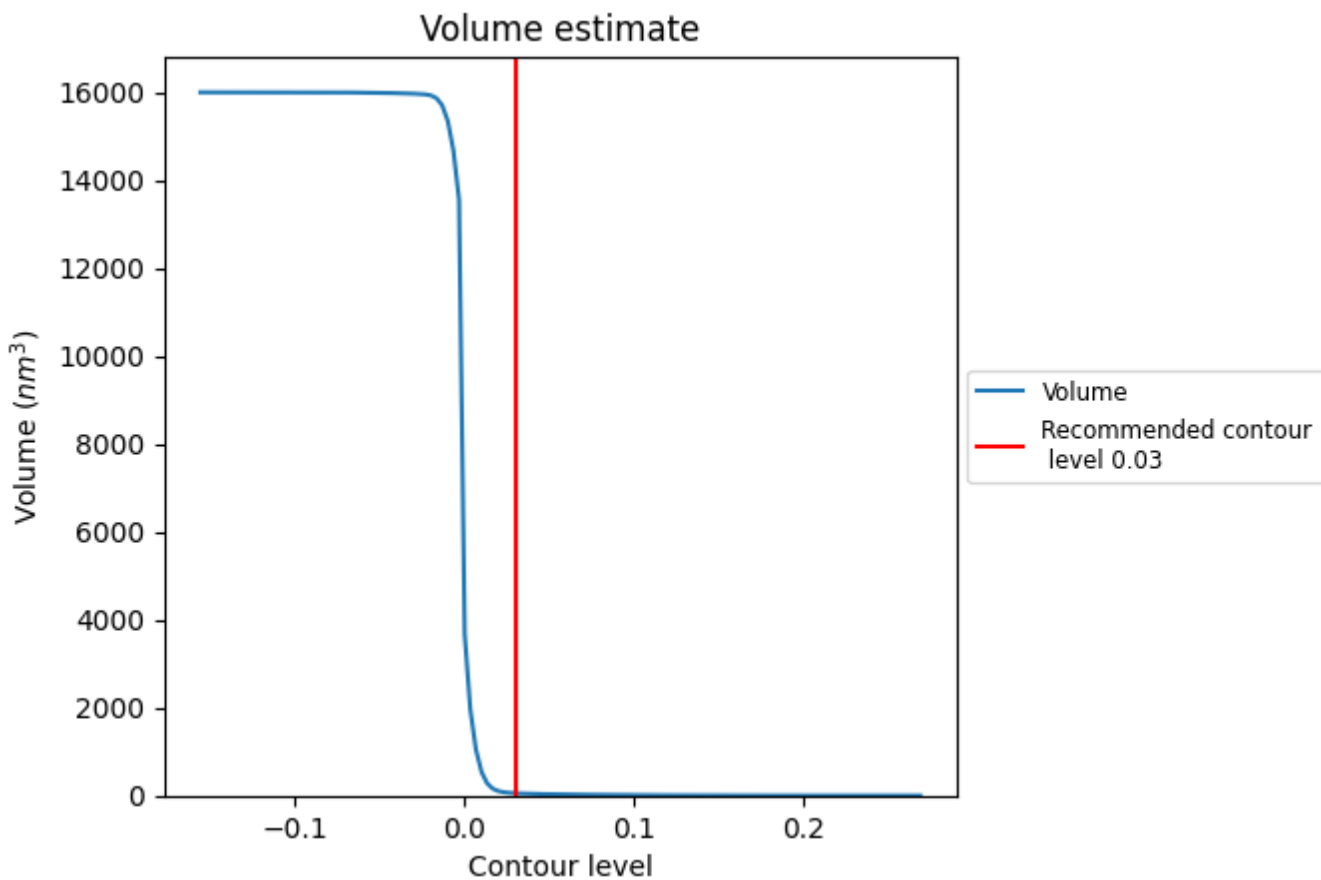
This section contains the results of statistical analysis of the map.

7.1 Map-value distribution [i](#)



The map-value distribution is plotted in 128 intervals along the x-axis. The y-axis is logarithmic. A spike in this graph at zero usually indicates that the volume has been masked.

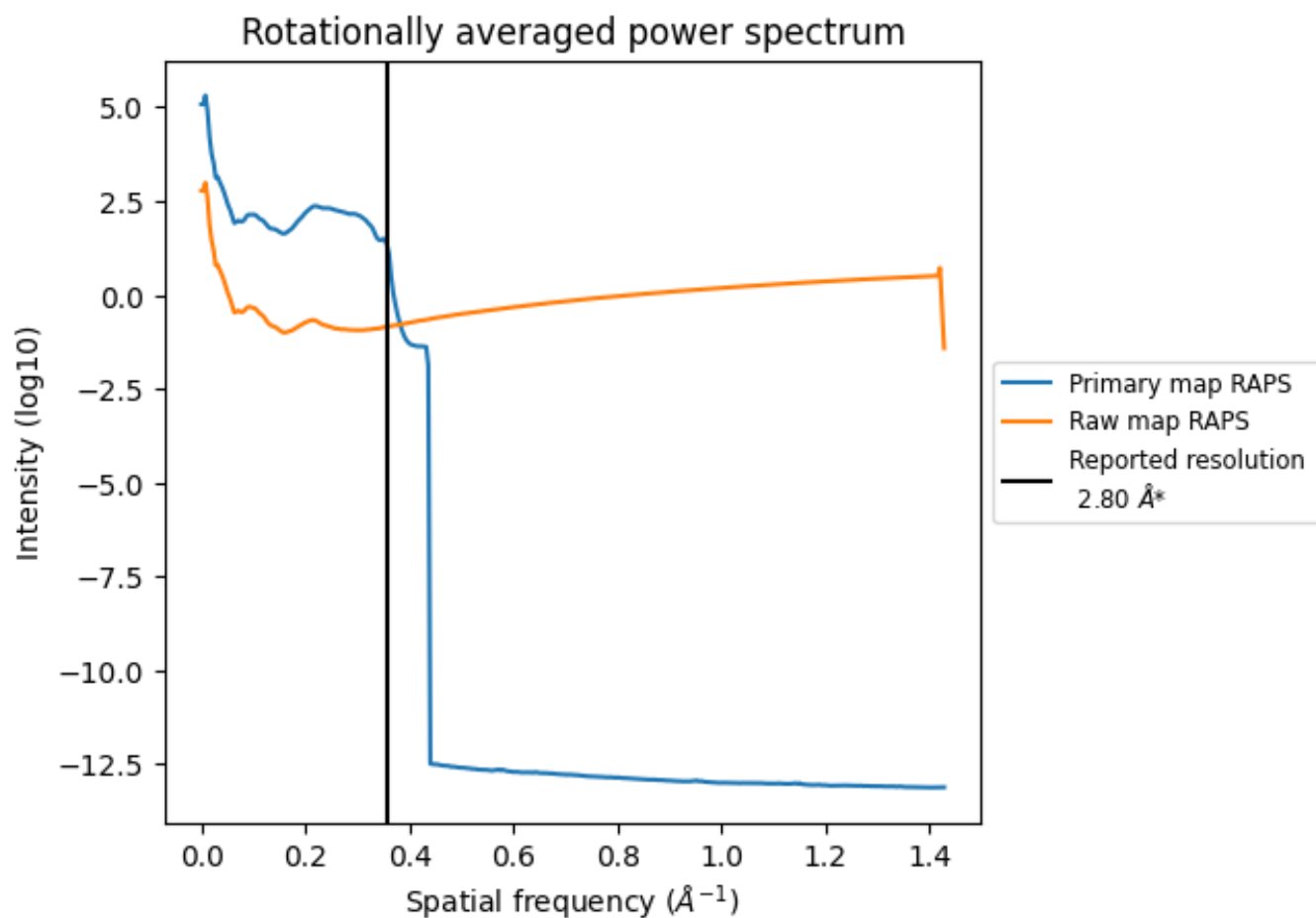
7.2 Volume estimate [i](#)



The volume at the recommended contour level is 53 nm³; this corresponds to an approximate mass of 48 kDa.

The volume estimate graph shows how the enclosed volume varies with the contour level. The recommended contour level is shown as a vertical line and the intersection between the line and the curve gives the volume of the enclosed surface at the given level.

7.3 Rotationally averaged power spectrum [\(i\)](#)

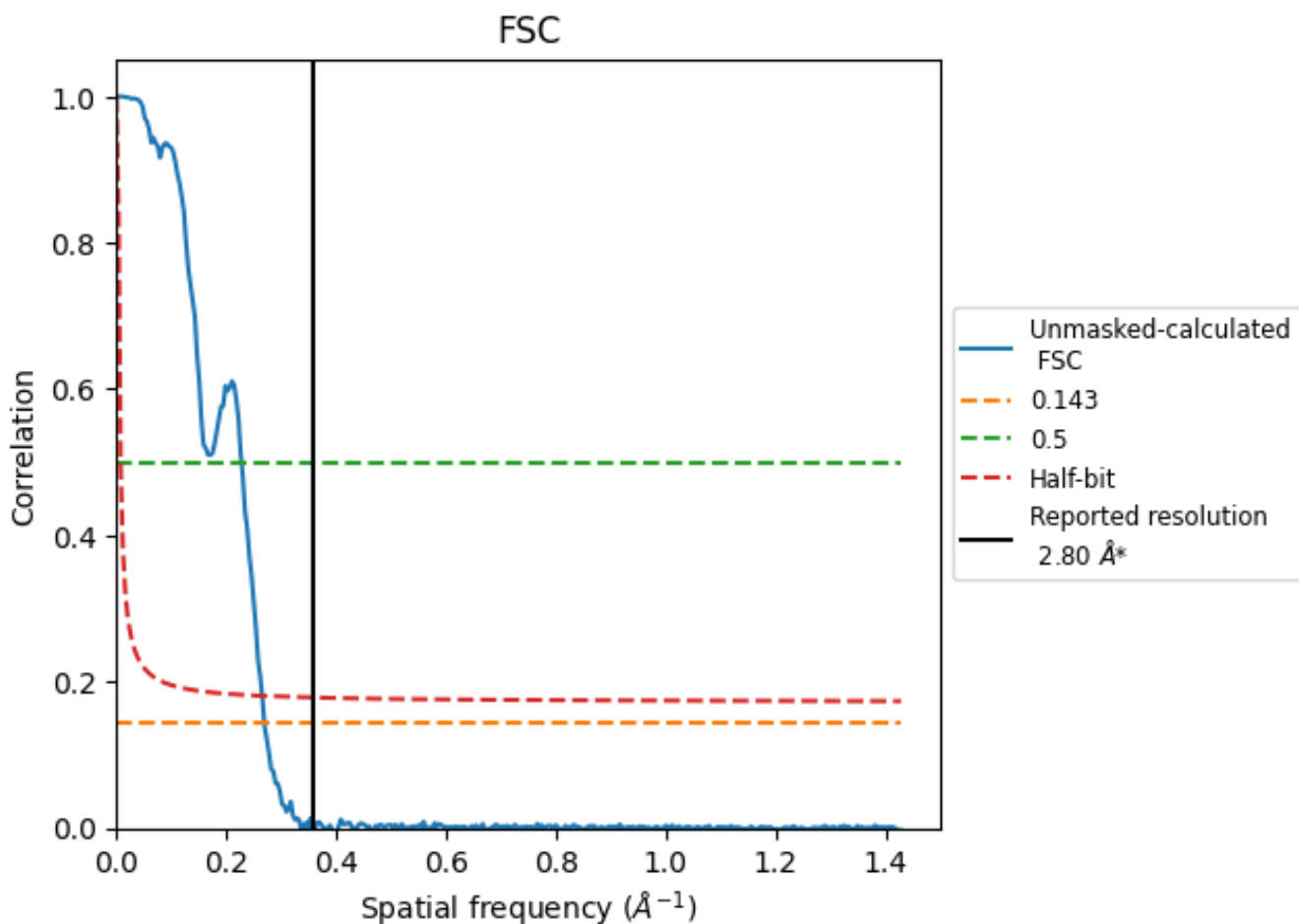


*Reported resolution corresponds to spatial frequency of 0.357 Å⁻¹

8 Fourier-Shell correlation [i](#)

Fourier-Shell Correlation (FSC) is the most commonly used method to estimate the resolution of single-particle and subtomogram-averaged maps. The shape of the curve depends on the imposed symmetry, mask and whether or not the two 3D reconstructions used were processed from a common reference. The reported resolution is shown as a black line. A curve is displayed for the half-bit criterion in addition to lines showing the 0.143 gold standard cut-off and 0.5 cut-off.

8.1 FSC [i](#)



*Reported resolution corresponds to spatial frequency of 0.357 Å⁻¹

8.2 Resolution estimates [i](#)

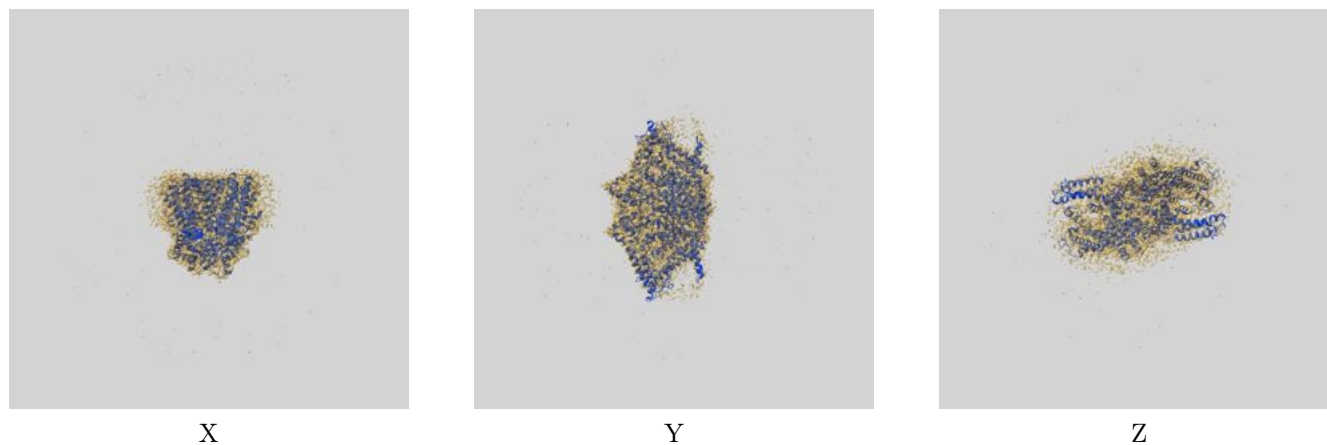
Resolution estimate (Å)	Estimation criterion (FSC cut-off)		
	0.143	0.5	Half-bit
Reported by author	2.80	-	-
Author-provided FSC curve	-	-	-
Unmasked-calculated*	3.71	4.39	3.77

*Resolution estimate based on FSC curve calculated by comparison of deposited half-maps. The value from deposited half-maps intersecting FSC 0.143 CUT-OFF 3.71 differs from the reported value 2.8 by more than 10 %

9 Map-model fit [i](#)

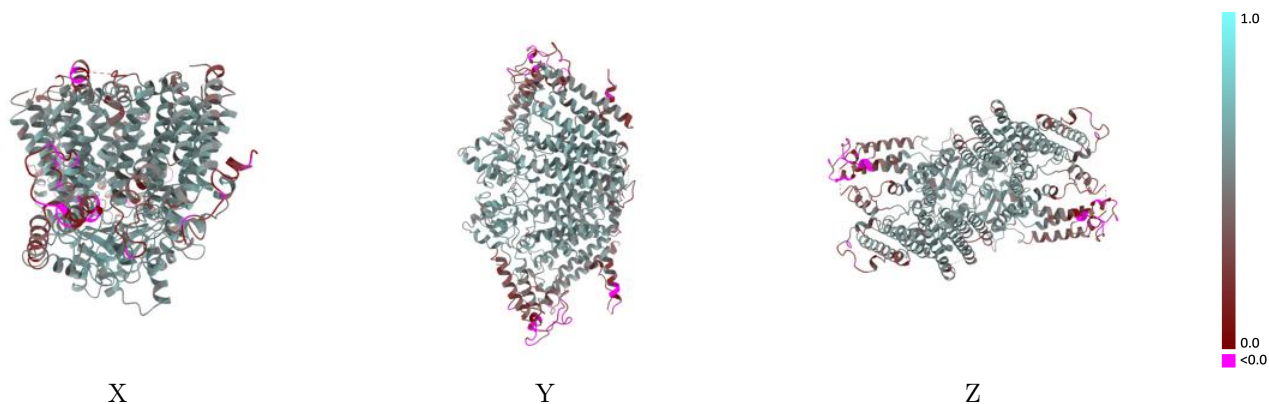
This section contains information regarding the fit between EMDB map EMD-39399 and PDB model 8YMM. Per-residue inclusion information can be found in section 3 on page 5.

9.1 Map-model overlay [i](#)



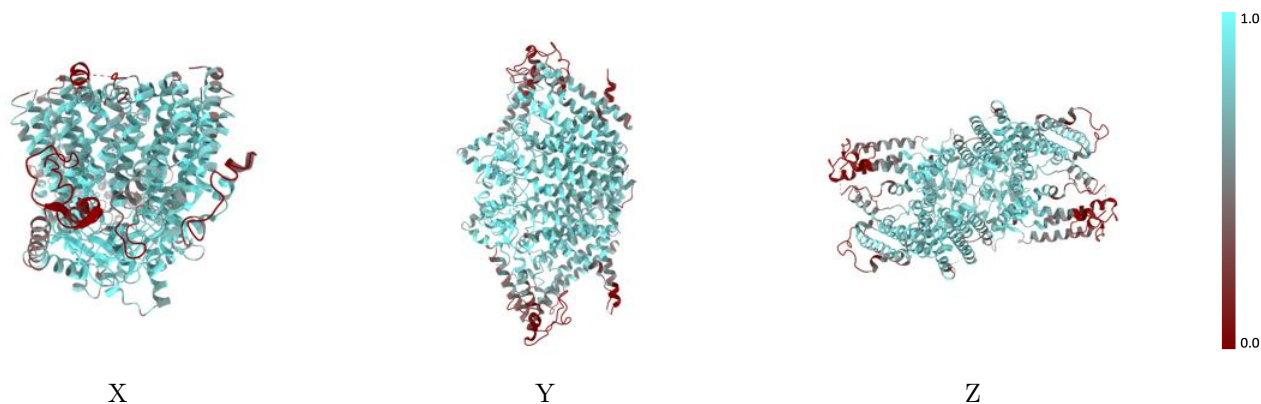
The images above show the 3D surface view of the map at the recommended contour level 0.03 at 50% transparency in yellow overlaid with a ribbon representation of the model coloured in blue. These images allow for the visual assessment of the quality of fit between the atomic model and the map.

9.2 Q-score mapped to coordinate model [\(i\)](#)



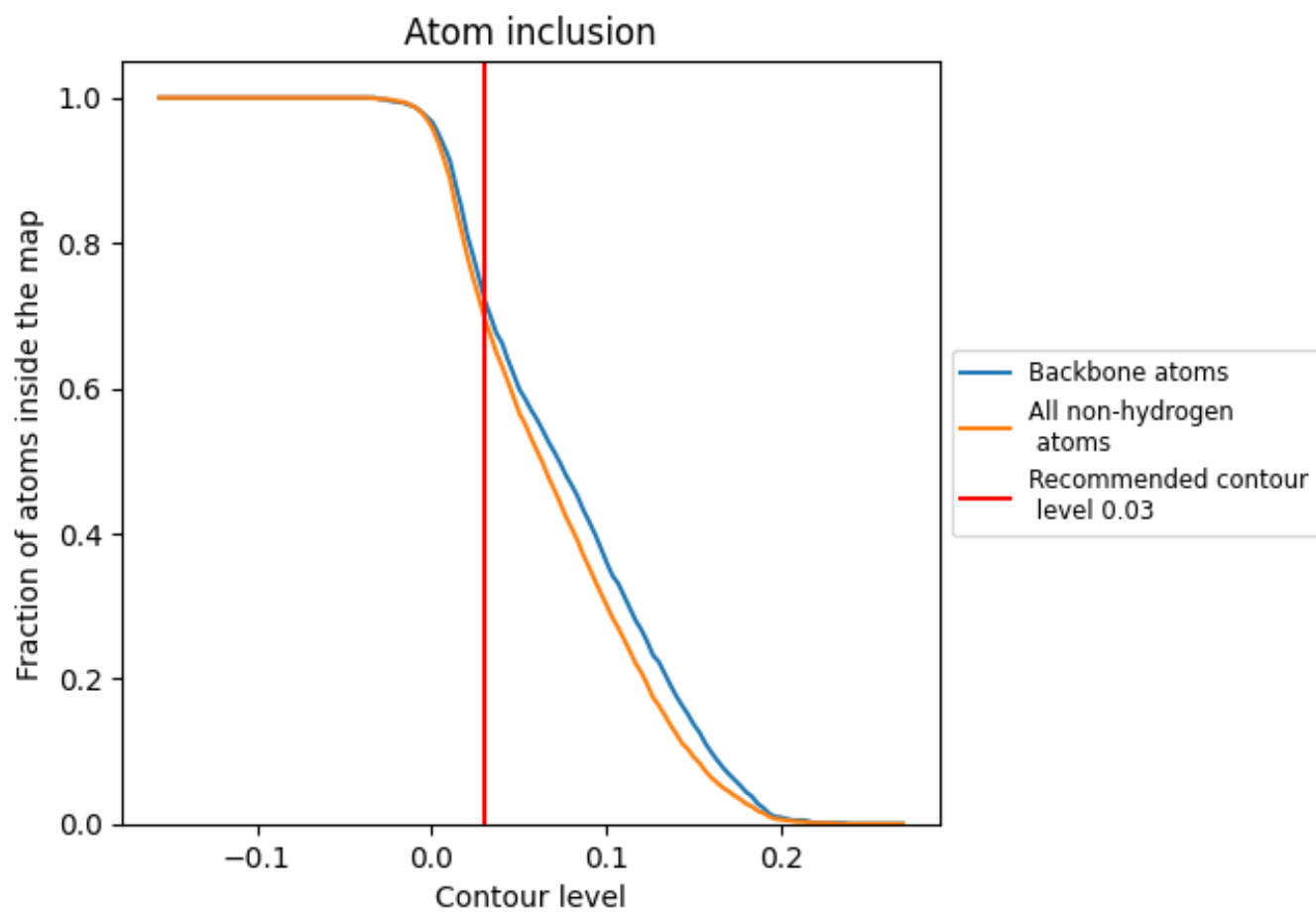
The images above show the model with each residue coloured according to its Q-score. This shows their resolvability in the map with higher Q-score values reflecting better resolvability. Please note: Q-score is calculating the resolvability of atoms, and thus high values are only expected at resolutions at which atoms can be resolved. Low Q-score values may therefore be expected for many entries.

9.3 Atom inclusion mapped to coordinate model [\(i\)](#)



The images above show the model with each residue coloured according to its atom inclusion. This shows to what extent they are inside the map at the recommended contour level (0.03).






9.4 Atom inclusion [i](#)



At the recommended contour level, 72% of all backbone atoms, 70% of all non-hydrogen atoms, are inside the map.

9.5 Map-model fit summary [i](#)

The table lists the average atom inclusion at the recommended contour level (0.03) and Q-score for the entire model and for each chain.

Chain	Atom inclusion	Q-score
All	 0.6980	 0.4810
A	 0.6980	 0.4810
B	 0.6980	 0.4820

