



# Full wwPDB X-ray Structure Validation Report ⓘ

May 21, 2020 – 07:13 am BST

PDB ID : 1YOW  
Title : human Steroidogenic Factor 1 LBD with bound Co-factor Peptide  
Authors : Krylova, I.N.; Sablin, E.P.; Xu, R.X.; Waitt, G.M.; Juzumiene, D.; Williams, J.D.; Ingraham, H.A.; Willson, T.M.; Williams, S.P.; Montana, V.; Madauss, K.P.; Moore, J.; Bynum, J.M.; Lebedeva, L.; MacKay, J.A.; Suzawa, M.; Guy, R.K.; Thornton, J.W.  
Deposited on : 2005-01-28  
Resolution : 3.00 Å(reported)

This is a Full wwPDB X-ray Structure Validation Report for a publicly released PDB entry.

We welcome your comments at [validation@mail.wwpdb.org](mailto:validation@mail.wwpdb.org)

A user guide is available at

<https://www.wwpdb.org/validation/2017/XrayValidationReportHelp>

with specific help available everywhere you see the ⓘ symbol.

---

The following versions of software and data (see [references ⓘ](#)) were used in the production of this report:

MolProbity : 4.02b-467  
Mogul : 1.8.5 (274361), CSD as541be (2020)  
Xtriage (Phenix) : 1.13  
EDS : 2.11  
buster-report : 1.1.7 (2018)  
Percentile statistics : 20191225.v01 (using entries in the PDB archive December 25th 2019)  
Refmac : 5.8.0158  
CCP4 : 7.0.044 (Gargrove)  
Ideal geometry (proteins) : Engh & Huber (2001)  
Ideal geometry (DNA, RNA) : Parkinson et al. (1996)  
Validation Pipeline (wwPDB-VP) : 2.11

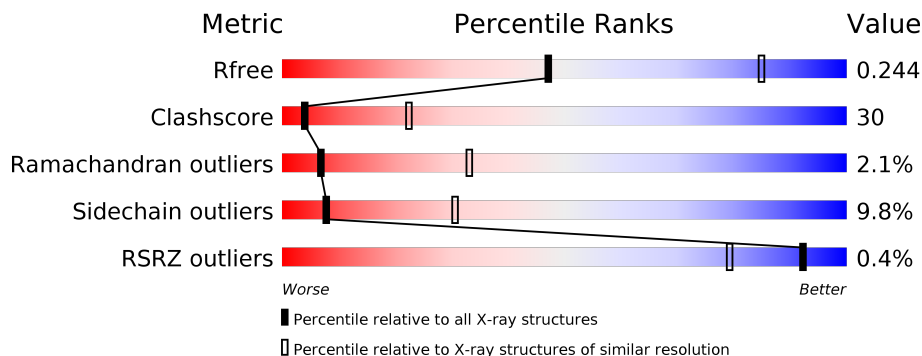
# 1 Overall quality at a glance

The following experimental techniques were used to determine the structure:

*X-RAY DIFFRACTION*

The reported resolution of this entry is 3.00 Å.

Percentile scores (ranging between 0-100) for global validation metrics of the entry are shown in the following graphic. The table shows the number of entries on which the scores are based.



Metric	Whole archive (#Entries)	Similar resolution (#Entries, resolution range(Å))
$R_{free}$	130704	2092 (3.00-3.00)
Clashscore	141614	2416 (3.00-3.00)
Ramachandran outliers	138981	2333 (3.00-3.00)
Sidechain outliers	138945	2336 (3.00-3.00)
RSRZ outliers	127900	1990 (3.00-3.00)

The table below summarises the geometric issues observed across the polymeric chains and their fit to the electron density. The red, orange, yellow and green segments on the lower bar indicate the fraction of residues that contain outliers for  $\geq 3$ , 2, 1 and 0 types of geometric quality criteria respectively. A grey segment represents the fraction of residues that are not modelled. The numeric value for each fraction is indicated below the corresponding segment, with a dot representing fractions  $\leq 5\%$ . The upper red bar (where present) indicates the fraction of residues that have poor fit to the electron density. The numeric value is given above the bar.

Mol	Chain	Length	Quality of chain
1	A	242	
2	B	11	

## 2 Entry composition i

There are 4 unique types of molecules in this entry. The entry contains 1998 atoms, of which 0 are hydrogens and 0 are deuteriums.

In the tables below, the ZeroOcc column contains the number of atoms modelled with zero occupancy, the AltConf column contains the number of residues with at least one atom in alternate conformation and the Trace column contains the number of residues modelled with at most 2 atoms.

- Molecule 1 is a protein called Steroidogenic factor 1.

Mol	Chain	Residues	Atoms					ZeroOcc	AltConf	Trace
			Total	C	N	O	S			
1	A	230	1783	1146	296	327	14	0	0	0

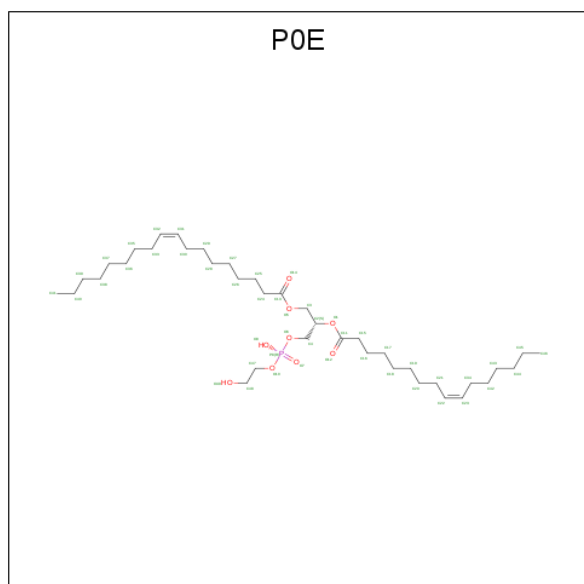
There are 3 discrepancies between the modelled and reference sequences:

Chain	Residue	Modelled	Actual	Comment	Reference
A	220	GLY	-	CLONING ARTIFACT	UNP Q13285
A	221	SER	-	CLONING ARTIFACT	UNP Q13285
A	227	MET	ILE	CLONING ARTIFACT	UNP Q13285

- Molecule 2 is a protein called TIF2 peptide.

Mol	Chain	Residues	Atoms				ZeroOcc	AltConf	Trace
			Total	C	N	O			
2	B	11	73	47	13	13	0	0	0

- Molecule 3 is PHOSPHATIDYL ETHANOL (three-letter code: POE) (formula:  $C_{39}H_{73}O_9P$ ).



Mol	Chain	Residues	Atoms				ZeroOcc	AltConf
3	A	1	Total	C	O	P	0	0
			46	37	8	1		

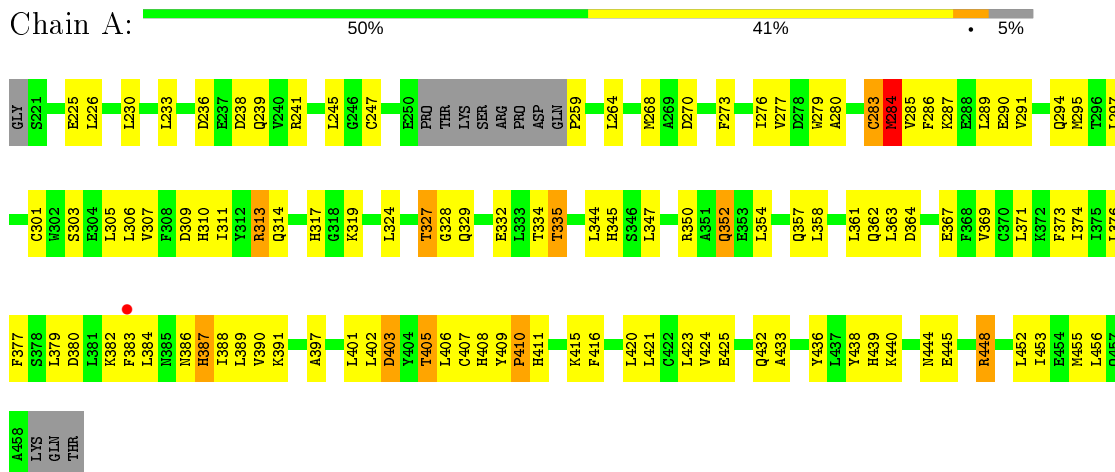
- Molecule 4 is water.

Mol	Chain	Residues	Atoms		ZeroOcc	AltConf
4	A	94	Total	O	0	0
			94	94		
4	B	2	Total	O	0	0
			2	2		

### 3 Residue-property plots

These plots are drawn for all protein, RNA and DNA chains in the entry. The first graphic for a chain summarises the proportions of the various outlier classes displayed in the second graphic. The second graphic shows the sequence view annotated by issues in geometry and electron density. Residues are color-coded according to the number of geometric quality criteria for which they contain at least one outlier: green = 0, yellow = 1, orange = 2 and red = 3 or more. A red dot above a residue indicates a poor fit to the electron density ( $RSRZ > 2$ ). Stretches of 2 or more consecutive residues without any outlier are shown as a green connector. Residues present in the sample, but not in the model, are shown in grey.

- Molecule 1: Steroidogenic factor 1



- Molecule 2: TIF2 peptide



## 4 Data and refinement statistics

Property	Value	Source
Space group	P 41 21 2	Depositor
Cell constants a, b, c, $\alpha$ , $\beta$ , $\gamma$	73.33Å 73.33Å 139.02Å 90.00° 90.00° 90.00°	Depositor
Resolution (Å)	20.00 – 3.00 19.99 – 2.90	Depositor EDS
% Data completeness (in resolution range)	90.8 (20.00-3.00) 90.8 (19.99-2.90)	Depositor EDS
$R_{merge}$	0.05	Depositor
$R_{sym}$	(Not available)	Depositor
$\langle I/\sigma(I) \rangle$ <sup>1</sup>	2.61 (at 2.88Å)	Xtrriage
Refinement program	CNS	Depositor
R, $R_{free}$	0.246 , 0.290 0.254 , 0.244	Depositor DCC
$R_{free}$ test set	576 reflections (6.49%)	wwPDB-VP
Wilson B-factor (Å <sup>2</sup> )	87.5	Xtrriage
Anisotropy	0.451	Xtrriage
Bulk solvent $k_{sol}$ (e/Å <sup>3</sup> ), $B_{sol}$ (Å <sup>2</sup> )	0.28 , 51.9	EDS
L-test for twinning <sup>2</sup>	$\langle  L  \rangle = 0.49$ , $\langle L^2 \rangle = 0.32$	Xtrriage
Estimated twinning fraction	No twinning to report.	Xtrriage
$F_o, F_c$ correlation	0.94	EDS
Total number of atoms	1998	wwPDB-VP
Average B, all atoms (Å <sup>2</sup> )	85.0	wwPDB-VP

Xtrriage's analysis on translational NCS is as follows: *The largest off-origin peak in the Patterson function is 4.02% of the height of the origin peak. No significant pseudotranslation is detected.*

<sup>1</sup>Intensities estimated from amplitudes.

<sup>2</sup>Theoretical values of  $\langle |L| \rangle$ ,  $\langle L^2 \rangle$  for acentric reflections are 0.5, 0.333 respectively for untwinned datasets, and 0.375, 0.2 for perfectly twinned datasets.

## 5 Model quality [i](#)

### 5.1 Standard geometry [i](#)

Bond lengths and bond angles in the following residue types are not validated in this section: P0E

The Z score for a bond length (or angle) is the number of standard deviations the observed value is removed from the expected value. A bond length (or angle) with  $|Z| > 5$  is considered an outlier worth inspection. RMSZ is the root-mean-square of all Z scores of the bond lengths (or angles).

Mol	Chain	Bond lengths		Bond angles	
		RMSZ	# $ Z  > 5$	RMSZ	# $ Z  > 5$
1	A	0.52	0/1811	0.66	1/2458 (0.0%)
2	B	0.68	0/72	0.87	0/95
All	All	0.53	0/1883	0.67	1/2553 (0.0%)

There are no bond length outliers.

All (1) bond angle outliers are listed below:

Mol	Chain	Res	Type	Atoms	Z	Observed( $^{\circ}$ )	Ideal( $^{\circ}$ )
1	A	259	PRO	N-CA-CB	5.26	109.61	103.30

There are no chirality outliers.

There are no planarity outliers.

### 5.2 Too-close contacts [i](#)

In the following table, the Non-H and H(model) columns list the number of non-hydrogen atoms and hydrogen atoms in the chain respectively. The H(added) column lists the number of hydrogen atoms added and optimized by MolProbity. The Clashes column lists the number of clashes within the asymmetric unit, whereas Symm-Clashes lists symmetry related clashes.

Mol	Chain	Non-H	H(model)	H(added)	Clashes	Symm-Clashes
1	A	1783	0	1755	101	0
2	B	73	0	83	17	0
3	A	46	0	67	11	0
4	A	94	0	0	10	0
4	B	2	0	0	0	0
All	All	1998	0	1905	115	0

The all-atom clashscore is defined as the number of clashes found per 1000 atoms (including

hydrogen atoms). The all-atom clashscore for this structure is 30.

All (115) close contacts within the same asymmetric unit are listed below, sorted by their clash magnitude.

Atom-1	Atom-2	Interatomic distance (Å)	Clash overlap (Å)
2:B:600:ALA:O	2:B:604:LEU:HB3	1.60	1.00
2:B:601:LEU:O	2:B:605:LEU:HB2	1.65	0.96
1:A:384:LEU:HD13	1:A:390:VAL:HG21	1.49	0.93
1:A:241:ARG:O	1:A:245:LEU:HB2	1.84	0.78
1:A:448:ARG:HD2	4:A:29:HOH:O	1.84	0.77
1:A:402:LEU:HB2	4:A:97:HOH:O	1.86	0.75
1:A:230:LEU:HD13	1:A:284:MET:HE3	1.70	0.74
1:A:411:HIS:HD2	4:A:84:HOH:O	1.71	0.72
2:B:598:ALA:O	2:B:602:ALA:HB3	1.89	0.72
1:A:307:VAL:HG23	3:A:201:P0E:H401	1.71	0.72
1:A:384:LEU:CD1	1:A:390:VAL:HG21	2.21	0.70
2:B:603:ALA:O	2:B:607:LYS:HB2	1.90	0.70
1:A:380:ASP:OD1	1:A:382:LYS:HG2	1.92	0.70
2:B:601:LEU:O	2:B:605:LEU:CB	2.41	0.69
1:A:230:LEU:HD21	1:A:373:PHE:HB2	1.74	0.69
2:B:598:ALA:HB3	2:B:601:LEU:HB2	1.77	0.67
1:A:284:MET:O	1:A:287:LYS:HG2	1.93	0.67
3:A:201:P0E:H261	3:A:201:P0E:H152	1.77	0.66
1:A:401:LEU:O	1:A:405:THR:HB	1.96	0.66
1:A:273:PHE:O	1:A:277:VAL:HG23	1.95	0.66
1:A:314:GLN:HE22	1:A:324:LEU:H	1.42	0.66
1:A:280:ALA:O	1:A:286:PHE:HD2	1.77	0.66
1:A:376:LEU:HD23	4:A:101:HOH:O	1.94	0.65
1:A:403:ASP:O	1:A:407:CYS:HB2	1.96	0.65
1:A:311:ILE:HD12	1:A:354:LEU:HD23	1.79	0.64
1:A:374:ILE:HG12	1:A:397:ALA:HB1	1.79	0.64
1:A:410:PRO:HG3	4:A:25:HOH:O	1.98	0.64
1:A:277:VAL:O	1:A:280:ALA:N	2.34	0.61
1:A:350:ARG:NH1	1:A:432:GLN:OE1	2.33	0.61
1:A:317:HIS:CD2	1:A:324:LEU:HB2	2.35	0.60
1:A:225:GLU:HB3	4:A:65:HOH:O	2.01	0.60
1:A:280:ALA:O	1:A:283:CYS:HB2	2.02	0.59
1:A:347:LEU:HD21	1:A:433:ALA:HA	1.84	0.58
1:A:317:HIS:CE1	1:A:319:LYS:HB2	2.39	0.58
1:A:280:ALA:O	1:A:286:PHE:CD2	2.58	0.57
1:A:241:ARG:HD3	1:A:327:THR:O	2.05	0.56
1:A:344:LEU:CD2	3:A:201:P0E:H151	2.36	0.56
1:A:352:GLN:HE21	1:A:352:GLN:N	2.05	0.55

*Continued on next page...*



*Continued from previous page...*

Atom-1	Atom-2	Interatomic distance (Å)	Clash overlap (Å)
1:A:236:ASP:OD1	1:A:238:ASP:HB2	2.06	0.55
1:A:268:MET:SD	1:A:327:THR:HG23	2.47	0.54
1:A:347:LEU:HD13	1:A:432:GLN:HB3	1.88	0.54
1:A:364:ASP:HB2	4:A:92:HOH:O	2.09	0.53
1:A:286:PHE:HA	1:A:289:LEU:HD12	1.90	0.53
1:A:307:VAL:HG23	3:A:201:P0E:C40	2.38	0.53
2:B:598:ALA:O	2:B:602:ALA:CB	2.55	0.53
1:A:241:ARG:HG2	1:A:245:LEU:HD12	1.91	0.53
1:A:405:THR:HG22	1:A:406:LEU:N	2.24	0.52
1:A:438:TYR:HB2	1:A:456:LEU:HD21	1.89	0.52
2:B:600:ALA:C	2:B:604:LEU:HB3	2.28	0.52
1:A:270:ASP:OD1	1:A:452:LEU:HG	2.10	0.52
1:A:285:VAL:HG13	1:A:377:PHE:CZ	2.45	0.52
1:A:295:MET:CE	2:B:598:ALA:N	2.73	0.52
1:A:374:ILE:CG1	1:A:397:ALA:HB1	2.39	0.52
1:A:294:GLN:HE22	2:B:605:LEU:HD21	1.75	0.51
2:B:603:ALA:HA	2:B:607:LYS:CE	2.40	0.51
1:A:233:LEU:HD12	1:A:284:MET:HE3	1.92	0.51
1:A:310:HIS:ND1	3:A:201:P0E:H461	2.25	0.51
1:A:344:LEU:HD22	3:A:201:P0E:H151	1.92	0.51
1:A:364:ASP:OD1	1:A:367:GLU:HG3	2.10	0.51
1:A:380:ASP:HB3	1:A:383:PHE:HD1	1.77	0.50
1:A:361:LEU:O	1:A:415:LYS:HE3	2.12	0.50
2:B:603:ALA:HA	2:B:607:LYS:HE3	1.93	0.50
1:A:373:PHE:CE1	1:A:377:PHE:HE2	2.30	0.50
1:A:276:ILE:HD12	1:A:306:LEU:HD23	1.94	0.49
1:A:361:LEU:O	1:A:362:GLN:HB2	2.13	0.48
1:A:421:LEU:O	1:A:424:VAL:HG22	2.13	0.48
1:A:433:ALA:HB3	3:A:201:P0E:H413	1.96	0.47
1:A:379:LEU:HD12	1:A:380:ASP:H	1.78	0.47
1:A:303:SER:HB2	3:A:201:P0E:H411	1.96	0.47
1:A:402:LEU:HD23	4:A:86:HOH:O	2.13	0.47
2:B:603:ALA:HA	2:B:607:LYS:HG3	1.97	0.47
1:A:374:ILE:HG12	1:A:397:ALA:CB	2.43	0.46
2:B:603:ALA:HA	2:B:607:LYS:CD	2.45	0.46
1:A:436:TYR:O	1:A:439:HIS:HB3	2.15	0.46
1:A:226:LEU:O	1:A:230:LEU:HB2	2.16	0.46
1:A:453:ILE:N	1:A:453:ILE:HD13	2.29	0.46
1:A:455:MET:CE	2:B:601:LEU:HD11	2.45	0.46
1:A:264:LEU:HD23	1:A:264:LEU:C	2.36	0.46
1:A:440:LYS:HD3	1:A:440:LYS:HA	1.70	0.45

*Continued on next page...*

*Continued from previous page...*

Atom-1	Atom-2	Interatomic distance (Å)	Clash overlap (Å)
1:A:284:MET:HB2	1:A:285:VAL:H	1.59	0.45
1:A:230:LEU:HG	1:A:369:VAL:HG13	1.99	0.45
1:A:408:HIS:C	1:A:410:PRO:HD3	2.37	0.45
1:A:324:LEU:HD12	1:A:329:GLN:O	2.16	0.45
1:A:283:CYS:HB3	1:A:286:PHE:HB3	1.98	0.45
1:A:386:ASN:ND2	1:A:389:LEU:HD23	2.32	0.44
1:A:230:LEU:N	1:A:284:MET:HE1	2.33	0.44
1:A:297:LEU:HD23	1:A:297:LEU:HA	1.77	0.43
1:A:332:GLU:HB2	1:A:335:THR:OG1	2.19	0.43
1:A:277:VAL:C	1:A:279:TRP:N	2.70	0.43
1:A:294:GLN:NE2	2:B:605:LEU:HD21	2.34	0.43
1:A:236:ASP:HB3	1:A:239:GLN:HB2	2.01	0.43
1:A:358:LEU:HD22	1:A:363:LEU:HD22	2.01	0.42
1:A:405:THR:CG2	1:A:406:LEU:N	2.81	0.42
1:A:236:ASP:O	1:A:239:GLN:HB3	2.18	0.42
1:A:347:LEU:CD1	1:A:432:GLN:HB3	2.49	0.42
1:A:307:VAL:HG23	3:A:201:P0E:C41	2.49	0.42
1:A:361:LEU:O	1:A:415:LYS:NZ	2.51	0.42
1:A:290:GLU:O	1:A:294:GLN:HG3	2.20	0.42
1:A:279:TRP:CZ3	1:A:376:LEU:HD22	2.55	0.42
1:A:291:VAL:O	1:A:295:MET:HG2	2.20	0.42
1:A:301:CYS:SG	1:A:305:LEU:HD11	2.59	0.42
1:A:306:LEU:HD13	3:A:201:P0E:H381	2.02	0.42
1:A:380:ASP:CG	1:A:382:LYS:HG2	2.40	0.42
1:A:303:SER:HB2	3:A:201:P0E:C41	2.50	0.41
1:A:409:TYR:CE1	1:A:415:LYS:NZ	2.87	0.41
2:B:601:LEU:HA	2:B:601:LEU:HD23	1.91	0.41
1:A:386:ASN:ND2	1:A:389:LEU:CD2	2.83	0.41
1:A:376:LEU:HB3	4:A:101:HOH:O	2.19	0.41
1:A:402:LEU:CB	4:A:97:HOH:O	2.57	0.41
1:A:371:LEU:CD2	1:A:423:LEU:HD11	2.51	0.41
1:A:416:PHE:O	1:A:420:LEU:HG	2.21	0.40
1:A:286:PHE:O	1:A:289:LEU:HB2	2.21	0.40
1:A:309:ASP:OD2	1:A:313:ARG:NH2	2.54	0.40
1:A:344:LEU:O	1:A:345:HIS:C	2.59	0.40
1:A:230:LEU:HG	1:A:369:VAL:CG1	2.51	0.40

There are no symmetry-related clashes.

## 5.3 Torsion angles [i](#)

### 5.3.1 Protein backbone [i](#)

In the following table, the Percentiles column shows the percent Ramachandran outliers of the chain as a percentile score with respect to all X-ray entries followed by that with respect to entries of similar resolution.

The Analysed column shows the number of residues for which the backbone conformation was analysed, and the total number of residues.

Mol	Chain	Analysed	Favoured	Allowed	Outliers	Percentiles	
1	A	226/242 (93%)	209 (92%)	13 (6%)	4 (2%)	8	37
2	B	9/11 (82%)	7 (78%)	1 (11%)	1 (11%)	0	2
All	All	235/253 (93%)	216 (92%)	14 (6%)	5 (2%)	7	33

All (5) Ramachandran outliers are listed below:

Mol	Chain	Res	Type
1	A	284	MET
1	A	387	HIS
2	B	605	LEU
1	A	328	GLY
1	A	327	THR

### 5.3.2 Protein sidechains [i](#)

In the following table, the Percentiles column shows the percent sidechain outliers of the chain as a percentile score with respect to all X-ray entries followed by that with respect to entries of similar resolution.

The Analysed column shows the number of residues for which the sidechain conformation was analysed, and the total number of residues.

Mol	Chain	Analysed	Rotameric	Outliers	Percentiles	
1	A	188/216 (87%)	170 (90%)	18 (10%)	8	32
2	B	5/5 (100%)	4 (80%)	1 (20%)	1	7
All	All	193/221 (87%)	174 (90%)	19 (10%)	8	30

All (19) residues with a non-rotameric sidechain are listed below:

Mol	Chain	Res	Type
1	A	247	CYS

*Continued on next page...*

*Continued from previous page...*

Mol	Chain	Res	Type
1	A	283	CYS
1	A	284	MET
1	A	313	ARG
1	A	334	THR
1	A	335	THR
1	A	352	GLN
1	A	357	GLN
1	A	387	HIS
1	A	388	ILE
1	A	391	LYS
1	A	403	ASP
1	A	405	THR
1	A	410	PRO
1	A	425	GLU
1	A	444	ASN
1	A	445	GLU
1	A	448	ARG
2	B	599	GLN

Some sidechains can be flipped to improve hydrogen bonding and reduce clashes. All (10) such sidechains are listed below:

Mol	Chain	Res	Type
1	A	294	GLN
1	A	299	GLN
1	A	314	GLN
1	A	317	HIS
1	A	352	GLN
1	A	357	GLN
1	A	362	GLN
1	A	386	ASN
1	A	418	GLN
1	A	457	GLN

### 5.3.3 RNA [i](#)

There are no RNA molecules in this entry.

## 5.4 Non-standard residues in protein, DNA, RNA chains [i](#)

There are no non-standard protein/DNA/RNA residues in this entry.

## 5.5 Carbohydrates [i](#)

There are no carbohydrates in this entry.

## 5.6 Ligand geometry [i](#)

1 ligand is modelled in this entry.

In the following table, the Counts columns list the number of bonds (or angles) for which Mogul statistics could be retrieved, the number of bonds (or angles) that are observed in the model and the number of bonds (or angles) that are defined in the Chemical Component Dictionary. The Link column lists molecule types, if any, to which the group is linked. The Z score for a bond length (or angle) is the number of standard deviations the observed value is removed from the expected value. A bond length (or angle) with  $|Z| > 2$  is considered an outlier worth inspection. RMSZ is the root-mean-square of all Z scores of the bond lengths (or angles).

Mol	Type	Chain	Res	Link	Bond lengths			Bond angles		
					Counts	RMSZ	# Z  > 2	Counts	RMSZ	# Z  > 2
3	P0E	A	201	-	45,45,48	0.98	3 (6%)	49,50,53	1.06	6 (12%)

In the following table, the Chirals column lists the number of chiral outliers, the number of chiral centers analysed, the number of these observed in the model and the number defined in the Chemical Component Dictionary. Similar counts are reported in the Torsion and Rings columns. '-' means no outliers of that kind were identified.

Mol	Type	Chain	Res	Link	Chirals	Torsions	Rings
3	P0E	A	201	-	-	22/47/47/52	-

All (3) bond length outliers are listed below:

Mol	Chain	Res	Type	Atoms	Z	Observed(Å)	Ideal(Å)
3	A	201	P0E	P8-O7	3.00	1.60	1.50
3	A	201	P0E	O1-C11	2.87	1.42	1.34
3	A	201	P0E	P8-O9	2.28	1.63	1.54

All (6) bond angle outliers are listed below:

Mol	Chain	Res	Type	Atoms	Z	Observed(°)	Ideal(°)
3	A	201	P0E	C2-O1-C11	4.00	127.65	117.79
3	A	201	P0E	C16-C15-C11	2.68	123.37	113.62
3	A	201	P0E	C17-C16-C15	2.36	121.68	113.19
3	A	201	P0E	P8-O6-C4	2.33	124.72	118.30
3	A	201	P0E	O1-C11-C15	2.31	116.48	111.50
3	A	201	P0E	O9-P8-O6	2.05	112.19	106.73

There are no chirality outliers.

All (22) torsion outliers are listed below:

Mol	Chain	Res	Type	Atoms
3	A	201	P0E	O12-C11-O1-C2
3	A	201	P0E	C15-C11-O1-C2
3	A	201	P0E	C4-O6-P8-O7
3	A	201	P0E	C4-O6-P8-O9
3	A	201	P0E	C4-O6-P8-O10
3	A	201	P0E	C11-C15-C16-C17
3	A	201	P0E	C18-C19-C20-C21
3	A	201	P0E	C42-C43-C44-C45
3	A	201	P0E	C19-C20-C21-C22
3	A	201	P0E	C27-C28-C29-C30
3	A	201	P0E	C32-C33-C35-C36
3	A	201	P0E	C17-C18-C19-C20
3	A	201	P0E	C24-C25-C26-C27
3	A	201	P0E	C3-C2-C4-O6
3	A	201	P0E	C23-C34-C42-C43
3	A	201	P0E	C22-C23-C34-C42
3	A	201	P0E	C33-C35-C36-C37
3	A	201	P0E	C28-C29-C30-C31
3	A	201	P0E	O1-C2-C4-O6
3	A	201	P0E	C31-C32-C33-C35
3	A	201	P0E	C20-C21-C22-C23
3	A	201	P0E	O5-C13-C24-C25

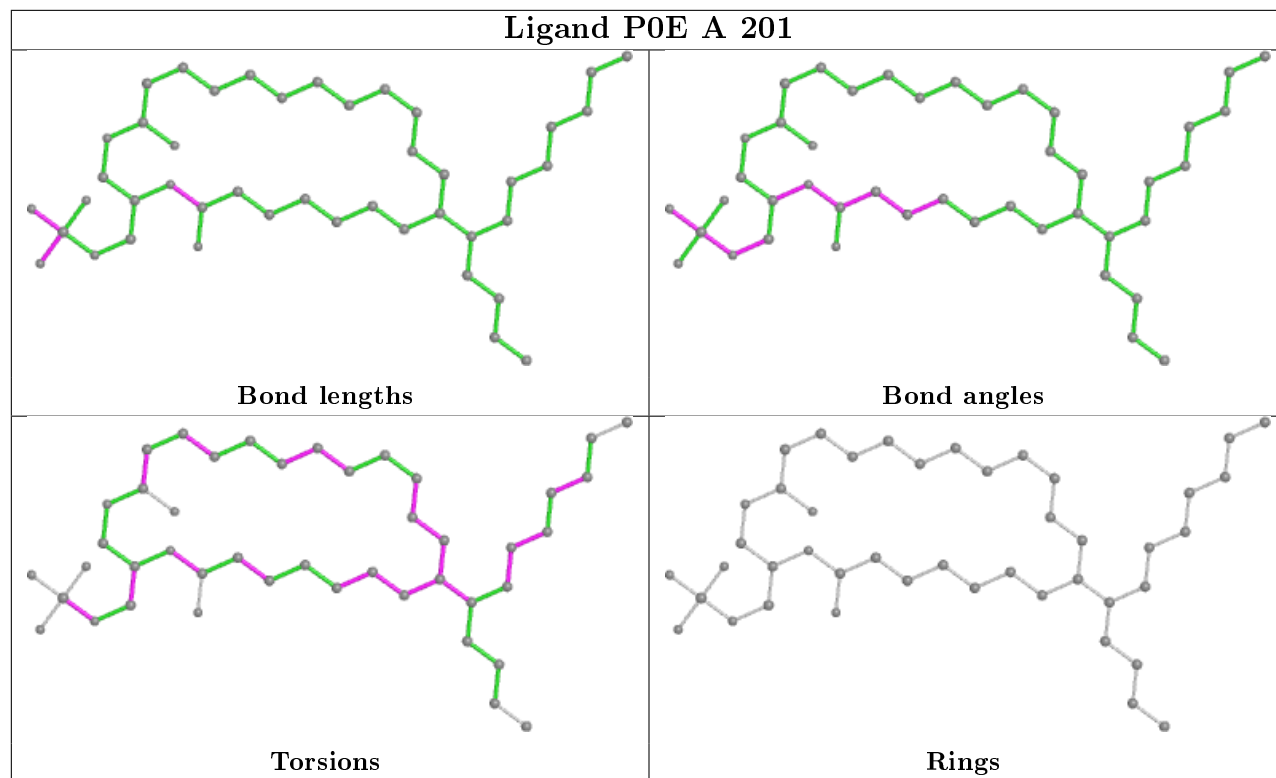
There are no ring outliers.

1 monomer is involved in 11 short contacts:

Mol	Chain	Res	Type	Clashes	Symm-Clashes
3	A	201	P0E	11	0

The following is a two-dimensional graphical depiction of Mogul quality analysis of bond lengths, bond angles, torsion angles, and ring geometry for all instances of the Ligand of Interest. In addition, ligands with molecular weight > 250 and outliers as shown on the validation Tables will also be included. For torsion angles, if less than 5% of the Mogul distribution of torsion angles is within 10 degrees of the torsion angle in question, then that torsion angle is considered an outlier. Any bond that is central to one or more torsion angles identified as an outlier by Mogul will be highlighted in the graph. For rings, the root-mean-square deviation (RMSD) between the ring in question and similar rings identified by Mogul is calculated over all ring torsion angles. If the average RMSD is greater than 60 degrees and the minimal RMSD between the ring in question and any Mogul-identified rings is also greater than 60 degrees, then that ring is considered an outlier. The outliers are highlighted in purple. The color gray indicates Mogul did not find sufficient

equivalents in the CSD to analyse the geometry.



## 5.7 Other polymers [i](#)

There are no such residues in this entry.

## 5.8 Polymer linkage issues [i](#)

There are no chain breaks in this entry.

## 6 Fit of model and data [i](#)

### 6.1 Protein, DNA and RNA chains [i](#)

In the following table, the column labelled '#RSRZ > 2' contains the number (and percentage) of RSRZ outliers, followed by percent RSRZ outliers for the chain as percentile scores relative to all X-ray entries and entries of similar resolution. The OWAB column contains the minimum, median, 95<sup>th</sup> percentile and maximum values of the occupancy-weighted average B-factor per residue. The column labelled 'Q < 0.9' lists the number of (and percentage) of residues with an average occupancy less than 0.9.

Mol	Chain	Analysed	<RSRZ>	#RSRZ>2	OWAB(Å <sup>2</sup> )	Q<0.9
1	A	230/242 (95%)	-0.48	1 (0%) 92 79	60, 83, 110, 110	0
2	B	11/11 (100%)	0.36	0 100 100	91, 93, 95, 96	11 (100%)
All	All	241/253 (95%)	-0.45	1 (0%) 92 79	60, 84, 110, 110	11 (4%)

All (1) RSRZ outliers are listed below:

Mol	Chain	Res	Type	RSRZ
1	A	383	PHE	2.1

### 6.2 Non-standard residues in protein, DNA, RNA chains [i](#)

There are no non-standard protein/DNA/RNA residues in this entry.

### 6.3 Carbohydrates [i](#)

There are no carbohydrates in this entry.

### 6.4 Ligands [i](#)

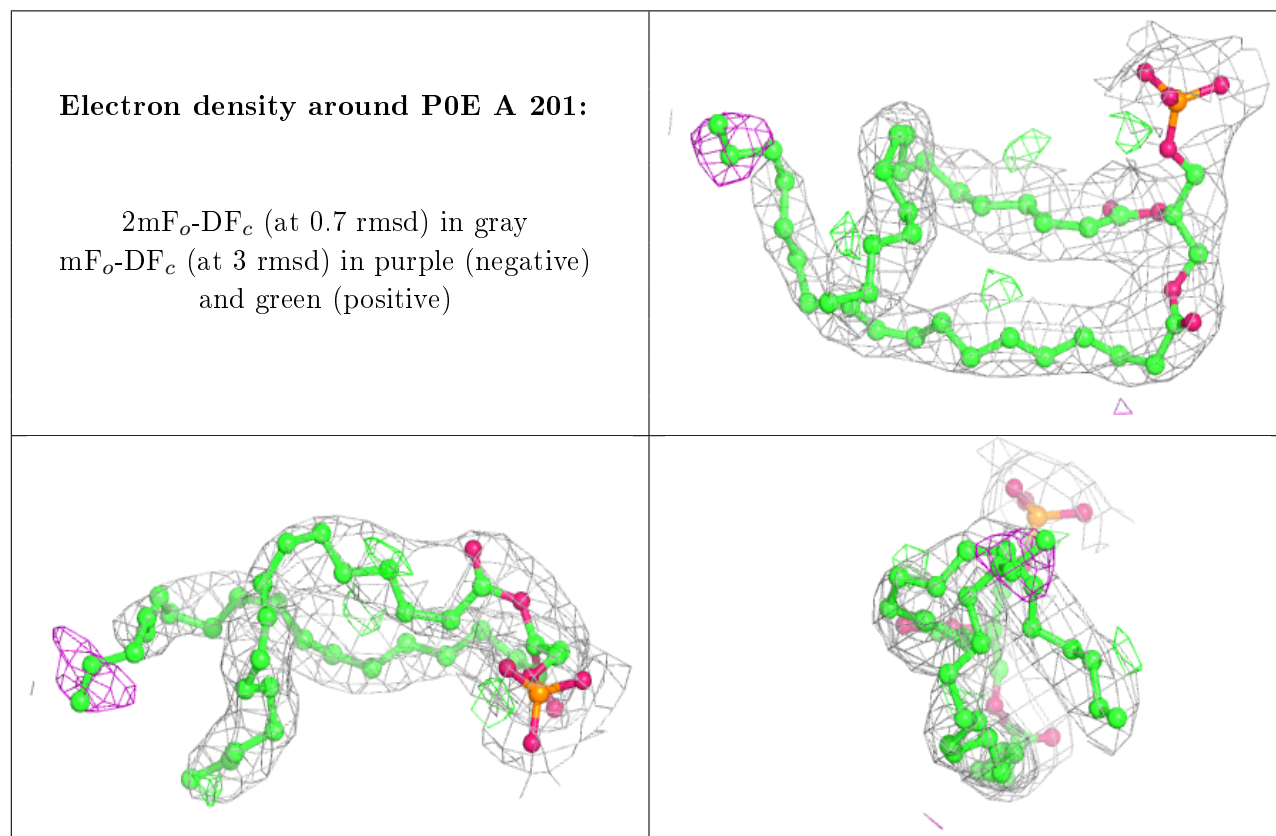
In the following table, the Atoms column lists the number of modelled atoms in the group and the number defined in the chemical component dictionary. The B-factors column lists the minimum, median, 95<sup>th</sup> percentile and maximum values of B factors of atoms in the group. The column labelled 'Q < 0.9' lists the number of atoms with occupancy less than 0.9.

Mol	Type	Chain	Res	Atoms	RSCC	RSR	B-factors(Å <sup>2</sup> )	Q<0.9
3	P0E	A	201	46/49	0.90	0.28	63,77,91,102	0

The following is a graphical depiction of the model fit to experimental electron density of all instances of the Ligand of Interest. In addition, ligands with molecular weight > 250 and outliers



as shown on the geometry validation Tables will also be included. Each fit is shown from different orientation to approximate a three-dimensional view.



## 6.5 Other polymers [i](#)

There are no such residues in this entry.