



Full wwPDB X-ray Structure Validation Report ⓘ

Oct 21, 2024 – 08:51 AM EDT

PDB ID : 1YS4
Title : Structure of Aspartate-Semialdehyde Dehydrogenase from *Methanococcus jannaschii*
Authors : Faehnle, C.R.; Ohren, J.F.; Viola, R.E.
Deposited on : 2005-02-07
Resolution : 2.29 Å (reported)

This is a Full wwPDB X-ray Structure Validation Report for a publicly released PDB entry.

We welcome your comments at validation@mail.wwpdb.org

A user guide is available at

<https://www.wwpdb.org/validation/2017/XrayValidationReportHelp>

with specific help available everywhere you see the ⓘ symbol.

The types of validation reports are described at

<http://www.wwpdb.org/validation/2017/FAQs#types>.

The following versions of software and data (see [references ⓘ](#)) were used in the production of this report:

MolProbity : 4.02b-467
Mogul : 2022.3.0, CSD as543be (2022)
Xtriage (Phenix) : 1.20.1
EDS : 3.0
buster-report : 1.1.7 (2018)
Percentile statistics : 20231227.v01 (using entries in the PDB archive December 27th 2023)
CCP4 : 9.0.003 (Gargrove)
Density-Fitness : 1.0.11
Ideal geometry (proteins) : Engh & Huber (2001)
Ideal geometry (DNA, RNA) : Parkinson et al. (1996)
Validation Pipeline (wwPDB-VP) : 2.39

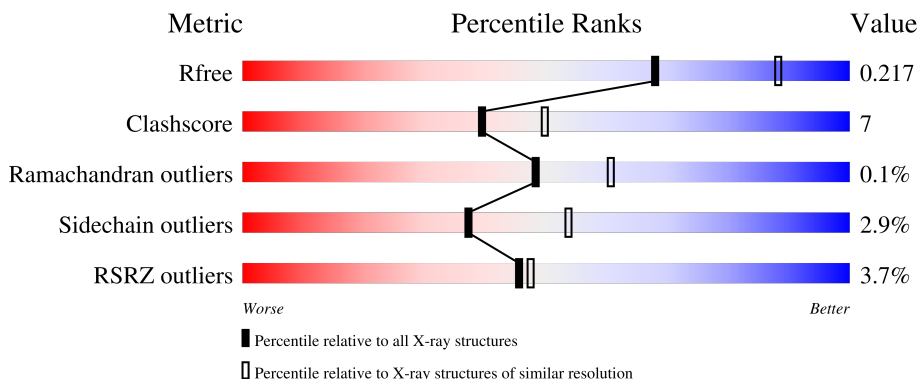
1 Overall quality at a glance

The following experimental techniques were used to determine the structure:

X-RAY DIFFRACTION

The reported resolution of this entry is 2.29 Å.

Percentile scores (ranging between 0-100) for global validation metrics of the entry are shown in the following graphic. The table shows the number of entries on which the scores are based.



Metric	Whole archive (#Entries)	Similar resolution (#Entries, resolution range(Å))
R_{free}	164625	5963 (2.30-2.30)
Clashscore	180529	6698 (2.30-2.30)
Ramachandran outliers	177936	6640 (2.30-2.30)
Sidechain outliers	177891	6640 (2.30-2.30)
RSRZ outliers	164620	5963 (2.30-2.30)

The table below summarises the geometric issues observed across the polymeric chains and their fit to the electron density. The red, orange, yellow and green segments of the lower bar indicate the fraction of residues that contain outliers for ≥ 3 , 2, 1 and 0 types of geometric quality criteria respectively. A grey segment represents the fraction of residues that are not modelled. The numeric value for each fraction is indicated below the corresponding segment, with a dot representing fractions $\leq 5\%$. The upper red bar (where present) indicates the fraction of residues that have poor fit to the electron density. The numeric value is given above the bar.

Mol	Chain	Length	Quality of chain
1	A	354	 3% 87% 11% .
1	B	354	 4% 85% 12% ..

The following table lists non-polymeric compounds, carbohydrate monomers and non-standard residues in protein, DNA, RNA chains that are outliers for geometric or electron-density-fit criteria:

Mol	Type	Chain	Res	Chirality	Geometry	Clashes	Electron density
2	NAP	A	900	X	-	-	-
2	NAP	B	901	X	-	-	-
3	MLA	B	902	-	-	-	X

2 Entry composition [i](#)

There are 4 unique types of molecules in this entry. The entry contains 6003 atoms, of which 0 are hydrogens and 0 are deuteriums.

In the tables below, the ZeroOcc column contains the number of atoms modelled with zero occupancy, the AltConf column contains the number of residues with at least one atom in alternate conformation and the Trace column contains the number of residues modelled with at most 2 atoms.

- Molecule 1 is a protein called Aspartate-semialdehyde dehydrogenase.

Mol	Chain	Residues	Atoms						ZeroOcc	AltConf	Trace
			Total	C	N	O	S	Se			
1	A	348	2725	1738	454	519	4	10	0	0	0
1	B	348	2725	1738	454	519	4	10	0	0	0

There are 20 discrepancies between the modelled and reference sequences:

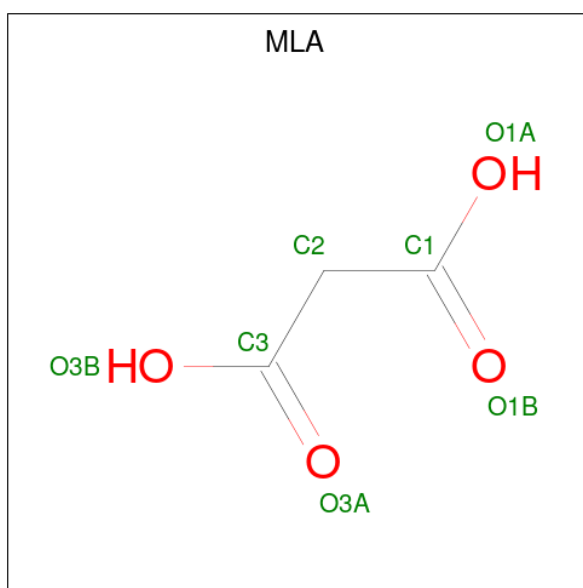
Chain	Residue	Modelled	Actual	Comment	Reference
A	7	MSE	MET	modified residue	UNP Q57658
A	33	MSE	MET	modified residue	UNP Q57658
A	69	MSE	MET	modified residue	UNP Q57658
A	119	MSE	MET	modified residue	UNP Q57658
A	170	MSE	MET	modified residue	UNP Q57658
A	183	MSE	MET	modified residue	UNP Q57658
A	197	MSE	MET	modified residue	UNP Q57658
A	214	MSE	MET	modified residue	UNP Q57658
A	271	MSE	MET	modified residue	UNP Q57658
A	310	MSE	MET	modified residue	UNP Q57658
B	7	MSE	MET	modified residue	UNP Q57658
B	33	MSE	MET	modified residue	UNP Q57658
B	69	MSE	MET	modified residue	UNP Q57658
B	119	MSE	MET	modified residue	UNP Q57658
B	170	MSE	MET	modified residue	UNP Q57658
B	183	MSE	MET	modified residue	UNP Q57658
B	197	MSE	MET	modified residue	UNP Q57658
B	214	MSE	MET	modified residue	UNP Q57658
B	271	MSE	MET	modified residue	UNP Q57658
B	310	MSE	MET	modified residue	UNP Q57658

- Molecule 2 is NADP NICOTINAMIDE-ADENINE-DINUCLEOTIDE PHOSPHATE (three-letter code: NAP) (formula: C₂₁H₂₈N₇O₁₇P₃).



Mol	Chain	Residues	Atoms				ZeroOcc	AltConf	
			Total	C	N	O			P
2	A	1	48	21	7	17	3	0	0
2	B	1	48	21	7	17	3	0	0

- Molecule 3 is MALONIC ACID (three-letter code: MLA) (formula: $C_3H_4O_4$).



Mol	Chain	Residues	Atoms			ZeroOcc	AltConf
			Total	C	O		
3	A	1	7	3	4	0	0
3	A	1	7	3	4	0	0

Continued on next page...

Continued from previous page...

Mol	Chain	Residues	Atoms			ZeroOcc	AltConf
3	B	1	Total	C	O	0	0
			7	3	4		
3	B	1	Total	C	O	0	0
			7	3	4		

- Molecule 4 is water.

Mol	Chain	Residues	Atoms		ZeroOcc	AltConf
4	A	206	Total	O	0	0
			206	206		
4	B	223	Total	O	0	0
			223	223		

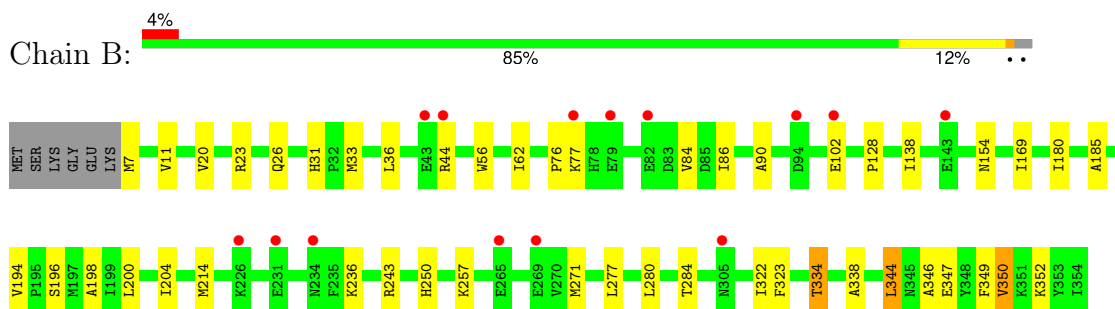
3 Residue-property plots [i](#)

These plots are drawn for all protein, RNA, DNA and oligosaccharide chains in the entry. The first graphic for a chain summarises the proportions of the various outlier classes displayed in the second graphic. The second graphic shows the sequence view annotated by issues in geometry and electron density. Residues are color-coded according to the number of geometric quality criteria for which they contain at least one outlier: green = 0, yellow = 1, orange = 2 and red = 3 or more. A red dot above a residue indicates a poor fit to the electron density ($RSRZ > 2$). Stretches of 2 or more consecutive residues without any outlier are shown as a green connector. Residues present in the sample, but not in the model, are shown in grey.

- Molecule 1: Aspartate-semialdehyde dehydrogenase



- Molecule 1: Aspartate-semialdehyde dehydrogenase



4 Data and refinement statistics

Property	Value	Source
Space group	P 43 21 2	Depositor
Cell constants a, b, c, α , β , γ	95.25Å 95.25Å 297.96Å 90.00° 90.00° 90.00°	Depositor
Resolution (Å)	39.22 – 2.29 39.22 – 2.29	Depositor EDS
% Data completeness (in resolution range)	99.2 (39.22-2.29) 99.2 (39.22-2.29)	Depositor EDS
R_{merge}	(Not available)	Depositor
R_{sym}	(Not available)	Depositor
$\langle I/\sigma(I) \rangle$ ¹	5.98 (at 2.29Å)	Xtrriage
Refinement program	REFMAC	Depositor
R, R_{free}	0.191 , 0.221 0.191 , 0.217	Depositor DCC
R_{free} test set	3145 reflections (5.07%)	wwPDB-VP
Wilson B-factor (Å ²)	35.6	Xtrriage
Anisotropy	0.001	Xtrriage
Bulk solvent k_{sol} (e/Å ³), B_{sol} (Å ²)	0.40 , 40.3	EDS
L-test for twinning ²	$\langle L \rangle = 0.49$, $\langle L^2 \rangle = 0.32$	Xtrriage
Estimated twinning fraction	No twinning to report.	Xtrriage
F_o, F_c correlation	0.95	EDS
Total number of atoms	6003	wwPDB-VP
Average B, all atoms (Å ²)	36.0	wwPDB-VP

Xtrriage's analysis on translational NCS is as follows: *The largest off-origin peak in the Patterson function is 3.60% of the height of the origin peak. No significant pseudotranslation is detected.*

¹Intensities estimated from amplitudes.

²Theoretical values of $\langle |L| \rangle$, $\langle L^2 \rangle$ for acentric reflections are 0.5, 0.333 respectively for untwinned datasets, and 0.375, 0.2 for perfectly twinned datasets.

5 Model quality

5.1 Standard geometry

Bond lengths and bond angles in the following residue types are not validated in this section: MLA, NAP

The Z score for a bond length (or angle) is the number of standard deviations the observed value is removed from the expected value. A bond length (or angle) with $|Z| > 5$ is considered an outlier worth inspection. RMSZ is the root-mean-square of all Z scores of the bond lengths (or angles).

Mol	Chain	Bond lengths		Bond angles	
		RMSZ	# Z >5	RMSZ	# Z >5
1	A	0.35	0/2767	0.51	0/3722
1	B	0.35	0/2767	0.51	0/3722
All	All	0.35	0/5534	0.51	0/7444

There are no bond length outliers.

There are no bond angle outliers.

There are no chirality outliers.

There are no planarity outliers.

5.2 Too-close contacts

In the following table, the Non-H and H(model) columns list the number of non-hydrogen atoms and hydrogen atoms in the chain respectively. The H(added) column lists the number of hydrogen atoms added and optimized by MolProbity. The Clashes column lists the number of clashes within the asymmetric unit, whereas Symm-Clashes lists symmetry-related clashes.

Mol	Chain	Non-H	H(model)	H(added)	Clashes	Symm-Clashes
1	A	2725	0	2756	28	0
1	B	2725	0	2756	41	0
2	A	48	0	25	11	0
2	B	48	0	25	9	0
3	A	14	0	4	3	0
3	B	14	0	4	1	0
4	A	206	0	0	3	0
4	B	223	0	0	2	0
All	All	6003	0	5570	73	0

The all-atom clashscore is defined as the number of clashes found per 1000 atoms (including hydrogen atoms). The all-atom clashscore for this structure is 7.

All (73) close contacts within the same asymmetric unit are listed below, sorted by their clash magnitude.

Atom-1	Atom-2	Interatomic distance (Å)	Clash overlap (Å)
1:B:23:ARG:HG3	1:B:334:THR:HG23	1.37	1.02
1:B:23:ARG:HG3	1:B:334:THR:CG2	1.90	1.00
1:A:188:GLY:HA2	2:A:900:NAP:C7N	2.03	0.88
1:B:20:VAL:HG23	4:B:1051:HOH:O	1.73	0.88
1:A:334:THR:HG22	2:A:900:NAP:O7N	1.77	0.84
1:A:188:GLY:HA2	2:A:900:NAP:N7N	1.97	0.80
1:B:20:VAL:HG22	2:B:901:NAP:N7N	1.98	0.79
1:B:23:ARG:HH21	1:B:26:GLN:HE22	1.37	0.70
1:B:194:VAL:HG21	1:B:243:ARG:HD3	1.73	0.70
1:B:198:ALA:HB1	1:B:204:ILE:HD11	1.75	0.69
1:B:334:THR:HA	2:B:901:NAP:O7N	1.93	0.68
1:B:20:VAL:CG2	2:B:901:NAP:H2N	2.25	0.67
1:B:20:VAL:HG22	2:B:901:NAP:H71N	1.61	0.64
1:B:185:ALA:H	1:B:250:HIS:HD2	1.47	0.63
1:A:185:ALA:H	1:A:250:HIS:HD2	1.48	0.62
2:A:900:NAP:H5N	3:A:904:MLA:O3A	2.00	0.62
1:B:169:ILE:HD11	1:B:271:MSE:HE3	1.82	0.62
1:B:185:ALA:H	1:B:250:HIS:CD2	2.18	0.62
1:B:138:ILE:HD13	1:B:349:PHE:HE2	1.65	0.62
1:B:138:ILE:HD13	1:B:349:PHE:CE2	2.36	0.60
1:B:31:HIS:HD2	1:B:33:MSE:H	1.48	0.60
1:B:20:VAL:CG2	2:B:901:NAP:C2N	2.80	0.59
1:A:128:PRO:HB2	1:A:277:LEU:HD11	1.84	0.59
1:B:76:PRO:HG3	1:B:102:GLU:HB3	1.85	0.58
1:A:271:MSE:HE1	1:A:317:ILE:HD11	1.87	0.56
1:A:194:VAL:HG21	1:A:243:ARG:HD3	1.86	0.55
1:B:20:VAL:HG22	2:B:901:NAP:C2N	2.37	0.55
1:A:236:LYS:HB3	1:B:322:ILE:HG12	1.88	0.54
1:A:185:ALA:H	1:A:250:HIS:CD2	2.26	0.54
1:A:128:PRO:HG2	1:A:344:LEU:HD13	1.91	0.52
1:A:20:VAL:HG23	2:A:900:NAP:C2N	2.39	0.52
1:B:20:VAL:HG22	2:B:901:NAP:C7N	2.40	0.52
1:B:128:PRO:HB2	1:B:277:LEU:HD11	1.92	0.51
1:B:20:VAL:HG22	2:B:901:NAP:H2N	1.92	0.51
1:B:31:HIS:HE1	1:B:347:GLU:OE1	1.92	0.51
1:A:113:ASN:HD21	2:A:900:NAP:C5N	2.23	0.51
2:A:900:NAP:C5N	3:A:904:MLA:C3	2.90	0.50
2:B:901:NAP:H5N	3:B:902:MLA:O1B	2.11	0.50
1:B:128:PRO:HG2	1:B:344:LEU:HD13	1.95	0.49
1:B:346:ALA:O	1:B:350:VAL:HG13	2.12	0.49

Continued on next page...

Continued from previous page...

Atom-1	Atom-2	Interatomic distance (Å)	Clash overlap (Å)
1:B:31:HIS:CD2	1:B:33:MSE:H	2.30	0.48
1:A:78:HIS:HD2	1:A:80:GLU:H	1.62	0.47
1:B:180:ILE:HG21	1:B:214:MSE:HE1	1.96	0.47
1:B:56:TRP:CD2	1:B:62:ILE:HG12	2.48	0.47
1:A:271:MSE:HE1	1:A:317:ILE:CD1	2.45	0.47
2:A:900:NAP:H5N	3:A:904:MLA:C3	2.45	0.46
1:A:284:THR:HG22	1:A:284:THR:O	2.15	0.46
1:B:11:VAL:HG12	1:B:86:ILE:HB	1.97	0.46
1:B:23:ARG:HE	1:B:334:THR:HG21	1.79	0.46
1:B:284:THR:HG22	1:B:284:THR:O	2.16	0.46
1:A:7:MSE:HB3	1:A:33:MSE:HA	1.97	0.46
1:A:128:PRO:HG3	1:A:345:ASN:HD22	1.81	0.45
1:A:194:VAL:CG2	1:A:243:ARG:HD3	2.46	0.44
1:A:243:ARG:HD2	4:A:973:HOH:O	2.16	0.44
1:A:257:LYS:HB2	1:A:323:PHE:CG	2.53	0.44
1:B:20:VAL:HB	1:B:90:ALA:HB1	2.00	0.44
1:B:23:ARG:NH2	1:B:26:GLN:HE22	2.10	0.44
1:A:72:ILE:HD13	1:A:80:GLU:HB2	2.00	0.43
1:B:169:ILE:HD11	1:B:271:MSE:CE	2.47	0.43
1:B:31:HIS:CE1	1:B:347:GLU:OE1	2.70	0.43
1:A:113:ASN:HD21	2:A:900:NAP:C6N	2.31	0.43
1:A:97:LYS:HG3	1:A:116:ALA:HB1	2.01	0.43
1:A:56:TRP:CD2	1:A:62:ILE:HG12	2.54	0.43
2:A:900:NAP:H4N	4:A:986:HOH:O	2.18	0.42
1:B:243:ARG:HD2	4:B:916:HOH:O	2.17	0.42
1:A:180:ILE:HG21	1:A:214:MSE:HE1	2.01	0.42
1:B:198:ALA:HB1	1:B:204:ILE:CD1	2.47	0.42
1:B:257:LYS:HB2	1:B:323:PHE:CG	2.55	0.41
1:A:322:ILE:HG12	1:B:236:LYS:HB3	2.03	0.41
2:A:900:NAP:H2A	4:A:983:HOH:O	2.21	0.41
1:B:196:SER:O	1:B:200:LEU:HB2	2.21	0.41
1:A:196:SER:O	1:A:200:LEU:HB2	2.21	0.41
1:A:10:LYS:HG2	1:A:37:THR:HG21	2.03	0.40

There are no symmetry-related clashes.

5.3 Torsion angles [i](#)

5.3.1 Protein backbone [i](#)

In the following table, the Percentiles column shows the percent Ramachandran outliers of the chain as a percentile score with respect to all X-ray entries followed by that with respect to entries of similar resolution.

The Analysed column shows the number of residues for which the backbone conformation was analysed, and the total number of residues.

Mol	Chain	Analysed	Favoured	Allowed	Outliers	Percentiles	
1	A	346/354 (98%)	335 (97%)	11 (3%)	0	100	100
1	B	346/354 (98%)	337 (97%)	8 (2%)	1 (0%)	37	47
All	All	692/708 (98%)	672 (97%)	19 (3%)	1 (0%)	48	60

All (1) Ramachandran outliers are listed below:

Mol	Chain	Res	Type
1	B	338	ALA

5.3.2 Protein sidechains [i](#)

In the following table, the Percentiles column shows the percent sidechain outliers of the chain as a percentile score with respect to all X-ray entries followed by that with respect to entries of similar resolution.

The Analysed column shows the number of residues for which the sidechain conformation was analysed, and the total number of residues.

Mol	Chain	Analysed	Rotameric	Outliers	Percentiles	
1	A	297/292 (102%)	291 (98%)	6 (2%)	50	68
1	B	297/292 (102%)	286 (96%)	11 (4%)	29	43
All	All	594/584 (102%)	577 (97%)	17 (3%)	37	54

All (17) residues with a non-rotameric sidechain are listed below:

Mol	Chain	Res	Type
1	A	36	LEU
1	A	44	ARG
1	A	134	HIS
1	A	143	GLU
1	A	344	LEU

Continued on next page...

Continued from previous page...

Mol	Chain	Res	Type
1	A	350	VAL
1	B	7	MSE
1	B	36	LEU
1	B	44	ARG
1	B	77	LYS
1	B	84	VAL
1	B	154	ASN
1	B	280	LEU
1	B	334	THR
1	B	344	LEU
1	B	350	VAL
1	B	352	LYS

Sometimes sidechains can be flipped to improve hydrogen bonding and reduce clashes. All (10) such sidechains are listed below:

Mol	Chain	Res	Type
1	A	78	HIS
1	A	113	ASN
1	A	134	HIS
1	A	250	HIS
1	A	332	HIS
1	A	345	ASN
1	B	26	GLN
1	B	31	HIS
1	B	209	ASN
1	B	250	HIS

5.3.3 RNA [i](#)

There are no RNA molecules in this entry.

5.4 Non-standard residues in protein, DNA, RNA chains [i](#)

There are no non-standard protein/DNA/RNA residues in this entry.

5.5 Carbohydrates [i](#)

There are no oligosaccharides in this entry.

5.6 Ligand geometry

6 ligands are modelled in this entry.

In the following table, the Counts columns list the number of bonds (or angles) for which Mogul statistics could be retrieved, the number of bonds (or angles) that are observed in the model and the number of bonds (or angles) that are defined in the Chemical Component Dictionary. The Link column lists molecule types, if any, to which the group is linked. The Z score for a bond length (or angle) is the number of standard deviations the observed value is removed from the expected value. A bond length (or angle) with $|Z| > 2$ is considered an outlier worth inspection. RMSZ is the root-mean-square of all Z scores of the bond lengths (or angles).

Mol	Type	Chain	Res	Link	Bond lengths			Bond angles		
					Counts	RMSZ	# Z > 2	Counts	RMSZ	# Z > 2
2	NAP	B	901	-	46,52,52	1.43	4 (8%)	61,80,80	1.40	7 (11%)
3	MLA	A	903	-	6,6,6	1.11	0	7,7,7	1.21	0
3	MLA	B	902	-	6,6,6	1.16	0	7,7,7	0.92	0
3	MLA	A	904	-	6,6,6	1.12	0	7,7,7	0.88	0
3	MLA	B	905	-	6,6,6	1.16	0	7,7,7	0.81	0
2	NAP	A	900	-	46,52,52	1.42	6 (13%)	61,80,80	1.47	7 (11%)

In the following table, the Chirals column lists the number of chiral outliers, the number of chiral centers analysed, the number of these observed in the model and the number defined in the Chemical Component Dictionary. Similar counts are reported in the Torsion and Rings columns. '-' means no outliers of that kind were identified.

Mol	Type	Chain	Res	Link	Chirals	Torsions	Rings
2	NAP	B	901	-	2/2/12/12	13/31/67/67	0/5/5/5
3	MLA	A	903	-	-	3/4/4/4	-
3	MLA	B	902	-	-	0/4/4/4	-
3	MLA	A	904	-	-	2/4/4/4	-
3	MLA	B	905	-	-	2/4/4/4	-
2	NAP	A	900	-	1/1/12/12	10/31/67/67	0/5/5/5

All (10) bond length outliers are listed below:

Mol	Chain	Res	Type	Atoms	Z	Observed(Å)	Ideal(Å)
2	B	901	NAP	C4A-N3A	6.80	1.44	1.35
2	A	900	NAP	C4A-N3A	6.77	1.44	1.35
2	B	901	NAP	O4D-C1D	3.09	1.45	1.40
2	A	900	NAP	O4D-C1D	2.77	1.44	1.40
2	A	900	NAP	PA-O3	2.51	1.62	1.59
2	B	901	NAP	PA-O3	2.50	1.62	1.59
2	A	900	NAP	O4B-C1B	2.42	1.44	1.40

Continued on next page...

Continued from previous page...

Mol	Chain	Res	Type	Atoms	Z	Observed(Å)	Ideal(Å)
2	A	900	NAP	PN-O3	2.17	1.61	1.59
2	A	900	NAP	C2A-N3A	2.06	1.35	1.32
2	B	901	NAP	C2A-N3A	2.02	1.35	1.32

All (14) bond angle outliers are listed below:

Mol	Chain	Res	Type	Atoms	Z	Observed(°)	Ideal(°)
2	B	901	NAP	N3A-C2A-N1A	-4.03	123.20	128.67
2	A	900	NAP	N3A-C2A-N1A	-3.82	123.49	128.67
2	A	900	NAP	O4B-C1B-N9A	3.36	113.20	108.75
2	B	901	NAP	C4A-C5A-N7A	-3.34	105.81	109.34
2	A	900	NAP	C4A-C5A-N7A	-3.19	105.97	109.34
2	A	900	NAP	C2B-C1B-N9A	3.06	119.35	112.56
2	B	901	NAP	C3N-C7N-N7N	2.94	121.36	117.74
2	B	901	NAP	C6N-N1N-C2N	-2.88	119.42	121.88
2	A	900	NAP	C1B-N9A-C4A	2.76	131.50	126.64
2	B	901	NAP	C4B-O4B-C1B	2.38	112.11	109.92
2	B	901	NAP	C2B-C1B-N9A	2.33	117.73	112.56
2	B	901	NAP	C2D-C3D-C4D	2.24	106.93	102.61
2	A	900	NAP	C6N-N1N-C2N	-2.21	119.99	121.88
2	A	900	NAP	C2B-C3B-C4B	2.03	106.36	101.99

All (3) chirality outliers are listed below:

Mol	Chain	Res	Type	Atom
2	A	900	NAP	C1B
2	B	901	NAP	C3B
2	B	901	NAP	C1B

All (30) torsion outliers are listed below:

Mol	Chain	Res	Type	Atoms
2	A	900	NAP	PN-O3-PA-O5B
2	A	900	NAP	C5D-O5D-PN-O3
2	A	900	NAP	C5D-O5D-PN-O1N
2	A	900	NAP	C5D-O5D-PN-O2N
2	B	901	NAP	C5B-O5B-PA-O1A
2	B	901	NAP	C5B-O5B-PA-O3
2	B	901	NAP	O4B-C4B-C5B-O5B
2	B	901	NAP	C2D-C1D-N1N-C2N
2	B	901	NAP	C2D-C1D-N1N-C6N
2	B	901	NAP	C3B-C4B-C5B-O5B

Continued on next page...

Continued from previous page...

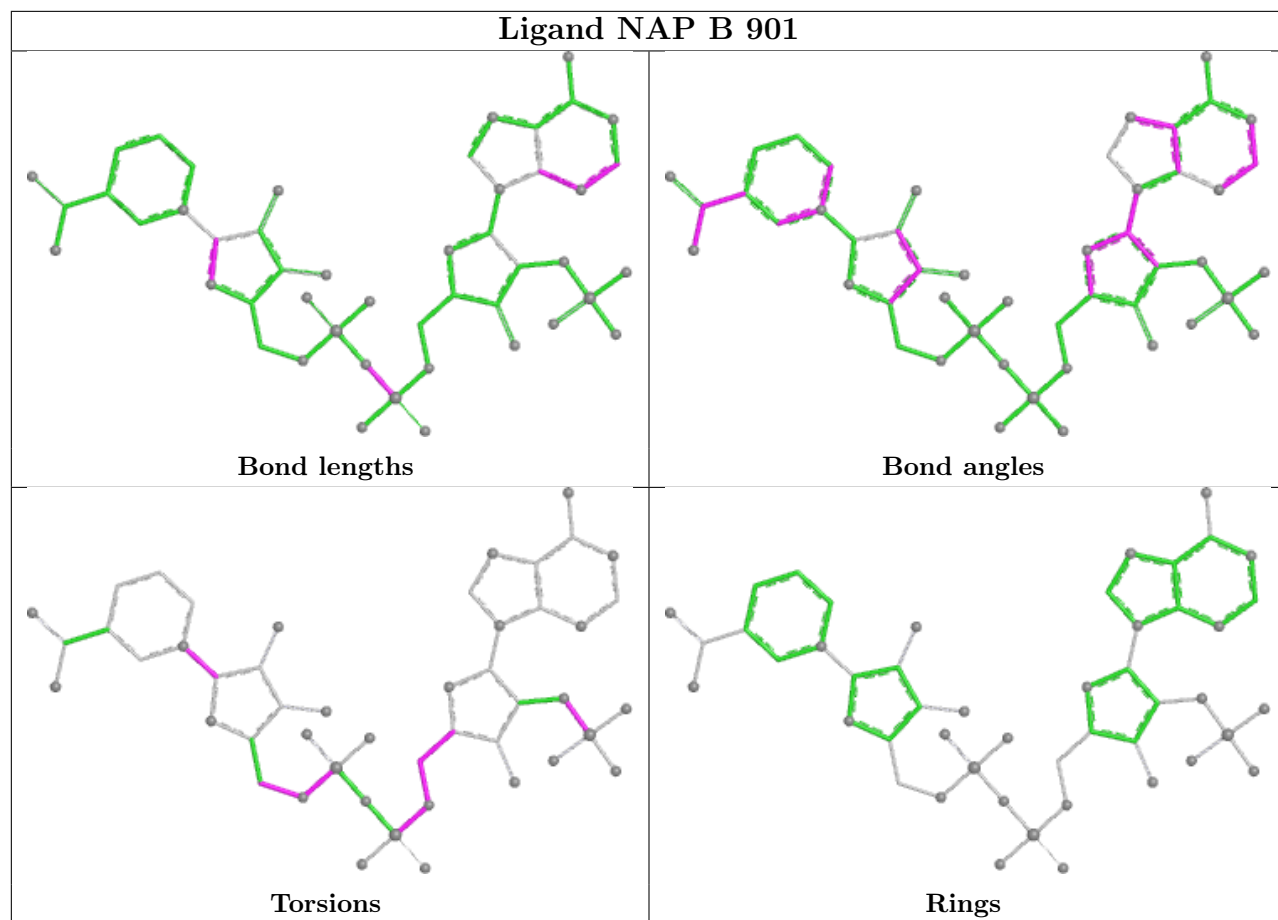
Mol	Chain	Res	Type	Atoms
3	A	904	MLA	O1B-C1-C2-C3
2	A	900	NAP	C4D-C5D-O5D-PN
3	A	904	MLA	O1A-C1-C2-C3
2	A	900	NAP	O4B-C4B-C5B-O5B
3	B	905	MLA	O1A-C1-C2-C3
2	B	901	NAP	C4B-C5B-O5B-PA
2	A	900	NAP	C3B-C4B-C5B-O5B
3	B	905	MLA	O1B-C1-C2-C3
2	B	901	NAP	C4D-C5D-O5D-PN
2	A	900	NAP	O4D-C4D-C5D-O5D
2	B	901	NAP	C5B-O5B-PA-O2A
2	B	901	NAP	C5D-O5D-PN-O3
2	B	901	NAP	C5D-O5D-PN-O1N
2	B	901	NAP	C5D-O5D-PN-O2N
3	A	903	MLA	O1B-C1-C2-C3
3	A	903	MLA	O1A-C1-C2-C3
2	A	900	NAP	C4B-C5B-O5B-PA
3	A	903	MLA	C1-C2-C3-O3A
2	A	900	NAP	C3D-C4D-C5D-O5D
2	B	901	NAP	C2B-O2B-P2B-O2X

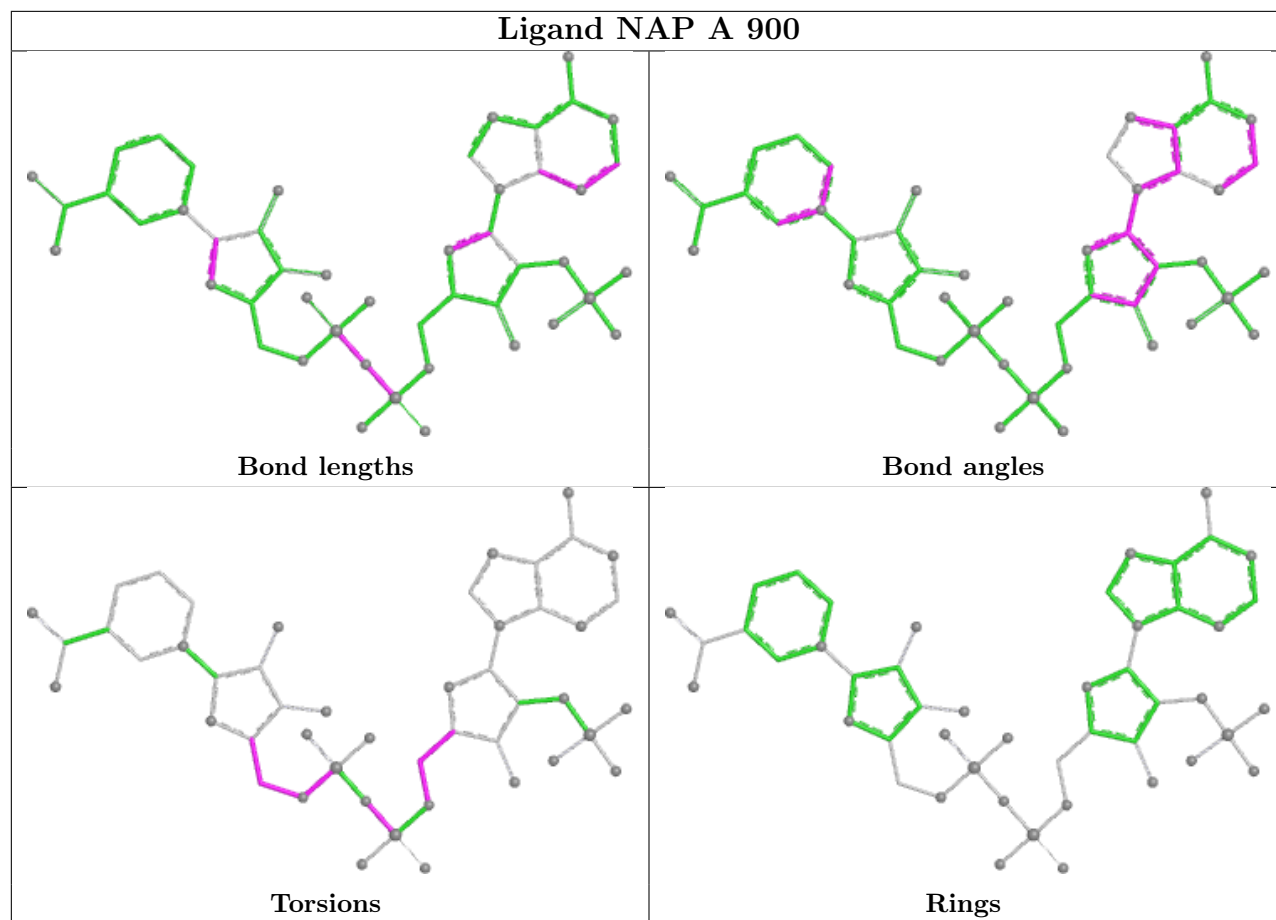
There are no ring outliers.

4 monomers are involved in 20 short contacts:

Mol	Chain	Res	Type	Clashes	Symm-Clashes
2	B	901	NAP	9	0
3	B	902	MLA	1	0
3	A	904	MLA	3	0
2	A	900	NAP	11	0

The following is a two-dimensional graphical depiction of Mogul quality analysis of bond lengths, bond angles, torsion angles, and ring geometry for all instances of the Ligand of Interest. In addition, ligands with molecular weight > 250 and outliers as shown on the validation Tables will also be included. For torsion angles, if less than 5% of the Mogul distribution of torsion angles is within 10 degrees of the torsion angle in question, then that torsion angle is considered an outlier. Any bond that is central to one or more torsion angles identified as an outlier by Mogul will be highlighted in the graph. For rings, the root-mean-square deviation (RMSD) between the ring in question and similar rings identified by Mogul is calculated over all ring torsion angles. If the average RMSD is greater than 60 degrees and the minimal RMSD between the ring in question and any Mogul-identified rings is also greater than 60 degrees, then that ring is considered an outlier. The outliers are highlighted in purple. The color gray indicates Mogul did not find sufficient equivalents in the CSD to analyse the geometry.





5.7 Other polymers [\(i\)](#)

There are no such residues in this entry.

5.8 Polymer linkage issues [\(i\)](#)

There are no chain breaks in this entry.

6 Fit of model and data

6.1 Protein, DNA and RNA chains

In the following table, the column labelled ‘#RSRZ> 2’ contains the number (and percentage) of RSRZ outliers, followed by percent RSRZ outliers for the chain as percentile scores relative to all X-ray entries and entries of similar resolution. The OWAB column contains the minimum, median, 95th percentile and maximum values of the occupancy-weighted average B-factor per residue. The column labelled ‘Q< 0.9’ lists the number of (and percentage) of residues with an average occupancy less than 0.9.

Mol	Chain	Analysed	<RSRZ>	#RSRZ>2	OWAB(Å ²)	Q<0.9
1	A	338/354 (95%)	0.14	11 (3%) 49 51	21, 34, 51, 56	0
1	B	338/354 (95%)	0.06	14 (4%) 42 43	22, 33, 48, 55	0
All	All	676/708 (95%)	0.10	25 (3%) 45 47	21, 33, 49, 56	0

All (25) RSRZ outliers are listed below:

Mol	Chain	Res	Type	RSRZ
1	B	143	GLU	4.1
1	B	44	ARG	3.4
1	A	227	ASP	3.3
1	B	102	GLU	3.2
1	B	94	ASP	3.1
1	A	44	ARG	3.1
1	B	234	ASN	3.0
1	B	79	GLU	3.0
1	A	82	GLU	2.9
1	A	94	ASP	2.8
1	B	305	ASN	2.8
1	A	143	GLU	2.6
1	B	265	GLU	2.5
1	B	77	LYS	2.5
1	A	279	ASP	2.5
1	A	43	GLU	2.5
1	A	226	LYS	2.4
1	B	43	GLU	2.3
1	B	269	GLU	2.2
1	A	305	ASN	2.2
1	A	231	GLU	2.2
1	A	62	ILE	2.2
1	B	231	GLU	2.2
1	B	82	GLU	2.1

Continued on next page...

Continued from previous page...

Mol	Chain	Res	Type	RSRZ
1	B	226	LYS	2.1

6.2 Non-standard residues in protein, DNA, RNA chains [i](#)

There are no non-standard protein/DNA/RNA residues in this entry.

6.3 Carbohydrates [i](#)

There are no monosaccharides in this entry.

6.4 Ligands [i](#)

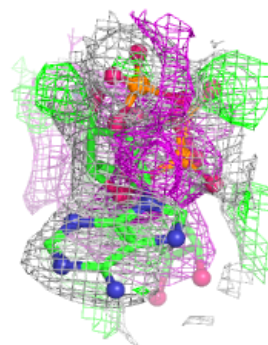
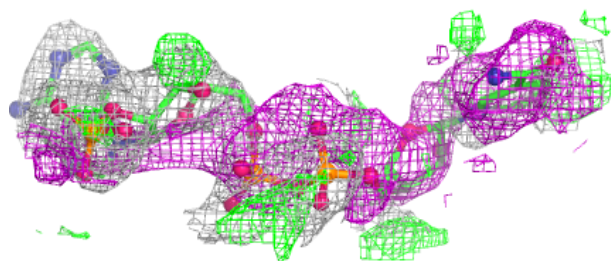
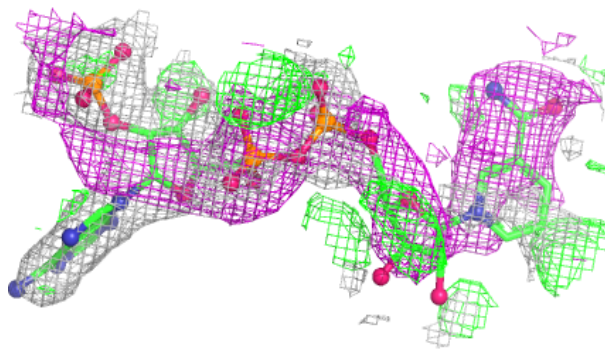
In the following table, the Atoms column lists the number of modelled atoms in the group and the number defined in the chemical component dictionary. The B-factors column lists the minimum, median, 95th percentile and maximum values of B factors of atoms in the group. The column labelled 'Q< 0.9' lists the number of atoms with occupancy less than 0.9.

Mol	Type	Chain	Res	Atoms	RSCC	RSR	B-factors(Å ²)	Q<0.9
3	MLA	B	902	7/7	0.56	0.47	101,101,102,102	0
2	NAP	B	901	48/48	0.67	0.30	74,89,99,99	0
2	NAP	A	900	48/48	0.69	0.29	72,86,96,96	0
3	MLA	A	904	7/7	0.70	0.31	64,65,66,66	0
3	MLA	B	905	7/7	0.95	0.09	35,35,35,35	0
3	MLA	A	903	7/7	0.96	0.09	30,31,32,32	0

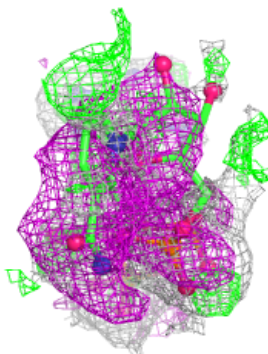
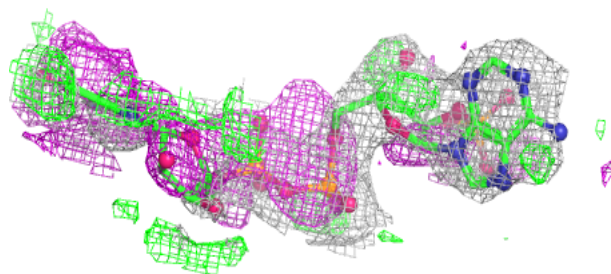
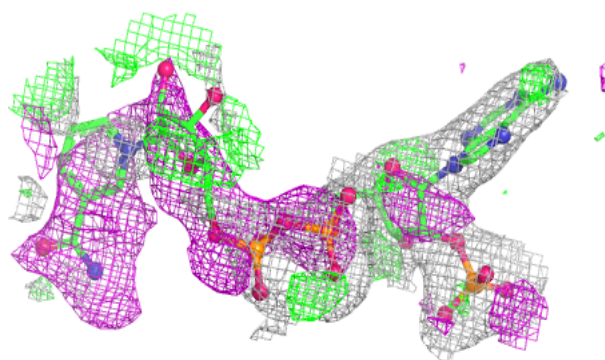
The following is a graphical depiction of the model fit to experimental electron density of all instances of the Ligand of Interest. In addition, ligands with molecular weight > 250 and outliers as shown on the geometry validation Tables will also be included. Each fit is shown from different orientation to approximate a three-dimensional view.

Electron density around NAP B 901:

$2mF_o-DF_c$ (at 0.7 rmsd) in gray
 mF_o-DF_c (at 3 rmsd) in purple (negative)
and green (positive)

**Electron density around NAP A 900:**

$2mF_o-DF_c$ (at 0.7 rmsd) in gray
 mF_o-DF_c (at 3 rmsd) in purple (negative)
and green (positive)



6.5 Other polymers [i](#)

There are no such residues in this entry.