



# Full wwPDB X-ray Structure Validation Report ⓘ

Dec 14, 2024 – 04:31 PM EST

PDB ID : 1YSL  
Title : Crystal structure of HMG-CoA synthase from *Enterococcus faecalis* with AcetoAcetyl-CoA ligand.  
Authors : Steussy, C.N.; Vartia, A.A.; Burgner II, J.W.; Sutherlin, A.; Rodwell, V.W.; Stauffacher, C.V.  
Deposited on : 2005-02-08  
Resolution : 1.90 Å(reported)

This is a Full wwPDB X-ray Structure Validation Report for a publicly released PDB entry.

We welcome your comments at [validation@mail.wwpdb.org](mailto:validation@mail.wwpdb.org)

A user guide is available at

<https://www.wwpdb.org/validation/2017/XrayValidationReportHelp>

with specific help available everywhere you see the ⓘ symbol.

The types of validation reports are described at

<http://www.wwpdb.org/validation/2017/FAQs#types>.

---

The following versions of software and data (see [references ⓘ](#)) were used in the production of this report:

MolProbity : 4.02b-467  
Mogul : 2022.3.0, CSD as543be (2022)  
Xtrriage (Phenix) : 1.21  
EDS : 3.0  
buster-report : 1.1.7 (2018)  
Percentile statistics : 20231227.v01 (using entries in the PDB archive December 27th 2023)  
CCP4 : 9.0.004 (Gargrove)  
Density-Fitness : 1.0.11  
Ideal geometry (proteins) : Engh & Huber (2001)  
Ideal geometry (DNA, RNA) : Parkinson et al. (1996)  
Validation Pipeline (wwPDB-VP) : 2.40

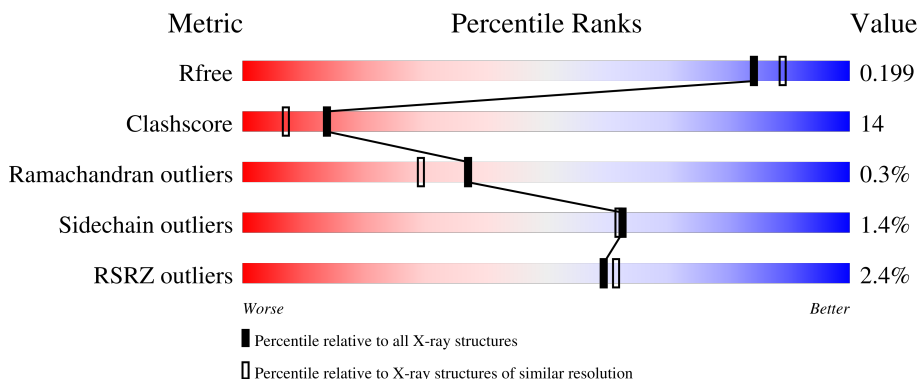
# 1 Overall quality at a glance

The following experimental techniques were used to determine the structure:

*X-RAY DIFFRACTION*

The reported resolution of this entry is 1.90 Å.

Percentile scores (ranging between 0-100) for global validation metrics of the entry are shown in the following graphic. The table shows the number of entries on which the scores are based.



Metric	Whole archive (#Entries)	Similar resolution (#Entries, resolution range(Å))
$R_{free}$	164625	7293 (1.90-1.90)
Clashscore	180529	8090 (1.90-1.90)
Ramachandran outliers	177936	8022 (1.90-1.90)
Sidechain outliers	177891	8022 (1.90-1.90)
RSRZ outliers	164620	7292 (1.90-1.90)

The table below summarises the geometric issues observed across the polymeric chains and their fit to the electron density. The red, orange, yellow and green segments of the lower bar indicate the fraction of residues that contain outliers for  $\geq 3$ , 2, 1 and 0 types of geometric quality criteria respectively. A grey segment represents the fraction of residues that are not modelled. The numeric value for each fraction is indicated below the corresponding segment, with a dot representing fractions  $\leq 5\%$ . The upper red bar (where present) indicates the fraction of residues that have poor fit to the electron density. The numeric value is given above the bar.

Mol	Chain	Length	Quality of chain
1	A	402	 3% 76% 17% 5%
2	B	403	 3% 78% 17% 5%

The following table lists non-polymeric compounds, carbohydrate monomers and non-standard residues in protein, DNA, RNA chains that are outliers for geometric or electron-density-fit criteria:

Mol	Type	Chain	Res	Chirality	Geometry	Clashes	Electron density
6	AAE	B	611[B]	-	-	X	-

## 2 Entry composition i

There are 7 unique types of molecules in this entry. The entry contains 6670 atoms, of which 0 are hydrogens and 0 are deuteriums.

In the tables below, the ZeroOcc column contains the number of atoms modelled with zero occupancy, the AltConf column contains the number of residues with at least one atom in alternate conformation and the Trace column contains the number of residues modelled with at most 2 atoms.

- Molecule 1 is a protein called HMG-CoA synthase.

Mol	Chain	Residues	Atoms					ZeroOcc	AltConf	Trace
			Total	C	N	O	S			
1	A	383	3053	1935	504	601	13	0	14	0

There are 19 discrepancies between the modelled and reference sequences:

Chain	Residue	Modelled	Actual	Comment	Reference
A	-18	MET	-	expression tag	GB 9937383
A	-17	GLY	-	expression tag	GB 9937383
A	-16	SER	-	expression tag	GB 9937383
A	-15	HIS	-	expression tag	GB 9937383
A	-14	HIS	-	expression tag	GB 9937383
A	-13	HIS	-	expression tag	GB 9937383
A	-12	HIS	-	expression tag	GB 9937383
A	-11	HIS	-	expression tag	GB 9937383
A	-10	HIS	-	expression tag	GB 9937383
A	-9	SER	-	expression tag	GB 9937383
A	-8	SER	-	expression tag	GB 9937383
A	-7	GLY	-	expression tag	GB 9937383
A	-6	LEU	-	expression tag	GB 9937383
A	-5	VAL	-	expression tag	GB 9937383
A	-4	PRO	-	expression tag	GB 9937383
A	-3	ARG	-	expression tag	GB 9937383
A	-2	GLY	-	expression tag	GB 9937383
A	-1	SER	-	expression tag	GB 9937383
A	0	HIS	-	expression tag	GB 9937383

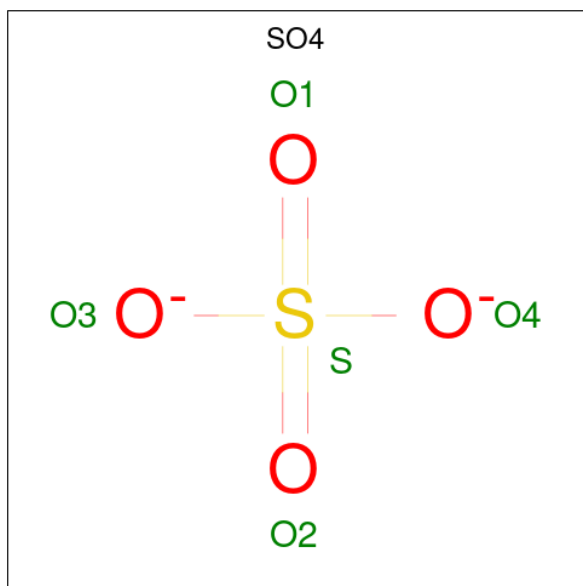
- Molecule 2 is a protein called HMG-CoA synthase.

Mol	Chain	Residues	Atoms					ZeroOcc	AltConf	Trace
			Total	C	N	O	S			
2	B	383	3019	1915	498	593	13	0	25	0

There are 20 discrepancies between the modelled and reference sequences:

Chain	Residue	Modelled	Actual	Comment	Reference
B	-18	MET	-	expression tag	GB 9937383
B	-17	GLY	-	expression tag	GB 9937383
B	-16	SER	-	expression tag	GB 9937383
B	-15	HIS	-	expression tag	GB 9937383
B	-14	HIS	-	expression tag	GB 9937383
B	-13	HIS	-	expression tag	GB 9937383
B	-12	HIS	-	expression tag	GB 9937383
B	-11	HIS	-	expression tag	GB 9937383
B	-10	HIS	-	expression tag	GB 9937383
B	-9	SER	-	expression tag	GB 9937383
B	-8	SER	-	expression tag	GB 9937383
B	-7	GLY	-	expression tag	GB 9937383
B	-6	LEU	-	expression tag	GB 9937383
B	-5	VAL	-	expression tag	GB 9937383
B	-4	PRO	-	expression tag	GB 9937383
B	-3	ARG	-	expression tag	GB 9937383
B	-2	GLY	-	expression tag	GB 9937383
B	-1	SER	-	expression tag	GB 9937383
B	0	HIS	-	expression tag	GB 9937383
B	111	CSD	CYS	microheterogeneity	GB 9937383

- Molecule 3 is SULFATE ION (three-letter code: SO4) (formula: O<sub>4</sub>S).



Mol	Chain	Residues	Atoms			ZeroOcc	AltConf
3	A	1	Total	O	S	0	0
			5	4	1		

*Continued on next page...*

Continued from previous page...

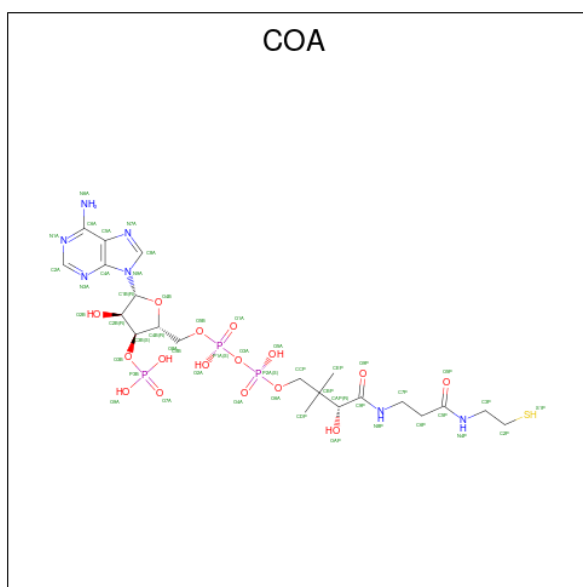
Mol	Chain	Residues	Atoms			ZeroOcc	AltConf
3	B	1	Total	O	S	0	0
			5	4	1		

- Molecule 4 is GLYCEROL (three-letter code: GOL) (formula:  $C_3H_8O_3$ ).



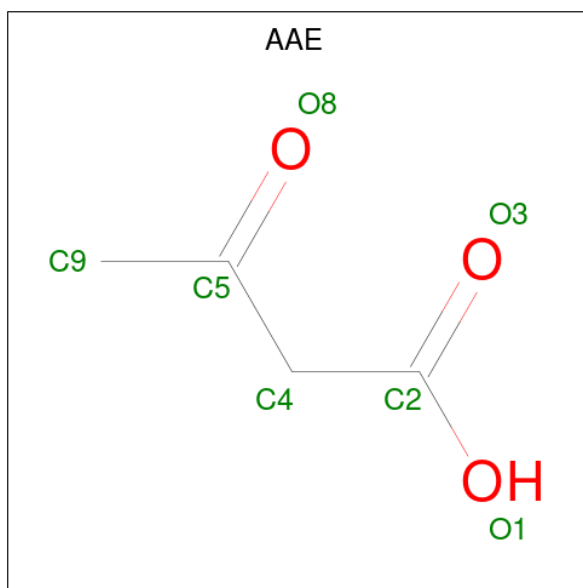
Mol	Chain	Residues	Atoms			ZeroOcc	AltConf
4	A	1	Total	C	O	0	0
			6	3	3		
4	B	1	Total	C	O	0	0
			6	3	3		

- Molecule 5 is COENZYME A (three-letter code: COA) (formula:  $C_{21}H_{36}N_7O_{16}P_3S$ ).



Mol	Chain	Residues	Atoms					ZeroOcc	AltConf	
			Total	C	N	O	P			S
5	B	1	48	21	7	16	3	1	0	0

- Molecule 6 is ACETOACETIC ACID (three-letter code: AAE) (formula: C<sub>4</sub>H<sub>6</sub>O<sub>3</sub>).



Mol	Chain	Residues	Atoms		ZeroOcc	AltConf
			Total	C O		
6	B	1	6	4 2	0	1

- Molecule 7 is water.

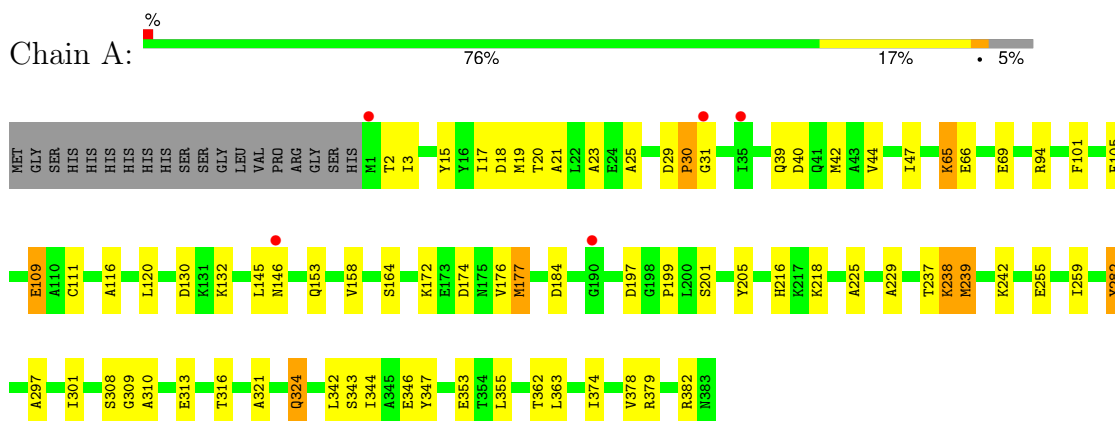
<b>Mol</b>	<b>Chain</b>	<b>Residues</b>	<b>Atoms</b>		<b>ZeroOcc</b>	<b>AltConf</b>
7	A	267	Total 267	O 267	0	0
7	B	255	Total 255	O 255	0	0



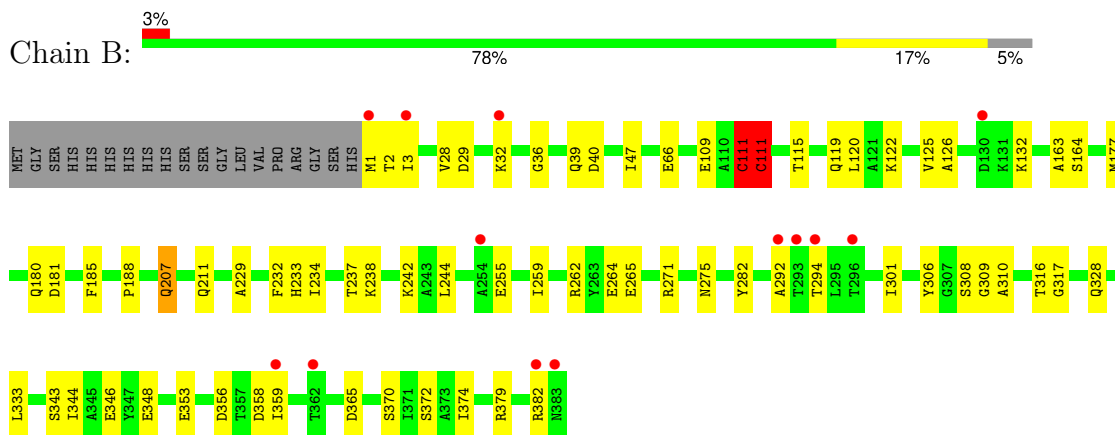
### 3 Residue-property plots [i](#)

These plots are drawn for all protein, RNA, DNA and oligosaccharide chains in the entry. The first graphic for a chain summarises the proportions of the various outlier classes displayed in the second graphic. The second graphic shows the sequence view annotated by issues in geometry and electron density. Residues are color-coded according to the number of geometric quality criteria for which they contain at least one outlier: green = 0, yellow = 1, orange = 2 and red = 3 or more. A red dot above a residue indicates a poor fit to the electron density ( $RSRZ > 2$ ). Stretches of 2 or more consecutive residues without any outlier are shown as a green connector. Residues present in the sample, but not in the model, are shown in grey.

- Molecule 1: HMG-CoA synthase



- Molecule 2: HMG-CoA synthase



## 4 Data and refinement statistics

Property	Value	Source
Space group	I 2 2 2	Depositor
Cell constants a, b, c, $\alpha$ , $\beta$ , $\gamma$	105.30Å 109.01Å 140.80Å 90.00° 90.00° 90.00°	Depositor
Resolution (Å)	28.00 – 1.90 28.00 – 1.90	Depositor EDS
% Data completeness (in resolution range)	99.8 (28.00-1.90) 99.7 (28.00-1.90)	Depositor EDS
$R_{merge}$	(Not available)	Depositor
$R_{sym}$	(Not available)	Depositor
$\langle I/\sigma(I) \rangle$ <sup>1</sup>	3.60 (at 1.90Å)	Xtrriage
Refinement program	CNS	Depositor
R, $R_{free}$	0.179 , 0.201 0.176 , 0.199	Depositor DCC
$R_{free}$ test set	2565 reflections (4.02%)	wwPDB-VP
Wilson B-factor (Å <sup>2</sup> )	21.6	Xtrriage
Anisotropy	0.221	Xtrriage
Bulk solvent $k_{sol}$ (e/Å <sup>3</sup> ), $B_{sol}$ (Å <sup>2</sup> )	0.37 , 44.9	EDS
L-test for twinning <sup>2</sup>	$\langle  L  \rangle = 0.50$ , $\langle L^2 \rangle = 0.33$	Xtrriage
Estimated twinning fraction	0.010 for -k,-h,-l	Xtrriage
$F_o, F_c$ correlation	0.96	EDS
Total number of atoms	6670	wwPDB-VP
Average B, all atoms (Å <sup>2</sup> )	23.0	wwPDB-VP

Xtrriage's analysis on translational NCS is as follows: *The largest off-origin peak in the Patterson function is 4.20% of the height of the origin peak. No significant pseudotranslation is detected.*

<sup>1</sup>Intensities estimated from amplitudes.

<sup>2</sup>Theoretical values of  $\langle |L| \rangle$ ,  $\langle L^2 \rangle$  for acentric reflections are 0.5, 0.333 respectively for untwinned datasets, and 0.375, 0.2 for perfectly twinned datasets.

## 5 Model quality [i](#)

### 5.1 Standard geometry [i](#)

Bond lengths and bond angles in the following residue types are not validated in this section: COA, CSD, AAE, GOL, SO4

The Z score for a bond length (or angle) is the number of standard deviations the observed value is removed from the expected value. A bond length (or angle) with  $|Z| > 5$  is considered an outlier worth inspection. RMSZ is the root-mean-square of all Z scores of the bond lengths (or angles).

Mol	Chain	Bond lengths		Bond angles	
		RMSZ	# Z  >5	RMSZ	# Z  >5
1	A	0.35	0/3095	0.61	0/4198
2	B	0.39	0/3068	0.63	0/4161
All	All	0.37	0/6163	0.62	0/8359

Chiral center outliers are detected by calculating the chiral volume of a chiral center and verifying if the center is modelled as a planar moiety or with the opposite hand. A planarity outlier is detected by checking planarity of atoms in a peptide group, atoms in a mainchain group or atoms of a sidechain that are expected to be planar.

Mol	Chain	#Chirality outliers	#Planarity outliers
1	A	0	1
2	B	0	1
All	All	0	2

There are no bond length outliers.

There are no bond angle outliers.

There are no chirality outliers.

All (2) planarity outliers are listed below:

Mol	Chain	Res	Type	Group
1	A	282	TYR	Sidechain
2	B	111[B]	CSD	Mainchain

### 5.2 Too-close contacts [i](#)

In the following table, the Non-H and H(model) columns list the number of non-hydrogen atoms and hydrogen atoms in the chain respectively. The H(added) column lists the number of hydrogen atoms added and optimized by MolProbity. The Clashes column lists the number of clashes within the asymmetric unit, whereas Symm-Clashes lists symmetry-related clashes.

Mol	Chain	Non-H	H(model)	H(added)	Clashes	Symm-Clashes
1	A	3053	0	2995	88	0
2	B	3019	0	2909	87	0
3	A	5	0	0	0	0
3	B	5	0	0	0	0
4	A	6	0	8	2	0
4	B	6	0	8	1	0
5	B	48	0	32	9	0
6	B	6	0	5	7	0
7	A	267	0	0	5	0
7	B	255	0	0	6	0
All	All	6670	0	5957	172	0

The all-atom clashscore is defined as the number of clashes found per 1000 atoms (including hydrogen atoms). The all-atom clashscore for this structure is 14.

All (172) close contacts within the same asymmetric unit are listed below, sorted by their clash magnitude.

Atom-1	Atom-2	Interatomic distance (Å)	Clash overlap (Å)
1:A:17[A]:ILE:HD11	1:A:344:ILE:HD13	1.25	1.14
2:B:370:SER:OG	2:B:382[A]:ARG:NH1	1.79	1.13
2:B:262:ARG:NH2	2:B:294:THR:HB	1.66	1.10
1:A:239:MET:HA	1:A:239:MET:HE2	1.42	1.01
1:A:239:MET:CE	1:A:242:LYS:HD2	1.92	1.00
1:A:17[A]:ILE:HD11	1:A:344:ILE:CD1	1.93	0.98
2:B:262:ARG:HH22	2:B:294:THR:HB	0.82	0.98
2:B:262:ARG:HH22	2:B:294:THR:CB	1.75	0.98
1:A:239:MET:HE2	1:A:242:LYS:HD2	1.46	0.97
1:A:239:MET:HA	1:A:239:MET:CE	1.98	0.93
1:A:120:LEU:HD13	2:B:120:LEU:HD13	1.52	0.89
2:B:365:ASP:HB3	2:B:382[A]:ARG:HH12	1.38	0.88
1:A:355:LEU:HD11	1:A:374[A]:ILE:HD11	1.57	0.87
2:B:207[A]:GLN:NE2	2:B:211:GLN:HE21	1.72	0.85
2:B:32:LYS:HG2	5:B:601:COA:N7A	1.94	0.82
2:B:207[A]:GLN:HE21	2:B:211:GLN:HE21	1.24	0.82
1:A:355:LEU:HD11	1:A:374[A]:ILE:CD1	2.09	0.82
2:B:372:SER:HB3	2:B:382[A]:ARG:CG	2.10	0.82
2:B:372:SER:HB3	2:B:382[A]:ARG:HG3	1.61	0.81
1:A:316[A]:THR:HG21	7:A:701:HOH:O	1.79	0.80
1:A:65:LYS:HE2	1:A:65:LYS:HA	1.62	0.79
2:B:180:GLN:HE22	2:B:207[A]:GLN:HE22	1.31	0.78
1:A:17[A]:ILE:CD1	1:A:344:ILE:HD13	2.09	0.77
1:A:172:LYS:CG	1:A:316[A]:THR:HG23	2.15	0.77

*Continued on next page...*

*Continued from previous page...*

Atom-1	Atom-2	Interatomic distance (Å)	Clash overlap (Å)
2:B:207[A]:GLN:NE2	2:B:211:GLN:NE2	2.34	0.75
2:B:29:ASP:OD2	5:B:601:COA:N6A	2.20	0.74
2:B:365:ASP:HB3	2:B:382[A]:ARG:NH1	2.03	0.73
1:A:65:LYS:HE2	1:A:65:LYS:CA	2.19	0.72
2:B:3[A]:ILE:HD12	2:B:122:LYS:HG2	1.71	0.72
2:B:294:THR:HG21	7:B:823:HOH:O	1.90	0.71
1:A:174:ASP:OD1	1:A:316[A]:THR:HG22	1.91	0.70
2:B:3[B]:ILE:HD11	2:B:126:ALA:HA	1.72	0.70
1:A:17[B]:ILE:HG21	1:A:347:TYR:HB2	1.72	0.69
1:A:44[A]:VAL:HG21	1:A:342:LEU:HD12	1.75	0.69
2:B:356[A]:ASP:OD1	2:B:358:ASP:HB2	1.92	0.68
1:A:172:LYS:HB2	1:A:316[A]:THR:CG2	2.24	0.68
2:B:47:ILE:HD13	2:B:353:GLU:HG2	1.79	0.65
2:B:275:ASN:HD21	6:B:611[B]:AAE:H42	1.61	0.64
2:B:39:GLN:NE2	2:B:237:THR:H	1.96	0.63
1:A:172:LYS:HG3	1:A:316[A]:THR:HG23	1.78	0.63
2:B:32:LYS:CG	5:B:601:COA:N7A	2.62	0.62
1:A:65:LYS:NZ	1:A:69:GLU:OE1	2.32	0.61
2:B:379:ARG:HG3	4:B:605:GOL:H11	1.80	0.61
2:B:372:SER:HB3	2:B:382[A]:ARG:HG2	1.83	0.60
2:B:207[A]:GLN:HE21	2:B:211:GLN:NE2	1.94	0.59
1:A:378:VAL:HA	4:A:604:GOL:H31	1.83	0.59
1:A:66:GLU:H	1:A:66:GLU:CD	2.05	0.59
1:A:238:LYS:O	1:A:242:LYS:HG3	2.02	0.59
1:A:25:ALA:HB2	1:A:344:ILE:HG13	1.84	0.59
2:B:3[B]:ILE:CD1	2:B:126:ALA:HA	2.32	0.59
1:A:205:TYR:CE1	1:A:239:MET:HG3	2.37	0.59
2:B:233:HIS:CE1	6:B:611[B]:AAE:O1	2.56	0.58
1:A:47:ILE:HD13	1:A:353:GLU:HG2	1.84	0.57
1:A:39:GLN:OE1	1:A:237:THR:HG23	2.04	0.57
1:A:255:GLU:O	1:A:259:ILE:HG12	2.04	0.57
2:B:365:ASP:H	2:B:382[A]:ARG:CZ	2.16	0.57
1:A:42:MET:SD	1:A:153:GLN:HB2	2.44	0.57
1:A:65:LYS:HE2	1:A:65:LYS:O	2.04	0.57
1:A:29:ASP:O	1:A:31:GLY:N	2.38	0.56
1:A:172:LYS:HG3	1:A:316[A]:THR:CG2	2.35	0.56
2:B:233:HIS:NE2	6:B:611[B]:AAE:O1	2.39	0.56
1:A:172:LYS:HB2	1:A:316[A]:THR:HG23	1.87	0.56
1:A:29:ASP:C	1:A:31:GLY:H	2.09	0.56
2:B:238:LYS:O	2:B:242:LYS:HG3	2.05	0.55
2:B:308[B]:SER:OG	6:B:611[B]:AAE:H93	2.06	0.55

*Continued on next page...*

*Continued from previous page...*

Atom-1	Atom-2	Interatomic distance (Å)	Clash overlap (Å)
2:B:365:ASP:N	2:B:382[A]:ARG:NH2	2.54	0.55
1:A:239:MET:HE2	1:A:239:MET:CA	2.29	0.54
2:B:255:GLU:O	2:B:259:ILE:HG13	2.08	0.54
1:A:65:LYS:NZ	1:A:69:GLU:HG2	2.23	0.53
2:B:232:PHE:O	2:B:234:ILE:HG13	2.08	0.53
1:A:130:ASP:HB2	7:A:871:HOH:O	2.09	0.53
2:B:32:LYS:HG2	5:B:601:COA:C5A	2.37	0.53
1:A:17[B]:ILE:HG22	1:A:342:LEU:HB2	1.89	0.53
2:B:29:ASP:HB3	5:B:601:COA:H62A	1.73	0.53
1:A:116:ALA:O	1:A:120:LEU:HG	2.08	0.53
2:B:262:ARG:NH1	2:B:292:ALA:HB1	2.24	0.52
2:B:28:VAL:HG13	2:B:32:LYS:HD2	1.92	0.52
1:A:172:LYS:CB	1:A:316[A]:THR:HG23	2.39	0.52
1:A:65:LYS:HZ1	1:A:69:GLU:HG2	1.74	0.52
1:A:239:MET:CE	1:A:242:LYS:CD	2.80	0.51
1:A:23:ALA:CB	1:A:30:PRO:HA	2.41	0.51
1:A:343:SER:OG	1:A:346:GLU:HG3	2.11	0.51
1:A:18:ASP:OD2	1:A:20:THR:HB	2.12	0.50
1:A:239:MET:HA	1:A:239:MET:HE3	1.90	0.50
1:A:120:LEU:HD13	2:B:120:LEU:CD1	2.35	0.49
2:B:356[A]:ASP:HB3	2:B:359:ILE:HD12	1.93	0.49
1:A:2:THR:O	1:A:3:ILE:HD13	2.11	0.49
1:A:309:GLY:N	1:A:310:ALA:HA	2.27	0.49
1:A:177[B]:MET:HG2	1:A:313:GLU:CD	2.32	0.49
2:B:132:LYS:CE	7:B:705:HOH:O	2.61	0.49
1:A:19:MET:HG2	1:A:40:ASP:C	2.33	0.49
1:A:197:ASP:OD1	1:A:199:PRO:HD2	2.13	0.49
2:B:308[B]:SER:OG	6:B:611[B]:AAE:C9	2.61	0.49
6:B:611[B]:AAE:H91	7:B:858:HOH:O	2.12	0.49
1:A:177[B]:MET:HG2	1:A:313:GLU:OE1	2.13	0.48
2:B:264:GLU:HG2	7:B:843:HOH:O	2.11	0.48
1:A:239:MET:HE1	1:A:242:LYS:HD2	1.91	0.48
2:B:365:ASP:O	2:B:382[A]:ARG:NH1	2.45	0.48
1:A:3:ILE:HD13	1:A:164:SER:HA	1.96	0.48
2:B:232:PHE:CZ	2:B:244:LEU:HD13	2.49	0.48
2:B:132:LYS:NZ	7:B:705:HOH:O	2.42	0.48
1:A:23:ALA:HB3	1:A:30:PRO:HA	1.95	0.47
1:A:15:TYR:HB2	1:A:44[A]:VAL:HG23	1.96	0.47
1:A:158:VAL:HG11	1:A:282:TYR:HB3	1.97	0.47
1:A:362:THR:C	1:A:363:LEU:HD12	2.36	0.46
2:B:125[B]:VAL:HG11	2:B:164:SER:N	2.30	0.46

*Continued on next page...*

*Continued from previous page...*

Atom-1	Atom-2	Interatomic distance (Å)	Clash overlap (Å)
2:B:229:ALA:HB3	2:B:301:ILE:HD12	1.97	0.46
2:B:39:GLN:HE22	2:B:237:THR:H	1.63	0.46
2:B:309:GLY:N	2:B:310:ALA:HA	2.30	0.46
1:A:218:LYS:HE2	7:A:706:HOH:O	2.15	0.46
2:B:185:PHE:HB3	2:B:308[A]:SER:CB	2.45	0.46
1:A:145:LEU:O	1:A:146:ASN:HB2	2.16	0.46
1:A:355:LEU:HD11	1:A:374[A]:ILE:HD12	1.94	0.46
2:B:343:SER:OG	2:B:346:GLU:HG3	2.16	0.46
5:B:601:COA:S1P	6:B:611[B]:AAE:H92	2.56	0.46
2:B:185:PHE:HB3	2:B:308[B]:SER:CB	2.46	0.46
2:B:119:GLN:NE2	2:B:119:GLN:HA	2.31	0.45
2:B:3[B]:ILE:HD13	2:B:126:ALA:HB2	1.98	0.45
2:B:39:GLN:HE22	2:B:237:THR:HG23	1.81	0.45
2:B:115:THR:O	2:B:119:GLN:HG2	2.16	0.45
2:B:374:ILE:CD1	2:B:379:ARG:HG2	2.47	0.45
1:A:172:LYS:CB	1:A:316[A]:THR:CG2	2.95	0.45
2:B:328:GLN:HE21	2:B:328:GLN:HB3	1.61	0.45
2:B:36:GLY:HA3	5:B:601:COA:O4B	2.17	0.44
2:B:29:ASP:HB3	5:B:601:COA:N6A	2.32	0.44
1:A:184:ASP:HB2	1:A:201[B]:SER:HA	1.99	0.44
1:A:225:ALA:HA	1:A:255:GLU:OE2	2.17	0.44
2:B:3[A]:ILE:HD12	2:B:122:LYS:CG	2.42	0.44
1:A:172:LYS:CG	1:A:316[A]:THR:CG2	2.91	0.44
2:B:344:ILE:O	2:B:348:GLU:HG3	2.17	0.44
2:B:365:ASP:N	2:B:382[A]:ARG:CZ	2.81	0.44
1:A:184:ASP:HB2	1:A:201[A]:SER:HA	2.00	0.44
1:A:238:LYS:HD3	1:A:242:LYS:HE3	1.99	0.44
1:A:229:ALA:HB3	1:A:301:ILE:HD13	2.00	0.43
2:B:115:THR:HA	2:B:282:TYR:OH	2.19	0.43
1:A:308[A]:SER:C	1:A:310:ALA:HA	2.39	0.43
2:B:40:ASP:OD2	2:B:271[A]:ARG:NH2	2.49	0.43
2:B:262:ARG:HD3	2:B:265:GLU:OE1	2.18	0.43
1:A:105:PHE:CZ	2:B:120:LEU:HD11	2.54	0.43
1:A:308[B]:SER:C	1:A:310:ALA:HA	2.39	0.43
2:B:2:THR:C	2:B:3[B]:ILE:HG13	2.39	0.43
2:B:3[B]:ILE:CD1	2:B:126:ALA:CA	2.97	0.43
2:B:333:LEU:HD12	2:B:333:LEU:HA	1.89	0.43
1:A:25:ALA:CB	1:A:344:ILE:HG21	2.48	0.42
1:A:176:VAL:HG21	1:A:216:HIS:HA	2.01	0.42
2:B:32:LYS:CD	5:B:601:COA:N7A	2.83	0.42
1:A:21:ALA:C	1:A:344:ILE:HD11	2.40	0.42

*Continued on next page...*

Continued from previous page...

Atom-1	Atom-2	Interatomic distance (Å)	Clash overlap (Å)
1:A:382:ARG:O	1:A:382:ARG:HG3	2.20	0.42
1:A:355:LEU:HD21	1:A:374[A]:ILE:HD11	2.00	0.42
1:A:132:LYS:NZ	7:A:841:HOH:O	2.50	0.42
1:A:39:GLN:HB3	7:A:646:HOH:O	2.18	0.42
1:A:65:LYS:HE2	1:A:65:LYS:C	2.40	0.42
1:A:29:ASP:C	1:A:31:GLY:N	2.73	0.41
1:A:309:GLY:N	1:A:310:ALA:CA	2.83	0.41
2:B:294:THR:HG22	2:B:294:THR:O	2.21	0.41
2:B:111[A]:CYS:HB2	2:B:306:TYR:O	2.21	0.41
2:B:132:LYS:HE2	7:B:705:HOH:O	2.21	0.41
1:A:101:PHE:HA	2:B:177[A]:MET:O	2.21	0.41
2:B:3[A]:ILE:O	2:B:3[A]:ILE:HG13	2.20	0.41
2:B:185:PHE:CD2	2:B:185:PHE:C	2.94	0.41
2:B:316:THR:HG22	2:B:317:GLY:N	2.35	0.41
1:A:374[B]:ILE:CD1	1:A:379:ARG:HG2	2.51	0.41
2:B:125[B]:VAL:HG11	2:B:163:ALA:C	2.41	0.40
1:A:172:LYS:HB2	1:A:316[A]:THR:HG22	2.03	0.40
1:A:297:ALA:HB2	1:A:321:ALA:HA	2.04	0.40
4:A:604:GOL:H12	2:B:188:PRO:HG3	2.04	0.40
2:B:3[B]:ILE:CD1	2:B:126:ALA:HB2	2.52	0.40
1:A:94:ARG:HD3	2:B:181:ASP:HB3	2.03	0.40

There are no symmetry-related clashes.

## 5.3 Torsion angles [i](#)

### 5.3.1 Protein backbone [i](#)

In the following table, the Percentiles column shows the percent Ramachandran outliers of the chain as a percentile score with respect to all X-ray entries followed by that with respect to entries of similar resolution.

The Analysed column shows the number of residues for which the backbone conformation was analysed, and the total number of residues.

Mol	Chain	Analysed	Favoured	Allowed	Outliers	Percentiles	
1	A	390/402 (97%)	382 (98%)	6 (2%)	2 (0%)	25	17
2	B	386/403 (96%)	380 (98%)	6 (2%)	0	100	100
All	All	776/805 (96%)	762 (98%)	12 (2%)	2 (0%)	37	29



All (2) Ramachandran outliers are listed below:

Mol	Chain	Res	Type
1	A	30	PRO
1	A	109	GLU

### 5.3.2 Protein sidechains [i](#)

In the following table, the Percentiles column shows the percent sidechain outliers of the chain as a percentile score with respect to all X-ray entries followed by that with respect to entries of similar resolution.

The Analysed column shows the number of residues for which the sidechain conformation was analysed, and the total number of residues.

Mol	Chain	Analysed	Rotameric	Outliers	Percentiles	
1	A	321/327 (98%)	314 (98%)	7 (2%)	47	43
2	B	318/328 (97%)	315 (99%)	3 (1%)	75	77
All	All	639/655 (98%)	629 (98%)	10 (2%)	62	56

All (10) residues with a non-rotameric sidechain are listed below:

Mol	Chain	Res	Type
1	A	65	LYS
1	A	109	GLU
1	A	177[A]	MET
1	A	177[B]	MET
1	A	238	LYS
1	A	239	MET
1	A	324[A]	GLN
2	B	1	MET
2	B	109	GLU
2	B	207[A]	GLN

Sometimes sidechains can be flipped to improve hydrogen bonding and reduce clashes. All (14) such sidechains are listed below:

Mol	Chain	Res	Type
1	A	45	ASN
1	A	128	HIS
1	A	324[A]	GLN
1	A	325	ASN
1	A	328	GLN

*Continued on next page...*

Continued from previous page...

Mol	Chain	Res	Type
1	A	338	ASN
1	A	376	ASN
2	B	39	GLN
2	B	45	ASN
2	B	119	GLN
2	B	207[A]	GLN
2	B	324[A]	GLN
2	B	328	GLN
2	B	376	ASN

### 5.3.3 RNA ⓘ

There are no RNA molecules in this entry.

## 5.4 Non-standard residues in protein, DNA, RNA chains ⓘ

3 non-standard protein/DNA/RNA residues are modelled in this entry.

In the following table, the Counts columns list the number of bonds (or angles) for which Mogul statistics could be retrieved, the number of bonds (or angles) that are observed in the model and the number of bonds (or angles) that are defined in the Chemical Component Dictionary. The Link column lists molecule types, if any, to which the group is linked. The Z score for a bond length (or angle) is the number of standard deviations the observed value is removed from the expected value. A bond length (or angle) with  $|Z| > 2$  is considered an outlier worth inspection. RMSZ is the root-mean-square of all Z scores of the bond lengths (or angles).

Mol	Type	Chain	Res	Link	Bond lengths			Bond angles		
					Counts	RMSZ	# Z  > 2	Counts	RMSZ	# Z  > 2
1	CSD	A	111[A]	1	4,7,8	3.97	1 (25%)	1,8,10	3.14	1 (100%)
2	CSD	B	111[B]	2	4,7,8	13.57	1 (25%)	1,8,10	3.54	1 (100%)
1	CSD	A	111[B]	1	4,7,8	3.20	1 (25%)	1,8,10	3.27	1 (100%)

In the following table, the Chirals column lists the number of chiral outliers, the number of chiral centers analysed, the number of these observed in the model and the number defined in the Chemical Component Dictionary. Similar counts are reported in the Torsion and Rings columns. '-' means no outliers of that kind were identified.

Mol	Type	Chain	Res	Link	Chirals	Torsions	Rings
1	CSD	A	111[A]	1	-	2/2/6/8	-
2	CSD	B	111[B]	2	-	1/2/6/8	-
1	CSD	A	111[B]	1	-	1/2/6/8	-

All (3) bond length outliers are listed below:

Mol	Chain	Res	Type	Atoms	Z	Observed(Å)	Ideal(Å)
2	B	111[B]	CSD	OD1-SG	27.04	1.72	1.47
1	A	111[A]	CSD	OD1-SG	7.85	1.54	1.47
1	A	111[B]	CSD	OD1-SG	6.28	1.53	1.47

All (3) bond angle outliers are listed below:

Mol	Chain	Res	Type	Atoms	Z	Observed(°)	Ideal(°)
2	B	111[B]	CSD	OD1-SG-CB	-3.54	99.08	105.60
1	A	111[B]	CSD	OD1-SG-CB	-3.27	99.58	105.60
1	A	111[A]	CSD	OD1-SG-CB	-3.14	99.82	105.60

There are no chirality outliers.

All (4) torsion outliers are listed below:

Mol	Chain	Res	Type	Atoms
1	A	111[A]	CSD	N-CA-CB-SG
1	A	111[B]	CSD	N-CA-CB-SG
2	B	111[B]	CSD	N-CA-CB-SG
1	A	111[A]	CSD	CA-CB-SG-OD1

There are no ring outliers.

No monomer is involved in short contacts.

## 5.5 Carbohydrates [i](#)

There are no oligosaccharides in this entry.

## 5.6 Ligand geometry [i](#)

6 ligands are modelled in this entry.

In the following table, the Counts columns list the number of bonds (or angles) for which Mogul statistics could be retrieved, the number of bonds (or angles) that are observed in the model and the number of bonds (or angles) that are defined in the Chemical Component Dictionary. The Link column lists molecule types, if any, to which the group is linked. The Z score for a bond length (or angle) is the number of standard deviations the observed value is removed from the expected value. A bond length (or angle) with  $|Z| > 2$  is considered an outlier worth inspection. RMSZ is the root-mean-square of all Z scores of the bond lengths (or angles).

Mol	Type	Chain	Res	Link	Bond lengths			Bond angles		
					Counts	RMSZ	# Z  > 2	Counts	RMSZ	# Z  > 2
3	SO4	A	602	-	4,4,4	0.37	0	6,6,6	0.06	0
3	SO4	B	603	-	4,4,4	0.37	0	6,6,6	0.08	0
4	GOL	A	604	-	5,5,5	0.70	0	5,5,5	0.79	0
6	AAE	B	611[B]	-	5,5,6	2.70	1 (20%)	4,5,7	1.39	1 (25%)
4	GOL	B	605	-	5,5,5	0.45	0	5,5,5	1.05	0
5	COA	B	601	-	43,50,50	1.18	4 (9%)	56,75,75	0.76	0

In the following table, the Chirals column lists the number of chiral outliers, the number of chiral centers analysed, the number of these observed in the model and the number defined in the Chemical Component Dictionary. Similar counts are reported in the Torsion and Rings columns. '-' means no outliers of that kind were identified.

Mol	Type	Chain	Res	Link	Chirals	Torsions	Rings
4	GOL	B	605	-	-	2/4/4/4	-
4	GOL	A	604	-	-	4/4/4/4	-
6	AAE	B	611[B]	-	-	3/3/3/4	-
5	COA	B	601	-	-	12/44/64/64	0/3/3/3

All (5) bond length outliers are listed below:

Mol	Chain	Res	Type	Atoms	Z	Observed(Å)	Ideal(Å)
6	B	611[B]	AAE	O1-C2	-5.50	1.14	1.42
5	B	601	COA	P2A-O3A	3.99	1.63	1.59
5	B	601	COA	P1A-O3A	3.87	1.63	1.59
5	B	601	COA	C2A-N3A	2.60	1.36	1.32
5	B	601	COA	C8A-N7A	-2.02	1.31	1.34

All (1) bond angle outliers are listed below:

Mol	Chain	Res	Type	Atoms	Z	Observed(°)	Ideal(°)
6	B	611[B]	AAE	O1-C2-C4	2.06	118.67	110.96

There are no chirality outliers.

All (21) torsion outliers are listed below:

Mol	Chain	Res	Type	Atoms
4	A	604	GOL	O1-C1-C2-C3
4	A	604	GOL	C1-C2-C3-O3
5	B	601	COA	O4B-C4B-C5B-O5B
5	B	601	COA	C5B-O5B-P1A-O1A

*Continued on next page...*

*Continued from previous page...*

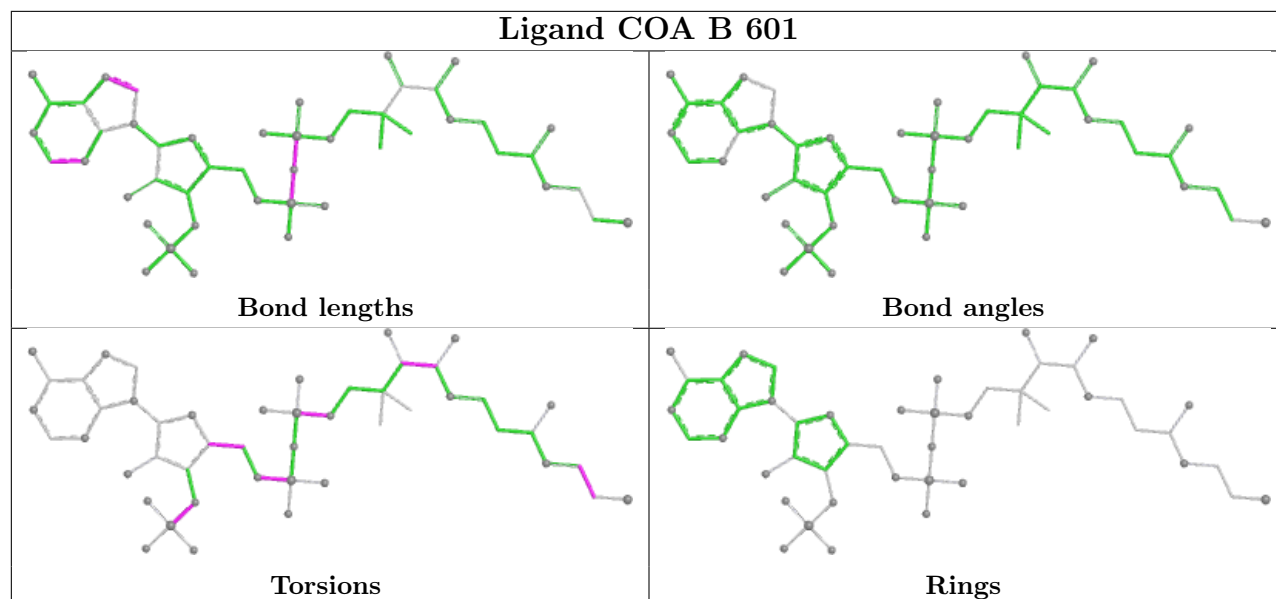
Mol	Chain	Res	Type	Atoms
5	B	601	COA	C5B-O5B-P1A-O2A
5	B	601	COA	C5B-O5B-P1A-O3A
5	B	601	COA	O9P-C9P-CAP-CBP
5	B	601	COA	N8P-C9P-CAP-CBP
5	B	601	COA	N8P-C9P-CAP-OAP
5	B	601	COA	C3B-C4B-C5B-O5B
6	B	611[B]	AAE	C2-C4-C5-O8
6	B	611[B]	AAE	C2-C4-C5-C9
4	B	605	GOL	C1-C2-C3-O3
4	A	604	GOL	O1-C1-C2-O2
4	A	604	GOL	O2-C2-C3-O3
6	B	611[B]	AAE	O1-C2-C4-C5
5	B	601	COA	O9P-C9P-CAP-OAP
5	B	601	COA	S1P-C2P-C3P-N4P
5	B	601	COA	CCP-O6A-P2A-O3A
4	B	605	GOL	O2-C2-C3-O3
5	B	601	COA	C3B-O3B-P3B-O8A

There are no ring outliers.

4 monomers are involved in 18 short contacts:

Mol	Chain	Res	Type	Clashes	Symm-Clashes
4	A	604	GOL	2	0
6	B	611[B]	AAE	7	0
4	B	605	GOL	1	0
5	B	601	COA	9	0

The following is a two-dimensional graphical depiction of Mogul quality analysis of bond lengths, bond angles, torsion angles, and ring geometry for all instances of the Ligand of Interest. In addition, ligands with molecular weight > 250 and outliers as shown on the validation Tables will also be included. For torsion angles, if less than 5% of the Mogul distribution of torsion angles is within 10 degrees of the torsion angle in question, then that torsion angle is considered an outlier. Any bond that is central to one or more torsion angles identified as an outlier by Mogul will be highlighted in the graph. For rings, the root-mean-square deviation (RMSD) between the ring in question and similar rings identified by Mogul is calculated over all ring torsion angles. If the average RMSD is greater than 60 degrees and the minimal RMSD between the ring in question and any Mogul-identified rings is also greater than 60 degrees, then that ring is considered an outlier. The outliers are highlighted in purple. The color gray indicates Mogul did not find sufficient equivalents in the CSD to analyse the geometry.



## 5.7 Other polymers [i](#)

There are no such residues in this entry.

## 5.8 Polymer linkage issues [i](#)

There are no chain breaks in this entry.

## 6 Fit of model and data [i](#)

### 6.1 Protein, DNA and RNA chains [i](#)

In the following table, the column labelled ‘#RSRZ> 2’ contains the number (and percentage) of RSRZ outliers, followed by percent RSRZ outliers for the chain as percentile scores relative to all X-ray entries and entries of similar resolution. The OWAB column contains the minimum, median, 95<sup>th</sup> percentile and maximum values of the occupancy-weighted average B-factor per residue. The column labelled ‘Q< 0.9’ lists the number of (and percentage) of residues with an average occupancy less than 0.9.

Mol	Chain	Analysed	<RSRZ>	#RSRZ>2	OWAB(Å <sup>2</sup> )	Q<0.9
1	A	382/402 (95%)	-0.24	5 (1%) 74 76	9, 21, 33, 46	22 (5%)
2	B	382/403 (94%)	-0.18	13 (3%) 48 50	8, 21, 33, 43	23 (6%)
All	All	764/805 (94%)	-0.21	18 (2%) 59 61	8, 21, 33, 46	45 (5%)

All (18) RSRZ outliers are listed below:

Mol	Chain	Res	Type	RSRZ
2	B	382[A]	ARG	4.1
2	B	292	ALA	4.0
2	B	383[A]	ASN	3.4
1	A	31	GLY	3.3
2	B	359	ILE	2.8
1	A	146	ASN	2.7
2	B	294	THR	2.7
1	A	1	MET	2.6
2	B	3[A]	ILE	2.5
2	B	254	ALA	2.5
2	B	296[A]	THR	2.4
1	A	35	ILE	2.3
2	B	32	LYS	2.2
1	A	190	GLY	2.2
2	B	293	THR	2.2
2	B	362	THR	2.0
2	B	130[A]	ASP	2.0
2	B	1	MET	2.0

### 6.2 Non-standard residues in protein, DNA, RNA chains [i](#)

MODRES-RSR INFOmissingINFO

### 6.3 Carbohydrates [i](#)

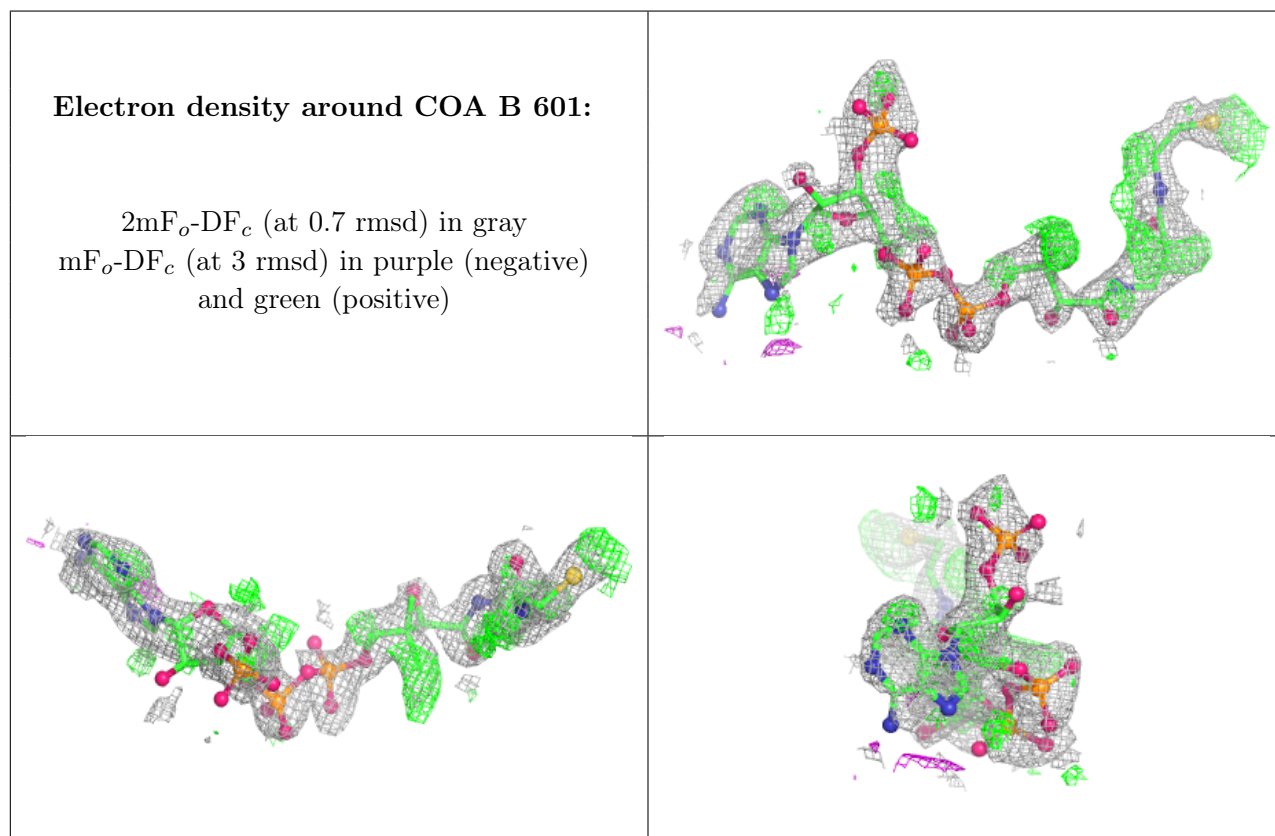
There are no monosaccharides in this entry.

### 6.4 Ligands [i](#)

In the following table, the Atoms column lists the number of modelled atoms in the group and the number defined in the chemical component dictionary. The B-factors column lists the minimum, median, 95<sup>th</sup> percentile and maximum values of B factors of atoms in the group. The column labelled 'Q< 0.9' lists the number of atoms with occupancy less than 0.9.

Mol	Type	Chain	Res	Atoms	RSCC	RSR	B-factors(Å <sup>2</sup> )	Q<0.9
6	AAE	B	611[B]	6/7	0.56	0.30	27,28,29,30	6
5	COA	B	601	48/48	0.64	0.22	31,45,51,52	48
4	GOL	A	604	6/6	0.75	0.18	30,34,35,36	0
4	GOL	B	605	6/6	0.77	0.21	33,34,40,43	0
3	SO4	A	602	5/5	0.88	0.14	49,49,49,50	0
3	SO4	B	603	5/5	0.94	0.10	41,41,42,43	0

The following is a graphical depiction of the model fit to experimental electron density of all instances of the Ligand of Interest. In addition, ligands with molecular weight > 250 and outliers as shown on the geometry validation Tables will also be included. Each fit is shown from different orientation to approximate a three-dimensional view.





## 6.5 Other polymers [i](#)

There are no such residues in this entry.