



Full wwPDB X-ray Structure Validation Report ⓘ

Mar 10, 2018 – 02:49 pm GMT

PDB ID : 4YT1
Title : Human PPAR Gamma Ligand Binding Domain in complex with a Gammma Selective Synthetic Partial Agonist MEKT76
Authors : Oyama, T.; Ohashi, M.; Miyachi, H.; Kusunoki, M.
Deposited on : 2015-03-17
Resolution : 2.20 Å(reported)

This is a Full wwPDB X-ray Structure Validation Report for a publicly released PDB entry.

We welcome your comments at validation@mail.wwpdb.org

A user guide is available at

<https://www.wwpdb.org/validation/2017/XrayValidationReportHelp>

with specific help available everywhere you see the ⓘ symbol.

The following versions of software and data (see [references ⓘ](#)) were used in the production of this report:

MolProbity : 4.02b-467
Mogul : 1.7.3 (157068), CSD as539be (2018)
Xtrriage (Phenix) : 1.13
EDS : trunk30967
Percentile statistics : 20171227.v01 (using entries in the PDB archive December 27th 2017)
Refmac : 5.8.0158
CCP4 : 7.0 (Gargrove)
Ideal geometry (proteins) : Engh & Huber (2001)
Ideal geometry (DNA, RNA) : Parkinson et al. (1996)
Validation Pipeline (wwPDB-VP) : trunk30967

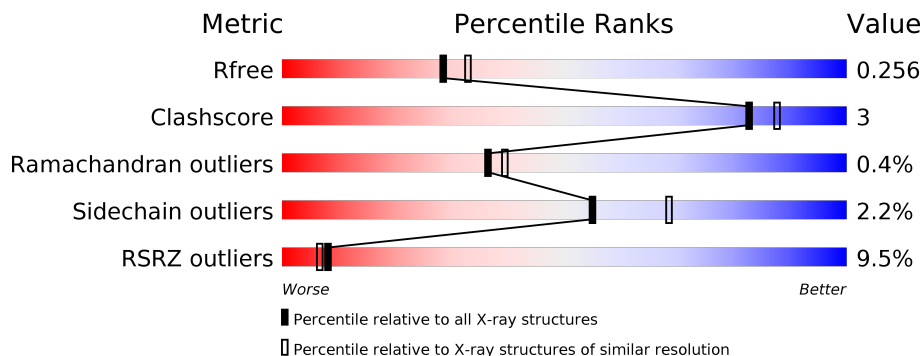
1 Overall quality at a glance

The following experimental techniques were used to determine the structure:

X-RAY DIFFRACTION

The reported resolution of this entry is 2.20 Å.

Percentile scores (ranging between 0-100) for global validation metrics of the entry are shown in the following graphic. The table shows the number of entries on which the scores are based.



Metric	Whole archive (#Entries)	Similar resolution (#Entries, resolution range(Å))
R_{free}	111664	4343 (2.20-2.20)
Clashscore	122126	5027 (2.20-2.20)
Ramachandran outliers	120053	4952 (2.20-2.20)
Sidechain outliers	120020	4953 (2.20-2.20)
RSRZ outliers	108989	4245 (2.20-2.20)

The table below summarises the geometric issues observed across the polymeric chains and their fit to the electron density. The red, orange, yellow and green segments on the lower bar indicate the fraction of residues that contain outliers for ≥ 3 , 2, 1 and 0 types of geometric quality criteria. A grey segment represents the fraction of residues that are not modelled. The numeric value for each fraction is indicated below the corresponding segment, with a dot representing fractions $\leq 5\%$. The upper red bar (where present) indicates the fraction of residues that have poor fit to the electron density. The numeric value is given above the bar.

Mol	Chain	Length	Quality of chain
1	A	286	 7% 83% 7% • 9%
1	B	286	 10% 79% 10% 10%

2 Entry composition

There are 3 unique types of molecules in this entry. The entry contains 4199 atoms, of which 0 are hydrogens and 0 are deuteriums.

In the tables below, the ZeroOcc column contains the number of atoms modelled with zero occupancy, the AltConf column contains the number of residues with at least one atom in alternate conformation and the Trace column contains the number of residues modelled with at most 2 atoms.

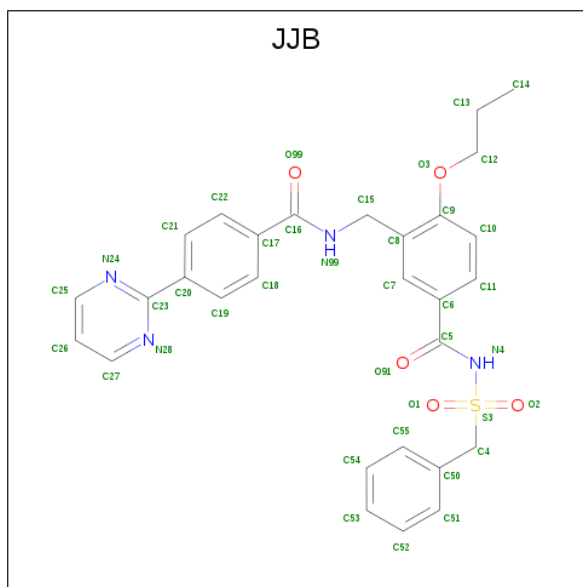
- Molecule 1 is a protein called Peroxisome proliferator-activated receptor gamma.

Mol	Chain	Residues	Atoms					ZeroOcc	AltConf	Trace
			Total	C	N	O	S			
1	A	261	2084	1343	340	391	10	0	0	0
1	B	257	2046	1321	336	379	10	0	0	0

There are 8 discrepancies between the modelled and reference sequences:

Chain	Residue	Modelled	Actual	Comment	Reference
A	191	GLY	-	expression tag	UNP P37231
A	192	SER	-	expression tag	UNP P37231
A	193	HIS	-	expression tag	UNP P37231
A	194	MET	-	expression tag	UNP P37231
B	191	GLY	-	expression tag	UNP P37231
B	192	SER	-	expression tag	UNP P37231
B	193	HIS	-	expression tag	UNP P37231
B	194	MET	-	expression tag	UNP P37231

- Molecule 2 is N-(benzylsulfonyl)-4-propoxy-3-({[4-(pyrimidin-2-yl)benzoyl]amino}methyl)benzamide (three-letter code: JJB) (formula: C₂₉H₂₈N₄O₅S).



Mol	Chain	Residues	Atoms					ZeroOcc	AltConf
			Total	C	N	O	S		
2	B	1	39	29	4	5	1	0	0

- Molecule 3 is water.

Mol	Chain	Residues	Atoms		ZeroOcc	AltConf
3	A	15	Total	O	0	0
			15	15		
3	B	15	Total	O	0	0
			15	15		

4 Data and refinement statistics

Property	Value	Source
Space group	C 1 2 1	Depositor
Cell constants a, b, c, α , β , γ	93.28Å 60.81Å 118.94Å 90.00° 103.74° 90.00°	Depositor
Resolution (Å)	38.51 – 2.20 48.70 – 2.20	Depositor EDS
% Data completeness (in resolution range)	99.7 (38.51-2.20) 99.7 (48.70-2.20)	Depositor EDS
R_{merge}	0.04	Depositor
R_{sym}	(Not available)	Depositor
$\langle I/\sigma(I) \rangle$ ¹	3.58 (at 2.20Å)	Xtrriage
Refinement program	PHENIX (phenix.refine: 1.9_1692)	Depositor
R, R_{free}	0.237 , 0.256 0.237 , 0.256	Depositor DCC
R_{free} test set	1676 reflections (5.06%)	wwPDB-VP
Wilson B-factor (Å ²)	47.8	Xtrriage
Anisotropy	0.583	Xtrriage
Bulk solvent k_{sol} (e/Å ³), B_{sol} (Å ²)	0.36 , 52.0	EDS
L-test for twinning ²	$\langle L \rangle = 0.51$, $\langle L^2 \rangle = 0.34$	Xtrriage
Estimated twinning fraction	No twinning to report.	Xtrriage
F_o, F_c correlation	0.95	EDS
Total number of atoms	4199	wwPDB-VP
Average B, all atoms (Å ²)	63.0	wwPDB-VP

Xtrriage's analysis on translational NCS is as follows: *The largest off-origin peak in the Patterson function is 6.56% of the height of the origin peak. No significant pseudotranslation is detected.*

¹Intensities estimated from amplitudes.

²Theoretical values of $\langle |L| \rangle$, $\langle L^2 \rangle$ for acentric reflections are 0.5, 0.333 respectively for untwinned datasets, and 0.375, 0.2 for perfectly twinned datasets.

5 Model quality

5.1 Standard geometry

Bond lengths and bond angles in the following residue types are not validated in this section: JJB

The Z score for a bond length (or angle) is the number of standard deviations the observed value is removed from the expected value. A bond length (or angle) with $|Z| > 5$ is considered an outlier worth inspection. RMSZ is the root-mean-square of all Z scores of the bond lengths (or angles).

Mol	Chain	Bond lengths		Bond angles	
		RMSZ	# Z >5	RMSZ	# Z >5
1	A	0.21	0/2118	0.36	0/2853
1	B	0.21	0/2079	0.35	0/2799
All	All	0.21	0/4197	0.35	0/5652

There are no bond length outliers.

There are no bond angle outliers.

There are no chirality outliers.

There are no planarity outliers.

5.2 Too-close contacts

In the following table, the Non-H and H(model) columns list the number of non-hydrogen atoms and hydrogen atoms in the chain respectively. The H(added) column lists the number of hydrogen atoms added and optimized by MolProbity. The Clashes column lists the number of clashes within the asymmetric unit, whereas Symm-Clashes lists symmetry related clashes.

Mol	Chain	Non-H	H(model)	H(added)	Clashes	Symm-Clashes
1	A	2084	0	2141	12	0
1	B	2046	0	2094	12	0
2	B	39	0	0	0	0
3	A	15	0	0	1	0
3	B	15	0	0	0	0
All	All	4199	0	4235	23	0

The all-atom clashscore is defined as the number of clashes found per 1000 atoms (including hydrogen atoms). The all-atom clashscore for this structure is 3.

All (23) close contacts within the same asymmetric unit are listed below, sorted by their clash magnitude.

Atom-1	Atom-2	Interatomic distance (Å)	Clash overlap (Å)
1:B:466:HIS:HB3	1:B:469:LEU:HB2	1.68	0.74
1:B:259:GLU:HA	1:B:262:ILE:HG22	1.76	0.66
1:B:288:ARG:NH1	1:B:291:GLU:OE1	2.29	0.65
1:B:325:ILE:HG23	1:B:388:ILE:HD12	1.78	0.65
1:A:322:VAL:HG21	1:A:472:ILE:HD13	1.89	0.55
1:A:353:LEU:HD13	1:A:364:MET:HG2	1.91	0.52
1:A:363:PHE:CE2	1:A:452:LEU:HB3	2.47	0.50
1:A:430:GLN:NE2	3:A:503:HOH:O	2.45	0.49
1:B:266:HIS:HB3	1:B:284:GLY:HA2	1.94	0.48
1:B:299:TYR:OH	1:B:385:ALA:O	2.29	0.48
1:B:214:LEU:HD21	1:B:413:LEU:HD23	1.96	0.47
1:A:379:LEU:HD11	1:A:435:LEU:HD13	1.98	0.45
1:B:334:MET:HG2	1:B:339:VAL:HB	1.97	0.45
1:B:247:PHE:HZ	1:B:257:MET:HE2	1.82	0.45
1:A:357:ARG:HD2	1:A:358:LYS:O	2.19	0.43
1:A:276:GLU:HB3	1:A:279:ILE:HG12	2.01	0.42
1:A:350:ARG:NH2	1:A:365:GLU:OE1	2.47	0.42
1:B:251:ASP:H	1:B:254:SER:HG	1.67	0.42
1:A:235:ALA:HA	1:A:240:LYS:HE2	2.01	0.42
1:B:230:LYS:NZ	1:B:379:LEU:O	2.39	0.41
1:A:226:PHE:HA	1:A:227:PRO:HD3	1.82	0.41
1:A:229:THR:HG23	1:A:232:LYS:H	1.86	0.40
1:A:443:ARG:HG3	1:B:440:THR:HG23	2.03	0.40

There are no symmetry-related clashes.

5.3 Torsion angles [i](#)

5.3.1 Protein backbone [i](#)

In the following table, the Percentiles column shows the percent Ramachandran outliers of the chain as a percentile score with respect to all X-ray entries followed by that with respect to entries of similar resolution.

The Analysed column shows the number of residues for which the backbone conformation was analysed, and the total number of residues.

Mol	Chain	Analysed	Favoured	Allowed	Outliers	Percentiles	
1	A	257/286 (90%)	252 (98%)	5 (2%)	0	100	100
1	B	251/286 (88%)	241 (96%)	8 (3%)	2 (1%)	21	20
All	All	508/572 (89%)	493 (97%)	13 (3%)	2 (0%)	36	39

All (2) Ramachandran outliers are listed below:

Mol	Chain	Res	Type
1	B	227	PRO
1	B	460	GLU

5.3.2 Protein sidechains [i](#)

In the following table, the Percentiles column shows the percent sidechain outliers of the chain as a percentile score with respect to all X-ray entries followed by that with respect to entries of similar resolution.

The Analysed column shows the number of residues for which the sidechain conformation was analysed, and the total number of residues.

Mol	Chain	Analysed	Rotameric	Outliers	Percentiles	
1	A	233/257 (91%)	230 (99%)	3 (1%)	71	83
1	B	226/257 (88%)	219 (97%)	7 (3%)	43	55
All	All	459/514 (89%)	449 (98%)	10 (2%)	55	68

All (10) residues with a non-rotameric sidechain are listed below:

Mol	Chain	Res	Type
1	A	229	THR
1	A	362	ASP
1	A	363	PHE
1	B	261	LYS
1	B	343	GLU
1	B	357	ARG
1	B	358	LYS
1	B	363	PHE
1	B	459	THR
1	B	469	LEU

Some sidechains can be flipped to improve hydrogen bonding and reduce clashes. There are no such sidechains identified.

5.3.3 RNA [i](#)

There are no RNA molecules in this entry.

5.4 Non-standard residues in protein, DNA, RNA chains [i](#)

There are no non-standard protein/DNA/RNA residues in this entry.

5.5 Carbohydrates [i](#)

There are no carbohydrates in this entry.

5.6 Ligand geometry [i](#)

1 ligand is modelled in this entry.

In the following table, the Counts columns list the number of bonds (or angles) for which Mogul statistics could be retrieved, the number of bonds (or angles) that are observed in the model and the number of bonds (or angles) that are defined in the Chemical Component Dictionary. The Link column lists molecule types, if any, to which the group is linked. The Z score for a bond length (or angle) is the number of standard deviations the observed value is removed from the expected value. A bond length (or angle) with $|Z| > 2$ is considered an outlier worth inspection. RMSZ is the root-mean-square of all Z scores of the bond lengths (or angles).

Mol	Type	Chain	Res	Link	Bond lengths			Bond angles		
					Counts	RMSZ	# Z > 2	Counts	RMSZ	# Z > 2
2	JJB	B	901	-	42,42,42	1.30	4 (9%)	55,57,57	1.75	12 (21%)

In the following table, the Chirals column lists the number of chiral outliers, the number of chiral centers analysed, the number of these observed in the model and the number defined in the Chemical Component Dictionary. Similar counts are reported in the Torsion and Rings columns. '-' means no outliers of that kind were identified.

Mol	Type	Chain	Res	Link	Chirals	Torsions	Rings
2	JJB	B	901	-	-	0/31/31/31	0/4/4/4

All (4) bond length outliers are listed below:

Mol	Chain	Res	Type	Atoms	Z	Observed(Å)	Ideal(Å)
2	B	901	JJB	O2-S3	2.84	1.47	1.43
2	B	901	JJB	O1-S3	2.91	1.47	1.43
2	B	901	JJB	C16-N99	4.40	1.43	1.33
2	B	901	JJB	C5-N4	4.41	1.44	1.39

All (12) bond angle outliers are listed below:

Mol	Chain	Res	Type	Atoms	Z	Observed(°)	Ideal(°)
2	B	901	JJB	O1-S3-O2	-6.36	109.20	119.31
2	B	901	JJB	N28-C23-N24	-2.57	119.68	125.47
2	B	901	JJB	C26-C27-N28	-2.03	120.08	123.43
2	B	901	JJB	O3-C12-C13	2.09	119.76	109.86
2	B	901	JJB	C20-C23-N24	2.35	120.00	117.40
2	B	901	JJB	C50-C4-S3	2.39	117.60	112.41
2	B	901	JJB	C20-C23-N28	2.63	120.31	117.40
2	B	901	JJB	C6-C5-N4	2.90	119.58	116.03
2	B	901	JJB	O3-C9-C8	3.05	119.66	115.66
2	B	901	JJB	C8-C15-N99	3.80	121.33	113.05
2	B	901	JJB	C27-N28-C23	4.05	120.61	116.12
2	B	901	JJB	C25-N24-C23	4.10	120.67	116.12

There are no chirality outliers.

There are no torsion outliers.

There are no ring outliers.

No monomer is involved in short contacts.

5.7 Other polymers [i](#)

There are no such residues in this entry.

5.8 Polymer linkage issues [i](#)

There are no chain breaks in this entry.

6 Fit of model and data

6.1 Protein, DNA and RNA chains

In the following table, the column labelled ‘#RSRZ > 2’ contains the number (and percentage) of RSRZ outliers, followed by percent RSRZ outliers for the chain as percentile scores relative to all X-ray entries and entries of similar resolution. The OWAB column contains the minimum, median, 95th percentile and maximum values of the occupancy-weighted average B-factor per residue. The column labelled ‘Q < 0.9’ lists the number of (and percentage) of residues with an average occupancy less than 0.9.

Mol	Chain	Analysed	<RSRZ>	#RSRZ>2	OWAB(Å ²)	Q<0.9
1	A	261/286 (91%)	0.60	19 (7%) 15 13	40, 59, 88, 97	0
1	B	257/286 (89%)	0.85	30 (11%) 4 3	39, 58, 97, 120	0
All	All	518/572 (90%)	0.72	49 (9%) 8 7	39, 59, 93, 120	0

All (49) RSRZ outliers are listed below:

Mol	Chain	Res	Type	RSRZ
1	B	464	SER	6.8
1	B	240	LYS	6.5
1	A	363	PHE	6.2
1	B	363	PHE	5.1
1	B	256	MET	4.8
1	A	360	PHE	4.0
1	A	362	ASP	3.9
1	B	458	LYS	3.9
1	B	465	LEU	3.8
1	A	359	PRO	3.8
1	B	238	THR	3.6
1	A	356	LEU	3.5
1	B	463	MET	3.4
1	B	260	ASP	3.2
1	B	462	ASP	3.1
1	B	352	PHE	3.1
1	B	452	LEU	3.0
1	B	275	LYS	3.0
1	A	253	ASN	3.0
1	B	287	PHE	2.8
1	B	358	LYS	2.8
1	A	452	LEU	2.8
1	A	261	LYS	2.7
1	A	456	ILE	2.7

Continued on next page...

Continued from previous page...

Mol	Chain	Res	Type	RSRZ
1	B	318	LEU	2.7
1	B	207	GLU	2.6
1	B	259	GLU	2.6
1	B	360	PHE	2.5
1	A	257	MET	2.5
1	B	290	VAL	2.4
1	B	252	MET	2.4
1	B	266	HIS	2.4
1	B	357	ARG	2.4
1	A	282	PHE	2.3
1	A	457	LYS	2.3
1	B	456	ILE	2.3
1	A	252	MET	2.3
1	A	242	THR	2.3
1	A	454	GLN	2.2
1	B	354	LYS	2.2
1	A	476	LEU	2.2
1	A	343	GLU	2.2
1	A	207	GLU	2.1
1	A	286	GLN	2.1
1	B	461	THR	2.1
1	B	277	VAL	2.1
1	B	311	LEU	2.1
1	B	261	LYS	2.1
1	B	356	LEU	2.0

6.2 Non-standard residues in protein, DNA, RNA chains [i](#)

There are no non-standard protein/DNA/RNA residues in this entry.

6.3 Carbohydrates [i](#)

There are no carbohydrates in this entry.

6.4 Ligands [i](#)

In the following table, the Atoms column lists the number of modelled atoms in the group and the number defined in the chemical component dictionary. The B-factors column lists the minimum, median, 95th percentile and maximum values of B factors of atoms in the group. The column labelled 'Q< 0.9' lists the number of atoms with occupancy less than 0.9.

Mol	Type	Chain	Res	Atoms	RSCC	RSR	B-factors(\AA^2)	Q<0.9
2	JJB	B	901	39/39	0.80	0.23	67,80,105,186	0

6.5 Other polymers [i](#)

There are no such residues in this entry.