



# Full wwPDB X-ray Structure Validation Report ⓘ

Sep 18, 2023 – 01:36 AM EDT

PDB ID : 4YWB  
Title : Structure of rat cytosolic pepck in complex with 3-mercaptopicolinic acid and oxalic acid  
Authors : Balan, M.D.; Johnson, T.A.; Lotosky, W.R.; Mcleod, M.J.; Holyoak, T.  
Deposited on : 2015-03-20  
Resolution : 1.50 Å(reported)

This is a Full wwPDB X-ray Structure Validation Report for a publicly released PDB entry.

We welcome your comments at [validation@mail.wwpdb.org](mailto:validation@mail.wwpdb.org)

A user guide is available at

<https://www.wwpdb.org/validation/2017/XrayValidationReportHelp>

with specific help available everywhere you see the ⓘ symbol.

The types of validation reports are described at

<http://www.wwpdb.org/validation/2017/FAQs#types>.

---

The following versions of software and data (see [references ⓘ](#)) were used in the production of this report:

MolProbity : 4.02b-467  
Mogul : 1.8.5 (274361), CSD as541be (2020)  
Xtriage (Phenix) : 1.13  
EDS : 2.35.1  
Percentile statistics : 20191225.v01 (using entries in the PDB archive December 25th 2019)  
Refmac : 5.8.0158  
CCP4 : 7.0.044 (Gargrove)  
Ideal geometry (proteins) : Engh & Huber (2001)  
Ideal geometry (DNA, RNA) : Parkinson et al. (1996)  
Validation Pipeline (wwPDB-VP) : 2.35.1

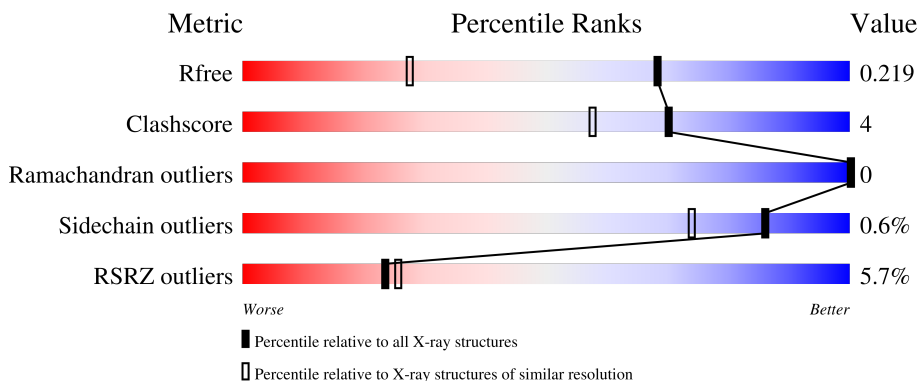
# 1 Overall quality at a glance

The following experimental techniques were used to determine the structure:

*X-RAY DIFFRACTION*

The reported resolution of this entry is 1.50 Å.

Percentile scores (ranging between 0-100) for global validation metrics of the entry are shown in the following graphic. The table shows the number of entries on which the scores are based.



Metric	Whole archive (#Entries)	Similar resolution (#Entries, resolution range(Å))
$R_{free}$	130704	2936 (1.50-1.50)
Clashscore	141614	3144 (1.50-1.50)
Ramachandran outliers	138981	3066 (1.50-1.50)
Sidechain outliers	138945	3064 (1.50-1.50)
RSRZ outliers	127900	2884 (1.50-1.50)

The table below summarises the geometric issues observed across the polymeric chains and their fit to the electron density. The red, orange, yellow and green segments of the lower bar indicate the fraction of residues that contain outliers for  $\geq 3$ , 2, 1 and 0 types of geometric quality criteria respectively. A grey segment represents the fraction of residues that are not modelled. The numeric value for each fraction is indicated below the corresponding segment, with a dot representing fractions  $\leq 5\%$ . The upper red bar (where present) indicates the fraction of residues that have poor fit to the electron density. The numeric value is given above the bar.

Mol	Chain	Length	Quality of chain
1	A	622	 7% 89% 9%
1	C	622	 4% 91% 6%

## 2 Entry composition [i](#)

There are 7 unique types of molecules in this entry. The entry contains 11157 atoms, of which 0 are hydrogens and 0 are deuteriums.

In the tables below, the ZeroOcc column contains the number of atoms modelled with zero occupancy, the AltConf column contains the number of residues with at least one atom in alternate conformation and the Trace column contains the number of residues modelled with at most 2 atoms.

- Molecule 1 is a protein called Phosphoenolpyruvate carboxykinase, cytosolic [GTP].

Mol	Chain	Residues	Atoms					ZeroOcc	AltConf	Trace
			Total	C	N	O	S			
1	A	612	4902	3145	843	883	31	0	18	2
1	C	606	4846	3107	823	885	31	0	14	0

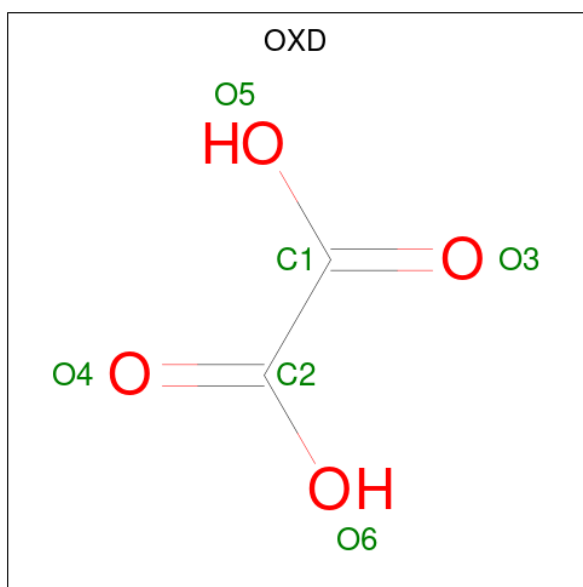
- Molecule 2 is MANGANESE (II) ION (three-letter code: MN) (formula: Mn).

Mol	Chain	Residues	Atoms		ZeroOcc	AltConf
2	A	2	Total	Mn	0	0
			2	2		
2	C	2	Total	Mn	0	0
			2	2		

- Molecule 3 is SODIUM ION (three-letter code: NA) (formula: Na).

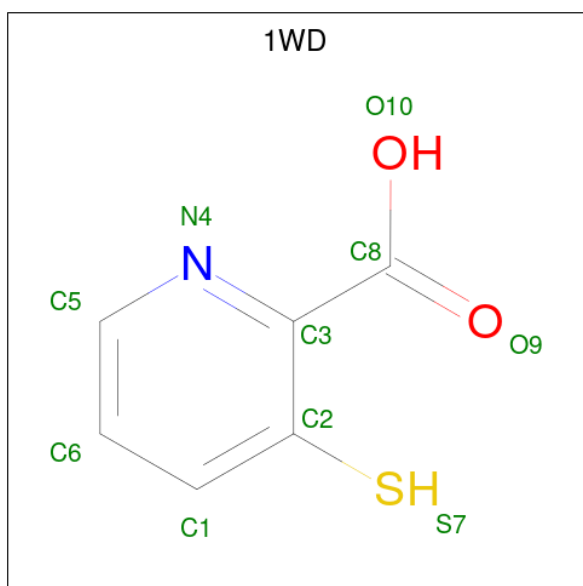
Mol	Chain	Residues	Atoms		ZeroOcc	AltConf
3	A	1	Total	Na	0	0
			1	1		
3	C	1	Total	Na	0	0
			1	1		

- Molecule 4 is OXALIC ACID (three-letter code: OXD) (formula: C<sub>2</sub>H<sub>2</sub>O<sub>4</sub>).



Mol	Chain	Residues	Atoms			ZeroOcc	AltConf
4	A	1	Total	C	O	0	0
			6	2	4		
4	C	1	Total	C	O	0	0
			6	2	4		

- Molecule 5 is 3-sulfanylpyridine-2-carboxylic acid (three-letter code: 1WD) (formula:  $C_6H_5NO_2S$ ).



Mol	Chain	Residues	Atoms					ZeroOcc	AltConf
5	A	1	Total	C	N	O	S	0	0
			10	6	1	2	1		

*Continued on next page...*

*Continued from previous page...*

Mol	Chain	Residues	Atoms					ZeroOcc	AltConf
			Total	C	N	O	S		
5	C	1	10	6	1	2	1	0	0

- Molecule 6 is CHLORIDE ION (three-letter code: CL) (formula: Cl).

Mol	Chain	Residues	Atoms		ZeroOcc	AltConf
6	A	1	Total	Cl	0	0
			1	1		
6	C	1	Total	Cl	0	0
			1	1		

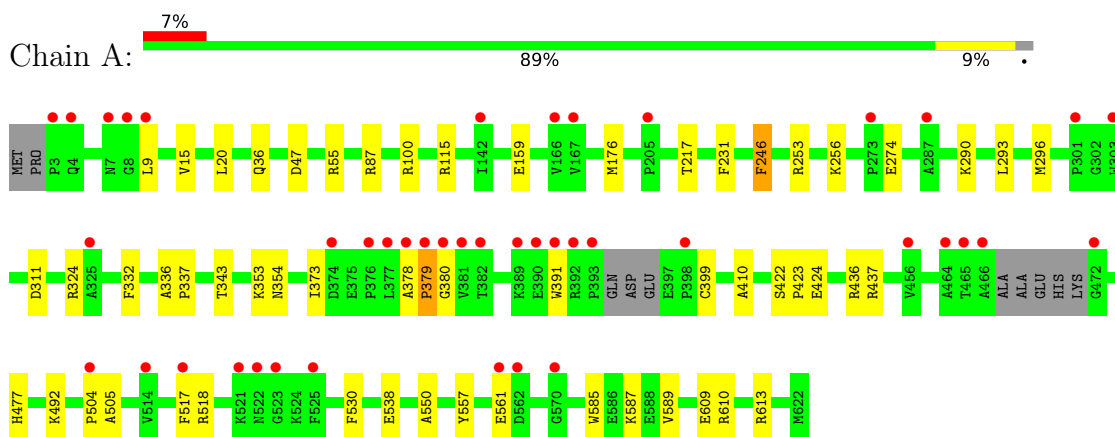
- Molecule 7 is water.

Mol	Chain	Residues	Atoms		ZeroOcc	AltConf
7	A	683	Total	O	0	0
			683	683		
7	C	686	Total	O	0	0
			686	686		

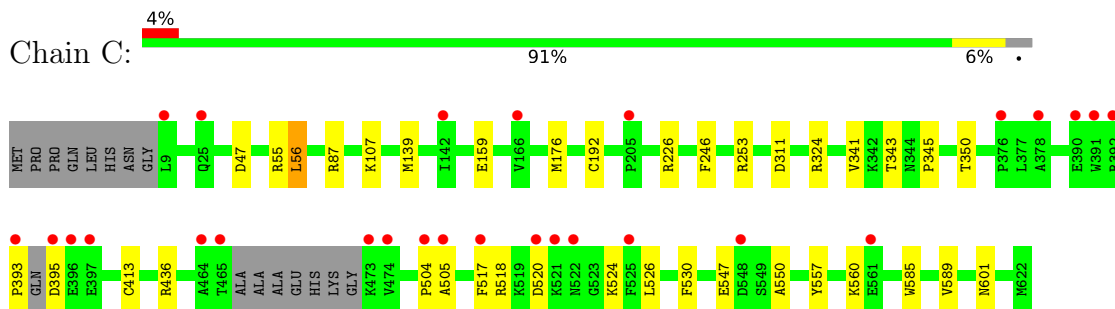
### 3 Residue-property plots [i](#)

These plots are drawn for all protein, RNA, DNA and oligosaccharide chains in the entry. The first graphic for a chain summarises the proportions of the various outlier classes displayed in the second graphic. The second graphic shows the sequence view annotated by issues in geometry and electron density. Residues are color-coded according to the number of geometric quality criteria for which they contain at least one outlier: green = 0, yellow = 1, orange = 2 and red = 3 or more. A red dot above a residue indicates a poor fit to the electron density ( $RSRZ > 2$ ). Stretches of 2 or more consecutive residues without any outlier are shown as a green connector. Residues present in the sample, but not in the model, are shown in grey.

- Molecule 1: Phosphoenolpyruvate carboxykinase, cytosolic [GTP]



- Molecule 1: Phosphoenolpyruvate carboxykinase, cytosolic [GTP]



## 4 Data and refinement statistics

Property	Value	Source
Space group	P 1 21 1	Depositor
Cell constants a, b, c, $\alpha$ , $\beta$ , $\gamma$	64.12Å 118.73Å 86.39Å 90.00° 107.27° 90.00°	Depositor
Resolution (Å)	27.21 – 1.50 27.21 – 1.50	Depositor EDS
% Data completeness (in resolution range)	97.1 (27.21-1.50) 97.2 (27.21-1.50)	Depositor EDS
$R_{merge}$	0.08	Depositor
$R_{sym}$	(Not available)	Depositor
$\langle I/\sigma(I) \rangle$ <sup>1</sup>	2.42 (at 1.50Å)	Xtrriage
Refinement program	REFMAC 5.7.0029	Depositor
R, $R_{free}$	0.173 , 0.210 0.183 , 0.219	Depositor DCC
$R_{free}$ test set	9676 reflections (5.05%)	wwPDB-VP
Wilson B-factor (Å <sup>2</sup> )	19.8	Xtrriage
Anisotropy	0.141	Xtrriage
Bulk solvent $k_{sol}$ (e/Å <sup>3</sup> ), $B_{sol}$ (Å <sup>2</sup> )	0.35 , 42.8	EDS
L-test for twinning <sup>2</sup>	$\langle  L  \rangle = 0.51$ , $\langle L^2 \rangle = 0.34$	Xtrriage
Estimated twinning fraction	No twinning to report.	Xtrriage
$F_o, F_c$ correlation	0.97	EDS
Total number of atoms	11157	wwPDB-VP
Average B, all atoms (Å <sup>2</sup> )	25.0	wwPDB-VP

Xtrriage's analysis on translational NCS is as follows: *The analyses of the Patterson function reveals a significant off-origin peak that is 78.54 % of the origin peak, indicating pseudo-translational symmetry. The chance of finding a peak of this or larger height randomly in a structure without pseudo-translational symmetry is equal to 6.7634e-07. The detected translational NCS is most likely also responsible for the elevated intensity ratio.*

<sup>1</sup>Intensities estimated from amplitudes.

<sup>2</sup>Theoretical values of  $\langle |L| \rangle$ ,  $\langle L^2 \rangle$  for acentric reflections are 0.5, 0.333 respectively for untwinned datasets, and 0.375, 0.2 for perfectly twinned datasets.

## 5 Model quality [i](#)

### 5.1 Standard geometry [i](#)

Bond lengths and bond angles in the following residue types are not validated in this section: CL, OXD, NA, MN, 1WD

The Z score for a bond length (or angle) is the number of standard deviations the observed value is removed from the expected value. A bond length (or angle) with  $|Z| > 5$  is considered an outlier worth inspection. RMSZ is the root-mean-square of all Z scores of the bond lengths (or angles).

Mol	Chain	Bond lengths		Bond angles	
		RMSZ	# Z  >5	RMSZ	# Z  >5
1	A	0.80	1/5077 (0.0%)	0.91	10/6863 (0.1%)
1	C	0.80	0/5012	0.91	8/6780 (0.1%)
All	All	0.80	1/10089 (0.0%)	0.91	18/13643 (0.1%)

All (1) bond length outliers are listed below:

Mol	Chain	Res	Type	Atoms	Z	Observed(Å)	Ideal(Å)
1	A	159	GLU	CD-OE2	7.07	1.33	1.25

All (18) bond angle outliers are listed below:

Mol	Chain	Res	Type	Atoms	Z	Observed(°)	Ideal(°)
1	A	311	ASP	CB-CG-OD1	12.14	129.22	118.30
1	A	253	ARG	NE-CZ-NH1	7.62	124.11	120.30
1	C	47	ASP	CB-CG-OD1	7.01	124.61	118.30
1	A	324	ARG	NE-CZ-NH2	-6.75	116.92	120.30
1	C	47	ASP	CB-CG-OD2	-6.50	112.45	118.30
1	C	139	MET	CG-SD-CE	-6.38	90.00	100.20
1	A	87	ARG	NE-CZ-NH1	6.37	123.48	120.30
1	C	253	ARG	NE-CZ-NH1	6.31	123.46	120.30
1	A	246	PHE	CB-CG-CD2	-5.88	116.68	120.80
1	C	56	LEU	CA-CB-CG	5.80	128.64	115.30
1	A	311	ASP	CB-CG-OD2	-5.67	113.19	118.30
1	C	311	ASP	CB-CG-OD1	5.67	123.40	118.30
1	A	246	PHE	CB-CG-CD1	5.38	124.56	120.80
1	A	47	ASP	CB-CG-OD1	5.31	123.08	118.30
1	C	87	ARG	NE-CZ-NH1	5.29	122.94	120.30
1	A	437	ARG	NE-CZ-NH1	5.29	122.94	120.30
1	A	518	ARG	NE-CZ-NH1	5.17	122.88	120.30
1	C	518	ARG	NE-CZ-NH2	-5.10	117.75	120.30



There are no chirality outliers.

There are no planarity outliers.

## 5.2 Too-close contacts

In the following table, the Non-H and H(model) columns list the number of non-hydrogen atoms and hydrogen atoms in the chain respectively. The H(added) column lists the number of hydrogen atoms added and optimized by MolProbity. The Clashes column lists the number of clashes within the asymmetric unit, whereas Symm-Clashes lists symmetry-related clashes.

Mol	Chain	Non-H	H(model)	H(added)	Clashes	Symm-Clashes
1	A	4902	0	4921	52	0
1	C	4846	0	4838	18	0
2	A	2	0	0	0	0
2	C	2	0	0	0	0
3	A	1	0	0	0	0
3	C	1	0	0	0	0
4	A	6	0	0	0	0
4	C	6	0	0	0	0
5	A	10	0	3	1	0
5	C	10	0	3	1	0
6	A	1	0	0	0	0
6	C	1	0	0	0	0
7	A	683	0	0	25	0
7	C	686	0	0	6	0
All	All	11157	0	9765	70	0

The all-atom clashscore is defined as the number of clashes found per 1000 atoms (including hydrogen atoms). The all-atom clashscore for this structure is 4.

All (70) close contacts within the same asymmetric unit are listed below, sorted by their clash magnitude.

Atom-1	Atom-2	Interatomic distance (Å)	Clash overlap (Å)
1:A:380[B]:GLY:HA3	7:A:801:HOH:O	1.49	1.11
1:A:477[B]:HIS:ND1	7:A:802:HOH:O	2.08	0.86
1:A:492[A]:LYS:HD2	7:A:1075:HOH:O	1.77	0.84
1:A:115[B]:ARG:NH2	7:A:804:HOH:O	2.11	0.82
1:A:380[A]:GLY:N	7:A:801:HOH:O	1.74	0.80
1:A:380[B]:GLY:CA	7:A:801:HOH:O	2.15	0.80
1:A:379[B]:PRO:O	7:A:801:HOH:O	1.99	0.79
1:A:55:ARG:NH1	7:A:806:HOH:O	2.16	0.79
1:A:100[A]:ARG:HD2	7:A:824:HOH:O	1.86	0.75

*Continued on next page...*

*Continued from previous page...*

Atom-1	Atom-2	Interatomic distance (Å)	Clash overlap (Å)
1:A:293:LEU:HD12	1:A:296:MET:HE3	1.70	0.72
1:A:517:PHE:HB2	5:A:705:1WD:O10	1.90	0.71
1:A:613[B]:ARG:NH2	7:A:807:HOH:O	2.22	0.71
1:A:436:ARG:HG3	1:A:517:PHE:CG	2.26	0.70
1:A:373:ILE:O	7:A:803:HOH:O	2.10	0.69
1:C:517:PHE:HB2	5:C:705:1WD:O10	1.91	0.69
1:A:613[B]:ARG:HB2	1:A:613[B]:ARG:HH11	1.56	0.69
1:A:9:LEU:HB3	1:A:36[A]:GLN:NE2	2.10	0.66
1:A:609:GLU:OE2	1:A:613[B]:ARG:HD2	1.97	0.65
1:A:538:GLU:OE2	7:A:805:HOH:O	2.15	0.63
1:A:587[B]:LYS:HD2	7:A:851:HOH:O	1.98	0.63
1:A:436:ARG:HD3	1:A:517:PHE:CE1	2.34	0.62
1:C:55[A]:ARG:HD2	7:C:805:HOH:O	2.01	0.60
1:A:274:GLU:HG3	7:A:1300:HOH:O	2.03	0.59
1:C:560:LYS:O	7:C:802:HOH:O	2.17	0.54
1:A:587[B]:LYS:CD	7:A:851:HOH:O	2.54	0.54
1:A:343:THR:HG22	1:A:530:PHE:CE1	2.42	0.54
1:A:256:LYS:HE3	7:A:918:HOH:O	2.08	0.54
1:A:290:LYS:HD3	7:A:816:HOH:O	2.07	0.53
1:A:613[B]:ARG:HH11	1:A:613[B]:ARG:CB	2.20	0.52
1:A:504:PRO:O	1:A:505:ALA:HB3	2.09	0.52
1:C:550:ALA:HB1	1:C:557:TYR:HB3	1.91	0.52
1:A:353:LYS:HG2	1:A:354:ASN:ND2	2.24	0.51
1:C:107:LYS:HG3	1:C:601:ASN:ND2	2.25	0.51
1:C:436:ARG:HG3	1:C:517:PHE:CG	2.45	0.51
1:A:9:LEU:HD22	1:A:36[B]:GLN:NE2	2.25	0.51
1:A:587[B]:LYS:NZ	7:A:817:HOH:O	2.43	0.51
1:A:55:ARG:NH2	7:A:818:HOH:O	2.44	0.50
1:A:436:ARG:CG	1:A:517:PHE:CG	2.94	0.50
1:A:613[B]:ARG:CZ	7:A:807:HOH:O	2.59	0.49
1:A:610:ARG:HA	1:A:613[B]:ARG:NH1	2.28	0.49
1:C:504:PRO:O	1:C:505:ALA:HB3	2.13	0.49
1:A:609:GLU:CD	7:A:813:HOH:O	2.50	0.49
1:A:9:LEU:HB3	1:A:36[A]:GLN:CD	2.32	0.48
1:C:226:ARG:HB2	7:C:1121:HOH:O	2.13	0.47
1:A:436:ARG:HG3	1:A:517:PHE:CD1	2.50	0.47
1:C:324:ARG:NH2	7:C:806:HOH:O	2.42	0.47
1:A:100[A]:ARG:NH1	7:A:824:HOH:O	2.48	0.47
1:A:336:ALA:HB3	1:A:337:PRO:HD3	1.97	0.47
1:A:380[A]:GLY:CA	7:A:801:HOH:O	2.44	0.46
1:A:391:TRP:CD2	1:A:399:CYS:HB3	2.51	0.45

*Continued on next page...*

Continued from previous page...

Atom-1	Atom-2	Interatomic distance (Å)	Clash overlap (Å)
1:A:436:ARG:HG2	1:A:517:PHE:CD2	2.52	0.44
1:A:293:LEU:CD1	1:A:296:MET:HE3	2.46	0.44
1:C:547:GLU:HG3	7:C:838:HOH:O	2.18	0.44
1:C:585:TRP:O	1:C:589[B]:VAL:HG22	2.19	0.43
1:C:524:LYS:HA	7:C:1104:HOH:O	2.17	0.43
1:C:350:THR:OG1	1:C:413:CYS:HA	2.19	0.43
1:A:422[B]:SER:OG	1:A:424:GLU:OE1	2.37	0.42
1:A:561:GLU:HA	7:A:881:HOH:O	2.19	0.42
1:C:393:PRO:O	1:C:395:ASP:N	2.52	0.42
1:C:520:ASP:HB3	1:C:526:LEU:HD21	2.01	0.42
1:A:217:THR:HA	1:A:231:PHE:O	2.19	0.42
1:C:343:THR:HG22	1:C:530:PHE:CE1	2.55	0.41
1:C:159:GLU:HA	1:C:192:CYS:HB2	2.02	0.41
1:A:550:ALA:HB1	1:A:557:TYR:HB3	2.03	0.41
1:A:423:PRO:HG2	7:A:839:HOH:O	2.21	0.41
1:A:15:VAL:HG21	1:A:20:LEU:HG	2.03	0.41
1:A:332:PHE:CE2	1:A:410:ALA:HA	2.56	0.41
1:A:378:ALA:HB1	1:A:379[A]:PRO:HD2	2.02	0.41
1:C:341:VAL:O	1:C:345:PRO:HD3	2.21	0.40
1:A:585:TRP:O	1:A:589:VAL:HG22	2.20	0.40

There are no symmetry-related clashes.

## 5.3 Torsion angles [i](#)

### 5.3.1 Protein backbone [i](#)

In the following table, the Percentiles column shows the percent Ramachandran outliers of the chain as a percentile score with respect to all X-ray entries followed by that with respect to entries of similar resolution.

The Analysed column shows the number of residues for which the backbone conformation was analysed, and the total number of residues.

Mol	Chain	Analysed	Favoured	Allowed	Outliers	Percentiles
1	A	624/622 (100%)	603 (97%)	21 (3%)	0	100 100
1	C	614/622 (99%)	598 (97%)	16 (3%)	0	100 100
All	All	1238/1244 (100%)	1201 (97%)	37 (3%)	0	100 100

There are no Ramachandran outliers to report.

### 5.3.2 Protein sidechains [i](#)

In the following table, the Percentiles column shows the percent sidechain outliers of the chain as a percentile score with respect to all X-ray entries followed by that with respect to entries of similar resolution.

The Analysed column shows the number of residues for which the sidechain conformation was analysed, and the total number of residues.

Mol	Chain	Analysed	Rotameric	Outliers	Percentiles	
1	A	526/519 (101%)	522 (99%)	4 (1%)	81	66
1	C	522/519 (101%)	519 (99%)	3 (1%)	86	74
All	All	1048/1038 (101%)	1041 (99%)	7 (1%)	86	69

All (7) residues with a non-rotameric sidechain are listed below:

Mol	Chain	Res	Type
1	A	176	MET
1	A	246	PHE
1	A	379[A]	PRO
1	A	379[B]	PRO
1	C	56	LEU
1	C	176	MET
1	C	246	PHE

Sometimes sidechains can be flipped to improve hydrogen bonding and reduce clashes. There are no such sidechains identified.

### 5.3.3 RNA [i](#)

There are no RNA molecules in this entry.

## 5.4 Non-standard residues in protein, DNA, RNA chains [i](#)

There are no non-standard protein/DNA/RNA residues in this entry.

## 5.5 Carbohydrates [i](#)

There are no monosaccharides in this entry.

## 5.6 Ligand geometry [i](#)

Of 12 ligands modelled in this entry, 8 are monoatomic - leaving 4 for Mogul analysis.

In the following table, the Counts columns list the number of bonds (or angles) for which Mogul statistics could be retrieved, the number of bonds (or angles) that are observed in the model and the number of bonds (or angles) that are defined in the Chemical Component Dictionary. The Link column lists molecule types, if any, to which the group is linked. The Z score for a bond length (or angle) is the number of standard deviations the observed value is removed from the expected value. A bond length (or angle) with  $|Z| > 2$  is considered an outlier worth inspection. RMSZ is the root-mean-square of all Z scores of the bond lengths (or angles).

Mol	Type	Chain	Res	Link	Bond lengths			Bond angles		
					Counts	RMSZ	# Z  > 2	Counts	RMSZ	# Z  > 2
4	OXD	C	704	2	5,5,5	2.00	3 (60%)	6,6,6	1.68	1 (16%)
5	1WD	C	705	1	10,10,10	1.34	2 (20%)	11,13,13	1.47	2 (18%)
4	OXD	A	704	2	5,5,5	2.04	2 (40%)	6,6,6	2.00	3 (50%)
5	1WD	A	705	1	10,10,10	1.27	1 (10%)	11,13,13	1.66	4 (36%)

In the following table, the Chirals column lists the number of chiral outliers, the number of chiral centers analysed, the number of these observed in the model and the number defined in the Chemical Component Dictionary. Similar counts are reported in the Torsion and Rings columns. '-' means no outliers of that kind were identified.

Mol	Type	Chain	Res	Link	Chirals	Torsions	Rings
4	OXD	C	704	2	-	1/4/4/4	-
5	1WD	C	705	1	-	0/4/4/4	0/1/1/1
4	OXD	A	704	2	-	0/4/4/4	-
5	1WD	A	705	1	-	0/4/4/4	0/1/1/1

All (8) bond length outliers are listed below:

Mol	Chain	Res	Type	Atoms	Z	Observed(Å)	Ideal(Å)
4	A	704	OXD	O3-C1	2.76	1.30	1.22
4	A	704	OXD	C2-C1	-2.61	1.47	1.54
4	C	704	OXD	C2-C1	-2.51	1.47	1.54
4	C	704	OXD	O3-C1	2.42	1.29	1.22
5	C	705	1WD	O10-C8	-2.38	1.23	1.30
5	A	705	1WD	O10-C8	-2.33	1.23	1.30
4	C	704	OXD	O4-C2	2.23	1.28	1.22
5	C	705	1WD	C3-C8	2.05	1.54	1.51

All (10) bond angle outliers are listed below:

Mol	Chain	Res	Type	Atoms	Z	Observed(°)	Ideal(°)
4	A	704	OXD	O6-C2-C1	3.39	123.24	113.16
5	A	705	1WD	C5-N4-C3	3.25	122.98	116.83
5	C	705	1WD	C5-N4-C3	2.80	122.12	116.83
5	A	705	1WD	O9-C8-C3	-2.48	115.63	120.73
4	A	704	OXD	O6-C2-O4	-2.46	117.98	123.61
5	C	705	1WD	C6-C5-N4	-2.43	119.46	123.43
5	A	705	1WD	C6-C5-N4	-2.13	119.94	123.43
5	A	705	1WD	O10-C8-C3	2.06	121.14	114.46
4	A	704	OXD	O5-C1-C2	2.06	119.28	113.16
4	C	704	OXD	O4-C2-C1	-2.05	114.19	120.78

There are no chirality outliers.

All (1) torsion outliers are listed below:

Mol	Chain	Res	Type	Atoms
4	C	704	OXD	O5-C1-C2-O6

There are no ring outliers.

2 monomers are involved in 2 short contacts:

Mol	Chain	Res	Type	Clashes	Symm-Clashes
5	C	705	1WD	1	0
5	A	705	1WD	1	0

## 5.7 Other polymers [i](#)

There are no such residues in this entry.

## 5.8 Polymer linkage issues [i](#)

There are no chain breaks in this entry.

## 6 Fit of model and data

### 6.1 Protein, DNA and RNA chains

In the following table, the column labelled ‘#RSRZ > 2’ contains the number (and percentage) of RSRZ outliers, followed by percent RSRZ outliers for the chain as percentile scores relative to all X-ray entries and entries of similar resolution. The OWAB column contains the minimum, median, 95<sup>th</sup> percentile and maximum values of the occupancy-weighted average B-factor per residue. The column labelled ‘Q < 0.9’ lists the number of (and percentage) of residues with an average occupancy less than 0.9.

Mol	Chain	Analysed	<RSRZ>	#RSRZ>2	OWAB(Å <sup>2</sup> )	Q<0.9
1	A	612/622 (98%)	0.35	43 (7%) 16 17	12, 22, 42, 93	1 (0%)
1	C	606/622 (97%)	0.17	27 (4%) 33 36	14, 21, 36, 95	0
All	All	1218/1244 (97%)	0.26	70 (5%) 23 25	12, 22, 39, 95	1 (0%)

All (70) RSRZ outliers are listed below:

Mol	Chain	Res	Type	RSRZ
1	A	466	ALA	8.2
1	C	393	PRO	7.4
1	C	465	THR	7.3
1	C	396	GLU	6.5
1	A	465	THR	5.9
1	A	393	PRO	5.7
1	A	392	ARG	5.4
1	A	522	ASN	5.3
1	C	504	PRO	5.2
1	C	392	ARG	5.0
1	A	9	LEU	4.9
1	C	9	LEU	4.9
1	C	464	ALA	4.8
1	A	7	ASN	4.7
1	A	8	GLY	4.6
1	A	504	PRO	4.5
1	C	391	TRP	4.4
1	A	391	TRP	4.3
1	C	397	GLU	4.2
1	A	377	LEU	4.1
1	A	521	LYS	4.1
1	A	517	PHE	3.9
1	C	522	ASN	3.9
1	A	464	ALA	3.9

*Continued on next page...*

*Continued from previous page...*

Mol	Chain	Res	Type	RSRZ
1	C	473	LYS	3.8
1	A	4	GLN	3.7
1	A	3	PRO	3.3
1	A	523	GLY	3.1
1	A	378	ALA	3.1
1	A	381	VAL	3.1
1	A	374	ASP	3.0
1	C	395	ASP	3.0
1	A	525	PHE	2.9
1	A	205	PRO	2.9
1	A	379[A]	PRO	2.9
1	A	570	GLY	2.9
1	C	205	PRO	2.9
1	A	325	ALA	2.8
1	C	517	PHE	2.7
1	C	521	LYS	2.7
1	C	520	ASP	2.7
1	C	142	ILE	2.6
1	A	398	PRO	2.6
1	A	142	ILE	2.6
1	C	561	GLU	2.5
1	A	376	PRO	2.5
1	A	380[A]	GLY	2.4
1	A	303	TRP	2.4
1	A	167	VAL	2.4
1	C	376	PRO	2.4
1	A	390	GLU	2.3
1	C	525	PHE	2.3
1	A	472	GLY	2.3
1	C	25	GLN	2.2
1	C	548	ASP	2.2
1	A	273	PRO	2.2
1	A	382	THR	2.2
1	C	474	VAL	2.2
1	A	456	VAL	2.2
1	A	561	GLU	2.2
1	A	287	ALA	2.1
1	A	301	PRO	2.1
1	A	514	VAL	2.1
1	A	562	ASP	2.1
1	A	166	VAL	2.1
1	C	378	ALA	2.1

*Continued on next page...*



*Continued from previous page...*

Mol	Chain	Res	Type	RSRZ
1	C	505	ALA	2.1
1	A	389	LYS	2.1
1	C	390	GLU	2.1
1	C	166	VAL	2.1

## 6.2 Non-standard residues in protein, DNA, RNA chains [i](#)

There are no non-standard protein/DNA/RNA residues in this entry.

## 6.3 Carbohydrates [i](#)

There are no monosaccharides in this entry.

## 6.4 Ligands [i](#)

In the following table, the Atoms column lists the number of modelled atoms in the group and the number defined in the chemical component dictionary. The B-factors column lists the minimum, median, 95<sup>th</sup> percentile and maximum values of B factors of atoms in the group. The column labelled 'Q< 0.9' lists the number of atoms with occupancy less than 0.9.

Mol	Type	Chain	Res	Atoms	RSCC	RSR	B-factors(Å <sup>2</sup> )	Q<0.9
5	1WD	A	705	10/10	0.81	0.18	23,26,29,34	10
5	1WD	C	705	10/10	0.91	0.13	21,23,28,28	10
4	OXD	C	704	6/6	0.94	0.08	15,19,25,25	0
4	OXD	A	704	6/6	0.96	0.08	17,19,24,25	0
3	NA	C	703	1/1	0.97	0.08	22,22,22,22	0
3	NA	A	703	1/1	0.98	0.07	24,24,24,24	0
6	CL	C	706	1/1	0.98	0.05	27,27,27,27	0
2	MN	C	702	1/1	0.99	0.04	21,21,21,21	1
6	CL	A	706	1/1	0.99	0.04	26,26,26,26	0
2	MN	A	702	1/1	0.99	0.09	17,17,17,17	1
2	MN	C	701	1/1	1.00	0.07	12,12,12,12	1
2	MN	A	701	1/1	1.00	0.06	13,13,13,13	0

## 6.5 Other polymers [i](#)

There are no such residues in this entry.