



Full wwPDB EM Validation Report ⓘ

Jul 25, 2024 – 02:20 PM JST

PDB ID : 8YWX
EMDB ID : EMD-39646
Title : the complex structure of the H4B6 Fab with the RBD of Omicron BA.5 S protein
Authors : Xia, L.Y.; Zhang, Y.Y.; Zhou, Q.
Deposited on : 2024-04-01
Resolution : 3.40 Å(reported)

This is a Full wwPDB EM Validation Report for a publicly released PDB entry.

We welcome your comments at validation@mail.wwpdb.org

A user guide is available at

<https://www.wwpdb.org/validation/2017/EMValidationReportHelp>

with specific help available everywhere you see the ⓘ symbol.

The types of validation reports are described at

<http://www.wwpdb.org/validation/2017/FAQs#types>.

The following versions of software and data (see [references ⓘ](#)) were used in the production of this report:

EMDB validation analysis : 0.0.1.dev92
MolProbity : 4.02b-467
Percentile statistics : 20191225.v01 (using entries in the PDB archive December 25th 2019)
MapQ : 1.9.13
Ideal geometry (proteins) : Engh & Huber (2001)
Ideal geometry (DNA, RNA) : Parkinson et al. (1996)
Validation Pipeline (wwPDB-VP) : 2.37.1

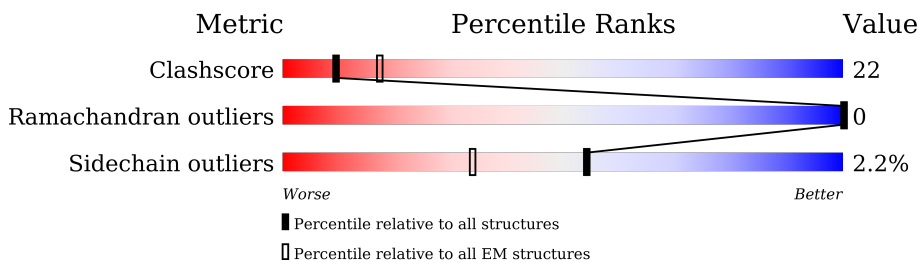
1 Overall quality at a glance

The following experimental techniques were used to determine the structure:

ELECTRON MICROSCOPY

The reported resolution of this entry is 3.40 Å.

Percentile scores (ranging between 0-100) for global validation metrics of the entry are shown in the following graphic. The table shows the number of entries on which the scores are based.



Metric	Whole archive (#Entries)	EM structures (#Entries)
Clashscore	158937	4297
Ramachandran outliers	154571	4023
Sidechain outliers	154315	3826

The table below summarises the geometric issues observed across the polymeric chains and their fit to the map. The red, orange, yellow and green segments of the bar indicate the fraction of residues that contain outliers for ≥ 3 , 2, 1 and 0 types of geometric quality criteria respectively. A grey segment represents the fraction of residues that are not modelled. The numeric value for each fraction is indicated below the corresponding segment, with a dot representing fractions $\leq 5\%$. The upper red bar (where present) indicates the fraction of residues that have poor fit to the EM map (all-atom inclusion $< 40\%$). The numeric value is given above the bar.

Mol	Chain	Length	Quality of chain
1	E	707	 20% 9% 69%
2	D	214	 14% 66% 28% 5%
3	A	1120	 10% 6% 83%

2 Entry composition [i](#)

There are 3 unique types of molecules in this entry. The entry contains 4803 atoms, of which 0 are hydrogens and 0 are deuteriums.

In the tables below, the AltConf column contains the number of residues with at least one atom in alternate conformation and the Trace column contains the number of residues modelled with at most 2 atoms.

- Molecule 1 is a protein called H4B6 Fab's heavy chain.

Mol	Chain	Residues	Atoms					AltConf	Trace
			Total	C	N	O	S		
1	E	218	1618	1015	278	319	6	0	0

- Molecule 2 is a protein called H4B6 Fab's light chain.

Mol	Chain	Residues	Atoms					AltConf	Trace
			Total	C	N	O	S		
2	D	212	1645	1028	278	334	5	0	0

- Molecule 3 is a protein called Spike protein S2'.

Mol	Chain	Residues	Atoms					AltConf	Trace
			Total	C	N	O	S		
3	A	193	1540	992	261	279	8	0	0

There are 31 discrepancies between the modelled and reference sequences:

Chain	Residue	Modelled	Actual	Comment	Reference
A	156	ASP	GLU	conflict	UNP P0DTC2
A	339	ASP	GLY	variant	UNP P0DTC2
A	371	PHE	SER	variant	UNP P0DTC2
A	373	PRO	SER	variant	UNP P0DTC2
A	375	PHE	SER	variant	UNP P0DTC2
A	376	ALA	THR	variant	UNP P0DTC2
A	405	ASN	ASP	variant	UNP P0DTC2
A	408	SER	ARG	variant	UNP P0DTC2
A	417	ASN	LYS	variant	UNP P0DTC2
A	440	LYS	ASN	variant	UNP P0DTC2
A	452	ARG	LEU	variant	UNP P0DTC2
A	477	ASN	SER	variant	UNP P0DTC2
A	478	LYS	THR	variant	UNP P0DTC2
A	484	ALA	GLU	variant	UNP P0DTC2
A	486	VAL	PHE	variant	UNP P0DTC2

Continued on next page...

Continued from previous page...

Chain	Residue	Modelled	Actual	Comment	Reference
A	498	ARG	GLN	variant	UNP P0DTC2
A	501	TYR	ASN	variant	UNP P0DTC2
A	505	HIS	TYR	variant	UNP P0DTC2
A	614	GLY	ASP	variant	UNP P0DTC2
A	655	TYR	HIS	variant	UNP P0DTC2
A	658	SER	ASN	conflict	UNP P0DTC2
A	764	LYS	ASN	variant	UNP P0DTC2
A	796	TYR	ASP	variant	UNP P0DTC2
A	817	PRO	PHE	conflict	UNP P0DTC2
A	892	PRO	ALA	conflict	UNP P0DTC2
A	899	PRO	ALA	conflict	UNP P0DTC2
A	942	PRO	ALA	conflict	UNP P0DTC2
A	954	HIS	GLN	variant	UNP P0DTC2
A	969	LYS	ASN	variant	UNP P0DTC2
A	986	PRO	LYS	variant	UNP P0DTC2
A	987	PRO	VAL	variant	UNP P0DTC2

4 Experimental information

Property	Value	Source
EM reconstruction method	SINGLE PARTICLE	Depositor
Imposed symmetry	POINT, Not provided	
Number of particles used	368678	Depositor
Resolution determination method	FSC 0.143 CUT-OFF	Depositor
CTF correction method	PHASE FLIPPING AND AMPLITUDE CORRECTION	Depositor
Microscope	FEI TITAN KRIOS	Depositor
Voltage (kV)	300	Depositor
Electron dose ($e^-/\text{\AA}^2$)	50	Depositor
Minimum defocus (nm)	1200	Depositor
Maximum defocus (nm)	2200	Depositor
Magnification	Not provided	
Image detector	GATAN K3 (6k x 4k)	Depositor
Maximum map value	6.832	Depositor
Minimum map value	-5.316	Depositor
Average map value	-0.001	Depositor
Map value standard deviation	0.041	Depositor
Recommended contour level	0.4	Depositor
Map size (\AA)	434.80002, 434.80002, 434.80002	wwPDB
Map dimensions	400, 400, 400	wwPDB
Map angles ($^\circ$)	90.0, 90.0, 90.0	wwPDB
Pixel spacing (\AA)	1.087, 1.087, 1.087	Depositor

5 Model quality i

5.1 Standard geometry i

The Z score for a bond length (or angle) is the number of standard deviations the observed value is removed from the expected value. A bond length (or angle) with $|Z| > 5$ is considered an outlier worth inspection. RMSZ is the root-mean-square of all Z scores of the bond lengths (or angles).

Mol	Chain	Bond lengths		Bond angles	
		RMSZ	# Z >5	RMSZ	# Z >5
1	E	0.48	2/1655 (0.1%)	1.43	33/2251 (1.5%)
2	D	0.32	0/1679	0.98	24/2280 (1.1%)
3	A	0.61	2/1586 (0.1%)	1.26	27/2158 (1.3%)
All	All	0.48	4/4920 (0.1%)	1.23	84/6689 (1.3%)

Chiral center outliers are detected by calculating the chiral volume of a chiral center and verifying if the center is modelled as a planar moiety or with the opposite hand. A planarity outlier is detected by checking planarity of atoms in a peptide group, atoms in a mainchain group or atoms of a sidechain that are expected to be planar.

Mol	Chain	#Chirality outliers	#Planarity outliers
1	E	0	3

All (4) bond length outliers are listed below:

Mol	Chain	Res	Type	Atoms	Z	Observed(Å)	Ideal(Å)
1	E	103	GLY	C-N	-11.18	1.12	1.33
1	E	2	VAL	C-N	-5.95	1.20	1.34
3	A	349	SER	CA-CB	-5.75	1.44	1.52
3	A	438	SER	CA-CB	-5.25	1.45	1.52

All (84) bond angle outliers are listed below:

Mol	Chain	Res	Type	Atoms	Z	Observed(°)	Ideal(°)
1	E	24	ALA	CB-CA-C	-21.66	77.60	110.10
1	E	11	LEU	CB-CA-C	-15.74	80.28	110.20
1	E	23	ALA	CB-CA-C	-15.60	86.69	110.10
1	E	25	SER	N-CA-CB	-14.63	88.55	110.50
1	E	11	LEU	N-CA-CB	-13.82	82.76	110.40
3	A	344	ALA	N-CA-CB	13.41	128.87	110.10
1	E	11	LEU	N-CA-C	12.42	144.54	111.00
1	E	5	VAL	N-CA-C	-11.71	79.39	111.00
1	E	10	ASP	N-CA-C	-11.46	80.07	111.00

Continued on next page...

Continued from previous page...

Mol	Chain	Res	Type	Atoms	Z	Observed(°)	Ideal(°)
3	A	501	TYR	N-CA-CB	11.15	130.67	110.60
1	E	103	GLY	O-C-N	-10.51	105.34	123.20
3	A	343	ASN	CB-CA-C	10.45	131.30	110.40
2	D	127	SER	CB-CA-C	-10.37	90.39	110.10
1	E	103	GLY	N-CA-C	9.87	137.78	113.10
1	E	106	SER	N-CA-C	-9.77	84.64	111.00
2	D	182	SER	CB-CA-C	-9.67	91.73	110.10
1	E	2	VAL	N-CA-C	-9.35	85.75	111.00
1	E	128	LEU	N-CA-C	-9.29	85.91	111.00
1	E	103	GLY	CA-C-N	9.06	134.33	116.20
3	A	470	THR	N-CA-C	-9.05	86.56	111.00
1	E	114	THR	N-CA-C	-9.04	86.60	111.00
2	D	11	LEU	N-CA-CB	9.01	128.42	110.40
3	A	343	ASN	N-CA-C	-8.98	86.75	111.00
1	E	7	SER	N-CA-CB	8.97	123.96	110.50
3	A	344	ALA	N-CA-C	-8.89	86.99	111.00
2	D	10	SER	N-CA-C	-8.69	87.53	111.00
3	A	422	ASN	N-CA-C	8.49	133.93	111.00
1	E	47	TRP	CB-CA-C	-8.21	93.98	110.40
2	D	190	LYS	CB-CA-C	-8.13	94.13	110.40
3	A	501	TYR	N-CA-C	-7.99	89.43	111.00
1	E	6	GLU	N-CA-C	-7.88	89.72	111.00
3	A	411	ALA	CB-CA-C	7.87	121.90	110.10
2	D	11	LEU	N-CA-C	-7.77	90.03	111.00
3	A	448	ASN	N-CA-C	-7.68	90.25	111.00
1	E	25	SER	N-CA-C	7.63	131.60	111.00
1	E	2	VAL	O-C-N	-7.49	110.72	122.70
3	A	373	PRO	N-CA-C	-7.13	93.56	112.10
2	D	52	SER	N-CA-CB	-7.12	99.82	110.50
1	E	106	SER	CB-CA-C	7.04	123.48	110.10
3	A	448	ASN	N-CA-CB	7.00	123.19	110.60
3	A	506	GLN	N-CA-CB	6.98	123.17	110.60
1	E	115	VAL	N-CA-C	-6.97	92.17	111.00
1	E	27	PHE	N-CA-CB	-6.79	98.38	110.60
2	D	59	PRO	N-CA-C	-6.67	94.75	112.10
2	D	190	LYS	N-CA-C	6.66	128.97	111.00
3	A	470	THR	CB-CA-C	6.64	129.53	111.60
2	D	51	ALA	CB-CA-C	6.53	119.89	110.10
3	A	422	ASN	N-CA-CB	-6.51	98.89	110.60
2	D	189	HIS	CB-CA-C	-6.43	97.55	110.40
3	A	339	ASP	N-CA-C	6.33	128.10	111.00
1	E	3	GLN	N-CA-C	-6.32	93.93	111.00

Continued on next page...

Continued from previous page...

Mol	Chain	Res	Type	Atoms	Z	Observed(°)	Ideal(°)
3	A	375	PHE	N-CA-C	-6.06	94.64	111.00
3	A	388	ASN	CB-CA-C	6.05	122.50	110.40
1	E	3	GLN	N-CA-CB	6.03	121.45	110.60
3	A	353	TRP	N-CA-C	-6.00	94.80	111.00
3	A	430	THR	N-CA-C	-5.94	94.97	111.00
1	E	195	THR	CB-CA-C	-5.91	95.64	111.60
1	E	21	SER	CB-CA-C	5.89	121.29	110.10
1	E	24	ALA	N-CA-C	5.88	126.89	111.00
2	D	59	PRO	CB-CA-C	5.87	126.67	112.00
2	D	92	ASP	CB-CA-C	-5.84	98.72	110.40
2	D	60	SER	N-CA-CB	5.83	119.25	110.50
3	A	400	PHE	CB-CA-C	-5.80	98.79	110.40
1	E	31	ARG	N-CA-C	5.80	126.66	111.00
1	E	128	LEU	CB-CA-C	5.75	121.12	110.20
3	A	505	HIS	N-CA-C	-5.73	95.54	111.00
1	E	68	THR	CB-CA-C	5.68	126.93	111.60
2	D	69	THR	N-CA-C	5.55	125.98	111.00
2	D	9	ALA	N-CA-CB	-5.54	102.35	110.10
2	D	58	VAL	CB-CA-C	5.53	121.91	111.40
2	D	68	GLY	N-CA-C	-5.51	99.33	113.10
3	A	375	PHE	CB-CA-C	5.47	121.35	110.40
3	A	339	ASP	N-CA-CB	-5.41	100.86	110.60
2	D	77	SER	N-CA-CB	5.39	118.59	110.50
2	D	76	SER	CB-CA-C	-5.32	99.99	110.10
3	A	353	TRP	N-CA-CB	5.32	120.17	110.60
3	A	447	GLY	N-CA-C	-5.18	100.14	113.10
1	E	47	TRP	N-CA-C	5.16	124.94	111.00
3	A	500	THR	N-CA-C	-5.11	97.21	111.00
2	D	7	SER	CB-CA-C	-5.11	100.40	110.10
2	D	100	GLN	N-CA-CB	-5.10	101.42	110.60
2	D	8	PRO	CB-CA-C	-5.08	99.29	112.00
1	E	69	ILE	N-CA-C	-5.08	97.29	111.00
2	D	47	LEU	N-CA-C	5.05	124.64	111.00

There are no chirality outliers.

All (3) planarity outliers are listed below:

Mol	Chain	Res	Type	Group
1	E	103	GLY	Mainchain
1	E	2	VAL	Mainchain
1	E	5	VAL	Mainchain

5.2 Too-close contacts [i](#)

In the following table, the Non-H and H(model) columns list the number of non-hydrogen atoms and hydrogen atoms in the chain respectively. The H(added) column lists the number of hydrogen atoms added and optimized by MolProbity. The Clashes column lists the number of clashes within the asymmetric unit, whereas Symm-Clashes lists symmetry-related clashes.

Mol	Chain	Non-H	H(model)	H(added)	Clashes	Symm-Clashes
1	E	1618	0	1592	69	0
2	D	1645	0	1596	48	0
3	A	1540	0	1463	112	0
All	All	4803	0	4651	212	0

The all-atom clashscore is defined as the number of clashes found per 1000 atoms (including hydrogen atoms). The all-atom clashscore for this structure is 22.

All (212) close contacts within the same asymmetric unit are listed below, sorted by their clash magnitude.

Atom-1	Atom-2	Interatomic distance (Å)	Clash overlap (Å)
3:A:382:VAL:HG11	3:A:387:LEU:CD2	1.41	1.45
3:A:382:VAL:CG1	3:A:387:LEU:HD21	1.49	1.42
3:A:372:ALA:HB3	3:A:374:PHE:CE1	1.62	1.33
3:A:374:PHE:CD2	3:A:377:PHE:HD2	1.46	1.31
3:A:382:VAL:CG1	3:A:387:LEU:CD2	2.07	1.29
1:E:4:LEU:HD22	1:E:23:ALA:O	1.32	1.27
3:A:382:VAL:HG11	3:A:387:LEU:CG	1.66	1.25
3:A:382:VAL:CG1	3:A:387:LEU:CG	2.17	1.22
1:E:97:ARG:NH2	1:E:99:ILE:HD11	1.53	1.21
3:A:372:ALA:CB	3:A:374:PHE:CE1	2.25	1.18
3:A:374:PHE:CE2	3:A:377:PHE:HD2	1.61	1.17
1:E:11:LEU:O	1:E:11:LEU:HG	1.48	1.13
3:A:374:PHE:CE2	3:A:377:PHE:CD2	2.36	1.13
3:A:382:VAL:HG12	3:A:387:LEU:HG	1.32	1.11
3:A:374:PHE:CD2	3:A:377:PHE:CD2	2.39	1.10
1:E:7:SER:HA	1:E:111:THR:HG21	1.29	1.09
1:E:2:VAL:HA	1:E:25:SER:OG	1.52	1.09
2:D:142:ARG:HG3	2:D:173:TYR:CE2	1.87	1.09
1:E:7:SER:HA	1:E:111:THR:CG2	1.87	1.03
3:A:374:PHE:CD1	3:A:434:ILE:HG23	1.93	1.03
1:E:6:GLU:O	1:E:111:THR:HG23	1.59	1.02
1:E:100:PRO:HD2	3:A:456:PHE:HZ	1.21	1.02
1:E:4:LEU:CD2	1:E:23:ALA:O	2.12	0.98
1:E:6:GLU:O	1:E:6:GLU:HG2	1.65	0.96

Continued on next page...

Continued from previous page...

Atom-1	Atom-2	Interatomic distance (Å)	Clash overlap (Å)
3:A:382:VAL:HG11	3:A:387:LEU:CD1	1.95	0.96
3:A:365:TYR:OH	3:A:395:VAL:HG21	1.65	0.95
3:A:372:ALA:CB	3:A:374:PHE:CD1	2.49	0.95
3:A:372:ALA:CB	3:A:374:PHE:HE1	1.72	0.95
3:A:374:PHE:HE2	3:A:377:PHE:CD2	1.85	0.95
3:A:372:ALA:HB1	3:A:374:PHE:CD1	2.03	0.94
1:E:33:TYR:CE1	3:A:456:PHE:CE1	2.56	0.94
3:A:382:VAL:CG1	3:A:387:LEU:HG	1.89	0.93
1:E:97:ARG:HH22	1:E:99:ILE:HD11	1.13	0.93
3:A:374:PHE:HE2	3:A:377:PHE:CE2	1.88	0.92
3:A:382:VAL:HG13	3:A:387:LEU:HD21	1.51	0.92
3:A:374:PHE:HD2	3:A:377:PHE:HD2	1.16	0.92
3:A:382:VAL:HG11	3:A:387:LEU:HD21	0.92	0.89
1:E:104:GLY:O	1:E:105:ASP:OD1	1.90	0.89
2:D:8:PRO:O	2:D:102:THR:HG23	1.73	0.88
2:D:190:LYS:O	2:D:190:LYS:HG3	1.72	0.88
1:E:128:LEU:HB2	1:E:143:GLY:O	1.73	0.87
1:E:100:PRO:HD2	3:A:456:PHE:CZ	2.09	0.87
3:A:374:PHE:CZ	3:A:434:ILE:HD13	2.09	0.87
1:E:52:TYR:O	1:E:71:ARG:NH1	2.07	0.86
3:A:349:SER:O	3:A:352:ALA:O	1.95	0.84
3:A:374:PHE:CE1	3:A:434:ILE:CG2	2.61	0.83
3:A:374:PHE:CD1	3:A:434:ILE:CG2	2.61	0.83
2:D:128:GLY:HA2	2:D:183:LYS:HB3	1.58	0.82
3:A:372:ALA:HB3	3:A:374:PHE:HE1	1.29	0.82
3:A:342:PHE:HB3	3:A:371:PHE:HZ	1.45	0.81
2:D:31:LYS:O	2:D:50:ASP:O	1.98	0.81
1:E:6:GLU:O	1:E:111:THR:CG2	2.29	0.81
1:E:33:TYR:HE1	3:A:456:PHE:CD1	1.98	0.81
1:E:97:ARG:NH2	1:E:99:ILE:CD1	2.40	0.81
1:E:7:SER:CA	1:E:111:THR:HG21	2.11	0.80
3:A:372:ALA:HB3	3:A:374:PHE:CD1	2.13	0.80
3:A:374:PHE:CE1	3:A:434:ILE:HG21	2.17	0.80
3:A:372:ALA:HB1	3:A:374:PHE:HD1	1.45	0.79
1:E:6:GLU:O	1:E:6:GLU:CG	2.28	0.79
3:A:422:ASN:HD21	3:A:454:ARG:H	1.30	0.79
1:E:11:LEU:O	1:E:11:LEU:CG	2.06	0.79
3:A:382:VAL:HG11	3:A:387:LEU:HD11	1.64	0.78
1:E:2:VAL:HA	1:E:25:SER:HG	1.46	0.78
3:A:374:PHE:HD2	3:A:377:PHE:CD2	1.92	0.78
3:A:374:PHE:CG	3:A:434:ILE:HG23	2.17	0.78

Continued on next page...

Continued from previous page...

Atom-1	Atom-2	Interatomic distance (Å)	Clash overlap (Å)
3:A:357:ARG:HD2	3:A:394:ASN:ND2	2.01	0.76
3:A:444:LYS:HE2	3:A:448:ASN:HA	1.66	0.76
3:A:382:VAL:HG13	3:A:387:LEU:CD2	2.12	0.76
1:E:100:PRO:HG2	3:A:456:PHE:HE1	1.50	0.75
3:A:382:VAL:CG1	3:A:387:LEU:CD1	2.60	0.75
3:A:382:VAL:CG1	3:A:387:LEU:HD11	2.16	0.74
2:D:8:PRO:O	2:D:102:THR:CG2	2.35	0.74
3:A:350:VAL:CG1	3:A:422:ASN:HB3	2.19	0.73
1:E:32:ASN:HD22	1:E:97:ARG:HE	1.33	0.73
1:E:33:TYR:HE1	3:A:456:PHE:CE1	2.05	0.72
1:E:22:CYS:O	1:E:77:THR:HA	1.90	0.71
2:D:142:ARG:HG3	2:D:173:TYR:CZ	2.24	0.71
3:A:342:PHE:HB3	3:A:371:PHE:CZ	2.26	0.70
3:A:402:ILE:HD13	3:A:410:ILE:HG13	1.73	0.70
2:D:142:ARG:CG	2:D:173:TYR:CE2	2.70	0.70
2:D:126:LYS:O	2:D:126:LYS:HG3	1.91	0.70
3:A:447:GLY:HA2	3:A:497:PHE:O	1.91	0.69
1:E:97:ARG:HH22	1:E:99:ILE:CD1	2.00	0.67
3:A:348:ALA:HB2	3:A:354:ASN:HB2	1.74	0.67
2:D:190:LYS:O	2:D:190:LYS:CG	2.43	0.67
2:D:42:LYS:NZ	2:D:43:ALA:O	2.28	0.67
3:A:425:LEU:HD21	3:A:512:VAL:HG11	1.77	0.66
1:E:31:ARG:HH22	3:A:474:GLN:HB2	1.60	0.66
1:E:99:ILE:HD13	3:A:489:TYR:OH	1.95	0.66
1:E:100:PRO:HG2	3:A:456:PHE:CE1	2.31	0.64
3:A:374:PHE:CE1	3:A:434:ILE:HG23	2.30	0.64
1:E:33:TYR:CE1	3:A:456:PHE:CD1	2.82	0.64
3:A:347:PHE:HD1	3:A:399:SER:HB3	1.63	0.63
3:A:336:CYS:SG	3:A:363:ALA:HB2	2.38	0.63
1:E:92:ILE:HG13	1:E:112:LEU:HD13	1.81	0.62
2:D:6:GLN:NE2	2:D:88:CYS:SG	2.65	0.62
3:A:444:LYS:HB2	3:A:447:GLY:O	1.99	0.61
2:D:68:GLY:O	2:D:71:PHE:CE1	2.54	0.61
2:D:161:GLU:HB2	2:D:175:LEU:HD11	1.82	0.60
3:A:350:VAL:HG12	3:A:422:ASN:HB3	1.84	0.60
3:A:374:PHE:CE2	3:A:377:PHE:CE2	2.74	0.59
2:D:190:LYS:HE2	2:D:211:ARG:HB2	1.83	0.59
2:D:198:HIS:HD1	2:D:200:GLY:H	1.49	0.59
2:D:108:ARG:O	2:D:140:TYR:HE2	1.86	0.59
2:D:146:VAL:O	2:D:147:GLN:NE2	2.35	0.59
3:A:347:PHE:CD1	3:A:399:SER:HB3	2.38	0.58

Continued on next page...

Continued from previous page...

Atom-1	Atom-2	Interatomic distance (Å)	Clash overlap (Å)
3:A:374:PHE:CE2	3:A:434:ILE:HD13	2.38	0.58
1:E:100:PRO:CD	3:A:456:PHE:CZ	2.85	0.57
2:D:58:VAL:HG12	2:D:59:PRO:O	2.04	0.57
1:E:106:SER:O	1:E:107:TRP:HD1	1.87	0.57
2:D:27:GLN:O	2:D:69:THR:HG22	2.05	0.57
1:E:175:GLN:NE2	1:E:179:LEU:O	2.38	0.56
2:D:83:ILE:HD12	2:D:105:GLU:HA	1.86	0.56
3:A:444:LYS:HB2	3:A:447:GLY:C	2.25	0.56
3:A:438:SER:OG	3:A:507:PRO:HB2	2.05	0.56
2:D:61:ARG:HH12	2:D:79:GLN:HG2	1.70	0.56
2:D:108:ARG:O	2:D:140:TYR:CE2	2.58	0.56
3:A:435:ALA:HA	3:A:509:ARG:O	2.06	0.56
3:A:365:TYR:HH	3:A:395:VAL:HG21	1.72	0.55
3:A:350:VAL:HG11	3:A:422:ASN:HB3	1.87	0.55
1:E:22:CYS:SG	1:E:23:ALA:N	2.80	0.55
3:A:505:HIS:O	3:A:506:GLN:HG3	2.08	0.54
3:A:500:THR:O	3:A:500:THR:OG1	2.17	0.53
3:A:350:VAL:HG21	3:A:402:ILE:HG22	1.90	0.53
3:A:470:THR:HG23	3:A:490:PHE:HE1	1.73	0.53
1:E:37:VAL:HG11	1:E:107:TRP:CH2	2.43	0.53
2:D:108:ARG:NE	2:D:109:THR:O	2.42	0.53
3:A:353:TRP:CE2	3:A:466:ARG:HG2	2.44	0.52
3:A:462:LYS:HG2	3:A:465:GLU:HB2	1.91	0.52
3:A:374:PHE:HE2	3:A:377:PHE:HE2	1.52	0.52
3:A:441:LEU:HD12	3:A:441:LEU:H	1.75	0.52
3:A:422:ASN:HD21	3:A:454:ARG:N	2.05	0.51
1:E:32:ASN:HD21	3:A:475:ALA:HB2	1.75	0.51
3:A:355:ARG:HG3	3:A:356:LYS:N	2.25	0.51
1:E:32:ASN:HD21	3:A:475:ALA:CB	2.24	0.50
2:D:18:ARG:HH12	2:D:74:THR:HB	1.75	0.50
2:D:158:ASN:OD1	2:D:158:ASN:O	2.30	0.50
3:A:382:VAL:HG12	3:A:387:LEU:CG	1.98	0.50
1:E:77:THR:HB	1:E:79:TYR:CE1	2.47	0.50
3:A:475:ALA:H	3:A:487:ASN:HB3	1.77	0.50
2:D:33:LEU:HD11	2:D:88:CYS:HB2	1.94	0.50
3:A:476:GLY:H	3:A:487:ASN:HB3	1.77	0.49
2:D:15:ILE:HD11	2:D:80:PRO:HD3	1.93	0.49
1:E:214:LYS:NZ	1:E:216:GLU:HB2	2.28	0.49
3:A:445:VAL:HA	3:A:499:PRO:HD2	1.94	0.49
1:E:33:TYR:CE1	3:A:456:PHE:HE1	2.19	0.48
1:E:82:MET:HB3	1:E:85:LEU:HD21	1.96	0.48

Continued on next page...

Continued from previous page...

Atom-1	Atom-2	Interatomic distance (Å)	Clash overlap (Å)
3:A:351:TYR:CE1	3:A:452:ARG:HB2	2.49	0.48
3:A:422:ASN:ND2	3:A:454:ARG:H	2.06	0.48
1:E:127:PRO:HA	1:E:213:LYS:NZ	2.29	0.47
2:D:7:SER:HB2	2:D:8:PRO:HD3	1.95	0.47
3:A:402:ILE:CD1	3:A:410:ILE:HG13	2.43	0.47
3:A:474:GLN:HA	3:A:487:ASN:O	2.13	0.47
1:E:2:VAL:CA	1:E:25:SER:OG	2.43	0.47
1:E:39:GLN:HB2	1:E:45:LEU:HG	1.97	0.47
2:D:140:TYR:HD1	2:D:141:PRO:HA	1.79	0.47
1:E:185:VAL:HG21	2:D:135:LEU:HD11	1.98	0.46
1:E:33:TYR:HB2	1:E:98:ASP:O	2.16	0.46
2:D:142:ARG:CG	2:D:173:TYR:CZ	2.97	0.46
1:E:63:VAL:HB	1:E:67:PHE:HB2	1.97	0.46
2:D:126:LYS:O	2:D:126:LYS:CG	2.63	0.46
3:A:479:PRO:O	3:A:480:CYS:HB3	2.16	0.46
2:D:42:LYS:NZ	2:D:45:ARG:HG3	2.31	0.46
1:E:106:SER:O	1:E:107:TRP:CD1	2.68	0.46
3:A:338:PHE:HE1	3:A:358:ILE:HG13	1.81	0.46
3:A:480:CYS:O	3:A:480:CYS:SG	2.74	0.45
2:D:42:LYS:HZ1	2:D:45:ARG:HG3	1.81	0.45
1:E:12:VAL:HG22	1:E:13:GLN:H	1.80	0.45
2:D:136:LEU:HB3	2:D:175:LEU:HB3	1.97	0.45
1:E:213:LYS:HZ2	1:E:215:VAL:HG22	1.82	0.45
3:A:444:LYS:CE	3:A:447:GLY:O	2.65	0.45
1:E:204:HIS:ND1	1:E:207:SER:OG	2.32	0.45
1:E:90:THR:HG23	1:E:114:THR:HA	1.98	0.45
1:E:37:VAL:HG21	1:E:107:TRP:CZ3	2.52	0.44
2:D:46:LEU:O	2:D:46:LEU:HG	2.15	0.44
1:E:64:LYS:HA	1:E:64:LYS:HE2	1.99	0.44
1:E:193:LEU:HB3	1:E:217:PRO:HG2	1.99	0.44
3:A:470:THR:HG23	3:A:490:PHE:CE1	2.51	0.44
1:E:29:VAL:HG22	1:E:76:ASN:HA	1.99	0.44
1:E:86:ARG:HG2	1:E:87:ALA:H	1.83	0.43
3:A:356:LYS:HE3	3:A:356:LYS:HB3	1.82	0.43
1:E:31:ARG:HH12	3:A:475:ALA:CA	2.32	0.43
2:D:107:LYS:HG3	2:D:140:TYR:OH	2.19	0.43
2:D:138:ASN:HA	2:D:172:THR:HB	2.01	0.43
1:E:99:ILE:CD1	3:A:489:TYR:OH	2.65	0.43
2:D:33:LEU:HA	2:D:89:GLN:O	2.19	0.43
3:A:368:LEU:O	3:A:369:TYR:HB2	2.18	0.43
3:A:445:VAL:HA	3:A:499:PRO:CD	2.49	0.43

Continued on next page...

Continued from previous page...

Atom-1	Atom-2	Interatomic distance (Å)	Clash overlap (Å)
2:D:138:ASN:N	2:D:173:TYR:O	2.49	0.42
3:A:461:LEU:HD23	3:A:461:LEU:HA	1.88	0.42
3:A:374:PHE:HD2	3:A:377:PHE:HB2	1.84	0.42
3:A:382:VAL:CB	3:A:387:LEU:HD11	2.49	0.42
1:E:12:VAL:HG12	1:E:115:VAL:HG12	2.01	0.42
1:E:128:LEU:HD11	1:E:145:LEU:HB2	2.00	0.42
2:D:113:PRO:HB3	2:D:139:PHE:HB3	2.02	0.42
2:D:61:ARG:HB3	2:D:76:SER:HB3	2.01	0.42
3:A:374:PHE:CZ	3:A:434:ILE:HG21	2.54	0.41
1:E:29:VAL:CG2	1:E:76:ASN:HA	2.50	0.41
1:E:45:LEU:CD2	1:E:107:TRP:HZ3	2.33	0.41
2:D:30:ASN:O	2:D:71:PHE:HZ	2.03	0.41
2:D:63:SER:OG	2:D:74:THR:OG1	2.29	0.41
2:D:83:ILE:HG22	2:D:103:ARG:HH12	1.86	0.41
1:E:209:THR:HG22	1:E:211:VAL:HG23	2.01	0.41
3:A:386:LYS:O	3:A:389:ASP:HB2	2.21	0.41
2:D:135:LEU:HD21	2:D:137:ASN:ND2	2.35	0.40
3:A:399:SER:HA	3:A:510:VAL:O	2.21	0.40
1:E:155:THR:OG1	1:E:203:ASN:ND2	2.51	0.40
2:D:42:LYS:HG2	2:D:43:ALA:N	2.35	0.40
3:A:444:LYS:HE2	3:A:447:GLY:O	2.21	0.40
1:E:114:THR:HG23	1:E:114:THR:O	2.22	0.40
3:A:338:PHE:CE1	3:A:358:ILE:HG13	2.56	0.40
3:A:382:VAL:HG21	3:A:515:PHE:CD2	2.56	0.40

There are no symmetry-related clashes.

5.3 Torsion angles [i](#)

5.3.1 Protein backbone [i](#)

In the following table, the Percentiles column shows the percent Ramachandran outliers of the chain as a percentile score with respect to all PDB entries followed by that with respect to all EM entries.

The Analysed column shows the number of residues for which the backbone conformation was analysed, and the total number of residues.

Mol	Chain	Analysed	Favoured	Allowed	Outliers	Percentiles
1	E	216/707 (31%)	209 (97%)	7 (3%)	0	100 100

Continued on next page...

Continued from previous page...

Mol	Chain	Analysed	Favoured	Allowed	Outliers	Percentiles	
2	D	210/214 (98%)	201 (96%)	9 (4%)	0	100	100
3	A	191/1120 (17%)	186 (97%)	5 (3%)	0	100	100
All	All	617/2041 (30%)	596 (97%)	21 (3%)	0	100	100

There are no Ramachandran outliers to report.

5.3.2 Protein sidechains [i](#)

In the following table, the Percentiles column shows the percent sidechain outliers of the chain as a percentile score with respect to all PDB entries followed by that with respect to all EM entries.

The Analysed column shows the number of residues for which the sidechain conformation was analysed, and the total number of residues.

Mol	Chain	Analysed	Rotameric	Outliers	Percentiles	
1	E	182/590 (31%)	181 (100%)	1 (0%)	88	94
2	D	187/188 (100%)	185 (99%)	2 (1%)	73	86
3	A	165/972 (17%)	156 (94%)	9 (6%)	21	51
All	All	534/1750 (30%)	522 (98%)	12 (2%)	54	75

All (12) residues with a non-rotameric sidechain are listed below:

Mol	Chain	Res	Type
1	E	218	LYS
2	D	33	LEU
2	D	61	ARG
3	A	355	ARG
3	A	368	LEU
3	A	375	PHE
3	A	379	CYS
3	A	398	ASP
3	A	433	VAL
3	A	453	TYR
3	A	472	ILE
3	A	488	CYS

Sometimes sidechains can be flipped to improve hydrogen bonding and reduce clashes. All (5) such sidechains are listed below:

Mol	Chain	Res	Type
1	E	32	ASN
1	E	76	ASN
2	D	27	GLN
3	A	360	ASN
3	A	422	ASN

5.3.3 RNA [i](#)

There are no RNA molecules in this entry.

5.4 Non-standard residues in protein, DNA, RNA chains [i](#)

There are no non-standard protein/DNA/RNA residues in this entry.

5.5 Carbohydrates [i](#)

There are no monosaccharides in this entry.

5.6 Ligand geometry [i](#)

There are no ligands in this entry.

5.7 Other polymers [i](#)

There are no such residues in this entry.

5.8 Polymer linkage issues [i](#)

The following chains have linkage breaks:

Mol	Chain	Number of breaks
1	E	2

All chain breaks are listed below:

Model	Chain	Residue-1	Atom-1	Residue-2	Atom-2	Distance (Å)
1	E	2:VAL	C	3:GLN	N	1.20
1	E	103:GLY	C	104:GLY	N	1.12

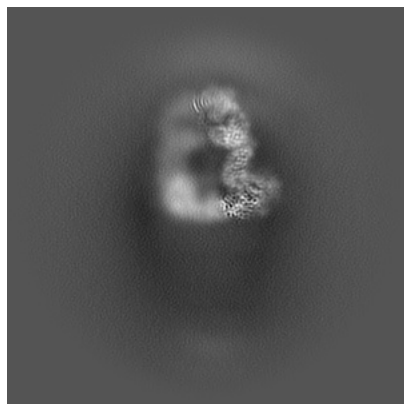
6 Map visualisation [i](#)

This section contains visualisations of the EMDB entry EMD-39646. These allow visual inspection of the internal detail of the map and identification of artifacts.

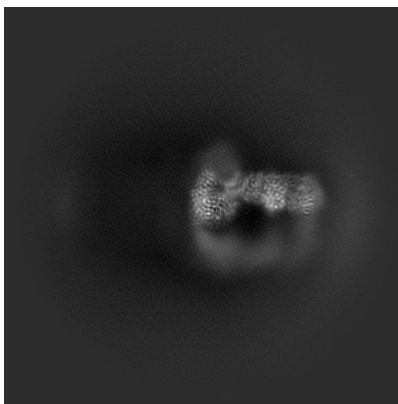
Images derived from a raw map, generated by summing the deposited half-maps, are presented below the corresponding image components of the primary map to allow further visual inspection and comparison with those of the primary map.

6.1 Orthogonal projections [i](#)

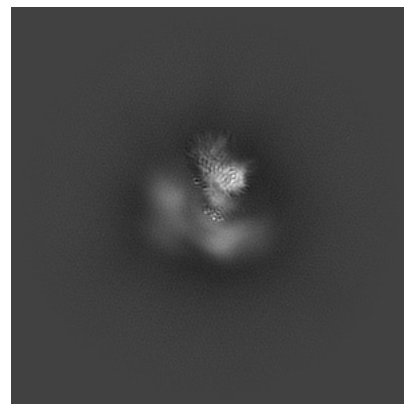
6.1.1 Primary map



X

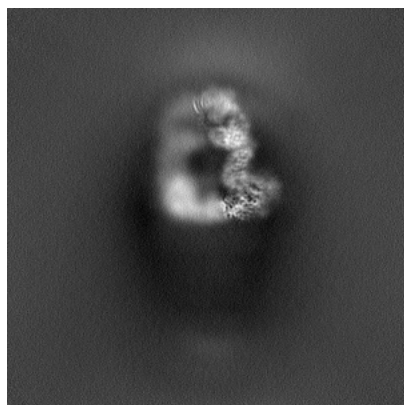


Y

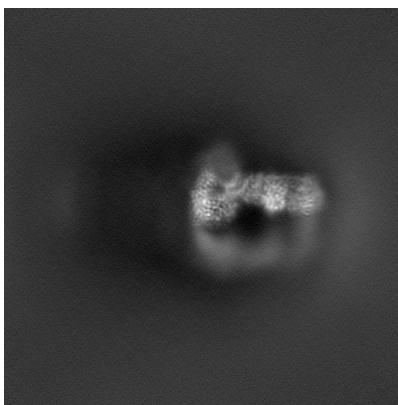


Z

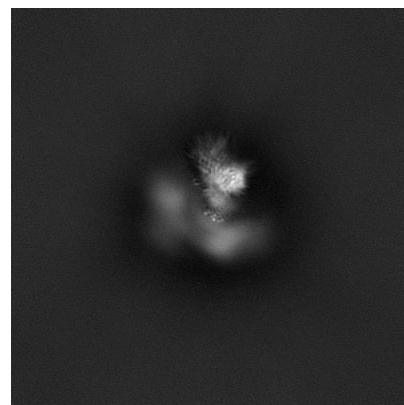
6.1.2 Raw map



X



Y

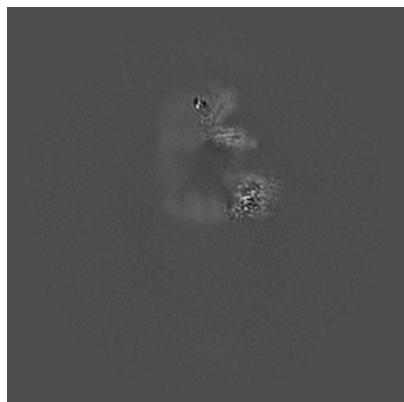


Z

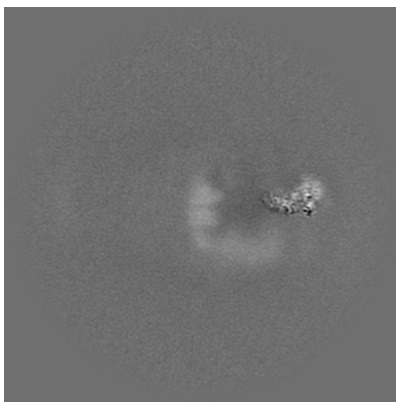
The images above show the map projected in three orthogonal directions.

6.2 Central slices [i](#)

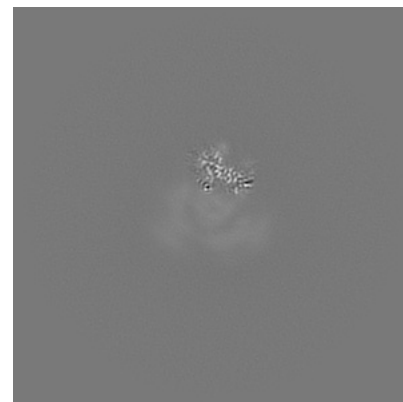
6.2.1 Primary map



X Index: 200

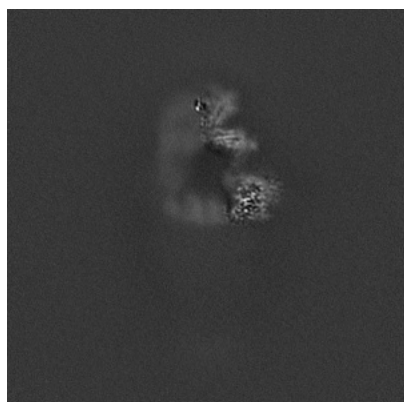


Y Index: 200

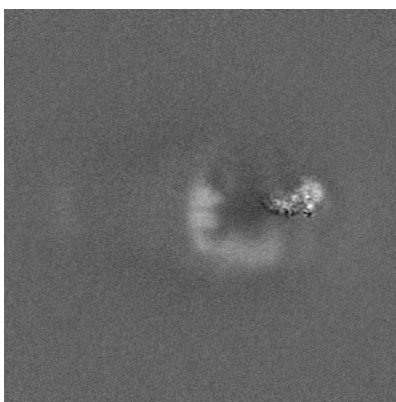


Z Index: 200

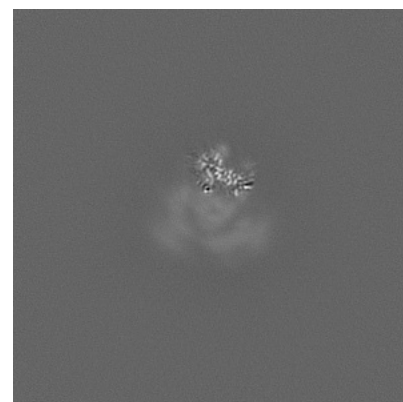
6.2.2 Raw map



X Index: 200



Y Index: 200

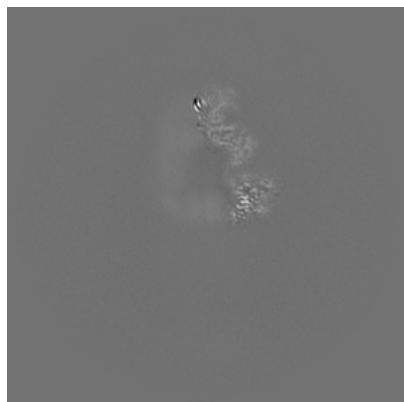


Z Index: 200

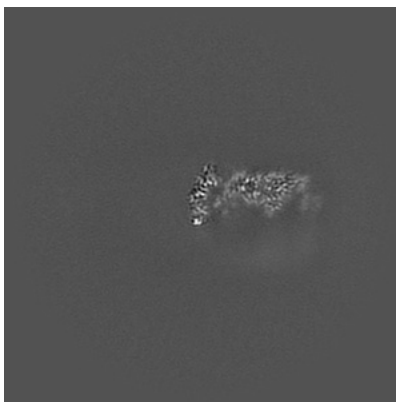
The images above show central slices of the map in three orthogonal directions.

6.3 Largest variance slices [i](#)

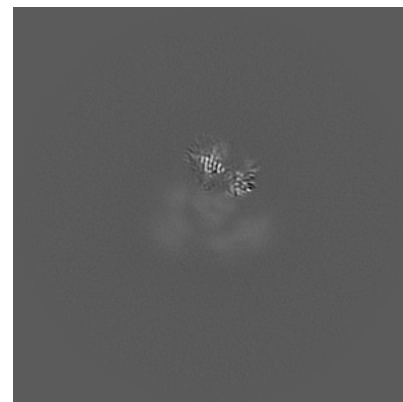
6.3.1 Primary map



X Index: 205

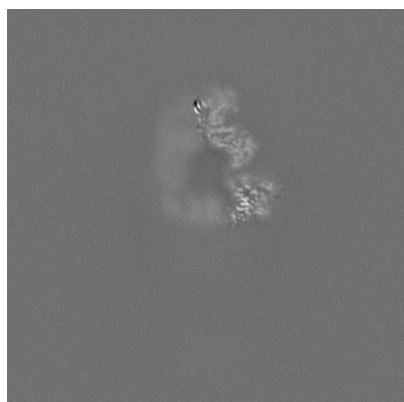


Y Index: 228

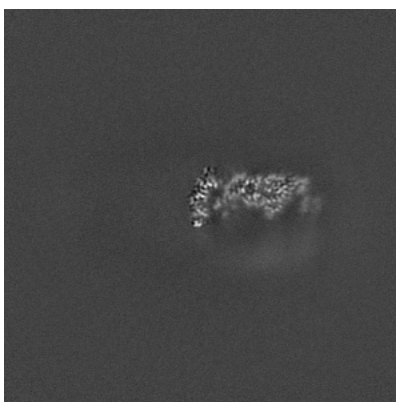


Z Index: 204

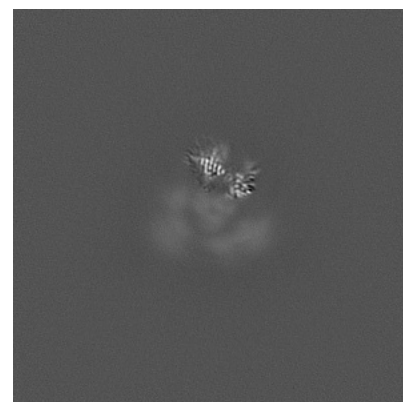
6.3.2 Raw map



X Index: 205



Y Index: 228

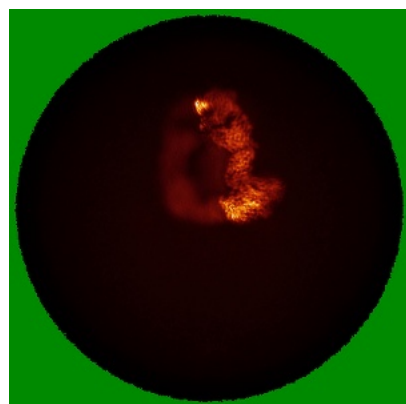


Z Index: 204

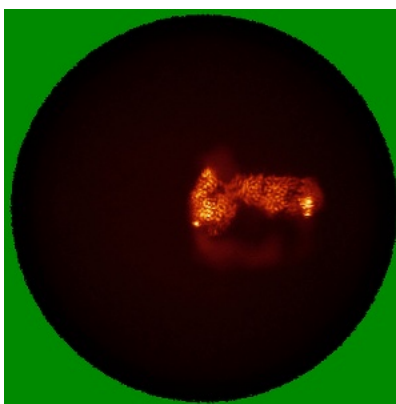
The images above show the largest variance slices of the map in three orthogonal directions.

6.4 Orthogonal standard-deviation projections (False-color) [i](#)

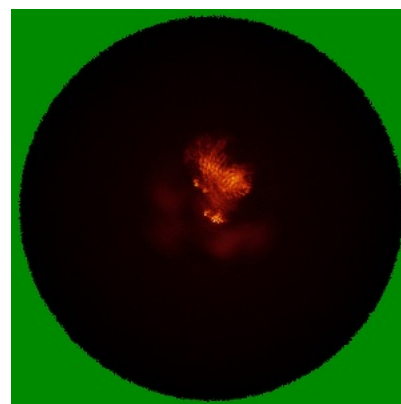
6.4.1 Primary map



X

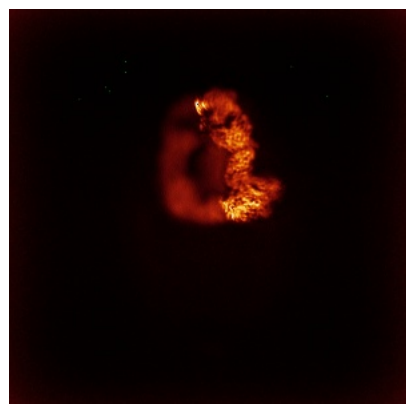


Y

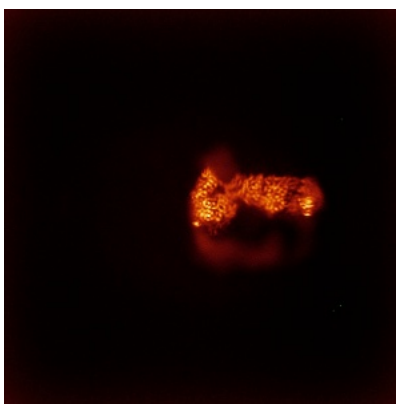


Z

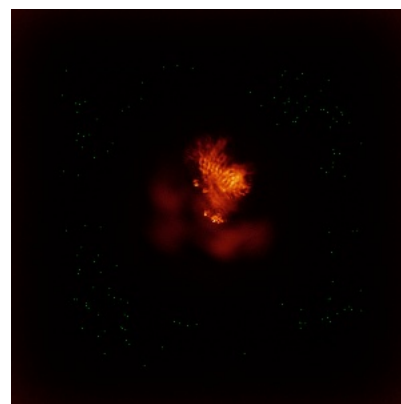
6.4.2 Raw map



X



Y

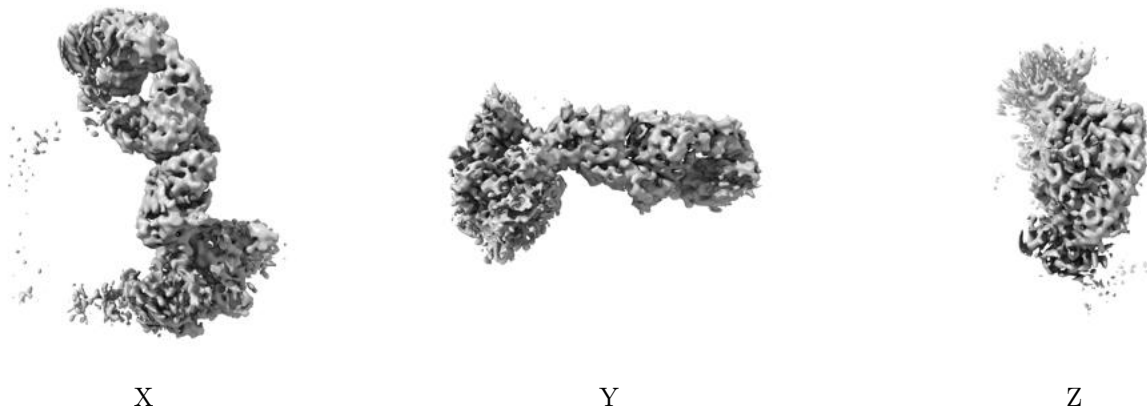


Z

The images above show the map standard deviation projections with false color in three orthogonal directions. Minimum values are shown in green, max in blue, and dark to light orange shades represent small to large values respectively.

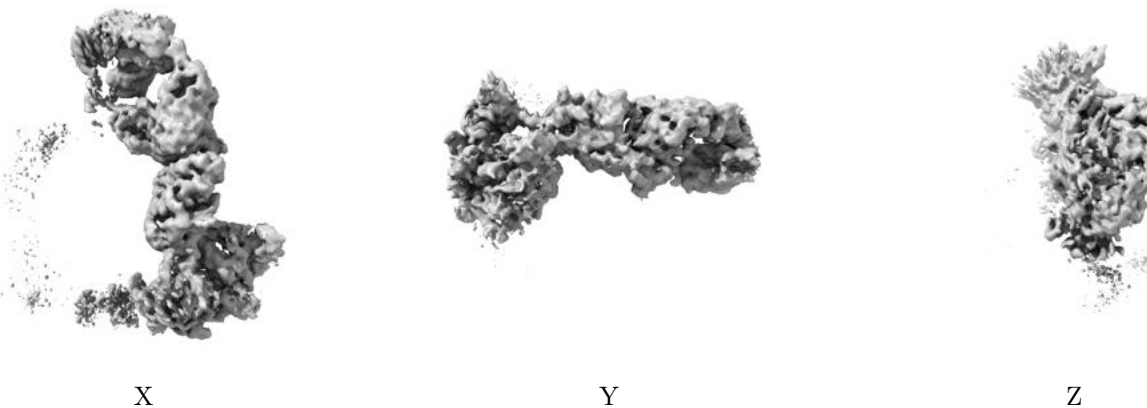
6.5 Orthogonal surface views [i](#)

6.5.1 Primary map



The images above show the 3D surface view of the map at the recommended contour level 0.4. These images, in conjunction with the slice images, may facilitate assessment of whether an appropriate contour level has been provided.

6.5.2 Raw map



These images show the 3D surface of the raw map. The raw map's contour level was selected so that its surface encloses the same volume as the primary map does at its recommended contour level.

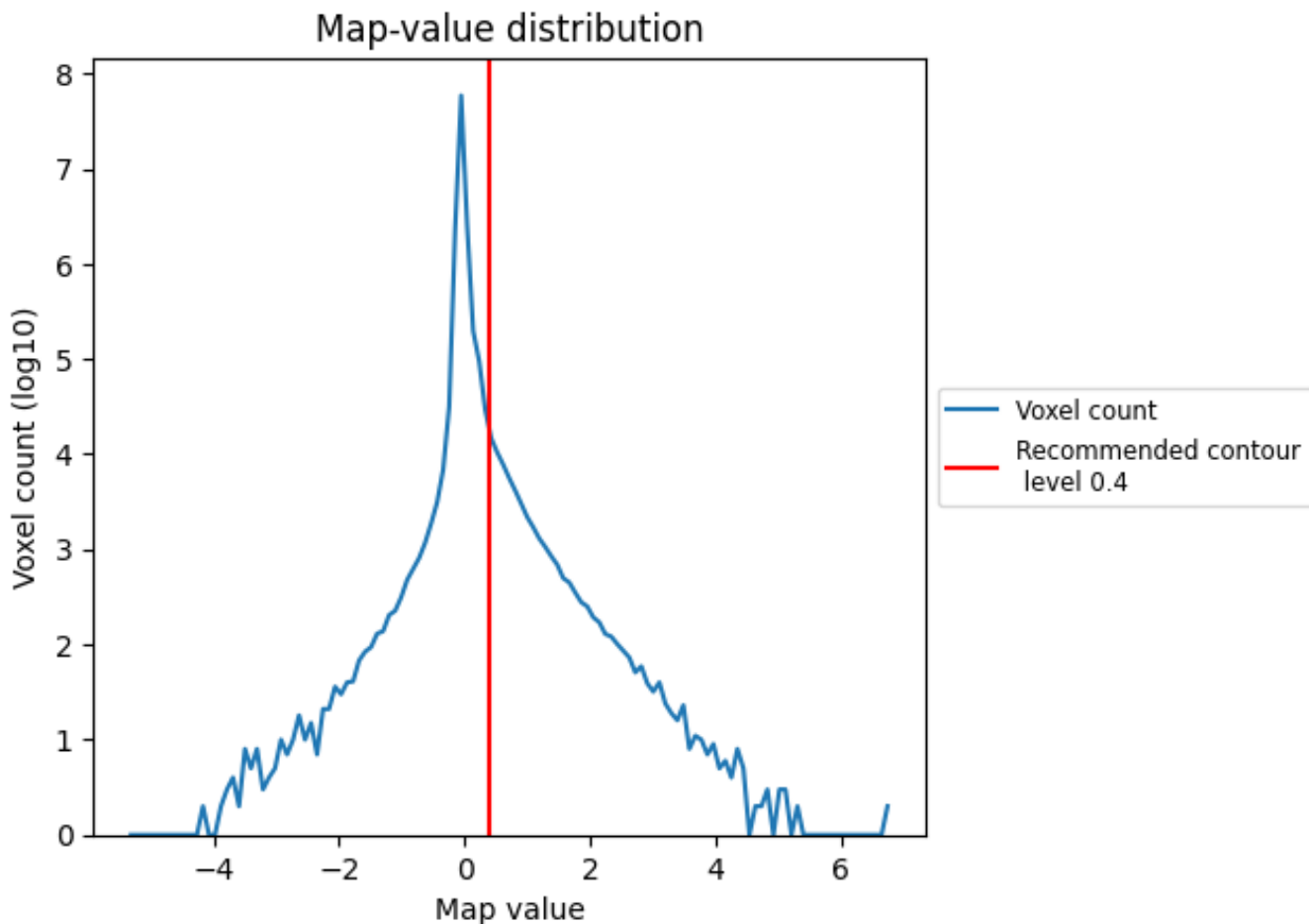
6.6 Mask visualisation [i](#)

This section was not generated. No masks/segmentation were deposited.

7 Map analysis [i](#)

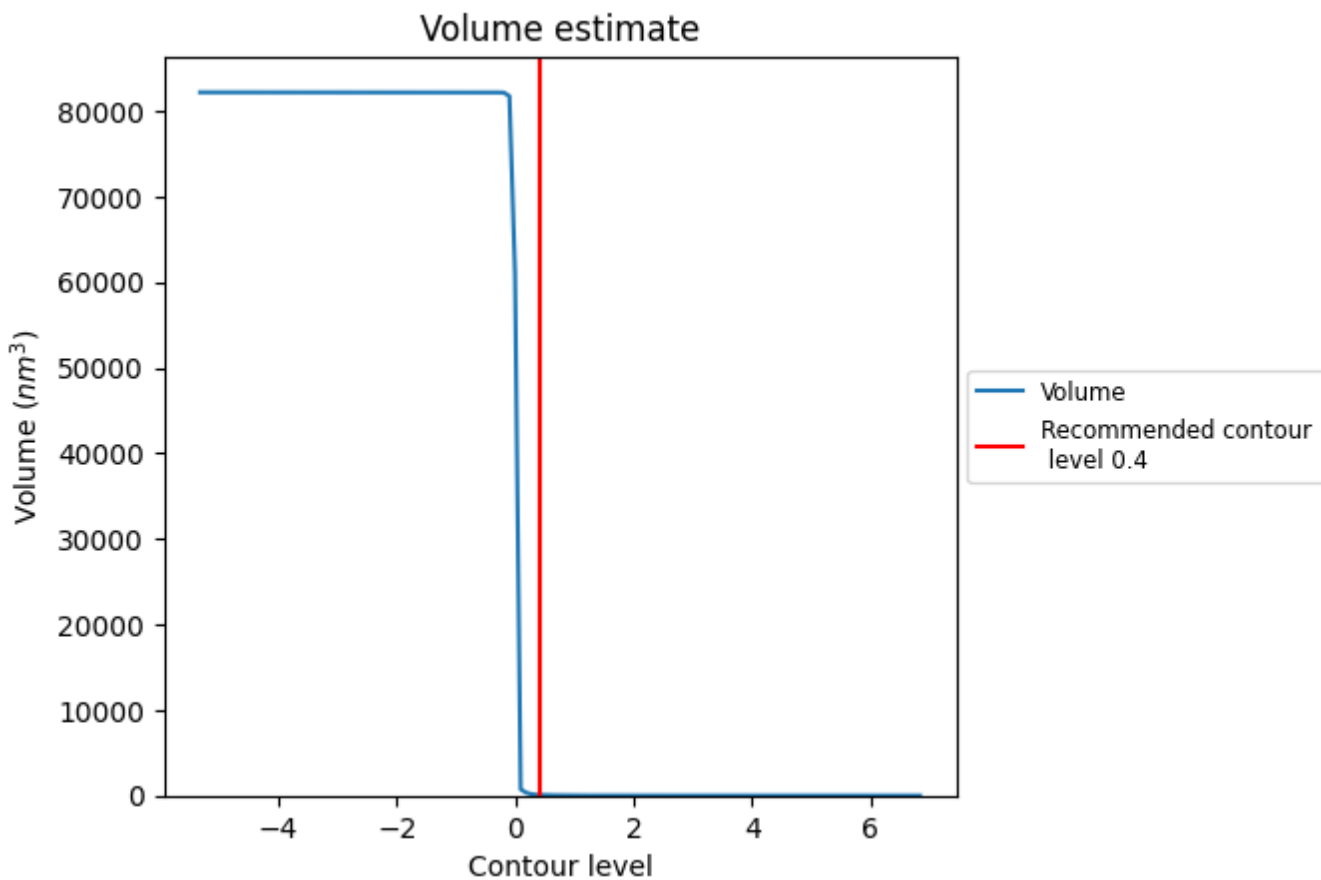
This section contains the results of statistical analysis of the map.

7.1 Map-value distribution [i](#)



The map-value distribution is plotted in 128 intervals along the x-axis. The y-axis is logarithmic. A spike in this graph at zero usually indicates that the volume has been masked.

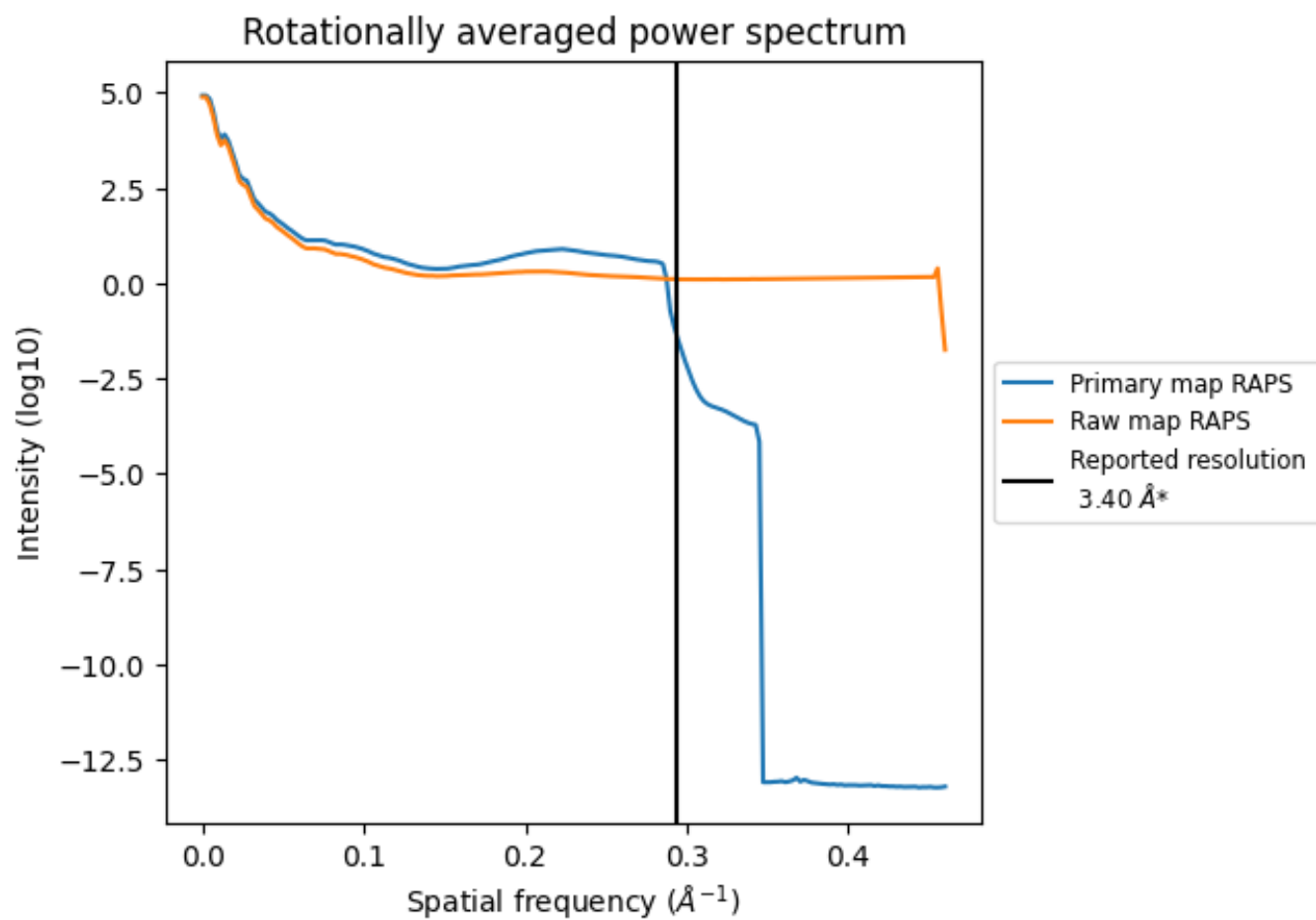
7.2 Volume estimate [i](#)



The volume at the recommended contour level is 80 nm³; this corresponds to an approximate mass of 73 kDa.

The volume estimate graph shows how the enclosed volume varies with the contour level. The recommended contour level is shown as a vertical line and the intersection between the line and the curve gives the volume of the enclosed surface at the given level.

7.3 Rotationally averaged power spectrum i

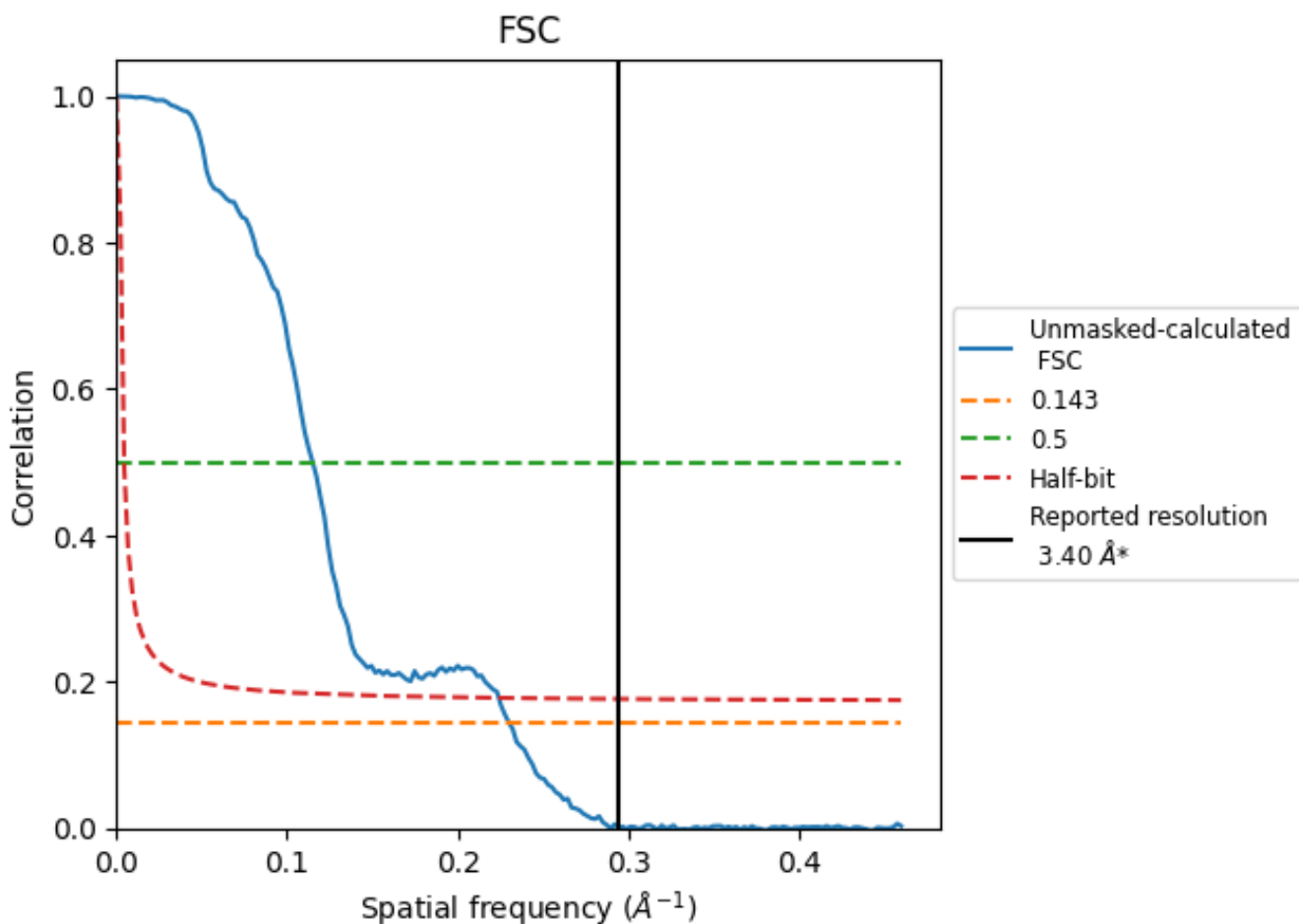


*Reported resolution corresponds to spatial frequency of 0.294 Å⁻¹

8 Fourier-Shell correlation [i](#)

Fourier-Shell Correlation (FSC) is the most commonly used method to estimate the resolution of single-particle and subtomogram-averaged maps. The shape of the curve depends on the imposed symmetry, mask and whether or not the two 3D reconstructions used were processed from a common reference. The reported resolution is shown as a black line. A curve is displayed for the half-bit criterion in addition to lines showing the 0.143 gold standard cut-off and 0.5 cut-off.

8.1 FSC [i](#)



*Reported resolution corresponds to spatial frequency of 0.294 Å⁻¹

8.2 Resolution estimates [i](#)

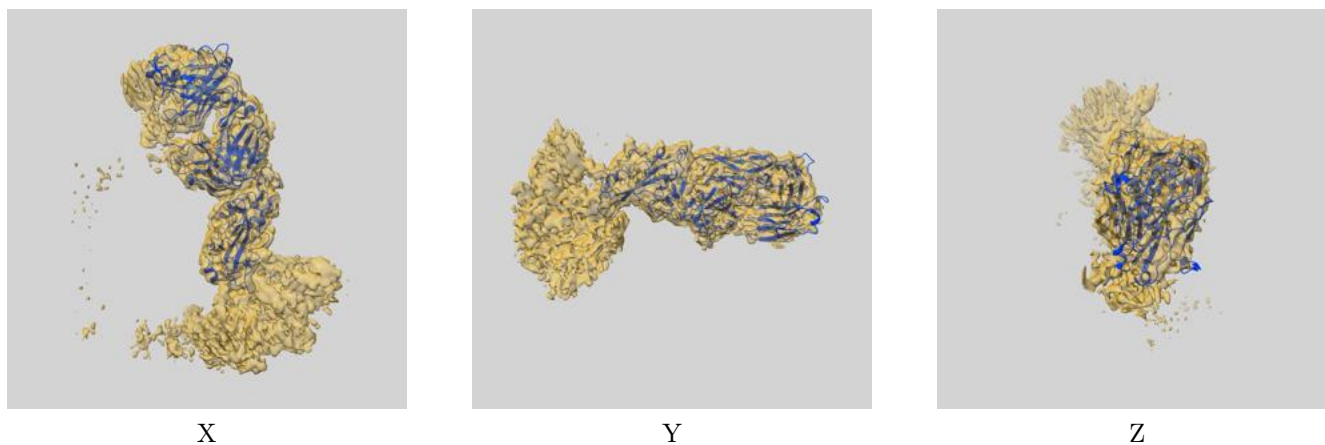
Resolution estimate (Å)	Estimation criterion (FSC cut-off)		
	0.143	0.5	Half-bit
Reported by author	3.40	-	-
Author-provided FSC curve	-	-	-
Unmasked-calculated*	4.34	8.70	4.46

*Resolution estimate based on FSC curve calculated by comparison of deposited half-maps. The value from deposited half-maps intersecting FSC 0.143 CUT-OFF 4.34 differs from the reported value 3.4 by more than 10 %

9 Map-model fit [i](#)

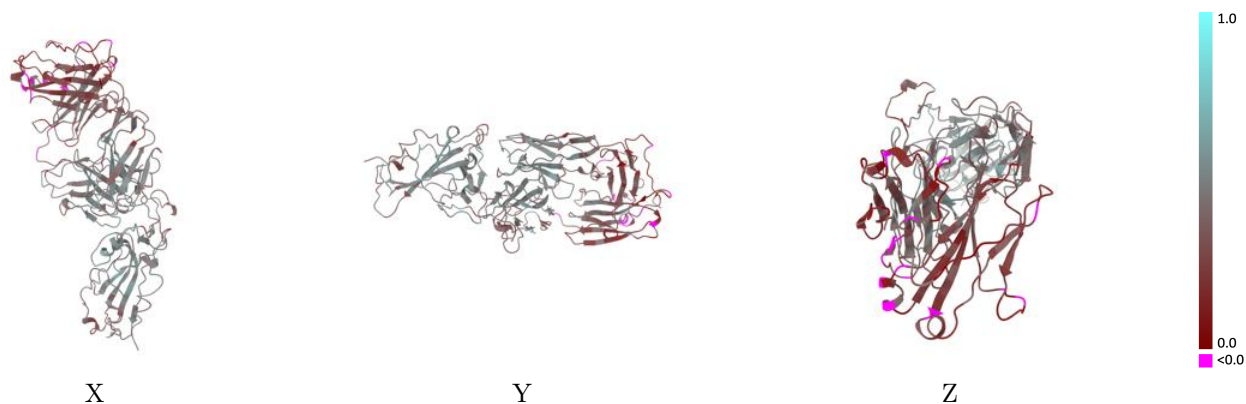
This section contains information regarding the fit between EMDB map EMD-39646 and PDB model 8YWX. Per-residue inclusion information can be found in section 3 on page 5.

9.1 Map-model overlay [i](#)



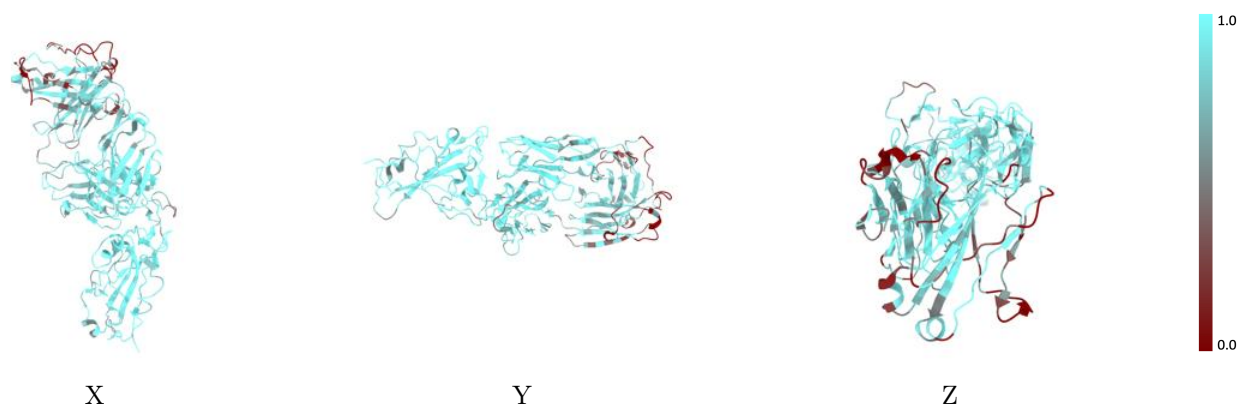
The images above show the 3D surface view of the map at the recommended contour level 0.4 at 50% transparency in yellow overlaid with a ribbon representation of the model coloured in blue. These images allow for the visual assessment of the quality of fit between the atomic model and the map.

9.2 Q-score mapped to coordinate model [\(i\)](#)



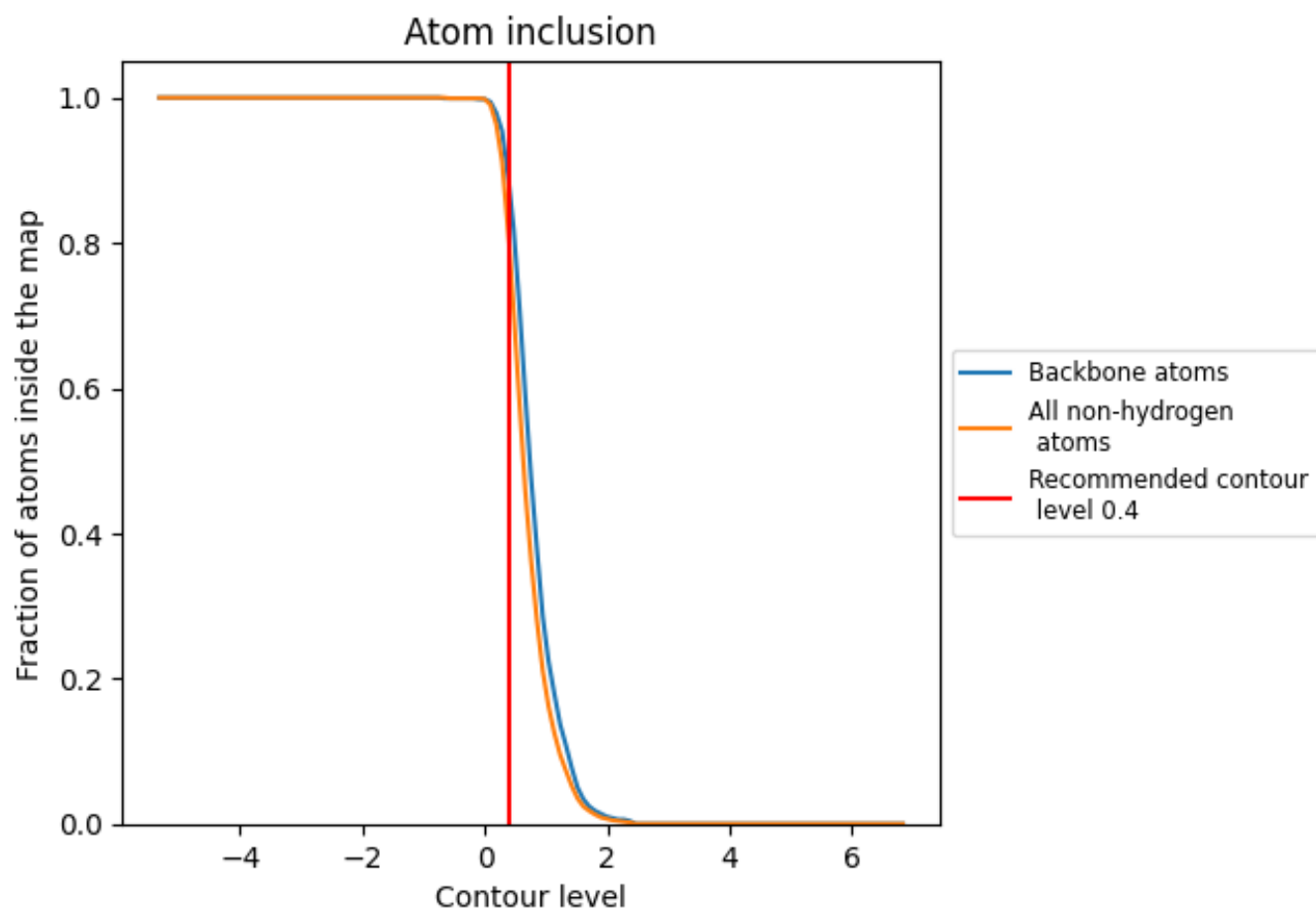
The images above show the model with each residue coloured according to its Q-score. This shows their resolvability in the map with higher Q-score values reflecting better resolvability. Please note: Q-score is calculating the resolvability of atoms, and thus high values are only expected at resolutions at which atoms can be resolved. Low Q-score values may therefore be expected for many entries.

9.3 Atom inclusion mapped to coordinate model [\(i\)](#)



The images above show the model with each residue coloured according to its atom inclusion. This shows to what extent they are inside the map at the recommended contour level (0.4).







9.4 Atom inclusion [i](#)



At the recommended contour level, 88% of all backbone atoms, 80% of all non-hydrogen atoms, are inside the map.

9.5 Map-model fit summary

The table lists the average atom inclusion at the recommended contour level (0.4) and Q-score for the entire model and for each chain.

Chain	Atom inclusion	Q-score
All	 0.7970	 0.3870
A	 0.8730	 0.4550
D	 0.7590	 0.3480
E	 0.7650	 0.3630

