



# Full wwPDB X-ray Structure Validation Report ⓘ

Jun 17, 2024 – 10:18 PM EDT

PDB ID : 5YXJ  
Title : FXR ligand binding domain  
Authors : Yi, L.; Yong, L.  
Deposited on : 2017-12-05  
Resolution : 2.62 Å(reported)

This is a Full wwPDB X-ray Structure Validation Report for a publicly released PDB entry.

We welcome your comments at [validation@mail.wwpdb.org](mailto:validation@mail.wwpdb.org)

A user guide is available at

<https://www.wwpdb.org/validation/2017/XrayValidationReportHelp>

with specific help available everywhere you see the ⓘ symbol.

The types of validation reports are described at

<http://www.wwpdb.org/validation/2017/FAQs#types>.

---

The following versions of software and data (see [references ⓘ](#)) were used in the production of this report:

MolProbity : 4.02b-467  
Mogul : 1.8.5 (274361), CSD as541be (2020)  
Xtriage (Phenix) : 1.13  
EDS : 2.37.1  
buster-report : 1.1.7 (2018)  
Percentile statistics : 20191225.v01 (using entries in the PDB archive December 25th 2019)  
Refmac : 5.8.0158  
CCP4 : 7.0.044 (Gargrove)  
Ideal geometry (proteins) : Engh & Huber (2001)  
Ideal geometry (DNA, RNA) : Parkinson et al. (1996)  
Validation Pipeline (wwPDB-VP) : 2.37.1

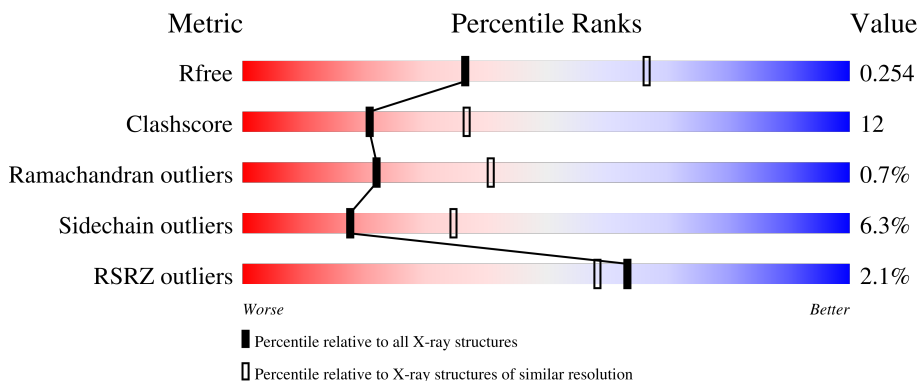
# 1 Overall quality at a glance

The following experimental techniques were used to determine the structure:

*X-RAY DIFFRACTION*

The reported resolution of this entry is 2.62 Å.

Percentile scores (ranging between 0-100) for global validation metrics of the entry are shown in the following graphic. The table shows the number of entries on which the scores are based.



Metric	Whole archive (#Entries)	Similar resolution (#Entries, resolution range(Å))
$R_{free}$	130704	3797 (2.64-2.60)
Clashscore	141614	4168 (2.64-2.60)
Ramachandran outliers	138981	4093 (2.64-2.60)
Sidechain outliers	138945	4093 (2.64-2.60)
RSRZ outliers	127900	3731 (2.64-2.60)

The table below summarises the geometric issues observed across the polymeric chains and their fit to the electron density. The red, orange, yellow and green segments of the lower bar indicate the fraction of residues that contain outliers for  $\geq 3$ , 2, 1 and 0 types of geometric quality criteria respectively. A grey segment represents the fraction of residues that are not modelled. The numeric value for each fraction is indicated below the corresponding segment, with a dot representing fractions  $\leq 5\%$ . The upper red bar (where present) indicates the fraction of residues that have poor fit to the electron density. The numeric value is given above the bar.

Mol	Chain	Length	Quality of chain
1	A	229	
1	B	229	
2	C	11	
2	D	11	

## 2 Entry composition [i](#)

There are 4 unique types of molecules in this entry. The entry contains 4027 atoms, of which 0 are hydrogens and 0 are deuteriums.

In the tables below, the ZeroOcc column contains the number of atoms modelled with zero occupancy, the AltConf column contains the number of residues with at least one atom in alternate conformation and the Trace column contains the number of residues modelled with at most 2 atoms.

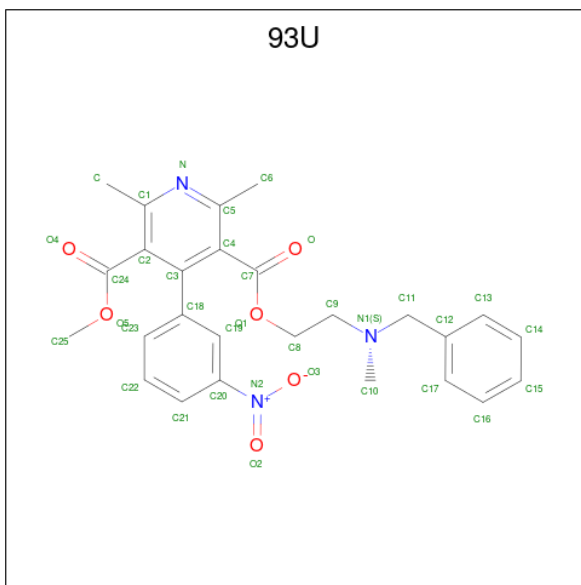
- Molecule 1 is a protein called Bile acid receptor.

Mol	Chain	Residues	Atoms					ZeroOcc	AltConf	Trace
			Total	C	N	O	S			
1	A	225	Total 1845	C 1177	N 310	O 347	S 11	0	0	0
1	B	220	Total 1809	C 1159	N 301	O 338	S 11	0	0	0

- Molecule 2 is a protein called Peptide from Nuclear receptor coactivator 2.

Mol	Chain	Residues	Atoms				ZeroOcc	AltConf	Trace
			Total	C	N	O			
2	C	11	Total 94	C 61	N 16	O 17	0	0	0
2	D	11	Total 94	C 61	N 16	O 17	0	0	0

- Molecule 3 is 2-[benzyl(methyl)amino]ethyl methyl 2,6-dimethyl-4-(3-nitrophenyl)pyridine-3,5-dicarboxylate (three-letter code: 93U) (formula: C<sub>26</sub>H<sub>27</sub>N<sub>3</sub>O<sub>6</sub>).



Mol	Chain	Residues	Atoms				ZeroOcc	AltConf
3	A	1	Total	C	N	O	0	0
			35	26	3	6		
3	B	1	Total	C	N	O	0	0
			35	26	3	6		

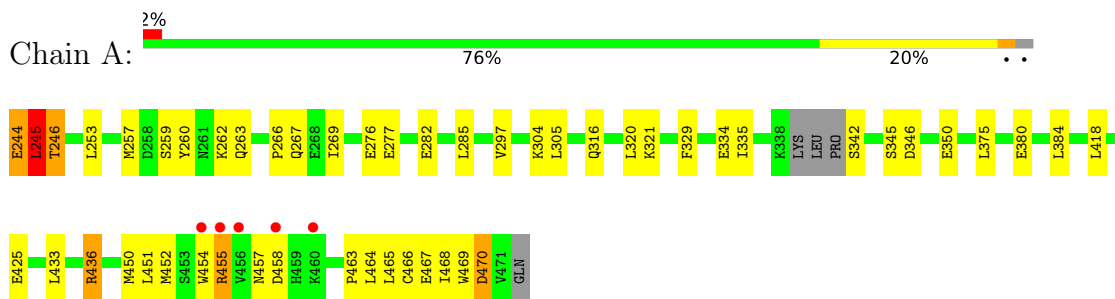
- Molecule 4 is water.

Mol	Chain	Residues	Atoms		ZeroOcc	AltConf
4	A	80	Total	O	0	0
			80	80		
4	B	31	Total	O	0	0
			31	31		
4	C	1	Total	O	0	0
			1	1		
4	D	3	Total	O	0	0
			3	3		

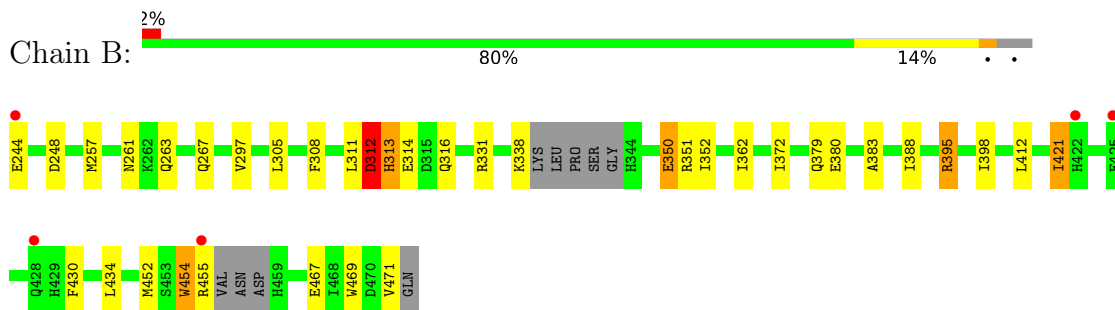
### 3 Residue-property plots [i](#)

These plots are drawn for all protein, RNA, DNA and oligosaccharide chains in the entry. The first graphic for a chain summarises the proportions of the various outlier classes displayed in the second graphic. The second graphic shows the sequence view annotated by issues in geometry and electron density. Residues are color-coded according to the number of geometric quality criteria for which they contain at least one outlier: green = 0, yellow = 1, orange = 2 and red = 3 or more. A red dot above a residue indicates a poor fit to the electron density ( $RSRZ > 2$ ). Stretches of 2 or more consecutive residues without any outlier are shown as a green connector. Residues present in the sample, but not in the model, are shown in grey.

- Molecule 1: Bile acid receptor



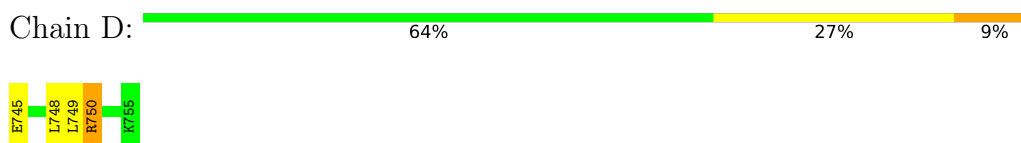
- Molecule 1: Bile acid receptor



- Molecule 2: Peptide from Nuclear receptor coactivator 2



- Molecule 2: Peptide from Nuclear receptor coactivator 2



## 4 Data and refinement statistics

Property	Value	Source
Space group	C 1 2 1	Depositor
Cell constants a, b, c, $\alpha$ , $\beta$ , $\gamma$	163.35Å 34.98Å 118.93Å 90.00° 103.38° 90.00°	Depositor
Resolution (Å)	115.70 – 2.62 38.57 – 2.62	Depositor EDS
% Data completeness (in resolution range)	87.5 (115.70-2.62) 87.6 (38.57-2.62)	Depositor EDS
$R_{merge}$	(Not available)	Depositor
$R_{sym}$	(Not available)	Depositor
$\langle I/\sigma(I) \rangle$ <sup>1</sup>	3.67 (at 2.61Å)	Xtrriage
Refinement program	REFMAC 5.8.0189	Depositor
R, $R_{free}$	0.206 , 0.248 0.210 , 0.254	Depositor DCC
$R_{free}$ test set	892 reflections (5.01%)	wwPDB-VP
Wilson B-factor (Å <sup>2</sup> )	46.8	Xtrriage
Anisotropy	0.091	Xtrriage
Bulk solvent $k_{sol}$ (e/Å <sup>3</sup> ), $B_{sol}$ (Å <sup>2</sup> )	0.30 , 33.4	EDS
L-test for twinning <sup>2</sup>	$\langle  L  \rangle = 0.48$ , $\langle L^2 \rangle = 0.32$	Xtrriage
Estimated twinning fraction	No twinning to report.	Xtrriage
$F_o, F_c$ correlation	0.94	EDS
Total number of atoms	4027	wwPDB-VP
Average B, all atoms (Å <sup>2</sup> )	56.0	wwPDB-VP

Xtrriage's analysis on translational NCS is as follows: *The largest off-origin peak in the Patterson function is 7.38% of the height of the origin peak. No significant pseudotranslation is detected.*

<sup>1</sup>Intensities estimated from amplitudes.

<sup>2</sup>Theoretical values of  $\langle |L| \rangle$ ,  $\langle L^2 \rangle$  for acentric reflections are 0.5, 0.333 respectively for untwinned datasets, and 0.375, 0.2 for perfectly twinned datasets.

## 5 Model quality [i](#)

### 5.1 Standard geometry [i](#)

Bond lengths and bond angles in the following residue types are not validated in this section: 93U

The Z score for a bond length (or angle) is the number of standard deviations the observed value is removed from the expected value. A bond length (or angle) with  $|Z| > 5$  is considered an outlier worth inspection. RMSZ is the root-mean-square of all Z scores of the bond lengths (or angles).

Mol	Chain	Bond lengths		Bond angles	
		RMSZ	# Z  >5	RMSZ	# Z  >5
1	A	0.80	1/1883 (0.1%)	0.99	6/2542 (0.2%)
1	B	0.71	1/1846 (0.1%)	0.93	6/2491 (0.2%)
2	C	0.78	0/94	1.01	0/125
2	D	0.78	0/94	1.04	0/125
All	All	0.76	2/3917 (0.1%)	0.96	12/5283 (0.2%)

Chiral center outliers are detected by calculating the chiral volume of a chiral center and verifying if the center is modelled as a planar moiety or with the opposite hand. A planarity outlier is detected by checking planarity of atoms in a peptide group, atoms in a mainchain group or atoms of a sidechain that are expected to be planar.

Mol	Chain	#Chirality outliers	#Planarity outliers
1	A	0	1

All (2) bond length outliers are listed below:

Mol	Chain	Res	Type	Atoms	Z	Observed(Å)	Ideal(Å)
1	A	245	LEU	C-N	-8.97	1.13	1.34
1	B	454	TRP	CB-CG	-7.27	1.37	1.50

All (12) bond angle outliers are listed below:

Mol	Chain	Res	Type	Atoms	Z	Observed(°)	Ideal(°)
1	B	312	ASP	CB-CA-C	14.16	138.73	110.40
1	A	245	LEU	O-C-N	-13.19	101.59	122.70
1	A	246	THR	N-CA-CB	8.84	127.09	110.30
1	B	312	ASP	N-CA-C	-7.55	90.60	111.00
1	B	351	ARG	NE-CZ-NH1	6.53	123.56	120.30
1	A	245	LEU	CB-CA-C	6.31	122.18	110.20
1	A	245	LEU	CA-C-N	6.28	131.01	117.20

*Continued on next page...*

Continued from previous page...

Mol	Chain	Res	Type	Atoms	Z	Observed(°)	Ideal(°)
1	A	246	THR	N-CA-C	-6.10	94.52	111.00
1	B	452	MET	CA-CB-CG	5.38	122.45	113.30
1	B	452	MET	CB-CG-SD	5.12	127.77	112.40
1	A	436	ARG	NE-CZ-NH1	5.08	122.84	120.30
1	B	331	ARG	NE-CZ-NH2	-5.03	117.78	120.30

There are no chirality outliers.

All (1) planarity outliers are listed below:

Mol	Chain	Res	Type	Group
1	A	245	LEU	Mainchain

## 5.2 Too-close contacts [i](#)

In the following table, the Non-H and H(model) columns list the number of non-hydrogen atoms and hydrogen atoms in the chain respectively. The H(added) column lists the number of hydrogen atoms added and optimized by MolProbity. The Clashes column lists the number of clashes within the asymmetric unit, whereas Symm-Clashes lists symmetry-related clashes.

Mol	Chain	Non-H	H(model)	H(added)	Clashes	Symm-Clashes
1	A	1845	0	1826	69	0
1	B	1809	0	1797	21	1
2	C	94	0	99	5	0
2	D	94	0	99	7	0
3	A	35	0	0	3	0
3	B	35	0	0	0	0
4	A	80	0	0	44	0
4	B	31	0	0	2	0
4	C	1	0	0	0	0
4	D	3	0	0	0	0
All	All	4027	0	3821	94	1

The all-atom clashscore is defined as the number of clashes found per 1000 atoms (including hydrogen atoms). The all-atom clashscore for this structure is 12.

All (94) close contacts within the same asymmetric unit are listed below, sorted by their clash magnitude.

Atom-1	Atom-2	Interatomic distance (Å)	Clash overlap (Å)
1:A:468:ILE:HG23	4:A:602:HOH:O	1.38	1.23

Continued on next page...



*Continued from previous page...*

Atom-1	Atom-2	Interatomic distance (Å)	Clash overlap (Å)
1:A:335:ILE:C	4:A:604:HOH:O	1.80	1.18
1:A:469:TRP:N	4:A:602:HOH:O	1.79	1.13
1:A:257:MET:SD	4:A:663:HOH:O	2.06	1.13
1:A:466:CYS:HB2	4:A:605:HOH:O	1.60	0.99
1:A:463:PRO:C	4:A:603:HOH:O	2.06	0.92
1:A:463:PRO:O	4:A:603:HOH:O	1.89	0.90
1:A:335:ILE:HG22	1:A:335:ILE:O	1.72	0.88
1:A:468:ILE:C	4:A:602:HOH:O	2.09	0.87
1:A:244:GLU:O	1:A:245:LEU:CB	2.22	0.87
1:B:311:LEU:O	1:B:312:ASP:HB2	1.80	0.81
1:A:244:GLU:HG2	4:A:609:HOH:O	1.81	0.81
1:A:470:ASP:N	4:A:606:HOH:O	2.13	0.80
1:A:463:PRO:O	4:A:605:HOH:O	2.00	0.78
1:A:468:ILE:CG2	4:A:602:HOH:O	2.10	0.76
1:A:464:LEU:N	4:A:608:HOH:O	2.14	0.76
1:A:469:TRP:CD2	4:A:623:HOH:O	2.39	0.74
1:A:244:GLU:N	4:A:609:HOH:O	2.21	0.72
1:B:308:PHE:CZ	1:B:316:GLN:HB2	2.25	0.71
1:B:467:GLU:HB3	2:C:749:LEU:HD11	1.73	0.70
1:A:466:CYS:O	4:A:606:HOH:O	2.09	0.69
1:A:335:ILE:O	4:A:604:HOH:O	1.97	0.67
1:A:276:GLU:OE1	4:A:607:HOH:O	2.11	0.67
1:A:316:GLN:HE21	2:D:750:ARG:HH22	1.47	0.63
1:A:335:ILE:O	1:A:335:ILE:CG2	2.44	0.63
1:B:313:HIS:HD2	1:B:314:GLU:HG3	1.65	0.61
1:B:261:ASN:OD1	1:B:379:GLN:NE2	2.35	0.60
1:A:467:GLU:HB3	4:A:610:HOH:O	2.02	0.59
1:A:266:PRO:HG2	1:A:269:ILE:HD12	1.84	0.59
1:A:244:GLU:CG	4:A:609:HOH:O	2.46	0.58
1:A:346:ASP:OD2	1:B:350:GLU:HG3	2.04	0.58
1:A:455:ARG:HA	4:A:614:HOH:O	2.03	0.57
1:A:253:LEU:HD23	1:A:253:LEU:C	2.26	0.56
1:B:313:HIS:CD2	1:B:314:GLU:HG3	2.40	0.56
1:A:375:LEU:HD13	1:A:433:LEU:HD23	1.87	0.56
1:A:470:ASP:N	4:A:615:HOH:O	2.38	0.56
1:A:463:PRO:C	4:A:601:HOH:O	2.44	0.55
4:A:603:HOH:O	2:D:748:LEU:HD23	2.06	0.55
1:A:467:GLU:C	4:A:606:HOH:O	2.46	0.55
1:A:335:ILE:CA	4:A:604:HOH:O	2.40	0.54
1:A:375:LEU:HD13	1:A:433:LEU:CD2	2.38	0.54
1:A:244:GLU:HB3	4:A:668:HOH:O	2.07	0.54

*Continued on next page...*

*Continued from previous page...*

Atom-1	Atom-2	Interatomic distance (Å)	Clash overlap (Å)
1:A:375:LEU:HD11	1:A:436:ARG:CG	2.39	0.53
1:B:257:MET:HE1	1:B:380:GLU:HA	1.92	0.52
1:A:260:TYR:OH	1:A:334:GLU:OE2	2.17	0.52
1:A:384:LEU:HD12	1:A:418:LEU:HD12	1.91	0.52
1:B:316:GLN:NE2	2:C:750:ARG:HH22	2.07	0.51
1:A:450:MET:SD	3:A:501:93U:C22	2.98	0.51
1:B:316:GLN:HE21	2:C:750:ARG:HH12	1.58	0.51
1:B:395:ARG:O	1:B:398:ILE:HG12	2.12	0.50
4:A:610:HOH:O	2:D:749:LEU:CD1	2.60	0.50
1:B:311:LEU:O	1:B:312:ASP:CB	2.53	0.50
1:A:465:LEU:HA	4:A:623:HOH:O	2.11	0.49
4:A:610:HOH:O	2:D:749:LEU:HD11	2.12	0.49
1:B:244:GLU:HG2	1:B:421:ILE:HD11	1.93	0.49
1:B:430:PHE:CE2	1:B:434:LEU:HD11	2.47	0.49
2:C:749:LEU:H	2:C:749:LEU:HD12	1.78	0.49
1:A:375:LEU:HD11	1:A:436:ARG:HG2	1.94	0.49
1:A:384:LEU:CD1	1:A:418:LEU:HD12	2.42	0.48
1:A:467:GLU:C	4:A:610:HOH:O	2.50	0.48
1:B:257:MET:HE1	1:B:383:ALA:HB3	1.95	0.48
1:A:244:GLU:CB	4:A:668:HOH:O	2.61	0.48
1:A:263:GLN:HB3	1:A:297:VAL:HG13	1.96	0.47
1:A:244:GLU:O	1:A:244:GLU:HG3	2.14	0.47
1:B:263:GLN:HB3	1:B:297:VAL:HG13	1.96	0.47
1:B:454:TRP:CD1	4:B:611:HOH:O	2.56	0.47
4:A:603:HOH:O	2:D:748:LEU:CD2	2.63	0.45
1:A:469:TRP:CG	4:A:623:HOH:O	2.67	0.45
1:A:455:ARG:CA	4:A:614:HOH:O	2.62	0.45
1:A:452:MET:O	1:A:457:ASN:ND2	2.48	0.45
1:B:388:ILE:HD13	1:B:412:LEU:HD12	1.99	0.44
1:A:316:GLN:HE21	2:D:750:ARG:NH2	2.13	0.44
1:A:329:PHE:HZ	3:A:501:93U:C22	2.31	0.43
1:A:259:SER:OG	1:A:304:LYS:HB2	2.18	0.43
1:A:463:PRO:CA	4:A:601:HOH:O	2.66	0.43
1:A:266:PRO:HG2	1:A:269:ILE:CD1	2.48	0.43
1:A:329:PHE:HZ	3:A:501:93U:C23	2.32	0.43
1:A:257:MET:CE	1:A:380:GLU:HA	2.49	0.43
1:A:464:LEU:HB2	4:A:625:HOH:O	2.18	0.43
1:A:316:GLN:NE2	2:D:750:ARG:HH22	2.15	0.42
1:A:463:PRO:HD2	4:A:669:HOH:O	2.19	0.42
1:A:470:ASP:HA	4:A:606:HOH:O	2.19	0.42
2:C:754:ASP:O	2:C:755:LYS:HB2	2.19	0.42

*Continued on next page...*

Continued from previous page...

Atom-1	Atom-2	Interatomic distance (Å)	Clash overlap (Å)
1:A:257:MET:HE1	1:A:380:GLU:HA	2.01	0.41
1:A:375:LEU:HD11	1:A:436:ARG:HG3	2.01	0.41
1:A:467:GLU:N	4:A:605:HOH:O	2.53	0.41
1:A:450:MET:O	1:A:451:LEU:C	2.59	0.41
1:A:466:CYS:N	4:A:601:HOH:O	2.06	0.41
1:A:454:TRP:C	4:A:614:HOH:O	2.59	0.40
1:A:470:ASP:CA	4:A:606:HOH:O	2.66	0.40
1:B:469:TRP:NE1	4:B:602:HOH:O	2.33	0.40
1:A:321:LYS:HE3	4:A:615:HOH:O	2.20	0.40
1:A:346:ASP:OD2	1:B:350:GLU:CG	2.70	0.40
1:B:352:ILE:CG2	1:B:362:ILE:HD12	2.52	0.40

All (1) symmetry-related close contacts are listed below. The label for Atom-2 includes the symmetry operator and encoded unit-cell translations to be applied.

Atom-1	Atom-2	Interatomic distance (Å)	Clash overlap (Å)
1:B:267:GLN:CG	1:B:455:ARG:C[1_565]	2.18	0.02

## 5.3 Torsion angles [i](#)

### 5.3.1 Protein backbone [i](#)

In the following table, the Percentiles column shows the percent Ramachandran outliers of the chain as a percentile score with respect to all X-ray entries followed by that with respect to entries of similar resolution.

The Analysed column shows the number of residues for which the backbone conformation was analysed, and the total number of residues.

Mol	Chain	Analysed	Favoured	Allowed	Outliers	Percentiles	
1	A	221/229 (96%)	212 (96%)	8 (4%)	1 (0%)	29	50
1	B	214/229 (93%)	206 (96%)	6 (3%)	2 (1%)	17	33
2	C	9/11 (82%)	9 (100%)	0	0	100	100
2	D	9/11 (82%)	9 (100%)	0	0	100	100
All	All	453/480 (94%)	436 (96%)	14 (3%)	3 (1%)	22	41

All (3) Ramachandran outliers are listed below:

Mol	Chain	Res	Type
1	A	245	LEU
1	B	312	ASP
1	B	421	ILE

### 5.3.2 Protein sidechains [i](#)

In the following table, the Percentiles column shows the percent sidechain outliers of the chain as a percentile score with respect to all X-ray entries followed by that with respect to entries of similar resolution.

The Analysed column shows the number of residues for which the sidechain conformation was analysed, and the total number of residues.

Mol	Chain	Analysed	Rotameric	Outliers	Percentiles	
1	A	207/212 (98%)	191 (92%)	16 (8%)	13	24
1	B	203/212 (96%)	195 (96%)	8 (4%)	32	56
2	C	10/10 (100%)	9 (90%)	1 (10%)	7	13
2	D	10/10 (100%)	8 (80%)	2 (20%)	1	2
All	All	430/444 (97%)	403 (94%)	27 (6%)	18	35

All (27) residues with a non-rotameric sidechain are listed below:

Mol	Chain	Res	Type
1	A	244	GLU
1	A	246	THR
1	A	262	LYS
1	A	267	GLN
1	A	277	GLU
1	A	282	GLU
1	A	285	LEU
1	A	305	LEU
1	A	320	LEU
1	A	342	SER
1	A	345	SER
1	A	350	GLU
1	A	425	GLU
1	A	455	ARG
1	A	458	ASP
1	A	470	ASP
1	B	248	ASP
1	B	305	LEU
1	B	313	HIS

*Continued on next page...*

*Continued from previous page...*

Mol	Chain	Res	Type
1	B	338	LYS
1	B	350	GLU
1	B	372	ILE
1	B	395	ARG
1	B	471	VAL
2	C	745	GLU
2	D	745	GLU
2	D	750	ARG

Sometimes sidechains can be flipped to improve hydrogen bonding and reduce clashes. All (4) such sidechains are listed below:

Mol	Chain	Res	Type
1	A	316	GLN
1	A	344	HIS
1	B	313	HIS
1	B	316	GLN

### 5.3.3 RNA [i](#)

There are no RNA molecules in this entry.

## 5.4 Non-standard residues in protein, DNA, RNA chains [i](#)

There are no non-standard protein/DNA/RNA residues in this entry.

## 5.5 Carbohydrates [i](#)

There are no monosaccharides in this entry.

## 5.6 Ligand geometry [i](#)

2 ligands are modelled in this entry.

In the following table, the Counts columns list the number of bonds (or angles) for which Mogul statistics could be retrieved, the number of bonds (or angles) that are observed in the model and the number of bonds (or angles) that are defined in the Chemical Component Dictionary. The Link column lists molecule types, if any, to which the group is linked. The Z score for a bond length (or angle) is the number of standard deviations the observed value is removed from the expected value. A bond length (or angle) with  $|Z| > 2$  is considered an outlier worth inspection. RMSZ is the root-mean-square of all Z scores of the bond lengths (or angles).

Mol	Type	Chain	Res	Link	Bond lengths			Bond angles		
					Counts	RMSZ	# Z  > 2	Counts	RMSZ	# Z  > 2
3	93U	B	501	-	36,37,37	2.57	8 (22%)	49,51,51	2.53	15 (30%)
3	93U	A	501	-	36,37,37	2.64	8 (22%)	49,51,51	2.57	10 (20%)

In the following table, the Chirals column lists the number of chiral outliers, the number of chiral centers analysed, the number of these observed in the model and the number defined in the Chemical Component Dictionary. Similar counts are reported in the Torsion and Rings columns. '-' means no outliers of that kind were identified.

Mol	Type	Chain	Res	Link	Chirals	Torsions	Rings
3	93U	B	501	-	-	12/26/28/28	0/3/3/3
3	93U	A	501	-	-	10/26/28/28	0/3/3/3

All (16) bond length outliers are listed below:

Mol	Chain	Res	Type	Atoms	Z	Observed(Å)	Ideal(Å)
3	B	501	93U	O2-N2	10.84	1.41	1.22
3	A	501	93U	O2-N2	9.40	1.38	1.22
3	A	501	93U	C3-C4	5.86	1.50	1.40
3	A	501	93U	O5-C24	4.80	1.44	1.33
3	A	501	93U	C2-C1	4.73	1.49	1.41
3	A	501	93U	C3-C2	4.61	1.48	1.40
3	A	501	93U	C4-C5	4.48	1.49	1.41
3	B	501	93U	O1-C7	4.29	1.44	1.33
3	B	501	93U	C3-C4	4.24	1.47	1.40
3	B	501	93U	C4-C5	4.23	1.48	1.41
3	B	501	93U	C2-C1	4.21	1.48	1.41
3	B	501	93U	O5-C24	4.21	1.42	1.33
3	A	501	93U	O1-C7	4.05	1.43	1.33
3	B	501	93U	C3-C2	3.78	1.47	1.40
3	B	501	93U	C20-N2	-2.15	1.39	1.45
3	A	501	93U	C20-N2	-2.07	1.40	1.45

All (25) bond angle outliers are listed below:

Mol	Chain	Res	Type	Atoms	Z	Observed(°)	Ideal(°)
3	A	501	93U	C2-C3-C18	-9.99	101.57	121.52
3	A	501	93U	C4-C3-C18	-9.87	101.80	121.52
3	B	501	93U	C2-C3-C18	-9.73	102.09	121.52
3	B	501	93U	C4-C3-C18	-7.73	106.07	121.52
3	A	501	93U	O1-C7-C4	5.35	124.39	112.33
3	B	501	93U	C25-O5-C24	-4.82	106.56	115.83

*Continued on next page...*

*Continued from previous page...*

Mol	Chain	Res	Type	Atoms	Z	Observed(°)	Ideal(°)
3	B	501	93U	C2-C1-N	-4.26	117.84	121.83
3	A	501	93U	C5-N-C1	4.19	125.81	119.64
3	B	501	93U	C5-N-C1	4.00	125.53	119.64
3	A	501	93U	O1-C7-O	-3.42	116.73	123.67
3	B	501	93U	O1-C7-C4	3.33	119.83	112.33
3	A	501	93U	C4-C5-N	-3.16	118.87	121.83
3	B	501	93U	O5-C24-C2	2.93	119.31	112.27
3	B	501	93U	C3-C2-C24	-2.82	114.82	120.31
3	A	501	93U	C22-C23-C18	2.79	124.06	120.56
3	B	501	93U	O1-C7-O	-2.77	118.04	123.67
3	A	501	93U	C25-O5-C24	2.27	120.22	115.83
3	A	501	93U	O5-C24-O4	-2.23	119.08	123.45
3	B	501	93U	C13-C12-C17	2.20	121.63	118.17
3	B	501	93U	C21-C20-N2	2.19	121.02	119.38
3	B	501	93U	C3-C2-C1	2.17	122.01	119.88
3	B	501	93U	C8-O1-C7	2.15	120.97	116.43
3	A	501	93U	C2-C1-N	-2.09	119.88	121.83
3	B	501	93U	O5-C24-O4	-2.06	119.41	123.45
3	B	501	93U	C1-C2-C24	2.02	123.06	119.96

There are no chirality outliers.

All (22) torsion outliers are listed below:

Mol	Chain	Res	Type	Atoms
3	A	501	93U	C2-C24-O5-C25
3	B	501	93U	C2-C24-O5-C25
3	A	501	93U	O4-C24-O5-C25
3	B	501	93U	O4-C24-O5-C25
3	A	501	93U	O1-C8-C9-N1
3	A	501	93U	C4-C7-O1-C8
3	B	501	93U	C19-C18-C3-C4
3	B	501	93U	C23-C18-C3-C4
3	B	501	93U	O1-C8-C9-N1
3	B	501	93U	C3-C2-C24-O4
3	A	501	93U	O-C7-O1-C8
3	B	501	93U	C3-C4-C7-O
3	A	501	93U	C3-C4-C7-O
3	B	501	93U	C1-C2-C24-O5
3	A	501	93U	C9-C8-O1-C7
3	B	501	93U	C1-C2-C24-O4
3	B	501	93U	C3-C2-C24-O5
3	A	501	93U	C1-C2-C24-O4

*Continued on next page...*

*Continued from previous page...*

Mol	Chain	Res	Type	Atoms
3	A	501	93U	C5-C4-C7-O1
3	A	501	93U	C3-C4-C7-O1
3	B	501	93U	C5-C4-C7-O1
3	B	501	93U	C3-C4-C7-O1

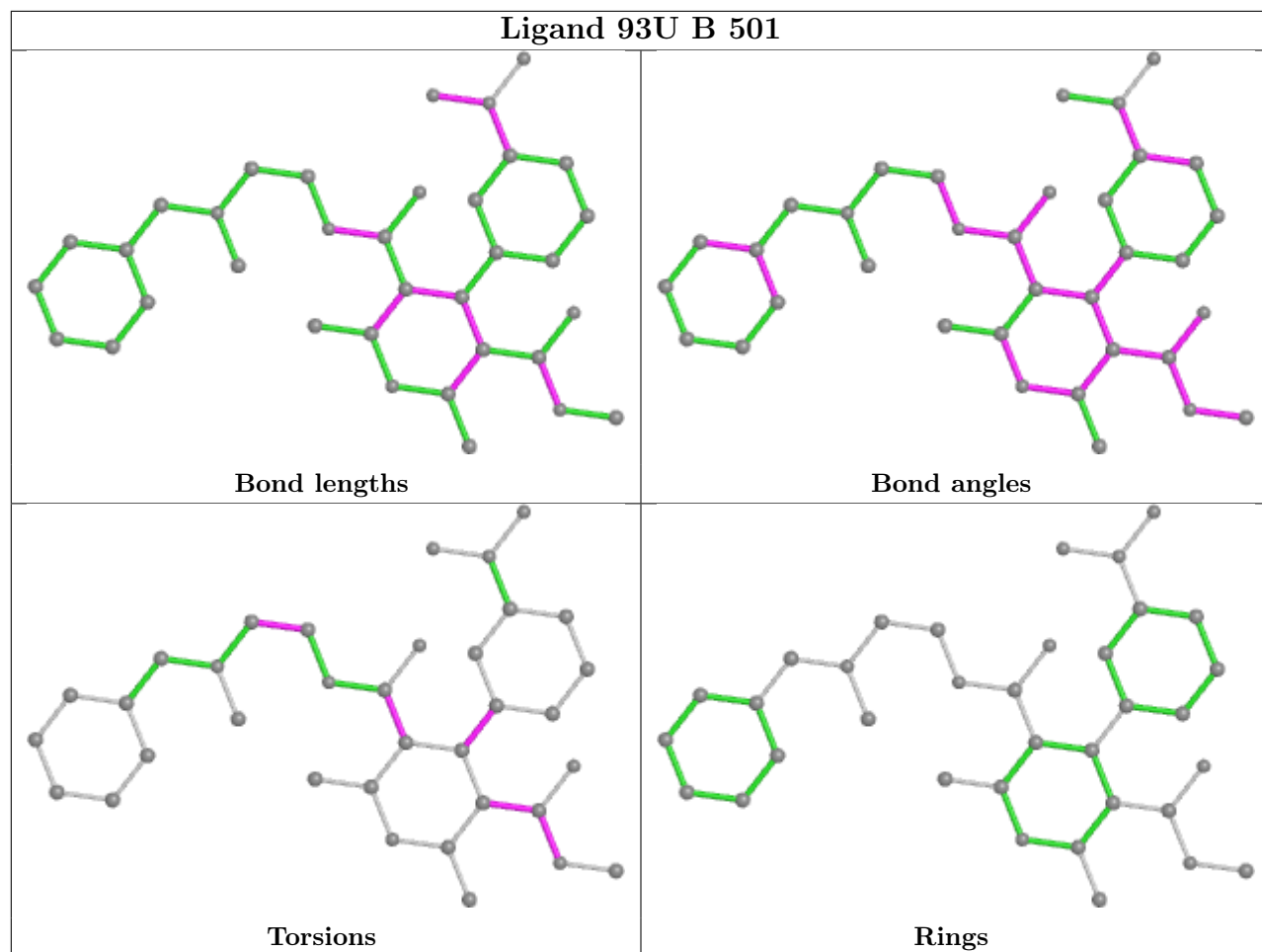
There are no ring outliers.

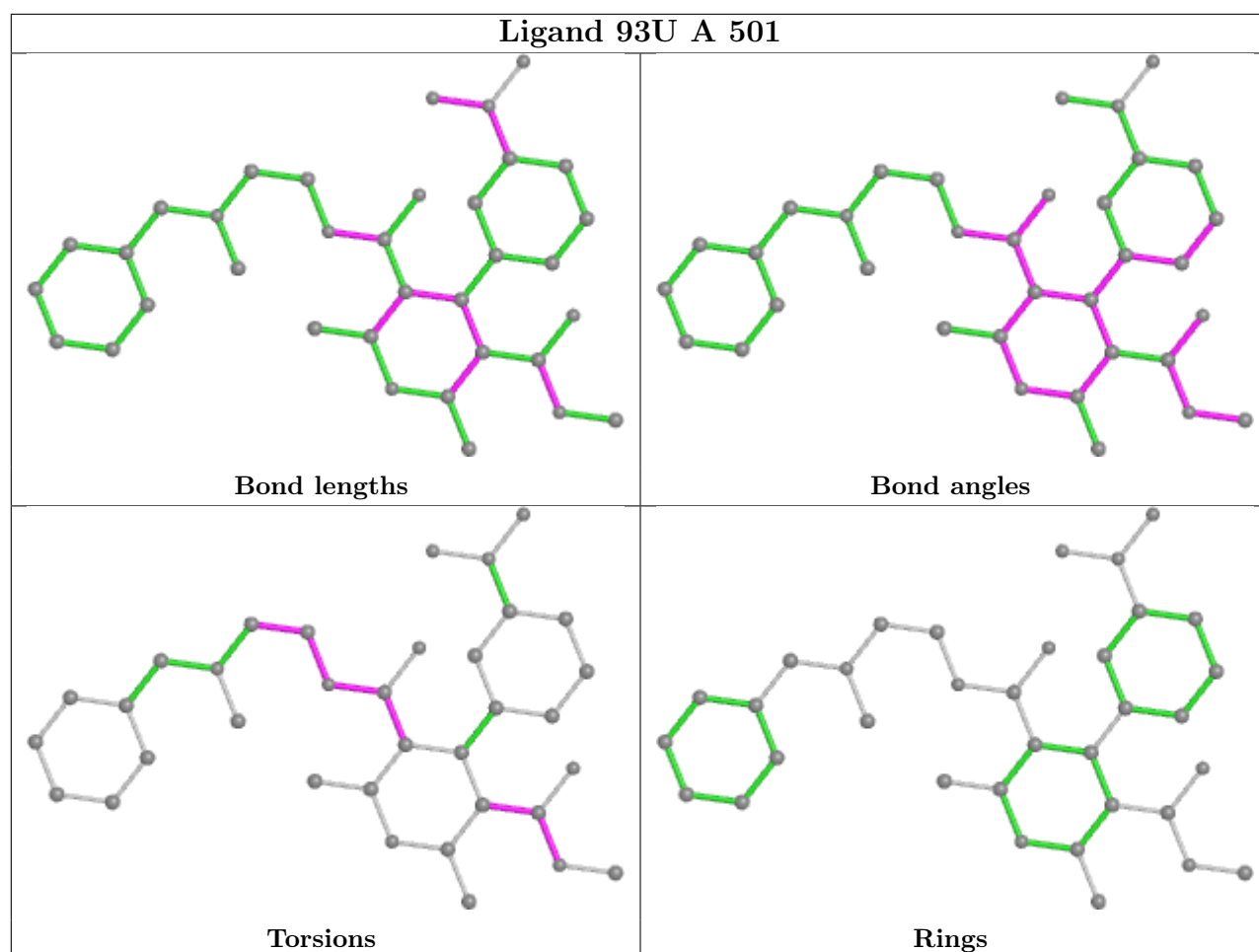
1 monomer is involved in 3 short contacts:

Mol	Chain	Res	Type	Clashes	Symm-Clashes
3	A	501	93U	3	0

The following is a two-dimensional graphical depiction of Mogul quality analysis of bond lengths, bond angles, torsion angles, and ring geometry for all instances of the Ligand of Interest. In addition, ligands with molecular weight > 250 and outliers as shown on the validation Tables will also be included. For torsion angles, if less than 5% of the Mogul distribution of torsion angles is within 10 degrees of the torsion angle in question, then that torsion angle is considered an outlier. Any bond that is central to one or more torsion angles identified as an outlier by Mogul will be highlighted in the graph. For rings, the root-mean-square deviation (RMSD) between the ring in question and similar rings identified by Mogul is calculated over all ring torsion angles. If the average RMSD is greater than 60 degrees and the minimal RMSD between the ring in question and any Mogul-identified rings is also greater than 60 degrees, then that ring is considered an outlier. The outliers are highlighted in purple. The color gray indicates Mogul did not find sufficient equivalents in the CSD to analyse the geometry.







## 5.7 Other polymers [i](#)

There are no such residues in this entry.

## 5.8 Polymer linkage issues [i](#)

The following chains have linkage breaks:

Mol	Chain	Number of breaks
1	A	1

All chain breaks are listed below:

Model	Chain	Residue-1	Atom-1	Residue-2	Atom-2	Distance (Å)
1	A	245:LEU	C	246:THR	N	1.13

## 6 Fit of model and data [i](#)

### 6.1 Protein, DNA and RNA chains [i](#)

In the following table, the column labelled ‘#RSRZ> 2’ contains the number (and percentage) of RSRZ outliers, followed by percent RSRZ outliers for the chain as percentile scores relative to all X-ray entries and entries of similar resolution. The OWAB column contains the minimum, median, 95<sup>th</sup> percentile and maximum values of the occupancy-weighted average B-factor per residue. The column labelled ‘Q< 0.9’ lists the number of (and percentage) of residues with an average occupancy less than 0.9.

Mol	Chain	Analysed	<RSRZ>	#RSRZ>2	OWAB(Å <sup>2</sup> )	Q<0.9
1	A	225/229 (98%)	-0.47	5 (2%) 62 57	29, 42, 75, 154	0
1	B	220/229 (96%)	-0.36	5 (2%) 60 55	37, 57, 110, 145	0
2	C	11/11 (100%)	-0.70	0 100 100	43, 53, 76, 91	0
2	D	11/11 (100%)	-0.96	0 100 100	37, 45, 59, 79	0
All	All	467/480 (97%)	-0.44	10 (2%) 63 58	29, 50, 94, 154	0

All (10) RSRZ outliers are listed below:

Mol	Chain	Res	Type	RSRZ
1	A	454	TRP	6.9
1	A	455	ARG	4.1
1	B	422	HIS	3.5
1	B	455	ARG	2.9
1	B	425	GLU	2.5
1	B	428	GLN	2.2
1	B	244	GLU	2.1
1	A	458	ASP	2.1
1	A	456	VAL	2.1
1	A	460	LYS	2.1

### 6.2 Non-standard residues in protein, DNA, RNA chains [i](#)

There are no non-standard protein/DNA/RNA residues in this entry.

### 6.3 Carbohydrates [i](#)

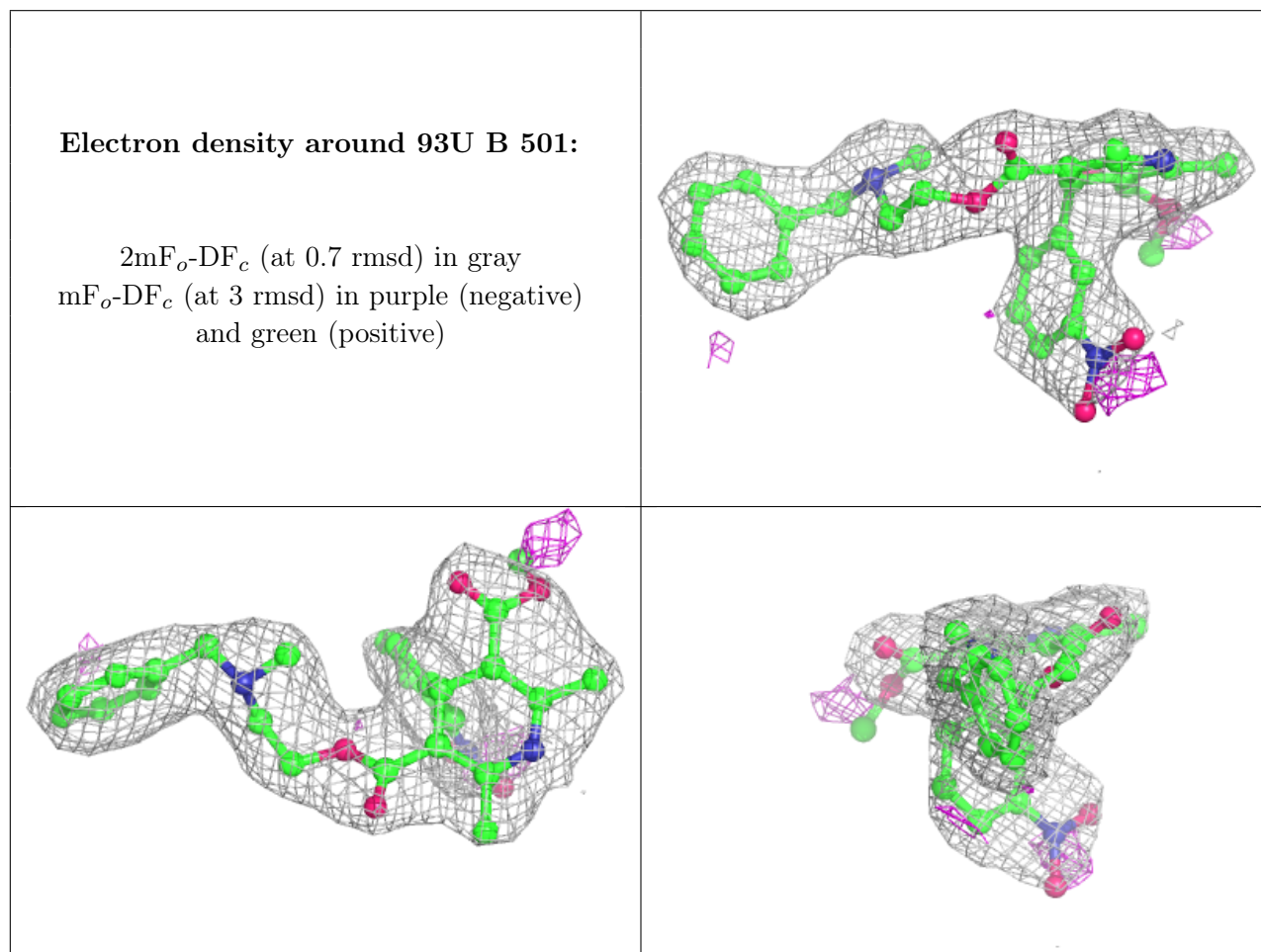
There are no monosaccharides in this entry.

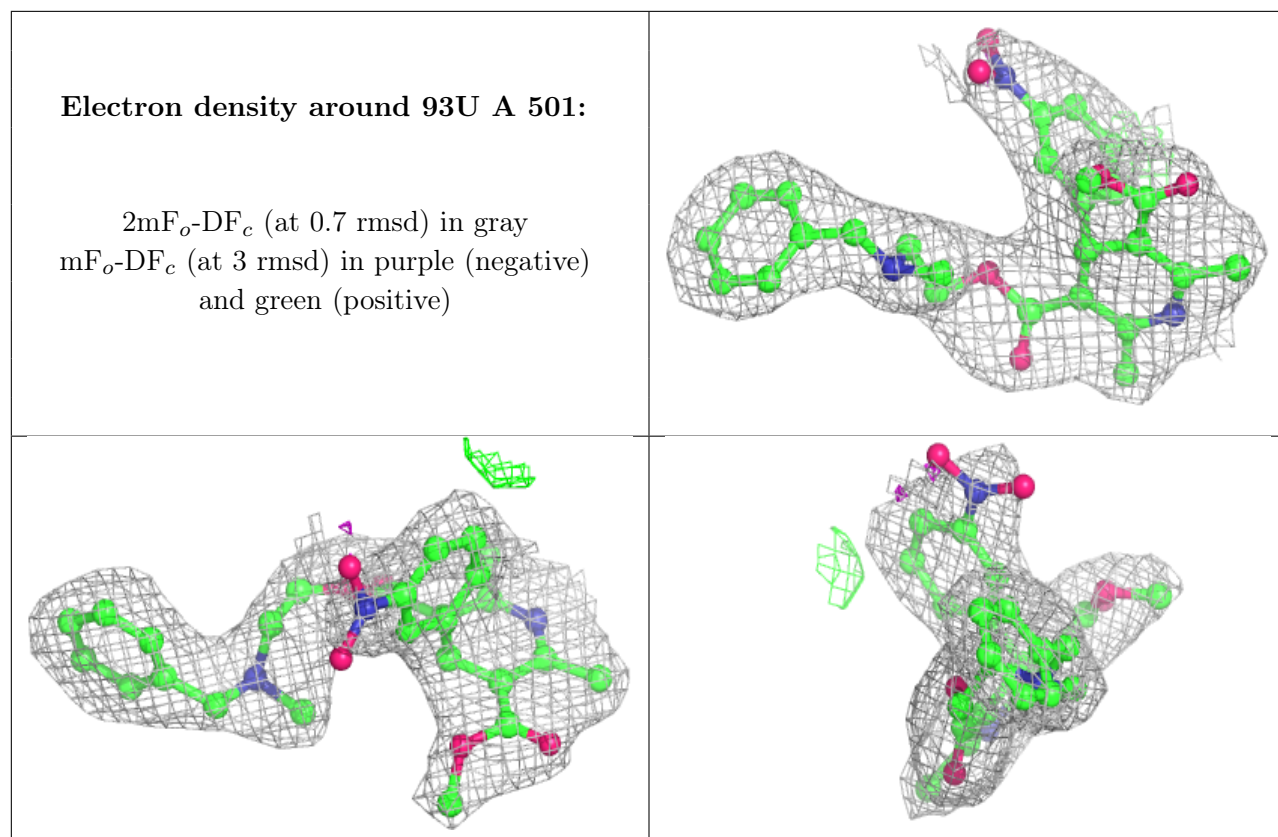
## 6.4 Ligands [i](#)

In the following table, the Atoms column lists the number of modelled atoms in the group and the number defined in the chemical component dictionary. The B-factors column lists the minimum, median, 95<sup>th</sup> percentile and maximum values of B factors of atoms in the group. The column labelled 'Q<0.9' lists the number of atoms with occupancy less than 0.9.

Mol	Type	Chain	Res	Atoms	RSCC	RSR	B-factors(Å <sup>2</sup> )	Q<0.9
3	93U	B	501	35/35	0.94	0.17	34,53,72,83	0
3	93U	A	501	35/35	0.95	0.15	30,42,64,92	0

The following is a graphical depiction of the model fit to experimental electron density of all instances of the Ligand of Interest. In addition, ligands with molecular weight > 250 and outliers as shown on the geometry validation Tables will also be included. Each fit is shown from different orientation to approximate a three-dimensional view.





## 6.5 Other polymers [i](#)

There are no such residues in this entry.