



Full wwPDB X-ray Structure Validation Report ⓘ

Apr 22, 2025 – 02:05 AM EDT

PDB ID : 2YY2 / pdb_00002yy2
Title : Crystal structure of the human Phosphodiesterase 9A catalytic domain complexed with IBMX
Authors : Handa, N.; Shirouzu, M.; Terada, T.; Omori, K.; Kotera, J.; Yokoyama, S.; RIKEN Structural Genomics/Proteomics Initiative (RSGI)
Deposited on : 2007-04-27
Resolution : 2.80 Å(reported)

This is a Full wwPDB X-ray Structure Validation Report for a publicly released PDB entry.

We welcome your comments at validation@mail.wwpdb.org

A user guide is available at

<https://www.wwpdb.org/validation/2017/XrayValidationReportHelp>

with specific help available everywhere you see the ⓘ symbol.

The types of validation reports are described at

<http://www.wwpdb.org/validation/2017/FAQs#types>.

The following versions of software and data (see [references ⓘ](#)) were used in the production of this report:

MolProbity : 4.02b-467
Mogul : 2022.3.0, CSD as543be (2022)
Xtriage (Phenix) : 2.0rc1
EDS : 3.0
Percentile statistics : 20231227.v01 (using entries in the PDB archive December 27th 2023)
CCP4 : 9.0.006 (Gargrove)
Density-Fitness : 1.0.12
Ideal geometry (proteins) : Engh & Huber (2001)
Ideal geometry (DNA, RNA) : Parkinson et al. (1996)
Validation Pipeline (wwPDB-VP) : 2.42

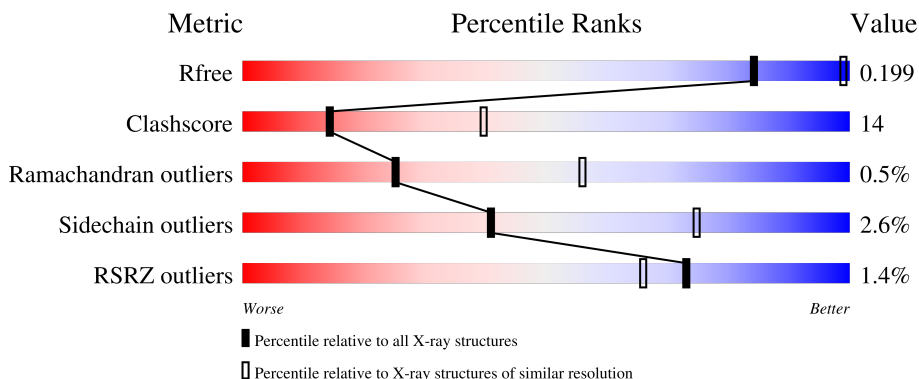
1 Overall quality at a glance

The following experimental techniques were used to determine the structure:

X-RAY DIFFRACTION


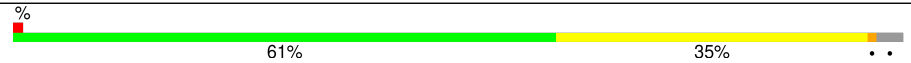
The reported resolution of this entry is 2.80 Å.

Percentile scores (ranging between 0-100) for global validation metrics of the entry are shown in the following graphic. The table shows the number of entries on which the scores are based.



Metric	Whole archive (#Entries)	Similar resolution (#Entries, resolution range(Å))
R_{free}	164625	3657 (2.80-2.80)
Clashscore	180529	4123 (2.80-2.80)
Ramachandran outliers	177936	4071 (2.80-2.80)
Sidechain outliers	177891	4073 (2.80-2.80)
RSRZ outliers	164620	3659 (2.80-2.80)

The table below summarises the geometric issues observed across the polymeric chains and their fit to the electron density. The red, orange, yellow and green segments of the lower bar indicate the fraction of residues that contain outliers for ≥ 3 , 2, 1 and 0 types of geometric quality criteria respectively. A grey segment represents the fraction of residues that are not modelled. The numeric value for each fraction is indicated below the corresponding segment, with a dot representing fractions $\leq 5\%$. The upper red bar (where present) indicates the fraction of residues that have poor fit to the electron density. The numeric value is given above the bar.

Mol	Chain	Length	Quality of chain
1	A	333	
1	B	333	

2 Entry composition [i](#)

There are 5 unique types of molecules in this entry. The entry contains 5512 atoms, of which 0 are hydrogens and 0 are deuteriums.

In the tables below, the ZeroOcc column contains the number of atoms modelled with zero occupancy, the AltConf column contains the number of residues with at least one atom in alternate conformation and the Trace column contains the number of residues modelled with at most 2 atoms.

- Molecule 1 is a protein called High-affinity cGMP-specific 3',5'-cyclic phosphodiesterase 9A.

Mol	Chain	Residues	Atoms					ZeroOcc	AltConf	Trace
			Total	C	N	O	S			
1	A	326	2695	1727	446	492	30	0	0	0
1	B	324	2676	1715	442	489	30	0	0	0

There are 14 discrepancies between the modelled and reference sequences:

Chain	Residue	Modelled	Actual	Comment	Reference
A	174	GLY	-	expression tag	UNP O76083
A	175	SER	-	expression tag	UNP O76083
A	176	SER	-	expression tag	UNP O76083
A	177	GLY	-	expression tag	UNP O76083
A	178	SER	-	expression tag	UNP O76083
A	179	SER	-	expression tag	UNP O76083
A	180	GLY	-	expression tag	UNP O76083
B	174	GLY	-	expression tag	UNP O76083
B	175	SER	-	expression tag	UNP O76083
B	176	SER	-	expression tag	UNP O76083
B	177	GLY	-	expression tag	UNP O76083
B	178	SER	-	expression tag	UNP O76083
B	179	SER	-	expression tag	UNP O76083
B	180	GLY	-	expression tag	UNP O76083

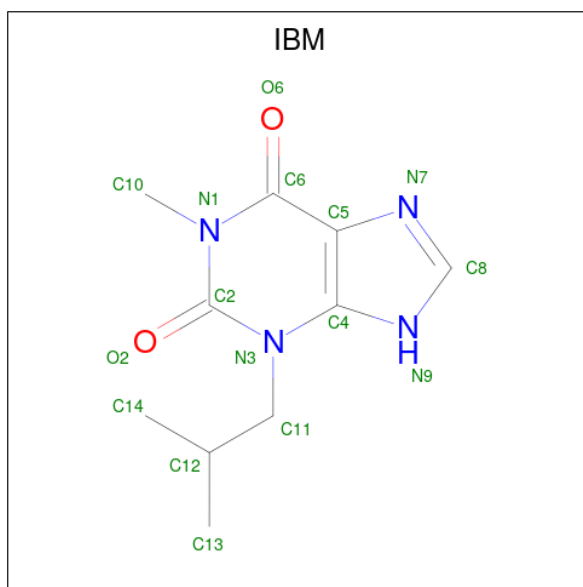
- Molecule 2 is ZINC ION (CCD ID: ZN) (formula: Zn).

Mol	Chain	Residues	Atoms		ZeroOcc	AltConf
2	A	1	Total	Zn	0	0
			1	1		
2	B	1	Total	Zn	0	0
			1	1		

- Molecule 3 is MAGNESIUM ION (CCD ID: MG) (formula: Mg).

Mol	Chain	Residues	Atoms	ZeroOcc	AltConf
3	A	1	Total Mg 1 1	0	0
3	B	1	Total Mg 1 1	0	0

- Molecule 4 is 3-ISOBUTYL-1-METHYLXANTHINE (CCD ID: IBM) (formula: C₁₀H₁₄N₄O₂).



Mol	Chain	Residues	Atoms	ZeroOcc	AltConf
4	A	1	Total C N O 16 10 4 2	0	0
4	B	1	Total C N O 16 10 4 2	0	0

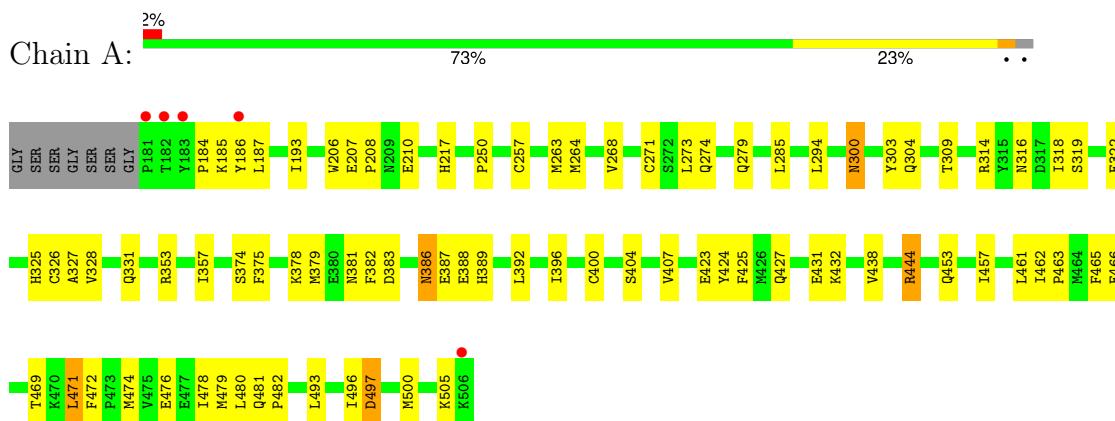
- Molecule 5 is water.

Mol	Chain	Residues	Atoms	ZeroOcc	AltConf
5	A	35	Total O 35 35	0	0
5	B	70	Total O 70 70	0	0

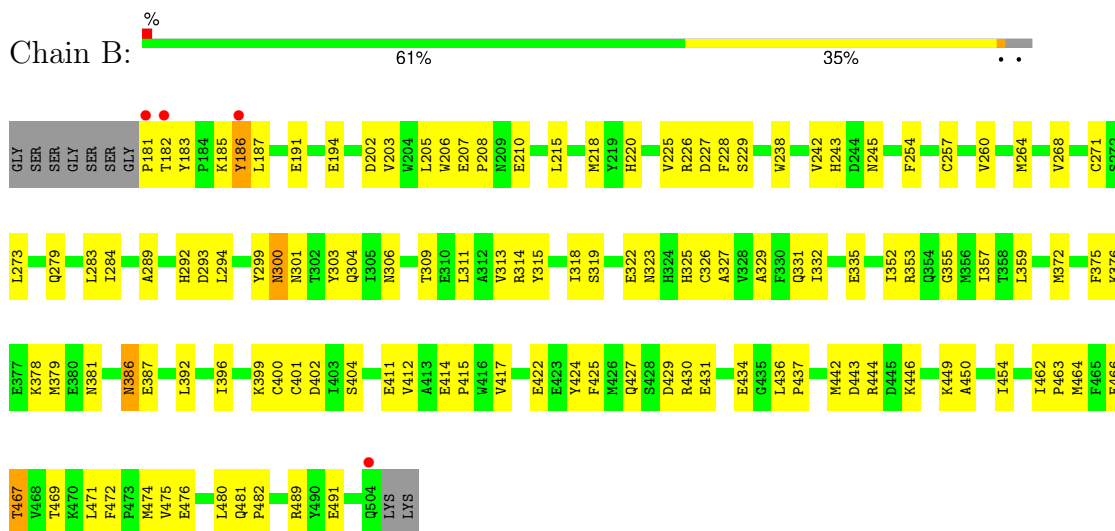
3 Residue-property plots [i](#)

These plots are drawn for all protein, RNA, DNA and oligosaccharide chains in the entry. The first graphic for a chain summarises the proportions of the various outlier classes displayed in the second graphic. The second graphic shows the sequence view annotated by issues in geometry and electron density. Residues are color-coded according to the number of geometric quality criteria for which they contain at least one outlier: green = 0, yellow = 1, orange = 2 and red = 3 or more. A red dot above a residue indicates a poor fit to the electron density ($RSRZ > 2$). Stretches of 2 or more consecutive residues without any outlier are shown as a green connector. Residues present in the sample, but not in the model, are shown in grey.

- Molecule 1: High-affinity cGMP-specific 3',5'-cyclic phosphodiesterase 9A



- Molecule 1: High-affinity cGMP-specific 3',5'-cyclic phosphodiesterase 9A



4 Data and refinement statistics i

Property	Value	Source
Space group	P 41 21 2	Depositor
Cell constants a, b, c, α , β , γ	104.27Å 104.27Å 269.61Å 90.00° 90.00° 90.00°	Depositor
Resolution (Å)	45.95 – 2.80 45.95 – 2.80	Depositor EDS
% Data completeness (in resolution range)	98.9 (45.95-2.80) 99.0 (45.95-2.80)	Depositor EDS
R_{merge}	(Not available)	Depositor
R_{sym}	0.11	Depositor
$\langle I/\sigma(I) \rangle$	-	Xtrriage
Refinement program	CNS 1.1	Depositor
R, R_{free}	0.206 , 0.240 0.203 , 0.199	Depositor DCC
R_{free} test set	1857 reflections (5.01%)	wwPDB-VP
Wilson B-factor (Å ²)	(Not available)	Xtrriage
Anisotropy	(Not available)	Xtrriage
Bulk solvent k_{sol} (e/Å ³), B_{sol} (Å ²)	0.33 , 32.1	EDS
L-test for twinning ¹	$\langle L \rangle =$ (Not available), $\langle L^2 \rangle =$ (Not available)	Xtrriage
Estimated twinning fraction	No twinning to report.	Xtrriage
F_o, F_c correlation	0.93	EDS
Total number of atoms	5512	wwPDB-VP
Average B, all atoms (Å ²)	41.0	wwPDB-VP

Xtrriage's analysis on translational NCS is as follows: *(Not available)*

¹Theoretical values of $\langle |L| \rangle$, $\langle L^2 \rangle$ for acentric reflections are 0.5, 0.333 respectively for untwinned datasets, and 0.375, 0.2 for perfectly twinned datasets.

5 Model quality

5.1 Standard geometry

Bond lengths and bond angles in the following residue types are not validated in this section: MG, IBM, ZN

The Z score for a bond length (or angle) is the number of standard deviations the observed value is removed from the expected value. A bond length (or angle) with $|Z| > 5$ is considered an outlier worth inspection. RMSZ is the root-mean-square of all Z scores of the bond lengths (or angles).

Mol	Chain	Bond lengths		Bond angles	
		RMSZ	# Z >5	RMSZ	# Z >5
1	A	0.37	0/2765	0.58	0/3743
1	B	0.36	0/2746	0.58	0/3721
All	All	0.36	0/5511	0.58	0/7464

There are no bond length outliers.

There are no bond angle outliers.

There are no chirality outliers.

There are no planarity outliers.

5.2 Too-close contacts

In the following table, the Non-H and H(model) columns list the number of non-hydrogen atoms and hydrogen atoms in the chain respectively. The H(added) column lists the number of hydrogen atoms added and optimized by MolProbity. The Clashes column lists the number of clashes within the asymmetric unit, whereas Symm-Clashes lists symmetry-related clashes.

Mol	Chain	Non-H	H(model)	H(added)	Clashes	Symm-Clashes
1	A	2695	0	2640	60	0
1	B	2676	0	2614	91	0
2	A	1	0	0	0	0
2	B	1	0	0	0	0
3	A	1	0	0	0	0
3	B	1	0	0	0	0
4	A	16	0	14	1	0
4	B	16	0	14	0	0
5	A	35	0	0	0	0
5	B	70	0	0	3	0
All	All	5512	0	5282	149	0

The all-atom clashscore is defined as the number of clashes found per 1000 atoms (including hydrogen atoms). The all-atom clashscore for this structure is 14.

All (149) close contacts within the same asymmetric unit are listed below, sorted by their clash magnitude.

Atom-1	Atom-2	Interatomic distance (Å)	Clash overlap (Å)
1:A:184:PRO:HG2	1:A:187:LEU:HD23	1.55	0.89
1:B:386:ASN:HD22	1:B:387:GLU:N	1.72	0.87
1:B:417:VAL:HG11	1:B:449:LYS:HG3	1.65	0.77
1:B:268:VAL:HA	1:B:273:LEU:HD12	1.70	0.74
1:A:432:LYS:HG3	1:A:438:VAL:HG21	1.72	0.72
1:A:378:LYS:HG3	1:A:392:LEU:HD12	1.72	0.70
1:A:327:ALA:O	1:A:331:GLN:HG3	1.91	0.70
1:A:386:ASN:HD22	1:A:387:GLU:N	1.91	0.69
1:B:271:CYS:HB3	1:B:472:PHE:CD2	2.27	0.68
1:B:327:ALA:O	1:B:331:GLN:HG3	1.95	0.66
1:B:386:ASN:HD22	1:B:386:ASN:C	1.98	0.66
1:B:429:ASP:OD2	1:B:444:ARG:NH1	2.29	0.66
1:B:183:TYR:HB3	1:B:187:LEU:HD12	1.78	0.65
1:B:181:PRO:HG2	1:B:182:THR:H	1.61	0.65
1:A:379:MET:HA	1:A:379:MET:HE2	1.80	0.64
1:B:399:LYS:HE2	5:B:1133:HOH:O	1.97	0.63
1:B:301:ASN:HB2	5:B:1123:HOH:O	1.98	0.62
1:A:383:ASP:H	1:A:389:HIS:CD2	2.18	0.62
1:B:379:MET:SD	1:B:471:LEU:HD13	2.40	0.62
1:B:283:LEU:HD23	1:B:352:ILE:HD13	1.82	0.61
1:A:379:MET:SD	1:A:471:LEU:HD13	2.41	0.60
1:A:400:CYS:O	1:A:404:SER:HB3	2.01	0.60
1:A:300:ASN:ND2	1:A:303:TYR:H	2.00	0.60
1:A:469:THR:HG21	1:A:476:GLU:HB2	1.83	0.60
1:A:424:TYR:OH	4:A:1103:IBM:H143	2.01	0.60
1:A:207:GLU:HB3	1:A:208:PRO:HD2	1.83	0.60
1:A:386:ASN:HD22	1:A:386:ASN:C	2.05	0.60
1:A:493:LEU:O	1:A:497:ASP:HB2	2.01	0.60
1:B:399:LYS:HB3	1:B:399:LYS:NZ	2.17	0.59
1:A:300:ASN:O	1:A:304:GLN:HG2	2.03	0.59
1:A:496:ILE:O	1:A:500:MET:HG2	2.01	0.59
1:B:427:GLN:O	1:B:431:GLU:HG3	2.03	0.59
1:B:309:THR:O	1:B:313:VAL:HG23	2.03	0.58
1:A:274:GLN:NE2	1:A:279:GLN:HE22	2.01	0.58
1:B:462:ILE:HB	1:B:463:PRO:HD3	1.86	0.57
1:A:316:ASN:HB3	1:B:357:ILE:HD13	1.86	0.57
1:A:425:PHE:CE1	1:A:444:ARG:HA	2.40	0.57

Continued on next page...

Continued from previous page...

Atom-1	Atom-2	Interatomic distance (Å)	Clash overlap (Å)
1:A:300:ASN:C	1:A:300:ASN:HD22	2.06	0.56
1:A:184:PRO:HB2	1:A:186:TYR:CE2	2.39	0.56
1:B:462:ILE:O	1:B:466:GLU:HB2	2.06	0.56
1:B:207:GLU:HB3	1:B:208:PRO:HD2	1.87	0.56
1:A:206:TRP:HE3	1:A:210:GLU:OE1	1.88	0.55
1:A:374:SER:HB3	1:A:392:LEU:HD11	1.89	0.55
1:B:254:PHE:O	1:B:257:CYS:HB3	2.06	0.55
1:A:383:ASP:H	1:A:389:HIS:HD2	1.52	0.54
1:B:220:HIS:CE1	1:B:225:VAL:HG11	2.44	0.53
1:B:326:CYS:SG	1:B:357:ILE:HG12	2.49	0.53
1:B:284:ILE:HD13	1:B:355:GLY:HA3	1.89	0.52
1:B:400:CYS:HA	1:B:464:MET:HE1	1.90	0.52
1:B:463:PRO:O	1:B:467:THR:HG22	2.09	0.52
1:A:263:MET:HG2	1:A:404:SER:OG	2.09	0.52
1:B:260:VAL:HG22	1:B:402:ASP:HA	1.91	0.52
1:B:300:ASN:HD22	1:B:300:ASN:C	2.13	0.52
1:A:471:LEU:HB3	1:A:472:PHE:CD1	2.45	0.52
1:A:193:ILE:HG23	1:A:217:HIS:NE2	2.24	0.52
1:A:322:GLU:HA	1:A:325:HIS:CD2	2.45	0.51
1:B:226:ARG:HD3	5:B:1113:HOH:O	2.09	0.51
1:A:453:GLN:O	1:A:457:ILE:HG13	2.10	0.51
1:A:462:ILE:O	1:A:466:GLU:HG3	2.11	0.51
1:B:306:ASN:ND2	1:B:437:PRO:HG2	2.27	0.50
1:A:318:ILE:O	1:A:319:SER:C	2.49	0.50
1:B:414:GLU:N	1:B:415:PRO:HD2	2.26	0.50
1:B:268:VAL:HA	1:B:273:LEU:CD1	2.41	0.49
1:B:400:CYS:HA	1:B:464:MET:CE	2.43	0.48
1:B:425:PHE:CE1	1:B:444:ARG:HA	2.49	0.48
1:B:476:GLU:HA	1:B:480:LEU:HB2	1.95	0.48
1:B:379:MET:SD	1:B:471:LEU:CD1	3.01	0.48
1:B:399:LYS:HB3	1:B:399:LYS:HZ2	1.77	0.48
1:A:481:GLN:HB3	1:A:482:PRO:CD	2.43	0.48
1:B:227:ASP:OD2	1:B:279:GLN:HG3	2.14	0.48
1:B:245:ASN:ND2	1:B:332:ILE:HD11	2.29	0.48
1:B:322:GLU:H	1:B:322:GLU:CD	2.17	0.48
1:B:300:ASN:OD1	1:B:442:MET:HE1	2.14	0.47
1:B:182:THR:O	1:B:182:THR:HG23	2.13	0.47
1:A:375:PHE:O	1:A:379:MET:HB2	2.14	0.47
1:B:238:TRP:O	1:B:242:VAL:HG23	2.15	0.47
1:B:450:ALA:O	1:B:454:ILE:HG13	2.14	0.47
1:B:417:VAL:CG1	1:B:449:LYS:HG3	2.42	0.47

Continued on next page...

Continued from previous page...

Atom-1	Atom-2	Interatomic distance (Å)	Clash overlap (Å)
1:B:185:LYS:C	1:B:187:LEU:H	2.19	0.47
1:A:457:ILE:HA	1:A:461:LEU:HB2	1.96	0.46
1:B:400:CYS:O	1:B:404:SER:HB3	2.15	0.46
1:B:378:LYS:HG3	1:B:392:LEU:HD12	1.98	0.46
1:A:250:PRO:HG2	1:A:423:GLU:HB2	1.97	0.46
1:A:264:MET:HE3	1:A:285:LEU:HB3	1.98	0.46
1:A:462:ILE:HB	1:A:463:PRO:HD3	1.98	0.46
1:B:202:ASP:CG	1:B:205:LEU:HG	2.36	0.46
1:B:355:GLY:O	1:B:359:LEU:HG	2.15	0.46
1:B:335:GLU:HA	1:B:335:GLU:OE2	2.16	0.45
1:B:375:PHE:CD2	1:B:396:ILE:HG13	2.51	0.45
1:B:318:ILE:O	1:B:319:SER:C	2.53	0.45
1:B:206:TRP:HB3	1:B:210:GLU:HB2	1.99	0.45
1:B:326:CYS:SG	1:B:357:ILE:HA	2.56	0.45
1:B:353:ARG:HH11	1:B:353:ARG:HG3	1.81	0.45
1:A:386:ASN:C	1:A:386:ASN:ND2	2.68	0.45
1:A:353:ARG:O	1:A:357:ILE:HG13	2.16	0.45
1:B:228:PHE:O	1:B:229:SER:HB2	2.17	0.44
1:B:264:MET:HA	1:B:401:CYS:SG	2.57	0.44
1:B:375:PHE:CG	1:B:396:ILE:HG13	2.52	0.44
1:B:443:ASP:OD2	1:B:446:LYS:HE3	2.17	0.44
1:B:300:ASN:ND2	1:B:303:TYR:H	2.16	0.44
1:B:386:ASN:C	1:B:386:ASN:ND2	2.68	0.44
1:B:304:GLN:NE2	1:B:309:THR:OG1	2.50	0.44
1:A:304:GLN:NE2	1:A:309:THR:OG1	2.51	0.44
1:A:478:ILE:HG22	1:A:478:ILE:O	2.18	0.44
1:B:203:VAL:HG22	1:B:412:VAL:CG1	2.47	0.43
1:B:372:MET:O	1:B:376:LYS:HG3	2.18	0.43
1:A:431:GLU:HB2	1:A:438:VAL:HG22	2.01	0.43
1:A:476:GLU:HA	1:A:480:LEU:HB2	2.00	0.43
1:B:215:LEU:O	1:B:218:MET:HB2	2.18	0.43
1:A:427:GLN:O	1:A:431:GLU:HG3	2.18	0.43
1:B:414:GLU:OE1	1:B:489:ARG:NH2	2.51	0.43
1:A:326:CYS:SG	1:A:357:ILE:HA	2.59	0.43
1:A:206:TRP:CE3	1:A:210:GLU:OE1	2.70	0.42
1:A:382:PHE:HA	1:A:389:HIS:HD2	1.83	0.42
1:A:375:PHE:CG	1:A:396:ILE:HG13	2.54	0.42
1:B:245:ASN:HD22	1:B:332:ILE:CD1	2.32	0.42
1:B:191:GLU:CD	1:B:191:GLU:N	2.72	0.42
1:B:315:TYR:CE1	1:B:323:ASN:HB3	2.55	0.42
1:A:185:LYS:C	1:A:187:LEU:H	2.22	0.42

Continued on next page...

Continued from previous page...

Atom-1	Atom-2	Interatomic distance (Å)	Clash overlap (Å)
1:B:300:ASN:C	1:B:300:ASN:ND2	2.72	0.42
1:A:379:MET:HA	1:A:379:MET:CE	2.48	0.42
1:A:386:ASN:ND2	1:A:388:GLU:H	2.17	0.42
1:B:181:PRO:CG	1:B:182:THR:H	2.30	0.42
1:B:299:TYR:HD2	1:B:427:GLN:HG3	1.85	0.42
1:A:407:VAL:HG11	1:A:479:MET:CE	2.50	0.42
1:A:465:PHE:HB3	1:A:480:LEU:HD13	2.01	0.42
1:B:322:GLU:HA	1:B:325:HIS:CD2	2.55	0.42
1:B:489:ARG:HG2	1:B:489:ARG:NH1	2.35	0.42
1:B:430:ARG:O	1:B:434:GLU:HG3	2.20	0.41
1:B:424:TYR:HB3	1:B:442:MET:HG2	2.02	0.41
1:A:268:VAL:HG22	1:A:273:LEU:HD12	2.02	0.41
1:B:469:THR:HG21	1:B:476:GLU:HB2	2.01	0.41
1:A:294:LEU:HD13	1:A:328:VAL:HG12	2.03	0.41
1:B:292:HIS:NE2	1:B:293:ASP:OD2	2.53	0.41
1:B:411:GLU:OE1	1:B:411:GLU:N	2.52	0.41
1:B:481:GLN:N	1:B:482:PRO:HD2	2.36	0.41
1:B:260:VAL:HG12	1:B:289:ALA:HB1	2.03	0.41
1:B:294:LEU:CD1	1:B:329:ALA:HA	2.50	0.41
1:B:306:ASN:HB3	1:B:436:LEU:HD22	2.03	0.41
1:B:472:PHE:O	1:B:475:VAL:HG23	2.21	0.41
1:B:283:LEU:HD23	1:B:352:ILE:CD1	2.50	0.40
1:A:300:ASN:ND2	1:A:300:ASN:C	2.71	0.40
1:A:314:ARG:HD3	1:B:314:ARG:HD3	2.04	0.40
1:B:191:GLU:O	1:B:194:GLU:HB3	2.21	0.40
1:B:300:ASN:ND2	1:B:427:GLN:HE22	2.19	0.40
1:B:375:PHE:CZ	1:B:379:MET:HE3	2.57	0.40
1:A:271:CYS:HB3	1:A:472:PHE:CD2	2.56	0.40
1:A:274:GLN:HE21	1:A:279:GLN:HE22	1.66	0.40
1:B:311:LEU:HD23	1:B:311:LEU:HA	1.90	0.40

There are no symmetry-related clashes.

5.3 Torsion angles [i](#)

5.3.1 Protein backbone [i](#)

In the following table, the Percentiles column shows the percent Ramachandran outliers of the chain as a percentile score with respect to all X-ray entries followed by that with respect to entries of similar resolution.

The Analysed column shows the number of residues for which the backbone conformation was analysed, and the total number of residues.

Mol	Chain	Analysed	Favoured	Allowed	Outliers	Percentiles	
1	A	324/333 (97%)	297 (92%)	26 (8%)	1 (0%)	37	67
1	B	322/333 (97%)	297 (92%)	23 (7%)	2 (1%)	22	51
All	All	646/666 (97%)	594 (92%)	49 (8%)	3 (0%)	25	56

All (3) Ramachandran outliers are listed below:

Mol	Chain	Res	Type
1	A	505	LYS
1	B	186	TYR
1	B	381	ASN

5.3.2 Protein sidechains [i](#)

In the following table, the Percentiles column shows the percent sidechain outliers of the chain as a percentile score with respect to all X-ray entries followed by that with respect to entries of similar resolution.

The Analysed column shows the number of residues for which the sidechain conformation was analysed, and the total number of residues.

Mol	Chain	Analysed	Rotameric	Outliers	Percentiles	
1	A	303/307 (99%)	295 (97%)	8 (3%)	41	75
1	B	301/307 (98%)	293 (97%)	8 (3%)	40	74
All	All	604/614 (98%)	588 (97%)	16 (3%)	41	75

All (16) residues with a non-rotameric sidechain are listed below:

Mol	Chain	Res	Type
1	A	257	CYS
1	A	300	ASN
1	A	381	ASN
1	A	386	ASN
1	A	444	ARG
1	A	471	LEU
1	A	474	MET
1	A	497	ASP
1	B	186	TYR
1	B	243	HIS

Continued on next page...

Continued from previous page...

Mol	Chain	Res	Type
1	B	300	ASN
1	B	386	ASN
1	B	422	GLU
1	B	467	THR
1	B	474	MET
1	B	491	GLU

Sometimes sidechains can be flipped to improve hydrogen bonding and reduce clashes. All (15) such sidechains are listed below:

Mol	Chain	Res	Type
1	A	274	GLN
1	A	279	GLN
1	A	300	ASN
1	A	304	GLN
1	A	381	ASN
1	A	386	ASN
1	A	389	HIS
1	A	453	GLN
1	B	245	ASN
1	B	300	ASN
1	B	304	GLN
1	B	351	GLN
1	B	381	ASN
1	B	386	ASN
1	B	389	HIS

5.3.3 RNA [i](#)

There are no RNA molecules in this entry.

5.4 Non-standard residues in protein, DNA, RNA chains [i](#)

There are no non-standard protein/DNA/RNA residues in this entry.

5.5 Carbohydrates [i](#)

There are no oligosaccharides in this entry.

5.6 Ligand geometry

Of 6 ligands modelled in this entry, 4 are monoatomic - leaving 2 for Mogul analysis.

In the following table, the Counts columns list the number of bonds (or angles) for which Mogul statistics could be retrieved, the number of bonds (or angles) that are observed in the model and the number of bonds (or angles) that are defined in the Chemical Component Dictionary. The Link column lists molecule types, if any, to which the group is linked. The Z score for a bond length (or angle) is the number of standard deviations the observed value is removed from the expected value. A bond length (or angle) with $|Z| > 2$ is considered an outlier worth inspection. RMSZ is the root-mean-square of all Z scores of the bond lengths (or angles).

Mol	Type	Chain	Res	Link	Bond lengths			Bond angles		
					Counts	RMSZ	# Z > 2	Counts	RMSZ	# Z > 2
4	IBM	A	1103	-	8,17,17	2.06	2 (25%)	11,25,25	1.79	4 (36%)
4	IBM	B	1105	-	8,17,17	1.36	1 (12%)	11,25,25	1.27	2 (18%)

In the following table, the Chirals column lists the number of chiral outliers, the number of chiral centers analysed, the number of these observed in the model and the number defined in the Chemical Component Dictionary. Similar counts are reported in the Torsion and Rings columns. '-' means no outliers of that kind were identified.

Mol	Type	Chain	Res	Link	Chirals	Torsions	Rings
4	IBM	A	1103	-	-	2/4/4/4	0/2/2/2
4	IBM	B	1105	-	-	0/4/4/4	0/2/2/2

All (3) bond length outliers are listed below:

Mol	Chain	Res	Type	Atoms	Z	Observed(Å)	Ideal(Å)
4	A	1103	IBM	C5-C6	4.45	1.48	1.41
4	B	1105	IBM	C5-C6	3.35	1.46	1.41
4	A	1103	IBM	C11-N3	2.74	1.51	1.48

All (6) bond angle outliers are listed below:

Mol	Chain	Res	Type	Atoms	Z	Observed(°)	Ideal(°)
4	A	1103	IBM	C12-C11-N3	3.46	117.27	112.66
4	A	1103	IBM	C11-N3-C4	-2.80	116.09	118.46
4	B	1105	IBM	C5-C4-N9	-2.54	105.66	110.87
4	A	1103	IBM	C5-C4-N9	-2.47	105.79	110.87
4	B	1105	IBM	C4-C5-C6	-2.19	118.28	119.96
4	A	1103	IBM	C4-C5-C6	-2.18	118.30	119.96

There are no chirality outliers.

All (2) torsion outliers are listed below:

Mol	Chain	Res	Type	Atoms
4	A	1103	IBM	C12-C11-N3-C4
4	A	1103	IBM	C12-C11-N3-C2

There are no ring outliers.

1 monomer is involved in 1 short contact:

Mol	Chain	Res	Type	Clashes	Symm-Clashes
4	A	1103	IBM	1	0

5.7 Other polymers [i](#)

There are no such residues in this entry.

5.8 Polymer linkage issues [i](#)

There are no chain breaks in this entry.

6 Fit of model and data [i](#)

6.1 Protein, DNA and RNA chains [i](#)

In the following table, the column labelled ‘#RSRZ> 2’ contains the number (and percentage) of RSRZ outliers, followed by percent RSRZ outliers for the chain as percentile scores relative to all X-ray entries and entries of similar resolution. The OWAB column contains the minimum, median, 95th percentile and maximum values of the occupancy-weighted average B-factor per residue. The column labelled ‘Q< 0.9’ lists the number of (and percentage) of residues with an average occupancy less than 0.9.

Mol	Chain	Analysed	<RSRZ>	#RSRZ>2	OWAB(Å ²)	Q<0.9
1	A	326/333 (97%)	-0.61	5 (1%) 71 64	21, 39, 60, 99	0
1	B	324/333 (97%)	-0.61	4 (1%) 76 69	21, 41, 61, 98	0
All	All	650/666 (97%)	-0.61	9 (1%) 73 66	21, 40, 61, 99	0

All (9) RSRZ outliers are listed below:

Mol	Chain	Res	Type	RSRZ
1	B	181	PRO	5.9
1	B	182	THR	4.0
1	A	181	PRO	3.7
1	B	186	TYR	3.5
1	B	504	GLN	2.8
1	A	186	TYR	2.8
1	A	506	LYS	2.4
1	A	182	THR	2.2
1	A	183	TYR	2.1

6.2 Non-standard residues in protein, DNA, RNA chains [i](#)

There are no non-standard protein/DNA/RNA residues in this entry.

6.3 Carbohydrates [i](#)

There are no monosaccharides in this entry.

6.4 Ligands [i](#)

In the following table, the Atoms column lists the number of modelled atoms in the group and the number defined in the chemical component dictionary. The B-factors column lists the minimum,

median, 95th percentile and maximum values of B factors of atoms in the group. The column labelled 'Q< 0.9' lists the number of atoms with occupancy less than 0.9.

Mol	Type	Chain	Res	Atoms	RSCC	RSR	B-factors(\AA^2)	Q<0.9
4	IBM	A	1103	16/16	0.88	0.17	51,53,58,58	0
3	MG	A	1102	1/1	0.93	0.22	30,30,30,30	0
3	MG	B	1104	1/1	0.96	0.23	26,26,26,26	0
2	ZN	A	101	1/1	0.98	0.06	55,55,55,55	0
4	IBM	B	1105	16/16	0.98	0.07	32,33,35,37	0
2	ZN	B	103	1/1	0.99	0.07	59,59,59,59	0

6.5 Other polymers [i](#)

There are no such residues in this entry.