



# Full wwPDB X-ray Structure Validation Report ⓘ

Jun 12, 2024 – 02:26 PM EDT

PDB ID : 2YY7  
Title : Crystal structure of thermolabile L-threonine dehydrogenase from *Flavobacterium frigidimaris* KUC-1  
Authors : Yoneda, K.; Sakuraba, H.; Oikawa, T.; Muraoka, I.; Ohshima, T.  
Deposited on : 2007-04-27  
Resolution : 2.06 Å (reported)

This is a Full wwPDB X-ray Structure Validation Report for a publicly released PDB entry.

We welcome your comments at [validation@mail.wwpdb.org](mailto:validation@mail.wwpdb.org)

A user guide is available at

<https://www.wwpdb.org/validation/2017/XrayValidationReportHelp>

with specific help available everywhere you see the ⓘ symbol.

The types of validation reports are described at

<http://www.wwpdb.org/validation/2017/FAQs#types>.

---

The following versions of software and data (see [references ⓘ](#)) were used in the production of this report:

MolProbity : 4.02b-467  
Mogul : 2022.3.0, CSD as543be (2022)  
Xtriage (Phenix) : 1.20.1  
EDS : 2.36.2  
buster-report : 1.1.7 (2018)  
Percentile statistics : 20191225.v01 (using entries in the PDB archive December 25th 2019)  
Refmac : 5.8.0158  
CCP4 : 7.0.044 (Gargrove)  
Ideal geometry (proteins) : Engh & Huber (2001)  
Ideal geometry (DNA, RNA) : Parkinson et al. (1996)  
Validation Pipeline (wwPDB-VP) : 2.36.2

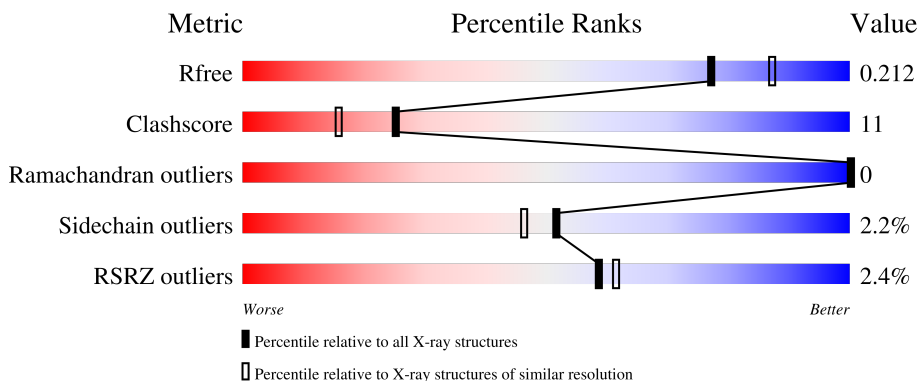
# 1 Overall quality at a glance

The following experimental techniques were used to determine the structure:

*X-RAY DIFFRACTION*


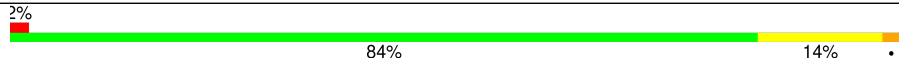
The reported resolution of this entry is 2.06 Å.

Percentile scores (ranging between 0-100) for global validation metrics of the entry are shown in the following graphic. The table shows the number of entries on which the scores are based.



Metric	Whole archive (#Entries)	Similar resolution (#Entries, resolution range(Å))
$R_{free}$	130704	2684 (2.08-2.04)
Clashscore	141614	2801 (2.08-2.04)
Ramachandran outliers	138981	2768 (2.08-2.04)
Sidechain outliers	138945	2768 (2.08-2.04)
RSRZ outliers	127900	2646 (2.08-2.04)

The table below summarises the geometric issues observed across the polymeric chains and their fit to the electron density. The red, orange, yellow and green segments of the lower bar indicate the fraction of residues that contain outliers for  $\geq 3$ , 2, 1 and 0 types of geometric quality criteria respectively. A grey segment represents the fraction of residues that are not modelled. The numeric value for each fraction is indicated below the corresponding segment, with a dot representing fractions  $\leq 5\%$ . The upper red bar (where present) indicates the fraction of residues that have poor fit to the electron density. The numeric value is given above the bar.

Mol	Chain	Length	Quality of chain
1	A	312	 3% 81% 17%
1	B	312	 2% 84% 14%

## 2 Entry composition [i](#)

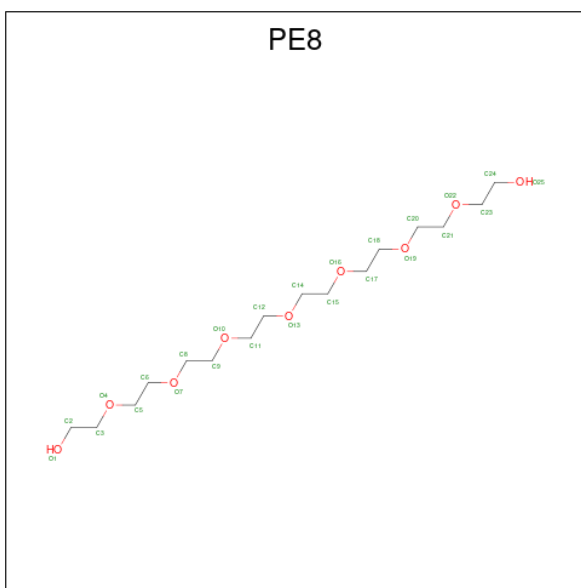
There are 6 unique types of molecules in this entry. The entry contains 5586 atoms, of which 0 are hydrogens and 0 are deuteriums.

In the tables below, the ZeroOcc column contains the number of atoms modelled with zero occupancy, the AltConf column contains the number of residues with at least one atom in alternate conformation and the Trace column contains the number of residues modelled with at most 2 atoms.

- Molecule 1 is a protein called L-threonine dehydrogenase.

Mol	Chain	Residues	Atoms					ZeroOcc	AltConf	Trace
			Total	C	N	O	S			
1	A	312	Total 2492	C 1602	N 403	O 472	S 15	0	0	0
1	B	312	Total 2492	C 1602	N 403	O 472	S 15	0	0	0

- Molecule 2 is 3,6,9,12,15,18,21-HEPTAOXATRICOSANE-1,23-DIOL (three-letter code: PE8) (formula:  $C_{16}H_{34}O_9$ ).



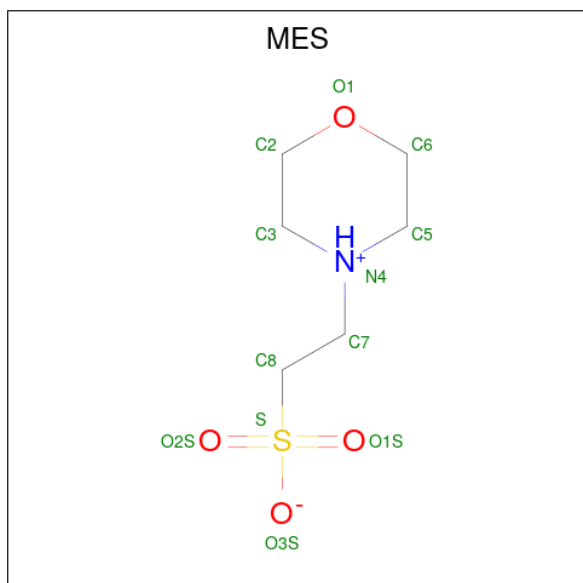
Mol	Chain	Residues	Atoms			ZeroOcc	AltConf
			Total	C	O		
2	A	1	Total 25	C 16	O 9	0	0
2	A	1	Total 25	C 16	O 9	0	0
2	B	1	Total 25	C 16	O 9	0	0
2	B	1	Total 25	C 16	O 9	0	0

- Molecule 3 is NICOTINAMIDE-ADENINE-DINUCLEOTIDE (three-letter code: NAD) (formula:  $C_{21}H_{27}N_7O_{14}P_2$ ).



Mol	Chain	Residues	Atoms				ZeroOcc	AltConf	
			Total	C	N	O			P
3	A	1	44	21	7	14	2	0	0
3	B	1	44	21	7	14	2	0	0

- Molecule 4 is 2-(N-MORPHOLINO)-ETHANESULFONIC ACID (three-letter code: MES) (formula:  $C_6H_{13}NO_4S$ ).



Mol	Chain	Residues	Atoms					ZeroOcc	AltConf
4	A	1	Total	C	N	O	S	0	0
			12	6	1	4	1		
4	B	1	Total	C	N	O	S	0	0
			12	6	1	4	1		

- Molecule 5 is GLYCEROL (three-letter code: GOL) (formula: C<sub>3</sub>H<sub>8</sub>O<sub>3</sub>).



Mol	Chain	Residues	Atoms			ZeroOcc	AltConf
5	A	1	Total	C	O	0	0
			6	3	3		
5	B	1	Total	C	O	0	0
			6	3	3		

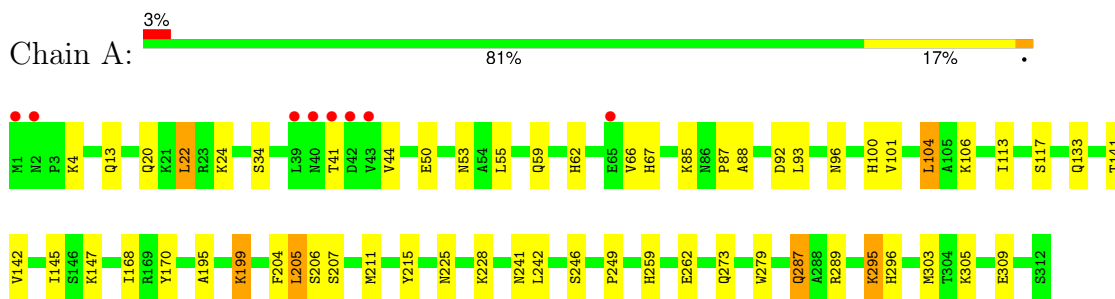
- Molecule 6 is water.

Mol	Chain	Residues	Atoms		ZeroOcc	AltConf
6	A	193	Total	O	0	0
			193	193		
6	B	185	Total	O	0	0
			185	185		

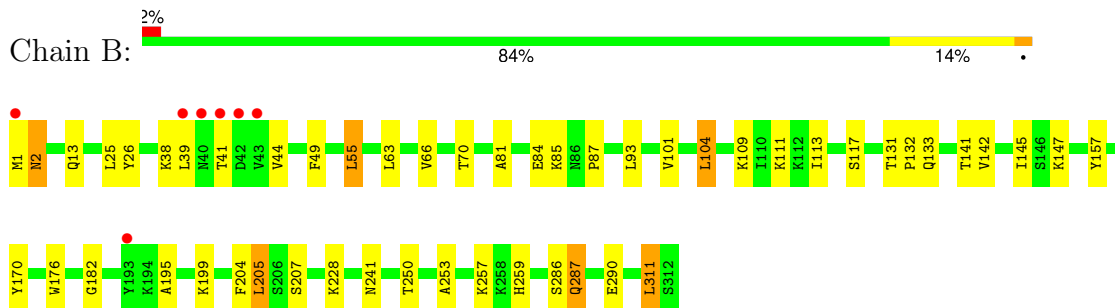
### 3 Residue-property plots [i](#)

These plots are drawn for all protein, RNA, DNA and oligosaccharide chains in the entry. The first graphic for a chain summarises the proportions of the various outlier classes displayed in the second graphic. The second graphic shows the sequence view annotated by issues in geometry and electron density. Residues are color-coded according to the number of geometric quality criteria for which they contain at least one outlier: green = 0, yellow = 1, orange = 2 and red = 3 or more. A red dot above a residue indicates a poor fit to the electron density ( $RSRZ > 2$ ). Stretches of 2 or more consecutive residues without any outlier are shown as a green connector. Residues present in the sample, but not in the model, are shown in grey.

- Molecule 1: L-threonine dehydrogenase



- Molecule 1: L-threonine dehydrogenase



## 4 Data and refinement statistics

Property	Value	Source
Space group	P 21 21 21	Depositor
Cell constants a, b, c, $\alpha$ , $\beta$ , $\gamma$	61.03Å 88.14Å 123.94Å 90.00° 90.00° 90.00°	Depositor
Resolution (Å)	46.47 – 2.06 46.51 – 2.00	Depositor EDS
% Data completeness (in resolution range)	(Not available) (46.47-2.06) 96.7 (46.51-2.00)	Depositor EDS
$R_{merge}$	(Not available)	Depositor
$R_{sym}$	(Not available)	Depositor
$\langle I/\sigma(I) \rangle$ <sup>1</sup>	5.38 (at 2.00Å)	Xtrriage
Refinement program	CNS 1.1	Depositor
R, $R_{free}$	0.195 , 0.203 0.196 , 0.212	Depositor DCC
$R_{free}$ test set	4483 reflections (10.10%)	wwPDB-VP
Wilson B-factor (Å <sup>2</sup> )	15.7	Xtrriage
Anisotropy	0.118	Xtrriage
Bulk solvent $k_{sol}$ (e/Å <sup>3</sup> ), $B_{sol}$ (Å <sup>2</sup> )	0.37 , 53.0	EDS
L-test for twinning <sup>2</sup>	$\langle  L  \rangle = 0.50$ , $\langle L^2 \rangle = 0.34$	Xtrriage
Estimated twinning fraction	No twinning to report.	Xtrriage
$F_o, F_c$ correlation	0.95	EDS
Total number of atoms	5586	wwPDB-VP
Average B, all atoms (Å <sup>2</sup> )	16.0	wwPDB-VP

Xtrriage's analysis on translational NCS is as follows: *The analyses of the Patterson function reveals a significant off-origin peak that is 49.34 % of the origin peak, indicating pseudo-translational symmetry. The chance of finding a peak of this or larger height randomly in a structure without pseudo-translational symmetry is equal to 7.5635e-05. The detected translational NCS is most likely also responsible for the elevated intensity ratio.*

<sup>1</sup>Intensities estimated from amplitudes.

<sup>2</sup>Theoretical values of  $\langle |L| \rangle$ ,  $\langle L^2 \rangle$  for acentric reflections are 0.5, 0.333 respectively for untwinned datasets, and 0.375, 0.2 for perfectly twinned datasets.

## 5 Model quality

### 5.1 Standard geometry

Bond lengths and bond angles in the following residue types are not validated in this section: GOL, PE8, MES, NAD

The Z score for a bond length (or angle) is the number of standard deviations the observed value is removed from the expected value. A bond length (or angle) with  $|Z| > 5$  is considered an outlier worth inspection. RMSZ is the root-mean-square of all Z scores of the bond lengths (or angles).

Mol	Chain	Bond lengths		Bond angles	
		RMSZ	# Z  >5	RMSZ	# Z  >5
1	A	0.32	0/2556	0.59	0/3470
1	B	0.32	0/2556	0.59	0/3470
All	All	0.32	0/5112	0.59	0/6940

There are no bond length outliers.

There are no bond angle outliers.

There are no chirality outliers.

There are no planarity outliers.

### 5.2 Too-close contacts

In the following table, the Non-H and H(model) columns list the number of non-hydrogen atoms and hydrogen atoms in the chain respectively. The H(added) column lists the number of hydrogen atoms added and optimized by MolProbity. The Clashes column lists the number of clashes within the asymmetric unit, whereas Symm-Clashes lists symmetry-related clashes.

Mol	Chain	Non-H	H(model)	H(added)	Clashes	Symm-Clashes
1	A	2492	0	2465	58	0
1	B	2492	0	2465	51	0
2	A	50	0	68	12	0
2	B	50	0	68	10	0
3	A	44	0	26	2	0
3	B	44	0	26	3	0
4	A	12	0	12	0	0
4	B	12	0	12	0	0
5	A	6	0	6	2	0
5	B	6	0	7	0	0
6	A	193	0	0	4	0

*Continued on next page...*



*Continued from previous page...*

Mol	Chain	Non-H	H(model)	H(added)	Clashes	Symm-Clashes
6	B	185	0	0	4	0
All	All	5586	0	5155	111	0

The all-atom clashscore is defined as the number of clashes found per 1000 atoms (including hydrogen atoms). The all-atom clashscore for this structure is 11.

All (111) close contacts within the same asymmetric unit are listed below, sorted by their clash magnitude.

Atom-1	Atom-2	Interatomic distance (Å)	Clash overlap (Å)
1:B:55:LEU:HD11	1:B:93:LEU:HA	1.43	1.01
1:A:85:LYS:HE2	2:A:2001:PE8:H141	1.38	1.01
2:A:2002:PE8:H201	1:B:87:PRO:HB2	1.51	0.93
1:A:106:LYS:NZ	2:A:2002:PE8:H21	1.92	0.85
1:A:133:GLN:HE22	1:A:241:ASN:H	1.26	0.84
1:A:85:LYS:HA	2:A:2001:PE8:H211	1.57	0.83
1:A:206:SER:H	1:A:273:GLN:HE22	1.23	0.81
1:B:287:GLN:HE21	1:B:287:GLN:H	1.26	0.81
1:A:106:LYS:HZ1	2:A:2002:PE8:H21	1.46	0.80
1:A:287:GLN:HE21	1:A:287:GLN:H	1.25	0.79
1:A:85:LYS:CE	2:A:2001:PE8:H141	2.13	0.76
1:A:206:SER:H	1:A:273:GLN:NE2	1.85	0.74
1:B:85:LYS:HZ3	2:B:2003:PE8:H92	1.53	0.74
1:B:133:GLN:HE22	1:B:241:ASN:H	1.34	0.73
2:A:2002:PE8:H231	6:A:4057:HOH:O	1.89	0.72
1:B:85:LYS:HE2	2:B:2003:PE8:H92	1.70	0.71
1:A:88:ALA:HA	2:B:2004:PE8:H111	1.73	0.70
1:A:289:ARG:HH22	1:A:296:HIS:HD2	1.38	0.70
1:B:55:LEU:HD13	1:B:93:LEU:HD12	1.72	0.69
1:B:55:LEU:CD1	1:B:93:LEU:HA	2.20	0.68
1:B:70:THR:HB	1:B:111:LYS:HE2	1.76	0.68
1:B:85:LYS:NZ	2:B:2003:PE8:H92	2.08	0.68
1:B:85:LYS:CE	2:B:2003:PE8:H92	2.24	0.68
1:B:85:LYS:HZ2	2:B:2003:PE8:H181	1.60	0.66
1:A:289:ARG:HH22	1:A:296:HIS:CD2	2.16	0.63
1:B:104:LEU:HD12	1:B:109:LYS:HD2	1.81	0.62
1:A:279:TRP:CH2	5:A:1001:GOL:H11	2.35	0.61
1:B:287:GLN:H	1:B:287:GLN:NE2	1.95	0.61
1:A:287:GLN:H	1:A:287:GLN:NE2	1.96	0.61
1:A:55:LEU:CD1	1:A:93:LEU:HA	2.31	0.60
1:A:41:THR:CG2	1:A:44:VAL:HG23	2.32	0.60
1:A:279:TRP:HH2	5:A:1001:GOL:H11	1.66	0.58

*Continued on next page...*

*Continued from previous page...*

Atom-1	Atom-2	Interatomic distance (Å)	Clash overlap (Å)
1:B:39:LEU:HD12	1:B:39:LEU:N	2.18	0.57
1:B:41:THR:CG2	1:B:44:VAL:HG23	2.34	0.57
1:B:38:LYS:HD3	1:B:44:VAL:HG11	1.86	0.57
1:A:62:HIS:O	1:A:66:VAL:HG22	2.05	0.56
1:A:295:LYS:O	1:A:295:LYS:HD2	2.05	0.56
1:B:41:THR:HG23	1:B:44:VAL:H	1.70	0.56
1:A:133:GLN:NE2	1:A:241:ASN:H	1.99	0.56
1:A:106:LYS:HZ3	2:A:2002:PE8:H21	1.70	0.54
1:A:295:LYS:HE3	1:A:295:LYS:H	1.73	0.53
1:B:85:LYS:NZ	2:B:2003:PE8:H181	2.23	0.53
1:B:85:LYS:HD2	2:B:2003:PE8:H182	1.91	0.53
1:A:106:LYS:HZ1	2:A:2002:PE8:C2	2.20	0.52
1:B:259:HIS:HE1	6:B:4120:HOH:O	1.92	0.52
1:A:20:GLN:HG2	6:A:4086:HOH:O	2.10	0.51
1:B:287:GLN:HE21	1:B:287:GLN:N	2.01	0.51
1:B:101:VAL:HG12	1:B:113:ILE:HD13	1.91	0.51
1:A:13:GLN:NE2	3:A:3001:NAD:H72N	2.09	0.50
1:A:287:GLN:HE21	1:A:287:GLN:N	2.01	0.50
1:A:55:LEU:HD11	1:A:93:LEU:HA	1.93	0.50
1:A:259:HIS:HE1	6:A:4065:HOH:O	1.95	0.50
1:B:13:GLN:NE2	3:B:3002:NAD:H72N	2.09	0.49
1:B:1:MET:HB2	6:B:4184:HOH:O	2.12	0.49
1:B:85:LYS:NZ	2:B:2003:PE8:H112	2.25	0.49
1:A:100:HIS:O	1:A:104:LEU:HD22	2.12	0.49
1:B:84:GLU:OE2	1:B:142:VAL:HG12	2.14	0.48
1:B:81:ALA:HB3	1:B:182:GLY:O	2.13	0.48
1:B:170:TYR:HB2	3:B:3002:NAD:C5N	2.44	0.48
1:A:206:SER:N	1:A:273:GLN:HE22	2.02	0.47
1:A:101:VAL:HG12	1:A:113:ILE:HD13	1.97	0.47
1:B:38:LYS:HD2	1:B:38:LYS:O	2.15	0.46
1:A:34:SER:HA	1:A:50:GLU:O	2.15	0.46
1:A:4:LYS:HG2	1:A:67:HIS:O	2.16	0.46
1:B:39:LEU:C	1:B:41:THR:H	2.19	0.46
1:A:141:THR:O	1:A:145:ILE:HG13	2.16	0.45
1:A:199:LYS:HG3	1:A:262:GLU:HG2	1.99	0.45
1:A:207:SER:O	1:A:249:PRO:HD2	2.17	0.44
1:B:207:SER:HB2	1:B:250:THR:OG1	2.17	0.44
1:A:24:LYS:NZ	1:A:24:LYS:HB3	2.33	0.44
1:B:287:GLN:NE2	1:B:287:GLN:N	2.65	0.44
1:A:53:ASN:OD1	1:A:55:LEU:HB2	2.18	0.43
1:A:92:ASP:OD1	1:A:96:ASN:ND2	2.47	0.43

*Continued on next page...*

*Continued from previous page...*

Atom-1	Atom-2	Interatomic distance (Å)	Clash overlap (Å)
1:B:25:LEU:HD13	1:B:228:LYS:NZ	2.32	0.43
1:A:225:ASN:HA	1:A:228:LYS:HG2	2.01	0.43
1:A:22:LEU:HD12	1:A:22:LEU:HA	1.91	0.43
1:B:157:TYR:OH	2:B:2004:PE8:H142	2.19	0.43
1:A:87:PRO:HB3	1:A:142:VAL:HG21	2.00	0.43
1:B:117:SER:HA	1:B:147:LYS:HD2	2.00	0.43
1:B:38:LYS:HG2	1:B:49:PHE:CE2	2.53	0.43
1:A:204:PHE:CD1	1:A:205:LEU:HD13	2.54	0.42
1:A:215:TYR:CD2	1:A:303:MET:HG3	2.54	0.42
1:B:101:VAL:HG12	1:B:113:ILE:CD1	2.49	0.42
1:A:211:MET:O	1:A:246:SER:HA	2.19	0.42
1:A:287:GLN:NE2	1:A:287:GLN:N	2.65	0.42
1:B:26:TYR:OH	1:B:228:LYS:HE2	2.20	0.42
1:B:41:THR:HG22	1:B:44:VAL:HG23	2.02	0.42
1:A:170:TYR:HB2	3:A:3001:NAD:C5N	2.50	0.42
1:B:176:TRP:HB2	1:B:311:LEU:CD1	2.50	0.42
1:A:117:SER:HA	1:A:147:LYS:HD2	2.02	0.42
1:B:117:SER:O	3:B:3002:NAD:H6N	2.20	0.42
1:B:253:ALA:O	1:B:257:LYS:HG3	2.19	0.42
1:A:195:ALA:O	1:A:199:LYS:HA	2.20	0.42
1:B:259:HIS:HD2	6:B:4148:HOH:O	2.02	0.42
1:B:286:SER:O	1:B:290:GLU:HG2	2.20	0.42
1:A:13:GLN:NE2	6:A:4008:HOH:O	2.53	0.41
1:B:63:LEU:HA	1:B:66:VAL:HG12	2.03	0.41
1:B:131:THR:HA	1:B:132:PRO:HD3	1.90	0.41
1:A:168:ILE:HD12	1:A:242:LEU:HD22	2.02	0.41
1:A:305:LYS:O	1:A:309:GLU:HG3	2.20	0.41
1:A:41:THR:HG23	1:A:44:VAL:H	1.85	0.41
2:A:2002:PE8:H242	6:B:4175:HOH:O	2.19	0.41
1:B:2:ASN:HD22	1:B:2:ASN:HA	1.56	0.41
1:A:53:ASN:H	1:A:59:GLN:NE2	2.18	0.41
1:B:204:PHE:CD1	1:B:205:LEU:HD13	2.56	0.41
1:A:101:VAL:HG12	1:A:113:ILE:CD1	2.51	0.41
1:A:106:LYS:NZ	2:A:2002:PE8:C2	2.71	0.41
1:A:85:LYS:HA	2:A:2001:PE8:C21	2.41	0.41
1:B:141:THR:O	1:B:145:ILE:HG13	2.21	0.40
1:A:4:LYS:HD2	1:A:4:LYS:HA	1.93	0.40
1:B:195:ALA:O	1:B:199:LYS:HA	2.20	0.40

There are no symmetry-related clashes.

## 5.3 Torsion angles [i](#)

### 5.3.1 Protein backbone [i](#)

In the following table, the Percentiles column shows the percent Ramachandran outliers of the chain as a percentile score with respect to all X-ray entries followed by that with respect to entries of similar resolution.

The Analysed column shows the number of residues for which the backbone conformation was analysed, and the total number of residues.

Mol	Chain	Analysed	Favoured	Allowed	Outliers	Percentiles	
1	A	310/312 (99%)	301 (97%)	9 (3%)	0	100	100
1	B	310/312 (99%)	301 (97%)	9 (3%)	0	100	100
All	All	620/624 (99%)	602 (97%)	18 (3%)	0	100	100

There are no Ramachandran outliers to report.

### 5.3.2 Protein sidechains [i](#)

In the following table, the Percentiles column shows the percent sidechain outliers of the chain as a percentile score with respect to all X-ray entries followed by that with respect to entries of similar resolution.

The Analysed column shows the number of residues for which the sidechain conformation was analysed, and the total number of residues.

Mol	Chain	Analysed	Rotameric	Outliers	Percentiles	
1	A	274/274 (100%)	268 (98%)	6 (2%)	52	46
1	B	274/274 (100%)	268 (98%)	6 (2%)	52	46
All	All	548/548 (100%)	536 (98%)	12 (2%)	52	46

All (12) residues with a non-rotameric sidechain are listed below:

Mol	Chain	Res	Type
1	A	22	LEU
1	A	104	LEU
1	A	199	LYS
1	A	205	LEU
1	A	287	GLN
1	A	295	LYS
1	B	2	ASN
1	B	55	LEU

*Continued on next page...*

*Continued from previous page...*

Mol	Chain	Res	Type
1	B	104	LEU
1	B	205	LEU
1	B	287	GLN
1	B	311	LEU

Sometimes sidechains can be flipped to improve hydrogen bonding and reduce clashes. All (19) such sidechains are listed below:

Mol	Chain	Res	Type
1	A	2	ASN
1	A	13	GLN
1	A	59	GLN
1	A	103	ASN
1	A	133	GLN
1	A	259	HIS
1	A	273	GLN
1	A	287	GLN
1	A	296	HIS
1	B	2	ASN
1	B	13	GLN
1	B	30	ASN
1	B	59	GLN
1	B	103	ASN
1	B	133	GLN
1	B	159	ASN
1	B	254	ASN
1	B	259	HIS
1	B	287	GLN

### 5.3.3 RNA [i](#)

There are no RNA molecules in this entry.

### 5.4 Non-standard residues in protein, DNA, RNA chains [i](#)

There are no non-standard protein/DNA/RNA residues in this entry.

### 5.5 Carbohydrates [i](#)

There are no monosaccharides in this entry.

## 5.6 Ligand geometry

10 ligands are modelled in this entry.

In the following table, the Counts columns list the number of bonds (or angles) for which Mogul statistics could be retrieved, the number of bonds (or angles) that are observed in the model and the number of bonds (or angles) that are defined in the Chemical Component Dictionary. The Link column lists molecule types, if any, to which the group is linked. The Z score for a bond length (or angle) is the number of standard deviations the observed value is removed from the expected value. A bond length (or angle) with  $|Z| > 2$  is considered an outlier worth inspection. RMSZ is the root-mean-square of all Z scores of the bond lengths (or angles).

Mol	Type	Chain	Res	Link	Bond lengths			Bond angles		
					Counts	RMSZ	# Z  > 2	Counts	RMSZ	# Z  > 2
2	PE8	B	2004	-	24,24,24	0.87	1 (4%)	23,23,23	1.02	1 (4%)
3	NAD	A	3001	-	42,48,48	1.89	7 (16%)	50,73,73	1.49	7 (14%)
3	NAD	B	3002	-	42,48,48	1.85	7 (16%)	50,73,73	1.55	6 (12%)
2	PE8	B	2003	-	24,24,24	0.61	0	23,23,23	0.84	0
5	GOL	A	1001	-	5,5,5	1.90	1 (20%)	5,5,5	1.51	0
4	MES	B	4002	-	12,12,12	2.22	4 (33%)	15,16,16	2.35	4 (26%)
4	MES	A	4001	-	12,12,12	2.24	4 (33%)	15,16,16	2.35	5 (33%)
5	GOL	B	1002	-	5,5,5	1.40	1 (20%)	5,5,5	1.11	0
2	PE8	A	2002	-	24,24,24	0.72	0	23,23,23	0.84	0
2	PE8	A	2001	-	24,24,24	0.71	0	23,23,23	0.92	1 (4%)

In the following table, the Chirals column lists the number of chiral outliers, the number of chiral centers analysed, the number of these observed in the model and the number defined in the Chemical Component Dictionary. Similar counts are reported in the Torsion and Rings columns. '-' means no outliers of that kind were identified.

Mol	Type	Chain	Res	Link	Chirals	Torsions	Rings
2	PE8	B	2004	-	-	7/22/22/22	-
3	NAD	A	3001	-	-	0/26/62/62	0/5/5/5
3	NAD	B	3002	-	-	3/26/62/62	0/5/5/5
2	PE8	B	2003	-	-	8/22/22/22	-
5	GOL	A	1001	-	-	0/4/4/4	-
4	MES	B	4002	-	-	2/6/14/14	0/1/1/1
4	MES	A	4001	-	-	1/6/14/14	0/1/1/1
5	GOL	B	1002	-	-	4/4/4/4	-
2	PE8	A	2002	-	-	10/22/22/22	-
2	PE8	A	2001	-	-	12/22/22/22	-

All (25) bond length outliers are listed below:

Mol	Chain	Res	Type	Atoms	Z	Observed(Å)	Ideal(Å)
3	A	3001	NAD	O7N-C7N	7.96	1.39	1.24
3	B	3002	NAD	O7N-C7N	7.96	1.39	1.24
4	A	4001	MES	C8-S	-5.92	1.69	1.77
4	B	4002	MES	C8-S	-5.30	1.70	1.77
3	A	3001	NAD	C2A-N3A	4.21	1.38	1.32
3	B	3002	NAD	PA-O3	3.73	1.63	1.59
3	B	3002	NAD	C2A-N3A	3.50	1.37	1.32
4	B	4002	MES	O3S-S	-3.25	1.34	1.47
3	B	3002	NAD	C2A-N1A	3.21	1.39	1.33
3	A	3001	NAD	C2N-N1N	3.18	1.38	1.35
4	A	4001	MES	O3S-S	-3.11	1.35	1.47
3	A	3001	NAD	O4D-C1D	3.04	1.44	1.40
5	A	1001	GOL	O1-C1	-3.03	1.29	1.42
3	A	3001	NAD	PN-O3	3.02	1.62	1.59
4	B	4002	MES	O2S-S	-2.99	1.36	1.45
3	A	3001	NAD	C2A-N1A	2.93	1.39	1.33
4	A	4001	MES	O2S-S	-2.68	1.37	1.45
3	B	3002	NAD	C2N-N1N	2.60	1.37	1.35
4	B	4002	MES	O1S-S	-2.46	1.38	1.45
3	B	3002	NAD	PN-O3	2.43	1.62	1.59
3	A	3001	NAD	C6N-N1N	2.23	1.40	1.35
2	B	2004	PE8	O10-C11	-2.20	1.32	1.42
4	A	4001	MES	O1S-S	-2.16	1.39	1.45
5	B	1002	GOL	O3-C3	-2.14	1.33	1.42
3	B	3002	NAD	C4N-C3N	2.02	1.42	1.39

All (24) bond angle outliers are listed below:

Mol	Chain	Res	Type	Atoms	Z	Observed(°)	Ideal(°)
3	B	3002	NAD	N3A-C2A-N1A	-6.65	119.64	128.67
4	B	4002	MES	C5-N4-C3	6.48	122.81	108.84
4	A	4001	MES	C5-N4-C3	6.01	121.78	108.84
3	A	3001	NAD	N3A-C2A-N1A	-5.88	120.70	128.67
3	B	3002	NAD	C3N-C7N-N7N	5.19	124.14	117.74
4	A	4001	MES	C7-N4-C5	3.89	121.60	111.24
3	A	3001	NAD	C3N-C7N-N7N	3.88	122.51	117.74
3	A	3001	NAD	O7N-C7N-C3N	-3.56	115.25	119.60
4	B	4002	MES	C7-N4-C3	3.25	119.90	111.24
4	B	4002	MES	O3S-S-C8	3.24	112.33	106.00
3	A	3001	NAD	O4B-C1B-N9A	2.96	112.68	108.75
4	A	4001	MES	O3S-S-O1S	2.82	118.46	111.40
4	A	4001	MES	C6-C5-N4	2.67	114.17	110.12

*Continued on next page...*

*Continued from previous page...*

Mol	Chain	Res	Type	Atoms	Z	Observed(°)	Ideal(°)
2	A	2001	PE8	O19-C20-C21	-2.64	98.33	110.35
3	A	3001	NAD	C4D-O4D-C1D	2.63	112.33	109.92
3	A	3001	NAD	C4B-O4B-C1B	-2.57	107.57	109.92
3	B	3002	NAD	C4A-C5A-N7A	-2.54	106.65	109.34
3	B	3002	NAD	O7N-C7N-N7N	-2.50	119.00	122.62
2	B	2004	PE8	O4-C3-C2	2.42	120.79	110.11
4	B	4002	MES	C7-N4-C5	2.27	117.29	111.24
3	B	3002	NAD	O7N-C7N-C3N	-2.25	116.85	119.60
3	A	3001	NAD	O2N-PN-O1N	2.23	122.83	112.44
3	B	3002	NAD	C5A-C6A-N6A	2.08	123.48	120.31
4	A	4001	MES	C7-N4-C3	2.01	116.59	111.24

There are no chirality outliers.

All (47) torsion outliers are listed below:

Mol	Chain	Res	Type	Atoms
3	B	3002	NAD	C5D-O5D-PN-O3
3	B	3002	NAD	C5D-O5D-PN-O1N
4	A	4001	MES	C8-C7-N4-C5
4	B	4002	MES	C8-C7-N4-C3
5	B	1002	GOL	O1-C1-C2-C3
2	A	2002	PE8	O19-C20-C21-O22
2	A	2001	PE8	O16-C17-C18-O19
2	B	2003	PE8	O10-C11-C12-O13
2	A	2002	PE8	O13-C14-C15-O16
2	A	2002	PE8	O7-C8-C9-O10
2	B	2004	PE8	O10-C11-C12-O13
2	A	2001	PE8	O10-C11-C12-O13
2	B	2004	PE8	O7-C8-C9-O10
2	A	2001	PE8	O22-C23-C24-O25
2	B	2003	PE8	O22-C23-C24-O25
5	B	1002	GOL	C1-C2-C3-O3
5	B	1002	GOL	O1-C1-C2-O2
5	B	1002	GOL	O2-C2-C3-O3
2	A	2001	PE8	O1-C2-C3-O4
2	A	2002	PE8	O4-C5-C6-O7
2	A	2002	PE8	O16-C17-C18-O19
2	A	2001	PE8	O7-C8-C9-O10
2	A	2001	PE8	O4-C5-C6-O7
2	A	2001	PE8	C24-C23-O22-C21
2	B	2004	PE8	C8-C9-O10-C11
2	A	2001	PE8	C11-C12-O13-C14

*Continued on next page...*



*Continued from previous page...*

Mol	Chain	Res	Type	Atoms
2	A	2002	PE8	C17-C18-O19-C20
2	B	2004	PE8	O19-C20-C21-O22
2	A	2001	PE8	C2-C3-O4-C5
2	B	2003	PE8	C18-C17-O16-C15
2	B	2003	PE8	C12-C11-O10-C9
2	A	2002	PE8	C6-C5-O4-C3
2	B	2003	PE8	C9-C8-O7-C6
2	B	2003	PE8	O1-C2-C3-O4
2	A	2002	PE8	C2-C3-O4-C5
2	B	2003	PE8	O7-C8-C9-O10
3	B	3002	NAD	C5D-O5D-PN-O2N
2	A	2001	PE8	C21-C20-O19-C18
2	A	2001	PE8	C18-C17-O16-C15
2	B	2004	PE8	O22-C23-C24-O25
2	B	2004	PE8	C2-C3-O4-C5
2	B	2003	PE8	C21-C20-O19-C18
2	A	2001	PE8	O19-C20-C21-O22
2	B	2004	PE8	C9-C8-O7-C6
4	B	4002	MES	C8-C7-N4-C5
2	A	2002	PE8	C11-C12-O13-C14
2	A	2002	PE8	C12-C11-O10-C9

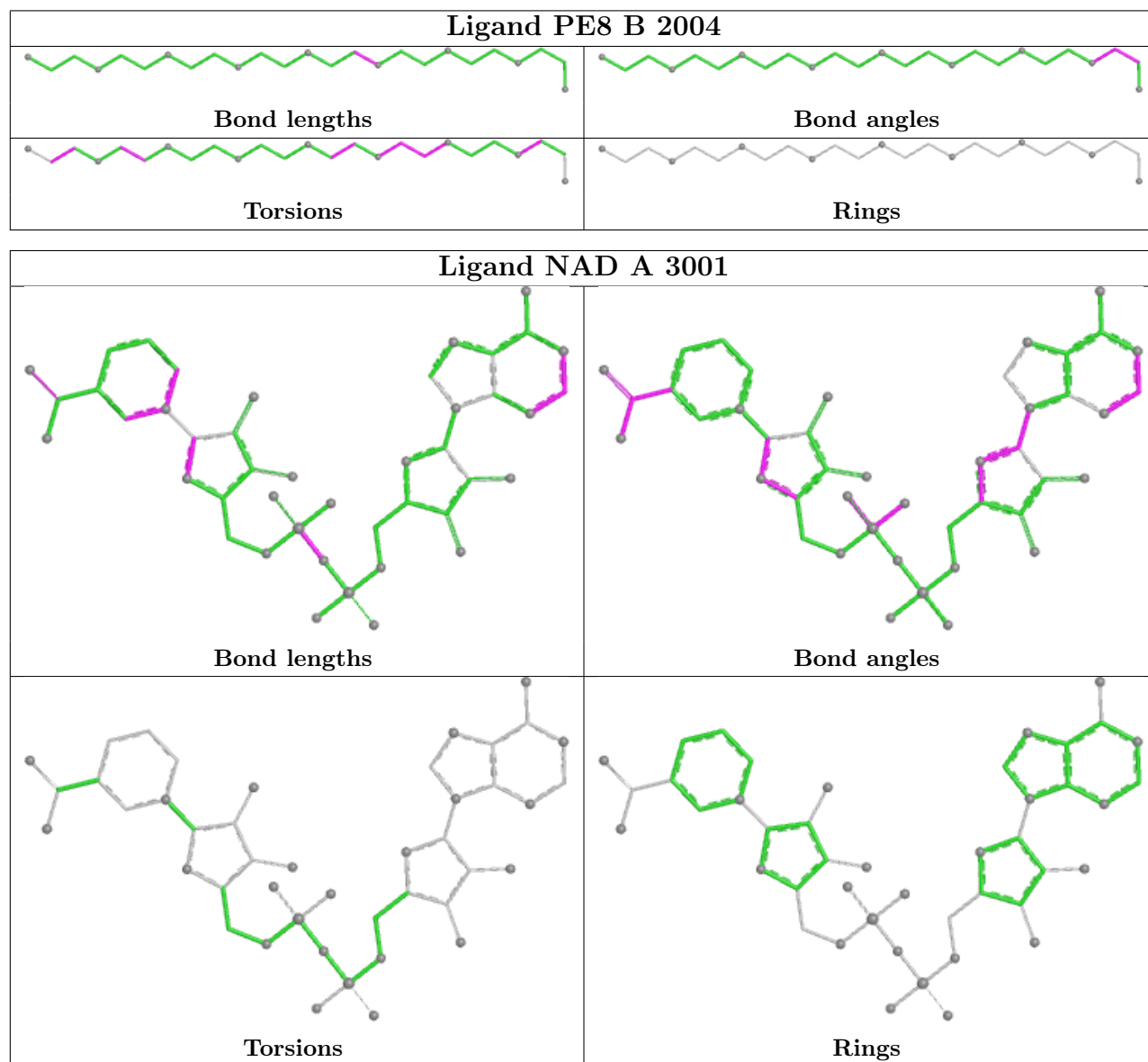
There are no ring outliers.

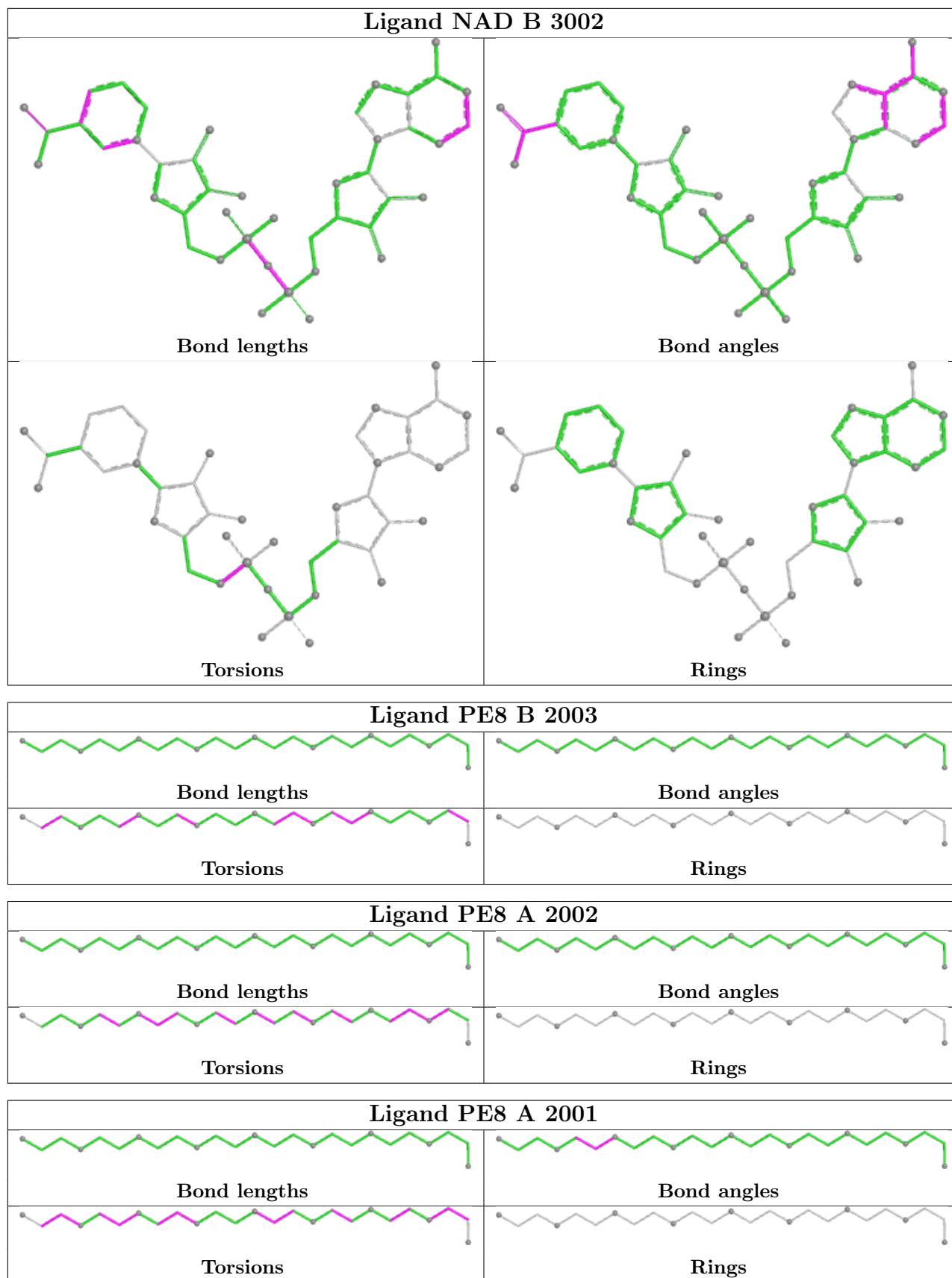
7 monomers are involved in 29 short contacts:

Mol	Chain	Res	Type	Clashes	Symm-Clashes
2	B	2004	PE8	2	0
3	A	3001	NAD	2	0
3	B	3002	NAD	3	0
2	B	2003	PE8	8	0
5	A	1001	GOL	2	0
2	A	2002	PE8	8	0
2	A	2001	PE8	4	0

The following is a two-dimensional graphical depiction of Mogul quality analysis of bond lengths, bond angles, torsion angles, and ring geometry for all instances of the Ligand of Interest. In addition, ligands with molecular weight > 250 and outliers as shown on the validation Tables will also be included. For torsion angles, if less than 5% of the Mogul distribution of torsion angles is within 10 degrees of the torsion angle in question, then that torsion angle is considered an outlier. Any bond that is central to one or more torsion angles identified as an outlier by Mogul will be highlighted in the graph. For rings, the root-mean-square deviation (RMSD) between the ring in question and similar rings identified by Mogul is calculated over all ring torsion angles. If the

average RMSD is greater than 60 degrees and the minimal RMSD between the ring in question and any Mogul-identified rings is also greater than 60 degrees, then that ring is considered an outlier. The outliers are highlighted in purple. The color gray indicates Mogul did not find sufficient equivalents in the CSD to analyse the geometry.





## 5.7 Other polymers [i](#)

There are no such residues in this entry.

## 5.8 Polymer linkage issues [i](#)

There are no chain breaks in this entry.

## 6 Fit of model and data [i](#)

### 6.1 Protein, DNA and RNA chains [i](#)

In the following table, the column labelled ‘#RSRZ> 2’ contains the number (and percentage) of RSRZ outliers, followed by percent RSRZ outliers for the chain as percentile scores relative to all X-ray entries and entries of similar resolution. The OWAB column contains the minimum, median, 95<sup>th</sup> percentile and maximum values of the occupancy-weighted average B-factor per residue. The column labelled ‘Q< 0.9’ lists the number of (and percentage) of residues with an average occupancy less than 0.9.

Mol	Chain	Analysed	<RSRZ>	#RSRZ>2	OWAB(Å <sup>2</sup> )	Q<0.9
1	A	312/312 (100%)	-0.10	8 (2%) 56 59	8, 14, 26, 48	0
1	B	312/312 (100%)	-0.04	7 (2%) 62 64	7, 14, 25, 46	0
All	All	624/624 (100%)	-0.07	15 (2%) 59 61	7, 14, 25, 48	0

All (15) RSRZ outliers are listed below:

Mol	Chain	Res	Type	RSRZ
1	B	40	ASN	7.7
1	A	1	MET	6.6
1	B	1	MET	5.4
1	A	40	ASN	4.9
1	B	39	LEU	4.4
1	A	39	LEU	4.3
1	A	43	VAL	4.0
1	B	41	THR	3.9
1	B	42	ASP	3.6
1	A	42	ASP	3.5
1	A	41	THR	3.1
1	B	43	VAL	2.3
1	B	193	TYR	2.2
1	A	2	ASN	2.1
1	A	65	GLU	2.0

### 6.2 Non-standard residues in protein, DNA, RNA chains [i](#)

There are no non-standard protein/DNA/RNA residues in this entry.

### 6.3 Carbohydrates [i](#)

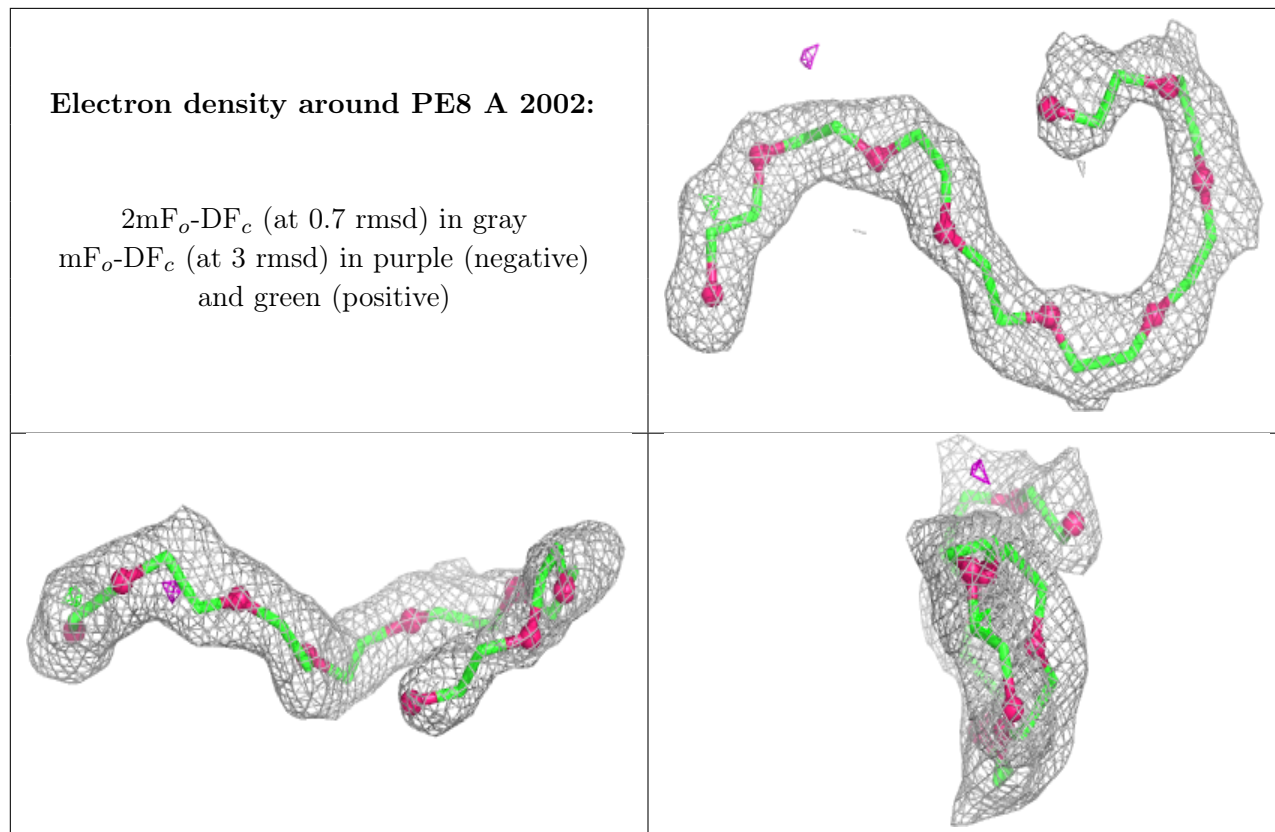
There are no monosaccharides in this entry.

## 6.4 Ligands [i](#)

In the following table, the Atoms column lists the number of modelled atoms in the group and the number defined in the chemical component dictionary. The B-factors column lists the minimum, median, 95<sup>th</sup> percentile and maximum values of B factors of atoms in the group. The column labelled 'Q< 0.9' lists the number of atoms with occupancy less than 0.9.

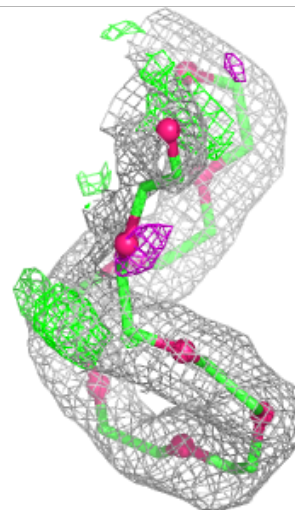
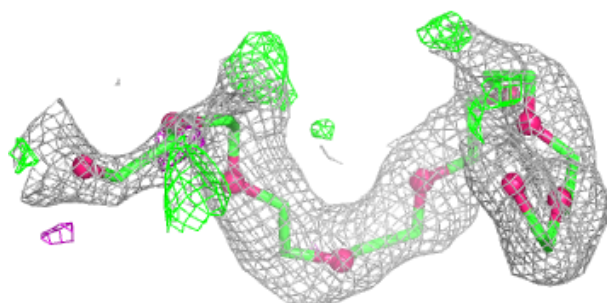
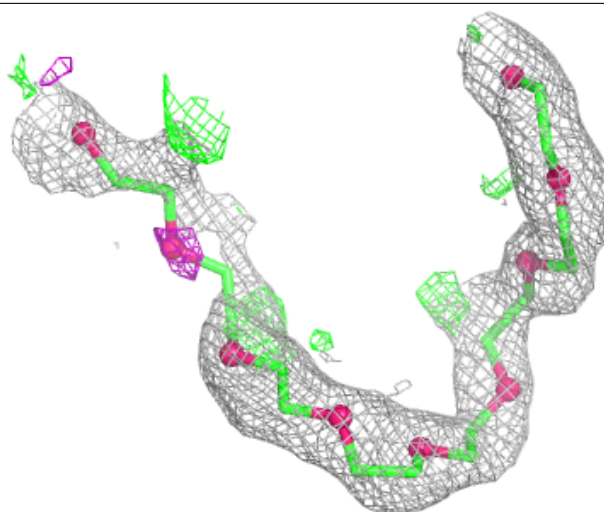
Mol	Type	Chain	Res	Atoms	RSCC	RSR	B-factors(Å <sup>2</sup> )	Q<0.9
2	PE8	A	2002	25/25	0.82	0.19	25,35,42,46	0
2	PE8	B	2003	25/25	0.82	0.23	25,31,45,46	0
2	PE8	B	2004	25/25	0.82	0.22	27,33,42,43	0
2	PE8	A	2001	25/25	0.84	0.23	27,33,44,45	0
5	GOL	A	1001	6/6	0.84	0.19	10,15,16,22	0
5	GOL	B	1002	6/6	0.88	0.18	9,16,17,28	0
4	MES	B	4002	12/12	0.93	0.24	20,20,20,20	0
4	MES	A	4001	12/12	0.94	0.19	20,20,20,20	0
3	NAD	A	3001	44/44	0.98	0.08	2,8,10,14	0
3	NAD	B	3002	44/44	0.98	0.08	5,9,11,12	0

The following is a graphical depiction of the model fit to experimental electron density of all instances of the Ligand of Interest. In addition, ligands with molecular weight > 250 and outliers as shown on the geometry validation Tables will also be included. Each fit is shown from different orientation to approximate a three-dimensional view.



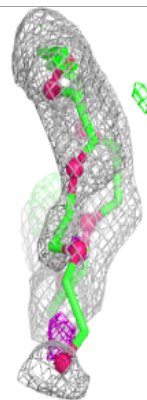
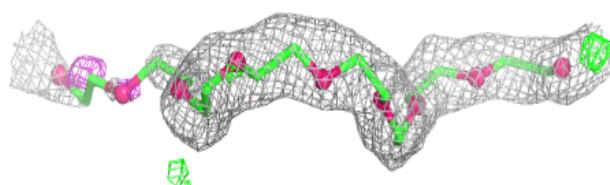
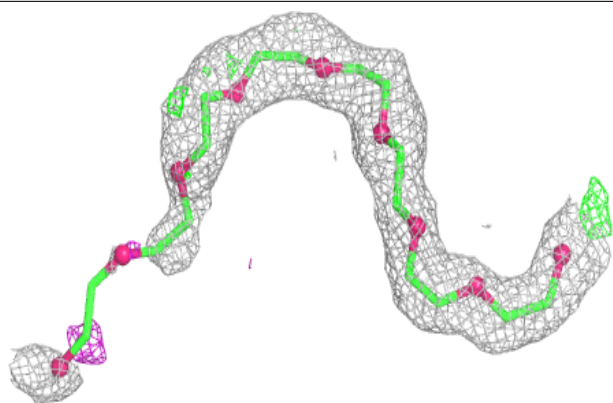
**Electron density around PE8 B 2003:**

$2mF_o-DF_c$  (at 0.7 rmsd) in gray  
 $mF_o-DF_c$  (at 3 rmsd) in purple (negative)  
and green (positive)

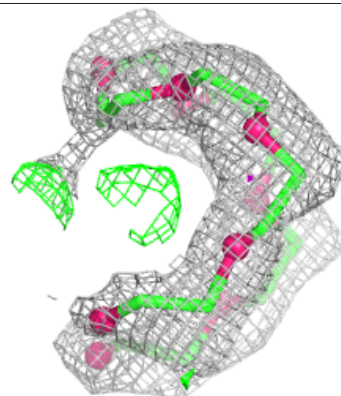
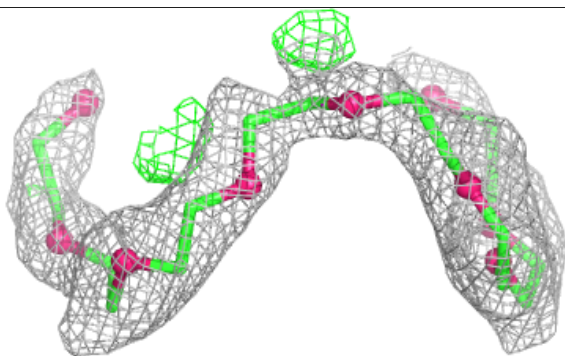
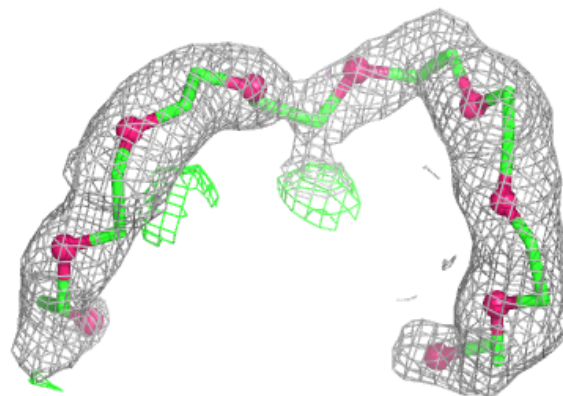


**Electron density around PE8 B 2004:**

$2mF_o-DF_c$  (at 0.7 rmsd) in gray  
 $mF_o-DF_c$  (at 3 rmsd) in purple (negative)  
and green (positive)

**Electron density around PE8 A 2001:**

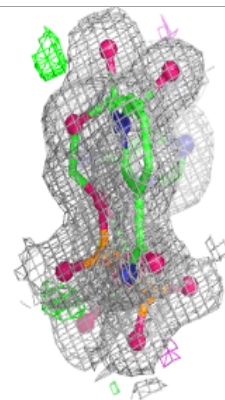
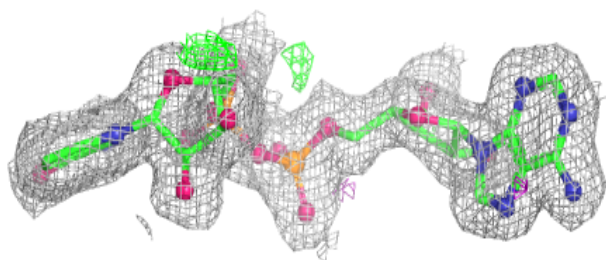
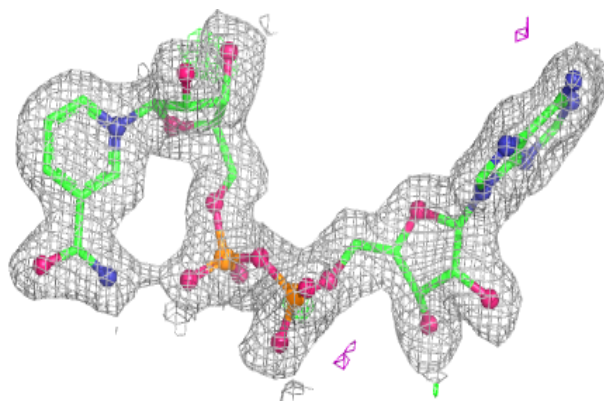
$2mF_o-DF_c$  (at 0.7 rmsd) in gray  
 $mF_o-DF_c$  (at 3 rmsd) in purple (negative)  
and green (positive)



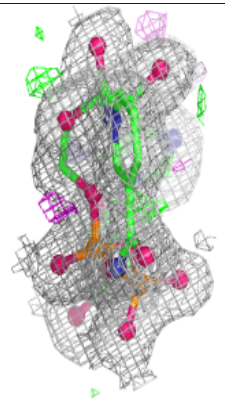
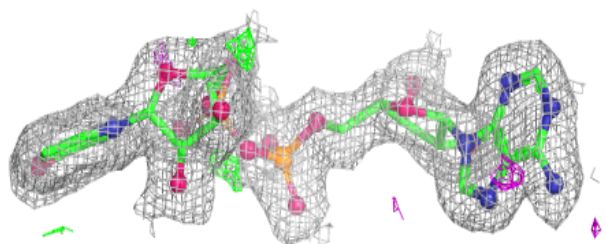
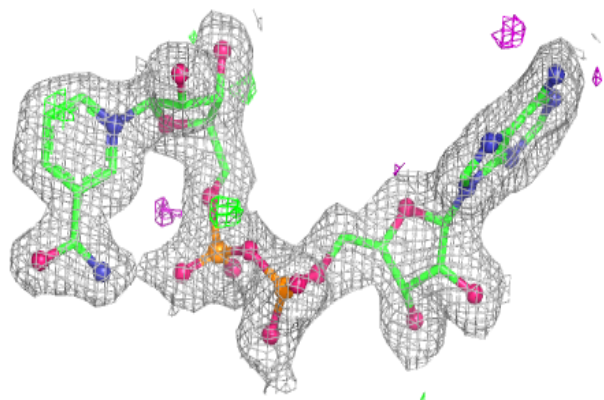


**Electron density around NAD A 3001:**

$2mF_o-DF_c$  (at 0.7 rmsd) in gray  
 $mF_o-DF_c$  (at 3 rmsd) in purple (negative)  
and green (positive)

**Electron density around NAD B 3002:**

$2mF_o-DF_c$  (at 0.7 rmsd) in gray  
 $mF_o-DF_c$  (at 3 rmsd) in purple (negative)  
and green (positive)



## 6.5 Other polymers [i](#)

There are no such residues in this entry.