



Full wwPDB EM Validation Report ⓘ

Feb 27, 2023 – 04:12 pm GMT

PDB ID : 7Z17
EMDB ID : EMD-14443
Title : E. coli C-P lyase bound to a PhnK ABC dimer in an open conformation
Authors : Amstrup, S.K.; Sofos, N.; Karlsen, J.L.; Skjerning, R.B.; Boesen, T.; Enghild, J.J.; Hove-Jensen, B.; Brodersen, D.E.
Deposited on : 2022-02-24
Resolution : 2.57 Å (reported)
Based on initial model : 4XB6

This is a Full wwPDB EM Validation Report for a publicly released PDB entry.

We welcome your comments at validation@mail.wwpdb.org

A user guide is available at

<https://www.wwpdb.org/validation/2017/EMValidationReportHelp>

with specific help available everywhere you see the ⓘ symbol.

The types of validation reports are described at

<http://www.wwpdb.org/validation/2017/FAQs#types>.

The following versions of software and data (see [references ⓘ](#)) were used in the production of this report:

EMDB validation analysis : 0.0.1.dev43
Mogul : 1.8.4, CSD as541be (2020)
MolProbity : 4.02b-467
buster-report : 1.1.7 (2018)
Percentile statistics : 20191225.v01 (using entries in the PDB archive December 25th 2019)
MapQ : 1.9.9
Ideal geometry (proteins) : Engh & Huber (2001)
Ideal geometry (DNA, RNA) : Parkinson et al. (1996)
Validation Pipeline (wwPDB-VP) : 2.32.1

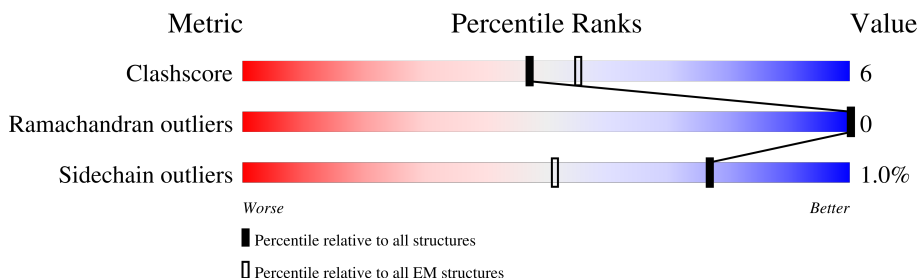
1 Overall quality at a glance

The following experimental techniques were used to determine the structure:

ELECTRON MICROSCOPY

The reported resolution of this entry is 2.57 Å.

Percentile scores (ranging between 0-100) for global validation metrics of the entry are shown in the following graphic. The table shows the number of entries on which the scores are based.





Metric	Whole archive (#Entries)	EM structures (#Entries)
Clashscore	158937	4297
Ramachandran outliers	154571	4023
Sidechain outliers	154315	3826

The table below summarises the geometric issues observed across the polymeric chains and their fit to the map. The red, orange, yellow and green segments of the bar indicate the fraction of residues that contain outliers for ≥ 3 , 2, 1 and 0 types of geometric quality criteria respectively. A grey segment represents the fraction of residues that are not modelled. The numeric value for each fraction is indicated below the corresponding segment, with a dot representing fractions $\leq 5\%$. The upper red bar (where present) indicates the fraction of residues that have poor fit to the EM map (all-atom inclusion $< 40\%$). The numeric value is given above the bar.

Mol	Chain	Length	Quality of chain
1	A	150	
1	E	150	
2	B	194	
2	F	194	
3	C	354	
3	G	354	
4	D	281	
4	H	281	

Continued on next page...

Continued from previous page...

Mol	Chain	Length	Quality of chain
5	I	291	 <p>49% 67% 19% 15%</p>
5	J	291	 <p>85% 68% 17% 15%</p>

2 Entry composition

There are 7 unique types of molecules in this entry. The entry contains 37600 atoms, of which 18677 are hydrogens and 0 are deuteriums.

In the tables below, the AltConf column contains the number of residues with at least one atom in alternate conformation and the Trace column contains the number of residues modelled with at most 2 atoms.

- Molecule 1 is a protein called Alpha-D-ribose 1-methylphosphonate 5-triphosphate synthase subunit PhnG.

Mol	Chain	Residues	Atoms					AltConf	Trace	
			Total	C	H	N	O			S
1	A	145	Total	C	H	N	O	S	0	0
			2217	690	1098	214	209	6		
1	E	144	Total	C	H	N	O	S	0	0
			2210	688	1095	213	208	6		

There are 2 discrepancies between the modelled and reference sequences:

Chain	Residue	Modelled	Actual	Comment	Reference
A	85	LEU	GLN	conflict	UNP P16685
E	85	LEU	GLN	conflict	UNP P16685

- Molecule 2 is a protein called Alpha-D-ribose 1-methylphosphonate 5-triphosphate synthase subunit PhnH.

Mol	Chain	Residues	Atoms					AltConf	Trace	
			Total	C	H	N	O			S
2	B	193	Total	C	H	N	O	S	0	0
			2955	926	1488	256	278	7		
2	F	193	Total	C	H	N	O	S	0	0
			2955	926	1488	256	278	7		

- Molecule 3 is a protein called Alpha-D-ribose 1-methylphosphonate 5-triphosphate synthase subunit PhnI.

Mol	Chain	Residues	Atoms					AltConf	Trace	
			Total	C	H	N	O			S
3	C	353	Total	C	H	N	O	S	0	0
			5395	1713	2662	478	531	11		
3	G	353	Total	C	H	N	O	S	0	0
			5394	1713	2661	478	531	11		

There are 4 discrepancies between the modelled and reference sequences:

Chain	Residue	Modelled	Actual	Comment	Reference
C	264	ASP	GLY	conflict	UNP P16687
C	351	LYS	GLN	conflict	UNP P16687
G	264	ASP	GLY	conflict	UNP P16687
G	351	LYS	GLN	conflict	UNP P16687

- Molecule 4 is a protein called Alpha-D-ribose 1-methylphosphonate 5-phosphate C-P lyase.

Mol	Chain	Residues	Atoms					AltConf	Trace	
4	D	279	Total	C	H	N	O	S	0	0
			4377	1405	2153	381	424	14		
4	H	276	Total	C	H	N	O	S	0	0
			4324	1390	2126	375	419	14		

There are 2 discrepancies between the modelled and reference sequences:

Chain	Residue	Modelled	Actual	Comment	Reference
D	103	LEU	VAL	conflict	UNP P16688
H	103	LEU	VAL	conflict	UNP P16688

- Molecule 5 is a protein called Putative phosphonates utilization ATP-binding protein PhnK.

Mol	Chain	Residues	Atoms					AltConf	Trace	
5	I	248	Total	C	H	N	O	S	0	0
			3872	1208	1949	352	358	5		
5	J	248	Total	C	H	N	O	S	0	0
			3872	1208	1949	352	358	5		

There are 78 discrepancies between the modelled and reference sequences:

Chain	Residue	Modelled	Actual	Comment	Reference
I	253	GLU	-	expression tag	UNP P16678
I	254	ASN	-	expression tag	UNP P16678
I	255	LEU	-	expression tag	UNP P16678
I	256	TYR	-	expression tag	UNP P16678
I	257	PHE	-	expression tag	UNP P16678
I	258	GLN	-	expression tag	UNP P16678
I	259	GLY	-	expression tag	UNP P16678
I	260	GLN	-	expression tag	UNP P16678
I	261	PHE	-	expression tag	UNP P16678
I	262	GLY	-	expression tag	UNP P16678
I	263	SER	-	expression tag	UNP P16678
I	264	TRP	-	expression tag	UNP P16678
I	265	SER	-	expression tag	UNP P16678

Continued on next page...

Continued from previous page...

Chain	Residue	Modelled	Actual	Comment	Reference
I	266	HIS	-	expression tag	UNP P16678
I	267	PRO	-	expression tag	UNP P16678
I	268	GLN	-	expression tag	UNP P16678
I	269	PHE	-	expression tag	UNP P16678
I	270	GLU	-	expression tag	UNP P16678
I	271	LYS	-	expression tag	UNP P16678
I	272	GLY	-	expression tag	UNP P16678
I	273	GLY	-	expression tag	UNP P16678
I	274	GLY	-	expression tag	UNP P16678
I	275	SER	-	expression tag	UNP P16678
I	276	GLY	-	expression tag	UNP P16678
I	277	GLY	-	expression tag	UNP P16678
I	278	GLY	-	expression tag	UNP P16678
I	279	SER	-	expression tag	UNP P16678
I	280	GLY	-	expression tag	UNP P16678
I	281	GLY	-	expression tag	UNP P16678
I	282	GLY	-	expression tag	UNP P16678
I	283	SER	-	expression tag	UNP P16678
I	284	TRP	-	expression tag	UNP P16678
I	285	SER	-	expression tag	UNP P16678
I	286	HIS	-	expression tag	UNP P16678
I	287	PRO	-	expression tag	UNP P16678
I	288	GLN	-	expression tag	UNP P16678
I	289	PHE	-	expression tag	UNP P16678
I	290	GLU	-	expression tag	UNP P16678
I	291	LYS	-	expression tag	UNP P16678
J	253	GLU	-	expression tag	UNP P16678
J	254	ASN	-	expression tag	UNP P16678
J	255	LEU	-	expression tag	UNP P16678
J	256	TYR	-	expression tag	UNP P16678
J	257	PHE	-	expression tag	UNP P16678
J	258	GLN	-	expression tag	UNP P16678
J	259	GLY	-	expression tag	UNP P16678
J	260	GLN	-	expression tag	UNP P16678
J	261	PHE	-	expression tag	UNP P16678
J	262	GLY	-	expression tag	UNP P16678
J	263	SER	-	expression tag	UNP P16678
J	264	TRP	-	expression tag	UNP P16678
J	265	SER	-	expression tag	UNP P16678
J	266	HIS	-	expression tag	UNP P16678
J	267	PRO	-	expression tag	UNP P16678
J	268	GLN	-	expression tag	UNP P16678

Continued on next page...

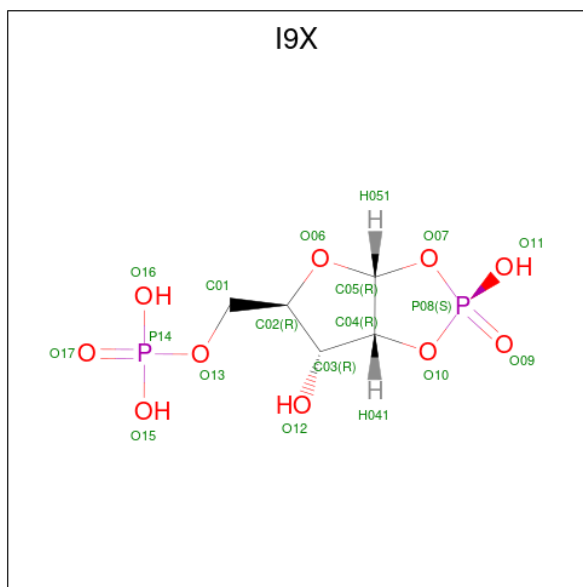
Continued from previous page...

Chain	Residue	Modelled	Actual	Comment	Reference
J	269	PHE	-	expression tag	UNP P16678
J	270	GLU	-	expression tag	UNP P16678
J	271	LYS	-	expression tag	UNP P16678
J	272	GLY	-	expression tag	UNP P16678
J	273	GLY	-	expression tag	UNP P16678
J	274	GLY	-	expression tag	UNP P16678
J	275	SER	-	expression tag	UNP P16678
J	276	GLY	-	expression tag	UNP P16678
J	277	GLY	-	expression tag	UNP P16678
J	278	GLY	-	expression tag	UNP P16678
J	279	SER	-	expression tag	UNP P16678
J	280	GLY	-	expression tag	UNP P16678
J	281	GLY	-	expression tag	UNP P16678
J	282	GLY	-	expression tag	UNP P16678
J	283	SER	-	expression tag	UNP P16678
J	284	TRP	-	expression tag	UNP P16678
J	285	SER	-	expression tag	UNP P16678
J	286	HIS	-	expression tag	UNP P16678
J	287	PRO	-	expression tag	UNP P16678
J	288	GLN	-	expression tag	UNP P16678
J	289	PHE	-	expression tag	UNP P16678
J	290	GLU	-	expression tag	UNP P16678
J	291	LYS	-	expression tag	UNP P16678

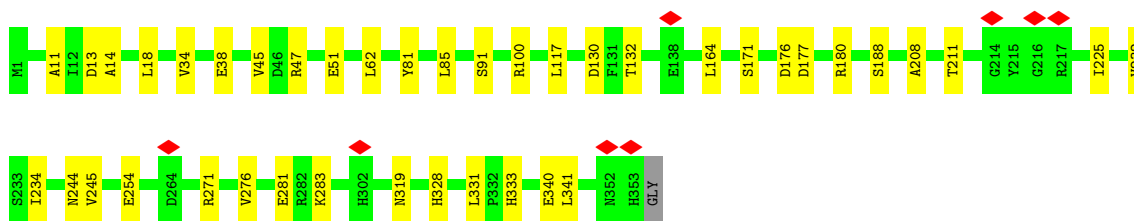
- Molecule 6 is ZINC ION (three-letter code: ZN) (formula: Zn) (labeled as "Ligand of Interest" by depositor).

Mol	Chain	Residues	Atoms	AltConf
6	C	1	Total Zn 1 1	0
6	D	1	Total Zn 1 1	0
6	G	1	Total Zn 1 1	0
6	H	1	Total Zn 1 1	0

- Molecule 7 is alpha-D-ribose-1,2-cyclic-phosphate-5-phosphate (three-letter code: I9X) (formula: C₅H₁₀O₁₀P₂) (labeled as "Ligand of Interest" by depositor).

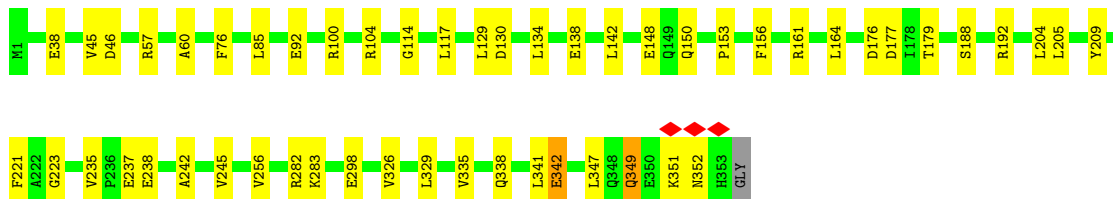


Mol	Chain	Residues	Atoms					AltConf
			Total	C	H	O	P	
7	D	1	25	5	8	10	2	0



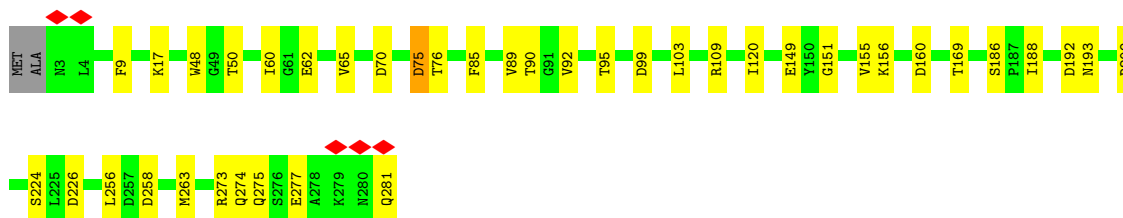
- Molecule 3: Alpha-D-ribose 1-methylphosphonate 5-triphosphate synthase subunit PhnI

Chain G: 85% 14%



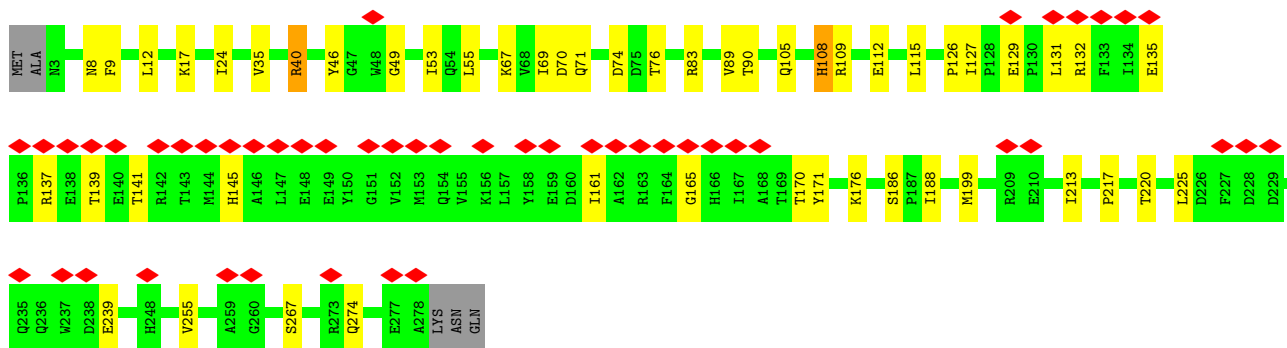
- Molecule 4: Alpha-D-ribose 1-methylphosphonate 5-phosphate C-P lyase

Chain D: 85% 14%



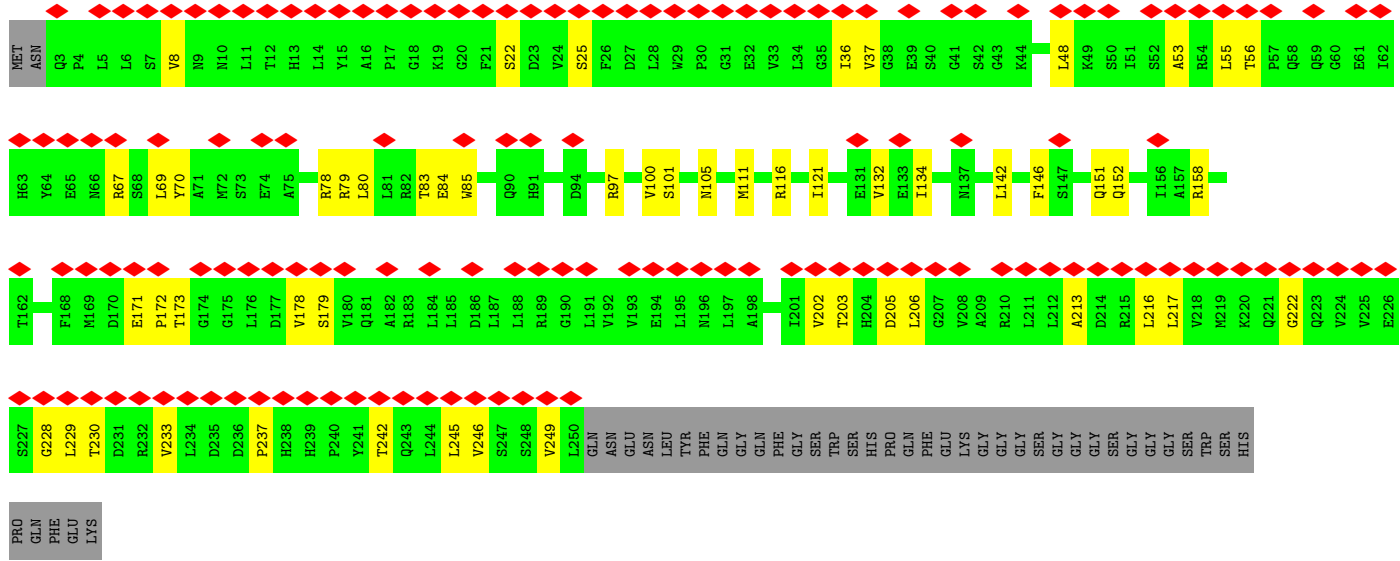
- Molecule 4: Alpha-D-ribose 1-methylphosphonate 5-phosphate C-P lyase

Chain H: 17% 80% 17%

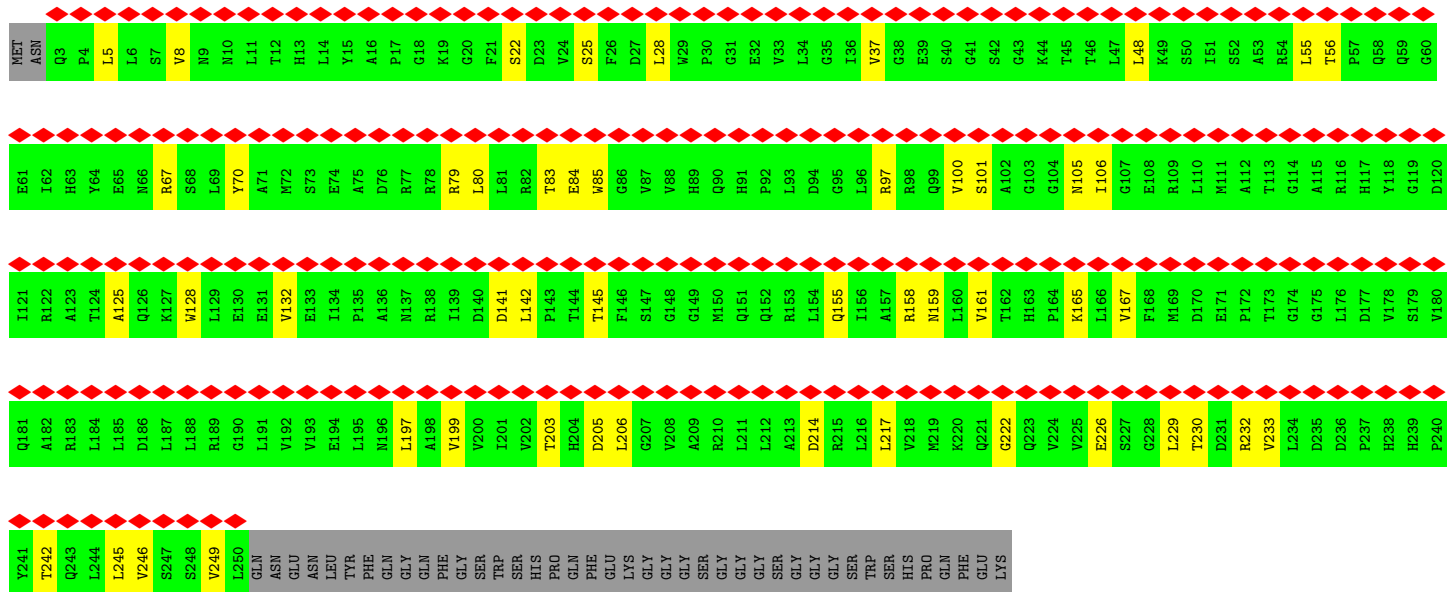
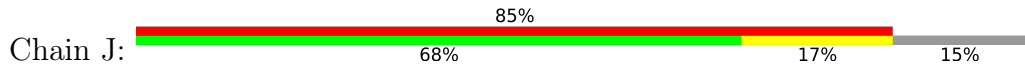


- Molecule 5: Putative phosphonates utilization ATP-binding protein PhnK

Chain I: 49% 67% 19% 15%



● Molecule 5: Putative phosphonates utilization ATP-binding protein PhnK



4 Experimental information

Property	Value	Source
EM reconstruction method	SINGLE PARTICLE	Depositor
Imposed symmetry	POINT, C1	Depositor
Number of particles used	31280	Depositor
Resolution determination method	FSC 0.143 CUT-OFF	Depositor
CTF correction method	PHASE FLIPPING AND AMPLITUDE CORRECTION	Depositor
Microscope	FEI TITAN KRIOS	Depositor
Voltage (kV)	300	Depositor
Electron dose ($e^-/\text{\AA}^2$)	62	Depositor
Minimum defocus (nm)	500	Depositor
Maximum defocus (nm)	1400	Depositor
Magnification	135000	Depositor
Image detector	GATAN K3 (6k x 4k)	Depositor
Maximum map value	1.057	Depositor
Minimum map value	-0.526	Depositor
Average map value	0.001	Depositor
Map value standard deviation	0.023	Depositor
Recommended contour level	0.135	Depositor
Map size (Å)	355.85, 355.85, 355.85	wwPDB
Map dimensions	386, 386, 386	wwPDB
Map angles (°)	90.0, 90.0, 90.0	wwPDB
Pixel spacing (Å)	0.9218912, 0.9218912, 0.9218912	Depositor

5 Model quality [i](#)

5.1 Standard geometry [i](#)

Bond lengths and bond angles in the following residue types are not validated in this section: ZN, I9X

The Z score for a bond length (or angle) is the number of standard deviations the observed value is removed from the expected value. A bond length (or angle) with $|Z| > 5$ is considered an outlier worth inspection. RMSZ is the root-mean-square of all Z scores of the bond lengths (or angles).

Mol	Chain	Bond lengths		Bond angles	
		RMSZ	# Z >5	RMSZ	# Z >5
1	A	0.25	0/1135	0.54	0/1535
1	E	0.24	0/1131	0.53	0/1530
2	B	0.24	0/1495	0.50	0/2044
2	F	0.23	0/1495	0.49	0/2044
3	C	0.25	0/2787	0.49	0/3779
3	G	0.25	0/2787	0.50	0/3779
4	D	0.26	0/2277	0.50	0/3094
4	H	0.25	0/2251	0.49	0/3060
5	I	0.23	0/1957	0.49	0/2657
5	J	0.23	0/1957	0.49	0/2657
All	All	0.24	0/19272	0.50	0/26179

There are no bond length outliers.

There are no bond angle outliers.

There are no chirality outliers.

There are no planarity outliers.

5.2 Too-close contacts [i](#)

In the following table, the Non-H and H(model) columns list the number of non-hydrogen atoms and hydrogen atoms in the chain respectively. The H(added) column lists the number of hydrogen atoms added and optimized by MolProbity. The Clashes column lists the number of clashes within the asymmetric unit, whereas Symm-Clashes lists symmetry-related clashes.

Mol	Chain	Non-H	H(model)	H(added)	Clashes	Symm-Clashes
1	A	1119	1098	1107	18	0
1	E	1115	1095	1104	22	0
2	B	1467	1488	1494	19	0

Continued on next page...

Continued from previous page...

Mol	Chain	Non-H	H(model)	H(added)	Clashes	Symm-Clashes
2	F	1467	1488	1494	23	0
3	C	2733	2662	2679	31	0
3	G	2733	2661	2679	38	0
4	D	2224	2153	2162	28	0
4	H	2198	2126	2135	30	0
5	I	1923	1949	1947	35	0
5	J	1923	1949	1947	30	0
6	C	1	0	0	0	0
6	D	1	0	0	0	0
6	G	1	0	0	0	0
6	H	1	0	0	0	0
7	D	17	8	0	1	0
All	All	18923	18677	18748	240	0

The all-atom clashscore is defined as the number of clashes found per 1000 atoms (including hydrogen atoms). The all-atom clashscore for this structure is 6.

All (240) close contacts within the same asymmetric unit are listed below, sorted by their clash magnitude.

Atom-1	Atom-2	Interatomic distance (Å)	Clash overlap (Å)
4:D:273:ARG:NH2	4:D:274:GLN:OE1	2.15	0.79
4:D:275:GLN:OE1	4:D:281:GLN:NE2	2.18	0.76
1:E:138:ARG:NH1	3:G:114:GLY:O	2.19	0.76
3:C:13:ASP:OD1	3:C:14:ALA:N	2.21	0.74
1:A:110:ASN:O	1:A:114:THR:HG22	1.88	0.74
1:E:15:LEU:O	1:E:18:SER:OG	2.06	0.72
3:G:138:GLU:N	3:G:138:GLU:OE1	2.25	0.70
2:F:138:LEU:HD11	2:F:149:ILE:HD13	1.72	0.70
3:G:342:GLU:N	3:G:342:GLU:OE1	2.25	0.70
2:F:4:GLU:O	2:F:80:HIS:NE2	2.26	0.69
4:H:67:LYS:HE3	4:H:69:ILE:HD11	1.75	0.69
3:C:254:GLU:OE1	3:C:271:ARG:NH2	2.27	0.68
3:G:46:ASP:OD1	3:G:57:ARG:NH1	2.26	0.68
1:E:135:ASN:ND2	3:G:148:GLU:O	2.26	0.66
5:I:203:THR:OG1	5:I:205:ASP:OD1	2.13	0.66
3:G:205:LEU:HD11	3:G:282:ARG:HD3	1.77	0.66
2:F:138:LEU:HD11	2:F:149:ILE:CD1	2.25	0.65
3:G:177:ASP:OD1	3:G:179:THR:OG1	2.10	0.65
2:F:106:LEU:CD1	2:F:157:ILE:HG22	2.26	0.65
3:C:130:ASP:OD1	3:C:132:THR:OG1	2.15	0.64
2:F:8:MET:SD	2:F:8:MET:N	2.70	0.64

Continued on next page...

Continued from previous page...

Atom-1	Atom-2	Interatomic distance (Å)	Clash overlap (Å)
5:J:203:THR:OG1	5:J:205:ASP:OD1	2.15	0.64
4:H:176:LYS:HB2	4:H:225:LEU:HD21	1.80	0.63
5:I:206:LEU:HD13	5:I:249:VAL:HG21	1.81	0.63
5:J:206:LEU:HD13	5:J:249:VAL:HG21	1.81	0.63
3:C:176:ASP:OD2	3:C:188:SER:OG	2.13	0.63
4:H:109:ARG:NH2	4:H:112:GLU:OE2	2.33	0.61
3:C:11:ALA:CB	1:E:139:VAL:HG22	2.30	0.61
3:G:92:GLU:OE2	3:G:235:VAL:HG23	2.00	0.61
5:I:146:PHE:O	5:I:151:GLN:NE2	2.34	0.61
2:B:138:LEU:HD22	2:B:191:VAL:HG22	1.83	0.61
3:G:205:LEU:HD11	3:G:282:ARG:CD	2.31	0.61
4:D:156:LYS:NZ	4:D:169:THR:OG1	2.33	0.61
4:H:9:PHE:O	4:H:17:LYS:NZ	2.19	0.60
4:H:170:THR:HG23	4:H:171:TYR:CD2	2.37	0.60
1:E:15:LEU:HD21	1:E:98:ILE:HG21	1.84	0.59
4:H:126:PRO:HB2	4:H:127:ILE:HD12	1.84	0.59
3:G:176:ASP:OD2	3:G:188:SER:OG	2.17	0.59
4:D:60:ILE:HD11	4:D:92:VAL:HG21	1.84	0.59
5:I:229:LEU:HD23	5:I:230:THR:N	2.18	0.59
3:C:91:SER:HA	3:C:234:ILE:HG22	1.85	0.58
5:J:229:LEU:HD23	5:J:230:THR:N	2.17	0.58
1:A:58:GLU:OE2	3:C:171:SER:OG	2.21	0.58
4:D:273:ARG:NH1	4:D:277:GLU:OE1	2.37	0.58
2:B:138:LEU:HD11	2:B:149:ILE:CD1	2.34	0.58
4:D:156:LYS:NZ	4:D:160:ASP:OD2	2.37	0.57
2:F:106:LEU:HD12	2:F:157:ILE:HG22	1.85	0.57
5:I:55:LEU:O	5:I:70:TYR:OH	2.18	0.57
4:D:193:ASN:OD1	4:D:224:SER:OG	2.23	0.57
3:G:150:GLN:N	3:G:150:GLN:OE1	2.38	0.57
5:J:55:LEU:O	5:J:70:TYR:OH	2.16	0.57
2:B:77:LEU:HD23	2:B:85:LEU:HD21	1.87	0.56
3:C:11:ALA:HB1	1:E:139:VAL:HG22	1.87	0.56
1:E:38:VAL:HG23	1:E:38:VAL:O	2.06	0.56
2:F:54:THR:HG23	2:F:55:LEU:HG	1.88	0.56
2:B:125:LEU:HD22	2:B:157:ILE:HD13	1.86	0.56
3:C:34:VAL:HG21	3:G:134:LEU:HD23	1.88	0.56
2:B:138:LEU:CD2	2:B:191:VAL:HG22	2.36	0.56
4:H:49:GLY:HA2	4:H:53:ILE:HD13	1.88	0.56
5:J:197:LEU:HD12	5:J:197:LEU:O	2.06	0.56
5:J:100:VAL:O	5:J:105:ASN:ND2	2.40	0.55
5:I:80:LEU:HD11	5:I:85:TRP:CD1	2.42	0.55

Continued on next page...

Continued from previous page...

Atom-1	Atom-2	Interatomic distance (Å)	Clash overlap (Å)
4:H:89:VAL:HG23	4:H:90:THR:HG23	1.87	0.55
1:A:15:LEU:HD21	1:A:98:ILE:HG21	1.89	0.54
2:F:161:LEU:HB3	2:F:191:VAL:HG11	1.90	0.54
5:J:142:LEU:H	5:J:142:LEU:HD23	1.71	0.54
3:C:62:LEU:HD11	3:G:130:ASP:O	2.08	0.54
1:E:40:ARG:NH2	3:G:238:GLU:OE2	2.41	0.54
4:H:49:GLY:CA	4:H:53:ILE:HD13	2.38	0.54
5:I:213:ALA:O	5:I:230:THR:HG21	2.09	0.53
2:B:30:VAL:HG23	2:B:147:ARG:NH1	2.23	0.53
4:H:71:GLN:O	4:H:267:SER:OG	2.25	0.53
2:B:174:LEU:HD21	2:B:176:LEU:HD21	1.90	0.53
4:D:155:VAL:HG22	5:I:111:MET:CE	2.39	0.52
4:H:129:GLU:OE1	4:H:131:LEU:N	2.43	0.52
4:H:132:ARG:NH2	4:H:135:GLU:O	2.42	0.52
1:E:134:VAL:CG1	3:G:117:LEU:HD21	2.39	0.52
4:D:186:SER:HB3	4:D:188:ILE:HG23	1.92	0.52
5:J:242:THR:O	5:J:246:VAL:HG23	2.09	0.52
1:A:17:HIS:NE2	3:C:244:ASN:OD1	2.42	0.52
3:C:164:LEU:HD13	3:G:341:LEU:CD2	2.40	0.52
5:I:242:THR:O	5:I:246:VAL:HG23	2.09	0.52
4:D:85:PHE:O	4:D:89:VAL:HG22	2.11	0.51
3:C:177:ASP:OD2	3:C:180:ARG:NH1	2.44	0.51
2:F:65:SER:O	2:F:69:ASN:N	2.39	0.51
3:C:18:LEU:HD23	3:G:142:LEU:HD22	1.91	0.51
3:G:338:GLN:HA	3:G:341:LEU:HD12	1.93	0.51
5:J:141:ASP:OD1	5:J:142:LEU:HD23	2.10	0.51
1:E:58:GLU:OE1	1:E:58:GLU:N	2.42	0.51
5:I:36:ILE:HB	5:I:202:VAL:HG22	1.93	0.51
4:D:89:VAL:HG23	4:D:90:THR:HG23	1.92	0.51
5:J:22:SER:N	5:J:222:GLY:O	2.42	0.51
2:F:153:LEU:HG	2:F:157:ILE:HD11	1.92	0.50
3:G:156:PHE:CZ	3:G:256:VAL:HG22	2.45	0.50
5:I:105:ASN:O	5:I:158:ARG:NH1	2.41	0.50
5:J:226:GLU:OE2	5:J:232:ARG:NH1	2.43	0.50
2:F:82:ASN:ND2	3:G:237:GLU:OE1	2.43	0.50
4:H:70:ASP:OD2	4:H:76:THR:HG21	2.12	0.50
5:I:152:GLN:NE2	5:I:172:PRO:O	2.45	0.50
5:J:155:GLN:O	5:J:159:ASN:ND2	2.44	0.50
3:C:276:VAL:HG11	3:C:283:LYS:HG3	1.93	0.50
2:F:77:LEU:O	2:F:81:THR:OG1	2.24	0.50
5:I:132:VAL:HG23	5:I:134:ILE:HG13	1.94	0.50

Continued on next page...

Continued from previous page...

Atom-1	Atom-2	Interatomic distance (Å)	Clash overlap (Å)
5:I:245:LEU:O	5:I:249:VAL:HG23	2.12	0.50
3:C:331:LEU:O	3:C:333:HIS:ND1	2.45	0.49
4:D:50:THR:OG1	7:D:1001:I9X:O15	2.24	0.49
3:C:47:ARG:NE	3:C:51:GLU:OE2	2.42	0.49
4:D:75:ASP:N	4:D:75:ASP:OD1	2.45	0.49
4:D:258:ASP:O	3:G:161:ARG:NH2	2.44	0.49
5:J:128:TRP:O	5:J:132:VAL:HG22	2.12	0.49
4:D:149:GLU:OE1	5:I:78:ARG:NH2	2.45	0.49
4:H:186:SER:O	4:H:188:ILE:N	2.42	0.49
1:A:134:VAL:CG1	3:C:117:LEU:HD21	2.43	0.48
2:F:70:ASN:OD1	2:F:71:ASP:N	2.46	0.48
5:I:22:SER:N	5:I:222:GLY:O	2.46	0.48
5:I:80:LEU:HD12	5:I:84:GLU:HB3	1.94	0.48
5:J:84:GLU:OE2	5:J:165:LYS:NZ	2.46	0.48
2:F:136:LEU:HD21	2:F:191:VAL:HG21	1.95	0.48
4:H:74:ASP:O	4:H:83:ARG:NH2	2.47	0.48
5:I:8:VAL:O	5:I:25:SER:OG	2.16	0.48
5:J:79:ARG:O	5:J:83:THR:HG22	2.13	0.48
1:A:127:ILE:HG23	3:C:100:ARG:HD2	1.96	0.48
1:E:72:VAL:HG21	1:E:97:LEU:HA	1.96	0.48
3:G:192:ARG:NH2	3:G:298:GLU:OE2	2.44	0.48
5:J:80:LEU:HD11	5:J:85:TRP:CD1	2.49	0.47
3:G:104:ARG:NH2	3:G:153:PRO:O	2.47	0.47
4:H:135:GLU:N	4:H:135:GLU:OE1	2.47	0.47
5:J:214:ASP:O	5:J:230:THR:HG23	2.14	0.47
3:C:81:TYR:CE2	3:C:85:LEU:HD11	2.50	0.47
3:C:208:ALA:O	3:C:211:THR:OG1	2.31	0.47
5:J:101:SER:O	5:J:105:ASN:ND2	2.48	0.47
4:D:155:VAL:HG22	5:I:111:MET:HE3	1.95	0.47
1:E:9:GLN:NE2	3:G:242:ALA:O	2.47	0.47
4:D:99:ASP:OD1	4:D:99:ASP:N	2.47	0.47
2:B:153:LEU:HD21	2:B:176:LEU:CD1	2.44	0.47
1:A:11:TRP:NE1	1:A:99:ASP:OD1	2.43	0.47
1:A:26:ARG:O	1:A:30:LEU:HD23	2.15	0.47
2:B:193:VAL:HG12	2:B:193:VAL:O	2.15	0.47
1:E:134:VAL:HG12	3:G:117:LEU:HD21	1.96	0.47
2:F:132:GLY:O	2:F:152:GLN:HG2	2.15	0.47
5:I:79:ARG:O	5:I:83:THR:HG22	2.15	0.47
2:B:41:TRP:O	2:B:44:LEU:N	2.48	0.46
2:F:138:LEU:HD23	2:F:191:VAL:HG23	1.97	0.46
1:E:27:LEU:HD13	1:E:98:ILE:HD11	1.97	0.46

Continued on next page...

Continued from previous page...

Atom-1	Atom-2	Interatomic distance (Å)	Clash overlap (Å)
4:H:161:ILE:O	4:H:165:GLY:N	2.43	0.46
2:B:97:THR:HG22	2:B:98:ASP:N	2.30	0.46
2:F:77:LEU:HD22	2:F:85:LEU:HD21	1.97	0.46
5:J:245:LEU:O	5:J:249:VAL:HG23	2.15	0.46
1:A:4:ASP:OD1	1:A:5:THR:N	2.45	0.46
4:D:256:LEU:HD21	4:D:263:MET:SD	2.56	0.46
5:I:48:LEU:HD23	5:I:48:LEU:O	2.16	0.46
3:C:341:LEU:HD22	3:G:164:LEU:HD13	1.98	0.46
4:D:109:ARG:NH1	4:D:192:ASP:OD1	2.49	0.46
4:H:109:ARG:N	4:H:188:ILE:HG22	2.31	0.45
4:H:53:ILE:HD12	4:H:105:GLN:OE1	2.16	0.45
4:H:217:PRO:O	4:H:220:THR:OG1	2.25	0.45
4:D:226:ASP:OD1	5:I:116:ARG:NH2	2.48	0.45
1:E:74:LEU:HD12	1:E:78:THR:OG1	2.16	0.45
2:B:28:PRO:O	2:B:147:ARG:NH1	2.50	0.45
3:C:331:LEU:HD21	4:D:48:TRP:CE3	2.52	0.45
5:J:141:ASP:OD1	5:J:145:THR:OG1	2.29	0.45
4:H:137:ARG:HG3	4:H:139:THR:HG22	1.99	0.45
4:D:65:VAL:HG12	4:D:95:THR:HG22	1.97	0.44
2:F:88:GLN:N	2:F:88:GLN:OE1	2.50	0.44
2:F:125:LEU:HD22	2:F:157:ILE:CD1	2.47	0.44
3:C:38:GLU:HA	3:C:45:VAL:HG21	1.98	0.44
4:H:35:VAL:N	4:H:213:ILE:O	2.43	0.44
5:I:100:VAL:O	5:I:105:ASN:ND2	2.49	0.44
1:E:44:THR:HG23	1:E:44:THR:O	2.18	0.44
2:F:113:THR:HG22	2:F:114:ALA:N	2.33	0.44
3:C:232:VAL:O	3:C:245:VAL:HG22	2.17	0.44
5:J:56:THR:O	5:J:56:THR:HG23	2.17	0.44
2:B:64:LEU:HD23	2:B:96:VAL:HB	2.00	0.44
4:H:24:ILE:HD11	4:H:55:LEU:CD2	2.47	0.44
3:C:81:TYR:CG	3:G:129:LEU:HD12	2.52	0.43
5:I:171:GLU:OE2	5:I:173:THR:OG1	2.31	0.43
5:I:233:VAL:HG13	5:I:242:THR:HG21	2.00	0.43
2:B:161:LEU:HD22	2:B:185:ILE:HG21	2.01	0.43
4:D:209:ARG:NH1	3:G:209:TYR:OH	2.49	0.43
2:F:47:ALA:O	2:F:51:VAL:HG23	2.18	0.43
5:J:158:ARG:O	5:J:161:VAL:HG12	2.18	0.43
1:A:47:VAL:HG12	1:A:65:ALA:O	2.19	0.43
4:D:9:PHE:O	4:D:17:LYS:NZ	2.49	0.43
3:G:221:PHE:N	3:G:256:VAL:O	2.52	0.43
5:I:53:ALA:HB2	5:I:69:LEU:HD21	2.00	0.43

Continued on next page...

Continued from previous page...

Atom-1	Atom-2	Interatomic distance (Å)	Clash overlap (Å)
1:A:46:LEU:HD21	3:C:85:LEU:HD12	1.99	0.43
4:H:141:THR:O	4:H:145:HIS:ND1	2.45	0.43
4:H:239:GLU:N	4:H:239:GLU:OE1	2.52	0.43
5:J:97:ARG:HD2	5:J:100:VAL:HG21	2.00	0.43
1:A:134:VAL:HG12	3:C:117:LEU:HD21	2.02	0.42
1:E:37:GLU:OE2	1:E:73:ARG:NE	2.52	0.42
1:E:85:LEU:HG	3:G:245:VAL:HG23	2.01	0.42
5:J:106:ILE:HG21	5:J:125:ALA:HA	2.02	0.42
1:A:117:ALA:HB3	1:A:118:PRO:HD3	2.00	0.42
3:G:204:LEU:HD12	3:G:283:LYS:HE3	2.01	0.42
4:H:8:ASN:ND2	4:H:12:LEU:O	2.44	0.42
5:J:8:VAL:O	5:J:25:SER:OG	2.15	0.42
1:E:127:ILE:HG23	3:G:100:ARG:HD2	2.02	0.42
2:F:130:LEU:HD23	2:F:130:LEU:H	1.85	0.42
3:G:45:VAL:HG13	3:G:60:ALA:HB3	2.01	0.42
1:A:83:TRP:HB2	3:C:245:VAL:HG12	2.02	0.42
1:A:134:VAL:HG12	3:C:117:LEU:HD11	2.01	0.42
4:D:62:GLU:OE1	4:D:62:GLU:N	2.48	0.42
5:I:56:THR:HG23	5:I:56:THR:O	2.18	0.42
1:A:10:HIS:O	1:A:14:VAL:HG23	2.20	0.42
2:B:176:LEU:HD12	2:B:183:LEU:HD22	2.02	0.42
4:D:103:LEU:HD13	4:D:120:ILE:HB	2.00	0.42
1:E:74:LEU:HD13	1:E:104:GLN:OE1	2.19	0.42
5:I:97:ARG:HD2	5:I:100:VAL:HG21	2.02	0.42
1:E:4:ASP:OD1	1:E:7:THR:OG1	2.37	0.42
5:I:206:LEU:HD12	5:I:206:LEU:N	2.35	0.41
5:I:216:LEU:O	5:I:228:GLY:N	2.48	0.41
1:E:135:ASN:OD1	1:E:138:ARG:NH2	2.53	0.41
4:H:108:HIS:C	4:H:188:ILE:HG22	2.40	0.41
5:I:101:SER:O	5:I:105:ASN:ND2	2.54	0.41
4:D:151:GLY:O	4:D:155:VAL:HG23	2.20	0.41
3:G:335:VAL:HG22	4:H:255:VAL:HG21	2.02	0.41
5:I:111:MET:CG	5:I:121:ILE:HD13	2.51	0.41
5:J:233:VAL:HG13	5:J:242:THR:HG21	2.02	0.41
2:B:125:LEU:HD22	2:B:157:ILE:CD1	2.50	0.41
2:B:168:PHE:CG	2:B:169:PRO:HA	2.55	0.41
5:J:167:VAL:CG1	5:J:199:VAL:HG22	2.51	0.41
5:I:178:VAL:HG13	5:I:179:SER:N	2.36	0.41
5:I:237:PRO:HB3	5:I:242:THR:HG22	2.03	0.41
3:C:225:ILE:HG21	3:C:281:GLU:OE2	2.20	0.41
4:D:70:ASP:OD2	4:D:76:THR:HG21	2.21	0.41

Continued on next page...

Continued from previous page...

Atom-1	Atom-2	Interatomic distance (Å)	Clash overlap (Å)
3:G:223:GLY:HA3	3:G:256:VAL:HG23	2.02	0.41
5:I:37:VAL:HG12	5:I:217:LEU:O	2.21	0.41
1:A:139:VAL:HG22	1:A:140:ASP:N	2.35	0.41
4:H:115:LEU:HD22	4:H:199:MET:SD	2.60	0.41
2:F:106:LEU:C	2:F:106:LEU:HD23	2.42	0.41
3:G:349:GLN:N	3:G:349:GLN:OE1	2.54	0.41
2:B:54:THR:HG23	2:B:55:LEU:HG	2.03	0.40
3:G:85:LEU:O	4:H:40:ARG:NH2	2.54	0.40
5:J:5:LEU:N	5:J:28:LEU:O	2.54	0.40
5:J:37:VAL:HG12	5:J:217:LEU:O	2.20	0.40
3:G:347:LEU:O	3:G:351:LYS:HG2	2.21	0.40
5:J:48:LEU:C	5:J:48:LEU:HD23	2.41	0.40
1:A:145:VAL:HG12	1:A:146:ARG:N	2.37	0.40
2:B:113:THR:HG22	2:B:114:ALA:N	2.37	0.40

There are no symmetry-related clashes.

5.3 Torsion angles [i](#)

5.3.1 Protein backbone [i](#)

In the following table, the Percentiles column shows the percent Ramachandran outliers of the chain as a percentile score with respect to all PDB entries followed by that with respect to all EM entries.

The Analysed column shows the number of residues for which the backbone conformation was analysed, and the total number of residues.

Mol	Chain	Analysed	Favoured	Allowed	Outliers	Percentiles	
1	A	143/150 (95%)	138 (96%)	5 (4%)	0	100	100
1	E	142/150 (95%)	140 (99%)	2 (1%)	0	100	100
2	B	191/194 (98%)	185 (97%)	6 (3%)	0	100	100
2	F	191/194 (98%)	183 (96%)	8 (4%)	0	100	100
3	C	351/354 (99%)	344 (98%)	7 (2%)	0	100	100
3	G	351/354 (99%)	341 (97%)	10 (3%)	0	100	100
4	D	277/281 (99%)	267 (96%)	10 (4%)	0	100	100
4	H	274/281 (98%)	264 (96%)	10 (4%)	0	100	100
5	I	246/291 (84%)	240 (98%)	6 (2%)	0	100	100

Continued on next page...

Continued from previous page...

Mol	Chain	Analysed	Favoured	Allowed	Outliers	Percentiles	
5	J	246/291 (84%)	241 (98%)	5 (2%)	0	100	100
All	All	2412/2540 (95%)	2343 (97%)	69 (3%)	0	100	100

There are no Ramachandran outliers to report.

5.3.2 Protein sidechains [i](#)

In the following table, the Percentiles column shows the percent sidechain outliers of the chain as a percentile score with respect to all PDB entries followed by that with respect to all EM entries.

The Analysed column shows the number of residues for which the sidechain conformation was analysed, and the total number of residues.

Mol	Chain	Analysed	Rotameric	Outliers	Percentiles	
1	A	111/115 (96%)	110 (99%)	1 (1%)	78	90
1	E	111/115 (96%)	110 (99%)	1 (1%)	78	90
2	B	163/164 (99%)	163 (100%)	0	100	100
2	F	163/164 (99%)	163 (100%)	0	100	100
3	C	286/286 (100%)	283 (99%)	3 (1%)	76	89
3	G	286/286 (100%)	279 (98%)	7 (2%)	49	72
4	D	243/244 (100%)	242 (100%)	1 (0%)	91	97
4	H	240/244 (98%)	236 (98%)	4 (2%)	60	79
5	I	209/242 (86%)	207 (99%)	2 (1%)	76	89
5	J	209/242 (86%)	208 (100%)	1 (0%)	88	96
All	All	2021/2102 (96%)	2001 (99%)	20 (1%)	77	89

All (20) residues with a non-rotameric sidechain are listed below:

Mol	Chain	Res	Type
1	A	11	TRP
3	C	319	ASN
3	C	328	HIS
3	C	340	GLU
4	D	75	ASP
1	E	11	TRP
3	G	38	GLU
3	G	76	PHE

Continued on next page...

Continued from previous page...

Mol	Chain	Res	Type
3	G	326	VAL
3	G	329	LEU
3	G	342	GLU
3	G	349	GLN
3	G	352	ASN
4	H	40	ARG
4	H	46	TYR
4	H	108	HIS
4	H	274	GLN
5	I	67	ARG
5	I	142	LEU
5	J	67	ARG

Sometimes sidechains can be flipped to improve hydrogen bonding and reduce clashes. All (1) such sidechains are listed below:

Mol	Chain	Res	Type
3	G	154	HIS

5.3.3 RNA [i](#)

There are no RNA molecules in this entry.

5.4 Non-standard residues in protein, DNA, RNA chains [i](#)

There are no non-standard protein/DNA/RNA residues in this entry.

5.5 Carbohydrates [i](#)

There are no monosaccharides in this entry.

5.6 Ligand geometry [i](#)

Of 5 ligands modelled in this entry, 4 are monoatomic - leaving 1 for Mogul analysis.

In the following table, the Counts columns list the number of bonds (or angles) for which Mogul statistics could be retrieved, the number of bonds (or angles) that are observed in the model and the number of bonds (or angles) that are defined in the Chemical Component Dictionary. The Link column lists molecule types, if any, to which the group is linked. The Z score for a bond length (or angle) is the number of standard deviations the observed value is removed from the

expected value. A bond length (or angle) with $|Z| > 2$ is considered an outlier worth inspection. RMSZ is the root-mean-square of all Z scores of the bond lengths (or angles).

Mol	Type	Chain	Res	Link	Bond lengths			Bond angles		
					Counts	RMSZ	# Z > 2	Counts	RMSZ	# Z > 2
7	I9X	D	1001	6	16,18,18	5.77	8 (50%)	24,29,29	1.10	3 (12%)

In the following table, the Chirals column lists the number of chiral outliers, the number of chiral centers analysed, the number of these observed in the model and the number defined in the Chemical Component Dictionary. Similar counts are reported in the Torsion and Rings columns. '-' means no outliers of that kind were identified.

Mol	Type	Chain	Res	Link	Chirals	Torsions	Rings
7	I9X	D	1001	6	-	3/6/32/32	0/2/2/2

All (8) bond length outliers are listed below:

Mol	Chain	Res	Type	Atoms	Z	Observed(Å)	Ideal(Å)
7	D	1001	I9X	C03-C04	-13.93	1.21	1.52
7	D	1001	I9X	O07-C05	-11.37	1.21	1.46
7	D	1001	I9X	C05-C04	9.49	1.71	1.53
7	D	1001	I9X	C03-C02	7.86	1.73	1.53
7	D	1001	I9X	O06-C05	4.35	1.49	1.41
7	D	1001	I9X	O06-C02	-4.01	1.36	1.45
7	D	1001	I9X	C01-C02	-2.90	1.42	1.51
7	D	1001	I9X	P08-O11	2.07	1.65	1.55

All (3) bond angle outliers are listed below:

Mol	Chain	Res	Type	Atoms	Z	Observed(°)	Ideal(°)
7	D	1001	I9X	O10-P08-O09	-2.44	109.31	115.76
7	D	1001	I9X	O07-P08-O09	-2.29	109.70	115.76
7	D	1001	I9X	C04-C03-C02	2.03	106.41	101.99

There are no chirality outliers.

All (3) torsion outliers are listed below:

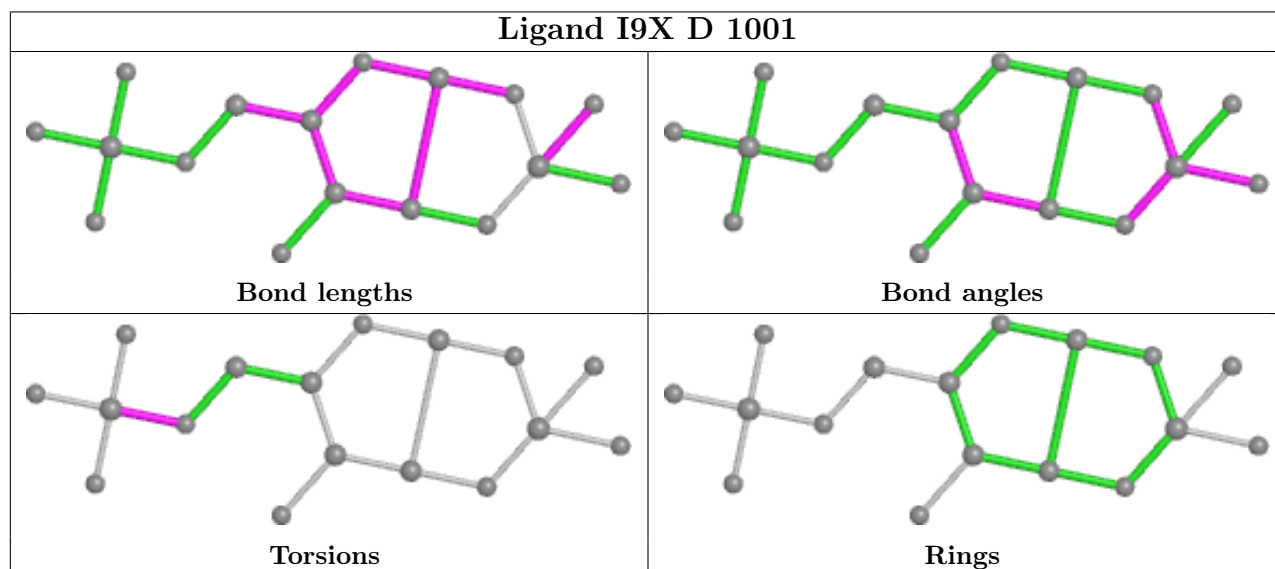
Mol	Chain	Res	Type	Atoms
7	D	1001	I9X	C01-O13-P14-O15
7	D	1001	I9X	C01-O13-P14-O16
7	D	1001	I9X	C01-O13-P14-O17

There are no ring outliers.

1 monomer is involved in 1 short contact:

Mol	Chain	Res	Type	Clashes	Symm-Clashes
7	D	1001	I9X	1	0

The following is a two-dimensional graphical depiction of Mogul quality analysis of bond lengths, bond angles, torsion angles, and ring geometry for all instances of the Ligand of Interest. In addition, ligands with molecular weight > 250 and outliers as shown on the validation Tables will also be included. For torsion angles, if less than 5% of the Mogul distribution of torsion angles is within 10 degrees of the torsion angle in question, then that torsion angle is considered an outlier. Any bond that is central to one or more torsion angles identified as an outlier by Mogul will be highlighted in the graph. For rings, the root-mean-square deviation (RMSD) between the ring in question and similar rings identified by Mogul is calculated over all ring torsion angles. If the average RMSD is greater than 60 degrees and the minimal RMSD between the ring in question and any Mogul-identified rings is also greater than 60 degrees, then that ring is considered an outlier. The outliers are highlighted in purple. The color gray indicates Mogul did not find sufficient equivalents in the CSD to analyse the geometry.



5.7 Other polymers [i](#)

There are no such residues in this entry.

5.8 Polymer linkage issues [i](#)

There are no chain breaks in this entry.

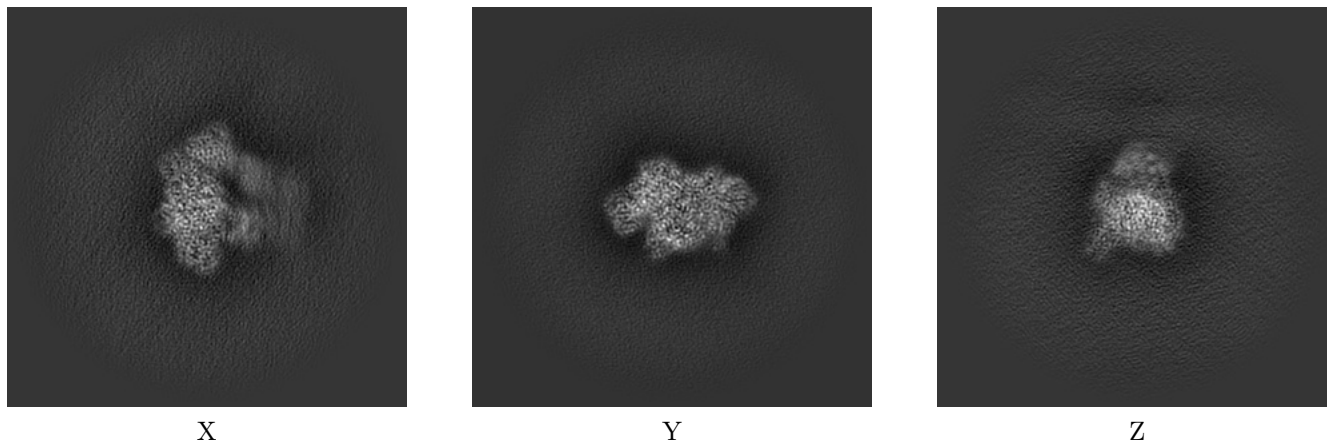
6 Map visualisation [i](#)

This section contains visualisations of the EMDB entry EMD-14443. These allow visual inspection of the internal detail of the map and identification of artifacts.

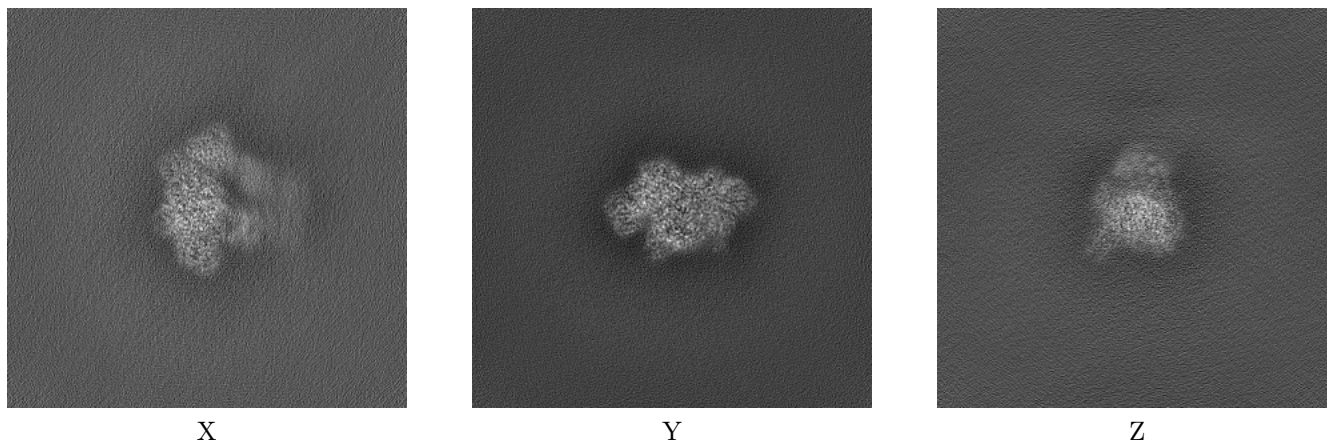
Images derived from a raw map, generated by summing the deposited half-maps, are presented below the corresponding image components of the primary map to allow further visual inspection and comparison with those of the primary map.

6.1 Orthogonal projections [i](#)

6.1.1 Primary map



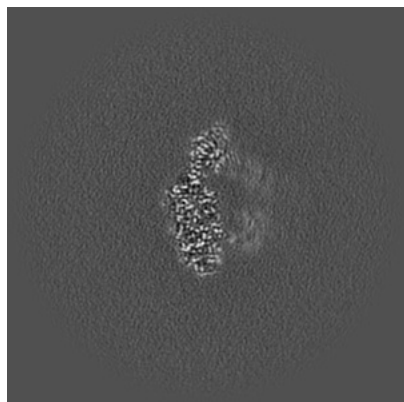
6.1.2 Raw map



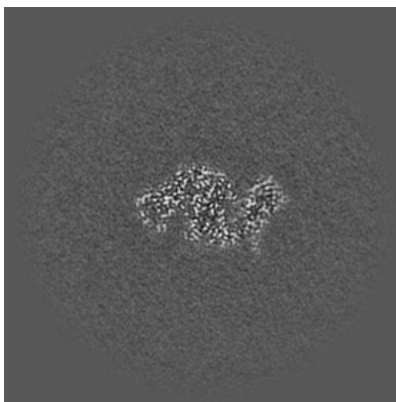
The images above show the map projected in three orthogonal directions.

6.2 Central slices [i](#)

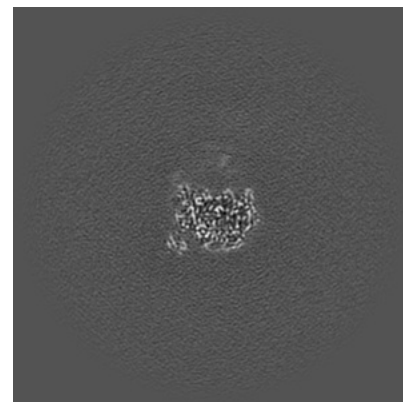
6.2.1 Primary map



X Index: 193

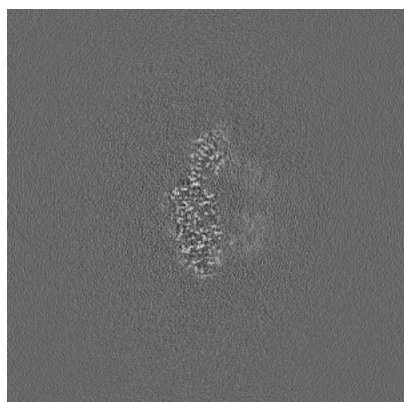


Y Index: 193

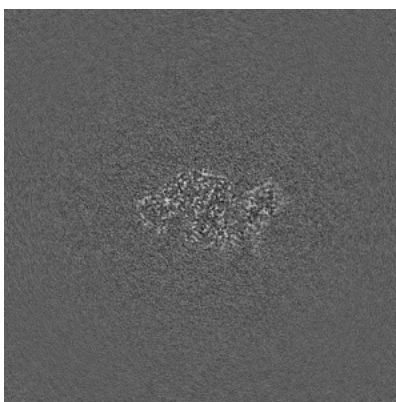


Z Index: 193

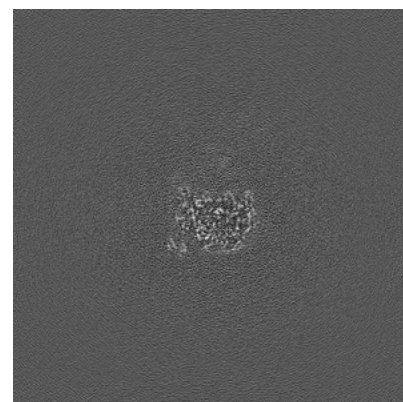
6.2.2 Raw map



X Index: 193



Y Index: 193

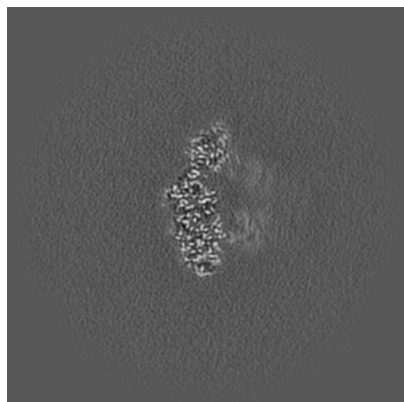


Z Index: 193

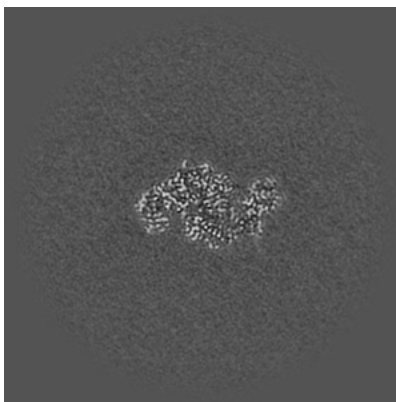
The images above show central slices of the map in three orthogonal directions.

6.3 Largest variance slices [i](#)

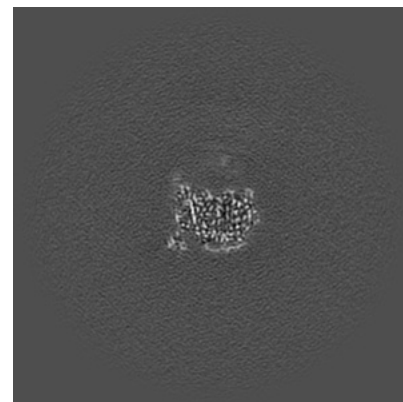
6.3.1 Primary map



X Index: 194

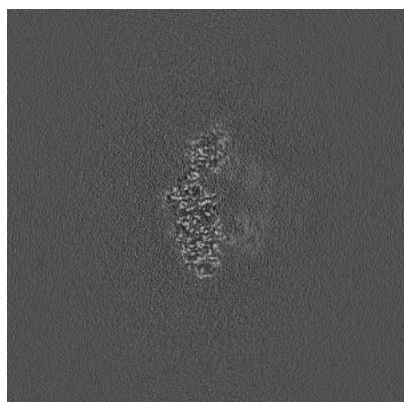


Y Index: 188

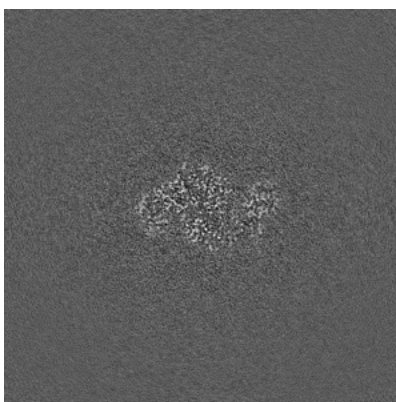


Z Index: 194

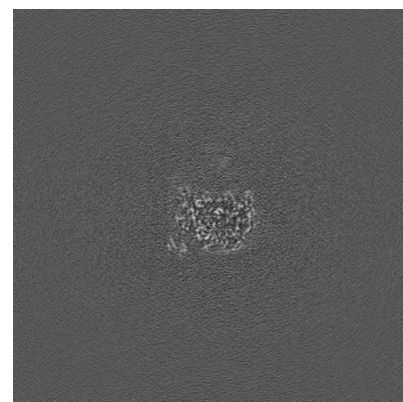
6.3.2 Raw map



X Index: 194



Y Index: 188



Z Index: 193

The images above show the largest variance slices of the map in three orthogonal directions.

6.4 Orthogonal surface views [i](#)

6.4.1 Primary map



X



Y



Z

The images above show the 3D surface view of the map at the recommended contour level 0.135. These images, in conjunction with the slice images, may facilitate assessment of whether an appropriate contour level has been provided.

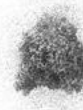
6.4.2 Raw map



X



Y



Z

These images show the 3D surface of the raw map. The raw map's contour level was selected so that its surface encloses the same volume as the primary map does at its recommended contour level.

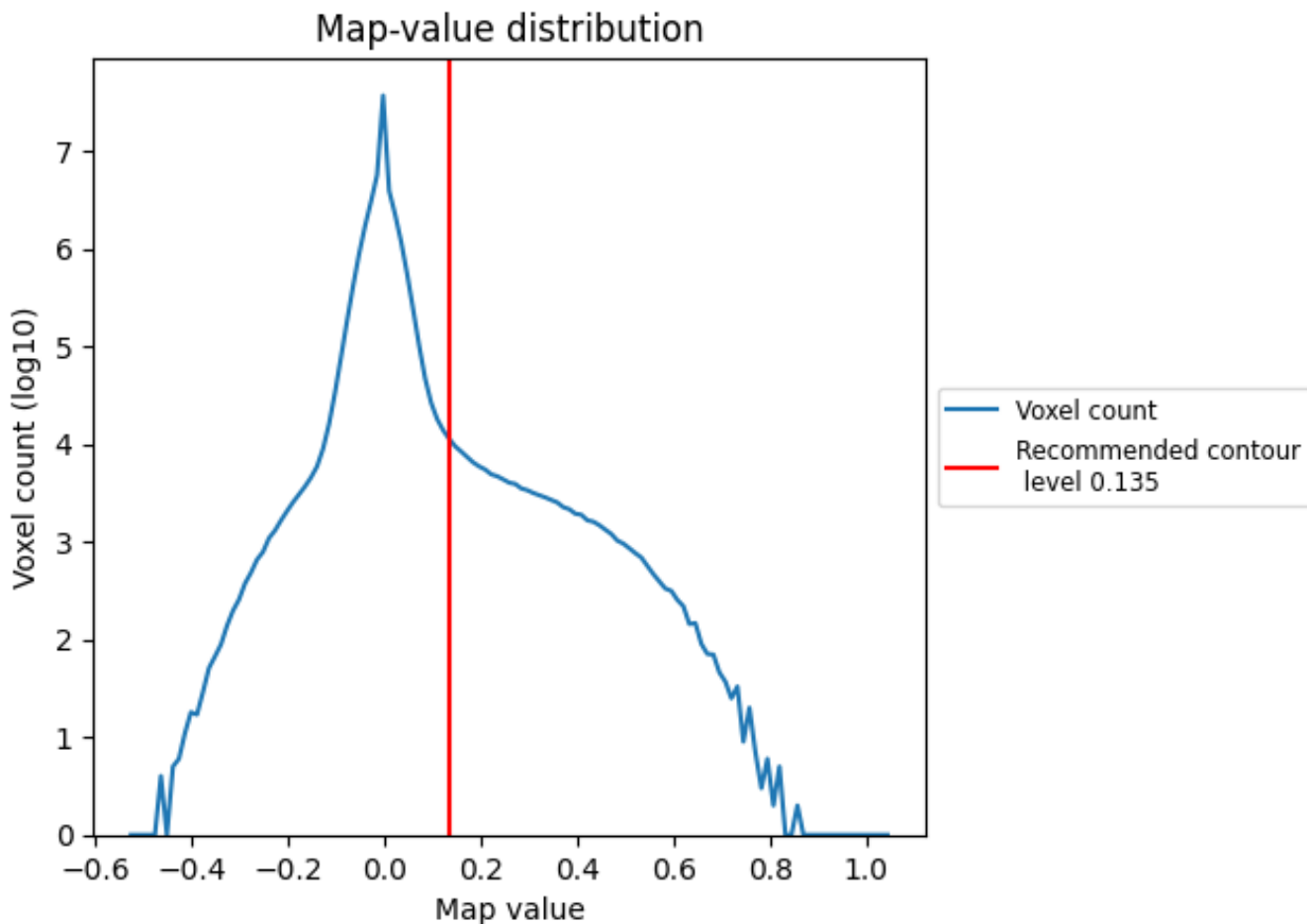
6.5 Mask visualisation [i](#)

This section was not generated. No masks/segmentation were deposited.

7 Map analysis [i](#)

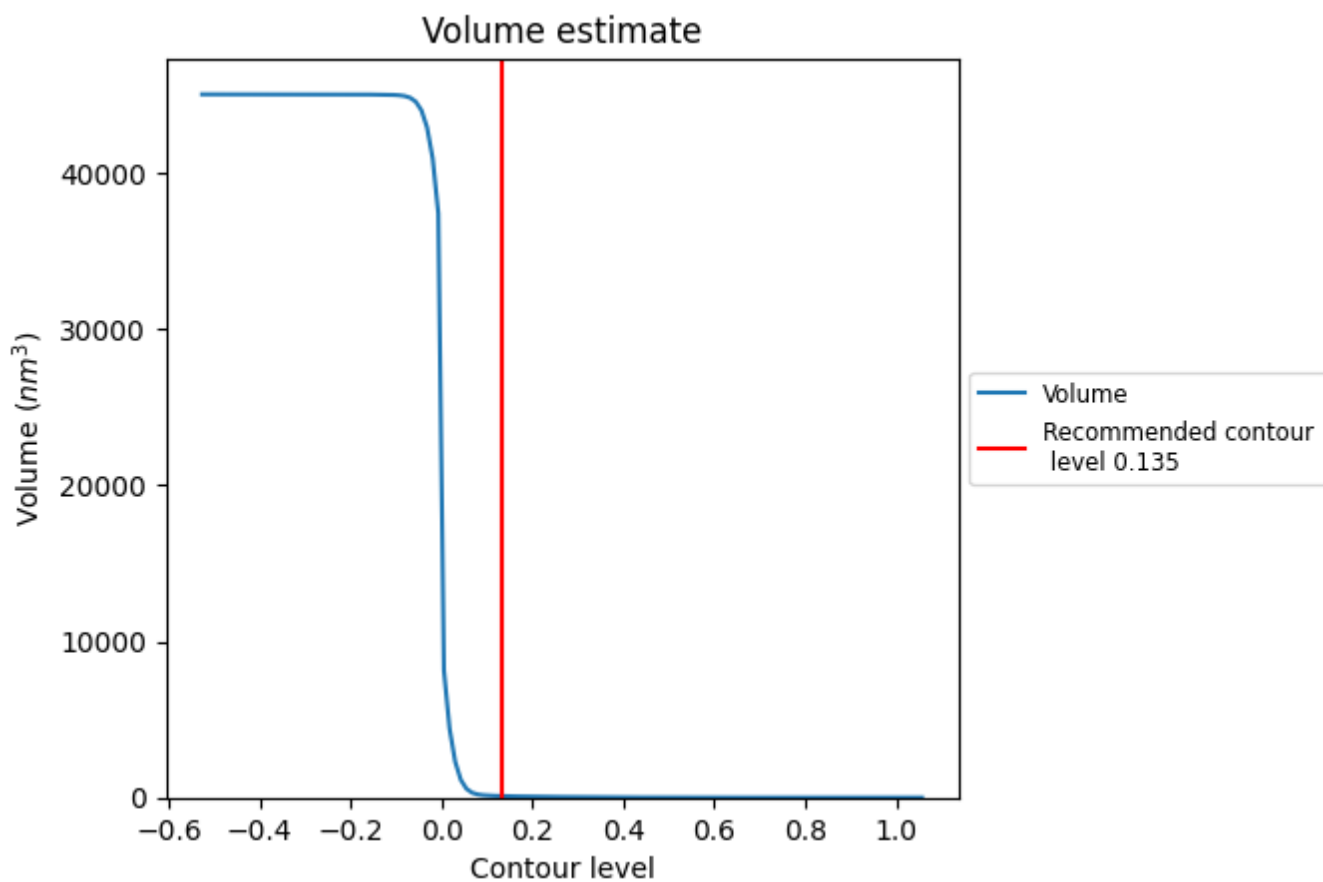
This section contains the results of statistical analysis of the map.

7.1 Map-value distribution [i](#)



The map-value distribution is plotted in 128 intervals along the x-axis. The y-axis is logarithmic. A spike in this graph at zero usually indicates that the volume has been masked.

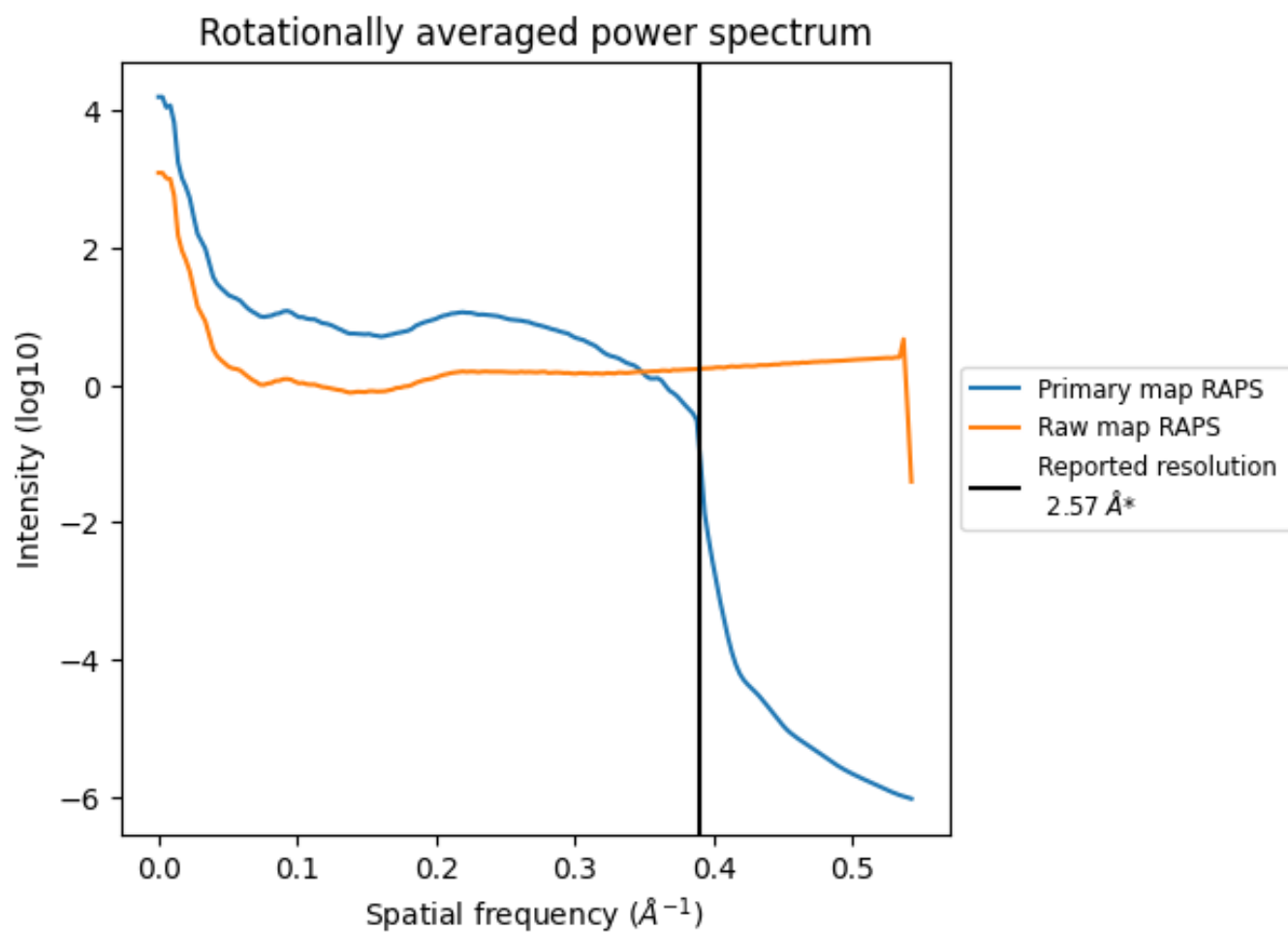
7.2 Volume estimate [i](#)



The volume at the recommended contour level is 94 nm^3 ; this corresponds to an approximate mass of 85 kDa.

The volume estimate graph shows how the enclosed volume varies with the contour level. The recommended contour level is shown as a vertical line and the intersection between the line and the curve gives the volume of the enclosed surface at the given level.

7.3 Rotationally averaged power spectrum i

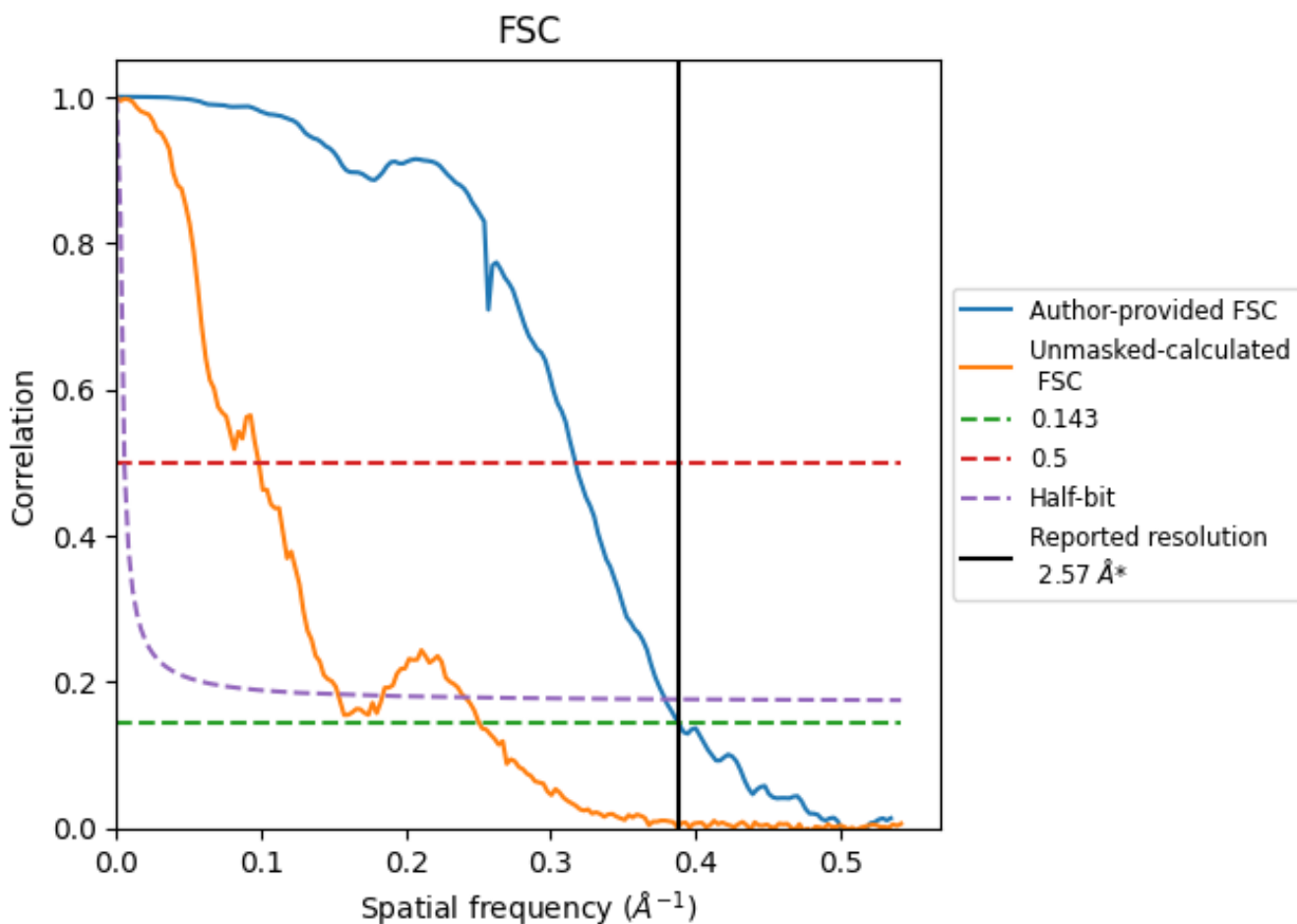


*Reported resolution corresponds to spatial frequency of 0.389 Å⁻¹

8 Fourier-Shell correlation [i](#)

Fourier-Shell Correlation (FSC) is the most commonly used method to estimate the resolution of single-particle and subtomogram-averaged maps. The shape of the curve depends on the imposed symmetry, mask and whether or not the two 3D reconstructions used were processed from a common reference. The reported resolution is shown as a black line. A curve is displayed for the half-bit criterion in addition to lines showing the 0.143 gold standard cut-off and 0.5 cut-off.

8.1 FSC [i](#)



*Reported resolution corresponds to spatial frequency of 0.389 Å⁻¹

8.2 Resolution estimates [i](#)

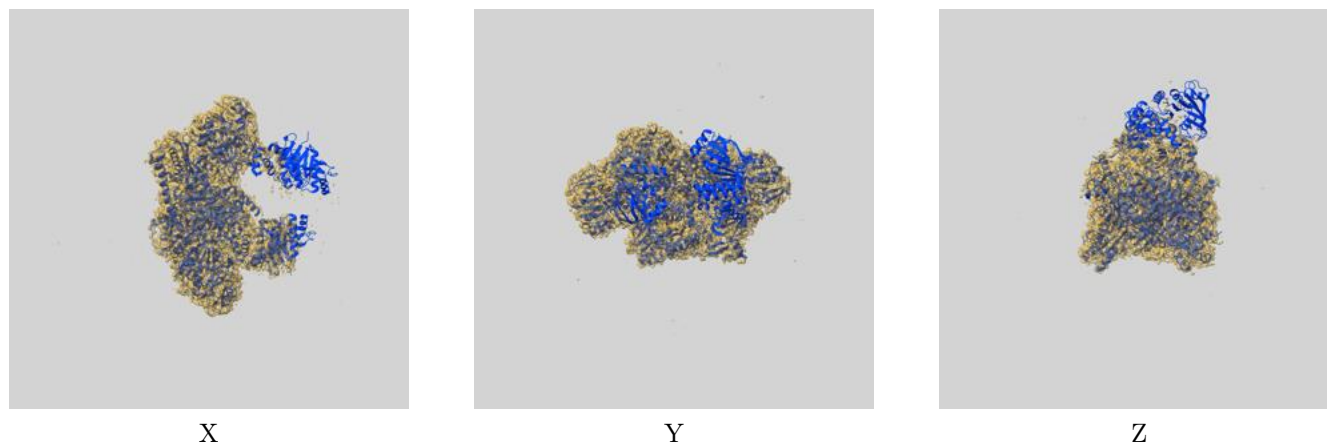
Resolution estimate (Å)	Estimation criterion (FSC cut-off)		
	0.143	0.5	Half-bit
Reported by author	2.57	-	-
Author-provided FSC curve	2.57	3.15	2.64
Unmasked-calculated*	3.99	10.17	6.52

*Resolution estimate based on FSC curve calculated by comparison of deposited half-maps. The value from deposited half-maps intersecting FSC 0.143 CUT-OFF 3.99 differs from the reported value 2.57 by more than 10 %

9 Map-model fit [i](#)

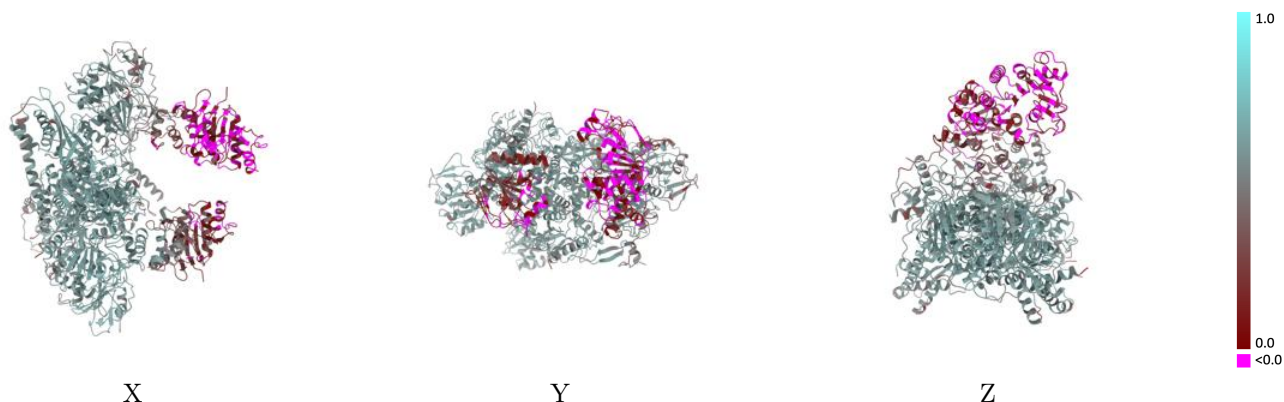
This section contains information regarding the fit between EMDB map EMD-14443 and PDB model 7Z17. Per-residue inclusion information can be found in section 3 on page 9.

9.1 Map-model overlay [i](#)



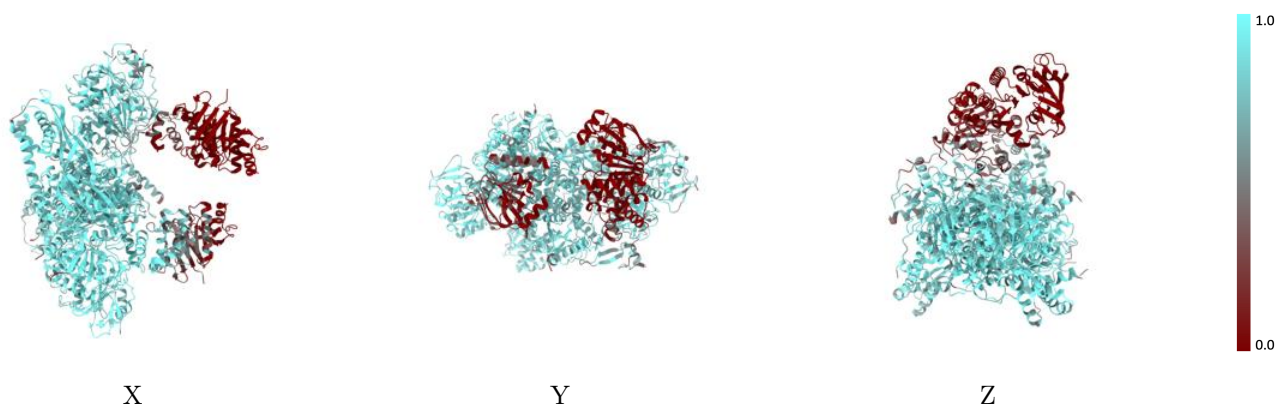
The images above show the 3D surface view of the map at the recommended contour level 0.135 at 50% transparency in yellow overlaid with a ribbon representation of the model coloured in blue. These images allow for the visual assessment of the quality of fit between the atomic model and the map.

9.2 Q-score mapped to coordinate model [\(i\)](#)



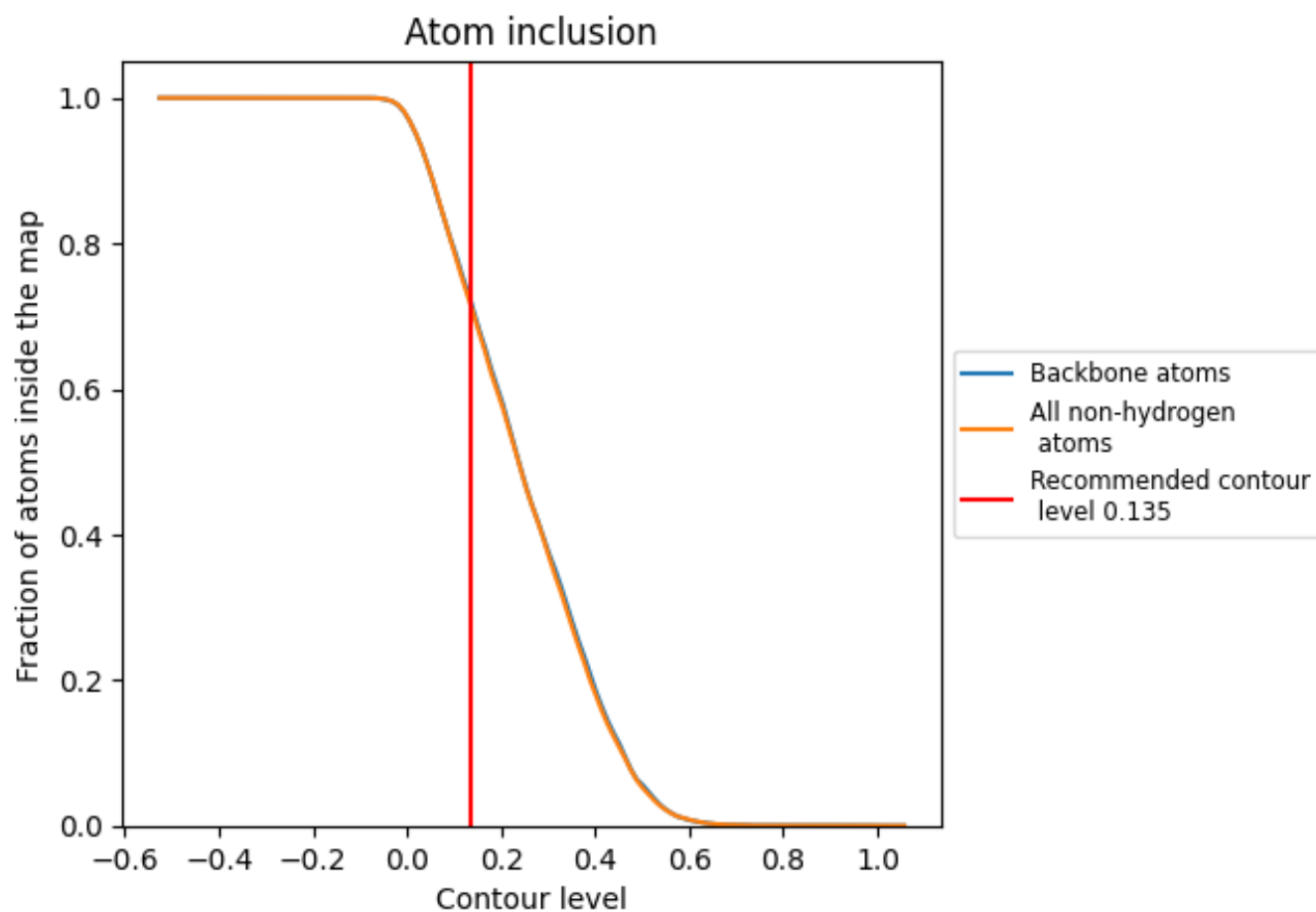
The images above show the model with each residue coloured according to its Q-score. This shows their resolvability in the map with higher Q-score values reflecting better resolvability. Please note: Q-score is calculating the resolvability of atoms, and thus high values are only expected at resolutions at which atoms can be resolved. Low Q-score values may therefore be expected for many entries.

9.3 Atom inclusion mapped to coordinate model [\(i\)](#)



The images above show the model with each residue coloured according to its atom inclusion. This shows to what extent they are inside the map at the recommended contour level (0.135).























9.4 Atom inclusion [i](#)



At the recommended contour level, 72% of all backbone atoms, 72% of all non-hydrogen atoms, are inside the map.

9.5 Map-model fit summary

The table lists the average atom inclusion at the recommended contour level (0.135) and Q-score for the entire model and for each chain.

Chain	Atom inclusion	Q-score
All	 0.7156	 0.4820
A	 0.8498	 0.5550
B	 0.8997	 0.5890
C	 0.8901	 0.5900
D	 0.9059	 0.5940
E	 0.8788	 0.5730
F	 0.8215	 0.5290
G	 0.8979	 0.6020
H	 0.6963	 0.4900
I	 0.3697	 0.2590
J	 0.0101	 0.0240

