



Full wwPDB X-ray Structure Validation Report ⓘ

Aug 16, 2023 – 07:07 AM EDT

PDB ID : 1Z5L
Title : Structure of a highly potent short-chain galactosyl ceramide agonist bound to CD1D
Authors : Zajonc, D.M.; Cantu, C.; Mattner, J.; Zhou, D.; Savage, P.B.; Bendelac, A.; Wilson, I.A.; Teyton, L.
Deposited on : 2005-03-18
Resolution : 2.20 Å(reported)

This is a Full wwPDB X-ray Structure Validation Report for a publicly released PDB entry.

We welcome your comments at validation@mail.wwpdb.org

A user guide is available at

<https://www.wwpdb.org/validation/2017/XrayValidationReportHelp>

with specific help available everywhere you see the ⓘ symbol.

The types of validation reports are described at

<http://www.wwpdb.org/validation/2017/FAQs#types>.

The following versions of software and data (see [references ⓘ](#)) were used in the production of this report:

MolProbity : 4.02b-467
Mogul : 1.8.5 (274361), CSD as541be (2020)
Xtriage (Phenix) : 1.13
EDS : 2.35
buster-report : 1.1.7 (2018)
Percentile statistics : 20191225.v01 (using entries in the PDB archive December 25th 2019)
Refmac : 5.8.0158
CCP4 : 7.0.044 (Gargrove)
Ideal geometry (proteins) : Engh & Huber (2001)
Ideal geometry (DNA, RNA) : Parkinson et al. (1996)
Validation Pipeline (wwPDB-VP) : 2.35

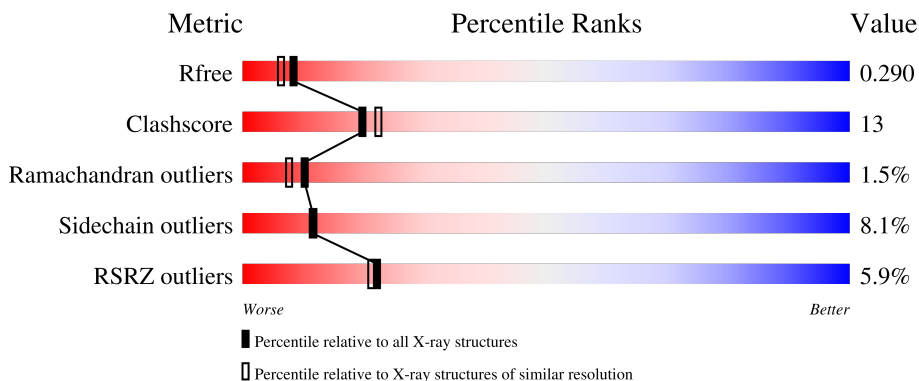
1 Overall quality at a glance i

The following experimental techniques were used to determine the structure:

X-RAY DIFFRACTION

The reported resolution of this entry is 2.20 Å.

Percentile scores (ranging between 0-100) for global validation metrics of the entry are shown in the following graphic. The table shows the number of entries on which the scores are based.




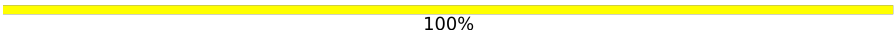
Metric	Whole archive (#Entries)	Similar resolution (#Entries, resolution range(Å))
R_{free}	130704	4898 (2.20-2.20)
Clashscore	141614	5594 (2.20-2.20)
Ramachandran outliers	138981	5503 (2.20-2.20)
Sidechain outliers	138945	5504 (2.20-2.20)
RSRZ outliers	127900	4800 (2.20-2.20)

The table below summarises the geometric issues observed across the polymeric chains and their fit to the electron density. The red, orange, yellow and green segments of the lower bar indicate the fraction of residues that contain outliers for ≥ 3 , 2, 1 and 0 types of geometric quality criteria respectively. A grey segment represents the fraction of residues that are not modelled. The numeric value for each fraction is indicated below the corresponding segment, with a dot representing fractions $\leq 5\%$. The upper red bar (where present) indicates the fraction of residues that have poor fit to the electron density. The numeric value is given above the bar.

Mol	Chain	Length	Quality of chain
1	A	285	<div style="display: flex; align-items: center;"> <div style="width: 7%; height: 10px; background-color: red; margin-right: 5px;"></div> <div style="width: 62%; height: 10px; background-color: green; margin-right: 5px;"></div> <div style="width: 26%; height: 10px; background-color: yellow; margin-right: 5px;"></div> <div style="width: 7%; height: 10px; background-color: orange; margin-right: 5px;"></div> <div style="width: 7%; height: 10px; background-color: grey;"></div> </div> <p style="text-align: center;">62% 26% . . 7%</p>
1	C	285	<div style="display: flex; align-items: center;"> <div style="width: 6%; height: 10px; background-color: red; margin-right: 5px;"></div> <div style="width: 62%; height: 10px; background-color: green; margin-right: 5px;"></div> <div style="width: 25%; height: 10px; background-color: yellow; margin-right: 5px;"></div> <div style="width: 5%; height: 10px; background-color: orange; margin-right: 5px;"></div> <div style="width: 7%; height: 10px; background-color: grey;"></div> </div> <p style="text-align: center;">62% 25% 5% . 7%</p>
2	B	99	<div style="display: flex; align-items: center;"> <div style="width: 3%; height: 10px; background-color: red; margin-right: 5px;"></div> <div style="width: 73%; height: 10px; background-color: green; margin-right: 5px;"></div> <div style="width: 20%; height: 10px; background-color: yellow; margin-right: 5px;"></div> <div style="width: 6%; height: 10px; background-color: orange; margin-right: 5px;"></div> <div style="width: 8%; height: 10px; background-color: grey;"></div> </div> <p style="text-align: center;">73% 20% 6% .</p>
2	D	99	<div style="display: flex; align-items: center;"> <div style="width: 3%; height: 10px; background-color: red; margin-right: 5px;"></div> <div style="width: 60%; height: 10px; background-color: green; margin-right: 5px;"></div> <div style="width: 30%; height: 10px; background-color: yellow; margin-right: 5px;"></div> <div style="width: 8%; height: 10px; background-color: orange; margin-right: 5px;"></div> <div style="width: 9%; height: 10px; background-color: grey;"></div> </div> <p style="text-align: center;">60% 30% 8% ..</p>

Continued on next page...

Continued from previous page...

Mol	Chain	Length	Quality of chain
3	E	2	 50% 50%
3	F	2	 100%

2 Entry composition i

There are 7 unique types of molecules in this entry. The entry contains 6290 atoms, of which 0 are hydrogens and 0 are deuteriums.

In the tables below, the ZeroOcc column contains the number of atoms modelled with zero occupancy, the AltConf column contains the number of residues with at least one atom in alternate conformation and the Trace column contains the number of residues modelled with at most 2 atoms.

- Molecule 1 is a protein called T-cell surface glycoprotein CD1d antigen.

Mol	Chain	Residues	Atoms					ZeroOcc	AltConf	Trace
			Total	C	N	O	S			
1	A	265	2140	1368	366	393	13	42	0	0
1	C	266	2151	1373	370	395	13	66	0	0

There are 12 discrepancies between the modelled and reference sequences:

Chain	Residue	Modelled	Actual	Comment	Reference
A	280	HIS	-	expression tag	GB 50333
A	281	HIS	-	expression tag	GB 50333
A	282	HIS	-	expression tag	GB 50333
A	283	HIS	-	expression tag	GB 50333
A	284	HIS	-	expression tag	GB 50333
A	285	HIS	-	expression tag	GB 50333
C	280	HIS	-	expression tag	GB 50333
C	281	HIS	-	expression tag	GB 50333
C	282	HIS	-	expression tag	GB 50333
C	283	HIS	-	expression tag	GB 50333
C	284	HIS	-	expression tag	GB 50333
C	285	HIS	-	expression tag	GB 50333

- Molecule 2 is a protein called Beta-2-microglobulin.

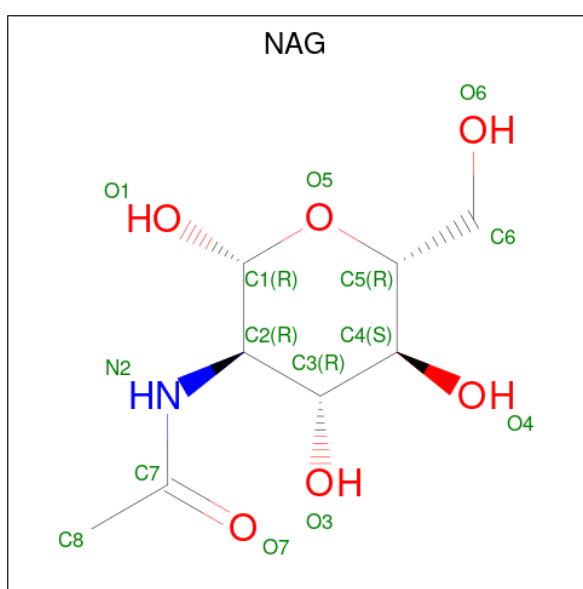
Mol	Chain	Residues	Atoms					ZeroOcc	AltConf	Trace
			Total	C	N	O	S			
2	B	98	810	517	137	149	7	37	0	0
2	D	98	810	517	137	149	7	37	0	0

- Molecule 3 is an oligosaccharide called 2-acetamido-2-deoxy-beta-D-glucopyranose-(1-4)-2-acetamido-2-deoxy-beta-D-glucopyranose.



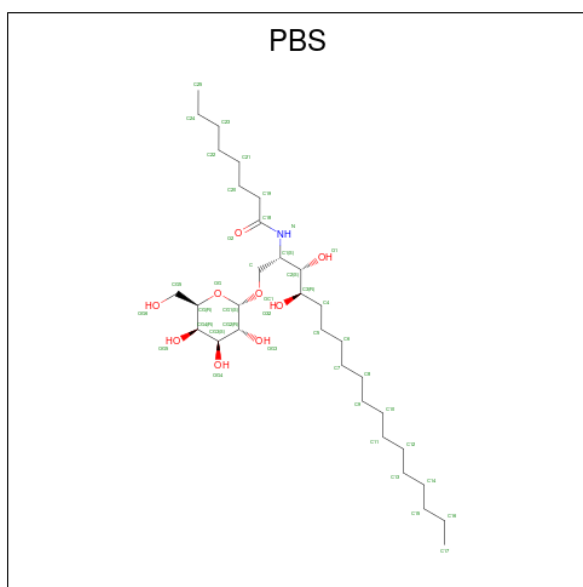
Mol	Chain	Residues	Atoms				ZeroOcc	AltConf	Trace
			Total	C	N	O			
3	E	2	28	16	2	10	0	0	0
3	F	2	28	16	2	10	0	0	0

- Molecule 4 is 2-acetamido-2-deoxy-beta-D-glucopyranose (three-letter code: NAG) (formula: $C_8H_{15}NO_6$).



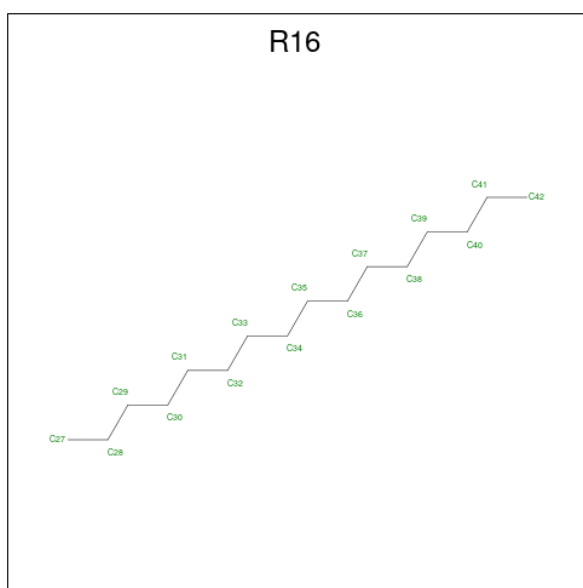
Mol	Chain	Residues	Atoms				ZeroOcc	AltConf
			Total	C	N	O		
4	A	1	14	8	1	5	0	0
4	A	1	14	8	1	5	0	0
4	C	1	14	8	1	5	0	0

- Molecule 5 is (2S,3S,4R)-N-OCTANOYL-1-[(ALPHA-D-GALACTOPYRANOSYL)OXY]-2-AMINO-OCTADECANE-3,4-DIOL (three-letter code: PBS) (formula: $C_{32}H_{63}NO_9$).



Mol	Chain	Residues	Atoms			ZeroOcc	AltConf	
5	A	1	Total	C	N	O	0	0
			42	32	1	9		
5	C	1	Total	C	N	O	0	0
			42	32	1	9		

- Molecule 6 is HEXADECANE (three-letter code: R16) (formula: $C_{16}H_{34}$).



Mol	Chain	Residues	Atoms		ZeroOcc	AltConf
6	A	1	Total	C	0	0
			16	16		
6	C	1	Total	C	0	0
			16	16		

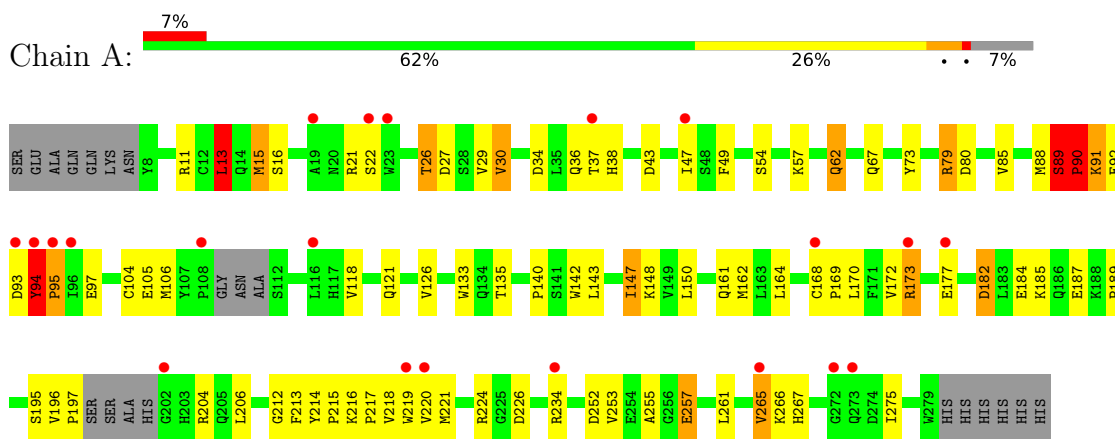
- Molecule 7 is water.

Mol	Chain	Residues	Atoms	ZeroOcc	AltConf
7	A	50	Total O 50 50	0	0
7	B	24	Total O 24 24	0	0
7	C	66	Total O 66 66	0	0
7	D	25	Total O 25 25	0	0

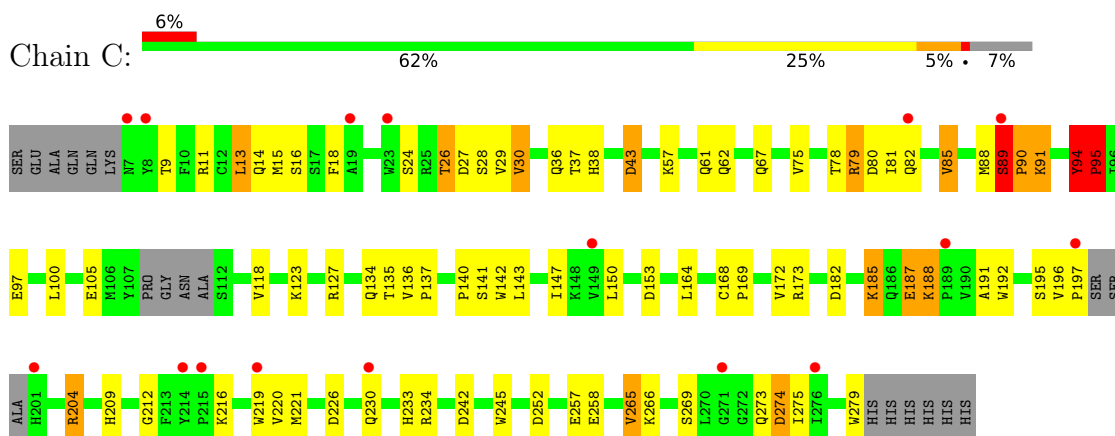
3 Residue-property plots [i](#)

These plots are drawn for all protein, RNA, DNA and oligosaccharide chains in the entry. The first graphic for a chain summarises the proportions of the various outlier classes displayed in the second graphic. The second graphic shows the sequence view annotated by issues in geometry and electron density. Residues are color-coded according to the number of geometric quality criteria for which they contain at least one outlier: green = 0, yellow = 1, orange = 2 and red = 3 or more. A red dot above a residue indicates a poor fit to the electron density ($RSRZ > 2$). Stretches of 2 or more consecutive residues without any outlier are shown as a green connector. Residues present in the sample, but not in the model, are shown in grey.

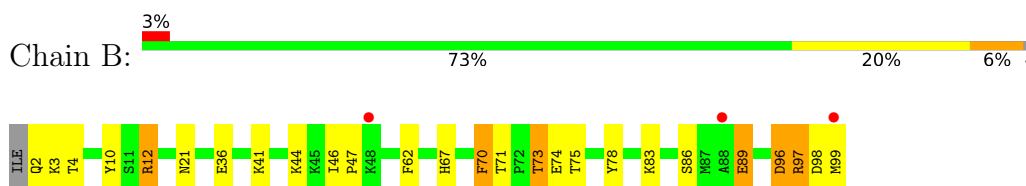
- Molecule 1: T-cell surface glycoprotein CD1d antigen



- Molecule 1: T-cell surface glycoprotein CD1d antigen



- Molecule 2: Beta-2-microglobulin



- Molecule 2: Beta-2-microglobulin



- Molecule 3: 2-acetamido-2-deoxy-beta-D-glucopyranose-(1-4)-2-acetamido-2-deoxy-beta-D-glucopyranose



- Molecule 3: 2-acetamido-2-deoxy-beta-D-glucopyranose-(1-4)-2-acetamido-2-deoxy-beta-D-glucopyranose



4 Data and refinement statistics i

Property	Value	Source
Space group	P 1 21 1	Depositor
Cell constants a, b, c, α , β , γ	59.45Å 77.05Å 111.01Å 90.00° 107.63° 90.00°	Depositor
Resolution (Å)	39.68 – 2.20 39.68 – 2.20	Depositor EDS
% Data completeness (in resolution range)	93.7 (39.68-2.20) 93.7 (39.68-2.20)	Depositor EDS
R_{merge}	(Not available)	Depositor
R_{sym}	0.07	Depositor
$\langle I/\sigma(I) \rangle$ ¹	2.80 (at 2.20Å)	Xtrriage
Refinement program	REFMAC 5.2.0003	Depositor
R, R_{free}	0.242 , 0.294 0.241 , 0.290	Depositor DCC
R_{free} test set	1414 reflections (3.11%)	wwPDB-VP
Wilson B-factor (Å ²)	49.2	Xtrriage
Anisotropy	0.107	Xtrriage
Bulk solvent k_{sol} (e/Å ³), B_{sol} (Å ²)	0.34 , 63.0	EDS
L-test for twinning ²	$\langle L \rangle = 0.54$, $\langle L^2 \rangle = 0.37$	Xtrriage
Estimated twinning fraction	0.000 for h,-k,-h-l	Xtrriage
F_o, F_c correlation	0.94	EDS
Total number of atoms	6290	wwPDB-VP
Average B, all atoms (Å ²)	72.0	wwPDB-VP

Xtrriage's analysis on translational NCS is as follows: *The analyses of the Patterson function reveals a significant off-origin peak that is 48.60 % of the origin peak, indicating pseudo-translational symmetry. The chance of finding a peak of this or larger height randomly in a structure without pseudo-translational symmetry is equal to 8.4033e-05. The detected translational NCS is most likely also responsible for the elevated intensity ratio.*

¹Intensities estimated from amplitudes.

²Theoretical values of $\langle |L| \rangle$, $\langle L^2 \rangle$ for acentric reflections are 0.5, 0.333 respectively for untwinned datasets, and 0.375, 0.2 for perfectly twinned datasets.

5 Model quality [i](#)

5.1 Standard geometry [i](#)

Bond lengths and bond angles in the following residue types are not validated in this section: PBS, NAG, R16

The Z score for a bond length (or angle) is the number of standard deviations the observed value is removed from the expected value. A bond length (or angle) with $|Z| > 5$ is considered an outlier worth inspection. RMSZ is the root-mean-square of all Z scores of the bond lengths (or angles).

Mol	Chain	Bond lengths		Bond angles	
		RMSZ	# $ Z > 5$	RMSZ	# $ Z > 5$
1	A	0.97	5/2202 (0.2%)	1.07	15/2991 (0.5%)
1	C	1.02	7/2213 (0.3%)	1.03	12/3005 (0.4%)
2	B	1.06	3/836 (0.4%)	1.04	2/1133 (0.2%)
2	D	0.88	4/836 (0.5%)	1.03	7/1133 (0.6%)
All	All	0.99	19/6087 (0.3%)	1.05	36/8262 (0.4%)

Chiral center outliers are detected by calculating the chiral volume of a chiral center and verifying if the center is modelled as a planar moiety or with the opposite hand. A planarity outlier is detected by checking planarity of atoms in a peptide group, atoms in a mainchain group or atoms of a sidechain that are expected to be planar.

Mol	Chain	#Chirality outliers	#Planarity outliers
1	A	0	1
1	C	0	1
All	All	0	2

All (19) bond length outliers are listed below:

Mol	Chain	Res	Type	Atoms	Z	Observed(Å)	Ideal(Å)
1	C	91	LYS	CA-CB	-23.40	1.02	1.53
1	C	273	GLN	CA-CB	-19.75	1.10	1.53
1	A	184	GLU	CA-CB	-17.88	1.14	1.53
2	B	3	LYS	CA-CB	-16.09	1.18	1.53
1	A	62	GLN	CA-CB	-14.99	1.21	1.53
1	A	255	ALA	CA-CB	-11.78	1.27	1.52
1	C	257	GLU	CA-CB	-10.58	1.30	1.53
2	D	48	LYS	CA-CB	-10.38	1.31	1.53
1	C	173	ARG	CA-CB	-10.15	1.31	1.53
1	A	105	GLU	CA-CB	-9.81	1.32	1.53
2	B	89	GLU	CA-CB	8.53	1.72	1.53
2	B	83	LYS	CA-CB	-8.50	1.35	1.53

Continued on next page...

Continued from previous page...

Mol	Chain	Res	Type	Atoms	Z	Observed(Å)	Ideal(Å)
1	C	79	ARG	CA-CB	-7.43	1.37	1.53
2	D	58	LYS	CA-CB	-7.41	1.37	1.53
2	D	16	GLU	CA-CB	7.25	1.69	1.53
1	A	257	GLU	CA-CB	-6.71	1.39	1.53
1	C	61	GLN	CA-CB	6.27	1.67	1.53
1	C	188	LYS	CA-CB	-6.08	1.40	1.53
2	D	19	LYS	CA-CB	5.73	1.66	1.53

All (36) bond angle outliers are listed below:

Mol	Chain	Res	Type	Atoms	Z	Observed(°)	Ideal(°)
1	A	184	GLU	CB-CA-C	11.76	133.93	110.40
1	C	62	GLN	N-CA-CB	11.72	131.69	110.60
1	C	79	ARG	N-CA-CB	11.71	131.67	110.60
1	A	257	GLU	N-CA-CB	10.91	130.24	110.60
2	D	3	LYS	N-CA-CB	-10.15	92.33	110.60
1	C	257	GLU	CB-CA-C	9.28	128.96	110.40
1	A	62	GLN	CB-CA-C	8.04	126.49	110.40
2	D	48	LYS	N-CA-CB	7.17	123.51	110.60
1	A	252	ASP	CB-CG-OD2	7.12	124.71	118.30
2	B	3	LYS	CB-CA-C	6.76	123.92	110.40
1	A	184	GLU	CA-CB-CG	6.57	127.85	113.40
1	C	43	ASP	CB-CG-OD2	6.42	124.08	118.30
1	C	153	ASP	CB-CG-OD2	6.37	124.03	118.30
2	B	96	ASP	CB-CG-OD2	6.29	123.96	118.30
1	A	105	GLU	N-CA-CB	6.24	121.83	110.60
1	A	62	GLN	N-CA-CB	6.19	121.75	110.60
2	D	96	ASP	CB-CG-OD2	6.03	123.73	118.30
1	C	150	LEU	CA-CB-CG	5.97	129.03	115.30
1	A	255	ALA	N-CA-CB	5.91	118.38	110.10
2	D	59	ASP	CB-CG-OD2	5.89	123.60	118.30
1	A	150	LEU	CA-CB-CG	5.87	128.79	115.30
1	C	95	PRO	N-CD-CG	-5.83	94.45	103.20
2	D	89	GLU	N-CA-CB	-5.80	100.17	110.60
1	A	27	ASP	CB-CG-OD2	5.74	123.47	118.30
1	A	62	GLN	CA-CB-CG	5.73	126.01	113.40
1	A	34	ASP	CB-CG-OD2	5.65	123.38	118.30
1	A	21	ARG	CA-CB-CG	-5.41	101.50	113.40
1	C	80	ASP	CB-CG-OD2	5.37	123.13	118.30
1	C	226	ASP	CB-CG-OD2	5.35	123.12	118.30
1	A	13	LEU	CB-CG-CD1	5.35	120.09	111.00
2	D	98	ASP	CB-CG-OD2	5.19	122.97	118.30

Continued on next page...

Continued from previous page...

Mol	Chain	Res	Type	Atoms	Z	Observed(°)	Ideal(°)
1	C	173	ARG	CB-CA-C	5.17	120.75	110.40
1	C	273	GLN	CB-CA-C	5.16	120.71	110.40
2	D	76	ASP	CB-CG-OD2	5.15	122.93	118.30
1	C	27	ASP	CB-CG-OD2	5.14	122.93	118.30
1	A	226	ASP	CB-CG-OD2	5.10	122.89	118.30

There are no chirality outliers.

All (2) planarity outliers are listed below:

Mol	Chain	Res	Type	Group
1	A	94	TYR	Peptide
1	C	94	TYR	Peptide

5.2 Too-close contacts

In the following table, the Non-H and H(model) columns list the number of non-hydrogen atoms and hydrogen atoms in the chain respectively. The H(added) column lists the number of hydrogen atoms added and optimized by MolProbity. The Clashes column lists the number of clashes within the asymmetric unit, whereas Symm-Clashes lists symmetry-related clashes.

Mol	Chain	Non-H	H(model)	H(added)	Clashes	Symm-Clashes
1	A	2140	0	2050	58	1
1	C	2151	0	2057	56	0
2	B	810	0	783	15	1
2	D	810	0	783	31	0
3	E	28	0	25	1	0
3	F	28	0	25	0	0
4	A	28	0	26	0	0
4	C	14	0	13	0	0
5	A	42	0	63	2	0
5	C	42	0	63	0	0
6	A	16	0	34	0	0
6	C	16	0	34	2	0
7	A	50	0	0	2	0
7	B	24	0	0	1	0
7	C	66	0	0	3	0
7	D	25	0	0	0	0
All	All	6290	0	5956	148	1

The all-atom clashscore is defined as the number of clashes found per 1000 atoms (including hydrogen atoms). The all-atom clashscore for this structure is 13.

All (148) close contacts within the same asymmetric unit are listed below, sorted by their clash magnitude.

Atom-1	Atom-2	Interatomic distance (Å)	Clash overlap (Å)
1:C:30:VAL:HG13	1:C:38:HIS:HB2	1.15	1.09
1:A:89:SER:HB3	1:A:90:PRO:HD2	1.39	1.00
1:A:182:ASP:O	1:A:185:LYS:HG2	1.64	0.96
2:D:73:THR:HG22	2:D:75:THR:H	1.30	0.94
2:B:73:THR:HG22	2:B:75:THR:H	1.29	0.94
1:C:30:VAL:CG1	1:C:38:HIS:HB2	1.99	0.93
2:B:96:ASP:O	2:B:98:ASP:N	2.05	0.89
1:A:16:SER:OG	1:A:26:THR:HB	1.74	0.88
1:A:213:PHE:CE2	1:A:218:VAL:HG21	2.09	0.88
1:A:89:SER:HB3	1:A:90:PRO:CD	2.08	0.82
1:C:89:SER:HB3	1:C:90:PRO:HD2	1.68	0.76
1:A:265:VAL:HG13	1:A:275:ILE:HB	1.69	0.74
1:A:15:MET:HG2	2:B:62:PHE:HE2	1.54	0.71
1:A:213:PHE:CD2	1:A:218:VAL:HG21	2.24	0.71
1:C:266:LYS:HG2	1:C:274:ASP:OD2	1.89	0.71
1:A:168:CYS:HB3	1:A:169:PRO:HD3	1.72	0.70
1:A:218:VAL:HG22	1:A:267:HIS:HD2	1.54	0.70
1:C:29:VAL:HG23	1:C:36:GLN:NE2	2.07	0.69
1:A:216:LYS:O	1:A:218:VAL:HG23	1.95	0.66
1:C:89:SER:O	1:C:90:PRO:C	2.32	0.66
1:C:233:HIS:HB3	7:C:717:HOH:O	1.96	0.65
2:D:96:ASP:O	2:D:98:ASP:N	2.22	0.64
1:C:97:GLU:HG3	7:C:746:HOH:O	1.96	0.64
2:B:2:GLN:HG2	2:B:86:SER:HB3	1.81	0.63
2:D:24:ASN:HB3	2:D:65:LEU:HD11	1.80	0.62
1:A:94:TYR:O	1:A:95:PRO:O	2.18	0.61
1:A:195:SER:OG	1:A:204:ARG:NH2	2.34	0.61
1:A:30:VAL:HG13	1:A:38:HIS:HB2	1.81	0.60
1:C:89:SER:CB	1:C:90:PRO:HD2	2.32	0.60
1:C:168:CYS:HB3	1:C:169:PRO:HD3	1.84	0.60
1:C:258:GLU:HB3	1:C:279:TRP:CD1	2.36	0.60
1:A:218:VAL:HG22	1:A:267:HIS:CD2	2.37	0.59
2:D:17:ASN:HA	2:D:72:PRO:O	2.02	0.59
2:B:10:TYR:HB3	2:B:99:MET:HG2	1.83	0.59
1:C:30:VAL:HG13	1:C:38:HIS:CB	2.10	0.58
1:C:212:GLY:HA3	2:D:12:ARG:NH2	2.20	0.57
1:A:140:PRO:HD2	1:A:143:LEU:HD12	1.87	0.56
1:A:161:GLN:HB3	3:E:1:NAG:H82	1.87	0.56
2:B:96:ASP:C	2:B:98:ASP:H	2.02	0.56
1:C:187:GLU:HA	1:C:187:GLU:OE2	2.05	0.56

Continued on next page...

Continued from previous page...

Atom-1	Atom-2	Interatomic distance (Å)	Clash overlap (Å)
2:B:67:HIS:HE1	7:B:112:HOH:O	1.87	0.56
1:C:88:MET:HA	1:C:142:TRP:CE3	2.41	0.56
1:A:106:MET:HG3	1:A:172:VAL:HG11	1.88	0.55
1:C:242:ASP:OD2	2:D:12:ARG:NH1	2.39	0.55
1:C:94:TYR:O	1:C:95:PRO:O	2.25	0.55
1:A:89:SER:O	1:A:90:PRO:C	2.46	0.55
2:D:73:THR:HG22	2:D:75:THR:N	2.10	0.54
1:A:49:PHE:HB3	1:A:54:SER:HB2	1.89	0.54
1:A:213:PHE:CE2	1:A:218:VAL:CG2	2.88	0.54
1:A:30:VAL:HG22	1:A:37:THR:OG1	2.08	0.53
1:C:100:LEU:HG	1:C:118:VAL:HG22	1.90	0.53
2:B:74:GLU:H	2:B:74:GLU:CD	2.12	0.53
1:A:57:LYS:NZ	1:C:230:GLN:OE1	2.25	0.53
1:C:123:LYS:HD2	7:C:768:HOH:O	2.08	0.53
2:D:11:SER:HB2	2:D:99:MET:OXT	2.08	0.53
1:C:78:THR:O	1:C:82:GLN:HG3	2.10	0.52
1:A:89:SER:O	1:A:91:LYS:N	2.42	0.52
2:B:36:GLU:HA	2:B:36:GLU:OE1	2.11	0.51
1:A:212:GLY:HA3	2:B:12:ARG:NH2	2.25	0.51
1:C:182:ASP:O	1:C:185:LYS:HD2	2.11	0.51
1:C:212:GLY:CA	2:D:12:ARG:NH2	2.74	0.51
1:A:118:VAL:HB	1:A:126:VAL:HB	1.91	0.51
1:C:29:VAL:CG2	1:C:36:GLN:NE2	2.74	0.50
1:A:135:THR:HG23	1:A:147:ILE:HG12	1.94	0.50
1:A:15:MET:HG2	2:B:62:PHE:CE2	2.42	0.50
1:C:94:TYR:HB3	1:C:95:PRO:CD	2.42	0.50
1:C:192:TRP:CE3	2:D:14:PRO:HG3	2.47	0.49
1:C:14:GLN:HB2	6:C:702:R16:H282	1.94	0.49
1:C:219:TRP:HB3	1:C:266:LYS:HB2	1.95	0.49
1:C:195:SER:OG	1:C:204:ARG:NH2	2.46	0.49
2:B:41:LYS:HG3	2:B:78:TYR:CE2	2.49	0.48
1:C:16:SER:OG	1:C:26:THR:HB	2.14	0.48
1:C:219:TRP:HA	1:C:234:ARG:HH22	1.79	0.48
1:A:206:LEU:HD22	1:A:253:VAL:HG11	1.95	0.48
2:D:73:THR:CG2	2:D:75:THR:OG1	2.62	0.48
1:A:29:VAL:CG2	1:A:36:GLN:NE2	2.77	0.47
1:C:89:SER:CB	1:C:90:PRO:CD	2.92	0.47
2:D:7:ILE:HB	2:D:93:VAL:HG11	1.96	0.47
1:A:47:ILE:HD12	1:A:67:GLN:HG3	1.96	0.47
1:A:224:ARG:NH2	1:A:257:GLU:O	2.42	0.47
1:C:9:THR:O	1:C:11:ARG:NH2	2.47	0.47

Continued on next page...

Continued from previous page...

Atom-1	Atom-2	Interatomic distance (Å)	Clash overlap (Å)
1:C:191:ALA:HA	1:C:209:HIS:O	2.15	0.47
2:D:50:GLU:O	2:D:66:ALA:HA	2.15	0.47
1:C:136:VAL:HG13	1:C:137:PRO:HD2	1.97	0.46
1:A:89:SER:CB	1:A:90:PRO:CD	2.89	0.46
1:A:88:MET:HA	1:A:142:TRP:CE3	2.50	0.46
1:C:29:VAL:HG23	1:C:36:GLN:HE21	1.80	0.46
1:A:29:VAL:HG23	1:A:36:GLN:NE2	2.30	0.46
2:D:73:THR:CG2	2:D:74:GLU:N	2.79	0.45
1:A:91:LYS:O	1:A:93:ASP:N	2.49	0.45
1:A:121:GLN:HA	1:A:121:GLN:OE1	2.16	0.45
1:C:15:MET:HE1	2:D:54:MET:CG	2.47	0.45
1:A:30:VAL:CG1	1:A:38:HIS:HB2	2.45	0.45
1:C:168:CYS:O	1:C:172:VAL:HG23	2.16	0.45
1:A:79:ARG:NE	1:A:80:ASP:OD1	2.44	0.45
1:C:196:VAL:HA	1:C:197:PRO:HD2	1.69	0.45
2:D:74:GLU:H	2:D:74:GLU:CD	2.21	0.44
2:B:21:ASN:HB3	2:B:70:PHE:CE1	2.52	0.44
2:D:32:PRO:HB2	2:D:33:PRO:HD2	1.99	0.44
2:D:73:THR:HG22	2:D:74:GLU:N	2.32	0.44
1:C:13:LEU:O	1:C:28:SER:HA	2.16	0.44
2:D:95:TRP:CZ2	2:D:97:ARG:HA	2.52	0.44
1:C:15:MET:HG2	2:D:62:PHE:HE2	1.83	0.44
1:C:216:LYS:HD3	1:C:245:TRP:CE2	2.51	0.44
1:C:221:MET:HE2	1:C:221:MET:HB3	1.87	0.44
1:A:218:VAL:HG12	1:A:219:TRP:N	2.33	0.44
1:A:220:VAL:O	1:A:221:MET:HG2	2.18	0.44
1:C:265:VAL:HG13	1:C:275:ILE:HB	2.00	0.44
1:A:189:PRO:HB3	1:A:213:PHE:HB3	1.99	0.43
1:C:127:ARG:HD3	1:C:134:GLN:OE1	2.17	0.43
1:C:220:VAL:HG22	1:C:265:VAL:HB	1.99	0.43
1:A:85:VAL:HG22	1:A:88:MET:HE3	2.00	0.43
1:C:135:THR:HG23	1:C:147:ILE:HG12	2.01	0.43
2:D:7:ILE:HD12	2:D:91:LYS:HD2	2.00	0.43
2:D:73:THR:HG21	2:D:75:THR:OG1	2.18	0.43
2:B:73:THR:CG2	2:B:74:GLU:N	2.81	0.43
1:A:94:TYR:HB3	1:A:95:PRO:CD	2.49	0.43
1:C:30:VAL:HG22	1:C:37:THR:OG1	2.19	0.43
1:A:73:TYR:HE1	5:A:601:PBS:H62	1.84	0.43
2:D:71:THR:HA	2:D:72:PRO:HD2	1.72	0.43
2:D:5:PRO:O	2:D:91:LYS:NZ	2.45	0.42
1:C:18:PHE:CD2	1:C:24:SER:OG	2.68	0.42

Continued on next page...

Continued from previous page...

Atom-1	Atom-2	Interatomic distance (Å)	Clash overlap (Å)
1:C:188:LYS:HA	1:C:269:SER:OG	2.18	0.42
2:D:2:GLN:HG2	2:D:86:SER:OG	2.19	0.42
1:C:15:MET:HE1	2:D:54:MET:HG2	2.01	0.42
2:D:21:ASN:HB3	2:D:70:PHE:CE1	2.54	0.42
1:A:220:VAL:H	1:A:234:ARG:HH21	1.67	0.42
1:A:214:TYR:CG	1:A:215:PRO:HA	2.55	0.42
1:A:11:ARG:HB2	1:A:13:LEU:HD13	2.00	0.42
1:A:266:LYS:NZ	7:A:744:HOH:O	2.52	0.42
1:A:218:VAL:HG12	1:A:219:TRP:H	1.85	0.42
2:B:46:ILE:HA	2:B:47:PRO:HD3	1.91	0.42
1:C:9:THR:HA	1:C:105:GLU:HA	2.02	0.42
1:C:28:SER:OG	6:C:702:R16:H291	2.20	0.42
2:D:32:PRO:CB	2:D:33:PRO:HD2	2.50	0.41
1:C:81:ILE:O	1:C:85:VAL:HB	2.20	0.41
1:A:224:ARG:NH1	1:A:261:LEU:HD21	2.35	0.41
2:D:95:TRP:CE2	2:D:97:ARG:HA	2.55	0.41
1:A:173:ARG:O	1:A:177:GLU:HG3	2.21	0.41
2:D:4:THR:HG23	2:D:4:THR:O	2.20	0.41
1:A:215:PRO:HB2	1:A:217:PRO:HD2	2.03	0.41
1:C:15:MET:HG2	2:D:62:PHE:CE2	2.56	0.41
1:A:22:SER:HA	7:A:745:HOH:O	2.20	0.40
1:A:133:TRP:CH2	5:A:601:PBS:H81	2.57	0.40
1:A:168:CYS:O	1:A:172:VAL:HG23	2.22	0.40
1:A:196:VAL:HA	1:A:197:PRO:HD2	1.86	0.40
1:A:16:SER:OG	1:A:26:THR:CB	2.58	0.40
1:C:140:PRO:HD2	1:C:143:LEU:HD12	2.03	0.40

All (1) symmetry-related close contacts are listed below. The label for Atom-2 includes the symmetry operator and encoded unit-cell translations to be applied.

Atom-1	Atom-2	Interatomic distance (Å)	Clash overlap (Å)
1:A:162:MET:CG	2:B:97:ARG:NH2[1_655]	1.99	0.21

5.3 Torsion angles [i](#)

5.3.1 Protein backbone [i](#)

In the following table, the Percentiles column shows the percent Ramachandran outliers of the chain as a percentile score with respect to all X-ray entries followed by that with respect to entries of similar resolution.

The Analysed column shows the number of residues for which the backbone conformation was analysed, and the total number of residues.

Mol	Chain	Analysed	Favoured	Allowed	Outliers	Percentiles	
1	A	259/285 (91%)	249 (96%)	5 (2%)	5 (2%)	8	5
1	C	260/285 (91%)	250 (96%)	6 (2%)	4 (2%)	10	8
2	B	96/99 (97%)	90 (94%)	5 (5%)	1 (1%)	15	14
2	D	96/99 (97%)	90 (94%)	5 (5%)	1 (1%)	15	14
All	All	711/768 (93%)	679 (96%)	21 (3%)	11 (2%)	10	8

All (11) Ramachandran outliers are listed below:

Mol	Chain	Res	Type
1	A	90	PRO
1	A	92	GLU
1	A	94	TYR
1	A	95	PRO
2	B	97	ARG
1	C	89	SER
1	C	90	PRO
1	C	94	TYR
1	C	95	PRO
2	D	97	ARG
1	A	89	SER

5.3.2 Protein sidechains [i](#)

In the following table, the Percentiles column shows the percent sidechain outliers of the chain as a percentile score with respect to all X-ray entries followed by that with respect to entries of similar resolution.

The Analysed column shows the number of residues for which the sidechain conformation was analysed, and the total number of residues.

Mol	Chain	Analysed	Rotameric	Outliers	Percentiles	
1	A	233/249 (94%)	213 (91%)	20 (9%)	10	10
1	C	234/249 (94%)	215 (92%)	19 (8%)	11	12
2	B	92/93 (99%)	85 (92%)	7 (8%)	13	14
2	D	92/93 (99%)	85 (92%)	7 (8%)	13	14
All	All	651/684 (95%)	598 (92%)	53 (8%)	11	12

All (53) residues with a non-rotameric sidechain are listed below:

Mol	Chain	Res	Type
1	A	13	LEU
1	A	15	MET
1	A	26	THR
1	A	30	VAL
1	A	43	ASP
1	A	62	GLN
1	A	79	ARG
1	A	89	SER
1	A	90	PRO
1	A	91	LYS
1	A	97	GLU
1	A	104	CYS
1	A	147	ILE
1	A	148	LYS
1	A	164	LEU
1	A	170	LEU
1	A	173	ARG
1	A	182	ASP
1	A	187	GLU
1	A	265	VAL
2	B	4	THR
2	B	12	ARG
2	B	44	LYS
2	B	70	PHE
2	B	71	THR
2	B	73	THR
2	B	89	GLU
1	C	13	LEU
1	C	26	THR
1	C	30	VAL
1	C	43	ASP
1	C	57	LYS
1	C	67	GLN
1	C	75	VAL
1	C	79	ARG
1	C	85	VAL
1	C	89	SER
1	C	91	LYS
1	C	141	SER
1	C	164	LEU
1	C	185	LYS
1	C	187	GLU

Continued on next page...

Continued from previous page...

Mol	Chain	Res	Type
1	C	204	ARG
1	C	252	ASP
1	C	265	VAL
1	C	274	ASP
2	D	11	SER
2	D	12	ARG
2	D	50	GLU
2	D	70	PHE
2	D	71	THR
2	D	93	VAL
2	D	97	ARG

Sometimes sidechains can be flipped to improve hydrogen bonding and reduce clashes. All (4) such sidechains are listed below:

Mol	Chain	Res	Type
1	A	67	GLN
1	C	7	ASN
1	C	36	GLN
1	C	117	HIS

5.3.3 RNA [i](#)

There are no RNA molecules in this entry.

5.4 Non-standard residues in protein, DNA, RNA chains [i](#)

There are no non-standard protein/DNA/RNA residues in this entry.

5.5 Carbohydrates [i](#)

4 monosaccharides are modelled in this entry.

In the following table, the Counts columns list the number of bonds (or angles) for which Mogul statistics could be retrieved, the number of bonds (or angles) that are observed in the model and the number of bonds (or angles) that are defined in the Chemical Component Dictionary. The Link column lists molecule types, if any, to which the group is linked. The Z score for a bond length (or angle) is the number of standard deviations the observed value is removed from the expected value. A bond length (or angle) with $|Z| > 2$ is considered an outlier worth inspection. RMSZ is the root-mean-square of all Z scores of the bond lengths (or angles).

Mol	Type	Chain	Res	Link	Bond lengths			Bond angles		
					Counts	RMSZ	# Z > 2	Counts	RMSZ	# Z > 2
3	NAG	E	1	3,1	14,14,15	0.79	0	17,19,21	1.52	3 (17%)
3	NAG	E	2	3	14,14,15	0.55	0	17,19,21	1.66	3 (17%)
3	NAG	F	1	3,1	14,14,15	0.62	0	17,19,21	1.39	4 (23%)
3	NAG	F	2	3	14,14,15	0.64	0	17,19,21	1.33	2 (11%)

In the following table, the Chirals column lists the number of chiral outliers, the number of chiral centers analysed, the number of these observed in the model and the number defined in the Chemical Component Dictionary. Similar counts are reported in the Torsion and Rings columns. '-' means no outliers of that kind were identified.

Mol	Type	Chain	Res	Link	Chirals	Torsions	Rings
3	NAG	E	1	3,1	-	2/6/23/26	0/1/1/1
3	NAG	E	2	3	-	2/6/23/26	0/1/1/1
3	NAG	F	1	3,1	-	0/6/23/26	0/1/1/1
3	NAG	F	2	3	-	0/6/23/26	0/1/1/1

There are no bond length outliers.

All (12) bond angle outliers are listed below:

Mol	Chain	Res	Type	Atoms	Z	Observed(°)	Ideal(°)
3	E	2	NAG	C1-O5-C5	4.78	118.67	112.19
3	E	1	NAG	O5-C1-C2	-3.14	106.33	111.29
3	E	2	NAG	O4-C4-C5	2.93	116.58	109.30
3	F	1	NAG	O5-C1-C2	-2.82	106.84	111.29
3	E	2	NAG	C2-N2-C7	-2.53	119.30	122.90
3	F	2	NAG	C1-O5-C5	2.51	115.59	112.19
3	E	1	NAG	C6-C5-C4	2.24	118.26	113.00
3	E	1	NAG	C3-C4-C5	-2.20	106.32	110.24
3	F	1	NAG	C1-O5-C5	-2.15	109.28	112.19
3	F	2	NAG	O5-C5-C6	2.10	110.49	107.20
3	F	1	NAG	C3-C4-C5	-2.05	106.58	110.24
3	F	1	NAG	C6-C5-C4	2.02	117.74	113.00

There are no chirality outliers.

All (4) torsion outliers are listed below:

Mol	Chain	Res	Type	Atoms
3	E	1	NAG	C4-C5-C6-O6
3	E	1	NAG	O5-C5-C6-O6
3	E	2	NAG	C8-C7-N2-C2

Continued on next page...

Continued from previous page...

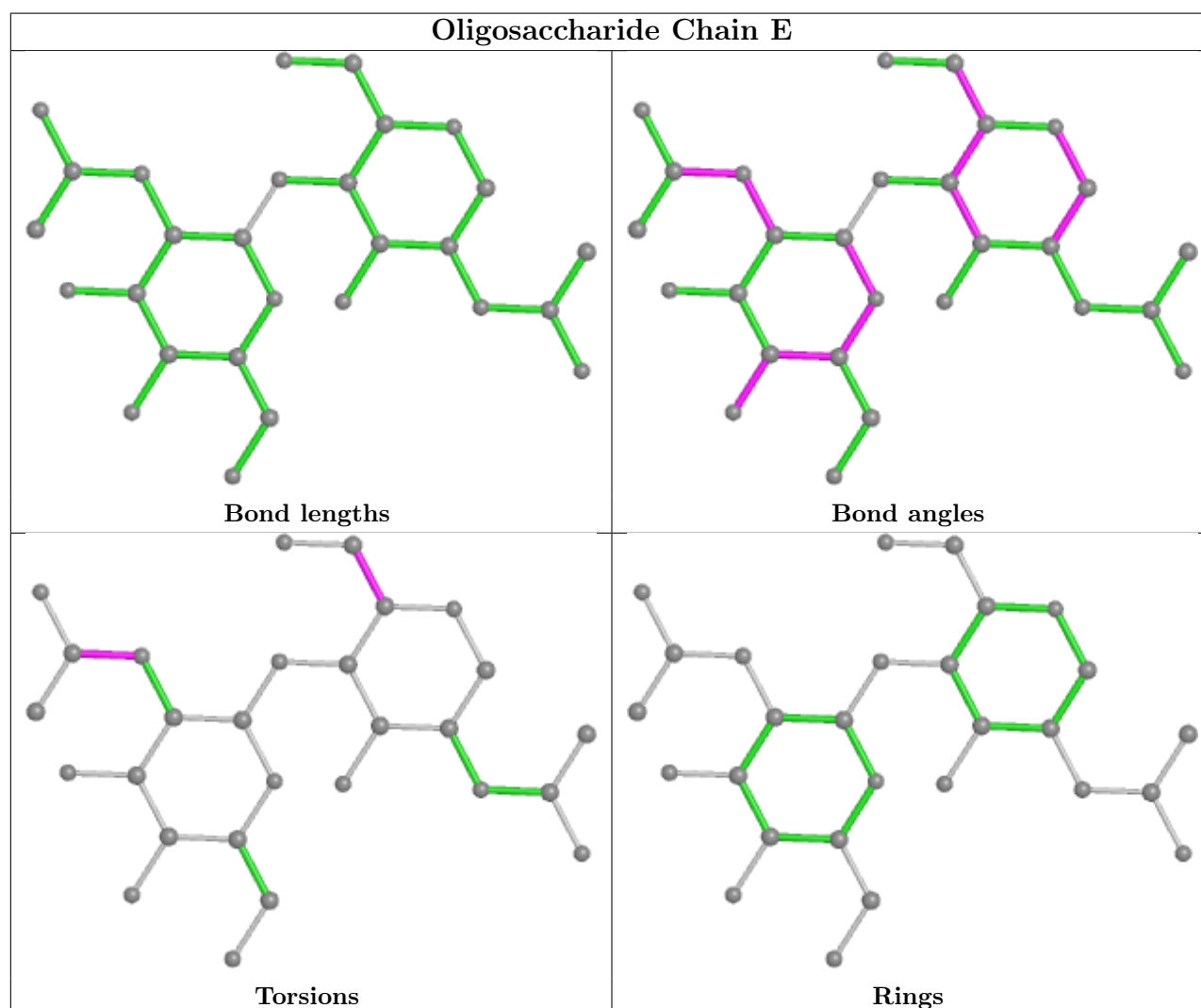
Mol	Chain	Res	Type	Atoms
3	E	2	NAG	O7-C7-N2-C2

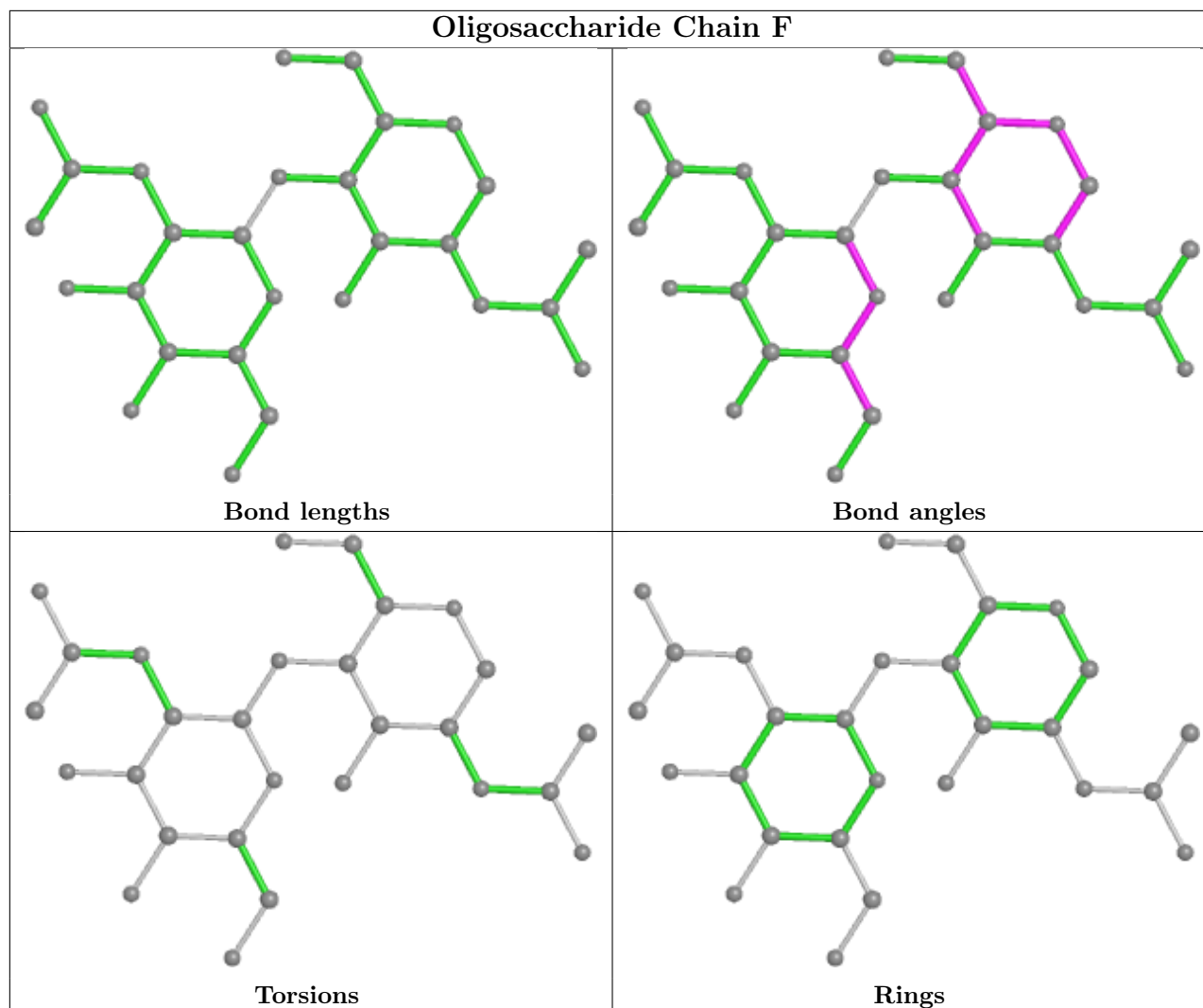
There are no ring outliers.

1 monomer is involved in 1 short contact:

Mol	Chain	Res	Type	Clashes	Symm-Clashes
3	E	1	NAG	1	0

The following is a two-dimensional graphical depiction of Mogul quality analysis of bond lengths, bond angles, torsion angles, and ring geometry for oligosaccharide.





5.6 Ligand geometry [i](#)

7 ligands are modelled in this entry.

In the following table, the Counts columns list the number of bonds (or angles) for which Mogul statistics could be retrieved, the number of bonds (or angles) that are observed in the model and the number of bonds (or angles) that are defined in the Chemical Component Dictionary. The Link column lists molecule types, if any, to which the group is linked. The Z score for a bond length (or angle) is the number of standard deviations the observed value is removed from the expected value. A bond length (or angle) with $|Z| > 2$ is considered an outlier worth inspection. RMSZ is the root-mean-square of all Z scores of the bond lengths (or angles).

Mol	Type	Chain	Res	Link	Bond lengths			Bond angles		
					Counts	RMSZ	# Z > 2	Counts	RMSZ	# Z > 2
5	PBS	A	601	-	42,42,42	1.04	2 (4%)	47,51,51	1.34	3 (6%)
5	PBS	C	602	-	42,42,42	0.67	1 (2%)	47,51,51	0.83	2 (4%)
6	R16	C	702	-	15,15,15	0.65	0	14,14,14	0.30	0

Mol	Type	Chain	Res	Link	Bond lengths			Bond angles		
					Counts	RMSZ	# Z > 2	Counts	RMSZ	# Z > 2
4	NAG	A	501	1	14,14,15	0.81	1 (7%)	17,19,21	1.39	2 (11%)
6	R16	A	701	-	15,15,15	0.76	0	14,14,14	0.44	0
4	NAG	A	500	1	14,14,15	0.76	0	17,19,21	1.51	2 (11%)
4	NAG	C	501	1	14,14,15	0.54	0	17,19,21	1.60	3 (17%)

In the following table, the Chirals column lists the number of chiral outliers, the number of chiral centers analysed, the number of these observed in the model and the number defined in the Chemical Component Dictionary. Similar counts are reported in the Torsion and Rings columns. '-' means no outliers of that kind were identified.

Mol	Type	Chain	Res	Link	Chirals	Torsions	Rings
5	PBS	A	601	-	-	12/40/60/60	0/1/1/1
5	PBS	C	602	-	-	9/40/60/60	0/1/1/1
6	R16	C	702	-	-	9/13/13/13	-
4	NAG	A	501	1	-	0/6/23/26	0/1/1/1
6	R16	A	701	-	-	6/13/13/13	-
4	NAG	A	500	1	-	3/6/23/26	0/1/1/1
4	NAG	C	501	1	-	4/6/23/26	0/1/1/1

All (4) bond length outliers are listed below:

Mol	Chain	Res	Type	Atoms	Z	Observed(Å)	Ideal(Å)
5	A	601	PBS	OC1-CG1	4.59	1.48	1.40
5	A	601	PBS	C1-N	2.46	1.50	1.46
5	C	602	PBS	OC1-CG1	2.28	1.44	1.40
4	A	501	NAG	O5-C1	-2.18	1.40	1.43

All (12) bond angle outliers are listed below:

Mol	Chain	Res	Type	Atoms	Z	Observed(°)	Ideal(°)
4	A	500	NAG	C1-O5-C5	4.47	118.25	112.19
4	C	501	NAG	C1-O5-C5	4.26	117.97	112.19
5	A	601	PBS	C-OC1-CG1	3.91	121.38	113.74
5	A	601	PBS	OC1-CG1-CG2	3.15	113.23	108.30
4	A	501	NAG	C4-C3-C2	2.79	115.10	111.02
5	C	602	PBS	C5-C4-C3	-2.61	109.88	114.18
5	A	601	PBS	OG-CG-CG4	2.58	114.37	109.69
4	A	501	NAG	C1-O5-C5	2.55	115.65	112.19
4	A	500	NAG	O5-C1-C2	-2.39	107.52	111.29
4	C	501	NAG	C2-N2-C7	-2.38	119.52	122.90

Continued on next page...

Continued from previous page...

Mol	Chain	Res	Type	Atoms	Z	Observed(°)	Ideal(°)
5	C	602	PBS	C-OC1-CG1	2.28	118.19	113.74
4	C	501	NAG	O4-C4-C5	2.14	114.62	109.30

There are no chirality outliers.

All (43) torsion outliers are listed below:

Mol	Chain	Res	Type	Atoms
4	A	500	NAG	C8-C7-N2-C2
4	A	500	NAG	O7-C7-N2-C2
5	C	602	PBS	CG4-CG-CG5-OG6
5	C	602	PBS	OG-CG-CG5-OG6
4	C	501	NAG	C8-C7-N2-C2
6	C	702	R16	C36-C37-C38-C39
6	A	701	R16	C34-C35-C36-C37
6	C	702	R16	C32-C33-C34-C35
5	A	601	PBS	CG4-CG-CG5-OG6
6	C	702	R16	C38-C39-C40-C41
4	C	501	NAG	O7-C7-N2-C2
5	A	601	PBS	C20-C21-C22-C23
5	A	601	PBS	C7-C8-C9-C10
6	C	702	R16	C30-C31-C32-C33
6	C	702	R16	C37-C38-C39-C40
5	A	601	PBS	C11-C10-C9-C8
5	C	602	PBS	C20-C21-C22-C23
5	A	601	PBS	O32-C3-C4-C5
5	A	601	PBS	C14-C15-C16-C17
5	A	601	PBS	C10-C11-C12-C13
4	A	500	NAG	O5-C5-C6-O6
5	A	601	PBS	C6-C7-C8-C9
5	A	601	PBS	C21-C22-C23-C24
6	A	701	R16	C36-C37-C38-C39
6	A	701	R16	C37-C38-C39-C40
4	C	501	NAG	C4-C5-C6-O6
5	C	602	PBS	C22-C23-C24-C25
6	A	701	R16	C38-C39-C40-C41
5	C	602	PBS	C5-C6-C7-C8
6	C	702	R16	C28-C29-C30-C31
5	A	601	PBS	C5-C6-C7-C8
6	C	702	R16	C27-C28-C29-C30
6	A	701	R16	C29-C30-C31-C32
5	C	602	PBS	C11-C10-C9-C8
5	C	602	PBS	C11-C12-C13-C14

Continued on next page...

Continued from previous page...

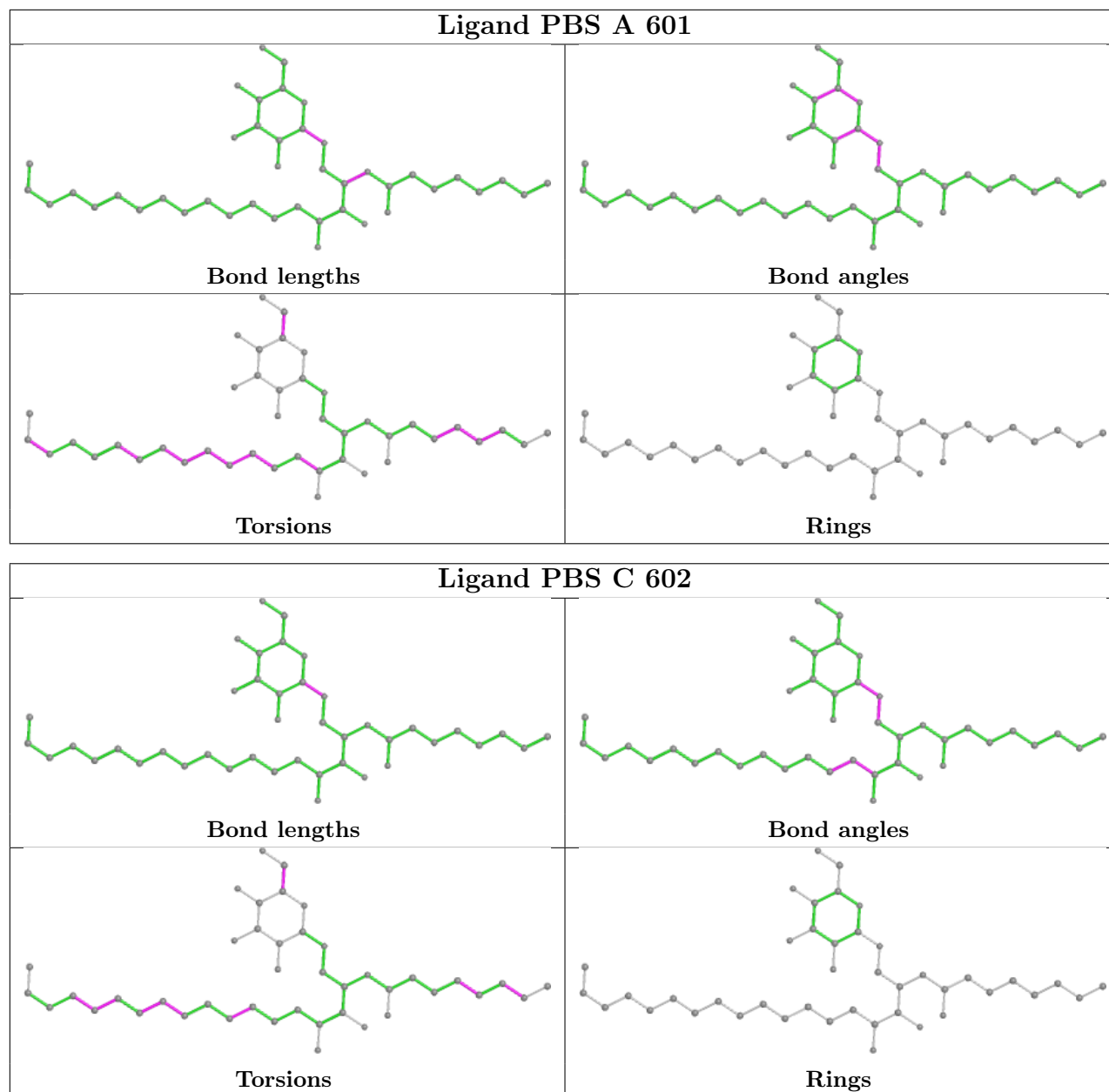
Mol	Chain	Res	Type	Atoms
5	C	602	PBS	C9-C10-C11-C12
4	C	501	NAG	O5-C5-C6-O6
5	A	601	PBS	C19-C20-C21-C22
5	C	602	PBS	C12-C13-C14-C15
6	A	701	R16	C33-C34-C35-C36
6	C	702	R16	C31-C32-C33-C34
5	A	601	PBS	C4-C5-C6-C7
6	C	702	R16	C35-C36-C37-C38

There are no ring outliers.

2 monomers are involved in 4 short contacts:

Mol	Chain	Res	Type	Clashes	Symm-Clashes
5	A	601	PBS	2	0
6	C	702	R16	2	0

The following is a two-dimensional graphical depiction of Mogul quality analysis of bond lengths, bond angles, torsion angles, and ring geometry for all instances of the Ligand of Interest. In addition, ligands with molecular weight > 250 and outliers as shown on the validation Tables will also be included. For torsion angles, if less than 5% of the Mogul distribution of torsion angles is within 10 degrees of the torsion angle in question, then that torsion angle is considered an outlier. Any bond that is central to one or more torsion angles identified as an outlier by Mogul will be highlighted in the graph. For rings, the root-mean-square deviation (RMSD) between the ring in question and similar rings identified by Mogul is calculated over all ring torsion angles. If the average RMSD is greater than 60 degrees and the minimal RMSD between the ring in question and any Mogul-identified rings is also greater than 60 degrees, then that ring is considered an outlier. The outliers are highlighted in purple. The color gray indicates Mogul did not find sufficient equivalents in the CSD to analyse the geometry.



5.7 Other polymers [\(i\)](#)

There are no such residues in this entry.

5.8 Polymer linkage issues [\(i\)](#)

There are no chain breaks in this entry.

6 Fit of model and data

6.1 Protein, DNA and RNA chains

In the following table, the column labelled ‘#RSRZ > 2’ contains the number (and percentage) of RSRZ outliers, followed by percent RSRZ outliers for the chain as percentile scores relative to all X-ray entries and entries of similar resolution. The OWAB column contains the minimum, median, 95th percentile and maximum values of the occupancy-weighted average B-factor per residue. The column labelled ‘Q < 0.9’ lists the number of (and percentage) of residues with an average occupancy less than 0.9.

Mol	Chain	Analysed	<RSRZ>	#RSRZ>2	OWAB(Å ²)	Q<0.9
1	A	265/285 (92%)	0.86	21 (7%) 12 11	61, 73, 82, 91	9 (3%)
1	C	266/285 (93%)	0.65	16 (6%) 21 20	65, 73, 82, 88	12 (4%)
2	B	98/99 (98%)	0.56	3 (3%) 49 47	67, 73, 81, 86	7 (7%)
2	D	98/99 (98%)	0.55	3 (3%) 49 47	65, 73, 80, 89	7 (7%)
All	All	727/768 (94%)	0.70	43 (5%) 22 21	61, 73, 82, 91	35 (4%)

All (43) RSRZ outliers are listed below:

Mol	Chain	Res	Type	RSRZ
1	A	202	GLY	5.4
1	C	7	ASN	3.8
1	C	201	HIS	3.5
1	A	93	ASP	3.5
1	A	23	TRP	3.3
1	A	272	GLY	3.3
1	C	271	GLY	3.3
2	B	99	MET	3.2
1	A	95	PRO	3.1
2	B	88	ALA	3.1
1	A	108	PRO	2.9
1	C	8	TYR	2.9
1	A	168	CYS	2.8
1	A	19	ALA	2.8
1	A	22	SER	2.8
1	A	96	ILE	2.7
1	C	230	GLN	2.7
1	A	219	TRP	2.6
1	C	276	ILE	2.6
1	A	94	TYR	2.5
1	C	149	VAL	2.4

Continued on next page...

Continued from previous page...

Mol	Chain	Res	Type	RSRZ
1	A	47	ILE	2.4
1	C	19	ALA	2.3
1	C	215	PRO	2.3
1	C	189	PRO	2.2
2	B	48	LYS	2.2
1	C	214	TYR	2.2
1	A	116	LEU	2.2
1	A	173	ARG	2.2
2	D	99	MET	2.2
2	D	34	HIS	2.1
1	A	37	THR	2.1
1	C	219	TRP	2.1
1	A	220	VAL	2.1
1	A	234	ARG	2.1
1	A	265	VAL	2.1
1	C	23	TRP	2.1
1	C	197	PRO	2.1
1	A	177	GLU	2.0
1	C	82	GLN	2.0
1	A	273	GLN	2.0
1	C	89	SER	2.0
2	D	22	ILE	2.0

6.2 Non-standard residues in protein, DNA, RNA chains [\(i\)](#)

There are no non-standard protein/DNA/RNA residues in this entry.

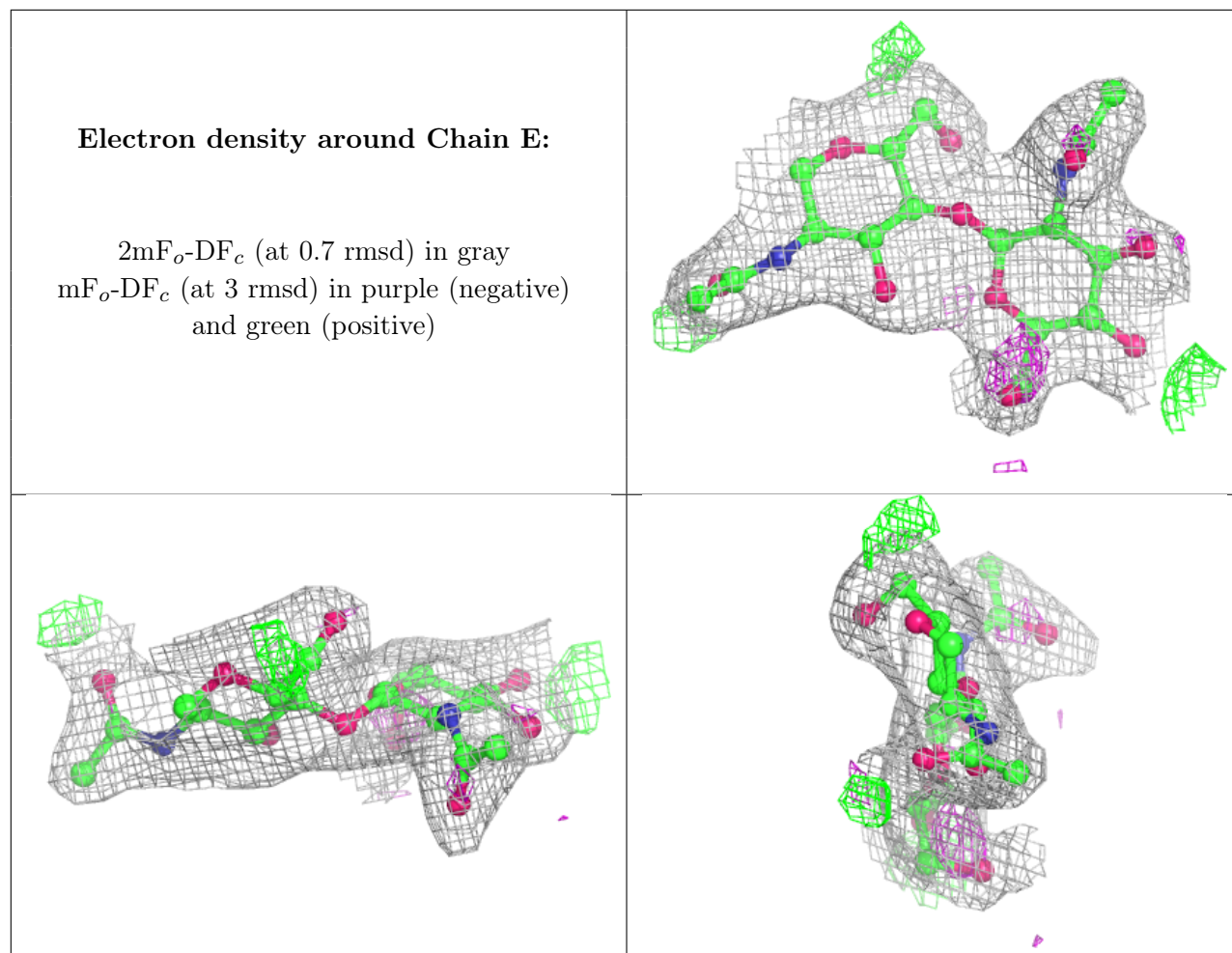
6.3 Carbohydrates [\(i\)](#)

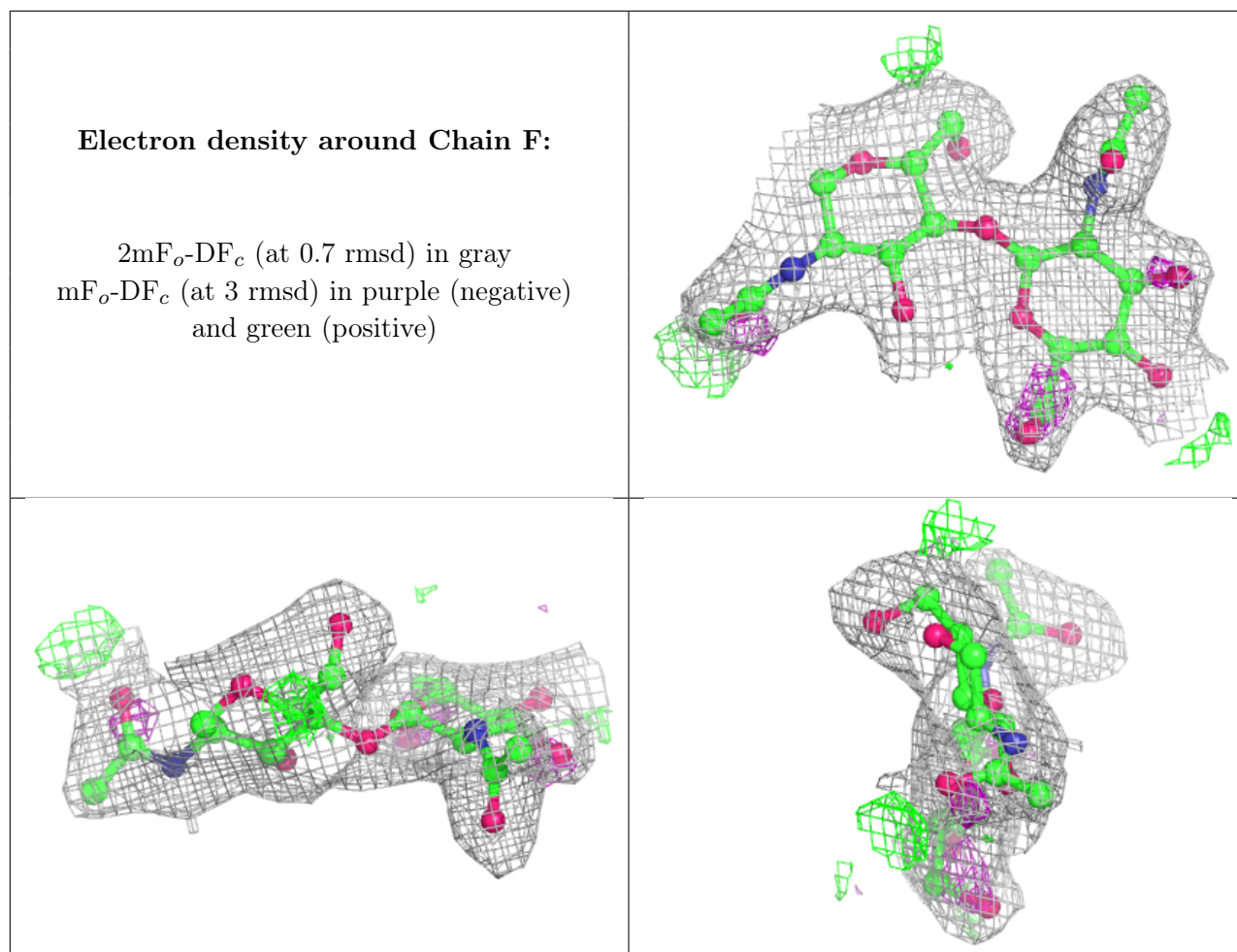
In the following table, the Atoms column lists the number of modelled atoms in the group and the number defined in the chemical component dictionary. The B-factors column lists the minimum, median, 95th percentile and maximum values of B factors of atoms in the group. The column labelled 'Q< 0.9' lists the number of atoms with occupancy less than 0.9.

Mol	Type	Chain	Res	Atoms	RSCC	RSR	B-factors(Å ²)	Q<0.9
3	NAG	E	2	14/15	0.88	0.14	67,71,76,78	0
3	NAG	F	2	14/15	0.92	0.13	70,72,75,75	0
3	NAG	F	1	14/15	0.93	0.13	64,67,71,72	0
3	NAG	E	1	14/15	0.95	0.13	63,68,70,71	0

The following is a graphical depiction of the model fit to experimental electron density for oligosac-

charide. Each fit is shown from different orientation to approximate a three-dimensional view.





6.4 Ligands [i](#)

In the following table, the Atoms column lists the number of modelled atoms in the group and the number defined in the chemical component dictionary. The B-factors column lists the minimum, median, 95th percentile and maximum values of B factors of atoms in the group. The column labelled 'Q<0.9' lists the number of atoms with occupancy less than 0.9.

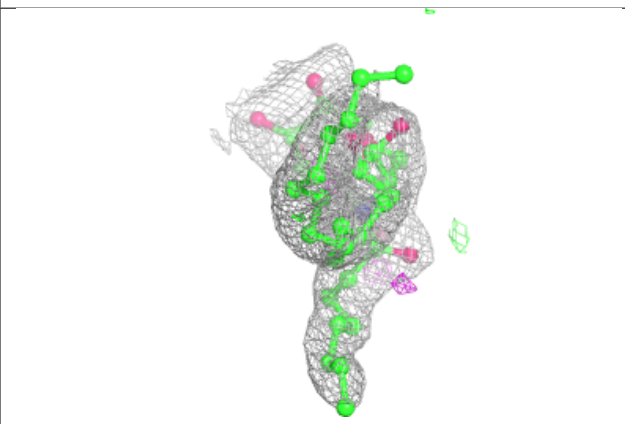
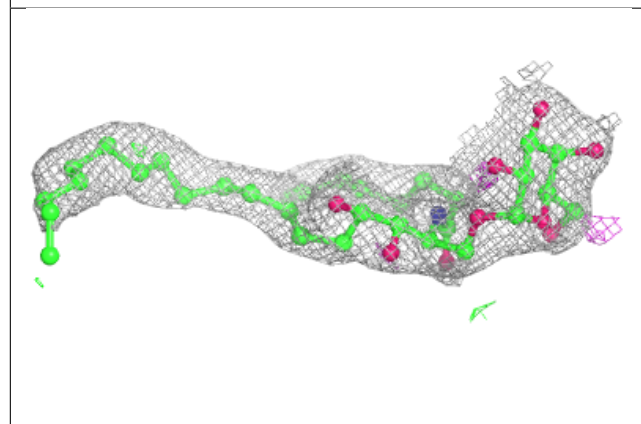
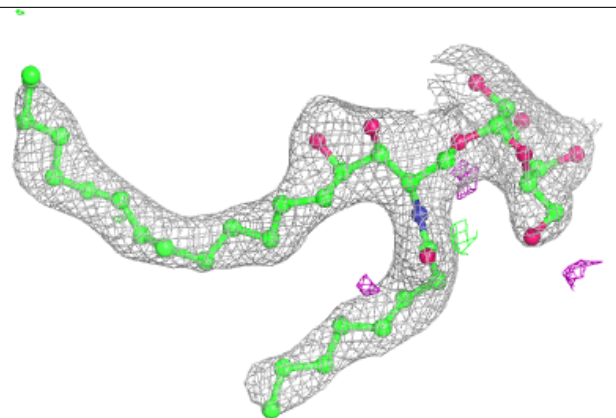
Mol	Type	Chain	Res	Atoms	RSCC	RSR	B-factors(Å ²)	Q<0.9
4	NAG	A	500	14/15	0.55	0.31	74,76,77,77	0
6	R16	A	701	16/16	0.72	0.35	80,83,87,87	0
6	R16	C	702	16/16	0.75	0.33	82,84,86,87	0
4	NAG	C	501	14/15	0.86	0.15	75,77,80,83	0
5	PBS	A	601	42/42	0.89	0.19	74,79,88,93	0
4	NAG	A	501	14/15	0.91	0.17	71,74,76,77	0
5	PBS	C	602	42/42	0.92	0.21	72,78,84,87	0

The following is a graphical depiction of the model fit to experimental electron density of all instances of the Ligand of Interest. In addition, ligands with molecular weight > 250 and outliers as shown on the geometry validation Tables will also be included. Each fit is shown from different

orientation to approximate a three-dimensional view.

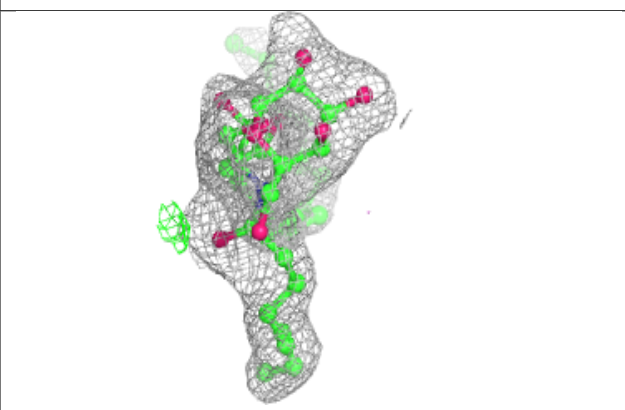
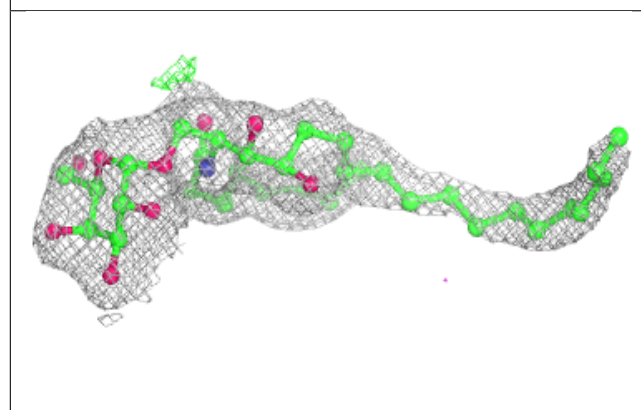
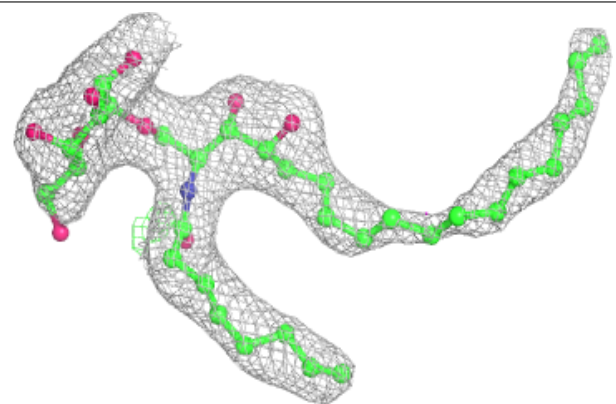
Electron density around PBS A 601:

$2mF_o-DF_c$ (at 0.7 rmsd) in gray
 mF_o-DF_c (at 3 rmsd) in purple (negative)
and green (positive)



Electron density around PBS C 602:

$2mF_o-DF_c$ (at 0.7 rmsd) in gray
 mF_o-DF_c (at 3 rmsd) in purple (negative)
and green (positive)



6.5 Other polymers [i](#)

There are no such residues in this entry.