



# Full wwPDB X-ray Structure Validation Report ⓘ

Aug 9, 2021 – 12:14 PM JST

PDB ID : 5Z87  
Title : Structural of a novel b-glucosidase EmGH1 at 2.3 angstrom from *Erythrobacter marinus*  
Authors : Li, J.X.; Hu, X.J.; Zhao, Y.; Li, L.  
Deposited on : 2018-01-31  
Resolution : 2.30 Å(reported)

This is a Full wwPDB X-ray Structure Validation Report for a publicly released PDB entry.

We welcome your comments at [validation@mail.wwpdb.org](mailto:validation@mail.wwpdb.org)

A user guide is available at

<https://www.wwpdb.org/validation/2017/XrayValidationReportHelp>

with specific help available everywhere you see the ⓘ symbol.

---

The following versions of software and data (see [references ⓘ](#)) were used in the production of this report:

MolProbity : 4.02b-467  
Mogul : 1.8.5 (274361), CSD as541be (2020)  
Xtriage (Phenix) : 1.13  
EDS : 2.23.1  
Percentile statistics : 20191225.v01 (using entries in the PDB archive December 25th 2019)  
Refmac : 5.8.0158  
CCP4 : 7.0.044 (Gargrove)  
Ideal geometry (proteins) : Engh & Huber (2001)  
Ideal geometry (DNA, RNA) : Parkinson et al. (1996)  
Validation Pipeline (wwPDB-VP) : 2.23.1

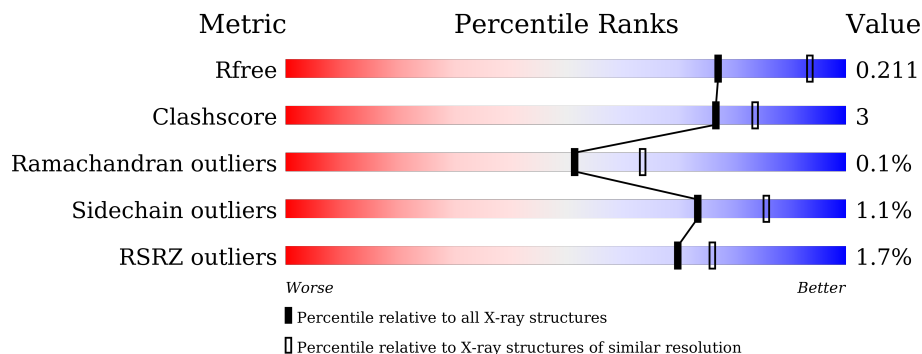
# 1 Overall quality at a glance

The following experimental techniques were used to determine the structure:

*X-RAY DIFFRACTION*

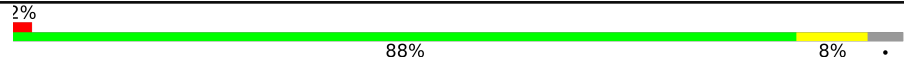
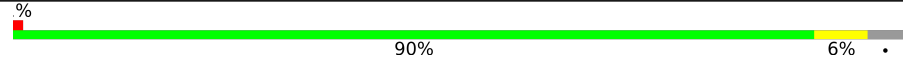
The reported resolution of this entry is 2.30 Å.

Percentile scores (ranging between 0-100) for global validation metrics of the entry are shown in the following graphic. The table shows the number of entries on which the scores are based.



Metric	Whole archive (#Entries)	Similar resolution (#Entries, resolution range(Å))
$R_{free}$	130704	5042 (2.30-2.30)
Clashscore	141614	5643 (2.30-2.30)
Ramachandran outliers	138981	5575 (2.30-2.30)
Sidechain outliers	138945	5575 (2.30-2.30)
RSRZ outliers	127900	4938 (2.30-2.30)

The table below summarises the geometric issues observed across the polymeric chains and their fit to the electron density. The red, orange, yellow and green segments of the lower bar indicate the fraction of residues that contain outliers for  $\geq 3$ , 2, 1 and 0 types of geometric quality criteria respectively. A grey segment represents the fraction of residues that are not modelled. The numeric value for each fraction is indicated below the corresponding segment, with a dot representing fractions  $\leq 5\%$ . The upper red bar (where present) indicates the fraction of residues that have poor fit to the electron density. The numeric value is given above the bar.

Mol	Chain	Length	Quality of chain
1	A	785	 2% 88% 8% .
1	B	785	 % 90% 6% .

The following table lists non-polymeric compounds, carbohydrate monomers and non-standard residues in protein, DNA, RNA chains that are outliers for geometric or electron-density-fit criteria:

Mol	Type	Chain	Res	Chirality	Geometry	Clashes	Electron density
6	PEG	A	813	-	-	X	-
6	PEG	A	814	-	-	X	-

## 2 Entry composition [i](#)

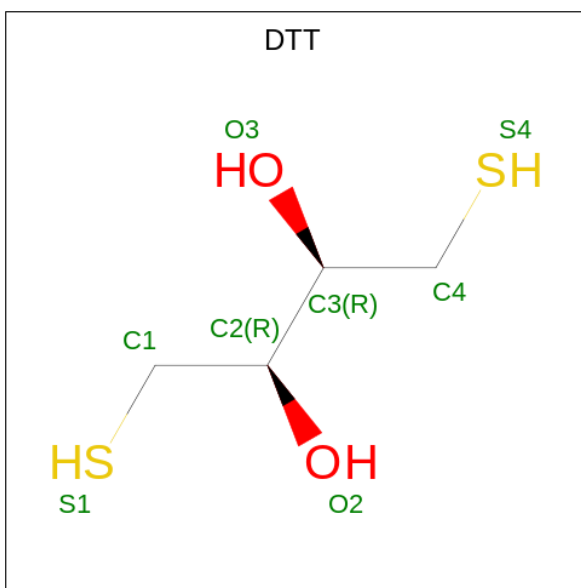
There are 8 unique types of molecules in this entry. The entry contains 12730 atoms, of which 0 are hydrogens and 0 are deuteriums.

In the tables below, the ZeroOcc column contains the number of atoms modelled with zero occupancy, the AltConf column contains the number of residues with at least one atom in alternate conformation and the Trace column contains the number of residues modelled with at most 2 atoms.

- Molecule 1 is a protein called EmGH1.

Mol	Chain	Residues	Atoms					ZeroOcc	AltConf	Trace
			Total	C	N	O	S			
1	A	756	Total 5765	C 3599	N 1028	O 1110	S 28	0	4	0
1	B	755	Total 5813	C 3628	N 1043	O 1114	S 28	0	10	0

- Molecule 2 is 2,3-DIHYDROXY-1,4-DITHIOBUTANE (three-letter code: DTT) (formula:  $C_4H_{10}O_2S_2$ ).

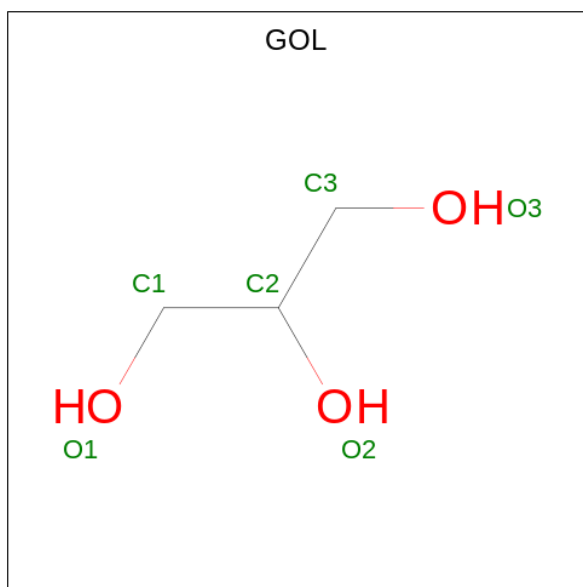


Mol	Chain	Residues	Atoms				ZeroOcc	AltConf
			Total	C	O	S		
2	A	1	Total 8	C 4	O 2	S 2	0	0
2	B	1	Total 8	C 4	O 2	S 2	0	0

- Molecule 3 is MAGNESIUM ION (three-letter code: MG) (formula: Mg).

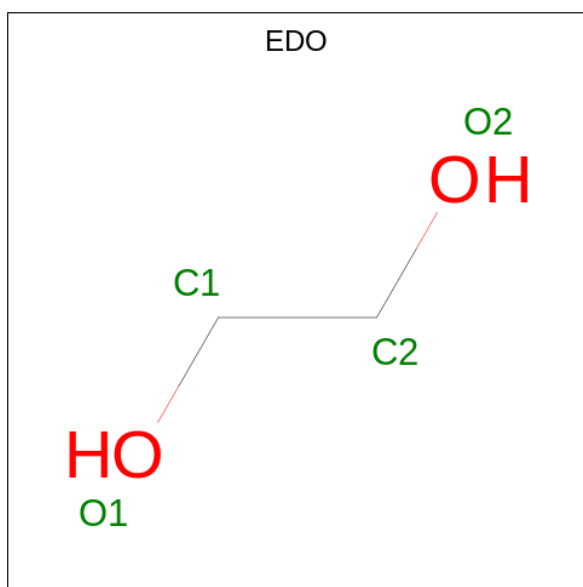
Mol	Chain	Residues	Atoms	ZeroOcc	AltConf
3	A	3	Total Mg 3 3	0	0
3	B	2	Total Mg 2 2	0	0

- Molecule 4 is GLYCEROL (three-letter code: GOL) (formula: C<sub>3</sub>H<sub>8</sub>O<sub>3</sub>).



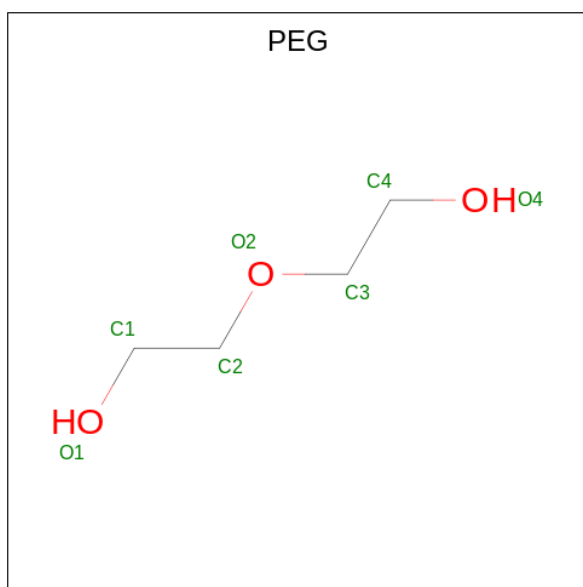
Mol	Chain	Residues	Atoms	ZeroOcc	AltConf
4	A	1	Total C O 6 3 3	0	0
4	A	1	Total C O 6 3 3	0	0
4	A	1	Total C O 6 3 3	0	0
4	B	1	Total C O 6 3 3	0	0
4	B	1	Total C O 6 3 3	0	0

- Molecule 5 is 1,2-ETHANEDIOL (three-letter code: EDO) (formula: C<sub>2</sub>H<sub>6</sub>O<sub>2</sub>).



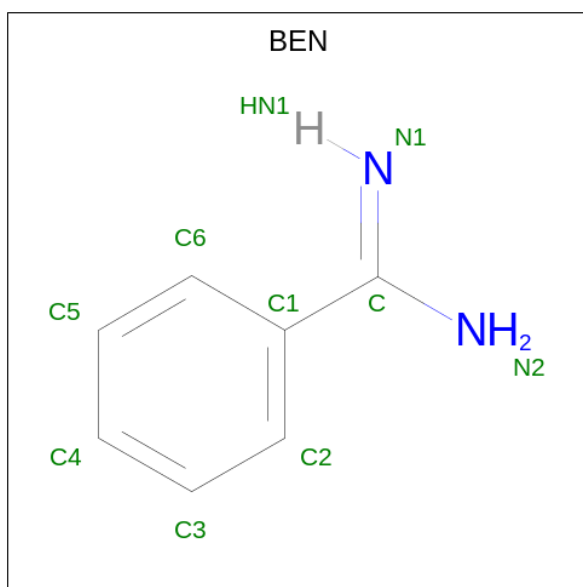
Mol	Chain	Residues	Atoms	ZeroOcc	AltConf
5	A	1	Total C O 4 2 2	0	0
5	A	1	Total C O 4 2 2	0	0
5	A	1	Total C O 4 2 2	0	0
5	A	1	Total C O 4 2 2	0	0
5	A	1	Total C O 4 2 2	0	0
5	B	1	Total C O 4 2 2	0	0
5	B	1	Total C O 4 2 2	0	0

- Molecule 6 is DI(HYDROXYETHYL)ETHER (three-letter code: PEG) (formula: C<sub>4</sub>H<sub>10</sub>O<sub>3</sub>).



Mol	Chain	Residues	Atoms	ZeroOcc	AltConf
6	A	1	Total C O 7 4 3	0	0
6	A	1	Total C O 7 4 3	0	0
6	A	1	Total C O 7 4 3	0	0
6	B	1	Total C O 7 4 3	0	0
6	B	1	Total C O 7 4 3	0	0
6	B	1	Total C O 7 4 3	0	0

- Molecule 7 is BENZAMIDINE (three-letter code: BEN) (formula: C<sub>7</sub>H<sub>8</sub>N<sub>2</sub>).



Mol	Chain	Residues	Atoms	ZeroOcc	AltConf
7	B	1	Total C N 9 7 2	0	0

- Molecule 8 is water.

Mol	Chain	Residues	Atoms	ZeroOcc	AltConf
8	A	493	Total O 493 493	0	0
8	B	529	Total O 529 529	0	0





## 4 Data and refinement statistics

Property	Value	Source
Space group	P 21 21 21	Depositor
Cell constants a, b, c, $\alpha$ , $\beta$ , $\gamma$	86.64Å 132.15Å 194.56Å 90.00° 90.00° 90.00°	Depositor
Resolution (Å)	43.32 – 2.30 43.32 – 2.30	Depositor EDS
% Data completeness (in resolution range)	100.0 (43.32-2.30) 99.9 (43.32-2.30)	Depositor EDS
$R_{merge}$	(Not available)	Depositor
$R_{sym}$	(Not available)	Depositor
$\langle I/\sigma(I) \rangle$ <sup>1</sup>	3.78 (at 2.29Å)	Xtrriage
Refinement program	PHENIX (1.12_2829: ???), REFMAC	Depositor
R, $R_{free}$	0.162 , 0.212 0.162 , 0.211	Depositor DCC
$R_{free}$ test set	4961 reflections (4.97%)	wwPDB-VP
Wilson B-factor (Å <sup>2</sup> )	26.4	Xtrriage
Anisotropy	0.438	Xtrriage
Bulk solvent $k_{sol}$ (e/Å <sup>3</sup> ), $B_{sol}$ (Å <sup>2</sup> )	0.34 , 43.1	EDS
L-test for twinning <sup>2</sup>	$\langle  L  \rangle = 0.49$ , $\langle L^2 \rangle = 0.32$	Xtrriage
Estimated twinning fraction	No twinning to report.	Xtrriage
$F_o, F_c$ correlation	0.96	EDS
Total number of atoms	12730	wwPDB-VP
Average B, all atoms (Å <sup>2</sup> )	27.0	wwPDB-VP

Xtrriage's analysis on translational NCS is as follows: *The largest off-origin peak in the Patterson function is 2.91% of the height of the origin peak. No significant pseudotranslation is detected.*

<sup>1</sup>Intensities estimated from amplitudes.

<sup>2</sup>Theoretical values of  $\langle |L| \rangle$ ,  $\langle L^2 \rangle$  for acentric reflections are 0.5, 0.333 respectively for untwinned datasets, and 0.375, 0.2 for perfectly twinned datasets.

## 5 Model quality

### 5.1 Standard geometry

Bond lengths and bond angles in the following residue types are not validated in this section: MG, DTT, PEG, BEN, GOL, EDO

The Z score for a bond length (or angle) is the number of standard deviations the observed value is removed from the expected value. A bond length (or angle) with  $|Z| > 5$  is considered an outlier worth inspection. RMSZ is the root-mean-square of all Z scores of the bond lengths (or angles).

Mol	Chain	Bond lengths		Bond angles	
		RMSZ	# Z  >5	RMSZ	# Z  >5
1	A	0.39	0/5880	0.54	0/7976
1	B	0.38	0/5928	0.55	0/8039
All	All	0.38	0/11808	0.55	0/16015

There are no bond length outliers.

There are no bond angle outliers.

There are no chirality outliers.

There are no planarity outliers.

### 5.2 Too-close contacts

In the following table, the Non-H and H(model) columns list the number of non-hydrogen atoms and hydrogen atoms in the chain respectively. The H(added) column lists the number of hydrogen atoms added and optimized by MolProbity. The Clashes column lists the number of clashes within the asymmetric unit, whereas Symm-Clashes lists symmetry-related clashes.

Mol	Chain	Non-H	H(model)	H(added)	Clashes	Symm-Clashes
1	A	5765	0	5612	39	0
1	B	5813	0	5669	32	0
2	A	8	0	10	2	0
2	B	8	0	10	2	0
3	A	3	0	0	0	0
3	B	2	0	0	0	0
4	A	18	0	24	1	0
4	B	12	0	16	0	0
5	A	20	0	30	3	0
5	B	8	0	12	0	0
6	A	21	0	30	8	0

*Continued on next page...*

*Continued from previous page...*

Mol	Chain	Non-H	H(model)	H(added)	Clashes	Symm-Clashes
6	B	21	0	30	3	0
7	B	9	0	7	0	0
8	A	493	0	0	1	0
8	B	529	0	0	2	0
All	All	12730	0	11450	70	0

The all-atom clashscore is defined as the number of clashes found per 1000 atoms (including hydrogen atoms). The all-atom clashscore for this structure is 3.

All (70) close contacts within the same asymmetric unit are listed below, sorted by their clash magnitude.

Atom-1	Atom-2	Interatomic distance (Å)	Clash overlap (Å)
1:A:724:GLU:HB3	6:A:813:PEG:H11	1.56	0.84
1:B:365[B]:GLU:OE1	1:B:367:ARG:NH2	2.10	0.84
1:B:192:ARG:HH12	2:B:801:DTT:H11	1.49	0.77
1:A:192:ARG:HH12	2:A:801:DTT:H11	1.53	0.74
1:A:779:GLU:OE1	1:A:781:ARG:NH1	2.21	0.69
1:A:365:GLU:OE1	1:A:367:ARG:NH2	2.31	0.63
1:B:313:ASP:HB3	1:B:316:ASP:OD2	1.98	0.62
1:B:576:VAL:HG12	1:B:596:ALA:HB3	1.80	0.61
1:B:427:LEU:HD21	1:B:576:VAL:HG11	1.84	0.60
1:A:180:PRO:HB3	1:A:211:ILE:HG21	1.83	0.59
1:A:313:ASP:OD2	2:A:801:DTT:H12	2.03	0.59
1:A:456:PRO:HG3	1:A:496:GLU:HG2	1.86	0.57
1:A:167:LYS:HB3	1:A:399:LEU:HD13	1.86	0.57
1:A:427:LEU:HD21	1:A:576:VAL:HG11	1.86	0.56
1:B:233:LYS:HB3	1:B:278:MET:HB3	1.86	0.56
1:B:313:ASP:OD2	2:B:801:DTT:H12	2.06	0.56
5:A:810:EDO:H11	6:B:809:PEG:H11	1.89	0.54
5:A:810:EDO:H12	1:B:654:SER:OG	2.07	0.54
1:A:436:LYS:NZ	1:A:524:ASP:OD1	2.31	0.53
1:A:313:ASP:HB3	1:A:316:ASP:OD2	2.09	0.52
1:B:113:GLN:HG3	8:B:1345:HOH:O	2.09	0.52
1:A:275:ILE:O	1:A:308:GLY:HA3	2.10	0.51
1:A:180:PRO:HD2	1:A:232:VAL:HG12	1.90	0.51
1:B:456:PRO:HB3	1:B:496:GLU:HA	1.91	0.51
1:A:260:VAL:HG22	6:A:813:PEG:H31	1.93	0.50
1:B:690[A]:ARG:HG2	1:B:744:GLU:HG3	1.93	0.50
1:B:197:TRP:CZ2	1:B:211:ILE:HD11	2.48	0.49
1:A:721:PRO:HD3	6:A:814:PEG:H41	1.94	0.48
1:B:85:PHE:O	1:B:118:ARG:HD3	2.14	0.47

*Continued on next page...*

*Continued from previous page...*

Atom-1	Atom-2	Interatomic distance (Å)	Clash overlap (Å)
1:B:31:GLN:N	8:B:915:HOH:O	2.47	0.47
1:A:67:ARG:HG2	8:A:1196:HOH:O	2.13	0.47
1:A:162:PHE:HB3	1:A:215:LEU:HG	1.96	0.47
1:B:180:PRO:HB3	1:B:211:ILE:HG21	1.96	0.47
1:A:421:GLN:O	1:A:596:ALA:HA	2.14	0.47
1:A:661:PRO:CB	1:A:775:GLN:HG3	2.45	0.47
1:A:201:PRO:HB2	6:A:812:PEG:H42	1.97	0.46
1:A:643:LYS:NZ	6:A:814:PEG:H11	2.30	0.46
1:B:162:PHE:HB3	1:B:215:LEU:HG	1.98	0.46
1:B:339[B]:ARG:HG2	1:B:368:TYR:CZ	2.51	0.46
1:B:275:ILE:O	1:B:308:GLY:HA3	2.15	0.45
1:A:233:LYS:HB3	1:A:278:MET:HB3	1.97	0.45
1:B:215:LEU:HD22	1:B:228:ILE:HD11	1.97	0.45
1:A:216:GLN:HG2	1:A:228:ILE:O	2.17	0.45
1:B:456:PRO:HD3	1:B:496:GLU:HB3	1.98	0.45
1:B:370:ARG:NE	1:B:374:GLU:OE2	2.36	0.44
1:A:540[A]:ARG:O	1:A:550:GLY:HA3	2.18	0.44
1:B:643:LYS:HE2	6:B:811:PEG:H11	1.98	0.44
1:A:645:THR:HA	1:A:648:PHE:HB2	1.99	0.44
1:A:508:PRO:O	1:A:512:ARG:HG3	2.17	0.44
1:B:197:TRP:CE2	1:B:211:ILE:HD11	2.53	0.44
1:A:679:GLU:HB2	5:A:808:EDO:H11	2.01	0.43
1:A:356:PRO:HG2	4:A:806:GOL:H2	2.02	0.42
1:A:470:ALA:HB1	1:A:475:PHE:O	2.19	0.42
1:A:551:ASP:O	1:B:652:VAL:HG12	2.19	0.42
1:A:720:ARG:HG2	6:A:814:PEG:H42	2.02	0.41
1:B:709:LEU:HD21	1:B:745:LEU:HD11	2.02	0.41
1:A:209:LYS:HD3	1:A:267:ALA:HB1	2.02	0.41
1:B:259:ASN:HB3	6:B:811:PEG:H31	2.03	0.41
1:B:540[A]:ARG:O	1:B:550:GLY:HA3	2.21	0.41
1:A:645:THR:HB	1:B:247:PHE:O	2.21	0.41
6:A:813:PEG:H41	6:A:814:PEG:C3	2.50	0.41
1:A:247:PHE:O	1:B:645:THR:HB	2.21	0.41
1:A:430:GLN:O	1:A:434:VAL:HG23	2.20	0.41
1:B:695[A]:VAL:HG21	1:B:707:VAL:HG22	2.02	0.41
1:A:526:ASP:OD1	1:A:526:ASP:N	2.47	0.41
1:A:721:PRO:CG	6:A:813:PEG:H42	2.51	0.40
1:A:436:LYS:NZ	1:A:478:GLU:OE1	2.49	0.40
1:A:708:GLN:O	1:A:770:ALA:HA	2.21	0.40
1:B:262:LEU:N	1:B:263:PRO:CD	2.85	0.40
1:B:170:ARG:HA	1:B:170:ARG:HD2	1.93	0.40

There are no symmetry-related clashes.

## 5.3 Torsion angles [i](#)

### 5.3.1 Protein backbone [i](#)

In the following table, the Percentiles column shows the percent Ramachandran outliers of the chain as a percentile score with respect to all X-ray entries followed by that with respect to entries of similar resolution.

The Analysed column shows the number of residues for which the backbone conformation was analysed, and the total number of residues.

Mol	Chain	Analysed	Favoured	Allowed	Outliers	Percentiles
1	A	758/785 (97%)	735 (97%)	22 (3%)	1 (0%)	51 64
1	B	763/785 (97%)	741 (97%)	21 (3%)	1 (0%)	51 64
All	All	1521/1570 (97%)	1476 (97%)	43 (3%)	2 (0%)	51 64

All (2) Ramachandran outliers are listed below:

Mol	Chain	Res	Type
1	A	550	GLY
1	B	550	GLY

### 5.3.2 Protein sidechains [i](#)

In the following table, the Percentiles column shows the percent sidechain outliers of the chain as a percentile score with respect to all X-ray entries followed by that with respect to entries of similar resolution.

The Analysed column shows the number of residues for which the sidechain conformation was analysed, and the total number of residues.

Mol	Chain	Analysed	Rotameric	Outliers	Percentiles
1	A	592/608 (97%)	585 (99%)	7 (1%)	71 84
1	B	597/608 (98%)	590 (99%)	7 (1%)	71 84
All	All	1189/1216 (98%)	1175 (99%)	14 (1%)	73 84

All (14) residues with a non-rotameric sidechain are listed below:

Mol	Chain	Res	Type
1	A	31	GLN

*Continued on next page...*

*Continued from previous page...*

Mol	Chain	Res	Type
1	A	104	ASN
1	A	175	GLN
1	A	410	ARG
1	A	501	ASP
1	A	524	ASP
1	A	573	LYS
1	B	104	ASN
1	B	175	GLN
1	B	501	ASP
1	B	503	SER
1	B	540[A]	ARG
1	B	540[B]	ARG
1	B	598	LEU

Sometimes sidechains can be flipped to improve hydrogen bonding and reduce clashes. There are no such sidechains identified.

### 5.3.3 RNA [i](#)

There are no RNA molecules in this entry.

## 5.4 Non-standard residues in protein, DNA, RNA chains [i](#)

There are no non-standard protein/DNA/RNA residues in this entry.

## 5.5 Carbohydrates [i](#)

There are no monosaccharides in this entry.

## 5.6 Ligand geometry [i](#)

Of 26 ligands modelled in this entry, 5 are monoatomic - leaving 21 for Mogul analysis.

In the following table, the Counts columns list the number of bonds (or angles) for which Mogul statistics could be retrieved, the number of bonds (or angles) that are observed in the model and the number of bonds (or angles) that are defined in the Chemical Component Dictionary. The Link column lists molecule types, if any, to which the group is linked. The Z score for a bond length (or angle) is the number of standard deviations the observed value is removed from the expected value. A bond length (or angle) with  $|Z| > 2$  is considered an outlier worth inspection. RMSZ is the root-mean-square of all Z scores of the bond lengths (or angles).

Mol	Type	Chain	Res	Link	Bond lengths			Bond angles		
					Counts	RMSZ	# Z  > 2	Counts	RMSZ	# Z  > 2
5	EDO	A	808	-	3,3,3	0.64	0	2,2,2	0.17	0
4	GOL	B	806	-	5,5,5	1.00	0	5,5,5	0.89	0
6	PEG	A	814	-	6,6,6	0.72	0	5,5,5	0.82	0
6	PEG	B	809	-	6,6,6	0.55	0	5,5,5	0.19	0
4	GOL	A	815	-	5,5,5	0.86	0	5,5,5	0.86	0
6	PEG	B	811	-	6,6,6	0.54	0	5,5,5	0.42	0
5	EDO	A	807	-	3,3,3	0.49	0	2,2,2	0.40	0
6	PEG	B	810	-	6,6,6	0.63	0	5,5,5	0.29	0
7	BEN	B	802	-	9,9,9	0.62	0	7,11,11	1.19	1 (14%)
2	DTT	B	801	-	7,7,7	0.78	0	4,8,8	1.43	0
2	DTT	A	801	-	7,7,7	0.82	0	4,8,8	1.53	1 (25%)
4	GOL	A	806	-	5,5,5	0.75	0	5,5,5	1.01	0
5	EDO	B	807	-	3,3,3	0.53	0	2,2,2	0.34	0
5	EDO	A	809	-	3,3,3	0.49	0	2,2,2	0.41	0
6	PEG	A	812	-	6,6,6	0.54	0	5,5,5	0.68	0
4	GOL	B	805	-	5,5,5	0.82	0	5,5,5	1.06	0
4	GOL	A	805	-	5,5,5	1.27	0	5,5,5	0.46	0
5	EDO	B	808	-	3,3,3	0.57	0	2,2,2	0.18	0
5	EDO	A	810	-	3,3,3	0.53	0	2,2,2	0.29	0
6	PEG	A	813	-	6,6,6	0.52	0	5,5,5	0.51	0
5	EDO	A	811	-	3,3,3	0.48	0	2,2,2	0.29	0

In the following table, the Chirals column lists the number of chiral outliers, the number of chiral centers analysed, the number of these observed in the model and the number defined in the Chemical Component Dictionary. Similar counts are reported in the Torsion and Rings columns. '-' means no outliers of that kind were identified.

Mol	Type	Chain	Res	Link	Chirals	Torsions	Rings
5	EDO	A	808	-	-	1/1/1/1	-
4	GOL	B	806	-	-	2/4/4/4	-
6	PEG	A	814	-	-	2/4/4/4	-
6	PEG	B	809	-	-	1/4/4/4	-
4	GOL	A	815	-	-	0/4/4/4	-
6	PEG	B	811	-	-	3/4/4/4	-
5	EDO	A	807	-	-	0/1/1/1	-
6	PEG	B	810	-	-	4/4/4/4	-
7	BEN	B	802	-	-	0/4/4/4	0/1/1/1
2	DTT	B	801	-	-	6/8/8/8	-
2	DTT	A	801	-	-	7/8/8/8	-
4	GOL	A	806	-	-	0/4/4/4	-
5	EDO	B	807	-	-	0/1/1/1	-

Continued on next page...



*Continued from previous page...*

Mol	Type	Chain	Res	Link	Chirals	Torsions	Rings
5	EDO	A	809	-	-	1/1/1/1	-
6	PEG	A	812	-	-	1/4/4/4	-
4	GOL	B	805	-	-	0/4/4/4	-
4	GOL	A	805	-	-	0/4/4/4	-
5	EDO	B	808	-	-	0/1/1/1	-
5	EDO	A	810	-	-	1/1/1/1	-
6	PEG	A	813	-	-	2/4/4/4	-
5	EDO	A	811	-	-	1/1/1/1	-

There are no bond length outliers.

All (2) bond angle outliers are listed below:

Mol	Chain	Res	Type	Atoms	Z	Observed(°)	Ideal(°)
2	A	801	DTT	C2-C1-S1	2.76	122.49	114.47
7	B	802	BEN	C6-C1-C2	2.06	121.53	118.59

There are no chirality outliers.

All (32) torsion outliers are listed below:

Mol	Chain	Res	Type	Atoms
2	A	801	DTT	S1-C1-C2-C3
2	A	801	DTT	C1-C2-C3-O3
2	A	801	DTT	C1-C2-C3-C4
2	A	801	DTT	O2-C2-C3-O3
2	A	801	DTT	O2-C2-C3-C4
2	A	801	DTT	C2-C3-C4-S4
2	A	801	DTT	O3-C3-C4-S4
2	B	801	DTT	C1-C2-C3-O3
2	B	801	DTT	C1-C2-C3-C4
2	B	801	DTT	O2-C2-C3-O3
2	B	801	DTT	O2-C2-C3-C4
2	B	801	DTT	C2-C3-C4-S4
2	B	801	DTT	O3-C3-C4-S4
4	B	806	GOL	O1-C1-C2-C3
4	B	806	GOL	O1-C1-C2-O2
6	A	813	PEG	O2-C3-C4-O4
6	A	814	PEG	O2-C3-C4-O4
6	B	809	PEG	O2-C3-C4-O4
6	B	811	PEG	O2-C3-C4-O4
6	B	810	PEG	O1-C1-C2-O2
6	B	810	PEG	O2-C3-C4-O4

*Continued on next page...*

*Continued from previous page...*

Mol	Chain	Res	Type	Atoms
5	A	810	EDO	O1-C1-C2-O2
5	A	811	EDO	O1-C1-C2-O2
6	A	813	PEG	C4-C3-O2-C2
6	B	811	PEG	C1-C2-O2-C3
6	A	814	PEG	C4-C3-O2-C2
6	B	810	PEG	C1-C2-O2-C3
6	B	810	PEG	C4-C3-O2-C2
6	A	812	PEG	O1-C1-C2-O2
5	A	809	EDO	O1-C1-C2-O2
6	B	811	PEG	O1-C1-C2-O2
5	A	808	EDO	O1-C1-C2-O2

There are no ring outliers.

10 monomers are involved in 18 short contacts:

Mol	Chain	Res	Type	Clashes	Symm-Clashes
5	A	808	EDO	1	0
6	A	814	PEG	4	0
6	B	809	PEG	1	0
6	B	811	PEG	2	0
2	B	801	DTT	2	0
2	A	801	DTT	2	0
4	A	806	GOL	1	0
6	A	812	PEG	1	0
5	A	810	EDO	2	0
6	A	813	PEG	4	0

## 5.7 Other polymers [i](#)

There are no such residues in this entry.

## 5.8 Polymer linkage issues [i](#)

There are no chain breaks in this entry.

## 6 Fit of model and data

### 6.1 Protein, DNA and RNA chains

In the following table, the column labelled ‘#RSRZ > 2’ contains the number (and percentage) of RSRZ outliers, followed by percent RSRZ outliers for the chain as percentile scores relative to all X-ray entries and entries of similar resolution. The OWAB column contains the minimum, median, 95<sup>th</sup> percentile and maximum values of the occupancy-weighted average B-factor per residue. The column labelled ‘Q < 0.9’ lists the number of (and percentage) of residues with an average occupancy less than 0.9.

Mol	Chain	Analysed	<RSRZ>	#RSRZ>2	OWAB(Å <sup>2</sup> )	Q<0.9
1	A	756/785 (96%)	-0.31	15 (1%) 65 71	15, 26, 43, 122	5 (0%)
1	B	755/785 (96%)	-0.46	11 (1%) 73 79	14, 23, 40, 123	4 (0%)
All	All	1511/1570 (96%)	-0.39	26 (1%) 70 76	14, 25, 41, 123	9 (0%)

All (26) RSRZ outliers are listed below:

Mol	Chain	Res	Type	RSRZ
1	A	495	ILE	7.0
1	B	499	ALA	6.8
1	B	500	SER	6.6
1	A	497	THR	6.1
1	A	499	ALA	6.1
1	B	498	ASP	5.6
1	A	496	GLU	5.6
1	A	498	ASP	5.5
1	B	497	THR	5.5
1	A	501	ASP	5.4
1	A	500	SER	5.2
1	B	495	ILE	5.1
1	B	501	ASP	4.6
1	B	496	GLU	4.6
1	A	493	ASN	4.1
1	A	30	ASN	4.1
1	A	31	GLN	3.4
1	A	494	GLU	3.0
1	A	492	ASN	2.6
1	B	493	ASN	2.6
1	B	502	GLU	2.4
1	B	494	GLU	2.3
1	B	492	ASN	2.2
1	A	488	GLY	2.1

*Continued on next page...*

*Continued from previous page...*

Mol	Chain	Res	Type	RSRZ
1	A	489	ASP	2.1
1	A	490	GLU	2.0

## 6.2 Non-standard residues in protein, DNA, RNA chains [i](#)

There are no non-standard protein/DNA/RNA residues in this entry.

## 6.3 Carbohydrates [i](#)

There are no monosaccharides in this entry.

## 6.4 Ligands [i](#)

In the following table, the Atoms column lists the number of modelled atoms in the group and the number defined in the chemical component dictionary. The B-factors column lists the minimum, median, 95<sup>th</sup> percentile and maximum values of B factors of atoms in the group. The column labelled 'Q<0.9' lists the number of atoms with occupancy less than 0.9.

Mol	Type	Chain	Res	Atoms	RSCC	RSR	B-factors(Å <sup>2</sup> )	Q<0.9
6	PEG	A	814	7/7	0.78	0.26	22,26,32,42	7
5	EDO	A	810	4/4	0.80	0.22	33,38,49,58	0
5	EDO	A	808	4/4	0.83	0.22	35,38,42,45	0
6	PEG	A	812	7/7	0.84	0.24	30,36,40,40	7
6	PEG	B	809	7/7	0.84	0.21	24,30,37,53	7
6	PEG	B	811	7/7	0.84	0.27	36,42,45,45	0
5	EDO	B	808	4/4	0.85	0.16	39,42,44,45	0
2	DTT	B	801	8/8	0.86	0.18	16,34,57,62	0
2	DTT	A	801	8/8	0.86	0.21	26,35,56,58	0
5	EDO	A	809	4/4	0.88	0.22	35,43,50,52	0
6	PEG	B	810	7/7	0.89	0.17	31,37,45,47	0
5	EDO	A	811	4/4	0.90	0.16	37,42,43,45	0
4	GOL	B	806	6/6	0.91	0.18	26,32,39,41	0
6	PEG	A	813	7/7	0.91	0.19	29,34,35,45	0
4	GOL	B	805	6/6	0.91	0.21	32,37,43,45	0
4	GOL	A	806	6/6	0.92	0.23	35,39,46,51	0
3	MG	A	804	1/1	0.93	0.26	43,43,43,43	0
4	GOL	A	805	6/6	0.93	0.16	27,30,31,32	0
5	EDO	A	807	4/4	0.95	0.26	35,36,41,43	0
3	MG	B	804	1/1	0.96	0.04	24,24,24,24	0
5	EDO	B	807	4/4	0.96	0.11	29,33,35,40	0

*Continued on next page...*

*Continued from previous page...*

Mol	Type	Chain	Res	Atoms	RSCC	RSR	B-factors( $\text{\AA}^2$ )	Q<0.9
4	GOL	A	815	6/6	0.96	0.18	27,29,32,33	0
3	MG	A	803	1/1	0.98	0.02	23,23,23,23	0
7	BEN	B	802	9/9	0.98	0.11	17,19,26,30	0
3	MG	A	802	1/1	0.99	0.24	13,13,13,13	0
3	MG	B	803	1/1	0.99	0.18	7,7,7,7	0

## 6.5 Other polymers [i](#)

There are no such residues in this entry.