



Full wwPDB X-ray Structure Validation Report ⓘ

Jun 24, 2024 – 03:02 PM EDT

PDB ID : 6ZAR
Title : As-isolated copper nitrite reductase from Bradyrhizobium sp. ORS 375 (two-domain) at 1.1 Å resolution (unrestrained, full matrix refinement by SHELX)
Authors : Rose, S.L.; Antonyuk, S.V.; Sasaki, D.; Yamashita, K.; Hirata, K.; Ueno, G.; Ago, H.; Eady, R.R.; Tosha, T.; Yamamoto, M.; Hasnain, S.S.
Deposited on : 2020-06-05
Resolution : 1.10 Å(reported)

This is a Full wwPDB X-ray Structure Validation Report for a publicly released PDB entry.

We welcome your comments at validation@mail.wwpdb.org

A user guide is available at

<https://www.wwpdb.org/validation/2017/XrayValidationReportHelp>

with specific help available everywhere you see the ⓘ symbol.

The types of validation reports are described at

<http://www.wwpdb.org/validation/2017/FAQs#types>.

The following versions of software and data (see [references ⓘ](#)) were used in the production of this report:

MolProbity : 4.02b-467
Mogul : 2022.3.0, CSD as543be (2022)
Xtriage (Phenix) : 1.20.1
EDS : 2.37.1
Percentile statistics : 20191225.v01 (using entries in the PDB archive December 25th 2019)
Refmac : 5.8.0158
CCP4 : 7.0.044 (Gargrove)
Ideal geometry (proteins) : Engh & Huber (2001)
Ideal geometry (DNA, RNA) : Parkinson et al. (1996)
Validation Pipeline (wwPDB-VP) : 2.37.1

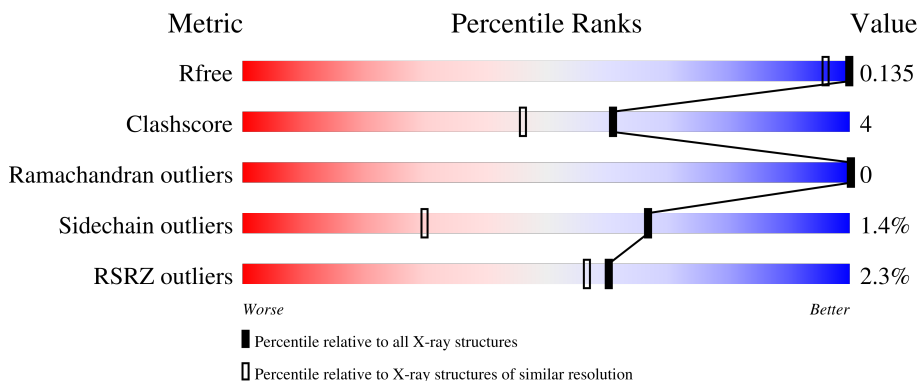
1 Overall quality at a glance

The following experimental techniques were used to determine the structure:

X-RAY DIFFRACTION

The reported resolution of this entry is 1.10 Å.

Percentile scores (ranging between 0-100) for global validation metrics of the entry are shown in the following graphic. The table shows the number of entries on which the scores are based.



Metric	Whole archive (#Entries)	Similar resolution (#Entries, resolution range(Å))
R_{free}	130704	1619 (1.14-1.06)
Clashscore	141614	1671 (1.14-1.06)
Ramachandran outliers	138981	1615 (1.14-1.06)
Sidechain outliers	138945	1613 (1.14-1.06)
RSRZ outliers	127900	1588 (1.14-1.06)

The table below summarises the geometric issues observed across the polymeric chains and their fit to the electron density. The red, orange, yellow and green segments of the lower bar indicate the fraction of residues that contain outliers for ≥ 3 , 2, 1 and 0 types of geometric quality criteria respectively. A grey segment represents the fraction of residues that are not modelled. The numeric value for each fraction is indicated below the corresponding segment, with a dot representing fractions $\leq 5\%$. The upper red bar (where present) indicates the fraction of residues that have poor fit to the electron density. The numeric value is given above the bar.

Mol	Chain	Length	Quality of chain
1	A	347	

The following table lists non-polymeric compounds, carbohydrate monomers and non-standard residues in protein, DNA, RNA chains that are outliers for geometric or electron-density-fit criteria:

Mol	Type	Chain	Res	Chirality	Geometry	Clashes	Electron density
4	GOL	A	415[A]	-	X	-	-

Continued on next page...

Continued from previous page...

Mol	Type	Chain	Res	Chirality	Geometry	Clashes	Electron density
4	GOL	A	416[A]	-	X	X	-

2 Entry composition

There are 6 unique types of molecules in this entry. The entry contains 3491 atoms, of which 0 are hydrogens and 0 are deuteriums.

In the tables below, the ZeroOcc column contains the number of atoms modelled with zero occupancy, the AltConf column contains the number of residues with at least one atom in alternate conformation and the Trace column contains the number of residues modelled with at most 2 atoms.

- Molecule 1 is a protein called Copper-containing nitrite reductase.

Mol	Chain	Residues	Atoms					ZeroOcc	AltConf	Trace
			Total	C	N	O	S			
1	A	345	2739	1743	476	507	13	0	22	0

There are 7 discrepancies between the modelled and reference sequences:

Chain	Residue	Modelled	Actual	Comment	Reference
A	1	MET	-	initiating methionine	UNP H0SLX7
A	342	GLU	-	expression tag	UNP H0SLX7
A	343	ASN	-	expression tag	UNP H0SLX7
A	344	LEU	-	expression tag	UNP H0SLX7
A	345	TYR	-	expression tag	UNP H0SLX7
A	346	PHE	-	expression tag	UNP H0SLX7
A	347	GLN	-	expression tag	UNP H0SLX7

- Molecule 2 is COPPER (II) ION (three-letter code: CU) (formula: Cu) (labeled as "Ligand of Interest" by depositor).

Mol	Chain	Residues	Atoms		ZeroOcc	AltConf
2	A	2	Total	Cu	0	0
			2	2		

- Molecule 3 is SULFATE ION (three-letter code: SO4) (formula: O₄S).



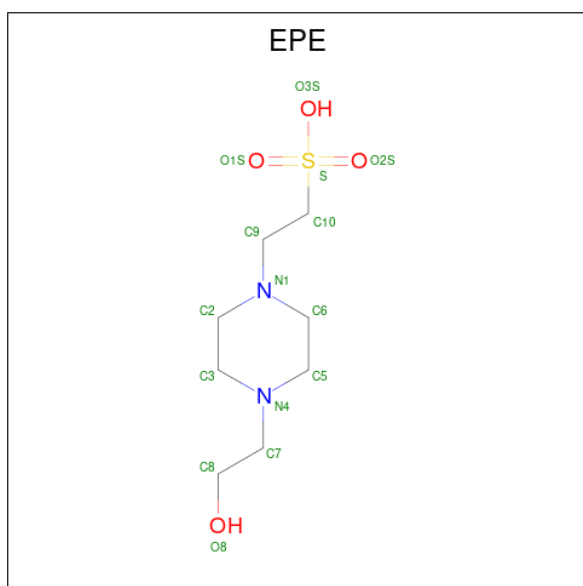
Mol	Chain	Residues	Atoms	ZeroOcc	AltConf
3	A	1	Total O S 5 4 1	0	1
3	A	1	Total O S 5 4 1	0	1
3	A	1	Total O S 5 4 1	0	1
3	A	1	Total O S 5 4 1	0	1
3	A	1	Total O S 5 4 1	0	1
3	A	1	Total O S 5 4 1	0	1
3	A	1	Total O S 5 4 1	0	1
3	A	1	Total O S 5 4 1	0	1
3	A	1	Total O S 5 4 1	0	1

- Molecule 4 is GLYCEROL (three-letter code: GOL) (formula: C₃H₈O₃).



Mol	Chain	Residues	Atoms	ZeroOcc	AltConf
4	A	1	Total C O 6 3 3	0	0
4	A	1	Total C O 6 3 3	0	1
4	A	1	Total C O 6 3 3	0	1

- Molecule 5 is 4-(2-HYDROXYETHYL)-1-PIPERAZINE ETHANESULFONIC ACID (three-letter code: EPE) (formula: C₈H₁₈N₂O₄S).



Mol	Chain	Residues	Atoms					ZeroOcc	AltConf
5	A	1	Total	C	N	O	S	0	1
			15	8	2	4	1		
5	A	1	Total	C	N	O	S	0	1
			15	8	2	4	1		

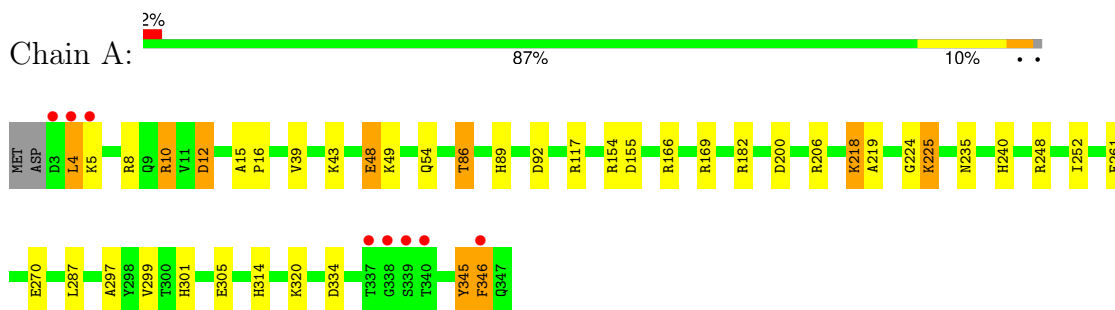
- Molecule 6 is water.

Mol	Chain	Residues	Atoms		ZeroOcc	AltConf
6	A	638	Total	O	0	144
			657	657		

3 Residue-property plots [i](#)

These plots are drawn for all protein, RNA, DNA and oligosaccharide chains in the entry. The first graphic for a chain summarises the proportions of the various outlier classes displayed in the second graphic. The second graphic shows the sequence view annotated by issues in geometry and electron density. Residues are color-coded according to the number of geometric quality criteria for which they contain at least one outlier: green = 0, yellow = 1, orange = 2 and red = 3 or more. A red dot above a residue indicates a poor fit to the electron density ($RSRZ > 2$). Stretches of 2 or more consecutive residues without any outlier are shown as a green connector. Residues present in the sample, but not in the model, are shown in grey.

- Molecule 1: Copper-containing nitrite reductase



4 Data and refinement statistics i

Property	Value	Source
Space group	P 21 3	Depositor
Cell constants a, b, c, α , β , γ	106.72Å 106.72Å 106.72Å 90.00° 90.00° 90.00°	Depositor
Resolution (Å)	30.00 – 1.10 47.72 – 1.10	Depositor EDS
% Data completeness (in resolution range)	99.7 (30.00-1.10) 99.8 (47.72-1.10)	Depositor EDS
R_{merge}	0.07	Depositor
R_{sym}	(Not available)	Depositor
$\langle I/\sigma(I) \rangle$ ¹	1.49 (at 1.10Å)	Xtrriage
Refinement program	SHELXL-97	Depositor
R, R_{free}	0.125 , 0.149 0.133 , 0.135	Depositor DCC
R_{free} test set	8255 reflections (5.08%)	wwPDB-VP
Wilson B-factor (Å ²)	9.9	Xtrriage
Anisotropy	0.000	Xtrriage
Bulk solvent k_{sol} (e/Å ³), B_{sol} (Å ²)	0.36 , 108.5	EDS
L-test for twinning ²	$\langle L \rangle = 0.50$, $\langle L^2 \rangle = 0.34$	Xtrriage
Estimated twinning fraction	0.021 for l,-k,h	Xtrriage
F_o, F_c correlation	0.98	EDS
Total number of atoms	3491	wwPDB-VP
Average B, all atoms (Å ²)	16.0	wwPDB-VP

Xtrriage's analysis on translational NCS is as follows: *The largest off-origin peak in the Patterson function is 3.16% of the height of the origin peak. No significant pseudotranslation is detected.*

¹Intensities estimated from amplitudes.

²Theoretical values of $\langle |L| \rangle$, $\langle L^2 \rangle$ for acentric reflections are 0.5, 0.333 respectively for untwinned datasets, and 0.375, 0.2 for perfectly twinned datasets.

5 Model quality i

5.1 Standard geometry i

Bond lengths and bond angles in the following residue types are not validated in this section: CU, EPE, SO4, GOL

The Z score for a bond length (or angle) is the number of standard deviations the observed value is removed from the expected value. A bond length (or angle) with $|Z| > 5$ is considered an outlier worth inspection. RMSZ is the root-mean-square of all Z scores of the bond lengths (or angles).

Mol	Chain	Bond lengths		Bond angles	
		RMSZ	# Z >5	RMSZ	# Z >5
1	A	0.78	0/2884	1.32	40/3914 (1.0%)

Chiral center outliers are detected by calculating the chiral volume of a chiral center and verifying if the center is modelled as a planar moiety or with the opposite hand. A planarity outlier is detected by checking planarity of atoms in a peptide group, atoms in a mainchain group or atoms of a sidechain that are expected to be planar.

Mol	Chain	#Chirality outliers	#Planarity outliers
1	A	0	2

There are no bond length outliers.

All (40) bond angle outliers are listed below:

Mol	Chain	Res	Type	Atoms	Z	Observed(°)	Ideal(°)
1	A	117	ARG	NE-CZ-NH1	-15.82	112.39	120.30
1	A	182	ARG	NE-CZ-NH1	12.05	126.32	120.30
1	A	169[A]	ARG	NE-CZ-NH2	-10.40	115.10	120.30
1	A	169[B]	ARG	NE-CZ-NH2	-10.40	115.10	120.30
1	A	166	ARG	NE-CZ-NH1	-10.29	115.16	120.30
1	A	117	ARG	NE-CZ-NH2	9.84	125.22	120.30
1	A	48[A]	GLU	OE1-CD-OE2	-9.10	112.39	123.30
1	A	48[B]	GLU	OE1-CD-OE2	-9.10	112.39	123.30
1	A	48[A]	GLU	CG-CD-OE2	8.83	135.95	118.30
1	A	48[B]	GLU	CG-CD-OE2	8.83	135.95	118.30
1	A	92[A]	ASP	CB-CG-OD2	-8.34	110.79	118.30
1	A	92[B]	ASP	CB-CG-OD2	-8.34	110.79	118.30
1	A	346	PHE	CB-CG-CD2	-8.25	115.02	120.80
1	A	154	ARG	CG-CD-NE	-8.15	94.69	111.80
1	A	154	ARG	NE-CZ-NH1	-7.76	116.42	120.30
1	A	334	ASP	CB-CG-OD1	7.72	125.25	118.30

Continued on next page...

Continued from previous page...

Mol	Chain	Res	Type	Atoms	Z	Observed(°)	Ideal(°)
1	A	154	ARG	CD-NE-CZ	7.67	134.34	123.60
1	A	240	HIS	CG-ND1-CE1	7.46	118.64	108.20
1	A	12	ASP	CB-CG-OD1	7.11	124.70	118.30
1	A	206	ARG	NE-CZ-NH2	-6.89	116.86	120.30
1	A	155	ASP	CB-CG-OD1	6.70	124.33	118.30
1	A	182	ARG	NH1-CZ-NH2	-6.62	112.12	119.40
1	A	10	ARG	NE-CZ-NH2	6.37	123.48	120.30
1	A	345	TYR	CB-CG-CD1	6.21	124.73	121.00
1	A	166	ARG	NH1-CZ-NH2	6.02	126.02	119.40
1	A	48[A]	GLU	CB-CG-CD	5.94	130.23	114.20
1	A	48[B]	GLU	CB-CG-CD	5.94	130.23	114.20
1	A	12	ASP	CB-CG-OD2	-5.72	113.15	118.30
1	A	8	ARG	NE-CZ-NH1	5.62	123.11	120.30
1	A	218[A]	LYS	CD-CE-NZ	5.44	124.21	111.70
1	A	218[B]	LYS	CD-CE-NZ	5.44	124.21	111.70
1	A	86	THR	CA-CB-CG2	-5.24	105.06	112.40
1	A	4	LEU	O-C-N	5.23	131.07	122.70
1	A	200	ASP	CB-CG-OD1	5.23	123.00	118.30
1	A	92[A]	ASP	CB-CG-OD1	5.17	122.95	118.30
1	A	92[B]	ASP	CB-CG-OD1	5.17	122.95	118.30
1	A	345	TYR	CD1-CE1-CZ	5.14	124.43	119.80
1	A	169[A]	ARG	CD-NE-CZ	5.13	130.78	123.60
1	A	169[B]	ARG	CD-NE-CZ	5.13	130.78	123.60
1	A	334	ASP	CB-CG-OD2	-5.12	113.69	118.30

There are no chirality outliers.

All (2) planarity outliers are listed below:

Mol	Chain	Res	Type	Group
1	A	299	VAL	Peptide
1	A	301	HIS	Peptide

5.2 Too-close contacts [i](#)

In the following table, the Non-H and H(model) columns list the number of non-hydrogen atoms and hydrogen atoms in the chain respectively. The H(added) column lists the number of hydrogen atoms added and optimized by MolProbity. The Clashes column lists the number of clashes within the asymmetric unit, whereas Symm-Clashes lists symmetry-related clashes.

Mol	Chain	Non-H	H(model)	H(added)	Clashes	Symm-Clashes
1	A	2739	0	2687	23	0

Continued on next page...

Continued from previous page...

Mol	Chain	Non-H	H(model)	H(added)	Clashes	Symm-Clashes
2	A	2	0	0	0	0
3	A	45	0	0	1	0
4	A	18	0	23	7	0
5	A	30	0	35	1	0
6	A	657	0	0	9	0
All	All	3491	0	2745	25	0

The all-atom clashscore is defined as the number of clashes found per 1000 atoms (including hydrogen atoms). The all-atom clashscore for this structure is 4.

All (25) close contacts within the same asymmetric unit are listed below, sorted by their clash magnitude.

Atom-1	Atom-2	Interatomic distance (Å)	Clash overlap (Å)
1:A:10:ARG:NH2	6:A:918[B]:HOH:O	1.72	1.21
3:A:411[A]:SO4:O1	6:A:501[A]:HOH:O	1.91	0.89
1:A:224:GLY:H	4:A:416[A]:GOL:H11	1.41	0.84
1:A:218[A]:LYS:HD3	6:A:1004:HOH:O	1.89	0.73
1:A:320[A]:LYS:HD2	6:A:612:HOH:O	1.91	0.70
1:A:224:GLY:N	4:A:416[A]:GOL:H11	2.12	0.64
1:A:86:THR:HG21	6:A:839:HOH:O	1.99	0.63
1:A:225[B]:LYS:HE2	6:A:703:HOH:O	1.99	0.62
1:A:345:TYR:HD1	4:A:415[A]:GOL:HO1	1.48	0.58
1:A:49:LYS:HE3	6:A:867:HOH:O	2.04	0.58
1:A:314:HIS:ND1	4:A:416[A]:GOL:H12	2.20	0.56
1:A:346:PHE:HA	4:A:415[A]:GOL:H32	1.87	0.56
1:A:48[B]:GLU:HG3	6:A:750[B]:HOH:O	2.09	0.52
1:A:224:GLY:H	4:A:416[A]:GOL:C1	2.18	0.52
5:A:413[A]:EPE:C7	5:A:413[A]:EPE:N1	2.73	0.51
1:A:305:GLU:OE2	6:A:502[A]:HOH:O	2.19	0.51
1:A:345:TYR:HD1	4:A:415[A]:GOL:O1	1.96	0.49
1:A:39:VAL:HG11	1:A:89:HIS:CD2	2.51	0.45
1:A:235:ASN:OD1	1:A:287[B]:LEU:HG	2.16	0.45
1:A:252:ILE:HD12	1:A:297:ALA:HB3	2.00	0.43
1:A:10:ARG:NH1	1:A:12:ASP:OD2	2.51	0.43
1:A:43[A]:LYS:HE3	1:A:54:GLN:NE2	2.34	0.43
1:A:218[B]:LYS:HG2	1:A:219:ALA:O	2.18	0.43
1:A:15:ALA:HA	1:A:16[B]:PRO:HD3	1.90	0.41
1:A:261[A]:GLU:OE2	1:A:270:GLU:OE1	2.39	0.40

There are no symmetry-related clashes.

5.3 Torsion angles [i](#)

5.3.1 Protein backbone [i](#)

In the following table, the Percentiles column shows the percent Ramachandran outliers of the chain as a percentile score with respect to all X-ray entries followed by that with respect to entries of similar resolution.

The Analysed column shows the number of residues for which the backbone conformation was analysed, and the total number of residues.

Mol	Chain	Analysed	Favoured	Allowed	Outliers	Percentiles	
1	A	360/347 (104%)	354 (98%)	6 (2%)	0	100	100

There are no Ramachandran outliers to report.

5.3.2 Protein sidechains [i](#)

In the following table, the Percentiles column shows the percent sidechain outliers of the chain as a percentile score with respect to all X-ray entries followed by that with respect to entries of similar resolution.

The Analysed column shows the number of residues for which the sidechain conformation was analysed, and the total number of residues.

Mol	Chain	Analysed	Rotameric	Outliers	Percentiles	
1	A	298/283 (105%)	293 (98%)	5 (2%)	60	23

All (5) residues with a non-rotameric sidechain are listed below:

Mol	Chain	Res	Type
1	A	4	LEU
1	A	5	LYS
1	A	225[A]	LYS
1	A	225[B]	LYS
1	A	248	ARG

Sometimes sidechains can be flipped to improve hydrogen bonding and reduce clashes. There are no such sidechains identified.

5.3.3 RNA [i](#)

There are no RNA molecules in this entry.

5.4 Non-standard residues in protein, DNA, RNA chains [i](#)

There are no non-standard protein/DNA/RNA residues in this entry.

5.5 Carbohydrates [i](#)

There are no monosaccharides in this entry.

5.6 Ligand geometry [i](#)

Of 16 ligands modelled in this entry, 2 are monoatomic - leaving 14 for Mogul analysis.

In the following table, the Counts columns list the number of bonds (or angles) for which Mogul statistics could be retrieved, the number of bonds (or angles) that are observed in the model and the number of bonds (or angles) that are defined in the Chemical Component Dictionary. The Link column lists molecule types, if any, to which the group is linked. The Z score for a bond length (or angle) is the number of standard deviations the observed value is removed from the expected value. A bond length (or angle) with $|Z| > 2$ is considered an outlier worth inspection. RMSZ is the root-mean-square of all Z scores of the bond lengths (or angles).

Mol	Type	Chain	Res	Link	Bond lengths			Bond angles		
					Counts	RMSZ	# Z > 2	Counts	RMSZ	# Z > 2
3	SO4	A	411[A]	-	4,4,4	0.63	0	6,6,6	0.19	0
3	SO4	A	406[A]	-	4,4,4	0.62	0	6,6,6	0.09	0
3	SO4	A	407[A]	-	4,4,4	0.53	0	6,6,6	0.14	0
3	SO4	A	408[B]	-	4,4,4	0.65	0	6,6,6	0.14	0
3	SO4	A	410[A]	-	4,4,4	0.66	0	6,6,6	0.19	0
4	GOL	A	415[A]	-	5,5,5	0.66	0	5,5,5	1.46	2 (40%)
3	SO4	A	409[A]	-	4,4,4	0.53	0	6,6,6	0.42	0
4	GOL	A	416[A]	-	5,5,5	1.49	1 (20%)	5,5,5	3.31	3 (60%)
5	EPE	A	413[A]	-	15,15,15	1.54	4 (26%)	19,20,20	2.71	4 (21%)
3	SO4	A	403[A]	-	4,4,4	0.64	0	6,6,6	0.16	0
5	EPE	A	414[A]	-	15,15,15	1.38	3 (20%)	19,20,20	1.47	3 (15%)
4	GOL	A	412	-	5,5,5	0.90	0	5,5,5	2.24	3 (60%)
3	SO4	A	404[A]	-	4,4,4	0.67	0	6,6,6	0.15	0
3	SO4	A	405[A]	-	4,4,4	0.60	0	6,6,6	0.14	0

In the following table, the Chirals column lists the number of chiral outliers, the number of chiral centers analysed, the number of these observed in the model and the number defined in the Chemical Component Dictionary. Similar counts are reported in the Torsion and Rings columns. '-' means no outliers of that kind were identified.

Mol	Type	Chain	Res	Link	Chirals	Torsions	Rings
4	GOL	A	416[A]	-	-	2/4/4/4	-
4	GOL	A	415[A]	-	-	4/4/4/4	-
5	EPE	A	413[A]	-	-	7/9/19/19	0/1/1/1
5	EPE	A	414[A]	-	-	0/9/19/19	0/1/1/1
4	GOL	A	412	-	-	2/4/4/4	-

All (8) bond length outliers are listed below:

Mol	Chain	Res	Type	Atoms	Z	Observed(Å)	Ideal(Å)
5	A	413[A]	EPE	O1S-S	2.95	1.53	1.45
5	A	413[A]	EPE	C7-N4	2.67	1.53	1.47
5	A	413[A]	EPE	C9-N1	-2.63	1.41	1.47
4	A	416[A]	GOL	O1-C1	-2.52	1.31	1.42
5	A	414[A]	EPE	O3S-S	-2.32	1.38	1.47
5	A	414[A]	EPE	O1S-S	2.27	1.51	1.45
5	A	414[A]	EPE	O2S-S	2.04	1.50	1.45
5	A	413[A]	EPE	C3-N4	2.04	1.52	1.46

All (15) bond angle outliers are listed below:

Mol	Chain	Res	Type	Atoms	Z	Observed(°)	Ideal(°)
5	A	413[A]	EPE	C10-C9-N1	7.46	140.60	112.36
5	A	413[A]	EPE	O1S-S-C10	-7.26	95.76	106.73
4	A	416[A]	GOL	O1-C1-C2	5.46	134.97	110.38
5	A	414[A]	EPE	O1S-S-C10	-4.49	99.94	106.73
4	A	412	GOL	O2-C2-C3	-3.58	94.35	109.18
5	A	413[A]	EPE	O3S-S-O2S	3.57	120.33	111.40
4	A	416[A]	GOL	C3-C2-C1	-3.33	99.58	111.80
4	A	416[A]	GOL	O2-C2-C1	-3.27	95.62	109.18
5	A	414[A]	EPE	C6-N1-C2	-2.49	103.47	108.84
4	A	412	GOL	C3-C2-C1	2.25	120.06	111.80
5	A	413[A]	EPE	O3S-S-O1S	2.18	116.86	111.40
4	A	415[A]	GOL	O3-C3-C2	2.15	120.06	110.38
5	A	414[A]	EPE	C5-C6-N1	-2.06	106.49	110.65
4	A	415[A]	GOL	O1-C1-C2	2.03	119.51	110.38
4	A	412	GOL	O3-C3-C2	-2.01	101.32	110.38

There are no chirality outliers.

All (15) torsion outliers are listed below:

Mol	Chain	Res	Type	Atoms
4	A	412	GOL	C1-C2-C3-O3
4	A	415[A]	GOL	C1-C2-C3-O3
4	A	416[A]	GOL	C1-C2-C3-O3
4	A	416[A]	GOL	O2-C2-C3-O3
5	A	413[A]	EPE	C10-C9-N1-C2
4	A	415[A]	GOL	O1-C1-C2-C3
4	A	412	GOL	O2-C2-C3-O3
4	A	415[A]	GOL	O2-C2-C3-O3
5	A	413[A]	EPE	C8-C7-N4-C3
5	A	413[A]	EPE	C9-C10-S-O3S
5	A	413[A]	EPE	C8-C7-N4-C5
4	A	415[A]	GOL	O1-C1-C2-O2
5	A	413[A]	EPE	C9-C10-S-O1S
5	A	413[A]	EPE	C9-C10-S-O2S
5	A	413[A]	EPE	N4-C7-C8-O8

There are no ring outliers.

4 monomers are involved in 9 short contacts:

Mol	Chain	Res	Type	Clashes	Symm-Clashes
3	A	411[A]	SO4	1	0
4	A	415[A]	GOL	3	0
4	A	416[A]	GOL	4	0
5	A	413[A]	EPE	1	0

5.7 Other polymers [i](#)

There are no such residues in this entry.

5.8 Polymer linkage issues [i](#)

There are no chain breaks in this entry.

6 Fit of model and data [i](#)

6.1 Protein, DNA and RNA chains [i](#)

In the following table, the column labelled ‘#RSRZ> 2’ contains the number (and percentage) of RSRZ outliers, followed by percent RSRZ outliers for the chain as percentile scores relative to all X-ray entries and entries of similar resolution. The OWAB column contains the minimum, median, 95th percentile and maximum values of the occupancy-weighted average B-factor per residue. The column labelled ‘Q< 0.9’ lists the number of (and percentage) of residues with an average occupancy less than 0.9.

Mol	Chain	Analysed	<RSRZ>	#RSRZ>2	OWAB(Å ²)	Q<0.9
1	A	345/347 (99%)	-0.03	8 (2%) 60 57	7, 10, 25, 46	17 (4%)

All (8) RSRZ outliers are listed below:

Mol	Chain	Res	Type	RSRZ
1	A	338	GLY	4.3
1	A	4	LEU	3.6
1	A	337	THR	3.1
1	A	5	LYS	2.9
1	A	3	ASP	2.8
1	A	346	PHE	2.6
1	A	339	SER	2.6
1	A	340	THR	2.5

6.2 Non-standard residues in protein, DNA, RNA chains [i](#)

There are no non-standard protein/DNA/RNA residues in this entry.

6.3 Carbohydrates [i](#)

There are no monosaccharides in this entry.

6.4 Ligands [i](#)

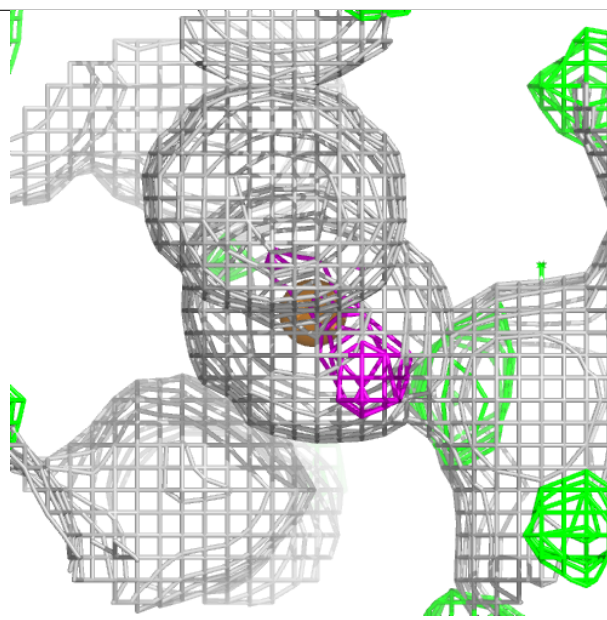
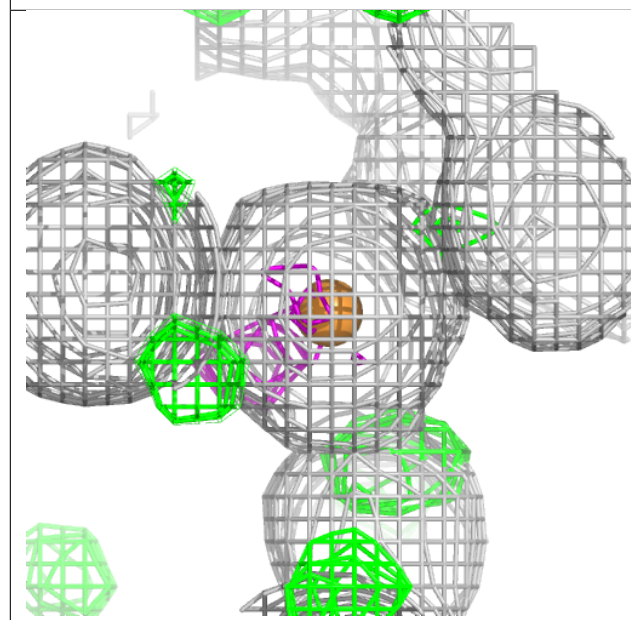
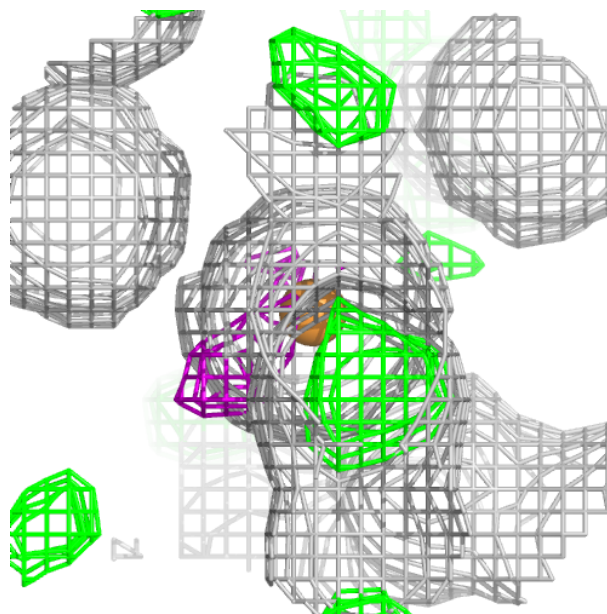
In the following table, the Atoms column lists the number of modelled atoms in the group and the number defined in the chemical component dictionary. The B-factors column lists the minimum, median, 95th percentile and maximum values of B factors of atoms in the group. The column labelled ‘Q< 0.9’ lists the number of atoms with occupancy less than 0.9.

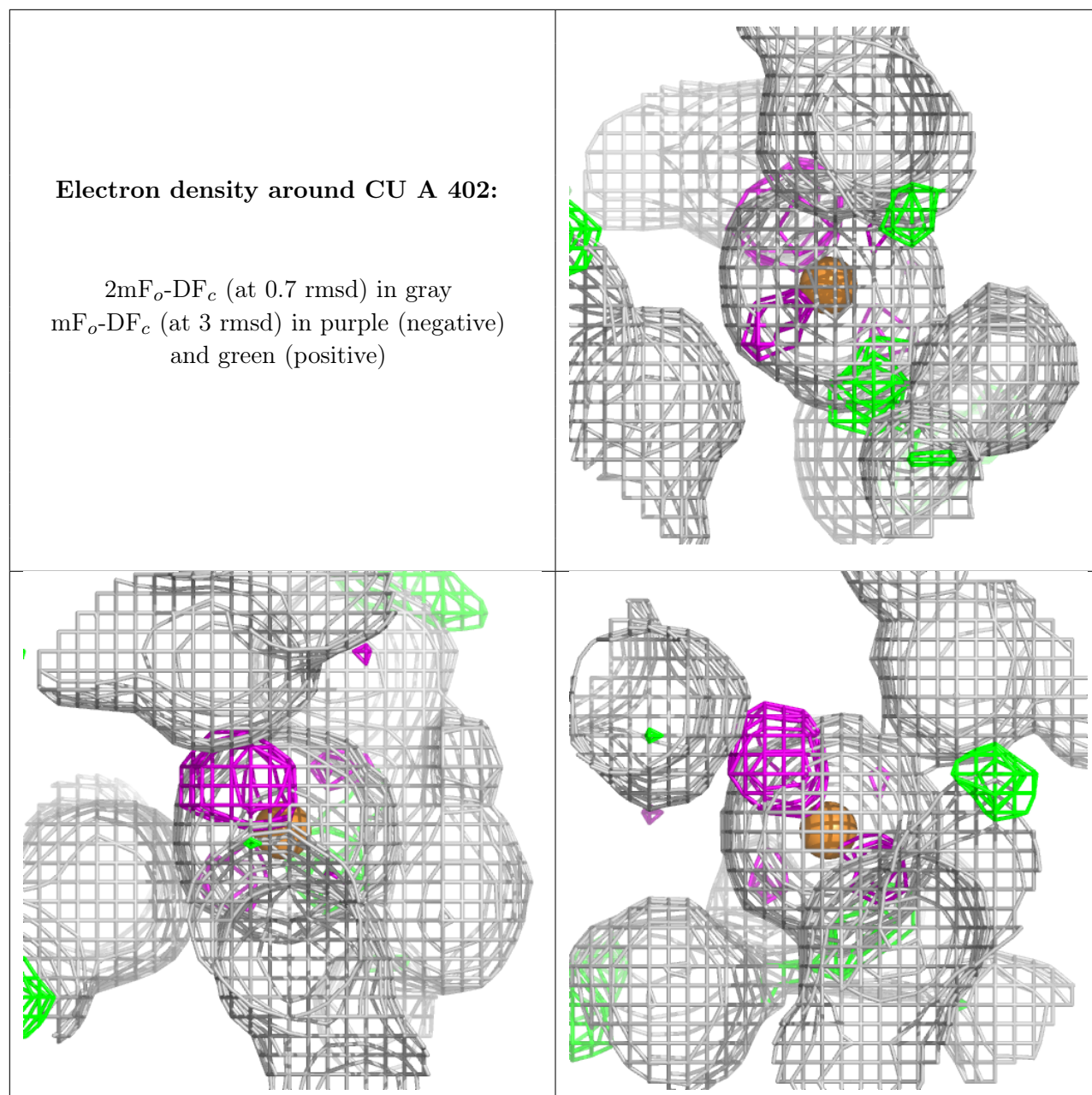
Mol	Type	Chain	Res	Atoms	RSCC	RSR	B-factors(\AA^2)	Q<0.9
4	GOL	A	412	6/6	0.87	0.16	42,47,55,56	0
4	GOL	A	415[A]	6/6	0.87	0.19	15,29,35,46	6
3	SO4	A	408[B]	5/5	0.90	0.14	30,30,42,53	5
4	GOL	A	416[A]	6/6	0.92	0.12	22,30,35,38	6
3	SO4	A	411[A]	5/5	0.93	0.16	11,15,34,39	5
3	SO4	A	410[A]	5/5	0.93	0.12	21,23,29,32	5
3	SO4	A	409[A]	5/5	0.94	0.12	20,21,24,24	5
5	EPE	A	413[A]	15/15	0.94	0.23	11,24,29,30	15
3	SO4	A	406[A]	5/5	0.95	0.13	24,29,41,44	5
3	SO4	A	404[A]	5/5	0.96	0.16	36,38,54,55	5
3	SO4	A	405[A]	5/5	0.97	0.21	30,31,51,53	5
3	SO4	A	403[A]	5/5	0.97	0.11	20,28,45,49	5
5	EPE	A	414[A]	15/15	0.97	0.09	11,12,15,22	15
3	SO4	A	407[A]	5/5	0.99	0.09	8,10,12,16	5
2	CU	A	401	1/1	1.00	0.04	9,9,9,9	0
2	CU	A	402	1/1	1.00	0.04	10,10,10,10	0

The following is a graphical depiction of the model fit to experimental electron density of all instances of the Ligand of Interest. In addition, ligands with molecular weight > 250 and outliers as shown on the geometry validation Tables will also be included. Each fit is shown from different orientation to approximate a three-dimensional view.

Electron density around CU A 401:

$2mF_o-DF_c$ (at 0.7 rmsd) in gray
 mF_o-DF_c (at 3 rmsd) in purple (negative)
and green (positive)





6.5 Other polymers [i](#)

There are no such residues in this entry.