



Full wwPDB X-ray Structure Validation Report ⓘ

Dec 12, 2023 – 02:42 pm GMT

PDB ID : 3ZBK
Title : Crystal structure of SCP2 thiolase from *Leishmania mexicana*: The C123A mutant.
Authors : Harijan, R.K.; Kiema, T.-R.; Weiss, M.S.; Michels, P.A.M.; Wierenga, R.K.
Deposited on : 2012-11-10
Resolution : 1.90 Å(reported)

This is a Full wwPDB X-ray Structure Validation Report for a publicly released PDB entry.

We welcome your comments at validation@mail.wwpdb.org

A user guide is available at

<https://www.wwpdb.org/validation/2017/XrayValidationReportHelp>

with specific help available everywhere you see the ⓘ symbol.

The types of validation reports are described at

<http://www.wwpdb.org/validation/2017/FAQs#types>.

The following versions of software and data (see [references ⓘ](#)) were used in the production of this report:

MolProbity : 4.02b-467
Mogul : 1.8.4, CSD as541be (2020)
Xtriage (Phenix) : 1.13
EDS : 2.36
Percentile statistics : 20191225.v01 (using entries in the PDB archive December 25th 2019)
Refmac : 5.8.0158
CCP4 : 7.0.044 (Gargrove)
Ideal geometry (proteins) : Engh & Huber (2001)
Ideal geometry (DNA, RNA) : Parkinson et al. (1996)
Validation Pipeline (wwPDB-VP) : 2.36

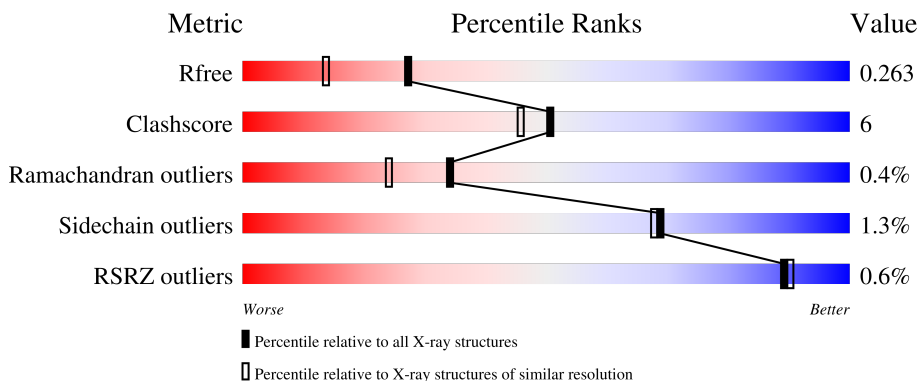
1 Overall quality at a glance

The following experimental techniques were used to determine the structure:

X-RAY DIFFRACTION

The reported resolution of this entry is 1.90 Å.

Percentile scores (ranging between 0-100) for global validation metrics of the entry are shown in the following graphic. The table shows the number of entries on which the scores are based.



Metric	Whole archive (#Entries)	Similar resolution (#Entries, resolution range(Å))
R_{free}	130704	6207 (1.90-1.90)
Clashscore	141614	6847 (1.90-1.90)
Ramachandran outliers	138981	6760 (1.90-1.90)
Sidechain outliers	138945	6760 (1.90-1.90)
RSRZ outliers	127900	6082 (1.90-1.90)

The table below summarises the geometric issues observed across the polymeric chains and their fit to the electron density. The red, orange, yellow and green segments of the lower bar indicate the fraction of residues that contain outliers for ≥ 3 , 2, 1 and 0 types of geometric quality criteria respectively. A grey segment represents the fraction of residues that are not modelled. The numeric value for each fraction is indicated below the corresponding segment, with a dot representing fractions $\leq 5\%$. The upper red bar (where present) indicates the fraction of residues that have poor fit to the electron density. The numeric value is given above the bar.

Mol	Chain	Length	Quality of chain
1	A	457	
1	B	457	

The following table lists non-polymeric compounds, carbohydrate monomers and non-standard residues in protein, DNA, RNA chains that are outliers for geometric or electron-density-fit criteria:

Mol	Type	Chain	Res	Chirality	Geometry	Clashes	Electron density
2	DMS	A	1442	-	-	X	-

2 Entry composition [i](#)

There are 5 unique types of molecules in this entry. The entry contains 7158 atoms, of which 0 are hydrogens and 0 are deuteriums.

In the tables below, the ZeroOcc column contains the number of atoms modelled with zero occupancy, the AltConf column contains the number of residues with at least one atom in alternate conformation and the Trace column contains the number of residues modelled with at most 2 atoms.

- Molecule 1 is a protein called 3-KETOACYL-COA THIOLASE-LIKE PROTEIN.

Mol	Chain	Residues	Atoms					ZeroOcc	AltConf	Trace
			Total	C	N	O	S			
1	A	430	3238	2019	567	626	26	0	3	0
1	B	430	3233	2016	566	625	26	0	2	0

There are 90 discrepancies between the modelled and reference sequences:

Chain	Residue	Modelled	Actual	Comment	Reference
A	-15	HIS	-	expression tag	UNP E9AW84
A	-14	HIS	-	expression tag	UNP E9AW84
A	-13	HIS	-	expression tag	UNP E9AW84
A	-12	HIS	-	expression tag	UNP E9AW84
A	-11	HIS	-	expression tag	UNP E9AW84
A	-10	HIS	-	expression tag	UNP E9AW84
A	-9	SER	-	expression tag	UNP E9AW84
A	-8	SER	-	expression tag	UNP E9AW84
A	-7	GLY	-	expression tag	UNP E9AW84
A	-6	LEU	-	expression tag	UNP E9AW84
A	-5	VAL	-	expression tag	UNP E9AW84
A	-4	PRO	-	expression tag	UNP E9AW84
A	-3	ARG	-	expression tag	UNP E9AW84
A	-2	GLY	-	expression tag	UNP E9AW84
A	-1	SER	-	expression tag	UNP E9AW84
A	0	HIS	-	expression tag	UNP E9AW84
A	6	LEU	MET	SEE REMARK 999	UNP E9AW84
A	12	ALA	THR	SEE REMARK 999	UNP E9AW84
A	31	PRO	LYS	SEE REMARK 999	UNP E9AW84
A	34	ILE	VAL	SEE REMARK 999	UNP E9AW84
A	45	LYS	GLN	SEE REMARK 999	UNP E9AW84
A	59	GLY	HIS	SEE REMARK 999	UNP E9AW84
A	61	MET	ILE	SEE REMARK 999	UNP E9AW84
A	63	HIS	ASN	SEE REMARK 999	UNP E9AW84
A	64	SER	VAL	SEE REMARK 999	UNP E9AW84

Continued on next page...

Continued from previous page...

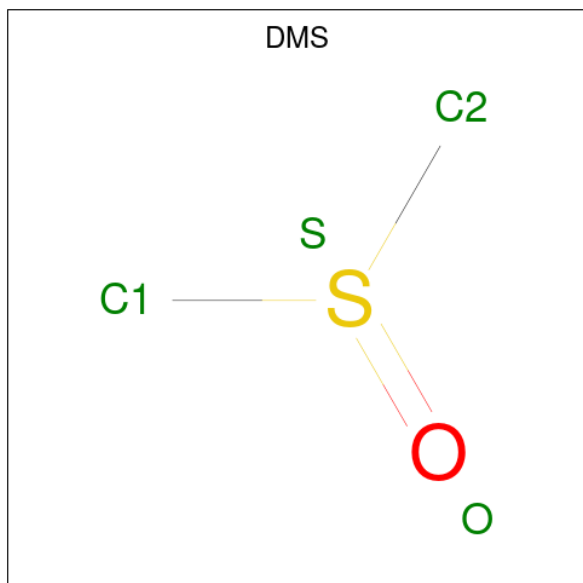
Chain	Residue	Modelled	Actual	Comment	Reference
A	65	GLY	SER	SEE REMARK 999	UNP E9AW84
A	67	SER	LYS	SEE REMARK 999	UNP E9AW84
A	69	ARG	LYS	SEE REMARK 999	UNP E9AW84
A	71	GLY	ASP	SEE REMARK 999	UNP E9AW84
A	107	SER	ALA	SEE REMARK 999	UNP E9AW84
A	112	MET	ILE	SEE REMARK 999	UNP E9AW84
A	123	ALA	CYS	engineered mutation	UNP E9AW84
A	134	MET	THR	SEE REMARK 999	UNP E9AW84
A	139	SER	ALA	SEE REMARK 999	UNP E9AW84
A	145	THR	VAL	SEE REMARK 999	UNP E9AW84
A	157	SER	THR	SEE REMARK 999	UNP E9AW84
A	176	GLN	LYS	SEE REMARK 999	UNP E9AW84
A	229	THR	SER	SEE REMARK 999	UNP E9AW84
A	268	VAL	ALA	SEE REMARK 999	UNP E9AW84
A	277	ARG	LYS	SEE REMARK 999	UNP E9AW84
A	327	ILE	VAL	SEE REMARK 999	UNP E9AW84
A	356	GLU	ASP	SEE REMARK 999	UNP E9AW84
A	368	ASP	GLU	SEE REMARK 999	UNP E9AW84
A	398	ILE	VAL	SEE REMARK 999	UNP E9AW84
A	410	GLU	GLY	SEE REMARK 999	UNP E9AW84
B	-15	HIS	-	expression tag	UNP E9AW84
B	-14	HIS	-	expression tag	UNP E9AW84
B	-13	HIS	-	expression tag	UNP E9AW84
B	-12	HIS	-	expression tag	UNP E9AW84
B	-11	HIS	-	expression tag	UNP E9AW84
B	-10	HIS	-	expression tag	UNP E9AW84
B	-9	SER	-	expression tag	UNP E9AW84
B	-8	SER	-	expression tag	UNP E9AW84
B	-7	GLY	-	expression tag	UNP E9AW84
B	-6	LEU	-	expression tag	UNP E9AW84
B	-5	VAL	-	expression tag	UNP E9AW84
B	-4	PRO	-	expression tag	UNP E9AW84
B	-3	ARG	-	expression tag	UNP E9AW84
B	-2	GLY	-	expression tag	UNP E9AW84
B	-1	SER	-	expression tag	UNP E9AW84
B	0	HIS	-	expression tag	UNP E9AW84
B	6	LEU	MET	SEE REMARK 999	UNP E9AW84
B	12	ALA	THR	SEE REMARK 999	UNP E9AW84
B	31	PRO	LYS	SEE REMARK 999	UNP E9AW84
B	34	ILE	VAL	SEE REMARK 999	UNP E9AW84
B	45	LYS	GLN	SEE REMARK 999	UNP E9AW84
B	59	GLY	HIS	SEE REMARK 999	UNP E9AW84

Continued on next page...

Continued from previous page...

Chain	Residue	Modelled	Actual	Comment	Reference
B	61	MET	ILE	SEE REMARK 999	UNP E9AW84
B	63	HIS	ASN	SEE REMARK 999	UNP E9AW84
B	64	SER	VAL	SEE REMARK 999	UNP E9AW84
B	65	GLY	SER	SEE REMARK 999	UNP E9AW84
B	67	SER	LYS	SEE REMARK 999	UNP E9AW84
B	69	ARG	LYS	SEE REMARK 999	UNP E9AW84
B	71	GLY	ASP	SEE REMARK 999	UNP E9AW84
B	107	SER	ALA	SEE REMARK 999	UNP E9AW84
B	112	MET	ILE	SEE REMARK 999	UNP E9AW84
B	123	ALA	CYS	engineered mutation	UNP E9AW84
B	134	MET	THR	SEE REMARK 999	UNP E9AW84
B	139	SER	ALA	SEE REMARK 999	UNP E9AW84
B	145	THR	VAL	SEE REMARK 999	UNP E9AW84
B	157	SER	THR	SEE REMARK 999	UNP E9AW84
B	176	GLN	LYS	SEE REMARK 999	UNP E9AW84
B	229	THR	SER	SEE REMARK 999	UNP E9AW84
B	268	VAL	ALA	SEE REMARK 999	UNP E9AW84
B	277	ARG	LYS	SEE REMARK 999	UNP E9AW84
B	327	ILE	VAL	SEE REMARK 999	UNP E9AW84
B	356	GLU	ASP	SEE REMARK 999	UNP E9AW84
B	368	ASP	GLU	SEE REMARK 999	UNP E9AW84
B	398	ILE	VAL	SEE REMARK 999	UNP E9AW84
B	410	GLU	GLY	SEE REMARK 999	UNP E9AW84

- Molecule 2 is DIMETHYL SULFOXIDE (three-letter code: DMS) (formula: C₂H₆OS).

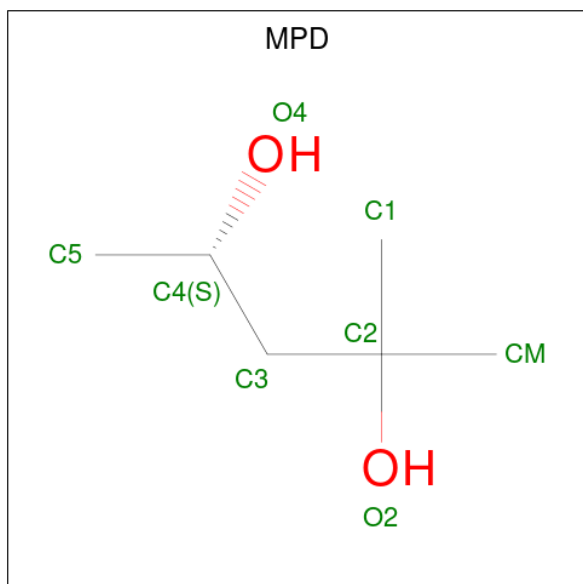


Mol	Chain	Residues	Atoms				ZeroOcc	AltConf
2	A	1	Total	C	O	S	0	0
			4	2	1	1		
2	A	1	Total	C	O	S	0	0
			4	2	1	1		
2	A	1	Total	C	O	S	0	0
			4	2	1	1		
2	A	1	Total	C	O	S	0	0
			4	2	1	1		
2	B	1	Total	C	O	S	0	0
			4	2	1	1		
2	B	1	Total	C	O	S	0	0
			4	2	1	1		
2	B	1	Total	C	O	S	0	0
			4	2	1	1		

- Molecule 3 is CHLORIDE ION (three-letter code: CL) (formula: Cl).

Mol	Chain	Residues	Atoms		ZeroOcc	AltConf
3	A	1	Total	Cl	0	0
			1	1		
3	B	1	Total	Cl	0	0
			1	1		

- Molecule 4 is (4S)-2-METHYL-2,4-PENTANEDIOL (three-letter code: MPD) (formula: C₆H₁₄O₂).



Mol	Chain	Residues	Atoms			ZeroOcc	AltConf
4	B	1	Total	C	O	0	0
			8	6	2		

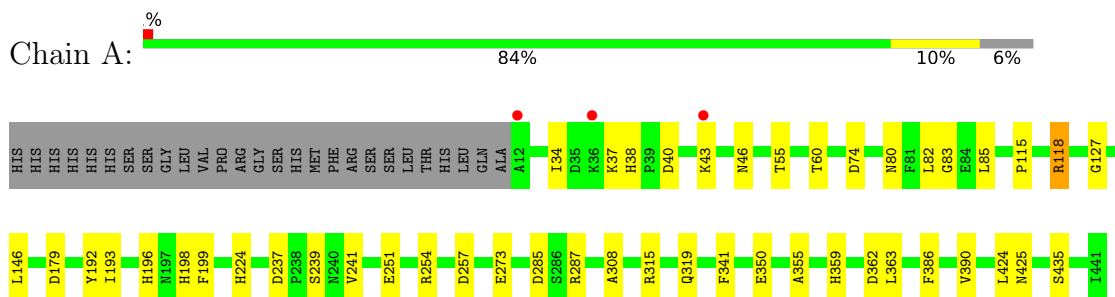
- Molecule 5 is water.

Mol	Chain	Residues	Atoms		ZeroOcc	AltConf
5	A	336	Total	O	0	0
			336	336		
5	B	313	Total	O	0	0
			313	313		

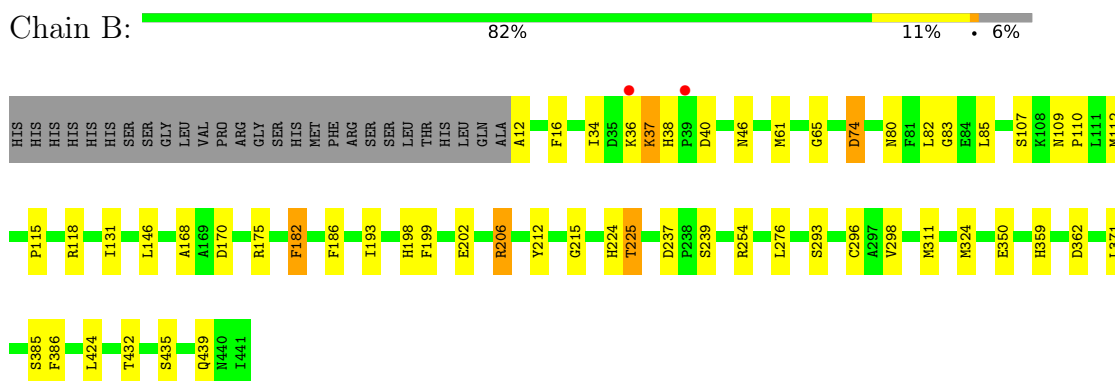
3 Residue-property plots [i](#)

These plots are drawn for all protein, RNA, DNA and oligosaccharide chains in the entry. The first graphic for a chain summarises the proportions of the various outlier classes displayed in the second graphic. The second graphic shows the sequence view annotated by issues in geometry and electron density. Residues are color-coded according to the number of geometric quality criteria for which they contain at least one outlier: green = 0, yellow = 1, orange = 2 and red = 3 or more. A red dot above a residue indicates a poor fit to the electron density ($RSRZ > 2$). Stretches of 2 or more consecutive residues without any outlier are shown as a green connector. Residues present in the sample, but not in the model, are shown in grey.

- Molecule 1: 3-KETOACYL-COA THIOLASE-LIKE PROTEIN



- Molecule 1: 3-KETOACYL-COA THIOLASE-LIKE PROTEIN



4 Data and refinement statistics

Property	Value	Source
Space group	P 65	Depositor
Cell constants a, b, c, α , β , γ	123.27Å 123.27Å 132.94Å 90.00° 90.00° 120.00°	Depositor
Resolution (Å)	106.75 – 1.90 56.42 – 1.90	Depositor EDS
% Data completeness (in resolution range)	99.6 (106.75-1.90) 99.6 (56.42-1.90)	Depositor EDS
R_{merge}	0.20	Depositor
R_{sym}	(Not available)	Depositor
$\langle I/\sigma(I) \rangle$ ¹	4.27 (at 1.90Å)	Xtrriage
Refinement program	REFMAC 5.6.0117	Depositor
R, R_{free}	0.221 , 0.259 0.226 , 0.263	Depositor DCC
R_{free} test set	4508 reflections (5.03%)	wwPDB-VP
Wilson B-factor (Å ²)	14.2	Xtrriage
Anisotropy	0.177	Xtrriage
Bulk solvent k_{sol} (e/Å ³), B_{sol} (Å ²)	0.36 , 48.6	EDS
L-test for twinning ²	$\langle L \rangle = 0.46$, $\langle L^2 \rangle = 0.28$	Xtrriage
Estimated twinning fraction	0.064 for h,-h-k,-l	Xtrriage
F_o, F_c correlation	0.92	EDS
Total number of atoms	7158	wwPDB-VP
Average B, all atoms (Å ²)	20.0	wwPDB-VP

Xtrriage's analysis on translational NCS is as follows: *The largest off-origin peak in the Patterson function is 3.28% of the height of the origin peak. No significant pseudotranslation is detected.*

¹Intensities estimated from amplitudes.

²Theoretical values of $\langle |L| \rangle$, $\langle L^2 \rangle$ for acentric reflections are 0.5, 0.333 respectively for untwinned datasets, and 0.375, 0.2 for perfectly twinned datasets.

5 Model quality [i](#)

5.1 Standard geometry [i](#)

Bond lengths and bond angles in the following residue types are not validated in this section: MPD, DMS, CL

The Z score for a bond length (or angle) is the number of standard deviations the observed value is removed from the expected value. A bond length (or angle) with $|Z| > 5$ is considered an outlier worth inspection. RMSZ is the root-mean-square of all Z scores of the bond lengths (or angles).

Mol	Chain	Bond lengths		Bond angles	
		RMSZ	# Z >5	RMSZ	# Z >5
1	A	0.91	0/3300	0.93	4/4449 (0.1%)
1	B	0.96	2/3292 (0.1%)	0.98	8/4437 (0.2%)
All	All	0.93	2/6592 (0.0%)	0.95	12/8886 (0.1%)

All (2) bond length outliers are listed below:

Mol	Chain	Res	Type	Atoms	Z	Observed(Å)	Ideal(Å)
1	B	182	PHE	CB-CG	-5.37	1.42	1.51
1	B	212	TYR	CE2-CZ	-5.22	1.31	1.38

All (12) bond angle outliers are listed below:

Mol	Chain	Res	Type	Atoms	Z	Observed(°)	Ideal(°)
1	B	118	ARG	NE-CZ-NH2	-13.22	113.69	120.30
1	B	118	ARG	NE-CZ-NH1	10.71	125.65	120.30
1	A	118	ARG	NE-CZ-NH2	-10.42	115.09	120.30
1	A	118	ARG	NE-CZ-NH1	8.17	124.39	120.30
1	A	254	ARG	NE-CZ-NH1	6.69	123.65	120.30
1	B	206	ARG	NE-CZ-NH1	5.93	123.27	120.30
1	B	170	ASP	CB-CG-OD1	5.56	123.30	118.30
1	B	254	ARG	NE-CZ-NH2	-5.56	117.52	120.30
1	B	74	ASP	CB-CG-OD2	5.46	123.22	118.30
1	B	175	ARG	NE-CZ-NH1	5.46	123.03	120.30
1	B	254	ARG	NE-CZ-NH1	5.14	122.87	120.30
1	A	179	ASP	CB-CG-OD1	5.13	122.92	118.30

There are no chirality outliers.

There are no planarity outliers.

5.2 Too-close contacts [i](#)

In the following table, the Non-H and H(model) columns list the number of non-hydrogen atoms and hydrogen atoms in the chain respectively. The H(added) column lists the number of hydrogen atoms added and optimized by MolProbity. The Clashes column lists the number of clashes within the asymmetric unit, whereas Symm-Clashes lists symmetry-related clashes.

Mol	Chain	Non-H	H(model)	H(added)	Clashes	Symm-Clashes
1	A	3238	0	3219	31	0
1	B	3233	0	3213	43	0
2	A	16	0	24	4	0
2	B	12	0	18	0	0
3	A	1	0	0	0	0
3	B	1	0	0	0	0
4	B	8	0	14	1	0
5	A	336	0	0	6	0
5	B	313	0	0	8	0
All	All	7158	0	6488	74	0

The all-atom clashscore is defined as the number of clashes found per 1000 atoms (including hydrogen atoms). The all-atom clashscore for this structure is 6.

All (74) close contacts within the same asymmetric unit are listed below, sorted by their clash magnitude.

Atom-1	Atom-2	Interatomic distance (Å)	Clash overlap (Å)
1:B:34:ILE:H	1:B:46:ASN:HD21	1.17	0.93
1:A:34:ILE:H	1:A:46:ASN:HD21	1.16	0.89
1:B:202:GLU:OE2	1:B:206:ARG:NH2	2.11	0.82
1:B:82:LEU:HD22	1:B:85:LEU:HD12	1.66	0.76
1:A:193:ILE:HG23	1:A:198:HIS:HB3	1.70	0.74
1:B:224:HIS:NE2	5:B:2193:HOH:O	2.22	0.72
2:A:1442:DMS:H23	1:B:131:ILE:HD12	1.73	0.70
1:A:82:LEU:HD22	1:A:85:LEU:HD12	1.75	0.68
1:B:193:ILE:HG23	1:B:198:HIS:HB3	1.79	0.64
1:A:80:ASN:HD21	1:A:83:GLY:H	1.45	0.63
1:B:80:ASN:HD21	1:B:83:GLY:H	1.48	0.60
1:B:16:PHE:CD1	1:B:276:LEU:HD11	2.37	0.59
1:A:273:GLU:HG3	5:A:2004:HOH:O	2.04	0.58
1:B:12:ALA:N	5:B:2001:HOH:O	2.36	0.57
1:B:225:THR:CG2	1:B:225:THR:O	2.51	0.57
1:B:38:HIS:CD2	1:B:40:ASP:H	2.23	0.56
1:B:293:SER:HB2	1:B:324:MET:HE2	1.87	0.56
1:A:38:HIS:CD2	1:A:40:ASP:H	2.23	0.55

Continued on next page...

Continued from previous page...

Atom-1	Atom-2	Interatomic distance (Å)	Clash overlap (Å)
1:B:38:HIS:HD2	1:B:40:ASP:H	1.56	0.54
1:B:16:PHE:CG	1:B:276:LEU:HD11	2.43	0.54
1:A:355:ALA:HB2	1:A:363:LEU:HD12	1.90	0.53
1:B:168:ALA:HB3	1:B:182:PHE:CE2	2.43	0.53
1:B:359:HIS:HD2	1:B:362:ASP:OD2	1.90	0.53
1:A:55:THR:HG21	5:A:2008:HOH:O	2.10	0.51
2:A:1442:DMS:H23	1:B:131:ILE:CD1	2.38	0.51
1:B:298:VAL:HG22	1:B:432:THR:HG23	1.92	0.51
1:B:193:ILE:HD13	1:B:199:PHE:CZ	2.46	0.50
1:A:241:VAL:HG13	5:A:2228:HOH:O	2.11	0.50
1:A:38:HIS:HD2	1:A:40:ASP:H	1.61	0.49
1:B:46:ASN:N	5:B:2039:HOH:O	2.30	0.49
1:B:198:HIS:HE1	1:B:350:GLU:OE1	1.94	0.49
1:B:61:MET:CE	1:B:146:LEU:HD13	2.43	0.49
1:B:110:PRO:HG3	5:B:2063:HOH:O	2.12	0.49
2:A:1442:DMS:H22	1:B:131:ILE:HB	1.95	0.48
1:B:38:HIS:CE1	5:B:2026:HOH:O	2.66	0.48
1:B:237:ASP:OD1	1:B:239:SER:OG	2.31	0.48
1:B:61:MET:CE	1:B:146:LEU:HD22	2.44	0.48
1:A:359:HIS:HD2	1:A:362:ASP:OD2	1.97	0.47
1:A:359:HIS:HE1	5:A:2313:HOH:O	1.98	0.47
1:A:196:HIS:HE1	5:A:2193:HOH:O	1.97	0.46
1:A:34:ILE:N	1:A:46:ASN:HD21	1.98	0.46
1:A:424:LEU:HD13	1:A:435:SER:HB2	1.95	0.46
1:A:224:HIS:NE2	5:A:2217:HOH:O	2.36	0.46
1:A:355:ALA:HB2	1:A:363:LEU:CD1	2.45	0.46
1:B:34:ILE:H	1:B:46:ASN:ND2	1.99	0.46
1:A:198:HIS:HE1	1:A:350:GLU:OE1	1.98	0.46
1:B:38:HIS:HE1	5:B:2026:HOH:O	1.97	0.46
1:B:131:ILE:CD1	1:B:296:CYS:HB2	2.46	0.46
1:A:192:TYR:CD1	1:A:308:ALA:HB3	2.51	0.45
1:A:60:THR:HG21	1:A:146:LEU:HD11	1.99	0.45
1:A:60:THR:HG21	1:A:146:LEU:CD1	2.47	0.45
1:A:285:ASP:OD1	1:A:287:ARG:HG2	2.17	0.45
1:A:192:TYR:O	1:A:196:HIS:HD2	2.01	0.44
1:B:65:GLY:HA3	4:B:1443:MPD:H53	1.99	0.44
1:B:225:THR:O	1:B:225:THR:HG23	2.18	0.44
1:B:215:GLY:HA3	1:B:385:SER:OG	2.18	0.43
1:A:257:ASP:O	1:A:341:PHE:HA	2.18	0.43
1:B:359:HIS:CD2	1:B:362:ASP:OD2	2.71	0.43
1:A:34:ILE:H	1:A:46:ASN:ND2	1.97	0.43

Continued on next page...

Continued from previous page...

Atom-1	Atom-2	Interatomic distance (Å)	Clash overlap (Å)
1:A:193:ILE:HD13	1:A:199:PHE:CZ	2.54	0.42
1:B:61:MET:HE1	1:B:146:LEU:HD22	2.02	0.42
1:A:237:ASP:OD1	1:A:239:SER:OG	2.35	0.42
1:B:74:ASP:O	1:B:115:PRO:HD2	2.19	0.42
1:B:225:THR:CG2	5:B:2195:HOH:O	2.68	0.41
2:A:1442:DMS:H22	1:B:131:ILE:CG2	2.50	0.41
1:B:186:PHE:HE2	1:B:311:MET:CE	2.32	0.41
1:A:315:ARG:HG2	1:A:319:GLN:NE2	2.36	0.41
1:B:225:THR:HG21	5:B:2195:HOH:O	2.20	0.41
1:B:36:LYS:O	1:B:37:LYS:CB	2.69	0.40
1:B:109:ASN:HB3	1:B:112:MET:HG2	2.03	0.40
1:A:127:GLY:HA3	1:A:425:ASN:HD22	1.86	0.40
1:B:424:LEU:HD13	1:B:435:SER:HB2	2.03	0.40
1:A:74:ASP:O	1:A:115:PRO:HD2	2.21	0.40
1:A:80:ASN:HD21	1:A:83:GLY:N	2.14	0.40

There are no symmetry-related clashes.

5.3 Torsion angles [i](#)

5.3.1 Protein backbone [i](#)

In the following table, the Percentiles column shows the percent Ramachandran outliers of the chain as a percentile score with respect to all X-ray entries followed by that with respect to entries of similar resolution.

The Analysed column shows the number of residues for which the backbone conformation was analysed, and the total number of residues.

Mol	Chain	Analysed	Favoured	Allowed	Outliers	Percentiles	
1	A	431/457 (94%)	416 (96%)	13 (3%)	2 (0%)	29	18
1	B	430/457 (94%)	418 (97%)	11 (3%)	1 (0%)	47	38
All	All	861/914 (94%)	834 (97%)	24 (3%)	3 (0%)	34	31

All (3) Ramachandran outliers are listed below:

Mol	Chain	Res	Type
1	B	37	LYS
1	A	37	LYS
1	A	390	VAL

5.3.2 Protein sidechains [i](#)

In the following table, the Percentiles column shows the percent sidechain outliers of the chain as a percentile score with respect to all X-ray entries followed by that with respect to entries of similar resolution.

The Analysed column shows the number of residues for which the sidechain conformation was analysed, and the total number of residues.

Mol	Chain	Analysed	Rotameric	Outliers	Percentiles	
1	A	341/362 (94%)	337 (99%)	4 (1%)	71	70
1	B	340/362 (94%)	335 (98%)	5 (2%)	65	62
All	All	681/724 (94%)	672 (99%)	9 (1%)	69	68

All (9) residues with a non-rotameric sidechain are listed below:

Mol	Chain	Res	Type
1	A	43	LYS
1	A	118	ARG
1	A	251	GLU
1	A	386	PHE
1	B	107	SER
1	B	225	THR
1	B	371	LEU
1	B	386	PHE
1	B	439	GLN

Sometimes sidechains can be flipped to improve hydrogen bonding and reduce clashes. All (22) such sidechains are listed below:

Mol	Chain	Res	Type
1	A	38	HIS
1	A	46	ASN
1	A	58	GLN
1	A	63	HIS
1	A	80	ASN
1	A	153	GLN
1	A	196	HIS
1	A	198	HIS
1	A	316	GLN
1	A	319	GLN
1	A	359	HIS
1	A	425	ASN
1	B	38	HIS

Continued on next page...

Continued from previous page...

Mol	Chain	Res	Type
1	B	46	ASN
1	B	80	ASN
1	B	153	GLN
1	B	172	GLN
1	B	198	HIS
1	B	284	ASN
1	B	316	GLN
1	B	359	HIS
1	B	425	ASN

5.3.3 RNA [i](#)

There are no RNA molecules in this entry.

5.4 Non-standard residues in protein, DNA, RNA chains [i](#)

There are no non-standard protein/DNA/RNA residues in this entry.

5.5 Carbohydrates [i](#)

There are no monosaccharides in this entry.

5.6 Ligand geometry [i](#)

Of 10 ligands modelled in this entry, 2 are monoatomic - leaving 8 for Mogul analysis.

In the following table, the Counts columns list the number of bonds (or angles) for which Mogul statistics could be retrieved, the number of bonds (or angles) that are observed in the model and the number of bonds (or angles) that are defined in the Chemical Component Dictionary. The Link column lists molecule types, if any, to which the group is linked. The Z score for a bond length (or angle) is the number of standard deviations the observed value is removed from the expected value. A bond length (or angle) with $|Z| > 2$ is considered an outlier worth inspection. RMSZ is the root-mean-square of all Z scores of the bond lengths (or angles).

Mol	Type	Chain	Res	Link	Bond lengths			Bond angles		
					Counts	RMSZ	$\# Z > 2$	Counts	RMSZ	$\# Z > 2$
2	DMS	A	1444	-	3,3,3	0.51	0	3,3,3	0.74	0
2	DMS	A	1445	-	3,3,3	0.51	0	3,3,3	0.74	0
2	DMS	B	1444	-	3,3,3	0.43	0	3,3,3	0.78	0
2	DMS	A	1443	-	3,3,3	0.50	0	3,3,3	0.92	0
2	DMS	A	1442	-	3,3,3	0.49	0	3,3,3	0.84	0

Mol	Type	Chain	Res	Link	Bond lengths			Bond angles		
					Counts	RMSZ	# Z > 2	Counts	RMSZ	# Z > 2
2	DMS	B	1446	-	3,3,3	0.45	0	3,3,3	1.09	0
4	MPD	B	1443	-	7,7,7	0.70	0	9,10,10	1.38	2 (22%)
2	DMS	B	1442	-	3,3,3	0.43	0	3,3,3	0.76	0

In the following table, the Chirals column lists the number of chiral outliers, the number of chiral centers analysed, the number of these observed in the model and the number defined in the Chemical Component Dictionary. Similar counts are reported in the Torsion and Rings columns. '-' means no outliers of that kind were identified.

Mol	Type	Chain	Res	Link	Chirals	Torsions	Rings
4	MPD	B	1443	-	-	4/5/5/5	-

There are no bond length outliers.

All (2) bond angle outliers are listed below:

Mol	Chain	Res	Type	Atoms	Z	Observed(°)	Ideal(°)
4	B	1443	MPD	O2-C2-CM	-3.08	98.19	108.08
4	B	1443	MPD	C1-C2-C3	2.20	120.19	109.96

There are no chirality outliers.

All (4) torsion outliers are listed below:

Mol	Chain	Res	Type	Atoms
4	B	1443	MPD	C1-C2-C3-C4
4	B	1443	MPD	O2-C2-C3-C4
4	B	1443	MPD	CM-C2-C3-C4
4	B	1443	MPD	C2-C3-C4-O4

There are no ring outliers.

2 monomers are involved in 5 short contacts:

Mol	Chain	Res	Type	Clashes	Symm-Clashes
2	A	1442	DMS	4	0
4	B	1443	MPD	1	0

5.7 Other polymers [i](#)

There are no such residues in this entry.

5.8 Polymer linkage issues

There are no chain breaks in this entry.

6 Fit of model and data [i](#)

6.1 Protein, DNA and RNA chains [i](#)

In the following table, the column labelled ‘#RSRZ> 2’ contains the number (and percentage) of RSRZ outliers, followed by percent RSRZ outliers for the chain as percentile scores relative to all X-ray entries and entries of similar resolution. The OWAB column contains the minimum, median, 95th percentile and maximum values of the occupancy-weighted average B-factor per residue. The column labelled ‘Q< 0.9’ lists the number of (and percentage) of residues with an average occupancy less than 0.9.

Mol	Chain	Analysed	<RSRZ>	#RSRZ>2	OWAB(Å ²)	Q<0.9
1	A	430/457 (94%)	-0.24	3 (0%) 87 88	9, 18, 37, 62	0
1	B	430/457 (94%)	-0.27	2 (0%) 91 92	9, 16, 35, 63	0
All	All	860/914 (94%)	-0.25	5 (0%) 89 90	9, 17, 36, 63	0

All (5) RSRZ outliers are listed below:

Mol	Chain	Res	Type	RSRZ
1	A	43	LYS	2.7
1	B	39	PRO	2.5
1	A	12	ALA	2.4
1	A	36	LYS	2.2
1	B	36	LYS	2.2

6.2 Non-standard residues in protein, DNA, RNA chains [i](#)

There are no non-standard protein/DNA/RNA residues in this entry.

6.3 Carbohydrates [i](#)

There are no monosaccharides in this entry.

6.4 Ligands [i](#)

In the following table, the Atoms column lists the number of modelled atoms in the group and the number defined in the chemical component dictionary. The B-factors column lists the minimum, median, 95th percentile and maximum values of B factors of atoms in the group. The column labelled ‘Q< 0.9’ lists the number of atoms with occupancy less than 0.9.

Mol	Type	Chain	Res	Atoms	RSCC	RSR	B-factors(\AA^2)	Q<0.9
2	DMS	B	1446	4/4	0.72	0.31	48,55,61,65	0
2	DMS	B	1444	4/4	0.90	0.26	54,60,61,63	0
2	DMS	B	1442	4/4	0.90	0.15	48,50,50,56	0
2	DMS	A	1445	4/4	0.93	0.11	52,54,58,62	0
2	DMS	A	1444	4/4	0.93	0.17	56,57,62,62	0
2	DMS	A	1443	4/4	0.94	0.12	40,44,45,48	0
2	DMS	A	1442	4/4	0.94	0.20	43,45,48,52	0
4	MPD	B	1443	8/8	0.94	0.10	18,20,22,23	0
3	CL	B	1445	1/1	0.99	0.04	14,14,14,14	0
3	CL	A	1446	1/1	0.99	0.03	16,16,16,16	0

6.5 Other polymers [\(i\)](#)

There are no such residues in this entry.