



Full wwPDB EM Validation Report ⓘ

Dec 12, 2022 – 05:18 am GMT

PDB ID : 6ZBG
EMDB ID : EMD-11154
Title : Merozoite surface protein 1 (MSP-1) from Plasmodium falciparum, alternative conformation 4
Authors : Dijkman, P.M.; Kudryashev, M.
Deposited on : 2020-06-08
Resolution : 3.20 Å(reported)

This is a Full wwPDB EM Validation Report for a publicly released PDB entry.

We welcome your comments at validation@mail.wwpdb.org

A user guide is available at

<https://www.wwpdb.org/validation/2017/EMValidationReportHelp>

with specific help available everywhere you see the ⓘ symbol.

The types of validation reports are described at

<http://www.wwpdb.org/validation/2017/FAQs#types>.

The following versions of software and data (see [references ⓘ](#)) were used in the production of this report:

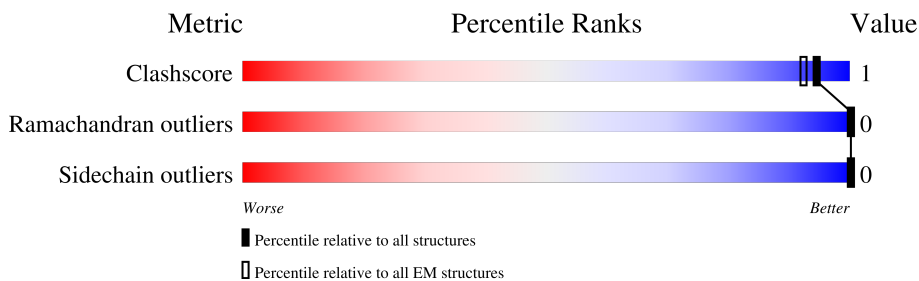
EMDB validation analysis : 0.0.1.dev43
MolProbity : 4.02b-467
Percentile statistics : 20191225.v01 (using entries in the PDB archive December 25th 2019)
MapQ : 1.9.9
Ideal geometry (proteins) : Engh & Huber (2001)
Ideal geometry (DNA, RNA) : Parkinson et al. (1996)
Validation Pipeline (wwPDB-VP) : 2.31.3

1 Overall quality at a glance

The following experimental techniques were used to determine the structure:
ELECTRON MICROSCOPY

The reported resolution of this entry is 3.20 Å.

Percentile scores (ranging between 0-100) for global validation metrics of the entry are shown in the following graphic. The table shows the number of entries on which the scores are based.



Metric	Whole archive (#Entries)	EM structures (#Entries)
Clashscore	158937	4297
Ramachandran outliers	154571	4023
Sidechain outliers	154315	3826

The table below summarises the geometric issues observed across the polymeric chains and their fit to the map. The red, orange, yellow and green segments of the bar indicate the fraction of residues that contain outliers for ≥ 3 , 2, 1 and 0 types of geometric quality criteria respectively. A grey segment represents the fraction of residues that are not modelled. The numeric value for each fraction is indicated below the corresponding segment, with a dot representing fractions $\leq 5\%$. The upper red bar (where present) indicates the fraction of residues that have poor fit to the EM map (all-atom inclusion $< 40\%$). The numeric value is given above the bar.

Mol	Chain	Length	Quality of chain
1	A	717	
2	B	174	
3	C	416	
4	D	376	

2 Entry composition i

There are 4 unique types of molecules in this entry. The entry contains 19534 atoms, of which 9902 are hydrogens and 0 are deuteriums.

In the tables below, the AltConf column contains the number of residues with at least one atom in alternate conformation and the Trace column contains the number of residues modelled with at most 2 atoms.

- Molecule 1 is a protein called Merozoite surface antigens.

Mol	Chain	Residues	Atoms					AltConf	Trace	
			Total	C	H	N	O			S
1	A	562	Total	C	H	N	O	S	0	0
			9553	3026	4849	779	890	9		

- Molecule 2 is a protein called Merozoite surface antigens.

Mol	Chain	Residues	Atoms					AltConf	Trace	
			Total	C	H	N	O			S
2	B	112	Total	C	H	N	O	S	0	0
			1901	616	950	147	182	6		

There is a discrepancy between the modelled and reference sequences:

Chain	Residue	Modelled	Actual	Comment	Reference
B	785	GLN	HIS	conflict	UNP M1V901

- Molecule 3 is a protein called Merozoite surface protein-1.

Mol	Chain	Residues	Atoms					AltConf	Trace	
			Total	C	H	N	O			S
3	C	285	Total	C	H	N	O	S	0	0
			4679	1463	2382	385	447	2		

- Molecule 4 is a protein called Merozoite surface protein 1.

Mol	Chain	Residues	Atoms					AltConf	Trace	
			Total	C	H	N	O			S
4	D	201	Total	C	H	N	O	S	0	0
			3401	1089	1721	266	323	2		

F1014
N1015
V1105
F1113
A1242
LYS
VAL
THR
THR
VAL
VAL
THR
THR
PRO
PRO
GLN
PRO
ASP
VAL
THR
PRO
TYR
SER
PRO
LEU
SER
VAL
VAL
ARG
VAL
THR
THR
SER
GLY
GLY
THR
LYS
GLU
THR
THR
ILE
PRO
THR
SER
GLY
SER
SER
LEU
LEU
THR
GLU
GLN

ASN
TYR
ASP
GLU
GLU
ASP
ASP
SER
SER
LEU
VAL
VAL
THR
LEU
PRO
ILE
PHE
GLY
GLY
SER
SER
GLU
ASP
ASP
ASN
VAL
THR
TYR
LEU
ASP
LEU
VAL
VAL
THR
GLY
GLU

● Molecule 4: Merozoite surface protein 1



ALA
ILE
SER
VAL
THR
MET
ASP
ASN
ILE
L1336
V1345
I1346
Y1347
L1351
L1354
V1354
L1388
L1459
K1463
F1473
PRO
SER
SER
PRO
PRO
PRO
THR
THR
THR
THR
PRO
PRO
SER
SER
PRO
ALA
ALA
THR
THR
ASP
GLU
GLN
LYS
E1493
F1499
Y1507
V1511
L1554
F1555
LYS
ASN
PRO
TYR
ASP

PHE
GLU
ALA
ILE
LYS
LYS
LEU
ILE
ASN
ASN
ASP
ASP
THR
THR
LYS
LYS
ASP
MET
LEU
LEU
GLY
LYS
LEU
LEU
ASN
TYR
LYS
LEU
SER
GLN
THR
GLY
GLY
VAL
GLN
ASN
PHE
PHE
ASN
ASN
THR
THR
ILE
ILE
SER
SER
ASN
ASN
LEU
ILE
GLY
GLY
LYS
PHE
GLN
ASP
ALA
ASP
MET
ALA
LEU
ASN
THR
CYS
SER
THR
GLU
GLU
GLU
ASP
GLN
CYS
VAL
LYS
LYS
SER
SER
ARG
GLN
CYS
PRO
GLU
ILE

ASN
SER
GLY
CYS
PHE
ARG
HIS
LEU
ASP
ASP
GLU
ARG
GLU
GLU
GLY
CYS
LYS
CYS
LEU
LEU
ASN
TYR
LYS
GLN
GLU
THR
GLY
ASP
LYS
CYS
VAL
GLN
ASN
PHE
ASN
ASN
PRO
ASN
ASN
THR
THR
ILE
THR
CYS
ASN
ASN
GLU
ASN
ASN
GLY
GLY
CYS
ASP
ALA
ASP
ALA
THR
CYS
THR
GLU
GLU
GLU
ASP
GLN
CYS
VAL
LYS
SER
SER
ARG
LYS
LYS
PRO
ILE

THR
CYS
GLU
CYS
THR
THR
PRO
ASP
SER
TYR
PRO
LEU
PHE
PHE
ASP
GLY
ILE
PHE
CYS
SER
SER
SER
ASN

4 Experimental information

Property	Value	Source
EM reconstruction method	SINGLE PARTICLE	Depositor
Imposed symmetry	POINT, C1	Depositor
Number of particles used	116037	Depositor
Resolution determination method	FSC 0.143 CUT-OFF	Depositor
CTF correction method	PHASE FLIPPING AND AMPLITUDE CORRECTION	Depositor
Microscope	FEI TITAN KRIOS	Depositor
Voltage (kV)	300	Depositor
Electron dose ($e^-/\text{\AA}^2$)	64	Depositor
Minimum defocus (nm)	500	Depositor
Maximum defocus (nm)	3000	Depositor
Magnification	130000	Depositor
Image detector	GATAN K2 SUMMIT (4k x 4k)	Depositor
Maximum map value	1.899	Depositor
Minimum map value	-0.711	Depositor
Average map value	-0.002	Depositor
Map value standard deviation	0.042	Depositor
Recommended contour level	0.3	Depositor
Map size (Å)	309.024, 309.024, 309.024	wwPDB
Map dimensions	288, 288, 288	wwPDB
Map angles (°)	90.0, 90.0, 90.0	wwPDB
Pixel spacing (Å)	1.073, 1.073, 1.073	Depositor

5 Model quality [i](#)

5.1 Standard geometry [i](#)

The Z score for a bond length (or angle) is the number of standard deviations the observed value is removed from the expected value. A bond length (or angle) with $|Z| > 5$ is considered an outlier worth inspection. RMSZ is the root-mean-square of all Z scores of the bond lengths (or angles).

Mol	Chain	Bond lengths		Bond angles	
		RMSZ	# Z >5	RMSZ	# Z >5
1	A	0.51	0/4777	0.54	0/6402
2	B	0.56	0/970	0.60	0/1306
3	C	0.52	0/2328	0.56	0/3126
4	D	0.53	0/1705	0.55	0/2284
All	All	0.52	0/9780	0.55	0/13118

There are no bond length outliers.

There are no bond angle outliers.

There are no chirality outliers.

There are no planarity outliers.

5.2 Too-close contacts [i](#)

In the following table, the Non-H and H(model) columns list the number of non-hydrogen atoms and hydrogen atoms in the chain respectively. The H(added) column lists the number of hydrogen atoms added and optimized by MolProbity. The Clashes column lists the number of clashes within the asymmetric unit, whereas Symm-Clashes lists symmetry-related clashes.

Mol	Chain	Non-H	H(model)	H(added)	Clashes	Symm-Clashes
1	A	4704	4849	4849	8	0
2	B	951	950	949	4	0
3	C	2297	2382	2382	5	0
4	D	1680	1721	1721	7	0
All	All	9632	9902	9901	22	0

The all-atom clashscore is defined as the number of clashes found per 1000 atoms (including hydrogen atoms). The all-atom clashscore for this structure is 1.

All (22) close contacts within the same asymmetric unit are listed below, sorted by their clash magnitude.

Atom-1	Atom-2	Interatomic distance (Å)	Clash overlap (Å)
2:B:845:CYS:SG	2:B:846:ASP:N	2.73	0.61
4:D:1554:LEU:O	4:D:1555:PHE:C	2.49	0.50
4:D:1507:TYR:O	4:D:1511:VAL:HG23	2.13	0.49
1:A:40:LEU:HD21	1:A:534:PHE:CE1	2.48	0.49
2:B:829:LEU:O	2:B:829:LEU:HD23	2.15	0.47
4:D:1347:TYR:O	4:D:1351:LEU:HD13	2.16	0.46
4:D:1459:LEU:HG	4:D:1463:LYS:HE3	1.96	0.46
1:A:337:ILE:O	1:A:338:ASN:C	2.54	0.46
3:C:1014:PHE:O	3:C:1015:ASN:C	2.55	0.45
1:A:323:THR:HG23	1:A:323:THR:O	2.17	0.45
4:D:1354:VAL:O	4:D:1358:LEU:HD23	2.16	0.45
3:C:1105:VAL:HG11	3:C:1113:PHE:CD1	2.51	0.45
1:A:421:TYR:CE1	1:A:680:GLU:HG2	2.52	0.44
1:A:584:ASP:OD1	1:A:585:PHE:N	2.52	0.43
1:A:526:ASP:O	1:A:530:VAL:HG23	2.18	0.43
4:D:1345:VAL:HG22	4:D:1345:VAL:O	2.19	0.43
2:B:810:SER:O	2:B:814:HIS:ND1	2.52	0.42
1:A:425:ILE:O	3:C:950:VAL:HA	2.20	0.42
3:C:982:LEU:O	3:C:982:LEU:HD23	2.19	0.41
1:A:35:LEU:O	1:A:39:VAL:HG23	2.20	0.41
4:D:1336:LEU:HD22	4:D:1499:PHE:HD1	1.86	0.41
2:B:885:ILE:CD1	3:C:966:VAL:HG11	2.51	0.40

There are no symmetry-related clashes.

5.3 Torsion angles [i](#)

5.3.1 Protein backbone [i](#)

In the following table, the Percentiles column shows the percent Ramachandran outliers of the chain as a percentile score with respect to all PDB entries followed by that with respect to all EM entries.

The Analysed column shows the number of residues for which the backbone conformation was analysed, and the total number of residues.

Mol	Chain	Analysed	Favoured	Allowed	Outliers	Percentiles	
1	A	552/717 (77%)	547 (99%)	5 (1%)	0	100	100
2	B	110/174 (63%)	109 (99%)	1 (1%)	0	100	100
3	C	281/416 (68%)	276 (98%)	5 (2%)	0	100	100
4	D	197/376 (52%)	196 (100%)	1 (0%)	0	100	100

Continued on next page...

Continued from previous page...

Mol	Chain	Analysed	Favoured	Allowed	Outliers	Percentiles	
All	All	1140/1683 (68%)	1128 (99%)	12 (1%)	0	100	100

There are no Ramachandran outliers to report.

5.3.2 Protein sidechains [i](#)

In the following table, the Percentiles column shows the percent sidechain outliers of the chain as a percentile score with respect to all PDB entries followed by that with respect to all EM entries.

The Analysed column shows the number of residues for which the sidechain conformation was analysed, and the total number of residues.

Mol	Chain	Analysed	Rotameric	Outliers	Percentiles	
1	A	533/652 (82%)	533 (100%)	0	100	100
2	B	111/169 (66%)	111 (100%)	0	100	100
3	C	268/387 (69%)	268 (100%)	0	100	100
4	D	192/353 (54%)	192 (100%)	0	100	100
All	All	1104/1561 (71%)	1104 (100%)	0	100	100

There are no protein residues with a non-rotameric sidechain to report.

Sometimes sidechains can be flipped to improve hydrogen bonding and reduce clashes. There are no such sidechains identified.

5.3.3 RNA [i](#)

There are no RNA molecules in this entry.

5.4 Non-standard residues in protein, DNA, RNA chains [i](#)

There are no non-standard protein/DNA/RNA residues in this entry.

5.5 Carbohydrates [i](#)

There are no monosaccharides in this entry.

5.6 Ligand geometry [i](#)

There are no ligands in this entry.

5.7 Other polymers [i](#)

There are no such residues in this entry.

5.8 Polymer linkage issues [i](#)

There are no chain breaks in this entry.

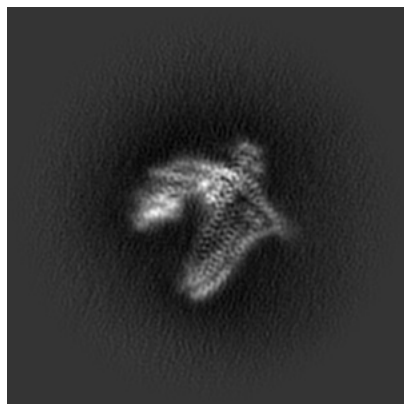
6 Map visualisation [i](#)

This section contains visualisations of the EMDB entry EMD-11154. These allow visual inspection of the internal detail of the map and identification of artifacts.

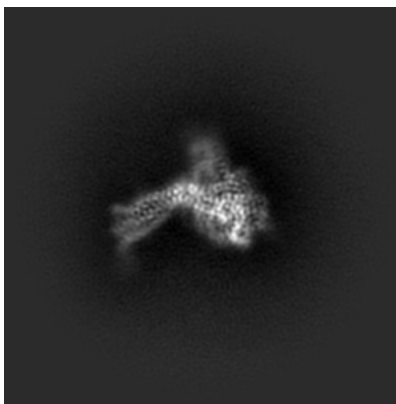
Images derived from a raw map, generated by summing the deposited half-maps, are presented below the corresponding image components of the primary map to allow further visual inspection and comparison with those of the primary map.

6.1 Orthogonal projections [i](#)

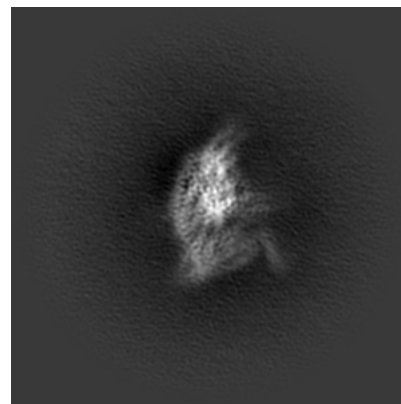
6.1.1 Primary map



X

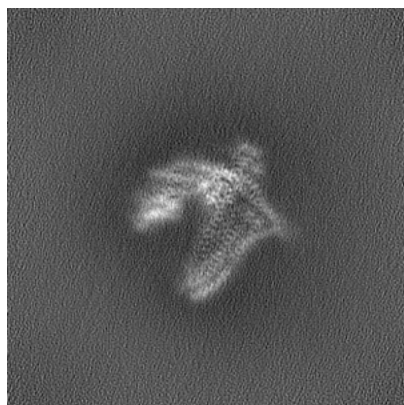


Y

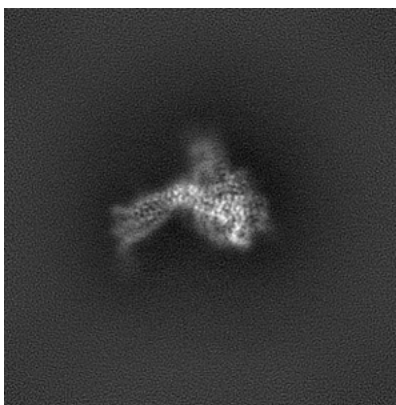


Z

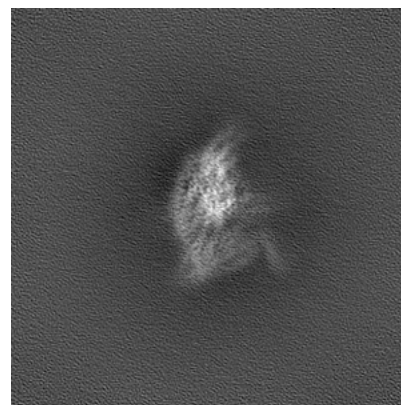
6.1.2 Raw map



X



Y

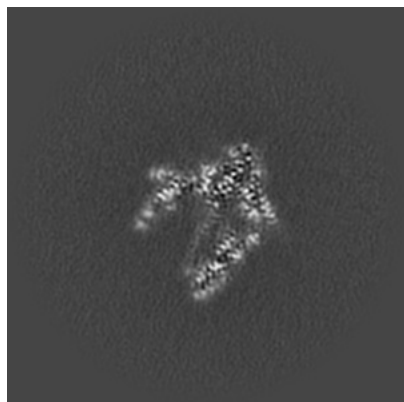


Z

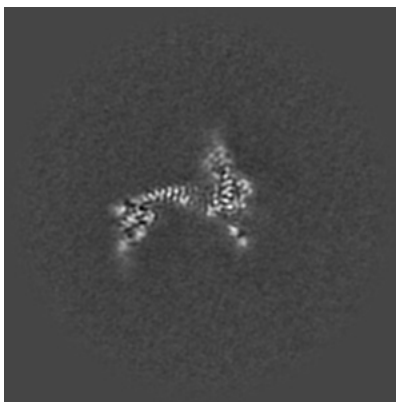
The images above show the map projected in three orthogonal directions.

6.2 Central slices [i](#)

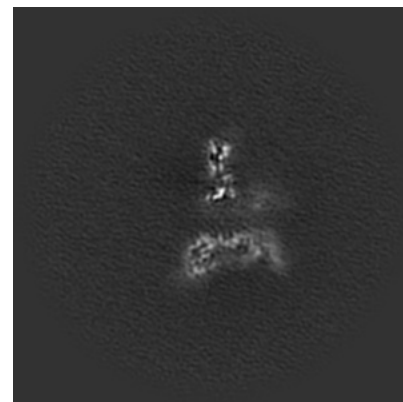
6.2.1 Primary map



X Index: 144

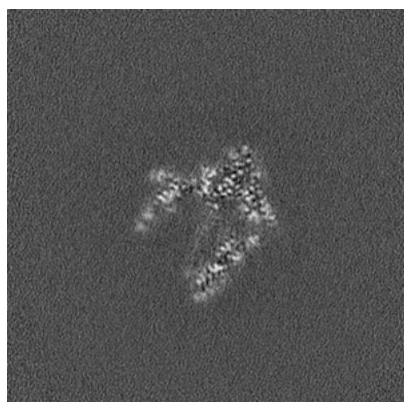


Y Index: 144

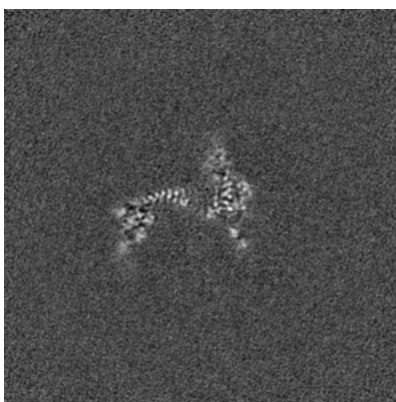


Z Index: 144

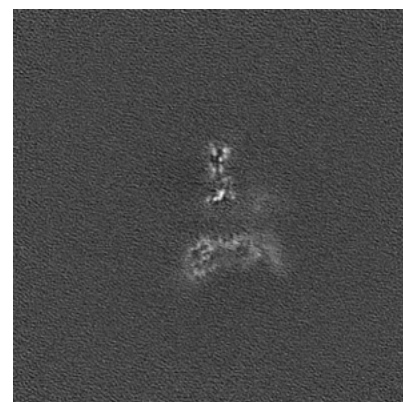
6.2.2 Raw map



X Index: 144



Y Index: 144

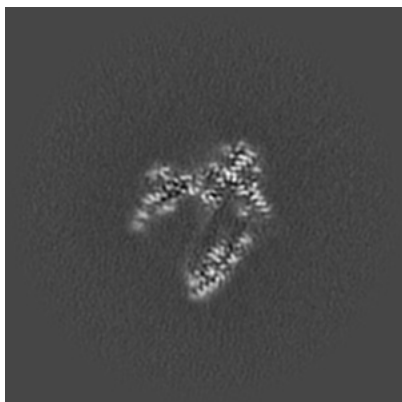


Z Index: 144

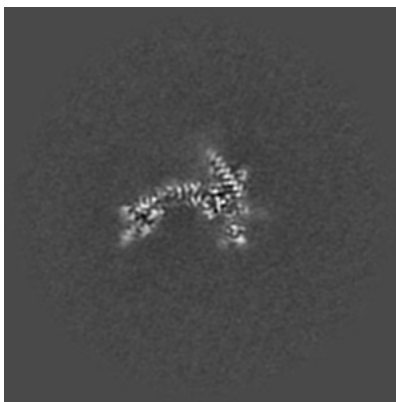
The images above show central slices of the map in three orthogonal directions.

6.3 Largest variance slices [i](#)

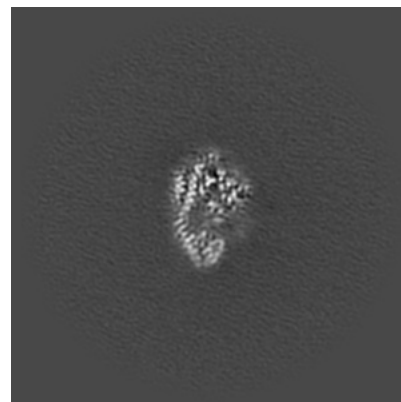
6.3.1 Primary map



X Index: 141

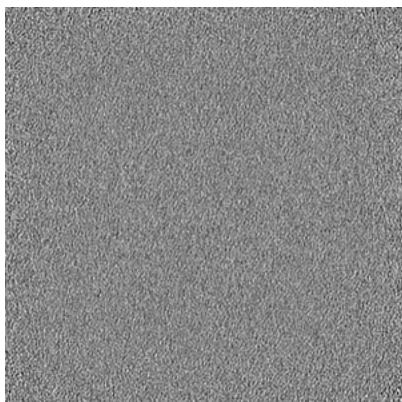


Y Index: 150

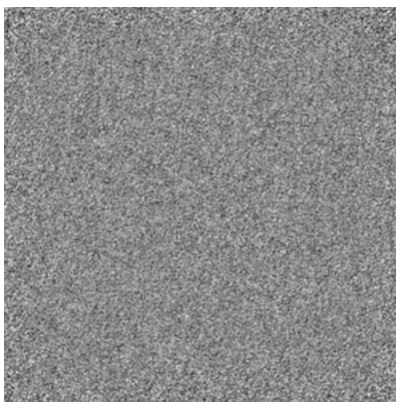


Z Index: 167

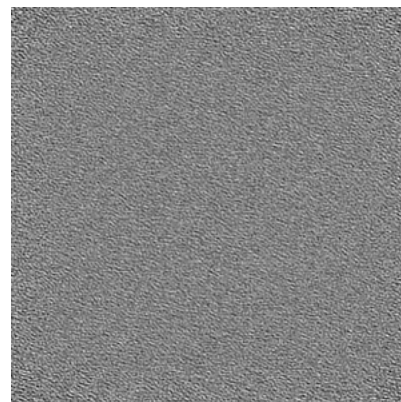
6.3.2 Raw map



X Index: 0



Y Index: 0

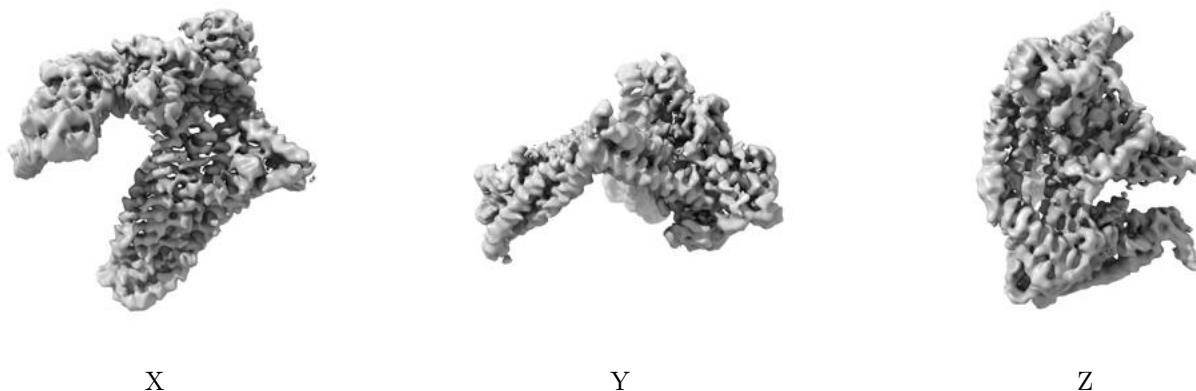


Z Index: 287

The images above show the largest variance slices of the map in three orthogonal directions.

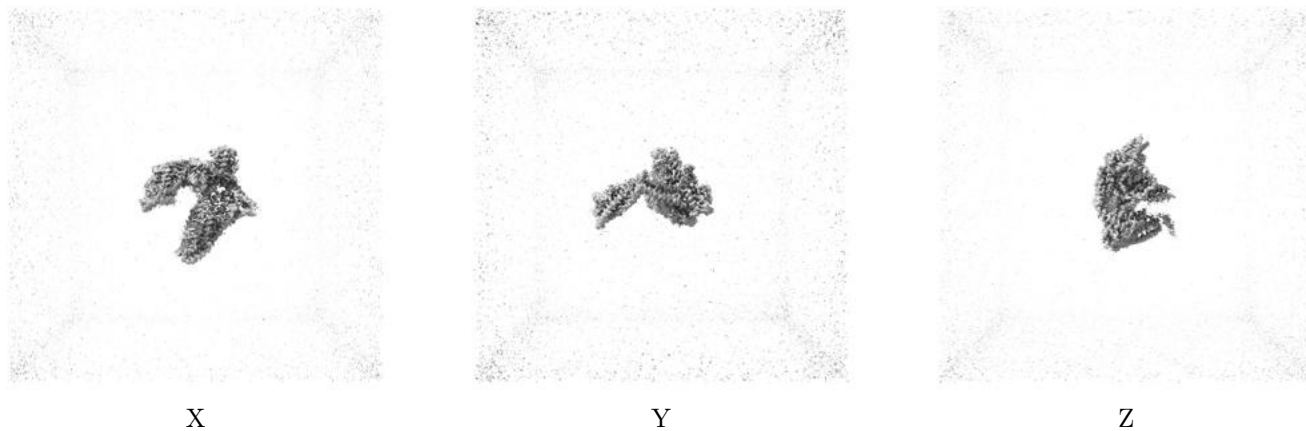
6.4 Orthogonal surface views [i](#)

6.4.1 Primary map



The images above show the 3D surface view of the map at the recommended contour level 0.3. These images, in conjunction with the slice images, may facilitate assessment of whether an appropriate contour level has been provided.

6.4.2 Raw map



These images show the 3D surface of the raw map. The raw map's contour level was selected so that its surface encloses the same volume as the primary map does at its recommended contour level.

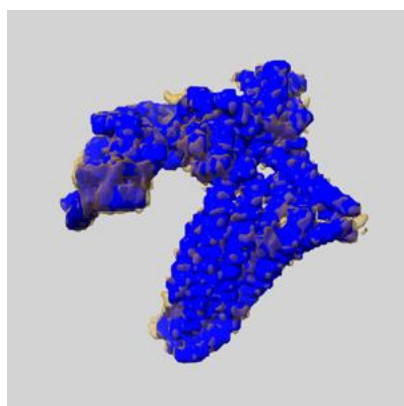
6.5 Mask visualisation [i](#)

This section shows the 3D surface view of the primary map at 50% transparency overlaid with the specified mask at 0% transparency

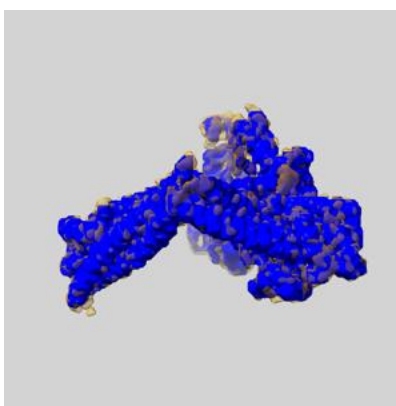
A mask typically either:

- Encompasses the whole structure
- Separates out a domain, a functional unit, a monomer or an area of interest from a larger structure

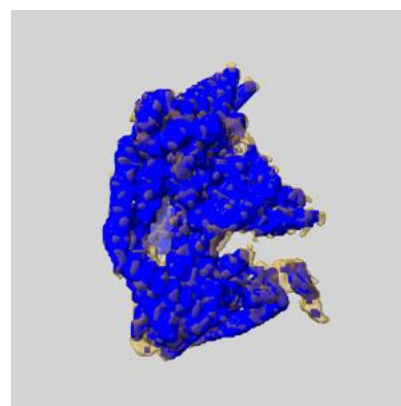
6.5.1 emd_11154_msk_1.map [i](#)



X



Y

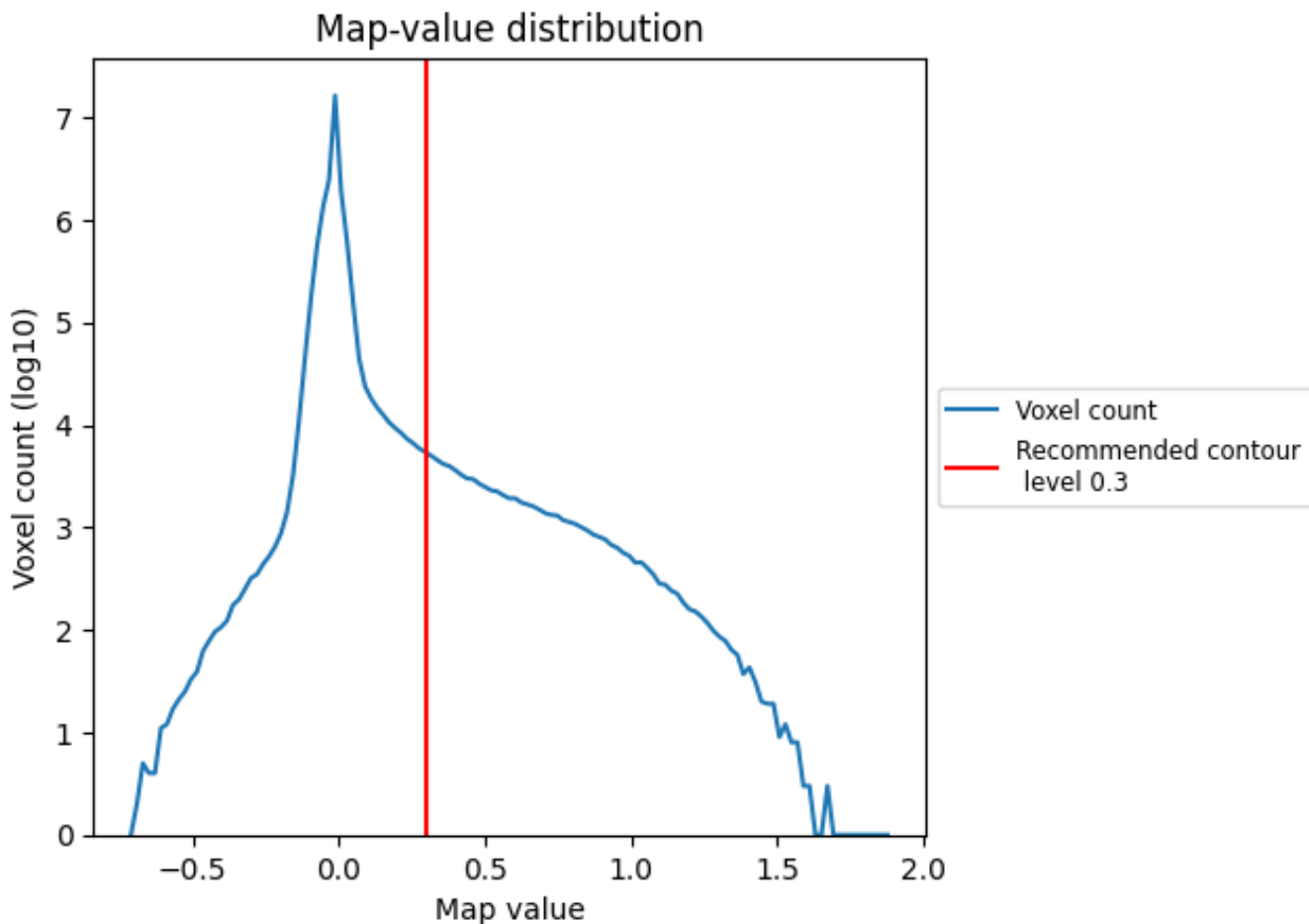


Z

7 Map analysis [i](#)

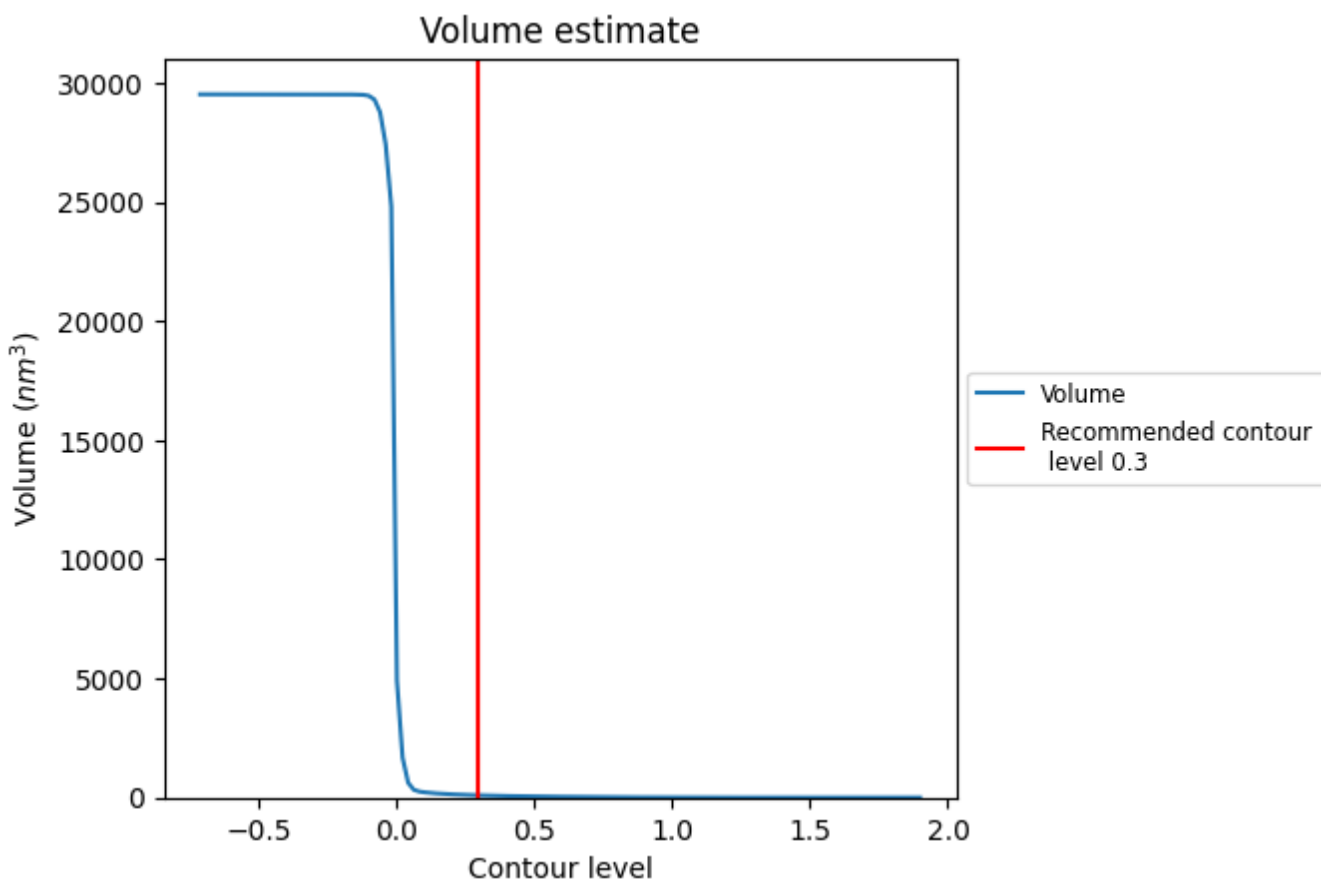
This section contains the results of statistical analysis of the map.

7.1 Map-value distribution [i](#)



The map-value distribution is plotted in 128 intervals along the x-axis. The y-axis is logarithmic. A spike in this graph at zero usually indicates that the volume has been masked.

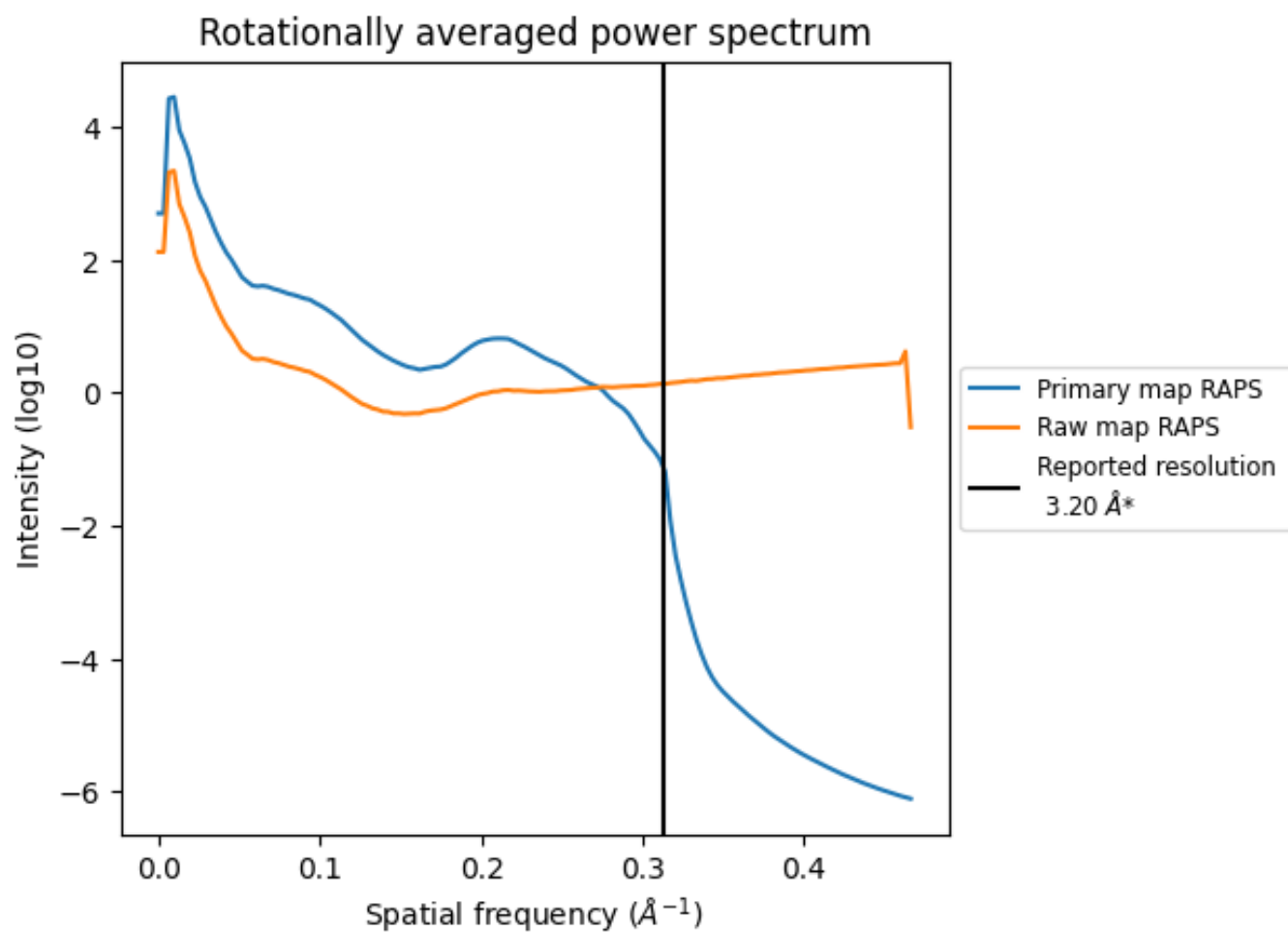
7.2 Volume estimate [i](#)



The volume at the recommended contour level is 93 nm³; this corresponds to an approximate mass of 84 kDa.

The volume estimate graph shows how the enclosed volume varies with the contour level. The recommended contour level is shown as a vertical line and the intersection between the line and the curve gives the volume of the enclosed surface at the given level.

7.3 Rotationally averaged power spectrum i

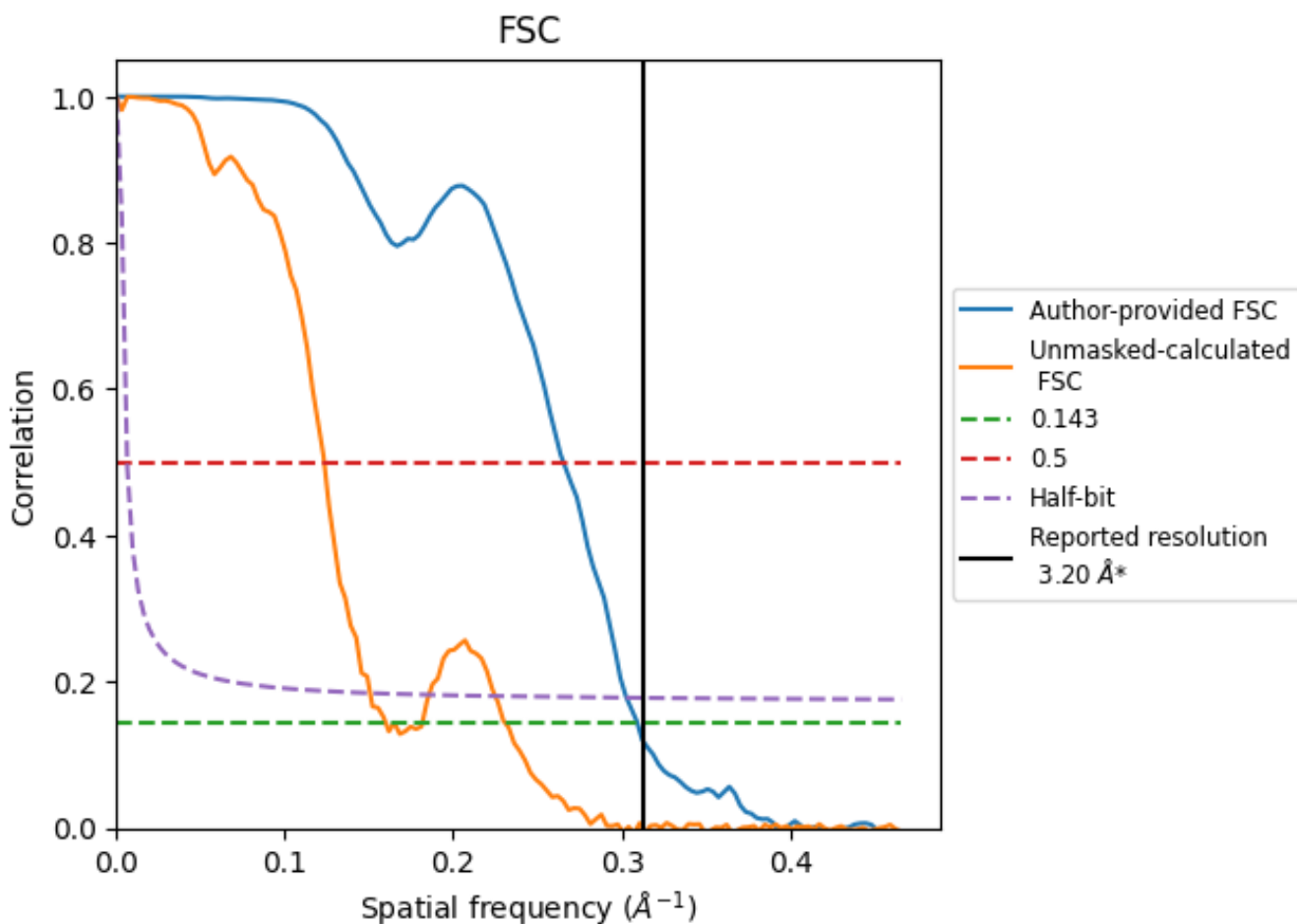


*Reported resolution corresponds to spatial frequency of 0.312 Å⁻¹

8 Fourier-Shell correlation [i](#)

Fourier-Shell Correlation (FSC) is the most commonly used method to estimate the resolution of single-particle and subtomogram-averaged maps. The shape of the curve depends on the imposed symmetry, mask and whether or not the two 3D reconstructions used were processed from a common reference. The reported resolution is shown as a black line. A curve is displayed for the half-bit criterion in addition to lines showing the 0.143 gold standard cut-off and 0.5 cut-off.

8.1 FSC [i](#)



*Reported resolution corresponds to spatial frequency of 0.312 Å⁻¹

8.2 Resolution estimates [i](#)

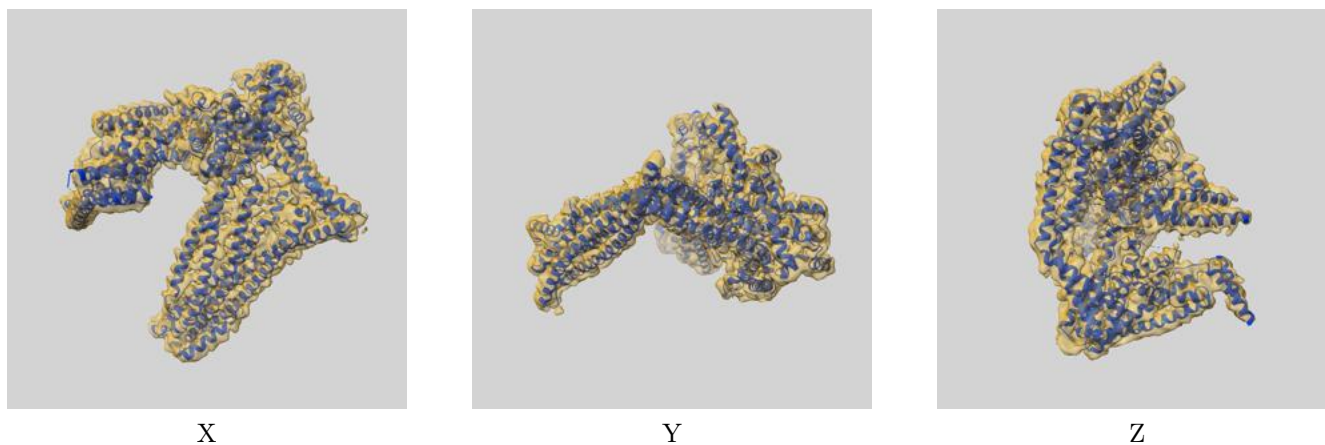
Resolution estimate (Å)	Estimation criterion (FSC cut-off)		
	0.143	0.5	Half-bit
Reported by author	3.20	-	-
Author-provided FSC curve	3.23	3.77	3.30
Unmasked-calculated*	6.25	8.10	6.64

*Resolution estimate based on FSC curve calculated by comparison of deposited half-maps. The value from deposited half-maps intersecting FSC 0.143 CUT-OFF 6.25 differs from the reported value 3.2 by more than 10 %

9 Map-model fit [i](#)

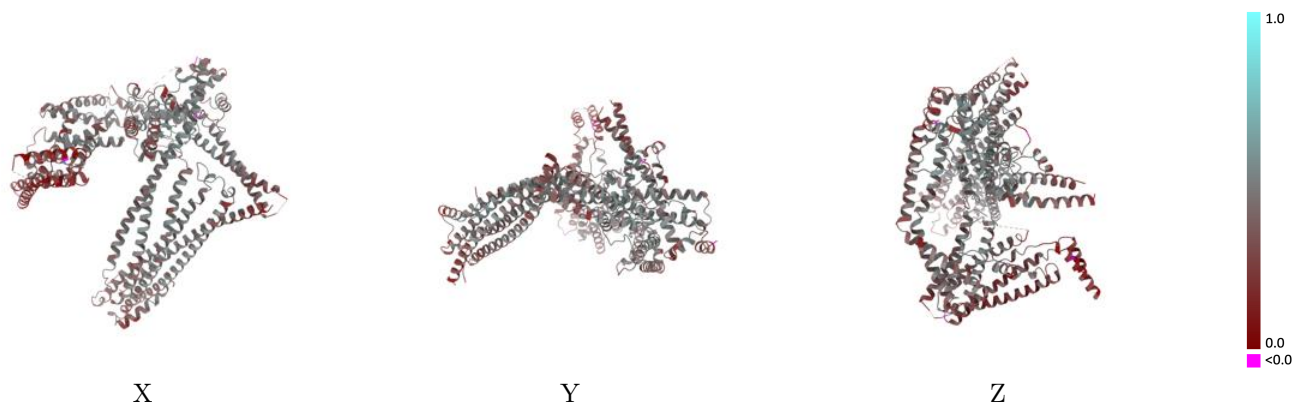
This section contains information regarding the fit between EMDB map EMD-11154 and PDB model 6ZBG. Per-residue inclusion information can be found in section 3 on page 4.

9.1 Map-model overlay [i](#)



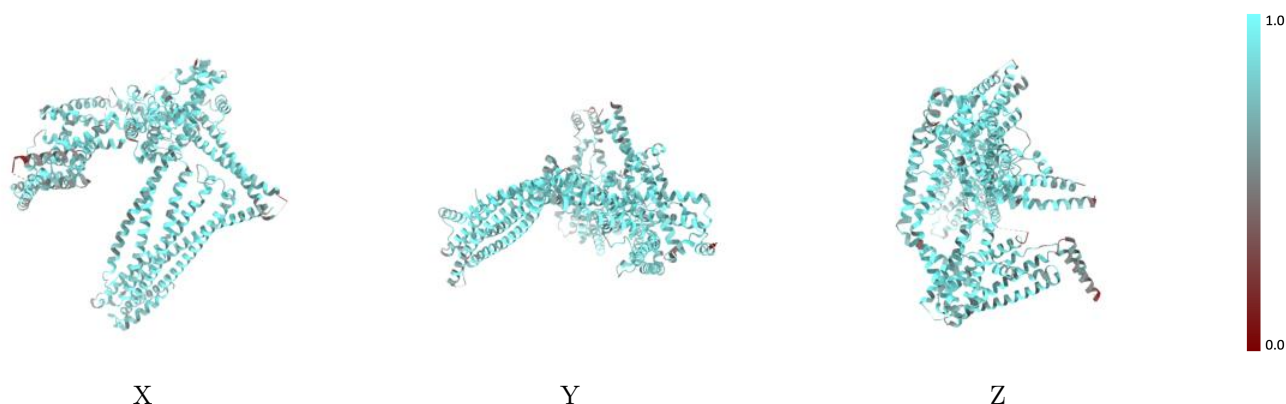
The images above show the 3D surface view of the map at the recommended contour level 0.3 at 50% transparency in yellow overlaid with a ribbon representation of the model coloured in blue. These images allow for the visual assessment of the quality of fit between the atomic model and the map.

9.2 Q-score mapped to coordinate model [\(i\)](#)



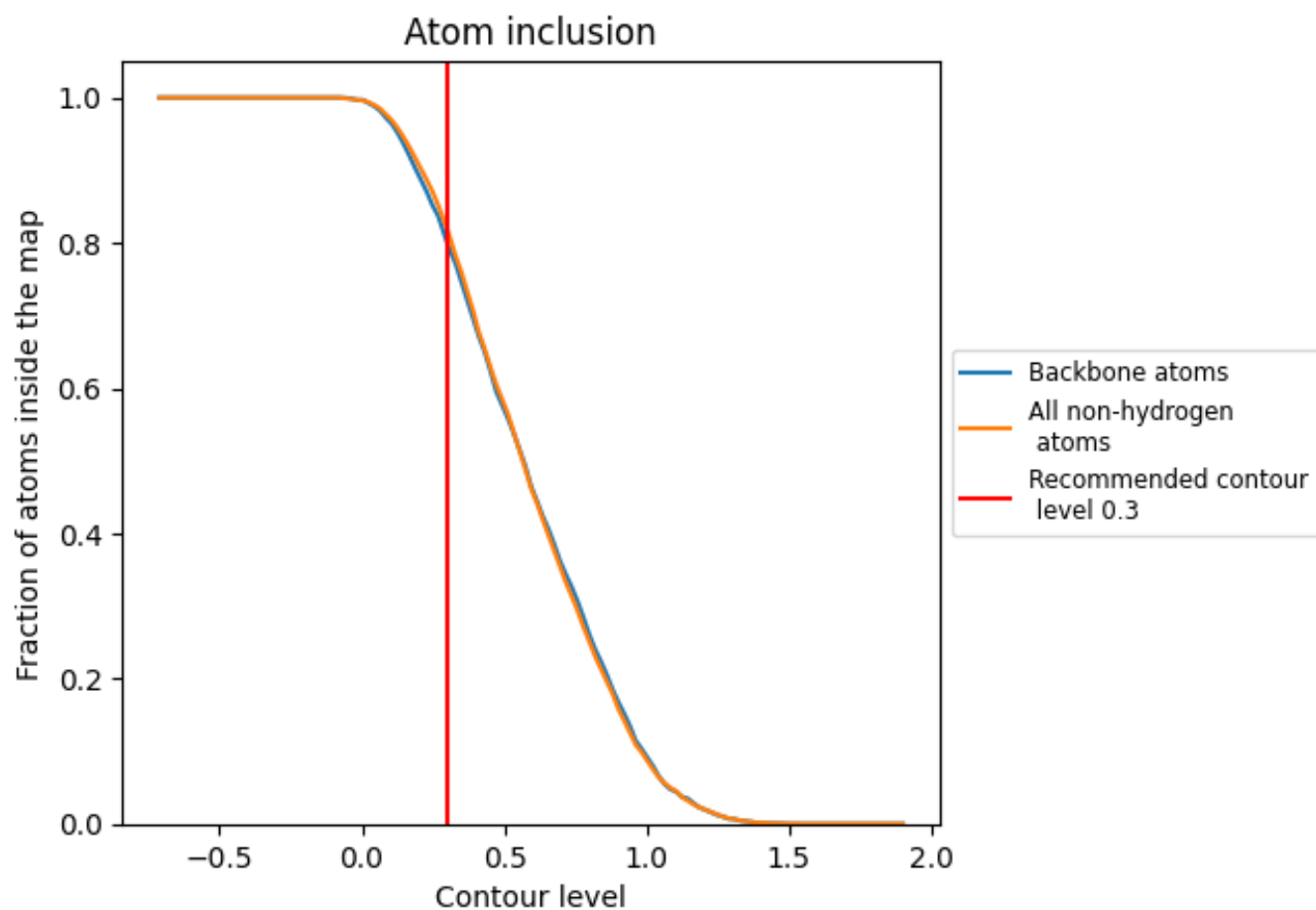
The images above show the model with each residue coloured according to its Q-score. This shows their resolvability in the map with higher Q-score values reflecting better resolvability. Please note: Q-score is calculating the resolvability of atoms, and thus high values are only expected at resolutions at which atoms can be resolved. Low Q-score values may therefore be expected for many entries.

9.3 Atom inclusion mapped to coordinate model [\(i\)](#)



The images above show the model with each residue coloured according to its atom inclusion. This shows to what extent they are inside the map at the recommended contour level (0.3).











9.4 Atom inclusion [i](#)



At the recommended contour level, 80% of all backbone atoms, 82% of all non-hydrogen atoms, are inside the map.

9.5 Map-model fit summary [i](#)

The table lists the average atom inclusion at the recommended contour level (0.3) and Q-score for the entire model and for each chain.

Chain	Atom inclusion	Q-score
All	 0.8185	 0.3950
A	 0.8076	 0.3720
B	 0.8333	 0.4170
C	 0.8226	 0.4320
D	 0.8369	 0.3940

