



wwPDB X-ray Structure Validation Summary Report

Dec 13, 2023 – 05:44 am GMT

PDB ID : 3ZE0
Title : Integrin alphaIIB beta3 headpiece and RGD peptide complex
Authors : Zhu, J.H.; Zhu, J.Q.; Springer, T.A.
Deposited on : 2012-12-03
Resolution : 2.95 Å(reported)

This is a wwPDB X-ray Structure Validation Summary Report for a publicly released PDB entry.

We welcome your comments at validation@mail.wwpdb.org

A user guide is available at

<https://www.wwpdb.org/validation/2017/XrayValidationReportHelp>

with specific help available everywhere you see the  symbol.

The types of validation reports are described at

<http://www.wwpdb.org/validation/2017/FAQs#types>.

The following versions of software and data (see [references](#) ) were used in the production of this report:

MolProbity : 4.02b-467
Mogul : 1.8.4, CSD as541be (2020)
Xtriage (Phenix) : 1.13
EDS : 2.36
Percentile statistics : 20191225.v01 (using entries in the PDB archive December 25th 2019)
Refmac : 5.8.0158
CCP4 : 7.0.044 (Gargrove)
Ideal geometry (proteins) : Engh & Huber (2001)
Ideal geometry (DNA, RNA) : Parkinson et al. (1996)
Validation Pipeline (wwPDB-VP) : 2.36

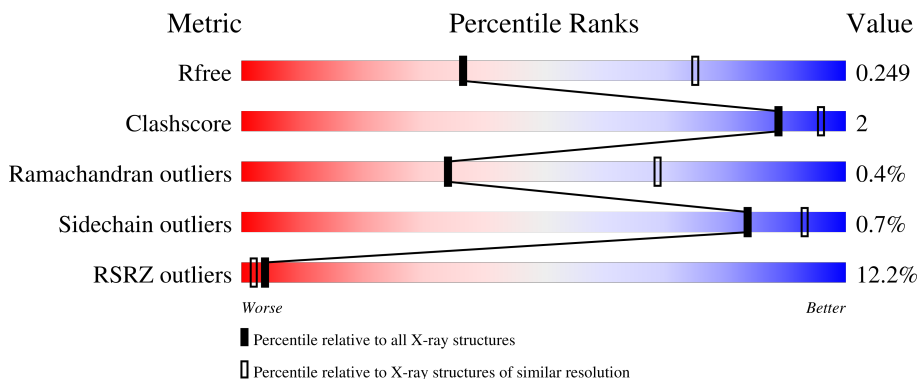
1 Overall quality at a glance

The following experimental techniques were used to determine the structure:

X-RAY DIFFRACTION

The reported resolution of this entry is 2.95 Å.

Percentile scores (ranging between 0-100) for global validation metrics of the entry are shown in the following graphic. The table shows the number of entries on which the scores are based.



Metric	Whole archive (#Entries)	Similar resolution (#Entries, resolution range(Å))
R_{free}	130704	3104 (3.00-2.92)
Clashscore	141614	3462 (3.00-2.92)
Ramachandran outliers	138981	3340 (3.00-2.92)
Sidechain outliers	138945	3343 (3.00-2.92)
RSRZ outliers	127900	2986 (3.00-2.92)

The table below summarises the geometric issues observed across the polymeric chains and their fit to the electron density. The red, orange, yellow and green segments of the lower bar indicate the fraction of residues that contain outliers for ≥ 3 , 2, 1 and 0 types of geometric quality criteria respectively. A grey segment represents the fraction of residues that are not modelled. The numeric value for each fraction is indicated below the corresponding segment, with a dot representing fractions $\leq 5\%$. The upper red bar (where present) indicates the fraction of residues that have poor fit to the electron density. The numeric value is given above the bar.

Mol	Chain	Length	Quality of chain
1	A	457	 95%
1	C	457	 96%
2	B	472	 92%
2	D	472	 92%
3	E	221	 91%

Continued on next page...

Continued from previous page...

Mol	Chain	Length	Quality of chain
3	H	221	
4	F	214	
4	L	214	
5	I	6	
5	J	6	
6	G	4	
6	M	4	
7	K	2	
7	N	2	

The following table lists non-polymeric compounds, carbohydrate monomers and non-standard residues in protein, DNA, RNA chains that are outliers for geometric or electron-density-fit criteria:

Mol	Type	Chain	Res	Chirality	Geometry	Clashes	Electron density
11	NAG	D	3099	-	-	-	X

2 Entry composition

There are 13 unique types of molecules in this entry. The entry contains 41622 atoms, of which 20222 are hydrogens and 0 are deuteriums.

In the tables below, the ZeroOcc column contains the number of atoms modelled with zero occupancy, the AltConf column contains the number of residues with at least one atom in alternate conformation and the Trace column contains the number of residues modelled with at most 2 atoms.

- Molecule 1 is a protein called INTEGRIN ALPHA-IIB.

Mol	Chain	Residues	Atoms						ZeroOcc	AltConf	Trace
			Total	C	H	N	O	S			
1	A	455	Total	C	H	N	O	S	0	5	0
			6868	2235	3355	604	666	8			
1	C	453	Total	C	H	N	O	S	0	2	0
			6795	2214	3311	600	662	8			

- Molecule 2 is a protein called INTEGRIN BETA-3.

Mol	Chain	Residues	Atoms						ZeroOcc	AltConf	Trace
			Total	C	H	N	O	S			
2	B	465	Total	C	H	N	O	S	6	1	0
			7098	2238	3506	613	708	33			
2	D	469	Total	C	H	N	O	S	14	1	0
			7146	2252	3526	619	715	34			

- Molecule 3 is a protein called 10E5 FAB HEAVY CHAIN.

Mol	Chain	Residues	Atoms						ZeroOcc	AltConf	Trace
			Total	C	H	N	O	S			
3	E	216	Total	C	H	N	O	S	0	0	0
			3239	1041	1597	266	329	6			
3	H	216	Total	C	H	N	O	S	0	0	0
			3239	1041	1597	266	329	6			

- Molecule 4 is a protein called 10E5 FAB LIGHT CHAIN.

Mol	Chain	Residues	Atoms						ZeroOcc	AltConf	Trace
			Total	C	H	N	O	S			
4	F	214	Total	C	H	N	O	S	0	0	0
			3187	1019	1550	268	341	9			
4	L	214	Total	C	H	N	O	S	0	0	0
			3187	1019	1550	268	341	9			

- Molecule 5 is a protein called RGD PEPTIDE.

Mol	Chain	Residues	Atoms					ZeroOcc	AltConf	Trace
5	I	6	Total	C	H	N	O	0	0	0
			75	22	34	9	10			
5	J	6	Total	C	H	N	O	2	0	0
			75	22	34	9	10			

- Molecule 6 is an oligosaccharide called alpha-D-mannopyranose-(1-3)-beta-D-mannopyranose-(1-4)-2-acetamido-2-deoxy-beta-D-glucopyranose-(1-4)-2-acetamido-2-deoxy-beta-D-glucopyranose.



Mol	Chain	Residues	Atoms					ZeroOcc	AltConf	Trace
6	G	4	Total	C	H	N	O	0	0	0
			93	28	43	2	20			
6	M	4	Total	C	H	N	O	0	0	0
			93	28	43	2	20			

- Molecule 7 is an oligosaccharide called 2-acetamido-2-deoxy-beta-D-glucopyranose-(1-4)-2-acetamido-2-deoxy-beta-D-glucopyranose.



Mol	Chain	Residues	Atoms					ZeroOcc	AltConf	Trace
7	K	2	Total	C	H	N	O	0	0	0
			53	16	25	2	10			
7	N	2	Total	C	H	N	O	0	0	0
			53	16	25	2	10			

- Molecule 8 is SULFATE ION (three-letter code: SO4) (formula: O₄S).



Mol	Chain	Residues	Atoms	ZeroOcc	AltConf
8	A	1	Total O S 5 4 1	0	0
8	A	1	Total O S 5 4 1	0	0
8	A	1	Total O S 5 4 1	0	0
8	C	1	Total O S 5 4 1	0	0
8	L	1	Total O S 5 4 1	0	0

- Molecule 9 is CALCIUM ION (three-letter code: CA) (formula: Ca).

Mol	Chain	Residues	Atoms	ZeroOcc	AltConf
9	A	4	Total Ca 4 4	0	0
9	C	4	Total Ca 4 4	0	0

- Molecule 10 is MANGANESE (II) ION (three-letter code: MN) (formula: Mn).

Mol	Chain	Residues	Atoms	ZeroOcc	AltConf
10	B	3	Total Mn 3 3	0	0
10	D	3	Total Mn 3 3	0	0

- Molecule 11 is 2-acetamido-2-deoxy-beta-D-glucopyranose (three-letter code: NAG) (formula: C₈H₁₅NO₆).



Mol	Chain	Residues	Atoms					ZeroOcc	AltConf
			Total	C	H	N	O		
11	B	1	27	8	13	1	5	0	0
11	D	1	27	8	13	1	5	0	0

- Molecule 12 is CHLORIDE ION (three-letter code: CL) (formula: Cl).

Mol	Chain	Residues	Atoms		ZeroOcc	AltConf
			Total	Cl		
12	C	1	1	1	0	0

- Molecule 13 is water.

Mol	Chain	Residues	Atoms		ZeroOcc	AltConf
			Total	O		
13	A	160	160	160	0	0
13	B	71	71	71	0	0
13	C	51	51	51	0	0
13	D	26	26	26	0	0
13	E	1	1	1	0	0

Continued on next page...

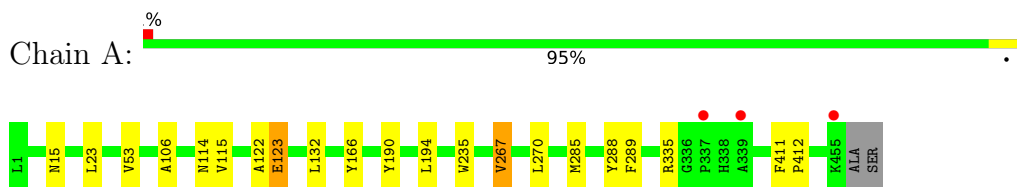
Continued from previous page...

Mol	Chain	Residues	Atoms	ZeroOcc	AltConf
13	F	1	Total O 1 1	0	0
13	H	8	Total O 8 8	0	0
13	I	2	Total O 2 2	0	0
13	J	1	Total O 1 1	0	0
13	L	6	Total O 6 6	0	0

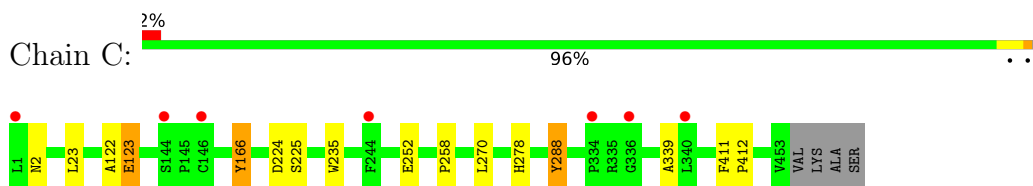
3 Residue-property plots [i](#)

These plots are drawn for all protein, RNA, DNA and oligosaccharide chains in the entry. The first graphic for a chain summarises the proportions of the various outlier classes displayed in the second graphic. The second graphic shows the sequence view annotated by issues in geometry and electron density. Residues are color-coded according to the number of geometric quality criteria for which they contain at least one outlier: green = 0, yellow = 1, orange = 2 and red = 3 or more. A red dot above a residue indicates a poor fit to the electron density ($RSRZ > 2$). Stretches of 2 or more consecutive residues without any outlier are shown as a green connector. Residues present in the sample, but not in the model, are shown in grey.

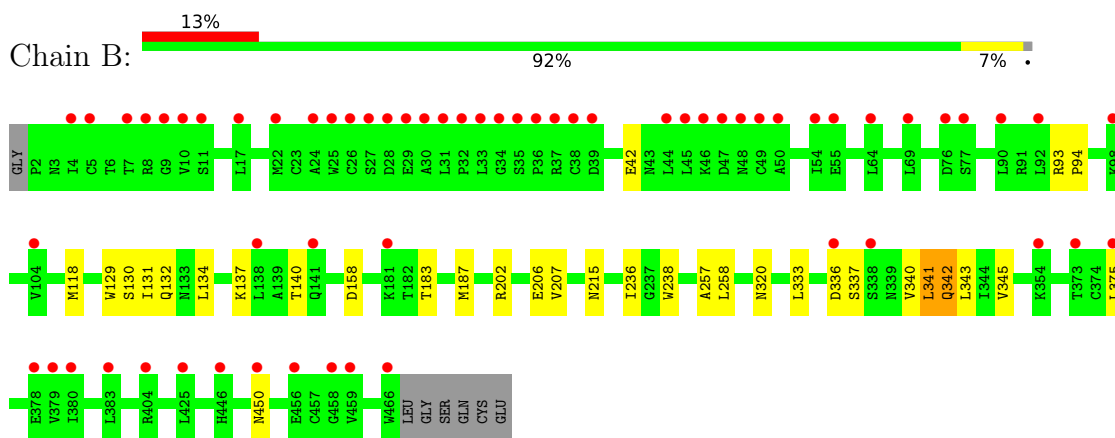
- Molecule 1: INTEGRIN ALPHA-IIB



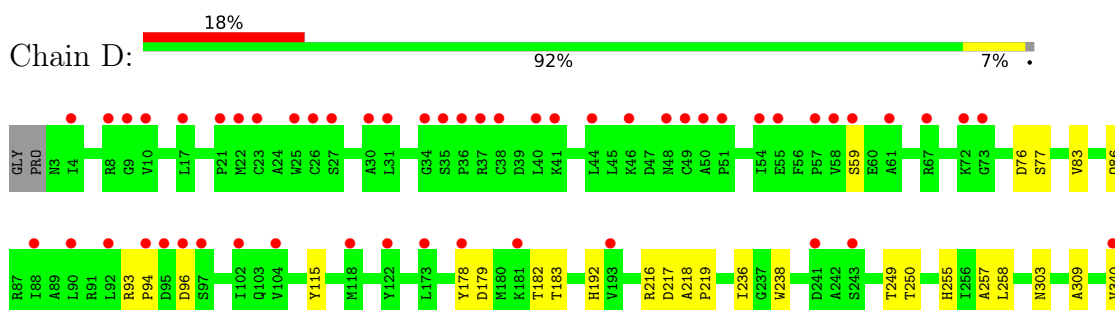
- Molecule 1: INTEGRIN ALPHA-IIB

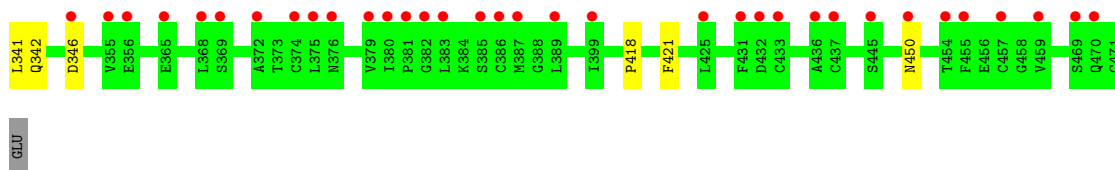


- Molecule 2: INTEGRIN BETA-3



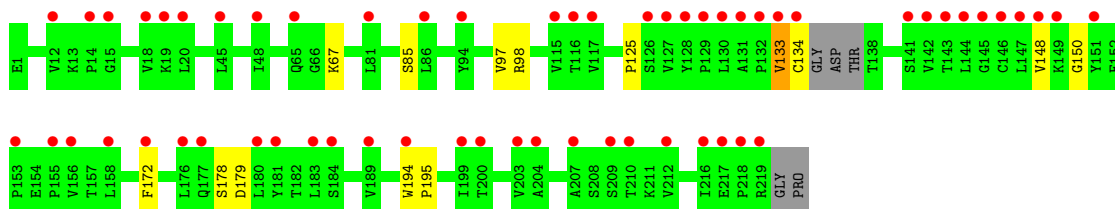
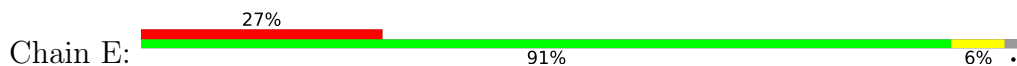
- Molecule 2: INTEGRIN BETA-3



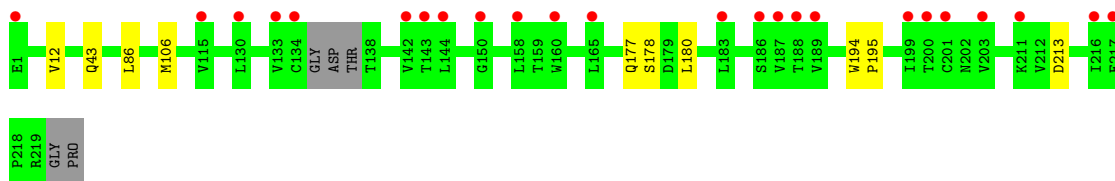


GLU

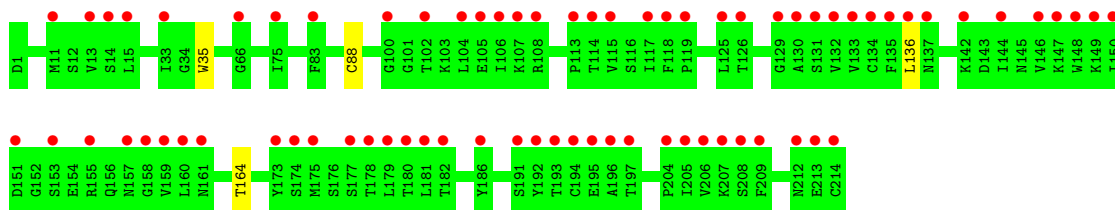
- Molecule 3: 10E5 FAB HEAVY CHAIN



- Molecule 3: 10E5 FAB HEAVY CHAIN



- Molecule 4: 10E5 FAB LIGHT CHAIN



- Molecule 4: 10E5 FAB LIGHT CHAIN

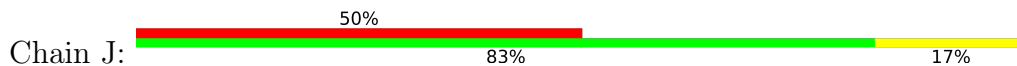


- Molecule 5: RGD PEPTIDE



There are no outlier residues recorded for this chain.

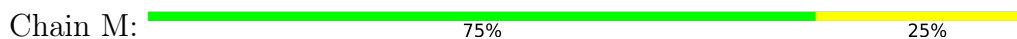
● Molecule 5: RGD PEPTIDE



● Molecule 6: alpha-D-mannopyranose-(1-3)-beta-D-mannopyranose-(1-4)-2-acetamido-2-deoxy-beta-D-glucopyranose-(1-4)-2-acetamido-2-deoxy-beta-D-glucopyranose



● Molecule 6: alpha-D-mannopyranose-(1-3)-beta-D-mannopyranose-(1-4)-2-acetamido-2-deoxy-beta-D-glucopyranose-(1-4)-2-acetamido-2-deoxy-beta-D-glucopyranose



● Molecule 7: 2-acetamido-2-deoxy-beta-D-glucopyranose-(1-4)-2-acetamido-2-deoxy-beta-D-glucopyranose



● Molecule 7: 2-acetamido-2-deoxy-beta-D-glucopyranose-(1-4)-2-acetamido-2-deoxy-beta-D-glucopyranose



4 Data and refinement statistics

Property	Value	Source
Space group	P 21 21 2	Depositor
Cell constants a, b, c, α , β , γ	259.64Å 144.68Å 104.59Å 90.00° 90.00° 90.00°	Depositor
Resolution (Å)	48.31 – 2.95 49.03 – 2.95	Depositor EDS
% Data completeness (in resolution range)	99.6 (48.31-2.95) 99.6 (49.03-2.95)	Depositor EDS
R_{merge}	0.11	Depositor
R_{sym}	(Not available)	Depositor
$\langle I/\sigma(I) \rangle$ ¹	2.23 (at 2.96Å)	Xtrriage
Refinement program	PHENIX (PHENIX.REFINE)	Depositor
R, R_{free}	0.185 , 0.243 0.193 , 0.249	Depositor DCC
R_{free} test set	1071 reflections (1.29%)	wwPDB-VP
Wilson B-factor (Å ²)	57.8	Xtrriage
Anisotropy	0.000	Xtrriage
Bulk solvent k_{sol} (e/Å ³), B_{sol} (Å ²)	0.34 , 83.8	EDS
L-test for twinning ²	$\langle L \rangle = 0.48$, $\langle L^2 \rangle = 0.31$	Xtrriage
Estimated twinning fraction	No twinning to report.	Xtrriage
F_o, F_c correlation	0.94	EDS
Total number of atoms	41622	wwPDB-VP
Average B, all atoms (Å ²)	103.0	wwPDB-VP

Xtrriage's analysis on translational NCS is as follows: *The largest off-origin peak in the Patterson function is 2.29% of the height of the origin peak. No significant pseudotranslation is detected.*

¹Intensities estimated from amplitudes.

²Theoretical values of $\langle |L| \rangle$, $\langle L^2 \rangle$ for acentric reflections are 0.5, 0.333 respectively for untwinned datasets, and 0.375, 0.2 for perfectly twinned datasets.

5 Model quality

5.1 Standard geometry

Bond lengths and bond angles in the following residue types are not validated in this section: BMA, SO4, MN, CL, CA, MAN, NAG

The Z score for a bond length (or angle) is the number of standard deviations the observed value is removed from the expected value. A bond length (or angle) with $|Z| > 5$ is considered an outlier worth inspection. RMSZ is the root-mean-square of all Z scores of the bond lengths (or angles).

Mol	Chain	Bond lengths		Bond angles	
		RMSZ	# Z >5	RMSZ	# Z >5
1	A	0.23	0/3625	0.40	0/4940
1	C	0.22	0/3587	0.38	0/4888
2	B	0.21	0/3662	0.39	0/4965
2	D	0.20	0/3686	0.36	0/4997
3	E	0.21	0/1684	0.38	0/2305
3	H	0.21	0/1684	0.39	0/2305
4	F	0.21	0/1673	0.37	0/2269
4	L	0.22	0/1673	0.37	0/2269
5	I	0.19	0/41	0.43	0/52
5	J	0.20	0/41	0.50	0/52
All	All	0.21	0/21356	0.38	0/29042

There are no bond length outliers.

There are no bond angle outliers.

There are no chirality outliers.

There are no planarity outliers.

5.2 Too-close contacts

In the following table, the Non-H and H(model) columns list the number of non-hydrogen atoms and hydrogen atoms in the chain respectively. The H(added) column lists the number of hydrogen atoms added and optimized by MolProbity. The Clashes column lists the number of clashes within the asymmetric unit, whereas Symm-Clashes lists symmetry-related clashes.

Mol	Chain	Non-H	H(model)	H(added)	Clashes	Symm-Clashes
1	A	3513	3355	3364	12	0
1	C	3484	3311	3320	9	0
2	B	3592	3506	3512	20	0

Continued on next page...

Continued from previous page...

Mol	Chain	Non-H	H(model)	H(added)	Clashes	Symm-Clashes
2	D	3620	3526	3531	18	0
3	E	1642	1597	1600	7	0
3	H	1642	1597	1600	5	0
4	F	1637	1550	1553	3	0
4	L	1637	1550	1553	3	0
5	I	41	34	34	0	0
5	J	41	34	34	1	0
6	G	50	43	43	0	0
6	M	50	43	43	0	0
7	K	28	25	25	0	0
7	N	28	25	25	1	0
8	A	15	0	0	1	0
8	C	5	0	0	0	0
8	L	5	0	0	0	0
9	A	4	0	0	0	0
9	C	4	0	0	0	0
10	B	3	0	0	0	0
10	D	3	0	0	0	0
11	B	14	13	13	0	0
11	D	14	13	13	1	0
12	C	1	0	0	0	0
13	A	160	0	0	3	1
13	B	71	0	0	0	0
13	C	51	0	0	0	1
13	D	26	0	0	1	0
13	E	1	0	0	0	0
13	F	1	0	0	0	0
13	H	8	0	0	0	0
13	I	2	0	0	0	0
13	J	1	0	0	1	0
13	L	6	0	0	1	0
All	All	21400	20222	20263	77	1

The all-atom clashscore is defined as the number of clashes found per 1000 atoms (including hydrogen atoms). The all-atom clashscore for this structure is 2.

The worst 5 of 77 close contacts within the same asymmetric unit are listed below, sorted by their clash magnitude.

Atom-1	Atom-2	Interatomic distance (Å)	Clash overlap (Å)
2:D:115:TYR:HH	2:D:192:HIS:HD1	1.10	0.91
2:D:250:THR:OG1	13:D:4007:HOH:O	2.11	0.69

Continued on next page...

Continued from previous page...

Atom-1	Atom-2	Interatomic distance (Å)	Clash overlap (Å)
1:C:224:ASP:OD1	1:C:225:SER:N	2.30	0.64
2:B:118:MET:SD	2:B:131:ILE:HD13	2.40	0.61
1:A:122:ALA:O	1:A:123:GLU:HB2	2.05	0.56

All (1) symmetry-related close contacts are listed below. The label for Atom-2 includes the symmetry operator and encoded unit-cell translations to be applied.

Atom-1	Atom-2	Interatomic distance (Å)	Clash overlap (Å)
13:A:4052:HOH:O	13:C:4041:HOH:O[1_554]	2.12	0.08

5.3 Torsion angles [i](#)

5.3.1 Protein backbone [i](#)

In the following table, the Percentiles column shows the percent Ramachandran outliers of the chain as a percentile score with respect to all X-ray entries followed by that with respect to entries of similar resolution.

The Analysed column shows the number of residues for which the backbone conformation was analysed, and the total number of residues.

Mol	Chain	Analysed	Favoured	Allowed	Outliers	Percentiles
1	A	458/457 (100%)	440 (96%)	17 (4%)	1 (0%)	47 79
1	C	453/457 (99%)	428 (94%)	24 (5%)	1 (0%)	47 79
2	B	464/472 (98%)	435 (94%)	26 (6%)	3 (1%)	25 60
2	D	468/472 (99%)	436 (93%)	30 (6%)	2 (0%)	34 69
3	E	212/221 (96%)	197 (93%)	13 (6%)	2 (1%)	17 51
3	H	212/221 (96%)	196 (92%)	15 (7%)	1 (0%)	29 64
4	F	212/214 (99%)	197 (93%)	15 (7%)	0	100 100
4	L	212/214 (99%)	204 (96%)	7 (3%)	1 (0%)	29 64
5	I	4/6 (67%)	4 (100%)	0	0	100 100
5	J	4/6 (67%)	4 (100%)	0	0	100 100
All	All	2699/2740 (98%)	2541 (94%)	147 (5%)	11 (0%)	34 69

5 of 11 Ramachandran outliers are listed below:

Mol	Chain	Res	Type
2	B	341	LEU
1	A	123	GLU
2	B	343	LEU
2	B	375	LEU
1	C	123	GLU

5.3.2 Protein sidechains [i](#)

In the following table, the Percentiles column shows the percent sidechain outliers of the chain as a percentile score with respect to all X-ray entries followed by that with respect to entries of similar resolution.

The Analysed column shows the number of residues for which the sidechain conformation was analysed, and the total number of residues.

Mol	Chain	Analysed	Rotameric	Outliers	Percentiles	
1	A	368/364 (101%)	362 (98%)	6 (2%)	62	84
1	C	363/364 (100%)	359 (99%)	4 (1%)	73	89
2	B	413/417 (99%)	408 (99%)	5 (1%)	71	88
2	D	416/417 (100%)	416 (100%)	0	100	100
3	E	187/190 (98%)	187 (100%)	0	100	100
3	H	187/190 (98%)	186 (100%)	1 (0%)	88	95
4	F	188/188 (100%)	188 (100%)	0	100	100
4	L	188/188 (100%)	188 (100%)	0	100	100
5	I	4/4 (100%)	4 (100%)	0	100	100
5	J	4/4 (100%)	4 (100%)	0	100	100
All	All	2318/2326 (100%)	2302 (99%)	16 (1%)	84	93

5 of 16 residues with a non-rotameric sidechain are listed below:

Mol	Chain	Res	Type
1	C	288	TYR
1	C	252	GLU
2	B	183	THR
1	C	166	TYR
2	B	140	THR

Sometimes sidechains can be flipped to improve hydrogen bonding and reduce clashes. All (3) such sidechains are listed below:

Mol	Chain	Res	Type
1	A	338	HIS
2	B	450	ASN
1	C	197	GLN

5.3.3 RNA [i](#)

There are no RNA molecules in this entry.

5.4 Non-standard residues in protein, DNA, RNA chains [i](#)

There are no non-standard protein/DNA/RNA residues in this entry.

5.5 Carbohydrates [i](#)

12 monosaccharides are modelled in this entry.

In the following table, the Counts columns list the number of bonds (or angles) for which Mogul statistics could be retrieved, the number of bonds (or angles) that are observed in the model and the number of bonds (or angles) that are defined in the Chemical Component Dictionary. The Link column lists molecule types, if any, to which the group is linked. The Z score for a bond length (or angle) is the number of standard deviations the observed value is removed from the expected value. A bond length (or angle) with $|Z| > 2$ is considered an outlier worth inspection. RMSZ is the root-mean-square of all Z scores of the bond lengths (or angles).

Mol	Type	Chain	Res	Link	Bond lengths			Bond angles		
					Counts	RMSZ	$\# Z > 2$	Counts	RMSZ	$\# Z > 2$
6	NAG	G	1	2,6	14,14,15	0.54	0	17,19,21	0.78	0
6	NAG	G	2	6	14,14,15	0.59	0	17,19,21	0.76	0
6	BMA	G	3	6	11,11,12	0.63	0	15,15,17	0.88	0
6	MAN	G	4	6	11,11,12	0.62	0	15,15,17	0.71	0
7	NAG	K	1	7,2	14,14,15	0.60	0	17,19,21	0.85	0
7	NAG	K	2	7	14,14,15	0.53	0	17,19,21	0.61	0
6	NAG	M	1	2,6	14,14,15	0.52	0	17,19,21	0.73	0
6	NAG	M	2	6	14,14,15	0.54	0	17,19,21	0.66	0
6	BMA	M	3	6	11,11,12	0.67	0	15,15,17	0.92	1 (6%)
6	MAN	M	4	6	11,11,12	0.66	0	15,15,17	0.71	0
7	NAG	N	1	7,2	14,14,15	0.60	0	17,19,21	0.90	0
7	NAG	N	2	7	14,14,15	0.53	0	17,19,21	0.63	0

In the following table, the Chirals column lists the number of chiral outliers, the number of chiral centers analysed, the number of these observed in the model and the number defined in the Chemical Component Dictionary. Similar counts are reported in the Torsion and Rings columns.

'-' means no outliers of that kind were identified.

Mol	Type	Chain	Res	Link	Chirals	Torsions	Rings
6	NAG	G	1	2,6	-	0/6/23/26	0/1/1/1
6	NAG	G	2	6	-	0/6/23/26	0/1/1/1
6	BMA	G	3	6	-	0/2/19/22	0/1/1/1
6	MAN	G	4	6	-	0/2/19/22	0/1/1/1
7	NAG	K	1	7,2	-	2/6/23/26	0/1/1/1
7	NAG	K	2	7	-	1/6/23/26	0/1/1/1
6	NAG	M	1	2,6	-	0/6/23/26	0/1/1/1
6	NAG	M	2	6	-	0/6/23/26	0/1/1/1
6	BMA	M	3	6	-	0/2/19/22	0/1/1/1
6	MAN	M	4	6	-	0/2/19/22	0/1/1/1
7	NAG	N	1	7,2	-	0/6/23/26	0/1/1/1
7	NAG	N	2	7	-	2/6/23/26	0/1/1/1

There are no bond length outliers.

All (1) bond angle outliers are listed below:

Mol	Chain	Res	Type	Atoms	Z	Observed(°)	Ideal(°)
6	M	3	BMA	C1-C2-C3	2.47	112.70	109.67

There are no chirality outliers.

All (5) torsion outliers are listed below:

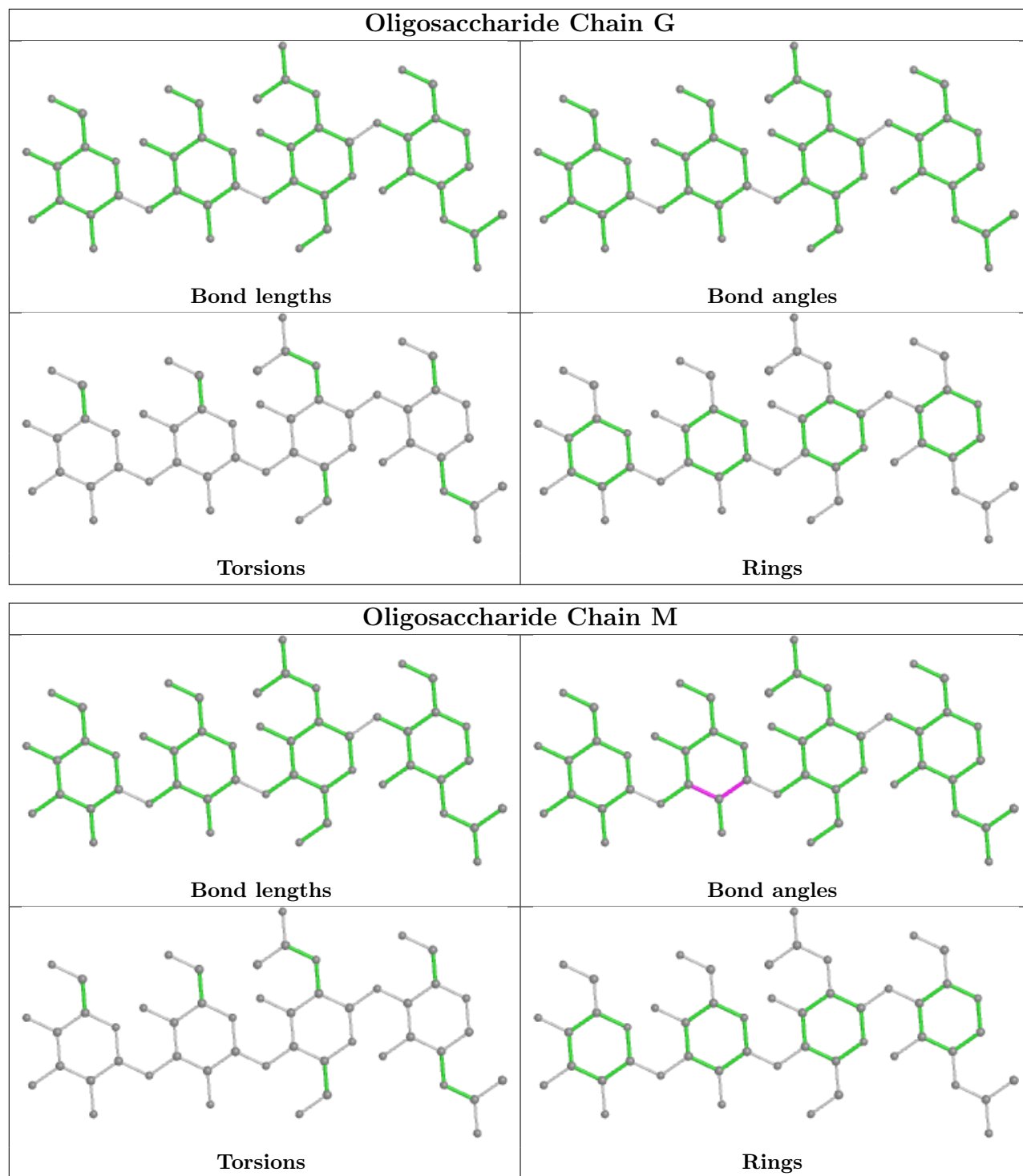
Mol	Chain	Res	Type	Atoms
7	N	2	NAG	C8-C7-N2-C2
7	N	2	NAG	O7-C7-N2-C2
7	K	2	NAG	O5-C5-C6-O6
7	K	1	NAG	C8-C7-N2-C2
7	K	1	NAG	O7-C7-N2-C2

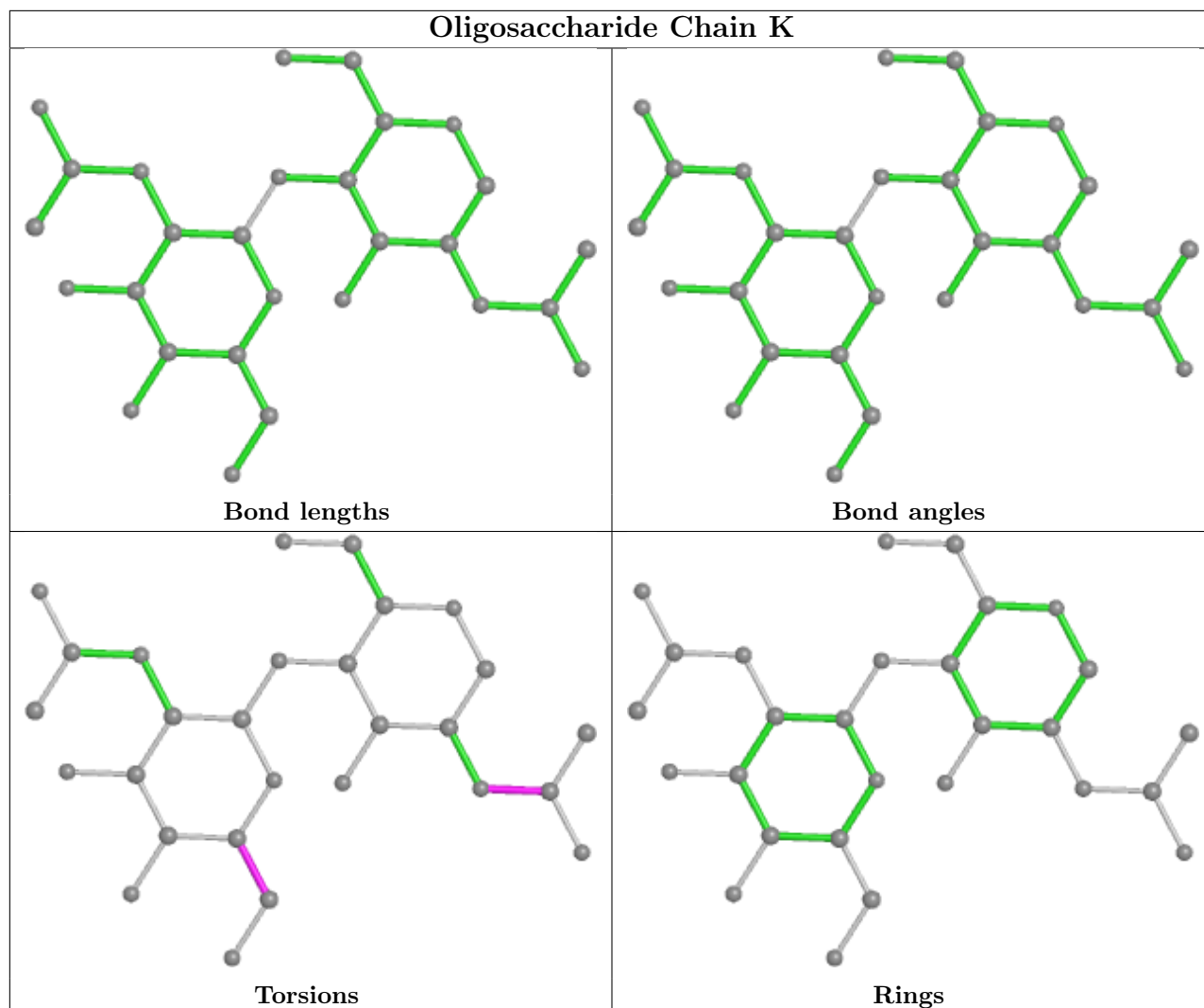
There are no ring outliers.

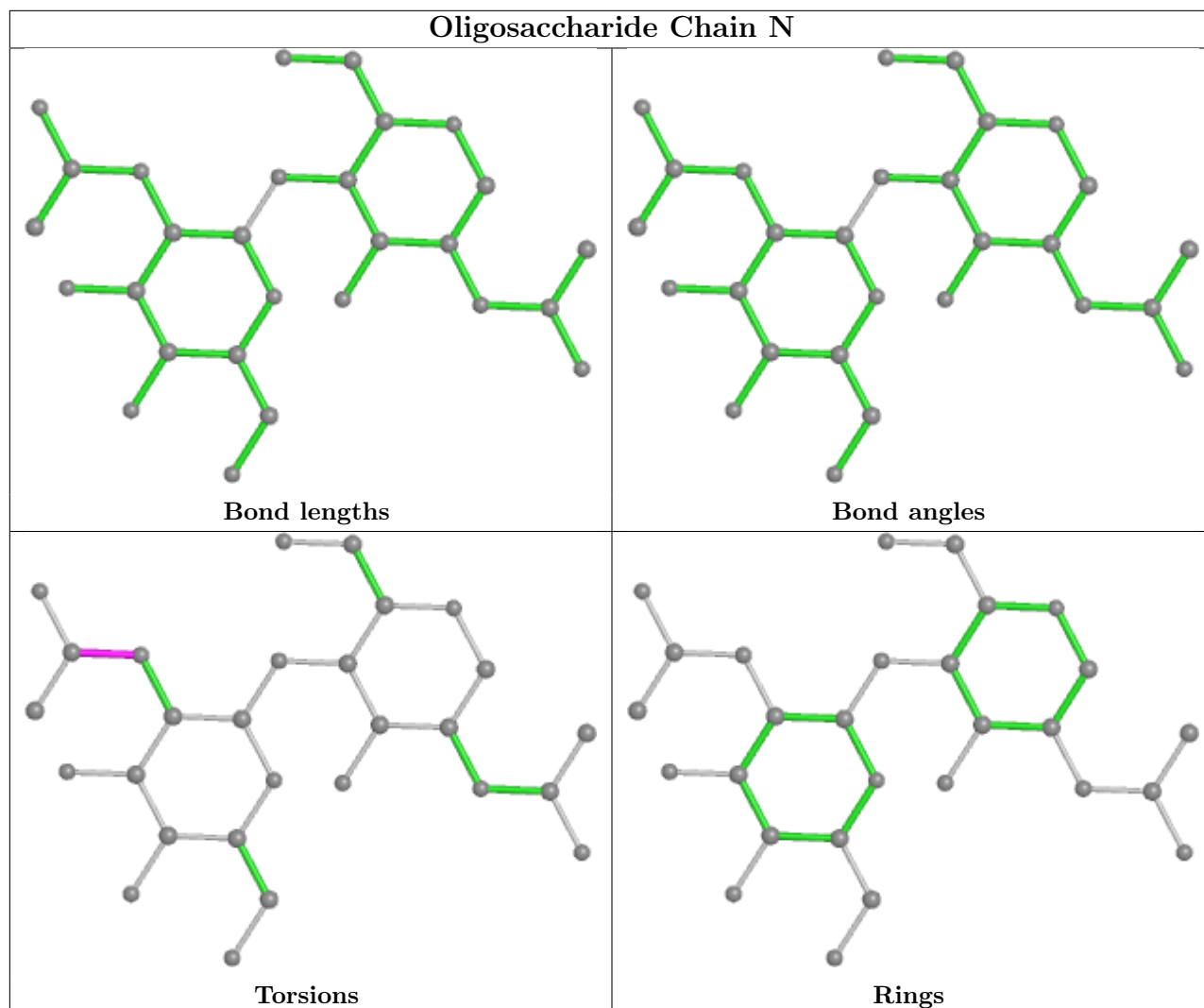
1 monomer is involved in 1 short contact:

Mol	Chain	Res	Type	Clashes	Symm-Clashes
7	N	2	NAG	1	0

The following is a two-dimensional graphical depiction of Mogul quality analysis of bond lengths, bond angles, torsion angles, and ring geometry for oligosaccharide.







5.6 Ligand geometry [i](#)

Of 22 ligands modelled in this entry, 15 are monoatomic - leaving 7 for Mogul analysis.

In the following table, the Counts columns list the number of bonds (or angles) for which Mogul statistics could be retrieved, the number of bonds (or angles) that are observed in the model and the number of bonds (or angles) that are defined in the Chemical Component Dictionary. The Link column lists molecule types, if any, to which the group is linked. The Z score for a bond length (or angle) is the number of standard deviations the observed value is removed from the expected value. A bond length (or angle) with $|Z| > 2$ is considered an outlier worth inspection. RMSZ is the root-mean-square of all Z scores of the bond lengths (or angles).

Mol	Type	Chain	Res	Link	Bond lengths			Bond angles		
					Counts	RMSZ	$\# Z > 2$	Counts	RMSZ	$\# Z > 2$
8	SO4	L	1215	-	4,4,4	0.14	0	6,6,6	0.04	0
8	SO4	C	1454	-	4,4,4	0.14	0	6,6,6	0.07	0
11	NAG	B	3099	2	14,14,15	0.52	0	17,19,21	0.67	0
8	SO4	A	1456	-	4,4,4	0.15	0	6,6,6	0.06	0

Mol	Type	Chain	Res	Link	Bond lengths			Bond angles		
					Counts	RMSZ	# Z > 2	Counts	RMSZ	# Z > 2
8	SO4	A	1457	-	4,4,4	0.15	0	6,6,6	0.04	0
11	NAG	D	3099	2	14,14,15	0.52	0	17,19,21	0.60	0
8	SO4	A	1458	-	4,4,4	0.14	0	6,6,6	0.05	0

In the following table, the Chirals column lists the number of chiral outliers, the number of chiral centers analysed, the number of these observed in the model and the number defined in the Chemical Component Dictionary. Similar counts are reported in the Torsion and Rings columns. '-' means no outliers of that kind were identified.

Mol	Type	Chain	Res	Link	Chirals	Torsions	Rings
11	NAG	B	3099	2	-	0/6/23/26	0/1/1/1
11	NAG	D	3099	2	-	0/6/23/26	0/1/1/1

There are no bond length outliers.

There are no bond angle outliers.

There are no chirality outliers.

There are no torsion outliers.

There are no ring outliers.

2 monomers are involved in 2 short contacts:

Mol	Chain	Res	Type	Clashes	Symm-Clashes
8	A	1456	SO4	1	0
11	D	3099	NAG	1	0

5.7 Other polymers [i](#)

There are no such residues in this entry.

5.8 Polymer linkage issues [i](#)

There are no chain breaks in this entry.

6 Fit of model and data [i](#)

6.1 Protein, DNA and RNA chains [i](#)

In the following table, the column labelled ‘#RSRZ > 2’ contains the number (and percentage) of RSRZ outliers, followed by percent RSRZ outliers for the chain as percentile scores relative to all X-ray entries and entries of similar resolution. The OWAB column contains the minimum, median, 95th percentile and maximum values of the occupancy-weighted average B-factor per residue. The column labelled ‘Q < 0.9’ lists the number of (and percentage) of residues with an average occupancy less than 0.9.

Mol	Chain	Analysed	<RSRZ>	#RSRZ>2	OWAB(Å ²)	Q<0.9
1	A	455/457 (99%)	0.32	3 (0%) 87 76	24, 43, 79, 140	0
1	C	453/457 (99%)	0.45	7 (1%) 73 57	38, 76, 118, 171	0
2	B	465/472 (98%)	0.79	62 (13%) 3 2	27, 81, 172, 213	1 (0%)
2	D	469/472 (99%)	1.05	87 (18%) 1 0	53, 113, 175, 222	2 (0%)
3	E	216/221 (97%)	1.46	59 (27%) 0 0	86, 137, 188, 213	0
3	H	216/221 (97%)	0.57	24 (11%) 5 3	51, 103, 172, 205	0
4	F	214/214 (100%)	1.59	73 (34%) 0 0	86, 140, 209, 281	1 (0%)
4	L	214/214 (100%)	0.55	14 (6%) 18 11	55, 95, 132, 234	0
5	I	6/6 (100%)	0.57	0 100 100	40, 58, 89, 90	0
5	J	6/6 (100%)	2.01	3 (50%) 0 0	43, 46, 86, 105	3 (50%)
All	All	2714/2740 (99%)	0.78	332 (12%) 4 2	24, 91, 175, 281	7 (0%)

The worst 5 of 332 RSRZ outliers are listed below:

Mol	Chain	Res	Type	RSRZ
4	F	193	THR	12.8
4	F	181	LEU	11.3
4	F	214	CYS	7.7
4	F	192	TYR	7.5
2	B	36	PRO	7.2

6.2 Non-standard residues in protein, DNA, RNA chains [i](#)

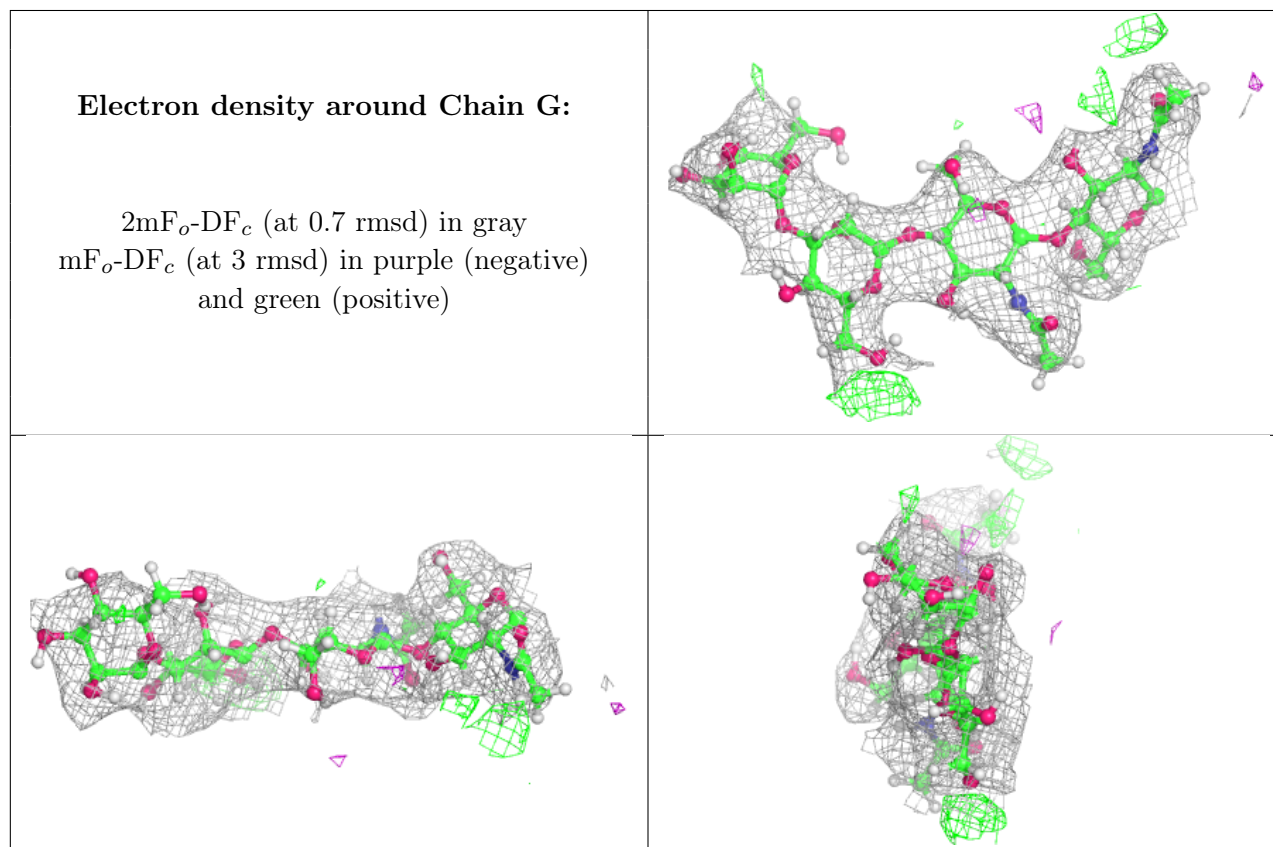
There are no non-standard protein/DNA/RNA residues in this entry.

6.3 Carbohydrates [i](#)

In the following table, the Atoms column lists the number of modelled atoms in the group and the number defined in the chemical component dictionary. The B-factors column lists the minimum, median, 95th percentile and maximum values of B factors of atoms in the group. The column labelled 'Q< 0.9' lists the number of atoms with occupancy less than 0.9.

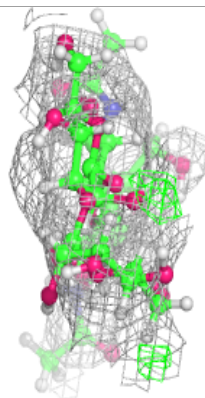
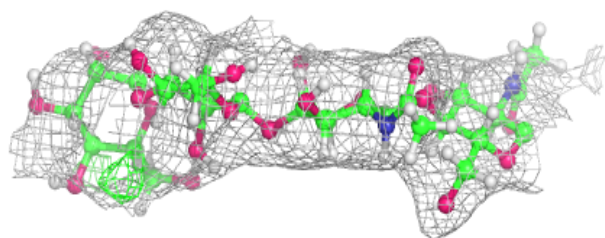
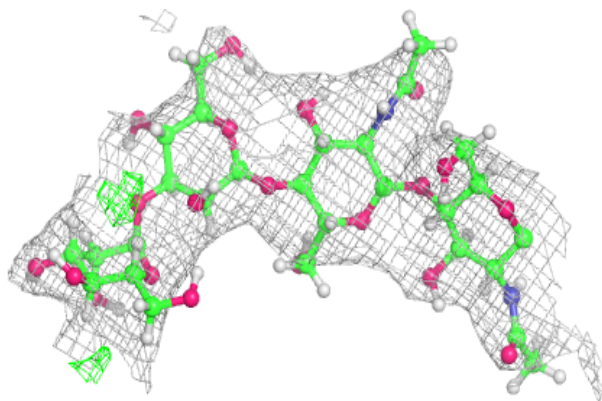
Mol	Type	Chain	Res	Atoms	RSCC	RSR	B-factors(Å ²)	Q<0.9
6	BMA	M	3	11/12	0.78	0.24	151,175,210,210	0
6	BMA	G	3	11/12	0.81	0.15	98,137,174,181	0
7	NAG	N	2	14/15	0.81	0.52	148,177,206,217	0
7	NAG	N	1	14/15	0.83	0.39	120,157,185,191	0
6	MAN	G	4	11/12	0.88	0.23	112,141,170,172	0
6	MAN	M	4	11/12	0.88	0.37	164,181,216,218	0
7	NAG	K	2	14/15	0.89	0.34	116,166,203,209	0
7	NAG	K	1	14/15	0.90	0.24	102,132,164,164	0
6	NAG	M	2	14/15	0.90	0.21	86,119,155,164	0
6	NAG	G	2	14/15	0.92	0.15	66,92,116,124	0
6	NAG	M	1	14/15	0.95	0.18	65,88,111,111	0
6	NAG	G	1	14/15	0.97	0.17	28,45,64,85	0

The following is a graphical depiction of the model fit to experimental electron density for oligosaccharide. Each fit is shown from different orientation to approximate a three-dimensional view.

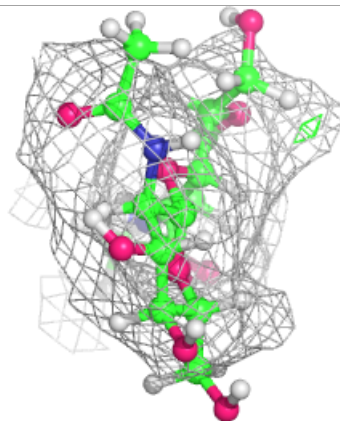
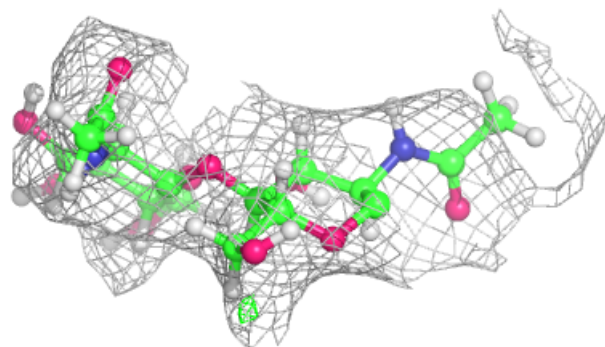
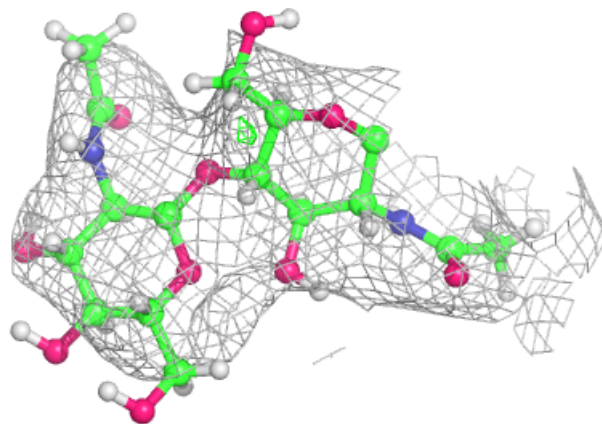


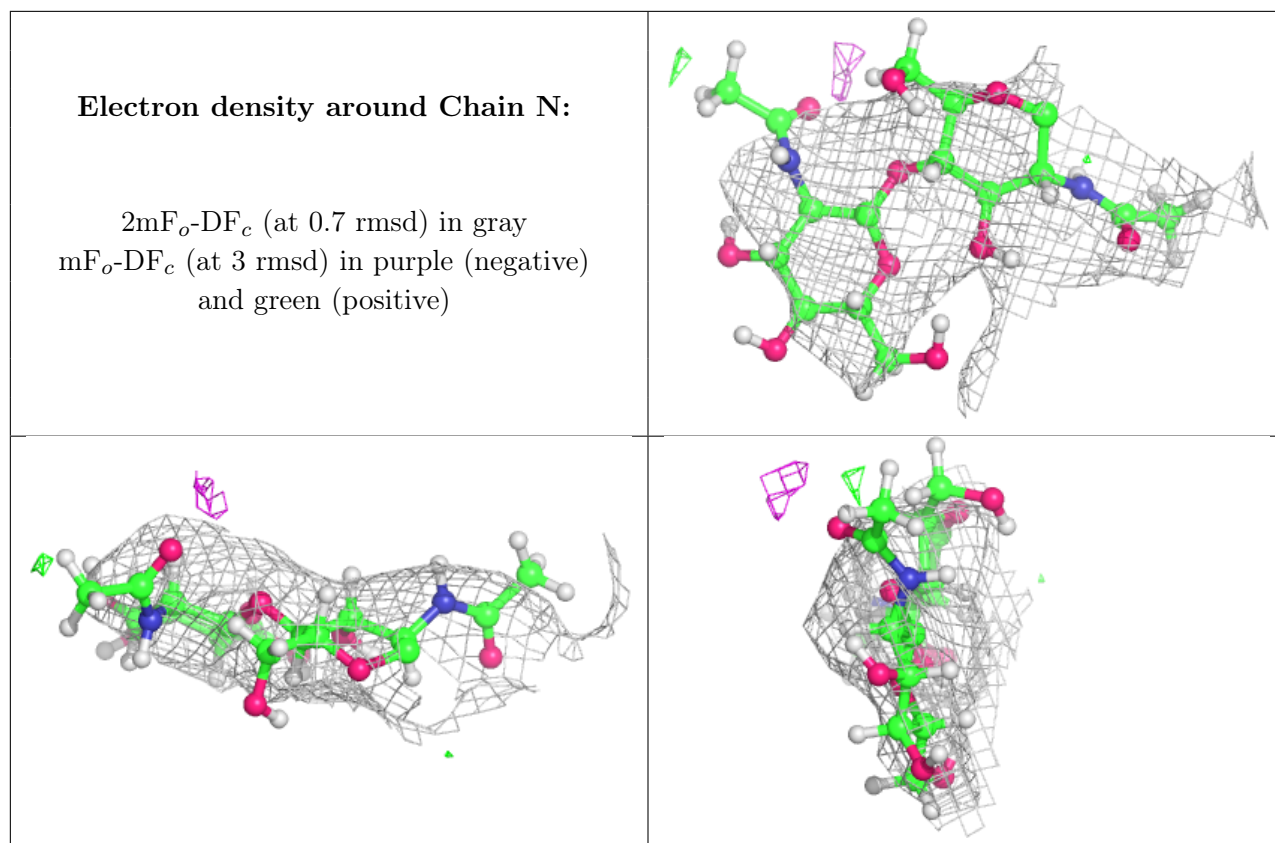
Electron density around Chain M:

$2mF_o-DF_c$ (at 0.7 rmsd) in gray
 mF_o-DF_c (at 3 rmsd) in purple (negative)
and green (positive)

**Electron density around Chain K:**

$2mF_o-DF_c$ (at 0.7 rmsd) in gray
 mF_o-DF_c (at 3 rmsd) in purple (negative)
and green (positive)





6.4 Ligands [i](#)

In the following table, the Atoms column lists the number of modelled atoms in the group and the number defined in the chemical component dictionary. The B-factors column lists the minimum, median, 95th percentile and maximum values of B factors of atoms in the group. The column labelled 'Q<0.9' lists the number of atoms with occupancy less than 0.9.

Mol	Type	Chain	Res	Atoms	RSCC	RSR	B-factors(Å ²)	Q<0.9
11	NAG	D	3099	14/15	0.75	0.46	130,164,195,198	0
8	SO4	C	1454	5/5	0.80	0.28	137,139,143,148	0
8	SO4	A	1458	5/5	0.87	0.40	135,143,150,167	0
10	MN	D	2002	1/1	0.88	0.27	205,205,205,205	0
11	NAG	B	3099	14/15	0.90	0.36	114,153,183,188	0
9	CA	C	2004	1/1	0.91	0.10	111,111,111,111	0
8	SO4	L	1215	5/5	0.92	0.22	134,136,137,142	0
12	CL	C	1455	1/1	0.92	0.31	72,72,72,72	0
8	SO4	A	1456	5/5	0.93	0.17	75,98,98,117	0
8	SO4	A	1457	5/5	0.94	0.26	97,98,113,136	0
10	MN	D	2001	1/1	0.95	0.22	101,101,101,101	0
9	CA	C	2006	1/1	0.97	0.13	69,69,69,69	0
9	CA	C	2005	1/1	0.97	0.08	90,90,90,90	0
10	MN	D	2003	1/1	0.98	0.17	104,104,104,104	0

Continued on next page...

Continued from previous page...

Mol	Type	Chain	Res	Atoms	RSCC	RSR	B-factors(\AA^2)	Q<0.9
9	CA	A	2004	1/1	0.98	0.12	49,49,49,49	0
9	CA	A	2005	1/1	0.99	0.15	40,40,40,40	0
9	CA	C	2007	1/1	0.99	0.15	65,65,65,65	0
10	MN	B	2002	1/1	0.99	0.21	65,65,65,65	0
10	MN	B	2003	1/1	0.99	0.23	51,51,51,51	0
9	CA	A	2006	1/1	0.99	0.18	38,38,38,38	0
9	CA	A	2007	1/1	1.00	0.21	39,39,39,39	0
10	MN	B	2001	1/1	1.00	0.24	42,42,42,42	0

6.5 Other polymers [i](#)

There are no such residues in this entry.