



Full wwPDB X-ray Structure Validation Report ⓘ

Jul 31, 2024 – 02:10 PM JST

PDB ID : 8ZFN
Title : Crystal Structure of Human PPARgamma Ligand Binding Domain in Complex with GW9662 and BVT.13
Authors : Shang, J.; Kojetin, D.J.
Deposited on : 2024-05-08
Resolution : 2.54 Å(reported)

This is a Full wwPDB X-ray Structure Validation Report for a publicly released PDB entry.

We welcome your comments at validation@mail.wwpdb.org

A user guide is available at

<https://www.wwpdb.org/validation/2017/XrayValidationReportHelp>

with specific help available everywhere you see the ⓘ symbol.

The types of validation reports are described at

<http://www.wwpdb.org/validation/2017/FAQs#types>.

The following versions of software and data (see [references ⓘ](#)) were used in the production of this report:

MolProbity : 4.02b-467
Mogul : 1.8.5 (274361), CSD as541be (2020)
Xtriage (Phenix) : 1.13
EDS : 2.37.1
buster-report : 1.1.7 (2018)
Percentile statistics : 20191225.v01 (using entries in the PDB archive December 25th 2019)
Refmac : 5.8.0158
CCP4 : 7.0.044 (Gargrove)
Ideal geometry (proteins) : Engh & Huber (2001)
Ideal geometry (DNA, RNA) : Parkinson et al. (1996)
Validation Pipeline (wwPDB-VP) : 2.37.1

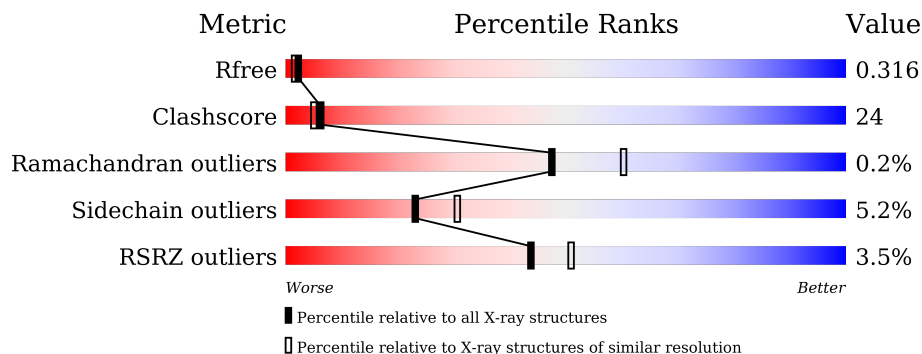
1 Overall quality at a glance

The following experimental techniques were used to determine the structure:

X-RAY DIFFRACTION

The reported resolution of this entry is 2.54 Å.

Percentile scores (ranging between 0-100) for global validation metrics of the entry are shown in the following graphic. The table shows the number of entries on which the scores are based.



Metric	Whole archive (#Entries)	Similar resolution (#Entries, resolution range(Å))
R_{free}	130704	1284 (2.56-2.52)
Clashscore	141614	1332 (2.56-2.52)
Ramachandran outliers	138981	1315 (2.56-2.52)
Sidechain outliers	138945	1315 (2.56-2.52)
RSRZ outliers	127900	1272 (2.56-2.52)

The table below summarises the geometric issues observed across the polymeric chains and their fit to the electron density. The red, orange, yellow and green segments of the lower bar indicate the fraction of residues that contain outliers for ≥ 3 , 2, 1 and 0 types of geometric quality criteria respectively. A grey segment represents the fraction of residues that are not modelled. The numeric value for each fraction is indicated below the corresponding segment, with a dot representing fractions $\leq 5\%$. The upper red bar (where present) indicates the fraction of residues that have poor fit to the electron density. The numeric value is given above the bar.

Mol	Chain	Length	Quality of chain
1	A	275	 4% 53% 39% • 5%
1	B	275	 3% 56% 35% • 7%

The following table lists non-polymeric compounds, carbohydrate monomers and non-standard residues in protein, DNA, RNA chains that are outliers for geometric or electron-density-fit criteria:

Mol	Type	Chain	Res	Chirality	Geometry	Clashes	Electron density
3	PLB	A	502	-	-	X	-

2 Entry composition [i](#)

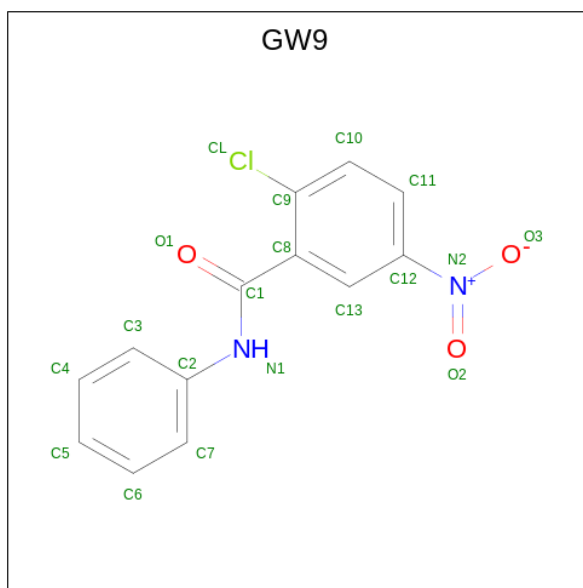
There are 4 unique types of molecules in this entry. The entry contains 4274 atoms, of which 0 are hydrogens and 0 are deuteriums.

In the tables below, the ZeroOcc column contains the number of atoms modelled with zero occupancy, the AltConf column contains the number of residues with at least one atom in alternate conformation and the Trace column contains the number of residues modelled with at most 2 atoms.

- Molecule 1 is a protein called Peroxisome proliferator-activated receptor gamma.

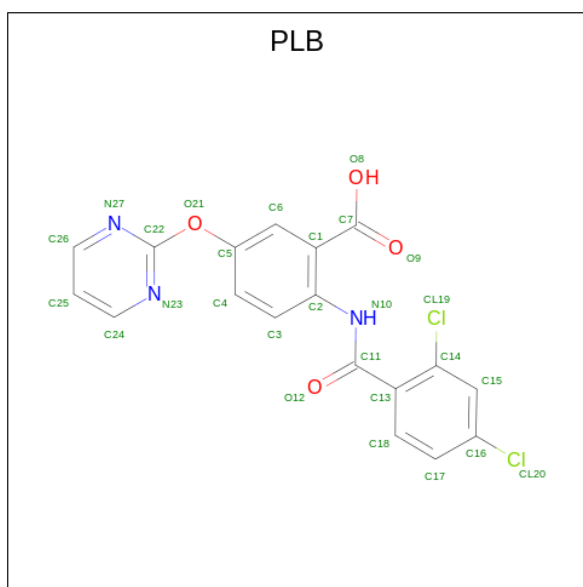
Mol	Chain	Residues	Atoms					ZeroOcc	AltConf	Trace
			Total	C	N	O	S			
1	A	261	Total 2094	C 1352	N 343	O 389	S 10	0	0	0
1	B	256	Total 2055	C 1330	N 336	O 380	S 9	0	0	0

- Molecule 2 is 2-chloro-5-nitro-N-phenylbenzamide (three-letter code: GW9) (formula: $C_{13}H_9ClN_2O_3$) (labeled as "Ligand of Interest" by depositor).



Mol	Chain	Residues	Atoms				ZeroOcc	AltConf
			Total	C	N	O		
2	A	1	Total 18	C 13	N 2	O 3	0	0
2	B	1	Total 18	C 13	N 2	O 3	0	0

- Molecule 3 is 2-[(2,4-DICHLOROBENZOYL)AMINO]-5-(PYRIMIDIN-2-YLOXY)BE NZOIC ACID (three-letter code: PLB) (formula: $C_{18}H_{11}Cl_2N_3O_4$) (labeled as "Ligand of Interest" by depositor).



Mol	Chain	Residues	Atoms				ZeroOcc	AltConf	
			Total	C	Cl	N			O
3	A	1	27	18	2	3	4	0	0
3	B	1	27	18	2	3	4	0	0

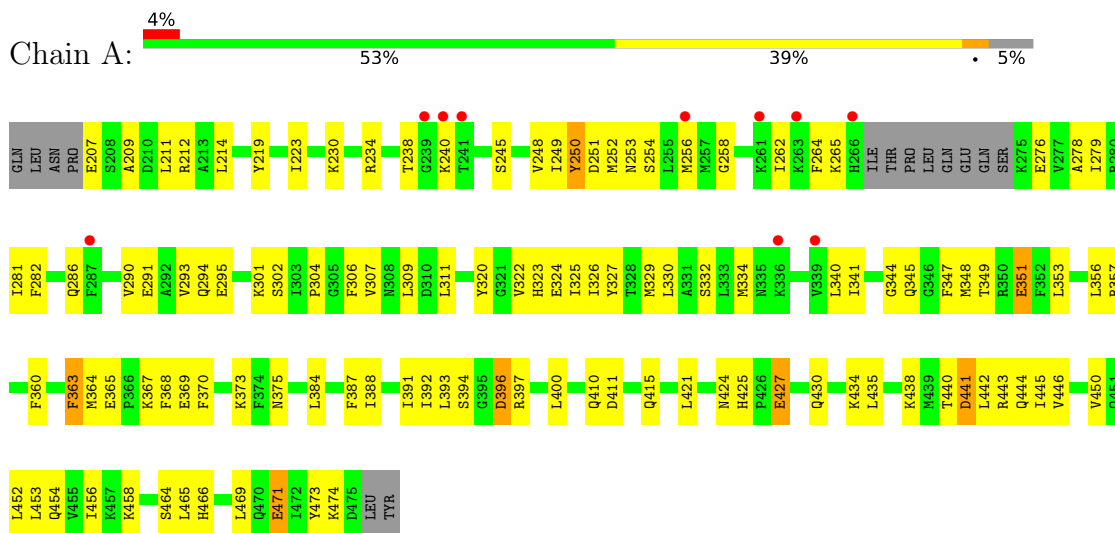
- Molecule 4 is water.

Mol	Chain	Residues	Atoms		ZeroOcc	AltConf
			Total	O		
4	A	19	19	19	0	0
4	B	16	16	16	0	0

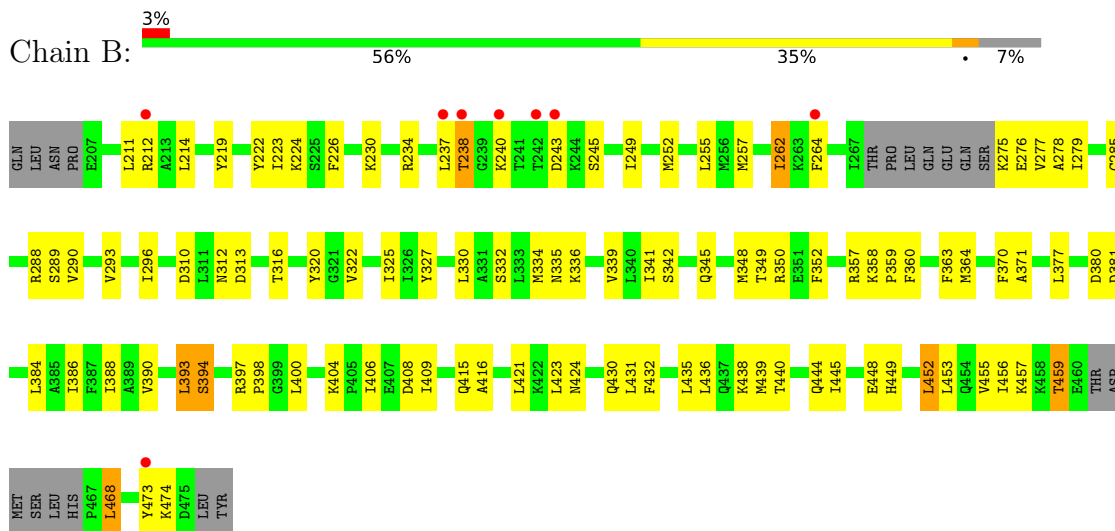
3 Residue-property plots i

These plots are drawn for all protein, RNA, DNA and oligosaccharide chains in the entry. The first graphic for a chain summarises the proportions of the various outlier classes displayed in the second graphic. The second graphic shows the sequence view annotated by issues in geometry and electron density. Residues are color-coded according to the number of geometric quality criteria for which they contain at least one outlier: green = 0, yellow = 1, orange = 2 and red = 3 or more. A red dot above a residue indicates a poor fit to the electron density ($RSRZ > 2$). Stretches of 2 or more consecutive residues without any outlier are shown as a green connector. Residues present in the sample, but not in the model, are shown in grey.

- Molecule 1: Peroxisome proliferator-activated receptor gamma



- Molecule 1: Peroxisome proliferator-activated receptor gamma



4 Data and refinement statistics

Property	Value	Source
Space group	C 1 2 1	Depositor
Cell constants a, b, c, α , β , γ	92.19Å 61.99Å 118.84Å 90.00° 102.38° 90.00°	Depositor
Resolution (Å)	58.04 – 2.54 58.04 – 2.54	Depositor EDS
% Data completeness (in resolution range)	98.2 (58.04-2.54) 98.2 (58.04-2.54)	Depositor EDS
R_{merge}	0.09	Depositor
R_{sym}	(Not available)	Depositor
$\langle I/\sigma(I) \rangle$ ¹	1.56 (at 2.55Å)	Xtrriage
Refinement program	PHENIX 1.11.1_2575	Depositor
R, R_{free}	0.247 , 0.321 0.252 , 0.316	Depositor DCC
R_{free} test set	1022 reflections (4.77%)	wwPDB-VP
Wilson B-factor (Å ²)	54.2	Xtrriage
Anisotropy	0.450	Xtrriage
Bulk solvent k_{sol} (e/Å ³), B_{sol} (Å ²)	0.32 , 46.5	EDS
L-test for twinning ²	$\langle L \rangle = 0.52$, $\langle L^2 \rangle = 0.35$	Xtrriage
Estimated twinning fraction	No twinning to report.	Xtrriage
F_o, F_c correlation	0.93	EDS
Total number of atoms	4274	wwPDB-VP
Average B, all atoms (Å ²)	65.0	wwPDB-VP

Xtrriage's analysis on translational NCS is as follows: *The largest off-origin peak in the Patterson function is 5.80% of the height of the origin peak. No significant pseudotranslation is detected.*

¹Intensities estimated from amplitudes.

²Theoretical values of $\langle |L| \rangle$, $\langle L^2 \rangle$ for acentric reflections are 0.5, 0.333 respectively for untwinned datasets, and 0.375, 0.2 for perfectly twinned datasets.

5 Model quality

5.1 Standard geometry

Bond lengths and bond angles in the following residue types are not validated in this section: PLB, GW9

The Z score for a bond length (or angle) is the number of standard deviations the observed value is removed from the expected value. A bond length (or angle) with $|Z| > 5$ is considered an outlier worth inspection. RMSZ is the root-mean-square of all Z scores of the bond lengths (or angles).

Mol	Chain	Bond lengths		Bond angles	
		RMSZ	# Z >5	RMSZ	# Z >5
1	A	0.50	0/2129	0.69	0/2865
1	B	0.50	0/2088	0.69	0/2807
All	All	0.50	0/4217	0.69	0/5672

There are no bond length outliers.

There are no bond angle outliers.

There are no chirality outliers.

There are no planarity outliers.

5.2 Too-close contacts

In the following table, the Non-H and H(model) columns list the number of non-hydrogen atoms and hydrogen atoms in the chain respectively. The H(added) column lists the number of hydrogen atoms added and optimized by MolProbity. The Clashes column lists the number of clashes within the asymmetric unit, whereas Symm-Clashes lists symmetry-related clashes.

Mol	Chain	Non-H	H(model)	H(added)	Clashes	Symm-Clashes
1	A	2094	0	2156	106	0
1	B	2055	0	2124	101	0
2	A	18	0	9	2	0
2	B	18	0	9	2	0
3	A	27	0	10	8	0
3	B	27	0	10	3	0
4	A	19	0	0	5	0
4	B	16	0	0	4	0
All	All	4274	0	4318	208	0

The all-atom clashscore is defined as the number of clashes found per 1000 atoms (including hydrogen atoms). The all-atom clashscore for this structure is 24.

All (208) close contacts within the same asymmetric unit are listed below, sorted by their clash magnitude.

Atom-1	Atom-2	Interatomic distance (Å)	Clash overlap (Å)
1:A:363:PHE:CD1	1:A:452:LEU:HD12	1.59	1.36
1:B:212:ARG:NH2	1:B:423:LEU:HD11	1.46	1.27
1:A:363:PHE:CE1	1:A:452:LEU:HD12	1.83	1.14
1:B:456:ILE:HD12	1:B:459:THR:CG2	1.92	1.00
1:B:212:ARG:HH21	1:B:423:LEU:HD11	0.97	1.00
1:B:456:ILE:HD12	1:B:459:THR:HG23	1.44	0.99
1:A:363:PHE:CD1	1:A:452:LEU:CD1	2.47	0.98
1:B:212:ARG:NH2	1:B:423:LEU:CD1	2.29	0.95
1:B:285:CYS:SG	4:B:612:HOH:O	2.23	0.95
1:B:456:ILE:O	1:B:459:THR:HG23	1.66	0.94
1:A:290:VAL:HG22	1:A:469:LEU:CD1	1.99	0.93
1:B:334:MET:HE2	1:B:371:ALA:HB2	1.50	0.92
1:B:404:LYS:HG2	1:B:408:ASP:OD2	1.71	0.91
1:A:290:VAL:HG22	1:A:469:LEU:HD13	1.56	0.86
1:B:334:MET:CE	1:B:371:ALA:HB2	2.03	0.86
1:A:360:PHE:HE1	1:A:456:ILE:HG12	1.42	0.84
1:B:468:LEU:HD12	1:B:468:LEU:O	1.77	0.83
1:B:334:MET:HE2	1:B:371:ALA:CB	2.08	0.83
1:A:320:TYR:HB3	1:A:397:ARG:HH11	1.45	0.82
1:A:240:LYS:N	1:A:240:LYS:HD3	1.97	0.80
1:B:334:MET:CE	1:B:371:ALA:CB	2.59	0.80
1:B:238:THR:HG22	1:B:335:ASN:HD22	1.47	0.79
1:A:290:VAL:CG2	1:A:469:LEU:CD1	2.60	0.79
1:B:238:THR:HG22	1:B:335:ASN:ND2	1.97	0.79
1:A:324:GLU:HA	1:A:442:LEU:HD22	1.66	0.78
1:A:341:ILE:HG13	1:A:348:MET:HE3	1.66	0.78
1:B:212:ARG:HH21	1:B:423:LEU:CD1	1.89	0.77
1:A:234:ARG:HH22	1:A:375:ASN:ND2	1.82	0.77
1:A:290:VAL:CG2	1:A:469:LEU:HD13	2.14	0.76
1:A:286:GLN:HE22	1:A:465:LEU:HA	1.51	0.76
1:A:251:ASP:OD1	1:A:253:ASN:N	2.21	0.73
1:A:396:ASP:OD1	1:A:443:ARG:NH2	2.22	0.72
1:B:456:ILE:HD12	1:B:459:THR:HG21	1.71	0.71
1:B:456:ILE:HA	1:B:459:THR:CG2	2.21	0.71
1:A:364:MET:HG3	3:A:502:PLB:H15	1.73	0.70
1:A:230:LYS:NZ	4:A:601:HOH:O	2.25	0.70
1:A:440:THR:HG22	1:B:440:THR:HA	1.74	0.69
1:B:456:ILE:O	1:B:459:THR:CG2	2.40	0.69
1:A:430:GLN:O	1:A:434:LYS:HG3	1.94	0.68
1:B:393:LEU:HD22	1:B:409:ILE:HB	1.76	0.67

Continued on next page...

Continued from previous page...

Atom-1	Atom-2	Interatomic distance (Å)	Clash overlap (Å)
1:A:471:GLU:HA	1:A:471:GLU:OE1	1.93	0.67
1:A:363:PHE:CG	1:A:452:LEU:HD12	2.25	0.66
1:B:276:GLU:OE1	1:B:357:ARG:NH1	2.29	0.66
1:B:234:ARG:NH2	1:B:334:MET:O	2.24	0.65
1:B:262:ILE:HG21	1:B:264:PHE:CZ	2.31	0.65
1:A:454:GLN:NE2	4:A:604:HOH:O	2.28	0.65
1:A:349:THR:HG22	1:A:351:GLU:H	1.62	0.64
1:B:449:HIS:CE1	1:B:453:LEU:HD11	2.32	0.64
1:B:313:ASP:HB3	1:B:406:ILE:HD11	1.80	0.64
1:A:363:PHE:CG	1:A:452:LEU:CD1	2.82	0.63
1:A:427:GLU:N	1:A:427:GLU:OE2	2.30	0.63
1:A:440:THR:CG2	1:B:440:THR:HG22	2.28	0.63
1:A:234:ARG:O	1:A:238:THR:HG23	1.99	0.62
1:A:207:GLU:HG3	1:A:209:ALA:H	1.65	0.62
1:B:349:THR:HG23	1:B:352:PHE:H	1.65	0.61
1:B:334:MET:HG2	1:B:339:VAL:HG23	1.83	0.61
1:A:394:SER:HB2	1:A:397:ARG:HE	1.66	0.61
1:B:444:GLN:O	1:B:448:GLU:HG2	2.01	0.60
1:B:277:VAL:HG13	1:B:278:ALA:N	2.16	0.59
1:B:262:ILE:HD11	1:B:345:GLN:HB2	1.85	0.58
3:A:502:PLB:O12	3:A:502:PLB:H3	2.03	0.58
1:A:325:ILE:HG23	1:A:388:ILE:HD12	1.86	0.57
1:B:277:VAL:HG13	1:B:278:ALA:H	1.71	0.56
1:A:353:LEU:O	1:A:356:LEU:HD12	2.05	0.56
1:A:249:ILE:HA	1:A:254:SER:HB2	1.88	0.56
2:B:501:GW9:H3	4:B:612:HOH:O	2.06	0.55
1:B:249:ILE:O	1:B:349:THR:HG22	2.06	0.55
1:A:286:GLN:NE2	1:A:466:HIS:H	2.04	0.55
1:A:364:MET:CG	3:A:502:PLB:H15	2.37	0.55
1:A:384:LEU:O	1:A:388:ILE:HG12	2.06	0.55
1:B:404:LYS:CG	1:B:408:ASP:OD2	2.52	0.55
1:B:456:ILE:HA	1:B:459:THR:HG22	1.87	0.55
1:A:252:MET:O	1:A:256:MET:HG2	2.07	0.55
1:A:360:PHE:CE1	1:A:456:ILE:HG12	2.34	0.54
1:A:440:THR:HG23	1:B:440:THR:HG22	1.88	0.54
1:A:325:ILE:O	1:A:329:MET:HG3	2.07	0.54
1:A:219:TYR:O	1:A:223:ILE:HG12	2.08	0.54
1:A:306:PHE:HA	1:A:309:LEU:HD12	1.90	0.54
1:B:276:GLU:CG	1:B:279:ILE:HD12	2.37	0.54
1:B:439:MET:SD	1:B:439:MET:O	2.67	0.53
1:A:290:VAL:CG2	1:A:469:LEU:HD11	2.38	0.53

Continued on next page...

Continued from previous page...

Atom-1	Atom-2	Interatomic distance (Å)	Clash overlap (Å)
1:A:254:SER:O	1:A:258:GLY:N	2.33	0.53
1:B:212:ARG:CZ	1:B:423:LEU:CD1	2.87	0.52
1:B:310:ASP:OD2	1:B:312:ASN:HB2	2.09	0.52
1:B:384:LEU:O	1:B:388:ILE:HG23	2.09	0.52
1:A:357:ARG:NH2	1:A:360:PHE:CZ	2.77	0.52
1:B:377:LEU:HD11	1:B:438:LYS:HE3	1.90	0.52
1:B:230:LYS:HG3	1:B:332:SER:HB3	1.91	0.52
3:A:502:PLB:O8	3:A:502:PLB:N10	2.41	0.52
1:B:238:THR:CG2	1:B:335:ASN:HD22	2.19	0.52
1:A:248:VAL:HG22	1:A:347:PHE:HB3	1.92	0.51
1:A:276:GLU:OE2	1:A:357:ARG:HD3	2.11	0.51
1:A:291:GLU:O	1:A:295:GLU:HG3	2.11	0.51
1:A:392:ILE:HG22	1:A:393:LEU:HD23	1.91	0.51
3:A:502:PLB:O12	3:A:502:PLB:C3	2.57	0.51
1:B:224:LYS:N	1:B:224:LYS:HD2	2.26	0.51
1:B:275:LYS:N	1:B:275:LYS:HD2	2.26	0.51
1:B:276:GLU:HG2	1:B:279:ILE:HD12	1.93	0.51
1:B:288:ARG:HG3	2:B:501:GW9:C4	2.41	0.51
1:A:290:VAL:O	1:A:294:GLN:HG3	2.10	0.50
1:A:325:ILE:HD11	1:A:392:ILE:HG13	1.92	0.50
1:A:290:VAL:HG23	1:A:469:LEU:CD1	2.41	0.50
1:A:307:VAL:HG22	4:A:615:HOH:O	2.10	0.50
1:B:262:ILE:HG21	1:B:264:PHE:CE1	2.47	0.50
1:A:387:PHE:CE2	1:A:391:ILE:HD11	2.47	0.50
1:B:289:SER:O	1:B:293:VAL:HG23	2.12	0.50
1:B:474:LYS:HG2	1:B:474:LYS:O	2.12	0.50
1:A:301:LYS:HG3	1:A:307:VAL:HG11	1.93	0.50
1:A:278:ALA:HA	1:A:356:LEU:HD22	1.94	0.49
3:B:502:PLB:O8	3:B:502:PLB:N10	2.45	0.49
1:B:409:ILE:N	4:B:602:HOH:O	2.44	0.49
1:A:421:LEU:HD11	1:A:435:LEU:HD23	1.94	0.49
1:B:288:ARG:HD2	1:B:288:ARG:O	2.13	0.48
1:A:440:THR:HG22	1:B:440:THR:HG22	1.95	0.48
1:B:249:ILE:HD12	1:B:348:MET:HE2	1.96	0.48
1:B:342:SER:O	1:B:342:SER:OG	2.27	0.48
1:A:320:TYR:CB	1:A:397:ARG:HD2	2.44	0.48
1:B:334:MET:CE	1:B:371:ALA:HB3	2.43	0.48
1:A:324:GLU:HB3	1:A:442:LEU:HD13	1.96	0.47
1:A:394:SER:HA	1:A:410:GLN:OE1	2.14	0.47
1:A:334:MET:HE1	3:A:502:PLB:CL20	2.51	0.47
1:B:364:MET:SD	3:B:502:PLB:H15	2.54	0.47

Continued on next page...

Continued from previous page...

Atom-1	Atom-2	Interatomic distance (Å)	Clash overlap (Å)
1:B:421:LEU:HD12	1:B:432:PHE:HA	1.97	0.47
1:B:219:TYR:CZ	1:B:223:ILE:HD11	2.50	0.47
1:A:320:TYR:HB3	1:A:397:ARG:NH1	2.21	0.47
1:B:334:MET:HG2	1:B:339:VAL:CG2	2.45	0.47
1:A:411:ASP:OD1	1:B:430:GLN:HB2	2.15	0.47
1:A:424:ASN:HB3	1:A:425:HIS:CD2	2.50	0.47
1:A:450:VAL:O	1:A:454:GLN:HG2	2.15	0.46
1:B:380:ASP:OD2	1:B:424:ASN:ND2	2.46	0.46
1:A:250:TYR:CD2	1:A:250:TYR:N	2.83	0.46
1:A:293:VAL:HG22	1:A:322:VAL:HG21	1.98	0.46
1:A:369:GLU:O	1:A:373:LYS:HG2	2.16	0.46
1:B:370:PHE:HB2	1:B:445:ILE:HD11	1.98	0.46
1:A:281:ILE:HD12	1:A:356:LEU:HD21	1.98	0.45
1:A:464:SER:O	1:A:465:LEU:HD13	2.17	0.45
1:B:243:ASP:O	1:B:243:ASP:OD1	2.34	0.45
1:B:336:LYS:O	1:B:350:ARG:HD2	2.16	0.45
1:A:430:GLN:HA	4:A:606:HOH:O	2.16	0.45
1:A:363:PHE:HZ	1:A:453:LEU:HD13	1.82	0.45
1:A:438:LYS:HD3	1:A:438:LYS:HA	1.72	0.45
1:A:458:LYS:NZ	4:A:610:HOH:O	2.50	0.45
1:A:326:ILE:HG22	1:A:327:TYR:CD1	2.51	0.45
1:B:255:LEU:CD2	1:B:277:VAL:HG23	2.47	0.45
1:B:320:TYR:CZ	1:B:398:PRO:HG2	2.50	0.45
1:A:301:LYS:HG3	1:A:307:VAL:CG1	2.47	0.45
1:B:423:LEU:HD23	1:B:423:LEU:HA	1.67	0.44
1:A:282:PHE:CE1	2:A:501:GW9:H11	2.52	0.44
1:A:290:VAL:HG23	1:A:469:LEU:HD11	1.99	0.44
1:B:290:VAL:HG21	1:B:473:TYR:CE1	2.53	0.44
1:A:364:MET:SD	1:A:367:LYS:NZ	2.88	0.44
1:B:252:MET:SD	1:B:277:VAL:HG21	2.58	0.44
1:B:276:GLU:CD	1:B:357:ARG:HH11	2.21	0.44
1:B:468:LEU:HD12	1:B:468:LEU:C	2.28	0.44
1:A:262:ILE:HD11	1:A:345:GLN:O	2.18	0.44
1:B:211:LEU:HD22	1:B:415:GLN:HB3	2.00	0.44
1:A:357:ARG:NH2	1:A:360:PHE:CE2	2.86	0.43
1:A:330:LEU:HD13	2:A:501:GW9:C5	2.47	0.43
3:A:502:PLB:O12	3:A:502:PLB:CL19	2.73	0.43
1:B:222:TYR:CE1	1:B:381:ASP:HB3	2.53	0.43
1:A:330:LEU:HD11	3:A:502:PLB:H17	2.00	0.43
1:A:363:PHE:CZ	1:A:453:LEU:HD13	2.53	0.43
1:A:370:PHE:CG	1:A:445:ILE:HD11	2.54	0.43

Continued on next page...

Continued from previous page...

Atom-1	Atom-2	Interatomic distance (Å)	Clash overlap (Å)
1:B:394:SER:O	1:B:397:ARG:HG2	2.17	0.43
1:A:214:LEU:HD11	1:A:304:PRO:HG2	2.01	0.43
1:B:226:PHE:CE1	1:B:296:ILE:HD13	2.53	0.43
1:B:393:LEU:HD22	1:B:409:ILE:CB	2.47	0.43
1:B:388:ILE:HD13	1:B:388:ILE:HG21	1.84	0.43
1:A:474:LYS:O	1:A:474:LYS:HG2	2.18	0.43
1:B:214:LEU:HD23	1:B:416:ALA:HB2	2.00	0.43
1:B:334:MET:HE1	1:B:371:ALA:HB2	1.96	0.43
1:B:341:ILE:HD13	1:B:348:MET:HE3	2.01	0.43
1:A:446:VAL:O	1:A:450:VAL:HG22	2.18	0.43
1:A:276:GLU:HB3	1:A:279:ILE:HD12	2.01	0.42
1:B:276:GLU:CD	1:B:279:ILE:HD12	2.39	0.42
1:B:293:VAL:HG22	1:B:322:VAL:HG21	2.00	0.42
1:B:240:LYS:HB3	1:B:240:LYS:HE3	1.57	0.42
1:B:406:ILE:C	4:B:602:HOH:O	2.57	0.42
1:B:393:LEU:HD22	1:B:409:ILE:CG2	2.50	0.42
1:B:334:MET:CG	1:B:339:VAL:HG23	2.48	0.42
1:B:364:MET:HE2	3:B:502:PLB:CL20	2.56	0.42
1:A:234:ARG:NH2	1:A:375:ASN:ND2	2.59	0.42
1:A:334:MET:HE2	1:A:368:PHE:CD1	2.55	0.42
1:B:386:ILE:O	1:B:390:VAL:HG23	2.20	0.42
1:A:435:LEU:O	1:A:438:LYS:HB2	2.20	0.41
1:B:327:TYR:HD1	1:B:330:LEU:HD12	1.85	0.41
1:A:452:LEU:O	1:A:452:LEU:HD22	2.21	0.41
1:A:230:LYS:HG3	1:A:332:SER:HB3	2.01	0.41
1:A:324:GLU:OE2	1:A:443:ARG:HD3	2.20	0.41
1:A:365:GLU:O	1:A:368:PHE:HB2	2.20	0.41
1:B:358:LYS:O	1:B:358:LYS:HD3	2.21	0.41
1:B:431:LEU:O	1:B:435:LEU:N	2.43	0.41
1:B:432:PHE:CZ	1:B:436:LEU:HD11	2.56	0.41
1:A:211:LEU:HD22	1:A:415:GLN:HB3	2.03	0.41
1:A:441:ASP:O	1:A:445:ILE:HG13	2.21	0.41
1:B:238:THR:CG2	1:B:335:ASN:ND2	2.75	0.41
1:B:456:ILE:CD1	1:B:459:THR:HG21	2.45	0.41
1:B:316:THR:HB	1:B:400:LEU:HD23	2.03	0.40
1:B:452:LEU:HA	1:B:455:VAL:HG22	2.02	0.40
1:A:400:LEU:HD23	1:A:400:LEU:HA	1.94	0.40
1:A:212:ARG:HA	1:A:212:ARG:HD2	1.75	0.40
1:A:279:ILE:HG13	1:A:360:PHE:HE2	1.85	0.40
1:A:323:HIS:NE2	1:A:473:TYR:CZ	2.89	0.40
1:A:340:LEU:HB3	1:A:344:GLY:HA2	2.02	0.40

Continued on next page...

Continued from previous page...

Atom-1	Atom-2	Interatomic distance (Å)	Clash overlap (Å)
1:A:393:LEU:O	1:A:410:GLN:HB2	2.21	0.40
1:B:296:ILE:HD12	1:B:325:ILE:HG21	2.02	0.40
1:A:320:TYR:HB2	1:A:397:ARG:HD2	2.03	0.40
1:B:359:PRO:HB2	1:B:360:PHE:CD2	2.56	0.40

There are no symmetry-related clashes.

5.3 Torsion angles [i](#)

5.3.1 Protein backbone [i](#)

In the following table, the Percentiles column shows the percent Ramachandran outliers of the chain as a percentile score with respect to all X-ray entries followed by that with respect to entries of similar resolution.

The Analysed column shows the number of residues for which the backbone conformation was analysed, and the total number of residues.

Mol	Chain	Analysed	Favoured	Allowed	Outliers	Percentiles	
1	A	257/275 (94%)	240 (93%)	17 (7%)	0	100	100
1	B	250/275 (91%)	231 (92%)	18 (7%)	1 (0%)	34	46
All	All	507/550 (92%)	471 (93%)	35 (7%)	1 (0%)	47	60

All (1) Ramachandran outliers are listed below:

Mol	Chain	Res	Type
1	B	237	LEU

5.3.2 Protein sidechains [i](#)

In the following table, the Percentiles column shows the percent sidechain outliers of the chain as a percentile score with respect to all X-ray entries followed by that with respect to entries of similar resolution.

The Analysed column shows the number of residues for which the sidechain conformation was analysed, and the total number of residues.

Mol	Chain	Analysed	Rotameric	Outliers	Percentiles	
1	A	234/248 (94%)	221 (94%)	13 (6%)	21	28

Continued on next page...

Continued from previous page...

Mol	Chain	Analysed	Rotameric	Outliers	Percentiles	
1	B	229/248 (92%)	218 (95%)	11 (5%)	25	34
All	All	463/496 (93%)	439 (95%)	24 (5%)	23	30

All (24) residues with a non-rotameric sidechain are listed below:

Mol	Chain	Res	Type
1	A	245	SER
1	A	250	TYR
1	A	264	PHE
1	A	265	LYS
1	A	302	SER
1	A	311	LEU
1	A	351	GLU
1	A	363	PHE
1	A	396	ASP
1	A	427	GLU
1	A	441	ASP
1	A	444	GLN
1	A	471	GLU
1	B	238	THR
1	B	245	SER
1	B	257	MET
1	B	262	ILE
1	B	363	PHE
1	B	393	LEU
1	B	394	SER
1	B	452	LEU
1	B	457	LYS
1	B	459	THR
1	B	468	LEU

Sometimes sidechains can be flipped to improve hydrogen bonding and reduce clashes. All (5) such sidechains are listed below:

Mol	Chain	Res	Type
1	A	286	GLN
1	A	314	GLN
1	A	375	ASN
1	A	415	GLN
1	B	470	GLN

5.3.3 RNA [i](#)

There are no RNA molecules in this entry.

5.4 Non-standard residues in protein, DNA, RNA chains [i](#)

There are no non-standard protein/DNA/RNA residues in this entry.

5.5 Carbohydrates [i](#)

There are no monosaccharides in this entry.

5.6 Ligand geometry [i](#)

4 ligands are modelled in this entry.

In the following table, the Counts columns list the number of bonds (or angles) for which Mogul statistics could be retrieved, the number of bonds (or angles) that are observed in the model and the number of bonds (or angles) that are defined in the Chemical Component Dictionary. The Link column lists molecule types, if any, to which the group is linked. The Z score for a bond length (or angle) is the number of standard deviations the observed value is removed from the expected value. A bond length (or angle) with $|Z| > 2$ is considered an outlier worth inspection. RMSZ is the root-mean-square of all Z scores of the bond lengths (or angles).

Mol	Type	Chain	Res	Link	Bond lengths			Bond angles		
					Counts	RMSZ	# Z > 2	Counts	RMSZ	# Z > 2
3	PLB	A	502	-	29,29,29	1.75	8 (27%)	40,40,40	3.67	16 (40%)
2	GW9	B	501	1	18,19,20	1.53	4 (22%)	23,25,27	1.43	2 (8%)
2	GW9	A	501	1	18,19,20	1.31	2 (11%)	23,25,27	0.55	0
3	PLB	B	502	-	29,29,29	1.50	7 (24%)	40,40,40	3.65	19 (47%)

In the following table, the Chirals column lists the number of chiral outliers, the number of chiral centers analysed, the number of these observed in the model and the number defined in the Chemical Component Dictionary. Similar counts are reported in the Torsion and Rings columns. '-' means no outliers of that kind were identified.

Mol	Type	Chain	Res	Link	Chirals	Torsions	Rings
3	PLB	A	502	-	-	4/16/16/16	0/3/3/3
2	GW9	B	501	1	-	8/10/12/12	0/2/2/2
2	GW9	A	501	1	-	6/10/12/12	0/2/2/2
3	PLB	B	502	-	-	5/16/16/16	0/3/3/3

All (21) bond length outliers are listed below:

Mol	Chain	Res	Type	Atoms	Z	Observed(Å)	Ideal(Å)
2	B	501	GW9	C1-N1	4.24	1.47	1.35
2	A	501	GW9	C1-N1	3.85	1.46	1.35
3	A	502	PLB	C11-N10	3.68	1.45	1.35
3	A	502	PLB	C22-N23	3.55	1.37	1.32
3	A	502	PLB	O21-C22	3.49	1.43	1.34
3	A	502	PLB	C22-N27	3.34	1.37	1.32
3	B	502	PLB	C11-N10	3.07	1.43	1.35
3	B	502	PLB	O21-C22	2.91	1.41	1.34
3	B	502	PLB	C22-N23	2.70	1.36	1.32
3	A	502	PLB	C14-CL19	2.68	1.80	1.73
2	B	501	GW9	C8-C1	2.64	1.55	1.50
3	A	502	PLB	O12-C11	-2.58	1.18	1.23
3	B	502	PLB	C22-N27	2.51	1.36	1.32
2	B	501	GW9	C2-N1	2.48	1.46	1.41
2	A	501	GW9	O2-N2	-2.35	1.18	1.22
3	B	502	PLB	O12-C11	-2.23	1.18	1.23
2	B	501	GW9	O2-N2	-2.22	1.19	1.22
3	B	502	PLB	C1-C7	2.16	1.54	1.49
3	A	502	PLB	C1-C2	-2.15	1.37	1.41
3	B	502	PLB	C14-CL19	2.11	1.78	1.73
3	A	502	PLB	C1-C7	2.03	1.54	1.49

All (37) bond angle outliers are listed below:

Mol	Chain	Res	Type	Atoms	Z	Observed(°)	Ideal(°)
3	A	502	PLB	C24-N23-C22	13.94	121.35	114.41
3	B	502	PLB	C24-N23-C22	12.66	120.71	114.41
3	A	502	PLB	C26-N27-C22	10.65	119.71	114.41
3	B	502	PLB	C26-N27-C22	10.43	119.60	114.41
3	A	502	PLB	N23-C22-N27	-7.01	118.49	127.99
3	B	502	PLB	C2-N10-C11	-6.67	108.64	126.93
3	B	502	PLB	N23-C22-N27	-5.93	119.96	127.99
3	A	502	PLB	C22-O21-C5	-5.68	104.17	118.78
3	B	502	PLB	C14-C13-C11	-5.22	114.26	122.58
3	B	502	PLB	C18-C13-C14	5.15	123.83	117.78
3	A	502	PLB	C2-C1-C7	-4.91	115.93	121.72
2	B	501	GW9	C13-C12-N2	4.70	122.89	118.75
3	B	502	PLB	C22-O21-C5	-4.47	107.28	118.78
3	A	502	PLB	C15-C14-C13	-4.46	118.28	121.58
3	A	502	PLB	C2-N10-C11	-3.88	116.28	126.93
3	B	502	PLB	C3-C2-C1	3.63	124.16	119.38
2	B	501	GW9	C11-C12-N2	-3.59	116.68	119.38

Continued on next page...

Continued from previous page...

Mol	Chain	Res	Type	Atoms	Z	Observed(°)	Ideal(°)
3	B	502	PLB	C2-C1-C7	-3.31	117.82	121.72
3	A	502	PLB	C13-C11-N10	3.27	122.30	116.06
3	A	502	PLB	C18-C13-C14	3.19	121.53	117.78
3	A	502	PLB	O12-C11-C13	-2.99	115.55	121.01
3	B	502	PLB	C15-C14-CL19	2.94	123.23	118.49
3	B	502	PLB	C17-C18-C13	-2.77	116.45	120.94
3	B	502	PLB	C24-C25-C26	2.68	120.51	116.67
3	B	502	PLB	C13-C14-CL19	-2.66	117.07	121.00
3	B	502	PLB	C25-C24-N23	-2.62	119.14	123.43
3	A	502	PLB	C6-C1-C7	2.59	125.18	117.84
3	B	502	PLB	C15-C14-C13	-2.55	119.69	121.58
3	B	502	PLB	C6-C1-C7	2.46	124.83	117.84
3	B	502	PLB	C3-C2-N10	-2.44	116.14	121.80
3	B	502	PLB	O8-C7-O9	-2.44	117.93	123.35
3	A	502	PLB	C25-C24-N23	-2.39	119.52	123.43
3	A	502	PLB	C14-C15-C16	2.16	121.13	118.71
3	A	502	PLB	C17-C16-CL20	2.07	122.59	119.35
3	A	502	PLB	C14-C13-C11	-2.07	119.28	122.58
3	A	502	PLB	O21-C5-C6	2.06	125.58	119.10
3	B	502	PLB	C25-C26-N27	-2.06	120.07	123.43

There are no chirality outliers.

All (23) torsion outliers are listed below:

Mol	Chain	Res	Type	Atoms
2	A	501	GW9	N1-C1-C8-C9
2	A	501	GW9	O1-C1-C8-C13
2	A	501	GW9	O1-C1-C8-C9
2	A	501	GW9	N1-C1-C8-C13
3	A	502	PLB	N27-C22-O21-C5
3	A	502	PLB	N23-C22-O21-C5
3	B	502	PLB	N27-C22-O21-C5
3	B	502	PLB	N23-C22-O21-C5
2	B	501	GW9	O1-C1-C8-C13
2	B	501	GW9	O1-C1-C8-C9
2	B	501	GW9	N1-C1-C8-C13
2	B	501	GW9	N1-C1-C8-C9
2	B	501	GW9	C7-C2-N1-C1
2	A	501	GW9	C3-C2-N1-C1
2	B	501	GW9	C3-C2-N1-C1
2	A	501	GW9	C7-C2-N1-C1
2	B	501	GW9	C11-C12-N2-O2

Continued on next page...

Continued from previous page...

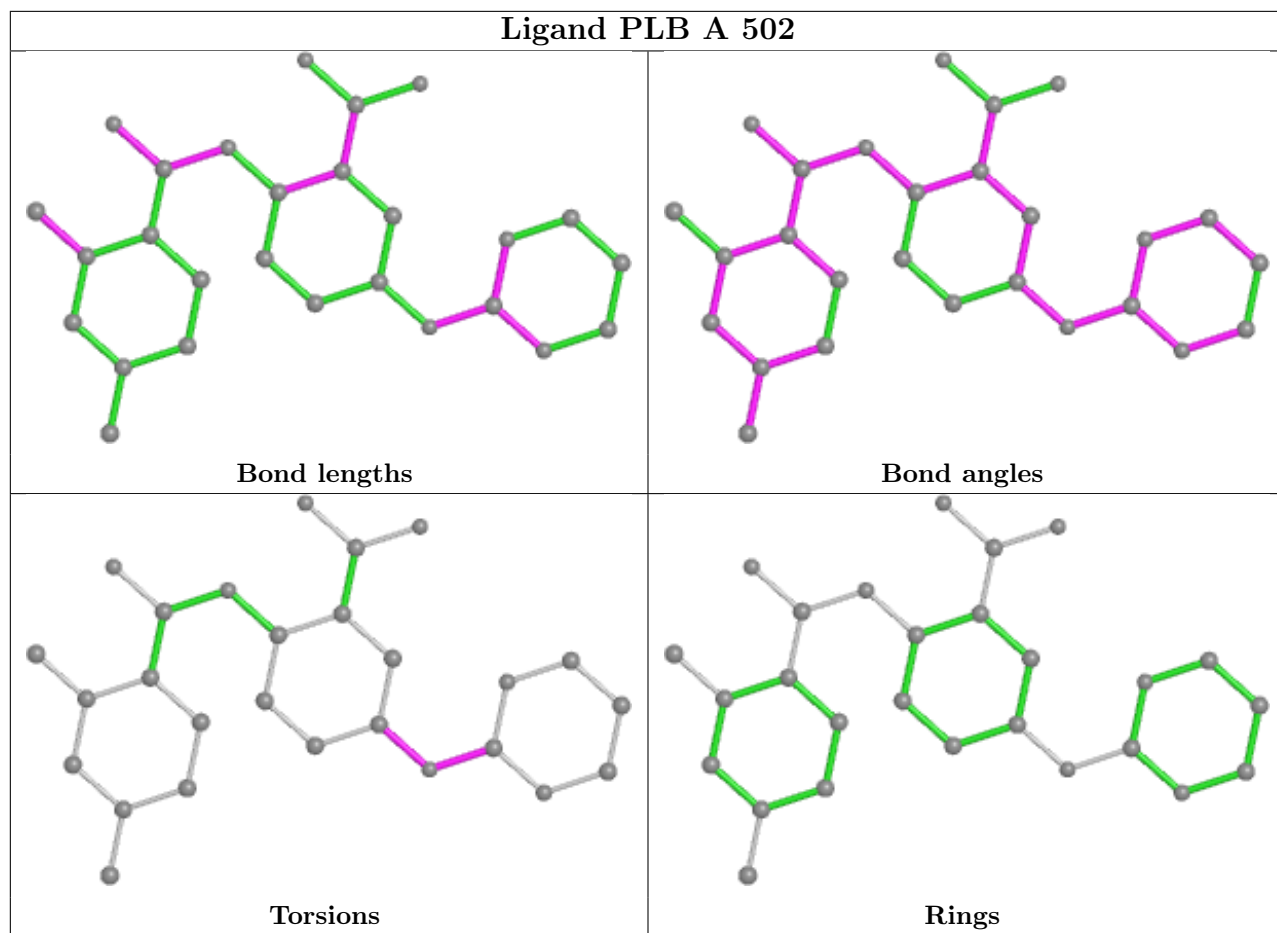
Mol	Chain	Res	Type	Atoms
2	B	501	GW9	C13-C12-N2-O2
3	A	502	PLB	C4-C5-O21-C22
3	B	502	PLB	C1-C2-N10-C11
3	B	502	PLB	C4-C5-O21-C22
3	B	502	PLB	C3-C2-N10-C11
3	A	502	PLB	C6-C5-O21-C22

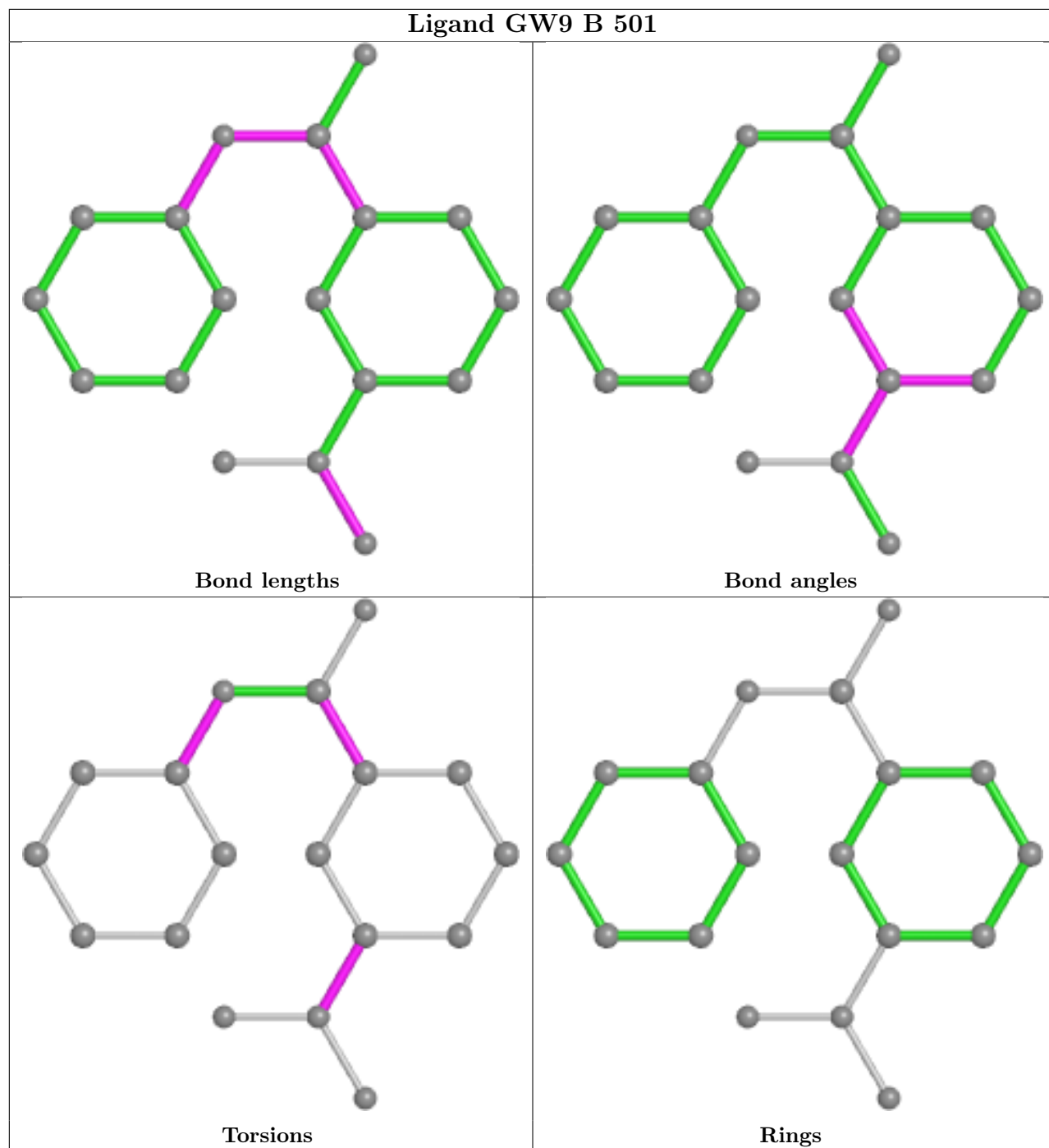
There are no ring outliers.

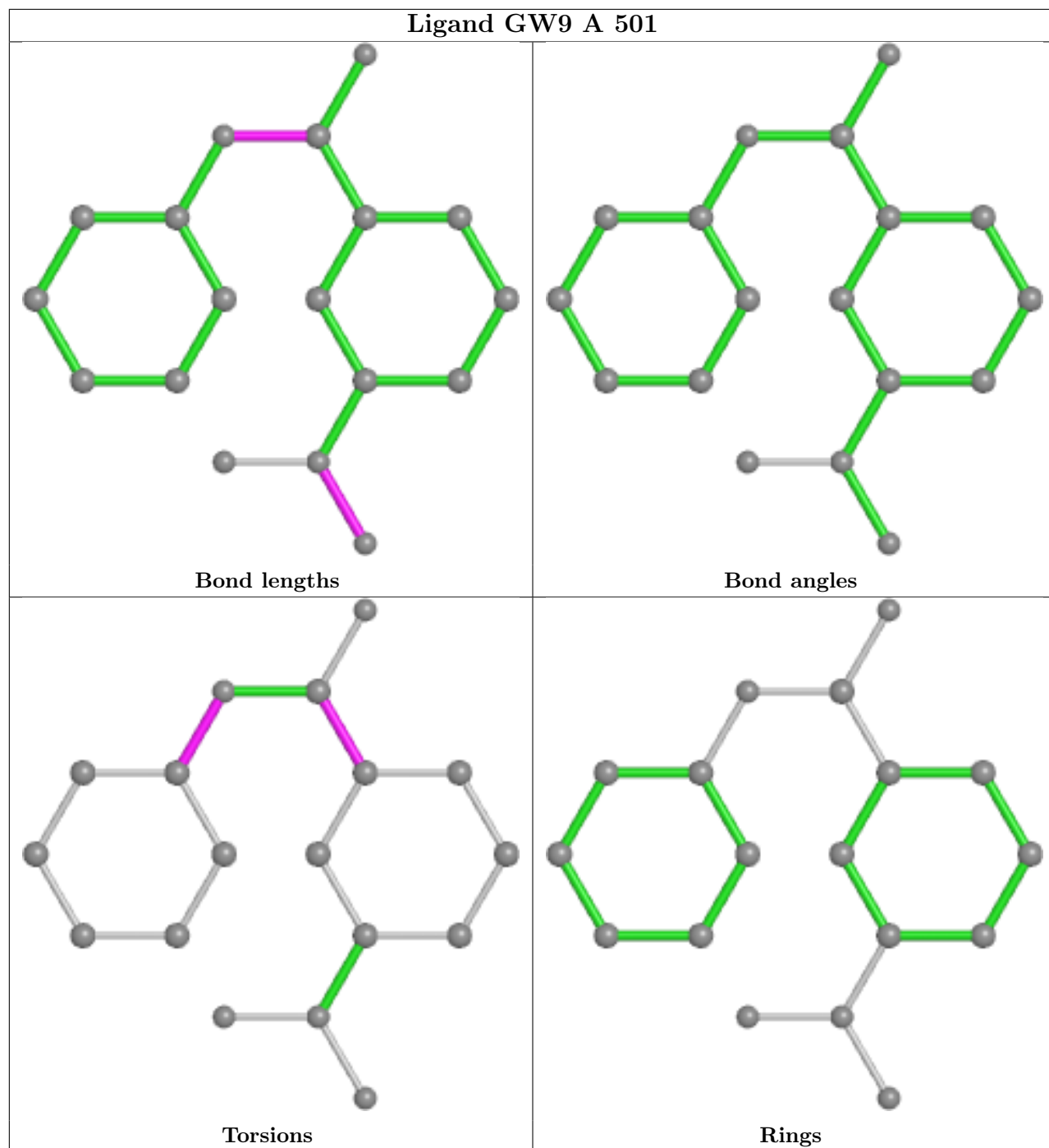
4 monomers are involved in 15 short contacts:

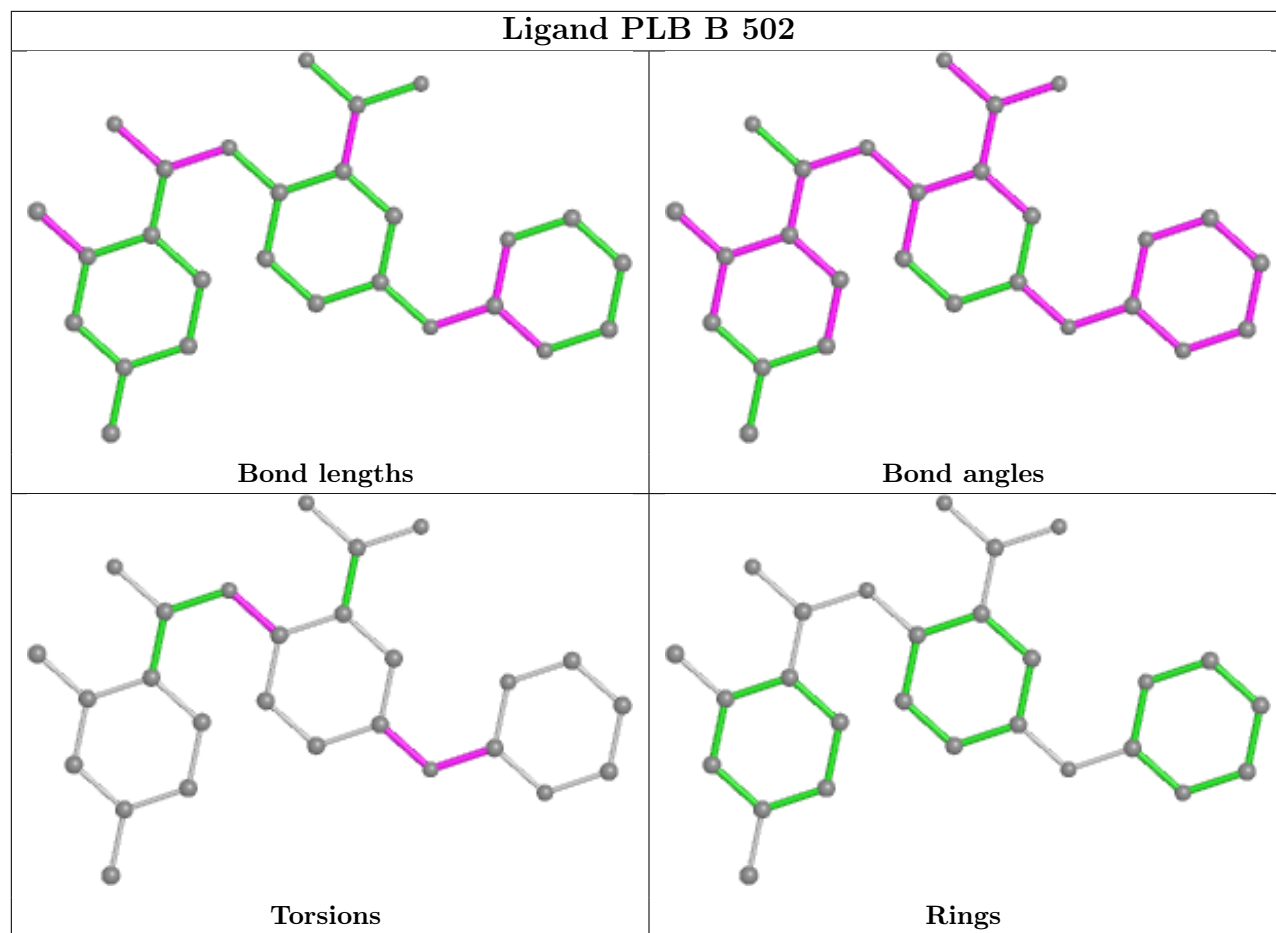
Mol	Chain	Res	Type	Clashes	Symm-Clashes
3	A	502	PLB	8	0
2	B	501	GW9	2	0
2	A	501	GW9	2	0
3	B	502	PLB	3	0

The following is a two-dimensional graphical depiction of Mogul quality analysis of bond lengths, bond angles, torsion angles, and ring geometry for all instances of the Ligand of Interest. In addition, ligands with molecular weight > 250 and outliers as shown on the validation Tables will also be included. For torsion angles, if less than 5% of the Mogul distribution of torsion angles is within 10 degrees of the torsion angle in question, then that torsion angle is considered an outlier. Any bond that is central to one or more torsion angles identified as an outlier by Mogul will be highlighted in the graph. For rings, the root-mean-square deviation (RMSD) between the ring in question and similar rings identified by Mogul is calculated over all ring torsion angles. If the average RMSD is greater than 60 degrees and the minimal RMSD between the ring in question and any Mogul-identified rings is also greater than 60 degrees, then that ring is considered an outlier. The outliers are highlighted in purple. The color gray indicates Mogul did not find sufficient equivalents in the CSD to analyse the geometry.









5.7 Other polymers [i](#)

There are no such residues in this entry.

5.8 Polymer linkage issues [i](#)

There are no chain breaks in this entry.

6 Fit of model and data [i](#)

6.1 Protein, DNA and RNA chains [i](#)

In the following table, the column labelled ‘#RSRZ > 2’ contains the number (and percentage) of RSRZ outliers, followed by percent RSRZ outliers for the chain as percentile scores relative to all X-ray entries and entries of similar resolution. The OWAB column contains the minimum, median, 95th percentile and maximum values of the occupancy-weighted average B-factor per residue. The column labelled ‘Q < 0.9’ lists the number of (and percentage) of residues with an average occupancy less than 0.9.

Mol	Chain	Analysed	<RSRZ>	#RSRZ>2	OWAB(Å ²)	Q<0.9
1	A	261/275 (94%)	0.43	10 (3%) 40 47	42, 60, 89, 104	0
1	B	256/275 (93%)	0.46	8 (3%) 49 56	40, 62, 95, 124	0
All	All	517/550 (94%)	0.44	18 (3%) 44 51	40, 62, 93, 124	0

All (18) RSRZ outliers are listed below:

Mol	Chain	Res	Type	RSRZ
1	B	243	ASP	4.3
1	B	240	LYS	4.0
1	A	240	LYS	3.8
1	A	287	PHE	3.2
1	B	238	THR	3.2
1	B	212	ARG	3.2
1	B	242	THR	3.2
1	B	473	TYR	2.9
1	A	261	LYS	2.7
1	A	241	THR	2.5
1	A	336	LYS	2.4
1	B	237	LEU	2.4
1	A	263	LYS	2.3
1	A	339	VAL	2.2
1	A	266	HIS	2.1
1	B	264	PHE	2.1
1	A	239	GLY	2.0
1	A	256	MET	2.0

6.2 Non-standard residues in protein, DNA, RNA chains [i](#)

There are no non-standard protein/DNA/RNA residues in this entry.

6.3 Carbohydrates [i](#)

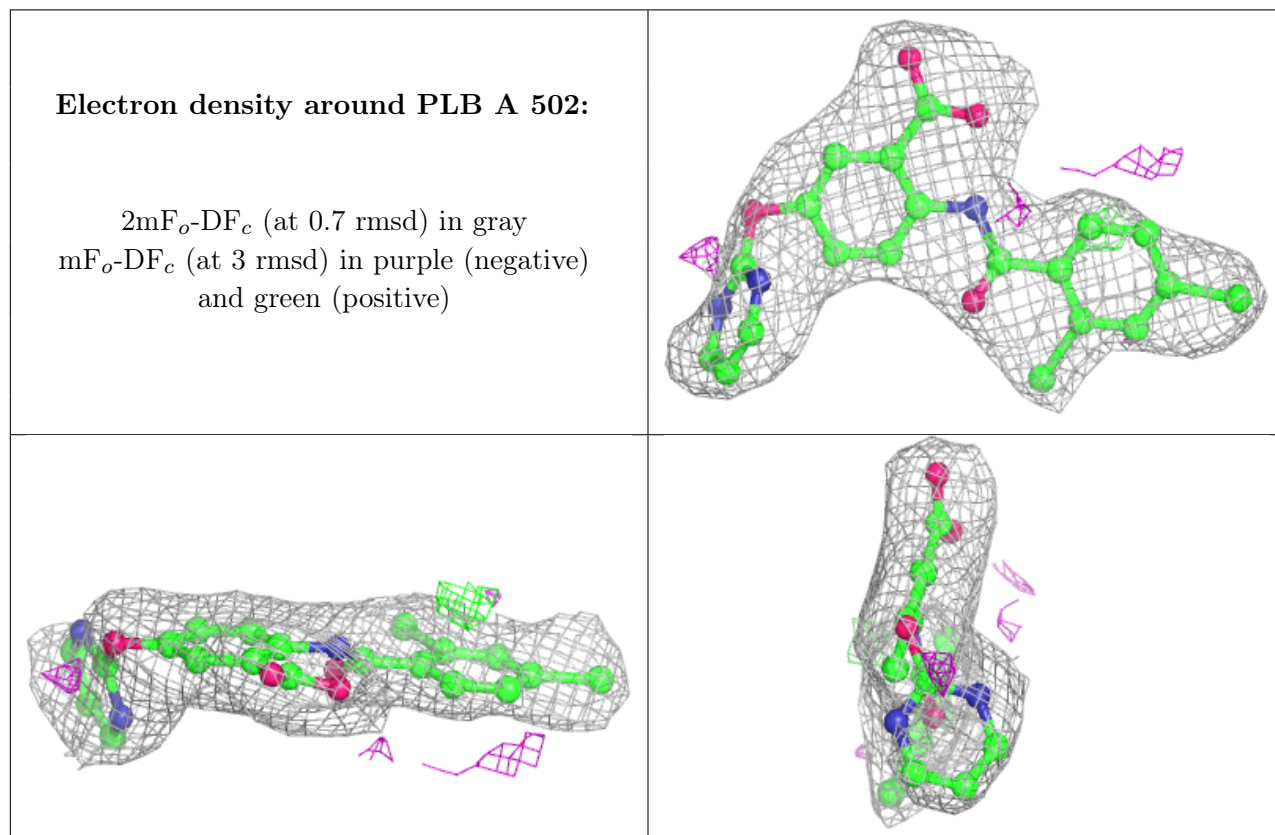
There are no monosaccharides in this entry.

6.4 Ligands [i](#)

In the following table, the Atoms column lists the number of modelled atoms in the group and the number defined in the chemical component dictionary. The B-factors column lists the minimum, median, 95th percentile and maximum values of B factors of atoms in the group. The column labelled 'Q< 0.9' lists the number of atoms with occupancy less than 0.9.

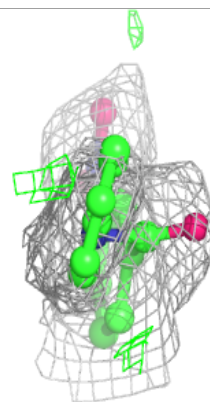
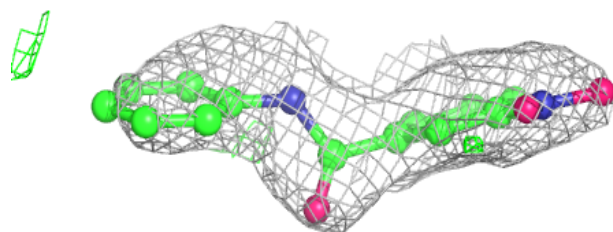
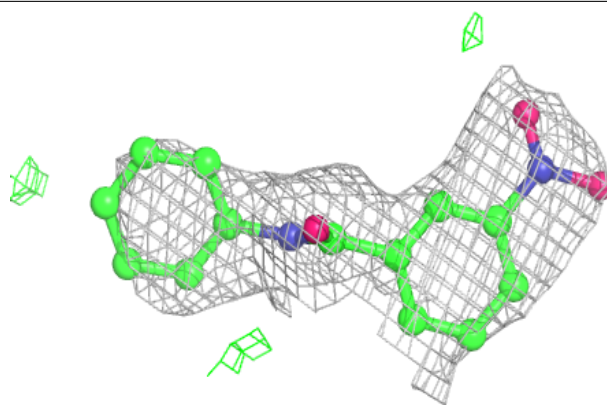
Mol	Type	Chain	Res	Atoms	RSCC	RSR	B-factors(Å ²)	Q<0.9
3	PLB	A	502	27/27	0.87	0.19	50,70,86,90	0
2	GW9	A	501	18/19	0.89	0.28	73,81,86,87	0
2	GW9	B	501	18/19	0.90	0.18	62,77,88,91	0
3	PLB	B	502	27/27	0.91	0.24	55,73,81,83	0

The following is a graphical depiction of the model fit to experimental electron density of all instances of the Ligand of Interest. In addition, ligands with molecular weight > 250 and outliers as shown on the geometry validation Tables will also be included. Each fit is shown from different orientation to approximate a three-dimensional view.

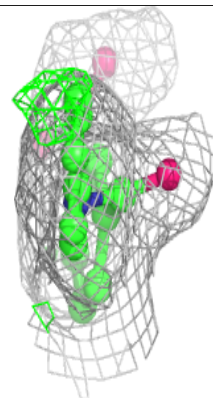
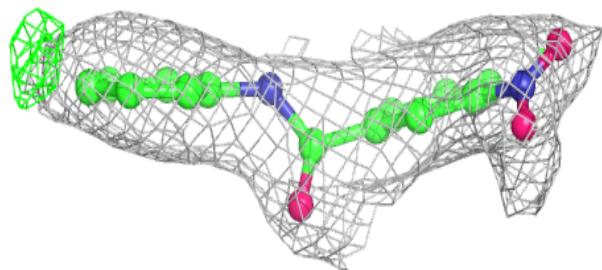
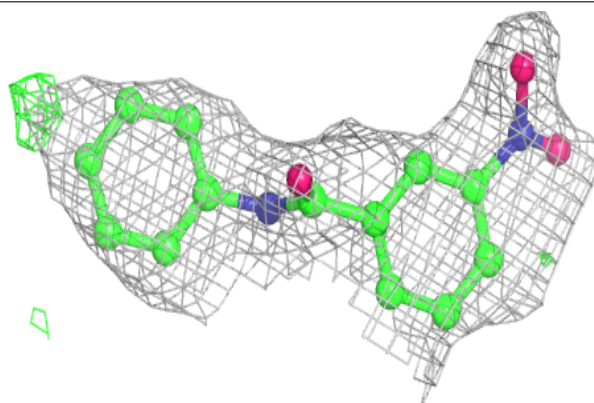


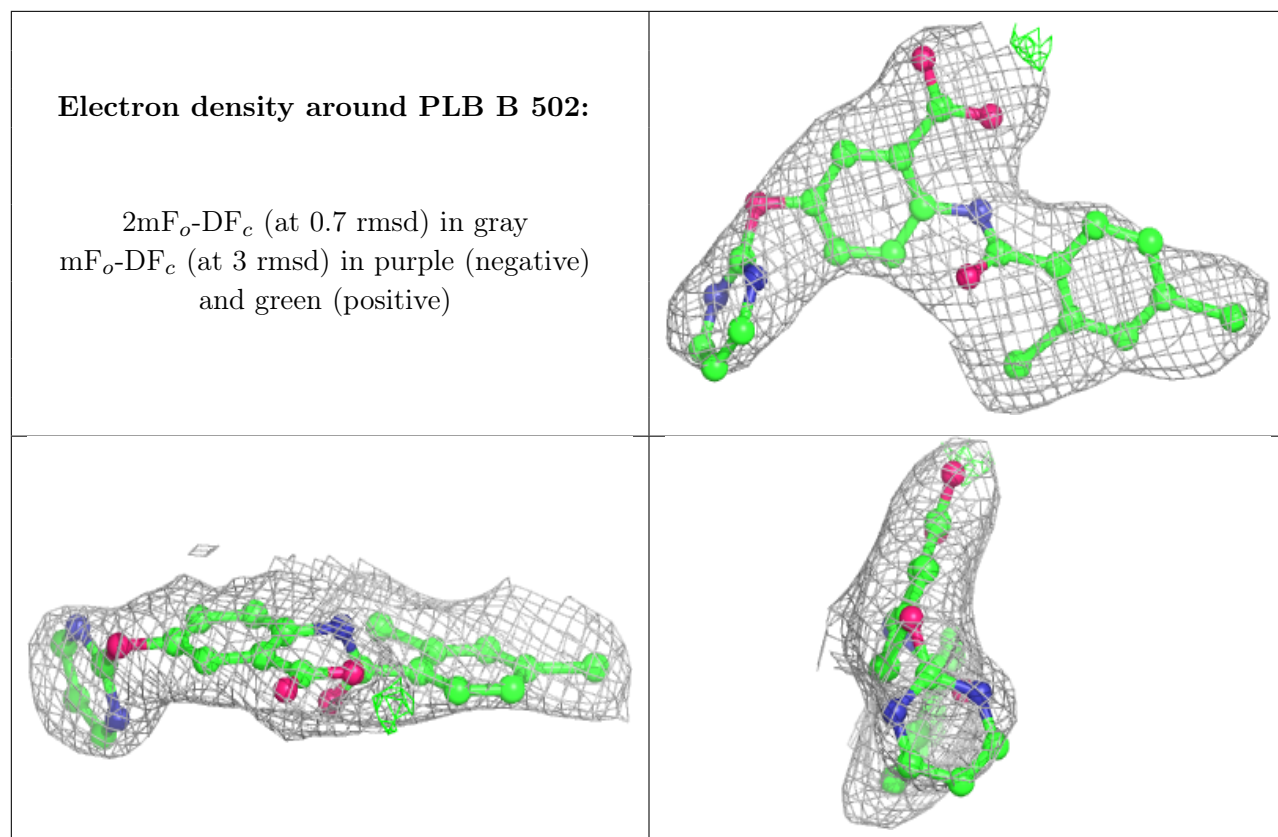
Electron density around GW9 A 501:

$2mF_o-DF_c$ (at 0.7 rmsd) in gray
 mF_o-DF_c (at 3 rmsd) in purple (negative)
and green (positive)

**Electron density around GW9 B 501:**

$2mF_o-DF_c$ (at 0.7 rmsd) in gray
 mF_o-DF_c (at 3 rmsd) in purple (negative)
and green (positive)





6.5 Other polymers [i](#)

There are no such residues in this entry.