



Full wwPDB X-ray Structure Validation Report ⓘ

Jul 31, 2024 – 02:10 PM JST

PDB ID : 8ZFO
Title : Crystal Structure of Human PPARgamma Ligand Binding Domain in Complex with GW9662 and nTZDpa
Authors : Shang, J.; Kojetin, D.J.
Deposited on : 2024-05-08
Resolution : 3.15 Å(reported)

This is a Full wwPDB X-ray Structure Validation Report for a publicly released PDB entry.

We welcome your comments at validation@mail.wwpdb.org

A user guide is available at

<https://www.wwpdb.org/validation/2017/XrayValidationReportHelp>

with specific help available everywhere you see the ⓘ symbol.

The types of validation reports are described at

<http://www.wwpdb.org/validation/2017/FAQs#types>.

The following versions of software and data (see [references ⓘ](#)) were used in the production of this report:

MolProbity : 4.02b-467
Mogul : 1.8.5 (274361), CSD as541be (2020)
Xtriage (Phenix) : 1.13
EDS : 2.37.1
buster-report : 1.1.7 (2018)
Percentile statistics : 20191225.v01 (using entries in the PDB archive December 25th 2019)
Refmac : 5.8.0158
CCP4 : 7.0.044 (Gargrove)
Ideal geometry (proteins) : Engh & Huber (2001)
Ideal geometry (DNA, RNA) : Parkinson et al. (1996)
Validation Pipeline (wwPDB-VP) : 2.37.1

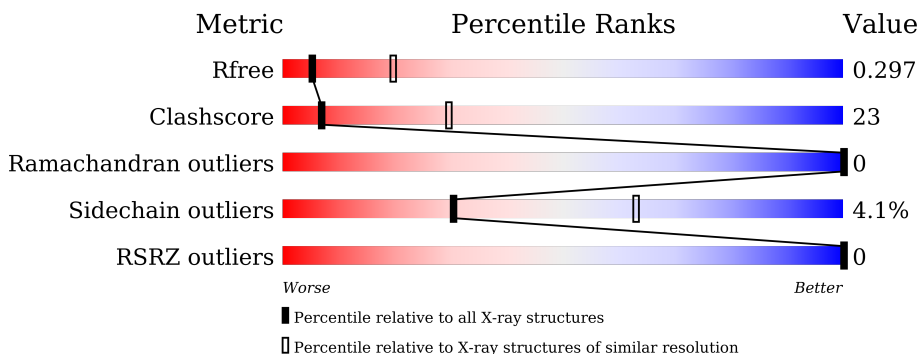
1 Overall quality at a glance

The following experimental techniques were used to determine the structure:

X-RAY DIFFRACTION

The reported resolution of this entry is 3.15 Å.

Percentile scores (ranging between 0-100) for global validation metrics of the entry are shown in the following graphic. The table shows the number of entries on which the scores are based.



Metric	Whole archive (#Entries)	Similar resolution (#Entries, resolution range(Å))
R_{free}	130704	1665 (3.20-3.12)
Clashscore	141614	1804 (3.20-3.12)
Ramachandran outliers	138981	1770 (3.20-3.12)
Sidechain outliers	138945	1769 (3.20-3.12)
RSRZ outliers	127900	1616 (3.20-3.12)

The table below summarises the geometric issues observed across the polymeric chains and their fit to the electron density. The red, orange, yellow and green segments of the lower bar indicate the fraction of residues that contain outliers for ≥ 3 , 2, 1 and 0 types of geometric quality criteria respectively. A grey segment represents the fraction of residues that are not modelled. The numeric value for each fraction is indicated below the corresponding segment, with a dot representing fractions $\leq 5\%$. The upper red bar (where present) indicates the fraction of residues that have poor fit to the electron density. The numeric value is given above the bar.

Mol	Chain	Length	Quality of chain
1	A	275	
1	B	275	

The following table lists non-polymeric compounds, carbohydrate monomers and non-standard residues in protein, DNA, RNA chains that are outliers for geometric or electron-density-fit criteria:

Mol	Type	Chain	Res	Chirality	Geometry	Clashes	Electron density
3	GW9	B	501	-	-	X	-

2 Entry composition i

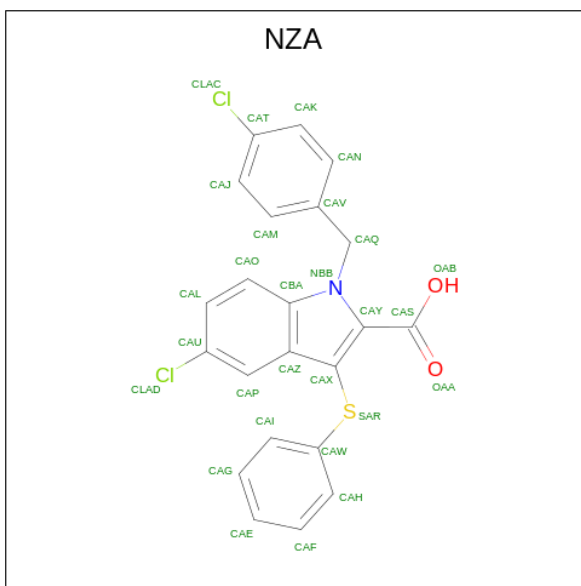
There are 4 unique types of molecules in this entry. The entry contains 3997 atoms, of which 0 are hydrogens and 0 are deuteriums.

In the tables below, the ZeroOcc column contains the number of atoms modelled with zero occupancy, the AltConf column contains the number of residues with at least one atom in alternate conformation and the Trace column contains the number of residues modelled with at most 2 atoms.

- Molecule 1 is a protein called Peroxisome proliferator-activated receptor gamma.

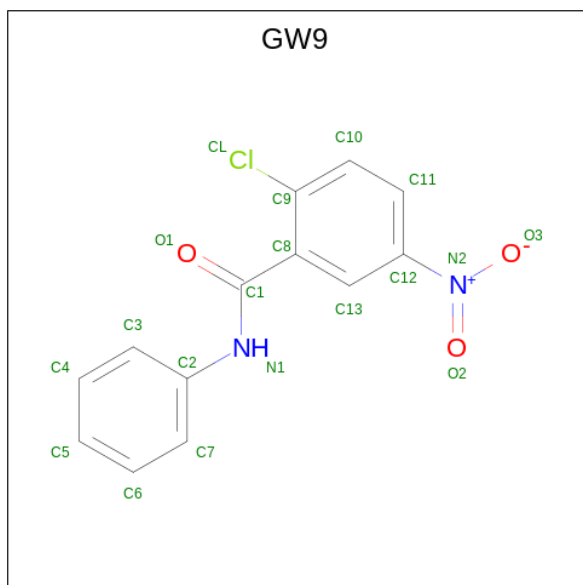
Mol	Chain	Residues	Atoms					ZeroOcc	AltConf	Trace
			Total	C	N	O	S			
1	A	250	Total 2003	C 1295	N 326	O 372	S 10	0	0	0
1	B	240	Total 1918	C 1241	N 312	O 356	S 9	0	0	0

- Molecule 2 is 5-CHLORO-1-(4-CHLOROBENZYL)-3-(PHENYLTHIO)-1H-INDOLE-2-CARBOXYLIC ACID (three-letter code: NZA) (formula: C₂₂H₁₅Cl₂NO₂S) (labeled as "Ligand of Interest" by depositor).



Mol	Chain	Residues	Atoms					ZeroOcc	AltConf	
			Total	C	Cl	N	O			S
2	A	1	Total 28	C 22	Cl 2	N 1	O 2	S 1	0	0
2	B	1	Total 28	C 22	Cl 2	N 1	O 2	S 1	0	0

- Molecule 3 is 2-chloro-5-nitro-N-phenylbenzamide (three-letter code: GW9) (formula: C₁₃H₉ClN₂O₃) (labeled as "Ligand of Interest" by depositor).



Mol	Chain	Residues	Atoms				ZeroOcc	AltConf
			Total	C	N	O		
3	B	1	18	13	2	3	0	0

- Molecule 4 is water.

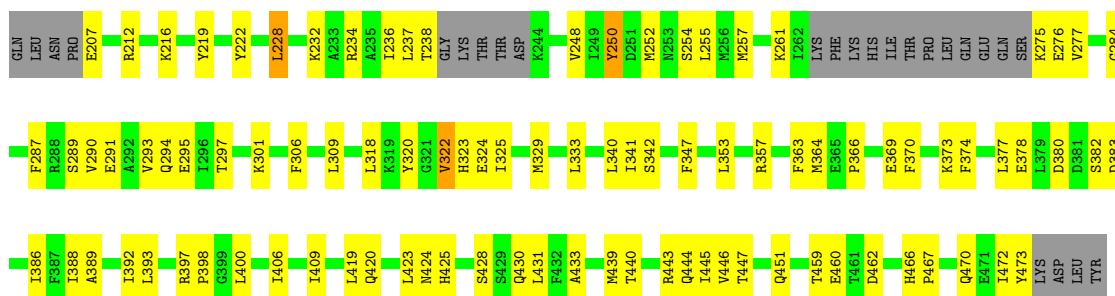
Mol	Chain	Residues	Atoms		ZeroOcc	AltConf
			Total	O		
4	B	2	2	2	0	0

3 Residue-property plots [i](#)

These plots are drawn for all protein, RNA, DNA and oligosaccharide chains in the entry. The first graphic for a chain summarises the proportions of the various outlier classes displayed in the second graphic. The second graphic shows the sequence view annotated by issues in geometry and electron density. Residues are color-coded according to the number of geometric quality criteria for which they contain at least one outlier: green = 0, yellow = 1, orange = 2 and red = 3 or more. A red dot above a residue indicates a poor fit to the electron density ($RSRZ > 2$). Stretches of 2 or more consecutive residues without any outlier are shown as a green connector. Residues present in the sample, but not in the model, are shown in grey.

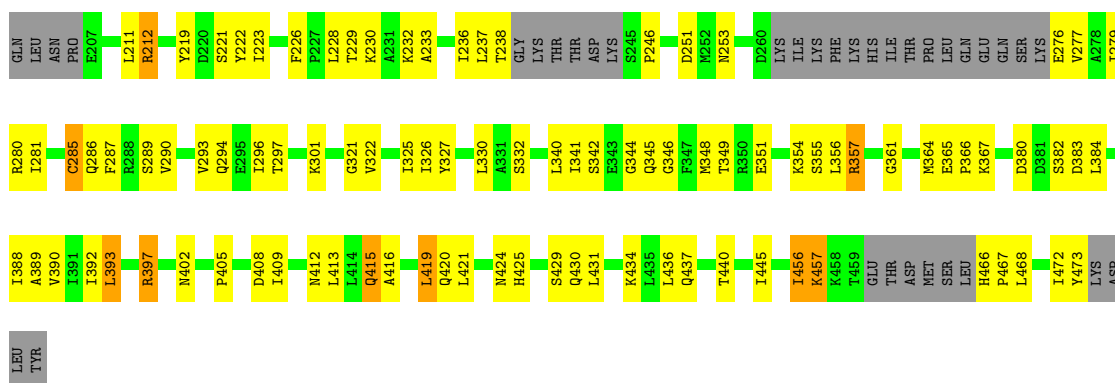
- Molecule 1: Peroxisome proliferator-activated receptor gamma

Chain A: 



- Molecule 1: Peroxisome proliferator-activated receptor gamma

Chain B: 



4 Data and refinement statistics

Property	Value	Source
Space group	C 1 2 1	Depositor
Cell constants a, b, c, α , β , γ	92.75Å 62.22Å 119.08Å 90.00° 102.19° 90.00°	Depositor
Resolution (Å)	49.16 – 3.15 49.16 – 3.15	Depositor EDS
% Data completeness (in resolution range)	99.6 (49.16-3.15) 99.6 (49.16-3.15)	Depositor EDS
R_{merge}	(Not available)	Depositor
R_{sym}	(Not available)	Depositor
$\langle I/\sigma(I) \rangle$ ¹	3.49 (at 3.12Å)	Xtrriage
Refinement program	PHENIX 1.11.1_2575	Depositor
R, R_{free}	0.212 , 0.296 0.215 , 0.297	Depositor DCC
R_{free} test set	1162 reflections (9.99%)	wwPDB-VP
Wilson B-factor (Å ²)	70.4	Xtrriage
Anisotropy	0.498	Xtrriage
Bulk solvent k_{sol} (e/Å ³), B_{sol} (Å ²)	0.31 , 46.2	EDS
L-test for twinning ²	$\langle L \rangle = 0.50$, $\langle L^2 \rangle = 0.33$	Xtrriage
Estimated twinning fraction	No twinning to report.	Xtrriage
F_o, F_c correlation	0.92	EDS
Total number of atoms	3997	wwPDB-VP
Average B, all atoms (Å ²)	58.0	wwPDB-VP

Xtrriage's analysis on translational NCS is as follows: *The largest off-origin peak in the Patterson function is 6.28% of the height of the origin peak. No significant pseudotranslation is detected.*

¹Intensities estimated from amplitudes.

²Theoretical values of $\langle |L| \rangle$, $\langle L^2 \rangle$ for acentric reflections are 0.5, 0.333 respectively for untwinned datasets, and 0.375, 0.2 for perfectly twinned datasets.

5 Model quality

5.1 Standard geometry

Bond lengths and bond angles in the following residue types are not validated in this section: NZA, GW9

The Z score for a bond length (or angle) is the number of standard deviations the observed value is removed from the expected value. A bond length (or angle) with $|Z| > 5$ is considered an outlier worth inspection. RMSZ is the root-mean-square of all Z scores of the bond lengths (or angles).

Mol	Chain	Bond lengths		Bond angles	
		RMSZ	# Z >5	RMSZ	# Z >5
1	A	0.57	0/2035	0.74	0/2740
1	B	0.59	0/1949	0.78	0/2627
All	All	0.58	0/3984	0.76	0/5367

There are no bond length outliers.

There are no bond angle outliers.

There are no chirality outliers.

There are no planarity outliers.

5.2 Too-close contacts

In the following table, the Non-H and H(model) columns list the number of non-hydrogen atoms and hydrogen atoms in the chain respectively. The H(added) column lists the number of hydrogen atoms added and optimized by MolProbity. The Clashes column lists the number of clashes within the asymmetric unit, whereas Symm-Clashes lists symmetry-related clashes.

Mol	Chain	Non-H	H(model)	H(added)	Clashes	Symm-Clashes
1	A	2003	0	2063	82	0
1	B	1918	0	1959	104	0
2	A	28	0	14	4	0
2	B	28	0	14	6	0
3	B	18	0	9	9	0
4	B	2	0	0	1	0
All	All	3997	0	4059	185	0

The all-atom clashscore is defined as the number of clashes found per 1000 atoms (including hydrogen atoms). The all-atom clashscore for this structure is 23.

All (185) close contacts within the same asymmetric unit are listed below, sorted by their clash

magnitude.

Atom-1	Atom-2	Interatomic distance (Å)	Clash overlap (Å)
1:B:285:CYS:SG	3:B:501:GW9:C9	2.10	1.40
1:B:286:GLN:HG3	3:B:501:GW9:C4	1.60	1.31
1:B:212:ARG:HH11	1:B:212:ARG:HG2	1.23	1.00
1:B:286:GLN:HG3	3:B:501:GW9:H4	1.48	0.93
1:B:364:MET:SD	1:B:367:LYS:HD2	2.11	0.90
1:A:212:ARG:HD3	1:A:419:LEU:HD23	1.59	0.83
1:B:286:GLN:CG	3:B:501:GW9:C4	2.53	0.82
1:B:327:TYR:HE2	1:B:367:LYS:HE2	1.45	0.81
1:B:286:GLN:HG3	3:B:501:GW9:C3	2.12	0.79
1:B:349:THR:HG22	1:B:351:GLU:H	1.48	0.79
1:B:327:TYR:CE2	1:B:367:LYS:HE2	2.19	0.76
1:B:281:ILE:HA	2:B:502:NZA:HAF	1.68	0.75
1:B:466:HIS:N	1:B:467:PRO:CD	2.50	0.75
1:A:276:GLU:HB3	1:A:357:ARG:HH21	1.51	0.73
1:A:287:PHE:O	1:A:290:VAL:HG12	1.89	0.73
1:B:285:CYS:SG	3:B:501:GW9:C8	2.77	0.71
1:B:212:ARG:NH2	1:B:420:GLN:OE1	2.24	0.71
1:B:388:ILE:HD12	1:B:389:ALA:N	2.06	0.70
1:A:276:GLU:CB	1:A:357:ARG:HH21	2.04	0.70
1:B:212:ARG:HH11	1:B:212:ARG:CG	2.01	0.70
1:A:254:SER:HA	1:A:257:MET:HG2	1.73	0.70
1:B:286:GLN:CG	3:B:501:GW9:H4	2.22	0.68
1:B:384:LEU:O	1:B:388:ILE:HG13	1.93	0.68
1:B:290:VAL:HG21	1:B:473:TYR:CD2	2.28	0.68
1:A:291:GLU:O	1:A:295:GLU:HG3	1.93	0.68
1:B:364:MET:SD	1:B:367:LYS:NZ	2.60	0.67
1:A:276:GLU:HG3	1:A:277:VAL:N	2.09	0.67
1:A:325:ILE:HD12	1:A:388:ILE:HG23	1.77	0.67
1:B:364:MET:SD	1:B:367:LYS:CD	2.81	0.67
1:A:380:ASP:HB2	1:A:383:ASP:OD2	1.95	0.66
1:A:324:GLU:OE2	1:A:397:ARG:NH2	2.29	0.66
1:A:276:GLU:HG3	1:A:277:VAL:H	1.61	0.66
1:B:212:ARG:HH12	1:B:419:LEU:HD23	1.62	0.65
1:B:364:MET:CE	2:B:502:NZA:HAL	2.26	0.65
1:B:349:THR:HG22	1:B:351:GLU:N	2.11	0.65
1:B:277:VAL:HG22	1:B:280:ARG:HH21	1.62	0.64
1:A:219:TYR:HD1	1:A:382:SER:HA	1.62	0.64
1:B:364:MET:HE2	2:B:502:NZA:HAL	1.80	0.64
1:A:318:LEU:O	1:A:322:VAL:HG12	1.98	0.64
1:A:383:ASP:OD2	1:A:425:HIS:NE2	2.32	0.62
1:B:393:LEU:CD1	1:B:413:LEU:HD11	2.30	0.62

Continued on next page...

Continued from previous page...

Atom-1	Atom-2	Interatomic distance (Å)	Clash overlap (Å)
1:B:340:LEU:HD22	1:B:344:GLY:HA2	1.82	0.62
1:B:293:VAL:HG22	1:B:322:VAL:HG21	1.81	0.62
1:A:237:LEU:HG	1:A:340:LEU:HD21	1.83	0.61
1:A:341:ILE:HG23	2:A:501:NZA:CAY	2.31	0.61
1:A:276:GLU:CB	1:A:357:ARG:NH2	2.64	0.61
1:B:456:ILE:O	1:B:456:ILE:HG23	2.01	0.60
1:B:383:ASP:OD2	1:B:425:HIS:NE2	2.26	0.60
1:B:430:GLN:O	1:B:434:LYS:HE2	2.02	0.60
1:A:248:VAL:HG22	1:A:347:PHE:HB3	1.83	0.60
1:A:419:LEU:HG	1:A:423:LEU:HD13	1.83	0.59
1:A:440:THR:O	1:A:444:GLN:HG3	2.04	0.58
1:A:250:TYR:CD2	1:A:250:TYR:N	2.72	0.58
1:B:237:LEU:O	1:B:238:THR:HG23	2.03	0.58
1:B:388:ILE:HD12	1:B:389:ALA:H	1.66	0.58
1:A:325:ILE:HG23	1:A:388:ILE:HD12	1.84	0.58
1:B:212:ARG:HG2	1:B:212:ARG:NH1	1.98	0.58
1:B:421:LEU:HD13	1:B:431:LEU:HG	1.85	0.57
1:A:212:ARG:O	1:A:216:LYS:HG2	2.04	0.57
1:A:366:PRO:HA	1:A:369:GLU:HG3	1.86	0.57
1:B:286:GLN:NE2	1:B:473:TYR:CD1	2.73	0.56
1:B:233:ALA:O	1:B:237:LEU:HG	2.05	0.56
1:B:405:PRO:HA	1:B:408:ASP:HB2	1.87	0.56
1:B:212:ARG:NH1	1:B:419:LEU:HD23	2.20	0.56
1:B:211:LEU:HD11	1:B:415:GLN:HB3	1.88	0.55
1:B:290:VAL:HG21	1:B:473:TYR:HD2	1.70	0.55
1:A:393:LEU:HD13	1:A:409:ILE:HG21	1.87	0.55
2:B:502:NZA:CBA	2:B:502:NZA:HAN	2.36	0.55
1:A:276:GLU:HG2	1:A:357:ARG:NH2	2.21	0.55
1:A:293:VAL:HG22	1:A:322:VAL:HG21	1.88	0.55
1:B:297:THR:O	1:B:301:LYS:HG2	2.06	0.55
1:B:251:ASP:HB3	1:B:253:ASN:H	1.72	0.55
1:B:466:HIS:N	1:B:467:PRO:HD2	2.21	0.55
1:B:232:LYS:O	1:B:236:ILE:HG13	2.08	0.54
1:A:433:ALA:HA	1:B:436:LEU:HD13	1.91	0.53
1:B:357:ARG:O	1:B:361:GLY:N	2.41	0.53
1:B:322:VAL:O	1:B:326:ILE:HG13	2.09	0.53
1:B:393:LEU:CD1	1:B:413:LEU:CD1	2.87	0.53
1:B:351:GLU:OE1	1:B:354:LYS:HE2	2.09	0.53
1:A:320:TYR:HB2	1:A:397:ARG:HD2	1.91	0.52
1:A:275:LYS:NZ	1:A:462:ASP:OD2	2.34	0.52
1:A:276:GLU:CG	1:A:277:VAL:H	2.22	0.52

Continued on next page...

Continued from previous page...

Atom-1	Atom-2	Interatomic distance (Å)	Clash overlap (Å)
1:B:393:LEU:HD13	1:B:413:LEU:HD11	1.92	0.52
1:B:286:GLN:OE1	3:B:501:GW9:H4	2.10	0.52
1:B:230:LYS:HG3	1:B:332:SER:HB3	1.91	0.52
1:A:424:ASN:HB3	1:A:425:HIS:HD2	1.75	0.51
1:A:257:MET:O	1:A:261:LYS:HG2	2.10	0.51
1:B:276:GLU:HB3	1:B:279:ILE:HG22	1.92	0.51
1:A:428:SER:HB3	1:A:431:LEU:HB2	1.93	0.51
2:A:501:NZA:OAA	2:A:501:NZA:HAQ1	2.10	0.50
1:B:327:TYR:HA	1:B:330:LEU:HB2	1.92	0.50
1:B:356:LEU:HB2	1:B:361:GLY:HA2	1.94	0.50
1:A:289:SER:O	1:A:293:VAL:HG23	2.11	0.50
1:A:353:LEU:HD23	1:A:364:MET:HB2	1.93	0.50
1:B:409:ILE:O	1:B:412:ASN:N	2.45	0.50
1:A:232:LYS:O	1:A:236:ILE:HG22	2.11	0.49
1:B:321:GLY:O	1:B:325:ILE:HD12	2.11	0.49
1:A:325:ILE:HD13	1:A:388:ILE:HD12	1.94	0.49
1:A:276:GLU:CG	1:A:277:VAL:N	2.76	0.49
1:B:211:LEU:HB3	1:B:419:LEU:HD22	1.94	0.49
1:A:257:MET:N	1:A:257:MET:SD	2.86	0.48
1:A:440:THR:HG22	1:B:440:THR:HA	1.95	0.48
1:A:419:LEU:O	1:A:423:LEU:HD13	2.13	0.48
1:B:212:ARG:NH1	1:B:212:ARG:HA	2.29	0.48
1:A:439:MET:HE1	1:B:437:GLN:HG2	1.94	0.47
1:A:325:ILE:CD1	1:A:388:ILE:HG23	2.43	0.47
1:A:293:VAL:HG11	1:A:472:ILE:HD11	1.95	0.47
1:B:393:LEU:HD13	1:B:413:LEU:CD1	2.45	0.47
2:A:501:NZA:HAN	2:A:501:NZA:CBA	2.44	0.47
1:A:212:ARG:NH1	1:A:420:GLN:OE1	2.38	0.47
1:B:226:PHE:HZ	1:B:296:ILE:HD13	1.79	0.47
1:A:370:PHE:CE2	1:A:374:PHE:HB2	2.49	0.47
1:B:219:TYR:CZ	1:B:223:ILE:HD11	2.49	0.47
1:B:285:CYS:SG	3:B:501:GW9:C1	3.03	0.47
1:B:229:THR:OG1	1:B:232:LYS:HG2	2.15	0.46
1:A:369:GLU:O	1:A:373:LYS:HG2	2.15	0.46
1:A:392:ILE:HG13	1:A:393:LEU:N	2.30	0.46
1:B:289:SER:O	1:B:293:VAL:HG23	2.16	0.46
1:B:236:ILE:HG23	1:B:246:PRO:HG3	1.98	0.46
1:A:293:VAL:HG22	1:A:322:VAL:CG2	2.45	0.46
1:B:342:SER:O	1:B:345:GLN:HG2	2.16	0.45
1:B:219:TYR:OH	1:B:223:ILE:HD11	2.16	0.45
1:A:234:ARG:O	1:A:238:THR:HG23	2.15	0.45

Continued on next page...

Continued from previous page...

Atom-1	Atom-2	Interatomic distance (Å)	Clash overlap (Å)
1:A:393:LEU:HD23	1:A:406:ILE:HG23	1.98	0.45
1:B:211:LEU:HD12	1:B:416:ALA:HA	1.98	0.45
1:A:386:ILE:O	1:A:389:ALA:HB3	2.17	0.45
1:A:363:PHE:CE1	1:A:364:MET:HG3	2.52	0.45
1:A:306:PHE:HA	1:A:309:LEU:HD12	1.99	0.44
1:B:228:LEU:HD12	1:B:232:LYS:HG3	1.99	0.44
1:A:212:ARG:HD3	1:A:419:LEU:CD2	2.40	0.44
1:A:341:ILE:HG22	1:A:342:SER:N	2.33	0.44
1:A:324:GLU:OE1	1:A:443:ARG:HG2	2.17	0.44
1:B:290:VAL:HG21	1:B:473:TYR:CE2	2.52	0.44
1:B:392:ILE:O	4:B:601:HOH:O	2.21	0.44
1:A:212:ARG:HA	1:A:212:ARG:HD2	1.60	0.44
1:B:402:ASN:O	1:B:405:PRO:HD2	2.17	0.44
1:B:457:LYS:HB3	1:B:457:LYS:HE2	1.72	0.44
1:A:377:LEU:O	1:A:378:GLU:HG2	2.17	0.44
1:A:320:TYR:HB2	1:A:397:ARG:CD	2.48	0.44
1:A:430:GLN:HE21	1:B:415:GLN:HG3	1.83	0.44
1:B:211:LEU:HD12	1:B:416:ALA:CA	2.48	0.44
1:A:219:TYR:O	1:A:222:TYR:HB3	2.18	0.43
1:A:393:LEU:HD13	1:A:409:ILE:CG2	2.48	0.43
1:A:447:THR:O	1:A:451:GLN:HG2	2.18	0.43
1:B:276:GLU:HG3	1:B:277:VAL:N	2.33	0.43
1:A:284:GLY:HA3	2:A:501:NZA:SAR	2.59	0.43
1:A:428:SER:HB2	1:A:431:LEU:HD22	1.99	0.43
1:B:420:GLN:NE2	1:B:424:ASN:HB2	2.34	0.43
1:B:237:LEU:O	1:B:238:THR:CG2	2.67	0.43
1:B:237:LEU:HD21	1:B:340:LEU:HG	2.00	0.43
1:B:355:SER:O	1:B:355:SER:OG	2.27	0.43
1:A:428:SER:CB	1:A:431:LEU:HD22	2.49	0.43
1:A:370:PHE:CB	1:A:445:ILE:HD11	2.50	0.42
1:B:326:ILE:HG23	2:B:502:NZA:CLAC	2.56	0.42
1:A:466:HIS:ND1	1:A:467:PRO:HD2	2.34	0.42
1:A:291:GLU:HA	1:A:294:GLN:OE1	2.19	0.42
1:B:279:ILE:HG23	1:B:280:ARG:N	2.33	0.42
1:B:281:ILE:HA	2:B:502:NZA:CAF	2.46	0.42
1:B:293:VAL:HG22	1:B:322:VAL:CG2	2.47	0.42
1:B:468:LEU:O	1:B:472:ILE:HG13	2.20	0.42
1:B:390:VAL:HG22	1:B:413:LEU:HB2	2.02	0.42
1:A:252:MET:O	1:A:255:LEU:HB3	2.20	0.41
1:A:363:PHE:CD1	1:A:364:MET:HG3	2.55	0.41
1:B:321:GLY:HA2	1:B:397:ARG:NH2	2.35	0.41

Continued on next page...

Continued from previous page...

Atom-1	Atom-2	Interatomic distance (Å)	Clash overlap (Å)
1:B:380:ASP:OD1	1:B:382:SER:HB3	2.20	0.41
1:B:466:HIS:N	1:B:467:PRO:HD3	2.30	0.41
1:B:212:ARG:NH1	1:B:419:LEU:CD2	2.83	0.41
1:B:365:GLU:N	1:B:366:PRO:HD2	2.34	0.41
1:A:276:GLU:CG	1:A:357:ARG:NH2	2.84	0.41
1:A:400:LEU:HD13	1:A:406:ILE:HD12	2.02	0.41
1:A:459:THR:HG22	1:A:460:GLU:HG2	2.02	0.41
1:A:323:HIS:NE2	1:A:473:TYR:CE2	2.89	0.41
1:B:219:TYR:O	1:B:222:TYR:HB3	2.21	0.41
1:A:228:LEU:HD13	1:A:333:LEU:HD22	2.02	0.41
1:A:297:THR:O	1:A:301:LYS:HG3	2.21	0.41
1:A:397:ARG:HA	1:A:398:PRO:HD3	1.86	0.41
1:B:340:LEU:HD23	1:B:346:GLY:O	2.21	0.41
1:B:437:GLN:O	1:B:440:THR:HB	2.21	0.41
1:A:323:HIS:HB3	1:A:446:VAL:HG22	2.03	0.40
1:B:287:PHE:C	1:B:287:PHE:CD1	2.95	0.40
1:B:341:ILE:CD1	1:B:348:MET:HB2	2.51	0.40
1:B:237:LEU:C	1:B:238:THR:HG23	2.40	0.40
1:B:341:ILE:HD11	1:B:348:MET:HB2	2.04	0.40
1:B:367:LYS:HG2	1:B:445:ILE:HD11	2.03	0.40
1:A:392:ILE:HG13	1:A:393:LEU:H	1.85	0.40

There are no symmetry-related clashes.

5.3 Torsion angles [i](#)

5.3.1 Protein backbone [i](#)

In the following table, the Percentiles column shows the percent Ramachandran outliers of the chain as a percentile score with respect to all X-ray entries followed by that with respect to entries of similar resolution.

The Analysed column shows the number of residues for which the backbone conformation was analysed, and the total number of residues.

Mol	Chain	Analysed	Favoured	Allowed	Outliers	Percentiles	
1	A	244/275 (89%)	231 (95%)	13 (5%)	0	100	100
1	B	232/275 (84%)	218 (94%)	14 (6%)	0	100	100
All	All	476/550 (86%)	449 (94%)	27 (6%)	0	100	100

There are no Ramachandran outliers to report.

5.3.2 Protein sidechains [i](#)

In the following table, the Percentiles column shows the percent sidechain outliers of the chain as a percentile score with respect to all X-ray entries followed by that with respect to entries of similar resolution.

The Analysed column shows the number of residues for which the sidechain conformation was analysed, and the total number of residues.

Mol	Chain	Analysed	Rotameric	Outliers	Percentiles	
1	A	224/248 (90%)	218 (97%)	6 (3%)	44	73
1	B	213/248 (86%)	201 (94%)	12 (6%)	21	53
All	All	437/496 (88%)	419 (96%)	18 (4%)	30	63

All (18) residues with a non-rotameric sidechain are listed below:

Mol	Chain	Res	Type
1	A	207	GLU
1	A	228	LEU
1	A	250	TYR
1	A	322	VAL
1	A	329	MET
1	A	470	GLN
1	B	212	ARG
1	B	221	SER
1	B	285	CYS
1	B	294	GLN
1	B	357	ARG
1	B	393	LEU
1	B	397	ARG
1	B	415	GLN
1	B	419	LEU
1	B	429	SER
1	B	456	ILE
1	B	457	LYS

Sometimes sidechains can be flipped to improve hydrogen bonding and reduce clashes. There are no such sidechains identified.

5.3.3 RNA [i](#)

There are no RNA molecules in this entry.

5.4 Non-standard residues in protein, DNA, RNA chains [i](#)

There are no non-standard protein/DNA/RNA residues in this entry.

5.5 Carbohydrates [i](#)

There are no monosaccharides in this entry.

5.6 Ligand geometry [i](#)

3 ligands are modelled in this entry.

In the following table, the Counts columns list the number of bonds (or angles) for which Mogul statistics could be retrieved, the number of bonds (or angles) that are observed in the model and the number of bonds (or angles) that are defined in the Chemical Component Dictionary. The Link column lists molecule types, if any, to which the group is linked. The Z score for a bond length (or angle) is the number of standard deviations the observed value is removed from the expected value. A bond length (or angle) with $|Z| > 2$ is considered an outlier worth inspection. RMSZ is the root-mean-square of all Z scores of the bond lengths (or angles).

Mol	Type	Chain	Res	Link	Bond lengths			Bond angles		
					Counts	RMSZ	# Z > 2	Counts	RMSZ	# Z > 2
2	NZA	A	501	-	27,31,31	1.31	3 (11%)	34,44,44	1.73	7 (20%)
2	NZA	B	502	-	27,31,31	1.09	3 (11%)	34,44,44	2.18	8 (23%)
3	GW9	B	501	-	18,19,20	1.41	4 (22%)	23,25,27	3.99	8 (34%)

In the following table, the Chirals column lists the number of chiral outliers, the number of chiral centers analysed, the number of these observed in the model and the number defined in the Chemical Component Dictionary. Similar counts are reported in the Torsion and Rings columns. '-' means no outliers of that kind were identified.

Mol	Type	Chain	Res	Link	Chirals	Torsions	Rings
2	NZA	A	501	-	-	2/12/12/12	0/4/4/4
2	NZA	B	502	-	-	6/12/12/12	0/4/4/4
3	GW9	B	501	-	-	3/10/12/12	0/2/2/2

All (10) bond length outliers are listed below:

Mol	Chain	Res	Type	Atoms	Z	Observed(Å)	Ideal(Å)
3	B	501	GW9	C1-N1	3.62	1.45	1.35
2	A	501	NZA	CAW-SAR	3.13	1.84	1.77
2	A	501	NZA	CAY-CAS	2.67	1.54	1.48
2	B	502	NZA	CAY-CAS	2.61	1.54	1.48
3	B	501	GW9	O1-C1	-2.43	1.18	1.23
2	B	502	NZA	CAW-SAR	2.41	1.82	1.77
3	B	501	GW9	C13-C8	-2.31	1.36	1.39
2	B	502	NZA	CAQ-NBB	-2.27	1.44	1.48
3	B	501	GW9	O2-N2	-2.20	1.19	1.22
2	A	501	NZA	CAU-CLAD	2.04	1.79	1.74

All (23) bond angle outliers are listed below:

Mol	Chain	Res	Type	Atoms	Z	Observed(°)	Ideal(°)
3	B	501	GW9	C11-C12-N2	14.16	130.03	119.38
3	B	501	GW9	C13-C12-N2	-8.50	111.25	118.75
2	A	501	NZA	CAW-SAR-CAX	7.10	119.01	101.93
2	B	502	NZA	CAW-SAR-CAX	5.98	116.30	101.93
2	B	502	NZA	CAV-CAQ-NBB	-5.41	104.22	112.63
2	B	502	NZA	CAY-CAX-SAR	-5.14	121.02	126.77
3	B	501	GW9	C8-C1-N1	-4.90	105.15	115.92
3	B	501	GW9	C13-C8-C1	-3.88	107.58	120.44
2	B	502	NZA	CAX-CAZ-CBA	-3.68	104.12	114.39
3	B	501	GW9	C9-C8-C1	3.42	131.68	120.62
3	B	501	GW9	C2-N1-C1	3.41	135.43	126.58
2	B	502	NZA	CAN-CAK-CAT	-3.41	115.64	119.24
3	B	501	GW9	O1-C1-C8	3.34	126.89	120.94
2	B	502	NZA	CAJ-CAT-CLAC	-3.28	114.23	119.35
2	A	501	NZA	CAX-CAZ-CBA	-3.09	105.76	114.39
2	B	502	NZA	CAK-CAT-CAJ	3.02	125.15	121.24
2	A	501	NZA	CAY-CAX-SAR	2.94	130.07	126.77
2	A	501	NZA	OAB-CAS-CAY	2.56	121.68	116.40
2	A	501	NZA	OAB-CAS-OAA	-2.33	118.18	123.35
2	A	501	NZA	CAJ-CAM-CAV	-2.18	118.03	121.03
3	B	501	GW9	C8-C13-C12	2.14	122.29	119.87
2	A	501	NZA	CAN-CAV-CAM	2.07	121.42	118.17
2	B	502	NZA	OAB-CAS-OAA	-2.04	118.81	123.35

There are no chirality outliers.

All (11) torsion outliers are listed below:

Mol	Chain	Res	Type	Atoms
2	B	502	NZA	OAB-CAS-CAY-NBB

Continued on next page...

Continued from previous page...

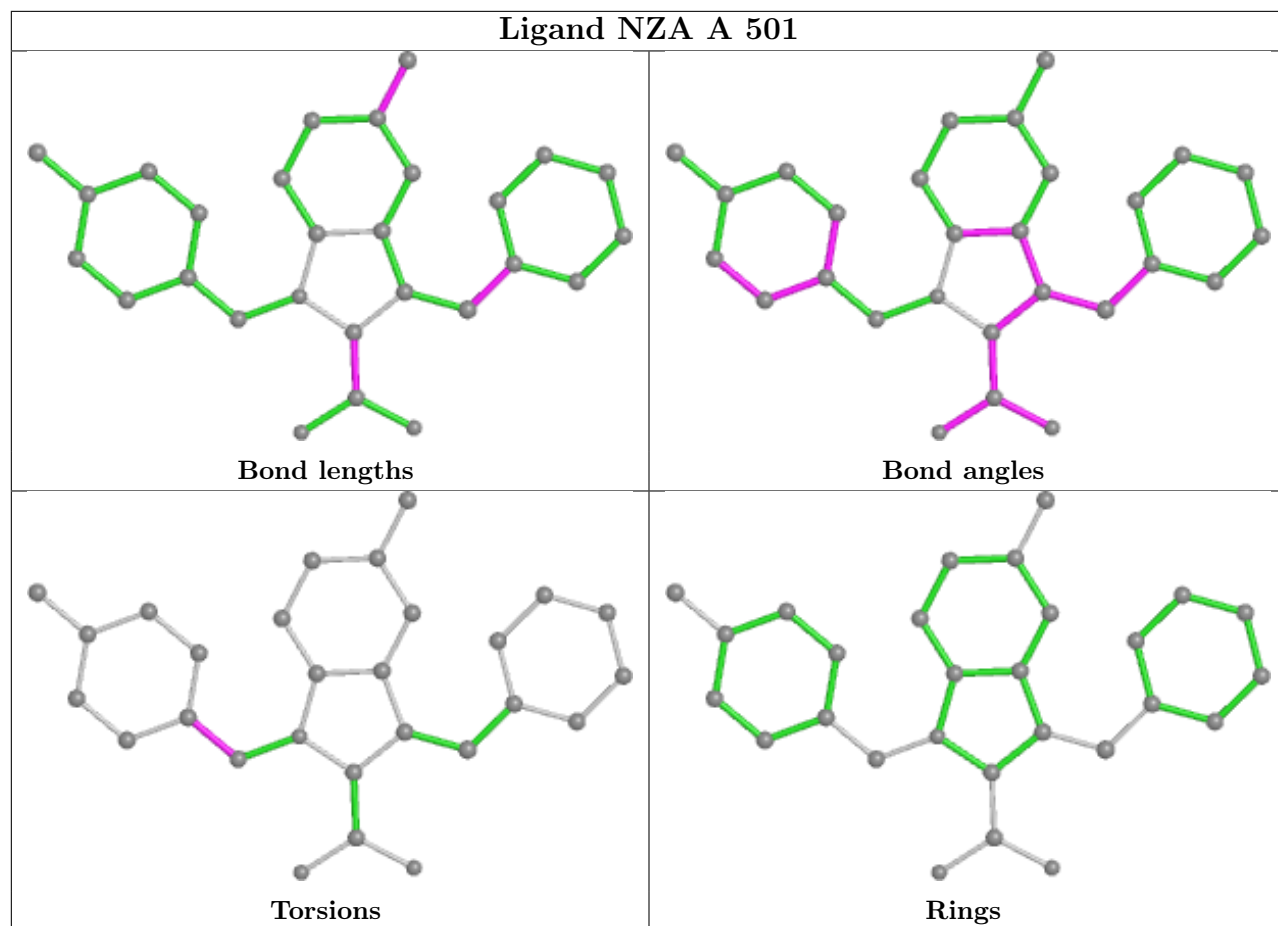
Mol	Chain	Res	Type	Atoms
2	A	501	NZA	NBB-CAQ-CAV-CAN
2	A	501	NZA	NBB-CAQ-CAV-CAM
3	B	501	GW9	O1-C1-C8-C9
2	B	502	NZA	OAA-CAS-CAY-NBB
2	B	502	NZA	CAZ-CAX-SAR-CAW
2	B	502	NZA	NBB-CAQ-CAV-CAM
2	B	502	NZA	NBB-CAQ-CAV-CAN
3	B	501	GW9	N1-C1-C8-C9
2	B	502	NZA	OAB-CAS-CAY-CAX
3	B	501	GW9	C3-C2-N1-C1

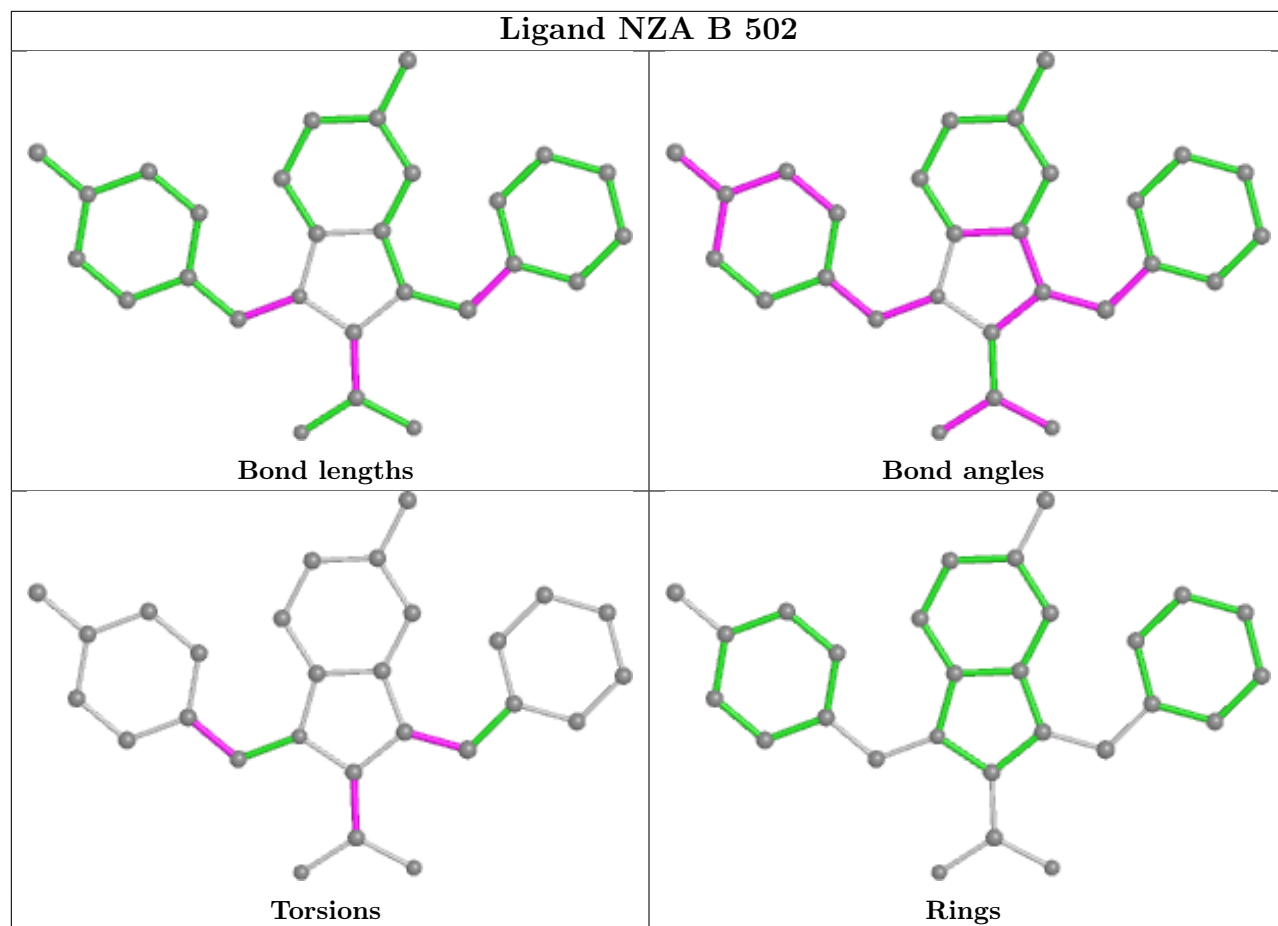
There are no ring outliers.

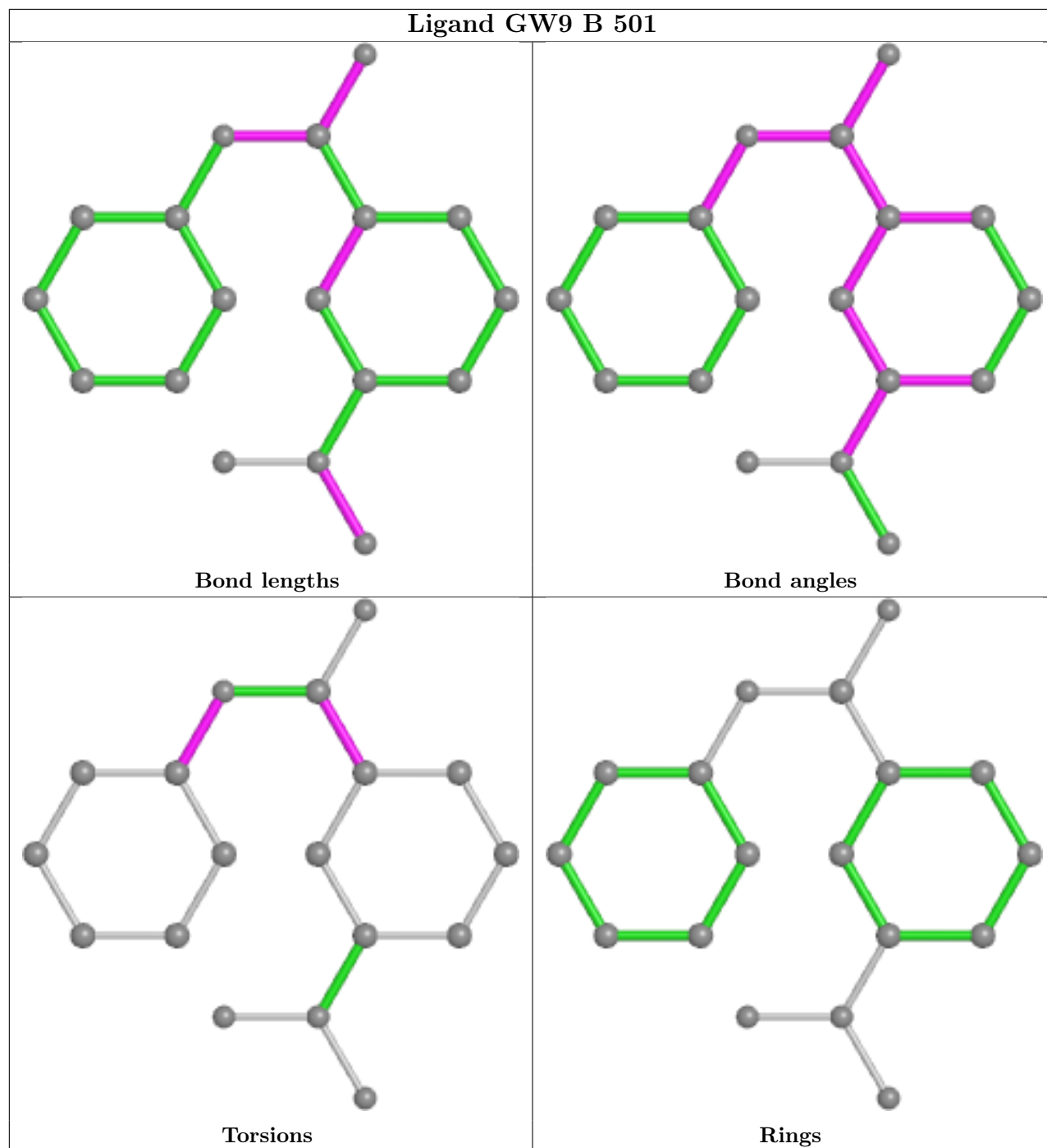
3 monomers are involved in 19 short contacts:

Mol	Chain	Res	Type	Clashes	Symm-Clashes
2	A	501	NZA	4	0
2	B	502	NZA	6	0
3	B	501	GW9	9	0

The following is a two-dimensional graphical depiction of Mogul quality analysis of bond lengths, bond angles, torsion angles, and ring geometry for all instances of the Ligand of Interest. In addition, ligands with molecular weight > 250 and outliers as shown on the validation Tables will also be included. For torsion angles, if less than 5% of the Mogul distribution of torsion angles is within 10 degrees of the torsion angle in question, then that torsion angle is considered an outlier. Any bond that is central to one or more torsion angles identified as an outlier by Mogul will be highlighted in the graph. For rings, the root-mean-square deviation (RMSD) between the ring in question and similar rings identified by Mogul is calculated over all ring torsion angles. If the average RMSD is greater than 60 degrees and the minimal RMSD between the ring in question and any Mogul-identified rings is also greater than 60 degrees, then that ring is considered an outlier. The outliers are highlighted in purple. The color gray indicates Mogul did not find sufficient equivalents in the CSD to analyse the geometry.







5.7 Other polymers [i](#)

There are no such residues in this entry.

5.8 Polymer linkage issues [i](#)

There are no chain breaks in this entry.

6 Fit of model and data [i](#)

6.1 Protein, DNA and RNA chains [i](#)

In the following table, the column labelled ‘#RSRZ> 2’ contains the number (and percentage) of RSRZ outliers, followed by percent RSRZ outliers for the chain as percentile scores relative to all X-ray entries and entries of similar resolution. The OWAB column contains the minimum, median, 95th percentile and maximum values of the occupancy-weighted average B-factor per residue. The column labelled ‘Q< 0.9’ lists the number of (and percentage) of residues with an average occupancy less than 0.9.

Mol	Chain	Analysed	<RSRZ>	#RSRZ>2	OWAB(Å ²)	Q<0.9
1	A	250/275 (90%)	-0.24	0 100 100	33, 55, 94, 106	0
1	B	240/275 (87%)	-0.25	0 100 100	29, 53, 88, 94	0
All	All	490/550 (89%)	-0.24	0 100 100	29, 54, 90, 106	0

There are no RSRZ outliers to report.

6.2 Non-standard residues in protein, DNA, RNA chains [i](#)

There are no non-standard protein/DNA/RNA residues in this entry.

6.3 Carbohydrates [i](#)

There are no monosaccharides in this entry.

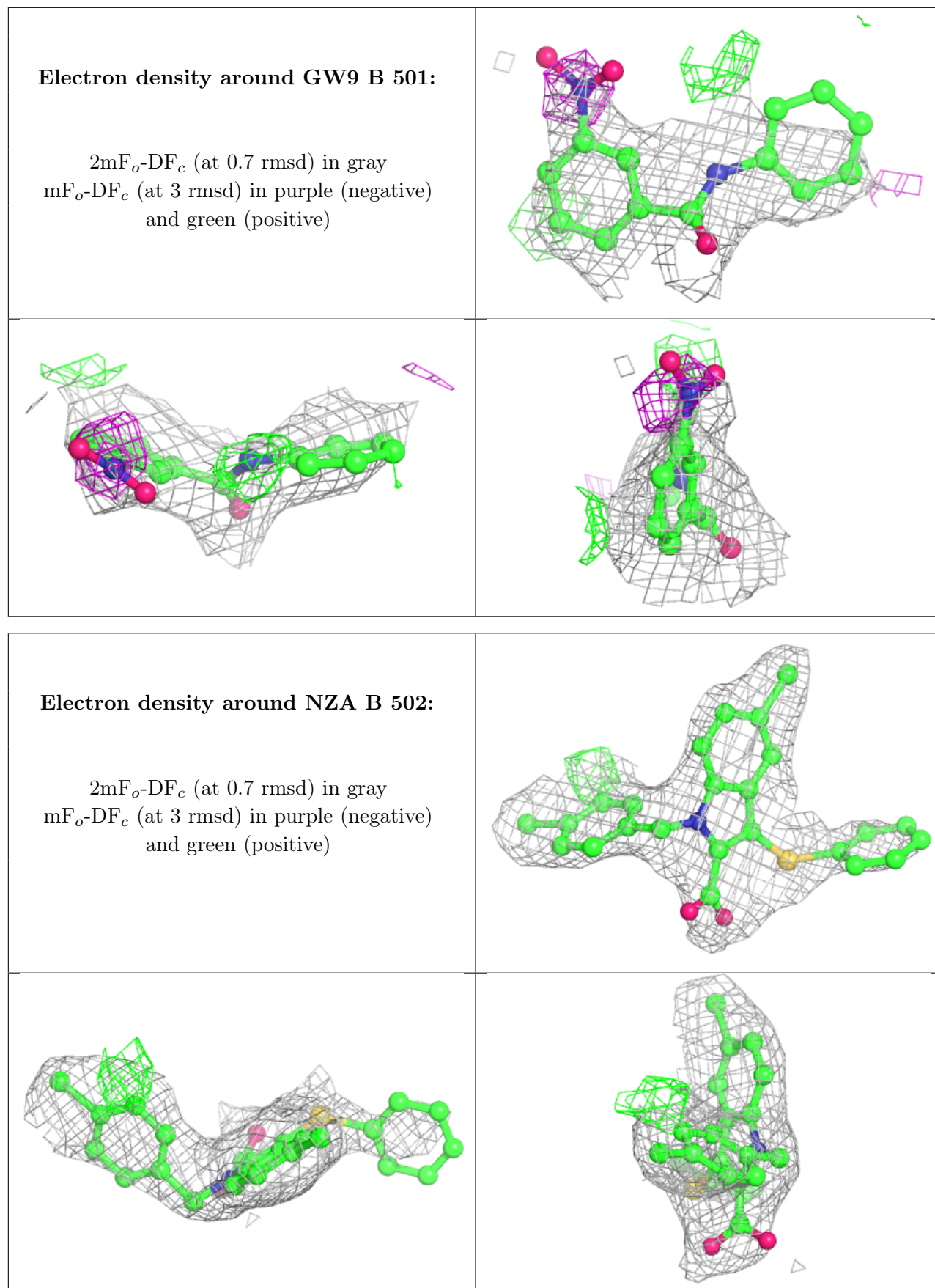
6.4 Ligands [i](#)

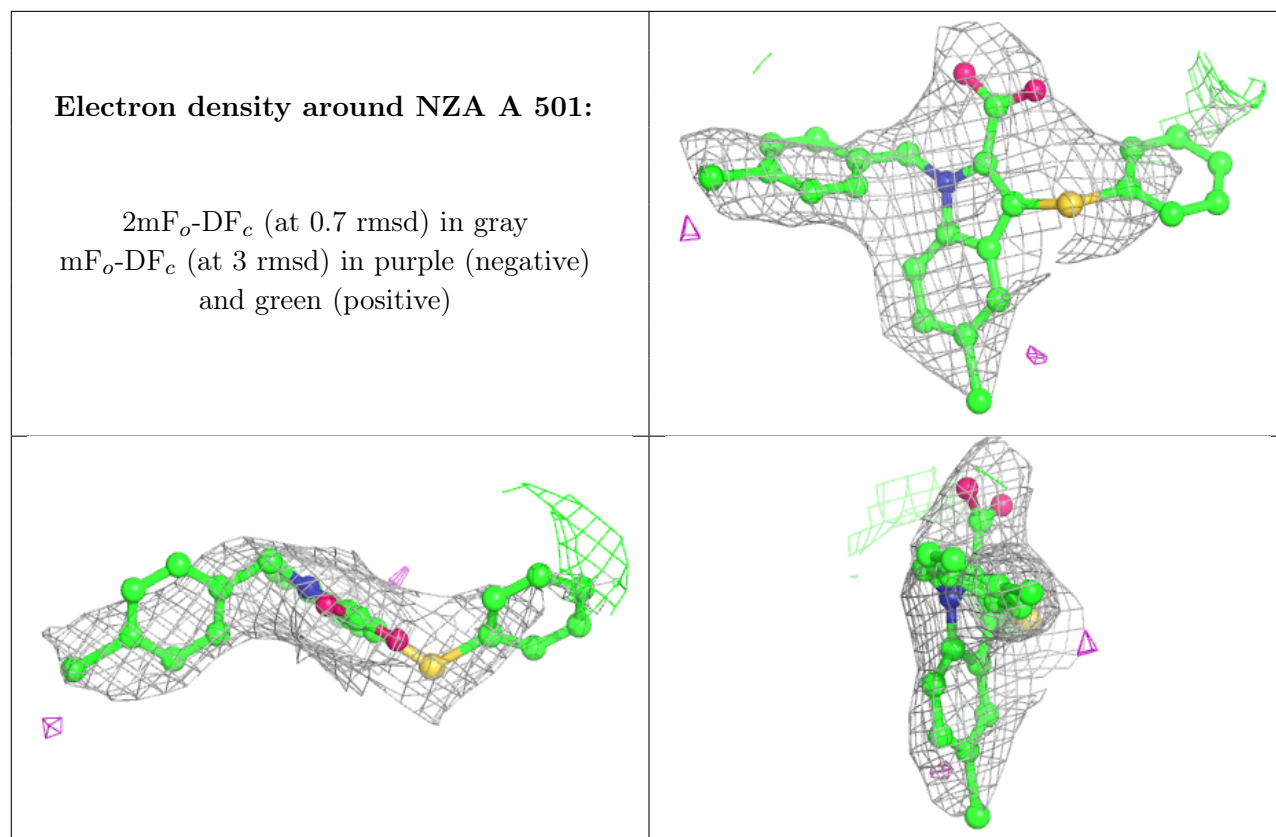
In the following table, the Atoms column lists the number of modelled atoms in the group and the number defined in the chemical component dictionary. The B-factors column lists the minimum, median, 95th percentile and maximum values of B factors of atoms in the group. The column labelled ‘Q< 0.9’ lists the number of atoms with occupancy less than 0.9.

Mol	Type	Chain	Res	Atoms	RSCC	RSR	B-factors(Å ²)	Q<0.9
3	GW9	B	501	18/19	0.82	0.31	69,81,91,92	0
2	NZA	B	502	28/28	0.86	0.33	54,68,80,87	0
2	NZA	A	501	28/28	0.86	0.34	66,78,96,104	0

The following is a graphical depiction of the model fit to experimental electron density of all instances of the Ligand of Interest. In addition, ligands with molecular weight > 250 and outliers as shown on the geometry validation Tables will also be included. Each fit is shown from different

orientation to approximate a three-dimensional view.





6.5 Other polymers [i](#)

There are no such residues in this entry.