



# Full wwPDB X-ray Structure Validation Report ⓘ

Mar 14, 2018 – 03:26 am GMT

PDB ID : 4ZHH  
Title : Siderocalin-mediated recognition and cellular uptake of actinides  
Authors : Allred, B.E.; Rupert, P.B.; Gauny, S.S.; An, D.D.; Ralston, C.Y.; Sturzbecher-Hoehne, M.; Strong, R.K.; Abergel, R.J.  
Deposited on : 2015-04-24  
Resolution : 2.04 Å(reported)

This is a Full wwPDB X-ray Structure Validation Report for a publicly released PDB entry.

We welcome your comments at [validation@mail.wwpdb.org](mailto:validation@mail.wwpdb.org)

A user guide is available at

<https://www.wwpdb.org/validation/2017/XrayValidationReportHelp>

with specific help available everywhere you see the ⓘ symbol.

---

The following versions of software and data (see [references ⓘ](#)) were used in the production of this report:

MolProbity : 4.02b-467  
Mogul : 1.7.3 (157068), CSD as539be (2018)  
Xtrriage (Phenix) : 1.13  
EDS : trunk31020  
Percentile statistics : 20171227.v01 (using entries in the PDB archive December 27th 2017)  
Refmac : 5.8.0158  
CCP4 : 7.0 (Gargrove)  
Ideal geometry (proteins) : Engh & Huber (2001)  
Ideal geometry (DNA, RNA) : Parkinson et al. (1996)  
Validation Pipeline (wwPDB-VP) : trunk31020

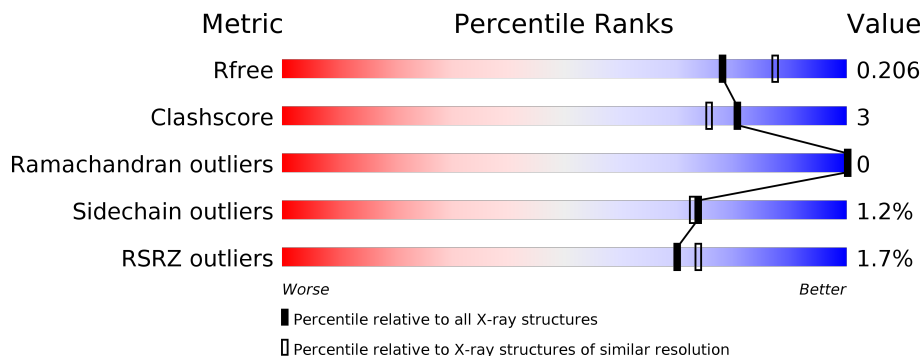
# 1 Overall quality at a glance

The following experimental techniques were used to determine the structure:

*X-RAY DIFFRACTION*

The reported resolution of this entry is 2.04 Å.

Percentile scores (ranging between 0-100) for global validation metrics of the entry are shown in the following graphic. The table shows the number of entries on which the scores are based.



Metric	Whole archive (#Entries)	Similar resolution (#Entries, resolution range(Å))
$R_{free}$	111664	1449 (2.04-2.04)
Clashscore	122126	1524 (2.04-2.04)
Ramachandran outliers	120053	1512 (2.04-2.04)
Sidechain outliers	120020	1512 (2.04-2.04)
RSRZ outliers	108989	1429 (2.04-2.04)

The table below summarises the geometric issues observed across the polymeric chains and their fit to the electron density. The red, orange, yellow and green segments on the lower bar indicate the fraction of residues that contain outliers for  $\geq 3$ , 2, 1 and 0 types of geometric quality criteria. A grey segment represents the fraction of residues that are not modelled. The numeric value for each fraction is indicated below the corresponding segment, with a dot representing fractions  $\leq 5\%$ . The upper red bar (where present) indicates the fraction of residues that have poor fit to the electron density. The numeric value is given above the bar.

Mol	Chain	Length	Quality of chain
1	A	180	 2% 91% 7%
1	B	180	 2% 92% 6%
1	C	180	 2% 90% 7%
1	D	180	 2% 88% 8%
1	E	180	 2% 93% 5%
1	F	180	 2% 94%

## 2 Entry composition [i](#)

There are 7 unique types of molecules in this entry. The entry contains 9430 atoms, of which 0 are hydrogens and 0 are deuteriums.

In the tables below, the ZeroOcc column contains the number of atoms modelled with zero occupancy, the AltConf column contains the number of residues with at least one atom in alternate conformation and the Trace column contains the number of residues modelled with at most 2 atoms.

- Molecule 1 is a protein called Neutrophil gelatinase-associated lipocalin.

Mol	Chain	Residues	Atoms					ZeroOcc	AltConf	Trace
			Total	C	N	O	S			
1	A	177	1429	925	239	261	4	0	1	0
1	B	175	1417	919	236	258	4	0	2	0
1	C	175	1416	919	237	256	4	0	1	0
1	D	176	1429	924	237	264	4	0	2	0
1	E	176	1422	923	234	261	4	0	2	0
1	F	175	1422	922	235	261	4	0	2	0

There are 18 discrepancies between the modelled and reference sequences:

Chain	Residue	Modelled	Actual	Comment	Reference
A	-1	GLY	-	expression tag	UNP P80188
A	0	SER	-	expression tag	UNP P80188
A	87	SER	CYS	engineered mutation	UNP P80188
B	-1	GLY	-	expression tag	UNP P80188
B	0	SER	-	expression tag	UNP P80188
B	87	SER	CYS	engineered mutation	UNP P80188
C	-1	GLY	-	expression tag	UNP P80188
C	0	SER	-	expression tag	UNP P80188
C	87	SER	CYS	engineered mutation	UNP P80188
D	-1	GLY	-	expression tag	UNP P80188
D	0	SER	-	expression tag	UNP P80188
D	87	SER	CYS	engineered mutation	UNP P80188
E	-1	GLY	-	expression tag	UNP P80188
E	0	SER	-	expression tag	UNP P80188
E	87	SER	CYS	engineered mutation	UNP P80188
F	-1	GLY	-	expression tag	UNP P80188
F	0	SER	-	expression tag	UNP P80188

*Continued on next page...*

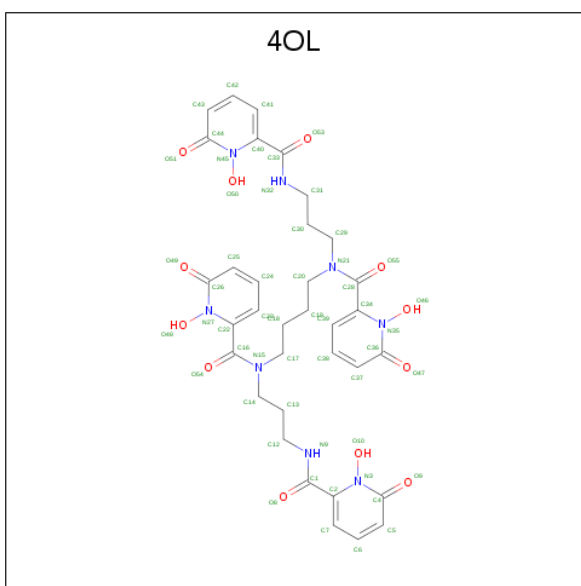
Continued from previous page...

Chain	Residue	Modelled	Actual	Comment	Reference
F	87	SER	CYS	engineered mutation	UNP P80188

- Molecule 2 is SAMARIUM (III) ION (three-letter code: SM) (formula: Sm).

Mol	Chain	Residues	Atoms	ZeroOcc	AltConf
2	D	1	Total Sm 1 1	0	0
2	E	1	Total Sm 1 1	0	0
2	B	1	Total Sm 1 1	0	0
2	C	1	Total Sm 1 1	0	0
2	A	1	Total Sm 1 1	0	0
2	F	1	Total Sm 1 1	0	0

- Molecule 3 is N,N'-butane-1,4-diylbis[1-hydroxy-N-(3-{{(1-hydroxy-6-oxo-1,6-dihydropyridin-2-yl)carbonyl}amino}propyl)-6-oxo-1,6-dihydropyridine-2-carboxamide] (three-letter code: 4OL) (formula: C<sub>34</sub>H<sub>38</sub>N<sub>8</sub>O<sub>12</sub>).



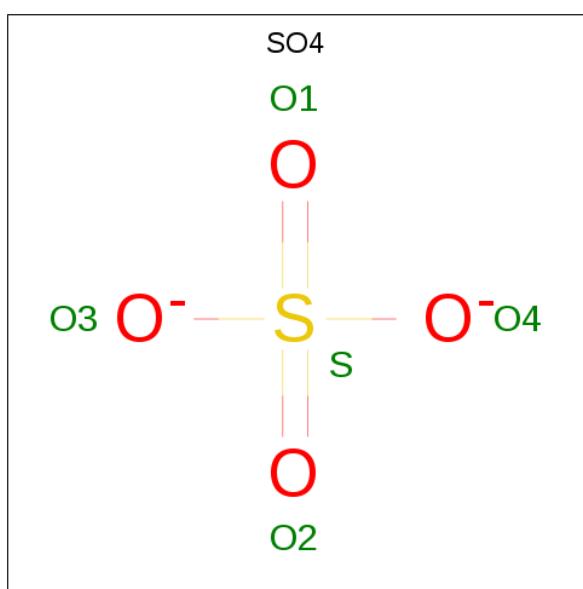
Mol	Chain	Residues	Atoms	ZeroOcc	AltConf
3	A	1	Total C N O 54 34 8 12	0	0
3	B	1	Total C N O 54 34 8 12	0	0

Continued on next page...

Continued from previous page...

Mol	Chain	Residues	Atoms				ZeroOcc	AltConf
3	C	1	Total	C	N	O	0	0
			54	34	8	12		
3	D	1	Total	C	N	O	0	0
			54	34	8	12		
3	E	1	Total	C	N	O	0	0
			54	34	8	12		
3	F	1	Total	C	N	O	0	0
			54	34	8	12		

- Molecule 4 is SULFATE ION (three-letter code: SO4) (formula: O<sub>4</sub>S).



Mol	Chain	Residues	Atoms		ZeroOcc	AltConf
4	A	1	Total	O S	0	0
			5	4 1		
4	B	1	Total	O S	0	0
			5	4 1		
4	C	1	Total	O S	0	0
			5	4 1		
4	E	1	Total	O S	0	0
			5	4 1		
4	F	1	Total	O S	0	0
			5	4 1		

- Molecule 5 is GLYCEROL (three-letter code: GOL) (formula: C<sub>3</sub>H<sub>8</sub>O<sub>3</sub>).



Mol	Chain	Residues	Atoms	ZeroOcc	AltConf
5	A	1	Total C O 6 3 3	0	0
5	D	1	Total C O 6 3 3	0	0
5	D	1	Total C O 6 3 3	0	0
5	D	1	Total C O 6 3 3	0	0
5	E	1	Total C O 6 3 3	0	0

- Molecule 6 is CHLORIDE ION (three-letter code: CL) (formula: Cl).

Mol	Chain	Residues	Atoms	ZeroOcc	AltConf
6	D	2	Total Cl 2 2	0	0
6	E	1	Total Cl 1 1	0	0
6	B	1	Total Cl 1 1	0	0
6	C	2	Total Cl 2 2	0	0
6	A	1	Total Cl 1 1	0	0
6	F	1	Total Cl 1 1	0	0

- Molecule 7 is water.

Mol	Chain	Residues	Atoms		ZeroOcc	AltConf
7	A	113	Total 113	O 113	0	0
7	B	93	Total 93	O 93	0	0
7	C	100	Total 100	O 100	0	0
7	D	73	Total 73	O 73	0	0
7	E	53	Total 53	O 53	0	0
7	F	70	Total 70	O 70	0	0

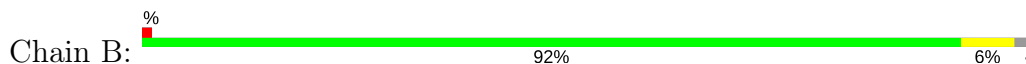
### 3 Residue-property plots [i](#)

These plots are drawn for all protein, RNA and DNA chains in the entry. The first graphic for a chain summarises the proportions of the various outlier classes displayed in the second graphic. The second graphic shows the sequence view annotated by issues in geometry and electron density. Residues are color-coded according to the number of geometric quality criteria for which they contain at least one outlier: green = 0, yellow = 1, orange = 2 and red = 3 or more. A red dot above a residue indicates a poor fit to the electron density ( $RSRZ > 2$ ). Stretches of 2 or more consecutive residues without any outlier are shown as a green connector. Residues present in the sample, but not in the model, are shown in grey.

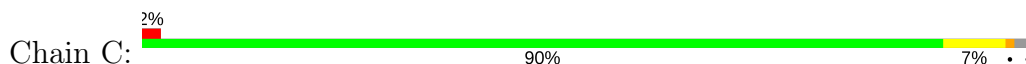
- Molecule 1: Neutrophil gelatinase-associated lipocalin



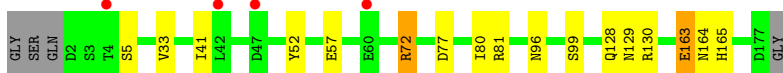
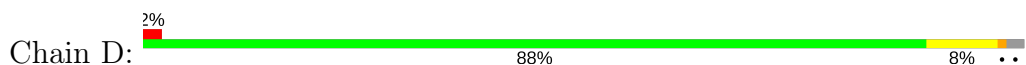
- Molecule 1: Neutrophil gelatinase-associated lipocalin



- Molecule 1: Neutrophil gelatinase-associated lipocalin



- Molecule 1: Neutrophil gelatinase-associated lipocalin

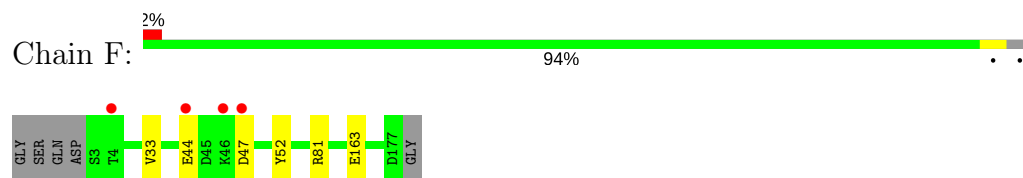


- Molecule 1: Neutrophil gelatinase-associated lipocalin



- Molecule 1: Neutrophil gelatinase-associated lipocalin





## 4 Data and refinement statistics

Property	Value	Source
Space group	P 21 21 21	Depositor
Cell constants a, b, c, $\alpha$ , $\beta$ , $\gamma$	110.68Å 115.32Å 120.52Å 90.00° 90.00° 90.00°	Depositor
Resolution (Å)	50.00 – 2.04 38.99 – 2.04	Depositor EDS
% Data completeness (in resolution range)	99.3 (50.00-2.04) 99.3 (38.99-2.04)	Depositor EDS
$R_{merge}$	0.07	Depositor
$R_{sym}$	(Not available)	Depositor
$\langle I/\sigma(I) \rangle$ <sup>1</sup>	1.37 (at 2.03Å)	Xtrriage
Refinement program	REFMAC 5.8.0049	Depositor
R, $R_{free}$	0.174 , 0.199 0.182 , 0.206	Depositor DCC
$R_{free}$ test set	4899 reflections (4.99%)	wwPDB-VP
Wilson B-factor (Å <sup>2</sup> )	22.9	Xtrriage
Anisotropy	0.114	Xtrriage
Bulk solvent $k_{sol}$ (e/Å <sup>3</sup> ), $B_{sol}$ (Å <sup>2</sup> )	0.35 , 46.7	EDS
L-test for twinning <sup>2</sup>	$\langle  L  \rangle = 0.49$ , $\langle L^2 \rangle = 0.32$	Xtrriage
Estimated twinning fraction	0.013 for k,h,-l	Xtrriage
$F_o, F_c$ correlation	0.95	EDS
Total number of atoms	9430	wwPDB-VP
Average B, all atoms (Å <sup>2</sup> )	28.0	wwPDB-VP

Xtrriage's analysis on translational NCS is as follows: *The largest off-origin peak in the Patterson function is 3.31% of the height of the origin peak. No significant pseudotranslation is detected.*

<sup>1</sup>Intensities estimated from amplitudes.

<sup>2</sup>Theoretical values of  $\langle |L| \rangle$ ,  $\langle L^2 \rangle$  for acentric reflections are 0.5, 0.333 respectively for untwinned datasets, and 0.375, 0.2 for perfectly twinned datasets.

## 5 Model quality [i](#)

### 5.1 Standard geometry [i](#)

Bond lengths and bond angles in the following residue types are not validated in this section: GOL, SM, SO4, 4OL, CL

The Z score for a bond length (or angle) is the number of standard deviations the observed value is removed from the expected value. A bond length (or angle) with  $|Z| > 5$  is considered an outlier worth inspection. RMSZ is the root-mean-square of all Z scores of the bond lengths (or angles).

Mol	Chain	Bond lengths		Bond angles	
		RMSZ	# Z  >5	RMSZ	# Z  >5
1	A	0.50	0/1469	0.59	0/1992
1	B	0.49	0/1460	0.60	0/1982
1	C	0.50	0/1456	0.60	0/1975
1	D	0.49	0/1472	0.60	0/1998
1	E	0.46	0/1465	0.60	0/1988
1	F	0.45	0/1465	0.60	0/1988
All	All	0.48	0/8787	0.60	0/11923

Chiral center outliers are detected by calculating the chiral volume of a chiral center and verifying if the center is modelled as a planar moiety or with the opposite hand. A planarity outlier is detected by checking planarity of atoms in a peptide group, atoms in a mainchain group or atoms of a sidechain that are expected to be planar.

Mol	Chain	#Chirality outliers	#Planarity outliers
1	E	0	1

There are no bond length outliers.

There are no bond angle outliers.

There are no chirality outliers.

All (1) planarity outliers are listed below:

Mol	Chain	Res	Type	Group
1	E	2	ASP	Peptide

### 5.2 Too-close contacts [i](#)

In the following table, the Non-H and H(model) columns list the number of non-hydrogen atoms and hydrogen atoms in the chain respectively. The H(added) column lists the number of hydrogen atoms added and optimized by MolProbity. The Clashes column lists the number of clashes within

the asymmetric unit, whereas Symm-Clashes lists symmetry related clashes.

Mol	Chain	Non-H	H(model)	H(added)	Clashes	Symm-Clashes
1	A	1429	0	1412	7	1
1	B	1417	0	1395	10	1
1	C	1416	0	1402	12	0
1	D	1429	0	1404	16	0
1	E	1422	0	1404	8	0
1	F	1422	0	1403	2	0
2	A	1	0	0	0	0
2	B	1	0	0	0	0
2	C	1	0	0	0	0
2	D	1	0	0	0	0
2	E	1	0	0	0	0
2	F	1	0	0	0	0
3	A	54	0	34	0	0
3	B	54	0	34	0	0
3	C	54	0	34	0	0
3	D	54	0	34	1	0
3	E	54	0	34	1	0
3	F	54	0	34	0	0
4	A	5	0	0	0	0
4	B	5	0	0	0	0
4	C	5	0	0	0	0
4	E	5	0	0	0	0
4	F	5	0	0	0	0
5	A	6	0	8	0	0
5	D	18	0	24	2	0
5	E	6	0	8	0	0
6	A	1	0	0	0	0
6	B	1	0	0	0	0
6	C	2	0	0	0	0
6	D	2	0	0	0	0
6	E	1	0	0	0	0
6	F	1	0	0	0	0
7	A	113	0	0	2	0
7	B	93	0	0	2	0
7	C	100	0	0	1	0
7	D	73	0	0	0	0
7	E	53	0	0	1	0
7	F	70	0	0	0	0
All	All	9430	0	8664	51	1

The all-atom clashscore is defined as the number of clashes found per 1000 atoms (including hydrogen atoms). The all-atom clashscore for this structure is 3.

All (51) close contacts within the same asymmetric unit are listed below, sorted by their clash magnitude.

Atom-1	Atom-2	Interatomic distance (Å)	Clash overlap (Å)
1:C:144:LEU:HD13	1:C:148:LEU:CD2	1.56	1.34
1:C:144:LEU:HD13	1:C:148:LEU:HD23	1.09	1.08
1:A:148:LEU:CD1	7:A:406:HOH:O	2.11	0.96
1:C:34:VAL:HG21	1:C:144:LEU:HD12	1.46	0.95
1:C:144:LEU:CD1	1:C:148:LEU:HD23	1.98	0.93
1:A:148:LEU:HD12	7:A:406:HOH:O	1.65	0.93
1:D:163:GLU:HG2	1:E:150:GLU:OE2	1.71	0.90
1:D:5:SER:OG	1:D:130:ARG:NH1	2.14	0.80
1:C:144:LEU:HD13	1:C:148:LEU:HD21	1.62	0.79
1:B:72:ARG:HD3	1:B:77[A]:ASP:OD1	1.83	0.78
1:D:163:GLU:CG	1:E:150:GLU:OE2	2.38	0.72
1:B:72:ARG:CG	1:B:77[A]:ASP:OD1	2.38	0.72
1:D:72:ARG:CG	1:D:77[A]:ASP:OD1	2.38	0.72
1:B:157:LYS:HD3	7:B:321:HOH:O	1.89	0.71
1:B:72:ARG:CD	1:B:77[A]:ASP:OD1	2.38	0.71
1:B:157:LYS:HB2	7:B:370:HOH:O	1.91	0.70
1:C:144:LEU:CD1	1:C:148:LEU:CD2	2.53	0.63
1:B:72:ARG:HG2	1:B:77[A]:ASP:OD1	2.00	0.61
1:D:72:ARG:HG2	1:D:77[A]:ASP:OD1	2.01	0.60
1:C:34:VAL:HG21	1:C:144:LEU:CD1	2.26	0.57
1:B:72:ARG:HG2	1:B:77[A]:ASP:CG	2.28	0.53
1:E:60:GLU:HB3	7:E:343:HOH:O	2.12	0.50
1:D:163:GLU:OE2	1:E:150:GLU:CG	2.62	0.47
1:D:163:GLU:CD	1:E:150:GLU:OE2	2.52	0.47
1:C:157:LYS:NZ	1:C:163:GLU:OE1	2.43	0.47
1:A:128:GLN:O	1:A:129:ASN:HB2	2.15	0.46
1:C:33:VAL:HG21	1:C:52:TYR:CE2	2.49	0.46
1:C:59:LYS:HE3	1:C:63:SER:OG	2.16	0.46
1:C:137:LEU:HD11	1:C:148:LEU:HD21	1.96	0.46
1:D:96[B]:ASN:ND2	1:D:99:SER:HB3	2.32	0.45
1:A:33:VAL:HG21	1:A:52:TYR:CE2	2.52	0.44
1:F:33:VAL:HG21	1:F:52:TYR:CE2	2.52	0.44
1:F:44:GLU:HG2	1:F:47:ASP:H	1.82	0.44
1:E:33:VAL:HG21	1:E:52:TYR:CE2	2.52	0.44
1:D:164:ASN:HD21	5:D:206:GOL:H11	1.81	0.44
1:D:128:GLN:O	1:D:129:ASN:HB2	2.18	0.44
1:E:128:GLN:O	1:E:129:ASN:HB2	2.18	0.44
1:E:125:LYS:HE2	3:E:202:4OL:H18	2.00	0.43
1:A:70:LEU:HD12	1:A:70:LEU:N	2.34	0.43
1:D:33:VAL:HG21	1:D:52:TYR:CE2	2.53	0.43

*Continued on next page...*

Continued from previous page...

Atom-1	Atom-2	Interatomic distance (Å)	Clash overlap (Å)
1:D:165:HIS:NE2	5:D:206:GOL:H32	2.34	0.42
1:A:49:GLN:HG2	1:A:169:PRO:HG3	2.02	0.42
1:B:49:GLN:HG2	1:B:169:PRO:HG3	2.02	0.42
1:D:41:ILE:HD11	3:D:202:4OL:H4	2.02	0.41
1:B:33:VAL:HG21	1:B:52:TYR:CE2	2.55	0.41
1:A:59:LYS:HD3	1:A:65[A]:ASN:CG	2.41	0.41
1:B:128:GLN:O	1:B:129:ASN:HB2	2.20	0.41
1:C:49:GLN:HG2	1:C:169:PRO:HG3	2.03	0.41
1:D:72:ARG:HG3	1:D:77[A]:ASP:OD1	2.19	0.41
7:C:348:HOH:O	1:D:80:ILE:HD11	2.20	0.41
1:D:57:GLU:HA	1:D:57:GLU:OE2	2.20	0.40

All (1) symmetry-related close contacts are listed below. The label for Atom-2 includes the symmetry operator and encoded unit-cell translations to be applied.

Atom-1	Atom-2	Interatomic distance (Å)	Clash overlap (Å)
1:A:6:ASP:OD2	1:B:77[B]:ASP:OD1[3_555]	2.17	0.03

## 5.3 Torsion angles [i](#)

### 5.3.1 Protein backbone [i](#)

In the following table, the Percentiles column shows the percent Ramachandran outliers of the chain as a percentile score with respect to all X-ray entries followed by that with respect to entries of similar resolution.

The Analysed column shows the number of residues for which the backbone conformation was analysed, and the total number of residues.

Mol	Chain	Analysed	Favoured	Allowed	Outliers	Percentiles	
1	A	176/180 (98%)	172 (98%)	4 (2%)	0	100	100
1	B	175/180 (97%)	172 (98%)	3 (2%)	0	100	100
1	C	174/180 (97%)	171 (98%)	3 (2%)	0	100	100
1	D	176/180 (98%)	173 (98%)	3 (2%)	0	100	100
1	E	176/180 (98%)	173 (98%)	3 (2%)	0	100	100
1	F	175/180 (97%)	172 (98%)	3 (2%)	0	100	100
All	All	1052/1080 (97%)	1033 (98%)	19 (2%)	0	100	100

There are no Ramachandran outliers to report.

### 5.3.2 Protein sidechains [i](#)

In the following table, the Percentiles column shows the percent sidechain outliers of the chain as a percentile score with respect to all X-ray entries followed by that with respect to entries of similar resolution.

The Analysed column shows the number of residues for which the sidechain conformation was analysed, and the total number of residues.

Mol	Chain	Analysed	Rotameric	Outliers	Percentiles	
1	A	158/164 (96%)	156 (99%)	2 (1%)	71	70
1	B	156/164 (95%)	155 (99%)	1 (1%)	87	88
1	C	156/164 (95%)	154 (99%)	2 (1%)	71	70
1	D	159/164 (97%)	156 (98%)	3 (2%)	60	55
1	E	158/164 (96%)	157 (99%)	1 (1%)	87	88
1	F	158/164 (96%)	156 (99%)	2 (1%)	71	70
All	All	945/984 (96%)	934 (99%)	11 (1%)	74	73

All (11) residues with a non-rotameric sidechain are listed below:

Mol	Chain	Res	Type
1	A	81	ARG
1	A	163	GLU
1	B	81	ARG
1	C	59	LYS
1	C	81	ARG
1	D	72	ARG
1	D	81	ARG
1	D	163	GLU
1	E	81	ARG
1	F	81	ARG
1	F	163	GLU

Some sidechains can be flipped to improve hydrogen bonding and reduce clashes. All (4) such sidechains are listed below:

Mol	Chain	Res	Type
1	B	65	ASN
1	C	165	HIS
1	D	21	ASN

*Continued on next page...*

*Continued from previous page...*

Mol	Chain	Res	Type
1	F	88	GLN

### 5.3.3 RNA [i](#)

There are no RNA molecules in this entry.

### 5.4 Non-standard residues in protein, DNA, RNA chains [i](#)

There are no non-standard protein/DNA/RNA residues in this entry.

### 5.5 Carbohydrates [i](#)

There are no carbohydrates in this entry.

### 5.6 Ligand geometry [i](#)

Of 30 ligands modelled in this entry, 14 are monoatomic - leaving 16 for Mogul analysis.

In the following table, the Counts columns list the number of bonds (or angles) for which Mogul statistics could be retrieved, the number of bonds (or angles) that are observed in the model and the number of bonds (or angles) that are defined in the Chemical Component Dictionary. The Link column lists molecule types, if any, to which the group is linked. The Z score for a bond length (or angle) is the number of standard deviations the observed value is removed from the expected value. A bond length (or angle) with  $|Z| > 2$  is considered an outlier worth inspection. RMSZ is the root-mean-square of all Z scores of the bond lengths (or angles).

Mol	Type	Chain	Res	Link	Bond lengths			Bond angles		
					Counts	RMSZ	# Z  > 2	Counts	RMSZ	# Z  > 2
3	4OL	A	202	2	49,57,57	0.71	0	50,78,78	0.81	0
4	SO4	A	203	-	4,4,4	0.50	0	6,6,6	0.18	0
5	GOL	A	204	-	5,5,5	0.18	0	5,5,5	0.56	0
3	4OL	B	202	2	49,57,57	0.73	1 (2%)	50,78,78	1.03	4 (8%)
4	SO4	B	203	-	4,4,4	0.47	0	6,6,6	0.28	0
3	4OL	C	202	2	49,57,57	0.69	1 (2%)	50,78,78	0.88	2 (4%)
4	SO4	C	203	-	4,4,4	0.55	0	6,6,6	0.24	0
3	4OL	D	202	2	49,57,57	0.76	2 (4%)	50,78,78	1.18	5 (10%)
5	GOL	D	203	-	5,5,5	0.35	0	5,5,5	0.34	0
5	GOL	D	205	-	5,5,5	0.18	0	5,5,5	0.38	0
5	GOL	D	206	-	5,5,5	0.27	0	5,5,5	0.22	0
3	4OL	E	202	2	49,57,57	0.67	1 (2%)	50,78,78	0.82	1 (2%)



Mol	Type	Chain	Res	Link	Bond lengths			Bond angles		
					Counts	RMSZ	# Z  > 2	Counts	RMSZ	# Z  > 2
4	SO4	E	203	-	4,4,4	0.30	0	6,6,6	0.30	0
5	GOL	E	205	-	5,5,5	0.26	0	5,5,5	0.47	0
3	4OL	F	202	2	49,57,57	0.70	1 (2%)	50,78,78	0.90	1 (2%)
4	SO4	F	203	-	4,4,4	0.50	0	6,6,6	0.18	0

In the following table, the Chirals column lists the number of chiral outliers, the number of chiral centers analysed, the number of these observed in the model and the number defined in the Chemical Component Dictionary. Similar counts are reported in the Torsion and Rings columns. '-' means no outliers of that kind were identified.

Mol	Type	Chain	Res	Link	Chirals	Torsions	Rings
3	4OL	A	202	2	-	0/45/45/45	0/4/4/4
4	SO4	A	203	-	-	0/0/0/0	0/0/0/0
5	GOL	A	204	-	-	0/4/4/4	0/0/0/0
3	4OL	B	202	2	-	0/45/45/45	0/4/4/4
4	SO4	B	203	-	-	0/0/0/0	0/0/0/0
3	4OL	C	202	2	-	0/45/45/45	0/4/4/4
4	SO4	C	203	-	-	0/0/0/0	0/0/0/0
3	4OL	D	202	2	-	0/45/45/45	0/4/4/4
5	GOL	D	203	-	-	0/4/4/4	0/0/0/0
5	GOL	D	205	-	-	0/4/4/4	0/0/0/0
5	GOL	D	206	-	-	0/4/4/4	0/0/0/0
3	4OL	E	202	2	-	0/45/45/45	0/4/4/4
4	SO4	E	203	-	-	0/0/0/0	0/0/0/0
5	GOL	E	205	-	-	0/4/4/4	0/0/0/0
3	4OL	F	202	2	-	0/45/45/45	0/4/4/4
4	SO4	F	203	-	-	0/0/0/0	0/0/0/0

All (6) bond length outliers are listed below:

Mol	Chain	Res	Type	Atoms	Z	Observed(Å)	Ideal(Å)
3	F	202	4OL	C2-N3	2.00	1.42	1.37
3	E	202	4OL	C40-N45	2.03	1.42	1.37
3	D	202	4OL	C34-N35	2.05	1.42	1.37
3	D	202	4OL	C22-N27	2.13	1.42	1.37
3	C	202	4OL	C2-N3	2.19	1.42	1.37
3	B	202	4OL	C34-N35	2.65	1.43	1.37

All (13) bond angle outliers are listed below:

Mol	Chain	Res	Type	Atoms	Z	Observed(°)	Ideal(°)
3	D	202	4OL	O48-N27-C26	-2.30	113.76	118.46

*Continued on next page...*

*Continued from previous page...*

Mol	Chain	Res	Type	Atoms	Z	Observed(°)	Ideal(°)
3	B	202	4OL	O55-C28-C34	-2.14	114.68	118.17
3	D	202	4OL	C23-C22-C16	-2.07	116.34	121.11
3	B	202	4OL	C24-C25-C26	2.05	120.81	118.14
3	C	202	4OL	C41-C40-C33	2.10	121.50	117.47
3	B	202	4OL	O46-N35-C36	2.16	122.86	118.46
3	C	202	4OL	C24-C25-C26	2.30	121.15	118.14
3	D	202	4OL	O46-N35-C36	2.35	123.25	118.46
3	B	202	4OL	C38-C37-C36	2.47	121.36	118.14
3	D	202	4OL	C6-C5-C4	2.53	121.45	118.14
3	D	202	4OL	C38-C37-C36	2.54	121.47	118.14
3	E	202	4OL	C6-C5-C4	2.60	121.54	118.14
3	F	202	4OL	C6-C5-C4	2.62	121.57	118.14

There are no chirality outliers.

There are no torsion outliers.

There are no ring outliers.

3 monomers are involved in 4 short contacts:

Mol	Chain	Res	Type	Clashes	Symm-Clashes
3	D	202	4OL	1	0
5	D	206	GOL	2	0
3	E	202	4OL	1	0

## 5.7 Other polymers [i](#)

There are no such residues in this entry.

## 5.8 Polymer linkage issues [i](#)

There are no chain breaks in this entry.

## 6 Fit of model and data

### 6.1 Protein, DNA and RNA chains

In the following table, the column labelled ‘#RSRZ > 2’ contains the number (and percentage) of RSRZ outliers, followed by percent RSRZ outliers for the chain as percentile scores relative to all X-ray entries and entries of similar resolution. The OWAB column contains the minimum, median, 95<sup>th</sup> percentile and maximum values of the occupancy-weighted average B-factor per residue. The column labelled ‘Q < 0.9’ lists the number of (and percentage) of residues with an average occupancy less than 0.9.

Mol	Chain	Analysed	<RSRZ>	#RSRZ>2	OWAB(Å <sup>2</sup> )	Q<0.9
1	A	177/180 (98%)	-0.50	1 (0%) 89 91	15, 22, 48, 78	0
1	B	175/180 (97%)	-0.46	2 (1%) 80 83	13, 22, 47, 80	0
1	C	175/180 (97%)	-0.46	3 (1%) 70 74	13, 21, 47, 84	0
1	D	176/180 (97%)	-0.41	4 (2%) 60 65	16, 26, 58, 83	1 (0%)
1	E	176/180 (97%)	-0.28	4 (2%) 60 65	15, 28, 55, 85	0
1	F	175/180 (97%)	-0.27	4 (2%) 60 65	16, 31, 58, 91	0
All	All	1054/1080 (97%)	-0.40	18 (1%) 70 74	13, 25, 54, 91	1 (0%)

All (18) RSRZ outliers are listed below:

Mol	Chain	Res	Type	RSRZ
1	E	46	LYS	4.7
1	F	47	ASP	4.1
1	F	46	LYS	4.0
1	D	4	THR	4.0
1	D	47	ASP	3.9
1	C	46	LYS	3.7
1	C	45	ASP	3.6
1	E	45	ASP	3.4
1	B	47	ASP	3.2
1	E	47	ASP	3.1
1	D	42	LEU	3.1
1	B	46	LYS	3.0
1	C	47	ASP	2.6
1	E	60	GLU	2.5
1	D	60	GLU	2.4
1	A	46	LYS	2.3
1	F	44	GLU	2.2
1	F	4	THR	2.2

## 6.2 Non-standard residues in protein, DNA, RNA chains [i](#)

There are no non-standard protein/DNA/RNA residues in this entry.

## 6.3 Carbohydrates [i](#)

There are no carbohydrates in this entry.

## 6.4 Ligands [i](#)

In the following table, the Atoms column lists the number of modelled atoms in the group and the number defined in the chemical component dictionary. The B-factors column lists the minimum, median, 95<sup>th</sup> percentile and maximum values of B factors of atoms in the group. The column labelled 'Q< 0.9' lists the number of atoms with occupancy less than 0.9.

Mol	Type	Chain	Res	Atoms	RSCC	RSR	B-factors(Å <sup>2</sup> )	Q<0.9
5	GOL	E	205	6/6	0.82	0.23	51,55,65,65	0
5	GOL	D	205	6/6	0.83	0.26	49,50,56,62	0
5	GOL	A	204	6/6	0.86	0.16	42,47,51,62	0
5	GOL	D	203	6/6	0.87	0.12	30,40,46,55	0
4	SO4	A	203	5/5	0.88	0.29	49,66,75,75	0
5	GOL	D	206	6/6	0.89	0.14	40,55,57,60	0
4	SO4	F	203	5/5	0.89	0.31	58,71,82,88	0
4	SO4	B	203	5/5	0.91	0.22	41,51,57,63	0
3	4OL	F	202	54/54	0.95	0.08	15,26,31,32	0
3	4OL	A	202	54/54	0.96	0.08	16,24,33,34	0
4	SO4	C	203	5/5	0.96	0.18	35,48,52,61	0
3	4OL	D	202	54/54	0.96	0.09	19,27,36,39	0
3	4OL	B	202	54/54	0.97	0.09	14,23,27,29	0
3	4OL	E	202	54/54	0.97	0.08	16,27,34,35	0
3	4OL	C	202	54/54	0.97	0.08	14,22,27,28	0
6	CL	F	204	1/1	0.99	0.08	23,23,23,23	0
6	CL	D	204	1/1	0.99	0.08	18,18,18,18	0
4	SO4	E	203	5/5	0.99	0.13	37,39,42,49	0
6	CL	D	207	1/1	0.99	0.05	32,32,32,32	0
6	CL	C	205	1/1	0.99	0.04	26,26,26,26	0
6	CL	B	204	1/1	0.99	0.08	17,17,17,17	0
2	SM	C	201	1/1	1.00	0.07	20,20,20,20	0
2	SM	D	201	1/1	1.00	0.06	27,27,27,27	0
6	CL	A	205	1/1	1.00	0.06	18,18,18,18	0
6	CL	E	204	1/1	1.00	0.09	19,19,19,19	0
2	SM	B	201	1/1	1.00	0.06	20,20,20,20	0
6	CL	C	204	1/1	1.00	0.09	16,16,16,16	0

*Continued on next page...*

*Continued from previous page...*

Mol	Type	Chain	Res	Atoms	RSCC	RSR	B-factors( $\text{\AA}^2$ )	Q<0.9
2	SM	F	201	1/1	1.00	0.05	23,23,23,23	0
2	SM	A	201	1/1	1.00	0.07	23,23,23,23	0
2	SM	E	201	1/1	1.00	0.06	24,24,24,24	0

## 6.5 Other polymers [i](#)

There are no such residues in this entry.