



# Full wwPDB X-ray Structure Validation Report ⓘ

Nov 24, 2022 – 12:19 pm GMT

PDB ID : 7ZHB  
Title : Catalytic domain of UDP-Glucose Glycoprotein Glucosyltransferase from *Chaetomium thermophilum* in complex with UDP-glucose (conformation 2)  
Authors : Roversi, P.; Zitzmann, N.; Bayo, Y.; Le Cornu, J.D.  
Deposited on : 2022-04-06  
Resolution : 1.89 Å (reported)

This is a Full wwPDB X-ray Structure Validation Report for a publicly released PDB entry.

We welcome your comments at [validation@mail.wwpdb.org](mailto:validation@mail.wwpdb.org)

A user guide is available at

<https://www.wwpdb.org/validation/2017/XrayValidationReportHelp>

with specific help available everywhere you see the ⓘ symbol.

The types of validation reports are described at

<http://www.wwpdb.org/validation/2017/FAQs#types>.

---

The following versions of software and data (see [references ⓘ](#)) were used in the production of this report:

MolProbity : 4.02b-467  
Mogul : 1.8.4, CSD as541be (2020)  
Xtriage (Phenix) : 1.13  
EDS : 2.31.3  
buster-report : 1.1.7 (2018)  
Percentile statistics : 20191225.v01 (using entries in the PDB archive December 25th 2019)  
Refmac : 5.8.0267  
CCP4 : 7.1.010 (Gargrove)  
Ideal geometry (proteins) : Engh & Huber (2001)  
Ideal geometry (DNA, RNA) : Parkinson et al. (1996)  
Validation Pipeline (wwPDB-VP) : 2.31.3

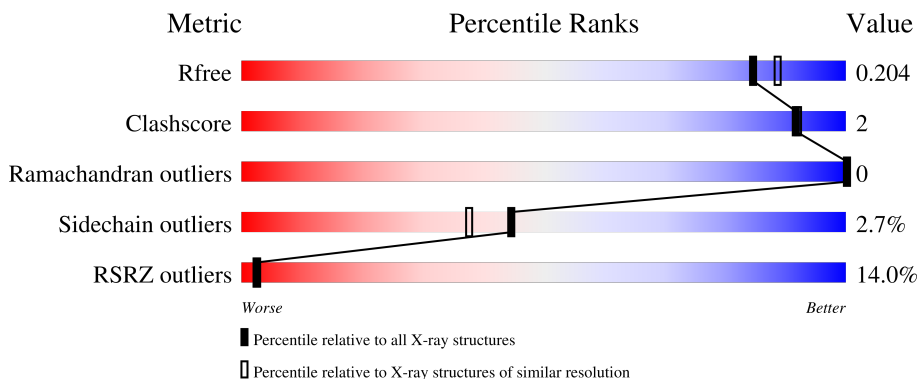
# 1 Overall quality at a glance

The following experimental techniques were used to determine the structure:

*X-RAY DIFFRACTION*

The reported resolution of this entry is 1.89 Å.

Percentile scores (ranging between 0-100) for global validation metrics of the entry are shown in the following graphic. The table shows the number of entries on which the scores are based.



Metric	Whole archive (#Entries)	Similar resolution (#Entries, resolution range(Å))
$R_{free}$	130704	6207 (1.90-1.90)
Clashscore	141614	6847 (1.90-1.90)
Ramachandran outliers	138981	6760 (1.90-1.90)
Sidechain outliers	138945	6760 (1.90-1.90)
RSRZ outliers	127900	6082 (1.90-1.90)

The table below summarises the geometric issues observed across the polymeric chains and their fit to the electron density. The red, orange, yellow and green segments of the lower bar indicate the fraction of residues that contain outliers for  $\geq 3$ , 2, 1 and 0 types of geometric quality criteria respectively. A grey segment represents the fraction of residues that are not modelled. The numeric value for each fraction is indicated below the corresponding segment, with a dot representing fractions  $\leq 5\%$ . The upper red bar (where present) indicates the fraction of residues that have poor fit to the electron density. The numeric value is given above the bar.

Mol	Chain	Length	Quality of chain
1	A	299	 13% 90% 5% . .
2	B	2	 50% 50%

The following table lists non-polymeric compounds, carbohydrate monomers and non-standard residues in protein, DNA, RNA chains that are outliers for geometric or electron-density-fit criteria:

Mol	Type	Chain	Res	Chirality	Geometry	Clashes	Electron density
2	NAG	B	1	-	-	-	X
2	NAG	B	2	-	-	-	X

## 2 Entry composition i

There are 7 unique types of molecules in this entry. The entry contains 2709 atoms, of which 40 are hydrogens and 0 are deuteriums.

In the tables below, the ZeroOcc column contains the number of atoms modelled with zero occupancy, the AltConf column contains the number of residues with at least one atom in alternate conformation and the Trace column contains the number of residues modelled with at most 2 atoms.

- Molecule 1 is a protein called UDP-glucose-glycoprotein glucosyltransferase-like protein.

Mol	Chain	Residues	Atoms					ZeroOcc	AltConf	Trace
			Total	C	N	O	S			
1	A	286	2455	1585	418	437	15	0	9	0

There are 12 discrepancies between the modelled and reference sequences:

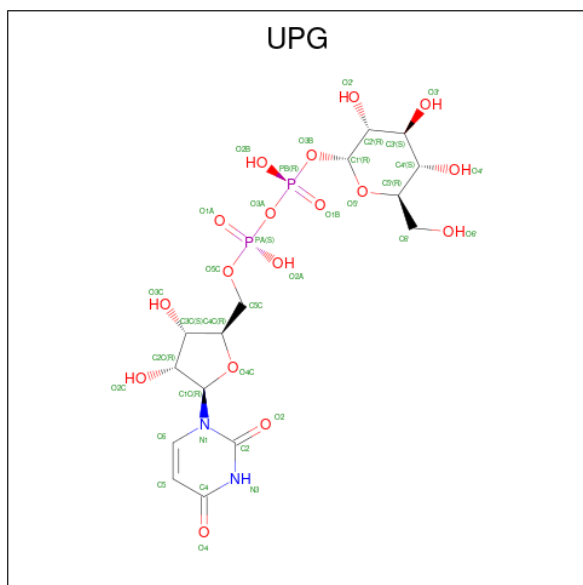
Chain	Residue	Modelled	Actual	Comment	Reference
A	1184	GLU	-	expression tag	UNP G0SB58
A	1185	THR	-	expression tag	UNP G0SB58
A	1186	GLY	-	expression tag	UNP G0SB58
A	1474	GLY	-	expression tag	UNP G0SB58
A	1475	THR	-	expression tag	UNP G0SB58
A	1476	LYS	-	expression tag	UNP G0SB58
A	1477	HIS	-	expression tag	UNP G0SB58
A	1478	HIS	-	expression tag	UNP G0SB58
A	1479	HIS	-	expression tag	UNP G0SB58
A	1480	HIS	-	expression tag	UNP G0SB58
A	1481	HIS	-	expression tag	UNP G0SB58
A	1482	HIS	-	expression tag	UNP G0SB58

- Molecule 2 is an oligosaccharide called 2-acetamido-2-deoxy-beta-D-glucopyranose-(1-4)-2-acetamido-2-deoxy-beta-D-glucopyranose.



Mol	Chain	Residues	Atoms				ZeroOcc	AltConf	Trace
			Total	C	N	O			
2	B	2	28	16	2	10	0	0	0

- Molecule 3 is URIDINE-5'-DIPHOSPHATE-GLUCOSE (three-letter code: UPG) (formula: C<sub>15</sub>H<sub>24</sub>N<sub>2</sub>O<sub>17</sub>P<sub>2</sub>) (labeled as "Ligand of Interest" by depositor).

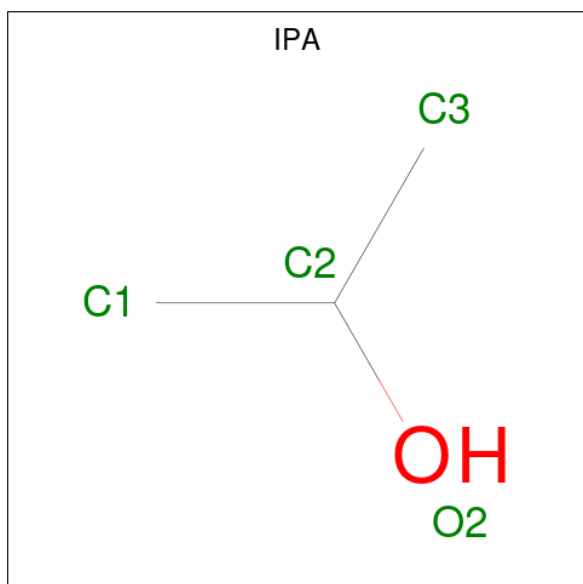


Mol	Chain	Residues	Atoms					ZeroOcc	AltConf
			Total	C	N	O	P		
3	A	1	72	30	4	34	4	0	1

- Molecule 4 is CALCIUM ION (three-letter code: CA) (formula: Ca) (labeled as "Ligand of Interest" by depositor).

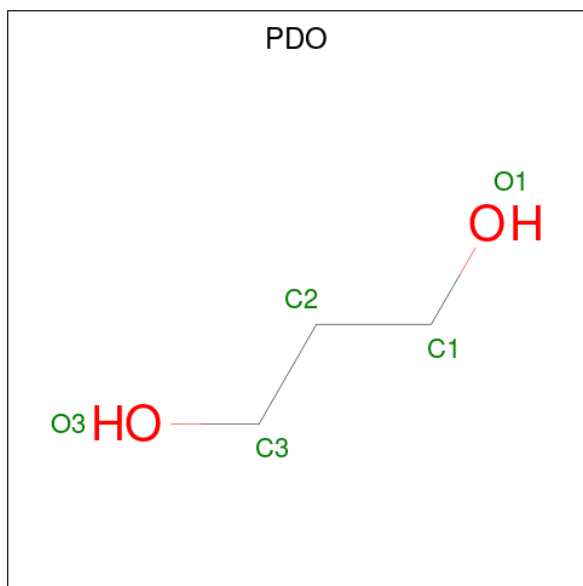
Mol	Chain	Residues	Atoms		ZeroOcc	AltConf
			Total	Ca		
4	A	1	1	1	0	0

- Molecule 5 is ISOPROPYL ALCOHOL (three-letter code: IPA) (formula: C<sub>3</sub>H<sub>8</sub>O).



Mol	Chain	Residues	Atoms				ZeroOcc	AltConf
5	A	1	Total	C	O			
			4	3	1	0	0	
5	A	1	Total	C	H	O		
			12	3	8	1	8	
5	A	1	Total	C	H	O		
			12	3	8	1	8	

- Molecule 6 is 1,3-PROPANDIOL (three-letter code: PDO) (formula: C<sub>3</sub>H<sub>8</sub>O<sub>2</sub>).



Mol	Chain	Residues	Atoms				ZeroOcc	AltConf
6	A	1	Total	C	H	O		
			13	3	8	2	8	
6	A	1	Total	C	H	O		
			13	3	8	2	8	
6	A	1	Total	C	H	O		
			13	3	8	2	8	

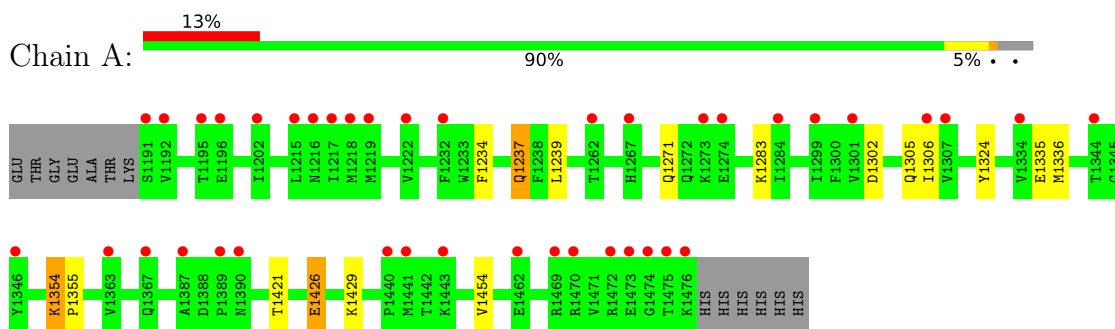
- Molecule 7 is water.

Mol	Chain	Residues	Atoms		ZeroOcc	AltConf
7	A	86	Total	O		
			86	86	0	0

### 3 Residue-property plots [i](#)

These plots are drawn for all protein, RNA, DNA and oligosaccharide chains in the entry. The first graphic for a chain summarises the proportions of the various outlier classes displayed in the second graphic. The second graphic shows the sequence view annotated by issues in geometry and electron density. Residues are color-coded according to the number of geometric quality criteria for which they contain at least one outlier: green = 0, yellow = 1, orange = 2 and red = 3 or more. A red dot above a residue indicates a poor fit to the electron density ( $RSRZ > 2$ ). Stretches of 2 or more consecutive residues without any outlier are shown as a green connector. Residues present in the sample, but not in the model, are shown in grey.

- Molecule 1: UDP-glucose-glycoprotein glucosyltransferase-like protein



- Molecule 2: 2-acetamido-2-deoxy-beta-D-glucopyranose-(1-4)-2-acetamido-2-deoxy-beta-D-glucopyranose



## 4 Data and refinement statistics i

Property	Value	Source
Space group	H 3	Depositor
Cell constants a, b, c, $\alpha$ , $\beta$ , $\gamma$	121.44Å 121.44Å 62.12Å 90.00° 90.00° 120.00°	Depositor
Resolution (Å)	21.26 – 1.89 21.26 – 1.89	Depositor EDS
% Data completeness (in resolution range)	88.5 (21.26-1.89) 88.4 (21.26-1.89)	Depositor EDS
$R_{merge}$	0.07	Depositor
$R_{sym}$	(Not available)	Depositor
$\langle I/\sigma(I) \rangle$ <sup>1</sup>	1.16 (at 1.89Å)	Xtrriage
Refinement program	BUSTER 2.10.4	Depositor
R, $R_{free}$	0.184 , 0.211 0.179 , 0.204	Depositor DCC
$R_{free}$ test set	1275 reflections (5.27%)	wwPDB-VP
Wilson B-factor (Å <sup>2</sup> )	44.6	Xtrriage
Anisotropy	0.001	Xtrriage
Bulk solvent $k_{sol}$ (e/Å <sup>3</sup> ), $B_{sol}$ (Å <sup>2</sup> )	(Not available) , (Not available)	EDS
L-test for twinning <sup>2</sup>	$\langle  L  \rangle = 0.49$ , $\langle L^2 \rangle = 0.32$	Xtrriage
Estimated twinning fraction	0.027 for h,-h-k,-l	Xtrriage
$F_o, F_c$ correlation	0.97	EDS
Total number of atoms	2709	wwPDB-VP
Average B, all atoms (Å <sup>2</sup> )	51.0	wwPDB-VP

Xtrriage's analysis on translational NCS is as follows: *The largest off-origin peak in the Patterson function is 4.27% of the height of the origin peak. No significant pseudotranslation is detected.*

<sup>1</sup>Intensities estimated from amplitudes.

<sup>2</sup>Theoretical values of  $\langle |L| \rangle$ ,  $\langle L^2 \rangle$  for acentric reflections are 0.5, 0.333 respectively for untwinned datasets, and 0.375, 0.2 for perfectly twinned datasets.



## 5 Model quality [i](#)

### 5.1 Standard geometry [i](#)

Bond lengths and bond angles in the following residue types are not validated in this section: UPG, CA, PDO, NAG, IPA

The Z score for a bond length (or angle) is the number of standard deviations the observed value is removed from the expected value. A bond length (or angle) with  $|Z| > 5$  is considered an outlier worth inspection. RMSZ is the root-mean-square of all Z scores of the bond lengths (or angles).

Mol	Chain	Bond lengths		Bond angles	
		RMSZ	# Z  >5	RMSZ	# Z  >5
1	A	0.42	0/2548	0.58	0/3454

There are no bond length outliers.

There are no bond angle outliers.

There are no chirality outliers.

There are no planarity outliers.

### 5.2 Too-close contacts [i](#)

In the following table, the Non-H and H(model) columns list the number of non-hydrogen atoms and hydrogen atoms in the chain respectively. The H(added) column lists the number of hydrogen atoms added and optimized by MolProbity. The Clashes column lists the number of clashes within the asymmetric unit, whereas Symm-Clashes lists symmetry-related clashes.

Mol	Chain	Non-H	H(model)	H(added)	Clashes	Symm-Clashes
1	A	2455	0	2385	8	0
2	B	28	0	25	0	0
3	A	72	0	42	0	0
4	A	1	0	0	0	0
5	A	12	16	24	0	0
6	A	15	24	24	0	0
7	A	86	0	0	1	0
All	All	2669	40	2500	8	0

The all-atom clashscore is defined as the number of clashes found per 1000 atoms (including hydrogen atoms). The all-atom clashscore for this structure is 2.

All (8) close contacts within the same asymmetric unit are listed below, sorted by their clash magnitude.

Atom-1	Atom-2	Interatomic distance (Å)	Clash overlap (Å)
1:A:1237:GLN:HE21	1:A:1237:GLN:H	1.19	0.87
1:A:1426:GLU:H	1:A:1426:GLU:CD	2.19	0.45
1:A:1336:MET:HG3	1:A:1421:THR:O	2.18	0.44
1:A:1306[A]:ILE:HD13	1:A:1454:VAL:HG21	2.00	0.44
1:A:1283:LYS:NZ	7:A:1601:HOH:O	2.15	0.42
1:A:1234:PHE:HB3	1:A:1239:LEU:HD11	2.04	0.40
1:A:1302:ASP:HB3	1:A:1305:GLN:HG3	2.02	0.40
1:A:1354:LYS:HD2	1:A:1355:PRO:HD2	2.04	0.40

There are no symmetry-related clashes.

### 5.3 Torsion angles [i](#)

#### 5.3.1 Protein backbone [i](#)

In the following table, the Percentiles column shows the percent Ramachandran outliers of the chain as a percentile score with respect to all X-ray entries followed by that with respect to entries of similar resolution.

The Analysed column shows the number of residues for which the backbone conformation was analysed, and the total number of residues.

Mol	Chain	Analysed	Favoured	Allowed	Outliers	Percentiles
1	A	293/299 (98%)	289 (99%)	4 (1%)	0	100 100

There are no Ramachandran outliers to report.

#### 5.3.2 Protein sidechains [i](#)

In the following table, the Percentiles column shows the percent sidechain outliers of the chain as a percentile score with respect to all X-ray entries followed by that with respect to entries of similar resolution.

The Analysed column shows the number of residues for which the sidechain conformation was analysed, and the total number of residues.

Mol	Chain	Analysed	Rotameric	Outliers	Percentiles
1	A	265/267 (99%)	257 (97%)	8 (3%)	41 33

All (8) residues with a non-rotameric sidechain are listed below:

Mol	Chain	Res	Type
1	A	1237	GLN
1	A	1271[A]	GLN
1	A	1271[B]	GLN
1	A	1324	TYR
1	A	1335	GLU
1	A	1354	LYS
1	A	1426	GLU
1	A	1429	LYS

Sometimes sidechains can be flipped to improve hydrogen bonding and reduce clashes. All (1) such sidechains are listed below:

Mol	Chain	Res	Type
1	A	1237	GLN

### 5.3.3 RNA [i](#)

There are no RNA molecules in this entry.

## 5.4 Non-standard residues in protein, DNA, RNA chains [i](#)

There are no non-standard protein/DNA/RNA residues in this entry.

## 5.5 Carbohydrates [i](#)

2 monosaccharides are modelled in this entry.

In the following table, the Counts columns list the number of bonds (or angles) for which Mogul statistics could be retrieved, the number of bonds (or angles) that are observed in the model and the number of bonds (or angles) that are defined in the Chemical Component Dictionary. The Link column lists molecule types, if any, to which the group is linked. The Z score for a bond length (or angle) is the number of standard deviations the observed value is removed from the expected value. A bond length (or angle) with  $|Z| > 2$  is considered an outlier worth inspection. RMSZ is the root-mean-square of all Z scores of the bond lengths (or angles).

Mol	Type	Chain	Res	Link	Bond lengths			Bond angles		
					Counts	RMSZ	$\# Z  > 2$	Counts	RMSZ	$\# Z  > 2$
2	NAG	B	1	2,1	14,14,15	0.31	0	17,19,21	0.50	0
2	NAG	B	2	2	14,14,15	0.30	0	17,19,21	0.73	1 (5%)

In the following table, the Chirals column lists the number of chiral outliers, the number of chiral centers analysed, the number of these observed in the model and the number defined in the

Chemical Component Dictionary. Similar counts are reported in the Torsion and Rings columns. '-' means no outliers of that kind were identified.

Mol	Type	Chain	Res	Link	Chirals	Torsions	Rings
2	NAG	B	1	2,1	-	0/6/23/26	0/1/1/1
2	NAG	B	2	2	-	2/6/23/26	0/1/1/1

There are no bond length outliers.

All (1) bond angle outliers are listed below:

Mol	Chain	Res	Type	Atoms	Z	Observed(°)	Ideal(°)
2	B	2	NAG	C1-O5-C5	2.02	114.92	112.19

There are no chirality outliers.

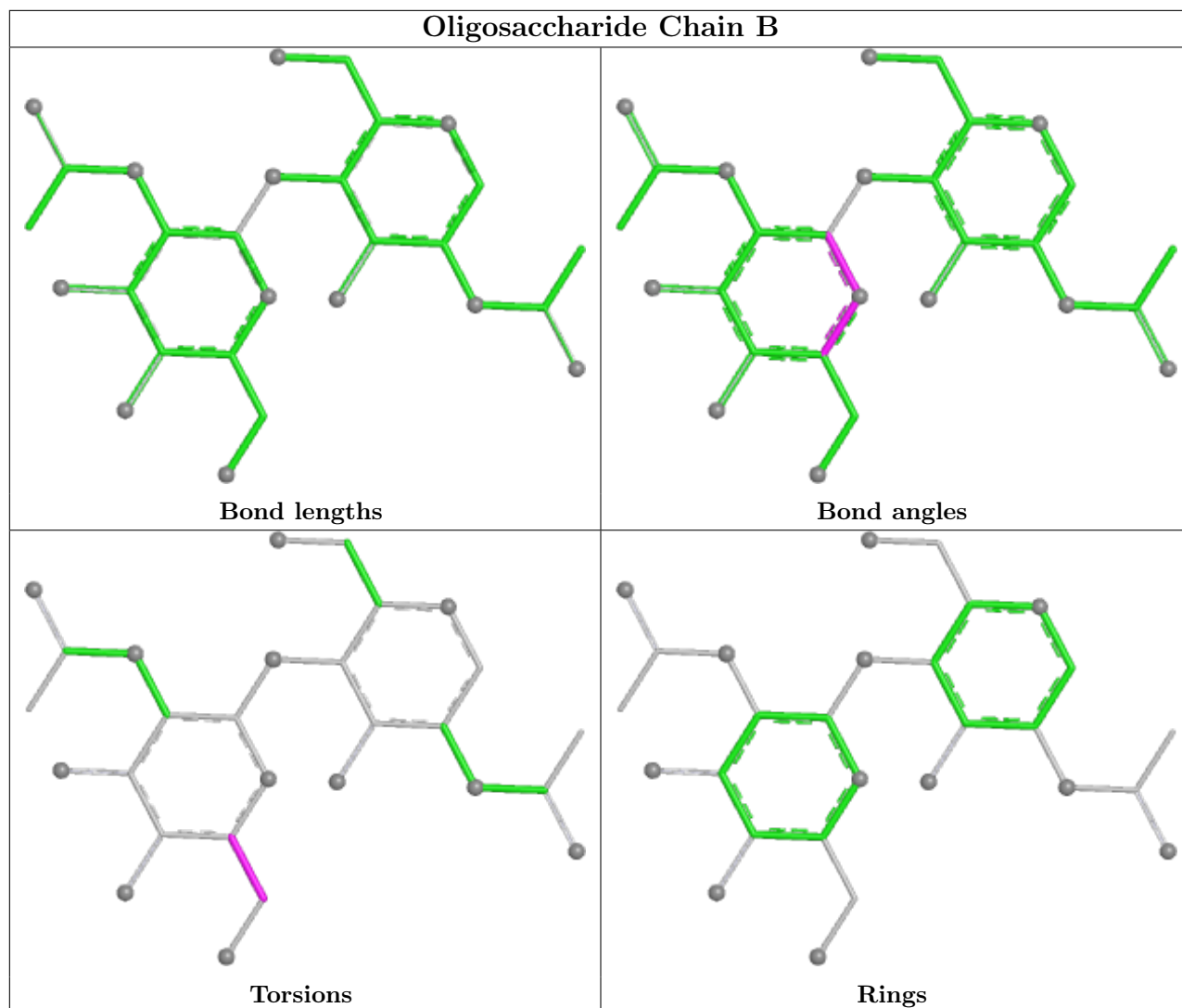
All (2) torsion outliers are listed below:

Mol	Chain	Res	Type	Atoms
2	B	2	NAG	O5-C5-C6-O6
2	B	2	NAG	C4-C5-C6-O6

There are no ring outliers.

No monomer is involved in short contacts.

The following is a two-dimensional graphical depiction of Mogul quality analysis of bond lengths, bond angles, torsion angles, and ring geometry for oligosaccharide.



## 5.6 Ligand geometry [i](#)

Of 9 ligands modelled in this entry, 1 is monoatomic - leaving 8 for Mogul analysis.

In the following table, the Counts columns list the number of bonds (or angles) for which Mogul statistics could be retrieved, the number of bonds (or angles) that are observed in the model and the number of bonds (or angles) that are defined in the Chemical Component Dictionary. The Link column lists molecule types, if any, to which the group is linked. The Z score for a bond length (or angle) is the number of standard deviations the observed value is removed from the expected value. A bond length (or angle) with  $|Z| > 2$  is considered an outlier worth inspection. RMSZ is the root-mean-square of all Z scores of the bond lengths (or angles).

Mol	Type	Chain	Res	Link	Bond lengths			Bond angles		
					Counts	RMSZ	$\# Z  > 2$	Counts	RMSZ	$\# Z  > 2$
6	PDO	A	1508	-	4,4,4	0.04	0	3,3,3	0.37	0
5	IPA	A	1503	-	3,3,3	0.69	0	3,3,3	0.47	0
6	PDO	A	1506	-	4,4,4	0.30	0	3,3,3	0.14	0

Mol	Type	Chain	Res	Link	Bond lengths			Bond angles		
					Counts	RMSZ	# Z  > 2	Counts	RMSZ	# Z  > 2
3	UPG	A	1501[A]	4	35,38,38	0.43	0	53,58,58	0.82	3 (5%)
5	IPA	A	1505	-	3,3,3	0.61	0	3,3,3	0.48	0
6	PDO	A	1507	-	4,4,4	0.14	0	3,3,3	0.28	0
3	UPG	A	1501[B]	4	35,38,38	0.44	0	53,58,58	0.85	3 (5%)
5	IPA	A	1504	-	3,3,3	0.67	0	3,3,3	0.52	0

In the following table, the Chirals column lists the number of chiral outliers, the number of chiral centers analysed, the number of these observed in the model and the number defined in the Chemical Component Dictionary. Similar counts are reported in the Torsion and Rings columns. '-' means no outliers of that kind were identified.

Mol	Type	Chain	Res	Link	Chirals	Torsions	Rings
6	PDO	A	1508	-	-	0/2/2/2	-
6	PDO	A	1507	-	-	0/2/2/2	-
6	PDO	A	1506	-	-	0/2/2/2	-
3	UPG	A	1501[A]	4	-	5/23/59/59	0/3/3/3
3	UPG	A	1501[B]	4	-	4/23/59/59	0/3/3/3

There are no bond length outliers.

All (6) bond angle outliers are listed below:

Mol	Chain	Res	Type	Atoms	Z	Observed(°)	Ideal(°)
3	A	1501[A]	UPG	PB-O3A-PA	-3.99	119.12	132.83
3	A	1501[B]	UPG	PB-O3A-PA	-3.15	122.02	132.83
3	A	1501[A]	UPG	PB-O3B-C1'	2.84	130.74	119.74
3	A	1501[B]	UPG	PB-O3B-C1'	2.72	130.26	119.74
3	A	1501[B]	UPG	O3A-PB-O3B	-2.31	97.82	102.48
3	A	1501[A]	UPG	O5'-C1'-O3B	-2.09	108.64	111.36

There are no chirality outliers.

All (9) torsion outliers are listed below:

Mol	Chain	Res	Type	Atoms
3	A	1501[B]	UPG	O5'-C1'-O3B-PB
3	A	1501[A]	UPG	O5'-C5'-C6'-O6'
3	A	1501[A]	UPG	O5'-C1'-O3B-PB
3	A	1501[A]	UPG	C4C-C5C-O5C-PA
3	A	1501[B]	UPG	PB-O3A-PA-O2A
3	A	1501[B]	UPG	PA-O3A-PB-O1B
3	A	1501[A]	UPG	PB-O3A-PA-O2A

*Continued on next page...*

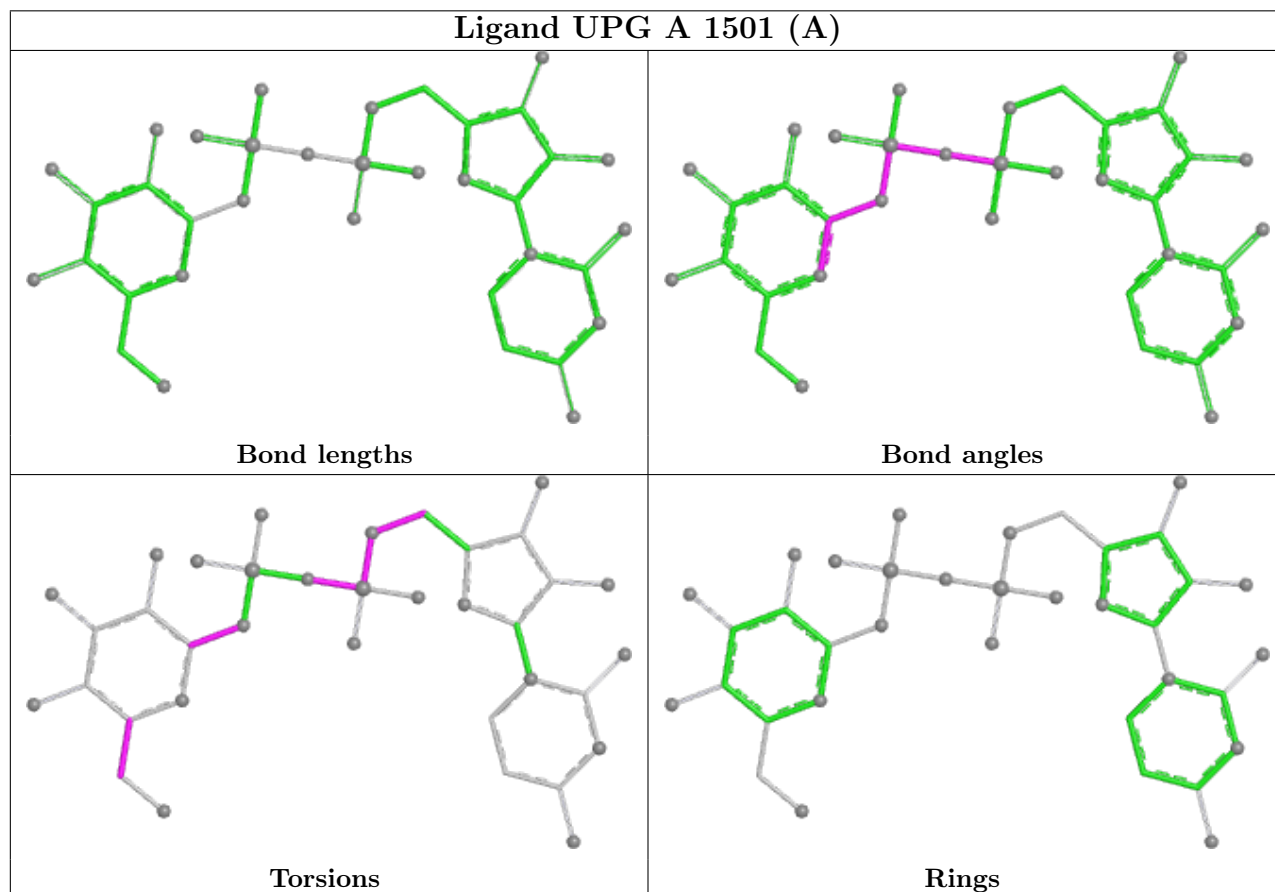
Continued from previous page...

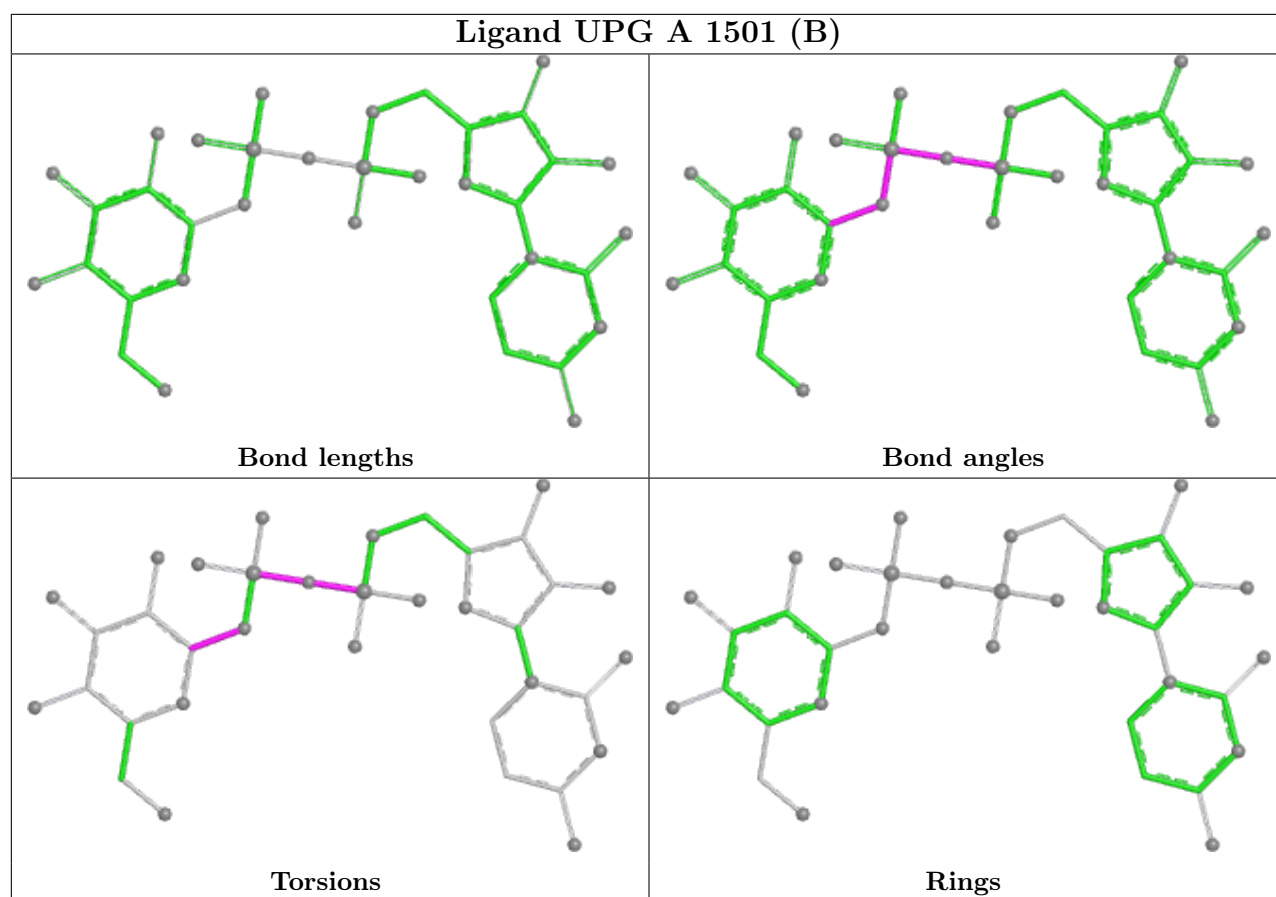
Mol	Chain	Res	Type	Atoms
3	A	1501[B]	UPG	PA-O3A-PB-O2B
3	A	1501[A]	UPG	C5C-O5C-PA-O1A

There are no ring outliers.

No monomer is involved in short contacts.

The following is a two-dimensional graphical depiction of Mogul quality analysis of bond lengths, bond angles, torsion angles, and ring geometry for all instances of the Ligand of Interest. In addition, ligands with molecular weight > 250 and outliers as shown on the validation Tables will also be included. For torsion angles, if less than 5% of the Mogul distribution of torsion angles is within 10 degrees of the torsion angle in question, then that torsion angle is considered an outlier. Any bond that is central to one or more torsion angles identified as an outlier by Mogul will be highlighted in the graph. For rings, the root-mean-square deviation (RMSD) between the ring in question and similar rings identified by Mogul is calculated over all ring torsion angles. If the average RMSD is greater than 60 degrees and the minimal RMSD between the ring in question and any Mogul-identified rings is also greater than 60 degrees, then that ring is considered an outlier. The outliers are highlighted in purple. The color gray indicates Mogul did not find sufficient equivalents in the CSD to analyse the geometry.





## 5.7 Other polymers [i](#)

There are no such residues in this entry.

## 5.8 Polymer linkage issues [i](#)

There are no chain breaks in this entry.



## 6 Fit of model and data [i](#)

### 6.1 Protein, DNA and RNA chains [i](#)

In the following table, the column labelled ‘#RSRZ> 2’ contains the number (and percentage) of RSRZ outliers, followed by percent RSRZ outliers for the chain as percentile scores relative to all X-ray entries and entries of similar resolution. The OWAB column contains the minimum, median, 95<sup>th</sup> percentile and maximum values of the occupancy-weighted average B-factor per residue. The column labelled ‘Q< 0.9’ lists the number of (and percentage) of residues with an average occupancy less than 0.9.

Mol	Chain	Analysed	<RSRZ>	#RSRZ>2	OWAB(Å <sup>2</sup> )	Q<0.9
1	A	286/299 (95%)	0.73	40 (13%) <b>2</b>   <b>2</b>	32, 46, 71, 106	0

All (40) RSRZ outliers are listed below:

Mol	Chain	Res	Type	RSRZ
1	A	1475	THR	10.0
1	A	1476	LYS	8.5
1	A	1273[A]	LYS	5.5
1	A	1191	SER	5.3
1	A	1262	THR	5.1
1	A	1472	ARG	5.0
1	A	1195	THR	5.0
1	A	1474	GLY	4.9
1	A	1389	PRO	4.8
1	A	1196	GLU	4.6
1	A	1387	ALA	4.4
1	A	1473	GLU	4.3
1	A	1390	ASN	4.2
1	A	1267[A]	HIS	4.1
1	A	1334	VAL	3.9
1	A	1215	LEU	3.8
1	A	1443	LYS	3.7
1	A	1192	VAL	3.6
1	A	1441	MET	3.2
1	A	1469	ARG	3.2
1	A	1284	ILE	3.1
1	A	1219	MET	3.0
1	A	1202	ILE	2.8
1	A	1346	TYR	2.8
1	A	1470	ARG	2.7
1	A	1222	VAL	2.7
1	A	1367[A]	GLN	2.7

*Continued on next page...*

*Continued from previous page...*

Mol	Chain	Res	Type	RSRZ
1	A	1232	PHE	2.6
1	A	1301	VAL	2.5
1	A	1440	PRO	2.4
1	A	1344	THR	2.4
1	A	1274	GLU	2.3
1	A	1306[A]	ILE	2.2
1	A	1462	GLU	2.1
1	A	1217	ILE	2.1
1	A	1299	ILE	2.1
1	A	1363	VAL	2.1
1	A	1218	MET	2.1
1	A	1307	VAL	2.1
1	A	1216	ASN	2.0

## 6.2 Non-standard residues in protein, DNA, RNA chains [i](#)

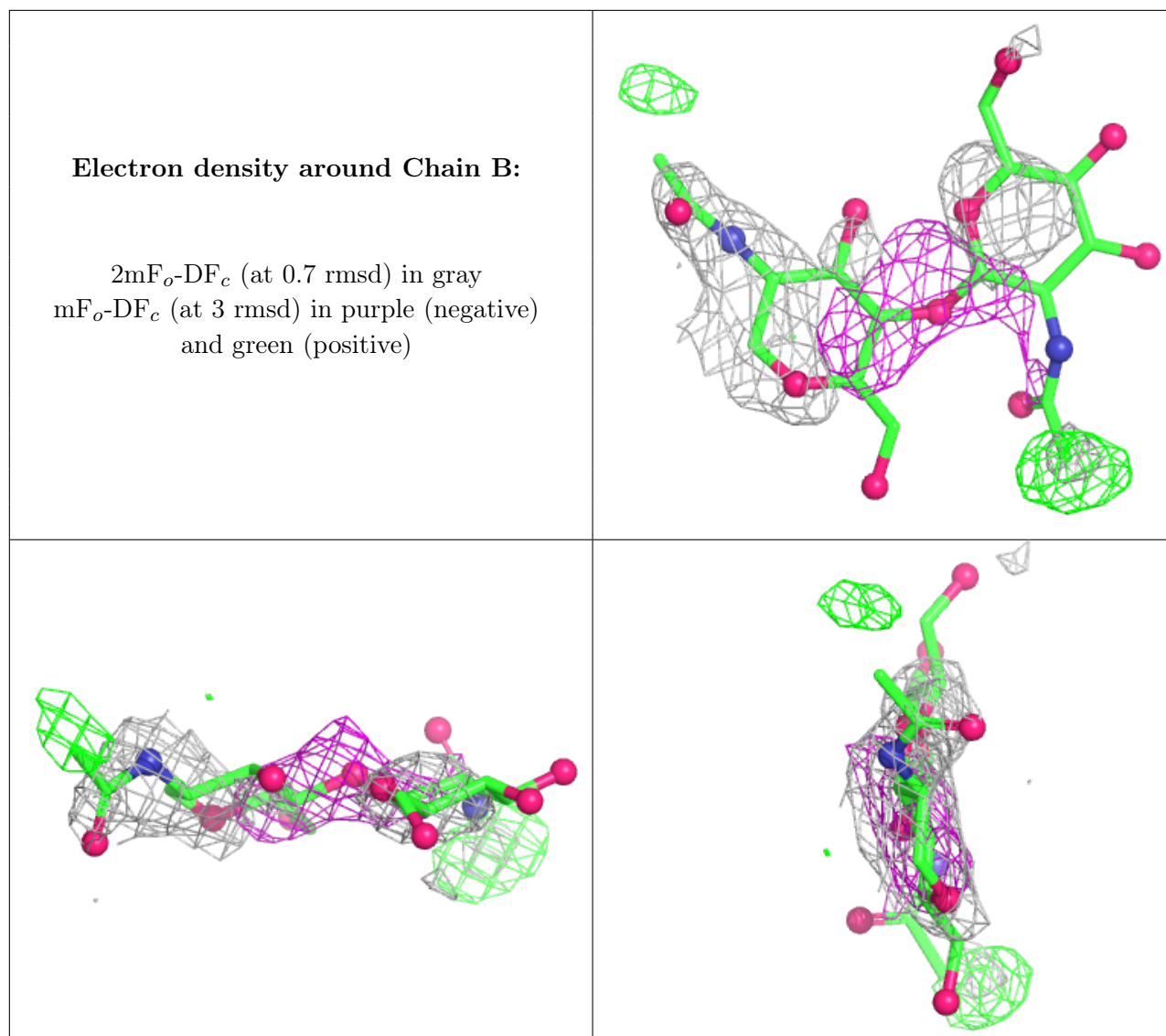
There are no non-standard protein/DNA/RNA residues in this entry.

## 6.3 Carbohydrates [i](#)

In the following table, the Atoms column lists the number of modelled atoms in the group and the number defined in the chemical component dictionary. The B-factors column lists the minimum, median, 95<sup>th</sup> percentile and maximum values of B factors of atoms in the group. The column labelled 'Q< 0.9' lists the number of atoms with occupancy less than 0.9.

Mol	Type	Chain	Res	Atoms	RSCC	RSR	B-factors( $\text{\AA}^2$ )	Q<0.9
2	NAG	B	1	14/15	0.45	0.63	82,85,87,89	0
2	NAG	B	2	14/15	0.49	0.71	91,92,93,94	0

The following is a graphical depiction of the model fit to experimental electron density for oligosaccharide. Each fit is shown from different orientation to approximate a three-dimensional view.



## 6.4 Ligands [i](#)

In the following table, the Atoms column lists the number of modelled atoms in the group and the number defined in the chemical component dictionary. The B-factors column lists the minimum, median, 95<sup>th</sup> percentile and maximum values of B factors of atoms in the group. The column labelled 'Q< 0.9' lists the number of atoms with occupancy less than 0.9.

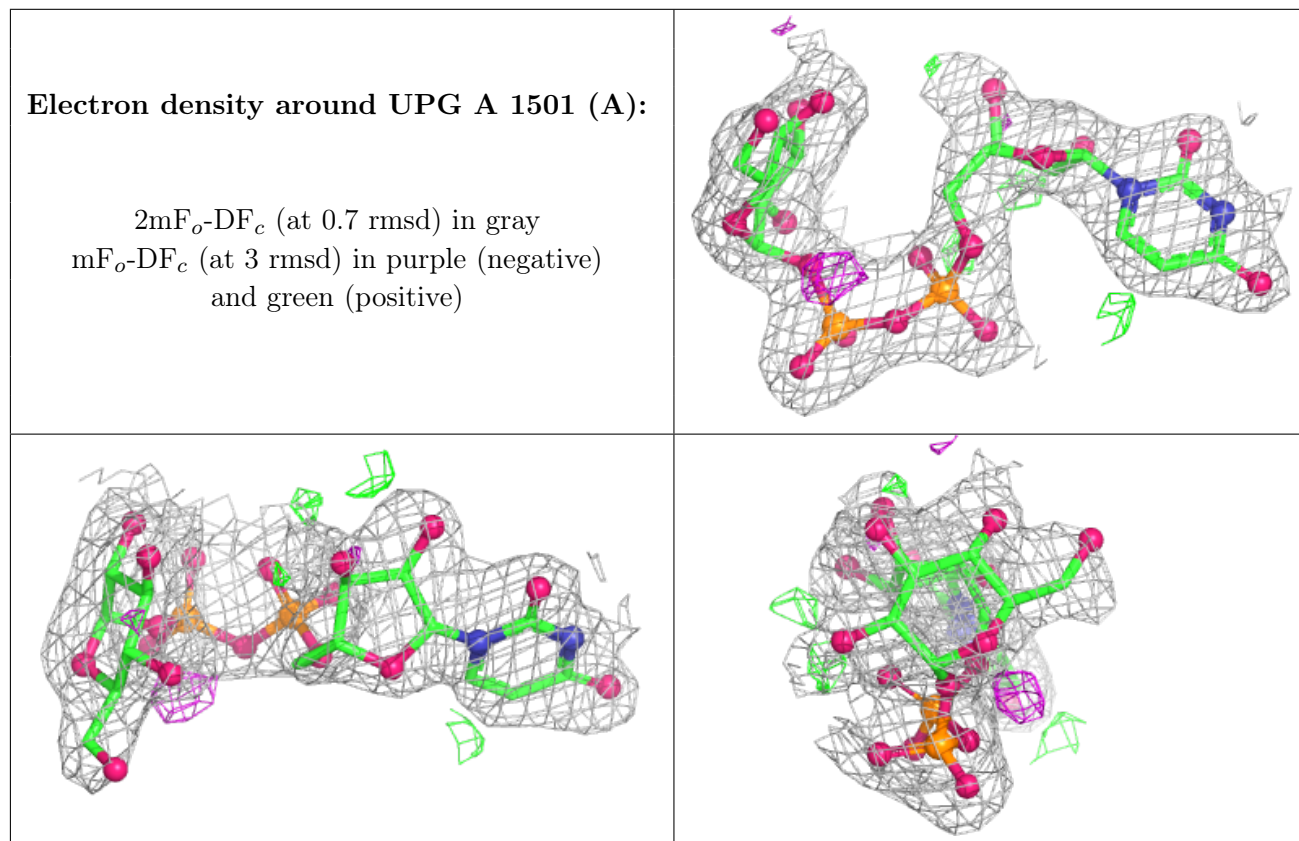
Mol	Type	Chain	Res	Atoms	RSCC	RSR	B-factors(Å <sup>2</sup> )	Q<0.9
6	PDO	A	1508	5/5	0.69	0.26	106,106,106,106	8
6	PDO	A	1506	5/5	0.75	0.35	70,71,71,71	8
6	PDO	A	1507	5/5	0.86	0.14	78,78,79,79	8
5	IPA	A	1503	4/4	0.91	0.20	90,90,90,90	0
5	IPA	A	1505	4/4	0.92	0.15	72,72,73,73	8
5	IPA	A	1504	4/4	0.92	0.20	78,78,78,78	8
3	UPG	A	1501[A]	36/36	0.93	0.13	98,101,103,103	36

*Continued on next page...*

*Continued from previous page...*

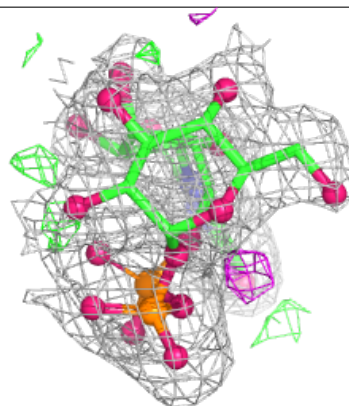
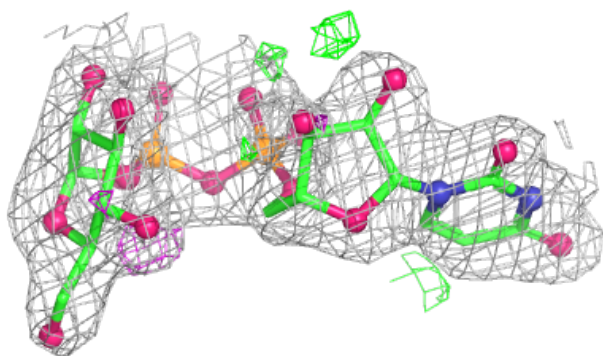
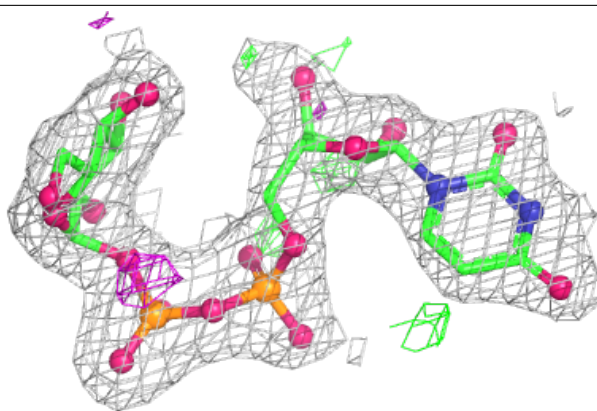
Mol	Type	Chain	Res	Atoms	RSCC	RSR	B-factors(Å <sup>2</sup> )	Q<0.9
3	UPG	A	1501[B]	36/36	0.93	0.13	31,38,44,45	36
4	CA	A	1502	1/1	1.00	0.09	38,38,38,38	0

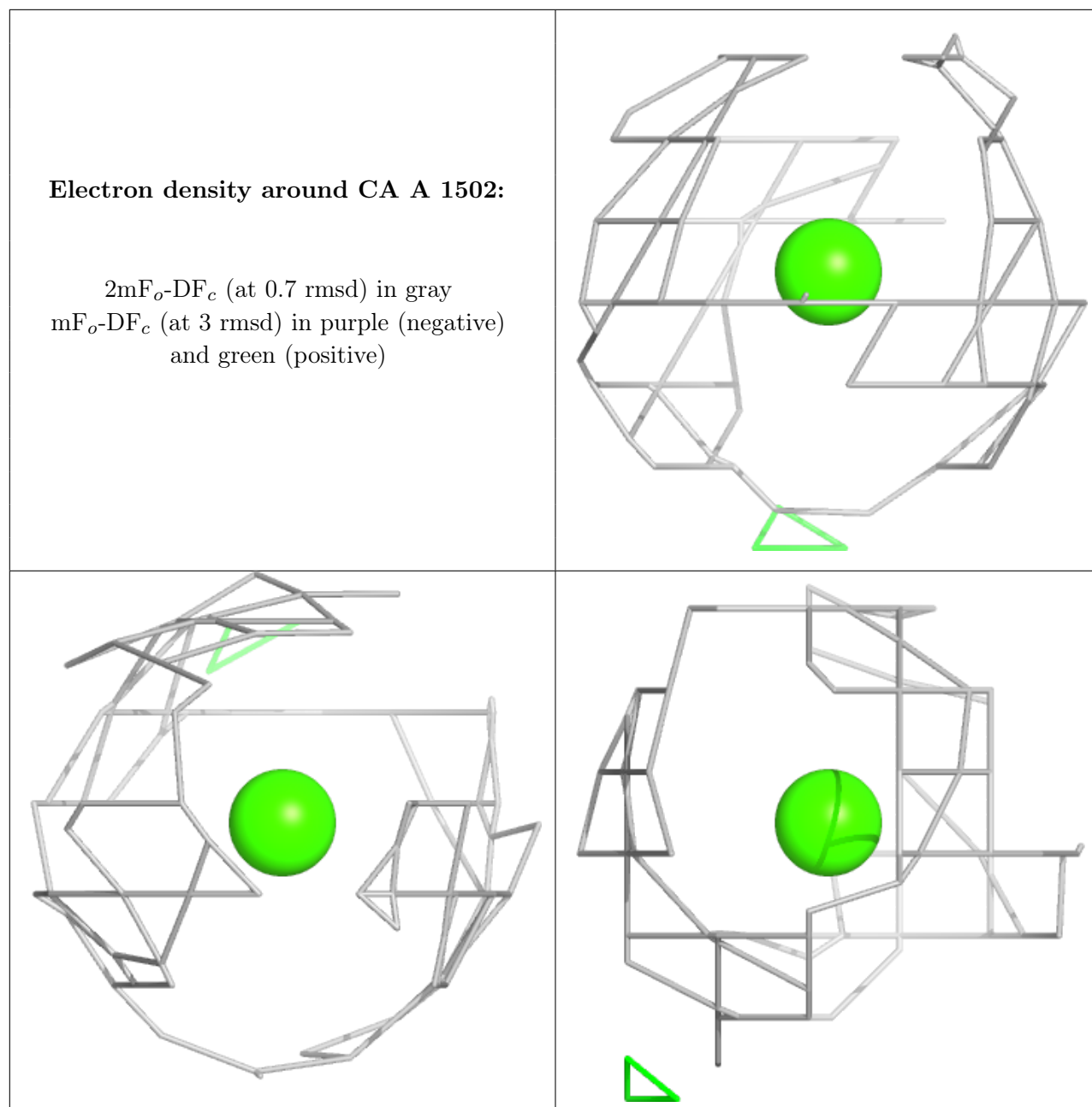
The following is a graphical depiction of the model fit to experimental electron density of all instances of the Ligand of Interest. In addition, ligands with molecular weight > 250 and outliers as shown on the geometry validation Tables will also be included. Each fit is shown from different orientation to approximate a three-dimensional view.



**Electron density around UPG A 1501 (B):**

$2mF_o-DF_c$  (at 0.7 rmsd) in gray  
 $mF_o-DF_c$  (at 3 rmsd) in purple (negative)  
and green (positive)





## 6.5 Other polymers [i](#)

There are no such residues in this entry.