



# Full wwPDB X-ray Structure Validation Report ⓘ

Nov 14, 2023 – 02:52 PM JST

PDB ID : 5ZI7  
Title : Crystal structure of Legionella pneumophila aminopeptidase A in complex with glutamic acid  
Authors : Marapaka, A.K.; Addlagatta, A.  
Deposited on : 2018-03-14  
Resolution : 1.86 Å(reported)

This is a Full wwPDB X-ray Structure Validation Report for a publicly released PDB entry.

We welcome your comments at [validation@mail.wwpdb.org](mailto:validation@mail.wwpdb.org)

A user guide is available at

<https://www.wwpdb.org/validation/2017/XrayValidationReportHelp>

with specific help available everywhere you see the ⓘ symbol.

The types of validation reports are described at

<http://www.wwpdb.org/validation/2017/FAQs#types>.

---

The following versions of software and data (see [references ⓘ](#)) were used in the production of this report:

MolProbity : 4.02b-467  
Mogul : 1.8.5 (274361), CSD as541be (2020)  
Xtriage (Phenix) : 1.13  
EDS : 2.36  
Percentile statistics : 20191225.v01 (using entries in the PDB archive December 25th 2019)  
Refmac : 5.8.0158  
CCP4 : 7.0.044 (Gargrove)  
Ideal geometry (proteins) : Engh & Huber (2001)  
Ideal geometry (DNA, RNA) : Parkinson et al. (1996)  
Validation Pipeline (wwPDB-VP) : 2.36

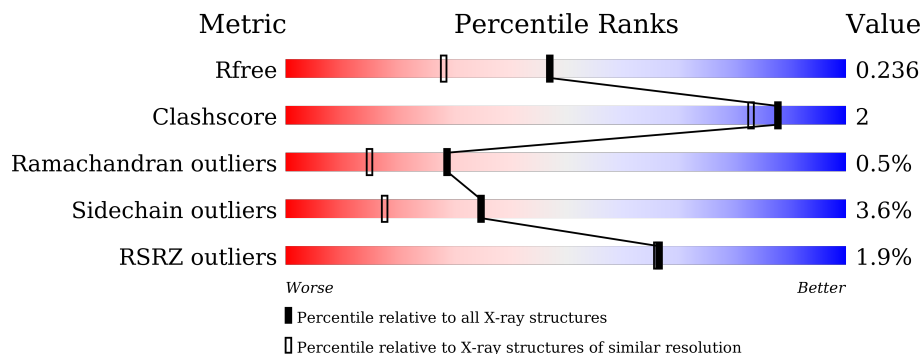
# 1 Overall quality at a glance

The following experimental techniques were used to determine the structure:

*X-RAY DIFFRACTION*

The reported resolution of this entry is 1.86 Å.

Percentile scores (ranging between 0-100) for global validation metrics of the entry are shown in the following graphic. The table shows the number of entries on which the scores are based.



Metric	Whole archive (#Entries)	Similar resolution (#Entries, resolution range(Å))
$R_{free}$	130704	2469 (1.86-1.86)
Clashscore	141614	2625 (1.86-1.86)
Ramachandran outliers	138981	2592 (1.86-1.86)
Sidechain outliers	138945	2592 (1.86-1.86)
RSRZ outliers	127900	2436 (1.86-1.86)

The table below summarises the geometric issues observed across the polymeric chains and their fit to the electron density. The red, orange, yellow and green segments of the lower bar indicate the fraction of residues that contain outliers for  $\geq 3$ , 2, 1 and 0 types of geometric quality criteria respectively. A grey segment represents the fraction of residues that are not modelled. The numeric value for each fraction is indicated below the corresponding segment, with a dot representing fractions  $\leq 5\%$ . The upper red bar (where present) indicates the fraction of residues that have poor fit to the electron density. The numeric value is given above the bar.

Mol	Chain	Length	Quality of chain
1	A	921	
1	B	921	

## 2 Entry composition [i](#)

There are 3 unique types of molecules in this entry. The entry contains 14646 atoms, of which 0 are hydrogens and 0 are deuteriums.

In the tables below, the ZeroOcc column contains the number of atoms modelled with zero occupancy, the AltConf column contains the number of residues with at least one atom in alternate conformation and the Trace column contains the number of residues modelled with at most 2 atoms.

- Molecule 1 is a protein called Aminopeptidase N.

Mol	Chain	Residues	Atoms					ZeroOcc	AltConf	Trace
			Total	C	N	O	S			
1	A	850	6873	4407	1121	1318	27	0	11	0
1	B	850	6850	4392	1115	1316	27	0	9	0

There are 42 discrepancies between the modelled and reference sequences:

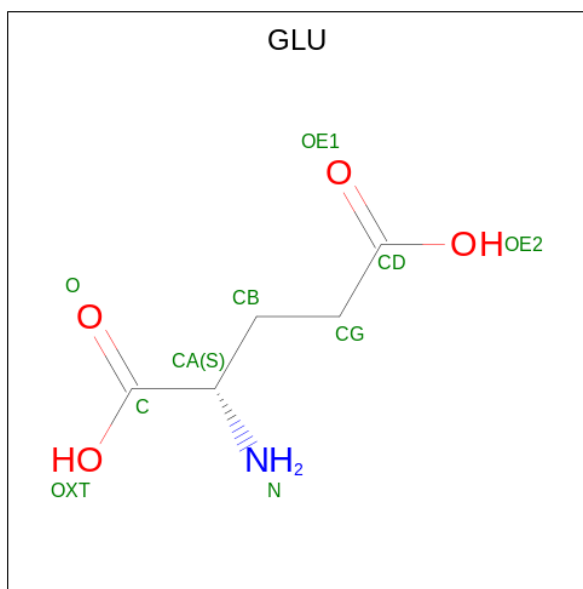
Chain	Residue	Modelled	Actual	Comment	Reference
A	-20	MET	-	initiating methionine	UNP Q5ZVE3
A	-19	GLY	-	expression tag	UNP Q5ZVE3
A	-18	SER	-	expression tag	UNP Q5ZVE3
A	-17	SER	-	expression tag	UNP Q5ZVE3
A	-16	HIS	-	expression tag	UNP Q5ZVE3
A	-15	HIS	-	expression tag	UNP Q5ZVE3
A	-14	HIS	-	expression tag	UNP Q5ZVE3
A	-13	HIS	-	expression tag	UNP Q5ZVE3
A	-12	HIS	-	expression tag	UNP Q5ZVE3
A	-11	HIS	-	expression tag	UNP Q5ZVE3
A	-10	SER	-	expression tag	UNP Q5ZVE3
A	-9	SER	-	expression tag	UNP Q5ZVE3
A	-8	GLY	-	expression tag	UNP Q5ZVE3
A	-7	LEU	-	expression tag	UNP Q5ZVE3
A	-6	VAL	-	expression tag	UNP Q5ZVE3
A	-5	PRO	-	expression tag	UNP Q5ZVE3
A	-4	ARG	-	expression tag	UNP Q5ZVE3
A	-3	GLY	-	expression tag	UNP Q5ZVE3
A	-2	SER	-	expression tag	UNP Q5ZVE3
A	-1	HIS	-	expression tag	UNP Q5ZVE3
A	0	MET	-	expression tag	UNP Q5ZVE3
B	-20	MET	-	initiating methionine	UNP Q5ZVE3
B	-19	GLY	-	expression tag	UNP Q5ZVE3
B	-18	SER	-	expression tag	UNP Q5ZVE3
B	-17	SER	-	expression tag	UNP Q5ZVE3

*Continued on next page...*

Continued from previous page...

Chain	Residue	Modelled	Actual	Comment	Reference
B	-16	HIS	-	expression tag	UNP Q5ZVE3
B	-15	HIS	-	expression tag	UNP Q5ZVE3
B	-14	HIS	-	expression tag	UNP Q5ZVE3
B	-13	HIS	-	expression tag	UNP Q5ZVE3
B	-12	HIS	-	expression tag	UNP Q5ZVE3
B	-11	HIS	-	expression tag	UNP Q5ZVE3
B	-10	SER	-	expression tag	UNP Q5ZVE3
B	-9	SER	-	expression tag	UNP Q5ZVE3
B	-8	GLY	-	expression tag	UNP Q5ZVE3
B	-7	LEU	-	expression tag	UNP Q5ZVE3
B	-6	VAL	-	expression tag	UNP Q5ZVE3
B	-5	PRO	-	expression tag	UNP Q5ZVE3
B	-4	ARG	-	expression tag	UNP Q5ZVE3
B	-3	GLY	-	expression tag	UNP Q5ZVE3
B	-2	SER	-	expression tag	UNP Q5ZVE3
B	-1	HIS	-	expression tag	UNP Q5ZVE3
B	0	MET	-	expression tag	UNP Q5ZVE3

- Molecule 2 is GLUTAMIC ACID (three-letter code: GLU) (formula: C<sub>5</sub>H<sub>9</sub>NO<sub>4</sub>).



Mol	Chain	Residues	Atoms				ZeroOcc	AltConf
			Total	C	N	O		
2	A	1	Total	C	N	O	0	0
			10	5	1	4		
2	B	1	Total	C	N	O	0	0
			10	5	1	4		

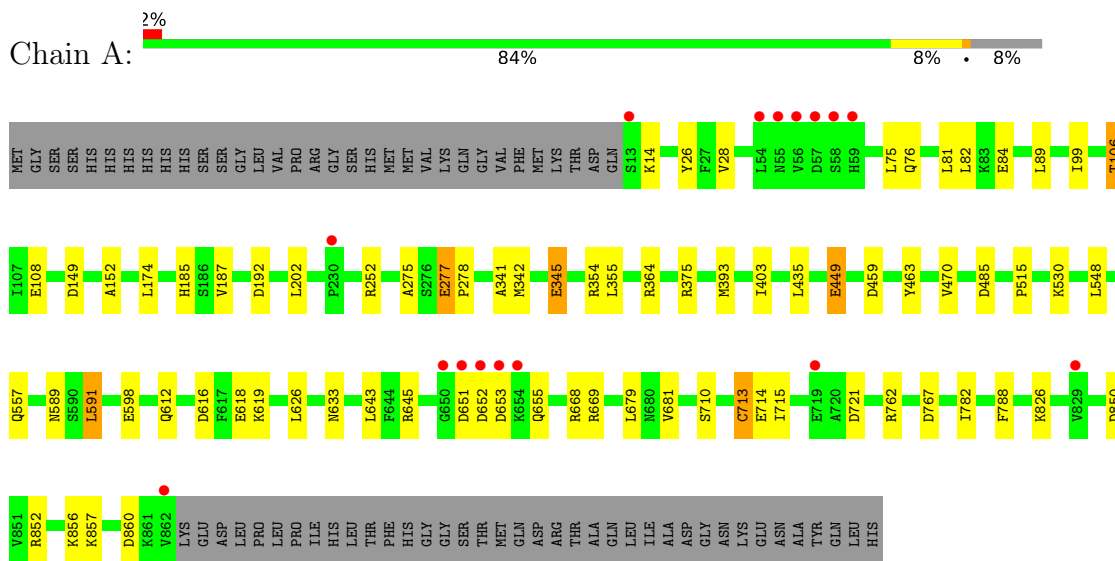
- Molecule 3 is water.

Mol	Chain	Residues	Atoms		ZeroOcc	AltConf
3	A	459	Total 459	O 459	0	0
3	B	444	Total 444	O 444	0	0

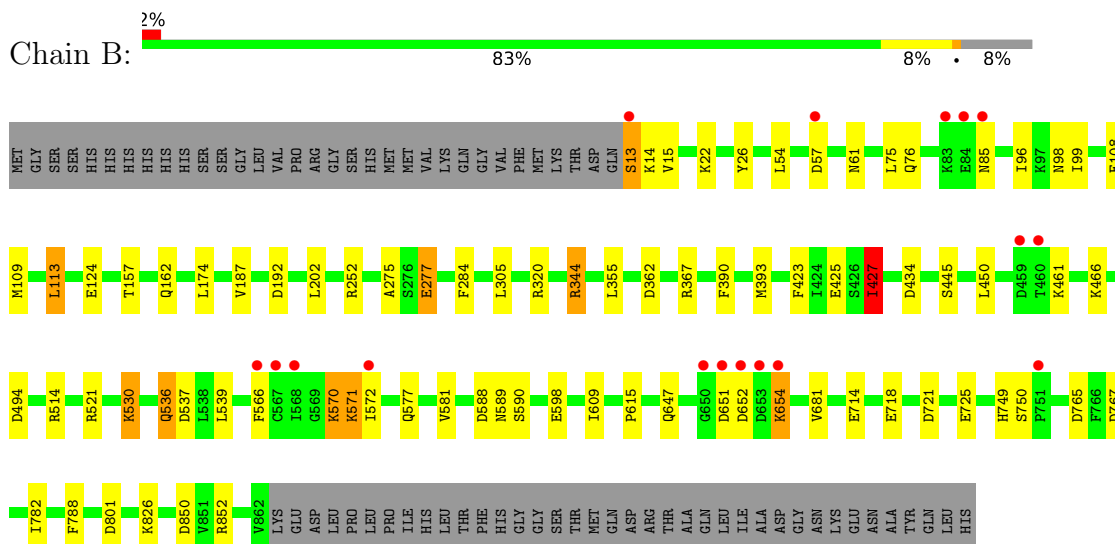
### 3 Residue-property plots i

These plots are drawn for all protein, RNA, DNA and oligosaccharide chains in the entry. The first graphic for a chain summarises the proportions of the various outlier classes displayed in the second graphic. The second graphic shows the sequence view annotated by issues in geometry and electron density. Residues are color-coded according to the number of geometric quality criteria for which they contain at least one outlier: green = 0, yellow = 1, orange = 2 and red = 3 or more. A red dot above a residue indicates a poor fit to the electron density ( $RSRZ > 2$ ). Stretches of 2 or more consecutive residues without any outlier are shown as a green connector. Residues present in the sample, but not in the model, are shown in grey.

- Molecule 1: Aminopeptidase N



- Molecule 1: Aminopeptidase N



## 4 Data and refinement statistics

Property	Value	Source
Space group	P 1 21 1	Depositor
Cell constants a, b, c, $\alpha$ , $\beta$ , $\gamma$	71.53Å 103.75Å 112.69Å 90.00° 90.29° 90.00°	Depositor
Resolution (Å)	34.14 – 1.86 34.14 – 1.86	Depositor EDS
% Data completeness (in resolution range)	98.8 (34.14-1.86) 98.8 (34.14-1.86)	Depositor EDS
$R_{merge}$	0.05	Depositor
$R_{sym}$	(Not available)	Depositor
$\langle I/\sigma(I) \rangle$ <sup>1</sup>	2.66 (at 1.85Å)	Xtrriage
Refinement program	REFMAC 5.8.0135	Depositor
R, $R_{free}$	0.179 , 0.232 0.188 , 0.236	Depositor DCC
$R_{free}$ test set	6926 reflections (5.07%)	wwPDB-VP
Wilson B-factor (Å <sup>2</sup> )	27.9	Xtrriage
Anisotropy	0.022	Xtrriage
Bulk solvent $k_{sol}$ (e/Å <sup>3</sup> ), $B_{sol}$ (Å <sup>2</sup> )	0.33 , 33.7	EDS
L-test for twinning <sup>2</sup>	$\langle  L  \rangle = 0.51$ , $\langle L^2 \rangle = 0.35$	Xtrriage
Estimated twinning fraction	0.012 for h,-k,-l	Xtrriage
$F_o, F_c$ correlation	0.96	EDS
Total number of atoms	14646	wwPDB-VP
Average B, all atoms (Å <sup>2</sup> )	31.0	wwPDB-VP

Xtrriage's analysis on translational NCS is as follows: *The largest off-origin peak in the Patterson function is 3.55% of the height of the origin peak. No significant pseudotranslation is detected.*

<sup>1</sup>Intensities estimated from amplitudes.

<sup>2</sup>Theoretical values of  $\langle |L| \rangle$ ,  $\langle L^2 \rangle$  for acentric reflections are 0.5, 0.333 respectively for untwinned datasets, and 0.375, 0.2 for perfectly twinned datasets.

## 5 Model quality i

### 5.1 Standard geometry i

The Z score for a bond length (or angle) is the number of standard deviations the observed value is removed from the expected value. A bond length (or angle) with  $|Z| > 5$  is considered an outlier worth inspection. RMSZ is the root-mean-square of all Z scores of the bond lengths (or angles).

Mol	Chain	Bond lengths		Bond angles	
		RMSZ	# Z  >5	RMSZ	# Z  >5
1	A	0.93	2/7042 (0.0%)	0.97	23/9532 (0.2%)
1	B	0.92	1/7013 (0.0%)	0.95	17/9496 (0.2%)
All	All	0.93	3/14055 (0.0%)	0.96	40/19028 (0.2%)

Chiral center outliers are detected by calculating the chiral volume of a chiral center and verifying if the center is modelled as a planar moiety or with the opposite hand. A planarity outlier is detected by checking planarity of atoms in a peptide group, atoms in a mainchain group or atoms of a sidechain that are expected to be planar.

Mol	Chain	#Chirality outliers	#Planarity outliers
1	A	0	1
1	B	0	2
All	All	0	3

All (3) bond length outliers are listed below:

Mol	Chain	Res	Type	Atoms	Z	Observed(Å)	Ideal(Å)
1	A	713	CYS	CB-SG	-6.02	1.72	1.82
1	B	124	GLU	CD-OE2	5.62	1.31	1.25
1	A	345	GLU	CD-OE2	-5.53	1.19	1.25

All (40) bond angle outliers are listed below:

Mol	Chain	Res	Type	Atoms	Z	Observed(°)	Ideal(°)
1	B	344	ARG	NE-CZ-NH2	-11.50	114.55	120.30
1	A	252	ARG	NE-CZ-NH2	8.59	124.60	120.30
1	B	344	ARG	NE-CZ-NH1	8.39	124.49	120.30
1	A	762	ARG	NE-CZ-NH2	-8.22	116.19	120.30
1	A	485	ASP	CB-CG-OD1	7.47	125.03	118.30
1	A	354	ARG	NE-CZ-NH1	6.95	123.78	120.30
1	A	626	LEU	CA-CB-CG	6.71	130.73	115.30
1	A	762	ARG	NE-CZ-NH1	6.60	123.60	120.30
1	B	367	ARG	NE-CZ-NH1	6.58	123.59	120.30

*Continued on next page...*



Continued from previous page...

Mol	Chain	Res	Type	Atoms	Z	Observed(°)	Ideal(°)
1	A	852	ARG	NE-CZ-NH2	-6.57	117.02	120.30
1	B	362	ASP	CB-CG-OD1	6.51	124.16	118.30
1	A	668	ARG	NE-CZ-NH2	6.27	123.44	120.30
1	A	485	ASP	CB-CG-OD2	-6.10	112.81	118.30
1	A	375	ARG	NE-CZ-NH1	6.09	123.35	120.30
1	A	192	ASP	CB-CG-OD1	5.99	123.69	118.30
1	B	427	ILE	CG1-CB-CG2	-5.92	98.38	111.40
1	B	852	ARG	NE-CZ-NH2	-5.86	117.37	120.30
1	A	616	ASP	CB-CG-OD2	-5.75	113.12	118.30
1	B	521	ARG	NE-CZ-NH2	-5.71	117.44	120.30
1	B	767	ASP	CB-CG-OD1	5.69	123.42	118.30
1	A	852	ARG	NE-CZ-NH1	5.69	123.14	120.30
1	A	767	ASP	CB-CG-OD1	5.67	123.40	118.30
1	B	113	LEU	CB-CG-CD1	5.62	120.56	111.00
1	A	354	ARG	NE-CZ-NH2	-5.61	117.50	120.30
1	B	252	ARG	NE-CZ-NH2	5.51	123.06	120.30
1	A	375	ARG	NE-CZ-NH2	-5.50	117.55	120.30
1	B	801	ASP	CB-CG-OD1	5.43	123.19	118.30
1	B	320	ARG	NE-CZ-NH2	-5.40	117.60	120.30
1	B	514	ARG	NE-CZ-NH1	5.33	122.96	120.30
1	A	860	ASP	CB-CG-OD2	-5.29	113.54	118.30
1	B	530	LYS	CB-CA-C	5.22	120.84	110.40
1	A	616	ASP	CB-CG-OD1	5.21	122.99	118.30
1	A	860	ASP	CB-CG-OD1	5.21	122.98	118.30
1	A	149	ASP	CB-CG-OD1	5.20	122.98	118.30
1	A	393	MET	CG-SD-CE	5.19	108.51	100.20
1	B	434	ASP	CB-CG-OD1	5.12	122.91	118.30
1	B	494	ASP	CB-CG-OD1	5.08	122.87	118.30
1	B	537	ASP	CB-CG-OD2	-5.07	113.74	118.30
1	A	669[A]	ARG	NE-CZ-NH1	5.01	122.81	120.30
1	A	669[B]	ARG	NE-CZ-NH1	5.01	122.81	120.30

There are no chirality outliers.

All (3) planarity outliers are listed below:

Mol	Chain	Res	Type	Group
1	A	651	ASP	Peptide
1	B	284	PHE	Peptide
1	B	651	ASP	Peptide

## 5.2 Too-close contacts [i](#)

In the following table, the Non-H and H(model) columns list the number of non-hydrogen atoms and hydrogen atoms in the chain respectively. The H(added) column lists the number of hydrogen atoms added and optimized by MolProbity. The Clashes column lists the number of clashes within the asymmetric unit, whereas Symm-Clashes lists symmetry-related clashes.

Mol	Chain	Non-H	H(model)	H(added)	Clashes	Symm-Clashes
1	A	6873	0	6869	25	0
1	B	6850	0	6838	29	0
2	A	10	0	5	0	0
2	B	10	0	5	1	0
3	A	459	0	0	2	0
3	B	444	0	0	7	0
All	All	14646	0	13717	54	0

The all-atom clashscore is defined as the number of clashes found per 1000 atoms (including hydrogen atoms). The all-atom clashscore for this structure is 2.

All (54) close contacts within the same asymmetric unit are listed below, sorted by their clash magnitude.

Atom-1	Atom-2	Interatomic distance (Å)	Clash overlap (Å)
1:A:106:THR:HG23	1:A:108[B]:GLU:OE2	1.73	0.87
1:B:75:LEU:HD21	1:B:96:ILE:HD12	1.69	0.74
1:B:174:LEU:CD1	1:B:187:VAL:HG13	2.19	0.71
1:A:612:GLN:O	1:A:826:LYS:NZ	2.29	0.65
1:B:566:PHE:HB2	1:B:572:ILE:CG1	2.27	0.64
1:B:566:PHE:HB2	1:B:572:ILE:HG13	1.80	0.63
1:B:13:SER:HB3	1:B:15:VAL:HG23	1.81	0.62
1:A:557:GLN:HG3	3:A:1510:HOH:O	1.99	0.61
1:A:106:THR:CG2	1:A:108[B]:GLU:OE2	2.48	0.61
1:A:174:LEU:CD1	1:A:187:VAL:HG13	2.33	0.59
1:B:588:ASP:C	3:B:1110:HOH:O	2.44	0.56
1:B:782:ILE:HA	1:B:788:PHE:HB2	1.89	0.55
1:B:61:ASN:HB3	3:B:1265:HOH:O	2.09	0.53
1:A:782:ILE:HA	1:A:788:PHE:HB2	1.91	0.51
1:B:98:ASN:HA	3:B:1265:HOH:O	2.10	0.51
1:A:548:LEU:HD22	1:A:591:LEU:HD11	1.93	0.50
1:B:26:TYR:CZ	1:B:99:ILE:HD11	2.47	0.50
1:B:539:LEU:HB3	1:B:581:VAL:HG21	1.93	0.50
1:B:76:GLN:HB2	1:B:108[B]:GLU:HB2	1.95	0.49
1:A:679:LEU:HD21	1:A:715:ILE:HD11	1.95	0.49
1:A:342:MET:HE1	1:A:403:ILE:HD11	1.94	0.48

*Continued on next page...*

Continued from previous page...

Atom-1	Atom-2	Interatomic distance (Å)	Clash overlap (Å)
1:B:536:GLN:HG3	3:B:1105:HOH:O	2.13	0.48
1:B:390:PHE:HA	1:B:393:MET:HE3	1.95	0.48
1:B:577:GLN:HG2	3:B:1105:HOH:O	2.12	0.47
1:A:364:ARG:HD2	3:A:1500:HOH:O	2.13	0.47
1:B:609:ILE:HG23	1:B:615:PRO:HG3	1.97	0.47
1:A:341:ALA:O	1:A:345:GLU:HG3	2.16	0.46
1:B:355:LEU:HD13	1:B:598:GLU:HG2	1.98	0.46
1:B:202:LEU:C	1:B:202:LEU:HD23	2.37	0.46
1:A:26:TYR:CZ	1:A:99:ILE:HD11	2.52	0.45
1:B:174:LEU:HD11	1:B:187:VAL:HG13	1.99	0.45
1:A:75:LEU:HG	1:A:82:LEU:HD12	1.98	0.44
1:B:589:ASN:N	3:B:1110:HOH:O	2.49	0.44
1:A:449[B]:GLU:HB2	1:A:470:VAL:HB	1.98	0.44
1:A:463:TYR:CE1	1:A:515:PRO:HG2	2.53	0.44
1:B:157:THR:HA	1:B:187:VAL:O	2.18	0.43
1:B:305:LEU:CD2	1:B:344:ARG:HG2	2.48	0.43
1:B:174:LEU:HD13	1:B:187:VAL:HG13	1.98	0.42
1:B:566:PHE:HB2	1:B:572:ILE:HG12	2.01	0.42
1:A:76:GLN:HB2	1:A:108[B]:GLU:HB2	2.01	0.41
1:B:714:GLU:OE2	1:B:749:HIS:HB2	2.20	0.41
1:B:277:GLU:OE1	2:B:1001:GLU:N	2.54	0.41
1:B:536:GLN:CG	3:B:1105:HOH:O	2.68	0.41
1:A:28:VAL:O	1:A:152:ALA:HB2	2.20	0.41
1:A:633:ASN:CA	1:A:681:VAL:HG11	2.50	0.41
1:A:355:LEU:HD13	1:A:598:GLU:HG2	2.02	0.41
1:A:174:LEU:HD11	1:A:187:VAL:HG13	2.03	0.41
1:A:26:TYR:CE2	1:A:99:ILE:HD11	2.55	0.41
1:A:277:GLU:O	1:A:278:PRO:C	2.59	0.41
1:A:782:ILE:HA	1:A:788:PHE:CB	2.50	0.41
1:B:75:LEU:HD21	1:B:96:ILE:CD1	2.44	0.40
1:B:423:PHE:CE1	1:B:427:ILE:HG12	2.56	0.40
1:A:202:LEU:HD23	1:A:202:LEU:C	2.42	0.40
1:A:76:GLN:HG2	1:A:81:LEU:HA	2.02	0.40

There are no symmetry-related clashes.

## 5.3 Torsion angles [i](#)

### 5.3.1 Protein backbone [i](#)

In the following table, the Percentiles column shows the percent Ramachandran outliers of the chain as a percentile score with respect to all X-ray entries followed by that with respect to entries of similar resolution.

The Analysed column shows the number of residues for which the backbone conformation was analysed, and the total number of residues.

Mol	Chain	Analysed	Favoured	Allowed	Outliers	Percentiles	
1	A	859/921 (93%)	833 (97%)	24 (3%)	2 (0%)	47	33
1	B	857/921 (93%)	827 (96%)	23 (3%)	7 (1%)	19	7
All	All	1716/1842 (93%)	1660 (97%)	47 (3%)	9 (0%)	29	15

All (9) Ramachandran outliers are listed below:

Mol	Chain	Res	Type
1	B	570	LYS
1	B	652	ASP
1	B	571	LYS
1	B	590	SER
1	A	275	ALA
1	A	277	GLU
1	B	275	ALA
1	B	277	GLU
1	B	654	LYS

### 5.3.2 Protein sidechains [i](#)

In the following table, the Percentiles column shows the percent sidechain outliers of the chain as a percentile score with respect to all X-ray entries followed by that with respect to entries of similar resolution.

The Analysed column shows the number of residues for which the sidechain conformation was analysed, and the total number of residues.

Mol	Chain	Analysed	Rotameric	Outliers	Percentiles	
1	A	766/816 (94%)	738 (96%)	28 (4%)	34	17
1	B	764/816 (94%)	732 (96%)	32 (4%)	30	13
All	All	1530/1632 (94%)	1470 (96%)	60 (4%)	35	15

All (60) residues with a non-rotameric sidechain are listed below:

Mol	Chain	Res	Type
1	A	14	LYS
1	A	84	GLU
1	A	89	LEU
1	A	106	THR
1	A	185	HIS
1	A	435	LEU
1	A	449[A]	GLU
1	A	449[B]	GLU
1	A	459	ASP
1	A	530	LYS
1	A	589	ASN
1	A	591	LEU
1	A	618	GLU
1	A	619	LYS
1	A	643	LEU
1	A	645[A]	ARG
1	A	645[B]	ARG
1	A	652	ASP
1	A	653	ASP
1	A	655	GLN
1	A	710[A]	SER
1	A	710[B]	SER
1	A	713	CYS
1	A	714	GLU
1	A	721	ASP
1	A	850	ASP
1	A	856	LYS
1	A	857	LYS
1	B	13	SER
1	B	14	LYS
1	B	22	LYS
1	B	54	LEU
1	B	57	ASP
1	B	85	ASN
1	B	109	MET
1	B	113	LEU
1	B	162	GLN
1	B	192	ASP
1	B	425	GLU
1	B	427	ILE
1	B	445[A]	SER
1	B	445[B]	SER

*Continued on next page...*

*Continued from previous page...*

Mol	Chain	Res	Type
1	B	450	LEU
1	B	461	LYS
1	B	466	LYS
1	B	530	LYS
1	B	536	GLN
1	B	570	LYS
1	B	571	LYS
1	B	647	GLN
1	B	654	LYS
1	B	681	VAL
1	B	718	GLU
1	B	721	ASP
1	B	725	GLU
1	B	750[A]	SER
1	B	750[B]	SER
1	B	765	ASP
1	B	826	LYS
1	B	850	ASP

Sometimes sidechains can be flipped to improve hydrogen bonding and reduce clashes. All (2) such sidechains are listed below:

Mol	Chain	Res	Type
1	B	664	GLN
1	B	830	ASN

### 5.3.3 RNA [i](#)

There are no RNA molecules in this entry.

## 5.4 Non-standard residues in protein, DNA, RNA chains [i](#)

There are no non-standard protein/DNA/RNA residues in this entry.

## 5.5 Carbohydrates [i](#)

There are no monosaccharides in this entry.

## 5.6 Ligand geometry

2 ligands are modelled in this entry.

In the following table, the Counts columns list the number of bonds (or angles) for which Mogul statistics could be retrieved, the number of bonds (or angles) that are observed in the model and the number of bonds (or angles) that are defined in the Chemical Component Dictionary. The Link column lists molecule types, if any, to which the group is linked. The Z score for a bond length (or angle) is the number of standard deviations the observed value is removed from the expected value. A bond length (or angle) with  $|Z| > 2$  is considered an outlier worth inspection. RMSZ is the root-mean-square of all Z scores of the bond lengths (or angles).

Mol	Type	Chain	Res	Link	Bond lengths			Bond angles		
					Counts	RMSZ	# Z  > 2	Counts	RMSZ	# Z  > 2
2	GLU	B	1001	-	8,9,9	1.38	1 (12%)	10,11,11	1.79	2 (20%)
2	GLU	A	1001	-	8,9,9	1.01	1 (12%)	10,11,11	1.26	2 (20%)

In the following table, the Chirals column lists the number of chiral outliers, the number of chiral centers analysed, the number of these observed in the model and the number defined in the Chemical Component Dictionary. Similar counts are reported in the Torsion and Rings columns. '-' means no outliers of that kind were identified.

Mol	Type	Chain	Res	Link	Chirals	Torsions	Rings
2	GLU	B	1001	-	-	2/9/9/9	-
2	GLU	A	1001	-	-	4/9/9/9	-

All (2) bond length outliers are listed below:

Mol	Chain	Res	Type	Atoms	Z	Observed(Å)	Ideal(Å)
2	B	1001	GLU	OXT-C	-2.59	1.22	1.30
2	A	1001	GLU	OXT-C	-2.34	1.22	1.30

All (4) bond angle outliers are listed below:

Mol	Chain	Res	Type	Atoms	Z	Observed(°)	Ideal(°)
2	B	1001	GLU	OXT-C-O	-4.14	114.69	124.09
2	B	1001	GLU	OXT-C-CA	2.95	123.44	113.38
2	A	1001	GLU	OE1-CD-CG	-2.26	115.82	123.08
2	A	1001	GLU	OXT-C-O	-2.10	119.32	124.09

There are no chirality outliers.

All (6) torsion outliers are listed below:

Mol	Chain	Res	Type	Atoms
2	B	1001	GLU	OXT-C-CA-CB
2	A	1001	GLU	OXT-C-CA-N
2	A	1001	GLU	O-C-CA-N
2	A	1001	GLU	O-C-CA-CB
2	A	1001	GLU	OXT-C-CA-CB
2	B	1001	GLU	O-C-CA-CB

There are no ring outliers.

1 monomer is involved in 1 short contact:

Mol	Chain	Res	Type	Clashes	Symm-Clashes
2	B	1001	GLU	1	0

## 5.7 Other polymers [i](#)

There are no such residues in this entry.

## 5.8 Polymer linkage issues [i](#)

There are no chain breaks in this entry.



## 6 Fit of model and data

### 6.1 Protein, DNA and RNA chains

In the following table, the column labelled ‘#RSRZ > 2’ contains the number (and percentage) of RSRZ outliers, followed by percent RSRZ outliers for the chain as percentile scores relative to all X-ray entries and entries of similar resolution. The OWAB column contains the minimum, median, 95<sup>th</sup> percentile and maximum values of the occupancy-weighted average B-factor per residue. The column labelled ‘Q < 0.9’ lists the number of (and percentage) of residues with an average occupancy less than 0.9.

Mol	Chain	Analysed	<RSRZ>	#RSRZ>2	OWAB(Å <sup>2</sup> )	Q<0.9
1	A	850/921 (92%)	-0.13	16 (1%) 66 66	19, 29, 53, 108	0
1	B	850/921 (92%)	-0.14	17 (2%) 65 64	18, 29, 52, 105	1 (0%)
All	All	1700/1842 (92%)	-0.14	33 (1%) 66 66	18, 29, 52, 108	1 (0%)

All (33) RSRZ outliers are listed below:

Mol	Chain	Res	Type	RSRZ
1	B	568	ILE	9.0
1	B	567	CYS	6.6
1	A	13	SER	6.4
1	A	650	GLY	5.6
1	A	652	ASP	5.1
1	B	653	ASP	4.6
1	A	57	ASP	4.5
1	B	566	PHE	4.5
1	B	652	ASP	4.0
1	A	651	ASP	3.9
1	A	653	ASP	3.9
1	A	862	VAL	3.8
1	A	58	SER	3.0
1	B	572	ILE	3.0
1	B	650	GLY	2.9
1	B	651	ASP	2.8
1	B	654	LYS	2.7
1	A	54	LEU	2.7
1	A	654	LYS	2.5
1	B	85	ASN	2.5
1	A	230	PRO	2.5
1	A	719	GLU	2.4
1	B	84	GLU	2.4
1	B	13	SER	2.4

*Continued on next page...*

*Continued from previous page...*

Mol	Chain	Res	Type	RSRZ
1	B	57	ASP	2.4
1	B	459	ASP	2.3
1	A	829	VAL	2.3
1	A	55	ASN	2.3
1	B	83	LYS	2.2
1	B	751	PRO	2.2
1	B	460	THR	2.1
1	A	59	HIS	2.1
1	A	56	VAL	2.0

## 6.2 Non-standard residues in protein, DNA, RNA chains [i](#)

There are no non-standard protein/DNA/RNA residues in this entry.

## 6.3 Carbohydrates [i](#)

There are no monosaccharides in this entry.

## 6.4 Ligands [i](#)

In the following table, the Atoms column lists the number of modelled atoms in the group and the number defined in the chemical component dictionary. The B-factors column lists the minimum, median, 95<sup>th</sup> percentile and maximum values of B factors of atoms in the group. The column labelled 'Q<0.9' lists the number of atoms with occupancy less than 0.9.

Mol	Type	Chain	Res	Atoms	RSCC	RSR	B-factors( $\text{\AA}^2$ )	Q<0.9
2	GLU	A	1001	10/10	0.96	0.09	22,24,33,37	0
2	GLU	B	1001	10/10	0.96	0.16	22,26,32,34	0

## 6.5 Other polymers [i](#)

There are no such residues in this entry.