



Full wwPDB X-ray Structure Validation Report ⓘ

Dec 7, 2023 – 10:18 am GMT

PDB ID : 6ZI4
Title : Ultrafast Structural Response to Charge Redistribution Within a Photosynthetic Reaction Centre - 5 ps (a) structure
Authors : Baath, P.; Dods, R.; Braenden, G.; Neutze, R.
Deposited on : 2020-06-24
Resolution : 2.80 Å(reported)

This is a Full wwPDB X-ray Structure Validation Report for a publicly released PDB entry.

We welcome your comments at validation@mail.wwpdb.org

A user guide is available at

<https://www.wwpdb.org/validation/2017/XrayValidationReportHelp>

with specific help available everywhere you see the ⓘ symbol.

The types of validation reports are described at

<http://www.wwpdb.org/validation/2017/FAQs#types>.

The following versions of software and data (see [references ⓘ](#)) were used in the production of this report:

MolProbity : 4.02b-467
Mogul : 1.8.4, CSD as541be (2020)
Xtriage (Phenix) : 1.13
EDS : 2.36
buster-report : 1.1.7 (2018)
Percentile statistics : 20191225.v01 (using entries in the PDB archive December 25th 2019)
Refmac : 5.8.0158
CCP4 : 7.0.044 (Gargrove)
Ideal geometry (proteins) : Engh & Huber (2001)
Ideal geometry (DNA, RNA) : Parkinson et al. (1996)
Validation Pipeline (wwPDB-VP) : 2.36

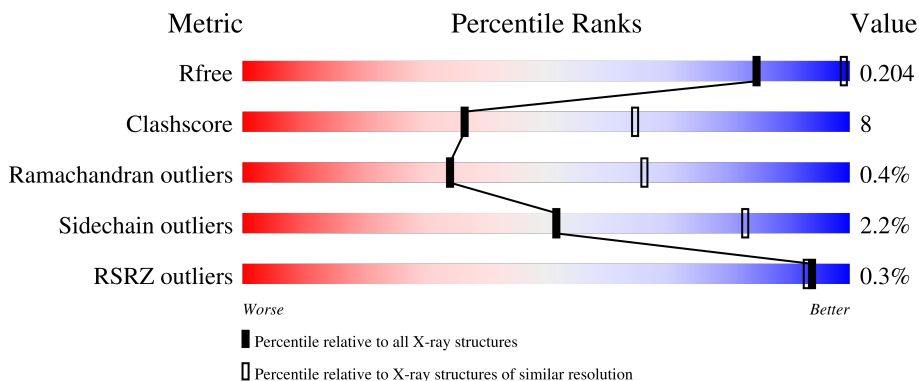
1 Overall quality at a glance

The following experimental techniques were used to determine the structure:

X-RAY DIFFRACTION

The reported resolution of this entry is 2.80 Å.

Percentile scores (ranging between 0-100) for global validation metrics of the entry are shown in the following graphic. The table shows the number of entries on which the scores are based.



Metric	Whole archive (#Entries)	Similar resolution (#Entries, resolution range(Å))
R_{free}	130704	3140 (2.80-2.80)
Clashscore	141614	3569 (2.80-2.80)
Ramachandran outliers	138981	3498 (2.80-2.80)
Sidechain outliers	138945	3500 (2.80-2.80)
RSRZ outliers	127900	3078 (2.80-2.80)

The table below summarises the geometric issues observed across the polymeric chains and their fit to the electron density. The red, orange, yellow and green segments of the lower bar indicate the fraction of residues that contain outliers for ≥ 3 , 2, 1 and 0 types of geometric quality criteria respectively. A grey segment represents the fraction of residues that are not modelled. The numeric value for each fraction is indicated below the corresponding segment, with a dot representing fractions $\leq 5\%$. The upper red bar (where present) indicates the fraction of residues that have poor fit to the electron density. The numeric value is given above the bar.

Mol	Chain	Length	Quality of chain
1	C	336	83% 15% ..
2	H	258	83% 15% .
3	L	273	79% 21%
4	M	323	88% 11%

The following table lists non-polymeric compounds, carbohydrate monomers and non-standard

residues in protein, DNA, RNA chains that are outliers for geometric or electron-density-fit criteria:

Mol	Type	Chain	Res	Chirality	Geometry	Clashes	Electron density
10	BCB	L	301[A]	X	-	-	-
10	BCB	L	301[B]	X	-	-	-
10	BCB	L	302[A]	X	-	-	-
10	BCB	L	302[B]	X	-	-	-
10	BCB	L	304	X	-	-	-
10	BCB	M	403[A]	X	-	-	-
10	BCB	M	403[B]	X	-	-	-
6	DGA	C	405	-	-	-	X
7	SO4	M	412	-	-	-	X
9	HTO	L	306	-	-	-	X

2 Entry composition

There are 15 unique types of molecules in this entry. The entry contains 11266 atoms, of which 0 are hydrogens and 0 are deuteriums.

In the tables below, the ZeroOcc column contains the number of atoms modelled with zero occupancy, the AltConf column contains the number of residues with at least one atom in alternate conformation and the Trace column contains the number of residues modelled with at most 2 atoms.

- Molecule 1 is a protein called Photosynthetic reaction center cytochrome c subunit.

Mol	Chain	Residues	Atoms					ZeroOcc	AltConf	Trace
			Total	C	N	O	S			
1	C	332	2602	1640	466	478	18	0	0	0

- Molecule 2 is a protein called Reaction center protein H chain.

Mol	Chain	Residues	Atoms					ZeroOcc	AltConf	Trace
			Total	C	N	O	S			
2	H	258	2018	1292	344	380	2	0	0	0

- Molecule 3 is a protein called Reaction center protein L chain.

Mol	Chain	Residues	Atoms					ZeroOcc	AltConf	Trace
			Total	C	N	O	S			
3	L	273	2508	1678	409	413	8	0	41	0

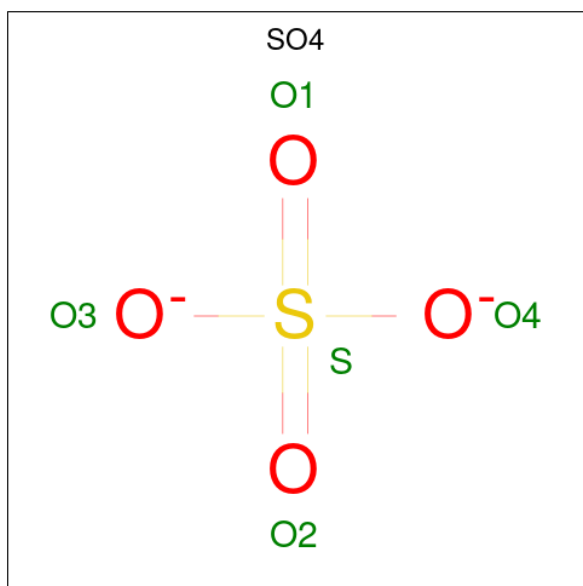
- Molecule 4 is a protein called Reaction center protein M chain.

Mol	Chain	Residues	Atoms					ZeroOcc	AltConf	Trace
			Total	C	N	O	S			
4	M	323	2977	1983	491	490	13	0	51	0

- Molecule 5 is HEME C (three-letter code: HEC) (formula: C₃₄H₃₄FeN₄O₄) (labeled as "Ligand of Interest" by depositor).

Mol	Chain	Residues	Atoms			ZeroOcc	AltConf
6	C	1	Total	C	O	0	0
			37	33	4		

- Molecule 7 is SULFATE ION (three-letter code: SO4) (formula: O₄S).



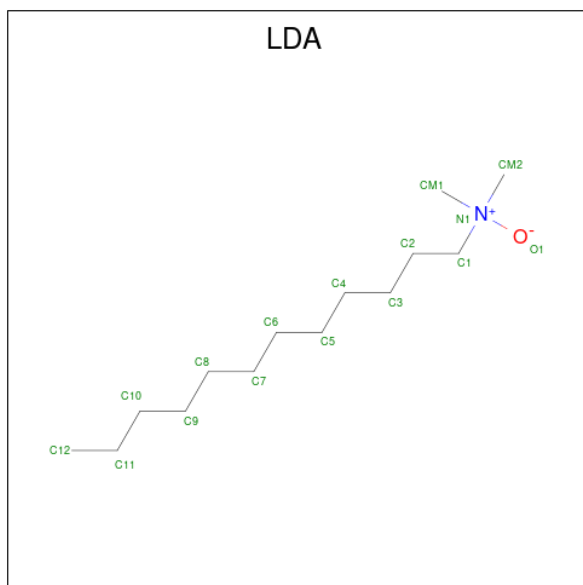
Mol	Chain	Residues	Atoms			ZeroOcc	AltConf
7	C	1	Total	O	S	0	0
			5	4	1		
7	H	1	Total	O	S	0	0
			5	4	1		
7	H	1	Total	O	S	0	0
			5	4	1		
7	H	1	Total	O	S	0	0
			5	4	1		
7	H	1	Total	O	S	0	0
			5	4	1		
7	M	1	Total	O	S	0	0
			5	4	1		
7	M	1	Total	O	S	0	0
			5	4	1		
7	M	1	Total	O	S	0	0
			5	4	1		
7	M	1	Total	O	S	0	0
			5	4	1		

Continued on next page...

Continued from previous page...

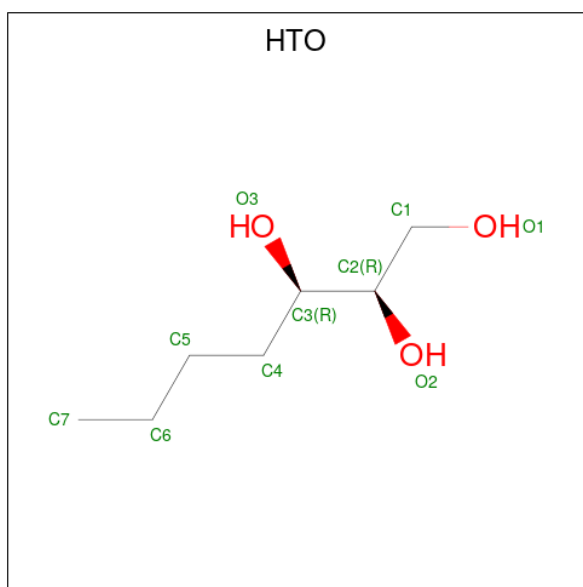
Mol	Chain	Residues	Atoms			ZeroOcc	AltConf
7	M	1	Total	O	S	0	0
			5	4	1		

- Molecule 8 is LAURYL DIMETHYLAMINE-N-OXIDE (three-letter code: LDA) (formula: $C_{14}H_{31}NO$).



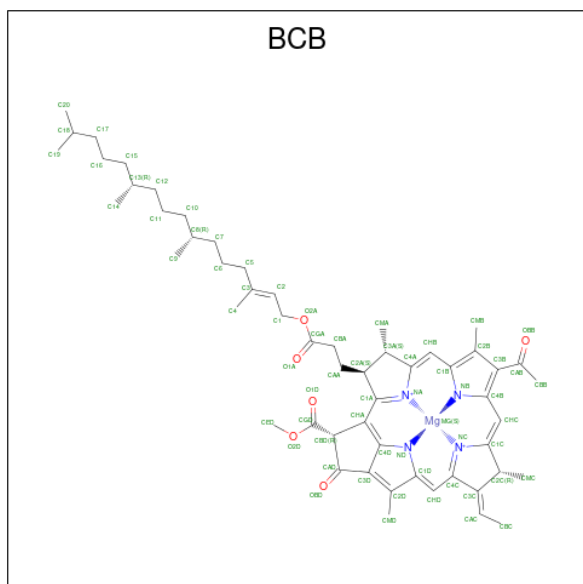
Mol	Chain	Residues	Atoms				ZeroOcc	AltConf
8	H	1	Total	C	N	O	0	0
			16	14	1	1		
8	H	1	Total	C	N	O	0	0
			16	14	1	1		
8	H	1	Total	C	N	O	0	0
			16	14	1	1		
8	L	1	Total	C	N	O	0	0
			16	14	1	1		

- Molecule 9 is HEPTANE-1,2,3-TRIOL (three-letter code: HTO) (formula: $C_7H_{16}O_3$).



Mol	Chain	Residues	Atoms	ZeroOcc	AltConf
9	H	1	Total C O 10 7 3	0	0
9	L	1	Total C O 10 7 3	0	0

- Molecule 10 is BACTERIOCHLOROPHYLL B (three-letter code: BCB) (formula: $C_{55}H_{72}MgN_4O_6$) (labeled as "Ligand of Interest" by depositor).



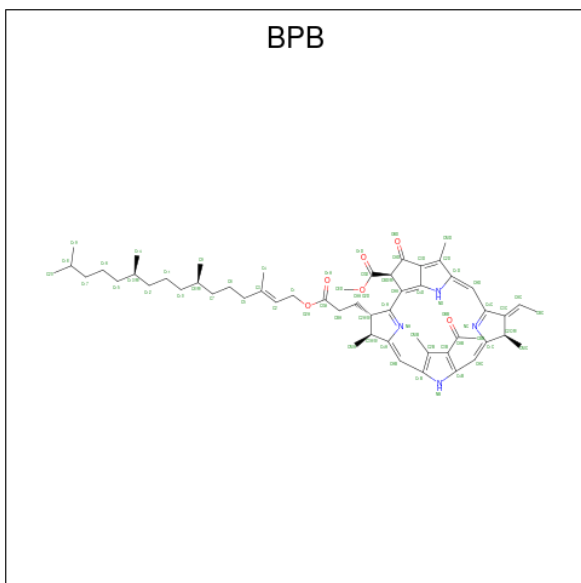
Mol	Chain	Residues	Atoms	ZeroOcc	AltConf
10	L	1	Total C Mg N O 132 110 2 8 12	0	1

Continued on next page...

Continued from previous page...

Mol	Chain	Residues	Atoms					ZeroOcc	AltConf
10	L	1	Total	C	Mg	N	O	0	1
			132	110	2	8	12		
10	L	1	Total	C	Mg	N	O	0	0
			66	55	1	4	6		
10	M	1	Total	C	Mg	N	O	0	1
			132	110	2	8	12		

- Molecule 11 is BACTERIOPHEOPHYTIN B (three-letter code: BPB) (formula: $C_{55}H_{74}N_4O_6$) (labeled as "Ligand of Interest" by depositor).

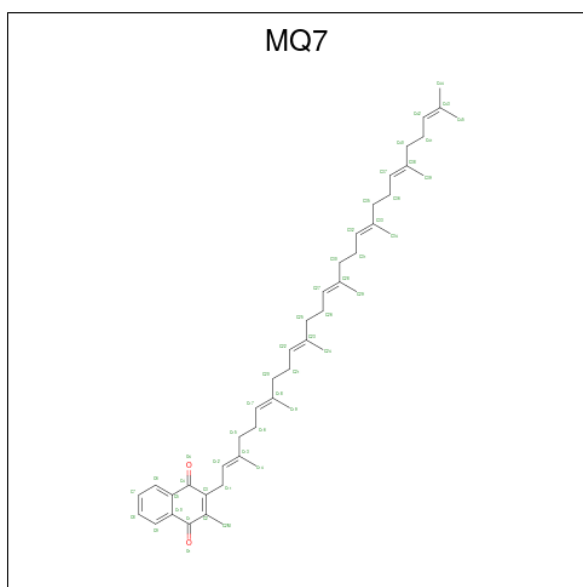


Mol	Chain	Residues	Atoms				ZeroOcc	AltConf
11	L	1	Total	C	N	O	0	1
			130	110	8	12		
11	M	1	Total	C	N	O	0	0
			65	55	4	6		

- Molecule 12 is FE (III) ION (three-letter code: FE) (formula: Fe).

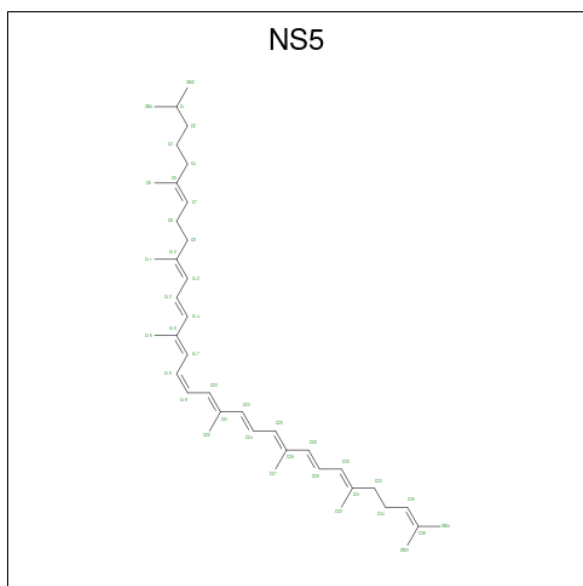
Mol	Chain	Residues	Atoms		ZeroOcc	AltConf
12	M	1	Total	Fe	0	1
			2	2		

- Molecule 13 is MENAQUINONE-7 (three-letter code: MQ7) (formula: $C_{46}H_{64}O_2$) (labeled as "Ligand of Interest" by depositor).



Mol	Chain	Residues	Atoms		ZeroOcc	AltConf
13	M	1	Total	C O	0	1
			96	92 4		

- Molecule 14 is 15-cis-1,2-dihydroneurosporene (three-letter code: NS5) (formula: C₄₀H₆₀).



Mol	Chain	Residues	Atoms		ZeroOcc	AltConf
14	M	1	Total	C	0	0
			40	40		

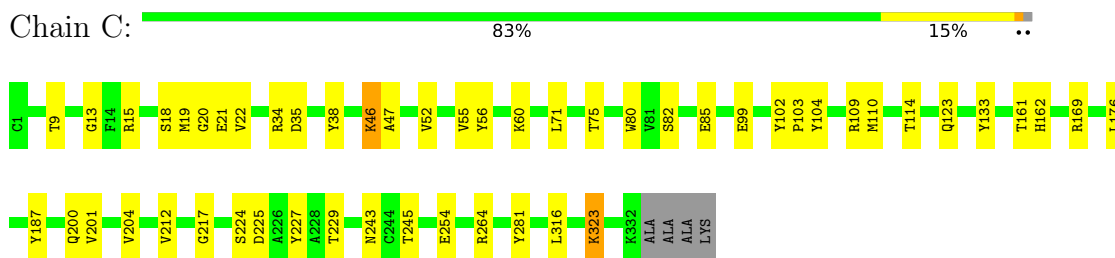
- Molecule 15 is water.

Mol	Chain	Residues	Atoms	ZeroOcc	AltConf
15	C	3	Total O 3 3	0	0
15	H	2	Total O 2 2	0	0
15	L	4	Total O 4 4	0	0
15	M	4	Total O 4 4	0	0

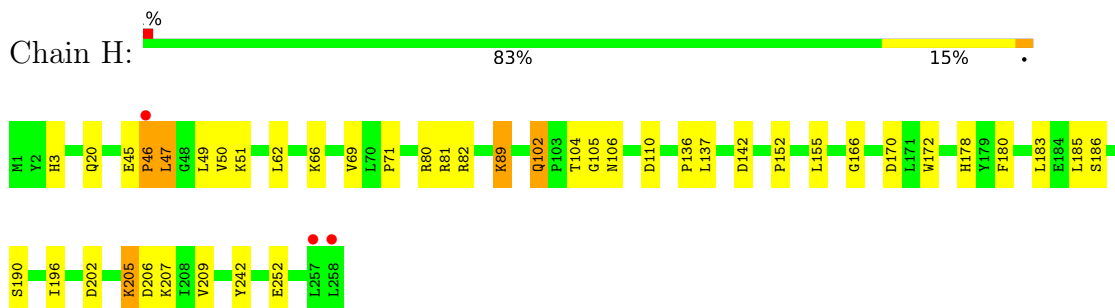
3 Residue-property plots

These plots are drawn for all protein, RNA, DNA and oligosaccharide chains in the entry. The first graphic for a chain summarises the proportions of the various outlier classes displayed in the second graphic. The second graphic shows the sequence view annotated by issues in geometry and electron density. Residues are color-coded according to the number of geometric quality criteria for which they contain at least one outlier: green = 0, yellow = 1, orange = 2 and red = 3 or more. A red dot above a residue indicates a poor fit to the electron density ($RSRZ > 2$). Stretches of 2 or more consecutive residues without any outlier are shown as a green connector. Residues present in the sample, but not in the model, are shown in grey.

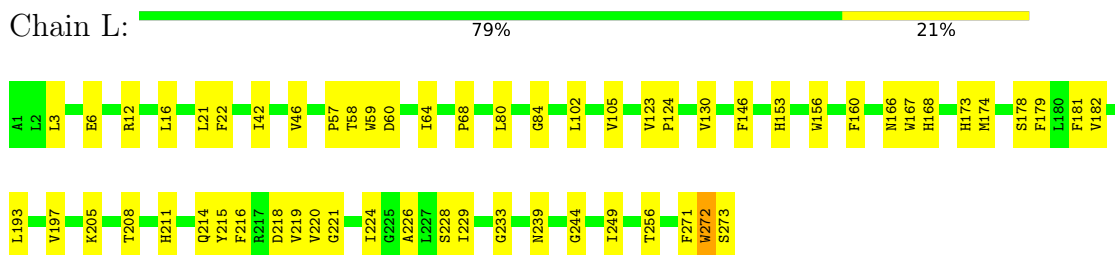
- Molecule 1: Photosynthetic reaction center cytochrome c subunit



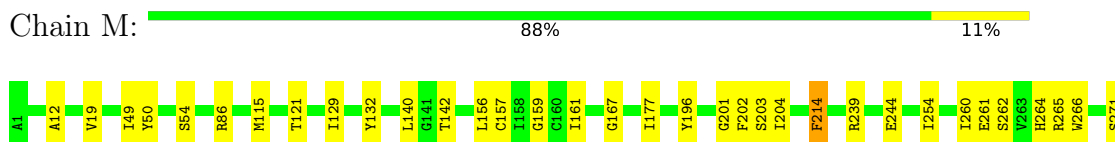
- Molecule 2: Reaction center protein H chain

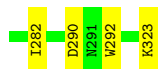


- Molecule 3: Reaction center protein L chain



- Molecule 4: Reaction center protein M chain





4 Data and refinement statistics

Property	Value	Source
Space group	P 43 21 2	Depositor
Cell constants a, b, c, α , β , γ	226.40Å 226.40Å 113.70Å 90.00° 90.00° 90.00°	Depositor
Resolution (Å)	36.88 – 2.80 36.88 – 2.46	Depositor EDS
% Data completeness (in resolution range)	100.0 (36.88-2.80) 86.3 (36.88-2.46)	Depositor EDS
R_{merge}	(Not available)	Depositor
R_{sym}	(Not available)	Depositor
$\langle I/\sigma(I) \rangle$ ¹	1.04 (at 2.45Å)	Xtrriage
Refinement program	REFMAC 5.8.0158, PHENIX 1.17.1_3660	Depositor
R, R_{free}	0.176 , 0.201 0.180 , 0.204	Depositor DCC
R_{free} test set	4542 reflections (4.90%)	wwPDB-VP
Wilson B-factor (Å ²)	75.4	Xtrriage
Anisotropy	0.171	Xtrriage
Bulk solvent k_{sol} (e/Å ³), B_{sol} (Å ²)	0.29 , 63.5	EDS
L-test for twinning ²	$\langle L \rangle = 0.49$, $\langle L^2 \rangle = 0.32$	Xtrriage
Estimated twinning fraction	No twinning to report.	Xtrriage
F_o, F_c correlation	0.96	EDS
Total number of atoms	11266	wwPDB-VP
Average B, all atoms (Å ²)	85.0	wwPDB-VP

Xtrriage's analysis on translational NCS is as follows: *The largest off-origin peak in the Patterson function is 1.74% of the height of the origin peak. No significant pseudotranslation is detected.*

¹Intensities estimated from amplitudes.

²Theoretical values of $\langle |L| \rangle$, $\langle L^2 \rangle$ for acentric reflections are 0.5, 0.333 respectively for untwinned datasets, and 0.375, 0.2 for perfectly twinned datasets.

5 Model quality [i](#)

5.1 Standard geometry [i](#)

Bond lengths and bond angles in the following residue types are not validated in this section: SO4, LDA, BPB, HEC, MQ7, FME, HTO, BCB, DGA, FE, NS5

The Z score for a bond length (or angle) is the number of standard deviations the observed value is removed from the expected value. A bond length (or angle) with $|Z| > 5$ is considered an outlier worth inspection. RMSZ is the root-mean-square of all Z scores of the bond lengths (or angles).

Mol	Chain	Bond lengths		Bond angles	
		RMSZ	# Z >5	RMSZ	# Z >5
1	C	0.44	0/2669	0.61	0/3637
2	H	0.41	0/2055	0.60	0/2807
3	L	0.43	0/2612	0.60	0/3568
4	M	0.47	0/3101	0.56	0/4242
All	All	0.44	0/10437	0.59	0/14254

There are no bond length outliers.

There are no bond angle outliers.

There are no chirality outliers.

There are no planarity outliers.

5.2 Too-close contacts [i](#)

In the following table, the Non-H and H(model) columns list the number of non-hydrogen atoms and hydrogen atoms in the chain respectively. The H(added) column lists the number of hydrogen atoms added and optimized by MolProbity. The Clashes column lists the number of clashes within the asymmetric unit, whereas Symm-Clashes lists symmetry-related clashes.

Mol	Chain	Non-H	H(model)	H(added)	Clashes	Symm-Clashes
1	C	2602	0	2578	57	0
2	H	2018	0	2020	40	0
3	L	2508	0	2390	51	0
4	M	2977	0	2832	29	0
5	C	172	0	120	8	0
6	C	37	0	58	0	0
7	C	5	0	0	0	0
7	H	20	0	0	0	0
7	M	35	0	0	1	0

Continued on next page...

Continued from previous page...

Mol	Chain	Non-H	H(model)	H(added)	Clashes	Symm-Clashes
8	H	48	0	93	2	0
8	L	16	0	31	1	0
9	H	10	0	16	0	0
9	L	10	0	16	0	0
10	L	330	0	360	14	0
10	M	132	0	144	5	0
11	L	130	0	148	8	0
11	M	65	0	74	5	0
12	M	2	0	0	0	0
13	M	96	0	128	2	0
14	M	40	0	60	3	0
15	C	3	0	0	0	0
15	H	2	0	0	0	0
15	L	4	0	0	0	0
15	M	4	0	0	0	0
All	All	11266	0	11068	176	0

The all-atom clashscore is defined as the number of clashes found per 1000 atoms (including hydrogen atoms). The all-atom clashscore for this structure is 8.

All (176) close contacts within the same asymmetric unit are listed below, sorted by their clash magnitude.

Atom-1	Atom-2	Interatomic distance (Å)	Clash overlap (Å)
2:H:89:LYS:HE2	2:H:110:ASP:CB	1.96	0.95
1:C:13:GLY:HA3	1:C:19:MET:CE	2.05	0.87
2:H:89:LYS:HE2	2:H:110:ASP:HB2	1.55	0.86
1:C:13:GLY:CA	1:C:19:MET:HE2	2.07	0.85
1:C:13:GLY:HA3	1:C:19:MET:HE2	1.60	0.82
1:C:13:GLY:CA	1:C:19:MET:CE	2.59	0.80
2:H:152:PRO:HA	2:H:155:LEU:HD13	1.60	0.80
11:M:404:BPB:HHC	11:M:404:BPB:HBBB	1.66	0.78
4:M:54:SER:HB3	4:M:129:ILE:HD11	1.64	0.77
1:C:20:GLY:N	1:C:245:THR:HG21	1.99	0.77
1:C:200:GLN:HE21	1:C:201:VAL:H	1.31	0.77
2:H:205:LYS:HD3	2:H:205:LYS:H	1.48	0.76
1:C:52:VAL:HA	1:C:55:VAL:HG12	1.68	0.75
3:L:233:GLY:HA3	4:M:214[A]:PHE:CZ	2.23	0.74
3:L:208:THR:HG22	3:L:211:HIS:ND1	2.04	0.72
1:C:110:MET:O	1:C:114:THR:HG23	1.88	0.72
1:C:243:ASN:OD1	1:C:245:THR:HB	1.89	0.72
1:C:200:GLN:HE21	1:C:201:VAL:N	1.88	0.70

Continued on next page...

Continued from previous page...

Atom-1	Atom-2	Interatomic distance (Å)	Clash overlap (Å)
3:L:233:GLY:HA3	4:M:214[A]:PHE:CE1	2.27	0.69
1:C:20:GLY:H	1:C:245:THR:HG21	1.55	0.69
1:C:204:VAL:HG11	1:C:254:GLU:HB3	1.76	0.68
1:C:204:VAL:CG1	1:C:254:GLU:HB3	2.24	0.68
1:C:169:ARG:HG3	1:C:169:ARG:HH11	1.58	0.67
1:C:46:LYS:HD3	1:C:47:ALA:H	1.59	0.66
1:C:46:LYS:HA	1:C:46:LYS:HE2	1.77	0.65
1:C:13:GLY:N	1:C:19:MET:HE2	2.10	0.65
2:H:89:LYS:HE2	2:H:110:ASP:HB3	1.77	0.63
3:L:42:ILE:O	3:L:46:VAL:HG12	1.98	0.63
2:H:252:GLU:OE2	2:H:252:GLU:N	2.27	0.63
1:C:13:GLY:CA	1:C:19:MET:HE1	2.29	0.63
8:H:701:LDA:HM11	8:L:305:LDA:HM21	1.81	0.62
2:H:47:LEU:C	2:H:47:LEU:HD13	2.21	0.60
1:C:201:VAL:O	1:C:229:THR:HG21	2.01	0.60
2:H:205:LYS:H	2:H:205:LYS:CD	2.14	0.60
1:C:18:SER:HB2	3:L:156[B]:TRP:CD1	2.37	0.60
2:H:45:GLU:HG3	2:H:46:PRO:HD2	1.85	0.58
3:L:166[B]:ASN:OD1	3:L:168[B]:HIS:HB2	2.04	0.58
1:C:52:VAL:HA	1:C:55:VAL:CG1	2.34	0.58
4:M:54:SER:HB3	4:M:129:ILE:CD1	2.33	0.58
1:C:19:MET:HB3	1:C:245:THR:HG23	1.86	0.57
3:L:197:VAL:HA	4:M:140:LEU:HD22	1.85	0.57
1:C:161:THR:HG21	3:L:273:SER:O	2.05	0.56
3:L:60:ASP:O	3:L:64:ILE:HD12	2.06	0.56
3:L:224:ILE:HG12	3:L:228:SER:HB2	1.86	0.56
3:L:181:PHE:HB3	11:M:404:BPB:HBBA	1.87	0.56
1:C:34:ARG:HD2	1:C:35:ASP:OD1	2.06	0.54
1:C:323:LYS:HD3	1:C:323:LYS:H	1.72	0.54
1:C:82:SER:HB2	1:C:85:GLU:HB2	1.89	0.54
1:C:80:TRP:CD1	1:C:133:TYR:HB2	2.43	0.54
1:C:109:ARG:HH11	1:C:281:TYR:HA	1.73	0.54
1:C:169:ARG:HG3	1:C:169:ARG:NH1	2.21	0.54
11:L:303[A]:BPB:HMB	11:L:303[A]:BPB:HBBB	1.90	0.53
2:H:136:PRO:HA	2:H:172:TRP:HA	1.89	0.53
4:M:196[B]:TYR:O	4:M:292:TRP:HB3	2.08	0.53
1:C:114:THR:HG21	5:C:402:HEC:HHC	1.90	0.53
1:C:225:ASP:O	1:C:229:THR:HG23	2.08	0.52
5:C:402:HEC:HMB1	5:C:402:HEC:HBB3	1.90	0.52
3:L:215:TYR:O	3:L:219:VAL:HG12	2.10	0.52
1:C:102:TYR:CG	1:C:103:PRO:HD3	2.45	0.51

Continued on next page...

Continued from previous page...

Atom-1	Atom-2	Interatomic distance (Å)	Clash overlap (Å)
3:L:16:LEU:HD11	3:L:105:VAL:CG2	2.40	0.51
3:L:168[B]:HIS:CE1	10:L:301[B]:BCB:HMC2	2.45	0.51
10:L:304:BCB:HHC	10:L:304:BCB:HBB2	1.92	0.51
2:H:196:ILE:HD12	2:H:242:TYR:CZ	2.45	0.51
2:H:202:ASP:HB3	2:H:209:VAL:HB	1.92	0.51
3:L:181:PHE:HB3	11:M:404:BPB:CBB	2.40	0.51
3:L:80:LEU:HA	3:L:84:GLY:HA3	1.93	0.51
5:C:403:HEC:HBC1	5:C:404:HEC:HMA1	1.93	0.51
2:H:142:ASP:OD1	2:H:142:ASP:N	2.36	0.51
4:M:159:GLY:HA3	14:M:405:NS5:H272	1.91	0.51
3:L:226:ALA:O	3:L:229:ILE:HG22	2.11	0.51
4:M:260[B]:ILE:O	4:M:264[B]:HIS:ND1	2.36	0.50
1:C:99:GLU:HG2	1:C:104:TYR:CE1	2.45	0.50
4:M:157:CYS:HA	4:M:161:ILE:HB	1.92	0.50
4:M:204[B]:ILE:HG12	10:M:403[B]:BCB:HMB3	1.92	0.50
1:C:20:GLY:N	1:C:245:THR:CG2	2.72	0.50
4:M:121:THR:HG23	4:M:156:LEU:HD21	1.94	0.50
3:L:214:GLN:HG2	4:M:19:VAL:HB	1.94	0.49
5:C:402:HEC:HHA	5:C:402:HEC:O1D	2.13	0.49
2:H:89:LYS:HB2	2:H:104:THR:OG1	2.12	0.49
1:C:114:THR:HG22	5:C:402:HEC:HMC2	1.94	0.49
10:L:301[B]:BCB:H2C	10:M:403[B]:BCB:H2C	1.95	0.49
10:L:304:BCB:HBB3	10:M:403[A]:BCB:H62	1.95	0.49
3:L:178[A]:SER:O	3:L:182:VAL:HG12	2.13	0.48
1:C:13:GLY:HA2	1:C:19:MET:HE1	1.95	0.48
1:C:46:LYS:HD3	1:C:47:ALA:N	2.25	0.48
1:C:13:GLY:HA3	1:C:19:MET:HE1	1.90	0.48
2:H:166:GLY:HA3	2:H:186:SER:O	2.14	0.48
2:H:45:GLU:HG3	2:H:46:PRO:CD	2.43	0.48
2:H:66:LYS:NZ	4:M:261[B]:GLU:OE2	2.47	0.48
3:L:174[B]:MET:HA	10:L:304:BCB:OBD	2.14	0.48
10:L:301[B]:BCB:H143	11:L:303[B]:BPB:H5A	1.96	0.48
1:C:18:SER:HB2	3:L:156[A]:TRP:CD1	2.49	0.47
10:L:301[A]:BCB:H202	13:M:402[A]:MQ7:H261	1.96	0.47
3:L:179:PHE:CD2	3:L:239[B]:ASN:HB3	2.49	0.47
3:L:233:GLY:CA	4:M:214[A]:PHE:CZ	2.96	0.47
3:L:181:PHE:CD2	11:M:404:BPB:HBB	2.50	0.47
2:H:155:LEU:HD23	2:H:206:ASP:C	2.35	0.47
1:C:102:TYR:CD2	1:C:103:PRO:HD3	2.50	0.47
2:H:69:VAL:CG2	3:L:205:LYS:HA	2.45	0.47
4:M:132:TYR:CE2	4:M:142:THR:HG21	2.51	0.47

Continued on next page...

Continued from previous page...

Atom-1	Atom-2	Interatomic distance (Å)	Clash overlap (Å)
10:M:403[B]:BCB:HBD	10:M:403[B]:BCB:HAA1	1.97	0.46
10:L:302[B]:BCB:OBD	4:M:201[B]:GLY:HA2	2.15	0.46
10:L:302[A]:BCB:HMB1	10:L:302[A]:BCB:HBB2	1.97	0.46
2:H:62:LEU:O	8:H:707:LDA:HM21	2.16	0.46
2:H:80:ARG:NH2	2:H:82:ARG:HD2	2.31	0.46
11:L:303[A]:BPB:HEDB	4:M:254:ILE:HG21	1.96	0.46
2:H:49:LEU:O	2:H:51:LYS:N	2.50	0.45
1:C:109:ARG:NH1	1:C:281:TYR:HA	2.32	0.45
2:H:47:LEU:CD1	2:H:49:LEU:HB3	2.46	0.45
2:H:196:ILE:HD12	2:H:242:TYR:CE1	2.50	0.45
4:M:265[B]:ARG:NH1	7:M:408:SO4:O1	2.45	0.45
3:L:244[A]:GLY:O	10:L:301[A]:BCB:HED3	2.16	0.45
2:H:137:LEU:HB2	2:H:170:ASP:OD1	2.16	0.45
4:M:239:ARG:HD3	4:M:244[B]:GLU:HG2	1.99	0.45
2:H:80:ARG:CZ	2:H:82:ARG:HD2	2.47	0.44
2:H:89:LYS:CD	2:H:105:GLY:H	2.31	0.44
4:M:262[B]:SER:O	4:M:266[B]:TRP:HD1	2.00	0.44
1:C:71:LEU:O	1:C:75:THR:HG23	2.17	0.44
3:L:3:LEU:HB2	3:L:6:GLU:HB2	1.99	0.44
3:L:146:PHE:HB3	3:L:156[A]:TRP:CD2	2.53	0.44
1:C:22:VAL:HG22	3:L:256:THR:HG22	2.00	0.44
3:L:153[B]:HIS:HD2	10:L:302[B]:BCB:HMC3	1.82	0.44
3:L:146:PHE:HB3	3:L:156[B]:TRP:CE3	2.53	0.44
2:H:81:ARG:HD2	2:H:81:ARG:H	1.83	0.44
2:H:89:LYS:HZ3	2:H:106:ASN:C	2.21	0.44
14:M:405:NS5:H18	14:M:405:NS5:H161	1.82	0.44
3:L:244[B]:GLY:O	10:L:301[B]:BCB:HED3	2.17	0.43
11:L:303[B]:BPB:OBB	11:L:303[B]:BPB:HHC	2.18	0.43
1:C:35:ASP:OD2	1:C:316:LEU:HA	2.19	0.43
11:L:303[A]:BPB:OBB	11:L:303[A]:BPB:HHC	2.18	0.43
3:L:130:VAL:HG13	3:L:249:ILE:HG12	2.01	0.43
1:C:176:LEU:HD11	1:C:187:TYR:O	2.19	0.43
4:M:254:ILE:HD11	13:M:402[A]:MQ7:H142	2.01	0.43
2:H:20:GLN:HG2	4:M:202[A]:PHE:CE2	2.53	0.43
3:L:221:GLY:N	4:M:49:ILE:HD13	2.34	0.43
14:M:405:NS5:H29	14:M:405:NS5:H271	1.86	0.43
1:C:19:MET:HA	1:C:245:THR:HG21	2.00	0.42
1:C:204:VAL:HG13	1:C:254:GLU:HB3	2.01	0.42
2:H:89:LYS:HD2	2:H:105:GLY:H	1.84	0.42
4:M:239:ARG:HD3	4:M:244[A]:GLU:HG2	1.99	0.42
1:C:161:THR:OG1	1:C:162:HIS:N	2.52	0.42

Continued on next page...

Continued from previous page...

Atom-1	Atom-2	Interatomic distance (Å)	Clash overlap (Å)
3:L:16:LEU:HD11	3:L:105:VAL:HG23	2.01	0.42
1:C:15:ARG:HD2	3:L:68:PRO:O	2.19	0.42
3:L:102:LEU:O	3:L:105:VAL:HG22	2.20	0.42
10:L:301[B]:BCB:H192	10:L:301[B]:BCB:H162	1.75	0.42
5:C:404:HEC:HMD1	5:C:404:HEC:HAD2	1.93	0.42
4:M:282:ILE:HD11	10:M:403[B]:BCB:OBD	2.20	0.42
2:H:183:LEU:HB2	2:H:196:ILE:CG2	2.50	0.42
3:L:124:PRO:HD3	11:L:303[A]:BPB:HAC	2.01	0.42
1:C:56:TYR:HB3	5:C:401:HEC:O2A	2.20	0.42
2:H:47:LEU:C	2:H:47:LEU:CD1	2.86	0.42
1:C:9:THR:HA	1:C:21:GLU:O	2.19	0.41
3:L:174[A]:MET:HE3	10:L:304:BCB:O1D	2.20	0.41
1:C:217:GLY:HA2	4:M:167:GLY:O	2.20	0.41
1:C:264:ARG:HG2	5:C:403:HEC:HMD3	2.01	0.41
1:C:323:LYS:H	1:C:323:LYS:CD	2.32	0.41
1:C:224:SER:HA	1:C:227:TYR:HD1	1.85	0.41
3:L:21:LEU:HD12	3:L:22:PHE:CE2	2.55	0.41
2:H:180:PHE:CE2	4:M:12:ALA:HB2	2.56	0.41
2:H:89:LYS:HZ2	2:H:105:GLY:C	2.23	0.41
1:C:18:SER:HB2	3:L:156[B]:TRP:NE1	2.35	0.41
3:L:58:THR:OG1	3:L:59:TRP:N	2.54	0.41
3:L:193:LEU:HD22	3:L:216:PHE:HE2	1.84	0.41
11:L:303[B]:BPB:H7A	11:L:303[B]:BPB:H11A	1.89	0.41
2:H:45:GLU:O	2:H:47:LEU:N	2.54	0.41
2:H:155:LEU:HD23	2:H:207:LYS:N	2.36	0.41
3:L:123:VAL:HG22	3:L:124:PRO:HD3	2.02	0.41
3:L:218:ASP:O	4:M:50:TYR:HB3	2.20	0.41
2:H:47:LEU:HD12	2:H:49:LEU:HB3	2.02	0.41
2:H:102:GLN:HE21	3:L:12:ARG:HD3	1.86	0.40
3:L:220:VAL:HG11	11:M:404:BPB:HEDA	2.04	0.40
1:C:212:VAL:HG22	2:H:3:HIS:CD2	2.56	0.40
3:L:146:PHE:HB3	3:L:156[B]:TRP:CD2	2.55	0.40
3:L:272:TRP:CE2	4:M:86:ARG:HG3	2.56	0.40
3:L:42:ILE:HG12	11:L:303[B]:BPB:H6A	2.02	0.40
3:L:167[A]:TRP:HE1	3:L:173[A]:HIS:CD2	2.40	0.40

There are no symmetry-related clashes.

5.3 Torsion angles [i](#)

5.3.1 Protein backbone [i](#)

In the following table, the Percentiles column shows the percent Ramachandran outliers of the chain as a percentile score with respect to all X-ray entries followed by that with respect to entries of similar resolution.

The Analysed column shows the number of residues for which the backbone conformation was analysed, and the total number of residues.

Mol	Chain	Analysed	Favoured	Allowed	Outliers	Percentiles	
1	C	330/336 (98%)	319 (97%)	11 (3%)	0	100	100
2	H	256/258 (99%)	245 (96%)	8 (3%)	3 (1%)	13	39
3	L	312/273 (114%)	298 (96%)	13 (4%)	1 (0%)	41	72
4	M	372/323 (115%)	358 (96%)	13 (4%)	1 (0%)	41	72
All	All	1270/1190 (107%)	1220 (96%)	45 (4%)	5 (0%)	34	66

All (5) Ramachandran outliers are listed below:

Mol	Chain	Res	Type
2	H	47	LEU
2	H	50	VAL
2	H	46	PRO
4	M	177	ILE
3	L	57	PRO

5.3.2 Protein sidechains [i](#)

In the following table, the Percentiles column shows the percent sidechain outliers of the chain as a percentile score with respect to all X-ray entries followed by that with respect to entries of similar resolution.

The Analysed column shows the number of residues for which the sidechain conformation was analysed, and the total number of residues.

Mol	Chain	Analysed	Rotameric	Outliers	Percentiles	
1	C	281/282 (100%)	276 (98%)	5 (2%)	59	86
2	H	212/212 (100%)	205 (97%)	7 (3%)	38	72
3	L	253/218 (116%)	249 (98%)	4 (2%)	62	88
4	M	288/249 (116%)	280 (97%)	8 (3%)	43	77
All	All	1034/961 (108%)	1010 (98%)	24 (2%)	52	82

All (24) residues with a non-rotameric sidechain are listed below:

Mol	Chain	Res	Type
1	C	38	TYR
1	C	46	LYS
1	C	60	LYS
1	C	123	GLN
1	C	323	LYS
2	H	71	PRO
2	H	89	LYS
2	H	102	GLN
2	H	178	HIS
2	H	185	LEU
2	H	190	SER
2	H	205	LYS
3	L	160[A]	PHE
3	L	160[B]	PHE
3	L	271	PHE
3	L	272	TRP
4	M	115	MET
4	M	203[A]	SER
4	M	203[B]	SER
4	M	214[A]	PHE
4	M	214[B]	PHE
4	M	271	SER
4	M	290	ASP
4	M	323	LYS

Sometimes sidechains can be flipped to improve hydrogen bonding and reduce clashes. All (8) such sidechains are listed below:

Mol	Chain	Res	Type
1	C	24	HIS
1	C	123	GLN
1	C	200	GLN
1	C	310	GLN
2	H	8	GLN
2	H	102	GLN
2	H	106	ASN
2	H	220	ASN

5.3.3 RNA

There are no RNA molecules in this entry.

5.4 Non-standard residues in protein, DNA, RNA chains [i](#)

1 non-standard protein/DNA/RNA residue is modelled in this entry.

In the following table, the Counts columns list the number of bonds (or angles) for which Mogul statistics could be retrieved, the number of bonds (or angles) that are observed in the model and the number of bonds (or angles) that are defined in the Chemical Component Dictionary. The Link column lists molecule types, if any, to which the group is linked. The Z score for a bond length (or angle) is the number of standard deviations the observed value is removed from the expected value. A bond length (or angle) with $|Z| > 2$ is considered an outlier worth inspection. RMSZ is the root-mean-square of all Z scores of the bond lengths (or angles).

Mol	Type	Chain	Res	Link	Bond lengths			Bond angles		
					Counts	RMSZ	# Z > 2	Counts	RMSZ	# Z > 2
2	FME	H	1	2	8,9,10	1.01	0	7,9,11	0.94	0

In the following table, the Chirals column lists the number of chiral outliers, the number of chiral centers analysed, the number of these observed in the model and the number defined in the Chemical Component Dictionary. Similar counts are reported in the Torsion and Rings columns. '-' means no outliers of that kind were identified.

Mol	Type	Chain	Res	Link	Chirals	Torsions	Rings
2	FME	H	1	2	-	1/7/9/11	-

There are no bond length outliers.

There are no bond angle outliers.

There are no chirality outliers.

All (1) torsion outliers are listed below:

Mol	Chain	Res	Type	Atoms
2	H	1	FME	CB-CG-SD-CE

There are no ring outliers.

No monomer is involved in short contacts.

5.5 Carbohydrates [i](#)

There are no monosaccharides in this entry.

5.6 Ligand geometry [i](#)

Of 38 ligands modelled in this entry, 2 are monoatomic - leaving 36 for Mogul analysis.

In the following table, the Counts columns list the number of bonds (or angles) for which Mogul statistics could be retrieved, the number of bonds (or angles) that are observed in the model and the number of bonds (or angles) that are defined in the Chemical Component Dictionary. The Link column lists molecule types, if any, to which the group is linked. The Z score for a bond length (or angle) is the number of standard deviations the observed value is removed from the expected value. A bond length (or angle) with $|Z| > 2$ is considered an outlier worth inspection. RMSZ is the root-mean-square of all Z scores of the bond lengths (or angles).

Mol	Type	Chain	Res	Link	Bond lengths			Bond angles		
					Counts	RMSZ	# Z > 2	Counts	RMSZ	# Z > 2
7	SO4	H	702	-	4,4,4	0.21	0	6,6,6	0.28	0
5	HEC	C	401	1	32,50,50	1.54	4 (12%)	24,82,82	2.20	7 (29%)
10	BCB	L	302[A]	-	63,74,74	1.86	14 (22%)	74,115,115	3.01	25 (33%)
10	BCB	M	403[B]	-	63,74,74	1.92	14 (22%)	74,115,115	3.21	26 (35%)
10	BCB	M	403[A]	-	63,74,74	1.94	14 (22%)	74,115,115	3.21	24 (32%)
7	SO4	M	407	-	4,4,4	0.11	0	6,6,6	0.14	0
8	LDA	L	305	-	12,15,15	0.37	0	14,17,17	0.73	0
6	DGA	C	405	1	36,36,43	1.17	3 (8%)	38,38,45	1.22	4 (10%)
10	BCB	L	304	-	63,74,74	1.87	14 (22%)	74,115,115	3.21	22 (29%)
7	SO4	M	409	-	4,4,4	0.26	0	6,6,6	0.21	0
11	BPB	L	303[B]	-	49,70,70	2.12	9 (18%)	47,101,101	2.12	13 (27%)
11	BPB	M	404	-	49,70,70	2.17	9 (18%)	47,101,101	2.28	14 (29%)
7	SO4	H	704	-	4,4,4	0.12	0	6,6,6	0.14	0
7	SO4	H	705	-	4,4,4	0.15	0	6,6,6	0.15	0
7	SO4	M	408	-	4,4,4	0.20	0	6,6,6	0.26	0
11	BPB	L	303[A]	-	49,70,70	2.07	9 (18%)	47,101,101	2.23	14 (29%)
8	LDA	H	701	-	12,15,15	0.36	0	14,17,17	0.68	0
5	HEC	C	402	1	32,50,50	1.43	3 (9%)	24,82,82	1.96	7 (29%)
10	BCB	L	301[B]	-	63,74,74	1.94	14 (22%)	74,115,115	3.08	24 (32%)
8	LDA	H	707	-	12,15,15	0.31	0	14,17,17	1.17	1 (7%)
8	LDA	H	706	-	12,15,15	0.38	0	14,17,17	0.79	0
10	BCB	L	301[A]	-	63,74,74	1.94	14 (22%)	74,115,115	3.16	26 (35%)
13	MQ7	M	402[B]	-	49,49,49	1.46	2 (4%)	60,63,63	1.38	10 (16%)
7	SO4	C	406	-	4,4,4	0.24	0	6,6,6	0.18	0
9	HTO	L	306	-	9,9,9	0.75	0	10,10,10	0.89	1 (10%)
13	MQ7	M	402[A]	-	49,49,49	1.54	2 (4%)	60,63,63	1.49	10 (16%)
7	SO4	H	703	-	4,4,4	0.22	0	6,6,6	0.19	0
7	SO4	M	410	-	4,4,4	0.27	0	6,6,6	0.24	0
5	HEC	C	404	1	32,50,50	1.56	4 (12%)	24,82,82	1.97	8 (33%)
9	HTO	H	708	-	9,9,9	0.79	0	10,10,10	0.79	0
7	SO4	M	411	-	4,4,4	0.32	0	6,6,6	0.33	0
7	SO4	M	406	-	4,4,4	0.13	0	6,6,6	0.41	0

Mol	Type	Chain	Res	Link	Bond lengths			Bond angles		
					Counts	RMSZ	# Z > 2	Counts	RMSZ	# Z > 2
7	SO4	M	412	-	4,4,4	0.22	0	6,6,6	0.14	0
5	HEC	C	403	1	32,50,50	1.56	5 (15%)	24,82,82	1.94	11 (45%)
10	BCB	L	302[B]	-	63,74,74	1.91	16 (25%)	74,115,115	2.90	24 (32%)
14	NS5	M	405	-	39,39,39	1.38	1 (2%)	44,46,46	2.04	12 (27%)

In the following table, the Chirals column lists the number of chiral outliers, the number of chiral centers analysed, the number of these observed in the model and the number defined in the Chemical Component Dictionary. Similar counts are reported in the Torsion and Rings columns. '-' means no outliers of that kind were identified.

Mol	Type	Chain	Res	Link	Chirals	Torsions	Rings
10	BCB	L	302[A]	-	2/2/21/26	6/37/137/137	-
5	HEC	C	401	1	-	3/10/54/54	-
10	BCB	M	403[B]	-	3/3/21/26	8/37/137/137	-
10	BCB	M	403[A]	-	3/3/21/26	13/37/137/137	-
8	LDA	L	305	-	-	6/13/13/13	-
6	DGA	C	405	1	-	15/37/37/45	-
10	BCB	L	304	-	3/3/21/26	14/37/137/137	-
11	BPB	L	303[B]	-	-	7/37/105/105	0/5/6/6
11	BPB	M	404	-	-	8/37/105/105	0/5/6/6
11	BPB	L	303[A]	-	-	8/37/105/105	0/5/6/6
8	LDA	H	701	-	-	4/13/13/13	-
5	HEC	C	402	1	-	3/10/54/54	-
10	BCB	L	301[B]	-	3/3/21/26	11/37/137/137	-
8	LDA	H	707	-	-	11/13/13/13	-
8	LDA	H	706	-	-	6/13/13/13	-
10	BCB	L	301[A]	-	3/3/21/26	7/37/137/137	-
13	MQ7	M	402[B]	-	-	2/41/61/61	0/2/2/2
9	HTO	L	306	-	-	4/10/10/10	-
13	MQ7	M	402[A]	-	-	0/41/61/61	0/2/2/2
5	HEC	C	404	1	-	5/10/54/54	-
9	HTO	H	708	-	-	1/10/10/10	-
5	HEC	C	403	1	-	0/10/54/54	-
10	BCB	L	302[B]	-	2/2/21/26	11/37/137/137	-
14	NS5	M	405	-	-	10/43/43/43	-

All (151) bond length outliers are listed below:

Mol	Chain	Res	Type	Atoms	Z	Observed(Å)	Ideal(Å)
13	M	402[B]	MQ7	C3-C2	8.26	1.50	1.35
13	M	402[A]	MQ7	C3-C2	8.08	1.50	1.35
11	M	404	BPB	CAC-C3C	7.34	1.52	1.33
14	M	405	NS5	C35-C36	7.33	1.53	1.32
11	L	303[A]	BPB	CAC-C3C	7.31	1.52	1.33
11	L	303[B]	BPB	CAC-C3C	7.30	1.52	1.33
10	M	403[A]	BCB	CAC-C3C	6.25	1.50	1.33
10	L	301[A]	BCB	CAC-C3C	6.13	1.50	1.33
10	L	302[A]	BCB	CAC-C3C	6.07	1.50	1.33
10	M	403[B]	BCB	CAC-C3C	5.98	1.49	1.33
10	L	301[B]	BCB	CAC-C3C	5.97	1.49	1.33
10	L	302[B]	BCB	CAC-C3C	5.92	1.49	1.33
10	L	304	BCB	CAC-C3C	5.70	1.49	1.33
11	L	303[B]	BPB	C3B-C2B	5.66	1.49	1.39
10	M	403[B]	BCB	O2D-CGD	5.55	1.46	1.33
10	M	403[A]	BCB	O2D-CGD	5.46	1.46	1.33
10	L	301[B]	BCB	O2D-CGD	5.46	1.46	1.33
10	L	301[A]	BCB	O2D-CGD	5.44	1.46	1.33
10	M	403[A]	BCB	C3B-C2B	5.37	1.49	1.39
11	M	404	BPB	O2A-CGA	5.35	1.49	1.33
10	M	403[B]	BCB	C3B-C2B	5.35	1.49	1.39
13	M	402[A]	MQ7	C10-C5	5.33	1.49	1.40
10	L	301[B]	BCB	C3B-C2B	5.27	1.48	1.39
11	L	303[B]	BPB	O2D-CGD	5.19	1.45	1.33
10	L	301[A]	BCB	C3B-C2B	5.15	1.48	1.39
10	L	302[A]	BCB	C3B-C2B	5.12	1.48	1.39
10	L	302[B]	BCB	C3B-C2B	5.09	1.48	1.39
11	L	303[A]	BPB	C3B-C2B	5.08	1.48	1.39
11	L	303[A]	BPB	O2D-CGD	5.07	1.45	1.33
11	L	303[B]	BPB	C3D-C2D	5.04	1.48	1.39
11	M	404	BPB	C3D-C2D	5.03	1.48	1.39
5	C	401	HEC	C2B-C3B	-5.02	1.35	1.40
11	L	303[B]	BPB	OBD-CAD	4.98	1.29	1.22
11	M	404	BPB	O2D-CGD	4.96	1.45	1.33
10	L	302[B]	BCB	O2D-CGD	4.90	1.45	1.33
11	L	303[A]	BPB	C3D-C2D	4.87	1.48	1.39
10	L	304	BCB	O2D-CGD	4.83	1.45	1.33
10	L	304	BCB	C3B-C2B	4.78	1.48	1.39
11	M	404	BPB	C3B-C2B	4.75	1.47	1.39
11	M	404	BPB	OBD-CAD	4.73	1.28	1.22
10	L	302[A]	BCB	O2D-CGD	4.72	1.44	1.33
5	C	403	HEC	C2B-C3B	-4.69	1.35	1.40
13	M	402[B]	MQ7	C10-C5	4.62	1.48	1.40

Continued on next page...

Continued from previous page...

Mol	Chain	Res	Type	Atoms	Z	Observed(Å)	Ideal(Å)
5	C	404	HEC	C2B-C3B	-4.58	1.36	1.40
10	L	301[B]	BCB	C2C-C3C	-4.50	1.45	1.51
5	C	402	HEC	C2B-C3B	-4.46	1.36	1.40
10	L	301[A]	BCB	C2C-C3C	-4.45	1.46	1.51
10	L	302[B]	BCB	O2A-CGA	4.38	1.46	1.33
10	L	304	BCB	C2C-C3C	-4.33	1.46	1.51
10	M	403[A]	BCB	O2A-CGA	4.33	1.46	1.33
10	L	301[A]	BCB	O2A-CGA	4.32	1.46	1.33
11	L	303[A]	BPB	OBD-CAD	4.31	1.28	1.22
11	M	404	BPB	CHA-CBD	-4.31	1.47	1.52
10	L	304	BCB	O2A-CGA	4.26	1.45	1.33
10	L	301[B]	BCB	O2A-CGA	4.23	1.45	1.33
11	L	303[A]	BPB	O2A-CGA	4.19	1.45	1.33
11	L	303[B]	BPB	O2A-CGA	4.11	1.45	1.33
10	L	302[B]	BCB	OBD-CAD	4.09	1.29	1.22
10	M	403[B]	BCB	O2A-CGA	4.05	1.45	1.33
10	M	403[B]	BCB	OBD-CAD	4.02	1.29	1.22
10	L	301[B]	BCB	OBD-CAD	4.01	1.29	1.22
10	L	302[B]	BCB	CHD-C1D	4.00	1.46	1.38
10	L	302[A]	BCB	C2C-C3C	-3.98	1.46	1.51
10	L	301[B]	BCB	CHD-C1D	3.96	1.46	1.38
10	M	403[A]	BCB	C3D-C2D	3.95	1.49	1.39
10	L	302[A]	BCB	O2A-CGA	3.92	1.44	1.33
10	L	302[A]	BCB	CHD-C1D	3.86	1.45	1.38
10	L	301[A]	BCB	OBD-CAD	3.86	1.29	1.22
10	L	304	BCB	C3D-C2D	3.82	1.49	1.39
10	M	403[B]	BCB	CHD-C1D	3.81	1.45	1.38
10	L	301[A]	BCB	C3D-C2D	3.81	1.49	1.39
10	M	403[A]	BCB	CHD-C1D	3.80	1.45	1.38
5	C	404	HEC	C3C-C2C	-3.80	1.36	1.40
10	M	403[B]	BCB	C2C-C3C	-3.79	1.46	1.51
10	M	403[A]	BCB	OBD-CAD	3.75	1.28	1.22
10	L	302[B]	BCB	C2C-C3C	-3.73	1.46	1.51
10	L	302[A]	BCB	OBD-CAD	3.72	1.28	1.22
10	L	301[A]	BCB	CHD-C1D	3.70	1.45	1.38
10	L	304	BCB	CHD-C1D	3.68	1.45	1.38
10	M	403[B]	BCB	C3D-C2D	3.63	1.49	1.39
11	L	303[A]	BPB	CHA-CBD	-3.63	1.48	1.52
10	M	403[A]	BCB	C2C-C3C	-3.58	1.47	1.51
10	L	301[A]	BCB	C1D-ND	-3.53	1.33	1.37
11	L	303[B]	BPB	CHA-CBD	-3.53	1.48	1.52
10	L	302[B]	BCB	CHD-C4C	3.52	1.47	1.39

Continued on next page...

Continued from previous page...

Mol	Chain	Res	Type	Atoms	Z	Observed(Å)	Ideal(Å)
11	M	404	BPB	C4C-NC	-3.41	1.27	1.37
10	L	302[A]	BCB	C3D-C2D	3.41	1.48	1.39
5	C	403	HEC	C3C-C2C	-3.38	1.37	1.40
10	L	304	BCB	OBD-CAD	3.35	1.28	1.22
10	L	302[B]	BCB	C3D-C2D	3.32	1.48	1.39
10	L	301[B]	BCB	C3D-C2D	3.27	1.48	1.39
11	L	303[A]	BPB	C3A-C2A	-3.13	1.51	1.54
6	C	405	DGA	OG1-CA1	3.12	1.42	1.33
11	L	303[B]	BPB	C4C-NC	-3.10	1.28	1.37
10	L	301[B]	BCB	C1D-ND	-3.10	1.34	1.37
6	C	405	DGA	OG2-CB1	3.08	1.43	1.34
11	L	303[A]	BPB	C4C-NC	-3.07	1.28	1.37
10	L	304	BCB	CHD-C4C	3.02	1.46	1.39
10	L	302[A]	BCB	CHD-C4C	3.00	1.46	1.39
10	L	304	BCB	C4B-CHC	2.97	1.49	1.41
10	M	403[B]	BCB	CHD-C4C	2.93	1.45	1.39
10	M	403[B]	BCB	C1D-ND	-2.89	1.34	1.37
10	L	301[A]	BCB	C4B-CHC	2.86	1.48	1.41
5	C	401	HEC	C3C-C2C	-2.85	1.37	1.40
10	M	403[A]	BCB	CHD-C4C	2.85	1.45	1.39
10	L	301[B]	BCB	CHD-C4C	2.84	1.45	1.39
10	L	304	BCB	C1D-ND	-2.83	1.34	1.37
10	L	302[A]	BCB	C1D-ND	-2.81	1.34	1.37
6	C	405	DGA	OG2-CG2	-2.76	1.42	1.47
10	L	302[B]	BCB	C4B-CHC	2.74	1.48	1.41
10	M	403[A]	BCB	C4B-CHC	2.65	1.48	1.41
10	L	304	BCB	C1B-CHB	2.62	1.48	1.41
10	L	301[B]	BCB	C4B-CHC	2.58	1.48	1.41
10	L	302[B]	BCB	C1D-ND	-2.58	1.34	1.37
10	L	302[B]	BCB	C4B-NB	2.56	1.37	1.35
11	L	303[B]	BPB	C3A-C2A	-2.56	1.52	1.54
10	L	302[A]	BCB	C4B-CHC	2.56	1.48	1.41
10	M	403[A]	BCB	C1D-ND	-2.49	1.34	1.37
5	C	402	HEC	C3C-C2C	-2.47	1.38	1.40
5	C	403	HEC	C3C-C4C	2.45	1.47	1.43
10	M	403[B]	BCB	C4B-CHC	2.42	1.47	1.41
10	L	301[A]	BCB	CHD-C4C	2.41	1.44	1.39
10	L	301[A]	BCB	MG-NA	-2.37	2.00	2.06
5	C	403	HEC	CBA-CGA	2.35	1.56	1.50
10	M	403[B]	BCB	C4D-CHA	2.35	1.46	1.38
10	M	403[A]	BCB	C4D-CHA	2.32	1.46	1.38
10	L	302[B]	BCB	MG-NA	-2.30	2.00	2.06

Continued on next page...

Continued from previous page...

Mol	Chain	Res	Type	Atoms	Z	Observed(Å)	Ideal(Å)
10	L	301[B]	BCB	C1B-CHB	2.29	1.47	1.41
5	C	404	HEC	C3C-C4C	2.28	1.47	1.43
10	L	302[B]	BCB	C1B-CHB	2.28	1.47	1.41
10	L	302[A]	BCB	C1B-CHB	2.25	1.47	1.41
10	M	403[A]	BCB	C1B-CHB	2.25	1.47	1.41
10	L	301[B]	BCB	C4D-CHA	2.22	1.46	1.38
10	L	301[B]	BCB	MG-NA	-2.22	2.01	2.06
10	L	301[A]	BCB	C1B-CHB	2.22	1.47	1.41
10	L	302[A]	BCB	MG-NA	-2.22	2.01	2.06
10	M	403[A]	BCB	MG-NA	-2.21	2.01	2.06
5	C	403	HEC	C2A-C1A	2.17	1.47	1.42
10	L	302[B]	BCB	C3D-C4D	-2.16	1.39	1.44
10	L	302[A]	BCB	C4D-CHA	2.15	1.46	1.38
10	M	403[B]	BCB	C1B-CHB	2.15	1.47	1.41
10	L	301[A]	BCB	C4D-CHA	2.15	1.46	1.38
5	C	401	HEC	C3C-C4C	2.15	1.46	1.43
5	C	404	HEC	C4D-ND	2.10	1.40	1.36
5	C	401	HEC	CBD-CGD	2.10	1.55	1.50
10	M	403[B]	BCB	MG-NA	-2.06	2.01	2.06
10	L	304	BCB	C4D-CHA	2.05	1.45	1.38
10	L	302[B]	BCB	C4D-CHA	2.04	1.45	1.38
10	L	304	BCB	MG-NA	-2.02	2.01	2.06
5	C	402	HEC	CBA-CGA	2.01	1.55	1.50
11	M	404	BPB	C3A-C2A	-2.01	1.52	1.54

All (283) bond angle outliers are listed below:

Mol	Chain	Res	Type	Atoms	Z	Observed(°)	Ideal(°)
10	L	304	BCB	C1C-NC-C4C	-20.38	97.55	106.71
10	M	403[A]	BCB	C1C-NC-C4C	-19.33	98.01	106.71
10	L	301[A]	BCB	C1C-NC-C4C	-19.17	98.09	106.71
10	L	301[B]	BCB	C1C-NC-C4C	-18.59	98.35	106.71
10	M	403[B]	BCB	C1C-NC-C4C	-18.47	98.40	106.71
10	L	302[A]	BCB	C1C-NC-C4C	-16.80	99.15	106.71
10	L	302[B]	BCB	C1C-NC-C4C	-15.13	99.90	106.71
11	M	404	BPB	O2D-CGD-CBD	9.05	122.46	111.00
11	L	303[A]	BPB	O2D-CGD-CBD	8.11	121.28	111.00
10	M	403[B]	BCB	C4D-C3D-CAD	-6.87	100.00	108.10
10	M	403[A]	BCB	C4D-C3D-CAD	-6.74	100.15	108.10
11	L	303[B]	BPB	O2D-CGD-CBD	6.66	119.44	111.00
10	M	403[B]	BCB	O2D-CGD-CBD	6.62	123.02	111.27
10	M	403[A]	BCB	O2D-CGD-CBD	6.46	122.74	111.27

Continued on next page...

Continued from previous page...

Mol	Chain	Res	Type	Atoms	Z	Observed(°)	Ideal(°)
10	L	302[B]	BCB	CMD-C2D-C1D	6.44	136.07	124.71
10	L	304	BCB	C4D-C3D-CAD	-6.40	100.56	108.10
11	L	303[B]	BPB	CBC-CAC-C3C	-6.26	110.09	126.70
11	L	303[A]	BPB	CBC-CAC-C3C	-6.20	110.26	126.70
11	M	404	BPB	CBC-CAC-C3C	-6.09	110.53	126.70
10	L	302[A]	BCB	O2D-CGD-CBD	6.06	122.03	111.27
10	L	302[A]	BCB	C4D-C3D-CAD	-6.06	100.96	108.10
10	L	301[A]	BCB	C4D-C3D-CAD	-6.02	101.00	108.10
10	L	302[B]	BCB	O2D-CGD-CBD	5.88	121.71	111.27
10	L	302[A]	BCB	CMD-C2D-C1D	5.86	135.04	124.71
10	L	301[B]	BCB	C4D-C3D-CAD	-5.83	101.23	108.10
10	M	403[B]	BCB	CMD-C2D-C1D	5.58	134.55	124.71
10	L	302[B]	BCB	C4D-C3D-CAD	-5.58	101.52	108.10
10	L	302[B]	BCB	C3D-C4D-ND	5.55	119.22	110.24
14	M	405	NS5	C19-C20-C21	-5.52	119.44	127.31
10	L	301[B]	BCB	CMD-C2D-C1D	5.49	134.39	124.71
10	L	302[A]	BCB	C3D-C4D-ND	5.34	118.88	110.24
10	L	304	BCB	C3D-C4D-ND	5.34	118.87	110.24
10	L	302[B]	BCB	C1D-ND-C4D	-5.33	102.55	106.33
5	C	401	HEC	CBA-CAA-C2A	-5.31	103.66	112.60
10	L	301[B]	BCB	C3D-C4D-ND	5.15	118.57	110.24
10	L	301[A]	BCB	C3D-C4D-ND	5.14	118.55	110.24
10	L	304	BCB	C1D-ND-C4D	-5.02	102.77	106.33
10	L	301[A]	BCB	CMB-C2B-C3B	4.99	134.01	124.68
10	L	304	BCB	CMD-C2D-C1D	4.98	133.49	124.71
10	M	403[A]	BCB	C3D-C4D-ND	4.98	118.30	110.24
10	L	304	BCB	O2D-CGD-CBD	4.96	120.08	111.27
10	L	302[A]	BCB	C1D-ND-C4D	-4.95	102.82	106.33
10	L	301[B]	BCB	C1D-ND-C4D	-4.93	102.83	106.33
5	C	401	HEC	CBD-CAD-C3D	-4.88	104.29	112.62
10	M	403[A]	BCB	CMD-C2D-C1D	4.87	133.29	124.71
10	M	403[B]	BCB	O2D-CGD-O1D	-4.87	114.33	123.84
10	M	403[B]	BCB	C3D-C4D-ND	4.83	118.05	110.24
10	L	301[A]	BCB	O2D-CGD-CBD	4.77	119.74	111.27
10	L	301[B]	BCB	CMB-C2B-C3B	4.72	133.51	124.68
10	L	302[A]	BCB	C1-C2-C3	-4.64	118.02	126.04
10	L	301[B]	BCB	O2D-CGD-CBD	4.64	119.51	111.27
5	C	402	HEC	CBA-CAA-C2A	-4.61	104.84	112.60
10	L	301[A]	BCB	C1D-ND-C4D	-4.57	103.09	106.33
10	M	403[B]	BCB	C4A-NA-C1A	4.50	108.73	106.71
10	L	301[A]	BCB	CMD-C2D-C1D	4.46	132.58	124.71
10	L	304	BCB	CHC-C1C-NC	-4.39	118.44	124.51

Continued on next page...

Continued from previous page...

Mol	Chain	Res	Type	Atoms	Z	Observed(°)	Ideal(°)
10	L	302[B]	BCB	C2C-C1C-CHC	-4.38	113.34	123.64
10	L	302[B]	BCB	CMD-C2D-C3D	-4.35	117.61	127.61
10	M	403[A]	BCB	C1D-ND-C4D	-4.33	103.26	106.33
6	C	405	DGA	OG2-CB1-CB2	4.33	120.84	111.50
14	M	405	NS5	CM4-C36-C35	-4.26	110.32	122.65
11	L	303[B]	BPB	CMB-C2B-C3B	4.26	132.65	124.68
10	M	403[B]	BCB	CMB-C2B-C3B	4.25	132.64	124.68
10	M	403[A]	BCB	O2D-CGD-O1D	-4.25	115.53	123.84
10	L	302[A]	BCB	C2C-C1C-CHC	-4.23	113.67	123.64
10	L	304	BCB	C2C-C1C-CHC	-4.14	113.89	123.64
10	M	403[B]	BCB	C2C-C1C-CHC	-4.12	113.95	123.64
10	L	302[B]	BCB	C1-C2-C3	-4.08	118.98	126.04
5	C	401	HEC	CMC-C2C-C1C	-4.08	122.19	128.46
10	M	403[B]	BCB	C1D-ND-C4D	-4.07	103.44	106.33
14	M	405	NS5	C18-C17-C15	-4.06	121.52	127.31
10	M	403[A]	BCB	C2C-C1C-CHC	-4.06	114.09	123.64
10	L	301[A]	BCB	C4-C3-C5	4.00	122.01	115.27
10	L	302[B]	BCB	CMB-C2B-C3B	3.99	132.14	124.68
10	L	301[A]	BCB	CHC-C1C-NC	-3.94	119.07	124.51
11	M	404	BPB	C1A-C2A-C3A	-3.93	99.10	102.84
14	M	405	NS5	C34-C35-C36	-3.92	114.34	127.75
10	L	304	BCB	OBD-CAD-C3D	-3.90	119.13	128.52
10	L	301[B]	BCB	C2C-C1C-CHC	-3.88	114.50	123.64
10	L	301[A]	BCB	C2D-C1D-ND	3.88	112.96	110.10
10	M	403[A]	BCB	CAD-C3D-C2D	3.87	159.48	140.80
14	M	405	NS5	CM3-C36-C35	-3.86	111.49	122.65
5	C	403	HEC	CBD-CAD-C3D	-3.84	106.06	112.62
10	M	403[B]	BCB	CAD-C3D-C2D	3.81	159.18	140.80
10	M	403[A]	BCB	CMB-C2B-C3B	3.81	131.80	124.68
10	L	304	BCB	CAD-C3D-C2D	3.80	159.13	140.80
10	L	302[A]	BCB	CAD-C3D-C2D	3.77	158.97	140.80
11	L	303[A]	BPB	CMB-C2B-C3B	3.76	131.71	124.68
10	L	302[A]	BCB	CMD-C2D-C3D	-3.74	119.02	127.61
10	L	301[A]	BCB	CAD-C3D-C2D	3.72	158.74	140.80
11	M	404	BPB	O2A-CGA-CBA	3.68	123.45	111.91
10	L	302[B]	BCB	CAD-C3D-C2D	3.67	158.52	140.80
10	M	403[B]	BCB	OBD-CAD-C3D	-3.65	119.73	128.52
10	L	301[B]	BCB	CAD-C3D-C2D	3.64	158.35	140.80
5	C	401	HEC	CMC-C2C-C3C	3.63	130.09	125.82
10	L	301[B]	BCB	C4-C3-C5	3.62	121.37	115.27
10	L	302[A]	BCB	CMB-C2B-C3B	3.61	131.44	124.68
14	M	405	NS5	C11-C10-C9	3.61	121.35	115.27

Continued on next page...

Continued from previous page...

Mol	Chain	Res	Type	Atoms	Z	Observed(°)	Ideal(°)
10	M	403[B]	BCB	CHC-C1C-NC	-3.60	119.54	124.51
10	M	403[B]	BCB	C1-C2-C3	-3.60	119.83	126.04
10	L	302[A]	BCB	O1D-CGD-CBD	-3.56	117.20	124.48
10	L	304	BCB	C2D-C1D-ND	3.53	112.71	110.10
5	C	404	HEC	CMB-C2B-C1B	-3.53	123.04	128.46
10	L	301[A]	BCB	O2A-CGA-CBA	3.52	122.94	111.91
10	M	403[A]	BCB	C4A-NA-C1A	3.49	108.28	106.71
10	L	302[A]	BCB	OBD-CAD-C3D	-3.49	120.12	128.52
10	M	403[A]	BCB	CHC-C1C-NC	-3.49	119.69	124.51
5	C	404	HEC	CBD-CAD-C3D	3.47	118.54	112.62
10	L	302[B]	BCB	OBD-CAD-C3D	-3.46	120.20	128.52
11	M	404	BPB	O1D-CGD-CBD	-3.44	119.00	124.74
10	L	301[A]	BCB	C2C-C1C-CHC	-3.44	115.55	123.64
11	M	404	BPB	CMC-C2C-C1C	-3.43	108.60	114.36
11	L	303[B]	BPB	CMD-C2D-C3D	-3.42	118.28	124.68
5	C	404	HEC	CBA-CAA-C2A	-3.39	106.89	112.60
11	L	303[A]	BPB	C3D-CAD-CBD	3.39	112.06	107.61
10	M	403[A]	BCB	C1D-CHD-C4C	-3.36	118.81	126.06
5	C	402	HEC	CMC-C2C-C1C	-3.35	123.31	128.46
10	M	403[A]	BCB	C2D-C1D-ND	3.33	112.56	110.10
10	L	301[B]	BCB	CMD-C2D-C3D	-3.33	119.95	127.61
10	L	301[B]	BCB	OBD-CAD-C3D	-3.33	120.51	128.52
10	L	301[B]	BCB	CHC-C1C-NC	-3.32	119.92	124.51
10	M	403[B]	BCB	CMD-C2D-C3D	-3.30	120.03	127.61
10	L	302[B]	BCB	C6-C5-C3	-3.29	104.82	113.45
11	L	303[A]	BPB	C4A-C3A-C2A	-3.29	99.71	102.84
10	L	301[B]	BCB	C2D-C1D-ND	3.28	112.52	110.10
5	C	404	HEC	CAD-CBD-CGD	-3.25	104.65	113.76
5	C	402	HEC	CMD-C2D-C1D	-3.25	123.47	128.46
5	C	403	HEC	CMC-C2C-C1C	-3.24	123.48	128.46
11	L	303[B]	BPB	CMC-C2C-C1C	-3.24	108.92	114.36
13	M	402[A]	MQ7	C39-C38-C40	3.24	120.72	115.27
10	M	403[B]	BCB	C1D-CHD-C4C	-3.24	119.08	126.06
13	M	402[A]	MQ7	C29-C28-C30	3.17	120.61	115.27
10	L	301[A]	BCB	OBD-CAD-C3D	-3.14	120.95	128.52
11	M	404	BPB	C1-O2A-CGA	3.14	124.67	116.44
10	M	403[B]	BCB	CGD-CBD-CAD	-3.13	100.61	110.73
13	M	402[B]	MQ7	C39-C38-C40	3.12	120.52	115.27
10	L	301[A]	BCB	CHD-C4C-C3C	-3.10	122.01	125.89
10	L	304	BCB	CMB-C2B-C3B	3.09	130.45	124.68
5	C	404	HEC	CMB-C2B-C3B	3.08	129.44	125.82
10	L	302[B]	BCB	O2A-CGA-CBA	3.04	121.46	111.91

Continued on next page...

Continued from previous page...

Mol	Chain	Res	Type	Atoms	Z	Observed(°)	Ideal(°)
11	L	303[B]	BPB	O1D-CGD-CBD	-3.04	119.68	124.74
10	L	304	BCB	C1-C2-C3	-3.03	120.80	126.04
11	M	404	BPB	CMD-C2D-C3D	-3.01	119.05	124.68
5	C	404	HEC	CMC-C2C-C1C	-3.00	123.85	128.46
10	L	302[A]	BCB	C2D-C1D-ND	3.00	112.31	110.10
10	L	302[A]	BCB	C6-C5-C3	-3.00	105.60	113.45
11	L	303[A]	BPB	CMD-C2D-C3D	-2.99	119.08	124.68
10	L	301[B]	BCB	O2A-CGA-CBA	2.98	121.25	111.91
6	C	405	DGA	OG1-CA1-CA2	2.97	121.24	111.91
10	L	301[A]	BCB	O2D-CGD-O1D	-2.97	118.04	123.84
10	M	403[B]	BCB	C2D-C1D-ND	2.97	112.29	110.10
10	M	403[A]	BCB	OBD-CAD-C3D	-2.95	121.43	128.52
14	M	405	NS5	C32-C31-C33	2.92	120.18	115.27
10	L	301[B]	BCB	O2D-CGD-O1D	-2.92	118.14	123.84
10	L	301[B]	BCB	CHD-C4C-C3C	-2.90	122.26	125.89
5	C	402	HEC	CMB-C2B-C1B	-2.90	124.01	128.46
10	L	302[B]	BCB	CHD-C1D-ND	-2.90	121.79	124.45
10	L	304	BCB	O2A-CGA-CBA	2.89	120.99	111.91
13	M	402[A]	MQ7	C34-C33-C35	2.89	120.14	115.27
10	L	304	BCB	C4-C3-C5	2.88	120.12	115.27
5	C	403	HEC	CBA-CAA-C2A	-2.86	107.78	112.60
11	L	303[B]	BPB	CED-O2D-CGD	2.83	122.33	115.94
11	L	303[A]	BPB	O1D-CGD-CBD	-2.83	120.03	124.74
10	L	302[A]	BCB	C1D-CHD-C4C	-2.81	119.99	126.06
13	M	402[B]	MQ7	C29-C28-C30	2.81	120.00	115.27
10	L	304	BCB	CMD-C2D-C3D	-2.80	121.16	127.61
10	L	301[B]	BCB	C1-C2-C3	-2.80	121.20	126.04
10	M	403[A]	BCB	CMD-C2D-C3D	-2.80	121.17	127.61
11	L	303[A]	BPB	CMC-C2C-C1C	-2.80	109.66	114.36
5	C	402	HEC	CMC-C2C-C3C	2.79	129.11	125.82
10	L	301[A]	BCB	CHB-C4A-NA	2.78	128.35	124.51
6	C	405	DGA	OG2-CG2-CG1	2.76	112.52	106.13
11	L	303[A]	BPB	O2A-CGA-CBA	2.75	120.54	111.91
10	M	403[A]	BCB	O2A-CGA-O1A	-2.74	116.67	123.59
13	M	402[A]	MQ7	C16-C17-C18	-2.73	121.09	127.66
13	M	402[B]	MQ7	C31-C32-C33	-2.72	121.11	127.66
11	M	404	BPB	O2D-CGD-O1D	-2.71	118.54	123.84
10	L	302[B]	BCB	O1D-CGD-CBD	-2.71	118.94	124.48
10	M	403[B]	BCB	CHB-C4A-NA	2.70	128.24	124.51
13	M	402[A]	MQ7	C19-C18-C20	2.70	119.81	115.27
11	L	303[A]	BPB	CMA-C3A-C4A	-2.69	108.47	114.38
10	L	302[A]	BCB	CHC-C1C-NC	-2.68	120.81	124.51

Continued on next page...

Continued from previous page...

Mol	Chain	Res	Type	Atoms	Z	Observed(°)	Ideal(°)
10	M	403[A]	BCB	CHB-C4A-NA	2.64	128.17	124.51
10	M	403[A]	BCB	O2A-CGA-CBA	2.64	120.20	111.91
10	L	304	BCB	CHA-C4D-ND	-2.64	126.98	132.50
11	M	404	BPB	C3D-CAD-CBD	2.64	111.08	107.61
11	L	303[A]	BPB	O2D-CGD-O1D	-2.63	118.69	123.84
10	L	302[A]	BCB	O2A-CGA-O1A	-2.60	117.03	123.59
13	M	402[A]	MQ7	C12-C11-C3	-2.59	105.05	112.05
10	L	304	BCB	C2A-C1A-CHA	-2.59	119.33	123.86
10	M	403[B]	BCB	CHA-C4D-ND	-2.58	127.11	132.50
13	M	402[B]	MQ7	C16-C17-C18	-2.57	121.46	127.66
10	L	302[A]	BCB	C4-C3-C5	2.57	119.60	115.27
5	C	401	HEC	CMB-C2B-C1B	-2.57	124.52	128.46
11	L	303[B]	BPB	C4-C3-C5	2.56	119.58	115.27
10	L	301[A]	BCB	C1D-CHD-C4C	-2.56	120.54	126.06
10	M	403[A]	BCB	CAA-C2A-C1A	2.56	120.35	111.97
10	M	403[A]	BCB	CHA-C4D-ND	-2.55	127.16	132.50
11	L	303[B]	BPB	C4A-C3A-C2A	-2.55	100.42	102.84
10	L	301[B]	BCB	C1D-CHD-C4C	-2.55	120.57	126.06
10	L	301[A]	BCB	C4A-NA-C1A	2.54	107.85	106.71
11	M	404	BPB	CMA-C3A-C4A	-2.54	108.82	114.38
10	L	302[B]	BCB	C2D-C1D-ND	2.53	111.97	110.10
10	L	302[A]	BCB	CHA-C4D-ND	-2.52	127.22	132.50
10	L	302[A]	BCB	O2A-CGA-CBA	2.52	119.81	111.91
10	L	301[A]	BCB	O2A-CGA-O1A	-2.52	117.24	123.59
11	L	303[B]	BPB	O2A-CGA-CBA	2.51	119.80	111.91
13	M	402[B]	MQ7	C24-C23-C25	2.51	119.49	115.27
5	C	403	HEC	CMC-C2C-C3C	2.50	128.76	125.82
10	L	301[A]	BCB	CHA-C4D-ND	-2.50	127.28	132.50
10	L	302[B]	BCB	CHA-C4D-ND	-2.49	127.28	132.50
11	M	404	BPB	O2A-C1-C2	2.49	115.17	108.64
13	M	402[A]	MQ7	C45-C43-C44	2.48	120.07	114.60
10	L	301[A]	BCB	CED-O2D-CGD	2.47	121.52	115.94
5	C	403	HEC	CMD-C2D-C1D	-2.47	124.67	128.46
13	M	402[B]	MQ7	C21-C22-C23	-2.45	121.75	127.66
14	M	405	NS5	C6-C5-C4	2.45	119.39	115.27
10	L	301[B]	BCB	O2A-CGA-O1A	-2.45	117.42	123.59
10	L	304	BCB	O2D-CGD-O1D	-2.45	119.05	123.84
5	C	402	HEC	CAD-CBD-CGD	-2.44	106.91	113.76
13	M	402[B]	MQ7	C14-C13-C15	2.44	119.38	115.27
14	M	405	NS5	C18-C19-C20	2.43	128.46	123.47
5	C	404	HEC	CMA-C3A-C2A	2.43	129.52	124.94
10	L	301[B]	BCB	CHA-C4D-ND	-2.43	127.42	132.50

Continued on next page...

Continued from previous page...

Mol	Chain	Res	Type	Atoms	Z	Observed(°)	Ideal(°)
10	L	302[B]	BCB	C1D-CHD-C4C	-2.41	120.86	126.06
10	L	302[A]	BCB	CHD-C1D-ND	-2.41	122.24	124.45
10	L	302[B]	BCB	CHB-C4A-NA	2.41	127.84	124.51
13	M	402[B]	MQ7	C26-C27-C28	-2.37	121.95	127.66
10	L	301[B]	BCB	CHB-C4A-NA	2.36	127.78	124.51
10	M	403[B]	BCB	O2A-CGA-O1A	-2.35	117.65	123.59
11	L	303[A]	BPB	C4-C3-C5	2.35	119.23	115.27
10	L	301[A]	BCB	CAA-CBA-CGA	-2.34	106.41	113.25
10	L	304	BCB	C1D-CHD-C4C	-2.33	121.02	126.06
13	M	402[A]	MQ7	C24-C23-C25	2.33	119.20	115.27
5	C	403	HEC	CMA-C3A-C2A	2.33	129.34	124.94
10	M	403[B]	BCB	C4D-CHA-C1A	2.33	124.08	121.25
14	M	405	NS5	C12-C13-C14	-2.32	115.98	123.22
10	L	301[A]	BCB	CMD-C2D-C3D	-2.32	122.28	127.61
9	L	306	HTO	C5-C4-C3	-2.32	110.37	114.18
10	L	302[B]	BCB	O2D-CGD-O1D	-2.30	119.35	123.84
10	L	302[B]	BCB	C4-C3-C5	2.27	119.09	115.27
8	H	707	LDA	CM2-N1-C1	-2.26	105.49	110.23
10	L	302[A]	BCB	CHB-C4A-NA	2.26	127.63	124.51
5	C	404	HEC	CMC-C2C-C3C	2.23	128.44	125.82
10	L	302[B]	BCB	C2A-C1A-CHA	-2.23	119.96	123.86
14	M	405	NS5	C8-C9-C10	-2.22	105.66	112.98
13	M	402[A]	MQ7	C14-C13-C15	2.22	119.01	115.27
10	M	403[A]	BCB	C1B-CHB-C4A	-2.22	125.71	130.12
13	M	402[A]	MQ7	C26-C27-C28	-2.22	122.31	127.66
11	L	303[A]	BPB	CBA-CAA-C2A	-2.21	107.36	113.81
10	M	403[B]	BCB	CHD-C1D-ND	-2.18	122.45	124.45
10	M	403[A]	BCB	CHD-C4C-C3C	-2.18	123.16	125.89
13	M	402[B]	MQ7	C34-C33-C35	2.18	118.94	115.27
5	C	403	HEC	CAA-CBA-CGA	-2.16	107.71	113.76
10	L	301[B]	BCB	CAA-C2A-C1A	2.15	119.02	111.97
10	L	302[A]	BCB	CED-O2D-CGD	2.15	120.79	115.94
10	M	403[B]	BCB	C4-C3-C5	2.14	118.87	115.27
5	C	403	HEC	C1D-C2D-C3D	2.14	108.48	107.00
11	L	303[B]	BPB	C16-C15-C13	-2.13	109.03	115.92
5	C	403	HEC	O2D-CGD-CBD	2.13	120.88	114.03
10	M	403[A]	BCB	C4B-CHC-C1C	-2.13	125.90	130.12
10	L	304	BCB	CHB-C4A-NA	2.12	127.44	124.51
11	L	303[B]	BPB	CMA-C3A-C4A	-2.11	109.75	114.38
10	L	304	BCB	CHD-C4C-C3C	-2.11	123.25	125.89
10	M	403[B]	BCB	CHD-C4C-C3C	-2.10	123.26	125.89
14	M	405	NS5	C22-C21-C20	-2.10	119.98	122.92

Continued on next page...

Continued from previous page...

Mol	Chain	Res	Type	Atoms	Z	Observed(°)	Ideal(°)
13	M	402[B]	MQ7	C45-C43-C44	2.09	119.22	114.60
11	M	404	BPB	C4A-C3A-C2A	-2.09	100.85	102.84
5	C	401	HEC	CMB-C2B-C3B	2.07	128.26	125.82
10	L	301[B]	BCB	C4A-NA-C1A	2.07	107.64	106.71
5	C	401	HEC	O2D-CGD-CBD	2.07	120.68	114.03
10	L	302[B]	BCB	CED-O2D-CGD	2.03	120.53	115.94
5	C	403	HEC	CMB-C2B-C1B	-2.03	125.34	128.46
5	C	403	HEC	O2A-CGA-CBA	2.02	120.53	114.03
6	C	405	DGA	OG1-CA1-OA1	-2.02	118.48	123.59
11	L	303[B]	BPB	C3D-CAD-CBD	2.02	110.26	107.61
5	C	402	HEC	CMB-C2B-C3B	2.02	128.19	125.82
10	M	403[B]	BCB	O2A-CGA-CBA	2.01	118.22	111.91
10	L	301[A]	BCB	C1-C2-C3	-2.01	122.56	126.04
11	M	404	BPB	CMB-C2B-C3B	2.01	128.44	124.68
10	L	301[A]	BCB	C4B-CHC-C1C	-2.01	126.14	130.12
11	L	303[A]	BPB	CAA-C2A-C3A	-2.01	107.28	112.78
10	L	302[A]	BCB	CHD-C4C-C3C	-2.00	123.39	125.89

All (19) chirality outliers are listed below:

Mol	Chain	Res	Type	Atom
10	L	301[A]	BCB	NA
10	L	301[A]	BCB	NC
10	L	301[A]	BCB	ND
10	L	301[B]	BCB	NA
10	L	301[B]	BCB	NC
10	L	301[B]	BCB	ND
10	L	302[A]	BCB	NA
10	L	302[A]	BCB	NC
10	L	302[B]	BCB	NA
10	L	302[B]	BCB	NC
10	L	304	BCB	NA
10	L	304	BCB	NC
10	L	304	BCB	ND
10	M	403[A]	BCB	NA
10	M	403[A]	BCB	NC
10	M	403[A]	BCB	ND
10	M	403[B]	BCB	NA
10	M	403[B]	BCB	NC
10	M	403[B]	BCB	ND

All (163) torsion outliers are listed below:

Mol	Chain	Res	Type	Atoms
6	C	405	DGA	OG1-CG1-CG2-OG2
6	C	405	DGA	OG1-CG1-CG2-CG3
8	H	706	LDA	C2-C1-N1-O1
8	H	706	LDA	C2-C1-N1-CM1
8	H	706	LDA	C2-C1-N1-CM2
8	H	706	LDA	N1-C1-C2-C3
8	H	707	LDA	C2-C1-N1-O1
8	H	707	LDA	C2-C1-N1-CM1
8	H	707	LDA	N1-C1-C2-C3
9	L	306	HTO	O2-C2-C3-C4
10	L	301[A]	BCB	C2-C3-C5-C6
10	L	301[A]	BCB	C4-C3-C5-C6
10	L	301[B]	BCB	C4-C3-C5-C6
10	L	302[A]	BCB	C2C-C3C-CAC-CBC
10	L	302[B]	BCB	C2C-C3C-CAC-CBC
10	M	403[A]	BCB	C2C-C3C-CAC-CBC
10	M	403[A]	BCB	CHA-CBD-CGD-O1D
10	M	403[A]	BCB	CHA-CBD-CGD-O2D
10	M	403[A]	BCB	CAD-CBD-CGD-O1D
10	M	403[A]	BCB	CAD-CBD-CGD-O2D
10	M	403[B]	BCB	C2C-C3C-CAC-CBC
11	L	303[A]	BPB	C2C-C3C-CAC-CBC
11	L	303[B]	BPB	C2C-C3C-CAC-CBC
11	M	404	BPB	C2C-C3C-CAC-CBC
14	M	405	NS5	C13-C14-C15-C16
14	M	405	NS5	C13-C14-C15-C17
14	M	405	NS5	C34-C35-C36-CM3
10	L	304	BCB	CBD-CGD-O2D-CED
10	L	301[B]	BCB	C2-C3-C5-C6
10	M	403[A]	BCB	C2A-CAA-CBA-CGA
14	M	405	NS5	C34-C35-C36-CM4
11	M	404	BPB	CBA-CGA-O2A-C1
11	M	404	BPB	O1A-CGA-O2A-C1
10	L	304	BCB	O1D-CGD-O2D-CED
6	C	405	DGA	CA2-CA1-OG1-CG1
6	C	405	DGA	OA1-CA1-OG1-CG1
10	L	302[B]	BCB	C13-C15-C16-C17
10	L	304	BCB	C5-C6-C7-C8
10	L	301[B]	BCB	C15-C16-C17-C18
10	M	403[A]	BCB	C15-C16-C17-C18
10	M	403[B]	BCB	C8-C10-C11-C12
14	M	405	NS5	C7-C8-C9-C10
10	L	301[A]	BCB	C13-C15-C16-C17

Continued on next page...

Continued from previous page...

Mol	Chain	Res	Type	Atoms
10	L	304	BCB	C3-C5-C6-C7
8	H	707	LDA	C2-C3-C4-C5
8	H	707	LDA	C4-C5-C6-C7
8	L	305	LDA	C2-C3-C4-C5
6	C	405	DGA	CCB-CDB-CEB-CFB
11	L	303[A]	BPB	C4-C3-C5-C6
10	L	302[A]	BCB	C14-C13-C15-C16
8	H	707	LDA	C6-C7-C8-C9
14	M	405	NS5	C31-C33-C34-C35
6	C	405	DGA	CBB-CAB-CB9-CB8
5	C	401	HEC	C2A-CAA-CBA-CGA
11	L	303[A]	BPB	O2A-C1-C2-C3
11	L	303[B]	BPB	C8-C10-C11-C12
11	L	303[A]	BPB	C2-C3-C5-C6
11	L	303[A]	BPB	C8-C10-C11-C12
10	M	403[A]	BCB	C8-C10-C11-C12
6	C	405	DGA	CAB-CBB-CCB-CDB
10	M	403[A]	BCB	C13-C15-C16-C17
8	L	305	LDA	C1-C2-C3-C4
10	L	302[A]	BCB	C12-C13-C15-C16
11	L	303[A]	BPB	CBD-CGD-O2D-CED
8	H	706	LDA	C3-C4-C5-C6
10	L	302[B]	BCB	C8-C10-C11-C12
14	M	405	NS5	C3-C4-C5-C6
8	H	701	LDA	C6-C7-C8-C9
8	L	305	LDA	C5-C6-C7-C8
9	H	708	HTO	O1-C1-C2-O2
5	C	404	HEC	C3D-CAD-CBD-CGD
10	L	301[A]	BCB	C15-C16-C17-C18
10	M	403[A]	BCB	C12-C13-C15-C16
10	M	403[A]	BCB	C14-C13-C15-C16
8	H	706	LDA	C6-C7-C8-C9
9	L	306	HTO	C4-C5-C6-C7
14	M	405	NS5	C10-C12-C13-C14
8	H	707	LDA	C11-C10-C9-C8
11	L	303[B]	BPB	O2A-C1-C2-C3
8	L	305	LDA	C4-C5-C6-C7
9	L	306	HTO	O1-C1-C2-O2
11	M	404	BPB	C10-C11-C12-C13
11	L	303[B]	BPB	C4-C3-C5-C6
10	L	302[A]	BCB	C13-C15-C16-C17
10	L	301[B]	BCB	C13-C15-C16-C17

Continued on next page...

Continued from previous page...

Mol	Chain	Res	Type	Atoms
11	M	404	BPB	C15-C16-C17-C18
11	L	303[A]	BPB	O1D-CGD-O2D-CED
10	L	301[B]	BCB	C11-C12-C13-C15
10	L	302[B]	BCB	C11-C10-C8-C7
10	L	304	BCB	C11-C10-C8-C7
11	L	303[B]	BPB	C2-C3-C5-C6
10	M	403[B]	BCB	CBA-CGA-O2A-C1
11	M	404	BPB	C16-C17-C18-C20
10	L	304	BCB	CAD-CBD-CGD-O2D
6	C	405	DGA	CBB-CCB-CDB-CEB
8	H	707	LDA	C2-C1-N1-CM2
10	L	302[B]	BCB	CHA-CBD-CGD-O1D
10	L	302[B]	BCB	CHA-CBD-CGD-O2D
6	C	405	DGA	CB9-CAB-CBB-CCB
10	L	304	BCB	C8-C10-C11-C12
10	M	403[B]	BCB	O1A-CGA-O2A-C1
10	L	301[B]	BCB	CBA-CGA-O2A-C1
8	H	707	LDA	C5-C6-C7-C8
10	L	301[A]	BCB	C2C-C3C-CAC-CBC
10	L	301[A]	BCB	CAD-CBD-CGD-O1D
10	L	301[B]	BCB	CAD-CBD-CGD-O1D
10	L	304	BCB	C2C-C3C-CAC-CBC
5	C	402	HEC	C3D-CAD-CBD-CGD
10	M	403[B]	BCB	C12-C13-C15-C16
10	L	301[B]	BCB	O1A-CGA-O2A-C1
5	C	404	HEC	C2D-C3D-CAD-CBD
5	C	404	HEC	C4D-C3D-CAD-CBD
8	H	701	LDA	C2-C3-C4-C5
10	L	301[B]	BCB	C16-C17-C18-C19
10	L	304	BCB	C4-C3-C5-C6
14	M	405	NS5	C3-C4-C5-C7
9	L	306	HTO	O2-C2-C3-O3
10	L	304	BCB	C11-C10-C8-C9
10	M	403[B]	BCB	C14-C13-C15-C16
6	C	405	DGA	CA6-CA7-CA8-CA9
6	C	405	DGA	CA7-CA8-CA9-CAA
11	M	404	BPB	C16-C17-C18-C19
8	H	701	LDA	C9-C10-C11-C12
14	M	405	NS5	C23-C24-C25-C26
6	C	405	DGA	CB2-CB3-CB4-CB5
8	L	305	LDA	C3-C4-C5-C6
11	M	404	BPB	C14-C13-C15-C16

Continued on next page...

Continued from previous page...

Mol	Chain	Res	Type	Atoms
11	L	303[B]	BPB	C5-C6-C7-C8
6	C	405	DGA	CB6-CB7-CB8-CB9
10	L	304	BCB	C2-C3-C5-C6
10	L	302[A]	BCB	CBD-CGD-O2D-CED
5	C	401	HEC	CAA-CBA-CGA-O2A
10	M	403[A]	BCB	C5-C6-C7-C8
10	L	301[B]	BCB	C11-C12-C13-C14
10	L	302[B]	BCB	C11-C10-C8-C9
8	H	707	LDA	C3-C4-C5-C6
11	L	303[A]	BPB	CAD-CBD-CGD-O2D
8	H	701	LDA	C5-C6-C7-C8
13	M	402[B]	MQ7	C39-C38-C40-C41
10	M	403[B]	BCB	C16-C17-C18-C20
6	C	405	DGA	CB4-CB5-CB6-CB7
10	M	403[A]	BCB	O2A-C1-C2-C3
10	M	403[B]	BCB	O2A-C1-C2-C3
10	L	304	BCB	CHA-CBD-CGD-O1D
10	L	304	BCB	CHA-CBD-CGD-O2D
13	M	402[B]	MQ7	C37-C38-C40-C41
5	C	401	HEC	CAA-CBA-CGA-O1A
5	C	404	HEC	CAD-CBD-CGD-O2D
11	L	303[B]	BPB	CHA-CBD-CGD-O1D
10	L	302[A]	BCB	C1A-C2A-CAA-CBA
10	L	302[B]	BCB	C16-C17-C18-C19
5	C	402	HEC	CAA-CBA-CGA-O1A
8	L	305	LDA	C2-C1-N1-O1
10	L	302[B]	BCB	C14-C13-C15-C16
10	L	304	BCB	C11-C12-C13-C14
6	C	405	DGA	CA3-CA4-CA5-CA6
10	L	301[B]	BCB	CAA-CBA-CGA-O2A
10	L	301[A]	BCB	C6-C7-C8-C10
10	L	302[B]	BCB	C12-C13-C15-C16
5	C	404	HEC	CAD-CBD-CGD-O1D
5	C	402	HEC	CAA-CBA-CGA-O2A
10	L	302[B]	BCB	C2A-CAA-CBA-CGA
8	H	707	LDA	C9-C10-C11-C12

There are no ring outliers.

20 monomers are involved in 44 short contacts:

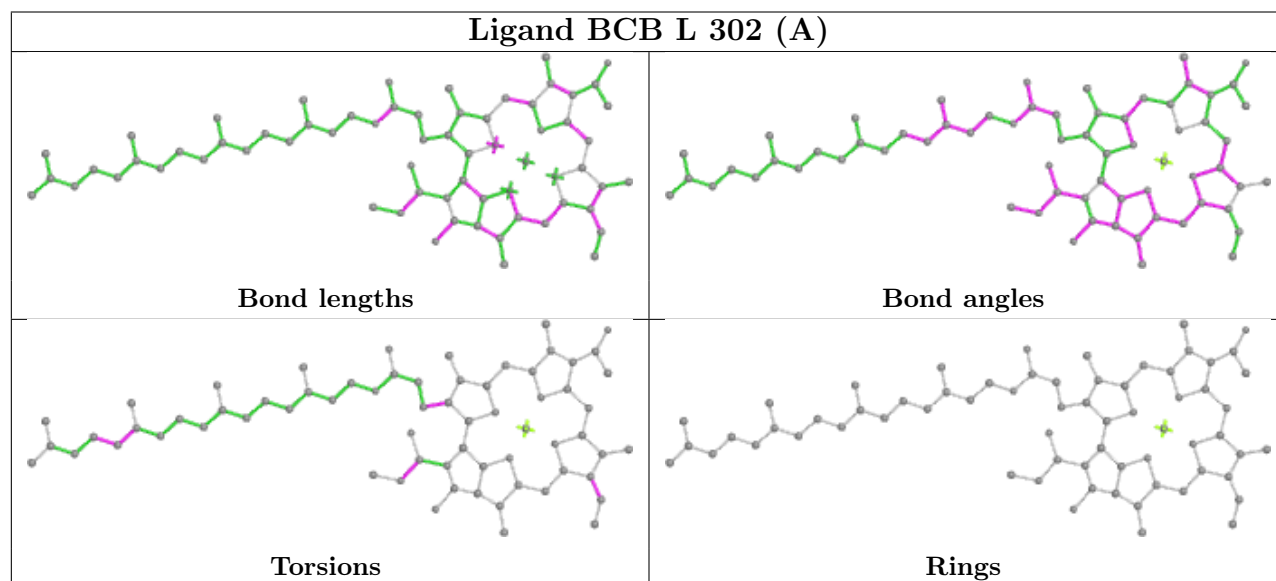
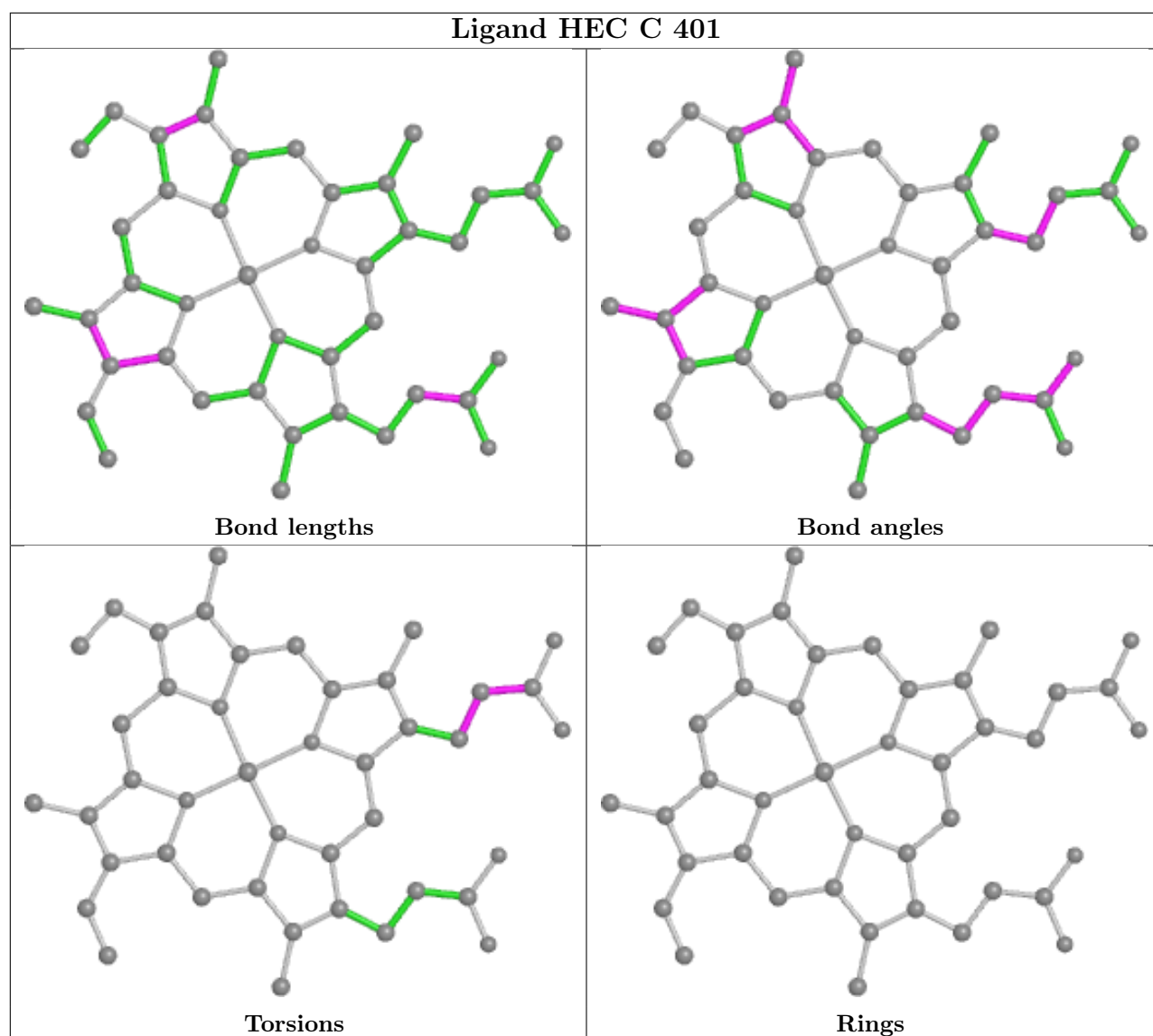
Mol	Chain	Res	Type	Clashes	Symm-Clashes
5	C	401	HEC	1	0

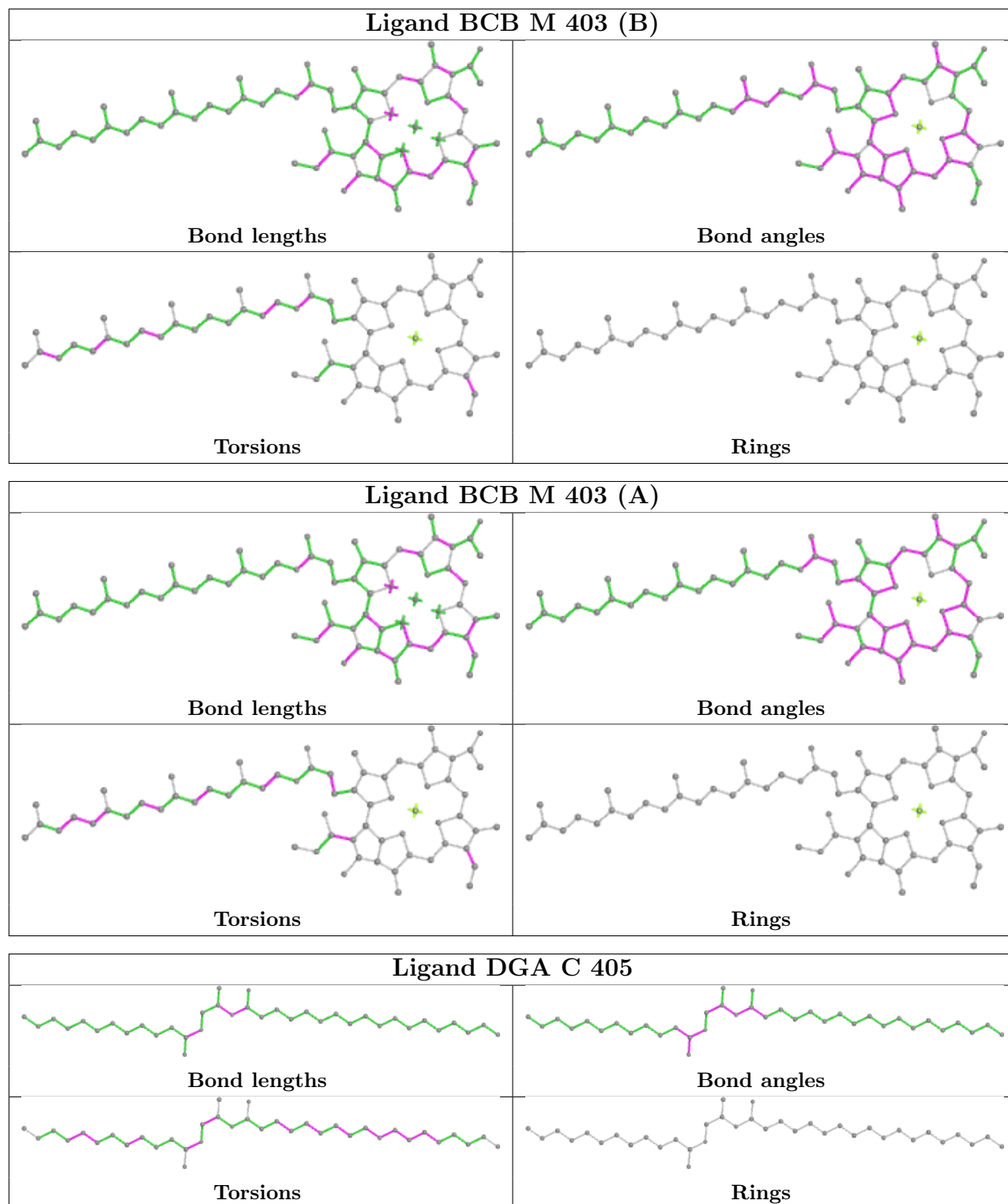
Continued on next page...

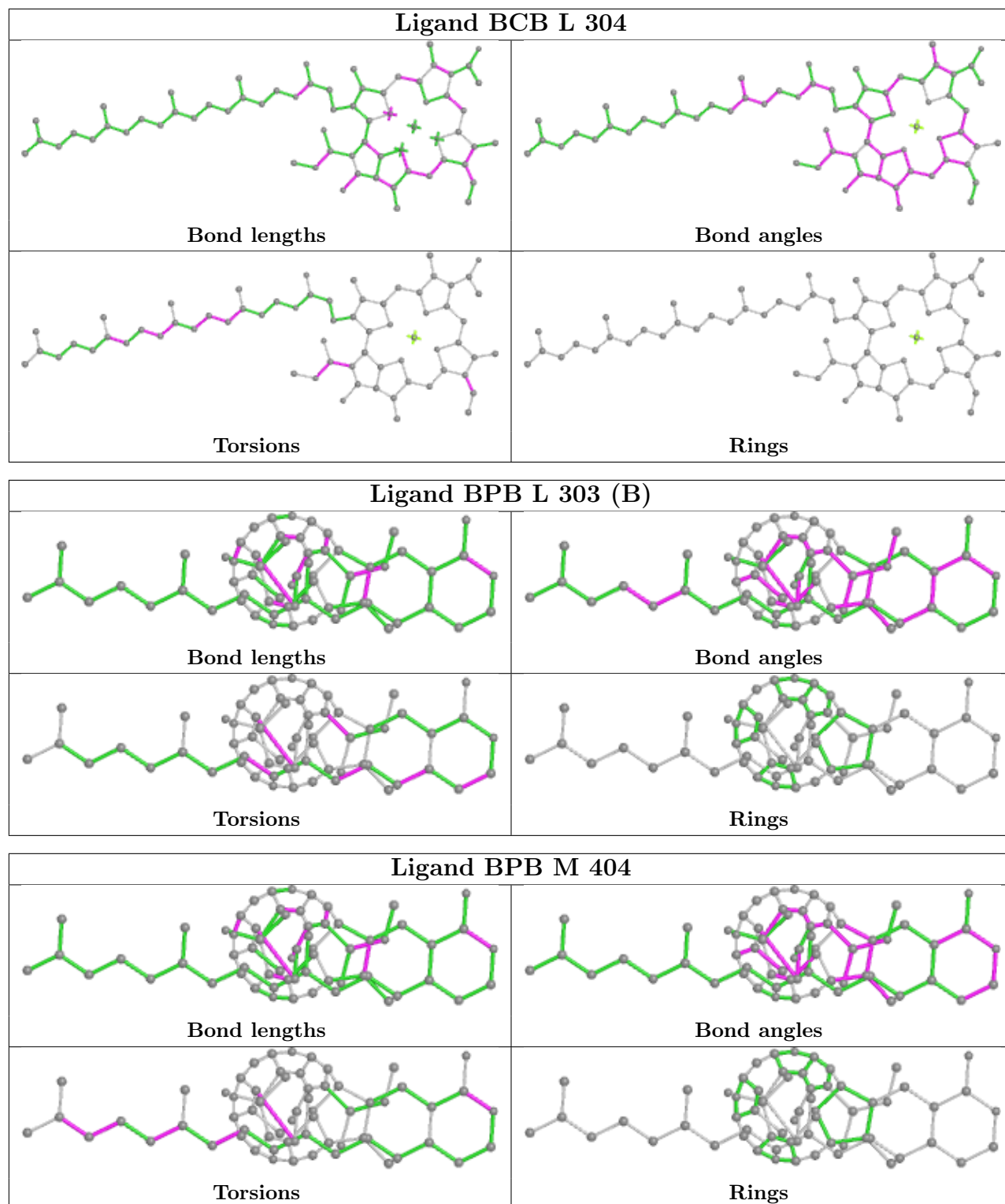
Continued from previous page...

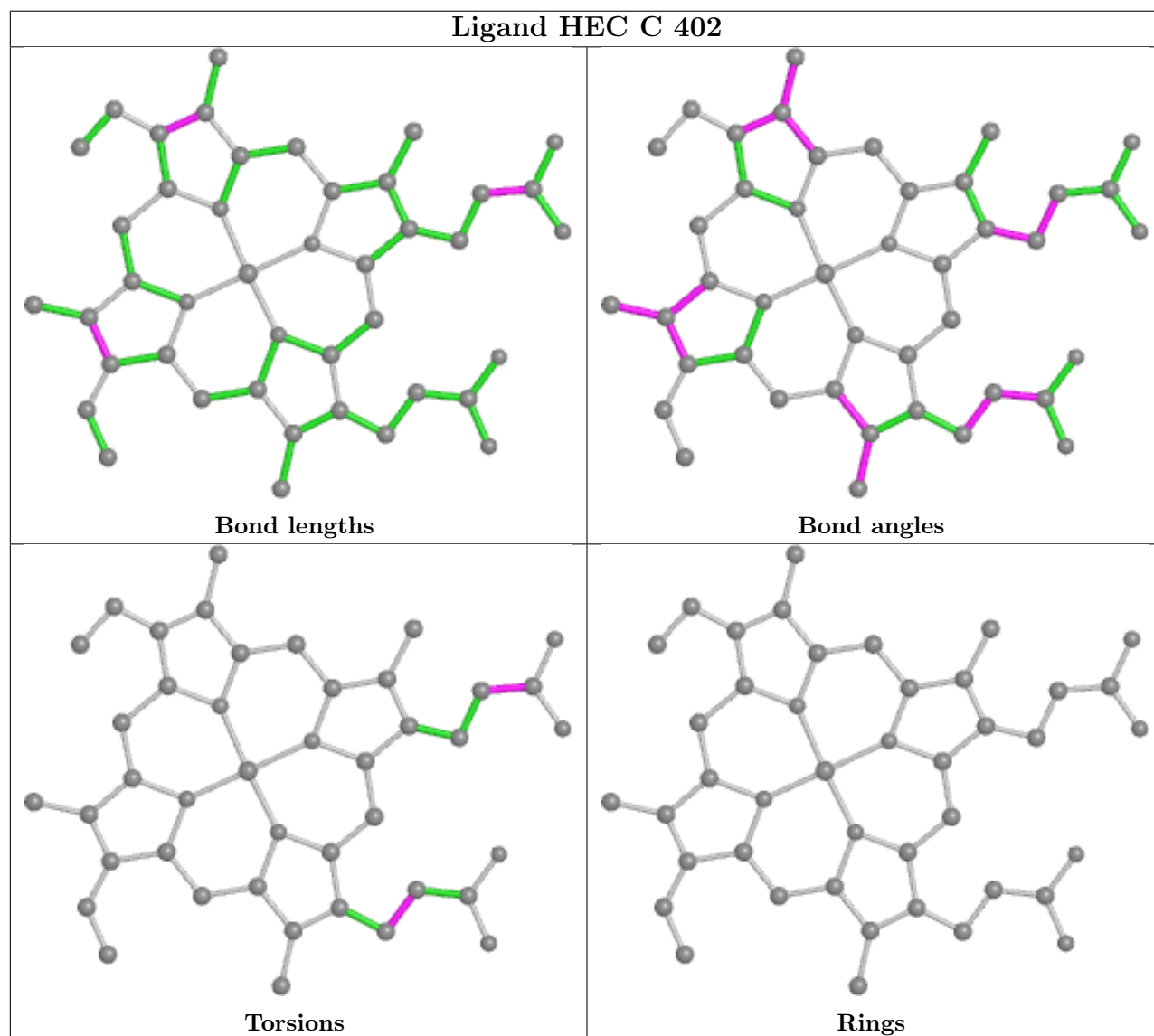
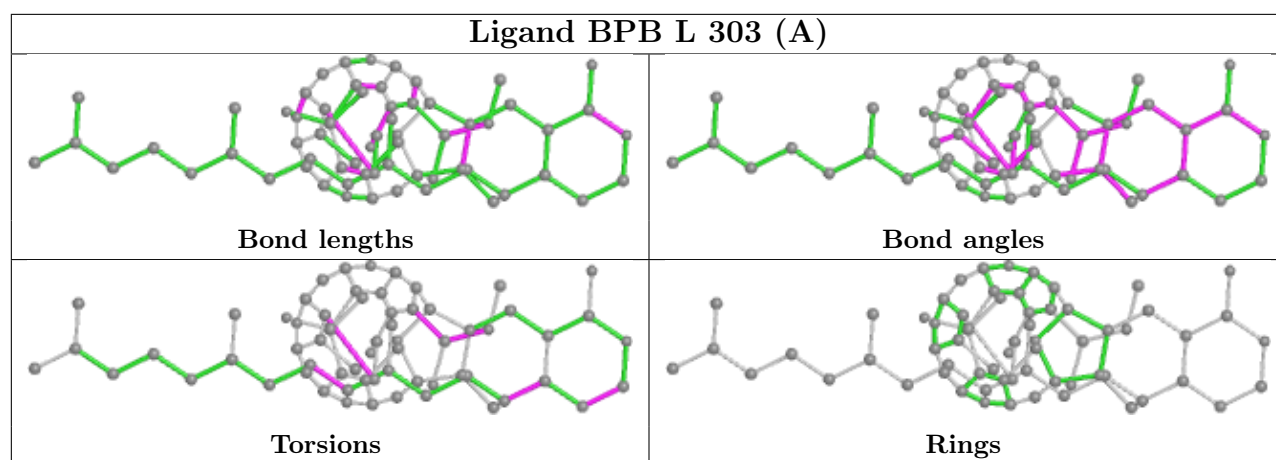
Mol	Chain	Res	Type	Clashes	Symm-Clashes
10	L	302[A]	BCB	1	0
10	M	403[B]	BCB	4	0
10	M	403[A]	BCB	1	0
8	L	305	LDA	1	0
10	L	304	BCB	4	0
11	L	303[B]	BPB	4	0
11	M	404	BPB	5	0
7	M	408	SO4	1	0
11	L	303[A]	BPB	4	0
8	H	701	LDA	1	0
5	C	402	HEC	4	0
10	L	301[B]	BCB	5	0
8	H	707	LDA	1	0
10	L	301[A]	BCB	2	0
13	M	402[A]	MQ7	2	0
5	C	404	HEC	2	0
5	C	403	HEC	2	0
10	L	302[B]	BCB	2	0
14	M	405	NS5	3	0

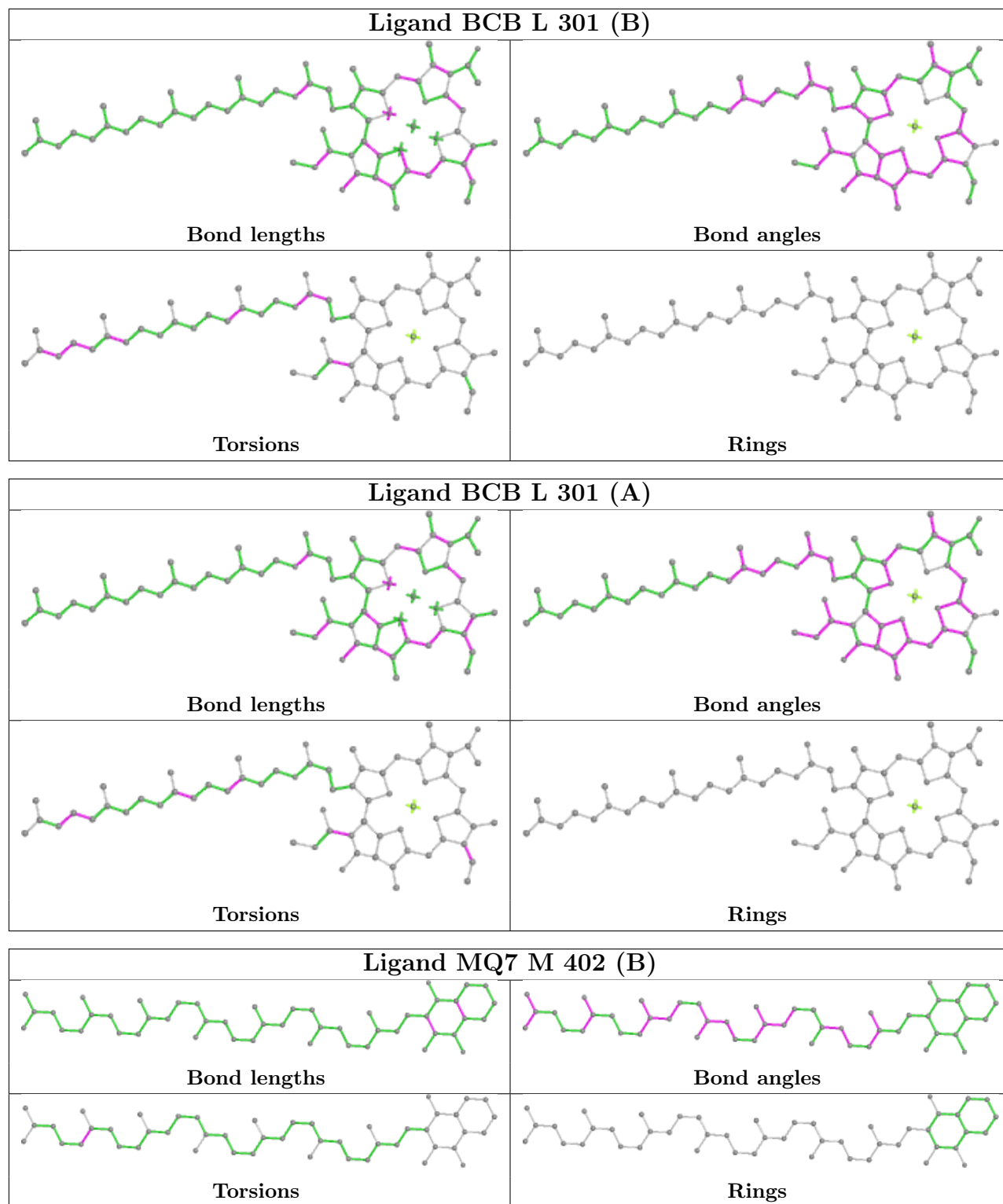
The following is a two-dimensional graphical depiction of Mogul quality analysis of bond lengths, bond angles, torsion angles, and ring geometry for all instances of the Ligand of Interest. In addition, ligands with molecular weight > 250 and outliers as shown on the validation Tables will also be included. For torsion angles, if less than 5% of the Mogul distribution of torsion angles is within 10 degrees of the torsion angle in question, then that torsion angle is considered an outlier. Any bond that is central to one or more torsion angles identified as an outlier by Mogul will be highlighted in the graph. For rings, the root-mean-square deviation (RMSD) between the ring in question and similar rings identified by Mogul is calculated over all ring torsion angles. If the average RMSD is greater than 60 degrees and the minimal RMSD between the ring in question and any Mogul-identified rings is also greater than 60 degrees, then that ring is considered an outlier. The outliers are highlighted in purple. The color gray indicates Mogul did not find sufficient equivalents in the CSD to analyse the geometry.

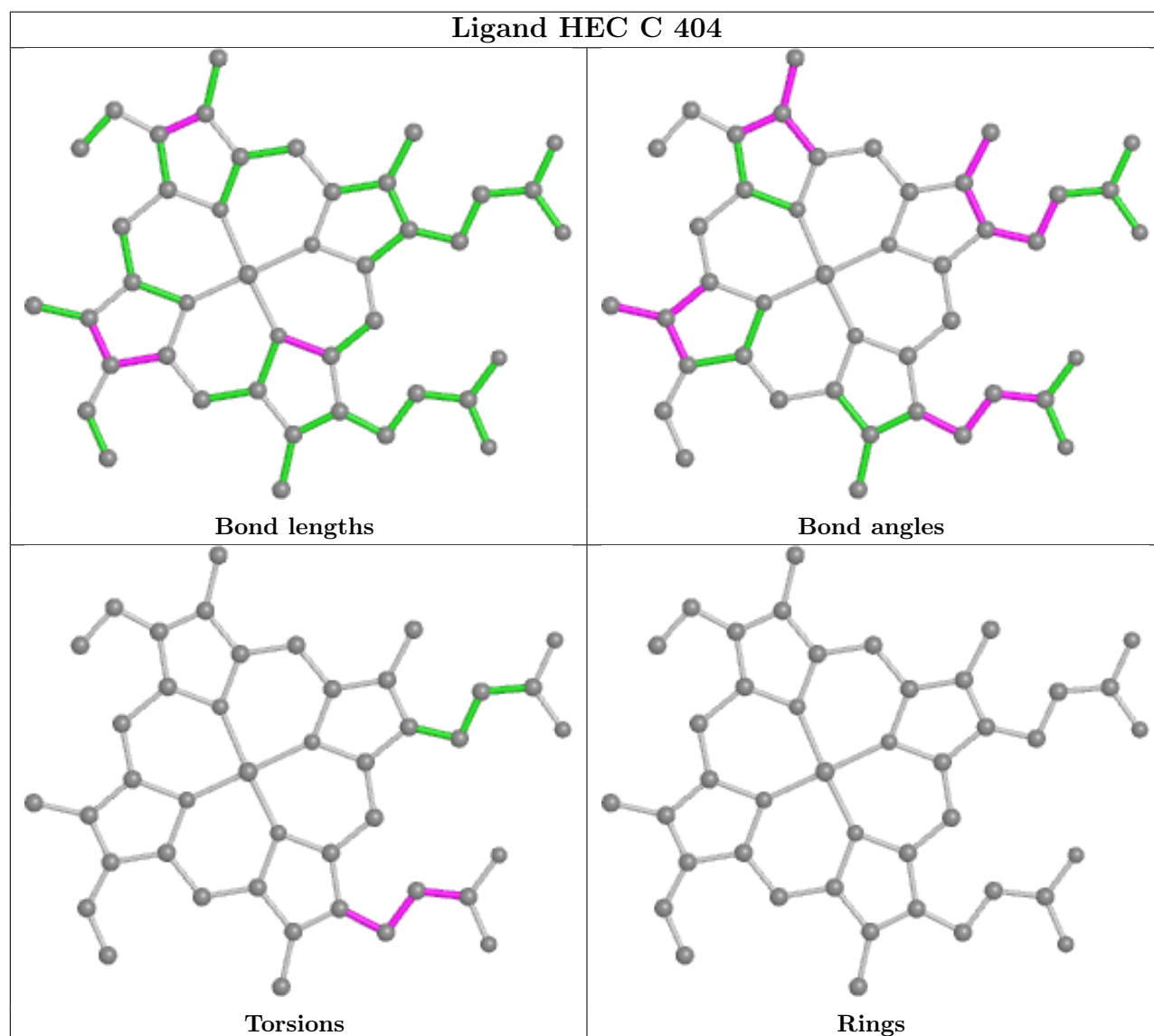
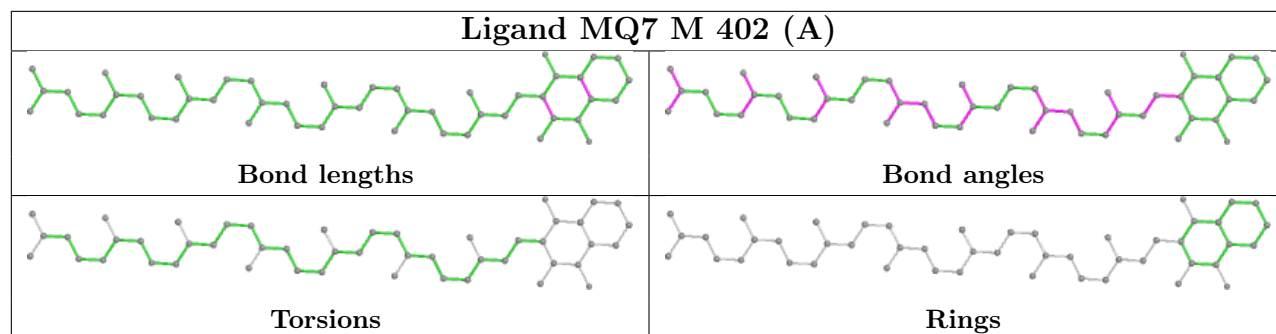


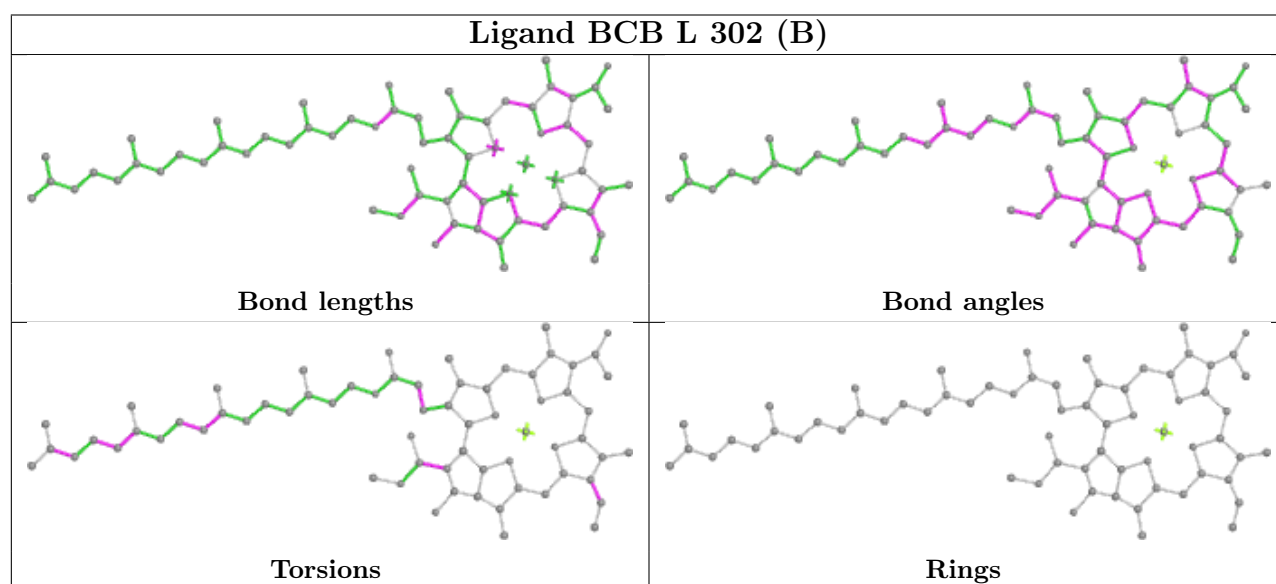
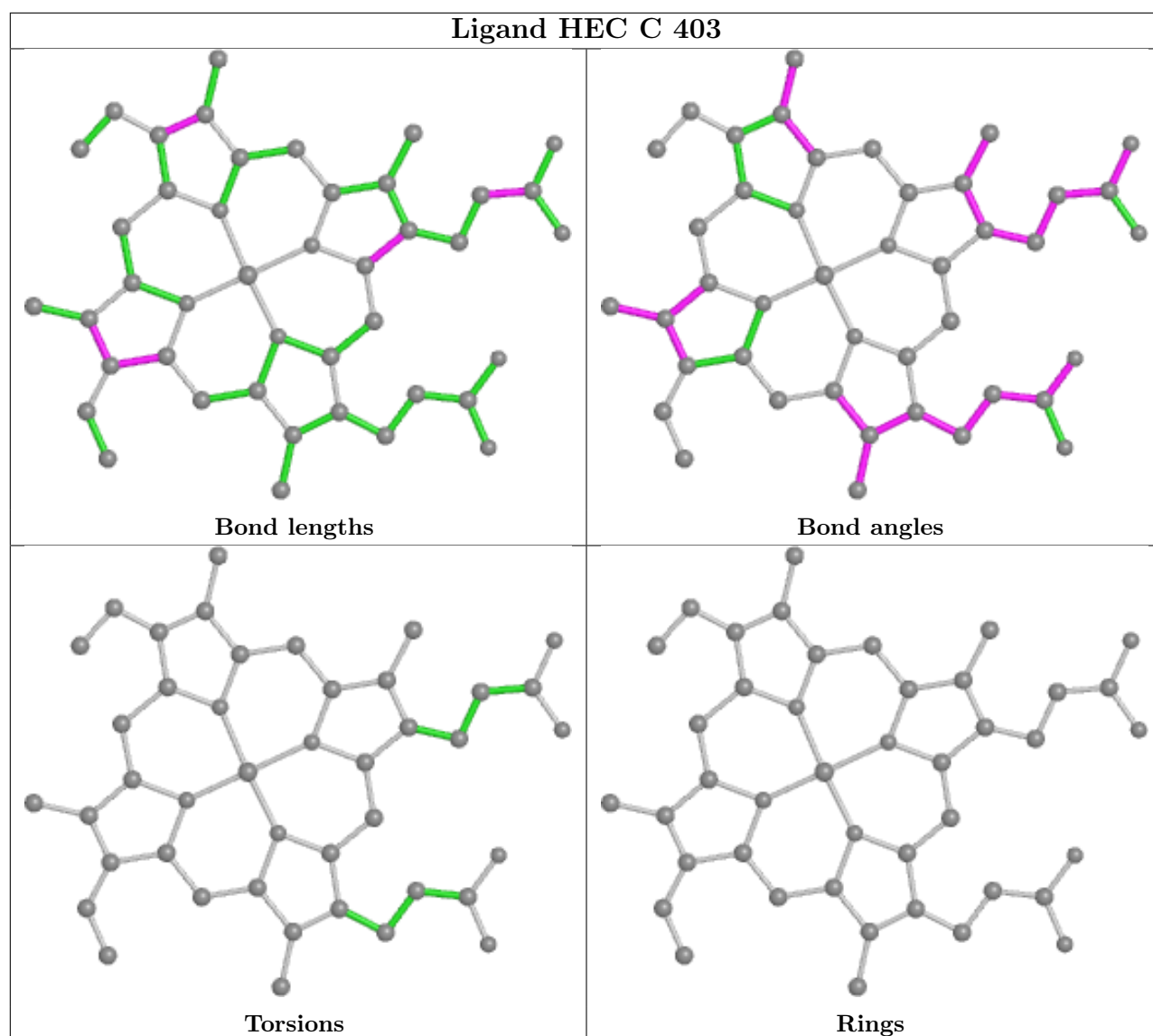


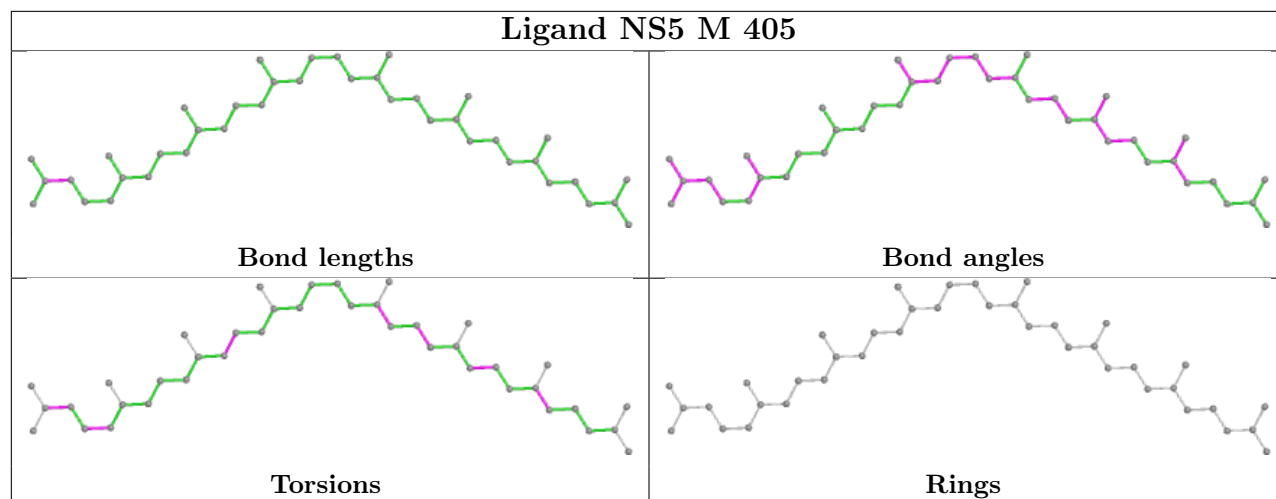












5.7 Other polymers [i](#)

There are no such residues in this entry.

5.8 Polymer linkage issues [i](#)

There are no chain breaks in this entry.

6 Fit of model and data [i](#)

6.1 Protein, DNA and RNA chains [i](#)

In the following table, the column labelled ‘#RSRZ> 2’ contains the number (and percentage) of RSRZ outliers, followed by percent RSRZ outliers for the chain as percentile scores relative to all X-ray entries and entries of similar resolution. The OWAB column contains the minimum, median, 95th percentile and maximum values of the occupancy-weighted average B-factor per residue. The column labelled ‘Q< 0.9’ lists the number of (and percentage) of residues with an average occupancy less than 0.9.

Mol	Chain	Analysed	<RSRZ>	#RSRZ>2	OWAB(Å ²)	Q<0.9
1	C	332/336 (98%)	-0.77	0 100 100	64, 83, 110, 135	0
2	H	257/258 (99%)	-0.59	3 (1%) 79 73	71, 93, 133, 185	0
3	L	273/273 (100%)	-0.81	0 100 100	66, 80, 105, 122	0
4	M	323/323 (100%)	-0.60	0 100 100	66, 80, 106, 134	0
All	All	1185/1190 (99%)	-0.69	3 (0%) 94 93	64, 84, 114, 185	0

All (3) RSRZ outliers are listed below:

Mol	Chain	Res	Type	RSRZ
2	H	46	PRO	2.7
2	H	258	LEU	2.2
2	H	257	LEU	2.1

6.2 Non-standard residues in protein, DNA, RNA chains [i](#)

In the following table, the Atoms column lists the number of modelled atoms in the group and the number defined in the chemical component dictionary. The B-factors column lists the minimum, median, 95th percentile and maximum values of B factors of atoms in the group. The column labelled ‘Q< 0.9’ lists the number of atoms with occupancy less than 0.9.

Mol	Type	Chain	Res	Atoms	RSCC	RSR	B-factors(Å ²)	Q<0.9
2	FME	H	1	10/11	0.97	0.13	81,93,103,118	0

6.3 Carbohydrates [i](#)

There are no monosaccharides in this entry.

6.4 Ligands

In the following table, the Atoms column lists the number of modelled atoms in the group and the number defined in the chemical component dictionary. The B-factors column lists the minimum, median, 95th percentile and maximum values of B factors of atoms in the group. The column labelled 'Q< 0.9' lists the number of atoms with occupancy less than 0.9.

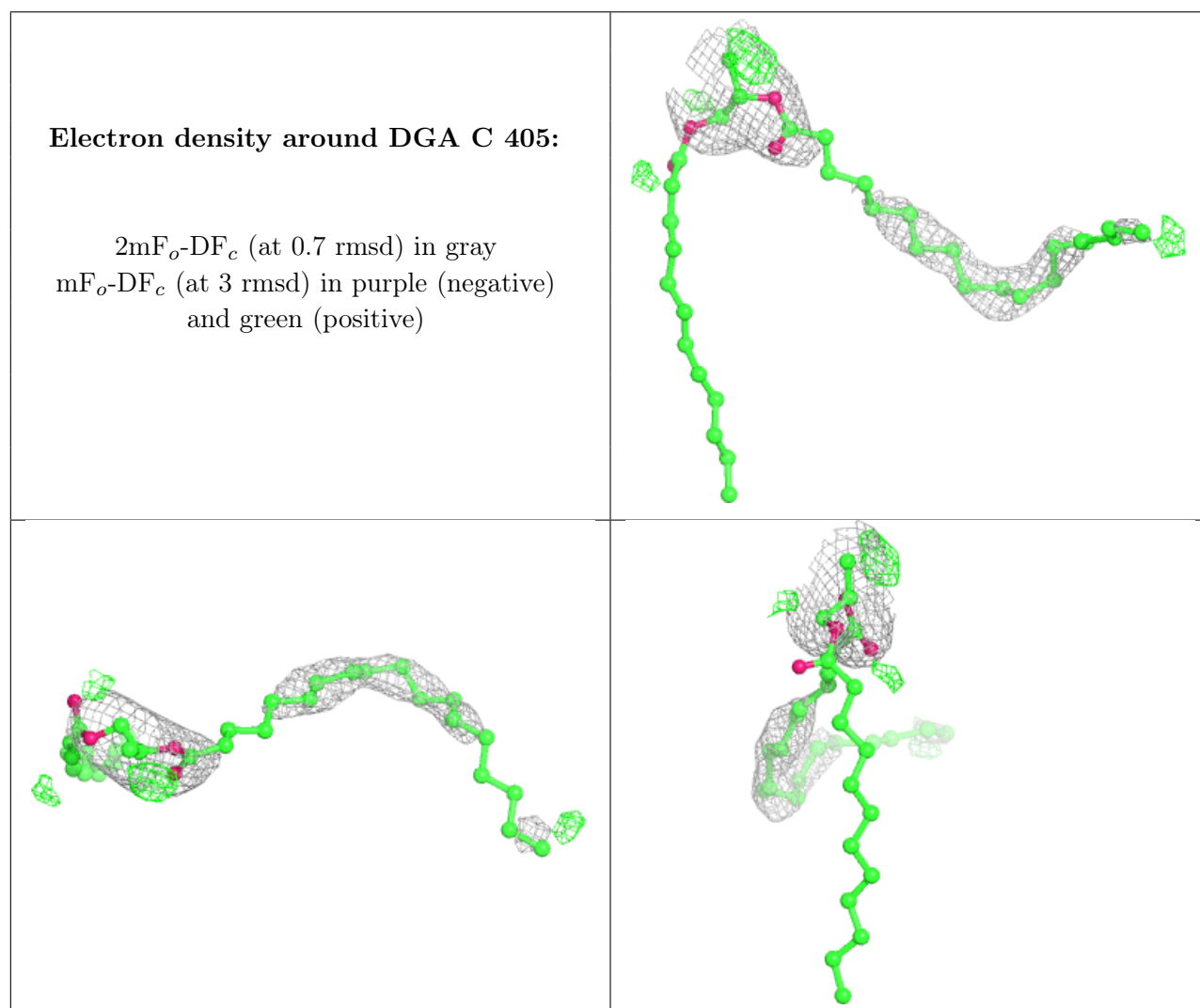
Mol	Type	Chain	Res	Atoms	RSCC	RSR	B-factors(Å ²)	Q<0.9
6	DGA	C	405	37/44	0.67	0.55	88,122,155,160	0
7	SO4	M	412	5/5	0.72	0.50	140,155,161,174	0
9	HTO	L	306	10/10	0.79	0.53	86,109,119,121	0
7	SO4	M	409	5/5	0.80	0.31	122,128,141,155	0
8	LDA	L	305	16/16	0.81	0.29	94,116,141,145	0
8	LDA	H	706	16/16	0.81	0.42	75,91,159,160	0
7	SO4	M	410	5/5	0.83	0.30	122,148,161,167	0
14	NS5	M	405	40/40	0.87	0.21	69,84,125,127	0
9	HTO	H	708	10/10	0.88	0.23	95,107,121,123	0
7	SO4	M	411	5/5	0.89	0.44	119,121,146,173	0
7	SO4	H	704	5/5	0.90	0.48	89,93,107,107	5
7	SO4	C	406	5/5	0.91	0.27	121,135,142,155	0
13	MQ7	M	402[B]	48/48	0.93	0.21	67,75,112,135	48
13	MQ7	M	402[A]	48/48	0.93	0.21	67,75,113,135	48
10	BCB	L	304	66/66	0.95	0.21	65,74,156,167	0
7	SO4	H	705	5/5	0.95	0.06	97,98,110,110	5
7	SO4	H	703	5/5	0.95	0.45	143,146,151,163	0
8	LDA	H	707	16/16	0.95	0.35	89,107,124,127	0
7	SO4	M	407	5/5	0.96	0.07	106,107,116,138	0
8	LDA	H	701	16/16	0.96	0.18	72,86,101,101	0
11	BPB	M	404	65/65	0.96	0.17	69,82,163,171	0
5	HEC	C	403	43/43	0.97	0.17	63,73,83,87	0
10	BCB	L	302[B]	66/66	0.98	0.21	62,70,102,105	66
7	SO4	M	406	5/5	0.98	0.06	90,104,114,115	0
10	BCB	M	403[A]	66/66	0.98	0.18	52,66,97,103	66
10	BCB	M	403[B]	66/66	0.98	0.18	52,66,97,103	66
11	BPB	L	303[A]	65/65	0.98	0.21	67,73,82,87	65
11	BPB	L	303[B]	65/65	0.98	0.21	67,73,82,87	65
5	HEC	C	401	43/43	0.98	0.14	80,88,103,117	0
10	BCB	L	301[A]	66/66	0.98	0.20	56,66,82,99	66
10	BCB	L	301[B]	66/66	0.98	0.20	56,66,82,99	66
10	BCB	L	302[A]	66/66	0.98	0.21	62,70,102,105	66
7	SO4	M	408	5/5	0.99	0.08	78,86,92,93	0
12	FE	M	401[A]	1/1	0.99	0.09	78,78,78,78	1
12	FE	M	401[B]	1/1	0.99	0.09	78,78,78,78	1
7	SO4	H	702	5/5	0.99	0.06	94,104,112,115	0
5	HEC	C	402	43/43	0.99	0.13	71,82,93,119	0

Continued on next page...

Continued from previous page...

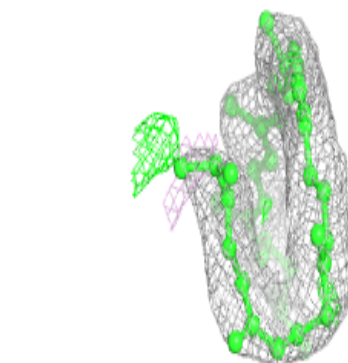
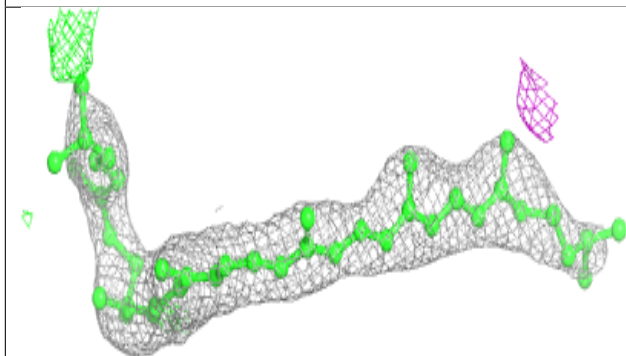
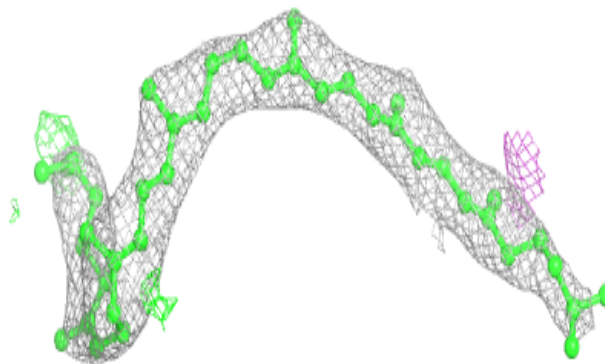
Mol	Type	Chain	Res	Atoms	RSCC	RSR	B-factors(\AA^2)	Q<0.9
5	HEC	C	404	43/43	0.99	0.12	65,74,91,113	0

The following is a graphical depiction of the model fit to experimental electron density of all instances of the Ligand of Interest. In addition, ligands with molecular weight > 250 and outliers as shown on the geometry validation Tables will also be included. Each fit is shown from different orientation to approximate a three-dimensional view.

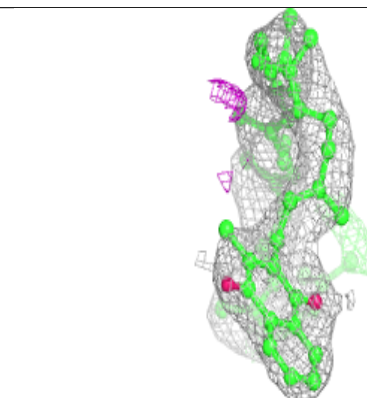
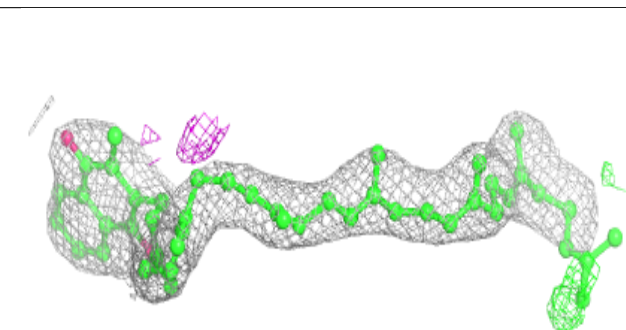
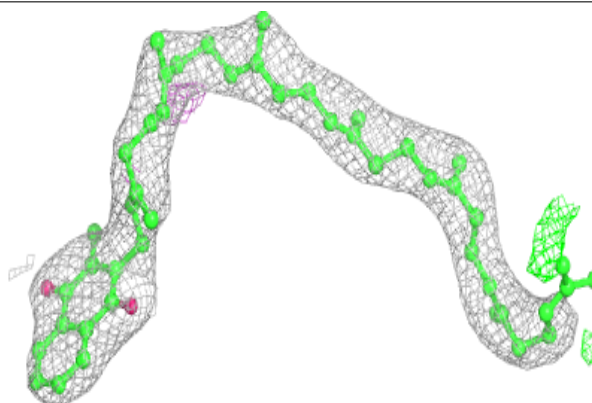


Electron density around NS5 M 405:

$2mF_o-DF_c$ (at 0.7 rmsd) in gray
 mF_o-DF_c (at 3 rmsd) in purple (negative)
and green (positive)

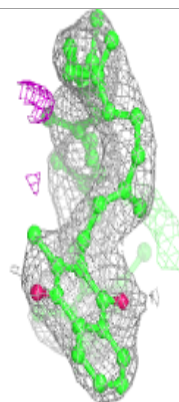
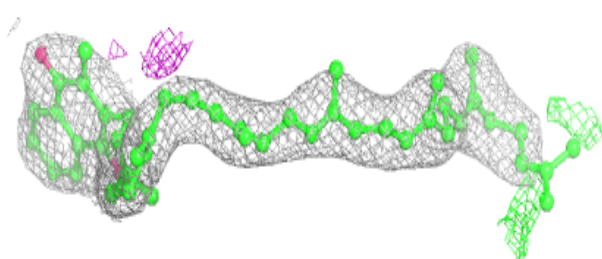
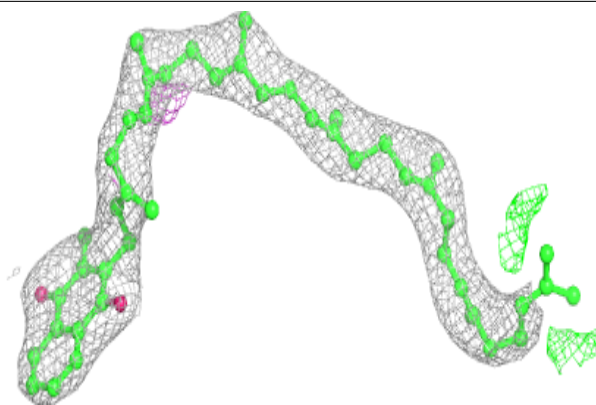
**Electron density around MQ7 M 402 (B):**

$2mF_o-DF_c$ (at 0.7 rmsd) in gray
 mF_o-DF_c (at 3 rmsd) in purple (negative)
and green (positive)

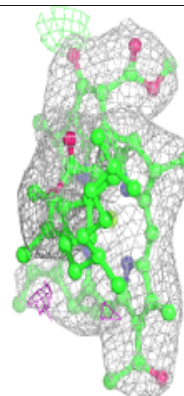
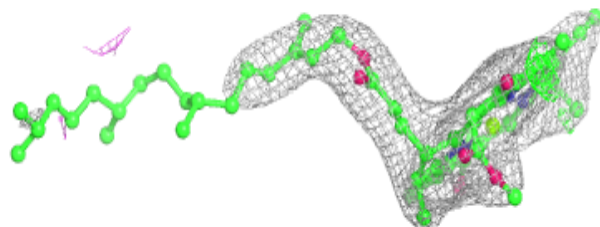
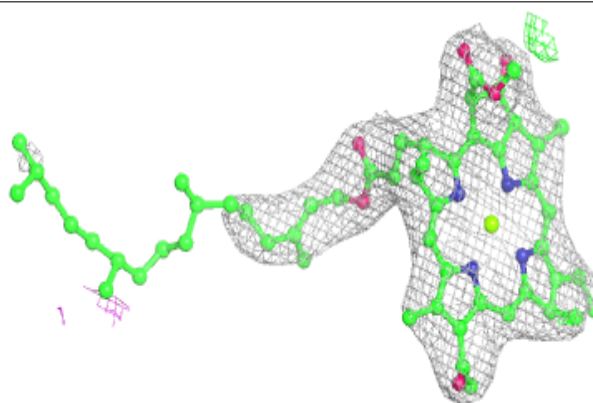


Electron density around MQ7 M 402 (A):

$2mF_o-DF_c$ (at 0.7 rmsd) in gray
 mF_o-DF_c (at 3 rmsd) in purple (negative)
and green (positive)

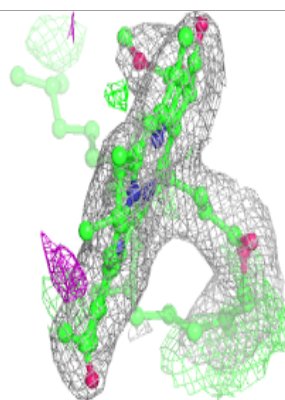
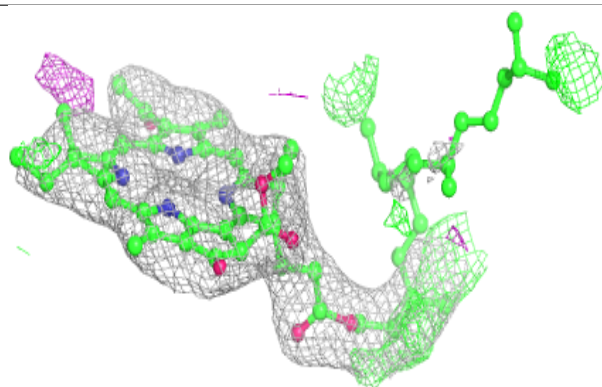
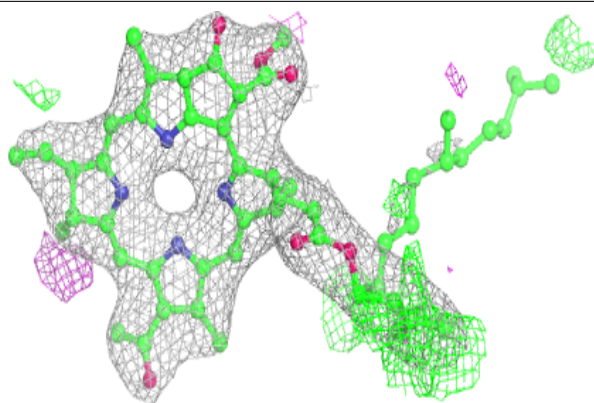
**Electron density around BCB L 304:**

$2mF_o-DF_c$ (at 0.7 rmsd) in gray
 mF_o-DF_c (at 3 rmsd) in purple (negative)
and green (positive)

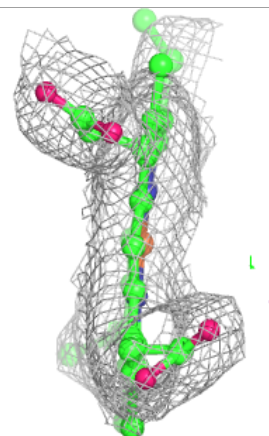
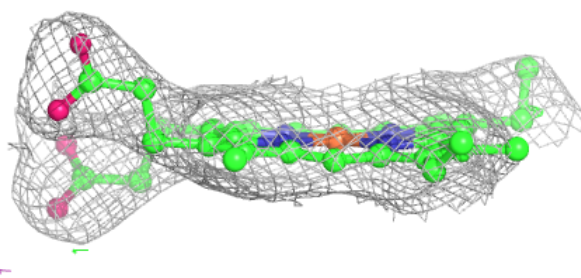
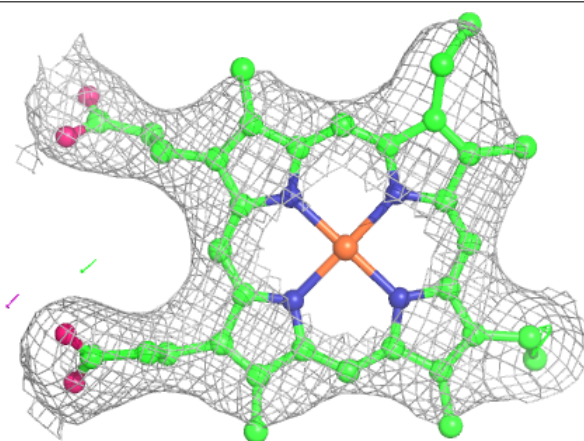


Electron density around BPB M 404:

$2mF_o-DF_c$ (at 0.7 rmsd) in gray
 mF_o-DF_c (at 3 rmsd) in purple (negative)
and green (positive)

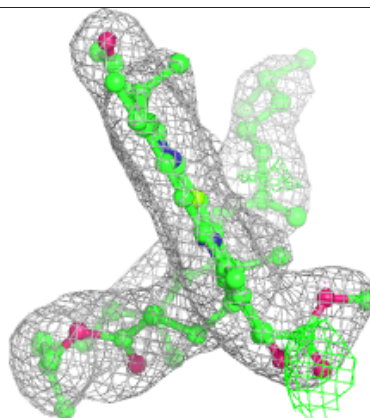
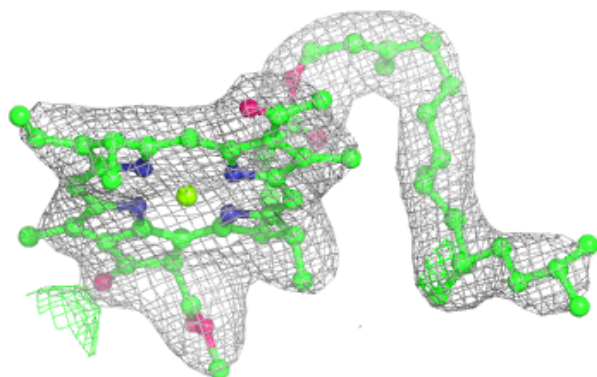
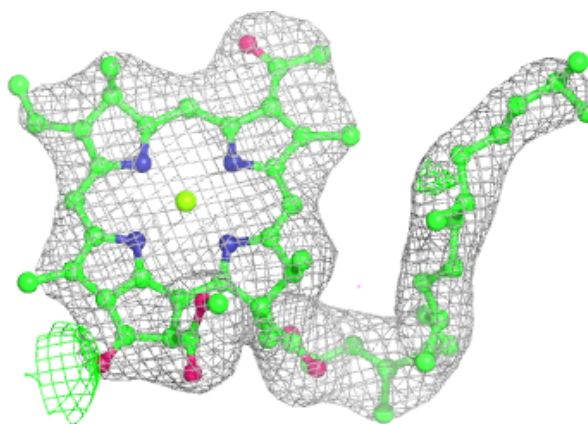
**Electron density around HEC C 403:**

$2mF_o-DF_c$ (at 0.7 rmsd) in gray
 mF_o-DF_c (at 3 rmsd) in purple (negative)
and green (positive)

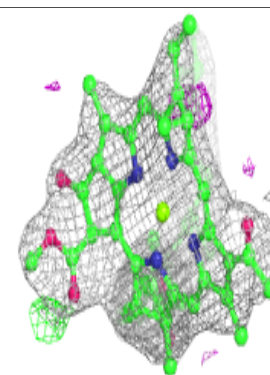
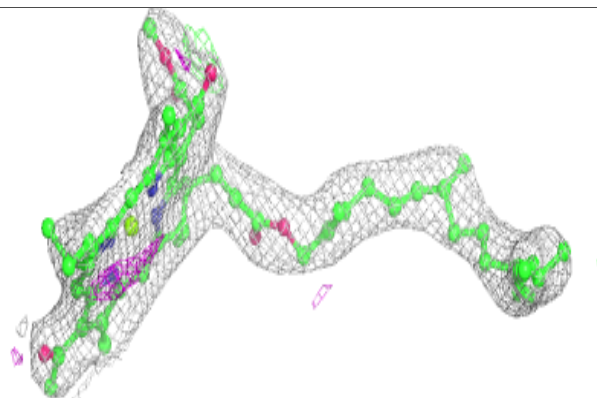
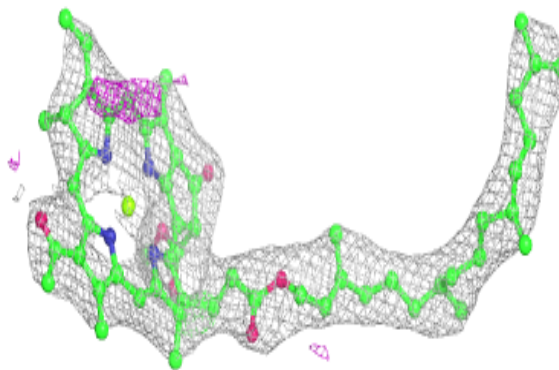


Electron density around BCB L 302 (B):

$2mF_o-DF_c$ (at 0.7 rmsd) in gray
 mF_o-DF_c (at 3 rmsd) in purple (negative)
and green (positive)

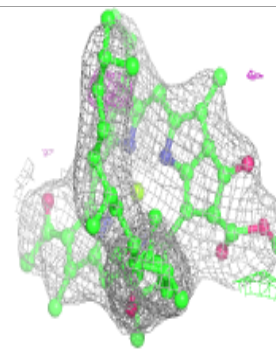
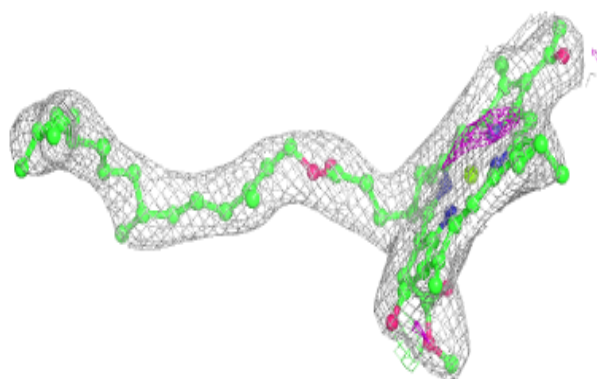
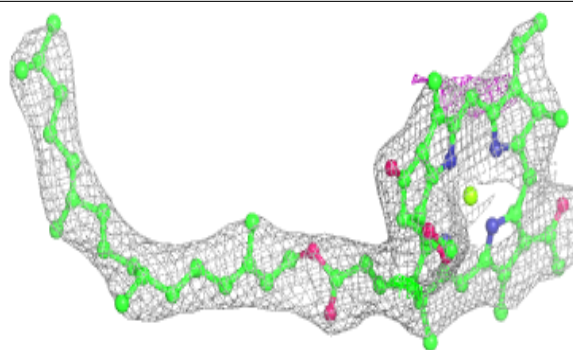
**Electron density around BCB M 403 (A):**

$2mF_o-DF_c$ (at 0.7 rmsd) in gray
 mF_o-DF_c (at 3 rmsd) in purple (negative)
and green (positive)

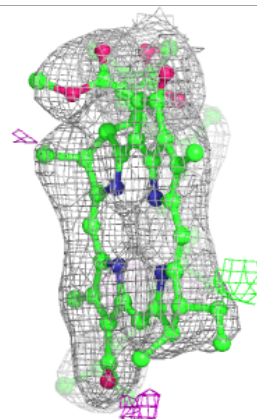
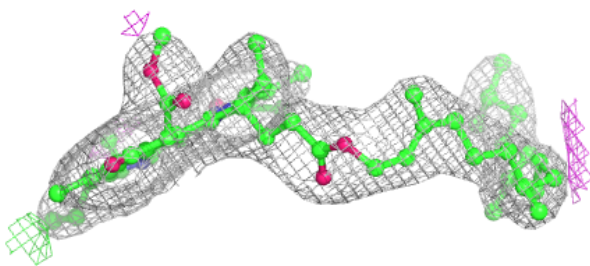
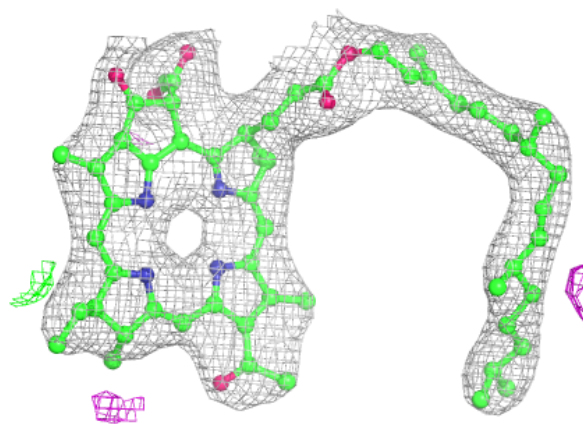


Electron density around BCB M 403 (B):

$2mF_o-DF_c$ (at 0.7 rmsd) in gray
 mF_o-DF_c (at 3 rmsd) in purple (negative)
and green (positive)

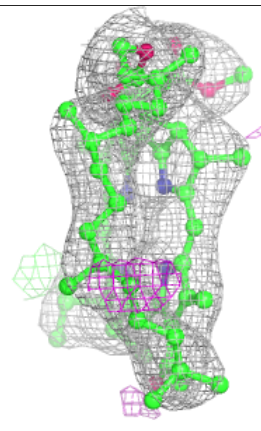
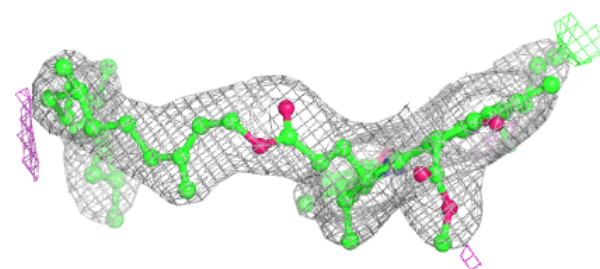
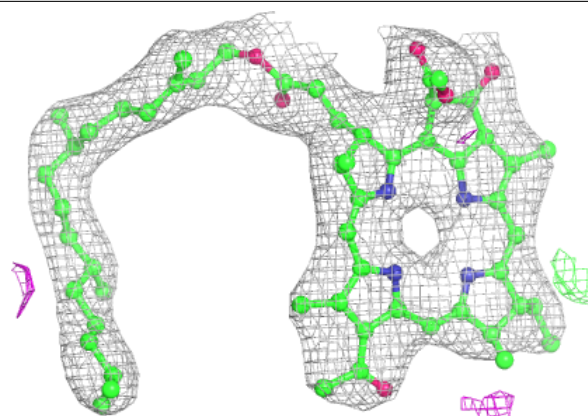
**Electron density around BPB L 303 (A):**

$2mF_o-DF_c$ (at 0.7 rmsd) in gray
 mF_o-DF_c (at 3 rmsd) in purple (negative)
and green (positive)



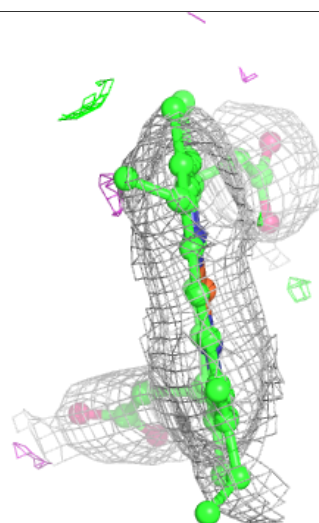
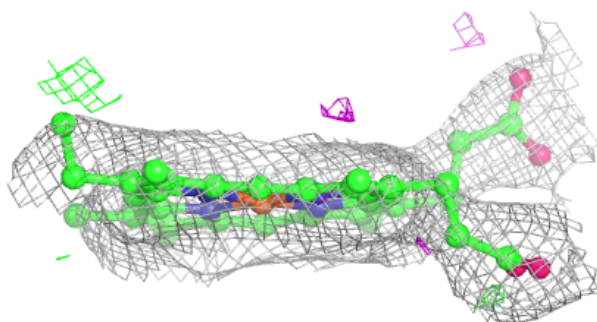
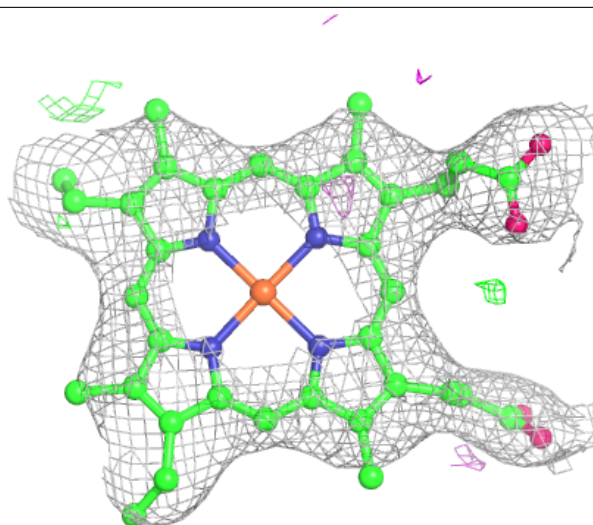
Electron density around BPB L 303 (B):

$2mF_o-DF_c$ (at 0.7 rmsd) in gray
 mF_o-DF_c (at 3 rmsd) in purple (negative)
and green (positive)



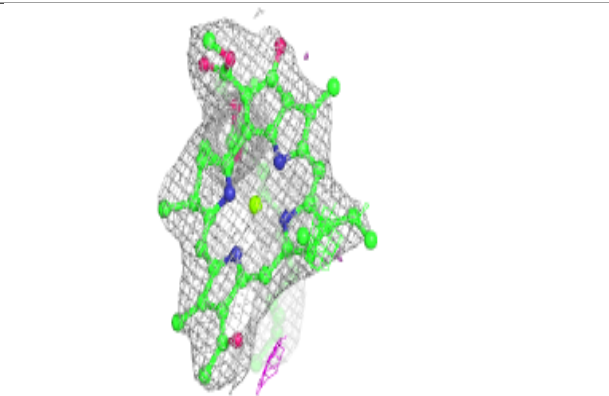
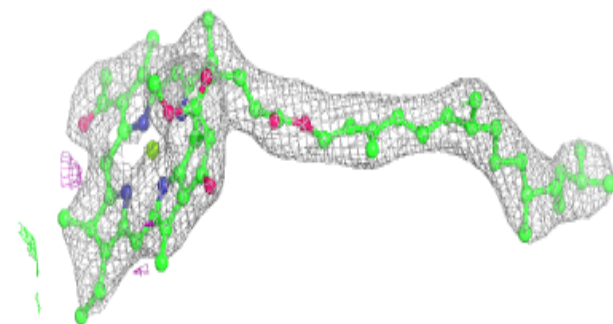
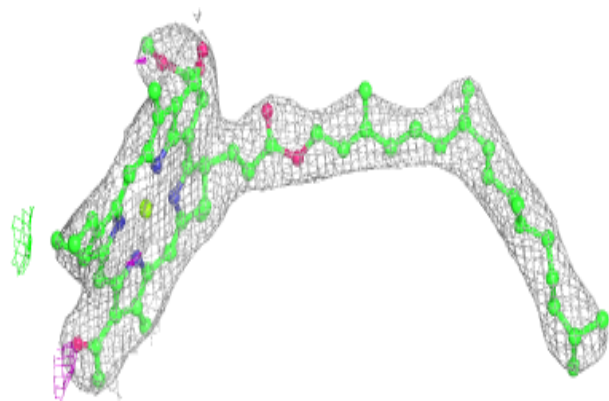
Electron density around HEC C 401:

$2mF_o-DF_c$ (at 0.7 rmsd) in gray
 mF_o-DF_c (at 3 rmsd) in purple (negative)
and green (positive)

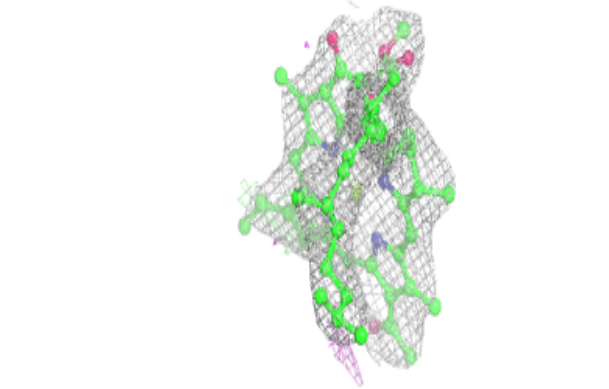
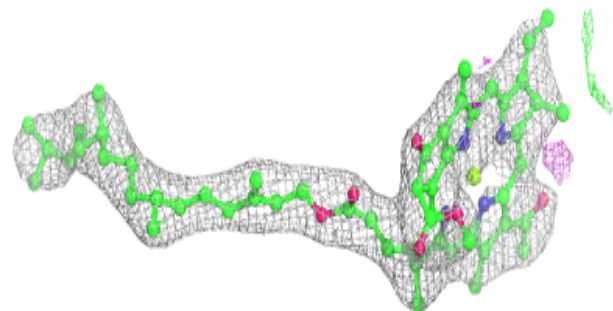
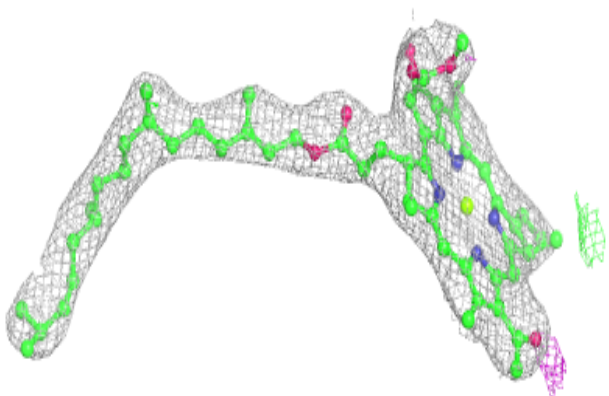


Electron density around BCB L 301 (A):

$2mF_o-DF_c$ (at 0.7 rmsd) in gray
 mF_o-DF_c (at 3 rmsd) in purple (negative)
and green (positive)

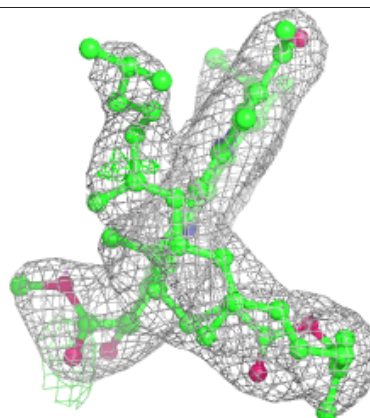
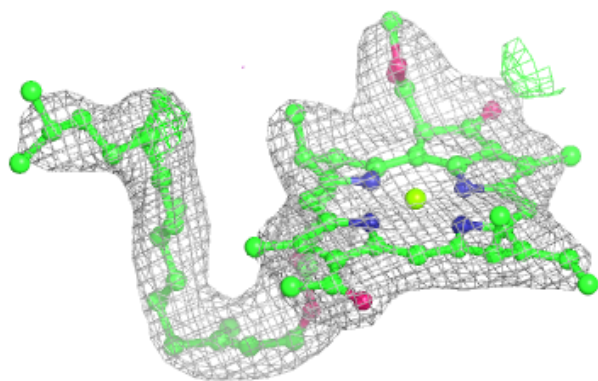
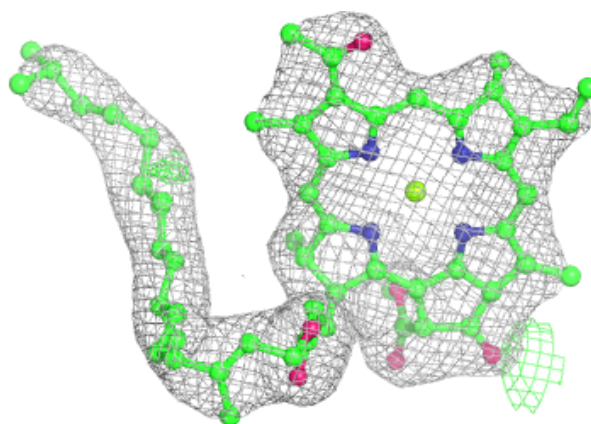
**Electron density around BCB L 301 (B):**

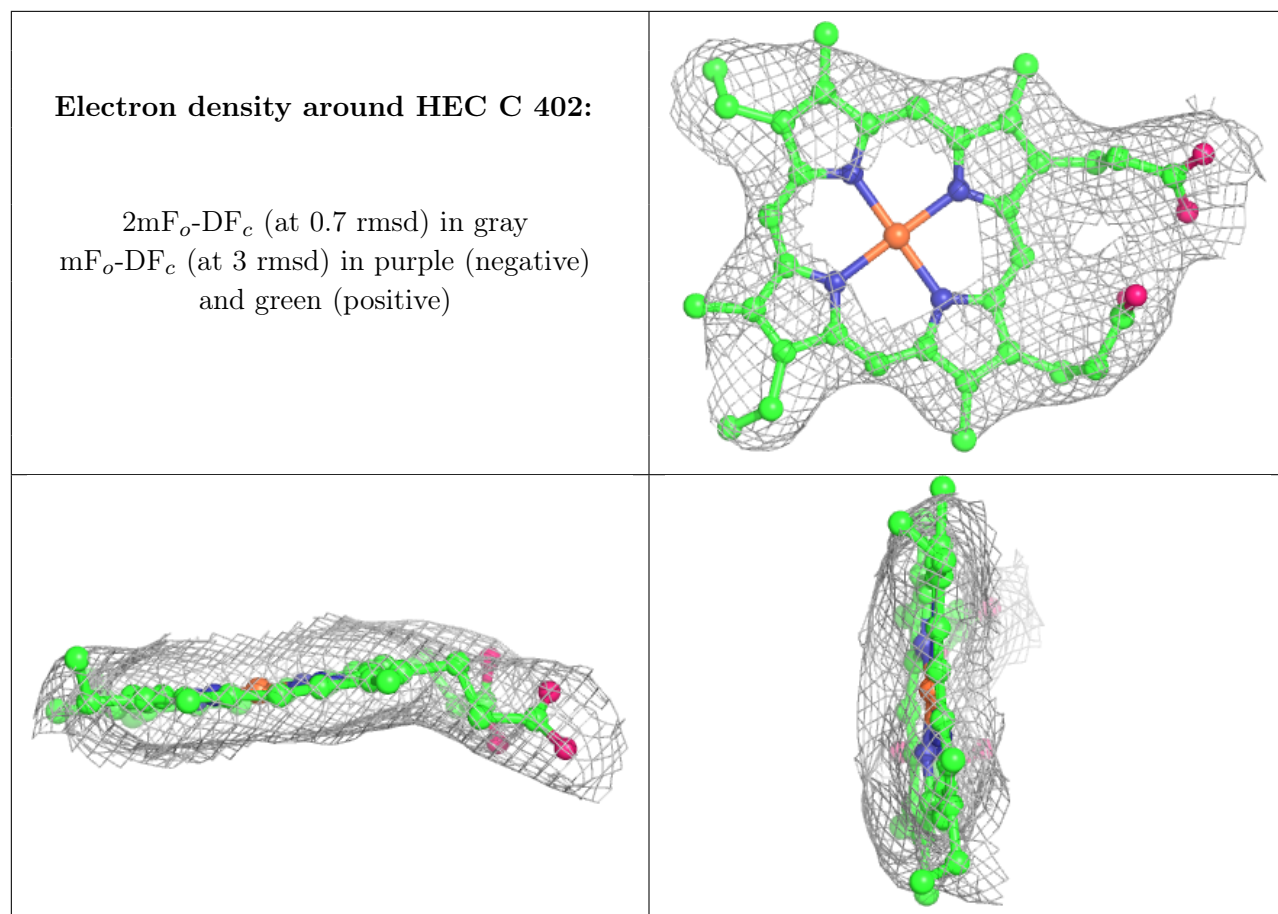
$2mF_o-DF_c$ (at 0.7 rmsd) in gray
 mF_o-DF_c (at 3 rmsd) in purple (negative)
and green (positive)

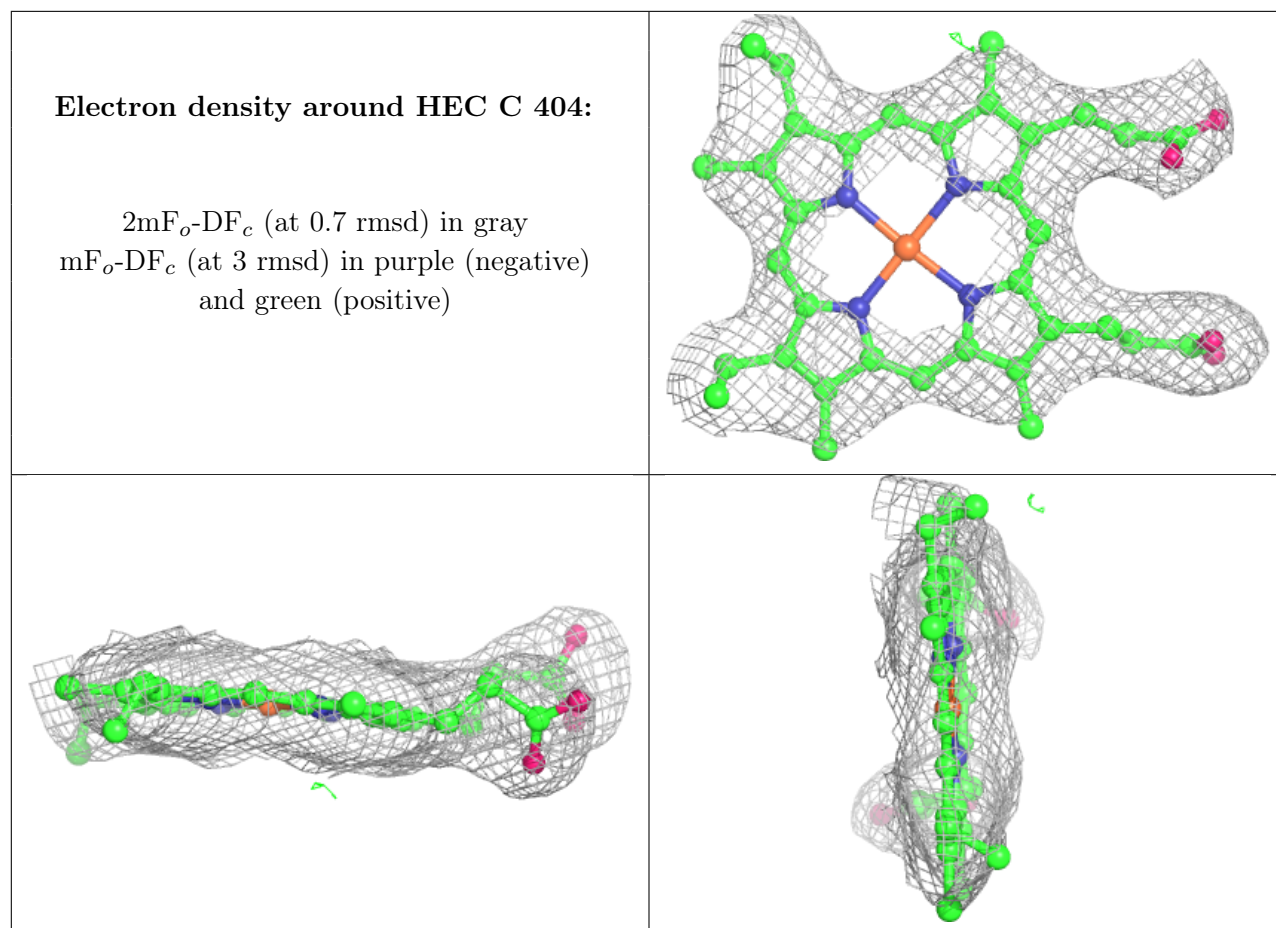


Electron density around BCB L 302 (A):

$2mF_o-DF_c$ (at 0.7 rmsd) in gray
 mF_o-DF_c (at 3 rmsd) in purple (negative)
and green (positive)







6.5 Other polymers [i](#)

There are no such residues in this entry.